

S1

K4-unmodified

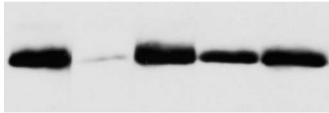
K4-ac

K10-ac

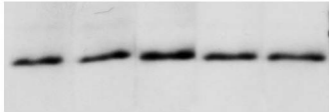
K4-ac, S6-ph

none

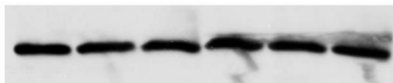
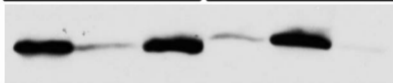
competitor



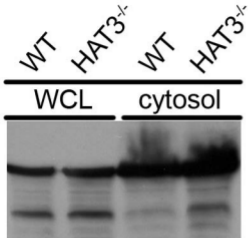
α -H4ac



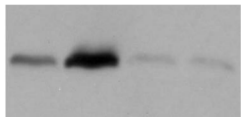
α -H4

S2*wild type**HAT3^{-/-}**HAT3^{+/-}**wild type**HAT3^{-/-}**HAT3^{+/-}* α -H4K4ac α -H4K4unmod

S3



α -enolase



α -H4K4unmodified

LEGENDS

Figure S1: HAT3 acetylates H4K4 in PF. Western blot analysis of the H4K4 acetylation state in PF cell lysates.

Figure S2: Characterization of anti-H4ac. Western blot of whole trypanosome extracts (2×10^6 cells/lane). Peptide competitors used are shown above each lane. To confirm equal loading, blots were stripped and reprobed with anti-H4 in the absence of peptide competitors.

Figure S3: Western blot analysis of the H4K4 acetylation state of cytoplasmic histones. Whole cell lysates (WCL) and cytoplasmic fractions (cytosol) from 5×10^6 and 2.75×10^7 cells respectively, were analyzed with antibodies to unmodified H4HK4 and enolase.