

Title:

A prognostic model based on residual cancer burden and tumor-infiltrating lymphocytes on residual disease after neoadjuvant therapy in HER2+ breast cancer

Federica Miglietta^{1,2}, Moira Ragazzi^{3,4}, Bethania Fernandes⁵, Gaia Griguolo^{1,2}, Davide Massa^{1,2}, Fabio Girardi², Michele Bottoso^{1,2}, Alessandra Bisagni³, Giovanni Zarrilli⁶, Francesca Porra^{1,2}, Daniela Iannaccone^{1,2}, Leocadia Dore^{5,7}, Mariangela Gaudio^{5,7}, Giacomo Santandrea^{3,8}; Matteo Fassan^{2,6}, Marcello Lo Mele⁶, Rita De Sanctis^{5,7}, Alberto Zambelli^{5,7}, Giancarlo Bisagni⁹, Valentina Guarneri^{1,2} and Maria Vittoria Dieci^{1,2}

1 Department of Surgery, Oncology and Gastroenterology, University of Padova, Padova, Italy

2 Istituto Oncologico Veneto – IOV IRCCS, Padova, Italy

3 Pathology Unit, Arcispedale Santa Maria Nuova, Azienda USL-IRCCS di Reggio Emilia, Reggio Emilia, Italy.

4 Department of Medical and Surgical Sciences for Children and Adults, University of Modena and Reggio Emilia, Modena, Italy

5 Humanitas Clinical and Research Center – IRCCS, Rozzano (MI) – Italy

6 Department of Medicine (DIMED), Surgical Pathology & Cytopathology Unit, University of Padova, Padova, Italy

7 Department of Biomedical Sciences, Humanitas University, Milano, Italy

8 Clinical and Experimental Medicine PhD Program, University of Modena and Reggio Emilia, Modena, Italy.

9 Oncology Unit, Arcispedale Santa Maria Nuova, Azienda USL-IRCCS di Reggio Emilia, Reggio Emilia, Italy.

Running title:

RCB+TIL: a composite prognostic model in HER2+ BC

Corresponding author:

Prof. Valentina Guarneri

Department of Surgery, Oncology and Gastroenterology

University of Padova

Division of Medical Oncology 2

Istituto Oncologico Veneto – IRCCS

Via Gattamelata 64, 35128, Padova, Italy

Tel: +390498215931

Fax: +390498215932

Email: valentina.guarneri@unipd.it

[ORCID: 0000-0002-3967-9861](https://orcid.org/0000-0002-3967-9861)

Competing interests: *FM* reports personal fees from Roche, Novartis and Gilead outside the submitted work. *GG* reports personal fees from Novartis, Eli Lilly, and Gilead outside the submitted work. *DM* reports travel support from Eli Lilly outside the submitted work. *MF* has been involved in consulting/advisory roles in Astellas Pharma, Tesaro, MSD, Pierre Fabre, Astra Zeneca, Incyte, GlaxoSmithKline, Diaceutics, and Roche, received research funding from Astellas Pharma, QED Therapeutics, and Macrophage Pharma and is supported by grants from the Italian Health Ministry/Veneto region research program NET-2016–02363853 and AIRC 5 per mille 2019 (ID 22759 program). *RDS* honoraria for advisory board consultancy from Lilly, Novartis, Istituto Clinico Gentili, Amgen, Eisai, and Ipsen (all outside the present work). *AZ* reports personal fees and non-financial support from Novartis, AstraZeneca, Lilly, Pfizer, Daiichi Sankyo, MDS (Merck Sharp&Dome), Roche, Seagen, Exact Sciences, Gilaed, Istituto Gentili, all disclosures are outside the submitted work. *VG* reports personal fees for advisory board membership from Eisai, Eli Lilly, Exact Sciences, Gilead, Merck Serono, MSD, Novartis, Olema Oncology and Sanofi; personal fees as an invited speaker from Amgen, Eli Lilly, GSK, Astra Zeneca, Novartis all outside the submitted work. *MVD* reports personal fees from Eli Lilly, MSD, Exact Sciences, Novartis, Pfizer, Seagen, outside the submitted work.

Word count:

Statement of translational relevance: 136 words; Abstract: 249 words; Manuscript: 3844 words.

Number of Figures: 4

Number of Tables: 2

References: 47

Author contributions:

FM: conceptualization, data curation, formal analysis, visualization, methodology, writing – original draft; MR: investigation, writing-review and editing; BF: investigation, writing-review and editing; GG: methodology, investigation, writing-review and editing; DM: methodology, investigation, writing – original draft; FG: methodology, writing-review and editing; MB: writing-review and editing; AB: investigation, writing-review and editing; GZ: writing-review and editing; FP: investigation, writing-review and editing; DI: investigation, writing-review and editing; LD: investigation, writing-review and editing; MG: investigation, writing-review and editing; GSA: investigation, writing-review and editing; MF: writing-review and editing; MLM: writing-review and editing; RDS: writing-review and editing; AZ: investigation, writing-review and editing; GB: investigation, writing-review and editing; VG: supervision, funding acquisition, writing-review and editing; MVD: conceptualization, formal analysis, supervision, funding acquisition, writing-review and editing.

Abstract

Purpose: We aim to evaluate the prognostic significance of tumor-infiltrating lymphocyte on residual disease (RD-TIL) in HER2+ breast cancer (BC) patients who failed to achieve pathologic-complete response (pCR) after anti-HER2+chemotherapy (CT)-based neoadjuvant treatment (NAT). We assessed the feasibility of combining the prognostic information provided by residual cancer burden (RCB) and RD-TILs into a composite score (RCB+TILs).

Experimental Design: HER2+ BC patients treated with CT+anti-HER2-based NAT at three institutions were retrospectively included. RCB and TILs levels were evaluated on hematoxylin and eosin-stained slides from surgical samples according to available recommendations. Overall survival (OS) was used as an outcome measure.

Results: 295 patients were included, of whom 195 had RD. RCB was significantly associated with OS. Higher RD-TILs were significantly associated with poorer OS as compared to lower RD-TILs (15% cutoff). In multivariate analysis, both RCB and RD-TIL maintained their independent prognostic value. A combined score, RCB+TIL, was calculated from the estimated coefficient of RD-TILs and the RCB index in a bivariate logistic model for OS. The RCB+TIL score was significantly associated with OS. The C-index for OS of the RCB+TIL score was numerically higher than that of RCB and significantly higher than that of RD-TILs.

Conclusions: We have reported an independent prognostic impact of RD-TILs after anti-HER2+CT NAT, which might underlie an imbalance of the RD microenvironment towards immunosuppressive features. We provided a new composite prognostic score based on RCB+TIL, which was significantly associated with OS and proved to be more informative than the isolated evaluation of RCB and RD-TILs.

Keywords: Breast cancer; HER2+; Residual disease; Residual cancer burden; TILs.

Translational Relevance

Neoadjuvant treatment (NAT) is increasingly being administered to HER2-positive breast cancer, as it offers undeniable clinical benefits from a patient perspective. Subsequent adjuvant drugs are tailored based on the presence or absence of residual disease (RD) cells after NAT. In this retrospective study, residual cancer burden (RCB) and tumor infiltrating lymphocytes (RD-TIL) were evaluated on residual disease in HER2-positive breast cancer patients treated with NAT. Both higher RD-TILs and RCB were independently associated with worse overall survival (OS) and their prognostic information were integrated into a composite prognostic score for OS, RCB+TIL, which provided additional prognostic information beyond the isolated evaluation of the two parameters. If validated in larger prospective cohorts, the RCB+TIL prognostic model could help refine the assessment of RD to more reliably predict the outcome of this heterogeneous population of HER2+ BC patients.

Introduction

Neoadjuvant treatment (NAT) is increasingly administered in HER2+ breast cancer (BC) patients, as it combines the opportunity of expanding locoregional treatment options, assessing the in vivo-sensitivity to systemic treatments, prognostically stratifying patients based on pathologic response, and, notably, opening the possibility of personalizing the post-neoadjuvant systemic approach (1). More specifically, pathologic complete response (pCR) is one of the strongest positive prognostic factors in HER2+ BC (2–4), and the presence of residual disease (RD) at surgery currently represents the main criterion for selecting high-risk patients for escalated strategies in the post-neoadjuvant setting (5). Nevertheless, this dichotomic stratification is still suboptimal for estimating, at the patient level, the risk of relapse, as some patients with RD will remain disease-free, and conversely, a fraction of patients achieving pCR will still experience a recurrence event (2–4). Therefore, identification of additional biomarkers to increase prognostication is critical.

Residual cancer burden (RCB), which combines the extent of residual cancer at surgery with more comprehensive histopathological data (6), offers a standardized and reproducible evaluation of RD (7), which can provide more granular prognostic information for all BC subtypes, including HER2+ disease (8). In addition, the immune compartment has a profound impact on HER2+ BC prognosis and response to systemic treatment (9). In HER2+ BC patients treated with NAT, higher pre-treatment tumor-infiltrating lymphocytes (TILs) have been associated with increased pCR rates and survival benefits (10). Nevertheless, TIL evaluation on residual disease (RD-TILs) in HER2+ BC has provided contradictory results, as high post-NACT TILs have been associated with prognosis in both directions (11–13), and several other reports have failed to establish a prognostic role for RD-TILs (14–17).

This study aimed to evaluate the prognostic significance of RD-TIL levels in a multicentric cohort of retrospectively selected HER2+ BC patients with RD after anti-HER2 plus chemotherapy (CT) NAT. Furthermore, we assessed the feasibility of combining the prognostic information provided by RCB and RD-TILs into a composite score (RCB + TILs).

Materials and Methods

Population

Patients (female or male ≥ 18 years) diagnosed with HER2+ BC and treated with CT plus anti-HER2-based NAT at three Italian Institutions (Istituto Oncologico Veneto – IRCCS–Padova, Azienda USL–IRCCS–Reggio Emilia, Humanitas Research Hospital – IRCCS – Milano) between 2001 and 2021

were identified from prospectively maintained databases. HER2+ BC patients not receiving chemotherapy or anti-HER2 treatment as part of NAT were excluded.

Clinicopathological, treatment, and follow-up data were also collected.

Pathology

HER2 status was evaluated according to ASCO/CAP recommendations in place at the time of diagnosis, and cases were considered HER2+ in case of IHC score 3+ and/or HER2 gene amplification by in situ hybridization (ISH).

RCB and **TILs** levels were evaluated on hematoxylin and eosin (H&E)-stained slides from the surgical samples.

The RCB score was calculated according to the standard methodology (6) using online software (http://www.mdanderson.org/breastcancer_RCB), which integrates data regarding primary tumor bed area, overall cancer cellularity, percentage of in situ disease, number of positive lymph nodes, and diameter of the largest metastasis. RCB was considered as a continuous and categorical variable (classes I/II/III) by adopting predefined validated cut-offs (6).

TIL levels were assessed, blinded to patient data, according to the International Immuno-oncology biomarker working group recommendations for TIL evaluation of RD (18,19).

Statistical analysis

Statistical analyses were performed using IBM SPSS (version 24; (SPSS, RRID:SCR_002865) and R (version 4.2.2; RRID:SCR_001905).

Descriptive statistics were used to analyze patient demographics and clinical characteristics. For continuous variables, mean, median, range, and quartiles were computed. The distribution of continuous variables across subgroups was assessed using Mann–Whitney and Kolmogorov–Smirnov nonparametric tests. Comparisons of categorical variables across groups were performed using the chi-square test (χ^2).

The primary survival endpoint of the present analysis was overall survival (OS), defined as the time from surgery to death from any cause or last follow-up; patients without an OS event were censored at the time of the last follow-up. For descriptive purposes, we also assessed disease-free survival (DFS), defined as the time from surgery to recurrence (local or distant), death from any cause or last follow-up; patients without an DFS event were censored at the time of the last follow-up. The Kaplan-Meier method was used to estimate survival curves, the log-rank test was

used to perform survival analyses, and the Cox regression model to calculate hazard ratios (HRs) and 95% confidence intervals (CIs). Harrell's concordance index (c-index) (20) was used to determine the optimal prognostic cut-off for RD-TILs. C-indices were evaluated to compare the performance of the prognostic models (21).

Ethical considerations

The study was approved by the ethics committee of the participating centers, and all relevant ethical regulations were complied with. Tumor samples were collected after approval from the respective Institutional Review Board and in accordance with the Declaration of Helsinki. Informed written consent was obtained from each subject who was alive at the time of study entry.

Data availability

The datasets that support the findings of this study are not publicly available in order to protect patient privacy. The data will be available on reasonable request from the corresponding author: VG, valentina.guarneri@unipd.it.

Results

Patients' characteristics

A total of 295 HER2+ BC women undergoing anti-HER2-based NAT plus chemotherapy were selected. 66.1% of patients (n=195) exhibited RD (**Figure 1**).

Clinicopathological characteristics of the overall population are shown in **Supplementary Table 1**.

Clinicopathological features of the RD cohort are presented in **Table 1**.

The representativeness of Study Participants is shown in **Supplementary Table 2**.

Most patients had ductal histology, poor differentiation, and a clinically negative nodal status. In addition, almost two-thirds of patients had hormone receptor-positive disease. All patients underwent anti-HER2 plus CT-based NAT. Neoadjuvant CT consisted of anthracycline+taxane in more than 80% of the patients. After NAT, the nodal status was negative in most cases. In the adjuvant setting, the majority of patients received trastuzumab and ≈12% received escalated treatment with T-DM1. Almost two-thirds of our population was exposed to adjuvant endocrine treatment.

RCB and TILs evaluation

RCB and RD-TILs were available for 180 and 159 patients, respectively.

The median RCB score was 1.7 (Q1-Q3 1.4-2.9). RCB class distribution was 21.7% (n= 39) class I, 62.2% (n= 112) class II, and 16.1% (n= 29) class III. No differences in the RCB class distribution were observed according to hormone receptor status (p=0.23).

Median RD-TILs were 5.0% (Q1-Q3 1,0 – 10.0 %). Fifteen% of RD-TILs were identified as the optimal prognostic cutoff for OS, with TILs <15% defined as Low-RD-TIL and ≥15% as High RD-TILs. The distribution of low RD-TILs and high RD-TIL categories was 82.4% and 17.6%, respectively (**Figure 2**). RD-TILs were significantly associated with hormone receptor status, with hormone receptor-negative patients having a significantly higher likelihood of exhibiting high levels of RD-TILs (p=0.012) (**Figure 2**).

RCB and RD-TILs were not significantly correlated with each other (Pearson correlation, p=0.360). In addition, the distribution of median RD-TILs was not significantly different according to RCB classes, with numerically lower RD-TILs in RCB I and no difference between RCB II and RCB III (median RD-TILs in RCB I, II, III: 2% vs 5% vs 5%, p=0.054).

Prognostic role of RCB and RD-TILs

At a median follow-up of approximately 84 months, 37 patients died. Of these events, 91.9% (n=34) were deaths related to breast cancer and 8.1 % (n=3) were deaths from other causes.

RCB was significantly associated with OS both when considered as a continuous (HR 1.97 [95% CI 1.41-2.74], p<0.001, Figure 3A) and a categorical variable (p<0.001, **Figure 3A**). RD-TILs were significantly associated with OS, with patients exhibiting high RD-TILs experiencing significantly poorer OS as compared to those with low RD-TILs (HR 2.32, 95%CI 1.07-5.03, p=0.028, **Figure 3B**). The significant prognostic role of RD-TILs was driven by the RCB-class II subgroup (n=103, HR 3.25, 95%CI 1.1-9.7, p=0.036), while the prognostic association between RD-TILs and OS was not significant within RCB classes I and III.

Given the enrichment of our cohort for hormone receptor-positive cases, we assessed the prognostic role of RD-TIL specifically in this subgroup, confirming the significance association with OS (HR 3.65, 95%CI 1.4-9.4)

In multivariate analysis, both RCB (index) and RD-TIL categories maintained their independent prognostic value for OS (RCB: HR 1.90 [95%CI 1.35-2.67] $p < 0.001$; RD-TILs: HR 2.30 [95%CI 1.06-5.01], $p = 0.036$) (**Table 2**).

For descriptive purposes, the association between RCB and RD-TILs with DFS was also explored. **Supplementary Table 3** shows the multivariate regression model including RCB and RD-TILs. Both RCB and RD-TILs were independently associated with DFS.

We then prognostically stratified patients according to the integrated evaluation of RD-TIL categories and RCB classes, focusing on the intermediate and extensive RD burden categories (RCB II – TIL low, RCB II – TIL high, RCB III – TIL low, RCB III – TIL high). We observed that RD-TILs were capable of refining the risk assessment, with high RD-TILs determining a detrimental effect within the same RCB class, as shown in Supplementary Figure 1.

A combined score, RCB+TIL, was calculated from the estimated coefficient of RD-TILs (dichotomous, high vs. low) and the RCB index (continuous) in a bivariate logistic model for OS: **TILs (0=low/1=high) \times 0.83 + RCB (index) \times 0.64**. RCB+TIL score was significantly associated with OS (HR 2.72, 95% CI 1.72-4.31, $p < 0.001$), with a decreasing probability of OS with increasing RCB+TIL levels, as shown in **Figure 4A**.

By applying the Harrel C test for all RCB-TIL values, we identified 1.72 as the optimal prognostic cutoff for OS. We found a highly significant association between the dichotomous RCB-TILs and OS (HR 4.36, 95% CI 2.01-9.48, $p < 0.001$), as shown in **Figure 4B**.

The C-index for OS of the RCB+TIL group was numerically higher than that of the RCB (0.73 vs 0.68 $p = 0.08$) and significantly higher than that of the RD-TILs (0.73 vs 0.58, $p = 0.007$).

For descriptive purposes we also developed the RCB-TIL combined score calculated from the estimated coefficient of RD-TILs (dichotomous, high vs. low) and the RCB index (continuous) in a bivariate logistic model for DFS (Supplementary results). The combined score (continuous) was significantly associated with DFS.

Exploratory analysis

- Baseline TILs

Baseline TILs were available for 156 patients. Baseline TILs were significantly associated with pCR both when considered as a continuous ($p < 0.001$) and a categorical variable by considering the already validated cutoffs(22) (pCR rates in high versus low baseline TILs: 64% vs 33%, $p < 0.001$), as shown in Supplementary Figure 2a. This association was confirmed and was particularly pronounced in patients receiving neoadjuvant anti-HER2 treatment in association with taxane-only chemotherapy (N=27, pCR rates in high versus low baseline TILs: 82% vs 44%, $p < 0.001$, Supplementary Figure 2b).

- TIL dynamics during NAT

A matched evaluation of baseline TILs was available for 84 patients. In the overall cohort of patients with RD, TIL levels did not significantly differ between baseline biopsy and RD (median baseline TILs and RD-TILs: 13.9% vs. 9.8%, $p = 0.300$, **Supplementary Figure 3a**). However, when differentiating between patients with high RD-TILs vs low-RD-TILs, an inverse dynamic emerged. In particular, while a significant increase in TILs after NAT exposure was observed in patients with high RD-TILs (median baseline TILs vs. RD-TILs: 13.3% vs. 38.2%, $p < 0.001$), with all cases showing some degree of TIL increase (**Supplementary Figure 3b**), a numerical decrease in TILs was instead seen in patients with low RD-TILs (median baseline TILs vs. RD-TILs: 11.8% vs. 3.8%, $p = 0.113$, **Supplementary Figure 3c**).

TIL delta between baseline and RD (continuous) did not significantly differ across RCB classes ($p = 0.257$). In addition, among patients with low RD-TILs, we did not observe any significant association between TIL-delta and RCB class distribution ($p = 0.161$).

Discussion

In this study, we investigated the prognostic role of TIL levels on RD in a cohort of retrospectively selected HER2+ BC patients who failed to achieve pCR after anti-HER2 plus taxane+/-anthracycline-based CT NAT.

We reported a significant inverse association between TILs on RD and OS, with patients exhibiting more than 15% of RD-TIL levels experiencing significantly shorter OS as compared to those with lower RD-TILs. Interestingly, while TIL levels evaluated on pretreatment biopsies have been consistently correlated with higher pCR rates and improved survival in HER2+ BC patients (23–26), the evaluation of TILs on RD in patients failing to achieve pCR has provided contradictory results. In fact, some studies have found higher RD-TILs to retain a positive prognostic value (11), while

other groups reported no prognostic association at all (14–17). In line with our evaluation, a worse prognostic significance has also been suggested (12,13). In this latter regard, similarly to our study, Hamy et al. reported a negative prognostic association between high RD-TILs and DFS in a cohort of 175 HER2 + BC patients treated with NAT (12,13), which was confirmed by multivariate analysis (13). The cutoff for defining high TILs in Hamy’s and our study slightly differed (25% and 15%, respectively), thus making results not entirely comparable. However, although the retrospective nature of the data produced so far, as well as analytical challenges, could limit the interpretation of available evidence, these data remain in direct contrast to what has been observed in TNBC, where high RD-TILs have been consistently associated with substantially better outcomes (27,28). Interestingly, the negative prognostic role of RD-TILs was driven by the moderate RD burden (RCB class II) cohort, while no significant association was found within the minimal and extensive RD burden categories (RCB class I and III, respectively). A similar observation – albeit in the opposite direction – has been made for the prognostic role of RD-TILs in TNBC, where the magnitude of the positive prognostic impact of RD-TILs was greater within the RCB class II subgroup with no effect within the RCB class III category(28). Although this analogy appears intriguing, the underrepresentation, in our cohort, of patients with RCB class I and III precludes the possibility to solidly interpret our results, which may reflect either a true differential prognostic effect of RD-TILs according to RD burden or a limitation in terms of statistical power.

The apparently counterintuitive behavior of RD-TILs in HER2+ BC as compared to TNBC could be interpreted as the result of the unique immune-cancer cell interaction occurring within HER2+ disease, where the simultaneous evidence of incomplete eradication of cancer cells by chemotherapy plus anti-HER2 targeted treatment and high levels of immune infiltrate may reflect a self-sustaining vicious circle of detrimental mutual relationship between cancer cells and immune cells, unbalanced towards an immunosuppressive/pro-tumorigenic polarization. In fact, RD-TIL evaluation constitutes the bulk measurement of different lymphocyte subpopulations, including T cells, B cells, and NK cells, possessing different relative densities, phenotypes(29,30) spatial distributions, and complex interactions with their surroundings (29) which can influence their functional status and ultimately converge to determine their clinical significance in terms of treatment response and prognosis(30,31,31–34). Our results integrate well within this framework, where the significant negative impact of RD-TILs on prognosis may be interpreted as the direct and deleterious result of these complex immune-tumor interactions. Of course, future research should focus on better characterizing the composition of the RD immune infiltrate, by including markers

of antibody-dependent cellular cytotoxicity/phagocytosis (e.g. NK cells(31,32)) or informing regarding the polarization either in immunosuppressive or cytotoxic direction (e.g. CD8/FOXP3 ratio(31))

We also assessed the association between the **RCB index** and OS in our cohort, confirming and strengthening the strong prognostic value of RCB in HER2+ BC patients treated with taxane+/- anthracycline-based CT and anti-HER2 treatment (8). Importantly, RD-TILs and RCB were not significantly correlated with each other, and both preserved their independent association with OS in multivariate analysis. These findings suggest the complementarity of these two biomarkers from a prognostic point of view. Intriguingly, when prognostically stratifying patients according to the integrated evaluation of RD-TILs and RCB classes, we observed that RD-TILs were capable of refining the risk assessment of HER2+ BC patients failing to achieve pCR. In particular, by focusing on moderate and extensive RD burden categories, we observed that within the same RCB class, RD-TILs were capable of “up/down-staging” the risk category determined by the sole evaluation of RD burden. This observation is appealingly similar – albeit in opposite sense – to what has already been validated within TNBC(35), and further emphasizes the importance of validating RD-TILs in HER2+ BC patients undergoing neoadjuvant treatment, by integrating their use within the framework of risk assessment in the experimental scenario and, in a close future, even in the daily practice setting. These observations lay the foundation for the development of a novel composite prognostic score incorporating both RD-TILs and RCB index (the so-called **RCB+TIL**). Importantly, the RCB+TIL composite score was significantly associated with OS, outperforming the prognostic performance of RD-TILs alone, and providing numerically stronger prognostic information than the RCB index. These findings provided proof of principle that the incorporation of data reflecting both the burden and immune biology of RD in HER2+ BC patients failing to achieve pCR after standard NAT may be more informative than the isolated evaluation of the two single biomarkers, thus adding a further layer of knowledge regarding the complex interaction between cancer, immunity, and systemic treatments. A subtler consideration regarding the association between this novel composite prognostic score and the endpoint OS suggests that the co-existence of a high burden of residual disease and fraudulent immune infiltration may actually affect the entire natural history of HER2+ BC.

To our knowledge, this is the first attempt to combine the prognostic information provided by RCB with RD-TILs in HER2+ BC patients. Previous studies investigated the prognostic value of composite models integrating residual cellularity/tumor with immune information; however, they focused on

TILs measured at baseline or early during neoadjuvant treatment, thus making their results not comparable to ours (25,36). If validated in larger prospective cohorts, the new prognostic model provided in this study may contribute to a more reliable prediction of the outcome of the heterogeneous population of HER2+ BC patients failing to achieve complete clearance of cancer cells from the breast and axilla after standard neoadjuvant therapy.

The value of our observations is further appealing considering the results of our exploratory analysis aimed at investigating TIL dynamics under NACT exposure. Interestingly, although this analysis involved only a subgroup of patients and should therefore be interpreted with caution, it provided the insight of a diametrically opposed behavior of TIL evolution in patients with high vs. low RD-TILs, with the first experiencing a significant increase from baseline and the latter a numerical decrease from baseline, revealing that the immune microenvironment of RD reflects acquired mechanisms possibly shaped by NAT exposure. This ultimately generates the hypothesis that while baseline TILs may reflect the intrinsic immunogenicity features of HER2+ BC, RD-TILs could more comprehensively capture the complex interaction between tumor, host, and treatments. Importantly, although previous studies consistently demonstrated a highly dynamic behavior of immune infiltration under neoadjuvant chemotherapy + anti-HER2 treatment (9,25,37), none of these studies assessed TIL dynamics using our highly reproducible approach (18).

Overall, our findings may provide the rationale for redefining the endpoints for neoadjuvant trials, switching from a purely quantitative and punctiform perspective towards a more qualitative, dynamic and integrated appraisal of RD, thus well integrating with accumulating evidence highlighting the sub-optimality of pCR, regarded in isolation, as a prognostic biomarker in HER2+ BC(38,39). Within this specific framework, the RCB+TILs composite model may assist in the identification of patients at high risk of relapse, who may potentially benefit, in experimental platforms, from integrated systemic approaches in the post-neoadjuvant setting, with the aim of disrupting the vicious loop established between micro-metastatic cancer cells and host immunity, sustaining both anti-HER2 treatment resistance and anti-tumor immune anergy. Indeed, it can be speculated that the administration of post-neoadjuvant strategies exclusively focused on targeting HER2 might not be sufficient in patients failing to achieve pCR after CT+anti-HER2 NAT and exhibiting high RD-TILs/RCB-TIL scores. In this context, although results from trials investigating immunotherapy activity and efficacy in unselected HER2+ BC have been unsatisfactory so far(40), the contextual evaluation of TILs and RCB into the RCB-TIL composite model may allow the

identification of patients with suboptimal responses to anti-HER2 based NAT and an enhanced immune infiltration, thus potentially serving as a reproducible and easily obtainable tool to guide patient selection in the future development of anti-HER2 plus immunological integrated treatment strategies for the post-neoadjuvant management of high-risk HER2+ BC patients.

Finally, we also performed an exploratory analysis aimed at assessing the role of baseline TILs in pCR prediction. We confirmed in our cohort of HER2+ BC patients the strong association between more than 10% of baseline TILs and the subsequent achievement of pCR, as previously demonstrated(22), thus solidifying the solid role of baseline TILs in the identification of patients with an higher likelihood of achieving pCR after standard neoadjuvant treatment. Interestingly, this association was confirmed and was numerically even more pronounced in the subgroup of patients receiving anthracycline-free chemotherapy backbone, with more than 80% of patients with intermediate/high TILs achieving pCR after taxane-only chemotherapy (+ HER2 blockade). This observation is particularly timed given the great enthusiasm regarding the possibility of omitting anthracycline from the neoadjuvant chemotherapy backbone of HER2+ BC patients(41) fueled by preliminary data suggesting a more favorable risk/benefit ratio of anthracycline-free neoadjuvant regimes(42,43). Within this framework, our results, if validated, suggests that TILs may find a positioning in guiding the selection of patients capable of achieving pCR with a de-escalated neoadjuvant approach.

This study has several **strengths**. First, it constitutes one of the largest multi-institutional evaluations of RD-TILs in a cohort of patients with HER2+ BC treated with neoadjuvant anti-HER2 treatment plus taxane+/-anthracycline chemotherapy. Additionally, RD-TILs were assessed according to standardized guidelines (18). Moreover, the adoption of OS as a prognostic endpoint allowed us to appraise the impact of the proposed prognostic model on the evolution of the disease in HER2+ BC with RD after NAT.

We acknowledge some **limitations**, including the retrospective design of our study and the inclusion of a subpopulation of patients not receiving anti-HER2 escalated therapy, such as neoadjuvant pertuzumab or post-neoadjuvant TDM1, which could potentially have different interactions with the RD immune compartment and therefore impact the prognostic information derived from RD-TILs. Moreover, our results do not envisage the possible differential impact of different chemotherapy regimens on shaping the RD immune microenvironment (44). However, since approximately 85% of patients received anthracycline-taxane-based neoadjuvant chemotherapy, the possible confounding impact of this bias appears resized. Additionally,

although the investigation of matched baseline TILs provided highly informative insights, it involved a relatively small subgroup of patients, and thus requires further investigation. Moreover, although the prognostic value of the RCB+TIL composite model was not affected by hormone receptor status, our HER2+ cohort was enriched in hormone receptor-positive BC patients, which may be associated with a different immune milieu (45). As we did not characterize gene expression profiling (GEP) regarding intrinsic molecular subtypes, we cannot exclude the influence of this variable in the interpretation of our data. Although in HER2+BC, the HER2-enriched is the most predominant intrinsic subtype, all the different intrinsic molecular subtypes can be represented within HER2+ disease (46,47). Finally, our population was enriched for RCB II cases, thus limiting the statistical power to properly interpret the possibly differential prognostic significance of RD-TILs across different RCB classes

In conclusion, we have reported an independent negative prognostic impact of higher RD-TILs after anti-HER2+CT-based NAT, which might underlie an imbalance of the RD immune microenvironment towards immunosuppressive features. We also provided a new composite prognostic score based on RCB+TIL, which was significantly associated with OS, proving to be more informative than the isolated evaluation of RCB and RD-TILs.

Acknowledgments:

Fondazione AIRC under 5 per mille 2019 - ID. 22759 program- VG; Veneto Institute of Oncology IOV-IRCCS to MVD; VG; DOR funding from the University of Padova to GG, MVD, VG;

Role of the Funder/Sponsor: The funders had no role in the design and conduct of the study; collection, management, analysis, and interpretation of the data; preparation, review, or approval of the manuscript; or decision to submit the manuscript for publication.

References

1. Miglietta F, Dieci MV, Griguolo G, Guarneri V. Neoadjuvant approach as a platform for treatment personalization: focus on HER2-positive and triple-negative breast cancer. *Cancer Treat Rev.* 2021;98:102222–102222.
2. Broglio KR, Quintana M, Foster M, Olinger M, McGlothlin A, Berry SM, et al. Association of Pathologic Complete Response to Neoadjuvant Therapy in HER2-Positive Breast Cancer With Long-Term Outcomes: A Meta-Analysis. *JAMA Oncol.* 2016;2:751–60.
3. Cortazar P, Zhang L, Untch M, Mehta K, Costantino JP, Wolmark N, et al. Pathological complete response and long-term clinical benefit in breast cancer: The CTNeoBC pooled analysis. *The Lancet.* 2014;384:164–72.
4. Spring LM, Fell G, Arfe A, Sharma C, Greenup R, Reynolds KL, et al. Pathologic Complete Response after Neoadjuvant Chemotherapy and Impact on Breast Cancer Recurrence and Survival: A Comprehensive Meta-analysis. *Clin Cancer Res Off J Am Assoc Cancer Res.* 2020;26:2838–48.
5. von Minckwitz G, Huang C-S, Mano MS, Loibl S, Mamounas EP, Untch M, et al. Trastuzumab Emtansine for Residual Invasive HER2-Positive Breast Cancer. *N Engl J Med.* Massachusetts Medical Society; 2019;380:617–28.
6. Symmans WF, Peintinger F, Hatzis C, Rajan R, Kuerer H, Valero V, et al. Measurement of residual breast cancer burden to predict survival after neoadjuvant chemotherapy. *J Clin Oncol.* 2007;
7. Peintinger F, Sinn B, Hatzis C, Albarracin C, Downs-Kelly E, Morkowski J, et al. Reproducibility of residual cancer burden for prognostic assessment of breast cancer after neoadjuvant chemotherapy. *Mod Pathol Off J U S Can Acad Pathol Inc.* 2015;28:913–20.
8. Symmans WF, Wei C, Gould R, Yu X, Zhang Y, Liu M, et al. Long-term prognostic risk after neoadjuvant chemotherapy associated with residual cancer burden and breast cancer subtype. *J Clin Oncol.* 2017;35.
9. Griguolo G, Pascual T, Dieci MV, Guarneri V, Prat A. Interaction of host immunity with HER2-targeted treatment and tumor heterogeneity in HER2-positive breast cancer. *J Immunother Cancer [Internet].* 2019;7. Available from: <https://doi.org/10.1186/s40425-019-0548-6>
10. Solinas C, Ceppi M, Lambertini M, Scartozzi M, Garaud S, Fumagalli D, et al. Tumor infiltrating lymphocytes in HER2-positive breast cancer patients treated with neoadjuvant chemotherapy plus trastuzumab, lapatinib or their combination: A meta-analysis of published randomized clinical trials. *Ann Oncol.* 2017;28.

11. Kurozumi S, Inoue K, Matsumoto H, Fujii T, Horiguchi J, Oyama T, et al. Prognostic utility of tumor-infiltrating lymphocytes in residual tumor after neoadjuvant chemotherapy with trastuzumab for HER2-positive breast cancer. *Sci Rep.* 2019;9.
12. Hamy AS, Pierga JY, Sabaila A, Laas E, Bonsang-Kitzis H, Laurent C, et al. Stromal lymphocyte infiltration after neoadjuvant chemotherapy is associated with aggressive residual disease and lower disease-free survival in HER2-positive breast cancer. *Ann Oncol.* 2017;28.
13. Hamy AS, Bonsang-Kitzis H, De Croze D, Laas E, Darrigues L, Topciu L, et al. Interaction between molecular subtypes and stromal immune infiltration before and after treatment in breast cancer patients treated with neoadjuvant chemotherapy. *Clin Cancer Res. American Association for Cancer Research Inc.;* 2019;25:6731–41.
14. Bianchini G, Pienkowski T, Im Y-H, Bianchi GV, Tseng L-M, Liu M-C, et al. Residual disease after HER2-directed therapies in the neosphere study: Modulation of tumor lymphocyte infiltration (TIL) and prognosis. *J Clin Oncol. American Society of Clinical Oncology;* 2016;34:517–517.
15. Force J, Howie LJ, Abbott SE, Bentley R, Marcom PK, Kimmick G, et al. Early Stage HER2-Positive Breast Cancers Not Achieving a pCR From Neoadjuvant Trastuzumab- or Pertuzumab-Based Regimens Have an Immunosuppressive Phenotype. *Clin Breast Cancer. Clin Breast Cancer;* 2018;18:410–7.
16. Griguolo G, Serna G, Pascual T, Fasani R, Guardia X, Chic N, et al. Immune microenvironment characterisation and dynamics during anti-HER2-based neoadjuvant treatment in HER2-positive breast cancer. *Nature Publishing Group;* 2021;5. Available from: <http://www.nature.com/articles/s41698-021-00163-6>
17. Ignatiadis M, Van Den Eynden G, Roberto S, Fornili M, Bareche Y, Desmedt C, et al. Tumor-infiltrating lymphocytes in patients receiving trastuzumab/pertuzumab-based chemotherapy: A TRYPHAENA Substudy. *J Natl Cancer Inst [Internet].* 2019;111. Available from: <https://academic.oup.com/jnci/article/111/1/69/4999669>
18. Dieci MV, Radosevic-Robin N, Fineberg S, van den Eynden G, Ternes N, Penault-Llorca F, et al. Update on tumor-infiltrating lymphocytes (TILs) in breast cancer, including recommendations to assess TILs in residual disease after neoadjuvant therapy and in carcinoma in situ: A report of the International Immuno-Oncology Biomarker Working Group on Breast Cancer. *Semin Cancer Biol. Academic Press;* 2018;52:16–25.
19. Salgado R, Denkert C, Demaria S, Sirtaine N, Klauschen F, Pruneri G, et al. The evaluation of tumor-infiltrating lymphocytes (TILs) in breast cancer: recommendations by an International TILs Working Group 2014. *Ann Oncol.* 2015;26:259–71.
20. Harrell FE, Califf RM, Pryor DB, Lee KL, Rosati RA. Evaluating the Yield of Medical Tests. *JAMA J Am Med Assoc.* 1982;247:2543–6.
21. Schmid M, Wright MN, Ziegler A. On the use of Harrell's C for clinical risk prediction via random survival forests. *Expert Syst Appl.* 2016;63.

22. Denkert C, Minckwitz G von, Darb-Esfahani S, Lederer B, Heppner BI, Weber KE, et al. Tumour-infiltrating lymphocytes and prognosis in different subtypes of breast cancer: a pooled analysis of 3771 patients treated with neoadjuvant therapy. *Lancet Oncol.* 2018;19:40–50.
23. Denkert C, Von Minckwitz G, Brase JC, Sinn BV, Gade S, Kronenwett R, et al. Tumor-infiltrating lymphocytes and response to neoadjuvant chemotherapy with or without carboplatin in human epidermal growth factor receptor 2-positive and triple-negative primary breast cancers. *J Clin Oncol.* 2015;
24. Heppner BI, Untch M, Denkert C, Pfitzner BM, Lederer B, Schmitt W, et al. Tumor-infiltrating lymphocytes: A predictive and prognostic biomarker in neoadjuvant-treated HER2-positive breast cancer. *Clin Cancer Res.* 2016;22:5747–54.
25. Nuciforo P, Pascual T, Cortés J, Llombart-Cussac A, Fasani R, Paré L, et al. A predictive model of pathologic response based on tumor cellularity and tumor-infiltrating lymphocytes (CeTIL) in HER2-positive breast cancer treated with chemo-free dual HER2 blockade. *Ann Oncol.* Elsevier; 2018;29:170–7.
26. Salgado R, Denkert C, Campbell C, Savas P, Nuciforo P, Aura C, et al. Tumor-infiltrating lymphocytes and associations with pathological complete response and event-free survival in HER2-positive early-stage breast cancer treated with lapatinib and trastuzumab: A secondary analysis of the NeoALTTO trial. *JAMA Oncol.* 2015;1:448–55.
27. Dieci MV, Criscitiello C, Goubar A, Viale G, Conte P, Guarneri V, et al. Prognostic value of tumor-infiltrating lymphocytes on residual disease after primary chemotherapy for triple-negative breast cancer: A retrospective multicenter study. *Ann Oncol.* Oxford University Press; 2014;25:611–8.
28. Luen SJ, Salgado R, Dieci MV, Vingiani A, Curigliano G, Gould RE, et al. Prognostic implications of residual disease tumor-infiltrating lymphocytes and residual cancer burden in triple-negative breast cancer patients after neoadjuvant chemotherapy. *Ann Oncol.* Oxford University Press; 2019;30:236–42.
29. Massa D, Tosi A, Rosato A, Guarneri V, Dieci MV. Multiplexed In Situ Spatial Protein Profiling in the Pursuit of Precision Immuno-Oncology for Patients with Breast Cancer. *Cancers.* 2022;2022:4885–4885.
30. Ladoire S, Arnould L, Apetoh L, Coudert B, Martin F, Chauffert B, et al. Pathologic Complete Response to Neoadjuvant Chemotherapy of Breast Carcinoma Is Associated with the Disappearance of Tumor-Infiltrating Foxp3+ Regulatory T Cells. *Clin Cancer Res.* American Association for Cancer Research; 2008;14:2413–20.
31. Hurvitz SA, Caswell-Jin JL, McNamara KL, Zoeller JJ, Bean GR, Dichmann R, et al. Pathologic and molecular responses to neoadjuvant trastuzumab and/or lapatinib from a phase II randomized trial in HER2-positive breast cancer (TRIO-US B07). *Nat Commun.* 2020;11.
32. McNamara KL, Caswell-Jin JL, Joshi R, Ma Z, Kotler E, Bean GR, et al. Spatial proteomic characterization of HER2-positive breast tumors through neoadjuvant therapy predicts response. *Nat Cancer.* 2021;2:400–13.

33. Muntasell A, Rojo F, Servitja S, Rubio-Perez C, Cabo M, Tamborero D, et al. NK cell infiltrates and HLA class I expression in primary HER2 β breast cancer predict and uncouple pathological response and disease-free survival. *Clin Cancer Res.* 2019;25.
34. Wolf NK, Kissiov DU, Raulet DH. Roles of natural killer cells in immunity to cancer, and applications to immunotherapy. *Nat Rev Immunol* [Internet]. 2022; Available from: <https://doi.org/10.1038/s41577-022-00732-1>
35. Loi S, Salgado R, Adams S, Pruneri G, Francis PA, Lacroix-Triki M, et al. Tumor infiltrating lymphocyte stratification of prognostic staging of early-stage triple negative breast cancer. *Npj Breast Cancer.* 2022;8:3.
36. Chic N, Luen SJ, Nuciforo P, Salgado R, Fumagalli D, Hilbers F, et al. Tumor Cellularity and Infiltrating Lymphocytes as a Survival Surrogate in HER2-Positive Breast Cancer. *JNCI J Natl Cancer Inst. Oxford Academic;* 2022;114:467–70.
37. Shang M, Chi Y, Zhang J, Chang J, Yang H, Yin S, et al. The Therapeutic Effectiveness of Neoadjuvant Trastuzumab Plus Chemotherapy for HER2-Positive Breast Cancer Can Be Predicted by Tumor-Infiltrating Lymphocytes and PD-L1 Expression. *Front Oncol. Frontiers Media S.A.;* 2022;11:5477–5477.
38. Mackelenbergh MT van, Loibl S, Untch M, Buyse M, Geyer CE, Gianni L, et al. Pathologic Complete Response and Individual Patient Prognosis After Neoadjuvant Chemotherapy Plus Anti–Human Epidermal Growth Factor Receptor 2 Therapy of Human Epidermal Growth Factor Receptor 2–Positive Early Breast Cancer. *J Clin Oncol.* 2023;41:2998–3008.
39. Squifflet P, Saad ED, Loibl S, Mackelenbergh MT van, Untch M, Rastogi P, et al. Re-Evaluation of Pathologic Complete Response as a Surrogate for Event-Free and Overall Survival in Human Epidermal Growth Factor Receptor 2–Positive, Early Breast Cancer Treated With Neoadjuvant Therapy Including Anti–Human Epidermal Growth Factor Receptor 2 Therapy. *J Clin Oncol.* 2023;41:2988–97.
40. Huober J, Barrios CH, Niikura N, Jarzab M, Chang Y-C, Huggins-Puhalla SL, et al. Atezolizumab With Neoadjuvant Anti–Human Epidermal Growth Factor Receptor 2 Therapy and Chemotherapy in Human Epidermal Growth Factor Receptor 2–Positive Early Breast Cancer: Primary Results of the Randomized Phase III IMpassion050 Trial. *J Clin Oncol.* 2022;40:2946–56.
41. Guarneri V, Azambuja E de. Anthracyclines in the treatment of patients with early breast cancer. *ESMO Open.* 2022;7:100461.
42. Schneeweiss A, Chia S, Hickish T, Harvey V, Eniu A, Hegg R, et al. Pertuzumab plus trastuzumab in combination with standard neoadjuvant anthracycline-containing and anthracycline-free chemotherapy regimens in patients with HER2-positive early breast cancer: a randomized phase II cardiac safety study (TRYPHAENA). *Ann Oncol.* 2013;24:2278–84.
43. Ramshorst MS van, Voort A van der, Werkhoven ED van, Mandjes IA, Kemper I, Dezentjé VO, et al. Neoadjuvant chemotherapy with or without anthracyclines in the presence of dual

HER2 blockade for HER2-positive breast cancer (TRAIN-2): a multicentre, open-label, randomised, phase 3 trial. *Lancet Oncol.* 2018;19:1630–40.

44. Galluzzi L, Zitvogel L, Kroemer G. Immunological mechanisms underneath the efficacy of cancer therapy. *Cancer Immunol Res.* 2016;4:895–902.
45. Dieci MV, Miglietta F, Guarneri V. Immune infiltrates in breast cancer: Recent updates and clinical implications. *Cells.* MDPI; 2021;10:27.
46. Prat A, Carey LA, Adamo B, Vidal M, Taberero J, Cortés J, et al. Molecular features and survival outcomes of the intrinsic subtypes within HER2-positive breast cancer. *J Natl Cancer Inst.* Oxford University Press; 2014;106.
47. Schettini F, Pascual T, Conte B, Chic N, Brasó-Maristany F, Galván P, et al. HER2-enriched subtype and pathological complete response in HER2-positive breast cancer: A systematic review and meta-analysis. *Cancer Treat Rev.* 2020;84.

FIGURES

Figure 1 - Flow diagram of the study

The flow diagram of the study shows the original population of the study, the subgroup of patient with residual disease, and the populations for which residual cancer burden, residual disease-tumor infiltrating lymphocytes and their integrated evaluation were available.

Abbreviations: BC, breast cancer; NAT, neoadjuvant treatment; RD, residual disease; RCB, residual cancer burden; RD-TILs, tumor infiltrating lymphocytes on residual disease; N, number.

Figure 2 – Distribution of residual TILs (RD-TILs).

Distribution of residual disease-tumor infiltrating lymphocytes in the overall cohort and according to hormone receptor status.

Abbreviations: RD-TILs, tumor infiltrating lymphocytes on residual disease; HR, hormone receptor status.

Figure 3 – Kaplan-Meier curves for overall survival (OS).

Kaplan Meir curves for OS (A) according to residual cancer burden (RCB) class (I-III) and B) residual TILs (RD-TILs).

Abbreviations: RCB, residual cancer burden; RD-TILs, tumor infiltrating lymphocytes on residual disease.

Figure 4 – Association between RCB-TIL and OS.

A) . Predicted correlation between composite RCB-TIL score and overall survival (OS, months). B) Kaplan-Meier curves for OS according to dichotomic RCB-TIL

Abbreviations: RD-TILs, tumor infiltrating lymphocytes on residual disease.

Figure 1

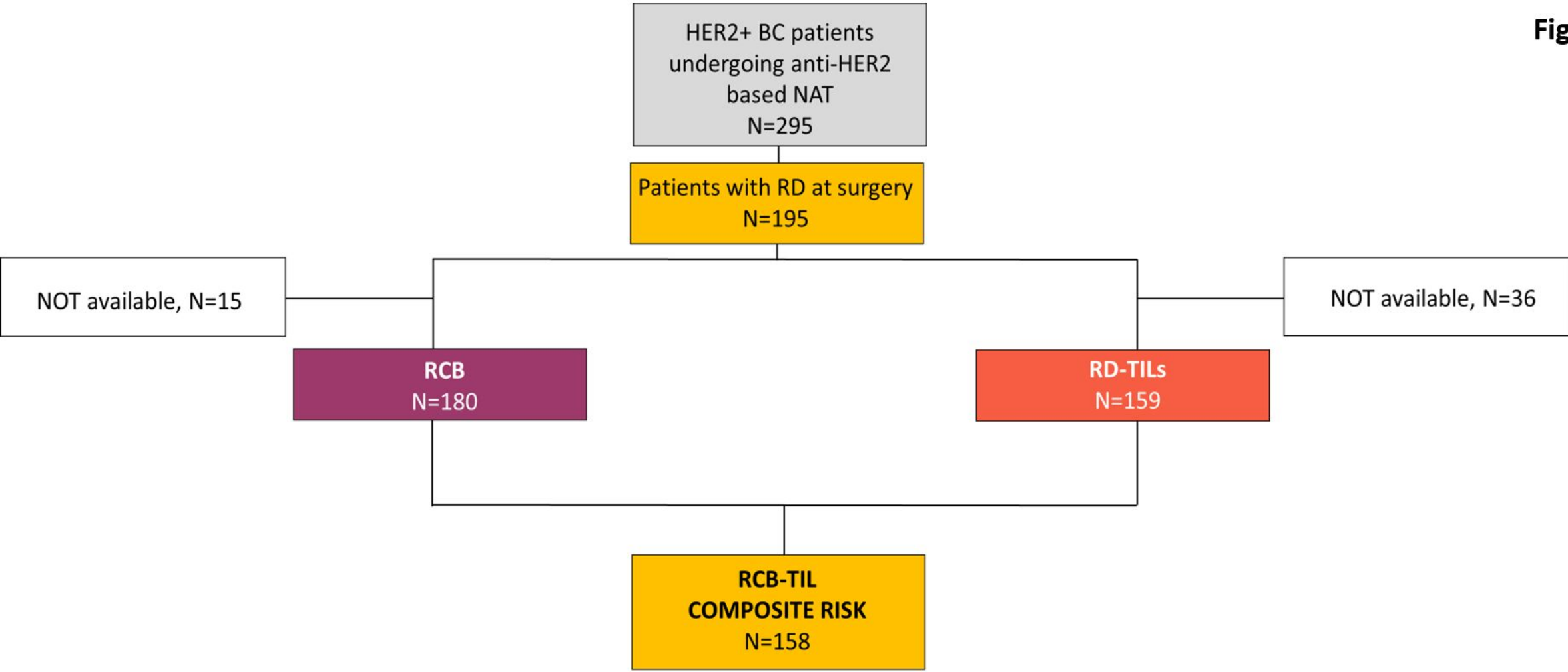
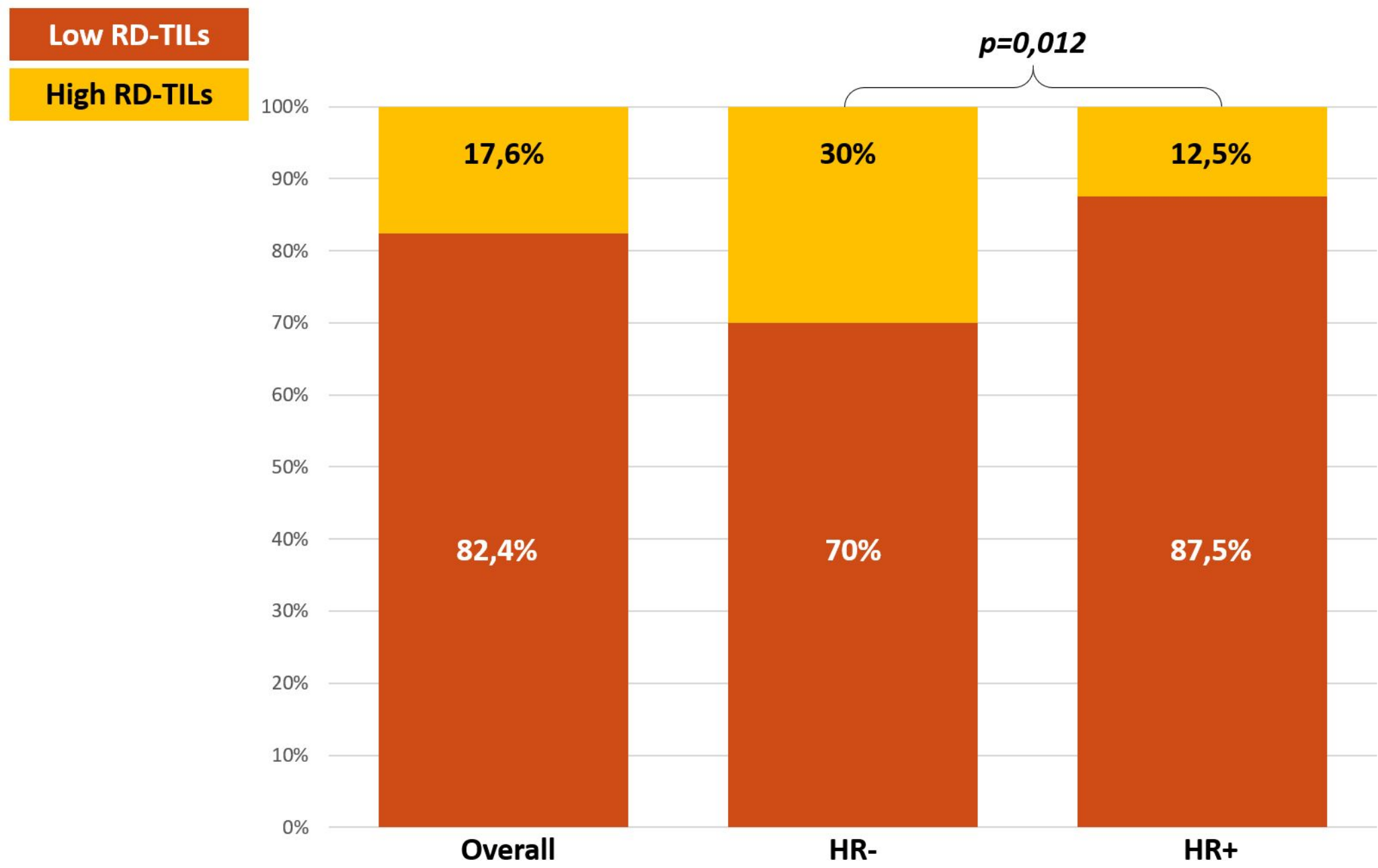
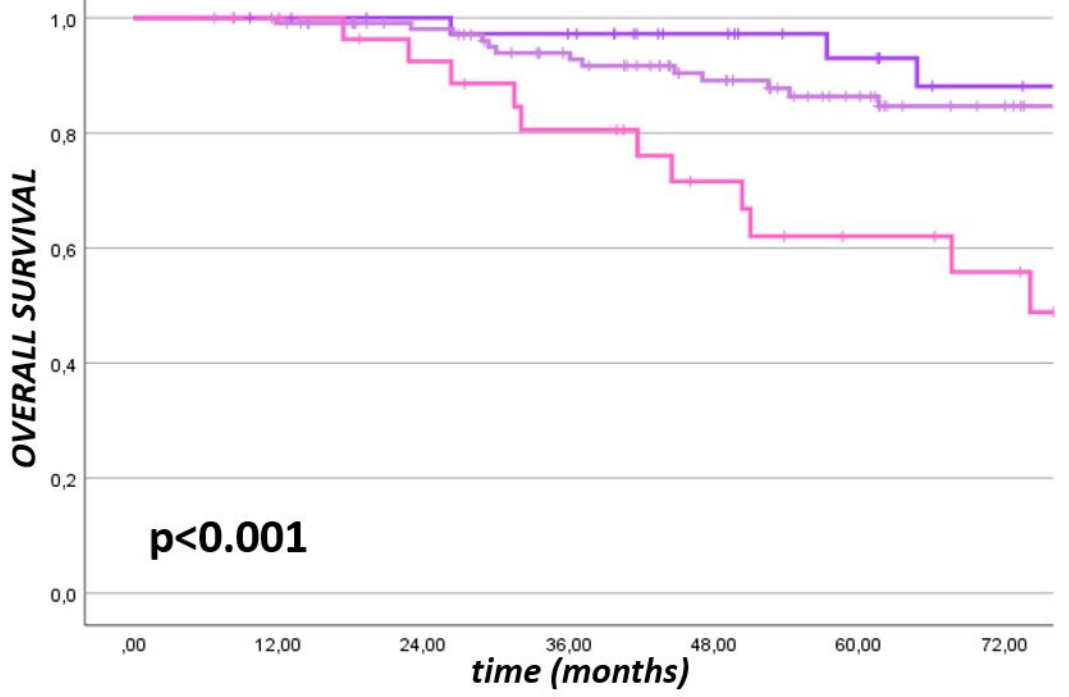


Figure 2



A

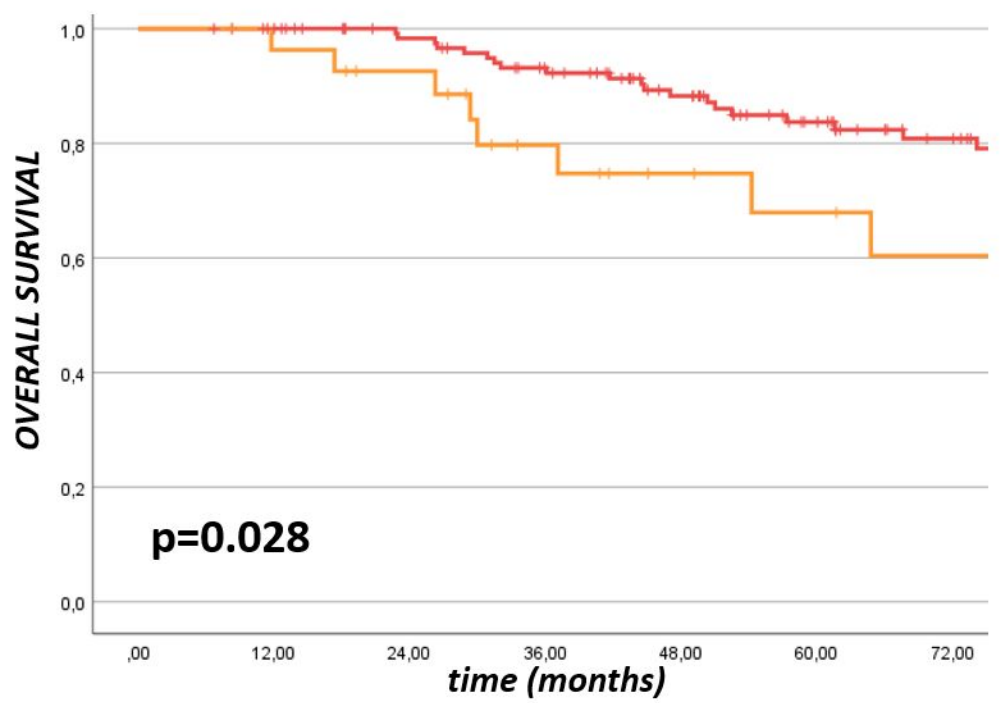
RCB



RCB I RCB II RCB III

B

RD-TILs



LOW RD-TILs HIGH RD-TILs

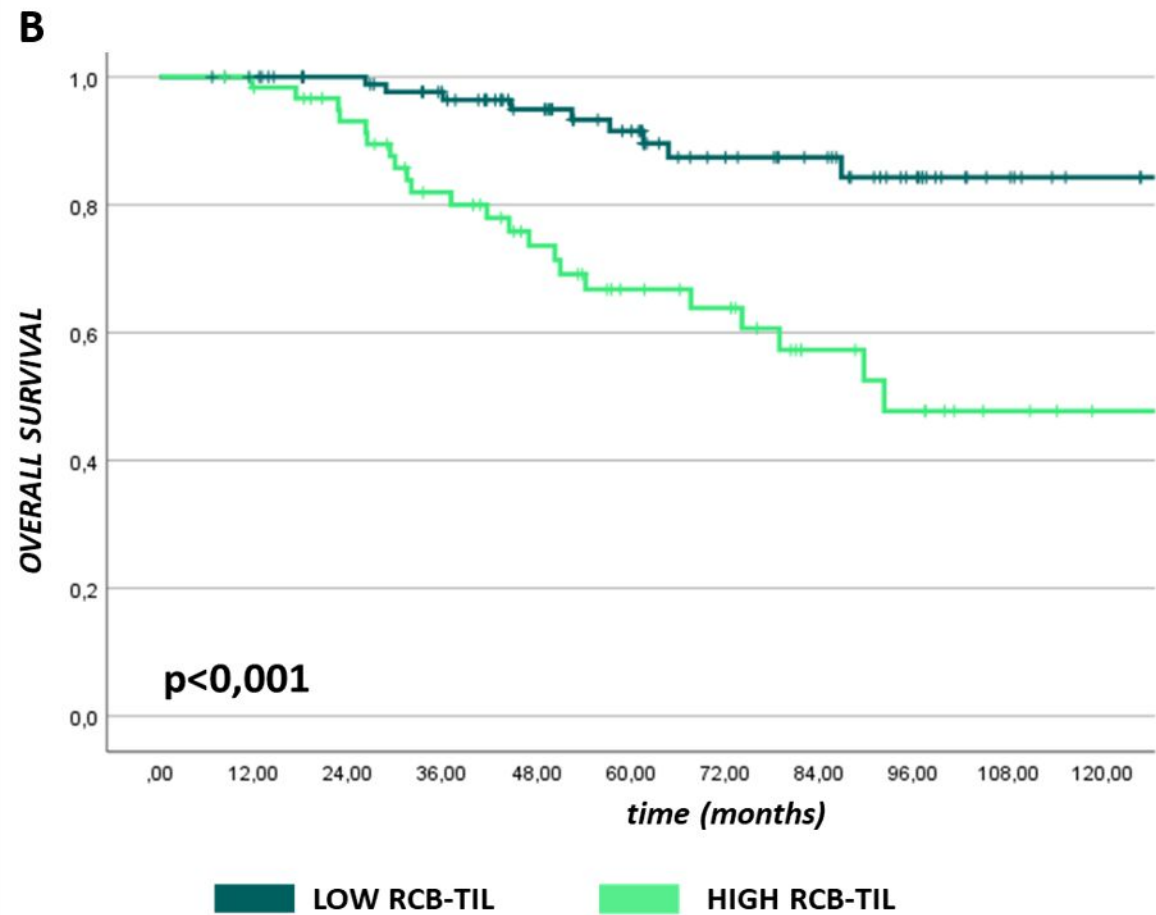
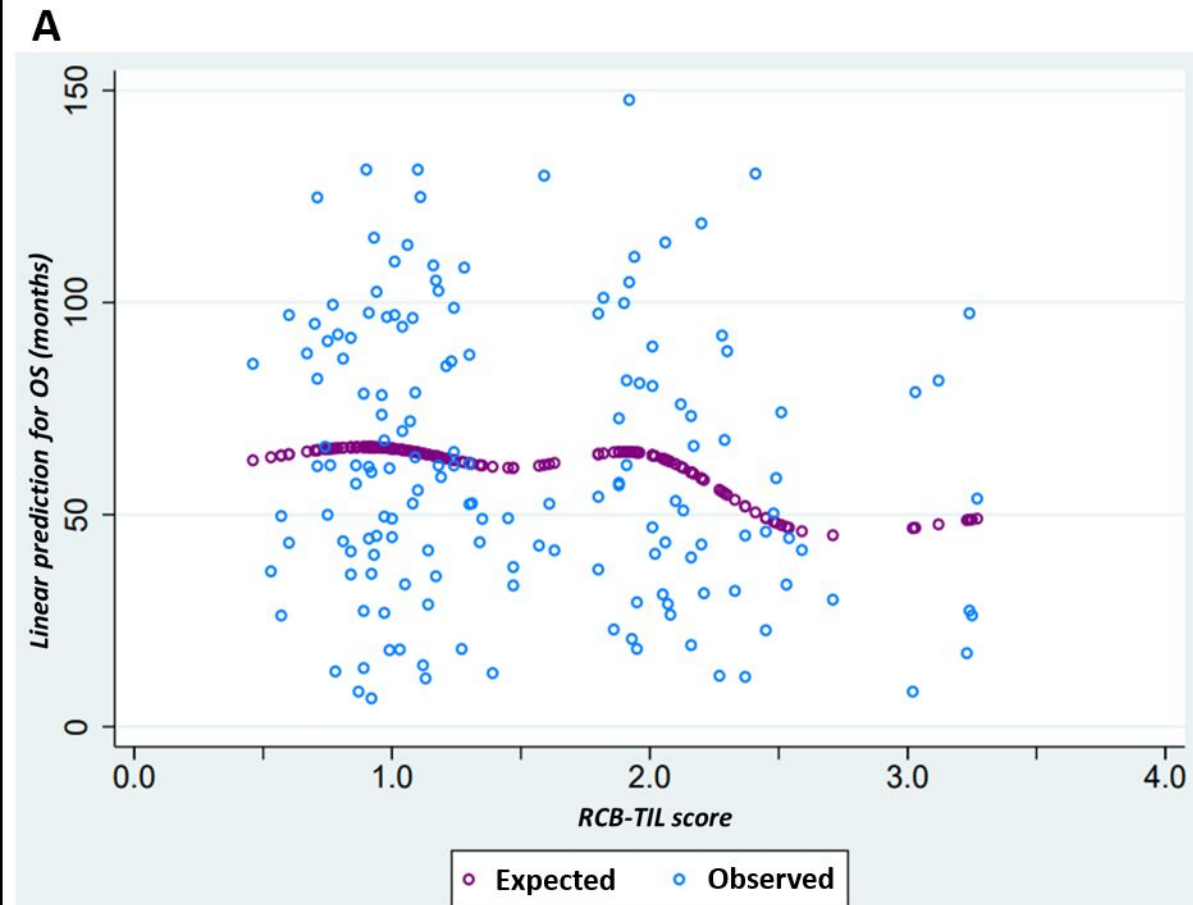


Table 1- Clinicopathological characteristics of patients with residual disease (RD) after surgery
Abbreviations: N, number; Q1-Q3, interquartile range; NA; not available; HR, hormone receptor;
CT, chemotherapy; ET, endocrine therapy

Characteristics		N (%)	Median (Q1-Q3)
Gender	Female	195 (100)	
	Male	0 (0)	
Age (years), median (Q1-Q3)			50.4 (43.7-60.3)
Histology	Ductal carcinoma	181 (92.8)	
	Lobular carcinoma	7 (3.6)	
	Other/NA	7 (3.6)	
Grading	1	0 (0.0)	
	2	75 (38.5)	
	3	104 (53.3)	
	NA	16 (8.2)	
Clinical stage - cT	1	11 (5.6)	
	2	133 (68.2)	
	3	34 (17.4)	
	4	16 (8.2)	
	NA	1 (0.6)	
Clinical stage - cN	Negative	81 (41.5)	
	Positive	114 (58.5)	
Clinical TNM	I	7 (3.6)	
	II	137 (70.2)	
	III	51 (26.2)	
Estrogen expression (%) – Median (Q1-Q3)			50 (0-90)
Progesterone expression (%) – Median (Q1-Q3)			5 (0-50)
HR status	Negative (<1%)	58 (29.7)	
	Positive (≥1%)	137 (70.3)	
Ki67 expression (%) – Median (Q1-Q3)			30 (20-45)
Neoadjuvant treatment	Anti-HER2	195 (100)	
	Anthracycline-taxane CT	165 (84.6)	
	Taxane-based CT	28 (14.3)	
	Other CT	2 (1.1)	
Post-neoadjuvant nodal stage	Negative	116 (59.5)	
	Positive	76 (39.0)	
	NA	3 (1.5)	
Adjuvant CT	Yes	53 (15.6)	
Adjuvant anti-HER2 treatment	Trastuzumab	157 (80.5)	
	T-DM1	24 (12.3)	
	None	14 (7.2)	

Adjuvant ET	Yes	125 (64.1)	
-------------	-----	------------	--

Table 2 – Multivariate cox analysis for overall survival (OS) in patients with residual disease (RD) after surgery

Abbreviations: HR, hazard ratio; RCB, residual cancer burden; cont., continuous; RD-TILs, tumor infiltrating lymphocytes on residual disease.

Factors	HR (95%CI)	P
RCB, cont.	1.90 (1.35-2.67)	<0.001
RD-TILs (high vs low)	2.30 (1.06-5.01)	0.036

RD-TIL cut-off high ($\geq 15\%$) and low ($< 15\%$). RCB, continuous; RD-TILs, residual disease; TILs, RCB; residual cancer burden