

A retrospective cohort study predicting and validating impact of the COVID-19 pandemic in individuals with chronic kidney disease

OPEN

Ashkan Dashtban¹, Mehrdad A. Mizani¹, Spiros Denaxas¹, Dorothea Nitsch², Jennifer Quint³, Richard Corbett⁴, Jil B. Mamza⁵, Tamsin Morris⁵, Mamas Mamas⁶, Deborah A. Lawlor⁷, Kamlesh Khunti⁸, CVD-COVID-UK Consortium⁹, Cathie Sudlow⁹, Harry Hemingway^{1,10} and Amitava Banerjee^{1,10,11,12}

¹Institute of Health Informatics, University College London, London, UK; ²Department of Non-Communicable Disease Epidemiology, London School of Hygiene and Tropical Medicine, London, UK; ³Faculty of Medicine, National Heart and Lung Institute, Imperial College London, London, UK; ⁴Department of Nephrology, Imperial College Healthcare NHS Trust, London, UK; ⁵Medical and Scientific Affairs, BioPharmaceuticals Medical, AstraZeneca, Cambridge, UK; ⁶Keele Cardiovascular Research Group, Centre for Prognosis Research, Keele University, Keele, UK; ⁷School of Social and Community Medicine, University of Bristol, Bristol, UK; ⁸Diabetes Research Centre, University of Leicester, Leicester, UK; ⁹British Heart Foundation Data Science Centre, Health Data Research UK, London, UK; ¹⁰Health Data Research UK, University College London, London, UK; ¹¹Department of Cardiology, Barts Health NHS Trust, London, UK; and ¹²Department of Cardiology, University College London Hospitals NHS Trust, London, UK

Chronic kidney disease (CKD) is associated with increased risk of baseline mortality and severe COVID-19, but analyses across CKD stages, and comorbidities are lacking. In prevalent and incident CKD, we investigated comorbidities, baseline risk, COVID-19 incidence, and predicted versus observed one-year excess death. In a national dataset (NHS Digital Trusted Research Environment [NHSD TRE]) for England encompassing 56 million individuals), we conducted a retrospective cohort study (March 2020 to March 2021) for prevalence of comorbidities by incident and prevalent CKD, SARS-CoV-2 infection and mortality. Baseline mortality risk, incidence and outcome of infection by comorbidities, controlling for age, sex and vaccination were assessed. Observed versus predicted one-year mortality at varying population infection rates and pandemic-related relative risks using our published model in pre-pandemic CKD cohorts (NHSD TRE and Clinical Practice Research Datalink [CPRD]) were compared. Among individuals with CKD (prevalent:1,934,585, incident:144,969), comorbidities were common (73.5% and 71.2% with one or more condition[s] in respective data sets, and 13.2% and 11.2% with three or more conditions, in prevalent and incident CKD), and associated with SARS-CoV-2 infection, particularly dialysis/transplantation (odds ratio 2.08, 95% confidence interval 2.04-2.13) and heart failure (1.73, 1.71-1.76), but not cancer (1.01, 1.01-1.04). One-year all-cause mortality varied by age, sex, multi-morbidity and CKD stage. Compared with 34,265 observed excess deaths, in the NHSD-TRE and CPRD databases respectively, we predicted 28,746 and 24,546 deaths (infection rates 10% and relative risks 3.0), and 23,754 and 20,283 deaths (observed

infection rates 6.7% and relative risks 3.7). Thus, in this largest, national-level study, individuals with CKD have a high burden of comorbidities and multi-morbidity, and high risk of pre-pandemic and pandemic mortality. Hence, treatment of comorbidities, non-pharmaceutical measures, and vaccination are priorities for people with CKD and management of long-term conditions is important during and beyond the pandemic.

Kidney International (2022) ■, ■-■; <https://doi.org/10.1016/j.kint.2022.05.015>

KEYWORDS: chronic kidney disease; mortality; SARS-CoV-2

Copyright © 2022, The Author(s). Published by Elsevier Inc. on behalf of the International Society of Nephrology. This is an open access article under the CC BY license (<http://creativecommons.org/licenses/by/4.0/>).

Chronic kidney disease (CKD) carries major global disease burden, as a risk factor for morbidity and mortality, and as the end syndrome of underlying risk factors and diseases,^{1,2} such as cancers³ and cardiovascular disease (CVD).⁴ During the coronavirus disease 2019 (COVID-19) pandemic, CKD has been associated with poor prognosis.^{5,6} Despite clinical and public health importance, CKD research to date in all stages, multimorbidity, or the general population⁷ using national-level data has been limited. The pandemic has had both direct (through infection) and indirect (through changes in health services, economic upheaval, and behavioural factors^{8,9}) impacts. The direct impact in individuals with CKD and other underlying conditions is related to baseline risk, influenced by age, sex, multimorbidity, and other sociodemographic factors.¹⁰ However, previous studies of COVID-19 in CKD have been small scale (12–1099 cases⁵), have mostly focused on end-stage CKD, and have ignored major comorbidities (either most common in CKD or related to risk of COVID-19 mortality). Few risk stratification tools are used in clinical practice for individuals

Correspondence: Amitava Banerjee, Institute of Health Informatics, Institute of Health Informatics, University College London, 222 Euston Road, London NW1 1DA, UK. E-mail: ami.banerjee@ucl.ac.uk

Received 7 March 2022; revised 26 April 2022; accepted 9 May 2022

with CKD or prediction of CKD, and those that include CKD usually do not consider different CKD stages. Better characterization of baseline risk in people with CKD may inform individual and population approaches to CKD prevention and treatment and integrated management of chronic diseases.

CKD, already known to increase baseline risk of mortality, is associated with increased risk of severe acute respiratory syndrome coronavirus 2 (SARS-CoV-2) infection, disease severity, hospital¹¹ and intensive care admission,¹² and mortality. The role of other risk factors and underlying conditions in risk of COVID-19 in people with CKD requires more detailed investigation.^{13–15} There are clinical practice tools for risk stratification of COVID-19 patients in the community and hospitals, but inclusion of CKD is as a binary variable, and so the spectrum of risk faced by individuals with CKD has not been fully considered. Such analyses are important in risk communication to patients, public and health professionals, as well as policies to suppress infection rate (IR), such as social distancing and physical isolation. Meanwhile, more nuanced investigation of the risk associated with CKD may inform clinical care, COVID-19 vaccination strategies, as well as public health approaches to CKD after the pandemic.^{16–19}

Using national, population-based electronic health records (EHRs), in individuals with prevalent and incident CKD, we investigated the following: (i) underlying conditions; (ii) mortality risk; (iii) incidence of SARS-CoV-2 infection, and (iv) prediction and validation of pandemic-related excess deaths.

METHODS

Study design and data sources

We conducted a retrospective, population-based cohort study using NHS Digital Trusted Research Environment for England (NHSD TRE)²⁰: a national database developed for pandemic-related research, linking primary care,²¹ Hospital Episode Statistics Admitted Patient Care, COVID-19 trajectories,²² COVID-19 vaccination, and mortality information from the Office for National Statistics Civil Registration of Deaths (Supplementary Figure S1). To investigate multimorbidity, baseline risk, incidence, and mortality, in individuals with CKD (aged ≥ 18 years), we defined “prevalent CKD” as ≥ 6 months before the onset of pandemic (March 1, 2020) without history of COVID-19, and “incident CKD” as new onset from March 1, 2020, to March 1, 2021, without history of COVID-19 before developing CKD. To predict 1-year COVID-19-related excess deaths based on prepandemic mortality risk, prevalent CKD at January 1, 2019, was defined using similar criteria. To show applicability of our methods to less complete, less up-to-date data sets, we also used Clinical Practice Research Datalink (CPRD) Gold data (as in our previous research¹⁵) to define prevalent CKD at April 6, 2014, by either diagnosed CKD or 2 estimated glomerular filtration rate measures (by Modification of Diet in Renal Disease-4 algorithm²³) ≥ 6 months before index date.

Having an underlying condition, for all cohorts, was defined as having ≥ 6 months’ history of the condition: (i) before index date for prevalent CKD and (ii) before incidence date for incident CKD.

Number of underlying conditions, where stated, was based on 6 conditions: chronic obstructive pulmonary disease, asthma, CVD, cancer, diabetes, and chronic liver disease. COVID-19 mortality was defined as mortality within 28 days of a positive test result. For SARS-CoV-2 incidence rate in prevalent CKD, disease-free time was estimated from earliest date before death or first-dose vaccination. Incident CKD was defined as SARS-CoV-2 positive ≥ 14 days after developing CKD. Disease-free time was measured from date of incident CKD. Crude incidence rate did not account for vaccination or other factors.

Phenotypes

Definitions of underlying conditions were derived from Health Data Research UK—Clinical disease research using LIInked Bespoke studies and Electronic health Records (CALIBER), a comprehensive platform with validated definitions of underlying conditions.²⁴ Phenotyping was performed in primary care (General Practice Extraction Service [GPES] Data for Pandemic Planning and Research [GDPPR]) using Systematized Nomenclature of Medicine—Clinical Terms (SNOMED CT) concepts and in secondary care (Hospital Episode Statistics Admitted Patient Care) using *International Classification of Diseases, Tenth Revision (ICD-10)*, codes. For CKD phenotyping (including CKD stages, dialysis, and transplant), we extracted SNOMED CT concepts systematically using off-line NHS Digital SNOMED CT Browser (Supplementary Table S1). CVD was defined as a composite of stroke (nonspecified, ischemic, hemorrhagic, transient ischemic attack, or subarachnoid hemorrhagic), heart failure, arrhythmias, acute myocardial infarction, cardiomyopathy, atrial fibrillation, deep vein thrombosis, isolated calf vein thrombosis, and pulmonary embolism.²⁵ Obesity was defined as body mass index > 40 kg/m². Diabetes included all types of diabetes. Implementation of phenotypes is publicly available (https://github.com/BHFDSC/CCU003_03/tree/main/phenotypes).

Statistical analysis

Underlying conditions. We estimated prevalence of underlying conditions in prevalent and incident CKD, stratifying by age, gender, CKD stage, or dialysis/transplantation. We compared prevalence of underlying conditions in infected versus noninfected for (i) all CKD patients and (ii) nonsurvival group, using odds ratio (Wald method) and Mantel-Haenszel χ^2 test with 95% confidence intervals.

Mortality risk. With SARS-CoV-2 infection as exposure and 1-year all-cause mortality as outcome, we estimated adjusted relative risk (RR), stratified by underlying conditions, for both prevalent and incident CKD, using generalized linear model with Poisson distribution (log link) after adjusting for the following: (i) age and (ii) age and other potential cofounders by exact matching based on ≥ 1 vaccination dose, age groups (5-year intervals), and sex, assessing matching quality using distributional plots. To estimate overall effect of having an underlying condition, analyses were repeated with generalized linear model for each condition, reporting respective RRs (with “SARS-CoV-2 positive” as another potential cofounder in exact matching).

Incidence of SARS-CoV-2 infection. We estimated crude incidence rate of SARS-CoV-2 infection per 10,000 person-week, stratified by underlying conditions for incident and prevalent CKD.

Predicting and validating pandemic-related excess deaths. By Kaplan-Meier analyses, we estimated prepandemic baseline risk of 1-year all-cause mortality for prevalent CKD in NHSD TRE (2019) and CPRD cohorts (2014). We validated our recent model^{14,15} (to predict COVID-19-related excess death) using

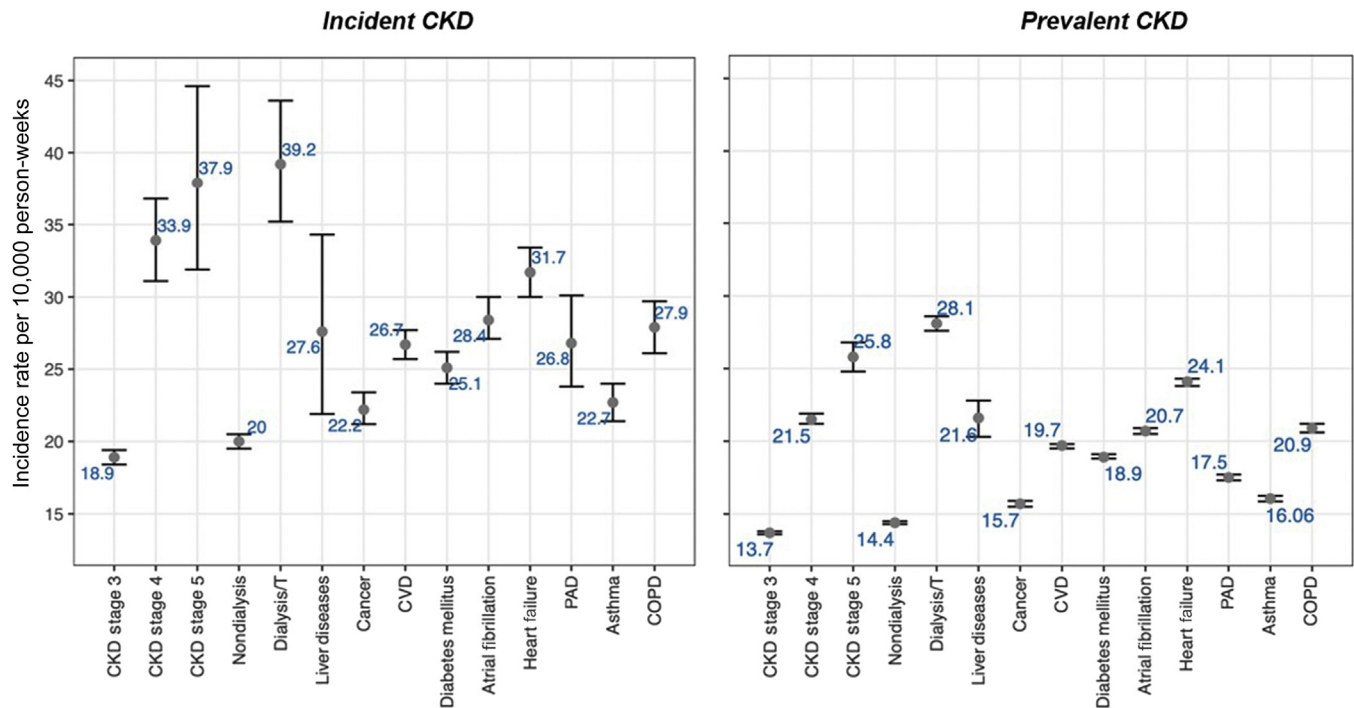


Figure 1 | Incidence rate of severe acute respiratory syndrome coronavirus 2 (SARS-CoV-2) infection by underlying conditions and stages of chronic kidney disease (CKD) in 1 year of coronavirus disease 2019 (COVID-19) pandemic for prevalent ($n = 1,934,585$) and incident ($n = 144,969$) CKD, after controlling for COVID-19 first-dose vaccination. COPD, chronic obstructive pulmonary disease; CVD, cardiovascular disease; Dialysis/T, dialysis/transplantation; PAD, peripheral arterial disease.

our risk estimates and applying 1-year population IR of 10%, and overall RR of mortality (set at 3) based on previous reports.^{15,26} We predicted total excess deaths by: (i) age groups and number of underlying conditions and (ii) underlying conditions, using assumed and observed IR and RR. The analysis was performed according to a prespecified analysis plan published on GitHub (https://github.com/BHFDSC/CCU003_01), including implementations and phenotypes.

Role of the funding source

The funders of the study had no role in study design, data collection, data analysis, data interpretation, or writing of the report. AD, MAM, and AB had full access to all the data in the study; and AB had final responsibility for the decision to submit for publication.

RESULTS

Overall population characteristics

We included 1,934,585 individuals with prevalent CKD (mean age, 77.4 ± 12 years; 58.0% female; 12.7% CKD stage >3 ; 4.4% dialysis/transplantation) and 144,169 with incident CKD (mean age, 73.9 ± 12.8 years; 51.9% female; 9.2% CKD stage >3 ; 2.4% dialysis/transplantation; [Supplementary Figure S1](#) and [Supplementary Tables S2 and S3](#)). Among those with prevalent and incident CKD, 91.5% and 86.6%, respectively, were aged >60 years, and 48.0% and 36.1%, respectively, were aged >80 years. In the first year of the pandemic, in those with prevalent and incident CKD, 6.7% and 7.8% were infected, 1.8% and 1.7% had died from COVID-19, and 8.9% and 7.0% had died from all causes, respectively.

Underlying conditions

Comorbidities were more common in prevalent than incident CKD, and in males, in older individuals, and at CKD stages 4 and 5, especially CVD (prevalent CKD vs. incident CKD, 42.5% vs. 39.6%) and diabetes (prevalent CKD vs. incident CKD, 30.5% vs. 28.8%; [Supplementary Figures S2–S5](#)). Looking at comorbidity pairs, the most common combinations were 2 CVD subtypes (e.g., 20.5% for atrial fibrillation and CVD), diabetes with CVD (15.3%), and cancer with CVD (11.6%) in prevalent CKD ([Supplementary Figure S2](#)). A total of 73.5% and 13.2% of individuals with prevalent CKD and 71.2% and 11.2% of those with incident CKD had ≥ 1 and ≥ 3 underlying conditions, respectively ([Supplementary Tables S2 and S3](#)). SARS-CoV-2 infection rates were higher in incident than prevalent CKD (e.g., 39.2 vs. 28.1 per 10,000 person-weeks for chronic liver disease, 37.9 vs. 25.8 for stage 5 CKD, 31.7 vs. 24.1 for heart failure; [Figure 1](#)). Comorbidities were associated with infection, compared with noninfected individuals, particularly for dialysis/transplantation (odds ratio [OR], 2.08; 95% confidence interval [CI], 2.04–2.13) and heart failure (OR, 1.73; 95% CI, 1.71–1.76), but not for cancer (OR, 1.01; 95% CI, 1.01–1.04). Across all comorbidities, association with infection was reduced in the nonsurviving group. Cancer (OR, 0.80; 95% CI, 0.78–0.82), atrial fibrillation (OR, 0.90; 95% CI, 0.87–0.92), and chronic liver disease (OR, 0.83; 95% CI, 0.74–0.93) were less likely in infected people with prevalent CKD who did not survive, compared with noninfected

Table 1 | Association between SARS-CoV-2 infection and 1-year mortality by underlying condition for prevalent (n = 1,934,585) and incident (n = 144,969) chronic kidney disease

Method	Underlying conditions									
	COPD	Asthma	PAD	Heart failure	Atrial fibrillation	Diabetes mellitus	CVD	Cancer	Dialysis/transplantation	Chronic liver disease
Prevalent										
AS	2.63 (2.57–2.69)	3.01 (2.93–3.09)	2.67 (2.57–2.77)	2.25 (2.21–2.30)	2.35 (2.31–2.40)	3.11 (3.06–3.17)	2.59 (2.56–2.63)	2.70 (2.64–2.75)	2.41 (2.30–2.52)	2.09 (1.88–2.31)
M	1.15 (1.13–1.17)	1.27 (1.24–1.30)	1.16 (1.12–1.19)	1.14 (1.12–1.16)	1.12 (1.10–1.13)	1.32 (1.30–1.33)	1.19 (1.17–1.20)	1.13 (1.11–1.15)	1.18 (1.13–1.22)	1.07 (0.99–1.17)
Incident										
AS	3.04 (2.77–3.34)	3.58 (3.21–3.97)	3.63 (3.05–4.29)	2.69 (2.48–2.91)	2.98 (2.76–3.21)	3.66 (3.40–3.93)	3.08 (2.91–3.26)	3.04 (2.80–3.31)	1.54 (1.23–1.90)	1.26 (0.87–1.76)
M	1.13 (1.04–1.21)	1.31 (1.21–1.42)	1.25 (1.10–1.42)	1.14 (1.07–1.21)	1.15 (1.09–1.22)	1.38 (1.30–1.45)	1.20 (1.15–1.23)	1.15 (1.07–1.22)	0.90 (0.75–1.07)	0.85 (0.62–1.15)

AS, adjusting for age and sex; COPD, chronic obstructive pulmonary disease; CVD, cardiovascular disease; M, adjusting for age, sex, and vaccination using exact matching; PAD, peripheral arterial disease; SARS-CoV-2, severe acute respiratory syndrome coronavirus 2.
Data are given as relative risk (95% confidence interval).

people. In nonsurvivors, only diabetes, dialysis/transplantation, and asthma were more common in infected than noninfected cases in both prevalent and incident CKD (Supplementary Figure S5 and Supplementary Table S4).

Mortality risk

One-year all-cause mortality varied by age, sex, multimorbidity, and CKD stage (e.g., 0.2% in those aged ≤ 50 years, with no comorbidities, and with stage 3 CKD; 29.9% in those aged > 80 years, with ≥ 3 comorbidities, and with stage 5 CKD; Supplementary Figure S6). The RR of 1-year all-cause mortality associated with SARS-CoV-2 infection was comparable between incident and prevalent cases of CKD, and highest for those on dialysis/transplantation (prevalent CKD: RR, 1.70; 95% CI, 1.67–1.73; incident CKD: RR, 1.50; 95% CI, 1.37–1.63), or having chronic liver disease (prevalent CKD: RR, 1.61; 95% CI, 1.55–1.66; incident CKD: RR, 1.85; 95% CI, 1.65–2.06), after adjusting for age, sex, COVID-19 vaccination, and positive COVID-19 test result (Table 1) with appropriate matching (Supplementary Figure S7). The RR of 1-year all-cause mortality was highest for diabetes (prevalent CKD: RR, 1.32; 95% CI, 1.30–1.33; incident CKD: RR, 1.38; 95% CI, 1.30–1.45) and asthma (prevalent CKD: RR, 1.27; 95% CI, 1.24–1.30; incident CKD: RR, 1.31; 95% CI, 1.21–1.42), after adjusting for age, sex, and first-dose vaccination (Supplementary Table S5). The incidence risk of mortality was significantly lower in vaccinated CKD than nonvaccinated (Supplementary Table S6) after exact matching and adjusting based on age, sex, and being tested positive for SARS-CoV-2 infection. Vaccine efficacy seemed to be highest in CKD patients with dialysis or asthma comparing with other underlying conditions.

Incidence of SARS-CoV-2 infection

The incidence of infection was higher in incident CKD (20.5 [95% CI, 20–21] per 10,000 person weeks) than prevalent CKD (15.0 [95% CI, 14.9–15.1] per 10,000 person weeks), across all underlying conditions and CKD stages, even after accounting for vaccination (Figure 1 and Supplementary Table S7). Incidence of infection was highest in individuals with dialysis/transplantation (prevalent CKD: 28.1 [95% CI, 27.6–28.6]; incident CKD: 39.2 [95% CI, 35.2–43.6] per 10,000 person weeks) and lowest in those with cancer (prevalent CKD: 15.7 [95% CI, 15.5–15.9]; incident CKD: 22.2 [95% CI, 21.2–23.4] per 10,000 person weeks).

Predicting excess death

Observed IR (6.7%) and observed RR (3.7) were used in our prediction model (Supplementary Figure S8) with the NHSD TRE (January 1, 2019: n = 1,727,130; mean age, 77.0 \pm 12.0 years; 58.4% female) and CPRD (April 6, 2014: n = 174,648; mean age, 77.0 \pm 11.9 years; 61.2% female) cohorts of individuals with prevalent chronic kidney disease (Supplementary Table S8). Prepandemic 1-year all-cause mortality in the CPRD cohort (Supplementary Figure S9)

Table 2 | Estimated 1-year excess deaths by population infection rate and relative impact of the pandemic using *Lancet* 2020 model¹⁵ and prevalent CKD patients in 2 independent population-based cohorts (NHSD TRE and CPRD)

Data used in <i>Lancet</i> 2020 model (date of analysis of prevalent CKD)	RR of mortality associated with the pandemic	Population infection rate, %					
		Assumed			Observed ^a		
		10	40	80	6.7		
NHSD TRE (January 1, 2019)	Assumed	1.5	14,373 (41.9)	57,492 (167.8)	114,984 (335.6)	9630 (28.1)	
		2	19,164 (55.9)	76,656 (223.7)	153,312 (447.4)	12,840 (37.5)	
		3	28,746 (83.9)	114,984 (335.6)	229,968 (671.1)	19,260 (56.2)	
CPRD (April 6, 2014)	Observed ^a	3.7	35,453 (103.5)	141,812 (413.9)	283,624 (827.7)	23,754 (69.3)	
		Assumed	1.5	12,273 (35.8)	49,092 (143.3)	98,184 (286.5)	8223 (24)
			2	16,364 (47.8)	65,456 (191)	130,912 (382.1)	10,964 (32)
Observed ^a	3	24,546 (71.6)	98,184 (286.5)	196,368 (573.1)	16,446 (48)		
	3.7	20,283 (59.2)	20,283 (59.2)	20,283 (59.2)	20,283 (59.2)		

CKD, chronic kidney disease; CPRD, Clinical Practice Research Datalink; NHSD TRE, NHS Digital Trusted Research Environment for England; RR, relative risk.

^aObserved parameters in NHSD TRE data.

The values in parentheses show percentages of observed excess deaths (i.e., 34,265). Bold data denote model using RR = 3.0 and population infection rate = 10%. Bold and italics data denote RR = 3.7 and population infection rate = 6.7%.

was comparable to the NHSD TRE cohort, by number of underlying conditions, age, sex, and CKD stage.

Using NHSD TRE and CPRD data, our model predicted 28,746 (83.9%) and 24,546 (71.6%) deaths, respectively, with IR of 10% and RR of 3.0, and 23,754 (69.3%) and 20,283 (59.2%) deaths, respectively, with IR of 6.7% and RR of 3.7, compared with 34,265 observed excess deaths (Table 2). For NHSD TRE data, the prediction of COVID-19 deaths was significantly improved using IR of 10% and RR of 3.0, compared with IR of 6.7% and RR of 3.7 (e.g., 90.6% vs. 71.2% for chronic obstructive pulmonary disease, 94.4% vs. 74.2% for heart failure, and 90.3% vs. 71.0% for cancer). The model underpredicted for asthma (77.0% vs. 60.5%) and diabetes (76.0% vs. 59.7%) and overpredicted for dialysis/transplantation (124.3% vs. 97.7%; Table 3). The predicted proportions of COVID-19 deaths by age group were comparable to the observed proportions, for both NHSD TRE and CPRD data (Supplementary Figure S10) (e.g., in individuals aged >80 years, observed 75.0% and predicted 73.8% using NHSD TRE data and 76.6% using CPRD data).

DISCUSSION

In this large, nationally representative cohort study of individuals with CKD, we had 4 findings. First, comorbidities and multimorbidity were common, and associated with SARS-CoV-2 infection and severe COVID-19. Second, 1-year mortality risk was high and dependent on age, underlying condition, stage of CKD, and incidence or prevalence of CKD, ranging from 0.5% to 37.2%. Third, the UK burden of COVID-19 excess deaths in individuals with CKD was >34,000 in 1 year and predictable using a simple, parsimonious model and routine EHRs. Fourth, we showed that vaccination was associated with reduced mortality risk.

Diabetes and CVD are well documented as major risk factors and comorbidities in people with CKD, whether in epidemiologic^{27,28} or therapeutic research.²⁹ We describe, for the first time, distribution of comorbidities and

multimorbidity across the whole spectrum of CKD, both prevalent and incident CKD in up-to-date national data for England. These data are important for planning services for treatment and prevention in individuals with CKD both during and after the pandemic. For example, 7% of individuals with incident or prevalent CKD have both diabetes and cancer; >10% have CVD and cancer. Projections of direct and indirect impact of COVID-19 have not considered overlap between diseases and treatments, probably leading to underestimation. Our finding of higher infection rates in those with dialysis/transplantation may be related to detection bias due to some regular monitoring of those patients for COVID-19 symptoms, resulting in a better detection of SARS-CoV-2 infection. In this context, developing a new condition (such as incident CKD) could potentially increase the contacts with health service that could have resulted in higher detection of infection in incident CKD than prevalent CKD. Despite that, the low rates observed for cancer patients could be related to shielding strategy in clinically vulnerable patients in the United Kingdom. Our results are in line with prior studies¹³ showing higher infection rates in those with CKD. Future research should also address subtypes of CKD and trajectory by comorbidity profile to guide and prioritize preventive clinical and public health interventions.

We provide detailed large-scale, population-based analyses to provide patients, health professionals, and policy makers with understanding of pre-COVID-19 and post-COVID-19 mortality risk in people with CKD, based on age, underlying conditions, and incident versus prevalent diseases. Despite increasing clinical, societal, and scientific interest in precision medicine, CKD has not been comprehensively investigated, whether in terms of etiology, prognosis, or prevention research.^{1,2,28} Such granular, personalized data can inform risk prediction and public health projections to translational research and conversations with patients about individual risk. Moreover, such approaches are needed to help future research in long COVID-19.

Table 3 | Observed and predicted excess deaths (due to COVID-19) by underlying conditions over 1 year of the pandemic in individuals with prevalent chronic kidney disease (n = 1,934,585)

COVID-19 deaths	COPD	Asthma	Heart failure	Atrial fibrillation	Diabetes mellitus	CVD	Cancer	Dialysis/transplantation	Total excess death (% predicted/observed)
Observed	7890	6822	11,394	12,166	14,617	22,839	9979	2043	34,265 (100.0)
Predicted, using assumed IR of 10%/RR of 3.0 (% predicted/observed)	7152 (90.6)	5251 (77)	10,758 (94.4)	11,706 (96.2)	11,114 (76.0)	20,014 (87.6)	9011 (90.3)	2539 (124.3)	28,746 (83.9)
Predicted, using observed IR of 6.7%/RR of 3.7 (% predicted/observed)	5621 (71.2)	4126 (60.5)	8453 (74.2)	9199 (75.6)	8732 (59.7)	15,726 (68.9)	7081 (71.0)	1997 (97.7)	23,754 (69.3)

COVID-19 deaths	Underlying conditions, n	Aged ≤50 yr	Aged 50–60 yr	Aged 60–70 yr	Aged 70–80 yr	Aged >80 yr	Total excess death (% predicted/observed)
Predicted, using assumed IR of 10%/RR of 3.0 (% total predicted)		202 (0.7)	516 (1.8)	1506 (5.2)	5314 (18.5)	21,208 (73.8)	28,746 (83.9)
	0	35 (0.1)	66 (0.2)	130 (0.5)	432 (1.5)	2252 (7.8)	2915 (8.5)
	1	66 (0.2)	132 (0.5)	356 (1.2)	1332 (4.6)	6884 (23.9)	8770 (25.6)
	2	67 (0.2)	178 (0.6)	546 (1.9)	1827 (6.4)	6992 (24.3)	9610 (28.0)
	≥3	34 (0.1)	140 (0.5)	474 (1.6)	1723 (6.0)	5080 (17.7)	7451 (21.7)
Observed (% total observed)		133 (0.4)	543 (1.6)	1786 (5.2)	6109 (17.8)	25,694 (75.0)	34,265 (100.0)
	0	26 (0.1)	64 (0.2)	153 (0.4)	577 (1.7)	2982 (8.7)	3802 (11.1)
	1	43 (0.1)	184 (0.5)	458 (1.3)	1600 (4.7)	8205 (23.9)	10,490 (30.6)
	2	45 (0.1)	176 (0.5)	653 (1.9)	1940 (5.7)	8326 (24.3)	11,140 (32.5)
	≥3	19 (0.1)	119 (0.3)	522 (1.5)	1992 (5.8)	6181 (18.0)	8833 (25.8)

COPD, chronic obstructive pulmonary disease; COVID-19, coronavirus disease 2019; CVD, cardiovascular disease; IR, infection rate; RR, relative risk (of COVID-19 pandemic compared with baseline).

Assumed IR/RR is based on *Lancet* 2020 model (Banerjee *et al.*¹⁵). Observed IR/RR was observed during pandemic in individuals with chronic kidney disease.

Excess deaths have been the main metric to measure direct and indirect COVID-19 impact, whether overall or in individuals with particular diseases.^{14,15} We present the first analyses in individuals with CKD. These are projections over 1 year based on a published model¹⁵ and consistent with current estimates of the UK's COVID-19 deaths.^{26,27,30,31} The variations in pre-COVID-19 and post-COVID-19 mortality based on age, and underlying conditions, are consistent with observed variation in mortality rates during the pandemic.^{27,32} The greater prediction accuracy of our model using assumed IR and RR values (10% and 3%, respectively), compared with observed values (6.7% and 3.7%, respectively) is likely to reflect underestimation of infection rate, even in near-complete national data. Further validation of our prediction model is required across different diseases, patterns of multimorbidity, and countries. Our approach highlights the *feasibility* of large-scale use of EHRs for pandemic preparedness, even less contemporary, less complete data (e.g., CPRD from 2014), and *validity* of our estimates of infection and excess deaths. For example, our infection rate estimates in nondialysis patients with prevalent CKD (14.4 [95% CI, 14.3–14.5] per 10,000 person weeks) were comparable with a recent meta-analysis (16 [95% CI, 4–33] per 10,000 person weeks³³).

Strengths and limitations

This is the largest study to date of individuals with CKD in national EHRs to consider a wide range of comorbidities and COVID-19 mortality, but it has several limitations. Laboratory testing was not available, and phenotyping was based on SNOMED CT concepts with potential underestimation. We used validated CALIBER phenotypes²⁵ and methods,³⁴ but biases are possible.³⁵ We only investigated impact of underlying conditions, or effect of SARS-CoV-2 infection by individual comorbidities. Further studies should investigate comorbidity clusters and progression of CKD and outcomes. We were unable to study detailed ethnic categories because of data quality in EHRs. Our model rests on baseline risks. Underestimation or overestimation of excess deaths is possible for some underlying conditions being differentially affected by specific health policies (e.g., shielding) or by indirect effects of the pandemic (e.g., canceled procedures).

Implications for research and policy

There are 3 policy implications. First, our findings are consistent with a “syndemic,” describing convergence of an infectious disease, undertreated noncommunicable diseases, and social determinants of health,³⁶ requiring multidisciplinary, rather than traditional, disease- and specialty-specific

responses. Second, given high comorbidity burden, particularly CVD and cancer, it is important to mitigate against indirect effects, likely to disproportionately affect people with CKD.¹⁴ Third, routine data can provide patients, public, professionals, and policy makers with tailored risk information because mortality is highly variable based on age, sex, multimorbidity, and disease stage, which can inform prepandemic and pandemic management, such as social isolation policies and vaccination prioritization in individuals with CKD.

There are 3 research implications. First, clustering approaches may inform and clarify subtype classification, trajectories, and risk prediction in CKD. Second, possible mechanisms underlying observed differences in mortality by age, comorbidities, ethnicity, stage of CKD, and other factors need investigation. Third, pathophysiology of CKD as a risk factor and an outcome in COVID-19 warrants further study, informing etiology, prevention, and intervention research.

Conclusions

In conclusion, individuals with CKD have high burden of multimorbidity and high risk of prepandemic mortality across all stages of CKD and in prevalent and incident disease. We showed that the direct burden of pandemic could be predicted using prepandemic, large-scale EHR data. The combined data for multimorbidity, CKD stage, and age could help prioritize patients for vaccination and post-COVID-19 policies, and design of stratified pathways for CKD patients.

DISCLOSURE

DN is director of Informatics Research for the UK Kidney Association and on the steering group for 2 Glaxo-SmithKline-funded studies in sub-Saharan Africa, unrelated to this research. JBM and TM are employed by AstraZeneca UK Ltd, a biopharmaceutical company. DAL has received funding from Wellcome, the European Research Council (ERC Advanced grant and a Horizon 2020 grant), US National Institute of Health, Diabetes UK, Roche Diagnostics, and Medtronic Ltd for research unrelated to that presented herein. KK is director of the University of Leicester Centre for Black Minority Ethnic Health, trustee of the South Asian Health Foundation, and chair of the ethnicity subgroup of the UK Scientific Advisory Group for Emergencies; he has acted as a consultant or speaker or received grants for investigator-initiated studies for AstraZeneca, Novartis, Novo Nordisk, Sanofi-Aventis, Lilly, Merck Sharp & Dohme, Boehringer Ingelheim, Bayer, Berlin-Chemie/Menarini Group, Janssen, and Napp. AB is supported by research funding from the National Institute for Health Research, British Medical Association, AstraZeneca, and UK Research and Innovation; and is trustee of the South Asian Health Foundation. HH is a National Institute for Health Research Senior Investigator. HH is funded by the National Institute for Health Research University College London Hospitals Biomedical Research Centre, Health Data Research UK (grant LOND1, which is funded by the UK Medical Research Council, Engineering and Physical Sciences Research Council, Economic and Social Research Council, Department of Health and Social Care [England], Chief Scientist Office of the Scottish Government Health and Social Care Directorates, Health and Social Care Research and Development Division [Welsh Government], Public Health Agency [Northern Ireland], British Heart Foundation, and Wellcome Trust). AB and HH are part of the BigData@Heart

Consortium, funded by the Innovative Medicines Initiative-2 Joint Undertaking under grant agreement 116074. This Joint Undertaking receives support from the European Union's Horizon 2020 research and innovation program and the European Federation of Pharmaceutical Industries and Associations (EFPIA); it is chaired by D.E. Grobbee and S.D. Anker, partnering with 20 academic and industry partners and the European Society of Cardiology (ESC). All the other authors declared no competing interests.

DATA STATEMENT

The data used in this study are available in NHS Digital's Trusted Research Environment for England (TRE), but as restrictions apply, they are not publicly available (<https://digital.nhs.uk/coronavirus/coronavirus-data-services-updates/trusted-research-environment-service-for-england>). The CVD-COVID-UK/COVID-IMPACT programme led by the British Heart Foundation (BHF) Data Science Centre (<https://www.hdruc.ac.uk/helping-with-health-data/bhf-data-science-centre/>) received approval to access data in NHS Digital's TRE from the Independent Group Advising on the Release of Data (<https://digital.nhs.uk/about-nhs-digital/corporate-information-and-documents/independent-group-advising-on-the-release-of-data>) via an application made in the Data Access Request Service Online system (reference DARS-NIC-381078-Y9C5K; <https://digital.nhs.uk/services/data-access-request-service-dars/dars-products-and-services>). The CVD-COVID-UK/COVID-IMPACT Approvals and Oversight Board (<https://www.hdruc.ac.uk/projects/cvd-covid-uk-project/>) subsequently granted approval to this project to access the data within NHS Digital's TRE for England. The deidentified data used in this study were made available to accredited researchers only. Those wishing to gain access to the data should contact bhfdsc@hdruc.ac.uk in the first instance.

ACKNOWLEDGMENTS

This work is performed with the support of the BHF Data Science Centre led by Health Data Research (HDR) UK (BHF grant SP/19/3/34678). This study makes use of deidentified data held in NHS Digital's Trusted Research Environment for England and made available via the BHF Data Science Centre's CVD-COVID-UK/COVID-IMPACT consortium. This work uses data provided by patients and collected by the NHS as part of their care and support. We would also like to acknowledge all data providers who make health-relevant data available for research. This study was funded by AstraZeneca UK Ltd. The BHF Data Science Centre (grant SP/19/3/34678, awarded to HDR UK) funded co-development (with NHS Digital) of the trusted research environment, provision of linked data sets, data access, user software licences, computational usage, and data management and wrangling support, with additional contributions from the HDR UK Data and Connectivity component of the UK Government Chief Scientific Adviser's National Core Studies program to coordinate national COVID-19 priority research. Consortium partner organizations funded the time of contributing data analysts, biostatisticians, epidemiologists, and clinicians.

Approval for the study was granted by the Independent Scientific Advisory Committee (20_074R) of the Medicines and Healthcare Products Regulatory Agency in the United Kingdom in accordance with the Declaration of Helsinki. The North East-Newcastle and North Tyneside 2 research ethics committee provided ethical approval for the CVD-COVID-UK/COVID-IMPACT research programme (REC 20/NE/0161) to access, within secure trusted research environments, unconsented, whole-population, de-identified data from electronic health records collected as part of patients' routine health care.

AUTHOR CONTRIBUTIONS

AB conceived the research question. AB, JBM, and TM obtained funding. AB and AD designed the study and analysis plan. SD, CS, and the BHF Data Science Centre CVD-COVID-UK/COVID-IMPACT consortium prepared the data, including electronic health record phenotyping in the CALIBER open portal. CS is the Director of the BHF Data Science Centre and coordinated approvals for and access to data within the NHS Digital Trusted Research Environment for England (TRE) for CVD-COVID-UK/COVID-IMPACT. AD prepared the chronic kidney disease (CKD) cohorts (including phenotyping of CKD stages), designed incidence study, and performed statistical analysis. MAM provided all required implementations for adding phenotypes, and vaccination data in TRE, beside insightful comments throughout research. AB and AD drafted the initial and final versions of the manuscript. All authors critically reviewed early and final versions of the manuscript.

SUPPLEMENTARY MATERIAL

[Supplementary File \(Word\)](#)

Figure S1. Study population of prevalent and incident chronic kidney disease in England (NHS Digital Trusted Research Environment for England [NHSD TRE] data for England).

Figure S2. Prevalence and co-occurrence of underlying conditions in individuals with prevalent ($n = 1,934,585$) and incident ($n = 144,969$) chronic kidney disease in national data for England (NHS Digital Trusted Research Environment for England [TRE]: March 1, 2020, to March 1, 2021).

Figure S3. Underlying conditions by age, sex, and chronic kidney disease (CKD) stage in individuals with prevalent ($n = 1,934,585$) and incident ($n = 144,969$) chronic kidney disease in NHS Digital Trusted Research Environment for England (NHSD TRE).

Figure S4. Prevalence of underlying conditions by age group, chronic kidney disease (CKD) stage, and sex, in individuals with prevalent ($n = 1,934,585$) and incident ($n = 144,969$) CKD during the coronavirus disease 2019 (COVID-19) pandemic.

Figure S5. Association between severe acute respiratory syndrome coronavirus 2 (SARS-CoV-2) infection and underlying conditions in individuals with chronic kidney disease (CKD) in (A) all prevalent CKD ($n = 1,934,585$) and (B) the nonsurvival group (i.e., those not surviving to 1-year follow-up during pandemic; $n = 172,789$).

Figure S6. One-year all-cause mortality (percentage) in individuals with prevalent ($n = 1,934,585$) chronic kidney disease (CKD) by number of underlying conditions, age, sex, and CKD stage, using NHS Digital Trusted Research Environment for England (NHSD TRE) data on March 1, 2020.

Figure S7. Covariate balance before and after exact matching for prevalent ($n = 1,934,585$) and incident ($n = 144,969$) chronic kidney disease, using standardized mean difference in all individuals and those with cancer, diabetes, and dialysis/transplantation.

Figure S8. Observed age-specific, unadjusted relative risk of mortality and population infection rate during first year of coronavirus disease 2019 (COVID-19) pandemic in individuals with prevalent chronic kidney disease ($n = 1,934,585$).

Figure S9. Prepandemic 1-year all-cause mortality (percentage) in individuals with prevalent ($n = 174,648$) chronic kidney disease (CKD) by number of underlying conditions, age, sex, and CKD stage, using Clinical Practice Research Datalink (CPRD) data on April 6, 2014.

Figure S10. Proportion of excess coronavirus disease 2019 (COVID-19) deaths in individuals with prevalent chronic kidney disease by age group during 1 year of pandemic, predicted by *Lancet* 2020 model¹⁵ (population infection rate, 10%; relative risk, 3) using prepandemic study population in NHS Digital Trusted Research Environment for England (NHSD TRE; predicted $n = 28,746$) and Clinical Practice

Research Datalink (CPRD; predicted $n = 24,546$), compared with actual excess deaths (observed $n = 34,265$).

Table S1. Code list used to identify chronic kidney disease in primary and secondary care, including *International Classification of Diseases, Tenth Revision (ICD-10)*, codes and SNOMED CT concepts.

Table S2. Baseline characteristics in individuals with prevalent chronic kidney disease (CKD; $n = 1,934,585$) at the onset of and during coronavirus disease 2019 (COVID-19) pandemic (from March 1, 2020): age, sex, stages of CKD, underlying conditions, and COVID-19 mortality.

Table S3. Baseline characteristics of incident ($n = 144,969$) chronic kidney disease (CKD) during coronavirus disease 2019 (COVID-19) pandemic (March 1, 2020, to March 1, 2021): age, sex, stages of CKD, underlying conditions, and 28-day COVID-19 mortality.

Table S4. Association between underlying conditions and severe acute respiratory syndrome coronavirus 2 (SARS-CoV-2) infection (compared with noninfected individuals) in individuals with chronic kidney disease (CKD) in (A) all prevalent ($n = 1,934,585$) or incident CKD ($n = 144,969$) and (B) the nonsurvival group (i.e., those not surviving to 1-year follow-up during pandemic; $n = 172,789$).

Table S5. Association between underlying conditions and 1-year all-cause mortality for prevalent ($n = 1,934,585$) and incident ($n = 144,969$) chronic kidney disease.

Table S6. Association between coronavirus disease 2019 (COVID-19) vaccination and 1-year all-cause mortality by underlying condition for prevalent ($n = 1,934,585$) and incident ($n = 144,969$) chronic kidney disease.

Table S7. Incidence rate of severe acute respiratory syndrome coronavirus 2 (SARS-CoV-2) infection per 10,000 person-weeks in prevalent ($n = 1,934,585$) and incident ($n = 144,969$) chronic kidney disease (CKD) over 1 year of the coronavirus disease 2019 (COVID-19) pandemic: (A) crude and (B) adjusted based on first COVID-19 vaccination, underlying conditions, and CKD stage.

Table S8. Baseline characteristics of prepandemic prevalent chronic kidney disease (CKD) in the NHS Digital Trusted Research Environment for England (NHSD TRE; $n = 1,727,130$; January 1, 2019) and Clinical Practice Research Datalink (CPRD; $n = 174,648$; April 1, 2014) by age, sex, stages of CKD, and underlying conditions.

REFERENCES

- Cockwell P, Fisher L-A. The global burden of chronic kidney disease. *Lancet*. 2020;395:662–664.
- Bikbov B, Purcell CA, Levey AS, et al. Global, regional, and national burden of chronic kidney disease, 1990–2017: a systematic analysis for the Global Burden of Disease Study 2017. *Lancet*. 2020;395:709–733.
- Stengel B. Chronic kidney disease and cancer: a troubling connection. *J Nephrol*. 2010;23:253.
- Gansevoort RT, Correa-Rotter R, Hemmelgarn BR, et al. Chronic kidney disease and cardiovascular risk: epidemiology, mechanisms, and prevention. *Lancet*. 2013;382:339–352.
- Henry BM, Lippi G. Chronic kidney disease is associated with severe coronavirus disease 2019 (COVID-19) infection. *Int Urol Nephrol*. 2020;52:1193–1194.
- Extance A. Covid-19 and long term conditions: what if you have cancer, diabetes, or chronic kidney disease? *BMJ*. 2020;368:m1174.
- Saran R, Robinson B, Abbott KC, et al. US renal data system 2017 annual data report: epidemiology of kidney disease in the United States. *Am J Kidney Dis*. 2018;71(suppl 1):A7.
- Yao H, Chen J-H, Xu Y-F. Patients with mental health disorders in the COVID-19 epidemic. *Lancet Psychiatry*. 2020;7:e21.
- Pereira-Sanchez V, Adjukwu F, El Hayek S, et al. COVID-19 effect on mental health: patients and workforce. *Lancet Psychiatry*. 2020;7:e29–e30.
- Anderson RM, Hollingsworth TD, Baggeley RF, et al. COVID-19 spread in the UK: the end of the beginning? *Lancet*. 2020;396:587–590.

11. Mafham MM, Spata E, Goldacre R, et al. COVID-19 pandemic and admission rates for and management of acute coronary syndromes in England. *Lancet*. 2020;396:381–389.
12. Ghaem-Maghani S, Kehoe S, Burton MK. CEU ID: 11123. *Crisis*. 2020;10:12.
13. Reilev M, Kristensen KB, Pottegaard A, et al. Characteristics and predictors of hospitalization and death in the first 9,519 cases with a positive RT-PCR test for SARS-CoV-2 in Denmark: a nationwide cohort. *Int J Epidemiol*. 2020;49:1468–1481.
14. Lai AG, Pasea L, Banerjee A, et al. Estimating excess mortality in people with cancer and multimorbidity in the COVID-19 emergency. *BMJ Open*. 2020;10:e043828.
15. Banerjee A, Pasea L, Harris S, et al. Estimating excess 1-year mortality associated with the COVID-19 pandemic according to underlying conditions and age: a population-based cohort study. *Lancet*. 2020;395:1715–1725.
16. NHS Digital. Shielded Patient List. Updated June 30, 2022. Accessed April 7, 2022. <https://digital.nhs.uk/coronavirus/shielded-patient-list>
17. NHS England. Who is at high risk from coronavirus (COVID-19)? Published March 16, 2020. Reviewed June 23, 2022. Accessed April 7, 2022. <https://www.nhs.uk/conditions/coronavirus-covid-19/people-at-higher-risk/who-is-at-high-risk-from-coronavirus/#:~:text=People%20who%20are%20still%20at,sickle%20cell%20disease>
18. NHS England. Implementing phase 3 of the NHS response to the COVID-19 pandemic. Published online Aug 7, 2020. Updated March 7, 2022. Accessed April 7, 2022. <https://www.england.nhs.uk/publication/implementing-phase-3-of-the-nhs-response-to-the-covid-19-pandemic/>
19. NHS England. Implementing personalised stratified follow-up pathways. Published online March 13, 2020. Updated April 2, 2020. Accessed April 7, 2022. <https://www.england.nhs.uk/publication/implementing-personalised-stratified-follow-up-pathways/>
20. Wood A, Denholm R, Hollings S, et al. Linked electronic health records for research on a nationwide cohort of more than 54 million people in England: data resource. *BMJ*. 2021;373:n826.
21. NHS Digital for England. General Practice Extraction Service (GPES) data for pandemic planning and research: a guide for analysts and users of the data. Update June 8, 2022. Accessed April 7, 2022. <https://digital.nhs.uk/coronavirus/gpes-data-for-pandemic-planning-and-research/guide-for-analysts-and-users-of-the-data>
22. Thygesen JH, Tomlinson C, Hollings S, et al., on behalf of the Longitudinal Health and Wellbeing COVID-19 National Core Study and the CVD-COVID-UK/COVID-IMPACT Consortium. COVID-19 trajectories among 57 million adults in England: a cohort study using electronic health records. *Lancet Digit Health*. 2022;4:e542–e557.
23. David-Neto E, Triboni AHK, Ramos F, et al. Evaluation of MDRD 4, CKD-EPI, BIS-1, and modified Cockcroft–Gault equations to estimate glomerular filtration rate in the elderly renal-transplanted recipients. *Clin Transplant*. 2016;30:1558–1563.
24. Denaxas S, Gonzalez-Izquierdo A, Direk K, et al. UK phenomics platform for developing and validating electronic health record phenotypes: CALIBER. *J Am Med Informatics Assoc*. 2019;26:1545–1559.
25. Banerjee A, Chen S, Pasea L, et al. Excess deaths in people with cardiovascular diseases during the COVID-19 pandemic. *Eur J Prev Cardiol*. 2021;28:1599–1609.
26. Office for National Statistics. Deaths registered weekly in England and Wales, provisional. Accessed June 28, 2022. <https://www.ons.gov.uk/peoplepopulationandcommunity/birthsdeathsandmarriages/deaths/datasets/weeklyprovisionalfiguresondeathsregisteredinenglandandwales>
27. Williamson EJ, Walker AJ, Bhaskaran K, et al. Factors associated with COVID-19-related death using OpenSAFELY. *Nature*. 2020;584:430–436.
28. Knight SR, Ho A, Pius R, et al. Risk stratification of patients admitted to hospital with covid-19 using the ISARIC WHO Clinical Characterisation Protocol: development and validation of the 4C Mortality Score. *BMJ*. 2020;370:m3339.
29. Xie Y, Bowe B, Mokdad AH, et al. Analysis of the Global Burden of Disease study highlights the global, regional, and national trends of chronic kidney disease epidemiology from 1990 to 2016. *Kidney Int*. 2018;94:567–581.
30. Docherty AB, Harrison EM, Green CA, et al. Features of 20 133 UK patients in hospital with covid-19 using the ISARIC WHO Clinical Characterisation Protocol: prospective observational cohort study. *BMJ*. 2020;369:m1985.
31. Ayoubkhani D, Nafilyan V, White C, et al. Ethnic-minority groups in England and Wales—factors associated with the size and timing of elevated COVID-19 mortality: a retrospective cohort study linking census and death records. *Int J Epidemiol*. 2020;49:1951–1962.
32. Bosworth ML, Ayoubkhani D, Nafilyan V, et al. Deaths involving COVID-19 by self-reported disability status during the first two waves of the COVID-19 pandemic in England: a retrospective, population-based cohort study. *Lancet Public Health*. 2021;6:e817–e825.
33. Chung EYM, Palmer SC, Natale P, et al. Incidence and outcomes of COVID-19 in people with CKD: a systematic review and meta-analysis. *Am J Kidney Dis*. 2021;78:804–815.
34. Forbes A, Gallagher H. Chronic kidney disease in adults: assessment and management. *Clin Med (Northfield Il)*. 2020;20:128.
35. Kuan V, Denaxas S, Gonzalez-Izquierdo A, et al. A chronological map of 308 physical and mental health conditions from 4 million individuals in the English National Health Service. *Lancet Digit Heal*. 2019;1:e63–e77.
36. Horton R. Offline: COVID-19 is not a pandemic. *Lancet (London, England)*. 2020;396:874.