

Variable	Levels of covariates	Adjusted Odds Ratio*		
		Estimate	95% LL	95% UL
Sex	Male vs Female	1.27	1.25	1.30
Age (1 year increase)	At Age 66, AKI = 2, Pneumonia, Comorbidity = 0	1.03	1.03	1.04
	At Age 77, AKI = 2, Pneumonia, Comorbidity = 0	1.04	1.04	1.05
	At Age 85, AKI = 2, Pneumonia, Comorbidity = 0	1.05	1.04	1.06
	At Age 66, AKI = 2, Pneumonia, Comorbidity = 4	1.02	1.01	1.02
	At Age 77, AKI = 2, Pneumonia, Comorbidity = 4	1.02	1.02	1.02
	At Age 85, AKI = 2, Pneumonia, Comorbidity = 4	1.02	1.02	1.03
Admission Method	Emergency vs Elective	3.48	3.31	3.66
AKI alert warning level	At Age 66, AKI2 v AKI1	2.00	1.92	2.08
	At Age 66, AKI3 v AKI1	2.09	1.95	2.23
	At Age 66, AKI3 v AKI2	1.05	0.97	1.13
	At Age 77, AKI2 v AKI1	1.96	1.88	2.05
	At Age 77, AKI3 v AKI1	2.12	1.98	2.28
	At Age 77, AKI3 v AKI2	1.08	1.00	1.17
	At Age 85, AKI2 v AKI1	1.99	1.92	2.06
	At Age 85, AKI3 v AKI1	2.38	2.24	2.52
	At Age 85, AKI3 v AKI2	1.20	1.12	1.28
Comorbidity Score (1 unit increase)	At Age 66, Pneumonia	1.29	1.26	1.31
	At Age 77, Pneumonia	1.23	1.21	1.26
	At Age 85, Pneumonia	1.17	1.15	1.19
Month (vs December)	January	1.09	1.05	1.14
	February	1.02	0.98	1.07
	March	0.95	0.91	0.99
	April	0.93	0.89	0.98
	May	0.87	0.83	0.91
	June	0.85	0.81	0.89
	July	0.85	0.81	0.89
	August	0.89	0.85	0.93
	September	0.87	0.83	0.92
	October	0.89	0.84	0.93
	November	0.93	0.88	0.97
Diagnosis Group (vs Pneumonia)	Tuberculosis	0.42	0.16	1.12
	Septicaemia (except in labour), Shock	0.85	0.79	0.93
	Bacterial infection; unspecified site	0.48	0.31	0.75
	Mycoses	0.63	0.31	1.26
	Non-HIV related infections	0.39	0.26	0.59
	Cancer of head and neck	1.04	0.72	1.50
	Cancer of oesophagus	1.42	1.04	1.93
	Cancer of stomach	0.95	0.63	1.41
	Cancer of colon	0.44	0.36	0.54
	Cancer of rectum and anus	0.46	0.35	0.62
	Cancer of liver and intrahepatic bile duct	2.17	1.63	2.89
	Cancer of pancreas	1.24	0.95	1.62
	Cancer of other GI organs; peritoneum	1.23	0.88	1.73
	Cancer of bronchus; lung	1.55	1.24	1.94
	Cancer; other respiratory and intrathoracic	2.71	1.34	5.51

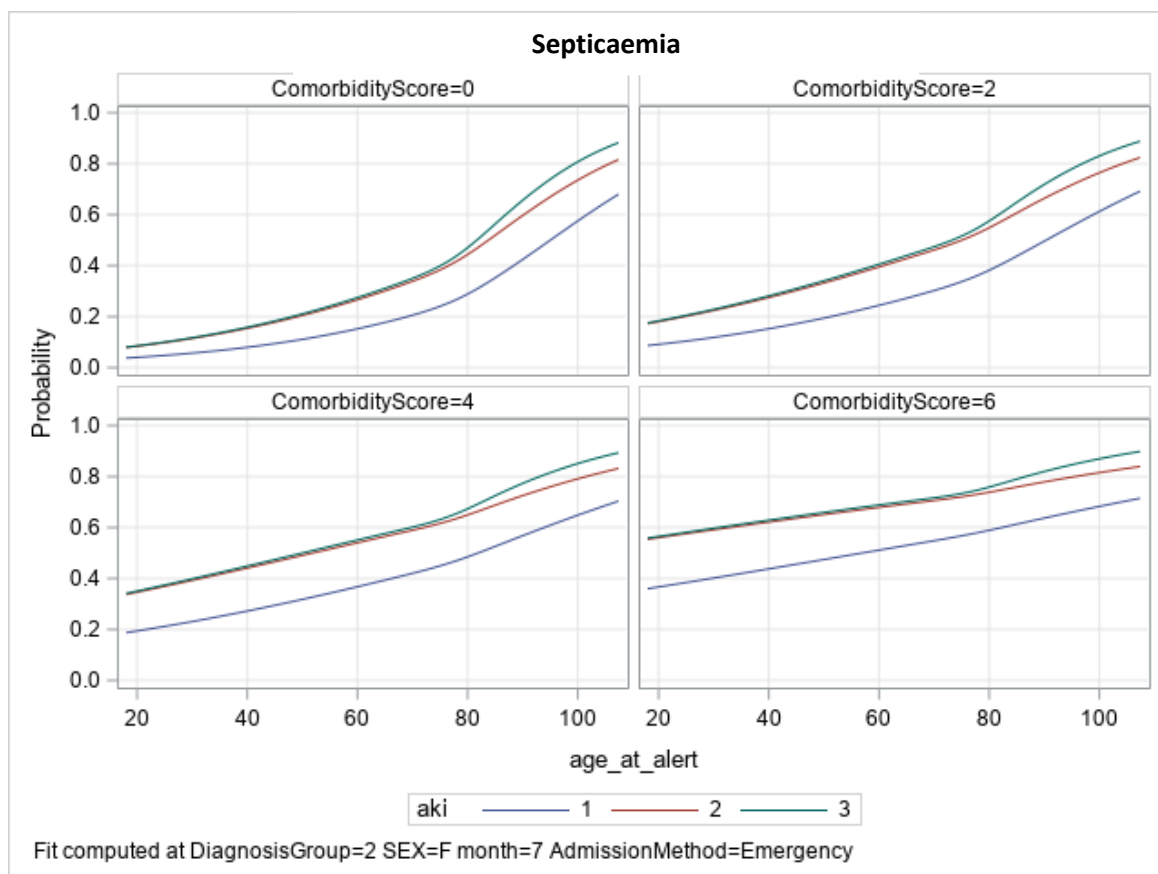
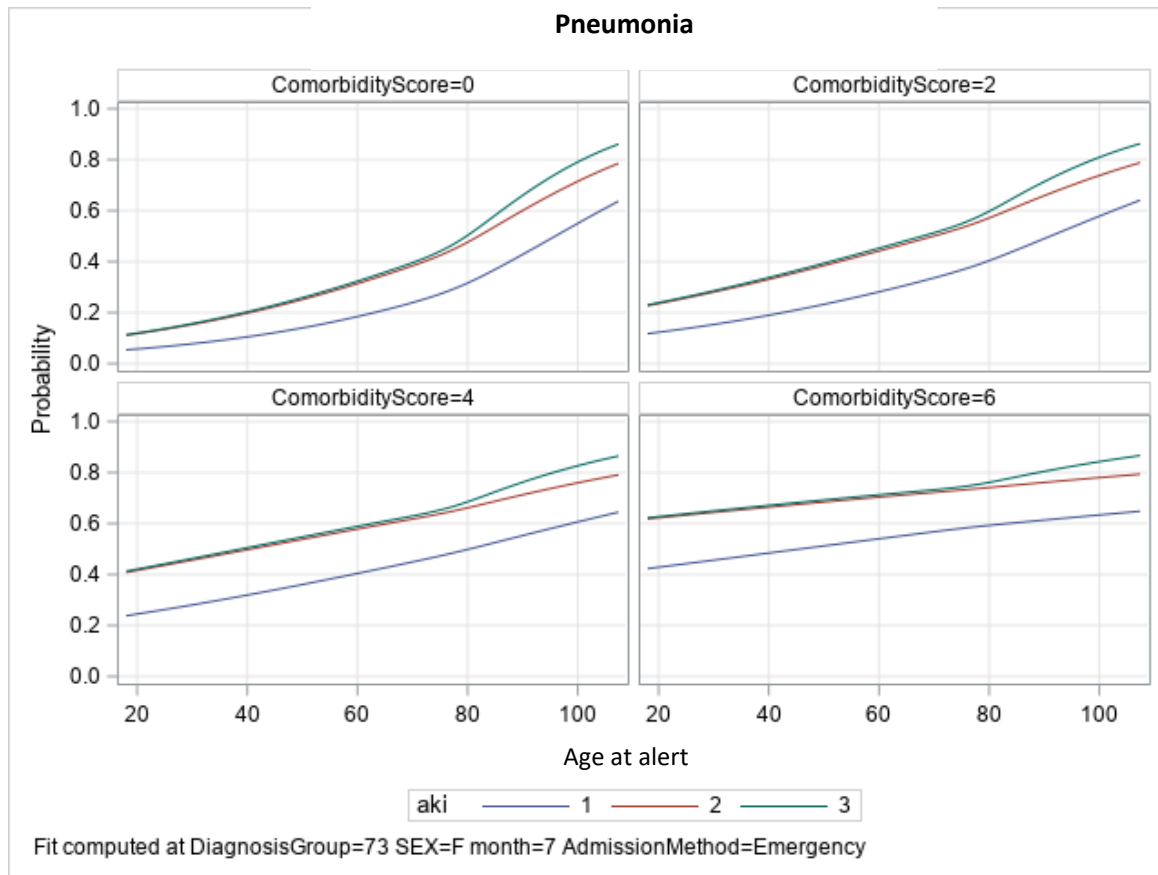
Melanomas, other cancer of skin	2.27	1.02	5.05
Cancer of breast	1.22	0.61	2.46
Cancer of uterus	1.14	0.67	1.95
Cancer of female genital organs	1.21	0.60	2.44
Cancer of ovary	1.40	0.87	2.25
Cancer of male reproductive organs	0.41	0.25	0.65
Cancer of bladder	0.49	0.37	0.65
Cancer of urinary organs	0.11	0.07	0.18
Cancer of brain and nervous system	2.30	1.42	3.74
Hodgkin's disease	5.32	2.26	12.53
Leukemias	1.76	1.46	2.13
Multiple myeloma	1.02	0.77	1.35
Other cancer (primary)	1.20	0.56	2.56
Secondary malignancies	1.69	1.37	2.07
Cancer of bone, thyroid and malignant neoplasm	1.51	1.02	2.23
Neoplasms (unspecified), Nonmalignant breast conditions	0.79	0.56	1.13
Benign neoplasm	0.23	0.14	0.37
Diabetes mellitus without complication	0.47	0.27	0.81
Diabetes mellitus with complications	0.30	0.23	0.39
Thyroid disorders, Other endocrine disorders	0.45	0.34	0.60
Fluid and electrolyte disorders	0.34	0.29	0.40
Nutritional, endocrine and metabolic disorders	0.77	0.59	1.00
Anaemia	0.77	0.62	0.94
Diseases of white blood cells	0.34	0.14	0.83
Hematologic conditions	0.72	0.41	1.25
Organic mental disorders	0.59	0.49	0.70
Non-organic mental disorders, anxiety	0.24	0.16	0.36
Other psychoses	0.35	0.23	0.52
Psychotic disorders, other mental conditions	0.25	0.07	0.83
Central nervous system infections	0.52	0.39	0.71
Parkinson's disease	0.83	0.53	1.32
Hereditary & degenerative nervous system conditions	0.75	0.52	1.09
Paralysis, Late effects of cerebrovascular disease	0.27	0.12	0.57
Epilepsy; convulsions	0.25	0.18	0.36
Coma; stupor; and brain damage	4.61	2.52	8.42
Ear and sense organ disorders (excluding TB/STD)	0.13	0.08	0.21
Other nervous system disorders	0.39	0.30	0.51
Heart valve disorders	0.23	0.18	0.29
Peri / endo / myocarditis, cardiomyopathy	0.22	0.16	0.31
Hypertension	0.66	0.41	1.07
Acute myocardial infarction	0.26	0.23	0.30
Coronary atherosclerosis and other heart disease	0.18	0.15	0.22
Nonspecific chest pain	0.13	0.08	0.21
Pulmonary heart disease	0.66	0.52	0.83
Other and ill-defined heart disease	0.20	0.08	0.49

Conduction disorders	0.17	0.11	0.25
Cardiac dysrhythmias	0.25	0.20	0.30
Cardiac arrest and ventricular fibrillation	1.23	0.91	1.66
Congestive heart failure; nonhypertensive	0.57	0.52	0.62
Acute cerebrovascular disease	0.59	0.53	0.65
Other cerebrovascular disease	0.29	0.18	0.47
Peripheral and visceral atherosclerosis	0.71	0.59	0.85
Aortic; peripheral; and visceral artery aneurysms	0.29	0.23	0.38
Aortic & peripheral arterial embolism or thrombosis	0.38	0.26	0.58
Other circulatory disease	0.50	0.38	0.65
Disease of veins and lymphatics	0.54	0.37	0.76
Acute bronchitis	0.52	0.44	0.62
COPD & bronchiectasis	0.70	0.63	0.79
Asthma	0.27	0.17	0.42
Aspiration pneumonitis; food/vomitus	1.87	1.57	2.23
Pleurisy; pneumothorax; pulmonary collapse	0.84	0.69	1.03
Respiratory failure; insufficiency; arrest (adult)	1.14	0.89	1.47
Lung disease due to external agents	1.48	0.74	2.99
Cystic fibrosis, Other lower respiratory disease	1.67	1.31	2.13
Upper respiratory disease, Diseases of mouth (non dental)	0.40	0.32	0.49
Intestinal infection	0.52	0.43	0.61
Esophageal disorders	0.62	0.44	0.89
Gastroduodenal ulcer (except hemorrhage)	0.73	0.47	1.14
Disorders of stomach and duodenum	0.50	0.34	0.76
Abdominal hernia	0.25	0.19	0.33
Regional enteritis and ulcerative colitis	0.45	0.30	0.68
Intestinal obstruction without hernia	0.37	0.32	0.44
Digestive, anal and rectal conditions	0.35	0.28	0.44
Appendiceal conditions, Peritonitis & intestinal abscess	0.22	0.15	0.31
Biliary tract disease	0.19	0.17	0.23
Liver disease; alcohol-related	3.38	2.52	4.54
Other liver diseases	1.19	0.97	1.47
Pancreatic disorders (not diabetes)	0.54	0.44	0.65
Gastrointestinal hemorrhage	0.69	0.59	0.81
Noninfectious gastroenteritis	0.62	0.39	0.98
Other gastrointestinal disorders	0.61	0.51	0.74
Acute and unspecified renal failure	0.54	0.46	0.63
Nephritis; nephrosis; renal sclerosis, Chronic renal failure	0.23	0.16	0.34
Urinary tract infections	0.32	0.28	0.36
Diseases of kidneys and ureters, bladder and urethra	0.12	0.09	0.17
Genitourinary symptoms and ill-defined conditions	0.07	0.04	0.12
Male genital disorders	0.08	0.04	0.16
Female genital/reproductive disorders	0.27	0.14	0.52
Skin and subcutaneous tissue infections	0.29	0.25	0.34

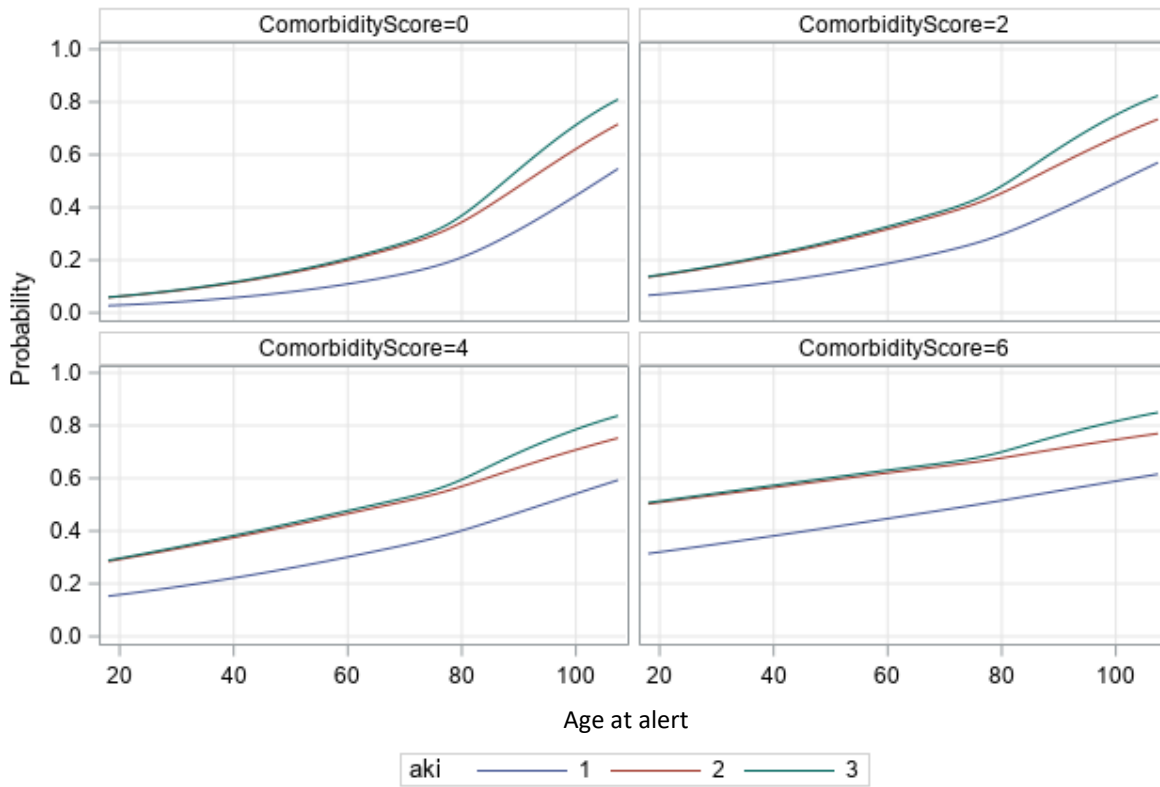
Skin disorders	0.54	0.43	0.67
Infective arthritis and osteomyelitis (excluding TB/STD)	0.19	0.14	0.27
Other non-traumatic joint disorders	0.24	0.18	0.32
Back problems, osteoporosis	0.31	0.24	0.39
Pathological fracture	0.33	0.23	0.48
Other connective tissue disease	0.26	0.22	0.32
Rheumatoid arthritis related diseases, acquired deformities, bone disease	0.11	0.09	0.15
Cardiac & circulatory congenital anomalies	0.06	0.00	10.27
Congenital anomalies	0.35	0.11	1.14
Fracture of neck of femur (hip)	0.19	0.17	0.22
Fracture of upper limb	0.25	0.19	0.33
Fracture of lower limb	0.18	0.14	0.23
Joint disorders, fractures & sprains	0.29	0.25	0.35
Intracranial injury	0.51	0.42	0.62
Crushing injury or internal injury	0.28	0.19	0.41
Open wounds of head; neck; and trunk	0.44	0.31	0.64
Open wounds of extremities	0.39	0.24	0.65
Complication of device; implant; or graft	0.18	0.14	0.22
Complication of surgical procedures or medical care	0.19	0.15	0.24
Superficial injury; contusion	0.38	0.30	0.47
Burns	0.60	0.29	1.25
Poisoning	0.21	0.13	0.32
Other injuries & conditions due to external causes	0.41	0.27	0.64
Syncope	0.27	0.17	0.43
Fever of unknown origin	0.52	0.26	1.03
Lymphadenitis, Gangrene	1.09	0.41	2.91
Nausea and vomiting	0.46	0.27	0.80
Abdominal pain	0.44	0.31	0.64
Malaise and fatigue	0.46	0.22	0.99
Allergic reactions, aftercare & screening, R codes	0.72	0.62	0.83
Non-Hodgkin's lymphoma	1.56	1.29	1.88

*Due to interactions in the model, ORs must be presented at a certain level of other variables.
Diagnosis Group OR presented for Age = 77 and Comorbidity score = 0*

Predicted probability plots for the four largest diagnosis groups, for Females with Emergency Admission in July

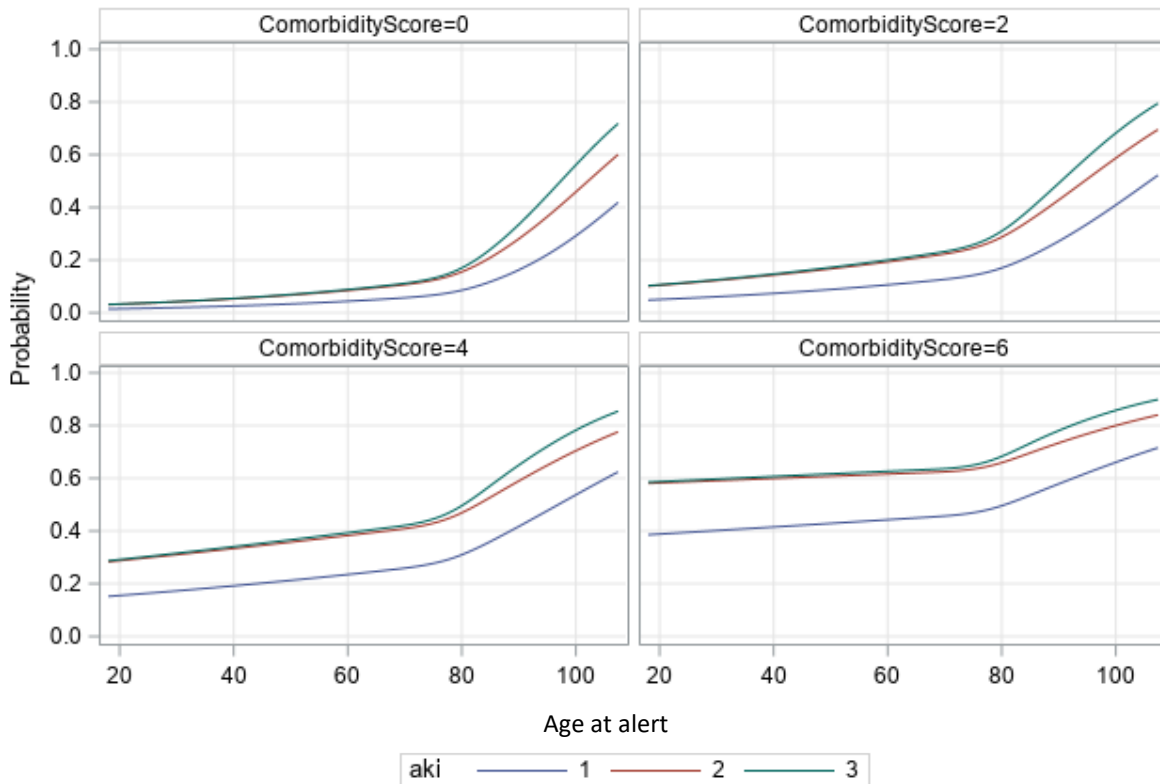


Congestive Heart Failure



Fit computed at DiagnosisGroup=65 SEX=F month=7 AdmissionMethod=Emergency

Fracture Neck of Femur



Fit computed at DiagnosisGroup=120 SEX=F month=7 AdmissionMethod=Emergency