

# Predictors of Survival After Head and Neck Squamous Cell Carcinoma in South America: The InterCHANGE Study

Renata Abrahão, MD, MSc, PhD<sup>1,2</sup>; Sandra Perdomo, PhD<sup>1,3,4</sup>; Luis Felipe Ribeiro Pinto, PhD<sup>5</sup>; Flávia Nascimento de Carvalho, MSc<sup>5</sup>; Fernando Luis Dias, MD, PhD<sup>5</sup>; José Roberto V. de Podestá, MD<sup>6</sup>; Sandra Ventorin von Zeidler, PhD<sup>7</sup>; Priscila Marinho de Abreu, PharmD, MSc<sup>7</sup>; Marta Vilensky, BSc<sup>8</sup>; Raul Eduardo Giglio, MD<sup>9</sup>; José Carlos Oliveira, PhD<sup>9</sup>; Matinair Siqueira Mineiro, RN<sup>9</sup>; Luiz P. Kowalski, MD, PhD<sup>10</sup>; Mauro K. Ikeda, PhD<sup>10</sup>; Mauricio Cuello, MD<sup>11</sup>; Andres Munyo, MD<sup>11</sup>; Paula A. Rodríguez-Urrego, MD<sup>4</sup>; José Antonio Hakim, MD<sup>4</sup>; David Alfonso Suarez-Zamora, MD<sup>4</sup>; Federico Cayol, MD<sup>12</sup>; Marcelo Fernando Figari, MD<sup>12</sup>; Javier Oliver, PhD<sup>12</sup>; Valerie Gaborieau, DUT<sup>1</sup>; Ruth H. Keogh, DPhil<sup>13</sup>; Paul Brennan, PhD<sup>1</sup>; and Maria Paula Curado, PhD, MD<sup>10</sup> on behalf of the InterCHANGE Group

## abstract

**PURPOSE** Head and neck squamous cell carcinoma (HNSCC) incidence is high in South America, where recent data on survival are sparse. We investigated the main predictors of HNSCC survival in Brazil, Argentina, Uruguay, and Colombia.

**METHODS** Sociodemographic and lifestyle information was obtained from standardized interviews, and clinicopathologic data were extracted from medical records and pathologic reports. The Kaplan-Meier method and Cox regression were used for statistical analyses.

**RESULTS** Of 1,463 patients, 378 had a larynx cancer (LC), 78 hypopharynx cancer (HC), 599 oral cavity cancer (OC), and 408 oropharynx cancer (OPC). Most patients (55.5%) were diagnosed with stage IV disease, ranging from 47.6% for LC to 70.8% for OPC. Three-year survival rates were 56.0% for LC, 54.7% for OC, 48.0% for OPC, and 37.8% for HC. In multivariable models, patients with stage IV disease had approximately 7.6 (LC/HC), 11.7 (OC), and 3.5 (OPC) times higher mortality than patients with stage I disease. Current and former drinkers with LC or HC had approximately 2 times higher mortality than never-drinkers. In addition, older age at diagnosis was independently associated with worse survival for all sites. In a subset analysis of 198 patients with OPC with available human papillomavirus (HPV) type 16 data, those with HPV-unrelated OPC had a significantly worse 3-year survival compared with those with HPV-related OPC (44.6% v 75.6%, respectively), corresponding to a 3.4 times higher mortality.

**CONCLUSION** Late stage at diagnosis was the strongest predictor of lower HNSCC survival. Early cancer detection and reduction of harmful alcohol use are fundamental to decrease the high burden of HNSCC in South America.

JCO Global Oncol 6:486-499. © 2020 by American Society of Clinical Oncology

Creative Commons Attribution Non-Commercial No Derivatives 4.0 License 

## INTRODUCTION

Head and neck squamous cell carcinoma (HNSCC) incidence is high in South America, with higher rates in Argentina, Brazil, French Guyana, and Uruguay.<sup>1</sup> The main risk factors for HNSCC continue to be smoking and alcohol consumption, 2 potentially modifiable lifestyle factors. However, high-risk human papillomavirus (HPV) infection has become an important risk factor for a subset of HNSCC, mostly in the oropharynx.<sup>2</sup> In the United States, where aggressive tobacco control programs have resulted in reduced tobacco use, a marked decline in the incidence rates of larynx cancer (LC), hypopharynx cancer (HC), and oral cavity cancer (OC) has been observed over the past 3 decades. In the same period, the incidence of

HPV-related oropharynx cancer (OPC) has increased substantially.<sup>3</sup> In South America, the prevalence of HPV-related OPC seems to be much lower than that in the United States (60%) or Europe (31%). The reported prevalence of HPV-related OPC has been reported to be as low as 4% in Sao Paulo, Brazil.<sup>4</sup>

Despite progress in diagnostic procedures and therapeutic management, survival after HNSCC diagnosis remains relatively low in Europe<sup>5,6</sup> and North America,<sup>7</sup> whereas recent survival data are scarce in South America. In this study, we aimed to examine the survival of patients with HNSCC in several South American institutions and investigate the influence of sociodemographic, lifestyle, and clinical factors on survival.

## ASSOCIATED CONTENT

### Appendix

Author affiliations and support information (if applicable) appear at the end of this article.

Accepted on January 22, 2020 and published at [ascopubs.org/journal-go](https://ascopubs.org/journal-go) on March 26, 2020; DOI <https://doi.org/10.1200/GO.20.00014>

## CONTEXT

### Key Objective

What are the main predictors of survival in patients with head neck squamous cell carcinoma (HNSCC) from South America?

### Knowledge Generated

Three-year survival for HNSCC is low in South America, especially for patients with oropharynx and hypopharynx cancer. Late stage at diagnosis is a strong independent predictor of worse survival for all HNSCC sites. Former and current drinkers diagnosed with laryngeal or hypopharyngeal cancers had over two-fold increased hazard of death compared with never drinkers.

### Relevance

Early cancer detection and reduction of harmful alcohol use need to be prioritized to reduce the high burden of HNSCC in South America.

## PATIENTS AND METHODS

### Patients

We used data prospectively collected from the InterCHANGE study, a multicenter case-control study that was initiated to investigate the risk factors for HNSCC onset and outcomes. Patients were followed up to investigate the main predictors of survival after HNSCC. The International Agency for Research on Cancer (IARC; Lyon, France) was responsible for the overall coordination of the study, which included 8 institutions from the following 4 countries: Argentina, Brazil, Colombia, and Uruguay. Data from Argentina were mostly from the Angel Roffo Institute of Oncology (Buenos Aires; public health system), with a few patients from the Italiano Hospital (Buenos Aires; private). Data from Brazil are from the following 4 centers: National Cancer Institute (INCA) in Rio de Janeiro (public), Araujo Jorge Hospital in Goiania (private), A.C. Camargo Cancer Center in Sao Paulo (private), and Santa Rita de Cassia Hospital in Vitoria (private). Uruguay was represented by the Dr Manuel Quintela Hospital in Montevideo (public), whereas data from Colombia were obtained from the Santa Fé de Bogotá University Hospital (Bogotá; private).

Inclusion criteria included age  $\geq 18$  years and a diagnosis of a primary HNSCC from 2011 to 2017. HNSCC was classified according to the International Classification of Diseases for Oncology, third edition,<sup>8</sup> and included LC (C32.0-C32.9), HC (C12.9 and 13C.0-13C.9), OC (C00.3-C00.9, C02.0-C02.3, C03.0-C03.9, C04.0-C04.9, C05.0, and C06.0-C06.9), and OPC (C01.0-C01.9, C02.4, C05.1-C05.2, C09.0-C09.9, and C10.0-10.9). All tumors were confirmed by histology.

### Explanatory Variables

All patients participated in a standardized interview conducted within 6 months of diagnosis, during which information on sociodemographic, lifestyle, and clinical factors was collected. Sociodemographic variables included residence at time of recruitment, sex (male or female), age at diagnosis ( $\leq 50$ , 51-60, 61-70, or  $\geq 71$  years), education level (categorized as illiterate, fundamental incomplete, fundamental complete,

medium complete, or superior), and self-identified race or ethnicity (white, black, mulatto, or other/unknown). Mulattos are considered to be people of mixed African and European descent. As a result of small numbers, Asians, indigenous, and mestizo (mixed indigenous and European descent people from Colombia) patients were grouped in the race or ethnicity category of other.

Lifestyle variables included comprehensive tobacco and alcohol histories. Tobacco use included cigarettes, cigars, and pipes, and the following 3 aspects were investigated: overall smoking history (never-smoker, former smoker, or current smoker), (2) smoking duration (categorized as never, 1-39, or  $\geq 40$  years), and (3) smoking intensity (categorized as never,  $< 30$ , or  $\geq 30$  pack-years). Alcohol intensity was examined as overall alcohol history (never-drinker, former drinker, or current drinker) and alcohol intensity (categorized as  $\leq 2$  or  $> 2$  drinks per day). Alcohol use included all types of alcohol, such as cachaça, vodka, whisky, tequila, rum, gin, beer, and wine.

Clinicopathologic data were obtained from medical records and pathologic reports. Stage at diagnosis was based on the seventh edition of the TNM classification of the American Joint Committee on Cancer (AJCC)<sup>9</sup> and classified into four categories (stage I-IV). Institutions from Buenos Aires, Goiania, and Vitoria provided additional information on HPV-16 E6 serology (a highly specific biomarker of HPV-16 infection) for patients with OPC, which corresponded to nearly 50% of patients with OPC. Patients with high seroreactivity (mean fluorescent intensity,  $\geq 1,000$ ) were considered to have HPV-related OPC.<sup>10</sup>

### Follow-Up

The primary outcome was overall survival, which was measured from the date of HNSCC diagnosis until death from any cause, the end of the study (June 31, 2018), or loss to follow-up, whichever occurred first. Patients contribute person-years of follow-up from their date of diagnosis to the date of death, loss to follow-up, or end of study. Therefore, there was a maximum of 7.5 years of

follow-up (January 1, 2011, to June 31, 2018). Information on vital status was obtained via routine follow-up visits and/or by linking the patient's data with vital statistics, cancer registry files, and medical records, depending on the available sources at each center. IARC provided an online database to enter follow-up information. For the main analysis, we assumed that a patient was lost to follow-up when he or she could not be tracked by any source of information in the last 24 months of the study completion.

### Statistical Analyses

Analyses were performed separately by anatomic cancer site. Because of the relatively small sample size, patients with HC were pooled with patients with LC for multivariable regression analysis. We estimated the probability of 3-year survival using the Kaplan-Meier method and compared differences in survival curves across strata for each variable using the log-rank test.

To evaluate the association between survival and the explanatory variables, we used hazard ratios (HRs) and 95% CIs estimated by means of Cox proportional hazards models. Variables included in the models were those that had an a priori hypothesized or previously observed association with HNSCC survival based on a review of the literature. These include age and stage at diagnosis, sex, education, race or ethnicity, and smoking and alcohol histories. Univariable and multivariable models (including all variables) were fitted. All multivariable models were adjusted for calendar year of diagnosis (categorized as 2011-2013 and 2014-2017) and center to account for possible changes in therapeutic management over time and different treatment approaches, respectively. The model with combined LC and HC was additionally adjusted for tumor site as a result of the potential differences in prognosis between the 2 types of cancer. The model for OPC also included HPV status because differences in prognosis between HPV-related and HPV-unrelated OPC have been reported.

The proportional hazards assumption, assessed by examining log-log survival plots and Schoenfeld residuals, was met for all variables in the multivariable models. Likelihood ratio tests were used to obtain overall *P* values for each variable in the multivariable models, considering comparison with the model excluding the variable in question. A small amount of data was missing for some explanatory variables, and all analyses were restricted to patients with complete data on all variables used in the multivariable models, thus assuming that the data were missing completely at random. All statistical analyses were performed using Stata 14.2 statistical software (StataCorp, College Station, TX). A 2-sided *P* < .05 was considered statistically significant.

### Ethics Approval

The InterCHANGE study was approved by the ethical review boards of the IARC and of each participating center. All

patients provided written informed consent for their participation in this study.

## RESULTS

From 2011 through 2017, a total of 1,829 patients newly diagnosed with HNSCC were enrolled in the InterCHANGE study. Patients with missing (*n* = 18), overlapping (*n* = 101), or "other" (*n* = 65) topography codes and those with missing (*n* = 100) or inconsistent date of known last vital status (at or before date of diagnosis, *n* = 7) were excluded from the study. Less than 5% of patients (*n* = 75) had missing data for  $\geq 1$  of the explanatory variables and were excluded. The proportions of individuals with missing data were 3.1% for stage, 1.5% for education, 0.4% for smoking history, and 0.5% for alcohol history. The proportion of patients lost to follow-up was 17.4%.

Analyses were based on 1,463 patients with a complete set of information. Of these patients, 378 (25.8%) had LC, 78 (5.3%) had HC, 599 (40.9%) had OC, and 408 (27.9%) had OPC. Most patients were from Brazil (*n* = 1,174, 80.3%), followed by Argentina (*n* = 228, 15.6%), Uruguay (*n* = 32, 2.2%), and Colombia (*n* = 29, 2.0%). Approximately 55.5% of patients were diagnosed with stage IV tumors, varying from 47.6% for LC to 70.8% for OPC. The baseline characteristics of the participants are listed in [Table 1](#).

By the end of the follow-up period, 672 patients (45.9%) had died, and the median follow-up time was 1.7 year (range, 0.1-6.9 years). On the basis of Kaplan-Meier analyses, 3-year survival was estimated to be highest for LC (56.0%; 95% CI, 50.3% to 61.2%) and OC (54.7%; 95% CI, 50.3% to 58.9%), intermediate for OPC (48.0%; 95% CI, 42.4% to 53.3%), and lowest for HC (37.8%; 95% CI, 25.9% to 49.6%). On the basis of the log-rank test, worse survival was associated with advanced stage at diagnosis ([Fig 1](#)), lower education (OC and OPC), smoking (OC and OPC), alcohol consumption (LC and OPC), male sex (OPC), and older age at diagnosis (OPC; [Appendix Table A1](#)).

For LC and HC combined, univariable analyses showed that advanced stage at diagnosis and alcohol consumption were associated with higher mortality rates. The mortality hazard in patients with HC was 1.7 times that in patients with LC ([Table 2](#)). In multivariable-adjusted models, the hazard for mortality was higher among older patients ( $\geq 71$  v  $\leq 50$  years: HR, 1.73; 95% CI, 0.99 to 3.02), mulattos (v whites: HR, 1.44; 95% CI, 1.02 to 2.02), those with advanced stage (IV v I: HR, 7.62; 95% CI, 3.49 to 16.64), and ever-drinkers (current v never: HR, 2.27; 95% CI, 1.36 to 3.77; and former v never: HR, 2.06; 95% CI, 1.24 to 3.41). After multivariable adjustment, the mortality hazard in patients with HC was approximately 1.6 times that in patients with LC (HR, 1.57; 95% CI, 1.08 to 2.30; [Table 2](#)).

For patients with OC, univariable analyses revealed that advanced stage at diagnosis, lower education level, and smoking history were associated with higher mortality rates

**TABLE 1.** Baseline Patient Characteristics by Head and Neck Cancer Site in the InterCHANGE Study (2011-2017)

Characteristic	All HNSCC			Larynx			Hypopharynx			Oral Cavity			Oropharynx		
	No. of Patients	%		No. of Patients	%		No. of Patients	%		No. of Patients	%		No. of Patients	%	P <sup>a</sup>
Total	1,463	100		378	25.8		78	5.3		599	40.9		408	27.9	< .0001
Countries															
Argentina	228	15.6		84	22.2		7	9.0		68	11.4		69	16.9	
Brazil	1,174	80.2		279	73.8		63	80.8		517	86.3		315	77.2	
Colombia	29	2.0		6	1.6		2	2.5		6	1.0		15	3.7	
Uruguay	32	2.2		9	2.4		6	7.7		8	1.3		9	2.2	
Period of diagnosis															.2180
2011-2013	989	67.6		266	70.4		52	66.7		411	68.6		260	63.7	
2014-2017	474	32.4		112	29.6		26	33.3		188	31.4		148	36.3	
Age at diagnosis, years															< .0001
≤ 50	247	16.9		35	9.3		19	24.4		110	18.3		83	20.3	
51-60	508	34.7		135	35.7		26	33.3		188	31.4		159	39.0	
61-70	437	29.9		134	35.4		18	23.1		167	27.9		118	28.9	
≥ 71	271	18.5		74	19.6		15	19.2		134	22.4		48	11.8	
Median age, years (range)	60 (21-95)			62 (32-94)			59 (39-83)			61 (22-95)			58 (21-85)		
Sex															< .001
Male	1,185	81.0		329	87.0		70	89.7		441	73.6		345	84.6	
Female	278	19.0		49	13.0		8	10.3		158	26.4		63	15.4	
Race/ethnicity															.1360
White	900	61.5		247	65.3		41	52.6		366	61.1		246	60.3	
Black	134	9.2		26	6.9		9	11.5		57	9.5		42	10.3	
Mulatto	384	26.2		98	25.9		23	29.5		161	26.9		102	25.0	
Other/unknown	45	3.1		7	1.9		5	6.4		15	2.5		18	4.4	
Stage at diagnosis															< .0001
I	174	11.9		58	15.3		3	3.8		95	15.9		18	4.4	
II	190	13.0		46	12.2		9	11.5		102	17.0		33	8.1	
III	287	19.6		94	24.9		14	18.0		111	18.5		68	16.7	
IV	812	55.5		180	47.6		52	66.7		291	48.6		289	70.8	
Education level															.0430
Superior	106	7.3		24	6.3		3	3.8		39	6.5		40	9.8	
Medium complete	182	12.4		43	11.4		10	12.8		91	15.2		38	9.3	
Fundamental complete	252	17.2		62	16.4		14	18.0		104	17.4		72	17.6	

(Continued on following page)

**TABLE 1.** Baseline Patient Characteristics by Head and Neck Cancer Site in the InterCHANGE Study (2011-2017) (Continued)

Characteristic	All HNSCC			Larynx			Hypopharynx			Oral Cavity			Oropharynx		
	No. of Patients	%		No. of Patients	%		No. of Patients	%		No. of Patients	%		No. of Patients	%	
Fundamental incomplete	777	53.1		220	58.2		41	52.6		295	49.2		221	54.2	
Illiterate	146	10.0		29	7.7		10	12.8		70	11.7		37	9.1	
Smoking history															
Never-smoker	221	14.4		33	8.7		11	14.1		121	20.2		46	11.3	
Former smoker	496	33.9		153	40.5		20	25.6		175	29.2		148	36.3	
Current smoker	756	51.7		192	50.8		47	60.3		303	50.6		214	52.4	
Alcohol history															
Never-drinker	251	17.1		69	18.3		5	6.4		131	21.9		46	11.3	
Former drinker	567	38.8		145	38.4		38	48.7		211	35.2		173	42.4	
Current drinker	645	44.1		164	43.4		35	44.9		257	42.9		189	46.3	

NOTE. Values are numbers and percentages, unless otherwise indicated.

Abbreviation: HNSCC, head and neck squamous cell carcinoma.

<sup>a</sup> $\chi^2$  P value.

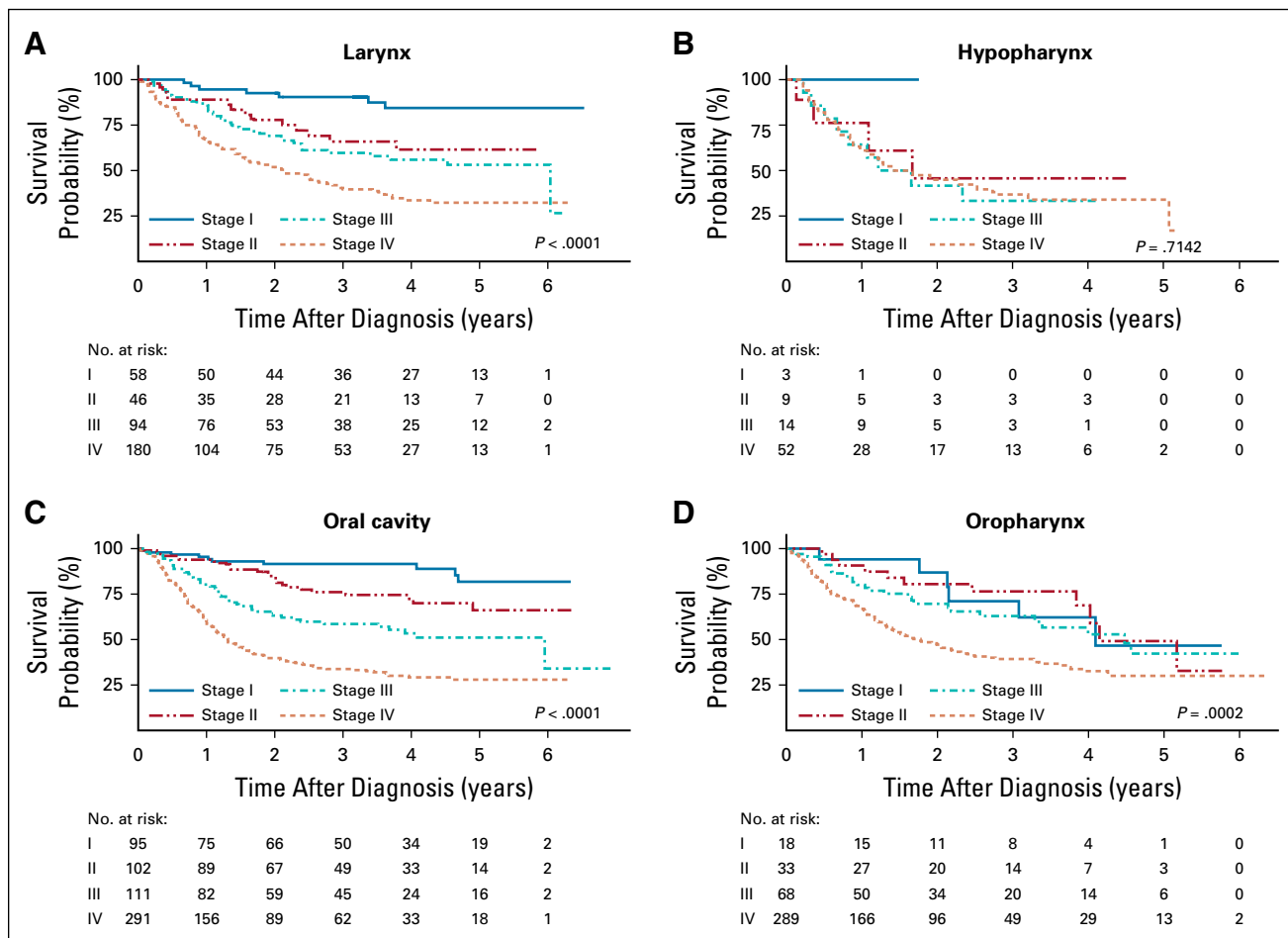


FIG 1. Overall survival by stage at diagnosis of head and neck squamous cell carcinoma for each anatomic site in the InterCHANGE study (2011-2017).

(Table 3). In multivariable-adjusted models, mortality hazards were significantly higher among patients age  $\geq 61$  years (61-70  $v \leq 50$  years: HR, 1.46; 95% CI, 0.99 to 2.14; and  $\geq 71 v \leq 50$  years: HR, 1.82; 95% CI, 1.18 to 2.78) and those with advanced-stage disease (IV  $v$  I: HR, 11.7; 95% CI, 6.09 to 22.43; Table 3).

Among patients with OPC, univariable analyses showed that older age, male sex, lower education, advanced stage at diagnosis, ever-smoker status, and ever-drinker status were associated with higher mortality rates (Table 4). After adjustment, mortality rates remained higher among men ( $v$  women: HR, 1.84; 95% CI, 1.08 to 3.14), patients age  $\geq 61$  years (61-70  $v \leq 50$  years: HR, 2.17; 95% CI, 1.36 to 3.46; and  $\geq 71 v \leq 50$  years: HR, 2.97; 95% CI, 1.68 to 5.24), and patients with advanced-stage disease (IV  $v$  I: HR, 3.49; 95% CI, 1.53 to 7.99; Table 4). In a subset analysis of 198 patients with OPC with available HPV-16 status (48.5% of all patients with OPC), 3-year survival was lower among patients with HPV-unrelated versus HPV-related OPC (44.6%  $v$  75.6%, respectively; Fig 2). Patients with HPV-unrelated OPC had a mortality rate 3.4 times that of patients with HPV-related OPC after

multivariable adjustment (HR, 3.35; 95% CI, 1.33 to 8.45; Table 4).

Similar associations between mortality and smoking duration and intensity and alcohol intensity were observed when compared with overall histories for all cancer sites (Appendix Table A2). When we performed an analysis restricted to centers with  $> 100$  patients (INCA in Rio de Janeiro, A.C. Camargo Cancer Center in São Paulo, Santa Rita de Cassia in Vitória, Araújo Jorge in Goiania, and Angel Roffo in Buenos Aires; total of 1,400 patients), 3-year survival did not differ substantially from results across centers.

**DISCUSSION**

The InterCHANGE study provided relevant information on the predictors of survival after larynx, hypopharynx, oral cavity, and oropharynx squamous cell carcinoma using up-to-date information (2011-2017) from 8 centers in 4 countries in South America. Three-year overall survival was  $< 50\%$  for HC and OPC and slightly  $> 50\%$  for LC and OC. Late stage at diagnosis was a strong independent predictor of worse survival for all HNSCC sites. Other predictors of lower survival were older age at diagnosis for all anatomic

**TABLE 2.** Relation of Sociodemographic and Clinical Factors to the Hazard of Death for Larynx and Hypopharynx Cancers Combined  
**Larynx and Hypopharynx Cancers (n = 456)**

Factor	No. of Patients	Univariable HR (95% CI)	P <sup>a</sup>	Multivariable HR <sup>b</sup> (95% CI)	P <sup>a</sup>
Age at diagnosis, years			.2960		.0270
≤ 50	54	Reference		Reference	
51–60	161	0.89 (0.56 to 1.42)		0.87 (0.53 to 1.43)	
61–70	152	1.17 (0.74 to 1.85)		1.29 (0.79 to 2.12)	
≥ 71	89	1.22 (0.74 to 2.01)		1.73 (0.99 to 3.02)	
Sex					
Male	399	1.38 (0.88 to 2.17)	.1467	1.07 (0.65 to 1.75)	.7888
Female	57	Reference		Reference	
Race/ethnicity			.0223		.0111
White	288	Reference		Reference	
Black	35	1.37 (0.85 to 2.19)		1.42 (0.84 to 2.41)	
Mulatto	121	1.23 (0.91 to 1.67)		1.44 (1.02 to 2.02)	
Other/unknown	12	0.17 (0.02 to 1.23)		0.13 (0.02 to 0.99)	
Stage at diagnosis			< .0001		< .0001
I	61	Reference		Reference	
II	55	3.49 (1.46 to 8.35)		3.53 (1.45 to 8.59)	
III	108	4.59 (2.08 to 10.17)		4.60 (2.05 to 10.32)	
IV	232	7.63 (3.56 to 16.32)		7.62 (3.49 to 16.64)	
Education level			.1325		.7191
Superior	27	Reference		Reference	
Medium complete	53	1.17 (0.51 to 2.69)		0.99 (0.42 to 2.33)	
Fundamental complete	76	1.33 (0.61 to 2.89)		0.87 (0.39 to 1.95)	
Fundamental incomplete	261	1.80 (0.88 to 3.68)		1.11 (0.53 to 2.32)	
Illiterate	39	1.44 (0.63 to 3.32)		0.82 (0.32 to 2.14)	
Smoking history			.0939		.3129
Never-smoker	44	Reference		Reference	
Former smoker	173	1.66 (0.94 to 2.93)		1.72 (0.94 to 3.18)	
Current smoker	239	1.77 (1.02 to 3.10)		1.66 (0.91 to 3.01)	
Alcohol history			.0007		.0029
Never-drinker	74	Reference		Reference	
Former drinker	183	2.04 (1.28 to 3.27)		2.06 (1.24 to 3.41)	
Current drinker	199	2.27 (1.43 to 3.61)		2.27 (1.36 to 3.77)	
Tumor site			.0028		.0219
Larynx	378	Reference		Reference	
Hypopharynx	78	1.71 (1.23 to 2.39)		1.57 (1.08 to 2.30)	

Abbreviation: HR, hazard ratio.

<sup>a</sup>Likelihood ratio test.

<sup>b</sup>Adjusted for all variables in the table plus center and calendar year of diagnosis.

sites, alcohol consumption (former or current drinkers) for LC/HC, male sex and low education level for OPC, and mulatto race/ethnicity for LC/HC. In addition, in a subset analysis, HPV-unrelated OPC was associated with significantly inferior survival compared with HPV-related OPC.

The proportion of stage IV HNSCCs was strikingly high (56%) in our cohort. If we combine stages III and IV, approximately

75% of patients were diagnosed at later stages. HNSCC diagnosis includes clinical and pathologic information.<sup>11</sup> Although immunohistochemical HPV testing has prognostic significance, this test is not currently mandatory to make therapeutic decisions for patients with OPC not included in deintensification trials.<sup>10</sup> Reasons for late HNSCC diagnosis in South America are often multifactorial and may include

**TABLE 3.** Relation of Sociodemographic and Clinical Factors to the Hazard of Death for Oral Cavity Cancer  
**Oral Cavity (n = 599)**

Factor	No. of Patients	Univariable HR (95% CI)	P <sup>a</sup>	Multivariable HR <sup>b</sup> (95% CI)	P <sup>a</sup>
Age at diagnosis, years			.5702		.0114
≤ 50	110	Reference		Reference	
51-60	188	1.05 (0.73 to 1.51)		1.03 (0.71 to 1.50)	
61-70	167	1.17 (0.81 to 1.68)		1.46 (0.99 to 2.14)	
≥ 71	134	1.28 (0.87 to 1.88)		1.82 (1.18 to 2.78)	
Sex			.3293		.6497
Male	441	1.15 (0.86 to 1.53)		1.09 (0.75 to 1.57)	
Female	158	Reference		Reference	
Race/ethnicity			.1659		.1048
White	366	Reference		Reference	
Black	57	1.05 (0.69 to 1.57)		0.90 (0.58 to 1.39)	
Mulatto	161	1.20 (0.92 to 1.58)		1.10 (0.82 to 1.47)	
Other/unknown	15	0.36 (0.09 to 1.46)		0.25 (0.06 to 1.06)	
Stage at diagnosis			< .0001		< .0001
I	95	Reference		Reference	
II	102	2.31 (1.11 to 4.82)		2.41 (1.15 to 5.04)	
III	111	4.59 (2.32 to 9.09)		4.97 (2.49 to 9.90)	
IV	291	9.27 (4.90 to 17.56)		11.7 (6.09 to 22.43)	
Education level			.0205		.2103
Superior	39	Reference		Reference	
Medium complete	91	1.49 (0.74 to 3.01)		0.88 (0.42 to 1.83)	
Fundamental complete	104	1.97 (1.00 to 3.90)		1.16 (0.56 to 2.39)	
Fundamental incomplete	295	1.81 (0.95 to 3.44)		1.01 (0.50 to 2.01)	
Illiterate	70	2.72 (1.36 to 5.46)		1.56 (0.73 to 3.36)	
Smoking history			.0478		.1864
Never-smoker	121	Reference		Reference	
Former smoker	175	0.83 (0.57 to 1.21)		0.63 (0.38 to 1.05)	
Current smoker	303	1.18 (0.85 to 1.64)		0.73 (0.44 to 1.23)	
Alcohol history			.1918		.3217
Never-drinker	131	Reference		Reference	
Former drinker	211	1.03 (0.73 to 1.46)		0.96 (0.59 to 1.55)	
Current drinker	257	1.27 (0.92 to 1.77)		1.19 (0.74 to 1.92)	

Abbreviation: HR, hazard ratio.

<sup>a</sup>Likelihood ratio test.

<sup>b</sup>Adjusted for all variables in the table plus center and calendar year of diagnosis.

lack of awareness of cancer signs and symptoms (in both patients and health care providers), lack of access to appropriate health care, and shortage of medical resources as a result of fragmented health systems.<sup>12-14</sup> Nearly half of the participants in our study (n = 677, 46.3%) were treated at public hospitals, where patients frequently face a significant delay in cancer diagnosis.<sup>15</sup> Whenever a delay in diagnosis occurs, the potential curability of HNSCC decreases considerably.<sup>12,16</sup> Importantly, we found that stage at diagnosis was strongly associated with worse survival for all HNSCC sites, regardless of the center of treatment.

Although not directly comparable, results from the United States and Europe also show a high proportion of advanced-stage disease (regional or distant) at diagnosis. For instance, data from the American Cancer Society showed that, during 2007-2013, 66% of patients with OC and OPC were diagnosed with advanced disease.<sup>17</sup> In Europe, a study that investigated survival after HNSCC from 86 cancer registries during 1999-2007 revealed that 54% of patients were diagnosed at an advanced stage (regional or metastatic).<sup>6</sup> These results highlight the unmet need of



**TABLE 4.** Relation of Sociodemographic and Clinical Factors to the Hazard of Death for Oropharynx Cancer

<b>Oropharynx (n = 408)</b>					
<b>Factor</b>	<b>No. of Patients</b>	<b>Univariable HR (95% CI)</b>	<b>P<sup>a</sup></b>	<b>Multivariable HR<sup>b</sup> (95% CI)</b>	<b>P<sup>a</sup></b>
Age at diagnosis, years					
≤ 50	83	Reference	.0009	Reference	.0008
51-60	159	1.74 (1.14 to 2.66)		1.69 (1.09 to 2.61)	
61-70	118	2.04 (1.31 to 3.17)		2.17 (1.36 to 3.46)	
≥ 71	48	2.58 (1.56 to 4.28)		2.97 (1.68 to 5.24)	
Sex					
Male	345	1.98 (1.24 to 3.14)	.0016	1.84 (1.08 to 3.14)	.0168
Female	63	Reference		Reference	
Race/ethnicity					
White	246	Reference	.9761	Reference	.9981
Black	42	1.05 (0.68 to 1.63)		0.97 (0.60 to 1.58)	
Mulatto	102	1.01 (0.73 to 1.40)		1.02 (0.71 to 1.47)	
Other/unknown	18	1.18 (0.55 to 2.54)		1.00 (0.33 to 2.96)	
Stage at diagnosis					
I	18	Reference	< .0001	Reference	< .0001
II	33	0.97 (0.36 to 2.62)		1.21 (0.44 to 3.32)	
III	68	1.31 (0.54 to 3.18)		1.86 (0.75 to 4.64)	
IV	289	2.43 (1.08 to 5.50)		3.49 (1.53 to 7.99)	
Education level					
Superior	40	Reference	< .0001	Reference	.0252
Medium complete	38	0.65 (0.28 to 1.52)		0.79 (0.32 to 1.94)	
Fundamental complete	72	1.88 (1.00 to 3.55)		1.96 (0.96 to 3.99)	
Fundamental incomplete	221	2.30 (1.30 to 4.09)		1.99 (1.02 to 3.88)	
Illiterate	37	2.09 (1.05 to 4.16)		1.83 (0.81 to 4.13)	
Smoking history					
Never-smoker	46	Reference	.0009	Reference	.0747
Former smoker	148	2.07 (1.12 to 3.81)		1.32 (0.67 to 2.59)	
Current smoker	214	2.67 (1.47 to 4.85)		1.87 (0.92 to 3.79)	
Alcohol history					
Never-drinker	46	Reference	.0001	Reference	.5638
Former drinker	173	3.34 (1.79 to 6.24)		1.41 (0.65 to 3.02)	
Current drinker	189	2.84 (1.52 to 5.33)		1.24 (0.58 to 2.67)	
HPV16 status; subset analysis of 198 patients <sup>c</sup>					
Positive	33	Reference	.0003	Reference	.0058
Negative	165	3.32 (1.53 to 7.21)		3.35 (1.33 to 8.45)	

Abbreviations: HPV, human papillomavirus; HR, hazard ratio.

<sup>a</sup>Likelihood ratio test.

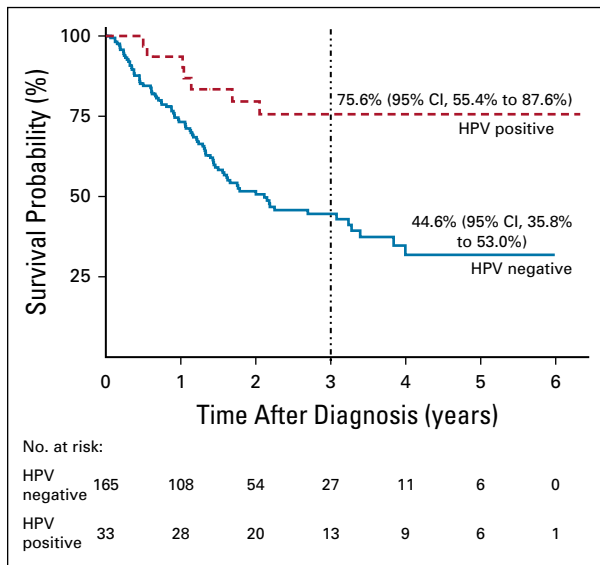
<sup>b</sup>Adjusted for all variables in the table plus center and calendar year of diagnosis.

<sup>c</sup>HPV16 E6 serology data from Vitoria, Goiania, and Buenos Aires (Angel Roffo).

early HNSCC diagnosis, not only in South America but also in several high-income countries.

We observed that older age at diagnosis was independently associated with lower survival for all cancer sites, consistent with previous studies in Europe<sup>5</sup> and North America.<sup>18</sup> Relevant factors that influence HNSCC prognosis among

elderly patients are the presence and severity of comorbidities and therapeutic approaches. Relevant comorbidities include cardiovascular and respiratory diseases, which are strongly associated with smoking and alcohol consumption.<sup>19</sup> These comorbidities likely contribute to treatment decisions.<sup>20,21</sup> Although older patients with



**FIG 2.** Three-year overall survival (and 95% CI) from oropharynx cancer by human papillomavirus (HPV) type 16 status in the InterCHANGE study (2011-2017).

HNSCC may have limited capacity to endure multimodality treatment (surgery, chemotherapy, and/or radiotherapy), a US study showed that elderly patients with advanced disease who received multimodality treatment had better survival than older patients who received single-modality therapy.<sup>18</sup> A careful assessment of risk and potential benefit of different treatment approaches is crucial to decrease HNSCC mortality and morbidity among elderly patients.

We observed higher mortality rates among ever-smokers with OPC in the univariable analysis, but this association was attenuated after adjustment for covariates. For patients with LC or HC, alcohol consumption was significantly associated with lower survival. Current and former drinkers had approximately 2.3 and 2.1 times higher mortality rates, respectively, compared with never-drinkers. The small difference between former and current drinkers may be partially related to cumulative years of drinking. Mortality rates were also higher among drinkers with OPC, although the association was attenuated after adjustment for confounders. Our findings are similar to those from a recent study in Uruguay,<sup>22</sup> which found alcohol use to be an independent predictor of worse survival for HNSCC. Alcohol consumption has also been associated with lower survival in patients with HNSCC in a number of studies in North America,<sup>23</sup> Asia,<sup>24</sup> and Europe.<sup>25</sup> In Latin America, harmful alcohol consumption is a major health problem and one of the leading risk factors for cancer, indicating a need for stronger policies to decrease alcohol misuse.<sup>26</sup>

Our study supports the role of HPV as a prognostic factor for OPC, with patients with HPV-related OPC experiencing better survival than patients with HPV-unrelated cancer, consistent with preceding studies in Europe and North and

South America.<sup>27,28</sup> Given the significant epidemiology changes in OPC observed over the past few decades, studies looking at the potential benefit of primary prevention (HPV vaccination) and secondary prevention (screening for oral HPV infection) are warranted.<sup>29</sup>

This study was limited because we lacked data on patient comorbidities, as well as detailed information on treatment approaches by stage at diagnosis. Because data were collected on patients diagnosed before 2018, we did not use the AJCC 8th edition staging system, which was fully implemented in January 2018. Consequently, we could not evaluate changes in staging classification, particularly for OPC. In addition, at the time of this study, tissue biomarkers for OPC (such as p16 expression) were not available, and this will be the subject of a future research project. However, several studies have demonstrated that HPV-16 E6 antibody is a highly specific biomarker for HPV positivity with false-positive rates < 1%.<sup>10,30-32</sup> Data were missing for some explanatory variables. A complete-records analysis was used, which assumes that data are missing completely at random. Deviations from this assumption could result in bias in the estimated associations. However, < 5% of individuals were excluded as a result of missing covariate data; therefore, it is unlikely that this had a significant impact on the results. The extent to which our cohort is representative of patients with HNSCC in South America is unclear, and additional studies including more South American centers are warranted to confirm our findings.

The InterCHANGE project has major strengths. This study represents a multicollaborative research effort to provide actual information on a disease with great mortality and morbidity. We obtained recent (2011-2017), good-quality, prospective data from several hospitals specializing in cancer treatment in South America, providing relevant findings to the literature, where data are scarce. Our study followed a standardized protocol, with all cancers confirmed by histology. We had nearly complete information on stage at diagnosis, which is a strong predictor of HNSCC outcome and is often missing in epidemiologic studies. We collected detailed information on tobacco and alcohol use, which are modifiable risk factors that not only cause HNSCC but also have been associated with cancer prognosis. In addition, we provided information on patients' race or ethnicity and education level, allowing us to account for social determinants of health, elements that may greatly influence early diagnosis and cancer survival.<sup>33</sup>

In summary, 3-year survival after HNSCC diagnosis was low in the South American centers we studied, especially for OPC and HC. Elderly patients had higher mortality rates, which highlights the need of careful assessment of risk and potential benefit of therapeutic management. Our findings of worse survival among former and current drinkers diagnosed with LC or HC emphasize the need for health policies aimed at decreasing alcohol consumption in the population. This is especially relevant in light of a recent

a systematic analysis of 195 countries that showed that the total attributable burden of alcohol use was greater than demonstrated in previous studies. Moreover, cancer, including HNSCC, accounted for a substantial proportion of

total alcohol-attributable deaths.<sup>34</sup> Finally, late stage at diagnosis was the strongest predictor of HNSCC survival. Efforts to detect cancer at an earlier stage are fundamental to improve survival after HNSCC in South America.

## AFFILIATIONS

<sup>1</sup>Genetic Epidemiology Group, International Agency for Research on Cancer, Lyon, France

<sup>2</sup>Division of Hematology/Oncology and Center for Healthcare Policy Research, University of California, Davis, Sacramento, CA

<sup>3</sup>Institute of Nutrition, Genetics, and Metabolism Research, Faculty of Medicine, Universidad El Bosque, Bogotá, Colombia

<sup>4</sup>University Hospital Foundation Santa Fe de Bogotá, Bogotá, Colombia

<sup>5</sup>National Cancer Institute, Rio de Janeiro, Brazil

<sup>6</sup>Santa Rita de Cassia Hospital (AFEC), Vitória, Brazil

<sup>7</sup>Biotechnology Postgraduation Program, Federal University of Espírito Santo, Vitória, Brazil

<sup>8</sup>Angel Roffo Institute of Oncology, Buenos Aires, Argentina

<sup>9</sup>Araújo Jorge Hospital, Goiania, Brazil

<sup>10</sup>A.C. Camargo Cancer Center, São Paulo, Brazil

<sup>11</sup>Hospital de Clínicas, Montevideo, Uruguay

<sup>12</sup>Italiano Hospital, Buenos Aires, Argentina

<sup>13</sup>Department of Medical Statistics, London School of Hygiene and Tropical Medicine, London, United Kingdom

Where authors are identified as personnel of the International Agency for Research on Cancer or WHO, the authors alone are responsible for the views expressed in this article, and they do not necessarily represent the decisions, policy, or views of the International Agency for Research on Cancer or WHO.

## CORRESPONDING AUTHOR

Paul Brennan, PhD, International Agency for Research on Cancer, 150 Cours Albert Thomas, Lyon, France 69372 Cedex 08; e-mail: BrennanP@iarc.fr.

## PRIOR PRESENTATION

Presented at the 6th Annual Symposium on Global Cancer Research, New York, NY, March 15, 2018.

## SUPPORT

Supported by the International Agency for Research on Cancer and the European Union's Horizon 2020 research and innovation program HEADSpAcE under Grant Agreement No. 825771; and R.A. was supported in part by the National Research Service Award (NRSA) for Primary Medical Care (Award No. T32HP300370401).

## AUTHOR CONTRIBUTIONS

**Conception and design:** Sandra Perdomo, Fernando Luis Dias, Luiz P. Kowalski, Mauricio Cuello, José Antonio Hakim, Paul Brennan, Maria Paula Curado

**Provision of study materials or patients:** Luis Felipe Ribeiro Pinto, José Roberto V. de Podestá, Marta Vilensky, Raul Eduardo Giglio, Luiz P. Kowalski, Mauro K. Ikeda, Andres Munyo, Paula A. Rodríguez-Urrego, David Alfonso Suarez-Zamora, Federico Cayol, Javier Oliver, Paul Brennan

**Collection and assembly of data:** Sandra Perdomo, Luis Felipe Ribeiro Pinto, Flávia Nascimento de Carvalho, José Roberto V. de Podestá, Sandra Ventorin von Zeidler, Priscila Marinho de Abreu, Marta Vilensky, Raul Eduardo Giglio, José Carlos Oliveira, Matinair Siqueira Mineiro, Luiz P. Kowalski, Mauro K. Ikeda, Mauricio Cuello, Andres Munyo, Paula A. Rodríguez-Urrego, David Alfonso Suarez-Zamora, Federico Cayol, Marcelo Fernando Figari, Javier Oliver, Valerie Gaborieau, Paul Brennan, Maria Paula Curado

**Data analysis and interpretation:** Renata Abrahão, Sandra Perdomo, Mauricio Cuello, Ruth H. Keogh, Paul Brennan, Maria Paula Curado

**Manuscript writing:** All authors

**Final approval of manuscript:** All authors

**Accountable for all aspects of the work:** All authors

## AUTHORS' DISCLOSURES OF POTENTIAL CONFLICTS OF INTEREST

The following represents disclosure information provided by authors of this manuscript. All relationships are considered compensated unless otherwise noted. Relationships are self-held unless noted. I = Immediate Family Member, Inst = My Institution. Relationships may not relate to the subject matter of this manuscript. For more information about ASCO's conflict of interest policy, please refer to [www.asco.org/rwc](http://www.asco.org/rwc) or [ascopubs.org/go/site/misc/authors.html](http://ascopubs.org/go/site/misc/authors.html).

Open Payments is a public database containing information reported by companies about payments made to US-licensed physicians (Open Payments).

**Sandra Perdomo**

**Consulting or Advisory Role:** Bristol-Myers Squibb

**Raul Eduardo Giglio**

**Consulting or Advisory Role:** MSD

**Speakers' Bureau:** MSD, Biotoscana, Merck KGaA, Bristol-Myers Squibb  
**Travel, Accommodations, Expenses:** MSD, Bristol-Myers Squibb

**José Antonio Hakim**

**Honoraria:** Johnson & Johnson

**Federico Cayol**

**Research Funding:** Merck KGaA

**Travel, Accommodations, Expenses:** Roche, MSD Oncology, Merck KGaA

No other potential conflicts of interest were reported.

## ACKNOWLEDGMENT

We thank Hélène Renard and Priscilia Chopard for support in recruitment logistics within InterCHANGE.

## REFERENCES

- Perdomo S, Martin Roa G, Brennan P, et al: Head and neck cancer burden and preventive measures in Central and South America. *Cancer Epidemiol* 44:S43-S52, 2016 (suppl 1)
- Lewis A, Kang R, Levine A, et al: The new face of head and neck cancer: The HPV epidemic. *Oncology (Williston Park)* 29:616-626, 2015

3. Chaturvedi AK, Engels EA, Pfeiffer RM, et al: Human papillomavirus and rising oropharyngeal cancer incidence in the United States. *J Clin Oncol* 29:4294-4301, 2011
4. Anantharaman D, Abedi-Ardekani B, Beachler DC, et al: Geographic heterogeneity in the prevalence of human papillomavirus in head and neck cancer. *Int J Cancer* 140:1968-1975, 2017
5. Abrahão R, Anantharaman D, Gaborieau V, et al: The influence of smoking, age and stage at diagnosis on the survival after larynx, hypopharynx and oral cavity cancers in Europe: The ARCAGE study. *Int J Cancer* 143:32-44, 2018
6. Gatta G, Botta L, Sánchez MJ, et al: Prognoses and improvement for head and neck cancers diagnosed in Europe in early 2000s: The EURO-CARE-5 population-based study. *Eur J Cancer* 51:2130-2143, 2015
7. Pulte D, Brenner H: Changes in survival in head and neck cancers in the late 20th and early 21st century: A period analysis. *Oncologist* 15:994-1001, 2010
8. Fritz A, Percy C, Jack A, et al: *International Classification of Diseases for Oncology (ed 3)*. Geneva, Switzerland, World Health Organization, 2013
9. Edge SB, Compton CC: The American Joint Committee on Cancer: The 7th edition of the AJCC cancer staging manual and the future of TNM. *Ann Surg Oncol* 17:1471-1474, 2010
10. Lang Kuhs KA, Anantharaman D, Waterboer T, et al: Human papillomavirus 16 E6 antibodies in individuals without diagnosed cancer: A pooled analysis. *Cancer Epidemiol Biomarkers Prev* 24:683-689, 2015
11. Amin M, Edge S, Greene F, et al: *AJCC Cancer Staging Manual (ed 8)*. New York, NY, Springer, 2017
12. Strasser-Weippl K, Chavarri-Guerra Y, Villarreal-Garza C, et al: Progress and remaining challenges for cancer control in Latin America and the Caribbean. *Lancet Oncol* 16:1405-1438, 2015
13. Carvalho AL, Pintos J, Schlecht NF, et al: Predictive factors for diagnosis of advanced-stage squamous cell carcinoma of the head and neck. *Arch Otolaryngol Head Neck Surg* 128:313-318, 2002
14. Frenk J, Gómez-Dantés O: Health systems in Latin America: The search for universal health coverage. *Arch Med Res* 49:79-83, 2018
15. Felippu AW, Freire EC, Silva Rde A, et al: Impact of delay in the diagnosis and treatment of head and neck cancer. *Braz J Otorhinolaryngol* 82:140-143, 2016
16. Kowalski LP, Carvalho AL: Influence of time delay and clinical upstaging in the prognosis of head and neck cancer. *Oral Oncol* 37:94-98, 2001
17. Siegel RL, Miller KD, Jemal A: Cancer statistics, 2018. *CA Cancer J Clin* 68:7-30, 2018
18. Moye VA, Chandramouleeswaran S, Zhao N, et al: Elderly patients with squamous cell carcinoma of the head and neck and the benefit of multimodality therapy. *Oncologist* 20:159-165, 2015
19. Paleri V, Wight RG, Silver CE, et al: Comorbidity in head and neck cancer: A critical appraisal and recommendations for practice. *Oral Oncol* 46:712-719, 2010
20. Sanabria A, Carvalho AL, Vartanian JG, et al: Comorbidity is a prognostic factor in elderly patients with head and neck cancer. *Ann Surg Oncol* 14:1449-1457, 2007
21. Sanabria A, Carvalho AL, Vartanian JG, et al: Factors that influence treatment decision in older patients with resectable head and neck cancer. *Laryngoscope* 117:835-840, 2007
22. Alvarez AD, Munyo-Estefan A, Borche G, et al: Cáncer de cabeza y cuello en Uruguay: Análisis de sobrevida en dos centros de referencia. *Rev Med Urug (Montev)* 34:21-28, 2018
23. Mayne ST, Cartmel B, Kirsh V, et al: Alcohol and tobacco use prediagnosis and postdiagnosis, and survival in a cohort of patients with early stage cancers of the oral cavity, pharynx, and larynx. *Cancer Epidemiol Biomarkers Prev* 18:3368-3374, 2009
24. Kawakita D, Oze I, Hosono S, et al: Prognostic value of drinking status and aldehyde dehydrogenase 2 polymorphism in patients with head and neck squamous cell carcinoma. *J Epidemiol* 26:292-299, 2016
25. Leoncini E, Vukovic V, Cadoni G, et al: Clinical features and prognostic factors in patients with head and neck cancer: Results from a multicentric study. *Cancer Epidemiol* 39:367-374, 2015
26. Pan American Health Organization, WHO: *Health in Americas, 2017 Edition: Regional Look and Country Profiles*. Washington, DC, Pan American Health Organization, 2017
27. D'Souza G, Anantharaman D, Gheit T, et al: Effect of HPV on head and neck cancer patient survival, by region and tumor site: A comparison of 1362 cases across three continents. *Oral Oncol* 62:20-27, 2016
28. Ang KK, Harris J, Wheeler R, et al: Human papillomavirus and survival of patients with oropharyngeal cancer. *N Engl J Med* 363:24-35, 2010
29. Gillison ML, Chaturvedi AK, Anderson WF, et al: Epidemiology of human papillomavirus-positive head and neck squamous cell carcinoma. *J Clin Oncol* 33:3235-3242, 2015
30. Anantharaman D, Gheit T, Waterboer T, et al: Human papillomavirus infections and upper aero-digestive tract cancers: The ARCAGE study. *J Natl Cancer Inst* 105:536-545, 2013
31. Kreimer AR, Johansson M, Waterboer T, et al: Evaluation of human papillomavirus antibodies and risk of subsequent head and neck cancer. *J Clin Oncol* 31:2708-2715, 2013
32. Ribeiro KB, Levi JE, Pawlita M, et al: Low human papillomavirus prevalence in head and neck cancer: Results from two large case-control studies in high-incidence regions. *Int J Epidemiol* 40:489-502, 2011
33. McDaniel JT, Nuhu K, Ruiz J, et al: Social determinants of cancer incidence and mortality around the world: An ecological study. *Glob Health Promot* 26:41-49, 2019
34. GBD 2016 Alcohol Collaborators: Alcohol use and burden for 195 countries and territories, 1990-2016: A systematic analysis for the Global Burden of Disease Study 2016. *Lancet* 392:1015-1035, 2018



## APPENDIX

**TABLE A1.** Three-Year OS After Head and Neck Squamous Cell Carcinoma by Anatomic Site in the InterCHANGE Study (2011-2017)

Factor	Larynx (n = 378)		Hypopharynx (n = 78)		Oral Cavity (n = 599)		Oropharynx (n = 408)	
	3-Year OS (95% CI)	P <sup>a</sup>	3-Year OS (95% CI)	P <sup>a</sup>	3-Year OS (95% CI)	P <sup>a</sup>	3-Year OS (95% CI)	P <sup>a</sup>
Overall	56.0 (50.3 to 61.2)		37.8 (25.9 to 49.6)		54.7 (50.3 to 58.9)		48.0 (42.4 to 53.3)	
Period of diagnosis		.4676		.3649		.5233		.0572
2011-2013	54.5 (48.0 to 60.6)		34.7 (21.0 to 48.8)		55.4 (50.1 to 60.3)		44.6 (38.0 to 51.0)	
2014-2017	61.0 (49.5 to 70.7)		43.7 (21.5 to 64.1)		53.6 (45.4 to 61.2)		56.4 (46.5 to 65.1)	
Age at diagnosis, years		.1707		.3990		.5658		.0013
≤ 50	65.2 (45.7 to 79.1)		43.0 (19.8 to 64.4)		57.0 (46.4 to 66.2)		61.3 (48.6 to 71.7)	
51-60	60.1 (50.5 to 68.4)		39.5 (18.8 to 59.6)		55.8 (48.0 to 63.0)		48.5 (39.7 to 56.8)	
61-70	52.9 (43.3 to 61.7)		25.6 (8.0 to 48.0)		53.0 (44.6 to 60.7)		41.7 (31.2 to 51.9)	
≥ 71	49.1 (36.2 to 60.8)		45.4 (17.8 to 69.7)		53.6 (43.9 to 62.4)		36.7 (21.9 to 51.5)	
Sex		.0980		.4294		.3347		.0033
Male	54.5 (48.4 to 60.1)		39.0 (26.4 to 51.4)		53.7 (48.5 to 58.5)		44.7 (38.7 to 50.5)	
Female	65.8 (49.6 to 78.0)		30.0 (4.4 to 62.8)		57.8 (49.1 to 65.5)		67.1 (52.6 to 78.1)	
Race/ethnicity		.2300		.1912		.2285		.9747
White	57.6 (50.5 to 64.0)		47.0 (29.1 to 63.0)		56.5 (50.8 to 61.7)		48.5 (41.3 to 55.3)	
Black	42.4 (22.8 to 60.8)		29.6 (5.2 to 60.7)		53.2 (38.6 to 65.8)		47.1 (30.3 to 62.3)	
Mulatto	53.3 (42.3 to 63.1)		17.3 (4.5 to 36.9)		49.6 (41.1 to 57.5)		48.1 (37.3 to 58.1)	
Other/unknown	100.0		80.0 (20.4 to 96.9)		81.5 (43.5 to 95.1)		41.3 (12.7 to 68.5)	
Education level		.1680		.2242		.0201		.0002
Superior	61.4 (35.3 to 79.5)		— <sup>b</sup>		70.5 (52.0 to 82.9)		62.8 (43.2 to 77.3)	
Medium complete	77.7 (59.8 to 88.4)		23.3 (3.6 to 52.9)		61.9 (50.5 to 71.4)		76.4 (58.2 to 87.5)	
Fund complete	56.5 (41.5 to 69.0)		60.6 (29.2 to 81.6)		51.4 (40.5 to 61.2)		52.6 (39.6 to 64.0)	
Fundamental incomplete	52.1 (44.9 to 58.8)		31.0 (16.4 to 46.9)		55.2 (48.9 to 61.1)		37.8 (30.3 to 45.2)	
Illiterate	53.3 (33.3 to 69.7)		43.8 (11.9 to 72.6)		37.9 (25.4 to 50.5)		50.2 (32.5 to 65.6)	
Stage at diagnosis		< .0001		.7142		< .0001		.0002
I	90.4 (78.5 to 95.9)		— <sup>b</sup>		91.6 (83.1 to 95.9)		71.1 (39.6 to 88.2)	
II	65.9 (48.2 to 78.8)		45.7 (11.0 to 75.7)		76.1 (65.6 to 83.8)		76.5 (56.6 to 88.1)	
III	59.7 (48.3 to 69.4)		33.3 (10.9 to 58.0)		58.6 (48.2 to 67.5)		62.9 (48.9 to 74.1)	
IV	40.4 (32.6 to 48.1)		36.8 (22.8 to 51.0)		33.8 (27.9 to 39.7)		39.3 (32.9 to 45.7)	
Smoking status		.2052		.4812		.0511		.0022
Never	69.7 (49.5 to 83.1)		54.9 (18.7 to 80.6)		58.4 (48.4 to 67.1)		73.4 (55.6 to 85.0)	
Former	54.1 (45.1 to 62.3)		31.4 (12.4 to 52.6)		61.3 (53.0 to 68.6)		50.8 (41.7 to 59.1)	
Current	55.0 (47.0 to 62.2)		37.7 (22.4 to 52.9)		49.8 (43.7 to 55.7)		41.0 (33.4 to 48.4)	
Drinking status		.0034		.7691		.1885		.0004
Never	75.5 (62.5 to 84.6)		40.0 (5.2 to 75.3)		60.9 (51.3 to 69.2)		75.4 (58.9 to 86.0)	
Former	53.4 (44.2 to 61.7)		40.5 (24.1 to 56.3)		59.6 (52.2 to 66.3)		39.1 (30.8 to 47.2)	
Current	49.4 (40.8 to 57.5)		32.6 (15.0 to 51.5)		48.0 (41.3 to 54.4)		49.4 (41.1 to 57.1)	
HPV16 status; subset analysis of 198 patients <sup>c</sup>								.0013
Positive	NA		NA		NA		75.6 (55.4 to 87.6)	
Negative	NA		NA		NA		44.6 (35.8 to 53.0)	

Abbreviations: HPV, human papillomavirus; HR, hazard ratios; NA, not applicable; OS, overall survival.

<sup>a</sup>Log-rank test *P* value.

<sup>b</sup>Less than 3 years of follow-up.

<sup>c</sup>HPV16 E6 serology data from Vitoria, Goiania, and Buenos Aires (Angel Roffo).

**TABLE A2.** Association of Smoking and Alcohol Duration and Intensity to Mortality in the InterCHANGE Study (2011-2017)

Factor	Larynx and Hypopharynx		Oral Cavity		Oropharynx	
	Multivariable HR <sup>a</sup> (95% CI)	P <sup>b</sup>	Multivariable HR <sup>a</sup> (95% CI)	P <sup>b</sup>	Multivariable HR <sup>a</sup> (95% CI)	P <sup>b</sup>
Tobacco duration						
Never	Reference	.3343	Reference	.2006	Reference	.0720
< 30 years	1.66 (0.84 to 3.29)		0.61 (0.36 to 1.06)		1.20 (0.59 to 2.46)	
≥ 30 years	1.38 (0.77 to 2.46)		0.68 (0.40 to 1.15)		1.77 (0.89 to 3.53)	
Tobacco pack-years						
Never or < 1	Reference	.5347	Reference	.0649	Reference	.3959
1-39	1.37 (0.77 to 2.45)		0.61 (0.39 to 0.96)		1.35 (0.74 to 2.48)	
≥ 40	1.33 (0.76 to 2.33)		0.57 (0.36 to 0.92)		1.50 (0.81 to 2.78)	
Alcohol intensity						
Never	Reference	.0013	Reference	.9803	Reference	.7383
≤ 2 drinks per day	2.01 (1.15 to 3.51)		0.95 (0.57 to 1.58)		1.26 (0.58 to 2.75)	
> 2 drinks per day	2.31 (1.42 to 3.76)		0.95 (0.58 to 1.56)		1.36 (0.61 to 3.00)	

Abbreviation: HR, hazard ratio.

<sup>a</sup>Each covariate was assessed in separate models adjusted for sex, age, stage at diagnosis, race/ethnicity, education, center, calendar year of diagnosis, and alcohol and/or smoking histories (never, former, or current), as appropriate.

<sup>b</sup>Likelihood ratio test.