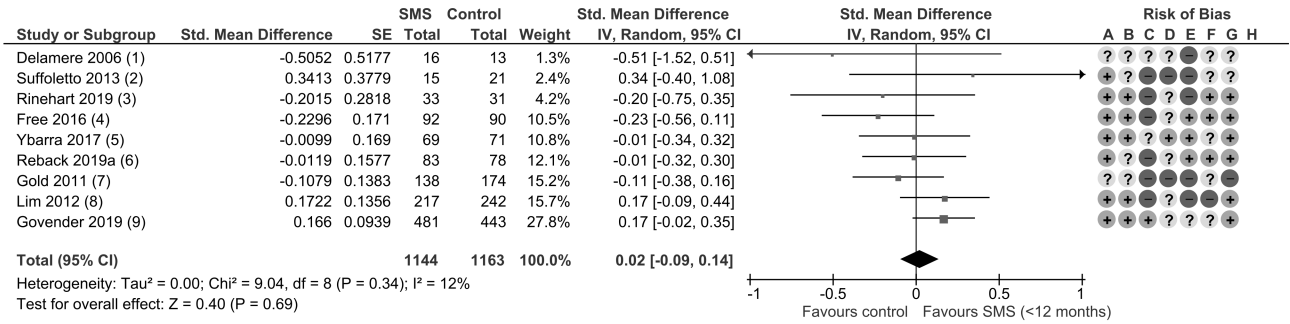


# SMS intervention versus inactive control

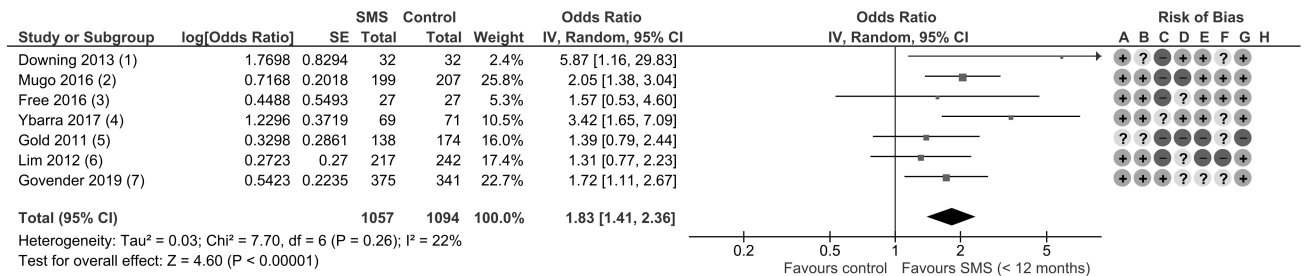
## a | Condom use (self-reported at < 12 months)



**Footnote**

- (1) HIC, unprotected sexual intercourse (inverse), 3 m; (2) HIC, condom use at last vaginal sex, 3 m; (3) HIC, unprotected sex (inverse), 6 m
- (4) HIC, condom use at last sex, 1 m; (5) HIC, condomless sex acts (inverse), 4m1w, mean, subgroup: sexually experienced, placebo-control
- (6) HIC, TXT arm, episodes of condomless sexual intercourse with non-main partner (comb. data obtained from trialist) past month (inverse), 6 m, mean
- (7) HIC, consistent condom use (inverse), 6 m, AOR accounting for baseline differences; (8) HIC, not always used condom with risky partners (inverse), 6 m, f/m comb. (9) LMIC, no condom use at last sex (inverse), 6 m, AOR accounting for baseline differences

## b | STI/HIV testing (objectively confirmed or self-reported at < 12 months)

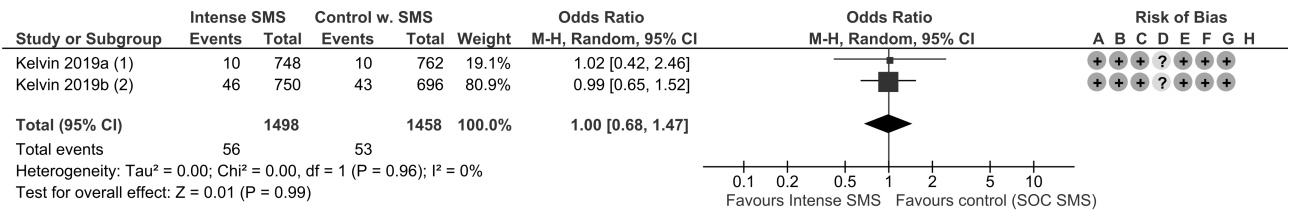


**Footnote**

- (1) HIC, chlamydia re-testing, 3-4 m (objectively confirmed); (2) LMIC, HIV re-testing, 2 w (objectively confirmed)
- (3) HIC, STI testing prior to first sex w. someone new, 1 m (self-reported); (4) HIC, HIV testing, 4m1w (self-reported), AOR accounting for baseline differences, subgroup: sexually experienced, placebo-control; (5) HIC, STI testing, 6 m (self-reported), placebo control
- (6) HIC; STI testing in past 6 months, 6 m (self-reported), f/m combined; (7) LMIC; HIV testing, 6 m (self-reported), AOR accounting for baseline differences

# SMS intervention versus standard of care control containing active SMS component

## c | STI/HIV testing (objectively confirmed or self-reported at < 12 months)



**Footnote**

- (1) LMIC; truckers tested for HIV, 2 m (objectively confirmed); (2) LMIC; female sex workers tested for HIV, 2 m (objectively confirmed)

⊕ low risk   ⊖ high risk   ? unclear risk