

Price Malcolm (Orcid ID: 0000-0002-7352-3027)

Jackson Dan (Orcid ID: 0000-0002-4963-8123)

Empirical comparison of univariate and multivariate meta-analysis in Cochrane Pregnancy and Childbirth reviews with multiple binary outcomes

Authors: Price MJ^{1*}, Blake H², Kenyon S¹, White IR³, Jackson D⁴, Kirkham JJ⁵, Neilson J⁵, Deeks JJ¹, Riley RD⁶

Author affiliations

¹University of Birmingham, Birmingham, UK.

²London School of Hygiene and Tropical Medicine, London, UK.

³MRC Clinical Trials Unit, University College London, London, UK.

⁴MRC Biostatistics Unit, Cambridge, UK.

⁵University of Liverpool, Liverpool, UK.

⁶Keele University, Keele, UK.

*Corresponding Author address

Dr Malcolm J Price
Lecturer in Biostatistics
Institute of Applied Health Research
Public Health Building,
University of Birmingham,
Edgbaston,
Birmingham,
B15 2TT
m.price.2@bham.ac.uk
0121 414 2530

This article has been accepted for publication and undergone full peer review but has not been through the copyediting, typesetting, pagination and proofreading process which may lead to differences between this version and the Version of Record. Please cite this article as doi: 10.1002/jrsm.1353

Abstract:

Background: Multivariate meta-analysis (MVMA) jointly synthesise effects for multiple correlated outcomes. The MVMA model is potentially more difficult and time-consuming to apply than univariate models, so if its use makes little difference to parameter estimates it could be argued that it is redundant.

Methods: We assessed the applicability and impact of MVMA in Cochrane Pregnancy and Childbirth (CPCB) systematic reviews. We applied MVMA to CPCB reviews published between 2011 to 2013 with two or more binary outcomes with at least three studies, and compared findings with results of univariate meta-analyses. Univariate random effects meta-analysis models were fitted using restricted maximum likelihood estimation (REML).

Results: 80 CPCB reviews were published. MVMA could not be applied in 70 of these reviews. MVMA was not feasible in 3 of the remaining 10 reviews because the appropriate models failed to converge. Estimates from MVMA agreed with those of univariate analyses in most of the other 7 reviews.

Statistical significance changed in 2 reviews: in 1 this was due to a very small change in p-value; in the other, the MVMA result for one outcome suggested previous univariate results may be vulnerable to small study effects and that the certainty of clinical conclusions needs consideration.

Conclusions: MVMA methods can be applied only in a minority of reviews of interventions in pregnancy and childbirth, and can be difficult to apply due to missing correlations or lack of convergence. Nevertheless, clinical and/or statistical conclusions from MVMA may occasionally differ from those from univariate analyses.

Keywords:

Comparison; Multivariate meta-analysis; univariate meta-analysis; evidence synthesis;

Introduction

Meta-analysis is an umbrella term for a suite of statistical models for synthesising parameter estimates (e.g. intervention effect estimates) from multiple studies. Each model implies a set of assumptions, such as fixed or random intervention effects [1]. Often a review has several outcomes of interest (such as pre-term delivery and neonatal intensive care) and the effect estimates for these outcomes may be correlated within primary studies, because the same patients provide data towards them. Standard univariate meta-analysis methods do not account for this correlation. In recognition of this, multivariate meta-analysis (MVMA) models have been developed [2, 3, 4]. Multivariate models have a number of potential advantages over univariate counterparts. They facilitate borrowing of strength across outcomes [5] which utilises more information and thereby potentially reduces uncertainty and the impact of outcome reporting bias [6]. They also facilitate estimation of joint confidence and prediction regions [4, 7] and allow appropriate confidence intervals to be calculated for functions of summary estimates for multiple correlated outcomes [8].

Empirical evidence of the impact of MVMA on results and conclusions is limited. The MVMA model is potentially more difficult and time-consuming to apply than univariate models, so if its use makes little difference to parameter estimates it could be argued that it is redundant. Trikalinos et al [9] reported results of a systematic investigation of the difference in results across all reviews published by Cochrane in the first quarter of 2012 for which the MVMA model was readily applicable. They concluded that the difference between univariate and multivariate results was generally small and usually clinical conclusions did not change. This finding concurs with results from many of the example datasets analysed in methodological papers [10, 11]. However, there are also many examples that suggest the impact of MVMA can be large [5, 6], especially when there are (selectively) missing outcomes [12, 13].

The literature suggests that the difference between univariate and multivariate results tends to be greater in circumstances where the outcomes are highly correlated and some studies do not report all outcomes (i.e. there is missing outcome data). Such situations often occur in reviews performed by the

Cochrane Pregnancy and Childbirth (CPCB) Group, which routinely examines multiple outcomes for both the mother and baby [14]; Meaning that MVMA is more likely to have an impact in this clinical area. In this paper we use both univariate and MVMA models to analyse aggregate data reported in CPCB reviews. The purpose of the paper is three-fold: First, to identify how often the multivariate model is reasonably applicable in CPCB reviews. Second, to determine how often, and to what degree, the use of the multivariate model leads to different statistical results and conclusions than those obtained from the standard univariate model. Third, to highlight any circumstances where reported clinical conclusions in these reviews should potentially be reconsidered in light of results from multivariate models.

Methods

Inclusion criteria

We screened the CPCB database [15] to identify all reviews, new or updated, published between January 2011 and February 2013. Only reviews of interventions were considered. If a review was published and updated during this period then we only considered the most recent version.

Each review was screened by MP for whether it contained eligible outcomes. We considered an outcome to be eligible if it was a binary primary outcome and was reported by three or more studies. We considered a review to be potentially suitable for MVMA if it had two eligible maternal outcomes or two eligible neonatal outcomes. Some reviews reported multiple intervention contrasts (e.g. results comparing intervention A versus B, B versus C etc.). If more than one contrast would be eligible we considered only the first intervention contrast listed in the review that fulfils these criteria. We then choose either multiple maternal outcomes or multiple neonatal outcomes based on whichever was reported first. Then, all binary primary outcomes of this type reported by at least three studies were analysed. Subgroup analysis results were not included. We limited the analysis to primary outcomes to keep the dataset manageable, and to maintain focus on the most clinically relevant outcomes.

For each included outcome in each review, the outcome description, intervention description, and the number of events and number of patients at follow-up (i.e. a standard 2-by-2 data table) in each arm were extracted. Data extraction was performed by two statisticians independently (MP and HB). The datasets were compared and any differences reconciled upon discussion with a third reviewer as necessary. Data and outcomes were discussed with clinical collaborators before analyses were undertaken.

Evidence Synthesis Methods

For each review that met the inclusion criteria, and for each outcome identified, we derived the log odds ratio estimates and their variances for each primary study. If no events occurred in either arm then the corresponding outcome was treated as missing in that study. This is in keeping with the usual approach to univariate meta-analysis in which studies with no events in either arm are given zero weight [16]. If this was the case for all outcomes (to be analysed) in a study then the study was excluded from the analysis. If zero or 100% of patients in just 1 arm had events then 0.5 was added to each cell in order to derive the odds ratio and its standard error [16, 17].

We then applied, to each meta-analysis dataset and to each outcome separately, the standard univariate random effects meta-analysis model fitted using restricted maximum likelihood estimation (REML) (Appendix 1) [1, 18, 19]. The random effects model was used to account for heterogeneity which was expected in most CPCB reviews [14]. Meta-analysis was performed on the log odds ratio scale and the summary results were expressed as odds ratios, with 95% confidence intervals.

If within-study correlations between treatment effects on outcomes were calculable we attempted to fit a fully hierarchical MVMA (here, bivariate) random effects model (Appendix 2) to each pair of outcomes in each review. As we only had access to summary level data reported in journal articles this was only possible if the outcomes were structurally related, as follows. If the outcomes were mutually exclusive, such as vaginal birth and Caesarean section, then within-study correlations were estimated using the method of Trikalinos et al (see their equation A3 in their

Appendix A) [20]. If one outcome was a subset of the other (e.g. Caesarean section is a subset of operative birth) the method shown by Trikalinos and Olkin and derived by Wei and Higgins (see their equation 10) [21,22] was used. In both cases, correlations in the treatment effect estimates for each pair of outcomes are induced due to the binary outcomes being negatively correlated for mutually exclusive outcomes and positively correlated for subset outcomes. In both papers analytical solutions for deriving these within-study correlations are given, which require the meta-analyst to input the number of participants and number of events in each trial arm for each outcome. If neither of these two methods to calculate within-study correlations were applicable, we applied the "Riley model", the alternative MVMA model which does not require within-study correlations as it models an amalgamation of the within-study and between-study correlations (see Appendix 3)[3]. Finally for each review containing more than two eligible outcomes a MVMA model was fitted to *all* outcomes if possible, either using the fully hierarchical approach or the Riley model (e.g. a trivariate model was fitted if three outcomes were eligible). All univariate and MVMA models were estimated in STATA version 14 using restricted maximum likelihood via the mvmeta module [23, 24]. Standard errors for the summary estimates account for uncertainty in the between study variance and covariance matrix estimates [23]. Computational methods including criteria for lack of convergence of the Riley model are outlined in Appendix 4.

Results from univariate and multivariate meta-analysis were compared by inspection of their summary estimates and confidence intervals, and in particular the impact on the clinical and/or statistical conclusions that would be drawn.

Results

Identification of reviews

Our search identified 80 CPCB reviews published between January 2011 and February 2013. Of these, 27 reviews (34%) included at least one eligible outcome as defined above, of which 10 included at least two primary binary maternal or child outcomes for the same intervention contrast, and hence were potentially suitable for MVMA. A more detailed breakdown

of the results at each stage of the selection process is given in Table 1.

Results from analysed reviews

Applicability and convergence

Of the 10 eligible reviews, two, three and four eligible outcomes were identified in seven, two and one of the reviews, respectively. Within-study correlations were calculable in four of the reviews (two contained outcomes that were mutually exclusive, and the other two contained outcomes with a subset relationship). In the other six reviews only the Riley model could be considered: in three of these it did not converge for any pair of outcome using any of the methods described in appendix 4. Hence multivariate results were only available for seven of the ten reviews. These seven reviews are now discussed in turn and results are presented in Table 2:

Review 1 - *Cardiotocography versus intermittent auscultation of fetal heart on admission to labour ward for assessment of fetal wellbeing [25]*

This review compares admission cardiotocography versus intermittent auscultation for outcomes of 1) caesarean section, and 2) instrumental vaginal birth. These two outcomes are mutually exclusive, and therefore within-study correlations could be derived (range from lowest to highest within study correlation -0.02 to -0.10). The comparison includes four trials all reporting both outcomes. The between study correlation is estimated to be +1 and the summary intervention effect estimates and confidence intervals are almost identical for bivariate and univariate models (Table 2). In the univariate model the confidence interval for the intervention effect on caesarean section excludes the null value (summary OR: 1.21, 95%CI: 1.00,1.46) whereas in the bivariate model it includes it (summary OR: 1.23, 95% CI: 0.99,1.52). This slight change should not affect the clinical conclusions for this outcome, although statistical significance at the conventional 5% level is affected, due to the p-value in the MVMA being > 0.05.

Review 2 - Cervical stitch (cerclage) for preventing preterm birth in singleton pregnancy (Review) [26]

This review compares cerclage versus no cerclage for outcomes of 1) all perinatal losses, 2) serious neonatal morbidity, and 3) the composite outcome of perinatal deaths and serious neonatal morbidity. Outcomes 1 and 2 are subsets of outcome 3 and therefore, using the approach of Wei and Higgins[22], the within-study correlations could be derived between outcomes 1 and 3, and outcomes 2 and 3 (range of within-study correlations from lowest to highest 0.64-1.00). This allowed use of the fully hierarchical model for these two analyses. However, outcomes 1 and 2 are not mutually exclusive, nor is one a subset of the other, and so their within-study correlations were not obtainable. Therefore, the Riley model was implemented for a bivariate analysis of outcomes 1 and 2 and for a trivariate analysis of all three outcomes, but for the latter it did not converge.

Results from the three univariate and bivariate analyses are shown in Table 2. Eight studies report outcome 1, and four of these report outcomes 2 and 3; thus there is a large proportion of missing data for outcomes 2 and 3. The Riley model applied to outcomes 1 and 2 estimated the overall correlation to be about -0.3, whilst the fully hierarchical bivariate model gave between study correlation estimates of +1 and -1 for outcomes 1 and 2, and outcomes 1 and 3, respectively. Despite the very high correlations and considerable missing data, the summary meta-analysis estimates were similar in univariate and bivariate models, and statistical/clinical conclusions remain the same. The main difference was seen in the confidence interval for the summary intervention effect for outcome 3, which was somewhat narrower from the bivariate analysis of outcomes 1 and 3 than the univariate analysis (Table 2).

Review 3 - Hypnosis for pain management during labour and childbirth [27]

This review compares self-hypnosis or hypnotherapy versus control for outcomes of 1) use of pharmacological pain relief/anaesthesia and 2) spontaneous vaginal birth. Six studies reported outcome 1, and four of these reported outcome 2. There is no structural relationship between these outcomes

so no within-study correlations could be derived. The Riley model converged and the univariate and bivariate estimates of the intervention effects are shown in Table 2. The overall correlation was estimated as -0.44. Meta-analysis estimates and confidence intervals are fairly similar between the univariate and multivariate models, and the latter would not alter the original statistical or clinical conclusions from the univariate analyses (Table 2).

Review 4 - *Intracutaneous or subcutaneous sterile water injection compared with blinded controls for pain management [28].*

This review compares sterile water versus normal saline for outcomes of 1) assisted vaginal birth, and 2) caesarean section. These outcomes are mutually exclusive so within-study correlations were derivable (range -0.07 to -0.14). Seven studies reported outcome 2, of which six reported outcome 1. The between study correlation was estimated to be -1. The confidence intervals for outcome 1 were wider for the bivariate model than for the univariate because the between study standard deviation was estimated to be about twice as large. Estimates for outcome 2 were very similar in bivariate and univariate models, although the between study standard deviation was zero in the univariate model and 0.28 in the bivariate model. Statistical and clinical conclusions would likely remain unchanged between univariate and bivariate results (Table 2).

Review 5 - *Tocolytics for preterm premature rupture of membranes (review) [29]*

This review compares tocolytic versus no tocolytic for outcomes of: 1) perinatal mortality, and 2) neonatal death. Outcome 2 is a subset of outcome 1, and so within-study correlations were derivable. The same seven studies provide data on both outcomes. The number of events for outcomes 2 and 1 in both arms are the same in six of the seven trials generating within-study correlations of +1. The between study correlation is estimated to be almost 1. Univariate and bivariate results are almost identical, and thus statistical and clinical conclusions remain unchanged (Table 2).

Review 6 - *Inhaled analgesia for pain management in labour (review) [30]*

This review compares nitric oxide versus flurane for the outcomes of: 1) satisfaction with pain relief, 2) assisted vaginal birth, and 3) vomiting. Four studies reported outcome 1, these and one further study reported outcome 2, and two studies (one also reporting outcomes 1 and 2, the other just outcome 2) reported outcome 3. There is no structural relationship between these outcomes so no within-study correlations could be derived, and therefore the Riley model was fitted. The model converged for the bivariate analyses of outcomes 1 and 2 and outcomes 2 and 3. Univariate and bivariate analyses gave very similar estimates and confidence intervals for outcomes 1 and 2. For outcome 3 the summary intervention effect estimate was slightly higher and had wider confidence interval from the MVMA analysis. However, in all cases clinical and statistical conclusions would remain unchanged (Table 2).

Review 7 - *Interventions for preventing nausea and vomiting in women undergoing regional anaesthesia for caesarean section [31]*.

The contrast used compares 5-HT₃ antagonists versus placebo for outcomes of 1) intraoperative nausea, 2) intraoperative vomiting, 3) postoperative nausea, and 4) postoperative vomiting. Eight studies reported outcome 1 and seven of these outcome 2. Two of these studies and two other studies reported outcome 3. The same four studies reported outcome 4 along with a study that had reported outcomes 1 and 2. There is no structural relationship between these outcomes so no within-study correlations could be derived, and therefore the Riley model was fitted. All bivariate models converged apart from the model including outcomes 1 and 3. Trivariate models including outcomes 1, 2, and 4, and 1, 3, and 4 also converged (Figure 1). The overall correlation coefficients were generally low to moderate (range -0.07 to 0.60), but high in the bivariate analysis between outcomes 2 and 3 (0.93) and in the between outcomes 1 and 4 in the two trivariate analyses that converged (0.85, 0.98) (0.52 in the bivariate model). For outcomes 1 and 4, univariate and all MVMA models give similar estimates and confidence intervals. However, the bivariate model of outcomes 2 and 3 lead to different

conclusions about the evidence of effect for outcome 2. The estimated MVMA summary OR for outcome 2 was 0.56 (95% CI 0.25, 1.23). This OR is less extreme than the UVMA estimated OR of 0.41 (95% CI 0.17, 0.96). Viewed on the log odds ratio scale, the MVMA estimate is a little more precise (standard error 0.81) than the UVMA estimate (standard error 0.85). There is far less evidence to suggest a beneficial intervention effect, with the CI substantially overlapping 1.

This large shift triggered us to examine whether there was evidence of small-study effects for outcome 2 in the univariate meta-analysis [6]. Outcome specific forest plots are shown in Figure 2. A contour enhanced funnel plot was produced, and this indeed revealed visual evidence of asymmetry for outcome 2 (Figure 3): the smaller studies tended to give more optimistic estimates of the intervention effect for outcome 2 than the larger studies.

The MVMA model including outcomes 1 and 3 with outcome 2 allowed inclusion of results from 3 further studies (outcome 1 provides an additional study and outcome 3 provides an additional two studies) compared to those in the univariate meta-analysis of outcome 2. However, their inclusion shifted the summary estimate for outcome 2 in opposite directions in the bivariate analyses. We therefore approximated a trivariate model of outcomes 1, 2 and 3 to ascertain whether the univariate conclusions about outcome 2 were robust or not. We fitted the Riley model with correlations fixed to the values estimated in the bivariate analyses (0.60 for outcomes 1 and 2; 0.93 for outcomes 2 and 3; 0 for outcomes 1 and 3 where the bivariate analysis failed to converge). This gave a summary OR for outcome 2 of 0.55 (95%CI: 0.24, 1.26).

We conclude that, due to the small study effects and the impact of the correlation in MVMA when additionally incorporating outcomes 1 and especially 3, the results are not robust to model choice. Therefore, results from any model for this outcome should be treated with caution [6].

Discussion

In around 40% of the CPCB reviews screened, at least 1 outcome was reported by 3 or more studies, and MVMA of 2 or more primary maternal or child binary outcomes was prima facie possible in 13%. If the criteria were relaxed to analyse a primary and a secondary outcome this increased to about 60%. We were able to fit the MVMA model for at least one pair of outcomes in seven of the ten contrasts considered (1 contrast from each review). In four of these seven reviews, within-study correlations could be estimated for at least one pair of outcomes. In the remaining reviews we attempted to fit the Riley model. This model has been shown, through simulations, to produce approximately unbiased summary results, appropriate coverage, and increased precision compared to separate univariate analyses [3]. However, it is an approximation, and generally does not perform as well as a fully hierarchical multivariate model that includes within-study correlations. Thus, if within-study correlations are available, the fully hierarchical model is preferred. The model converged for at least one pair of outcomes in three of the six remaining reviews. Thus, convergence and estimation difficulties are common for MVMA models.

Overall, in five of the seven contrasts where an MVMA could be fitted, statistical and clinical conclusions remained unchanged. In the other two contrasts, there was at least one outcome for which results would classically be labelled as "statistically significant" at the 5% level under the univariate model, but not under the multivariate model. The first was for the caesarean section outcome in a comparison of cardiotocography versus intermittent auscultation of fetal heart on admission to labour ward for assessment of fetal wellbeing (review 1). The univariate and multivariate estimates were almost identical but in this case the confidence intervals for the former crossed the null value, but did not for the latter. This says more about the dangers of using the concept of statistical significance than it does the use of MVMA.

The other was for the intraoperative vomiting outcome in review 7, comparing 5-HT3 antagonists versus placebo for preventing nausea and vomiting in women undergoing regional anaesthesia for caesarean section [31]. In this review results from the univariate model suggested good evidence of an

improvement with intervention and that this effect could be quite large. However, when correlated data on the outcome of postoperative nausea was also utilised in the MVMA, results from the Riley model changed the conclusion about the effect on vomiting: now there was very little evidence to conclude an effect with the OR closer to 1 and wide confidence intervals (although a strong clinically important effect could not be ruled out). Assessment of funnel plot asymmetry suggests the univariate meta-analysis may be vulnerable to small study effect bias in outcome 2, possibly due to publication and/or outcome reporting bias. The MVMA partially corrects for bias introduced by this mechanism, by utilising additional studies via the correlated outcome of postoperative nausea [6, 32]. However, conclusions about use of the treatment are unlikely to change due to what is still a large observed central estimate for the effect together with large improvements for other outcomes.

Sometimes CIs were wider after MVMA, compared to UVMA; this is because allowing for correlation may lead to increases in the between-study variance estimates, which then lead to wider CIs. The associated difficulties for borrowing of strength statistics when estimated between-study variances differ between univariate and multivariate models have been discussed previously [33,34]. In such situations, borrowing of strength still occurs, but gain in precision of the pooled estimates is not observed due to the larger variance estimates and borrowing of strength statistics can be negative.

Our review has limitations. Our analysis only considered binary outcomes and we could only fit a fully hierarchical model when within-study correlations could be estimated directly from summary level data. However, a number of other options could have been considered. For example, a deterministic sensitivity analysis could have been performed to examine the impact of different plausible levels of correlation. Alternatively, we could have attempted to obtain individual patient data allowing within-study correlations to be estimated for all outcomes. Finally, the correlations could have been estimated from external evidence and incorporated using a Bayesian framework perhaps using individual patient data from a subset of the trials. This could have been aided by a reparameterisation of the model in terms of patient level correlations between outcomes (rather than contrasts) as suggested by Wei and Higgins [22]. In addition, Bayesian

methods with informative priors could have been considered when the multivariate models (either fully hierarchical or the overall correlation model) failed to converge. However, we deliberately did not consider these alternative methods as they are more complex to implement and would be harder to implement routinely within Cochrane.

A recent paper by Trikalinos et al covered a far broader set of reviews [9] and showed that MVMA usually makes little difference. However, within their review there were examples where univariate and multivariate meta-analyses led to different summary results and conclusions. Having established this, we sought to focus on the clinical area of pregnancy and childbirth, to see if MVMA is more consistently beneficial in an area where multiple and correlated outcomes are routinely encountered. This narrower focus also allowed us to consider the results of each analysis in much more detail and discuss the results with clinicians and epidemiologists who are experts in the area.

MVMA allows joint inferences to be made for intervention effects on multiple outcomes. It is worth noting that even if multivariate and univariate summary results are identical, subsequent post-estimation analyses (e.g. economic models) which include intervention effect estimates for more than one of these outcomes will be incorrect if they do not allow for associations between outcomes. This is because decisions and economic models require joint inferences about (functions of) the multiple outcomes, such as the probability of both outcome 1 and 2 occurring, which requires their correlation to be accounted for [7,35]. So in such cases if multivariate synthesis is feasible it will always be preferable to multiple univariate syntheses.

Further methodological work is required to identify scenarios where MVMA is likely to be of value. A recent paper demonstrated how the amount of borrowing of strength between outcomes can be summarised in a single statistic [33]. However, this requires the MVMA to have been performed. A quick and easy method of determining whether MVMA is likely to be worthwhile before the analysis is performed would be of great value for researchers, many of whom are not statisticians (e.g. in Cochrane). To avoid the possibility of researchers only reporting MVMA when the results move in a certain direction, the criteria for undertaking a MVMA should

be pre-specified in the analysis protocol. Work is needed to consider which outcomes should be included in an MVMA and to assess the sensitivity of results to this choice where necessary. Finally, improved computation methods are required to ensure MVMA models converge more often. One avenue for investigation is the use of Bayesian methods with informative priors for the heterogeneity variances [36].

Conclusions

MVMA is a useful method in principle, as the utilisation of additional information in MVMA will often lead to stronger (more precise) inference and may even, on occasion, change recommendations obtained by univariate meta-analysis. However, our review shows that it is currently not easy to implement, may not converge, and often does not have a big impact on intervention effect estimates or standard errors. Our findings largely concord with a previous empirical evaluation across all Cochrane clinical groups [9]. MVMA should thus not be routinely used in Cochrane meta-analyses. However, it may be useful in certain situations, especially where there are missing data for some outcomes or where post-estimation modelling requires intervention effect estimates for multiple correlated outcomes. Due to new MVMA results identified by our review, clinical conclusions about the effect of 5-HT₃ antagonists on intraoperative vomiting may need to be more cautious than originally thought.

Conflicts of interest

The authors declare that they have no conflicts of interest.

Authors' contributions

MP screened the reviews and drafted the paper. MP and HB extracted data, performed statistical analysis. RR, DJ, IW, JK conceived the idea for the project. JN and SK provided clinical advice. All authors contributed to study design, interpretation of results, and commented on drafts of the paper.

Acknowledgements

The authors would like to thank Dr Frances Kellie for supplying a list of CPCB reviews published during the period of study.

Funding

The work was funded by Medical Research project grant MR/J013595/1. Sara Kenyon was part funded by the NIHR CLAHRC West Midlands+ initiative. Daniel Jackson and Ian White were also supported by the Medical Research Council Unit (Programme number: U105260558). This paper presents independent research and the views expressed are those of the author(s) and not necessarily those of the NHS, the NIHR or the Department of Health.

References

1. Riley, R.D., Higgins, J.P. and Deeks, J.J., 2011. Interpretation of random effects meta-analyses. *Bmj*, 342, p.d549.
2. Nam, I.S., Mengersen, K. and Garthwaite, P., 2003. Multivariate meta-analysis. *Statistics in medicine*, 22(14), pp.2309-2333.
3. Riley, R.D., Thompson, J.R. and Abrams, K.R., 2008. An alternative model for bivariate random-effects meta-analysis when the within-study correlations are unknown. *Biostatistics*, 9(1), pp.172-186.
4. Van Houwelingen, H.C., Arends, L.R. and Stijnen, T., 2002. Advanced methods in meta-analysis: multivariate approach and meta-regression. *Statistics in medicine*, 21(4), pp.589-624..
5. Riley, R.D., Abrams, K.R., Lambert, P.C., Sutton, A.J. and Thompson, J.R., 2007. An evaluation of bivariate random-effects meta-analysis for the joint synthesis of two correlated outcomes. *Statistics in medicine*, 26(1), pp.78-97.
6. Kirkham, J.J., Riley, R.D. and Williamson, P.R., 2012. A multivariate meta-analysis approach for reducing the impact of

outcome reporting bias in systematic reviews. *Statistics in medicine*, 31(20), pp.2179-2195.

7. Riley, R.D., Price, M.J., Jackson, D., Wardle, M., Gueyffier, F., Wang, J., Staessen, J.A. and White, I.R., 2015. Multivariate meta-analysis using individual participant data. *Research synthesis methods*, 6(2), pp.157-174.

8. Thompson, J.R., Minelli, C., Abrams, K.R., Tobin, M.D. and Riley, R.D., 2005. Meta-analysis of genetic studies using Mendelian randomization—a multivariate approach. *Statistics in medicine*, 24(14), pp.2241-2254..

9. Trikalinos, T.A., Hoaglin, D.C. and Schmid, C.H., 2014. An empirical comparison of univariate and multivariate meta-analyses for categorical outcomes. *Statistics in medicine*, 33(9), pp.1441-1459.

10. Berkey, C.S., Hoaglin, D.C., Antczak-Bouckoms, A., Mosteller, F. and Colditz, G.A., 1998. Meta-analysis of multiple outcomes by regression with random effects. *Statistics in medicine*, 17(22), pp.2537-2550.

11. Ishak, K.J., Platt, R.W., Joseph, L. and Hanley, J.A., 2008. Impact of approximating or ignoring within-study covariances in multivariate meta-analyses. *Statistics in Medicine*, 27(5), pp.670-686.

12. Jackson, D., Riley, R. and White, I.R., 2011. Multivariate meta-analysis: Potential and promise. *Statistics in Medicine*, 30(20), pp.2481-2498.

13. Riley, R.D., 2009. Multivariate meta-analysis: the effect of ignoring within-study correlation. *Journal of the Royal Statistical Society: Series A (Statistics in Society)*, 172(4), pp.789-811.

14. Riley, R.D., Gates, S., Neilson, J. and Alfirevic, Z., 2011. Statistical methods can be improved within Cochrane pregnancy and childbirth reviews. *Journal of clinical epidemiology*, 64(6), pp.608-618.

15. Cochrane Library: Pregnancy and Childbirth group, 2017. <http://pregnancy.cochrane.org/>

16. Higgins JPT, Green S (editors). Cochrane Handbook for Systematic Reviews of Interventions Version 5.1.0 [updated

March 2011]. The Cochrane Collaboration, 2011. Available from <http://handbook.cochrane.org>.

17. Cox DR, Snell EJ. Analysis of Binary Data. New York: Chapman & Hall/CRC. 2nd Edition, 1989.
18. DerSimonian, R. and Laird, N., 1986. Meta-analysis in clinical trials. *Controlled clinical trials*, 7(3), pp.177-188.
19. Higgins, J., Thompson, S.G. and Spiegelhalter, D.J., 2009. A re-evaluation of random-effects meta-analysis. *Journal of the Royal Statistical Society: Series A (Statistics in Society)*, 172(1), pp.137-159.
20. Trikalinos, T.A. and Olkin, I., 2008. A method for the meta-analysis of mutually exclusive binary outcomes. *Statistics in medicine*, 27(21), pp.4279-4300.
- 21.
22. Wei, Y. and Higgins, J., 2013. Estimating within-study covariances in multivariate meta-analysis with multiple outcomes. *Statistics in Medicine*, 32(7), pp.1191-1205.
23. White, I.R., 2009. Multivariate random-effects meta-analysis. *Stata Journal*, 9(1), p.40.
24. White, I.R., 2011. Multivariate random-effects meta-regression: updates to mvmeta. *Stata Journal*, 11(2), p.255.
25. Devane, D., Lalor, J.G., Daly, S., McGuire, W. and Smith, V., 2012. Cardiotocography versus intermittent auscultation of fetal heart on admission to labour ward for assessment of fetal wellbeing. *The Cochrane Library*.
26. Alfirevic, Z., Stampalija, T., Roberts, D. and Jorgensen, A.L., 2012. Cervical stitch (cerclage) for preventing preterm birth in singleton pregnancy. *The Cochrane Library*.
27. Madden, K., Middleton, P., Cyna, A.M., Matthewson, M. and Jones, L., 2012. Hypnosis for pain management during labour and childbirth. *The Cochrane Library*.
28. Derry, S., Straube, S., Moore, R.A., Hancock, H. and Collins, S.L., 2012. Intracutaneous or subcutaneous sterile water injection compared with blinded controls for pain management in labour. *The Cochrane Library*.

29. Mackeen, A.D., Seibel-Seamon, J., Grimes-Dennis, J., Baxter, J.K. and Berghella, V., 2011. Tocolytics for preterm premature rupture of membranes. *The Cochrane Library*.
30. Klomp, T., van Poppel, M., Jones, L., Lazet, J., Di Nisio, M. and Lagro-Janssen, A.L., 2012. Inhaled analgesia for pain management in labour. *The Cochrane Library*.
31. Griffiths, J.D., Gyte, G.M., Paranjothy, S., Brown, H.C., Broughton, H.K. and Thomas, J., 2012. Interventions for preventing nausea and vomiting in women undergoing regional anaesthesia for caesarean section. *The Cochrane Library*.
32. Frosi, G., Riley, R.D., Williamson, P.R. and Kirkham, J.J., 2015. Multivariate meta-analysis helps examine the impact of outcome reporting bias in Cochrane rheumatoid arthritis reviews. *Journal of clinical epidemiology*, 68(5), pp.542-550.
33. Jackson, D., White, I.R., Price, M., Copas, J. and Riley, R.D., 2015. Borrowing of strength and study weights in multivariate and network meta-analysis. *Statistical methods in medical research*, p.0962280215611702.
34. John B Copas, Dan Jackson, Ian R White, and Richard D Riley. The role of secondary outcomes in multivariate meta-analysis. *Journal of the Royal Statistical Society: Series C (Applied Statistics)*, 67(5):1177-1205, 2018.
35. Jackson D, Bujkiewicz S, Law M, Riley R, White I. A matrix-based method of moments for fitting multivariate network meta-analysis models with multiple outcomes and random inconsistency effects. *Biometrics*: 74, 548-556, 2018. <https://doi.org/10.1111/biom.12762>
36. Rhodes KM, Turner RM, White IR, Jackson D, Spiegelhalter DJ, Higgins JPT (2016). Implementing informative priors for heterogeneity in meta-analysis using meta-regression and pseudo data. *Statistics in Medicine* 35: 5495-5511.

Table 1. Nested criterion for inclusion (number remaining reports the number of reviews remaining after this criterion has been assessed) :

Criteria	Number of reviews meeting criteria
Most recent Cochrane Pregnancy and childbirth reviews published between January 2011 and February 2013	80
Reviews contained at least 3 studies in total	46
At least 1 outcome was reported by 3 or more studies	31
At least 1 binary outcome was reported by 3 or more studies	29
At least 1 binary primary outcome was reported by 3 or more studies	27
At least 2 (including 1+ primary) binary outcomes, both maternal or both neonatal, were reported by 3 or more studies	18
At least 2 binary primary outcomes, both maternal or both neonatal, were reported by 3 or more (not necessarily the same) studies	10
MVMA models converged for at least one pair of outcomes	7

Note: 21 studies included a contrast with at least 2 mother or 2 neonatal binary (either primary or secondary) outcomes reported by 3 or more (not necessarily the same) studies.

Accepted

Table 2. Univariate and bivariate summary odds ratio estimates, 95% confidence intervals and between study standard deviation estimates for the pooled log odds ratio for each outcome in each review

Outcome (number of studies)	Summary OR estimates (95% CI)								
	Univariate ¹	Bivariate (1,2) ¹	Bivariate (1,3) ¹	Bivariate (2,3) ¹	Bivariate (1,4) ¹	Bivariate (2,4) ¹	Bivariate (3,4) ¹	Trivariate (1,2,4) ¹	Trivariate (1,3,4) ¹
Review 1: Cardiotocography versus intermittent auscultation of fetal heart on admission to labour ward for assessment of fetal wellbeing [25]									
1) Caesarean birth (4)	1.21 (1.00,1.46)	1.23 (0.99,1.52)	-	-	-	-	-	-	-
	0.00	0.08							
2) Instrumental vaginal birth (4)	1.12 (0.95,1.31)	1.12 (0.96,1.31)	-	-	-	-	-	-	-
	0.09	0.09							
Review 2 - Cervical stitch (cerclage) for preventing preterm birth in singleton pregnancy [26]									
1) All perinatal losses (8)	0.77 (0.59,1.02)	0.77 (0.59,1.02)	0.77 (0.59,1.02)	-	-	-	-	-	-
	0.00	0.00	0.00						
2) Serious neonatal morbidity (4)	0.94 (0.59,1.49)	0.94 (0.60,1.48)	-	0.91 (0.58,1.42)	-	-	-	-	-
	0.00	0.04		0.03					
3) Perinatal deaths or serious neonatal morbidity (4)	0.78 (0.53,1.14)	-	0.77 (0.57,1.04)	0.81 (0.53,1.25)	-	-	-	-	-
	0.06		0.00	0.22					
Review 3 – Hypnosis for pain management during labour and childbirth [27]									
1) Use of pharmacological pain relief (6)	0.35 (0.14,0.87)	0.37 (0.15,0.89)	-	-	-	-	-	-	-
	0.98	0.93							
2) Spontaneous vaginal birth (4)	2.91 (0.63,13.5)	3.23 (0.72,14.6)	-	-	-	-	-	-	-
	1.23	1.10							

Review 4 – Intracutaneous or subcutaneous sterile water injection compared with blinded controls for pain management [28]

1) Assisted vaginal birth (6)	1.28 (0.58,2.83)	1.16 (0.51,2.60)	-	-	-	-	-	-	-
	0.19	0.34							
2) Caesarean section (7)	0.55 (0.29,1.05)	0.58 (0.28,1.19)	-	-	-	-	-	-	-
	0.00	0.28							

Review 5 – Tocolytics for preterm premature rupture of membranes [29]

1) Perinatal mortality (7)	1.71 (0.78,3.75)	1.72 (0.78,3.76)	-	-	-	-	-	-	-
	0.00	0.00							
2) Neonatal death (7)	1.71 (0.75,3.89)	1.72 (0.78,3.77)	-	-	-	-	-	-	-
	0.00	0.00							

Review 6 – Inhaled analgesia for pain management in labour [30]

1) Satisfaction with pain relief (4)	0.63 (0.38,1.06)	0.63 (0.37,1.07)	FC	-	-	-	-	-	-
	0.00	0.00							
2) Assisted vaginal birth (5)	0.58 (0.26,1.29)	0.59 (0.25,1.42)	-	0.58 (0.25,1.38)	-	-	-	-	-
	0.64	0.65		0.66					
3) Vomiting (3)	2.19 (0.66,7.24)	-	FC	2.55 (0.41,16.0)	-	-	-	-	-
	0.00			0.01					

Review 7 - Interventions for preventing nausea and vomiting in women undergoing regional anaesthesia for caesarean section [31].

1) Nausea – intraoperative (8)	0.39 (0.20,0.76)	0.38 (0.19,0.76)	FC	-	0.39 (0.19,0.78)	-	-	0.38 (0.19,0.78)	0.38 (0.16,0.91)
	0.72	0.76			0.77			0.85	0.98
2) Vomiting–intraoperative (7)	0.41 (0.17,0.96)	0.36 (0.14,0.94)	-	0.56 (0.25,1.23)	-	0.41 (0.18,0.98)	-	0.37 (0.15,0.92)	

	0.85	0.99		0.81		0.86		0.86	
3) Nausea–postoperative (4)	0.24		FC	0.24			0.24		0.31
	(0.06,0.87)	-		(0.10,0.58)	-	-	(0.06,0.86)	-	(0.13,0.74)
	1.16			0.76			1.15		0.72
4) Vomiting–postoperative	0.30				0.30	0.29	0.30	0.37	0.29
(5)	(0.18,0.48)	-	-	-	(0.19,0.48)	(0.17,0.50)	(0.18,0.48)	(0.21,0.63)	(0.13,0.64)
	0.00				0.00	0.00	0.00	0.23	0.83

¹Summary estimates of the odds ratio, (95 % confidence intervals), between study standard deviation estimates for the pooled log odds ratio.

Note: All remaining tri- and 4-variate models failed to converge

FC = Failed to Converge,

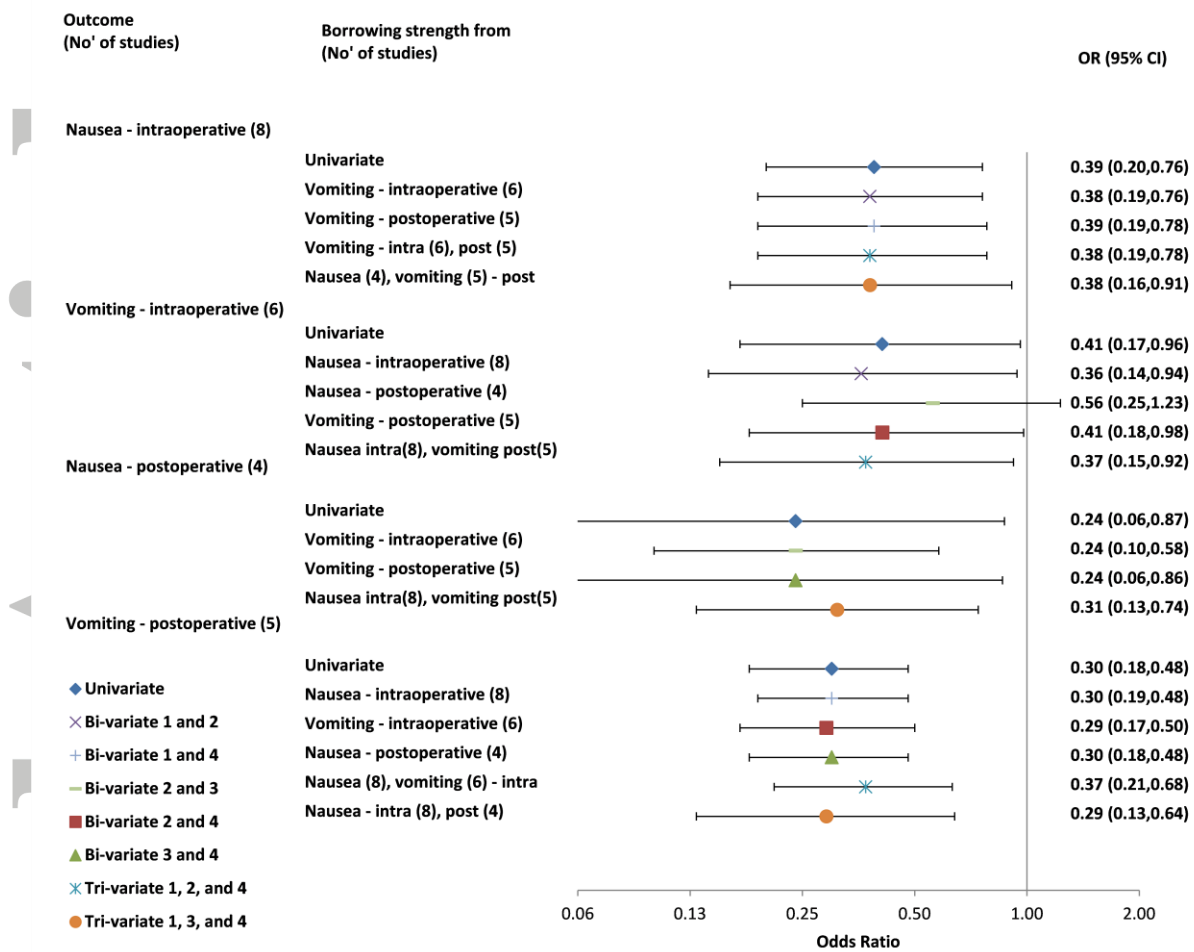
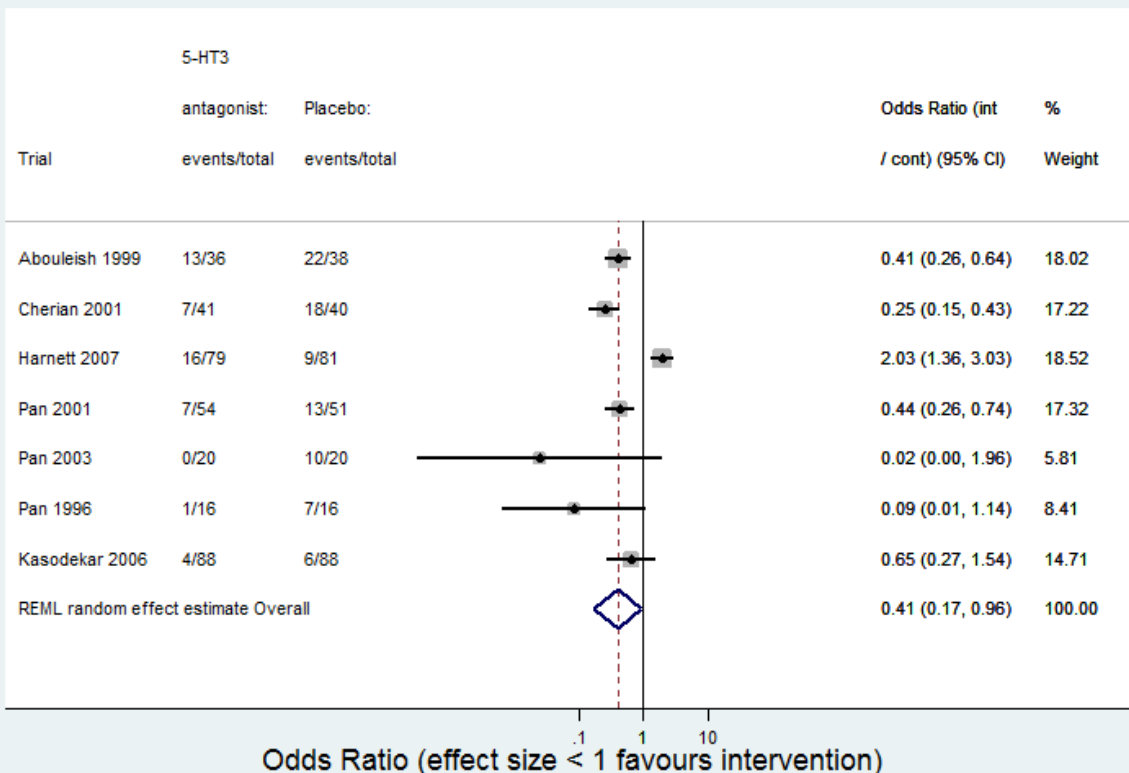
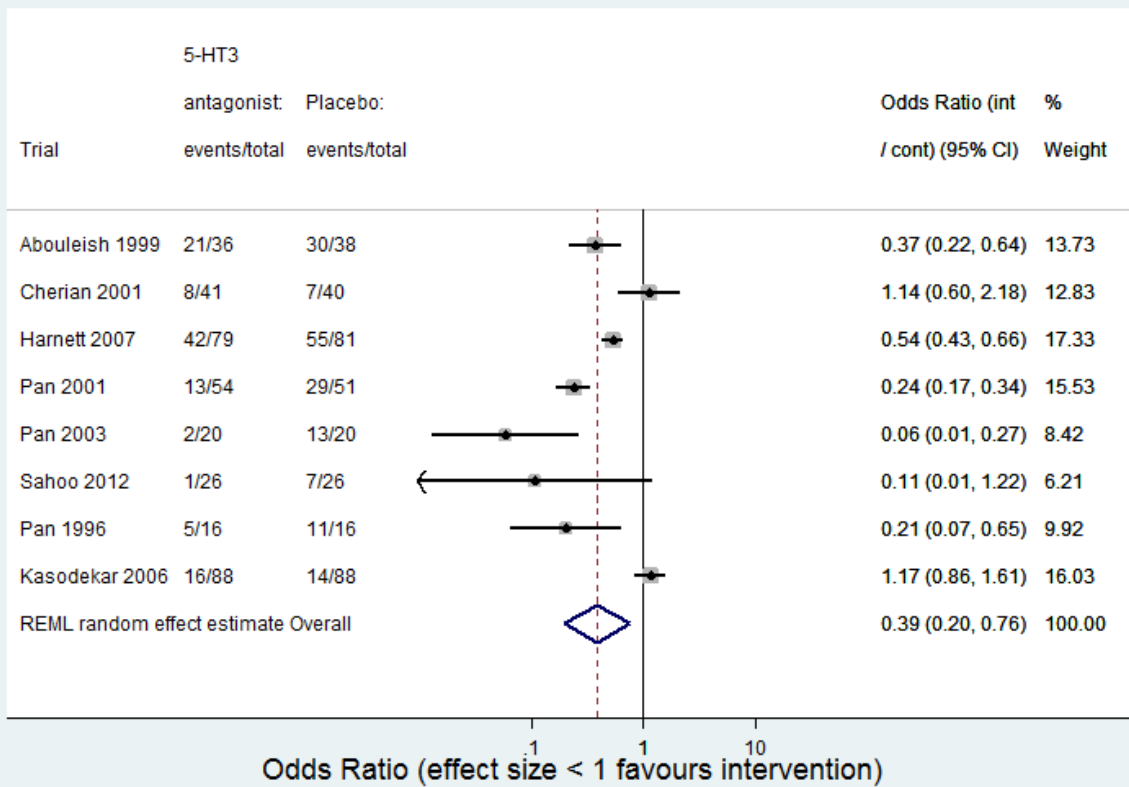


Figure 1. Univariate and multivariate meta-analysis results for all outcomes from review 7: Interventions for preventing nausea and vomiting in women undergoing regional anaesthesia for caesarean section [31].

Accept



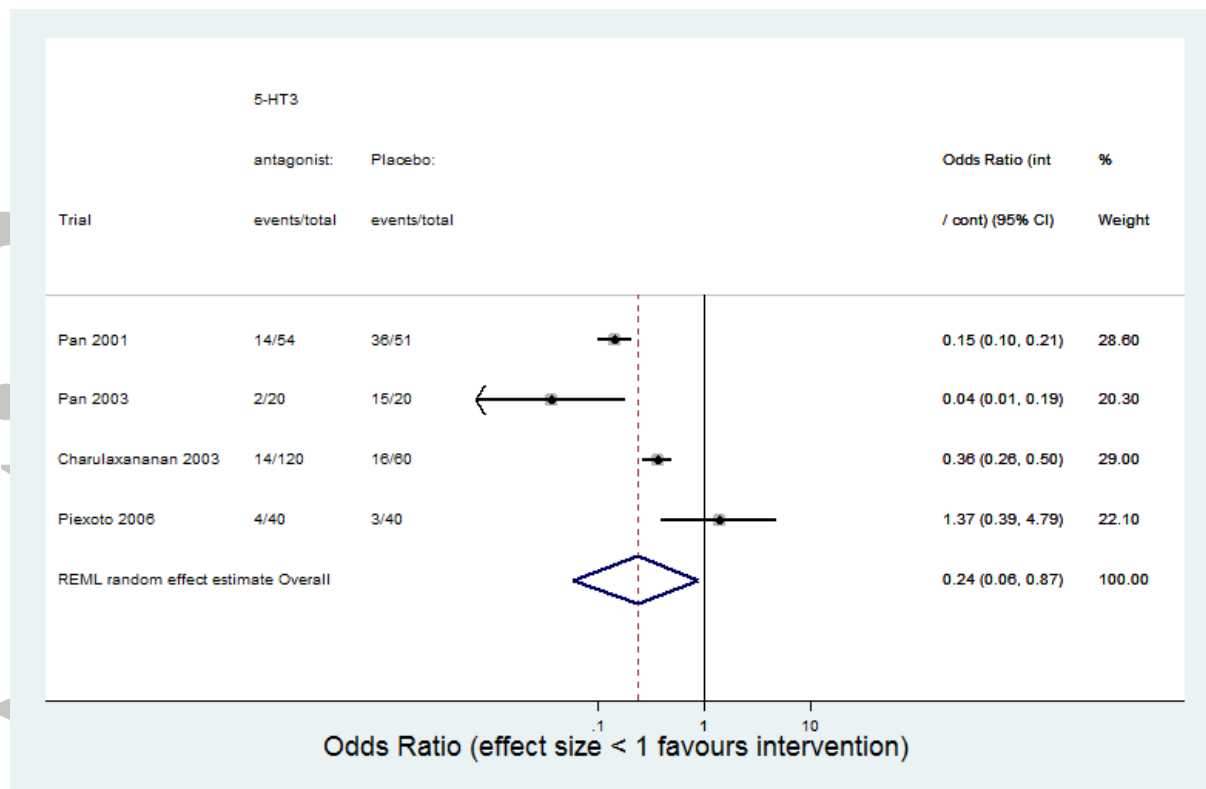


Figure 2. Outcome specific forest plots for review 7: Interventions for preventing nausea and vomiting in women undergoing regional anaesthesia for caesarean section [31]

- a. Outcome 1: Nausea - Intraoperative
- b. Outcome 2: Vomiting-intraoperative
- c. Outcome 3: Nausea-postoperative

Accepted

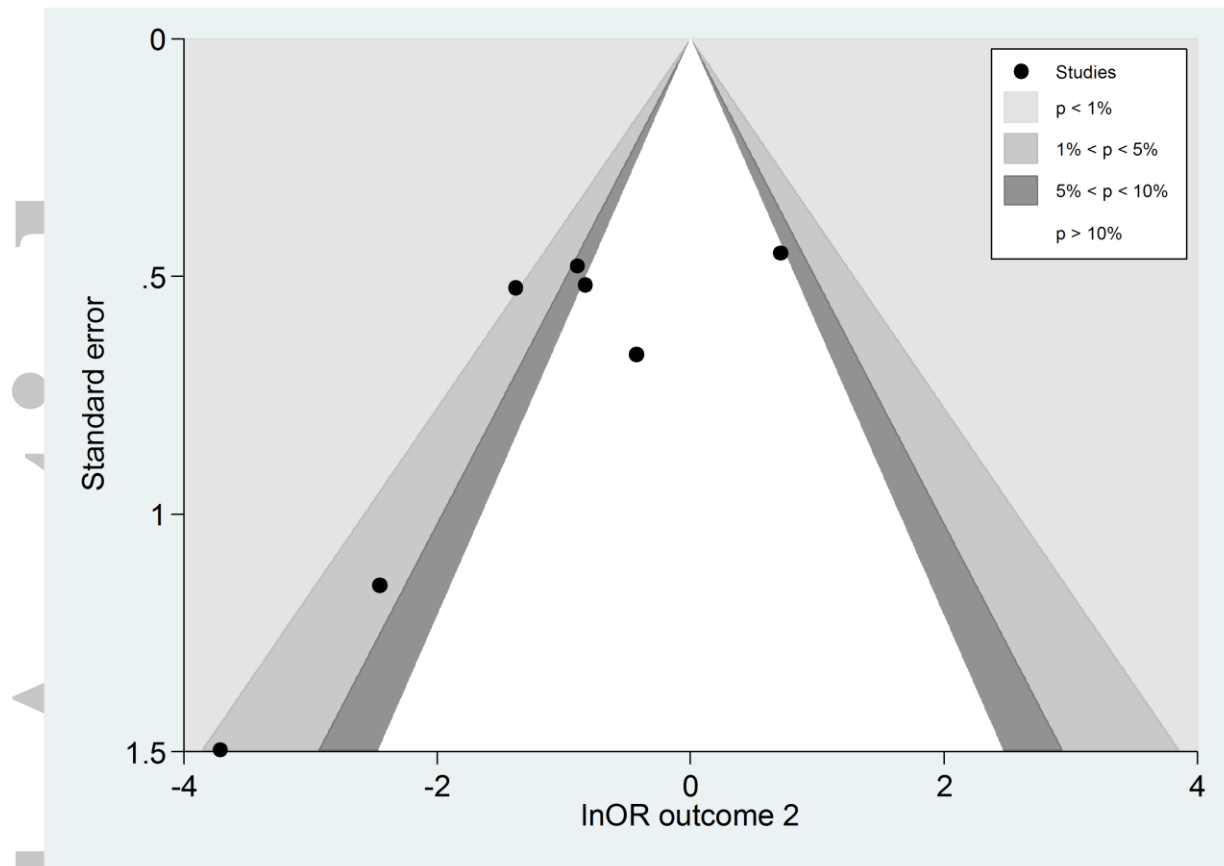


Figure 3: Contour-enhanced funnel plot for examining small study effects in the univariate meta-analysis for outcome 2 (Vomiting-intraoperative) in review 7: Interventions for preventing nausea and vomiting in women undergoing regional anaesthesia for caesarean section [31].

Accepted