

REVIEW

Open Access

Born Too Soon: Care for the preterm baby

Joy E Lawn^{*1,2}, Ruth Davidge^{3,4,5}, Vinod K Paul⁶, Severin von Xylander⁷, Joseph de Graft Johnson⁸, Anthony Costello⁹, Mary V Kinney¹⁰, Joel Segre¹¹ and Liz Molyneux¹²

Abstract

As part of a supplement entitled “Born Too Soon”, this paper focuses on care of the preterm newborn. An estimated 15 million babies are born preterm, and the survival gap between those born in high and low income countries is widening, with one million deaths a year due to direct complications of preterm birth, and around one million more where preterm birth is a risk factor, especially amongst those who are also growth restricted. Most premature babies (>80%) are between 32 and 37 weeks of gestation, and many die needlessly for lack of simple care. We outline a series of packages of care that build on essential care for every newborn comprising support for immediate and exclusive breastfeeding, thermal care, and hygienic cord and skin care. For babies who do not breathe at birth, rapid neonatal resuscitation is crucial. Extra care for small babies, including Kangaroo Mother Care, and feeding support, can halve mortality in babies weighing <2000 g. Case management of newborns with signs of infection, safe oxygen management and supportive care for those with respiratory complications, and care for those with significant jaundice are all critical, and are especially dependent on competent nursing care. Neonatal intensive care units in high income settings are de-intensifying care, for example increasing use of continuous positive airway pressure (CPAP) and this makes comprehensive preterm care more transferable. For health systems in low and middle income settings with increasing facility births, district hospitals are the key frontier for improving obstetric and neonatal care, and some large scale programmes now include specific newborn care strategies. However there are still around 50 million births outside facilities, hence home visits for mothers and newborns, as well as women’s groups are crucial for reaching these families, often the poorest. A fundamental challenge is improving programmatic tracking data for coverage and quality, and measuring disability-free survival. The power of parent’s voices has been important in high-income countries in bringing attention to preterm newborns, but is still missing from the most affected countries.

Declaration This article is part of a supplement jointly funded by Save the Children’s Saving Newborn Lives programme through a grant from The Bill & Melinda Gates Foundation and March of Dimes Foundation and published in collaboration with the Partnership for Maternal, Newborn and Child Health and the World Health Organization (WHO). The original article was published in PDF format in the WHO Report “Born Too Soon: the global action report on preterm birth” (ISBN 978 92 4 150343 30), which involved collaboration from more than 50 organizations. The article has been reformatted for journal publication and has undergone peer review according to *Reproductive Health’s* standard process for supplements and may feature some variations in content when compared to the original report. This co-publication makes the article available to the community in a full-text format.

Preterm baby survival and care round the world

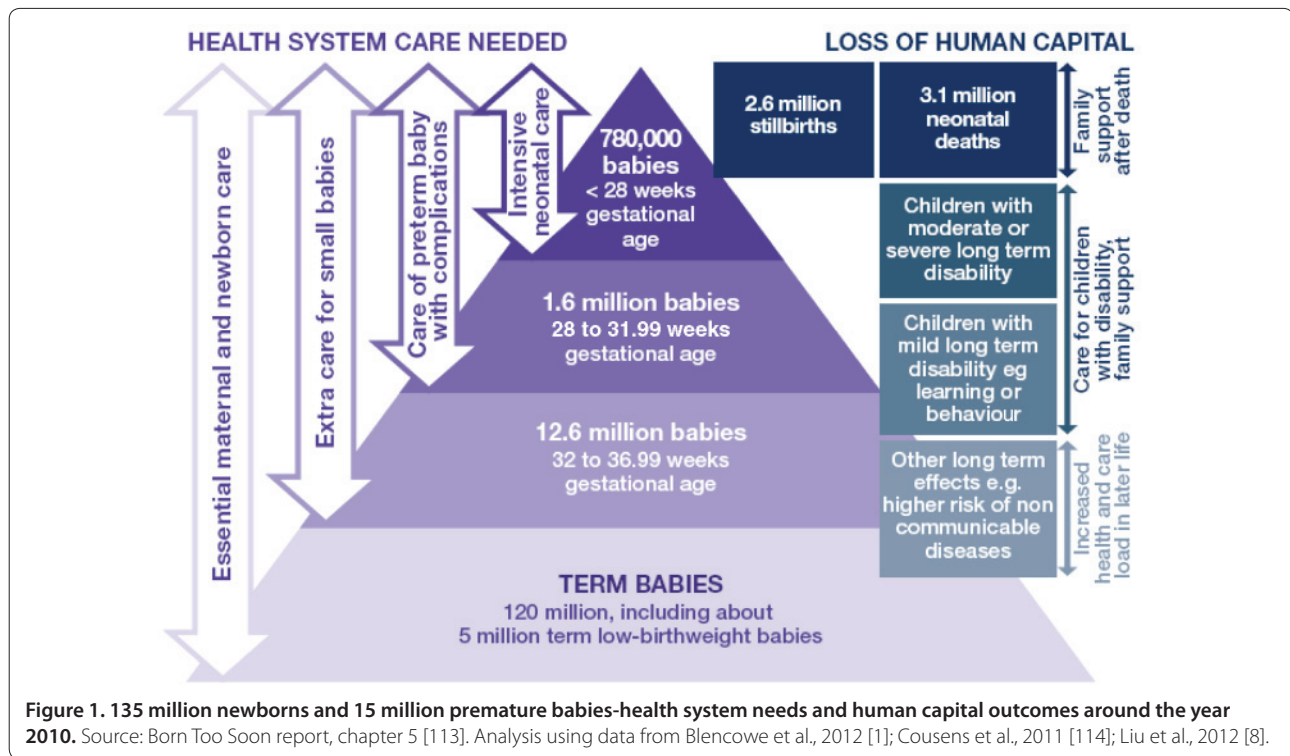
Each year 15 million babies are born preterm and their survival chances vary dramatically around the world [1]. For the 1.2 million babies born in high income countries, increasing complexity of neonatal intensive care over the last quarter of the 20th century has changed the chances of survival at lower gestational ages. Middle-income and

emerging economies have around 3.8 million preterm babies each year, and whilst some countries such as Turkey and Sri Lanka have halved deaths for preterm babies within a decade, other countries have made minimal progress [2]. South Asia and sub-Saharan Africa account for almost two-thirds of the world’s preterm babies and over three-quarters of the world’s newborn deaths due to preterm birth complications [1]. Worldwide, almost half of preterm babies are born at home, and even for those born in facilities, essential newborn care is often lacking.

*Correspondence: joylawn@yahoo.co.uk

¹MARCH, London School Hygiene & Tropical Medicine, UK

Full list of author information is available at the end of the article



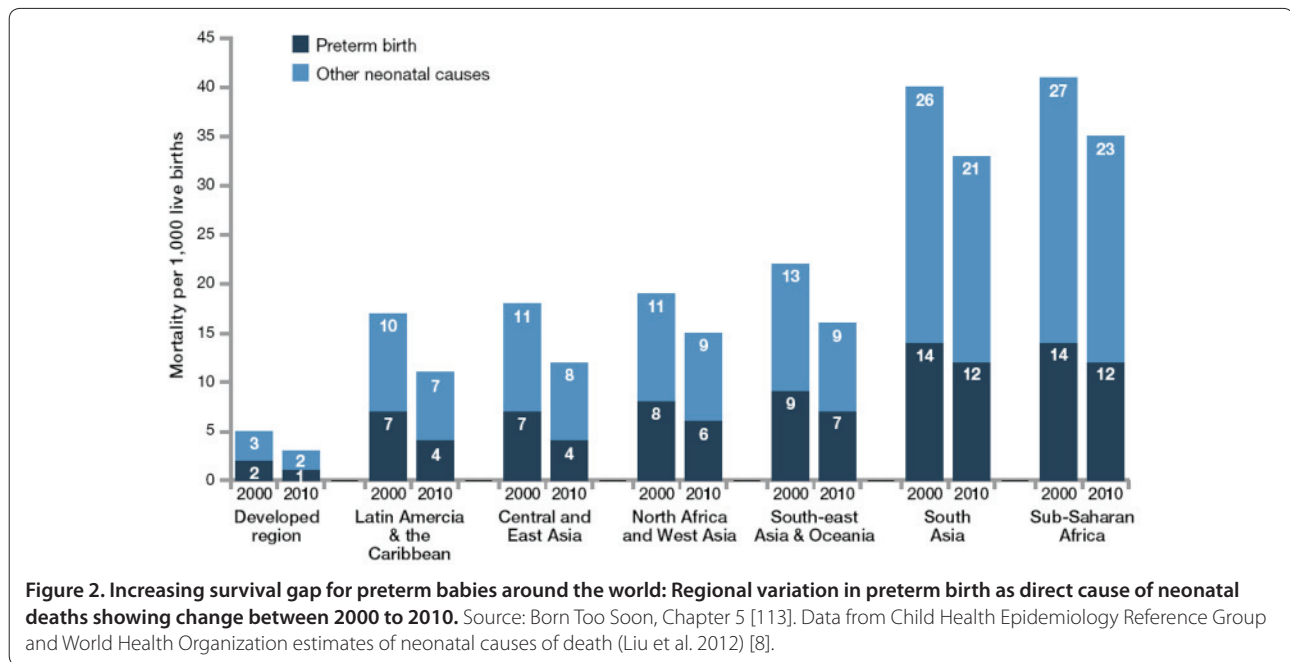
This paper is the fifth in a supplement entitled “Born Too Soon”. Previous papers in this series have outlined the policy context [3], epidemiology [4], and interventions preconceptually [5] and during pregnancy [6]. In this paper we focus on care of preterm newborns.

We apply the simple WHO definition of all babies born at less than 37 weeks gestation, noting that this includes both provider initiated and spontaneous preterm birth, and many varying causations [4]. Most premature babies (>80%) are born between 32 and 37 weeks of gestation (moderate/late preterm), and many die needlessly for lack of simple, essential care such as warmth and feeding support (Figure 1). About 10% of preterm babies are born 28 to <32 weeks gestation, and in low-income countries more than half of those will die but many could be saved with feasible care, not including intensive care such as ventilation (Figure 1). For babies born before 28 weeks gestation, intensive care would be needed to save most of these, but it is important to realise that these are the minority – about 5% of premature babies. Yet in many countries, families and health care providers still perceive the deaths of any premature baby as inevitable.

In contrast, in high-income settings neonatal survival is extending to lower and lower extremes of gestational age. In 1990, few babies under 25 weeks gestation were surviving; yet by 2010, 95% of preterm babies under 28 weeks survived, and more than half of the babies born before 25 weeks gestation survived, although the latter have a higher risk of impairment [7].

Over the last few decades the survival gap for babies born in high-income countries and babies born in the poorest countries has widened dramatically, even though the pace of survival gains in high-income countries has slowed reaching the extremes of preterm gestation. For example, North America is still achieving an average annual reduction of more than 5% per year for preterm-specific mortality, yet Africa on average is improving mortality rates for preterm babies by only 1% a year (Figure 2). Those countries with the highest risk of death and the most feasible deaths to avert are still experiencing the least progress. The history of neonatal care in high-income countries shows that the major reduction in deaths occurred before neonatal intensive care was established. Yet the risk of a neonatal death due to complications of preterm birth is about twelve times higher for an African baby than for a European baby [8] (Figure 2).

An important but under-recognised issue for all countries is that of disability for survivors of preterm birth [1,9]. In the early days of neonatal intensive care, disabilities were common amongst survivors, ranging from some school learning disability through to severe cerebral palsy. Impairment outcomes have a heavy toll on families and on the health system. Indeed a recent report estimated that the average baby born 28 to 31 weeks gestation in the United States costs \$95,000 in medical care in the first year alone [10]. Overtime the pattern of impairment from preterm birth in high-income countries



has shifted. The focus of intensive care has shifted to extremely premature babies (less than 28 weeks), or “micro preemies,” as this smaller subset of babies has increased risk and severity of impairment [7,11]. With the scale up of neonatal intensive care, a focus on follow up and family support is critical.

Recent data show that even late and moderate preterm (LAMP, or 32 to <37 weeks gestation) is also associated with significant adverse effects, including those on school learning, prompting increasing debate regarding avoidable causes of moderate preterm birth such as high caesarean birth rates [12,13]. These long-term effects on society and on the health system as well as more evidence of the link with non-communicable diseases in later adult life [3] underline that the importance of addressing preterm birth is beyond survival alone.

Over the last four decades with an increasing focus on evidence-based care for premature babies in high-income countries, the risk of long-term impairments is reducing. Neonatal intensive care has also become less interventionist and hence some aspects are also potentially more feasible to adapt to lower-income settings. There have been notable advances in quality of intensive care for premature babies.

Widespread use of antenatal corticosteroids in high- and some middle-income countries for mothers at gestation of 32 weeks or less, following multiple RCTs and the National Institute of Health consensus statement [14], ensuring that babies are less likely to develop respiratory distress syndrome (RDS), or have less severe RDS [15-17]. All trials have been conducted in settings where intensive or special care for preterm infants is available.

While the effect has biological plausibility, the magnitude of effect in low-income countries without intensive care is uncertain, although a meta-analysis for middle-income country trials showed a greater effect than in high-income settings. An NIH sponsored trial in low- and middle-income settings is ongoing.

A shift to less intensive ventilator pressures and increasing use of continuous positive airway pressure (CPAP), now often the respiratory support method of choice [18].

Detailed quality of care protocols and “job aids” for almost every aspect of care have improved quality and also shifted more care to the responsibility of skilled neonatal nurses, particularly with respect to addressing infection prevention, feeding support, use of intravenous fluids, and safe oxygen use with careful tracking of oxygen saturation levels and follow-up services [19].

Deliberate attention to baby friendly care, reducing pain and over stimulation and more family friendly care, including family rooms linked to neonatal units and increased access for parents to their babies while in neonatal care units [20].

In low- and middle-income countries, there are limited comparable data on long-term outcomes after preterm birth [21,22]. However, small studies suggest a high risk of moderate or severe neurodevelopmental impairment and an urgent need to improve awareness, data and care. Retinopathy of prematurity caused an epidemic of blindness for preterm babies in Europe and North America 50 years ago, especially after high or unmonitored use of oxygen. Data from Latin America show increasing rates of retinopathy of prematurity [23,24] and it is likely that

Table 1. Life-saving essential and extra newborn care

Risk for all babies, especially those who are preterm	Essential care for all babies	Extra care for preterm babies
<i>Hypothermia = low body temperature</i> (increased risk of infections, mortality and for preterm babies increased risk of RDS)	<i>Thermal care</i> Drying, warming, skin-to-skin and delayed bathing	<i>Extra thermal care</i> Kangaroo Mother Care, baby hats, blankets, overhead heaters, incubators
<i>Cord and skin infections, neonatal sepsis</i>	<i>Hygienic cord and skin care at birth and home care practices</i> Hand washing and other hygiene Delayed cord clamping Consider chlorohexifine	<i>Extra attention to infection prevention and skin care</i> Consider chlorohexidine and emollients
<i>Hypoglycemia = low blood sugar</i> (Increased risk of impairment or death)	<i>Early and exclusive breastfeeding</i>	<i>Extra support for breastfeeding</i> e.g. expressing and cup or tube feeding, supplemented breast milk if indication Lack of breast milk is a risk factor for necrotising enterocolitis in preterm babies
<i>Hypoxia = low oxygen levels</i> (Increased risk of impairment or death for preterm babies, higher risk of RDS and intracranial bleeding)	<i>Neonatal resuscitation if not breathing at birth</i> Bag-and-mask resuscitation with room air is sufficient for >99% of babies not breathing at birth	<i>Safe oxygen use</i> Monitored oxygen use e.g. in head box or with nasal cannula, routine use of pulse oximeters

Source: : Born Too Soon, Chapter 5 [113].

areas without data such as Southeast Asia are also experiencing an increase, recreating an avoidable problem. As neonatal care is improved and complexity increases, monitoring quality of care and tracking impairment outcomes are critical and should not be considered an optional extra in low-resource settings. Urgent attention is needed to develop standard, simpler measures of such impairments, to integrate these metrics into other measurement systems, and to provide support for such babies and their families [21].

Priority packages and evidence-based interventions

All newborns are vulnerable given that birth and the following few days hold the highest concentrated risk of death of any time in the human lifespan. Every baby needs essential newborn care, ideally with their mothers providing warmth, breastfeeding and a clean environment. Premature babies are especially vulnerable to temperature instability, feeding difficulties, low blood sugar, infections, and breathing difficulties (Table 1). There are also complications that specifically affect premature babies (Figure 3).

Saving lives and preventing disability from preterm birth can be achieved with a range of evidence-based care increasing in complexity and ranging from simple care such as warmth and breastfeeding up to full intensive care (Table 2). The packaged interventions in this chapter are adapted from a recent extensive evidence review and a consensus report, “Essential Interventions Commodities and Guidelines for Reproductive Maternal, Newborn and Child Health” [25].

Recognition of small babies and distinguishing which ones are preterm are essential first steps in prioritising

care for the highest risk babies. First trimester ultrasound assessment is the most accurate measure, but this is not available for most of the world’s pregnant women [4]. Other options include Last Menstrual Period, using birthweight as a surrogate or assessment of the baby to estimate gestational age (e.g., Dubowitz or other simpler scoring methods). The highest-risk babies are those that are both preterm and growth restricted.

Package 1: Essential and extra newborn care

Care at birth from a skilled provider is crucial for both women and babies and all providers should have the competencies to care for both mother and baby, ensuring that mother and baby are not separated unnecessarily, promoting warmth, early and exclusive breastfeeding, cleanliness and resuscitation if required [26]. These practices are essential for full-term babies, but for premature babies, missing or delaying any of this care can rapidly lead to deterioration and death. For all babies at birth, minutes count.

Thermal care

Simple methods to maintain a baby’s temperature after birth include drying and wrapping, increased environmental temperature, covering the baby’s head (e.g., with a knitted cap), skin-to-skin contact with the mother and covering both with a blanket [27,28]. Delaying the first bath is promoted, but there is a lack of evidence as to how long to delay, especially if the bath can be warm and in a warm room [29]. Kangaroo Mother Care (KMC) has proven effect on mortality for babies <2,000 g and is discussed below. Equipment-dependent warming techniques include warming pads or warm cots, and radiant heaters or incubators; however, these require additional

- Feeding difficulties since the coordinated suck and swallow process only starts at 34 weeks gestation. Preterm babies need help to feed and are more likely to aspirate.
- Severe infections are more common, and premature babies are at higher risk of dying once they get an infection. The majority of babies who die from neonatal sepsis are preterm.
- Respiratory Distress Syndrome due to lung immaturity and lack of surfactant in the alveoli, resulting in collapsing lungs that take extra pressure to inflate. Below 32 weeks gestation, the majority of babies develop RDS, although this risk can be reduced by antenatal corticosteroids injections to women at risk or preterm labour, or in preterm labour. In addition, antenatal corticosteroids have a significant effect in reducing intra ventricular haemorrhage and other morbidities although longer term metabolic follow up studies are important in all contexts. Additional questions relate to long term follow up of babies now surviving to assess for late onset metabolic changes.
- Jaundice is more common in premature babies since the immature liver cannot easily metabolise bilirubin, and once jaundiced, the preterm baby's brain is at higher risk since their blood-brain barrier is less well developed to protect the brain.
- Brain injury in preterm babies is most commonly intraventricular haemorrhage, occurring in the first few days after birth in about 1 in 5 babies under 2,000 g and is often linked to severity of RDS and hypotension. Less commonly, preterm babies may have hypoxic brain injury with white matter loss which differs from that seen in the brain of term babies [131].
- Necrotizing enterocolitis is a rarer condition affecting the intestinal wall of very premature babies, with a typical X-ray image of gas in the bowel wall. Formula feeding increases the risk tenfold compared to babies who are fed breast milk alone [132].
- Retinopathy of prematurity due to abnormal proliferation of the blood vessels around the retina of the eye, which is more severe if the baby is given too high levels of oxygen.
- Anemia of prematurity, which often becomes apparent at a few weeks of age due to delay in producing red blood cells as the bone marrow is immature.

Figure 3. Preterm babies face specific risks. Source: Born Too Soon, Chapter 5 [113].

nursing skills and careful monitoring [28]. Sleeping bags lack evidence for comparison with skin-to-skin care or of large-scale implementation. There are several trials suggesting benefit for plastic wrappings but, to date, these have been tested only for extremely premature babies in neonatal intensive care units [30].

Feeding support

At the start of the 20th century, Pierre Budin, a French obstetrician, led the world in focusing on the care of “weaklings,” as premature babies were known then. He promoted simple care - warmth, breastfeeding and cleanliness. However, by the middle of the 20th century, formula milk was widely used and the standard text books said that premature babies should not be fed for the first few days. After 1960, the resurgence of attention and support for feeding of premature babies was an important factor in reducing deaths before the advent of intensive care [31].

Early initiation of breastfeeding within one hour after birth has been shown to reduce neonatal mortality [32-34]. Premature babies benefit from breast milk nutritionally, immunologically and developmentally [35]. The short-term and long-term benefits compared with formula feeding are well established with lower incidence of infection and necrotising enterocolitis and improved neuro-developmental outcome [36,37]. Most premature babies require extra support for feeding with a cup,

spoon or another device such as gastric tubes (either oral or nasal) [38,39]. In addition, the mother requires support for expressing milk. Where this is not possible, donor milk is recommended [38]. In populations with high HIV prevalence, feasible solutions for pasteurisation are critical. Milk-banking services are common in many countries and must be monitored for quality and infection prevention. Extremely preterm babies under about 1,000 g and babies who are very unwell may require intravenous fluids or even total parenteral nutrition, but this requires meticulous attention to volume and flow rates. Routine supplementation of human milk given to premature babies is not currently recommended by WHO. WHO does recommend supplementation with vitamin D, calcium and phosphorus and iron for very low birthweight babies [38] and vitamin K at birth for low birthweight babies [40,41].

Infection prevention

Clean birth practices reduce maternal and neonatal mortality and morbidity from infection-related causes, including tetanus [42]. Premature babies have a higher risk of bacterial sepsis. Hand cleansing is especially critical in neonatal care units. However basic hygienic practices such as hand washing and maintaining a clean environment are well known but poorly done. Unnecessary separation from the mother or sharing of incubators should be avoided as these practices increase spread of

Table 2. Priority evidence-based packages and interventions for preterm babies

	Grade
Essential Newborn Care For All Babies	
Thermal care (drying, warming, skin-to-skin and delayed bathing) Hygienic cord and skin care Early initiation, exclusive breastfeeding	Evidence: Low to moderate Recommendation: Strong
Neonatal resuscitation for babies who do not breathe at birth	Evidence: Low to moderate Recommendation: Strong
Extra Care For Small Babies	
Kangaroo Mother Care for small babies (birthweight <2,000 g) Extra support for feeding	Evidence: Moderate to high Recommendation: Strong
Care For Preterm Babies With Complications	
Case management of babies with signs of infection Safe oxygen management and supportive care for RDS Case management of babies with significant jaundice	Evidence: Moderate to high* Recommendation: Strong
Hospital care of preterm babies with RDS including if appropriate, CPAP and/or surfactant	Evidence: Moderate to high* Recommendation: Strong
Intensive neonatal care	Evidence: High* Recommendation: Strong

Source: *Born Too Soon*, Chapter 5 [113] adapted from *The Healthy newborn: A reference guide for program managers* (Lawn et al., 2001) [39], and *PMNCH essential Interventions* (PMNCH, 2011) [127] using WHO guidelines, LiST, Cochrane and other reviews, with detailed references in text. * Note that the evidence is mostly from high-income countries and more context specific research required in middle- and low-income settings.

infections. For the poorest families giving birth at home, the use of clean birth kits and improved practices have been shown to reduce mortality [43]. Cluster trials of participatory learning through women's groups have shown large reductions in both maternal and neonatal mortality, with increased handwashing by birth attendants and increased use of clean delivery kits [44].

Recent cluster-randomised trials have shown some benefit from chlorhexidine topical application to the baby's cord and no identified adverse effects. To date, about half of trials have shown a significant neonatal mortality effect especially for premature babies and particularly with early application, which may be challenging for home births [45-47]. Another possible benefit of chlorhexidine is a behaviour change agent — in many cultures around the world, something is applied to the cord and a policy of chlorhexidine application may accelerate change by substituting a harmful substance for a helpful one.

The skin of premature babies is more vulnerable, and is not protected by vernix like a term baby's. Topical application of emollient ointment such as sunflower oil or Aquaphor™ reduces water loss, dermatitis and risk of sepsis [48] and has been shown to reduce mortality for preterm babies in hospital-based trials in Egypt and Bangladesh [49,50]. Three trials are now testing the effect of emollients in community settings in South Asia, but as yet there are none being conducted in Africa [51]. This is a potentially scaleable, simple approach to save lives even where most births are at home.

Another effective and low cost intervention is appropriate timing for clamping of the umbilical cord, waiting 2-3 minutes or until the cord stops pulsating, whilst keeping the baby below the level of the placenta. For preterm babies this reduces the risk of intracranial bleeding and need for blood transfusions as well as later anemia. Yet this intervention has received limited attention [52]. Possible tension between delayed cord clamping and active management of the 3rd stage of labour with controlled cord traction has been debated, but the Cochrane review and also recent-evidence statements by obstetric societies support delayed cord clamping for several minutes in all uncomplicated births [53].

Package 2: Neonatal resuscitation

Between 5 to 10% of all newborns and a greater percentage of premature babies require assistance to begin breathing at birth [54]. Basic resuscitation through use of a bag-and-mask or mouth-to-mask (tube and mask) will save four out of every five babies who need resuscitation; more complex procedures, such as endotracheal intubation, are required only for a minority of babies who do not breathe at birth and who are also likely to need ongoing ventilation. Recent randomised control trials support the fact that in most cases assisted ventilation with room air is equivalent to using oxygen, and unnecessary oxygen has additional risks [55]. Expert opinion suggests that basic resuscitation for preterm births reduces mortality by about 10% in addition to immediate assessment and stimulation [56]. An

education program entitled Helping Babies Breathe has been developed by the American Academy of Pediatrics and partners for promotion of basic neonatal resuscitation at lower levels of the health system in low-resource settings and is currently being scaled up in over 30 low-income countries and promises potential improvements for premature babies [2,57-59]. Whether community-based resuscitation training will reduce neonatal mortality is much less certain [60,61].

Package 3: Kangaroo Mother Care

KMC was developed in the 1970s by a Colombian paediatrician, Edgar Rey, who sought a solution to incubator shortages, high infection rates and abandonment among preterm births in his hospital [62,63]. The premature baby is put in early, prolonged and continuous direct skin-to-skin contact with her mother or another family member to provide stable warmth and to encourage frequent and exclusive breastfeeding. A systematic review and meta-analysis of several randomised control trials found that KMC is associated with a 51% reduction in neonatal mortality for stable babies weighing <2,000 g if started in the first week, compared to incubator care [64]. These trials all considered facility-based KMC practice where feeding support was available. An updated Cochrane review also reported a 40% reduction in risk of post-discharge mortality, about a 60% reduction in neonatal infections and an almost 80% reduction in hypothermia. Other benefits included increased breastfeeding, weight gain, mother-baby bonding and developmental outcomes [65]. In addition to being more parent and baby friendly, KMC is more health-system friendly by reducing hospital stay and nursing load and therefore giving cost savings [66]. KMC was endorsed by the WHO in 2003 when it developed a program implementation guide [67]. Some studies and program protocols have a lower weight limit for KMC, e.g., not below 800 g, but in contexts where no intensive care is available, some babies under 800 g do survive with KMC and more research is required before setting a lower cut off. Despite the evidence of its cost effectiveness, KMC is underutilised although it is a rare example of a medical innovation moving from the Southern hemisphere, with recent rapid uptake in neonatal intensive care units in Europe [64].

Package 4: Special care of premature babies and phased scale up of neonatal intensive care

Moderately-premature babies without complications can be cared for with their mothers on normal postnatal wards or at home, but babies under 32 weeks gestation are at greater risk of developing complications and will usually require hospital admission. Fewer babies are born under 28 weeks of gestation and most of these will require intensive care.

Care of babies with signs of infection

Improved care involves early detection of such danger signs and rapid treatment of infection, while maintaining breastfeeding if possible [68,69]. Identification is complicated by the fact that ill premature babies may have a low temperature, rather than fever. First level management of danger signs in newborns has relatively recently been added to Integrated Management of Childhood Illness guidelines [68, 70]. WHO recommends that all babies with danger signs be referred to a hospital. Where referral is not possible, then treatment at the primary care centre can be lifesaving.

Care of babies with jaundice

Premature babies are at increased risk of jaundice as well as infection, and these may occur together compounding risks for death and disability [22]. Since severe jaundice often peaks around day 3, the baby may be at home by then. Implementation of a systematic predischarge check of women and their babies would be an opportunity to prevent complications or increase careseeking, advising mothers on common problems, basic home care and when to refer their baby to a professional.

Babies with Respiratory Distress Syndrome

For premature babies with RDS, methods for administering oxygen include nasal prongs, or nasal catheters. Safe oxygen management is crucial and any baby on continuous oxygen therapy should be monitored with a pulse oximeter [71].

The basis of neonatal care of very premature babies since the 1990s was assisted ventilation. However, reducing severity of RDS due to greater use of antenatal corticosteroids and increasing concerns about lung damage prompted a shift to less intensive respiratory support, notably CPAP, commonly using nasal prongs to deliver pressurised, humidified, warmed gas (air and/or oxygen) to reduce lung and alveoli collapse [72]. This model of lower intensity may be feasible for wider use in middle-income countries and for some low-income countries that have referral settings with stronger systems of support such as high-staffing, 24-hour laboratories.

Recent trials have demonstrated that CPAP reduces the need for positive pressure ventilation of babies less than 28 weeks gestation, and the need for transfer of babies under 32 weeks gestation to neonatal intensive care units [73-75]. One very small trial in South Africa comparing CPAP with no ventilation among babies who were refused admission to neonatal intensive care units found CPAP reduced deaths [76]. In Malawi, a CPAP device developed for low-resource settings is being trialed in babies with respiratory distress who weigh over 1,000 g [77]. Early results show 67% of babies on CPAP survived compared to 24% without CPAP but on oxygen [78]. An

important outcome will be to assess the nursing time required and costs [79].

Increasing use of CPAP without regulation is a concern. Many devices are in the “homemade” category; several low-cost bubble CPAP devices are being developed specifically for low-income countries but need to be tested for durability, reliability and safety [80]. CPAP-assisted ventilation requires adequate medical and nursing skill to apply and deliver safely and effectively, and also requires other supportive equipment such as an oxygen source, oxygen-monitoring device and suction machine.

Surfactant is administered to premature babies’ lungs to replace the missing natural surfactant, which is one of the reasons babies develop RDS. The first trials in the 1980s demonstrated mortality reduction in comparison to ventilation alone, but it was 2008 before surfactant was added to the WHO Essential Medicine list [81]. Uptake is limited in middle- and especially low-income countries as the current products can only be feasibly administered in a well-equipped and staffed hospital that can intubate babies. The cost also remains a significant barrier. In India, surfactant costs up to \$600 for a dose [82]. Data from India and South Africa suggest that surfactant therapy is restricted to use in babies with potential for better survival, usually over 28 weeks gestation due to its high price [82]. Costs may be reduced by synthetic generics and simplified administration, for example with an aerosolised delivery system, but before wide uptake is recommended, studies should assess the additional lives saved by surfactant once antenatal corticosteroids and CPAP are used.

Evidence limitations

Most published trials come from high-income countries where care for premature babies assumes the presence of neonatal intensive care, and large multi-site trials often examine the incremental effect of a specific change in care. Few rigorous trials are undertaken in lower-income settings where severe morbidity and fatal outcomes are common, contextual challenges may be critical and the counterfactual or control group should really be women or neonates receiving no care at all as this is the real question for policymakers. For example, in the KMC RCTs the control group was those receiving routine incubator care, which may dilute the impact measured compared to a counterfactual of no care. Ironically, more of the large recently funded rigorous trials are community-based, such as those assessing chlorhexidine and emollients [51], and there is an urgent need for more facility-based research addressing quality of care and including cost analyses.

There were a number of interventions considered in a systematic review of essential interventions that are used

in high-income settings for premature babies but were not included in the global recommendations for scale up due to lack of context-specific evidence on cost effectiveness—for example, caffeine citrate to reduce the risk of apnea of prematurity [83]. Thus, more evidence from low-income settings is required particularly with respect to context-specific adaptation and associated implementation realities.

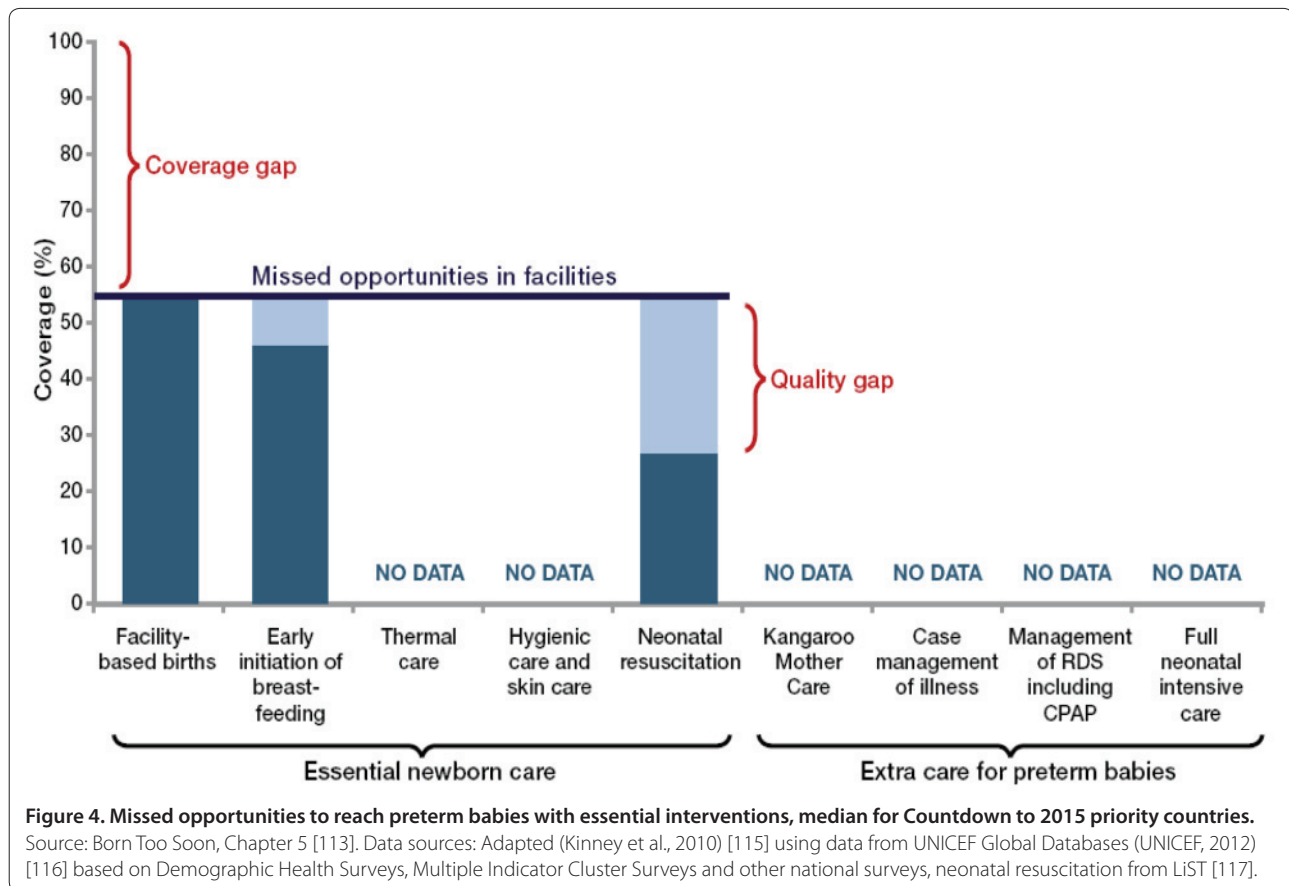
Program opportunities for scale up of care

National coverage data for many of the evidence-based interventions for premature babies are lacking even in high-income settings, hence it is difficult to assess the global situation for care of premature babies or indeed for several important newborn care interventions (Figure 4).

For the 50 million home births without skilled care, the poorest women in the poorest countries, a major care gap is obvious. In sub-Saharan Africa, more than half of home births are alone, with no attendant [84]. In South Asia, around one-third of home births are without traditional birth attendants. In these instances, the primary caregivers of babies are their mothers and their families. Ensuring that women and communities are informed about healthy home care and enabled to care for their newborns and especially their preterm babies in the best possible way is critical. Women’s groups which offer peer counselling and community mobilisation have been shown to have a significant effect on maternal and neonatal mortality [44,85,86].

The increasing pace of policy and program change for home-visit packages during pregnancy and after birth provides an opportunity to empower women to have a better outcome themselves and for their babies [87]. An early postnatal visit (within two days of birth) is one of only seven coverage indicators along the continuum of care selected by the United Nations Commission on Information and Accountability and tracked by Countdown to 2015 [88,89]. In the 75 Countdown to 2015 priority countries, only 1 in 3 women and babies have an early postnatal visit — the lowest of the seven indicators. This early visit is critical for survival and health and an important opportunity to identify preterm babies. Novel methods for identification of premature babies include community health workers using foot size to identify those babies and then providing extra visits, breastfeeding support and referral to a facility if needed [90].

As well as gaps in coverage of crucial interventions for women and babies, there are equity gaps between rich and poor, public and private health sectors, provinces and districts and among rural, urban and peri-urban populations. Complex, facility-based interventions tend to have a higher level of inequity than simpler interventions that can be delivered closer to home [91]. For



example, there is low inequity for immunisation and antenatal care, while higher disparities exist for skilled attendance coverage [92]. Among the 54 of 75 Countdown to 2015 priority countries with equity data, birth in a health facility is more than twice as likely for a richer family compared to a poorer family [93].

Many African and most South Asian countries are experiencing increases in health facility births, some very rapidly [89]. However, the quality of care has not kept pace with coverage, leaving a quality gap but also giving cost-effective opportunities for lifesaving care for women and babies who are reachable in health facilities. For example, midwives are skilled and equipped to provide essential newborn care and resuscitation if needed. However, often key commodities or attention to infection prevention are lacking. Perinatal audit data and process can be a powerful tool for improving quality of care and can also be collated and used for national or subnational improvement of care [94].

Figure 4 shows the coverage and quality gaps for premature baby care in the Countdown to 2015 priority countries, highlighting the data gaps. With just over 50% of all births taking place in health facilities, essential newborn care could be provided for all those babies. Yet

data show even the apparently simple practices of hand cleansing and warmth in the labour room are poorly done around the world [95]. Early initiation of breastfeeding is tracked by national household surveys but the practices for premature babies and duration of breastfeeding for preterm babies is not known at national level.

Neonatal resuscitation scale up is benefitting from recent innovation in technology and from public-private partnerships [96] and also more attention since being listed as one of the 13 priorities for the United Nations Commission on Life Saving Commodities for Women and Children [97]. However, data from Service Provision Assessment surveys suggested that under half of all skilled birth attendants had resuscitation skills and/or the correct equipment in terms of bag-and-mask (Figure 4) [54].

KMC, despite being established for more than 20 years, has had limited scale up (Figure 5). It is currently implemented on a large scale in only a few countries such as Colombia, Brazil and South Africa. There has also been rapid uptake in neonatal intensive care units in high-income countries, including for ventilated babies [98]. Systematic scale up of KMC is making progress in some countries in sub-Saharan Africa and South Asia including Malawi [99], Tanzania, Rwanda, Ghana [100], Indonesia

Preparation and national buy-in by key stakeholders

- Identify national champions to understand and address the barriers to expansion of KMC.
- Interact with policymakers, service providers and donors regarding the evidence for KMC as a cost-effective intervention, sharing experiences from other countries.
- Enable catalytic learning visits-internal or external -for policymakers and service providers, to see KMC implementation, and tiny preterm babies surviving with KMC. Recognise that KMC is used in neonatal intensive care units in high-income countries and is not just a second best option, and that initial cultural reluctance, or modesty concerns can be overcome.
- Establish a Ministry of Health led national level stakeholder process with support from implementing partners and ownership by nursing and medical associations.

Planning and introduction

- Develop national policy/strategy, service guidelines, training materials, job aids, supervisory systems and indicators to track implementation and monitor outcomes.
- Adapt KMC to the local setting, translation (e.g., “kumkumbatia mtoto kifuani” = cuddle your baby in Kiswahili), locally tested counselling materials and posters addressing specific barriers e.g., regarding modesty.
- Establish learning centres strategically to maximise expansion (e.g., regional hospitals) and implement master training, transfer training, ongoing mentoring.
- Promote systems focus and district ownership and sustainable resource commitment for training and supervision. Equipment or commodities are not the limiting factor for scale up. Staff skills, leadership, ongoing quality improvement are fundamental to success.

Institutionalizing, increasing coverage and quality

- Integrate KMC with other training packages and supervision systems and institutionalise within pre-service medical and nursing education including adequate practical KMC experience.
- Integrate KMC and other newborn care indicators into national HMIS, national household surveys and quality improvement systems and use this data to review coverage and quality of services, linking to national and district health annual workplans.
- Expand newborn care services using KMC as an entry point to improve the care of preterm babies including feeding support, safe oxygen use, and training for preterm baby care especially for nurses.

Figure 5. Kangaroo Mother Care –what works to accelerate progress towards scale? Source: Born Too Soon, Chapter 5 [113].

Community Level/Home

- Mothers and fathers
- Community health workers, extension workers and outreach nurses or midwives

First Level/Outreach

- Nurse and midwives also with skills for newborn care
- Medical assistants or clinical officers
- Extension workers
- Ward attendants

Referral Level/District Hospital

- Nurse and midwives with higher skills in newborn care (e.g., KMC, management of sepsis and RDS)
- Doctor and specialists
- Content-specific cadres e.g. medical assistants, clinical officers

Figure 6. The right people for reducing deaths and disability in preterm babies. Source: Born Too Soon, Chapter 5 [113].

and Vietnam [101]. In other countries, a KMC unit established in one teaching hospital over a decade ago has yet to benefit babies in the rest of the country. Lessons are being learned in overcoming barriers such as lack of knowledge by policy makers and service providers. Countries that are making more rapid progress have a national policy for KMC, a learning site, national champions, and a plan for national implementation. IN

addition, they have integrated training along with essential newborn care and resuscitation into pre-service medical and nursing education (Figure 5). KMC can be safely delivered by trained patient attendants under the supervision of nurses, allowing nurses to look after the sickest neonates – a successful example of taskshifting [99]. A major impediment to program tracking and accountability is the lack of data for coverage of KMC,

Table 3. Tools, technologies, and innovations required for the care of preterm babies

Priority packages and interventions	Current technology/Tools	Technological innovations required
All babies		
Essential newborn care and extra care for preterm babies <ul style="list-style-type: none"> • Thermal care (drying, warming, skin-to-skin and delayed bathing) • Early initiation, exclusive breastfeeding • Hygienic cord and skin care 	<ul style="list-style-type: none"> • Protocols for care, training materials and job aids • Materials for counselling, health education and health promotion • Weighing scales • Cord clamp and scissors, clean birth kit if appropriate • Vitamin K for LBW babies 	<ul style="list-style-type: none"> • Generic communications and counselling toolkit for local adaptation • Generic, modular training kit for adaptation, novel methods e.g. cell phone prompts • Birth kits for frontline workers • Chlorhexidine preparations for application to the umbilical cord • Simplified approaches to identifying preterm babies such as footsize
Neonatal resuscitation for babies who do not breathe at birth	<ul style="list-style-type: none"> • Materials for training and job aids • Training manikins • Newborn resuscitation devices (bag-and-mask) • Suction devices • Resuscitation stations with overhead heater • Clock with large face and second hand 	<ul style="list-style-type: none"> • Wide scale novel logistics systems to increase availability of devices for basic resuscitation and training manikins • Additional innovation for resuscitation devices (e.g. upright bag-and-mask, adaptable, lower cost resuscitation stations)
Preterm babies		
Kangaroo mother care for small babies (birthweight <2,000 g)	<ul style="list-style-type: none"> • Cloth or wrap for KMC • Baby Hats 	Generic communications and counselling toolkit for local adaptation, Innovation to address cultural, professional barriers Generic, modular training kit and job aids for local adaptation
Care of preterm babies with complications including: <ul style="list-style-type: none"> • Extra support for feeding preterm and small babies • Case management of babies with signs of infection • Safe oxygen management and supportive care for RDS • Case management of babies with significant jaundice • Managing seizures 	<ul style="list-style-type: none"> • Nasogastric tubes, feeding cups, breast milk pumps • Blood sugar testing sticks • IV fluids including glucose and more accurate giving sets • Syringe drivers • Injection antibiotics, 1 cc syringes/27G needles, preloaded syringes • Oxygen supply/concentrators • Nasal prongs, headboxes, other O2 delivery systems • Pulse oximeters to assess blood oxygen levels with reusable cleanable neonatal probes. • Bilirubinometers (table top and transcutaneous) • Phototherapy lamps and eye shades • Exchange transfusion kits • Hot cots, overhead heaters 	Lower-cost and more robust versions of: <ul style="list-style-type: none"> • Blood sugar testing for babies on low volume samples, heel pricks • Oxygen condensers, including portable options • Pulse oximeters and robust probes, including with alternative power options • Syringe drivers able to take a range of syringes • Bilirubin testing devices including lower cost transcutaneous devices • Haemoglobin and blood grouping, Rhesus Point of Care • Point of care for C-reactive protein/procalcitonin • Apnoea alarm • Phototherapy devices such as portable "bilibed" to provide both phototherapy treatment and heat
Neonatal intensive care	<ul style="list-style-type: none"> • Continuous Positive Air Pressure (CPAP) devices with standardised safety features 	<ul style="list-style-type: none"> • Lower-cost robust CPAP equipment with standardised settings • Neonatal intensive care context specific "kits", e.g., district hospital with ongoing support for quality use and for equipment maintenance • Surfactant as more stable, lower cost preparations

Source: Born Too Soon, Chapter 5 [113]. Note this table refers to care after the baby is born so does not include other essential tools and technologies such as antenatal steroids, or critical commodities for the woman Data sources: (East Meets West; WHO et al., 2003; Lawn et al., 2006; 2009a; PMNCH, 2011) [40, 127-130].

although this indicator could feasibly be tested for inclusion in household surveys.

Quality of service provision requires the availability of people with the right skills (Figure 6) as well as essential equipment and drugs. Indeed, for newborn survival, skilled people are at least as critical as equipment and commodities (Table 3) [102]. Shortages of qualified health workers and inadequate training and skills for the

care of premature babies are a major reason for poor progress in reducing neonatal deaths [92,103]. Nurses or midwives with skills in critical areas such as resuscitation, KMC, safe oxygen management, and breastfeeding support are the frontline worker for premature babies, yet in the whole of sub-Saharan Africa there are no known neonatal nurse training courses. Urgent systematic attention is required for pre-service and in-service

Table 4. High impact, low cost interventions to save newborns

Intervention	Lives saved	Cost
Case management of neonatal sepsis*	~500,000	\$0.13 - \$2.03
Chlorhexidine umbilical cord cleaning*	<i>Cannot estimate in LiST</i>	\$0.23
Neonatal resuscitation*	~230,000	~\$0.50 - \$10.00
Antenatal corticosteroids for preterm labour*	~430,000	~\$0.60
Kangaroo Mother Care	~450,000	

* Prioritised by the UN Commission on Life Saving Commodities for Women and Children
 Source: interventions marked with* (Save the Children, 2013) [133]; Kangaroo Mother Care analysis (Lawn et al. 2013) [2].

Table 5. Research priorities for reducing deaths and disability in preterm babies

Description
<ul style="list-style-type: none"> Standardised, simplified metrics for assessing acute morbidities in premature babies and tools and protocols for comparable follow up of impairment and disability in premature babies
<p>Discovery</p> <ul style="list-style-type: none"> Biomarkers of neonatal sepsis Sensitive, specific identification of sepsis in preterm and other newborns Shorter course antibiotics, oral, fewer side effects Stability of oral surfactant
<p>Development</p> <ul style="list-style-type: none"> Development of simpler, lower-cost, robust devices (See Table 5.3 for full list) Simplified identification of preterm babies in communities, increased accuracy of GA in facilities Community initiation of Kangaroo Mother Care
<p>Delivery</p> <p>Implementation research to understand and accelerate scaling up of facility based care:</p> <ul style="list-style-type: none"> KMC, including quality improvement, task shifting Feeding support for preterm babies Infection case management protocols and quality improvement Improved care of RDS, including safe oxygen use protocols and practices Infection prevention <p>Implementation research at community level</p> <ul style="list-style-type: none"> Simplified improved identification for premature babies Referral strategies Feasibility and effect of home care for preterm babies in humanitarian emergencies or where referral is not possible

Source: Born Too Soon, Chapter 5 [113].

training, non-rotation of nurses with skills in neonatal care, and where appropriate the development of a neonatal nurse cadre, as well as rewarding for those who work against the odds in hard-to-serve areas [2].

While most premature babies are born just a few weeks early and can be saved with the right people and simple care, for more extreme premature babies, additional skills, equipment and commodities are critical, ranging from bag- and-mask and controlled IV fluid-giving sets, to CPAP and surfactant (Table 3). A premature baby suffering from RDS requires oxygen and safe monitoring of oxygen saturation levels with a pulse oximeter — however, this equipment is often unavailable. Likewise, prevention of hearing impairment for premature babies being treated for infection with gentamicin requires dose titration and, ideally, laboratory monitoring of gentamicin levels, which is often unavailable. The UN Commission on Life-saving Commodities for Women and Children has prioritised

high-impact, neglected commodities, and these include several for the care of premature babies [97] (Table 4).

Addressing newborn care in district hospitals is a key priority for improving newborn survival and health. In most countries, district hospitals are understaffed and poorly resourced compared to teaching hospitals. Design and implementation of context-specific hospital newborn care packages is critical, especially as more births occur in facilities, also with referral transport and communications linkages between home and hospital. Newborn units at this level should aim at providing warmth (using KMC, or radiant warmers), assisted enteral feeding of expressed breast milk (by feeding tube, spoon, 'paladai'), intravenous fluids for sick babies, antibiotics, oxygen, and, if possible, CPAP. There are a number of large-scale examples of improved newborn care in district hospitals including a network in rural Western Kenya [104]. In Limpopo, South Africa, a network of more than 30

Table 6. Actions for reducing deaths and disability in preterm babies

Invest and plan

Assess and advocate for newborn and preterm baby care, mobilise parent power

- Review existing policies and programs to integrate high-impact care for premature babies
- Train nurses for newborn care and include skilled personnel for premature baby care in human resource planning for all levels of the health system where babies are cared for
- Ensure essential equipment and commodities are consistently available

Implement

Seize opportunities through other programs including

For all facility births ensure:

- immediate essential newborn care and neonatal resuscitation if needed
- infection prevention and management

At community level scale up:

- Pregnancy and postnatal home visits, including behaviour change messages for families, as well as identification, extra care and referral for premature babies,
- Breastfeeding promotion through home visits, well baby clinics, baby friendly hospital initiative

Reach high coverage with improved care for premature babies especially

- Kangaroo Mother Care and improved feeding for small babies
- Antenatal corticosteroid use
- Respiratory distress syndrome support, safe oxygen use
- Audit and quality improvement processes
- Provide family support

Where additional capacity consider:

- Additional neonatal care such as CPAP,
- Referral level neonatal intensive care, with safeguards to ensure the poor can also access this care

Careful attention to follow up of premature babies (including extremely premature babies) and early identification of impairment

Inform and improve program, coverage and quality

- Improve the data including morbidity follow up and use this in programmatic improvement e.g. gestational specific survival, rates of retinopathy of prematurity etc.
- Address key gaps in the coverage data especially for Kangaroo Mother Care

Innovate and undertake research

- Establish prioritised research agenda with emphasis on implementation
- Invest in research and in research capacity
- Conduct multi-country studies of effect, cost and “how to” and disseminate findings linked to action

Source: Born Too Soon, Chapter 5 [113].

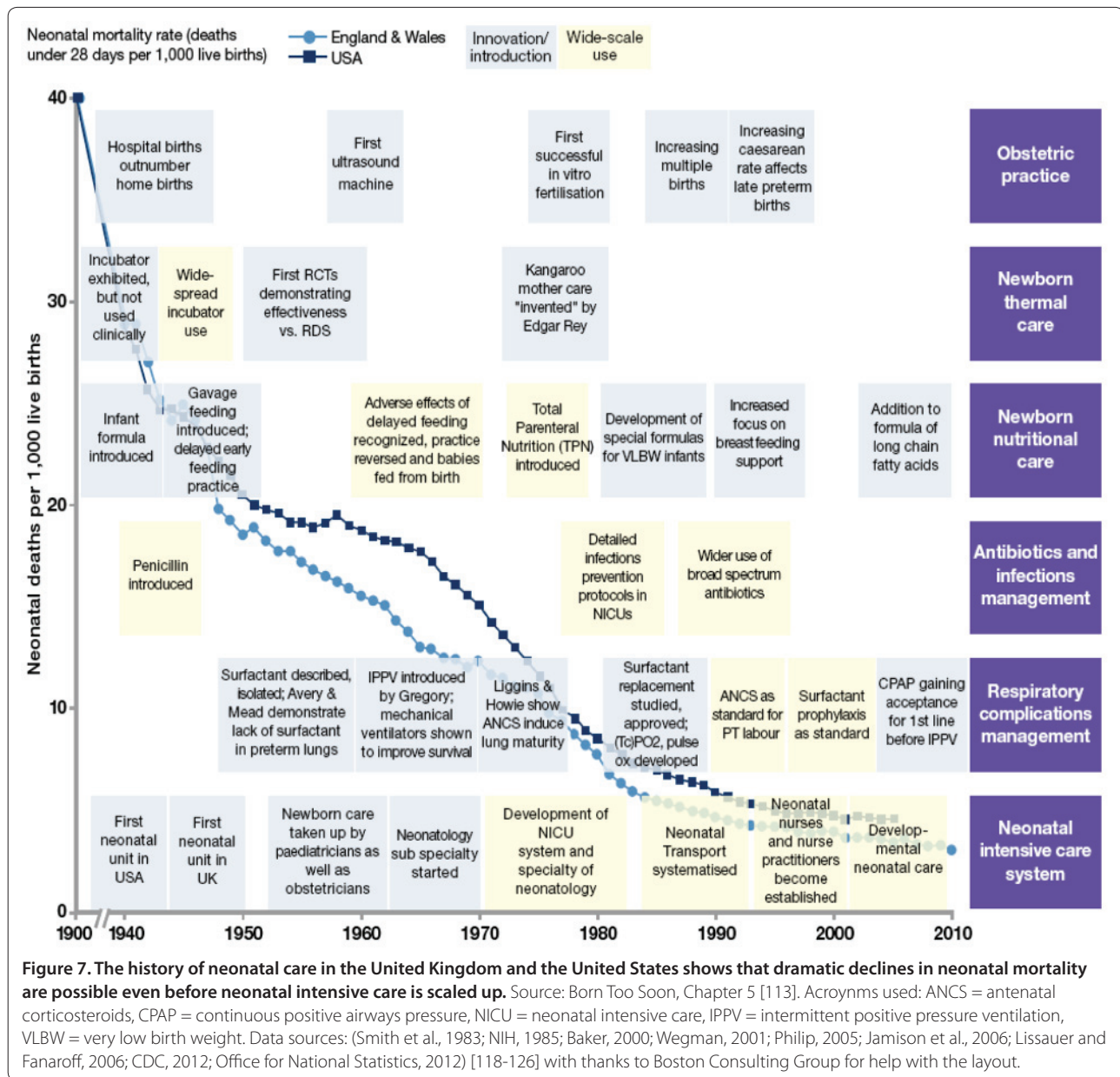
district hospitals instituted an accreditation scheme and targeted quality improvement with mentor teams [105], and in another province, KwaZulu-Natal, a program called Neonatal Experiential Learning reaches 16 hospitals with standard guidelines, resuscitation workshops, a 2-week neonatal training course, and monthly mentor visits.

Across several Indian states, peripheral hospitals have developed a dedicated newborn care space (“Newborn corner”) including basic equipment, while referral hospitals have upgraded special-care baby units. According to the government’s most recent data, there are now 13,219 newborn care corners, 1,574 newborn stabilisation units and 448 special newborn care units. In an attempt to remove financial barrier to neonatal care, India has introduced a program (Janani Shishu Suraksha Karyakaram) that entitles all pregnant women and neonates to free care at public facilities including free drugs and free transport from and to home. An evaluation of the special newborn care units (SNCU) concluded that it is possible to set up and manage quality SNCUs and improve the

survival of small and preterm newborns and those with sepsis, although several challenges relating to human resources, maintenance of equipment, and asepsis remain [106]. Skilled and motivated nurses are the key to successful neonatal units. Some also have experimented with the use of alternative cadres of ward aides specially trained in newborn care and restricted from rotations to other wards [107].

Priority research for care of the premature newborn

Although 92% of premature babies are born in low- and middle-income countries and 99% of premature babies in these countries die, to date the vast majority of published research has been conducted in high-income countries [108]. Important health gains are achievable in the short term with delivery or implementation research, prioritising the highest-impact interventions and the most significant constraints to scale up (Table 5) [109]. For preterm birth, there is a major gap in developing, delivering, and testing community-based interventions.



A recent systematic exercise ranked 55 potential research questions to address preterm birth and stillbirth at the community level and 29 experts applied a standardised scoring approach developed by the Child Health and Nutrition Research Initiative [110]. The 10 top-ranked questions were all about delivery of interventions and implementation research, notably demand approaches, such as overcoming financial barriers and use of incentives, as well as supply, such as community health workers' tasks and supervision. The need for simplified, validated methods to identify premature babies at community level was ranked second of 55. Since the exercise was focused at community level, equipment and

facility-based innovations were not listed but are widely recognised to be of critical importance (Table 5). Most equipment is developed for high-income countries and requires development and testing in varying contexts in low- and middle-income countries [111]. Discovery research often requires a longer time frame but potentially could have high return, especially with prevention of preterm birth. Description research is also important, especially to address major data gaps for impairment outcomes in low- and middle-income settings and promote more controlled assessment of some interventions, notably the impact of thermal care practices on mortality and morbidity [9].

Depending where in the European Union a woman becomes pregnant or a baby is born, the care received will vary. Wide differences still exist in morbidity and mortality for women and newborns between countries and within countries. Preterm deliveries in Europe make up 5-12% of all births, and disproportionately affect the poorer families. Preterm babies represent Europe's largest child patient group and the number of preterm survivors is increasing. Yet despite the growing prevalence and increasing costs, maternal and newborn health still ranks low on the policy agendas of EU countries.

Parents and healthcare professionals felt the urgent need to act and to give our most vulnerable group - newborns - a voice. The European Foundation for the Care of Newborn Infants (EFCNI) was founded in 2008. EFCNI is a network between countries and between stakeholders across Europe and is motivated especially by parents whose lives have been changed by having or losing a preterm baby. The vision is that every child in Europe receives the best possible start in life, aiming to reduce the preterm birth rate, prevent complications and to provide the best possible treatment and care, also improving long-term health. So far this network has:

- Created a movement of over 30 parent organizations across 27 European countries, a platform for information exchange and targeted training, amplifying the power of parents.
- Published policy documents to promote accountability such as the EU Benchmarking Report "Too little, too late?", a comparison of policies impacting newborn healthcare and support to families across 14 European Member States and the European Call to Action for Newborn Health and "Caring for Tomorrow- EFCNI White Paper on Maternal and Newborn Health as well as Aftercare Services."
- Mobilised politicians through the European Parliament Interest Group on Maternal and Neonatal Health.
- Involved the general public through the first pan-European online awareness and information campaign on prematurity, "ene, mene, mini. One baby in ten is born premature worldwide."

Placing maternal and newborn health more centrally in European and national health policies and research programs is an investment in the human capital of Europe's future generations.

More information is available at <http://www.efcni.org/>

Figure 8. Parents' pain and parents' power. Source: Born Too Soon, Chapter 5.

Prescription for action

The neonatal mortality rate (NMR) in the United Kingdom and the United States was reduced to below 15 per 1,000 live births before neonatal intensive care was widely available, and the largest reduction in NMR from 40 to 15 was related to obstetric care and simpler improvements in individualised newborn care such as warmth, feeding, infection prevention, and case management (Figure 7).

Seven low- and middle-income countries have halved their preterm deaths within a decade [2]. These countries are Sri Lanka, Turkey, Belarus, Croatia, Ecuador, El Salvador, Oman and China. Some of these countries also had fertility rate reductions, which may have contributed [112], but the likely explanation is national focus on improved obstetric and neonatal care, and systematic establishment of referral systems with higher capacity of neonatal care units and staff and equipment helped in some cases by larger national budgets [2]. Over time, as neonatal care increases in scope, people skills, commodities and equipment become more critical and at a NMR below 15 per 1,000 live births, intensive care plays an increasing role. Hence low- and middle-income countries

should be able to halve the risk of their newborns, their most vulnerable citizens, of dying with the right people and the right basic commodities. Yet human resource planning has not addressed this key need, and courses for nurse training in neonatal care are rare in sub-Saharan Africa and much of South Asia. Investing in frontline workers and skills is crucial to overcoming nervousness of many workers when looking after tiny babies, and building their lifesaving skills. A phased approach, for example using KMC as an entry point to show that babies under 1,000g at birth can and do survive and thrive can be a turning point for clinical staff as well as also hospital management.

Starting from existing program platforms at community level (e.g. home visit packages, women's groups) and at facility level to ensure effective care for all births at health facilities, is cost effective and more likely to show early results. However whilst families remain unreached, for example because of financial barriers to facility birth care, these gaps often mean those most at risk are unreached.

Action for preterm birth will start from increased visibility and recognition of the size of the

problem — deaths, disability, later chronic disease, parent suffering, and wider economic loss (Table 6). In many higher-income countries, visibility is driven by empowered parents, professionals or a synergy of the two (Figure 8). Parents of premature babies are both those who experience the greatest pain and those who hold the greatest power for change. Societal mobilisation has made it unacceptable for women to die while giving birth. The voice of women and families in low-income countries is yet to be mobilised for the issue of newborn deaths and stillbirths, and these deaths too often continue to be accepted as the norm despite the existence of highly cost-effective and feasible solutions.

Conclusion

Globally, progress is being made in reducing maternal deaths and child death after the first month of life. Progress for neonatal deaths is slower. Severe neonatal infection deaths may possibly be reduced through “trickle down” from child health programs. Neonatal deaths due to intrapartum complications (“birth asphyxia”) are also beginning to decline, although slowly, perhaps related to increased investments in care at birth and maternal health and care. However the over 1million deaths among premature babies are less likely to be reduced though “trickle down” from other programs, and indeed it was the specific vulnerability and needs of the premature baby that catalyzed the specialty of neonatology. There are simple solutions that will reduce deaths among premature babies immediately for the poorest families at home in the lowest income settings — for example promotion of early and exclusive breastfeeding, and handwashing, chlorhexidine cord applications and skin-to-skin care. Women’s groups and other community mobilisation approaches are key; however, higher-impact care in facilities is also needed, such as KMC, feeding support and KMC and management of infections and respiratory complications and this is dependent on nurses and others with skills in caring for small babies, as well as more innovative technology, and can be phased over time to add increased complexity. Starting with intensive care will fail if simple hygiene, careful attention to feeding and other basic building blocks are not in place. Many countries cannot afford to rapidly scale up neonatal intensive care but no country can afford to delay doing the simple things well for every baby and investing extra attention in survival and health of newborns especially those who are preterm.

Additional File

Additional file 1. In line with the journal’s open peer review policy, copies of the reviewer reports are included as additional file 1.

Competing interests

The authors declare no conflict of interest

Author contribution

The chapter was drafted by JEL with MVK and all other authors reviewed and contributed.

Acknowledgments

We thank Chris Howson and Rachel Diamond at March of Dimes for assistance with the management of the Born Too Soon report from which this paper is drawn.

The *Born Too Soon* Preterm Birth Action Group, including Preterm Birth Technical Review Panel and all the report authors (in alphabetical order): José Belizán (chair), Hannah Blencowe, Zulfiqar Bhutta, Sohni Dean, Andres de Francisco, Christopher Howson, Mary Kinney, Mark Klebanoff, Joy Lawn, Silke Mader, Elizabeth Mason (chair), Jeffrey Murray, Pius Okong, Carmencita Padilla, Robert Pattinson, Jennifer Requejo, Craig Rubens, Andrew Serazin, Catherine Spong, Antoinette Tshetu, Rexford Widmer, Khalid Yunis, Nanbert Zhong.

The authors appreciated inputs from Kate Kerber. Thank you to Megan Bruno for her administrative support. We would like to thank the Bill & Melinda Gates Foundation for funding the time for Boston Consulting Group.

Funding

The time of JEL and MVK was funded by a grant from Bill & Melinda Gates Foundation to Save the Children’s Saving Newborn Lives programme. The Born Too Soon report was funded by March of Dimes, the Partnership for Maternal, Newborn and Child Health and Save the Children.

List of abbreviations used

CPAP: Continuous positive airway pressure; KMC: Kangaroo Mother Care; PMNCH: Partnership for Maternal, Newborn and Child Health; RDS: Respiratory distress syndrome; SNCU: Special newborn care units; WHO: World Health Organization.

Author details

¹MARCH, London School Hygiene & Tropical Medicine, UK. ²Saving Newborn Lives, Save the Children, Cape Town, South Africa. ³Kwa-Zulu Natal Dept. of Health, Pietermaritzburg, South Africa. ⁴NNASA- Neonatal Nurses Association of Southern Africa, Durban, South Africa. ⁵Congress of International Neonatal Nurses (COINN). ⁶All India Institute for Medical Sciences, New Delhi, India. ⁷World Health Organization, Geneva, Switzerland. ⁸Save the Children and MCHIP, Washington DC, USA. ⁹University College London, UK. ¹⁰Save the Children, Save the Children, Cape Town, South Africa. ¹¹Consultant to Bill & Melinda Gates Foundation, Seattle, WA, USA. ¹²Queen Elizabeth Hospital, College of Medicine, Blantyre, Malawi.

Published: 15 November 2013

References

1. Blencowe H, Cousens S, Oestergaard MZ, Chou D, Moller AB, Narwal R, Adler A, Vera Garcia C, Rohde S, Say L, Lawn JE: **National, regional, and worldwide estimates of preterm birth rates in the year 2010 with time trends since 1990 for selected countries: a systematic analysis and implications.** *Lancet* 2012, **379**:2162-2172.
2. Lawn JE, Kinney MV, Belizan JM, Mason EM, McDougall L, Larson J, Lackritz E, Friberg IK, Howson CP: **Born Too Soon: Accelerating action for prevention and care of 15 million newborns born too soon.** *Reprod Health* 2013, **10**(Suppl 1):S6.
3. Howson CP, Kinney MV, McDougall L, Lawn JE: **Born Too Soon: Preterm birth matters.** *Reprod Health* 2013, **10**(Suppl 1):S1.
4. Blencowe H, Cousens S, Chou D, Oestergaard M, Say L, Moller AB, Kinney M, Lawn J: **Born Too Soon: The global epidemiology of 15 million preterm births.** *Reprod Health* 2013, **10**(Suppl 1):S2.
5. Dean SV, Mason EM, Howson CP, Lassi ZS, Imam AM, Bhutta ZA: **Born Too Soon: Care before and between pregnancy to prevent preterm births: from evidence to action.** *Reprod Health* 2013, **10**(Suppl 1):S3.
6. Requejo J, Althabe F, Merialdi M, Keller K, Katz J, Menon R: **Born Too Soon: Care during pregnancy and childbirth to reduce preterm deliveries and improve health outcomes of the preterm baby.** *Reprod Health* 2013,

- 10(Suppl 1):S4.
7. Petrou S, Henderson J, Bracewell M, Hockley C, Wolke D, Marlow N: **Pushing the boundaries of viability: the economic impact of extreme preterm birth.** *Early Hum Dev* 2006, **82**:77-84.
 8. Liu L, Johnson HL, Cousens S, Perin J, Scott S, Lawn JE, Rudan I, Campbell H, Cibulskis R, Li M, et al: **Global, regional, and national causes of child mortality: an updated systematic analysis for 2010 with time trends since 2000.** *Lancet* 2012, **379**:2151-2161.
 9. Blencowe H, Lee AC, Cousens S, Bahalim A, Narwal R, Zhong N, Chou D, Say L, Modi N, Katz J, et al: **Preterm birth associated impairment estimates at regional and global level for 2010.** *Pediatric Research* submitted.
 10. Behrman RE, Butler AS: **Preterm birth: Causes, consequences, and prevention.** (Committee on Understanding Premature Birth and Assuring Healthy Outcomes BoHSP ed. Washington, D.C.: The National Academies Press; 2006.
 11. Marlow N, Wolke D, Bracewell MA, Samara M: **Neurologic and developmental disability at six years of age after extremely preterm birth.** *N Engl J Med* 2005, **352**:9-19.
 12. Osrin D: **The implications of late-preterm birth for global child survival.** *International journal of epidemiology* 2010, **39**:645-649.
 13. Shapiro-Mendoza CK, Lackritz EM: **Epidemiology of late and moderate preterm birth.** *Semin Fetal Neonatal Med* 2012.
 14. **The effect of antenatal steroids for fetal maturation on perinatal outcomes-interim draft statement.** *NIH Consens Statement Online* 1994, **12**:1-24.
 15. Mwansa-Kambafwile J, Cousens S, Hansen T, Lawn JE: **Antenatal steroids in preterm labour for the prevention of neonatal deaths due to complications of preterm birth.** *Int J Epidemiol* 2010, **39** Suppl 1:i122-133.
 16. Roberts D, Dalziel S: **Antenatal corticosteroids for accelerating fetal lung maturation for women at risk of preterm birth.** *Cochrane database of systematic reviews* 2006, **3**:CD004454.
 17. Althabe F, Belizan JM, Mazzoni A, Berrueta M, Hemingway-Foday J, Koso-Thomas M, McClure E, Chomba E, Garces A, Goudar S, et al: **Antenatal corticosteroids trial in preterm births to increase neonatal survival in developing countries: study protocol.** *Reprod Health* 2012, **9**:22.
 18. De Paoli AG, Morley C, Davis PG: **Nasal CPAP for neonates: what do we know in 2003?** *Archives of disease in childhood Fetal and neonatal edition* 2003, **88**:F168-172.
 19. Sola A, Saldano YP, Favareto V: **Clinical practices in neonatal oxygenation: where have we failed? What can we do?** *Journal of perinatology: official journal of the California Perinatal Association* 2008, **28** Suppl 1:S28-34.
 20. Symington A, Pinelli J: **Developmental care for promoting development and preventing morbidity in preterm infants.** *Cochrane database of systematic reviews* 2003:CD001814.
 21. Lawn JE, Yakoob MY, Haws RA, Soomro T, Darmstadt GL, Bhutta ZA: **3.2 million stillbirths: epidemiology and overview of the evidence review.** *BMC Pregnancy Childbirth* 2009, **9** Suppl 1:S2.
 22. Mwaniki MK, Atieno M, Lawn JE, Newton CR: **Long-term neurodevelopmental outcomes after intrauterine and neonatal insults: a systematic review.** *Lancet* 2012, **379**:445-452.
 23. Gilbert C, Rahi J, Eckstein M, O'Sullivan J, Foster A: **Retinopathy of prematurity in middle-income countries.** *Lancet* 1997, **350**:12-14.
 24. Gilbert C: **Retinopathy of prematurity: a global perspective of the epidemics, population of babies at risk and implications for control.** *Early Hum Dev* 2008, **84**:77-82.
 25. PMNCH: **A Global Review of the Key Interventions Related to Reproductive, Maternal, Newborn and Child Health (RMNCH).** Geneva, Switzerland: The Partnership for Maternal, Newborn & Child Health; 2011.
 26. WHO: **Essential newborn care training course.** Geneva: World Health Organization; 2010.
 27. McCall EM, Alderdice FA, Halliday HL, Jenkins JG, Vohra S: **Interventions to prevent hypothermia at birth in preterm and/or low birthweight babies.** *Cochrane Database Syst Rev* 2005:CD004210.
 28. Who: **Thermal protection of the newborn: A practical guide.** Geneva: WHO; 1997.
 29. Penny-MacGillivray T: **A newborn's first bath: when?** *J Obstet Gynecol Neonatal Nurs* 1996, **25**:481-487.
 30. Duman N, Utkutan S, Kumral A, Koroglu TF, Ozkan H: **Polyethylene skin wrapping accelerates recovery from hypothermia in very low-birthweight infants.** *Pediatr Int* 2006, **48**:29-32.
 31. Greer FR: **Feeding the premature infant in the 20th century.** *The Journal of nutrition* 2001, **131**:426S-430S.
 32. Bhutta ZA, Ahmed T, Black RE, Cousens S, Dewey K, Giugliani E, Haider BA, Kirkwood B, Morris SS, Sachdev HP, Shekar M: **What works? Interventions for maternal and child undernutrition and survival.** *Lancet* 2008, **371**:417-440.
 33. Edmond KM, Zandoh C, Quigley MA, menga-Etego S, Owusu-Agyei S, Kirkwood BR: **Delayed breastfeeding initiation increases risk of neonatal mortality.** *Pediatrics* 2006, **117**:e380-e386.
 34. Mullany LC, Katz J, Li YM, Khatry SK, LeClerq SC, Darmstadt GL, Tielsch JM: **Breast-feeding patterns, time to initiation, and mortality risk among newborns in southern Nepal.** *The Journal of nutrition* 2008, **138**:599-603.
 35. Callen J, Pinelli J: **A review of the literature examining the benefits and challenges, incidence and duration, and barriers to breastfeeding in preterm infants.** *Adv Neonatal Care* 2005, **5**:72-88; quiz 89-92.
 36. Edmond KM, Kirkwood BR, Amenga-Etego S, Owusu-Agyei S, Hurt LS: **Effect of early infant feeding practices on infection-specific neonatal mortality: an investigation of the causal links with observational data from rural Ghana.** *Am J Clin Nutr* 2007, **86**:1126-1131.
 37. Hurst NM: **The 3 M's of breast-feeding the preterm infant.** *J Perinat Neonatal Nurs* 2007, **21**:234-239; quiz 240-231.
 38. WHO: **Guidelines on optimal feeding of low birth weight infants in low and middle income countries.** . Geneva: World Health Organization; 2011.
 39. Lawn JE, McCarthy BJ, Ross SR: *The Healthy newborn: A reference guide for program managers.* CDC and CARE, Atlanta, Georgia 2001.
 40. WHO, UNFPA, UNICEF, The World Bank Group: **Managing newborn problems: a guide for doctors, nurses and midwives.** Geneva: World Health Organization; 2003.
 41. WHO: **Recommendations for management of common childhood conditions: Evidence for technical update of pocket book recommendations.** Geneva: World Health Organization; 2012.
 42. Blencowe H, Cousens S, Mullany LC, Lee AC, Kerber K, Wall S, Darmstadt GL, Lawn JE: **Clean birth and postnatal care practices to reduce neonatal deaths from sepsis and tetanus: a systematic review and Delphi estimation of mortality effect.** *BMC Public Health* 2011, **11** Suppl 3:S11.
 43. Seward N, Osrin D, Li L, Costello A, Pulkki-Brannstrom AM, Houweling TA, Morrison J, Nair N, Tripathy P, Azad K, et al: **Association between Clean Delivery Kit Use, Clean Delivery Practices, and Neonatal Survival: Pooled Analysis of Data from Three Sites in South Asia.** *PLoS medicine* 2012, **9**:e1001180.
 44. Prost A, Colbourn T, Seward N, Azad K, Coomarasamy A, Copas A, Houweling TA, Fottrell E, Kuddus A, Lewycka S, et al: **Women's groups practising participatory learning and action to improve maternal and newborn health in low-resource settings: a systematic review and meta-analysis.** *Lancet* 2013, **381**:1736-1746.
 45. Arifeen SE, Mullany LC, Shah R, Mannan I, Rahman SM, Talukder MR, Begum N, Al-Kabir A, Darmstadt GL, Santosham M, et al: **The effect of cord cleansing with chlorhexidine on neonatal mortality in rural Bangladesh: a community-based, cluster-randomised trial.** *Lancet* 2012, **379**:1022-1028.
 46. Soofi S, Cousens S, Imdad A, Bhutto N, Ali N, Bhutta ZA: **Topical application of chlorhexidine to neonatal umbilical cords for prevention of omphalitis and neonatal mortality in a rural district of Pakistan: a community-based, cluster-randomised trial.** *Lancet* 2012, **379**:1029-1036.
 47. Tielsch JM, Darmstadt GL, Mullany LC, Khatry SK, Katz J, LeClerq SC, Shrestha S, Adhikari R: **Impact of newborn skin-cleansing with chlorhexidine on neonatal mortality in southern Nepal: a community-based, cluster-randomized trial.** *Pediatrics* 2007, **119**:e330-340.
 48. Soll RF, Edwards WH: **Emollient ointment for preventing infection in preterm infants.** *Cochrane database of systematic reviews* 2000:CD001150.
 49. Darmstadt GL, Badrawi N, Law PA, Ahmed S, Bashir M, Iskander I, Al Saïd D, El Kholi A, Husein MH, Alam A, et al: **Topically applied sunflower seed oil prevents invasive bacterial infections in preterm infants in Egypt: a randomized, controlled clinical trial.** In *Pediatr Infect Dis J*, vol. 23. pp. 719-725; 2004:719-725.
 50. Darmstadt GL, Saha SK, Ahmed AS, Choi Y, Chowdhury MA, Islam M, Law PA, Ahmed S: **Effect of topical emollient treatment of preterm neonates in Bangladesh on invasion of pathogens into the bloodstream.** *Pediatr Res* 2007, **61**:588-593.
 51. Duffy JL, Ferguson RM, Darmstadt GL: **Opportunities for Improving, Adapting and Introducing Emollient Therapy and Improved Newborn Skin Care Practices in Africa.** *J Trop Pediatr* 2011.
 52. McDonald SJ, Middleton P: **Effect of timing of umbilical cord clamping of term infants on maternal and neonatal outcomes.** *Cochrane database of*

- systematic reviews 2008;CD004074.
53. Leduc D, Senikas V, Lalonde AB, Ballerman C, Biringer A, Delaney M, Duperron L, Girard I, Jones D, Lee LS, et al: **Active management of the third stage of labour: prevention and treatment of postpartum hemorrhage.** *Journal of obstetrics and gynaecology Canada : JOGC = Journal d'obstetrique et gynecologie du Canada : JOGC* 2009, **31**:980-993.
 54. Wall SN, Lee AC, Niermeyer S, English M, Keenan WJ, Carlo W, Bhutta ZA, Bang A, Narayanan I, Ariawan I, Lawn JE: **Neonatal resuscitation in low-resource settings: what, who, and how to overcome challenges to scale up?** *Int J Gynaecol Obstet* 2009, **107** Suppl 1:S47-62, S63-44.
 55. Saugstad OD, Ramji S, Vento M: **Oxygen for newborn resuscitation: how much is enough?** *Pediatrics* 2006, **118**:789-792.
 56. Lee AC, Cousens S, Wall SN, Niermeyer S, Darmstadt GL, Carlo WA, Keenan WJ, Bhutta ZA, Gill C, Lawn JE: **Neonatal resuscitation and immediate newborn assessment and stimulation for the prevention of neonatal deaths: a systematic review, meta-analysis and Delphi estimation of mortality effect.** *BMC Public Health* 2011, **11** Suppl 3:S12.
 57. WHO: **Basic Newborn Resuscitation: a practical guide.** Geneva: World Health Organization; 1997
 58. Kattwinkel J, Perlman JM, Aziz K, Colby C, Fairchild K, Gallagher J, Hazinski MF, Halamek LP, Kumar P, Little G, et al: **Neonatal resuscitation: 2010 American Heart Association Guidelines for Cardiopulmonary Resuscitation and Emergency Cardiovascular Care.** *Pediatrics* 2010, **126**:e1400-1413.
 59. Singhal N, Lockyer J, Fidler H, Keenan W, Little G, Bucher S, Qadir M, Niermeyer S: **Helping Babies Breathe: global neonatal resuscitation program development and formative educational evaluation.** *Resuscitation* 2012, **83**:90-96.
 60. Carlo WA, Goudar SS, Jehan I, Chomba E, Tshetu A, Garces A, Parida S, Althabe F, McClure EM, Derman RJ, et al: **Newborn-care training and perinatal mortality in developing countries.** *N Engl J Med* 2010, **362**:614-623.
 61. Carlo WA, Goudar SS, Jehan I, Chomba E, Tshetu A, Garces A, Parida S, Althabe F, McClure EM, Derman RJ, et al: **High mortality rates for very low birth weight infants in developing countries despite training.** *Pediatrics* 2010, **126**:e1072-1080.
 62. Charpak N, Ruiz JG, Zupan J, Cattaneo A, Figueroa Z, Tessier R, Cristo M, Anderson G, Ludington S, Mendoza S, et al: **Kangaroo Mother Care: 25 years after.** *Acta Paediatr* 2005, **94**:514-522.
 63. Rey E, Martinez H: **Manejo racional del Nino Prematuro.** *Medicina Fetal* 1983, **Bogota, Colombia: Universidad Nacional, Cursode.**
 64. Lawn JE, Mwansa-Kambafwile J, Horta BL, Barros FC, Cousens S: 'Kangaroo mother care' to prevent neonatal deaths due to preterm birth complications. *Internal Journal of Epidemiology* 2010:i1-i10.
 65. Conde-Agudelo A, Belizan JM, Diaz-Rossello J: **Kangaroo mother care to reduce morbidity and mortality in low birthweight infants.** *Cochrane Database of Systematic Reviews* 2011, **3**:CD002771.
 66. Lima G, Quintero-Romero S, Cattaneo A: **Feasibility, acceptability and cost of kangaroo mother care in Recife, Brazil.** *Ann Trop Paediatr* 2000, **20**:22-26.
 67. Who: **Kangaroo mother care: a practical guide.** Geneva: WHO; 2003.
 68. WHO: **Handbook IMCI: integrated management of childhood illness.** Geneva: World Health Organization; 2005.
 69. WHO: **Pocket book of hospital care for children: Guidelines of the management of common illnesses with limited resources.** Geneva: World Health Organization; 2007.
 70. The Young Infants Clinical Signs Study Group: **Clinical signs that predict severe illness in children under age 2 months: a multicentre study.** *Lancet* 2008, **371**:135-142.
 71. Duke T, Subhi R, Peel D, Frey B: **Pulse oximetry: technology to reduce child mortality in developing countries.** *Annals of tropical paediatrics* 2009, **29**:165-175.
 72. Sankar MJ, Sankar J, Agarwal R, Paul VK, Deorari AK: **Protocol for administering continuous positive airway pressure in neonates.** *Indian journal of pediatrics* 2008, **75**:471-478.
 73. Finer NN, Carlo WA, Walsh MC, Rich W, Gantz MG, Lupton AR, Yoder BA, Faix RG, Das A, Poole WK, et al: **Early CPAP versus surfactant in extremely preterm infants.** *N Engl J Med* 2010, **362**:1970-1979.
 74. Gittermann MK, Fusch C, Gittermann AR, Regazzoni BM, Moessinger AC: **Early nasal continuous positive airway pressure treatment reduces the need for intubation in very low birth weight infants.** *Eur J Pediatr* 1997, **156**:384-388.
 75. Morley CJ, Davis PG, Doyle LW, Brion LP, Hascoet JM, Carlin JB: **Nasal CPAP or intubation at birth for very preterm infants.** *N Engl J Med* 2008, **358**:700-708.
 76. Pieper CH, Smith J, Maree D, Pohl FC: **Is nCPAP of value in extreme preterms with no access to neonatal intensive care?** *J Trop Pediatr* 2003, **49**:148-152.
 77. Brown J, Machen H, Kawaza K, Mwanza Z, Iniguez S, Lang H, Gest A, Kennedy N, Miros R, Richards-Kortum R, et al: **A high-value, low-cost bubble continuous positive airway pressure system for low-resource settings: technical assessment and initial case reports.** *PLoS One* 2013, **8**:e53622.
 78. Kawaza K, Machen H, Brown J, Mwanza Z, Iniguez S, Gest A, Smith O, Oden M, Richards-Kortum R, Molyneux E: **Efficacy of a low-cost bubble CPAP system in treatment of respiratory distress in a neonatal ward in Malawi.** 2013 (submitted).
 79. **Rice 360° brings bubble CPAP to help infants with respiratory ailments in Africa** [<http://bioengineering.rice.edu/Content.aspx?id=2147483870>]
 80. Segre J: **Product analysis for CPAP. Report to Bill & Melinda Gates Foundation.** 2012.
 81. WHO: **WHO Essential Medicines Lists for Children - 3rd edition.** Geneva: World Health Organization; 2011.
 82. Vidyasagar D, Velaphi S, Bhat VB: **Surfactant replacement therapy in developing countries.** *Neonatology* 2011, **99**:355-366.
 83. Bhutta Z, Yakoob M, Salam R, Lassi Z: **Global review of interventions related to Maternal, Newborn and Child Health (MNCH): What works and can be scaled up?** Pakistan: Aga Khan University; 2011.
 84. Unicef: **State of the World's Children 2012.** New York: Unicef; 2012.
 85. Lassi ZS, Haider BA, Bhutta ZA: **Community-based intervention packages for reducing maternal and neonatal morbidity and mortality and improving neonatal outcomes.** *Cochrane Database of Systematic Reviews* 2010, **11**.
 86. Manandhar DS, Osrin D, Shrestha BP, Mesko N, Morrison J, Tumbahangphe KM, Tamang S, Thapa S, Shrestha D, Thapa B, et al: **Effect of a participatory intervention with women's groups on birth outcomes in Nepal: cluster-randomised controlled trial.** *Lancet* 2004, **364**:970-979.
 87. WHO, UNICEF, USAID, Children St: **WHO-UNICEF Joint Statement on home visits for the newborn child: a strategy to improve survival.** Geneva: World Health Organization; 2009.
 88. Commission on Information and Accountability: **Keeping promises, measuring results: Commission on Information and Accountability for Women's and Children's Health.** Geneva: World Health Organization; 2011.
 89. **Countdown to 2015: Accountability for maternal, newborn and child survival. An update on progress in priority countries** [<http://www.countdown2015mnch.org/>]
 90. Marchant T, Jaribu J, Penfold S, Tanner M, Armstrong Schellenberg J: **Measuring newborn foot length to identify small babies in need of extra care: a cross sectional hospital based study with community follow-up in Tanzania.** *BMC Public Health* 2010, **10**:624.
 91. Barros A, Bertoldi G, Bryce J, Boerma T, Victora C: **Descriptive article on magnitude and patterns of socioeconomic inequalities in Countdown to 2015 countries.** *Lancet* 2012 (in press).
 92. Victora CG, Rubens CE: **Global report on preterm birth and stillbirth (4 of 7): delivery of interventions.** *BMC Pregnancy Childbirth* 2010, **10** Suppl 1:S4.
 93. Barros AJ, Ronsmans C, Axelson H, Loaiza E, Bertoldi AD, Franca GV, Bryce J, Boerma JT, Victora CG: **Equity in maternal, newborn, and child health interventions in Countdown to 2015: a retrospective review of survey data from 54 countries.** *Lancet* 2012, **379**:1225-1233.
 94. Pattinson R, Kerber K, Waiswa P, Day LT, Mussell F, Asiruddin SK, Blencowe H, Lawn JE: **Perinatal mortality audit: counting, accountability, and overcoming challenges in scaling up in low- and middle-income countries.** *Int J Gynaecol Obstet* 2009, **107** Suppl 1:S113-121, S121-112.
 95. Knobel RB, Vohra S, Lehmann CU: **Heat loss prevention in the delivery room for preterm infants: a national survey of newborn intensive care units.** *Journal of perinatology : official journal of the California Perinatal Association* 2005, **25**:514-518.
 96. **Helping Babies Breathe** [<http://www.helpingbabiesbreathe.org/guides.html>]
 97. **UN Commission on Life-Saving Commodities for Women and Children** [<http://everywomaneverychild.org/resources/un-commission-on-life-saving-commodities/>]
 98. Nyqvist KH, Anderson GC, Bergman N, Cattaneo A, Charpak N, Davanzo R, Ewald U, Ludington-Hoe S, Mendoza S, Pallas-Allonso C, et al: **State of the art and recommendations. Kangaroo mother care: application in a high-tech environment.** *Acta paediatrica* 2010, **99**:812-819.
 99. Blencowe H, Kerac M, Molyneux E: **Safety, effectiveness and barriers to follow-up using an 'early discharge' Kangaroo Care policy in a resource poor setting.** *J Trop Pediatr* 2009, **55**:244-248.
 100. Nguah SB, Wobil PN, Obeng R, Yakubu A, Kerber KJ, Lawn JE, Plange-Rhule G:

- Perception and practice of Kangaroo Mother Care after discharge from hospital in Kumasi, Ghana: a longitudinal study. *BMC pregnancy and childbirth* 2011, **11**:99.
101. Bergh AM, Rogers-Bloch Q, Pratomo H, Uhuudiyah U, Poernomo Sigit Sidi I, Rustina Y, Suradi R, Gipson R: **Progress in the Implementation of Kangaroo Mother Care in 10 Hospitals in Indonesia.** *Journal of tropical pediatrics* 2012.
 102. Honeyfield ME: **Neonatal nurse practitioners: past, present, and future.** *Advances in neonatal care: official journal of the National Association of Neonatal Nurses* 2009, **9**:125-128.
 103. Knippenberg R, Lawn JE, Darmstadt GL, Begkoyian G, Fogstad H, Walelign N, Paul VK: **Systematic scaling up of neonatal care in countries.** *Lancet* 2005, **365**:1087-1098.
 104. Opondo C, Ntoburi S, Wagai J, Wafula J, Wasunna A, Were F, Wamae A, Migiro S, Irimu G, English M: **Are hospitals prepared to support newborn survival? - An evaluation of eight first-referral level hospitals in Kenya.** *Trop Med Int Health* 2009, **14**:1165-1172.
 105. Robertson A, Malan A, Greenfield D, Mashao L, Rhoda N, Goga A, Kerber K, Lawn J: **Newborn care charts: Management of sick and small newborns in hospital.** Cape Town, South Africa: Save the Children, Limpopo Provincial Government and UNICEF; 2010.
 106. Neogi SB, Malhotra S, Zodepy S, Mohan P: **Assessment of special care newborn units in India.** *J Health Popul Nutr* 2011, **29**:500-509.
 107. Sen A, Mahalanabis D, Singh AK, Som TK, Bandyopadhyay S, Roy S: **Newborn Aides: an innovative approach in sick newborn care at a district-level special care unit.** *Journal of health, population, and nutrition* 2007, **25**:495-501.
 108. Lawn JE, Rudan I, Rubens C: **Four million newborn deaths: is the global research agenda evidence-based?** *Early Hum Dev* 2008, **84**:809-814.
 109. Martines J, Paul VK, Bhutta ZA, Koblinsky M, Soucat A, Walker N, Bahl R, Fogstad H, Costello A: **Neonatal survival: a call for action.** *Lancet* 2005, **365**:1189-1197.
 110. George A, Young M, Bang A, Chan KY, Rudan I, Victora CG, Chopra M, Rubens C: **Setting implementation research priorities to reduce preterm births and stillbirths at the community level.** *PLoS medicine* 2011, **8**:e1000380.
 111. **Powerfree Education Technology** [http://www.pet.org.za/]
 112. Lawn JE, Kinney MV, Black RE, Pitt C, Cousens S, Kerber K, Corbett E, Moran AC, Morrissey CS, Oestergaard MZ: **Newborn survival: a multi-country analysis of a decade of change.** *Health Policy Plan* 2012, **27** Suppl 3:iii6-28.
 113. Lawn JE, Davidge R, Paul V, Von Xylander S, De Graft Johnson J, Costello A, Kinney M, Segre J, Molyneux E: **Care for the preterm baby.** In *Born Too Soon: The global action report on preterm births.* Edited by Howson CP, Kinney MV, Lawn JE. Geneva, Switzerland: World Health Organization; 2012.
 114. Cousens S, Blencowe H, Stanton C, Chou D, Ahmed S, Steinhardt L, Creanga AA, Tuncalp O, Balsara ZP, Gupta S, et al: **National, regional, and worldwide estimates of stillbirth rates in 2009 with trends since 1995: a systematic analysis.** *Lancet* 2011, **377**:1319-1330.
 115. Kinney MV, Kerber KJ, Black RE, Cohen B, Nkrumah F, Coovadia H, Nampala PM, Lawn JE, Axelson H, Bergh AM, et al: **Sub-Saharan Africa's mothers, newborns, and children: where and why do they die?** *PLoS Med* 2010, **7**:e1000294.
 116. UNICEF: **State of the World's Children.** New York, NY: UNICEF; 2012.
 117. **LiST: The Lives Saved Tool. An evidence-based tool for estimating intervention impact** [http://www.jhsph.edu/dept/ih/IIP/list/index.html]
 118. Smith GF, Vidyasagar D, Smith PN: *Historical Review and Recent Advances in Neonatal and Perinatal Medicine.* Chicago: Mead Johnson Nutritional Division; 1983.
 119. NIH: **Neonatal Intensive Care: A history of excellence.** Bethesda, MD, USA: National Institute of Health; 1985.
 120. Baker JP: **The incubator and the medical discovery of the premature infant.** *Journal of perinatology: official journal of the California Perinatal Association* 2000, **20**:321-328.
 121. Wegman ME: **Infant mortality in the 20th century, dramatic but uneven progress.** *The Journal of nutrition* 2001, **131**:401S-408S.
 122. Philip AG: **The evolution of neonatology.** *Pediatric research* 2005, **58**:799-815.
 123. Jamison DT, Shahid-Salles SA, Jamison J, Lawn J, Zupan J: *"Incorporating Deaths Near the Time of Birth into Estimates of the Global Burden of Disease"*. New York, NY: Oxford University Press; 2006.
 124. Lissauer T, Fanaroff AA: *Neonatology at a Glance - At a glance.* Oxford: Wiley-Blackwell; 2006.
 125. **National Vital Statistics Reports** [http://www.cdc.gov/nchs/products/nvsr.htm#vol60]
 126. **Office for National Statistics licensed under the Open Government Licence v.1.0** [http://www.ons.gov.uk/ons/index.html]
 127. **The Partnership for Maternal NCH: A Global Review of the Key Interventions Related to Reproductive, Maternal, Newborn and Child Health (RMNCH).** Geneva, Switzerland: PMNCH; 2011.
 128. **Breath of Life** [http://www.eastmeetswest.org/Page.aspx?pid=344]
 129. Lawn J, Kerber K, eds: *Opportunities for Africa's Newborns: practical data, policy and programmatic support for newborn care in Africa.* Cape Town: PMNCH, Save the Children, UNFPA, UNICEF, USAID, WHO; 2006.
 130. Lawn JE, Kinney M, Lee AC, Chopra M, Donnay F, Paul VK, Bhutta ZA, Bateman M, Darmstadt GL: **Reducing intrapartum-related deaths and disability: can the health system deliver?** *Int J Gynaecol Obstet* 2009, **107** Suppl 1:S123-140, S140-122.
 131. Volpe JJ: **Brain injury in premature infants: a complex amalgam of destructive and developmental disturbances.** *Lancet Neurol* 2009, **8**:110-124.
 132. Schanler RJ: **The use of human milk for premature infants.** *Pediatr Clin North Am* 2001, **48**:207-219.
 133. **Save the Children: State of the World's Mothers: Surviving the first day.** London, UK: Save the Children International; 2013.

doi:10.1186/1742-4755-10-S1-S5

Cite this article as: Lawn JE, et al.: **Born Too Soon: Care for the Preterm Baby.** *Reproductive Health* 2013, **10**(Suppl 1):S5.