

## Characterization of Natural and Affected Environments

**Fecal Fingerprints of Enteric Pathogen Contamination in Public Environments of Kisumu, Kenya associated with Human Sanitation Conditions and Domestic Animals**

Kelly K. Baker, Reid Senesac, Daniel Sewell, Ananya Sen Gupta, Oliver Cumming, and Jane Mumma

*Environ. Sci. Technol.*, **Just Accepted Manuscript** • DOI: 10.1021/acs.est.8b01528 • Publication Date (Web): 14 Aug 2018Downloaded from <http://pubs.acs.org> on August 21, 2018**Just Accepted**

“Just Accepted” manuscripts have been peer-reviewed and accepted for publication. They are posted online prior to technical editing, formatting for publication and author proofing. The American Chemical Society provides “Just Accepted” as a service to the research community to expedite the dissemination of scientific material as soon as possible after acceptance. “Just Accepted” manuscripts appear in full in PDF format accompanied by an HTML abstract. “Just Accepted” manuscripts have been fully peer reviewed, but should not be considered the official version of record. They are citable by the Digital Object Identifier (DOI®). “Just Accepted” is an optional service offered to authors. Therefore, the “Just Accepted” Web site may not include all articles that will be published in the journal. After a manuscript is technically edited and formatted, it will be removed from the “Just Accepted” Web site and published as an ASAP article. Note that technical editing may introduce minor changes to the manuscript text and/or graphics which could affect content, and all legal disclaimers and ethical guidelines that apply to the journal pertain. ACS cannot be held responsible for errors or consequences arising from the use of information contained in these “Just Accepted” manuscripts.

1 Fecal Fingerprints of Enteric Pathogen Contamination in Public Environments of Kisumu, Kenya

2 associated with Human Sanitation Conditions and Domestic Animals

3

4 Kelly K. Baker,<sup>1\*</sup> Reid Senesac,<sup>1</sup> Daniel Sewell,<sup>2</sup> Ananya Sen Gupta,<sup>3</sup> Oliver Cumming,<sup>4</sup> Jane Mumma<sup>5</sup>

5

6 <sup>1</sup> Department of Occupational and Environmental Health, University of Iowa, Iowa City, Iowa, United

7 States

8 <sup>2</sup> Department of Biostatistics, University of Iowa, Iowa City, Iowa, United States

9 <sup>3</sup> Department of Electrical Engineering, University of Iowa, Iowa City, Iowa, United States

10 <sup>4</sup> Department of Disease Control, London School of Hygiene and Tropical Medicine, London, United

11 Kingdom

12 <sup>5</sup> Department of Community Nutrition, Great Lakes University of Kisumu, Kisumu, Kenya

13

14 \* Corresponding author: Kelly K. Baker, University of Iowa College of Public Health, 145 S. Riverside Dr.,

15 S316, Iowa City, IA 52246; (001) 319-384-4008; [kelly-k-baker@uiowa.edu](mailto:kelly-k-baker@uiowa.edu).

16

17

18

**Abstract**

19           Young children are infected by a diverse range of enteric pathogens in high disease burden  
20 settings, suggesting pathogen contamination of the environment is equally diverse. This study aimed to  
21 characterize across and within neighborhood diversity in enteric pathogen contamination of public  
22 domains in urban informal settlements of Kisumu, Kenya, and to assess the relationship between  
23 pathogen detection patterns and human and domestic animal sanitation conditions. Microbial  
24 contamination of soil and surface water from 166 public sites in three Kisumu neighborhoods was  
25 measured by enterococcus assays and qRT-PCR for nineteen enteric pathogens. Regression was used to  
26 assess the association between observed sanitary indicators of contamination with enterococcus and  
27 pathogen presence and concentration, and pathogen diversity. Seventeen types of pathogens were  
28 detected in Kisumu public domains. Enteric pathogens were co-detected in 33% of soil and 65% of  
29 surface water samples. Greater pathogen diversity was associated with the presence of domestic animal  
30 feces, but not with human open defecation, deteriorating latrines, flies, or disposal of human feces.  
31 Sanitary conditions were not associated with enterococcus bacteria, specific pathogen concentrations,  
32 or “any pathogen”. Young children played at 40% of observed sites. Managing domestic animal feces  
33 may be required to reduce enteric pathogen environmental contamination in high-burden settings.

## 34 INTRODUCTION

35           Recent multi-country epidemiological studies of diarrheal disease etiology in high-burden  
36 settings have shown a wide diversity of enteric pathogen infections within and between individual  
37 children, and between populations and population sub-groups (i.e. by age) <sup>1,2</sup>. The diversity in  
38 pathogens causing childhood enteric infections shows that children under the age of five years (<5yr) in  
39 these settings are chronically exposed to a range of environmentally transmitted enteric pathogens.  
40 Relatively little is known about the extent of environmental enteric pathogen contamination in these  
41 settings, and the patterns with which enteric pathogen contamination occurs over space and time. A  
42 handful of studies have reported high frequencies of detection of different types of enteric pathogens in  
43 Indian and Tanzanian household environments, confirming household exposure pathways pose a risk to  
44 children <sup>3-5</sup>. However, recent multi-million dollar randomized, controlled trials of household water,  
45 sanitation, and hygiene (WASH) interventions found inconsistent impact of household WASH on  
46 pediatric diarrhea <sup>6-8</sup>. This suggests that children may be infected by non-household exposure pathways,  
47 such as through play in public areas near their household. In low-income settings where sanitation  
48 coverage is low, neighborhood public areas are often used for open defecation and disposal of  
49 untreated human waste by many households, as well as for domestic animal husbandry <sup>9</sup>. Thus, levels of  
50 pathogen contamination in public areas may far exceed contamination levels in privately owned  
51 domestic areas, and could pose a disproportionately high risk of infection by enteric pathogens for  
52 exposed children.

53           The overarching goal of the Social Microbes Study is to examine enteric pathogen transmission  
54 patterns in high disease burden settings, from sources of fecal contamination through the environment  
55 to children, using pathogen distribution and diversity as indicators of transmission pathways. This is the  
56 first Social Microbes report to be released, which focuses on testing the hypothesis that public areas  
57 within low-income neighborhoods with high disease burden are contaminated by a diverse set of enteric

58 pathogens, and to test whether observed indicators of human and animal feces contamination would be  
59 associated with increased presence and total diversity in pathogens. We also measured how frequently  
60 <5yr children are observed in public areas, and whether we saw unsafe exposure behaviors, to assess  
61 whether public domain exposures are viable pathways for <5yr enteric infection.

62 Environmental fecal contamination is usually measured by general fecal indicator bacteria, fecal  
63 source tracking markers, or focused detection of specific pathogens of interest as indicators of exposure  
64 risk. Fecal *E. coli* and enterococci bacteria are popular, low-cost indicators, but typically correlate poorly  
65 with other infectious pathogens in sewage, ecological soils, surfaces, and waters<sup>10-13</sup>. They may be  
66 particularly unsuitable indicators for measuring risks from feces in ecological systems where gut bacteria  
67 become a naturalized part of soil, water, and surface microbial communities<sup>14</sup>. Host-specific fecal  
68 source tracking markers have improved capacity to distinguish human versus animal fecal contamination  
69 of the environment, but the reliability of fecal source tracking markers for predicting infectious  
70 pathogens is currently unclear<sup>10,15</sup>. Selection of one or a few specific types of enteric pathogens is often  
71 used to understand transmission patterns of specific types of pathogens<sup>16,17</sup>. However, dozens of  
72 enteric viruses, bacteria, protozoans, and helminthic species circulate at different times of the year in  
73 endemic settings, so reliance on any one to predict risks from all pathogens transmitted by fecal-oral  
74 exposure pathways is risky<sup>1,2</sup>. In this study, environmental samples were tested for a wide range of  
75 common enteric viruses, bacteria, protozoans, and helminths involved in fecal-oral disease transmission  
76 in high-burden settings to reduce the likelihood of exposure misclassification (classifying samples as  
77 uncontaminated based upon one indicator) or inaccurate concentration estimates for environmental  
78 exposure pathways.

79 Pathogen diversity was an important systems-level evaluation metric in this study that was  
80 adopted based upon the theory that diversity in enteric pathogen contamination would occur not just  
81 across high disease burden neighborhoods, but also at fine spatial scales. If environmental microbial

82 contamination by human and animal feces is pervasive in high disease burden settings, with multiple  
83 pathogens circulating at any given time, then there is a strong chance that multiple enteric pathogens  
84 co-occur in some environments (e.g. open defecation sites) at the same time. Exposure of children to  
85 these uniquely hazardous environments could increase their risk of infection by multiple pathogen  
86 types. The risk of exposure to any given pathogen from soil or surface water is influenced by the recent  
87 presence of a fecal source, but also by the pathogen's capacity to persist in specific environments, like  
88 soil or surface water, and overall infection rate in a host population. The evolutionary traits that govern  
89 persistence of microbes may be unique to members of a phylogenetic group (e.g. non-obligate bacterial  
90 replication in the environment), as well as reflect species-specific ecological adaptations. Examining both  
91 the pathogen-specific and higher order taxonomic differences in pathogens in the environment could  
92 provide insight as to the types of pathogens potentially transmitted via different child behaviors, e.g.  
93 ingesting soil vs water. From a programming standpoint, capacity to identify high-risk areas or exposure  
94 pathways, in a milieu of existing elevated background contamination, could improve how well  
95 investments reduce <5yr enteric disease in high-burden settings. Pathogen diversity could improve the  
96 identification of high- versus low-risk areas or exposure pathways, and the fecal sources contributing to  
97 environmental contamination.

98         This manuscript describes enteric pathogen detection frequencies and diversity patterns in soil  
99 and surface water from public areas of three low-income, urban neighborhoods of Kisumu, Kenya with  
100 low sanitation coverage. Then, we examine the relationship between human and domestic animal fecal  
101 sources and pathogen detection and diversity patterns.

102

## 103 **MATERIALS AND METHODS**

104 **Study Population.** Kisumu is the third largest city in Kenya, and has a population of approximately  
105 409,928 inhabitants<sup>18</sup>. Up to 60% of the city's population resides in peri-urban informal settlements ,  
106 which have emerged due to economic migration and a lack of affordable housing<sup>19,20</sup>. Kisumu County  
107 has a high prevalence of diarrhea (18% two-week period prevalence) with most cases of diarrhea  
108 occurring in children less than three years of age<sup>21</sup>. The child mortality rate is 105 deaths per 1,000 live  
109 births and the prevalence of severe childhood stunting (> -2 standard deviations below the reference  
110 norm) is approximately 25%<sup>21</sup>. This study took place in three established informal settlements,  
111 Nyalenda A (population density (pd) = 8,953 persons per square kilometer (km<sup>2</sup>)) Nyalenda B (pd =  
112 6,886/km<sup>2</sup>), and Obunga (pd=1,913 km<sup>2</sup>). Co-habitation with domestic animals is common, and most  
113 residents rely upon open defecation or sanitation facilities shared by eight or more households<sup>22,23</sup>.

114 **Pilot of Environmental Sampling and Microbiology Methods.** Prior to conducting the primary study in  
115 Kenya, a pilot sampling project was conducted in Iowa in June 2015 (similar climate conditions) to  
116 understand how often fecal indicators and enteric pathogens would be detected in a watershed  
117 impacted by agriculture, free-range animal management (cows), and concentrated animal feeding  
118 operations (pigs). This information is presented in Supplemental documents as a comparative baseline  
119 for understanding the importance of fecal indicator and pathogen contamination in Kisumu, Kenya.

120 **Sample site selection.** A cross-sectional observational survey with environmental sampling was  
121 performed in Kenya in July 2015. The study was designed to ensure sampling sites were randomly  
122 distributed across special areas of interest to optimize measurement of variability in pathogen diversity  
123 and co-occurrence patterns and to prevent introduction of observer bias in selection of environmental  
124 sampling locations. Neighborhood boundary parameters were visualized utilizing Batchgeo (Google),  
125 and these spaces were defined geographically by the northernmost, westernmost, easternmost, and  
126 southernmost latitude or longitude values in rectangular form. For each neighborhood, sixty latitude  
127 and longitude pairs that fell within these specified ranges were randomly generated utilizing the

128 website, geomidpoint.com, prior to field based data collection (Figure S1). GPS coordinates were  
129 entered into a Waytracker mobile phone app, and daily routes were identified to navigate between ~ 15  
130 coordinates per day. Observers navigated to the coordinates (+/- 3 meters), which was considered the  
131 center of a “site”, defined as all area falling within a 25 meter radius around the central coordinates. If  
132 the coordinates fell within a private household yard or business, the nearest set of coordinates outside  
133 that private space but within 25 meters of the random coordinates were identified. Sites were visited at  
134 various times during the day (morning and afternoon), with site visits lasting approximately 20 minutes.

135 **Public site observation.** Study teams systematically documented sanitary conditions at each site using  
136 an observational survey implemented via mobile phone app (Fieldlogs). Observers documented  
137 landscape features such as surface waters, grasslands and altitude. Development of infrastructure was  
138 noted, including roads, drains, dams, industry, housing, public water sources, and presence, physical  
139 condition, and hygiene of public or communal latrines. Indicators of human open defecation or unsafe  
140 disposal of excreta included observed “flying toilets” (plastic bags containing excreta), used diapers,  
141 piles of human feces, emptying of latrines into drains or land around the latrine, septage emptied from a  
142 latrine next to the latrine, and visual confirmation of an adult or child actively defecating in the open.  
143 Presence and type of domestic animals and their feces were recorded. Observers recorded whether  
144 during that ~ 10-15 minute spot observation, children approximately < 5 yrs were observed in the public  
145 area, the number present, and any behaviors that would result in hand or mouth contact with  
146 environmental fomites (touching soil, surface water, animals, or objects on the ground, swimming,  
147 eating food, eating dirt, mouthing hands). Additionally, enumerators documented whether any children  
148 were defecating in the open at the time of observation. Ecological conditions that could influence  
149 pathogen presence and persistence, specifically daily temperature and relative humidity were extracted  
150 from NOAA data collected at the Kisumu Airport. Observers did not include area within private housing  
151 or businesses adjoining or overlapping with the site area to avoid potential bias in conditions observed



152 from privately held property. However, private conditions that impacted public space, such as drains or  
153 sewage leaching from the household or animals roaming between public and private areas, were  
154 recorded.

155 **Sample collection.** Standard Operating Protocols were implemented to ensure standardized hygienic  
156 sampling and processing of environmental materials. Approximately five grams of soil was collected at  
157 every site by inserting an alcohol-sterilized scoop into the ground at a 45° angle to a depth of 5cm (half  
158 the length of the scoop) and transferring the soil into a sterile WhirlPak® bag (Sigma-Aldrich Corp., St.  
159 Louis, MO, USA). Surface water was collected, if present, by skimming water into a WhirlPak bag.  
160 Collection bags were stored on ice packs in a cooler and transported to the laboratory within six hours of  
161 collection. In Kenya, four samples were collected at seven randomized sites in each neighborhood to  
162 account for anticipated variance in pathogen distributions at public sites caused by the final spatial scale  
163 of sites per neighborhood.

164 **Indicator analysis.** One gram of soil was measured into 10 mls of Phosphate Buffered Saline (PBS),  
165 vortexed for 30 seconds, and then mixed on a rotator for 20 minutes. Solid matter was allowed to settle  
166 for 5 minutes and elute was removed for Enterococci assays. Enterococci are recommended by the US  
167 Environmental Protection Agency for identifying fecal material in fresh and marine recreational waters  
168 <sup>24</sup>, although both enterococci and *E. coli* are considered inadequate indicators in tropical settings like  
169 Hawaii <sup>15, 25</sup>. There is no global recommendation on appropriate indicators for tropical waters, so  
170 enterococci were chosen based upon the EPA policy. Enterococcus were enumerated by vacuum  
171 filtration of three serial dilutions of surface water (10 milliliter (mL), 1 mL, 0.1 mL) or soil (1 mL, 0.1 mL,  
172 0.01 mL) rinse through a white gridded 0.45 µm mixed cellulose esters filter (Product No. GSWP04700,  
173 Millipore, Billerica, MA), and culturing filters for 18-24 hours at 37°C on mEI agar (EPA method 1600).  
174 Colony forming units (cfu) of enterococci were counted according to manufacturer's recommendations.

175 **DNA and RNA extraction.** DNA and RNA was extracted from 0.5 grams of soil using the FastDNA and  
176 FastRNA SPIN kits for Soil (MP Biomedicals, Solon, OH), including a bead beating step. A 10 mL volume of  
177 surface water was processed by adjusting water to 2.5 mM MgCl<sub>2</sub> and pH 10.0, and vacuum filtering  
178 through a 0.45 µm mixed cellulose esters filter. This volume was chosen to ensure we could  
179 systematically sample a wide range of surface waters (flood water puddles, drains, rivers) representing  
180 potential exposure hazards in Kisumu. This method was chosen because it more efficiently removes  
181 inhibitors than ultrafiltration and is practical for laboratories with limited capacity and for isolation of  
182 many different types of pathogens<sup>26,27</sup>. Filters were frozen at -20°C for 1-4 weeks and transported to  
183 the University of Iowa where they were stored at -80°C until extraction (1 week). Filters were cut in half  
184 and processed using the FastDNA and FastRNA for Soil kits (equivalent to 5 mls water).

185 **Quantitative PCR on Environmental Samples.** The concentration and quality of DNA and RNA was  
186 measured using a Nanodrop UV-Vis spectrophotometer (Thermo Scientific, DE, USA). Duplicate 6  
187 microliter (µl) and 0.6 µl volume of nucleic acid extract were tested for inhibition using the QuantiFast  
188 Pathogen Internal Control kit (Qiagen, Germantown, MD). These methods effectively removed most  
189 amplification inhibitors (Table S1). Samples that were not inhibited were analyzed by combining 20 µl of  
190 DNA and RNA each (total 40 µl) with AgPath polymerase and then performing quantitative reverse  
191 transcription Polymerase Chain Reaction (qRT-PCR) using a nineteen pathogen microfluidic TaqMan  
192 Array Card (TAC) on a QuantiStudio 12K Flex Real-Time PCR System with Array Card block  
193 (ThermoFisher, Chicago, IL)<sup>28</sup>. Inhibited samples were diluted 1:10 with diH<sub>2</sub>O before TAC analysis. The  
194 card format included five types of viruses (adenovirus 40-41, astrovirus, sapovirus, norovirus GII,  
195 rotavirus), fourteen types of bacteria (enteroaggregative *E. coli* (EAEC), enteropathogenic *E. coli* (EPEC),  
196 enteropathogenic *E. coli* (ETEC), shiga toxin expressing *E. coli* (STEC), *C. jejuni*, Shigella, *V. Cholerae*, *S.*  
197 *enterica*, *C. difficile*), three protozoans (*Cryptosporidium spp.*, *G. lamblia*, *E. histolytica*), and two  
198 helminths (*Ascaris*, *Trichuris*). Exponential curves and multicomponent plots were visually examined to

199 validate positive amplification. Gene targets with real amplification in one well were re-analyzed and  
200 considered positive if amplification was detected again. Gene targets with cycle threshold (CT) values  
201 over 35 were cross-validated by performing a 14 cycle pre-amplification reaction with pathogen-specific  
202 primers (0.2  $\mu$ M each) to increase the starting concentration of pathogen DNA/cDNA in a sample <sup>29</sup>, and  
203 reanalyzed by qRT-PCR. Samples were classified as positive for a specific gene target if amplification was  
204 verified at a lower cycle threshold, and negative if unverified. This resulted in presence and  
205 concentration data for 24 pathogen gene targets representing 19 types of pathogen taxa per sample  
206 (detection of either gene target for ETEC, EPEC, EAEC, and STEC was positive at a taxa level).

207         The concentration of each pathogen per reaction volume was estimated by comparing the CT  
208 for a pathogen gene target in a sample to a standard curve generated by qRT-PCR of a six to seven-fold  
209 serial dilution of a positive control of known concentration for each of the 19 qRT-PCR targets (Table S2).  
210 For samples that were repeated using the pre-amplification step, the initial concentration was estimated  
211 by comparison to a standard processed by pre-amplification. If samples determined to be positive still  
212 reflected signs of significant inhibition, concentrations were excluded from analysis to avoid biasing  
213 statistical estimates of mean and standard deviation. Otherwise, final concentrations of gene copy per  
214 gram of soil or per mL of surface water were generated by multiplying the concentration of each gene  
215 target by the dilution factors introduced by processing. Concentrations for samples with no detectable  
216 amplification were not transformed to avoid inflating statistics caused by relatively high methodological  
217 lower limit of detection (LLOD) for some pathogens.

218 **Statistical analysis.** Data were analyzed using SAS Version 9.4 (SAS Institute, Cary NC). Descriptive  
219 statistics of variables were reported as proportions or mean and standard deviation.

220         Microbial contamination outcomes of interest included the (1) presence of enterococcus fecal  
221 indicator bacteria, (2)  $\log_{10}$ -number of enterococcus cfu, (3) presence of any pathogen gene targets, (4)  
222 “Pathogen Diversity” defined by the sum count of all unique types of enteric pathogens detected in an

223 individual soil or water sample (either target for pathogenic bacteria defined as one group), and (5)  $\log_{10}$   
224 gene copy of pathogen gene targets.

225 Exposure variables representing potential sources of fecal contamination were: any human or  
226 animal feces observed versus none observed; indicators of open defecation vs. none observed; the  
227 presence of any type of domestic animal present versus none observed; flies present versus none  
228 observed; and a categorical variable for latrines present in good condition, latrines present in bad  
229 condition, and no latrines present. Frequently latrines in both good and bad condition were present at a  
230 site. In this case the site was classified as “latrines in bad condition” based upon the default assumption  
231 that just one deteriorating latrine could introduce contamination into soil and water.

232 Potential confounders included: type of sample (soil versus water), altitude in meters, relative  
233 humidity, temperature in Celsius, and landscape use (housing area versus undeveloped).

234 Generalized linear mixed models (glmm) with binary log link, robust standard errors, and  
235 random intercept for site ID and neighborhood with exchangeable correlation structure to account for  
236 spatial clustering at each level were used to test whether sites with any of the exposure variables were  
237 more likely to have at least one type of enteric pathogen detected. Identical glmm models with Poisson  
238 log link were used to test whether sites with any of the same potential fecal sources were more likely to  
239 have increased sum counts in Pathogen Diversity. Censored regression models were used to assess  
240 whether exposure variables were associated with increased concentration of enteric pathogen gene  
241 copy number to account for left-censoring of data. Each modeling process involved analyzing the effect  
242 of each exposure variable independently on the pathogen outcome, while adjusting for landscape type,  
243 daily temperature, relative humidity, altitude, and type of sample (soil vs. water). Full models included  
244 all variables simultaneously to measure individual effects, accounting for co-occurrence of exposure  
245 variables at a site. Based upon full model results, a sub-analysis of association between specific types of

246 domestic animals and Pathogen Diversity was performed by replacing the binary Domestic Animals  
247 variable with presence/absence variables for specific categories of animals.

248 A one-sided Mantel test using the geographic distances between sites was used to test for  
249 spatial clustering of sites with compositional similarity between pairs of sites in terms of the number of  
250 pathogens detected at both sites.

251

## 252 **RESULTS**

253 **Characteristics of study sites.** A total of 166 public sites were inspected for this study. Ecological  
254 conditions and the proportion of sites developed with housing were relatively similar in the three  
255 surveyed neighborhoods, with the exception of higher mean elevation in Obunga, more sites with  
256 indicators of open defecation or open feces disposal in Nyalenda B, fewer sites with shared latrines in  
257 Obunga, and more latrines in good structural condition in Nyalenda B (Table 1).

258 Children less than five years of age were observed at 40% (66 of 166) sites (median 2 children  
259 per site, range 1-10), including infants (defined as unable to stand and walk) at 9% (15 of 166) of sites. At  
260 least one <5 child was observed crawling on the ground or sitting on the ground playing in dirt or mud at  
261 24 sites, with a third of these observations (n=8) recording infants crawling or sitting in the dirt. Children  
262 were observed playing with objects in the dirt at 4 sites. One infant and one child ~12-24 months were  
263 observed playing in a water puddle or drain water at 2 sites. Children were seen mouthing their hands at  
264 3 sites (multiple ages), and one infant was eating soil at 1 site. Open defecation was not observed.

265 **Microbial Detection, Concentration, and Neighborhood-Level Diversity in Kenya.** A total of 185 public  
266 site soil and 51 water samples were collected and tested for enterococcus and enteric pathogens.  
267 Enterococcus colonies were isolated from 100% of surface water samples and 74.6% of soil samples  
268 (Figure 1). At least one type of enteric pathogen was detected in 92% of water samples and 82% of soil

269 samples. This included twenty gene markers representing sixteen types of enteric pathogens in water  
270 and twenty gene markers representing seventeen types of pathogens in soil. The most common  
271 pathogens in soil were *Cryptosporidium* (67.0%), *Giardia* (17.8%), ETEC (13.5%), EAEC (10.8%), and EPEC  
272 (8.6%). The most common pathogens in water were *Cryptosporidium* (70.0%), EAEC (58.0%), ETEC  
273 (56.0%), EPEC (46%), and human adenovirus (36.0%). The relative abundance of different biological  
274 phyla and types of pathogens differed between pooled soil and water samples. Protozoan organisms  
275 accounted for 61.2% of microbial organisms in soil, followed by 30.6% pathogenic bacteria, 5.8%  
276 helminths, and 2.3% viruses (Figure 2). In contrast, pathogenic bacteria were more abundant in water  
277 (57.5%), followed by 26.9% protozoans, 5.8% viruses, and 2.3% helminths.

278 Enterococcus concentrations were about three logs higher in concentration in water than in soil  
279 (Table S3). Mean pathogen concentrations in positive samples were two to five logs higher than the limit  
280 of detection, although wide standard deviations for all pathogens reflected variability in concentration  
281 ranges (Table S3). Concentrations of pathogens in one gram of soil were consistently one to two logs  
282 higher in concentration than in 1 mL of surface water. In soil, the adenovirus 40/41 hexon, ETEC *eltB*,  
283 *Salmonella invA*, and STEC *stx2* genes were all detected at  $> 7.0 \log_{10}$  concentration per gram, whereas  
284 *C. difficile tcdB* was the lowest concentration at  $4.2 \log_{10}$ . In surface water, adenovirus 40/41 hexon was  
285 the highest at  $6.6 \log_{10}$  per mL, followed by EAEC *aaiC*, ETEC *eltB*, and STEC *stx1* and *stx2* genes at  $5.6$   
286  $\log_{10}$  per mL. Astrovirus capsid, Norovirus GI/GII ORF1-2, and *Campylobacter cadF* at  $< 3 \log_{10}$  per mL.

287 **Within-site Enteric Pathogen Diversity.** Two or more enteric pathogens were co-detected in 35%  
288 (64/185) of soil samples (median 1; range 0 - 7), and 69% (35/51) of surface water samples (median 4;  
289 range 0 - 10) (Figure 3). Patterns of pathogen co-detection were heterogeneous, with only 2 patterns  
290 (*Cryptosporidium spp.*, EPEC, ETEC, EAEC) and (*Cryptosporidium spp.*, *Giardia spp.*, ETEC, EAEC)  
291 reoccurring twice at a total of two sites each among the 35 water samples with  $\geq 2$  pathogens detected.  
292 Of the 64 soil samples with  $\geq 2$  pathogens co-detected, *Cryptosporidium spp.*, ETEC, and EAEC occurred

293 three times, *Cryptosporidium spp.*, *Giardia spp.*, and ETEC twice, and the remainder were various  
294 combinations of *Cryptosporidium spp.* with other types of pathogens. The *Cryptosporidium spp.* assays  
295 might have detected species that do not typically infect humans<sup>30</sup>. If *Cryptosporidium spp.* results are  
296 excluded from the analysis, then 44% (82/185) of soils and 80% (41/51) contained at least one  
297 pathogen, and two or more enteric pathogens were co-detected in 18% (33/185) of soil samples  
298 (median 0; range 0 - 6), and 65% (33/51) of surface water samples (median 3; range 0 - 9).

299 **Association between Sanitary Conditions and Enterococcus contamination.** Observation of feces,  
300 indicators of human open defecation, domestic animals, presence and poor condition of latrines, and  
301 flies were not associated with the presence or increased concentration of enterococcus indicator  
302 bacterial of fecal contamination of water and soil, after adjusting for development of the terrain,  
303 relative humidity, altitude, ambient temperature, and type of sample (Table 2).

304 **Association between Sanitation Conditions and Pathogen Diversity.** Observation of feces, indicators of  
305 human open defecation, domestic animals, presence and poor condition of latrines, and flies were not  
306 associated with the detection of any type of enteric pathogen, after adjusting for development of the  
307 terrain, relative humidity, altitude, ambient temperature, and type of sample (Table 3). However, the  
308 presence of domestic animals was significantly associated with increased diversity in enteric pathogens  
309 in fully adjusted models. Observation of feces, indicators of human open defecation, presence and poor  
310 condition of latrines, and flies were not associated with increased diversity. Sub-analysis of animal types  
311 in the fully adjusted model found that chickens (adjOR=1.64; 1.22, 2.22), cattle (adjOR=1.36; 1.08, 1.72),  
312 and goats and sheep (adjOR=1.39; 1.00, 1.94) were associated with increased pathogen diversity, while  
313 pigs (adjOR=0.80; 0.36, 1.77) and dogs (adjOR=1.20; 0.87, 1.65) were not significantly associated. No  
314 association was observed between different fecal sources and increased concentration of individual  
315 types of pathogens (not shown).

316 **Spatial Clustering of sites with High Pathogen Diversity.** High pathogen diversity was not statistically  
317 associated with lower distance between pairs of sites ( $p$ -value = 0.22).

318

## 319 **DISCUSSION**

320 This study confirmed that neighborhood landscapes in Kisumu, Kenya are contaminated by  
321 many enteric virus, bacteria, protozoan, and helminth enteric pathogen species, at both neighborhood  
322 and localized (within 25 meter radius) levels of spatial scale. At least one type of pathogen was detected  
323 at 80% of public sites, with one third of soil and three-quarters of surface water co-contaminated by  
324 multiple taxa of enteric pathogens. Even if *Cryptosporidium* detections are excluded, in the event that  
325 the species detected were not human-infective, multiple pathogens were still detected in one-fifth of  
326 soils and two-thirds of waters. This evidence addresses major knowledge gaps about enteric pathogen  
327 co-occurrence patterns in the environment, especially for public areas that are “ground zero” for  
328 contamination from open defecation and animal feces. The most abundant types of pathogen taxa  
329 varied for soil and surface water, with protozoans being most abundant in soil and pathogenic bacteria  
330 being most abundant in surface water. Domestic animals (specifically chickens, cows, and goats/sheep)  
331 – rather than human sources of fecal waste – were associated with increased pathogen diversity,  
332 whereas enterococcus bacteria, the presence of any pathogen type, and concentrations of individual  
333 enteric pathogen taxa were not significantly associated with human and animal sources of fecal  
334 contamination. Finally, this study validated that <5yr old children play in these contaminated public  
335 settings, confirming that child exposure to and infection by pathogens in public areas is plausible.  
336 Therefore, interventions that prevent neighborhood-level animal fecal contamination may be necessary  
337 for reducing enteric disease burden in < 5yr children in Kisumu. These interventions could include



338 creation of protected child play spaces with finished, cleanable floors, promoting the safe disposal of  
339 animal waste, or animal penning designs that safely collect animal waste away from children.

340           These findings confirmed our hypothesis that pathogen diversity in Kisumu neighborhoods  
341 would mirror the leading etiologic causes of symptomatic and asymptomatic childhood infections in  
342 low-income, high-burden endemic countries in Asia and Africa<sup>1, 2, 28</sup>. Many of the most common causes  
343 of moderate to severe diarrhea in children in Kenya (*Cryptosporidium spp.*, ETEC ST, adenovirus 40/41,  
344 *C. jejuni*)<sup>1, 31</sup> were the most frequently detected in the environment in Kisumu, although Rotavirus and  
345 Shigella/EIEC were rare. This suggests that widespread contamination by those pathogens in the  
346 environment is responsible for causing enteric infection in children. Our findings also confirmed our  
347 hypothesis that multi-pathogen contamination of soil and water would be detected at locations where  
348 children play. This further suggests that children could ingest multiple pathogens during play in just one  
349 area outside the household. Pathogen diversity is a novel approach for characterizing environmental  
350 exposure risks in LICs, and for identifying potential fecal sources associated with environmental  
351 contamination. However, microbial community characterization has been used for decades to  
352 understand ecological health and to monitor the impact of natural or man-made actions on system  
353 function<sup>32-34</sup>. In public health, microbiome community characterization has become a platform for  
354 understanding human susceptibility to enteric infection, symptomology and severity of disease, and for  
355 understanding vaccine failure<sup>35, 36</sup>. A few studies have used the microbial community approach to  
356 understand the relationships between environmental microbiota, fecal indicator bacteria and  
357 pathogenic bacteria in surface water and soil, although did not examine infrastructure conditions driving  
358 this contamination<sup>37, 38</sup>. Rather than sequencing, we used customized multi-pathogen qPCR tools for  
359 disease-targeted detection of the viral, bacterial, protozoan, and helminthic causes of pediatric diarrhea  
360<sup>28</sup>. Additionally, we accounted for potential interrelated conditions underlying pathogen co-occurrence  
361 in our analysis, rather than treating pathogen occurrence as an isolated, independent event.

362           The inclusion of pathogen diversity as indicator of interrelated contamination conditions was  
363 important for understanding the relative intensity and determinants of contamination of public areas  
364 across Kisumu, as well as between Kenya and a reference site in Iowa. Consistent with prior studies,  
365 enterococcus were omnipresent in Kenya *and* Iowa soil and surface water, even though evidence of  
366 human fecal contamination was absent in Iowa, and animal feces was less common<sup>15</sup>. Evidence on fecal  
367 microbes in soil is limited, but our detection rates were similar to at least one other study<sup>39</sup>. The lack of  
368 association between human and animal fecal source risk factors with enterococci in Kenya reinforces  
369 that enterococcus indicators are not optimal tools for predicting or quantifying exposure to enteric  
370 pathogens or for fecal source tracking. An “any pathogen” indicator was also not statistically associated  
371 with fecal sources. However, the stark differences in overall pathogen detection frequencies between  
372 Kenya and an Iowa watershed impacted by farm and agriculture helped calibrate our expectations as to  
373 what contamination patterns should look like in a setting where open defecation is absent, and  
374 highlighted how alarming the pathogen detection levels in Kenya are by comparison. Sampling at  
375 different times, for example different seasons, or sampling from agriculturally-impacted areas in a  
376 tropical state (e.g. Florida), may have produced different results.

377           Neighborhood-level pathogen contamination in Kenya corresponded with the frequent  
378 observation of human and animal feces in public areas. These neighborhoods have low levels of  
379 household sanitation coverage and domestic animal ownership is common in Kisumu<sup>22, 23</sup>. We expected  
380 open defecation, dilapidated latrines, and domestic animals to be associated with pathogen diversity,  
381 given the evidence of their role in diarrheal in children<sup>40, 41</sup>. In spite of widespread human feces in  
382 Kisumu, only domestic animals were associated with increased diversity in pathogens in the  
383 environment. Domestic animal reservoirs may contribute to pediatric disease burden by facilitating a  
384 rapid turnover in the types of pathogen species that children are exposed to, a situation where  
385 exposure-based immunity provides little benefit. We are unaware of evidence of this hypothesis, but

386 theoretically domestic animals may be more important disease vectors than humans. First animals  
387 (dogs, chickens, pigs, ducks) are more likely to be coprophagous (eat feces than humans, and ergo have  
388 higher risks of infection <sup>42</sup>. Second, animals are less likely to be treated for diarrheal symptoms of enteric  
389 infection than children <sup>43</sup>, and ergo shed pathogens for longer due to persistent infection. Third, dozens  
390 of animals may be kept by a household versus one or a few children <sup>22</sup>, ergo density of potential animal  
391 disease vectors is higher than child vectors. The lack of association between human sanitation and  
392 pathogen presence or diversity might reflect either lower levels of pathogen infection rates in humans,  
393 relative to animals. We think that the lack of association with all sanitary conditions and pathogen  
394 concentration is due to ecological conditions (humidity, UV, properties of soil) playing a strong  
395 mediating role on pathogen persistence and fate in the environment.

396         This study has several limitations. It is cross-sectional and cannot establish the direction of  
397 causality. Pathogen contamination could be a proxy for sites with more abundant animal food sources  
398 (feces, grassland), which thus attract domestic animals or flies to those sites. Even if that is the case, this  
399 is likely a circular relationship that involves animals defecating at the feeding site. Our observational  
400 criteria may not have distinguished well between unsafe, that is deteriorated and/or sometimes unused,  
401 latrines and safe latrines, that is latrines which effectively contain excreta and prevent release into the  
402 environment. Without an in-depth inspection of the underground integrity of the latrine pits, the degree  
403 to which excreta is effectively contained cannot be assessed. Our sample size may have not provided  
404 sufficient power to detect important associations between fecal sources and microbial outcomes. There  
405 was no prior source of information to predict frequencies of enteric pathogen co-occurrence, especially  
406 for nineteen enteric pathogens.

407         Inherent heterogeneity in pathogen distributions in the environment and insufficient spacing  
408 scale between sites (sites too far apart) may explain why we did not find many repeat patterns of  
409 pathogen co-occurrence or spatial “hot zones”. Such patterns would provide even more precise metrics

410 for linking widespread contamination to specific fecal sources, compared to the relatively simple  
411 approach of simply summing the number of pathogen types detected. In the handful of repeat patterns  
412 noted, the pathogens detected were the most common overall, suggesting presence is more a function  
413 of probability and sample size than impacts from types of fecal sources. In particular, the most common  
414 pathogen gene detected was *Cryptosporidium spp.* 18S, which could indicate contamination by species  
415 rarely detected in humans (*C. meleagridis*, *C. canis*, *C. felis*, *C. muris*, *C. suis*), rather than the *C. hominus*  
416 or *C. parvum* species commonly linked with human infection<sup>30</sup>. This may overestimate the abundance of  
417 clinically-relevant pathogens in public areas of Kisumu, although even after excluding *Cryptosporidium*-  
418 positive counts, pathogen detection and co-detection was still very high. Research involving larger  
419 numbers of environmental samples is needed to understand whether co-occurrence patterns of specific  
420 groups of pathogens is common. Either way, the substantial amount of heterogeneity in pathogen  
421 detection patterns highlights the risk for misclassification of environmental exposures if the presence of  
422 an individual pathogen type is used as a proxy for the presence of any fecal pathogens, or fecal  
423 contamination overall. While some associations with trends towards significance may surpass  
424 significance cutoff thresholds with larger sample sizes, we are confident that it wouldn't change the  
425 overall conclusion that domestic animals are important contributors to multi-pathogen contamination in  
426 public domains of Kisumu.

427         Last, detection of pathogen DNA or RNA in soil and water by PCR does not confirm viability or  
428 infectivity of pathogens. PCR methods may detect extracellular DNA or intact, but non-infectious cells.  
429 By filtering sample elute through a 0.45  $\mu\text{m}$  pore size filter, our sampling methods may have removed  
430 some extracellular material, although non-viable cellular DNA or RNA could still be trapped on the filter.  
431 PCR was chosen as the most systematic way to detect viral, bacterial, protozoan and helminth classes of  
432 fecal pathogens, many of which have no alternative detection methods. Culture-based assays could  
433 have been used for some bacteria, but may have been equally inaccurate due to the presence of viable

434 but non-recoverable bacteria (e.g. *Vibrio cholerae*, *Shigella dysenteriae*, *Camylobacter jejuni*, and  
435 Enterotoxigenic *E. coli*)<sup>17, 44-46</sup>. Since we did not adopt a pre-enrichment step, it is possible that our  
436 enterococcus concentration data underestimates actual live concentration of enterococcus in soil or  
437 water. This also would introduce inter-method variability in detection methods across viral, bacterial,  
438 protozoan, and helminth taxa. Adjusting concentrations for pathogen decay under these ecological  
439 conditions may improve the accuracy of estimated PCR concentrations. However, there is no such  
440 information for many enteric pathogens included on our assay, so such an approach could not be  
441 systematic. Also problematic is that feces contamination by animals and humans in Kisumu is ongoing.  
442 Failing to counter-adjust pathogen concentration estimates for periodic reintroduction of pathogens in  
443 the environment would underestimate final concentration estimates. While some detected pathogen  
444 DNA detected in Kisumu may be non-viable, it is more likely to be relatively recent contamination  
445 because free and cellular DNA/RNA is typically degraded by native soil or water microbiota within the  
446 matter of days or weeks<sup>47-52</sup>.

447         In conclusion, this study addresses two neglected realms in the WASH sector. First, we  
448 demonstrate that public domains are highly contaminated and may pose a substantial risk of enteric  
449 pathogen exposure for children. Young children will continue to play in soil and surface water in the  
450 public domain because they live in crowded conditions and at a certain age are drawn to engage in  
451 social play with their peers. In light of this, WASH interventions should invest in improving public  
452 sanitary conditions to prevent child exposure to enteric pathogens, and possibly to reduce the childhood  
453 enteric disease burden that persists in many low and middle income countries. Second, even if high  
454 levels of household WASH coverage are achieved, and human open defecation is eliminated, a high  
455 baseline level of enteric disease caused by contact with animal feces will persist. Domestic animal  
456 management must be included in the WASH agenda to reduce pathogen contamination at the  
457 neighborhood level, and potentially within households as well. Forthcoming research by this group is

458 examining the generalizability of these findings in other geographical settings using improved  
459 assessment methods. Yet, the conditions in Kisumu – low-income urban settlements with high  
460 population density and limited public health infrastructure – are common in low-income settlements  
461 around the world, suggesting pervasive pathogen contamination of the environment in such settings is a  
462 universal problem.

463

#### 464 **Supplementary Documents Table of Contents**

- 465 A. Figure S1. Location of public domain sampling sites in three neighborhoods of Kisumu, Kenya.
- 466 B. Assessment of RT-PCR inhibition
- 467 C. Table S1. Number of soil and surface water samples from Kenya with evidence of inhibition of  
468 the QuantiFast Internal Control.
- 469 D. RT-PCR Standard curves
- 470 E. Table S2. Source of reference DNA or RNA use for standard curves in this study.
- 471 F. Back calculations of final concentrations.
- 472 G. Microbial Detection and Diversity in Iowa watershed.
- 473 H. Figure S2. Detection of *E. coli* bacteria, bacterial 16S DNA, and enteric virus, bacteria, protozoan,  
474 or helminth pathogens in soil (A) and water (B) from an agricultural Iowa watershed.
- 475 I. Table S3. Concentration of enterococcus indicator bacteria and enteric pathogen DNA and RNA  
476 gene copy in soil and surface water from Kisumu neighborhood public domains.

477

#### 478 **ACKNOWLEDGMENTS:**

479 This study was supported by start-up funding from the University of Iowa to PI Baker, a career  
480 development award from the University of Iowa Environmental Health Sciences Research Center (NIH

481 P30 ES005605), and a pilot grant from the University of Iowa Water Sustainability Initiative. We  
482 appreciate the support of Lucy DesJardin and Nancy Hall at the Iowa State Hygiene laboratory who  
483 allowed our group access to a ViiA7 thermocycler, and Julius Ochieno, Lily Lukorito, Horace Phoxydee,  
484 Mandy Larson, Lena Swander, Gocale Nicoue, and Kevin Tsai assisted with the collection of data,  
485 development of assays, or data management. Craig Ellermeier at the University of Iowa generously  
486 donated several strains of *Clostridium difficile* for development of standard controls.

487

488 All authors declare that they have no competing financial interests in the publication of this study.

489

#### 490 **CONTRIBUTIONS**

491 Conceived of this study: KKB, ASG. Acquired funding: KKB, ASG. Designed study or study tools: KKB, RS,  
492 OC, JM. Collected data: KKB, RS, JM. Statistical analysis: DS, RS, KKB. Drafted manuscript: KKB. Edited  
493 manuscript for intellectual content: all authors. Provided final approval of the version to be published:  
494 all co-authors.

495

#### 496 **REFERENCES**

- 497 1. Kotloff, K. L.; Nataro, J. P.; Blackwelder, W. C.; Nasrin, D.; Farag, T. H.; Panchalingam, S.; Wu, Y.;  
498 Sow, S. O.; Sur, D.; Breiman, R. F.; Faruque, A. S.; Zaidi, A. K.; Saha, D.; Alonso, P. L.; Tamboura, B.;  
499 Sanogo, D.; Onwuchekwa, U.; Manna, B.; Ramamurthy, T.; Kanungo, S.; Ochieng, J. B.; Omore, R.;  
500 Oundo, J. O.; Hossain, A.; Das, S. K.; Ahmed, S.; Qureshi, S.; Quadri, F.; Adegbola, R. A.; Antonio, M.;  
501 Hossain, M. J.; Akinsola, A.; Mandomando, I.; Nhampossa, T.; Acacio, S.; Biswas, K.; O'Reilly, C. E.; Mintz,  
502 E. D.; Berkeley, L. Y.; Muhsen, K.; Sommerfelt, H.; Robins-Browne, R. M.; Levine, M. M., Burden and  
503 aetiology of diarrhoeal disease in infants and young children in developing countries (the Global Enteric  
504 Multicenter Study, GEMS): a prospective, case-control study. *Lancet* **2013**, *382*, (9888), 209-22.
- 505 2. Platts-Mills, J. A.; Babji, S.; Bodhidatta, L.; Gratz, J.; Haque, R.; Havt, A.; McCormick, B. J.;  
506 McGrath, M.; Olortegui, M. P.; Samie, A.; Shakoor, S.; Mondal, D.; Lima, I. F.; Hariraju, D.; Rayamajhi, B.  
507 B.; Qureshi, S.; Kabir, F.; Yori, P. P.; Mufamadi, B.; Amour, C.; Carreon, J. D.; Richard, S. A.; Lang, D.;

- 508 Bessong, P.; Mduma, E.; Ahmed, T.; Lima, A. A.; Mason, C. J.; Zaidi, A. K.; Bhutta, Z. A.; Kosek, M.;  
509 Guerrant, R. L.; Gottlieb, M.; Miller, M.; Kang, G.; Houpt, E. R.; Investigators, M.-E. N., Pathogen-specific  
510 burdens of community diarrhoea in developing countries: a multisite birth cohort study (MAL-ED).  
511 *Lancet Glob Health* **2015**, *3*, (9), e564-75.
- 512 3. Pickering, A. J.; Julian, T. R.; Marks, S. J.; Mattioli, M. C.; Boehm, A. B.; Schwab, K. J.; Davis, J.,  
513 Fecal contamination and diarrheal pathogens on surfaces and in soils among Tanzanian households with  
514 and without improved sanitation. *Environ Sci Technol* **2012**, *46*, (11), 5736-43.
- 515 4. Mattioli, M. C.; Pickering, A. J.; Gilsdorf, R. J.; Davis, J.; Boehm, A. B., Hands and water as vectors  
516 of diarrheal pathogens in Bagamoyo, Tanzania. *Environmental science & technology* **2013**, *47*, (1), 355-  
517 63.
- 518 5. Odagiri, M.; Schriewer, A.; Daniels, M. E.; Wuertz, S.; Smith, W. A.; Clasen, T.; Schmidt, W. P.; Jin,  
519 Y.; Torondel, B.; Misra, P. R.; Panigrahi, P.; Jenkins, M. W., Human fecal and pathogen exposure  
520 pathways in rural Indian villages and the effect of increased latrine coverage. *Water Res* **2016**, *100*, 232-  
521 44.
- 522 6. Humphrey, J. H.; Prendergast, A. J.; Ntozini, R.; Gladstone, M.; Colford, J. In *The Sanitation*  
523 *Hygiene Infant Nutrition Efficacy (SHINE) Trial*, American Society for Tropical Medicine and Hygiene  
524 Annual Meeting, Baltimore, MD, November 7, 2017, 2017; American Society for Tropical Medicine and  
525 Hygiene: Baltimore, MD, 2017.
- 526 7. Null, C.; Stewart, C. P.; Pickering, A. J.; Dentz, H. N.; Arnold, B. F.; Arnold, C. D.; Benjamin-Chung,  
527 J.; Clasen, T.; Dewey, K. G.; Fernald, L. C. H.; Hubbard, A. E.; Kariger, P.; Lin, A.; Luby, S. P.; Mertens, A.;  
528 Njenga, S. M.; Nyambane, G.; Ram, P. K.; Colford, J. M., Jr., Effects of water quality, sanitation,  
529 handwashing, and nutritional interventions on diarrhoea and child growth in rural Kenya: a cluster-  
530 randomised controlled trial. *Lancet Glob Health* **2018**, *6*, (3), e316-e329.
- 531 8. Luby, S. P.; Rahman, M.; Arnold, B. F.; Unicomb, L.; Ashraf, S.; Winch, P. J.; Stewart, C. P.; Begum,  
532 F.; Hussain, F.; Benjamin-Chung, J.; Leontsini, E.; Naser, A. M.; Parvez, S. M.; Hubbard, A. E.; Lin, A.;  
533 Nizame, F. A.; Jannat, K.; Ercumen, A.; Ram, P. K.; Das, K. K.; Abedin, J.; Clasen, T. F.; Dewey, K. G.;  
534 Fernald, L. C.; Null, C.; Ahmed, T.; Colford, J. M., Jr., Effects of water quality, sanitation, handwashing,  
535 and nutritional interventions on diarrhoea and child growth in rural Bangladesh: a cluster randomised  
536 controlled trial. *Lancet Glob Health* **2018**, *6*, (3), e302-e315.
- 537 9. Medgyesi, D. N.; Brogan, J. M.; Sewell, D. K.; Creve-Coeur, J. P.; Kwong, L. H.; Baker, K. K., Where  
538 Children Play: Young child exposure to environmental hazards during play in public areas in a  
539 transitioning internally displaced persons community in Haiti. *International Journal of Environmental*  
540 *Research and Public Health* **2018**, *15*, (8), 1682.
- 541 10. Harwood, V. J.; Levine, A. D.; Scott, T. M.; Chivukula, V.; Lukasik, J.; Farrah, S. R.; Rose, J. B.,  
542 Validity of the indicator organism paradigm for pathogen reduction in reclaimed water and public health  
543 protection. *Appl Environ Microbiol* **2005**, *71*, (6), 3163-70.
- 544 11. Ferguson, A. S.; Layton, A. C.; Mailloux, B. J.; Culligan, P. J.; Williams, D. E.; Smartt, A. E.; Sayler,  
545 G. S.; Feighery, J.; McKay, L. D.; Knappett, P. S.; Alexandrova, E.; Arbit, T.; Emch, M.; Escamilla, V.;  
546 Ahmed, K. M.; Alam, M. J.; Streatfield, P. K.; Yunus, M.; van Geen, A., Comparison of fecal indicators with  
547 pathogenic bacteria and rotavirus in groundwater. *Sci Total Environ* **2012**, *431*, 314-22.
- 548 12. Haramoto, E.; Katayama, H.; Oguma, K.; Yamashita, H.; Tajima, A.; Nakajima, H.; Ohgaki, S.,  
549 Seasonal profiles of human noroviruses and indicator bacteria in a wastewater treatment plant in Tokyo,  
550 Japan. *Water Sci Technol* **2006**, *54*, (11-12), 301-8.
- 551 13. Verbyla, M. E.; Iriarte, M. M.; Mercado Guzman, A.; Coronado, O.; Almanza, M.; Mihelcic, J. R.,  
552 Pathogens and fecal indicators in waste stabilization pond systems with direct reuse for irrigation: Fate  
553 and transport in water, soil and crops. *Sci Total Environ* **2016**, *551-552*, 429-37.
- 554 14. Desmarais, T. R.; Solo-Gabriele, H. M.; Palmer, C. J., Influence of soil on fecal indicator organisms  
555 in a tidally influenced subtropical environment. *Appl Environ Microbiol* **2002**, *68*, (3), 1165-72.



- 556 15. Byappanahalli, M. N.; Nevers, M. B.; Korajkic, A.; Staley, Z. R.; Harwood, V. J., Enterococci in the  
557 environment. *Microbiol Mol Biol Rev* **2012**, *76*, (4), 685-706.
- 558 16. Islam, M. S.; Talukder, K. A.; Khan, N. H.; Mahmud, Z. H.; Rahman, M. Z.; Nair, G. B.; Siddique, A.  
559 K.; Yunus, M.; Sack, D. A.; Sack, R. B.; Huq, A.; Colwell, R. R., Variation of toxigenic *Vibrio cholerae* O1 in  
560 the aquatic environment of Bangladesh and its correlation with the clinical strains. *Microbiol Immunol*  
561 **2004**, *48*, (10), 773-7.
- 562 17. Alam, M.; Sultana, M.; Nair, G. B.; Siddique, A. K.; Hasan, N. A.; Sack, R. B.; Sack, D. A.; Ahmed, K.  
563 U.; Sadique, A.; Watanabe, H.; Grim, C. J.; Huq, A.; Colwell, R. R., Viable but nonculturable *Vibrio*  
564 *cholerae* O1 in biofilms in the aquatic environment and their role in cholera transmission. *Proc Natl Acad*  
565 *Sci U S A* **2007**, *104*, (45), 17801-6.
- 566 18. KNBS *The 2009 Kenya Population and Housing Census*; Kenyan National Bureau of Statistics:  
567 Kenya, 2010.
- 568 19. Habitat, U., Situation analysis of informal settlements in Kisumu. *Cities Without Slums Sub-*  
569 *Regional Programme for Eastern and Southern Africa. Kenya Slum Upgrading Programme* **2005**.
- 570 20. Kenya Slum Update Programme; UN Human Settlements Programme *Situational Analysis of*  
571 *Informal Settlements in Kisumu*; Nairobi, Kenya, 2005.
- 572 21. Statistics, K. N. B. o. *Nyanza Province Multiple Indicator Cluster Survey 2011*; Kenyan National  
573 Bureau of Statistics: Nairobi, Kenya, 2013.
- 574 22. Barnes, A. N.; Mumma, J.; Cumming, O., Role, ownership and presence of domestic animals in  
575 peri-urban households of Kisumu, Kenya. *Zoonoses Public Health* **2018**, *65*, (1), 202-214.
- 576 23. Simiyu, S.; Swilling, M.; Cairncross, S.; Rheingans, R., Determinants of quality of shared  
577 sanitation facilities in informal settlements: case study of Kisumu, Kenya. *BMC Public Health* **2017**, *17*,  
578 (1), 68.
- 579 24. EPA), U. S. E. P. A. U. S. Recreational water quality criteria.  
580 <http://water.epa.gov/scitech/swguidance/standards/criteria/health/recreation/index.cfm> (1/26/2018),
- 581 25. Griffith, J. F.; Cao, Y.; McGee, C. D.; Weisberg, S. B., Evaluation of rapid methods and novel  
582 indicators for assessing microbiological beach water quality. *Water Res* **2009**, *43*, (19), 4900-7.
- 583 26. Ahmed, W.; Harwood, V. J.; Gyawali, P.; Sidhu, J. P.; Toze, S., Comparison of concentration  
584 methods for quantitative detection of sewage-associated viral markers in environmental waters. *Appl*  
585 *Environ Microbiol* **2015**, *81*, (6), 2042-9.
- 586 27. Haramoto, E.; Katayama, H.; Asami, M.; Akiba, M., Development of a novel method for  
587 simultaneous concentration of viruses and protozoa from a single water sample. *J Virol Methods* **2012**,  
588 *182*, (1-2), 62-9.
- 589 28. Liu, J.; Gratz, J.; Amour, C.; Kibiki, G.; Becker, S.; Janaki, L.; Verweij, J. J.; Taniuchi, M.; Sobuz, S.  
590 U.; Haque, R.; Haverstick, D. M.; Houpt, E. R., A laboratory-developed TaqMan Array Card for  
591 simultaneous detection of 19 enteropathogens. *J Clin Microbiol* **2013**, *51*, (2), 472-80.
- 592 29. Ishii, S.; Kitamura, G.; Segawa, T.; Kobayashi, A.; Miura, T.; Sano, D.; Okabe, S., Microfluidic  
593 quantitative PCR for simultaneous quantification of multiple viruses in environmental water samples.  
594 *Appl Environ Microbiol* **2014**, *80*, (24), 7505-11.
- 595 30. Stroup, S. E.; Roy, S.; McHele, J.; Maro, V.; Ntabaguzi, S.; Siddique, A.; Kang, G.; Guerrant, R. L.;  
596 Kirkpatrick, B. D.; Fayer, R.; Herbein, J.; Ward, H.; Haque, R.; Houpt, E. R., Real-time PCR detection and  
597 speciation of *Cryptosporidium* infection using Scorpion probes. *Journal of medical microbiology* **2006**,  
598 *55*, (Pt 9), 1217-22.
- 599 31. Liu, J.; Platts-Mills, J. A.; Juma, J.; Kabir, F.; Nkeze, J.; Okoi, C.; Operario, D. J.; Uddin, J.; Ahmed,  
600 S.; Alonso, P. L.; Antonio, M.; Becker, S. M.; Blackwelder, W. C.; Breiman, R. F.; Faruque, A. S.; Fields, B.;  
601 Gratz, J.; Haque, R.; Hossain, A.; Hossain, M. J.; Jarju, S.; Qamar, F.; Iqbal, N. T.; Kwambana, B.;  
602 Mandomando, I.; McMurry, T. L.; Ochieng, C.; Ochieng, J. B.; Ochieng, M.; Onyango, C.; Panchalingam,  
603 S.; Kalam, A.; Aziz, F.; Qureshi, S.; Ramamurthy, T.; Roberts, J. H.; Saha, D.; Sow, S. O.; Stroup, S. E.; Sur,

- 604 D.; Tamboura, B.; Taniuchi, M.; Tennant, S. M.; Toema, D.; Wu, Y.; Zaidi, A.; Nataro, J. P.; Kotloff, K. L.;  
605 Levine, M. M.; Houpt, E. R., Use of quantitative molecular diagnostic methods to identify causes of  
606 diarrhoea in children: a reanalysis of the GEMS case-control study. *Lancet* **2016**, *388*, (10051), 1291-301.
- 607 32. Balint, M.; Bahram, M.; Eren, A. M.; Faust, K.; Fuhrman, J. A.; Lindahl, B.; O'Hara, R. B.; Opik, M.;  
608 Sogin, M. L.; Unterseher, M.; Tedersoo, L., Millions of reads, thousands of taxa: microbial community  
609 structure and associations analyzed via marker genes. *FEMS Microbiol Rev* **2016**, *40*, (5), 686-700.
- 610 33. Xiao, X. Y.; Wang, M. W.; Zhu, H. W.; Guo, Z. H.; Han, X. Q.; Zeng, P., Response of soil microbial  
611 activities and microbial community structure to vanadium stress. *Ecotoxicol Environ Saf* **2017**, *142*, 200-  
612 206.
- 613 34. Brandt, K. K.; Amezcuita, A.; Backhaus, T.; Boxall, A.; Coors, A.; Heberer, T.; Lawrence, J. R.;  
614 Lazorchak, J.; Schonfeld, J.; Snape, J. R.; Zhu, Y. G.; Topp, E., Ecotoxicological assessment of antibiotics: A  
615 call for improved consideration of microorganisms. *Environ Int* **2015**, *85*, 189-205.
- 616 35. Harris, V. C.; Armah, G.; Fuentes, S.; Korpela, K. E.; Parashar, U.; Victor, J. C.; Tate, J.; de Weerth,  
617 C.; Giaquinto, C.; Wiersinga, W. J.; Lewis, K. D.; de Vos, W. M., Significant Correlation Between the Infant  
618 Gut Microbiome and Rotavirus Vaccine Response in Rural Ghana. *J Infect Dis* **2017**, *215*, (1), 34-41.
- 619 36. David, L. A.; Weil, A.; Ryan, E. T.; Calderwood, S. B.; Harris, J. B.; Chowdhury, F.; Begum, Y.;  
620 Qadri, F.; LaRocque, R. C.; Turnbaugh, P. J., Gut microbial succession follows acute secretory diarrhea in  
621 humans. *MBio* **2015**, *6*, (3), e00381-15.
- 622 37. Mwaikono, K. S.; Maina, S.; Sebastian, A.; Schilling, M.; Kapur, V.; Gwakisa, P., High-throughput  
623 sequencing of 16S rRNA Gene Reveals Substantial Bacterial Diversity on the Municipal Dumpsite. *BMC*  
624 *Microbiol* **2016**, *16*, (1), 145.
- 625 38. Sun, H.; He, X.; Ye, L.; Zhang, X. X.; Wu, B.; Ren, H., Diversity, abundance, and possible sources of  
626 fecal bacteria in the Yangtze River. *Appl Microbiol Biotechnol* **2017**, *101*, (5), 2143-2152.
- 627 39. Ben Said, L.; Klibi, N.; Dziri, R.; Borgo, F.; Boudabous, A.; Ben Slama, K.; Torres, C., Prevalence,  
628 antimicrobial resistance and genetic lineages of Enterococcus spp. from vegetable food, soil and  
629 irrigation water in farm environments in Tunisia. *J Sci Food Agric* **2016**, *96*, (5), 1627-33.
- 630 40. Penakalapati, G.; Swarthout, J.; Delahoy, M. J.; McAliley, L.; Wodnik, B.; Levy, K.; Freeman, M. C.,  
631 Exposure to Animal Feces and Human Health: A Systematic Review and Proposed Research Priorities.  
632 *Environ Sci Technol* **2017**, *51*, (20), 11537-11552.
- 633 41. Freeman, M. C.; Garn, J. V.; Sclar, G. D.; Boisson, S.; Medlicott, K.; Alexander, K. T.; Penakalapati,  
634 G.; Anderson, D.; Mahtani, A. G.; Grimes, J. E. T.; Rehfuess, E. A.; Clasen, T. F., The impact of sanitation  
635 on infectious disease and nutritional status: A systematic review and meta-analysis. *Int J Hyg Environ*  
636 *Health* **2017**, *220*, (6), 928-949.
- 637 42. Dock, G.; Bass, C. C., *Hookworm disease; etiology, pathology, diagnosis, prognosis, prophylaxis,*  
638 *and treatment*. C.V. Mosby Co.: St. Louis, 1910.
- 639 43. Kagira, J. M.; Kanyari, P. W., Questionnaire survey on urban and peri-urban livestock farming  
640 practices and disease control in Kisumu municipality, Kenya. *J S Afr Vet Assoc* **2010**, *81*, (2), 82-6.
- 641 44. Rollins, D. M.; Colwell, R. R., Viable but nonculturable stage of *Campylobacter jejuni* and its role  
642 in survival in the natural aquatic environment. *Appl Environ Microbiol* **1986**, *52*, (3), 531-8.
- 643 45. Islam, M. S.; Hossain, M. A.; Khan, S. I.; Khan, M. N.; Sack, R. B.; Albert, M. J.; Huq, A.; Colwell, R.  
644 R., Survival of *Shigella dysenteriae* type 1 on fomites. *J Health Popul Nutr* **2001**, *19*, (3), 177-82.
- 645 46. Lothigius, A.; Sjolting, A.; Svennerholm, A. M.; Bolin, I., Survival and gene expression of  
646 enterotoxigenic *Escherichia coli* during long-term incubation in sea water and freshwater. *J Appl*  
647 *Microbiol* **2010**, *108*, (4), 1441-9.
- 648 47. Romanowski, G.; Lorenz, M. G.; Sayler, G.; Wackernagel, W., Persistence of free plasmid DNA in  
649 soil monitored by various methods, including a transformation assay. *Appl Environ Microbiol* **1992**, *58*,  
650 (9), 3012-9.

- 651 48. Dejean, T.; Valentini, A.; Duparc, A.; Pellier-Cuit, S.; Pompanon, F.; Taberlet, P.; Miaud, C.,  
652 Persistence of environmental DNA in freshwater ecosystems. *PLoS One* **2011**, *6*, (8), e23398.
- 653 49. Bae, S.; Wuertz, S., Decay of host-associated Bacteroidales cells and DNA in continuous-flow  
654 freshwater and seawater microcosms of identical experimental design and temperature as measured by  
655 PMA-qPCR and qPCR. *Water Res* **2015**, *70*, 205-13.
- 656 50. Eichmiller, J. J.; Borchert, A. J.; Sadowsky, M. J.; Hicks, R. E., Decay of genetic markers for fecal  
657 bacterial indicators and pathogens in sand from Lake Superior. *Water Res* **2014**, *59*, 99-111.
- 658 51. Kim, M.; Wuertz, S., Survival and persistence of host-associated Bacteroidales cells and DNA in  
659 comparison with *Escherichia coli* and *Enterococcus* in freshwater sediments as quantified by PMA-qPCR  
660 and qPCR. *Water Res* **2015**, *87*, 182-92.
- 661 52. Rogers, S. W.; Donnelly, M.; Peed, L.; Kelty, C. A.; Mondal, S.; Zhong, Z.; Shanks, O. C., Decay of  
662 bacterial pathogens, fecal indicators, and real-time quantitative PCR genetic markers in manure-  
663 amended soils. *Appl Environ Microbiol* **2011**, *77*, (14), 4839-48.
- 664

665 Table 1. Ecological and Sanitation characteristics of public domains of three Kisumu neighborhoods.

Observed Sanitary Indicators	Nya-A, N=55	Nya-B, N=53	Obu., N=58	Total N=166
<b>Ecological Factors</b>				
Landscape developed with housing, n (%)	40 (72.7%)	39 (73.6%)	45 (77.6%)	124 (74.7%)
Landscape with open lots/fields, n (%)	15 (27.3%)	14 (26.4%)	13 (22.4%)	42 (25.3%)
Relative humidity, percent	61.6 (3.1)	60.1 (0.4)	62.8 (1.1)	61.6 (2.2)
Altitude, meters	1,147.3 (3.9)	1,145.8 (4.7)	1,162.1 (8.8)	1,152 (9.7)
Temperature, Celsius	24.4 (1.7)	23.4 (1.1)	22.1 (0.99)	23.3 (1.4)
Surface Water present, n (%)	15 (27.3%)	11 (20.8%)	14 (26.4%)	40 (24.1%)
<b>Potential Fecal Sources</b>				
Human/animal feces on ground, n (%)	37 (67.3%)	36 (67.9%)	44 (75.9%)	117 (70.5%)
Human open defecation indicators, n (%)	13 (23.6%)	19 (35.8%)	15 (25.9%)	47 (28.3%)
Domestic Animals present, n (%)	41 (75.6%)	42 (79.3%)	45 (77.6%)	128 (77.1%)
- Pig	2 (3.6%)	2 (3.8%)	2 (3.5%)	6 (3.6%)
- Chicken	22 (39.3%)	23 (43.4%)	34 (58.6%)	79 (47.3%)
- Cattle	8 (14.3%)	11 (20.8%)	12 (20.7%)	31 (18.6%)
- Dog	9 (16.1%)	13 (24.5%)	6 (10.3%)	28 (16.8%)
- Sheep/Goat	5 (8.9%)	12 (22.6%)	13 (22.4%)	30 (17.9%)
Flies Present, n (%)	51 (96.2%)*	50 (94.3%)	56 (96.6%)	157 (95.7%)*
Shared or Public Latrine On-site, n (%)	45 (81.8%)	44 (83%)	39 (67.2%)	130 (78.3%)
- Functional Condition	0 (0%)	9 (17.0%)	0 (0%)	9 (5.4%)

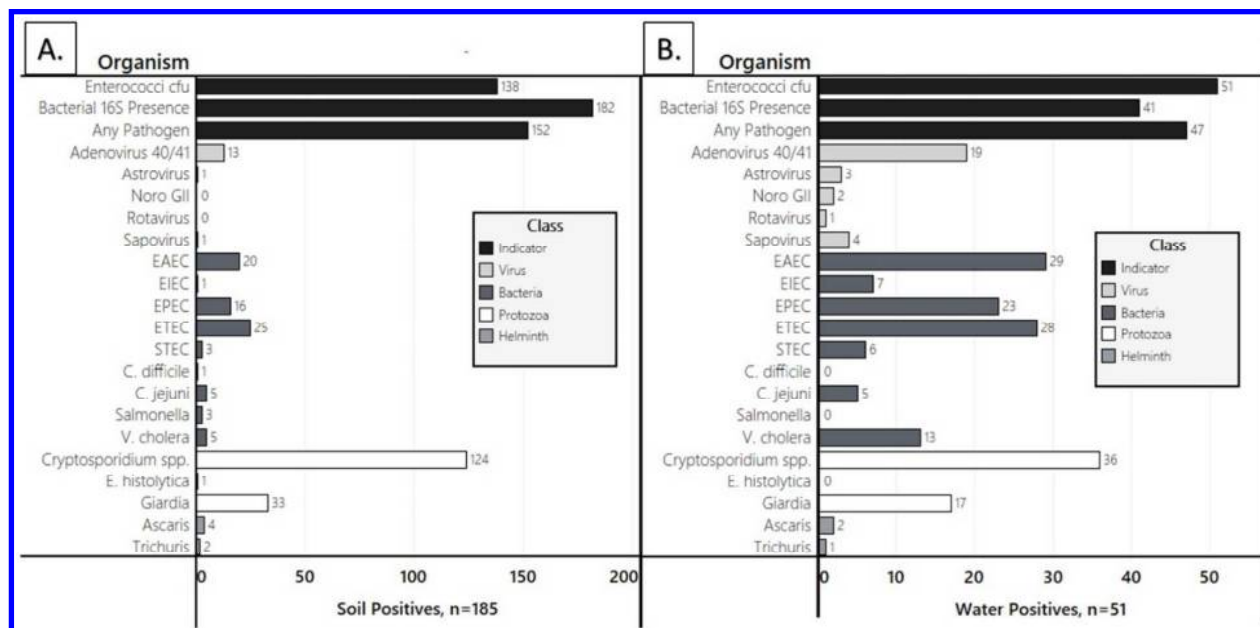
- Dilapidated Condition	44 (100%)	36 (67.9%)	39 (100%)	121 (72.9%)
Children under 5 present, n (%)	24 (43.6%)	17 (32.1%)	31 (53.5%)	72 (43.4%)

666 <sup>a</sup> Total of 145 single sample sites and 21 multi-sample (more than one soil sample) sites. Nyalenda A

667 (Nya-A); Nyalenda B (Nya-B); Obunga (Obu.).

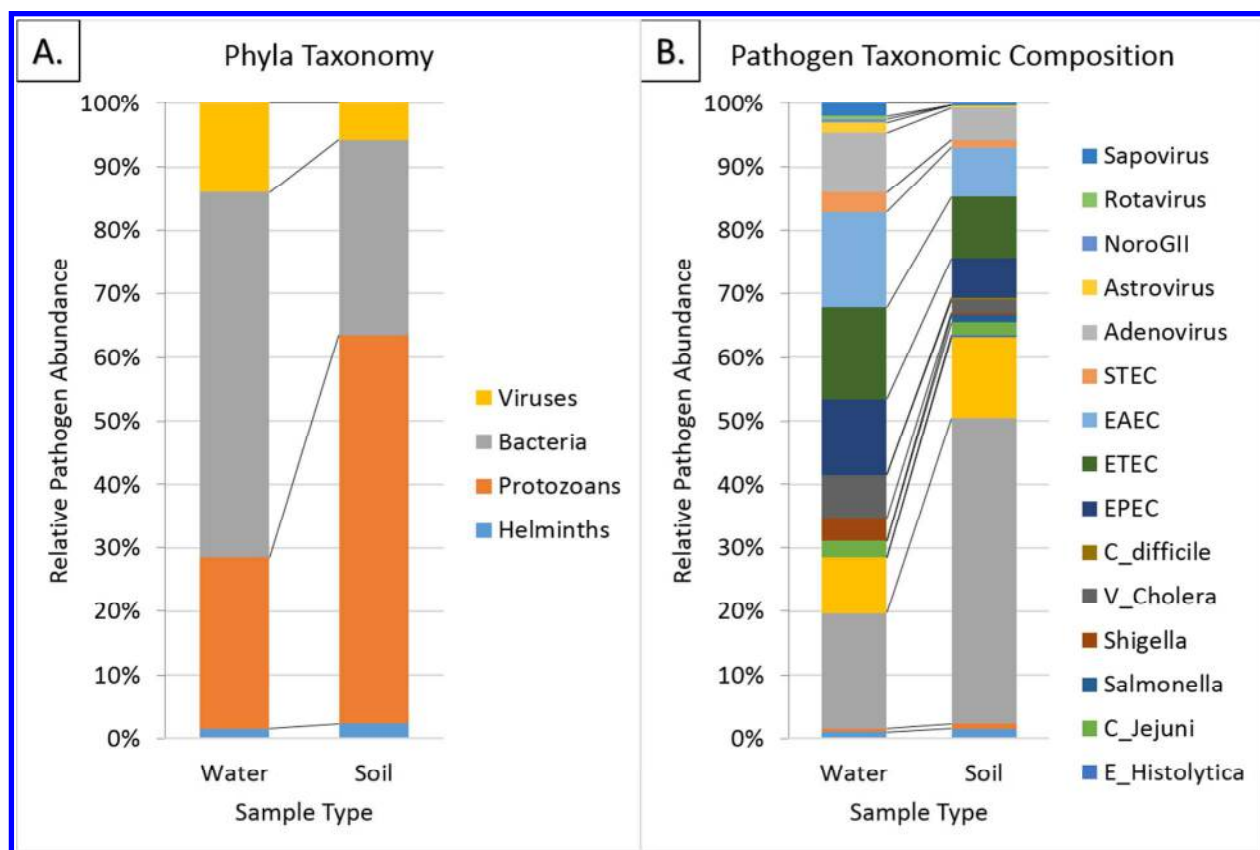
668 \* Denominator = 163.

669 Figure 1. Detection frequency for enterococci bacteria, bacterial 16S DNA, and enteric virus, bacteria,  
 670 protozoan, or helminth pathogens in soil (A) and water (B) from Kisumu neighborhoods.



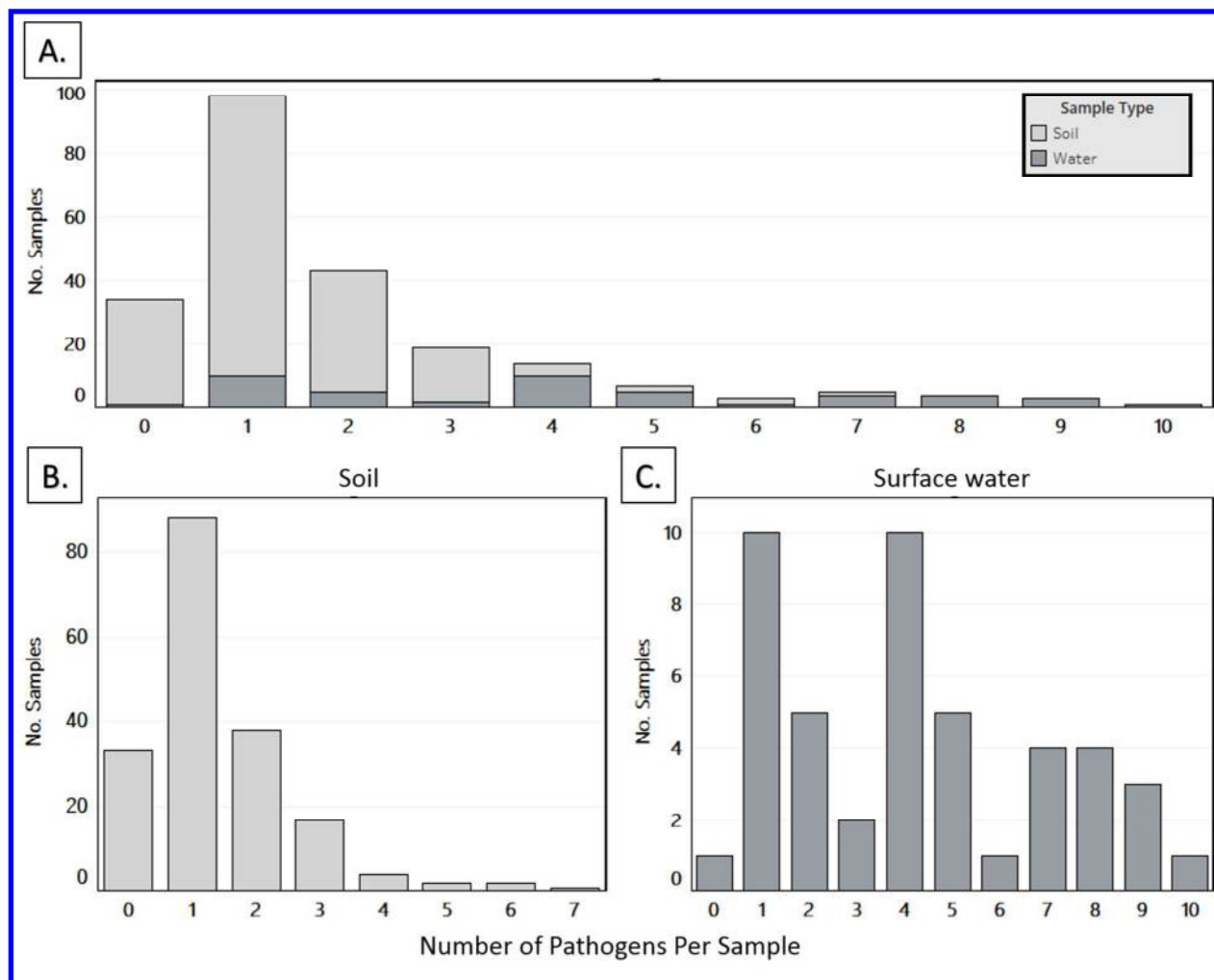
671

672 Figure 2. Relative abundance of pathogen gene copies for phylogenetic groups (A) and categories of  
 673 enteric pathogens (B) in soil and water from Kisumu neighborhoods.



674

675 Figure 3. Histogram of diversity in enteric pathogens detected in soil or surface water combined (A), soil  
676 (B), and surface water (C) from Kisumu neighborhoods.



677



678 Table 2. Association between human sanitation and animal feces sources and the presence and  
 679 concentration of enterococcus in soil from public domains from Kisumu neighborhood public domains.

Presence of Enterococcus			
Exposure	% ( <i>n</i> positive/ <i>N</i> )	Unadj. OR (95% C.I.)	Adj. OR (95% C.I.)
Observed feces on ground	80.7% (125/155)	2.67 (0.41, 17.44)	2.42 (0.62, 9.45)
None	76.1% (54/71)	Ref.	Ref.
Observed open defecation indicators	71.0% (44/62)	1.42 (0.31, 6.55) <sup>b</sup>	0.86 (0.22, 3.28)
None	82.3% (135/164)	Ref.	Ref.
Domestic Animals	83.0% (146/176)	2.88 (0.35, 24.03)	3.42 (0.69, 17.03)
None	66.0% (33/50)	Ref.	Ref.
Flies	79.9% (171/214)	1.73 (0.11, 27.31)	0.72 (0.05, 11.39)
None	57.1% (4/7)	Ref.	Ref.
Latrine condition - No latrines	71.1% (32/45)	Ref.	Ref.
Latrine condition - Good condition	66.7% (8/12)	0.78 (0.10, 5.85)	0.59 (0.05, 7.40)
Latrine condition - Bad condition	82.5% (139/169)	1.07 (0.19, 6.03)	1.03 (0.19, 5.56)
Log <sub>10</sub> Concentration of Enterococcus			
Exposure	Mean (SD)	Unadj. RR (95% C.I.)	Adj. RR (95% C.I.)
Observed feces on ground	2.5 (2.0)	1.65 (0.92, 2.96)	1.25 (0.66, 2.37)
None	2.4 (2.1)	Ref.	Ref.
Observed open defecation indicators	2.1 (2.0)	1.63 (0.87, 3.05) <sup>b</sup>	1.18 (0.60, 2.33)
None	2.6 (2.0)	Ref.	Ref.
Domestic Animals	2.6 (2.0)	1.82 (0.86, 3.85)	1.50 (0.63, 3.56)
None	2.0 (2.1)	Ref.	Ref.

Flies	2.5 (2.0)	<b>3.02 (1.39, 6.56)</b>	1.88 (0.74, 4.76)
None	0.6 (0.9)	Ref.	Ref.
Latrine condition - No latrines	1.9 (2.0)	Ref.	Ref.
Latrine condition - Good condition	1.2 (1.6)	0.67 (0.23, 1.94)	0.67 (0.22, 2.09)
Latrine condition - Bad condition	2.7 (2.0)	1.50 (0.70, 3.22)	1.31 (0.57, 3.01)

680 <sup>a</sup> All models are adjusted for landscape features, relative humidity, altitude, and ambient temperature.

681 Adjusted models also include all five exposure variables at the same time. Standard Deviation (SD); Odds

682 Ratio (OR); Risk Ratio (RR); Confidence Interval (CI); Reference (Ref.). Surface water not included

683 because all samples were positive. Statistical significance ( $P < 0.05$ ) indicated using bold typeface.

684 <sup>b</sup> The unadjusted OR and RR for this model reflect significant confounding by an ecological variable.

685 Bivariate association for open defecation indicators and presence of enterococcus is unadj. OR=0.50

686 (95% C.I. 0.19, 1.34), and the bivariate model for open defecation indicators and log<sub>10</sub> concentration of

687 enterococcus is unadj. RR=0.92 (95% C.I. 0.48, 1.76).

688

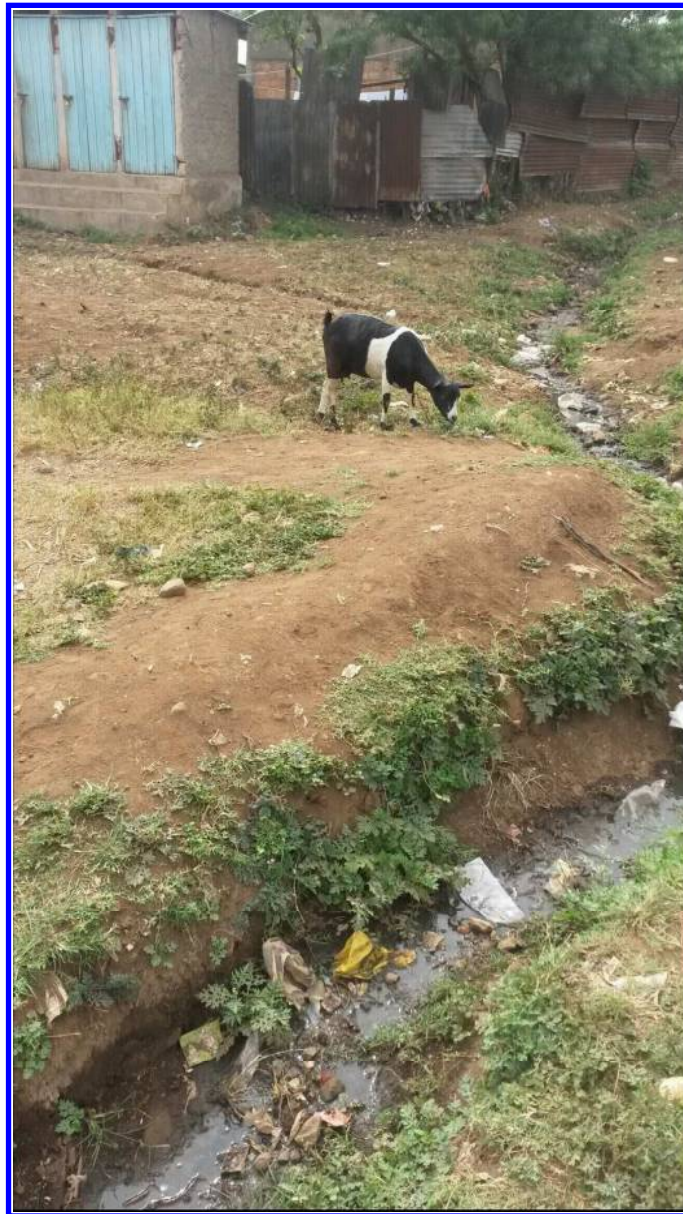
689 Table 3. Association between human sanitation and animal feces sources with the presence and  
 690 diversity in enteric pathogens from Kisumu neighborhood public domains.

Presence of Any Pathogen			
Exposure	% ( <i>n</i> positive/ <i>N</i> )	Unadj. OR (95% C.I.)	Adj. OR (95% C.I.)
Observed feces on ground	83.9% (130/155)	1.41 (0.41, 4.87)	1.01 (0.25, 4.04)
None	83.1% (59/71)	Ref.	1.02 Ref.
Observed open defecation indicators	82.3% (51/62)	1.46 (0.41, 5.19)	0.98 (0.22, 4.52)
None	84.2% (138/164)	Ref.	Ref.
Domestic Animals	85.3% (151/177)	1.60 (0.43, 5.91)	1.53 (0.28, 8.54)
None	77.6% (38/49)	Ref.	Ref.
Flies	84.7% (182/215)	17.1 (0.70, 418.0)	5.15 (0.20, 130.1)
None	42.9% (3/7)	Ref.	Ref.
Latrine condition - No latrines	84.4% (38/45)	Ref.	Ref.
Latrine condition - Good condition	66.7% (8/12)	0.16 (0.01, 2.72)	0.70 (0.10, 4.99)
Latrine condition - Bad condition	84.6% (143/169)	0.78 (0.17, 3.54)	0.98 (0.21, 4.52)
Pathogen Diversity			
Exposure	Mean (SD)	Unadj. RR (95% C.I.)	Adj. RR (95% C.I.)
Observed feces on ground	1.9 (1.9)	1.04 (0.80, 1.34)	1.0 (0.75, 1.33)
None	1.8 (2.0)	Ref.	2.0 Ref.
Observed open defecation indicators	1.4 (1.5)	0.95 (0.70, 1.29)	0.88 (0.63, 1.22)
None	2.0 (2.1)	Ref.	Ref.
Domestic Animals	2.0 (2.1)	<b>1.39 (1.03, 1.89)</b>	<b>1.44 (1.01, 2.06)</b>
None	1.3 (1.2)	Ref.	Ref.

Flies	1.9 (2.0)	2.35 (1.00, 5.56)	2.00 (0.84, 4.79)
None	0.6 (0.8)	Ref.	Ref.
Latrine condition - No latrines	1.5 (1.7)	Ref.	Ref.
Latrine condition - Good condition	0.8 (0.8)	0.77 (0.39, 1.51)	0.78 (0.40, 1.53)
Latrine condition - Bad condition	2.0 (2.0)	1.12 (0.79, 1.58)	1.08 (0.74, 1.57)

691 <sup>a</sup> Adjusted for landscape features, relative humidity, altitude, and ambient temperature. Unadjusted  
692 (unadj.); Adjusted (Adj.); Standard Deviation (SD); Odds Ratio (OR); Risk Ratio (RR); Confidence Interval  
693 (CI); Reference (Ref.). Statistical significance (P<0.05) indicated using bold typeface.

694 J.



Example of a public site in Kisumu impacted by multiple potential sources of enteric pathogens: a communal latrine, a domestic goat, and an informal drain used for water management and and waste disposal.

285x508mm (96 x 96 DPI)