



ARTICLE

Clinical Study

Persistent inequalities in unplanned hospitalisation among colon cancer patients across critical phases of their care pathway, England, 2011–13

Camille Maringe¹, Bernard Rachet¹, Georgios Lyraopoulos² and Francisco Javier Rubio¹

BACKGROUND: Reducing hospital emergency admissions is a key target for all modern health systems.

METHODS: We analysed colon cancer patients diagnosed in 2011–13 in England. We screened their individual Hospital Episode Statistics records in the 90 days pre-diagnosis, the 90 days post-diagnosis, and the 90 days pre-death (in the year following diagnosis), for the occurrence of hospital emergency admissions (HEAs).

RESULTS: Between a quarter and two thirds of patients experience HEA in the three 90-day periods examined: pre-diagnosis, post-diagnosis and before death. Patients with tumour stage I–III from more deprived backgrounds had higher proportions of HEAs than less deprived patients during all studied periods. This remains even after adjusting for differing distributions of risk factors such as age, sex, comorbidity and stage at diagnosis.

CONCLUSIONS: Although in some cases HEAs might be unavoidable or even appropriate, the proportion of HEAs varies by socioeconomic status, even after controlling for the usual patient factors, suggestive of remediable causes of excess emergency healthcare utilisation in patients belonging to higher deprivation groups. Future inquiries should address the potential role of clinical complications, sub-optimal healthcare administration, premature discharge or a lack of social support as potential explanations for these patterns of inequality.

British Journal of Cancer <https://doi.org/10.1038/s41416-018-0170-2>

INTRODUCTION

Hospital Emergency Admissions (or readmissions, HEAs) are generally defined as unplanned admissions to hospital. In the USA, rates of hospital emergency readmissions within 30 days are used as indicators of quality of care, and hospitals can be penalised if they present high rates of hospital readmissions.¹ In England, the National Health Service monitors 90-days unplanned readmissions as an indicator of quality of care.² HEAs have financial implications, as unplanned hospital admissions are more expensive than planned ones,³ and they utilise resources from the already pressured Accident and Emergency (A&E) department.⁴

In the context of cancer epidemiology in England, the literature has mainly focused on understanding the causes for HEAs within 90 days following colorectal cancer resection,² describing the impact of deprivation on HEAs post-diagnosis in the Thames region,⁵ or analysing differential access to hospital care.^{6,7} Recently, great attention has also been paid to the analysis and impact of emergency presentations of cancer.^{8,9} However, there is insufficient evidence concerning the joint analysis of hospital admissions (HAs), elective or unplanned, of cancer patients in England for different periods in their trajectories. Despite wide-ranging causes for HEAs in different periods around the cancer diagnosis, examining different aspects of the cancer pathway

jointly can reveal consistent patterns of variation for different patient groups. Large variations in cancer outcomes by deprivation remain unexplained by differential distribution of stage at diagnosis and access to treatment.^{6,7,10} Deprivation-related disparities in outcomes may be attributed to more complex variations in management and care, difficult to measure at population level. HEAs may be related to premature hospital discharge, overlooking the severity of certain symptoms, a lack of follow-up after the diagnosis and social support, or a delay in elective admission.

We present the analysis of HEAs in three key periods: 90 days pre-diagnosis, 90 days post-diagnosis and 90 days pre-death (Fig. 1). Depending on tumour factors, such as stage at diagnosis, these periods may be signs of (1) poor recognition of signs and symptoms by both patients and doctors; (2) poor quality discharge planning, poor social support, or a rapid evolution of the disease; and (3) the quality of life of terminal patients.

We report national proportions of HEAs for colon cancer patients in England. We also study the variation of HEAs by deprivation level. For both aims, we focus on the time period between three months before and a year after the date of diagnosis. To our knowledge, this is the first time the topic of emergency admission in colon cancer patients by

¹Cancer Survival Group, Department of Epidemiology and Population Health, London School of Hygiene and Tropical Medicine, London WC1E 7HT, UK and ²Epidemiology of Cancer Healthcare and Outcomes (ECHO) Research Group, Department of Behavioural Science and Health, University College London, London WC1E 7HB, UK
Correspondence: Francisco Javier Rubio (Francisco.Rubio@lshtm.ac.uk)

Received: 26 February 2018 Revised: 5 June 2018 Accepted: 13 June 2018
Published online: 15 August 2018

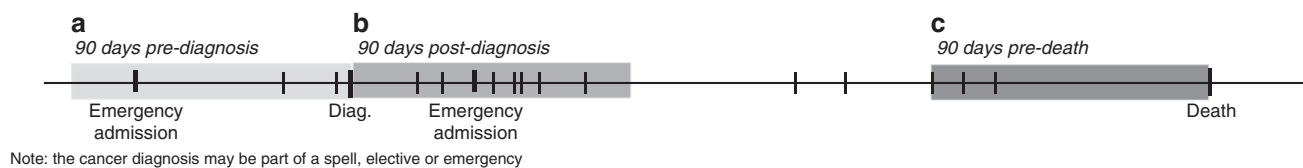


Fig. 1 Diagram showing the different analysis periods. **a** 90 days pre-diagnosis, **b** 90 days post-diagnosis, and **c** 90 days pre-death (when death occurred in the 90 days to 1 year following diagnosis)

deprivation is studied nation-wide and along the cancer care pathway.

METHODS

We analyse 65,020 records for patients diagnosed between 2011 and 2013 in England with a colon carcinoma (ICD-10 C18). These were linked to the Hospital Episode Statistics (HES) in-patients and A&E datasets that contain records of all hospital attendances between 2003 and 2014.

Information on patients' age, deprivation, comorbidity and stage at diagnosis was available or derived^{11,12} from the cancer registrations linked to the National Bowel Cancer Audit Data (NBOCAT) and HES. Deprivation is measured at the Lower Super Output Area (LSOA) level (mean population 1500), using the Index for Multiple Deprivation (IMD) income domain.¹³ The IMD scores are ranked and split according to quintiles of their national distribution, thereby dividing the LSOAs in five groups of increasing deprivation. Patients are allocated to a deprivation group given their LSOA of residence at the time of diagnosis. Stage at diagnosis was classified using the Tumour, Node and Metastasis (TNM) staging system.¹⁴ Comorbidity information was derived from the HES data.¹¹ A binary variable identifies comorbid patients. We checked the HES records in the 8 years preceding the colon cancer diagnosis for the occurrence of any of the 17 comorbidities that forms part of the Charlson score,¹⁵ or morbid obesity, given evidence that it may moderate decisions about surgical management and prognosis. For each patient, a diagnostic route, representing different types of care pathways to a diagnosis of cancer, was assigned by Public Health England using an algorithm based on linked data from cancer registration, Hospital Episodes Statistics, National Cancer Waiting Times and National Bowel Cancer Screening Programme.¹⁶

From the HES dataset, we defined unplanned admissions as: (i) any A&E admissions, and (ii) in-patient admissions where the method of admission (*admimeth* variable) was coded as "Emergency Admission, when admission is unpredictable and at short notice because of clinical need".¹⁷ We looked at the admission status of the first or unique episode of a spell.¹⁸

We presented the analysis of HEAs in three key periods along the course of the disease: (1) 90 days pre-diagnosis, (2) 90 days post-diagnosis; and (3) 90 days pre-death (Fig. 1). Thus, the date of diagnosis as defined by the United Kingdom and Ireland Association of Cancer Registries (UKIACR) represents the reference point, around which we define pre- and post-diagnosis periods. In the 90 days pre-diagnosis, the 65,020 colon cancer patients could experience two possible outcomes: those diagnosed with cancer after one or more HEAs, and those diagnosed with cancer without any HEAs. In the 90 days post-diagnosis, these patients could be in one of four possible outcomes defined by the combination of their emergency admission status and vital status at 90 days. Analysing separately the patients who die before the end of the observation period is essential to avoid the phenomenon of "immortal bias".¹⁹ We then selected patients who died between the 90th day and 12th month after diagnosis ($n = 8681$), and examined whether they had records of HEAs in the 90 days preceding death. Therefore, patients who had died within the first three months of

diagnosis, or patients who were alive after a year did not form part of this sub-analysis.

Because of our prior interest in deprivation-related inequalities in HEAs, we presented proportions of HEAs by deprivation quintile. Since stage distribution varies by deprivation, and both stage and deprivation are associated with the occurrence of HEAs, we presented stratified analyses of HEAs by deprivation and stage at diagnosis (and route to diagnosis). The text often highlights differences between the two extreme deprivation groups (i.e. deprivation 1 and 5). The gradients, for the outcomes of interest, between all deprivation groups are given in tables and graphs.

In order to account further for differential distributions of risk factors between deprivation groups, we calculated indirectly standardised rates of emergency admissions for the most deprived patients in the 90 days following their colon cancer diagnosis. We applied the sex, age and comorbidity distribution of patients in the least deprived group, stratified by stage at diagnosis, to patients of the most deprived group. We can interpret the values as hypothetical proportions of HEA that would be observed in the most deprived category, had patients been subjected to the sex, age, and comorbidity allocation of least deprived patients. Given sex and age vary little by deprivation generally, it is a crude estimation of the role of comorbidity in the differential proportions of HEA between deprivation levels. We similarly calculated sex, age, comorbidity and stage-standardised rates restricted to patients with complete information on their stage at diagnosis.

RESULTS

Inequalities in HEA by patient factors

Pre-diagnosis. In the 90 days preceding their colon cancer diagnosis, over a third (38%) of patients experienced at least one HEA (Table 1). Over half of the first of these pre-diagnosis HEAs occurred in the 30 days prior to diagnosis (Fig. 2a).

These HEA events were somewhat more frequent among women (40% vs 36% in men, $p < 0.001$), and substantially more frequent among patients subsequently diagnosed at more advanced stage (47% vs 18% for patients diagnosed at stages IV and I, respectively, $p = 0.023$), those with increasing deprivation (46% vs 33% in least and most deprived patients, respectively, $p = 0.001$) and those with at least one comorbidity (48% vs 31% among those without, $p < 0.001$, Table 1).

Post-diagnosis. Up to 15% of patients died in the 90 days following their colon cancer diagnosis, including 5% after at least one HEA. There are marked differences by stage at diagnosis, with increasing proportions of patients who died with or without HEA with increasing stage (Table 1). Patients who died within the first 90 days after their diagnosis were 78.6 years compared to 71 years for those who survived that period. There is some variation in the proportions of patients dying, with ($p = 0.001$) or without ($p < 0.001$) HEA, by deprivation.

Among the majority of patients who survived to 3 months, HEAs were observed in 22%. This proportion varied little by sex, and comorbidity, but was substantially greater in more deprived patients ($p = 0.018$) and those diagnosed in advanced stage

Table 1. Distribution of the outcomes by patient characteristics, within each period, of the 65,020 patients diagnosed with colon cancer in England in 2011–13

| | 90-day pre-diagnosis | | | | 90-day post-diagnosis | | | | | | 90-day pre-death (N = 8681) | | | | | |
|-----------------------------|----------------------|--------------------|-----------------|---------------------|-----------------------|--------------------|-----------------|--------------------|-------|---------------------|-----------------------------|---------------------|-------|--------------------|-----------------|---------------------|
| | Alive | | Alive after HEA | | Alive | | Alive after HEA | | Death | | Death after HEA | | Death | | Death after HEA | |
| | N | % | N | % | N | % | N | % | N | % | N | % | N | % | N | % |
| Total | 40,498 | 62.3 | 24,522 | 37.7 | 40,688 | 62.6 | 14,441 | 22.2 | 6,689 | 10.3 | 3,202 | 4.9 | 2,872 | 33.1 | 5,809 | 66.9 |
| Age at diagnosis (mean age) | 71.7 | | 72.7 | | 71.2 | | 70.1 | | 80.0 | | 75.5 | | 78.6 | | 74.5 | |
| Sex | | | | | | | | | | | | | | | | |
| F | 18,598 | 60.2 | 12,301 | 39.8 | 19,078 | 61.7 | 6,803 | 22.0 | 3,526 | 11.4 | 1,492 | 4.8 | 1,522 | 35.5 | 2,768 | 64.5 |
| M | 21,900 | 64.2 | 12,221 | 35.8 | 21,610 | 63.3 | 7,638 | 22.4 | 3,163 | 9.3 | 1,710 | 5.0 | 1,350 | 30.7 | 3,041 | 69.3 |
| p-value | | | | <0.001 ^a | | | | | | | | <0.001 ^b | | | | <0.001 ^a |
| Deprivation | | | | | | | | | | | | | | | | |
| 1 | 9,602 | 67.3 | 4,670 | 32.7 | 9,412 | 65.9 | 3,018 | 21.1 | 1,222 | 8.6 | 620 | 4.3 | 635 | 35.5 | 1,153 | 64.5 |
| 2 | 9,342 | 65.0 | 5,039 | 35.0 | 9,282 | 64.5 | 3,065 | 21.3 | 1,360 | 9.5 | 674 | 4.7 | 649 | 34.7 | 1,223 | 65.3 |
| 3 | 8,604 | 62.8 | 5,087 | 37.2 | 8,669 | 63.3 | 2,923 | 21.3 | 1,439 | 10.5 | 660 | 4.8 | 605 | 33.3 | 1,214 | 66.7 |
| 4 | 7,553 | 59.2 | 5,209 | 40.8 | 7,661 | 60.0 | 2,955 | 23.2 | 1,457 | 11.4 | 689 | 5.4 | 581 | 32.4 | 1,210 | 67.6 |
| 5 | 5,397 | 54.4 | 4,517 | 45.6 | 5,664 | 57.1 | 2,480 | 25.0 | 1,211 | 12.2 | 559 | 5.6 | 402 | 28.5 | 1,009 | 71.5 |
| p-value | | 0.001 ^c | | 0.001 ^c | | 0.002 ^c | | 0.018 ^c | | <0.001 ^c | | 0.001 ^c | | 0.008 ^c | | 0.008 ^c |
| Stage at diagnosis | | | | | | | | | | | | | | | | |
| 1 | 5,550 | 81.9 | 1,230 | 18.1 | 5,467 | 80.6 | 1,176 | 17.3 | 88 | 1.3 | 49 | 0.7 | 76 | 37.3 | 128 | 62.7 |
| 2 | 9,708 | 65.3 | 5,160 | 34.7 | 10,846 | 72.9 | 3,257 | 21.9 | 578 | 3.9 | 187 | 1.3 | 222 | 30.8 | 499 | 69.2 |
| 3 | 8,479 | 63.8 | 4,808 | 36.2 | 9,176 | 69.1 | 3,301 | 24.8 | 557 | 4.2 | 253 | 1.9 | 364 | 28.2 | 927 | 71.8 |
| 4 | 8,111 | 52.8 | 7,247 | 47.2 | 6,681 | 43.5 | 3,885 | 25.3 | 2,876 | 18.7 | 1,916 | 12.5 | 1,407 | 32.5 | 2,925 | 67.5 |
| p-value | | 0.023 ^c | | 0.023 ^c | | 0.038 ^c | | 0.027 ^c | | 0.071 ^c | | 0.087 ^c | | 0.214 ^c | | 0.214 ^c |
| Missing stage | 8,650 | 58.7 | 6,077 | 41.3 | 8,518 | 57.8 | 2,822 | 19.2 | 2,590 | 17.6 | 797 | 5.4 | 803 | 37.6 | 1,330 | 62.4 |
| Comorbidity | | | | | | | | | | | | | | | | |
| 0 | 26,474 | 69.3 | 11,752 | 30.7 | 25,587 | 66.9 | 8,362 | 21.9 | 2,666 | 7.0 | 1,611 | 4.2 | 1,443 | 32.8 | 2,960 | 67.2 |
| 1 | 14,024 | 52.3 | 12,770 | 47.7 | 15,101 | 56.4 | 6,079 | 22.7 | 4,023 | 15.0 | 1,591 | 5.9 | 1,429 | 33.4 | 2,849 | 66.6 |
| p-value | | | | <0.001 ^a | | | | | | | | <0.001 ^b | | | | 0.538 ^a |

^aFisher's test for count data. Tests for the equality of two binomial populations. The test was performed with the R command `fisher.test()` ^bChi-square test. Tests for the equality of two multinomial populations. The test was performed with the R command `chisq.test()` ^cCorrelation test for trend: Test for a positive or negative correlation of the means. The *p*-values correspond to one-sided tests. The *p*-value is obtained with the R command `cor.test()`

(*p* = 0.027, Table 1). Overall, there were higher proportions of patients without comorbidities (67%), stage I disease (81%), and least deprived (66%) who did not experience any HEA during the 3 months post-diagnosis than those patients with comorbidities (56%), stage IV disease (44%) or most deprived (57%) (Table 1).

There was a sharp increase in proportions of patients dying (with or without HEA) in the first days after diagnosis, and that increase flattened out after 20–30 days after diagnosis. On the contrary, the proportions of HEAs kept increasing through to 90 days after diagnosis (Fig. 2b).

Pre-death. Among the 8,681 patients who died between 90 days and a year of their colon cancer diagnosis, on average 67% experienced at least one HEA in the 90 days prior to their death (Table 1 and Fig. 2c). Such HEA events were more common among male (69% vs 65% in female, *p* < 0.001) and more deprived (72% to 65% from most to least deprived, *p* = 0.008) fatal cases. There was a constant increase in the proportion of patients with HEA with increasing time to death (Fig. 2c).

Missing information on stage was affecting between 20% (alive patients with a HEA after diagnosis) and 39% (patients who died without HEA in the 90 days after diagnosis) of patients.

Diagnostic route

Diagnostic route was linked to patterns of HEAs pre-diagnosis and the proportions of HEAs post-diagnosis and pre-death, when death happened in the 90 days to first year after the diagnosis (Annex 1). Patients diagnosed through screening had lowest proportions of HEAs at all times (<5%), in contrast to patients diagnosed via Emergency, which showed higher proportions of HEAs or death. In the 90 days pre-diagnosis, patients diagnosed through the two-week-wait had low proportions of HEAs (5–10%). In the 90 days post diagnosis, patients diagnosed following GP referral, in-patient elective, other outpatient and two-week-wait had lower proportions of death (with or without HEAs, 10% or less), but similar proportions of patients with one or more HEAs to patients diagnosed through emergency or unknown routes (~20%), see Annex 1.

Stage-specific deprivation-related inequalities in HEA

Around the time of diagnosis, there were linearly increasing proportions of patients with adverse outcomes (HEAs pre- and post-diagnosis and death within 90 days of diagnosis, Annex 2A&B) with increasing deprivation (Fig. 3a, b), at all stages at diagnosis. The discrepancy in adverse outcomes between deprivation groups

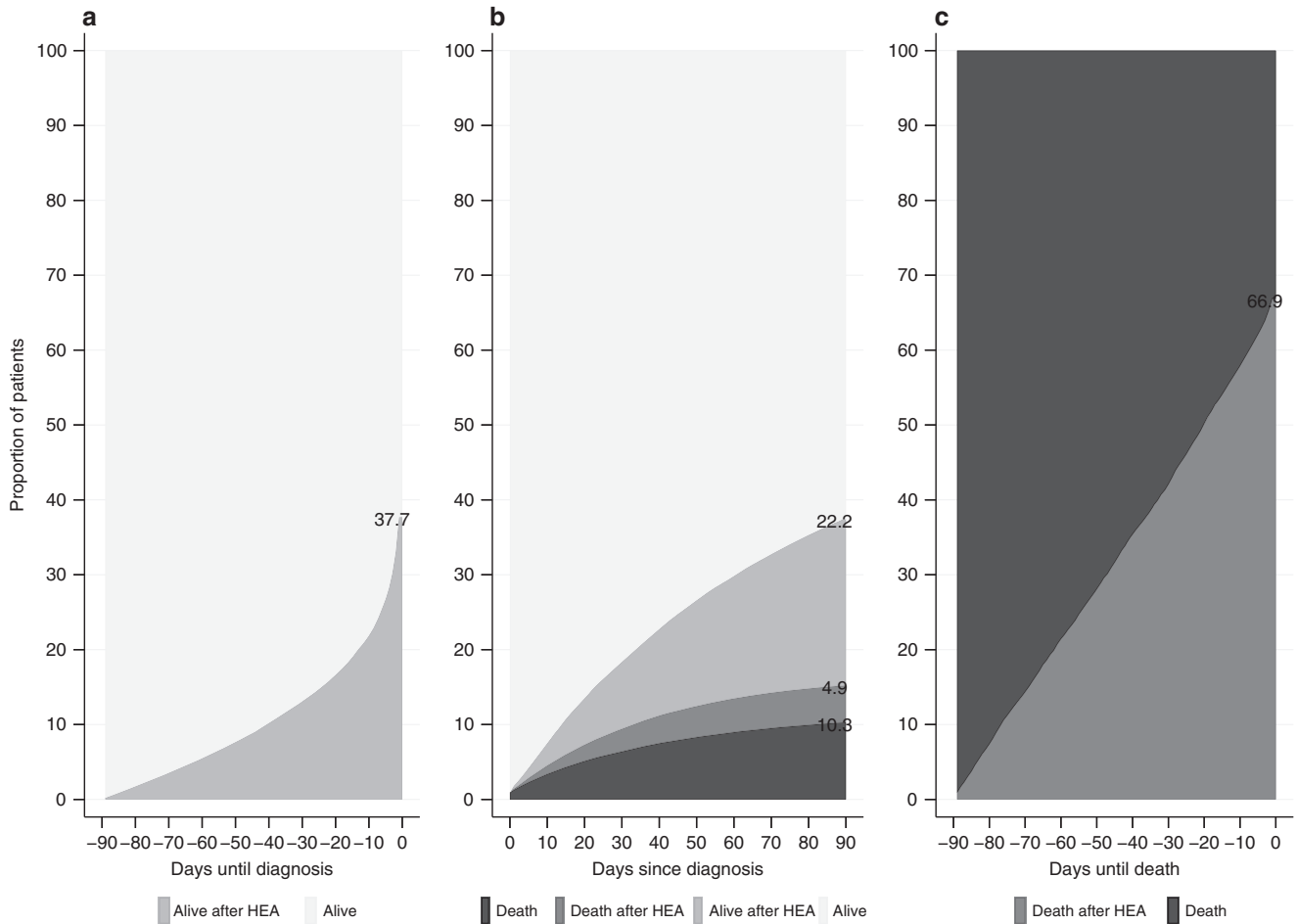


Fig. 2 Time-varying proportions of HEA in the 90 days pre-diagnosis (a), 90 days post-diagnosis (b), and 90 days pre-death (c)

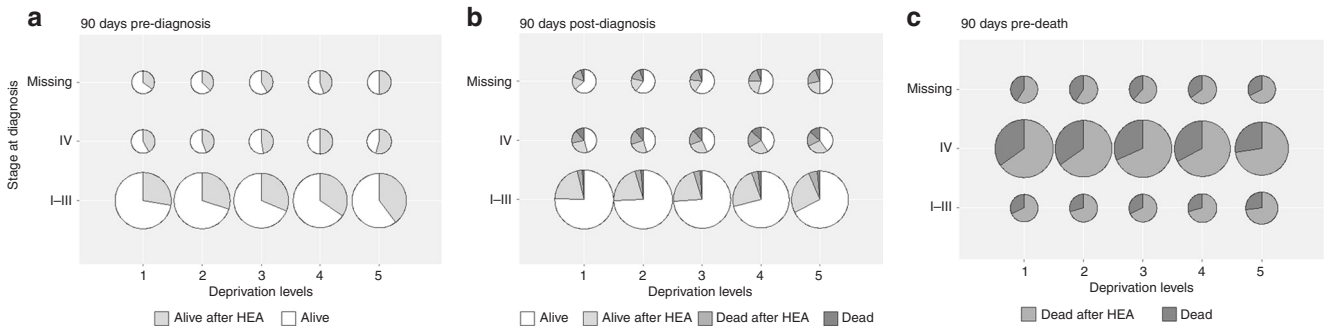


Fig. 3 Distribution of each outcome, by period, deprivation quintile and stage at diagnosis: **a** 90 days pre-diagnosis, **b** 90 days post-diagnosis, **c** 90 days pre-death

for patients dying in their first year was less striking at stages I–III, but still evident for patients diagnosed at stage IV or missing stage (Fig. 3c).

Before the diagnosis, the proportions of patients with at least one HEA differed between least and most deprived (Table 2): respectively 28% and 40% of stage I–III patients, 42% and 55% of stage IV patients, and 36% and 50% of missing stage patients had HEAs before their cancer diagnosis. Those differences by deprivation remained in the 90 days after diagnosis for patients diagnosed at stages I–III or with no valid stage recorded. Patients diagnosed at stage IV did not show striking variations by deprivation in the proportions of each of the four outcomes in the 90 days following diagnosis and patterns through time were similar

across deprivation groups. In the 90 days pre-death, most deprived patients had between 5% and 7% higher proportions of death within 90 days of one or more HEAs than least deprived patients.

Considering observed non-standardised proportions, it is apparent that overall most deprived patients had higher proportions of all types of HEA's events studied (across all three 90-day periods of interest), particularly for patients in stages I–III (Table 2). In these groups, proportions of adverse outcomes remained higher in most deprived compared to least deprived patients, even after removing the impact that differential distributions of sex, age, and comorbidity (and stage) might have on those proportions.

Table 2. Proportions of each outcome (with 95% CI), 90 days after diagnosis, for least and most deprived patients. Indirectly standardised proportions^a for most deprived patients

| Outcome | Stage | Deprivation | | Standardised proportions (most deprived) | | |
|----------------------------------|----------------------------------|-------------|-------------|--|-----------------------|---|
| | | Least | Most | Age, sex | Age, sex, comorbidity | Age, sex, comorb., stage (Complete case) ^b |
| <i>a. 90 days pre diagnosis</i> | | | | | | |
| Proportion with HEA | | | | | | |
| | I-III | 27.7% | 39.7% | 39.2% | 37.0% | |
| | 95% CI | 26.7%;28.7% | 38.3%;41.0% | 37.9%;40.5% | 35.7%;38.3% | |
| | IV | 41.8% | 54.5% | 54.2% | 51.7% | |
| | 95% CI | 40.1%;43.5% | 52.5%;56.5% | 52.2%;56.2% | 49.7%;53.7% | |
| | Missing | 35.6% | 49.9% | 48.7% | 46.4% | |
| | 95% CI | 34.0%;37.3% | 47.8%;51.9% | 46.6%;50.7% | 44.4%;48.5% | |
| | All (complete case) ^b | 31.9% | 44.3% | | | 41.3% |
| | 95% CI | 31.0%;32.8% | 43.2%;45.4% | | | 40.2%;42.4% |
| <i>b. 90 days post diagnosis</i> | | | | | | |
| Dead | | | | | | |
| | I-III | 2.7% | 4.7% | 5.0% | 4.4% | |
| | 95% CI | 2.4%;3.1% | 4.1%;5.3% | 4.4%;5.6% | 3.9%;5.0% | |
| | IV | 16.7% | 19.0% | 20.0% | 19.4% | |
| | 95% CI | 15.4%;18.0% | 17.4%;20.6% | 18.3%;21.6% | 17.8%;21.0% | |
| | Missing | 14.5% | 22.4% | 22.1% | 21.5% | |
| | 95% CI | 13.2%;15.7% | 20.7%;24.1% | 20.4%;23.8% | 19.8%;23.2% | |
| | All (complete case) ^b | 6.9% | 9.2% | | | 8.9% |
| | 95% CI | 6.4%;7.4% | 8.5%;9.8% | | | 8.2%;0.0% |
| Proportion with HEA | | | | | | |
| Dead | | | | | | |
| | I-III | 1.1% | 1.8% | 1.9% | 1.8% | |
| | 95% CI | 0.9%;1.3% | 1.4%;2.1% | 1.5%;2.2% | 1.4%;2.1% | |
| | IV | 11.9% | 13.9% | 14.1% | 13.8% | |
| | 95% CI | 10.8%;13.0% | 12.5%;15.2% | 12.7%;15.6% | 12.4%;15.2% | |
| | Missing | 4.5% | 6.0% | 6.0% | 5.8% | |
| | 95% CI | 3.7%;5.2% | 5.0%;7.0% | 5.0%;6.9% | 4.8%;6.7% | |
| | All (complete case) ^b | 4.3% | 5.5% | | | 5.3% |
| | 95% CI | 3.9%;4.7% | 5.0%;6.0% | | | 4.8%;5.8% |
| Alive | | | | | | |
| | I-III | 20.7% | 26.0% | 25.6% | 24.9% | |
| | 95% CI | 19.8%;21.6% | 24.8%;27.2% | 24.4%;26.8% | 23.7%;26.1% | |
| | IV | 25.7% | 26.5% | 25.4% | 25.4% | |
| | 95% CI | 24.2%;27.2% | 24.8%;28.3% | 23.6%;27.1% | 23.6%;27.1% | |
| | Missing | 17.6% | 21.1% | 21.3% | 20.8% | |
| | 95% CI | 16.3%;18.9% | 19.4%;22.8% | 19.6%;22.9% | 19.1%;22.5% | |
| | All (complete case) ^b | 22.1% | 26.2% | | | 25.1% |
| | 95% CI | 21.4%;22.9% | 25.2%;27.2% | | | 24.1%;26.0% |
| <i>c. 90 days pre death</i> | | | | | | |
| Proportion with HEA | | | | | | |
| | I-III | 68.2% | 73.1% | 72.3% | 71.5% | |
| | 95% CI | 63.8%;72.6% | 68.8%;77.4% | 67.9%;76.6% | 67.1%;75.9% | |
| | IV | 65.1% | 73.0% | 71.4% | 70.7% | |
| | 95% CI | 62.0%;68.2% | 69.6%;76.3% | 67.9%;74.8% | 67.2%;74.1% | |
| | Missing | 59.0% | 66.9% | 66.9% | 65.0% | |
| | 95% CI | 54.3%;63.6% | 61.9%;71.8% | 61.9%;71.8% | 59.9%;70.0% | |
| | All (complete case) ^b | 66.1% | 73.0% | | | 70.9% |
| | 95% CI | 63.6%;68.6% | 70.3%;75.7% | | | 68.2%;73.7% |

^aIndirect standardisation of proportions for most deprived patients use the age and sex, age, sex and comorbidity by stage, and age, sex, comorbidity and stage distributions observed in least deprived patients. ^bComplete cases are patients with a valid record of stage

Patients diagnosed at stage IV had slightly overlapping 95% confidence intervals around their proportions of outcomes in the 90 days following diagnosis, suggesting a milder deprivation gap in this sub-group.

Indirect standardisation, i.e. applying the distributions of age, sex, comorbidity and stage observed in the least deprived patients to the most deprived patients, hardly changed the proportions of any of the outcomes studied in all three time-periods among the most deprived patients. That is, the most deprived group of patients experience higher proportions of emergency healthcare than the least deprived group.

In all three phases of the care pathway studied, both the least and the most deprived groups showed similar increasing trends with time in their proportions of each outcome (Annex 2). Trends in elective admissions were identical in least and most deprived patients (Annex 3).

DISCUSSION

In the 90 days before the diagnosis, over a third of patients experience at least one HEA, in line with the reported proportions of patients diagnosed via emergency presentation within 28 days of diagnosis.¹⁶ In total 85% of the patients survived the 90 days post-diagnosis and a quarter of them experienced at least one HEA in this period. By contrast, among the remaining 15% who died, a third (i.e. 5% of all patients) experienced at least one HEA in this post-diagnosis period. The proportion of patients who experienced at least one HEA rose to two thirds in the 90 days pre-death, among those who died in the first year after diagnosis. Our study highlights a clear deprivation-related variability for patients diagnosed at stages I–III: patients from more deprived background exhibit higher rates of HEAs than least deprived patients (with a decreasing gradient for intermediate deprivation levels) pre- and post-diagnosis. This phenomenon is not explained by differences in the distribution of age, sex, presence of comorbidity, and stage of disease. This is in line with the results found in the US²⁰ and in the England Thames region.⁵ In contrast, we did not find large differences in the proportions of elective admissions across deprivation groups in the 90 days following diagnosis. Stage IV patients exhibit less marked deprivation-related variability in terms of HEAs, which may be related to the terminal status of those patients.

These analyses are based on all colon cancer patients diagnosed in England in the years 2011–13. The patients' records were linked to the A&E and in-patient hospital data. Any differences between groups of patients highlighted here are not likely due to chance given the population-based nature of the data. We defined the emergency status of a spell in HES¹⁸ based on the first or unique HES episode of that spell, i.e. the emergency status of further episodes of a spell are not considered.

Another contribution of this work is that it provides appropriate descriptive tools for HEA data. More specifically, given that in the 90 days after the diagnosis some patients die, it implies that, for those patients, the events of interest (HEAs) cannot occur in a certain period during the follow-up time, i.e. in the time following death. This phenomenon is known as immortal bias¹⁹ and needs to be taken into account in order to avoid drawing biased conclusions.

A limitation of our analysis is that it excludes elective and emergency admissions to private hospitals. This may induce a slight under estimation of the number of admissions in the least deprived group, which is the most likely group to attend private hospitals. Nevertheless, we do not expect the inclusion of such admissions to private hospitals to affect the conclusions presented in this paper.²¹

This study highlights consistent patterns of increased proportions of HEA with increasing deprivation among the colon cancer patients at stages I–III. Similar patterns have been reported in the general

population.²² These are stable throughout the diagnosis and treatment pathways. Furthermore, we emphasise that there are differences between deprivation groups before the diagnosis, i.e. when patients are still considered part of the general population.

Interestingly, once patients are diagnosed, and should therefore undertake the same scrutinised treatment and follow-up for their disease, the difference between deprivation groups remains, even after the influence of case-mix factors is taken into account. This is suggestive of differential management as well as the potential contribution of different socio-cultural factors including use of hospital and palliative care, family and social support, and hospital as a place of death. Evidence of this may be found in late-stage patients dying in the year following their colon cancer diagnosis, whereby most healthcare need can be assumed to relate to palliative care and support. Least deprived patients show, perhaps unavoidable, high proportions of HEAs in the 90 days pre-death (65%), but up to 72% of most deprived patients visit A&E prior to death—the difference in these percentages can provide a measure of potentially avoidable HEAs in the most deprived group.

Comorbidity information was captured from linkage of the HES records to the cancer registration dataset for the years preceding diagnosis.¹¹ Comorbidities derived using HES diagnostic codes provide a valid assessment of the health status of patients.^{23,24} An 8-year period before the colon cancer diagnosis was used to classify comorbid patients. This represents the largest assessment period available for patients diagnosed in 2011, and therefore minimises misclassification of patients into the “not-comorbid” category when in fact they are comorbid.

These results point out that there is an excess of potentially avoidable HEAs in the more deprived groups compared to the least deprived group. In order to reduce HEAs, interventions should focus on deprived groups and aim at integrating social and health care. For instance, patients that exhibit recurrent HEAs in a short period of time reflect either clinical complications, sub-optimal healthcare administration, premature discharge or a lack of social support. Disentangling the causes for recurrent HEAs requires a case by case analysis, and an efficient communication with the health professionals.

The aim of these analyses is to be paving the way for a more systematic study of hospital emergency admissions for cancer patients in different periods along their diagnosis pathways. Although we chiefly focus on deprivation-related inequalities in hospital admissions, studying other types of inequalities is also relevant. For instance, the factors (clinical or managerial) behind the observed differences in HEAs between male and female patients in the pre-diagnosis period deserve further investigation.²⁵ Nonetheless, a lot of information is available in the hospital data, such as admission codes, length of stay, details of the consultant caring for the patients, and cost of the hospital admissions. Identifying, extracting and synthesising further data items is key to understand better the differences in emergency access to healthcare around a colon cancer diagnosis, identify and characterise sub-optimal pathways.

In the different periods, the trajectories of cancer patients can be of very different nature due to wide-ranging causes. A lack of cancer symptoms awareness (patient-level) and sub-optimal management, including delay in the medical attention or premature discharge (system-level) can affect the occurrence and recurrence of HEAs.

In the 90 days before the diagnosis, there are opportunities for a timely diagnosis and earlier detection of people with signs and symptoms suggestive of cancer.²⁶ In the 90 days after the diagnosis, reducing HEAs may help provide optimal healthcare and treatment assignment. Receiving healthcare attention in HEAs is far from being the optimal healthcare pathway. Looking at patients who die within a year, 80% of them had an elective admission within 90 days of their death, happening, on average,

around two months before death. However, roughly twice the proportion of most deprived patients die after a HEA, with no elective admissions, compared to the least deprived group. Initiatives to allow patients to decide where to be cared for and where to die are already in place (e.g. The Marie Curie Cancer Care Delivering Choice Programme).²⁷ However, given the differences in HEAs by deprivation that we emphasise, it is important to make sure that these initiatives are being made available equally to all patients, regardless of their socioeconomic background, and that the patients' choice is well informed.

Given the financial and prognostic implications of HEAs, it is important to understand the patterns of hospital admissions of cancer patients. Identifying the characteristics of patients associated with higher proportions of HEAs helps targeting campaigns and policies on vulnerable sectors. Our study identifies cancer patient groups at higher risk of emergency admissions, which can be considered by UK healthcare providers to plan consultation rates, follow-up strategies, comorbidity management, and social support to help reduce the rate of HEAs.

ACKNOWLEDGEMENTS

We acknowledge useful discussion held in the Cancer Survival Group at the London School of Hygiene and Tropical Medicine on the subject of hospital emergency admissions. These have helped shape the research question and analysis plan for this manuscript. This work was partially supported (FJR) by a grant from the UK Department of Health [grant number no. 106/0001], as part of the programme of the Policy Research Unit in Cancer Awareness, Screening and Early Diagnosis. The Policy Research Unit in Cancer Awareness, Screening, and Early Diagnosis is a collaboration between researchers from seven institutions (Queen Mary University of London, University College London, King's College London, London School of Hygiene and Tropical Medicine, Hull York Medical School, Durham University and Peninsula Medical School/University of Exeter). This work was also supported by a Cancer Research UK programme grant (C7923/A18525) (CM and BR). GL is supported by a Cancer Research UK Advanced Clinician Scientist Fellowship Award (C18081/A18180) and is a Co-Investigator of the multi-institutional CanTest Research Collaborative funded by a Cancer Research UK Population Research Catalyst award (C8640/A23385).

AUTHOR CONTRIBUTIONS

F.J.R. had the original idea; C.M. and F.J.R. conducted all analyses and drafted the manuscript; B.R. and G.L. critically reviewed the analysis strategy and commented on the draft manuscripts.

ADDITIONAL INFORMATION

Supplementary information is available for this paper at <https://doi.org/10.1038/s41416-018-0170-2>.

Ethics approval and consent to participate: We obtained statutory approval (PIAG 1-05(c)/2007; ECC 1-05(a)/2010) and ethical approval (REC 13/LO/0610) for this research.

Competing interests: The authors declare no competing interests.

REFERENCES

1. Ang, C. W. et al. The most frequent cause of 90-day unplanned hospital readmission following colorectal cancer resection is chemotherapy complications. *Colorectal Dis.* **17**, 779–786 (2015).
2. Blunt, I., Bardsley, M., Grove, A. & Clarke, A. Classifying emergency 30-day readmissions in England using routine hospital data 2004–2010: what is the scope for reduction? *Emerg. Med. J.* **32**, 44–50 (2015).
3. Robertson, I. K. & Segal, L. Costs of emergency admission for colorectal cancer. *Lancet* **349**, 1105–1106 (1997).
4. Purdy, S. & Griffin, T. Reducing hospital admissions. *BMJ* **336**, 4–5 (2008).
5. Pollock, A. M. & Vickers, N. Deprivation and emergency admissions for cancers of colorectum, lung, and breast in south east England: ecological study. *BMJ* **317**, 245–252 (1998).
6. Bottle, A. et al. Association between patient and general practice characteristics and unplanned first-time admissions for cancer: observational study. *Br. J. Cancer* **107**, 1213–1219 (2012).

7. Raine, R. et al. Social variations in access to hospital care for patients with colorectal, breast, and lung cancer between 1999 and 2006: retrospective analysis of hospital episode statistics. *BMJ* **340**, b5479 (2010).
8. Maringe C., et al. Trends in lung cancer emergency presentation in England, 2006–2013: is there a pattern by general practice? *BMC Cancer.* **18**, 615 (2018).
9. Wallace, D. et al. Identifying patients at risk of emergency admission for colorectal cancer. *Br. J. Cancer* **111**, 577–580 (2014).
10. Fowler, H. et al. Persistent inequalities in 90-day colon cancer mortality: an English cohort study. *Br. J. Cancer* **117**, 1396–1404 (2017).
11. Maringe, C., Fowler, H., Rachet, B. & Luque-Fernandez, M. A. Reproducibility, reliability and validity of population-based administrative health data for the assessment of cancer non-related comorbidities. *PLoS ONE* **12**, e0172814 (2017).
12. Benitez-Majano S., Fowler H., Maringe C., Di Girolamo C., Rachet B. Deriving stage at diagnosis from multiple population-based sources: colorectal and lung cancer in England. *Br. J. Cancer.* 2016 06/21/online
13. Department for Communities and Local Government. The English Indices of Deprivation 2010 (London, 2011).
14. Sobin L. H., Gospodarowicz M., Wittekind C., editors. *TNM Classification of Malignant Tumours* 7th ed. (New York: John Wiley & Sons, 2009).
15. Charlson, M. E., Pompei, P., Ales, K. L. & MacKenzie, C. R. A new method of classifying prognostic comorbidity in longitudinal studies: development and validation. *J. Chronic Dis.* **40**, 373–383 (1987).
16. Elliss-Brookes, L. et al. Routes to diagnosis for cancer—determining the patient journey using multiple routine data sets. *Br. J. Cancer* **107**, 1220–1226 (2012).
17. Health and Social Care Information Centre. *HES Data Dictionary*. <http://content.digital.nhs.uk/hesdatadictionary>.
18. Health and Social Care Information Centre. *Methodology to Create Provider and CIP Spells from HES APC Data* (2014).
19. Jewell, N. P. Natural history of diseases: statistical designs and issues. *Clin. Pharmacol. Ther.* **100**, 353–361 (2016).
20. Manzano, J. G. et al. Unplanned 30-day readmissions in a general internal medicine hospitalist service at a comprehensive cancer center. *J. Oncol. Pract.* **11**, 410–415 (2015).
21. Davies, E. A., Coupland, V. H., Dixon, S., Mokbel, K. & Jack, R. H. Comparing the case mix and survival of women receiving breast cancer care from one private provider with other London women with breast cancer: pilot data exchange and analyses. *BMC Cancer* **16**, 421 (2016).
22. Purdy S. *Avoiding Hospital Admissions: what does the research evidence say?* London: The King's Fund. (2010). <http://www.kingsfund.org.uk/publications/avoiding-hospital-admissions> (last accessed 22/06/2018).
23. Crooks, C. J., West, J. & Card, T. R. A comparison of the recording of comorbidity in primary and secondary care by using the Charlson Index to predict short-term and long-term survival in a routine linked data cohort. *BMJ Open.* **5**, e007974 (2015).
24. Navid, A., Hajibandeh, S., Mohan, J. & Hajibandeh, S. Improving the accuracy of HES comorbidity codes by better documentation in surgical admission proforma. *Br. J. Hosp. Med.* **76**, 707–712 (2015).
25. Renzi C., Lyratzopoulos G., Hamilton W., Rachet B. Opportunities for reducing emergency diagnoses of colon cancer in women and men: a data-linkage study on pre-diagnostic symptomatic presentations and benign diagnoses. *Eur. J. Cancer Care.* (2018) (under review).
26. Renzi, C. et al. Do colorectal cancer patients diagnosed as an emergency differ from non-emergency patients in their consultation patterns and symptoms? A longitudinal data-linkage study in England. *Br. J. Cancer* **115**, 866–875 (2016).
27. Purdy, S., Lasseter, G., Griffin, T. & Wye, L. Impact of the Marie Curie Cancer Care Delivering Choice Programme in Somerset and North Somerset on place of death and hospital usage: a retrospective cohort study. *BMJ Support Palliat. Care.* **5**, 34–39 (2015).



Open Access This article is licensed under a Creative Commons Attribution 4.0 International License, which permits use, sharing, adaptation, distribution and reproduction in any medium or format, as long as you give appropriate credit to the original author(s) and the source, provide a link to the Creative Commons license, and indicate if changes were made. The images or other third party material in this article are included in the article's Creative Commons license, unless indicated otherwise in a credit line to the material. If material is not included in the article's Creative Commons license and your intended use is not permitted by statutory regulation or exceeds the permitted use, you will need to obtain permission directly from the copyright holder. To view a copy of this license, visit <http://creativecommons.org/licenses/by/4.0/>.