

LONDON
SCHOOL of
HYGIENE
& TROPICAL
MEDICINE



LSHTM Research Online

Countdown to 2030 Collaboration; , COLLABORATORS; Boerma, T; Requejo, J; Victora, CG; Amouzou, A; George, A; Agyepong, I; Barroso, C; Barros, AJD; +68 more... Bhutta, ZA; Black, RE; Borghi, J; Buse, K; Aguirre, LC; Chopra, M; Chou, D; Chu, Y; Claeson, M; Daelmans, B; Davis, A; DeJong, J; Diaz, T; El Arifeen, S; Ewerling, F; Fox, M; Gillespie, S; Grove, J; Guenther, T; Haakenstad, A; Hosseinpoor, AR; Hounton, S; Huicho, L; Jacobs, T; Jiwani, S; Keita, Y; Khosla, R; Kruk, ME; Kuo, T; Kyobutungi, C; Langer, A; Lawn, JE; Leslie, H; Liang, M; Maliqi, B; Manu, A; Masanja, H; Marchant, T; Menon, P; Moran, AC; Mujica, OJ; Nambiar, D; Ohiri, K; Park, LA; Patton, GC; Peterson, S; Piwoz, E; Rasanathan, K; Raj, A; Ronsmans, C; Saad-Haddad, G; Sabin, ML; Sanders, D; Sawyer, SM; da Silva, ICM; Singh, NS; Somers, K; Spiegel, P; Tappis, H; Temmerman, M; Vaz, LME; Ved, RR; Vidaletti, LP; Waiswa, P; Wehrmeister, FC; Weiss, W; You, D; Zaidi, S; (2018) Countdown to 2030: tracking progress towards universal coverage for reproductive, maternal, newborn, and child health. Lancet. ISSN 0140-6736 DOI: [https://doi.org/10.1016/S0140-6736\(18\)30104-1](https://doi.org/10.1016/S0140-6736(18)30104-1)

Downloaded from: <http://researchonline.lshtm.ac.uk/id/eprint/4646686/>

DOI: [https://doi.org/10.1016/S0140-6736\(18\)30104-1](https://doi.org/10.1016/S0140-6736(18)30104-1)

Usage Guidelines:

Please refer to usage guidelines at <https://researchonline.lshtm.ac.uk/policies.html> or alternatively contact researchonline@lshtm.ac.uk.

Available under license: <http://creativecommons.org/licenses/by-nc-nd/2.5/>

<https://researchonline.lshtm.ac.uk>

List of tables and figures, Countdown to 2030 Lancet article

Table 1: Countdown countries ranked by composite coverage index (CCI) and according to intervention coverage along the continuum of care, based on surveys 2012 or later

Data sources: Immunization rates, World Health Organization (WHO) and United Nations Children’s Fund (UNICEF); improved water and sanitation, WHO and UNICEF Joint Monitoring Programme for Water Supply and Sanitation; pregnant women living with HIV receiving antiretroviral therapy, Joint United Nations Programme on HIV/AIDS; all other indicators, UNICEF global database, July 2017 based on Demographic and Health Surveys, Multiple Indicator Cluster Surveys and other national surveys



Country	CCI	CCI Year	CCI Source	DFPS Modern	ANC4+	ART Preg Wom.	Tetanus Protection at	SBA	PNC Mom	PNC Baby	BF Early	BF Excl.	BF Cont. 1yr	DPT3	MCV1	Rotavirus	Vitamin A	Careseek. For Sympt. Of ARI	ORS	Basic Drinking Water service	Basic sanitation
Turkmenistan	81	2015	MICS	76	96			100	100	100	73	59	64	98	99	0		59	47	94	97
Dominican Republic	79	2014	MICS	84	93	83	90	98	94	95	38	5	31	87	85	75		73	48	94	83
Swaziland	79	2014	MICS	81	76	95	90	88	88	90	48	64	48	90	89	95	43	60	84	68	58
Malawi	77	2015	DHS	75	51	84	89	90	42	60	76	61	92	84	81	81	16	78	65	67	44
Namibia	77	2013	DHS	75	62	95	88	88	69	20	71	48	64	92	85	86	62	68	72	79	34
Algeria	77	2012	MICS	77	67	49	92	97			36	26	47	91	94	0		66	25	93	87
Kyrgyzstan	76	2014	MICS	62	95			99	98	98	82	41	61	96	97	0		60	33	87	97
Lesotho	75	2014	DHS	76	74	66	85	78	62	18	65	67	71	93	90	0	67	63	53	72	44
Indonesia	75	2012	DHS	79	84	10	85	87	80	48	49	42	77	79	76	0	82	75	39	90	68
Zimbabwe	73	2015	DHS	85	76	93	80	78	57	73	58	48	91	90	95	91	45	51	40	67	39
Guyana	72	2014	MICS	52	87	66	99	86	93	95	49	23	56	97	99	96		84	42	95	86
Kenya	70	2014	DHS	76	58	80	85	62	53	36	62	61	90	89	75	74	37	66	54	58	30
Zambia	70	2013	DHS	64	56	83	85	63	63	16	66	72	92	91	93	90	93	70	64	61	31
Guatemala	69	2014	DHS	66	86	19	90	66	78	8	63	53	85	80	86	82	15	52	49	94	67
Cambodia	69	2014	DHS	56	76	75	93	89	90	79	63	65	80	90	81	0	63	69	35	75	49

Philippines	69	2013	DHS	52	84	12	90	73	72	53	50		58	86	80	0	72	64	49	91	75
Tajikistan	69	2012	DHS	51	52	84		90	80	54	50	34	77	96	97	96	97	63	60	74	95
Myanmar	68	2015	DHS	75	59	50	87	60	71	36	67	51	88	90	91	0	88	58	62	68	65
Rwanda	68	2014	DHS	66	44	82	90	91	43	19	80	87	96	98	95	98	96	54	28	57	62
Sierra Leone	67	2013	DHS	38	76	87	90	60	73	39	54	32	86	84	83	95	97	72	85	58	15
Ghana	66	2014	DHS	41	87	56	88	71	81	23	56	52	95	93	89	94	28	56	49	78	14
Bangladesh	65	2014	DHS	72	31	17	97	42	36	32	51	55	96	97	94	0	99	42	77	97	47
Tanzania	63	2015	DHS	53	51	84	90	64	34	42	51	59	92	97	90	96	87	55	45	50	24
Gambia	62	2013	DHS	24	78	54	92	57	76	6	52	47	98	95	97	95	27	68	59	80	42
Panama	61	2013	MICS	76	88			94	92	93	47	22	52	73	90	92		82	52	95	77
Liberia	60	2013	DHS	37	78	24	89	61	71	35	61	55	88	79	80	48	61	51	60	70	17
Gabon	58	2012	DHS	34	78	76	90	89	60	25	32	6	45	75	64	0	2	68	26	88	41
Sudan	57	2014	MICS	30	51	4	77	78	27	28	69	55	89	93	86	90	72	48	20	59	35
Pakistan	56	2012	DHS	47	37	4	80	55	60	43	18	38	81	72	61	0	98	64	38	89	58
Senegal	55	2015	DHS	44	47	55	91	53	74	50	30	33	97	93	93	93	29	48	32	75	48
Guinea-Bissau	55	2014	MICS	38	65	85	80	45	48	55	34	52	95	87	81	61	87	34	67	69	21
Cameroon	54	2014	MICS	40	59	74	85	65	65	68	31	28	70	85	78	80	99	28	16	65	39
Haiti	53	2012	DHS	45	67	71	88	49	32	19	47	40	82	58	53	48	21	38	53	64	31
Togo	52	2013	DHS	32	57	86	83	45	71	35	61	58	94	89	87	90	6	48	19	63	14
Comoros	52	2012	DHS	28	49		85	82	49	14	34	12	70	91	99	0	12	38	38	84	34
Nepal	50	2014	MICS		69	64	82	56	57	58	55	66	98	87	83	0	79	85	37	88	46
Afghanistan	49	2015	DHS	42	18	5	65	50	40	9	41	43	78	65	62	0	99	62	46	63	39
Niger	49	2012	DHS	35	38	19	85	40	37	13	53	23	93	67	74	61	99	59	41	46	13
Congo (Kinshasa)	47	2013	DHS	16	48	70	85	80	44	8	52	48	92	79	77	0	94	42	39	39	20
Angola	46	2015	DHS	24	61	44	78	50				38	85	64	49	53	14	49	43	41	39
Mali	45	2012	DHS	48	38	35	85	44	58	63	53	33	92	68	75	60	88	23	21	74	31
Yemen	44	2013	DHS	47	25	8	70	45	20	11	53	10	71	71	70	59	8	34	25	70	60
Guinea	41	2012	DHS	16	57	43	80	45	37	25	17	20	93	57	54	0	69	37	34	67	22
Nigeria	38	2013	DHS	32	51	20	63	35	40	14	33	17	84	49	51	0	76	34	34	67	33
Chad	29	2014	DHS	18	31	63	80	20	16	4	23	0	88	46	58	0	85	26	20	43	10

Table 2. Changes in national coverage of Countdown interventions along the continuum of care from 2005-2011 and 2012-2017 for countries with available data in both periods, and proportion of the gap in coverage closed (%) over the two time periods

Indicator	Number of countries	Median coverage (%)		Change (percentage point)	Proportion of gap closed
		2005-2011	2012-2017		
Pre-pregnancy					
Demand for family planning satisfied with modern methods (among married women)	41	37	48	11	17
Pregnancy					
Antenatal care (at least four visits)	47	54	59	5	11
Antenatal care (at least four visits) among adolescent women 15-19	20	46	54	8	15
Intermittent preventive treatment for malaria for pregnant women	29	3	11	8	8
Antiretroviral treatment of pregnant women living with HIV	71	1	66	65	66
Neonatal tetanus protection	75	77	85	8	35
Birth					
Skilled birth attendant	56	52	75	23	48
Skilled birth attendant among adolescent women 15-19	20	52	69	17	35
Institutional deliveries (total)	58	52	72	20	42
Institutional deliveries (public)	41	40	57	17	28
Institutional deliveries (private)	41	5	10	5	5
Caesarean section (total)	46	5	6	1	1
Caesarean section (urban)	41	8	11	3	3
Caesarean section (rural)	41	3	4	1	1
Postnatal					
Postnatal care for mothers	34	36	59	23	36
Postnatal care for adolescent mothers 15-19	16	41	61	20	34
Postnatal care for babies	27	5	42	37	39
Early initiation of breastfeeding	51	46	53	7	13
Infancy					
Exclusive breastfeeding (<6 months)	51	34	48	14	21
Continued breastfeeding (year 1)	51	88	88	0	0
Diphtheria-tetanus-pertussis immunization (three doses)	81	79	87	8	38
Haemophilus influenzae type b immunization (three doses)	81	0	86	86	86
Measles immunization (first dose)	81	76	85	9	38
Pneumococcal conjugate immunization (three doses)	81	0	78	78	78
Rotavirus immunization	81	0	59	59	59
Childhood					
Vitamin A supplementation (two doses)	66	70	72	2	7
Children under-five sleeping under ITNs	30	16	51	35	42
Malaria diagnostics in children under-five	26	16	28	12	14
Careseeking for symptoms of acute respiratory infection	47	48	55	7	13
ORS treatment for diarrhea	49	35	42	7	11
ORS + zinc treatment for diarrhea	26	0	7	7	7
Environment					
Population using basic drinking-water services	79	63	72	9	24
Population using basic sanitation services	80	37	44	7	11
Population sleeping under insecticide-treated net or sleeping in a house sprayed by indoor residual spraying	24	12	50	38	43

Data sources: Immunization rates, World Health Organization (WHO) and United Nations Children's Fund (UNICEF); improved water and sanitation, WHO and UNICEF Joint Monitoring Programme for

Water Supply and Sanitation; pregnant women living with HIV receiving antiretroviral therapy, Joint United Nations Programme on HIV/AIDS; all other indicators, UNICEF global database, July 2017 based on Demographic and Health Surveys, Multiple Indicator Cluster Surveys and other national surveys

Table 3. Composite coverage index (CCI) according to place of residence, woman's age and education and wealth quintiles in 63 Countdown countries with data since 2005.

Data Sources: Re-analysis of Demographic and Health Survey and Multiple Indicator Cluster Survey data sets at the Federal University of Pelotas, International Center for Equity in Health

Footnote: No data were available for Bhutan, Botswana, Djibouti, Equatorial Guinea, Eritrea, Jamaica, Dem. Rep. Korea, Morocco, Nicaragua, Papua New Guinea, Paraguay, Solomon Islands, Somalia, South Africa, South Sudan, Suriname, Uzbekistan, and Venezuela. For age of the woman, the CCI is based on age at the time of the survey for all component variables in the CCI, except for antenatal care and skilled attendant at delivery, when age at the time of delivery is used. Estimates derived from less than 25 observations were omitted.

		<50%	50 --65%	65 --80%	>=80%											
Country	Year	National	Residence		Woman's age			Woman's education			Wealth index					
		All	Rural	Urban	15-17 y	18-19 y	20-49 y	None	Primary	Secondary+	Poorest	2nd	3rd	4th	Richest	
Afghanistan	2015	50.1	46.6	60.5	38.5	41.7	50.4	47.3	59.3	64.6	39.9	45.2	45.4	55.4	63.6	
Algeria	2012	76.4	74.9	77.5	N/A	N/A	N/A	72.1	74.8	77.9	72.5	75.8	76.4	79.4	79.9	
Angola	2015	45.7	27.1	56.3	37.3	42.5	46.3	28.8	40.6	64.6	22.6	32.3	47.0	60.9	71.2	
Azerbaijan	2006	46.8	41.0	52.3	N/A	45.9	46.8	46.7	N/A	47.1	35.8	43.5	50.5	47.5	56.9	
Bangladesh	2014	67.9	65.3	75.5	61.9	65.6	68.6	60.6	63.0	72.0	59.3	65.7	66.8	70.7	79.2	
Benin	2011	51.5	48.9	55.4	43.9	42.5	51.9	48.5	55.8	62.2	39.0	47.5	53.9	56.1	61.0	
Bolivia	2008	61.7	53.7	68.1	55.6	60.2	61.9	50.8	56.4	69.7	49.4	58.0	64.1	68.8	73.8	
Burkina Faso	2010	54.7	51.0	66.5	41.0	52.5	54.9	51.5	63.3	71.8	41.9	47.2	53.7	58.5	68.5	
Burundi	2010	56.1	55.4	63.2	50.1	59.1	56.0	53.3	57.8	67.1	53.1	53.2	57.4	55.4	62.1	
Cambodia	2014	69.4	69.3	70.5	53.1	66.1	69.6	63.9	68.4	73.0	64.1	68.3	72.2	73.2	71.2	
Cameroon	2014	51.6	43.6	61.7	N/A	N/A	N/A	33.6	51.5	64.7	30.3	44.4	55.8	62.9	69.0	
Central African Republic	2010	35.3	24.9	51.3	N/A	N/A	N/A	24.3	35.1	58.5	21.2	23.1	30.5	44.6	59.2	
Chad	2014	28.9	25.2	43.1	27.6	27.9	29.0	22.4	35.4	48.4	22.1	25.5	26.2	27.2	45.9	
Comoros	2012	52.1	49.4	58.0	37.6	53.7	52.7	47.9	51.1	58.0	41.9	48.6	54.7	61.3	57.2	
Congo, Dem. Rep.	2013	43.9	40.7	52.5	45.9	47.3	47.5	37.0	41.1	52.2	35.4	40.3	40.9	48.3	56.3	

Congo, Rep.	2011	58.5	48.9	64.2	51.1	63.1	58.4	44.0	51.7	63.4	45.7	55.0	59.5	64.8	70.3
Côte d'Ivoire	2011	44.1	36.4	55.6	45.1	40.4	44.4	38.2	50.6	59.5	29.8	38.9	41.9	53.5	60.2
Dominican Republic	2014	78.4	77.7	78.6	N/A	N/A	N/A	67.7	76.8	79.6	74.3	78.2	80.5	78.3	82.2
Ethiopia	2011	35.1	30.6	60.0	16.8	34.5	35.3	29.9	40.0	75.5	22.3	29.7	30.7	37.1	61.4
Gabon	2012	58.3	47.5	60.2	45.9	50.7	59.6	49.5	52.2	61.0	47.5	57.1	57.8	68.3	61.7
Gambia, The	2013	61.5	57.8	65.0	52.5	60.0	61.7	59.7	59.4	66.1	58.0	58.2	59.4	64.2	67.1
Ghana	2014	65.5	63.6	68.2	46.6	69.4	65.5	58.8	65.8	68.6	60.7	61.3	68.0	69.0	70.2
Guatemala	2014	72.8	69.9	77.6	66.3	68.3	73.3	65.8	70.6	80.6	63.5	68.5	74.8	79.5	83.2
Guinea	2012	41.8	35.6	58.9	35.3	41.0	42.1	37.9	49.7	61.2	27.9	35.2	40.5	48.1	63.4
Guinea-Bissau	2014	52.4	45.6	61.8	N/A	N/A	N/A	44.7	56.4	68.3	43.6	46.6	49.7	60.3	63.7
Guyana	2014	73.7	74.6	68.0	N/A	N/A	N/A	65.8	73.4	73.9	70.6	73.3	71.6	78.5	72.7
Haiti	2012	52.7	49.4	58.5	50.7	48.4	53.1	40.6	49.9	62.1	43.5	46.8	54.9	58.5	64.2
Honduras	2011	79.7	77.7	82.0	77.1	77.7	80.0	71.1	78.4	82.9	74.1	78.8	81.3	82.2	83.6
India	2005	55.4	50.8	68.4	35.6	41.8	56.2	44.4	56.6	68.7	39.0	47.3	56.9	66.3	76.9
Indonesia	2012	75.2	72.9	77.6	74.5	70.4	75.4	50.1	70.8	77.8	63.0	76.4	78.6	80.7	78.5
Iraq	2011	63.8	58.9	66.3	N/A	N/A	N/A	57.3	62.8	68.8	56.0	63.0	65.0	68.7	69.2
Kenya	2014	70.5	67.0	76.4	69.8	67.1	70.5	51.3	68.9	77.9	56.5	67.3	71.5	76.2	80.1
Kyrgyz Republic	2014	71.6	71.1	74.0	N/A	N/A	N/A	N/A	N/A	71.8	70.0	70.4	71.2	73.2	74.4
Lao PDR	2011	54.9	51.0	71.4	N/A	N/A	N/A	38.0	56.0	71.5	38.5	47.0	60.8	68.2	78.4
Lesotho	2014	75.3	74.1	78.4	60.5	71.5	75.8	70.1	71.4	78.5	70.5	72.0	77.5	76.1	79.8
Liberia	2013	60.3	56.6	63.6	58.2	59.2	60.4	55.4	59.3	67.5	50.7	59.4	63.9	65.3	64.6
Madagascar	2008	49.8	47.7	65.1	41.7	46.0	50.4	36.4	50.7	63.3	36.7	43.2	50.5	58.3	68.3
Malawi	2015	77.3	77.0	79.8	69.0	73.6	77.7	74.1	77.4	79.0	75.4	76.6	77.0	78.8	79.2
Mali	2012	45.2	40.5	62.4	38.6	49.9	45.1	41.8	50.5	69.5	30.1	37.4	39.1	54.3	64.3
Mauritania	2011	48.7	41.4	59.2	N/A	N/A	N/A	41.5	51.2	60.5	32.4	41.0	50.4	58.7	61.9
Mozambique	2011	54.7	49.0	67.2	58.1	56.4	54.4	44.7	56.4	72.6	40.6	44.8	53.5	62.3	72.1
Myanmar	2015	67.8	63.8	80.4	58.0	58.9	68.2	49.0	65.9	77.8	57.1	62.8	68.4	76.9	84.4
Namibia	2013	77.0	73.8	80.0	66.0	70.0	77.3	61.4	71.1	80.3	70.3	76.4	77.9	78.8	81.4
Nepal	2014	66.3	64.7	76.8	N/A	N/A	N/A	62.2	63.9	69.7	58.5	63.5	64.1	71.0	78.6

Niger	2012	48.7	45.0	67.7	40.6	47.8	49.0	45.8	58.7	70.7	38.0	44.1	44.6	49.5	65.4
Nigeria	2013	38.3	28.1	55.9	20.0	25.2	39.2	19.0	41.2	60.2	13.0	24.5	40.4	51.7	68.4
Pakistan	2012	53.6	48.7	64.7	45.8	47.9	53.7	45.0	56.3	68.8	37.6	47.9	53.5	62.0	71.7
Panama	2013	79.0	72.2	83.6	N/A	N/A	N/A	52.0	72.3	82.7	65.2	83.8	81.0	89.0	83.8
Philippines	2013	69.0	66.3	72.3	53.3	66.8	69.2	40.2	62.3	71.3	58.8	67.6	74.1	74.7	76.4
Rwanda	2014	68.0	67.4	71.2	71.5	70.0	68.0	63.0	68.1	74.3	63.9	68.0	68.9	69.5	72.0
Senegal	2015	55.3	50.2	63.5	40.7	48.8	55.8	50.3	62.3	67.3	43.8	51.7	57.2	60.7	68.2
Sierra Leone	2013	66.9	64.7	72.3	59.6	64.2	67.2	64.4	69.8	73.9	64.1	63.8	65.1	69.5	73.1
Sudan	2014	52.3	47.8	63.3	N/A	N/A	N/A	40.2	54.3	66.4	33.1	43.9	55.1	61.4	69.2
Swaziland	2014	83.3	83.2	82.8	N/A	N/A	N/A	80.5	77.8	85.7	80.4	83.3	83.7	82.9	85.1
Tajikistan	2012	69.4	68.3	73.1	N/A	65.4	69.3	64.0	58.2	70.1	66.1	66.2	73.0	70.8	73.3
Tanzania	2015	65.2	61.4	74.2	57.1	62.1	65.3	53.9	66.0	75.1	51.7	59.2	65.0	72.0	78.4
Timor-Leste	2009	55.8	53.4	63.2	N/A	50.3	56.0	47.9	55.5	62.5	43.5	50.1	56.0	60.5	68.1
Togo	2013	52.1	47.4	60.6	49.8	38.8	52.5	44.2	53.8	63.3	46.0	46.2	47.7	56.4	65.7
Turkmenistan	2015	79.9	80.2	79.4	N/A	N/A	N/A	N/A	N/A	79.9	81.8	78.4	81.0	78.5	79.9
Uganda	2011	58.3	56.4	68.8	49.4	59.3	58.3	51.9	56.2	67.9	51.4	54.5	56.0	60.6	68.9
Yemen, Rep.	2013	43.7	38.1	57.6	45.3	41.0	43.7	37.2	48.0	58.8	28.4	35.9	43.4	51.2	62.0
Zambia	2013	69.9	65.3	78.1	62.1	72.7	69.7	60.4	67.2	77.1	61.4	65.7	68.1	76.1	81.8
Zimbabwe	2015	73.6	71.1	79.7	63.5	72.8	73.7	72.0	66.1	77.0	66.9	69.1	76.4	76.6	81.8
Countries with data		63	63	63	45	48	48	61	60	63	63	63	63	63	63
% CCI <50%		22.2%	41.3%	1.6%	48.9%	39.6%	22.9%	50.8%	15.0%	3.2%	50.8%	42.9%	22.2%	11.1%	1.6%
Median value	2013	58.3%	53.7%	67.2%	50.1%	57.6%	57.3%	49.5%	58.4%	69.5%	49.4%	55.0%	59.4%	65.3%	70.3%

Figure 1: Average annual rate of decline for under-five and neonatal mortality levels, stillbirth rates and maternal mortality ratio during 2000-2015 (estimated) and 2015-2030 (projected to reach SDG 2030 target), country median for the 50 highest mortality Countdown countries.

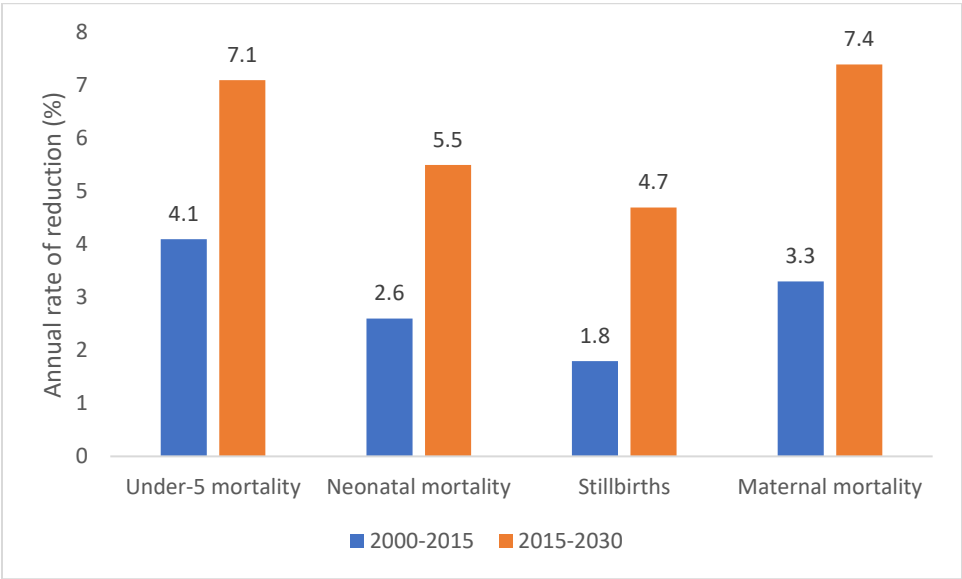


Figure 2. Trends in stunting prevalence among children under five years of age by wealth (20% poorest and 20% richest) in 53 Countdown countries with available data between 1993 and 2015, weighted analysis for population of children under five years of age.

Data sources: Re-analysis of Demographic and Health Survey and Multiple Indicator Cluster Survey data sets at the Federal University of Pelotas, International Center for Equity in Health

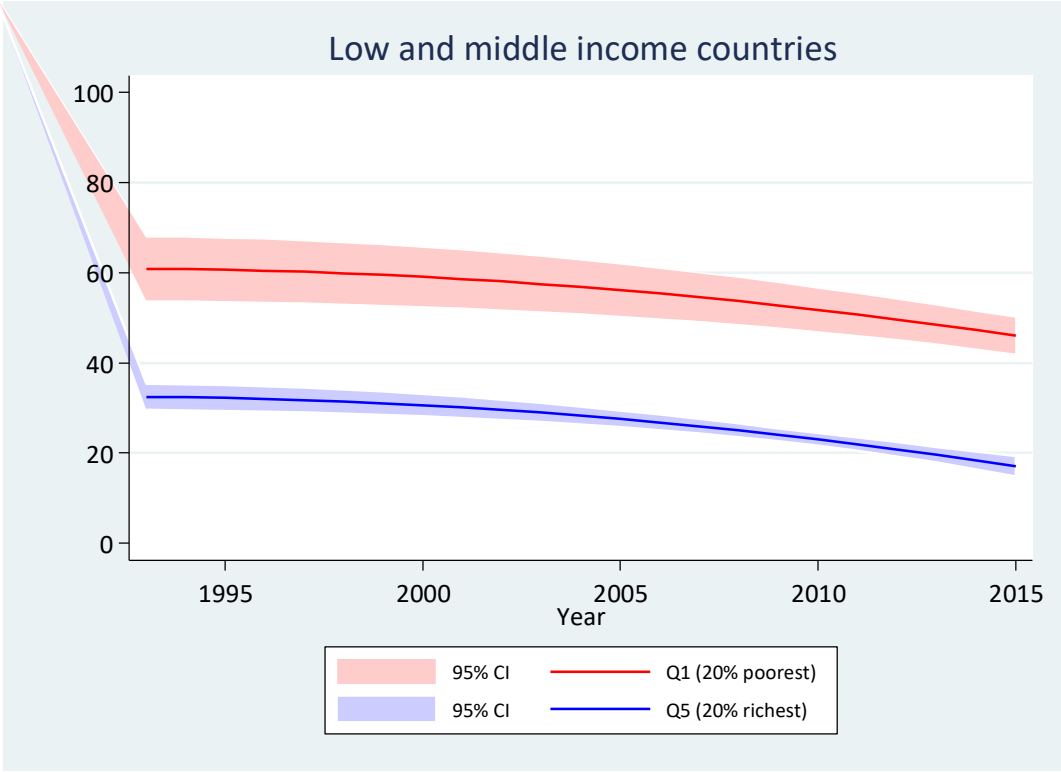


Figure 3: Coverage of interventions across the continuum of care (universal interventions), Countdown to 2030 countries with recent data, 2012 or later (attached separately due to size and formatting)

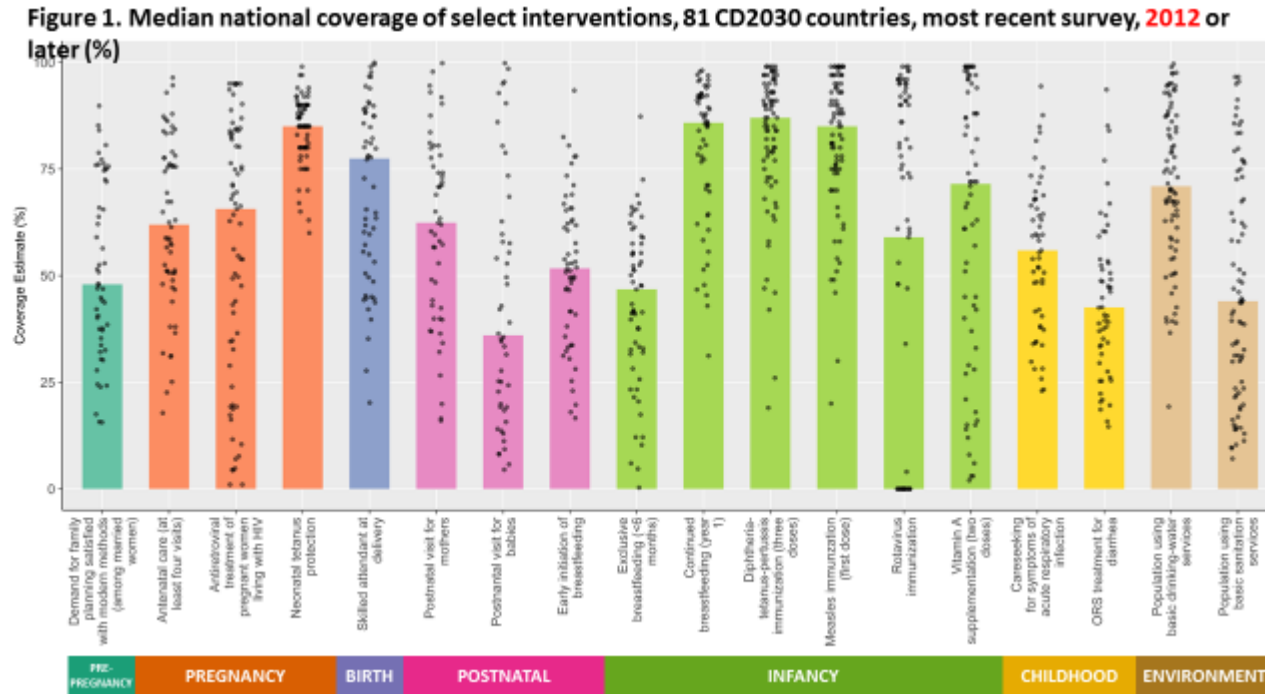


Figure 4. Countdown countries ranked according to the degree of absolute inequality (brown line) in the composite coverage index (CCI), with coverage rates in the poorest and richest wealth quintiles.

Data sources: Re-analysis of Demographic and Health Survey, Multiple Indicator Cluster Survey, and Reproductive and Health survey data sets at the Federal University of Pelotas, International Center for Equity in Health

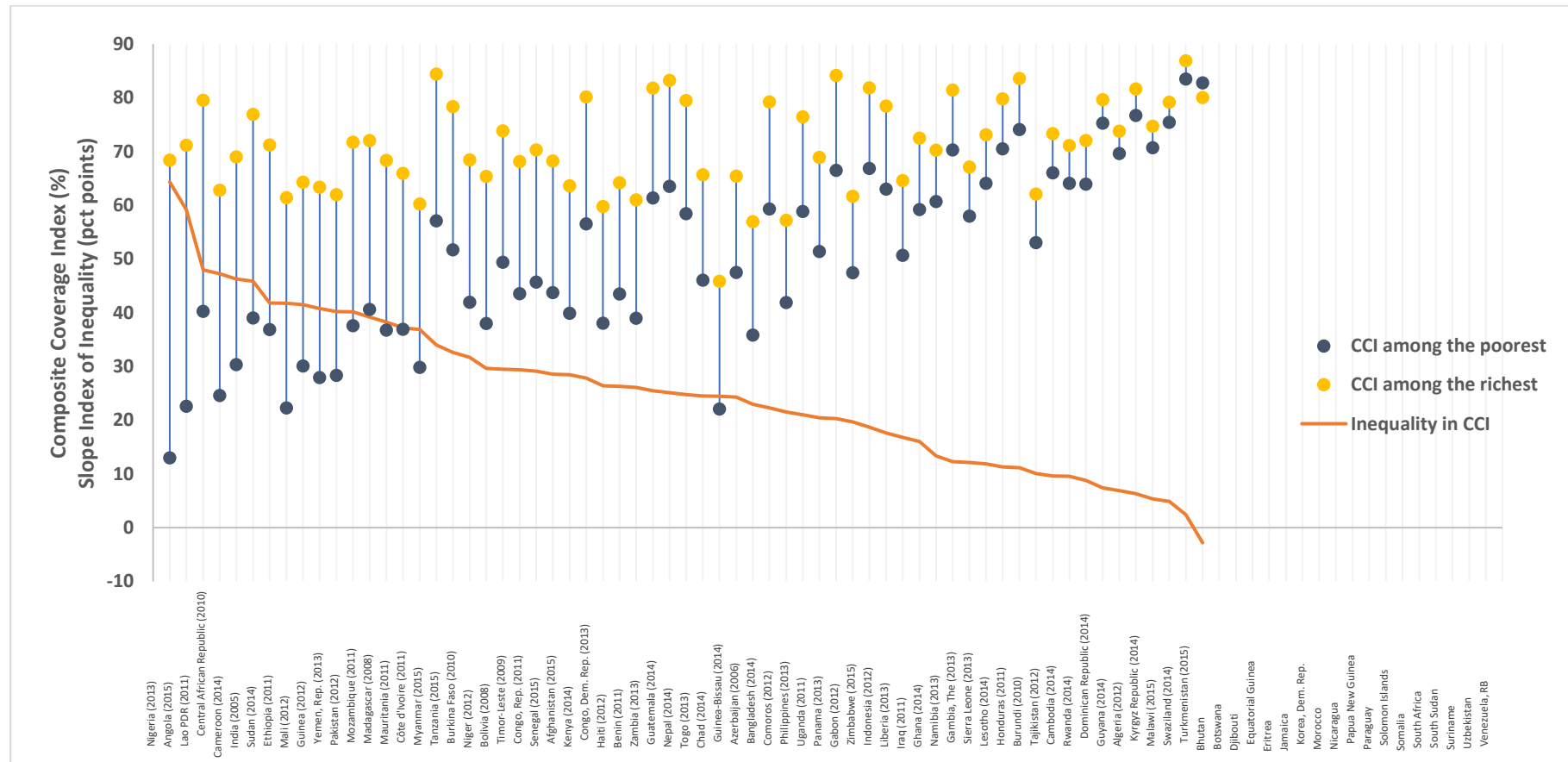


Figure 5. CCI by region in selected Countdown countries with wide and narrow subnational geographic inequalities.

Data Sources: Re-analysis of Demographic and Health Survey, Multiple Indicator Cluster Survey and Reproductive and Health Survey data sets at the Federal University of Pelotas, International Center for Equity in Health

Footnote: The names and level of CCI for each subnational region per country is included in the country equity profiles available at <http://www.countdown2030.org>

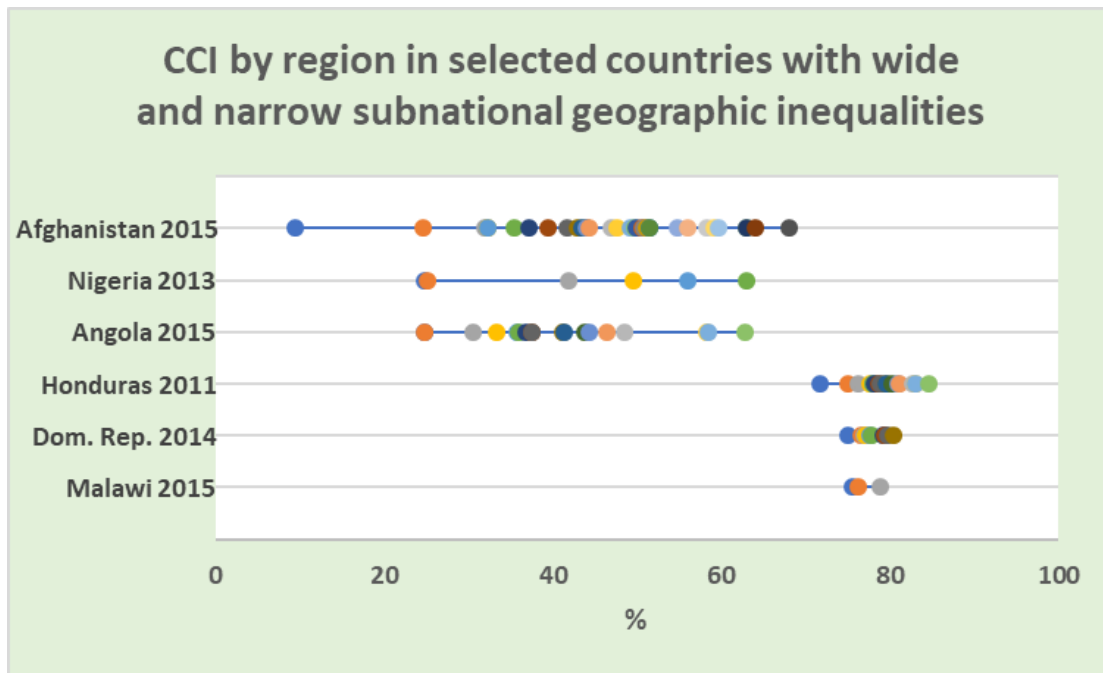


Figure 6. CCI trends by wealth (20% poorest and 20% richest) in countries with two or more surveys between 1993 and 2015, according to country income groupings.

Data Sources: Re-analysis of Demographic and Health Survey, Multiple Indicator Cluster Survey and Reproductive and Health survey data sets at the Federal University of Pelotas, International Center for Equity in Health

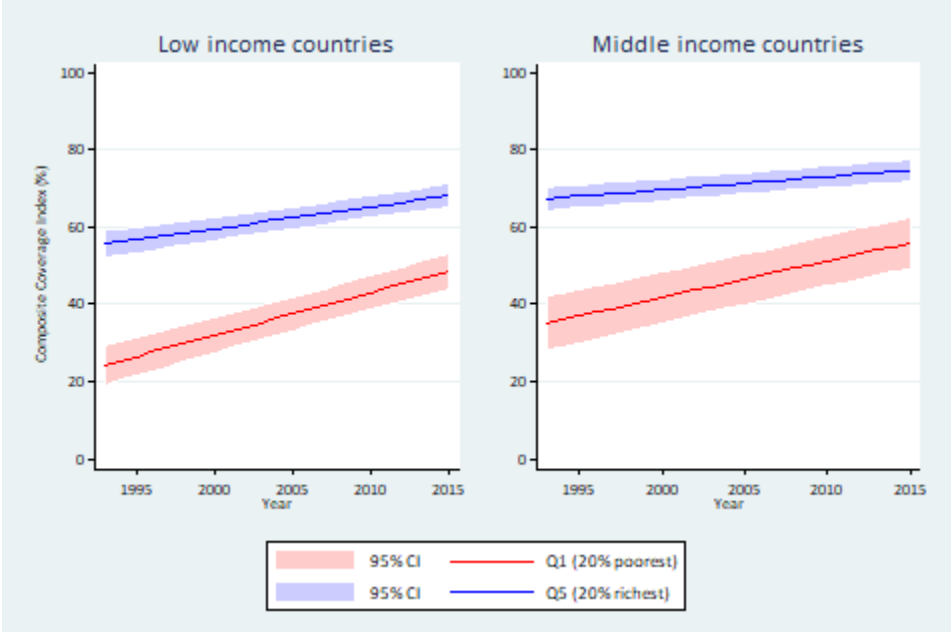
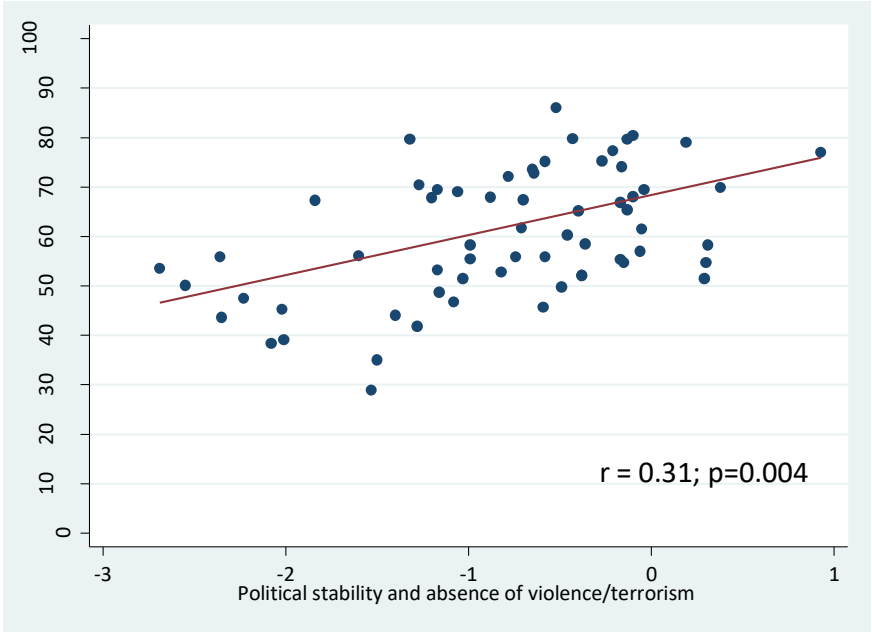


Figure 7. Panel 3. CCI according to political stability/ absence of violence, 59 Countdown countries. *



*Adjusted for GDP per capita, Gini coefficient for income distribution and country and population surface area
Each dot represents one country.

Data Sources: Re-analysis of Demographic and Health Survey and Multiple Indicator Cluster Survey data sets at the Federal University of Pelotas, International Center for Equity in Health