

LONDON
SCHOOL of
HYGIENE
& TROPICAL
MEDICINE



LSHTM Research Online

Rajendran, A; Dhoble, P; Sundaresan, P; Saravanan, V; Vashist, P; Nitsch, D; Smeeth, L; Chakravarthy, U; Ravindran, RD; Fletcher, AE; (2017) Genetic risk factors for late age-related macular degeneration in India. The British journal of ophthalmology. ISSN 0007-1161 DOI: <https://doi.org/10.1136/bjophthalmol-2017-311384>

Downloaded from: <http://researchonline.lshtm.ac.uk/id/eprint/4646072/>

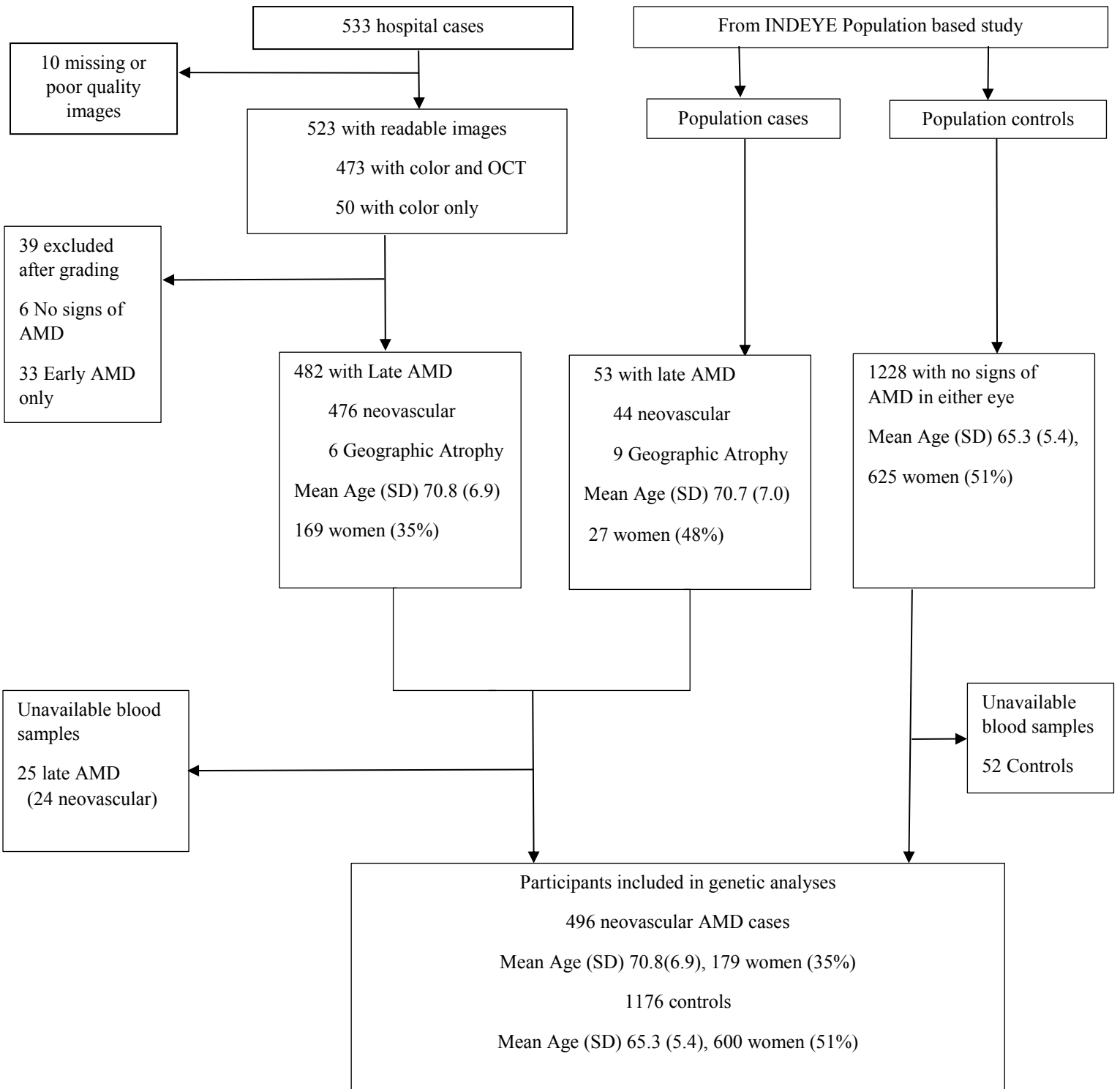
DOI: <https://doi.org/10.1136/bjophthalmol-2017-311384>

Usage Guidelines:

Please refer to usage guidelines at <https://researchonline.lshtm.ac.uk/policies.html> or alternatively contact researchonline@lshtm.ac.uk.

Available under license: <http://creativecommons.org/licenses/by-nc-nd/2.5/>

<https://researchonline.lshtm.ac.uk>



533 hospital cases

From INDEYE Population based study

10 missing or poor quality images

523 with readable images
473 with color and OCT
50 with color only

Population cases

Population controls

39 excluded after grading
6 No signs of AMD
33 Early AMD only

482 with Late AMD
476 neovascular
6 Geographic Atrophy
Mean Age (SD) 70.8 (6.9)
169 women (35%)

53 with late AMD
44 neovascular
9 Geographic Atrophy
Mean Age (SD) 70.7 (7.0)
27 women (48%)

1228 with no signs of AMD in either eye
Mean Age (SD) 65.3 (5.4),
625 women (51%)

Unavailable blood samples
25 late AMD
(24 neovascular)

Unavailable blood samples
52 Controls

Participants included in genetic analyses
496 neovascular AMD cases
Mean Age (SD) 70.8(6.9), 179 women (35%)
1176 controls
Mean Age (SD) 65.3 (5.4), 600 women (51%)