

Published as: *Mol Biochem Parasitol.* 2010 March ; 170(1): 49–53.

## ***Plasmodium berghei* crystalloids contain multiple LCCL proteins**

**Sadia Saeed<sup>1</sup>, Victoria Carter<sup>1,2</sup>, Annie Z. Tremp, and Johannes T. Dessens\***

Department of Infectious and Tropical Diseases, London School of Hygiene & Tropical Medicine, Keppel Street, London WC1E 7HT, United Kingdom

### **Graphical abstract**

This paper describes the gametocyte-specific expression and subsequent targeting of two LCCL proteins to the crystalloids of *Plasmodium berghei* ookinetes using GFP-tagging.

### **Abstract**

Malaria crystalloids are unique organelles of unknown function that are present only in the mosquito-specific ookinete and early oocyst stages of the parasite. Recently, crystalloid formation in *Plasmodium berghei* was linked to the parasite protein *PbSR*, a member of the *Plasmodium* LCCL protein family composed of six modular multidomain proteins involved in sporozoite development and infectivity. Here, we show by fluorescent protein tagging that two other LCCL protein family members are targeted to the crystalloids in a similar way to *PbSR*. These results extend the similarities between the LCCL proteins, and provide strong supporting evidence for the hypothesis that members of this protein family work in concert and are involved in a similar molecular process.

### **Keywords**

Protein trafficking; Enzyme complex; Malaria transmission

---

Transmission of malaria parasites starts with the ingestion of gametocytes by vector mosquitoes during blood feeding on a parasite-infected host. Rapid gametogenesis and fertilization occur in the mosquito midgut, giving rise to motile ookinetes that transform into oocysts following their traversal of the midgut epithelium. After an approximately two-week period of growth, mature oocysts release thousands of motile sporozoites that invade the salivary glands of the insect and subsequently enter the vertebrate host during blood feeding to initiate new malaria infections.

*Plasmodium* LCCL proteins are a family of proteins important for malaria parasite transmission. Their name is based on the *Limulus* clotting factor **C**, **Coch-5b2**, **Lg11** (LCCL) domain [1] that is present in all but one family member. Six family members (named *PLAPs* or *PCCPs*) have been identified to date, which are predicted modular proteins containing ER

---

© 2010 Elsevier B.V.

\*Corresponding author. Tel.: +44 2076127865; fax: +44 2076374314. Johannes.Dessens@lshtm.ac.uk.

<sup>1</sup>These authors contributed equally to the work.

<sup>2</sup>Current address: Institute for Science and Technology in Medicine, Huxley Building, Keele University, Staffordshire ST5 5BG, United Kingdom.

This document was posted here by permission of the publisher. At the time of deposit, it included all changes made during peer review, copyediting, and publishing. The U.S. National Library of Medicine is responsible for all links within the document and for incorporating any publisher-supplied amendments or retractions issued subsequently. The published journal article, guaranteed to be such by Elsevier, is available for free, on ScienceDirect.

signal peptides and multiple adhesive domains implicated in lipid, protein and carbohydrate binding [2–6]. All LCCL protein family members identified to date are highly conserved between *Plasmodium* species. For example, *P. falciparum* PfCCp3 not only has an identical domain composition and topology to its *P. berghei* orthologue *PbSR* (also known as *PbLAP1*), but shares 63% and 76% amino acid identity and similarity, respectively. *PbSR* is the founding member of the LCCL protein family and was the first to be characterized by gene disruption, which revealed an essential role in sporozoite, but not oocyst, development in mosquitoes [4]. It was shown subsequently that low levels of sporozoite formation were supported in *PbSR* knockout parasites, but salivary gland infectivity was never observed [7]. Very similar loss-of-function phenotypes involving sporozoite development have been described for other members of the family in *P. berghei*: *PbLAP2*, 4, 5 and 6 [8,9]. In *P. falciparum*, knockout of PfCCp3 (orthologue of *PbSR*) or PfCCp2 (orthologue of *PbLAP4*) appeared to have no adverse effect on oocyst sporulation, but the resulting sporozoites were again not infective to mosquito salivary glands [5]. The reported differences in sporulation rates between *PbSR* and PfCCp3 knockout parasites may be the result of small differences in the function of the LCCL proteins between the two malaria species. In view of the compelling structural conservation of these proteins it seems equally likely that they may reflect quantitative rather than qualitative differences that are influenced by the distinct experimental setups (such as vector species) used in these studies. The latter is supported by the fact that very different sporulation levels of *PbSR* knockout oocysts are observed under *in vitro* and *in vivo* conditions [7]. What is clear in both species is that LCCL proteins have critical roles in the development of infective sporozoites, pointing to the oocyst as a likely site of action.

Despite their apparent roles associated with sporozoite development and infectivity, both *PbSR* and PfCCp3 are synthesized in gametocytes rather than, as one might intuitively expect, in oocysts or sporozoites [5,7,10]. Growing evidence suggests the same applies to the other LCCL proteins in *P. falciparum* [2,5,11–13] and in *P. berghei* [6,14,15]. These proteins are thus unusual in that their synthesis precedes their apparent function by several days and, for that matter, by several developmental transitions, the precise reason for which has remained unclear. Recently, it was demonstrated that *PbSR*, after being synthesized in macrogametocytes, is trafficked to the oocysts in an unusual way, namely via the ookinete's crystalloids [7], offering an explanation for the observed gap between protein synthesis and function. Crystalloids are transient organelles resembling cytoplasmic inclusion bodies that form in ookinetes and disappear after ookinete-to-oocyst transformation. The function of the *Plasmodium* crystalloids is poorly understood, but it has been postulated that they may constitute a reservoir of protein synthesized by the macrogametocyte that is used by the parasite during oocyst growth and sporozoite development [16,17]. The recent study by Carter et al. [7] also showed that parasite lines that lacked *PbSR* expression, or that expressed a dysfunctional mutant version of *PbSR*, did not form crystalloids. This discovery of a functional link between the crystalloids and *PbSR* points to a central role for the crystalloids in the functioning of *PbSR* and, potentially, other LCCL protein family members. The similarities between LCCL protein family members with respect to their structures, expression patterns, and loss-of-function phenotypes suggests that they could be involved in the same molecular processes and could be operating in concert. To further investigate this hypothesis we decided to determine the protein expression, subcellular localization and trafficking, in live *P. berghei* parasites, of two other members of the family, *PbLAP2* and *PbLAP3* (also known as *PbCCp1* and *PbCCp5*, respectively), using a green fluorescent protein (GFP) tagging approach.

*PbLAP2* is encoded by a single exon gene and is composed of 1614 amino acids, while the *pbLAP3* gene contains a single predicted intron and encodes a 1049 residue protein. Both gene products possess predicted amino terminal ER signal peptides, which upon cleavage

gives rise to mature proteins of predicted sizes of 180 kDa (*PbLAP2*) and 120 kDa (*PbLAP3*). *PbLAP2* shares 67% and 80% amino acid identity and similarity, respectively, with its *P. falciparum* orthologue *PfCCp1*. For *PbLAP3* and its *P. falciparum* orthologue *PfCCp5* these values are 52% and 69%, respectively. The domains identified in *PLAP2* (*PCCp1*) and *PLAP3* (*PCCp5*) have been described previously [2–6]. Briefly, the identified protein domains of *PLAP2* (*PCCp1*) include a ricin B-related domain; a discoidin-like domain; a fibrillar collagen-associated domain; one LCCL domain; two tandem levanase-like domains; and two tandem carboxy-terminal cysteine-rich domains. The identified modules of *PLAP3* (*PCCp5*) include besides a single LCCL domain a fibronectin-like domain, an anthrax protective antigen-like domain, and a discoidin-like domain.

To achieve GFP-tagging of *PbLAP2* we adopted a strategy of single crossover homologous recombination (Fig. 1A). A 2.3 kb fragment of *pblap2* corresponding to the 3'-part of the coding sequence was PCR amplified from genomic DNA with primers P1 and P2 (Fig. 1A) and introduced into *SalI/HindIII*-digested pDNR-EGFP [7], via in-fusion cloning (BD Biosciences) to give plasmid pDNR-PbLAP2/EGFP. The *pblap2/egfp*-specific sequence was then transferred to pLP-hDHFR via *cre-loxp* recombination to give plasmid pLP-PbLAP2/EGFP (Fig. 1A). Plasmid pLP-hDHFR was previously constructed by introducing the human *dhfr* gene cassette (i.e. *dhfr* flanked by 5' and 3' UTRs from *pbdhfr*) into *SphI/NdeI*-digested pLP-DHFR2 [18]. To achieve GFP-tagging of *PbLAP3* we used a strategy of double crossover homologous recombination (Fig. 1B). The entire *pblap3* coding sequence plus 0.6 kb of upstream sequence was PCR amplified from genomic DNA with primers P3 and P4 (Fig. 1B) and cloned into *SalI/HindIII*-digested pDNR-EGFP to give plasmid pDNR-PbLAP3/EGFP. The 3' UTR of *pblap3* was amplified with primers P5 and P6 (Fig. 1B) and the resulting 0.7 kb fragment cloned into *NdeI*-digested pLP-hDHFR by in-fusion cloning to give plasmid pLP-hDHFR/PbLAP3. The *pblap3/egfp*-specific sequence from pDNR-PbLAP3/EGFP was transferred to pLP-hDHFR/PbLAP3 by *cre-loxp* recombination to give the final construct pLP-PbLAP3/EGFP (Fig. 1B).

pLP-PbLAP2/EGFP was linearized with *PacI* prior to transfection of purified schizonts. pLP-PbLAP3/EGFP was doubly digested with *KpnI* and *SacII* prior to transfection (Fig. 1). After transfection, pyrimethamine-resistant parasites were selected and cloned as described [19] to give parasite lines *PbLAP2/EGFP* and *PbLAP3/EGFP*, respectively. Diagnostic PCR using primers P7 and P8 (Fig. 1A) amplified a unique 2.5 kb fragment from parasite line *PbLAP2/EGFP* (Fig. 1C), confirming correct integration of the *egfp* sequence downstream of the *pblap2* allele. Diagnostic PCR using primers P9 and P10 (Fig. 1B) amplified a unique 1.8 kb fragment from parasite line *PbLAP3/EGFP* (Fig. 1C), confirming correct integration of the *dhfr* selectable marker gene cassette into the *pblap3* locus. Both parasite lines displayed normal parasite development in mouse and mosquito hosts, indicating that the GFP tags did not adversely affect protein function.

To study *PbLAP2* and *PbLAP3* protein expression we assessed live parasites by confocal and UV microscopy. Blood stage parasites of *PbLAP2/EGFP* and *PbLAP3/EGFP* parasite lines displayed green GFP-based fluorescence in gametocytes (Fig. 2A), confirming the gametocyte-specific *PbLAP2* and *PbLAP3* expression predicted from GFP reporter studies [15,20]. Both *PbLAP2* and *PbLAP3* were observed distributed throughout the parasite cytoplasm in a somewhat punctate pattern (Fig. 2A), which is very similar in appearance to the subcellular localization of *PbSR* observed in this life stage [7]. In ookinetes, on the other hand, the typical distribution of *PbLAP2* and *PbLAP3* was confined to two focal spots, often visibly associated with clusters of malaria pigment (Fig. 2B). This localization is again very similar to that observed in ookinetes of parasite lines expressing GFP- or red fluorescent protein (RFP)-tagged *PbSR* [7]. GFP-based fluorescence was neither observed in mature oocysts (Fig. 2C) nor in midgut- and salivary gland-associated sporozoites (data not

shown), indicating that neither *PbLAP2* nor *PbLAP3* are present at discernible levels during this part of the life cycle. These observations are again in full agreement with GFP reporter studies [15]. The unique appearance of the fluorescent spots found in ookinetes of parasite lines *PbLAP2/EGFP* and *PbLAP3/EGFP* (Fig. 2B), in particular their co-localization with malaria pigment, strongly indicated that they correspond to the crystalloids as was recently demonstrated for *PbSR* [7]. Indeed, the presence of *PbLAP2* and *PbLAP3* in crystalloids was confirmed by immunogold EM experiments (Fig. 2D) carried out as previously described [7]. Thus, the expression pattern, subcellular localization and trafficking of *PbLAP2* and *PbLAP3* appear to be very similar, if not identical, to those of *PbSR* [7].

Our data demonstrate the use of GFP-tagging of *PbLAP2* and *PbLAP3* in genetically modified *P. berghei* lines to determine their expression, subcellular localization and trafficking in live parasites. Our data show that *PbLAP2* and *PbLAP3* are both targeted to the crystalloids, similar to *PbSR*, thereby increasing by three-fold the total number of crystalloid proteins identified to date. Within the LCCL protein family, *PbLAP2* and *PbLAP4* are close structural paralogues, and the same is true for *PbLAP3* and *PbLAP5*. It is quite likely, therefore, that *PbLAP4* and *PbLAP5* display the same expression and trafficking as shown here for their structural paralogues. The fact that three structurally distinct LCCL protein family members follow the same unusual protein trafficking pathway in *P. berghei* adds strong experimental support for the hypothesis that at least several, and perhaps all, *Plasmodium* LCCL proteins are involved in the same molecular processes facilitating sporozoite development and infectivity. It is likely that this is achieved as a molecular complex containing multiple LCCL protein family members. Indeed, evidence for intermolecular interactions of different LCCL proteins in *P. falciparum* gametocytes was recently reported [13].

Using a different detection method, indirect immunofluorescence, *PfCCp* molecules in *P. falciparum* gametocytes have been shown to associate with the parasite plasma membrane, parasitophorous vacuole, and even the host erythrocyte [5,10–13], suggesting an extracellular role for these molecules during gametogenesis and fertilization. We did not observe clear evidence for a similar scenario in *P. berghei* (for instance, an accumulation of the LCCL proteins at the parasite periphery as observed in *P. falciparum*), but this could reflect the substantial differences in gametocytogenesis that exist between the two *Plasmodium* species. The observed pattern of distribution of *PbLAP2* and *PbLAP3* (Fig. 2A) and, for that matter, *PbSR* [7] in gametocytes is, in fact, not inconsistent with a vesicular localization, which could point to secretion of these proteins during gametogenesis as appears to be the case in *P. falciparum*. Thus, while it is clear that after fertilization *PbSR*, *PbLAP2* and *PbLAP3* redistribute to the crystalloids, we should consider the possibility that some of the protein may be secreted before this event.

This paper provides further evidence that the crystalloids play a central role in the function of the LCCL proteins in *P. berghei*. The exact nature, however, of the molecular processes that lead to crystalloid formation to facilitate sporozoite development and infectivity remains poorly understood. The two new cellular markers for the crystalloids identified here will provide useful new tools for addressing this intriguing question.

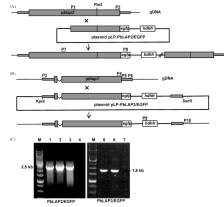
## References

1. Trexler M. Banyai L. Patthy L. Eur J Biochem. 2000; 267(18):5751–5757. [PubMed: 10971586]
2. Lasonder E. Ishihama Y. Andersen J.S. Nature. 2002; 419(6906):537–542. [PubMed: 12368870]
3. Dessens J.T. Sinden R.E. Claudianos C. Trends Parasitol. 2004; 20(3):102–108. [PubMed: 16482225]

4. Claudianos C. Dessens J.T. Trueman H.E. *Mol Microbiol.* 2002; 45(6):1473–1484. [PubMed: 12354219]
5. Pradel G. Hayton K. Aravind L. *J Exp Med.* 2004; 199(11):1533–1544. [PubMed: 15184503]
6. Trueman H.E. Raine J.D. Florens L. *J Parasitol.* 2004; 90(5):1062–1071. [PubMed: 15562607]
7. Carter V. Shimizu S. Arai M. Dessens J.T. *Mol Microbiol.* 2008; 68(6):1560–1569. [PubMed: 18452513]
8. Raine J.D. Ecker A. Mendoza J. Tewari R. Stanway R.R. Sinden R.E. *PLoS Pathog.* 2007; 3(3):e30. [PubMed: 17335349]
9. Ecker A. Bushell E.S. Tewari R. Sinden R.E. *Mol Microbiol.* 2008; 70(1):209–220. [PubMed: 18761621]
10. Delrieu I. Waller C.C. Mota M.M. Grainger M. Langhorne J. Holder A.A. *Mol Biochem Parasitol.* 2002; 121(1):11–20. [PubMed: 11985859]
11. Pradel G. Wagner C. Mejia C. Templeton T.J. *Exp Parasitol.* 2006; 112(4):263–268. [PubMed: 16388802]
12. Scholz S.M. Simon N. Lavazec C. Dude M.A. Templeton T.J. Pradel G. *Int J Parasitol.* 2008; 38(3–4):327–340. [PubMed: 17950739]
13. Simon N. Scholz S.M. Moreira C.K. *J Biol Chem.* 2009; 284(21):14537–14546. [PubMed: 19304662]
14. Hall N. Karras M. Raine J.D. *Science.* 2005; 307(5706):82–86. [PubMed: 15637271]
15. Lavazec C. Moreira C.K. Mair G.R. Waters A.P. Janse C.J. Templeton T.J. *Mol Biochem Parasitol.* 2009; 163(1):1–7. [PubMed: 18848846]
16. Garnham P.C. Bird R.G. Baker J.R. *Trans R Soc Trop Med Hyg.* 1962; 56:116–120. [PubMed: 13897014]
17. Garnham P.C. Bird R.G. Baker J.R. Desser S.S. el-Nahal H.M. *Trans R Soc Trop Med Hyg.* 1969; 63(2):187–194. [PubMed: 5794450]
18. Tremp A.Z. Khater E.I. Dessens J.T. *J Biol Chem.* 2008; 283(41):27604–27611. [PubMed: 18650444]
19. Janse C.J. Ramesar J. Waters A.P. *Nat Protoc.* 2006; 1(1):346–356. [PubMed: 17406255]
20. Khan S.M. Franke-Fayard B. Mair G.R. *Cell.* 2005; 121(5):675–687. [PubMed: 15935755]

## Acknowledgments

The authors wish to thank E. Brooks and M. McCrossan for assistance with confocal and electron microscopy, respectively. This work was supported by the Wellcome Trust.

**Fig. 1.**

Generation and molecular analysis of genetically modified parasite lines. (A) Targeting strategy for GFP-tagging *PbLAP2* via single crossover homologous recombination. (B) Targeting strategy for GFP-tagging *PbLAP3* via double crossover homologous recombination. The *pblap* genes are indicated with coding sequence (wide bars) and noncoding sequence (narrow bars). Also indicated are the enhanced GFP module (*egfp*); the human *dhfr* selectable marker gene cassette (*hdhfr*); the intron in *pblap3* (v-shaped line); the position of key restriction sites (*PacI*, *KpnI*, *SacII*); and primers used for PCR amplification (P1–P10). (C) Diagnostic PCR of genomic DNA from three *PbLAP2/EGFP* clones (lanes 1–3) and two *PbLAP3/EGFP* clones (lanes 5 and 6). In lanes 4 and 7 genomic DNA (gDNA) from wild-type parasites was used as template. M = Generuler 1 kb DNA ladder (Fermentas).

Primer sequences: P1

(ACGAAGTTATCAGTCGACATGAGTCATTACTAGACATAATTACAAGTGAA);  
P2

(ATGAGGGCCCCTAAGCTTTTCAGTAATTCCATGAGTTACTTTGC); P3

(ACGAAGTTATCAGTCGAGGTACCTAGCGGAAACAACAATGTTC); P4

(ATGAGGGCCCCTAAGCTATTTTTAATAATTTGTATCGAAAGTATAGTTG); P5

(CCTTCAATTTTCGACATATAATGGATTAATAATTTTAGTTTCGGT); P6

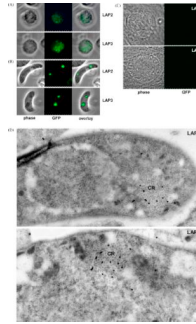
(GCGGCCGCTCTAGCATAGGATTAGAAATACAGTAATAGCAATTTTG); P7

(CATCTATACATGCAGGCG); P8

(GTGCCCATTAACATCACC); P9

(ACAAAGAATTCATGGTTGGTTCGCTAAACT); P10

(CCTCAAGATAGTTACGAATTTAAC).



**Fig. 2.** Expression and localization of GFP-tagged *PbLAP2* and *PbLAP3*. (A) Confocal images of live gametocytes. (B) Confocal images of live ookinetes. (C) Confocal images of mature oocysts containing sporozoites. (D) Immunogold EM images (with silver enhancement) of purified ookinetes, showing labelling of crystalloids (CR).