

LONDON
SCHOOL of
HYGIENE
& TROPICAL
MEDICINE



LSHTM Research Online

Ansell, KH; Jones, HM; Whalley, D; Hearn, A; Taylor, DL; Patin, EC; Chapman, TM; Osborne, SA; Wallace, C; Birchall, K; +7 more... Large, J; Bouloc, N; Smiljanic-Hurley, E; Clough, B; Moon, RW; Green, JL; Holder, AA; (2014) Biochemical and antiparasitic properties of inhibitors of the *Plasmodium falciparum* calcium-dependent protein kinase PfCDPK1. *Antimicrobial agents and chemotherapy*, 58 (10). pp. 6032-43. ISSN 0066-4804 DOI: <https://doi.org/10.1128/AAC.02959-14>

Downloaded from: <http://researchonline.lshtm.ac.uk/2545934/>

DOI: <https://doi.org/10.1128/AAC.02959-14>

Usage Guidelines:

Please refer to usage guidelines at <https://researchonline.lshtm.ac.uk/policies.html> or alternatively contact researchonline@lshtm.ac.uk.

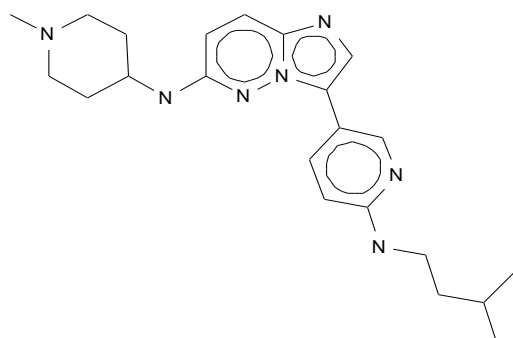
Available under license: <http://creativecommons.org/licenses/by/2.5/>

<https://researchonline.lshtm.ac.uk>

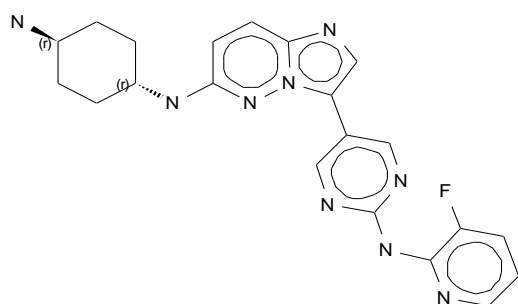
Table S1. Chemical Structures

Compound Series

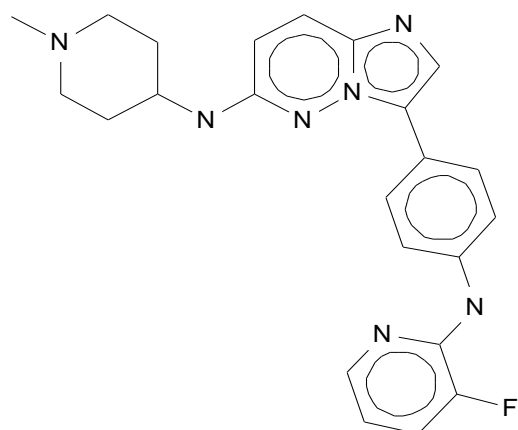
Structure



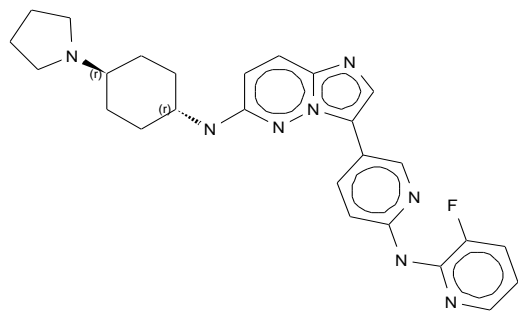
1 1



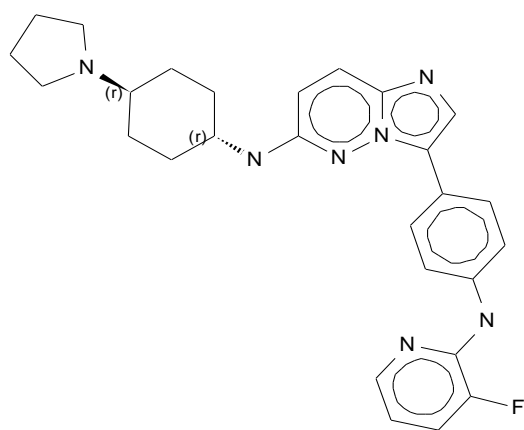
2 1



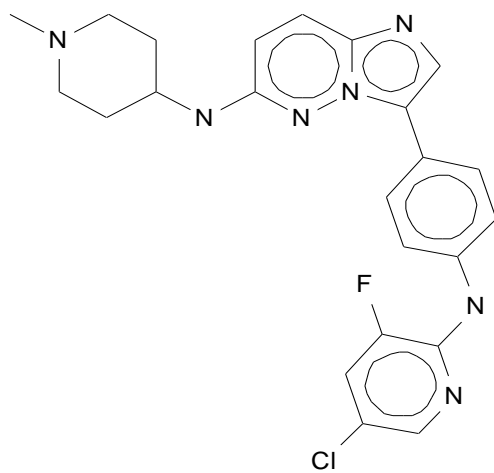
3 1



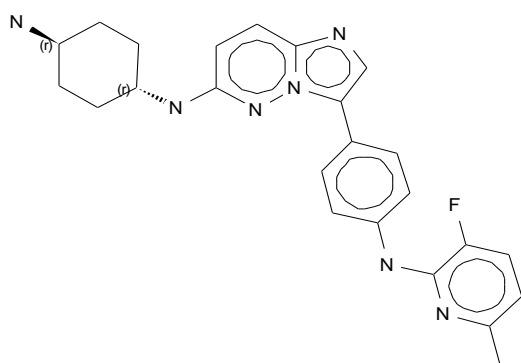
4 1



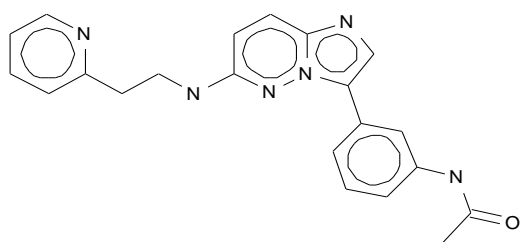
5 1



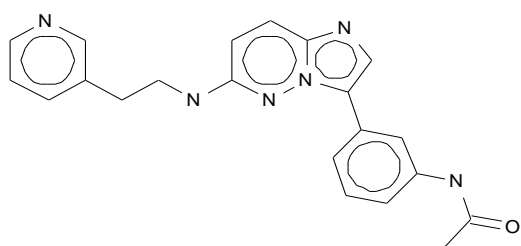
6 1



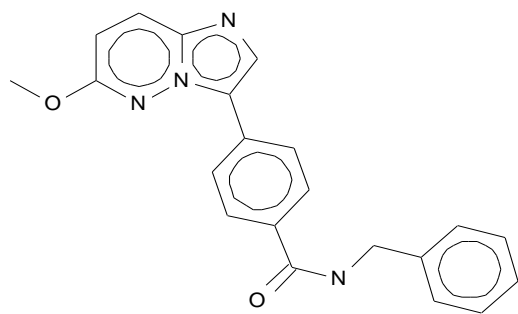
7 1



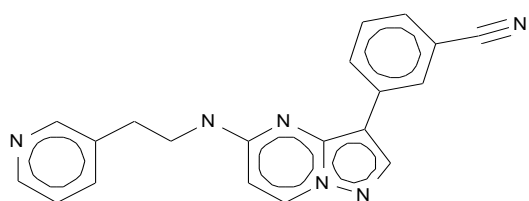
10 1



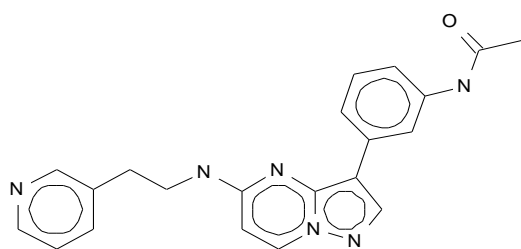
11 1



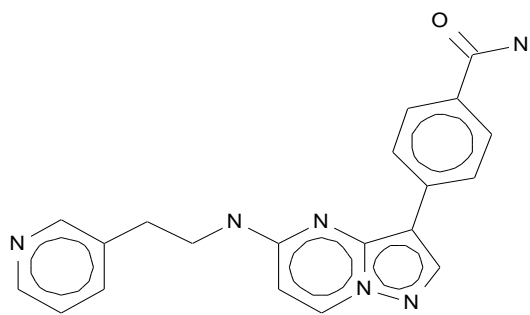
12 1



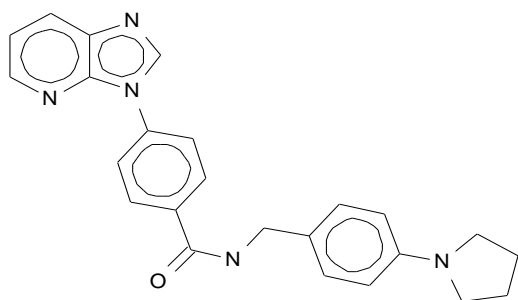
13 2



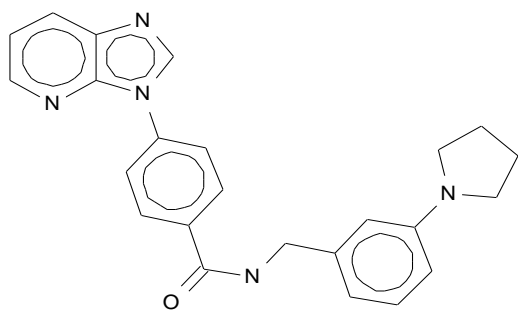
14 2



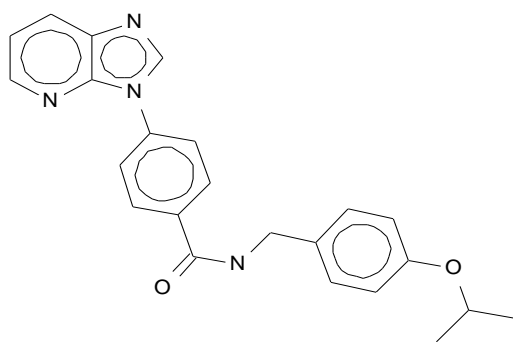
15 2



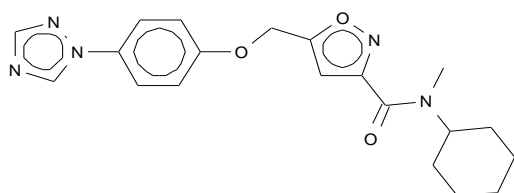
16 3



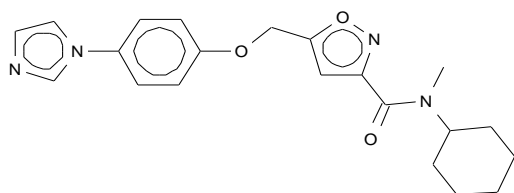
17 3



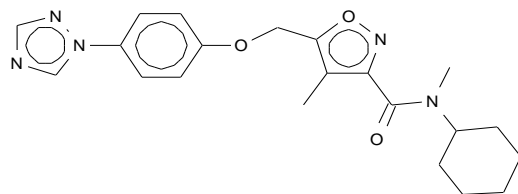
18 3



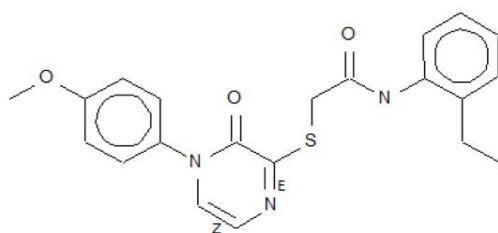
19 4



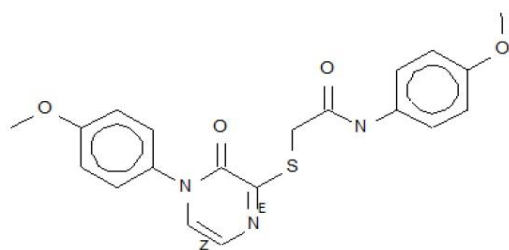
20 4



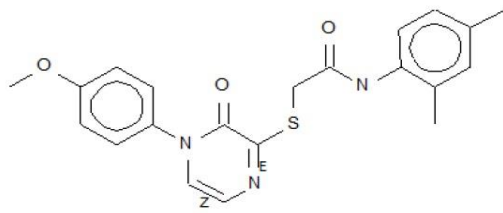
21 4



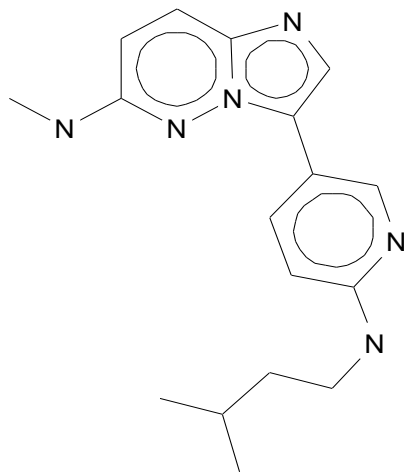
22 5



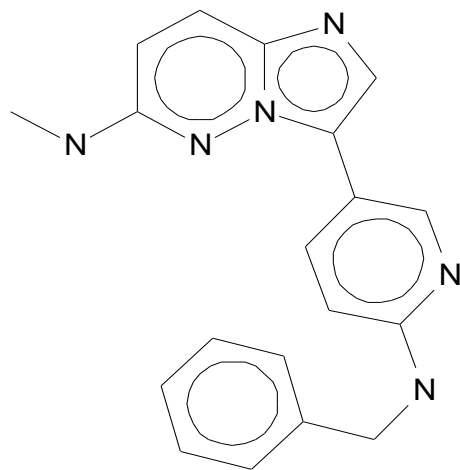
23 5



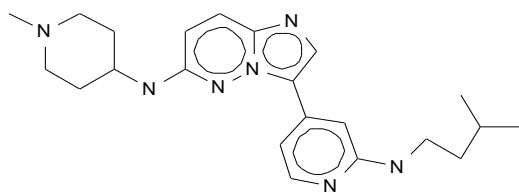
24 5



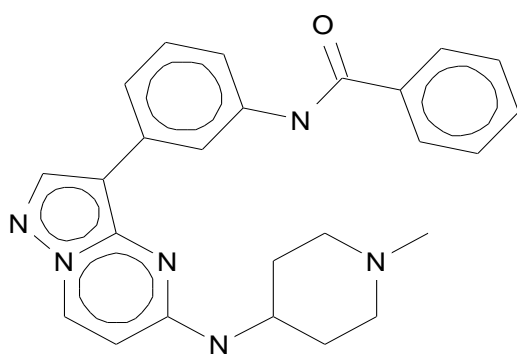
25 1



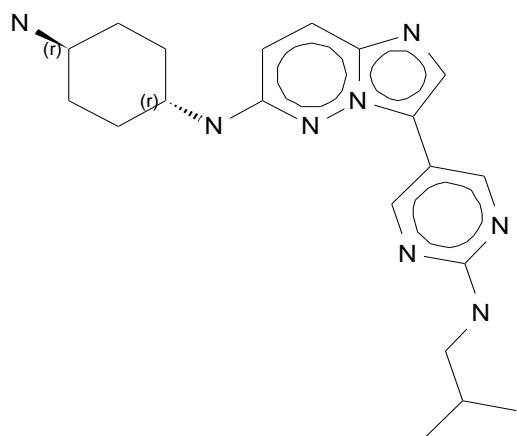
26 1



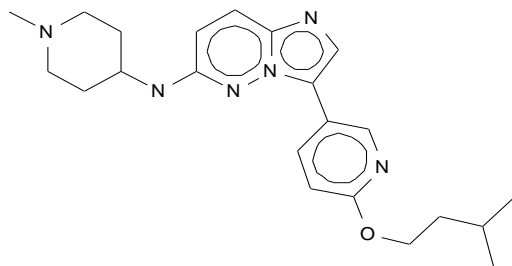
27 1



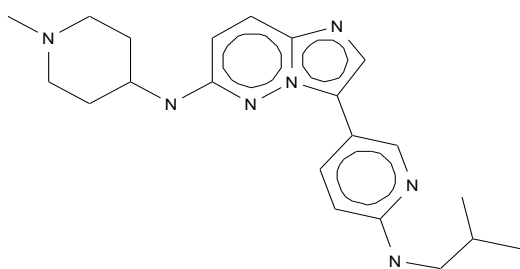
28 2



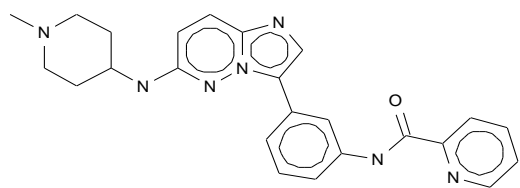
29 1



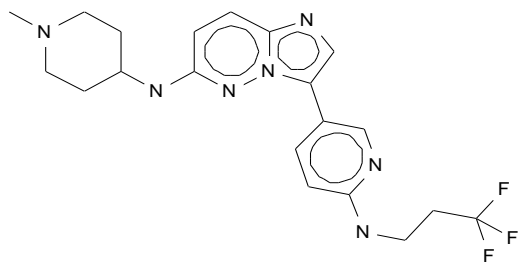
30 1



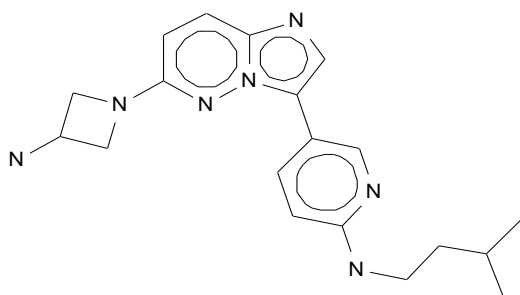
31 1



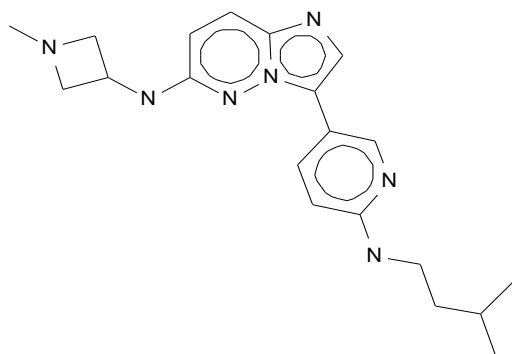
32 1



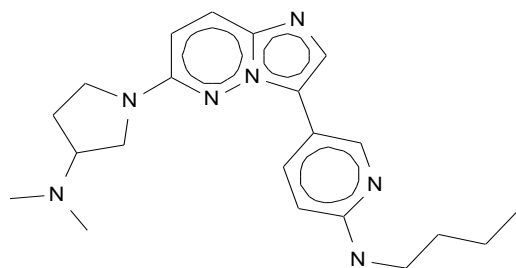
33 1



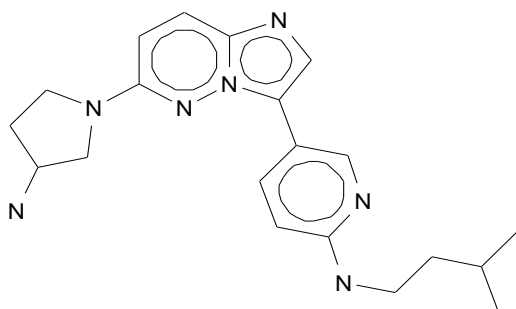
34 1



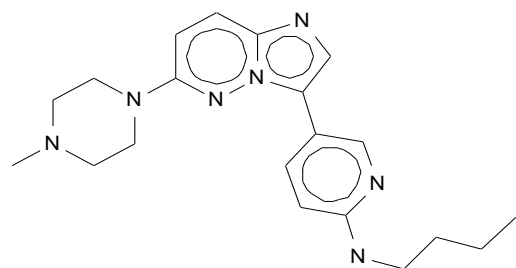
35 1



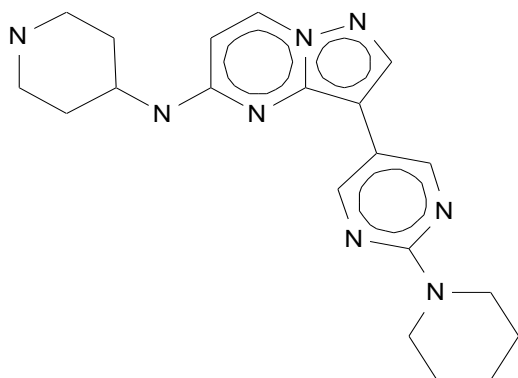
36 1



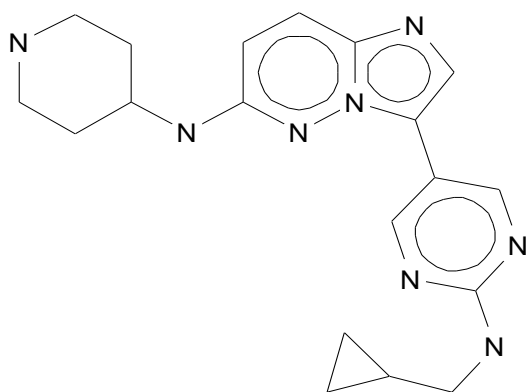
37 1



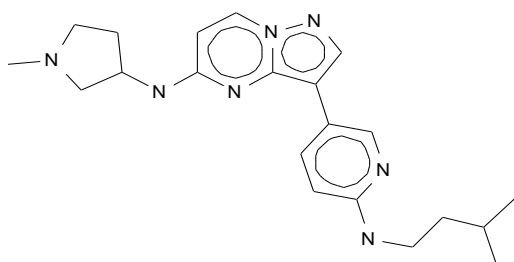
38 1



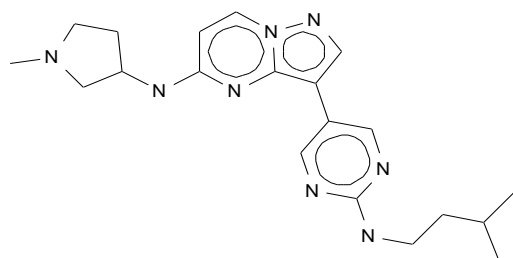
39 2



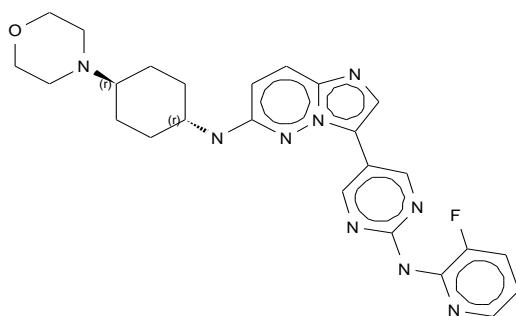
40 1



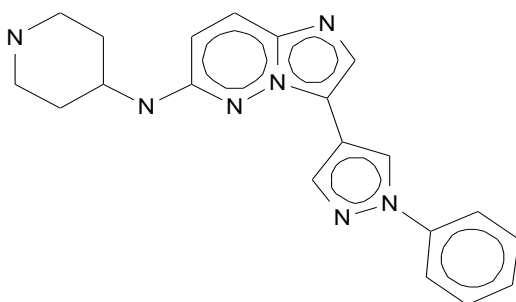
41 2



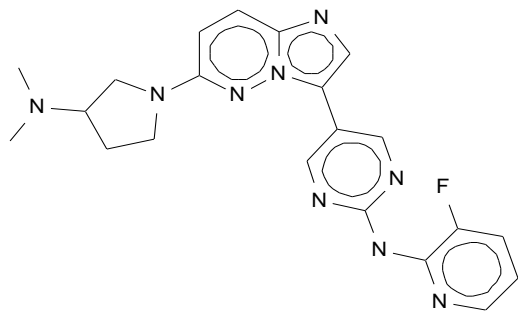
42 2



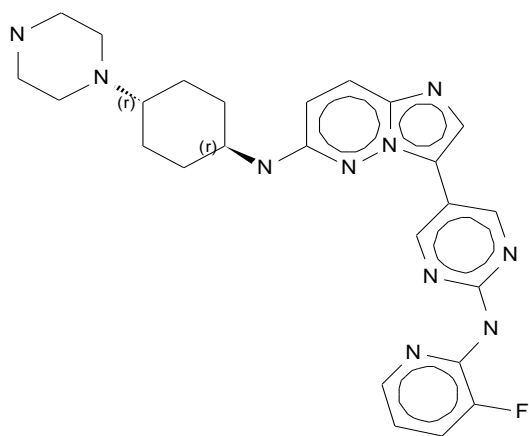
43 1



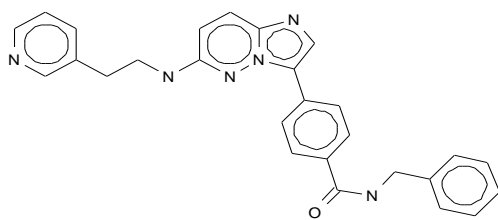
44 1



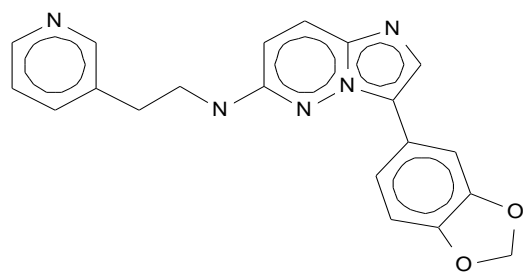
45 1



46 1



47 1



50 1