

LONDON
SCHOOL of
HYGIENE
& TROPICAL
MEDICINE



LSHTM Research Online

Low, AJ; Nagot, N; Weiss, HA; Konate, I; Kania, D; Segondy, M; Meda, N; van de Perre, P; Mayaud, P; Yerelon Study Group; +30 more... , COLLABORATORS; Bahemba, E; Berthé, A; Coulibaly, M; Defer, MC; Diallo, R; Djagbaré, D; Huet, C; Konaté, I; Ky-Dama, F; M'Boutiki, GT; Méda, N; Millogo, I; Nagot, N; Ouédraogo, A; Ouédraogo, D; Rouet, F; Sanon, A; Sawadogo, H; Vallo, R; Vergne, L; Mayaud, P; Weiss, HA; Nagot, N; Becquart, P; Foulongne, V; Segondy, M; Van de Perre, P; Andonaba, JB; Sawadogo, A; (2015) Herpes simplex virus type-2 (HSV-2) cervico-vaginal shedding among women living with HIV-1 on antiretroviral therapy in Burkina Faso: an 8-year longitudinal study. *The Journal of infectious diseases*, 213 (5). pp. 731-7. ISSN 0022-1899 DOI: <https://doi.org/10.1093/infdis/jiv495>

Downloaded from: <http://researchonline.lshtm.ac.uk/2331662/>

DOI: <https://doi.org/10.1093/infdis/jiv495>

Usage Guidelines:

Please refer to usage guidelines at <https://researchonline.lshtm.ac.uk/policies.html> or alternatively contact researchonline@lshtm.ac.uk.

Available under license: <http://creativecommons.org/licenses/by/2.5/>

<https://researchonline.lshtm.ac.uk>

Herpes Simplex Virus Type-2 Cervicovaginal Shedding Among Women Living With HIV-1 and Receiving Antiretroviral Therapy in Burkina Faso: An 8-Year Longitudinal Study

Andrea J. Low,¹ Nicolas Nagot,^{2,3} Helen A. Weiss,¹ Issouf Konate,⁴ Dramane Kania,⁴ Michel Segondy,^{2,3} Nicolas Meda,⁴ Philippe van de Perre,^{2,3} and Philippe Mayaud^{1,*}; for the Yerelon Study Group

¹London School of Hygiene and Tropical Medicine, United Kingdom; ²UMR 1058 University of Montpellier, ³Montpellier University Hospital, France; and ⁴Centre Muraz, Bobo-Dioulasso, Burkina Faso

Background. The impact of antiretroviral therapy (ART) on herpes simplex virus type-2 (HSV-2) replication is unclear. The aim of this study was to assess factors associated with cervicovaginal HSV-2 DNA shedding and genital ulcer disease (GUD) in a cohort of women living with human immunodeficiency virus type-1 (HIV-1) in Burkina Faso.

Methods. Participants were screened for cervicovaginal HSV-2 DNA, GUD, cervicovaginal and systemic HIV-1 RNA, and reproductive tract infections every 3–6 months over 8 years. Associations with HSV-2 shedding and quantity were examined using random-effects logistic and linear regression, respectively.

Results. Of the 236 women with data on HSV-2 shedding, 151 took ART during the study period. Cervicovaginal HSV-2 DNA was detected in 42% of women (99 of 236) in 8.2% of visits (151 of 1848). ART was associated with a reduction in the odds of HSV-2 shedding, which declined for each year of ART use (odds ratio [OR], 0.74; 95% confidence interval [CI], .59–.92). In the multivariable model, the impact of ART was primarily associated with suppression of systemic HIV-1 RNA (adjusted OR, 0.32; 95% CI, .15–.67). A reduction in the odds of GUD was also observed during ART, mainly in those with HIV-1 suppression (adjusted OR, 0.53; 95% CI, .25–1.11).

Conclusions. ART is strongly associated with a decrease in cervicovaginal HSV-2 shedding, and the impact was sustained over several years.

Keywords. antiretrovirals; HIV-1; herpes simplex virus type-2; HSV-2; female; genital tract; genital ulcer disease; Burkina Faso.

Herpes simplex virus type 2 (HSV-2) infection is one of the most common sexually transmitted infections, with the highest burden in Africa [1]. HSV-2 coinfection is associated with increased plasma and genital human immunodeficiency virus type 1 (HIV-1) loads [2, 3] and increased quantities of genital tract inflammatory cells [4, 5]. People living with HIV tend to have more-frequent HSV-2 clinical manifestations, with recurrent and persistent genital ulcerative disease (GUD) attributed to impaired immune responses [6, 7]. HIV coinfection has also been shown to increase genital shedding of HSV-2 [8] and the likelihood of transmission [9].

Antiretroviral therapy (ART) should reduce clinical and asymptomatic manifestations of HSV-2 infection, through

immune restoration. The impact of antiretroviral therapy (ART) on GUD and HSV-2 shedding has been described in multiple contexts, with varying results depending on sampling frequency [10, 11]. Both GUD and HSV-2 genital shedding can increase during the first 1–3 months of ART, particularly among women with low CD4⁺ T-cell counts at ART initiation, likely owing to immune reconstitution [12, 13]. The impact of ART on HSV-2 shedding beyond 6 months has not been described.

In this article, we present data on the short-term and long-term effects of ART on symptomatic HSV-2 genital shedding (defined as the presence of GUD) and asymptomatic HSV-2 genital shedding in a cohort of high-risk women living with HIV-1 in Burkina Faso.

METHODS

Participants were women living with HIV-1 and coinfecting with HSV-2 who were enrolled in the Yerelon cohort in Bobo-Dioulasso, Burkina Faso [14–16]. Combined ART has been available since 2004 for women with World Health Organization clinical stage 3/4 HIV disease or a CD4⁺ T-cell count of ≤ 200 cells/ μ L (or ≤ 350 cells/ μ L, beginning in 2009) [17]. First-line treatment for most participants was based on nonnucleoside

Received 22 July 2015; accepted 6 October 2015; published online 15 October 2015.

*Members of the study group are listed at the end of the text.

Correspondence: A. J. Low, London School of Hygiene and Tropical Medicine, Keppel Street, London WC1E 7HT, UK (andrea_low@hotmail.com).

The Journal of Infectious Diseases® 2016;213:731–7

© The Author 2015. Published by Oxford University Press for the Infectious Diseases Society of America. This is an Open Access article distributed under the terms of the Creative Commons Attribution License (<http://creativecommons.org/licenses/by/4.0/>), which permits unrestricted reuse, distribution, and reproduction in any medium, provided the original work is properly cited. DOI: 10.1093/infdis/jiv495

reverse transcriptase inhibitors. Participants were followed approximately every 3–6 months. A subset of women were enrolled in a randomized trial of valacyclovir to suppress HIV-1 genital shedding, with fortnightly visits over a 12-week period in 2004–2005 [18, 19]. All visits corresponding to regular cohort visits were included in this analysis, excluding those with valacyclovir use.

At each visit, a clinician performed a gynecological examination; recorded whether GUD was present, based on detection of vesicles or ulcers; and collected genital samples. Enriched cervicovaginal lavage (eCVL) was performed by infusing 2 mL of normal saline into the vagina for 60 seconds and collecting it into a cryotube. A swab was rotated 360 degrees in the cervical os and placed into the same cryotube [20]. Women with symptoms of reproductive tract infections were treated according to national syndromic management guidelines, which did not include acyclovir during the study period. Visits were deferred during menses.

The research protocol was approved by the institutional review boards at the London School of Hygiene and Tropical Medicine and Centre Muraz and the research ethics committee at the Burkina Faso Ministry of Health. All women provided written informed consent.

HSV-2 serology was assessed using the Kalon IgG2-ELISA kit (Kalon Biologicals). HIV-1 RNA in plasma and eCVL specimens was detected and quantified using real-time polymerase chain reaction (PCR) analysis (Generic HIV Viral Load; Biocentric) [21]. HSV-2 DNA was extracted from 200 μ L of eCVL fluid by using the QIAamp DNA mini kit (Qiagen) and was eluted in 100 μ L of buffer. HSV-2 DNA was amplified from 5 μ L of eluate by TaqMan real-time PCR analysis, using the ABI Prism 7000 Sequence Detection Systems, and was quantified using the HSV-2 Quantitated External Control (Tebu-Bio) [22]. The lower limit of detection was 300 copies/mL (2.50 \log_{10} copies/mL).

Cervical swabs were tested for *Neisseria gonorrhoeae* and *Chlamydia trachomatis*, using PCR (Amplicor CT/NG PCR assay; Roche); testing was restricted to swabs dating from 2007 onward, owing to the potential for DNA degradation [23]. Vaginal smears were examined using wet-mount microscopy. Bacterial vaginosis was diagnosed on the basis of the Nugent score assigned to heat-fixed vaginal smears. The presence of sperm was detected using qualitative PCR to detect the Y chromosome [24].

The frequency of GUD and HSV-2 shedding and the quantity of HSV-2 DNA were assessed after stratification by ART status and ART duration. HIV-1 RNA and HSV-2 DNA loads in plasma and eCVL specimens were transformed to \log_{10} copies/mL. Viral suppression was defined as achieving an undetectable HIV-1 RNA load in plasma (defined as a plasma viral load of $< 2.50 \log_{10}$ copies/mL) within the first 12 months of ART, and immune reconstitution was defined as a CD4⁺ T-cell count increase of ≥ 100 cells/ μ L by 12 months after ART initiation [25]; data collected 18 months after ART initiation were evaluated if data collected at 12 months were missing. Logistic

regression was used to estimate odds ratios (ORs) associated with (1) detectable shedding and (2) GUD, adjusting for within-woman correlation by using random-effects models. Multivariable logistic regression models were constructed using a hierarchical framework and included factors known to be associated with either GUD or detectable cervicovaginal HSV-2, namely age group [10, 26] and immune reconstitution [27, 28], or to be independently associated with GUD or HSV-2 DNA in univariable analysis, with a *P* value of $< .10$. Immune reconstitution and viral suppression were preferentially included in the final model owing to missing values for concurrent CD4⁺ T-cell counts and plasma viral load.

For the quantitative analyses, visits with undetectable HIV-1 or HSV-2 were assigned half the threshold value [18]. Random-effects linear regression was used to assess factors associated with the quantity of cervicovaginal HSV-2 DNA, restricted to visits with detectable HSV-2. A multiple linear regression model was constructed in the same fashion as the logistic model. Statistical analyses were performed using Stata, version 12.0 (StataCorp).

RESULTS

Between 2003 and 2011, 317 women seropositive for HIV-1 and HSV-2 were enrolled, of whom 236 had data collected on cervicovaginal HSV-2, and 81 did not have any stored samples. The characteristics of women with shedding data are shown in [Supplementary Table 1](#). The median age at cohort enrollment was 32 years (interquartile range [IQR], 18–48 years); 14% [33 of 236] were receiving ART at their first visit during which HSV-2 DNA was measured, 54% (128 of 236) initiated ART during the study period, and 4% (10 of 236) did not have any HSV-2 DNA measured after starting ART. The median CD4⁺ T-cell count was 357 cells/ μ L (IQR, 196–564 cells/ μ L) at the first visit with HSV-2 DNA sampling and 177 cells/ μ L (IQR, 116–233 cells/ μ L) at ART initiation. The most common ART regimen was zidovudine/lamivudine/efavirenz (42%); 85% (130 of 151) achieved plasma HIV-1 suppression by 12 months of treatment, and 69% (104 of 151) achieved immune reconstitution.

Shedding was measured during 1896 cohort visits, with 1308 occurring during ART. There was a median of 11 visits (IQR, 1–16 visits) per woman during ART and 6 visits (IQR, 1–16 visits) per woman before ART initiation. The median follow-up time was 1.2 years (IQR, 0.2–1.7 years) before ART initiation and 6.2 years (IQR, 5.0–6.6 years) during ART; 48 visits at which women received valacyclovir were excluded from analyses.

HSV-2 DNA was detected at least once in eCVL samples from 42% of women (99 of 236) at 8.2% of cohort visits (151 of 1848), with GUD detected concomitantly in 15% of shedding episodes (22 of 151). Of women with a measurement while not receiving ART, 33% (67 of 203) had detectable HSV-2 DNA at 15% of visits (84 of 551), and 32% (48 of 151) had detectable HSV-2 DNA at 5% of visits (67 of 1297; *P* $< .001$) after ART initiation (Table 1). The highest proportion of visits with shedding

Table 1. Variables Associated With the Presence of Cervicovaginal Herpes Simplex Virus Type 2 (HSV-2) DNA and Genital Ulcer Disease (GUD) Among Women Living With Human Immunodeficiency Virus Type 1 (HIV-1) in Burkina Faso

Characteristic	HSV-2 DNA Presence								GUD Presence					
	Visits, Proportion (%) (n = 1848) ^a	OR (95% CI) ^b			Regression Coefficient ^c (95% CI)				Visits, Proportion (%) (n = 2809) ^a	OR (95% CI) ^b				
		Unadjusted	P Value	Adjusted	P Value	Unadjusted	P Value	Adjusted		P Value	Unadjusted	P Value	Adjusted	P Value
Age, y^d														
18–24	25/204 (12.3)	1.0		1.0		0		0		35/443 (7.9)	1.0		1.0	
25–34	78/874 (8.9)	0.58 (.28–1.18)		0.81 (.33–2.02)		0.09 (–.44 to .62)		0.38 (–.21 to .98)		70/1316 (5.3)	0.67 (.37–1.20)		0.53 (.23–1.22)	
≥35	48/767 (6.3)	0.39 (.19–.83)	.05	0.61 (.23–1.56)	.42	–0.16 (–.73 to .42)	.52	0.22 (–.42 to .86)	.44	69/1036 (6.7)	0.93 (.52–1.69)	.25	0.82 (.36–1.87)	.21
ART influence^e														
ART status														
Naive	84/551 (15.3)	1.0		1.0		0		0		82/1176 (7.0)	1.0		1.0	
Initiated	67/1297 (5.2)	0.26 (.17–.39)	.001	0.34 (.20–.60)	.001	–0.51 (–.88 to –.14)	.007	–0.02 (–.57 to .53)	.94	93/1633 (5.7)	0.72 (.51–1.03)	.07	1.13 (.62–2.04)	.69
CD4 ⁺ T-cell count (per 100 cells/ μ L increase)	...	0.70 (.61–.81)	.001	...		0.04 (–.09 to .17)	.57	0.79 (.70–.89)	.001	0.86 (.74–1.01)	.06
Plasma HIV-1 RNA load (per log ₁₀ copies/mL increase)	...	1.70 (1.41–2.05)	.001	...		0.25 (.07–.42)	.005	0.13 (–.12 to .38)	.31	...	1.49 (1.23–1.79)	.001	...	
Immune reconstitution^f														
No	51/502 (10.1)	1.0		1.0		0		...		60/772 (7.8)	1.0		...	
Yes	62/1111 (5.6)	0.54 (.31–.94)	.03	0.68 (.37–1.26)	.22	0.04 (–.39 to .47)	.22	...		93/1517 (6.1)	0.79 (.49–1.27)	.33	...	
Viral suppression^g														
No	29/184 (15.8)	1.0		1.0		0		...		31/269 (11.5)	1.0		1.0	
Yes	78/1374 (5.7)	0.31 (.16–.62)	.001	0.32 (.15–.67)	.003	0.19 (–.31 to .70)	.45	...		117/1880 (6.2)	0.45 (.24–.83)	.01	0.53 (.25–1.11)	.09
Mucosal factor^e														
Abnormal vaginal discharge														
No	89/1421 (6.3)	1.0		1.0		0		...		113/2154 (5.3)	1.0		1.0	
Yes	62/410 (15.1)	2.96 (2.00–4.38)	.001	2.86 (1.75–4.68)	.001	0.07 (–.31 to .46)	.71	...		62/655 (9.5)	1.99 (1.40–2.83)	.001	1.63 (.99–2.69)	.05
Bacterial vaginosis														
No	84/1198 (7.0)	1.0		...		0		...		92/1771 (5.2)	1.0		1.0	
Yes	59/580 (10.2)	1.38 (.94–2.04)	.10	...		–0.12 (–.52 to .28)	.57	...		74/927 (8.0)	1.60 (1.14–2.26)	.007	1.31 (.84–2.05)	.23
GUD														
No	129/1722 (7.5)	1.0		1.0		0		
Yes	22/108 (20.4)	3.22 (1.80–5.76)	.001	2.62 (1.28–5.38)	.008	–0.40 (–.94 to .13)	.14	

Table 1 continued.

Characteristic	HSV-2 DNA Presence						GUD Presence						
	Visits, Proportion (%) (n = 1848) ^a			Regression Coefficient ^c (95% CI)			Visits, Proportion (%) (n = 2809) ^a			OR (95% CI) ^b			
	Unadjusted	Adjusted	P Value	Unadjusted	Adjusted	P Value	Unadjusted	Adjusted	P Value	Unadjusted	Adjusted	P Value	
eCVL HIV-1 RNA													
No	82/1174 (7.0)	1.0		0	0		68/1399 (4.9)	1.0		1.0			
Yes	63/573 (11.0)	1.57 (1.06–2.33)	.02	0.82 (.48–1.38)	.45	.009	58/677 (8.6)	1.73 (1.16–2.58)	.008	1.52 (.93–2.48)	.09		

There was no association between the presence of HSV-2 DNA, the quantity of HSV-2 DNA detected, or the presence of GUD and the presence of a hemorrhagic sample, the presence of semen, ART regimen, or the presence of other reproductive tract infections.

Abbreviations: ART, antiretroviral therapy; CI, confidence interval; eCVL, enriched cervicovaginal lavage; OR, odds ratio.

^a Data denote no. of visits during which HSV-2 DNA or GUD was detected/total no. of visits. Denominators vary, owing to missing data.

^b ORs were calculated using random-effects logistic regression, and P values were determined by likelihood ratio tests.

^c Data are for visits during which HSV-2 DNA was detected. Regression coefficients were calculated using random-effects linear regression, and P values were determined by the Wald test.

^d Age was determined at cohort enrollment.

^e ART status and data on mucosal factors are concurrent to the cervicovaginal sample collection visit.

^f Immune reconstitution is defined as an increase in CD4⁺ T-cell count of ≥ 100 cells/ μ L 12–18 months after ART initiation. Data were available for 151 women receiving ART.

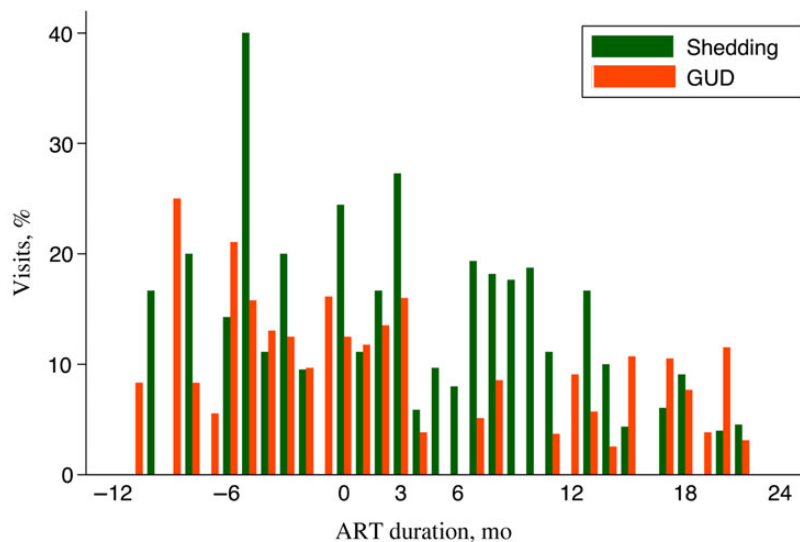
^g Viral suppression is defined as a viral load of < 300 copies/mL within the first 12–18 months after ART initiation. Data were available for 144 women receiving ART.

occurred during the last 6 months preceding ART (17% [19 of 110]; Figure 1) and the first 3 months of ART (18% [7 of 38]), and the proportion significantly dropped after 12 months of ART (3% [36 of 1057]; $P_{\text{trend}} < .001$). The proportion of visits during which GUD was detected also increased and decreased, during the same periods.

Across all visits, concurrent CD4⁺ T-cell counts were associated with a 30% decrease in HSV-2 DNA detected per 100 cells/ μ L increase (OR, 0.70; 95% CI, .61–.81), whereas concurrent plasma HIV-1 loads were associated with a 70% increase per log₁₀ copies/mL increase (OR, 1.70; 95% CI, 1.41–2.05). ART use was associated with a substantial reduction in HSV-2 shedding (OR, 0.26; 95% CI, .17–.39). There was a 25% decrease in the odds of shedding per year of ART after the first 12 months (OR, 0.74; 95% CI, .59–.92). In the multivariable model, HIV suppression was associated with a reduced odds of HSV-2 shedding (adjusted OR, 0.32; 95% CI, .15–.67; Table 1). Shedding episodes decreased with age in the univariable analysis, although this relationship was less pronounced after adjustment for ART (older women being more likely to be receiving ART).

During visits with HSV-2 shedding, the mean quantity of HSV-2 DNA was 4.47 log₁₀ copies/mL (95% CI, 4.20–4.73; n = 84) in ART-naive participants and 3.96 log₁₀ copies/mL (95% CI, 3.70–4.22; n = 67) after ART initiation (regression coefficient, –0.51; 95% CI, –.88 to –.14; $P = .007$; Table 1). Concurrent plasma HIV-1 loads were strongly associated with an increase in the amount of HSV-2 DNA shed (regression coefficient, 0.25 per log₁₀ increase in PVL; 95% CI, .07–.42). In the multivariable model, there was weak evidence that concurrent HIV-1 shedding was predictive of an increased quantity of HSV-2 DNA (adjusted regression coefficient, 0.39; 95% CI, –.11 to .89).

There were 317 women with clinical data on GUD during the study period. GUD was present in 22% of women (65 of 292) with data prior to ART initiation and in 32% (92 of 192) with data after ART initiation; among visits, 7.0% (82 of 1176) before ART initiation and 5.7% (93 of 1633) after initiation revealed GUD ($P = .17$). There were concurrent vesicles at 43% of visits (23 of 124) with ulcers. HSV-2 DNA was detected at 20% of visits (22 of 108) with GUD present and 7.5% of visits (129 of 1722) without GUD present ($P < .001$). Overall, there was a decrease in frequency of GUD episodes with an increase in concurrent CD4⁺ T-cell count (OR, 0.79; 95% CI, .70–.89 per 100 cells/ μ L increase) and an increase with increasing plasma viral load (OR, 1.49; 95% CI, 1.23–1.79 per log₁₀ copies/mL increase). There was an increase in the odds of GUD during the first 3 months of ART (OR, 2.00; 95% CI, .96–4.20) but an overall reduction in the odds of GUD during ART (OR, 0.72; 95% CI, .51–1.03). In the multivariable model, there was weak evidence that GUD was inversely associated with HIV-1 suppression (adjusted OR, 0.53; 95% CI, .25–1.11) and with increasing CD4⁺ T-cell count (adjusted OR, 0.86; 95% CI, .74–1.01).



Variable	Value					
Time relative to enrollment, mo	-6 and earlier	-6 to 0	0-3	3-6	6-12	>12
Women with shedding data, no.	80	97	38	71	99	132
Visits with shedding detected, proportion (%)	28/222 (13)	19/110 (17)	7/38 (18)	6/73 (8)	18/129 (14)	36/1057 (3)
Women with GUD data, no.	113	153	79	99	134	151
Visits with GUD detected, proportion (%) ^a	34/502 (7)	27/208 (13)	11/79 (14)	1/102 (1)	9/184 (5)	72/1268 (6)
GUD detection among visits with shedding detected, proportion (%) ^a	3/28 (11)	5/19 (26)	3/7 (43)	0/6 (0)	1/18 (6)	4/36 (11)

^aGUD episodes were detected during 16% of visits (6 of 37) with shedding detected among women who did not initiate ART.

Data are no. of visits during which HSV-2 shedding was detected/no. of visits HSV-2 shedding was measured, and the proportion (%).

Figure 1. Frequency of genital herpes simplex virus type 2 (HSV-2) shedding and genital ulcer disease (GUD) among human immunodeficiency virus (HIV)-positive high-risk women before and after antiretroviral therapy (ART) initiation.

DISCUSSION

We describe the impact of ART on cervicovaginal HSV-2 and GUD presence over several years. The frequencies of HSV-2 shedding and GUD increased in the 6 months prior to ART initiation, were sustained at that level for the first 3 months of ART, and decreased thereafter. This differs from findings from a study in Uganda, where there was a rise in the frequencies of HSV-2 shedding and GUD during the first 3 months of treatment [13]. In our study, the most substantial decrease in shedding was seen after 12 months of ART, although we were limited by the small number of samples in the first 3 months. The effect of ART was associated with HIV-1 suppression and immune reconstitution, although the magnitude of the effect was larger for viral suppression. This further supports the synergistic interactions between HIV-1 and HSV-2 replication, where systemic HIV-1 replication might drive HSV-2 replication in the sacral ganglia, compounded by weak immune

control [29–31]. This reduction was maintained over time and was independent of age; therefore, it is less likely to be due only to the natural history of HSV-2 [9]. Among women who shed, HSV-2 DNA quantities were correlated with quantities of genital HIV-1 RNA, providing additional proof of local direct viral interactions [32].

The effect of ART on GUD appears to be driven by systemic HIV-1 suppression, although there was a decrease in the frequency of GUD among women with higher CD4⁺ T-cell counts and a trend toward a reduction in the odds of GUD among women with immune reconstitution during ART. The slightly different dynamics for the effect of ART on GUD, compared with HSV-2 shedding, suggest that the clinical benefits might wane over time.

This is one of the first studies to demonstrate prolonged suppression of HSV-2 shedding during ART; other studies have shown no change in shedding during ART but reductions in GUD [33, 34]. The variations in results are likely due to smaller

sample sizes and variable duration of follow-up, particularly if studies are limited to early periods after ART initiation.

There are limitations to this study. The frequency of sampling was every 3–6 months, and therefore clinical and asymptomatic episodes of HSV-2 activation might have been missed. GUD was assumed to be caused mainly by HSV-2 in this population, based on studies from the region [35, 36]. Our prior study in this population showed that 52% of GUD cases harbored lesional HSV-2 DNA [7]. Although we only detected HSV-2 DNA at 20% of visits with concurrent GUD, this is consistent with other studies that used more sensitive methods [10, 37].

In conclusion, ART has a significant influence on HSV-2 shedding and GUD episodes, primarily associated with HIV-1 suppression. Following ART initiation, HSV-2 shedding is rapidly suppressed, and the influence of ART is sustained over time.

STUDY GROUP MEMBERS

Members of the Yérelon study group are as follows: Eloi Bahemba, Abdramane Berthé, Minata Coulibaly, Marie-Christine Defer, Ramata Diallo, Didier Djagbaré, Charlotte Huet, Issouf Konaté, Florent Ky-Dama, Gilles T. M'Boutiki, Nicolas Méda, Inès Millogo, Nicolas Nagot, Abdoulaye Ouédraogo, Djénéba Ouédraogo, Francois Rouet, Anselme Sanon, Haoua Sawadogo, Roselyne Vallo, and Laurence Vergne (deceased January 2007; Centre Muraz, Bobo-Dioulasso, Burkina Faso); Philippe Mayaud and Helen A. Weiss (London School of Hygiene and Tropical Medicine, United Kingdom); Nicolas Nagot, Pierre Becquart, Vincent Foulongne, Michel Segondy, and Philippe Van de Perre, (Université Montpellier 1 and CHU Montpellier, France); and Jean-Baptiste Andonaba and Adrien Sawadogo (University Hospital of Bobo-Dioulasso, Burkina Faso).

Supplementary Data

Supplementary materials are available at <http://jid.oxfordjournals.org>. Consisting of data provided by the author to benefit the reader, the posted materials are not copyedited and are the sole responsibility of the author, so questions or comments should be addressed to the author.

Notes

Acknowledgments. We thank the women and the organizations of persons living with HIV/AIDS (Yérelon, Espoir et Vie, Centre Solidarité Action Sociale, and Espoir pour Demain) who participated in this study; staff at Service d'Hygiène, Bobo-Dioulasso, Burkina Faso; and Dr Vincent Foulongne (Université de Montpellier) and Antoinette Kabore and Diane Valea (Centre Muraz), for their important assistance with the laboratory testing.

Financial support. This work was supported by the French Agence Nationale de Recherches sur le SIDA et les Hépatites (grant ANRS1222), the Wellcome Trust (grant ITCRB85), and through the United Kingdom's Department for International Development-funded Knowledge Programme on HIV/AIDS and STI and the Research Programme Consortium on Research and Capacity Building in Sexual and Reproductive Health and HIV in Developing Countries (grant DFID RPC HD3).

Potential conflicts of interest. All authors: No reported conflicts. All authors have submitted the ICMJE Form for Disclosure of Potential Conflicts of Interest. Conflicts that the editors consider relevant to the content of the manuscript have been disclosed.

References

1. Looker KJ, Magaret AS, Turner KM, Vickerman P, Gottlieb SL, Newman LM. Global estimates of prevalent and incident herpes simplex virus type 2 infections in 2012. *PLoS One* **2015**; *10*:e114989.
2. McClelland RS, Wang CC, Overbaugh J, et al. Association between cervical shedding of herpes simplex virus and HIV-1. *AIDS* **2002**; *16*:2425–30.
3. Tanton C, Weiss HA, Le Goff J, et al. Correlates of HIV-1 genital shedding in Tanzanian women. *PLoS One* **2011**; *6*:e17480.
4. Ferreira VH, Nazli A, Mossman KL, Kaushic C. Proinflammatory cytokines and chemokines - but not interferon-beta - produced in response to HSV-2 in primary human genital epithelial cells are associated with viral replication and the presence of the virion host shutoff protein. *Am J Reprod Immunol* **2013**; *70*:199–212.
5. Johnston C, Zhu J, Jing L, et al. Virologic and immunologic evidence of multifocal genital herpes simplex virus 2 infection. *J Virol* **2014**; *88*:4921–31.
6. Posavad CM, Koelle DM, Shaughnessy MF, Corey L. Severe genital herpes infections in HIV-infected individuals with impaired herpes simplex virus-specific CD8+ cytotoxic T lymphocyte responses. *Proc Natl Acad Sci U S A* **1997**; *94*:10289–94.
7. Nagot N, Ouedraogo A, Konate I, et al. Roles of clinical and subclinical reactivated herpes simplex virus type 2 infection and human immunodeficiency virus type 1 (HIV-1)-induced immunosuppression on genital and plasma HIV-1 levels. *J Infect Dis* **2008**; *198*:241–9.
8. Augenbraun M, Feldman J, Chirgwin K, et al. Increased genital shedding of herpes simplex virus type 2 in HIV-seropositive women. *Ann Intern Med* **1995**; *123*: 845–7.
9. Tronstein E, Johnston C, Huang ML, et al. Genital shedding of herpes simplex virus among symptomatic and asymptomatic persons with HSV-2 infection. *JAMA* **2011**; *305*:1441–9.
10. Wald A, Zeh J, Selke S, Ashley RL, Corey L. Virologic characteristics of subclinical and symptomatic genital herpes infections. *N Engl J Med* **1995**; *333*:770–5.
11. Mark KE, Wald A, Magaret AS, et al. Rapidly cleared episodes of herpes simplex virus reactivation in immunocompetent adults. *J Infect Dis* **2008**; *198*:1141–9.
12. Graham SM, Masese L, Gitau R, et al. Increased risk of genital ulcer disease in women during the first month after initiating antiretroviral therapy. *J Acquir Immune Defic Syndr* **2009**; *52*:600–3.
13. Tobian AA, Grabowski MK, Serwadda D, et al. Reactivation of herpes simplex virus type 2 after initiation of antiretroviral therapy. *J Infect Dis* **2013**; *208*:839–46.
14. Nagot N, Ouangre A, Ouedraogo A, et al. Spectrum of commercial sex activity in Burkina Faso: classification model and risk of exposure to HIV. *J Acquir Immune Defic Syndr* **2002**; *29*:517–21.
15. Low AJ, Clayton T, Konate I, et al. Genital warts and infection with human immunodeficiency virus in high-risk women in Burkina Faso: a longitudinal study. *BMC Infect Dis* **2011**; *11*:20.
16. Huet C, Ouedraogo A, Konate I, et al. Long term virological, immunological and mortality outcomes in a cohort of HIV-infected female sex workers treated with highly active antiretroviral therapy in Africa. *BMC Public Health* **2011**; *11*:700.
17. Interim WHO Antiretroviral Treatment Working Group, Department of HIV/AIDS, World Health Organization (WHO). Scaling up antiretroviral therapy in resource-limited settings guidelines for a public health approach. Geneva: World Health Organization, **2002**.
18. Nagot N, Ouedraogo A, Foulongne V, et al. Reduction of HIV-1 RNA levels with therapy to suppress herpes simplex virus. *N Engl J Med* **2007**; *356*:790–9.
19. Ouedraogo A, Nagot N, Vergne L, et al. Impact of suppressive herpes therapy on genital HIV-1 RNA among women taking antiretroviral therapy: a randomized controlled trial. *AIDS* **2006**; *20*:2305–13.
20. Nagot N, Foulongne V, Becquart P, et al. Longitudinal assessment of HIV-1 and HSV-2 shedding in the genital tract of West African women. *J Acquir Immune Defic Syndr* **2005**; *39*:632–4.
21. Rouet F, Foulongne V, Viljoen J, et al. Comparison of the Generic HIV Viral Load assay with the Amplicor HIV-1 monitor v1.5 and Nuclisens HIV-1 EasyQ v1.2 techniques for plasma HIV-1 RNA quantification of non-B subtypes: the Kesho Bora preparatory study. *J Virol Methods* **2010**; *163*:253–7.
22. Burrows J, Nitsche A, Bayly B, Walker E, Higgins G, Kok T. Detection and subtyping of Herpes simplex virus in clinical samples by LightCycler PCR, enzyme immunoassay and cell culture. *BMC Microbiol* **2002**; *2*:12.
23. Low AJ, Konate I, Nagot N, et al. Neisseria gonorrhoeae and Chlamydia trachomatis infection in HIV-1-infected women taking antiretroviral therapy: a prospective cohort study from Burkina Faso. *Sex Transm Infect* **2014**; *90*:100–3.
24. Chomont N, Gresenguet G, Levy M, et al. Detection of Y chromosome DNA as evidence of semen in cervicovaginal secretions of sexually active women. *Clin Diagn Lab Immunol* **2001**; *8*:955–8.
25. Panel on Antiretroviral Guidelines for Adults and Adolescents, Department of Health and Human Services. Guidelines for the use of antiretroviral agents in

- HIV-1-infected adults and adolescents, 2015. <http://aidsinfo.nih.gov/contentfiles/lvguidelines/adultandadolescentgl.pdf>. Accessed 20 July 2015.
26. Aumakhan B, Gange SJ, Beyrer C, et al. Quantitative and qualitative correlates of cervicovaginal herpes simplex virus type 2 shedding among HIV-infected women in the Women's Interagency HIV Study. *Int J STD AIDS* **2011**; 22:273–7.
 27. Ramaswamy M, Waters A, Smith C, et al. Reconstitution of herpes simplex virus-specific T cell immunity in HIV-infected patients receiving highly active antiretroviral therapy. *J Infect Dis* **2007**; 195:410–5.
 28. Bagdades EK, Pillay D, Squire SB, O'Neil C, Johnson MA, Griffiths PD. Relationship between herpes simplex virus ulceration and CD4+ cell counts in patients with HIV infection. *AIDS* **1992**; 6:1317–20.
 29. Van de Perre P, Segondy M, Foulongne V, et al. Herpes simplex virus and HIV-1: deciphering viral synergy. *Lancet Infect Dis* **2008**; 8:490–7.
 30. Rebbapragada A, Wachihi C, Pettengell C, et al. Negative mucosal synergy between Herpes simplex type 2 and HIV in the female genital tract. *AIDS* **2007**; 21:589–98.
 31. Sheth PM, Sunderji S, Shin LY, et al. Coinfection with herpes simplex virus type 2 is associated with reduced HIV-specific T cell responses and systemic immune activation. *J Infect Dis* **2008**; 197:1394–401.
 32. Low AJ, Konate I, Nagot N, et al. Cervicovaginal HIV-1 shedding in women taking antiretroviral therapy in Burkina Faso: a longitudinal study. *J Acquir Immune Defic Syndr* **2014**; 65:237–45.
 33. Posavad CM, Wald A, Kuntz S, et al. Frequent reactivation of herpes simplex virus among HIV-1-infected patients treated with highly active antiretroviral therapy. *J Infect Dis* **2004**; 190:693–6.
 34. Tan DH, Raboud JM, Kaul R, Walmsley SL. Antiretroviral therapy is not associated with reduced herpes simplex virus shedding in HIV coinfecting adults: an observational cohort study. *BMJ Open* **2014**; 4:e004210.
 35. Mayaud P, Legoff J, Weiss HA, et al. Impact of acyclovir on genital and plasma HIV-1 RNA, genital herpes simplex virus type 2 DNA, and ulcer healing among HIV-1-infected African women with herpes ulcers: a randomized placebo-controlled trial. *J Infect Dis* **2009**; 200:216–26.
 36. LeGoff J, Weiss HA, Gresenguet G, et al. Cervicovaginal HIV-1 and herpes simplex virus type 2 shedding during genital ulcer disease episodes. *AIDS* **2007**; 21:1569–78.
 37. Aumakhan B, Hardick A, Quinn TC, et al. Genital herpes evaluation by quantitative TaqMan PCR: correlating single detection and quantity of HSV-2 DNA in cervicovaginal lavage fluids with cross-sectional and longitudinal clinical data. *Virol J* **2010**; 7:328.