

LONDON
SCHOOL of
HYGIENE
& TROPICAL
MEDICINE



LSHTM Research Online

Knight, GM; Dodd, PJ; Grant, AD; Fielding, KL; Churchyard, GJ; White, RG; (2015) Tuberculosis prevention in South Africa. PloS one, 10 (4). e0122514. ISSN 1932-6203 DOI: <https://doi.org/10.1371/journal.pone.0122514>

Downloaded from: <http://researchonline.lshtm.ac.uk/2145754/>

DOI: <https://doi.org/10.1371/journal.pone.0122514>

Usage Guidelines:

Please refer to usage guidelines at <https://researchonline.lshtm.ac.uk/policies.html> or alternatively contact researchonline@lshtm.ac.uk.

Available under license: <http://creativecommons.org/licenses/by/2.5/>

<https://researchonline.lshtm.ac.uk>

RESEARCH ARTICLE

Tuberculosis Prevention in South Africa

Gwenan M. Knight^{1,2}*, Peter J. Dodd³, Alison D. Grant², Katherine L. Fielding², Gavin J. Churchyard^{2,4,5}, Richard G. White^{1,2}

1 TB Modelling Group, Centre for the Mathematical Modelling of Infectious Diseases, London School of Hygiene and Tropical Medicine, London, United Kingdom, **2** TB Centre, London School of Hygiene and Tropical Medicine, London, United Kingdom, **3** School of Health and Related Research, University of Sheffield, Sheffield, United Kingdom, **4** Aurum Institute, Johannesburg, South Africa, **5** School of Public Health, University of Witwatersrand, Johannesburg, South Africa

* These authors contributed equally to this work.

* gwen.knight@lshtm.ac.uk



Abstract

Background

South Africa has one of the highest per capita rates of tuberculosis (TB) incidence in the world. In 2012, the South African government produced a National Strategic Plan (NSP) to control the spread of TB with the ambitious aim of zero new TB infections and deaths by 2032, and a halving of the 2012 rates by 2016.

Methods

We used a transmission model to investigate whether the NSP targets could be reached if immediate scale up of control methods had happened in 2014. We explored the potential impact of four intervention portfolios; 1) “NSP” represents the NSP strategy, 2) “WHO” investigates increasing antiretroviral therapy eligibility, 3) “Novel Strategies” considers new isoniazid preventive therapy strategies and HIV “Universal Test and Treat” and 4) “Optimised” contains the most effective interventions.

Findings

We find that even with this scale-up, the NSP targets are unlikely to be achieved. The portfolio that achieved the greatest impact was “Optimised”, followed closely by “NSP”. The “WHO” and “Novel Strategies” had little impact on TB incidence by 2050. Of the individual interventions explored, the most effective were active case finding and reductions in pre-treatment loss to follow up which would have a large impact on TB burden.

Conclusion

Use of existing control strategies has the potential to have a large impact on TB disease burden in South Africa. However, our results suggest that the South African TB targets are unlikely to be reached without new technologies. Despite this, TB incidence could be dramatically reduced by finding and starting more TB cases on treatment.

OPEN ACCESS

Citation: Knight GM, Dodd PJ, Grant AD, Fielding KL, Churchyard GJ, White RG (2015) Tuberculosis Prevention in South Africa. PLoS ONE 10(4): e0122514. doi:10.1371/journal.pone.0122514

Academic Editor: Andres R. Floto, Cambridge University, UNITED KINGDOM

Received: November 10, 2014

Accepted: February 11, 2015

Published: April 7, 2015

Copyright: © 2015 Knight et al. This is an open access article distributed under the terms of the [Creative Commons Attribution License](https://creativecommons.org/licenses/by/4.0/), which permits unrestricted use, distribution, and reproduction in any medium, provided the original author and source are credited.

Data Availability Statement: All relevant data are within the paper and its Supporting Information files.

Funding: This work was funded by CDC/PEPFAR via the Aurum Institute (U2GPS0008111). RGW is also funded by the Medical Research Council (UK) (MR/J005088/1), the Bill and Melinda Gates Foundation (TB Modelling and Analysis Consortium: Grants 21675 / OPP1084276 and Consortium to Respond Effectively to the AIDS/TB Epidemic: 19790.01). The funders had no role in study design, data collection and analysis, decision to publish, or preparation of the manuscript.

Competing Interests: The authors have declared that no competing interests exist.

Introduction

South Africa suffers from an extremely high burden of tuberculosis (TB) disease: in 2013 it was one of the top six countries ranked by number of incident TB cases (0.4–0.6 million) [1]. Globally, TB is the second leading cause of death from an infectious disease [1].

Several targets for TB control have been set by the United Nations (UN), the World Health Organization (WHO) and the South African government for a range of indicators, with different degrees of specificity and feasibility. For example, the UN Millennium Development Goal, set in 2000 for 2015, to have a falling TB disease incidence globally, [2] has already been reached [1]. However, in the Africa region, primarily because of the rise of HIV, the WHO STOP TB goal to halve TB prevalence and deaths between 1990 and 2015, [3] is unlikely to be achieved [1]. The South African government have produced their own National Strategic Plan (NSP) for tackling “HIV, STIs and TB” [4]. This plan sets out ambitious aims: to halve TB incidence and TB related mortality between 2012 and 2016, with zero new infections and zero TB mortality by 2032.

To reach the NSP targets, the prevention strategies outlined in the plan are “based on current knowledge” [4]. Other interventions under development, such as new TB vaccines, need to be pursued but cannot be used to reach the 2016 target. Efforts to achieve the NSP targets must therefore be based on existing control technologies. New combinations and optimising existing strategies, such as providing antiretroviral therapy (ART) to all people living with HIV (PLHIV) with TB disease and isoniazid preventive therapy (IPT) to all PLHIV pre-ART, may be needed to fulfil the potential of existing methods.

Our aim was to use a transmission model to make a preliminary investigation as to whether the NSP targets could be reached if immediate scale up of existing control methods had happened at the start of 2014.

Methods

Model and basecase scenario

We adapted a previously published, [5] stochastic individual-based simulation model of the transmission dynamics of *M. tuberculosis* (*M.tb.*) and fitted the model to current data on TB and HIV epidemiology in South Africa (see [S1 File](#) for full details). Briefly, the model includes TB and HIV natural history at an individual-level, with population level incidence sustained by *M.tb.* transmission. Latent infection with *M.tb.* (which confers partial protection against progression to disease following re-infection) develops into active (sputum smear negative or positive pulmonary) TB disease at a rate that is higher shortly after (re-)infection and varies with age. The model incorporated data on age-structured social mixing patterns, [6] as well as historic and projected trends in demography [7]. Timing of development of TB disease after (re-)infection is influenced by HIV status and CD4 count; HIV status and age influence the probability of TB disease being smear-positive. The model is built using C. All parameters are found in Table A in [S1 File](#).

In terms of the natural history of TB, individuals are born without *M.tb* infection; can acquire an *M.tb* infection which may, or may not develop into active TB disease; and individuals may, or may not have their active TB disease detected and initiate treatment. The force-of-infection for TB is proportional to the prevalence of active TB, weighted by the infectiousness of each prevalent TB case. We assume age-dependent mixing between different age groups, parameterized with data from a social contact study carried out in South Africa as part of ZAM-STAR [6]. Upon infection with *M.tb*, individuals' time-since-infection is tracked and they are subject to a hazard of developing pulmonary TB disease per unit time. This hazard is higher in

the first 2 years following (re-)infection, with an age-dependence following that used in [8]. In subsequent years, the hazard of activation assumes a lower constant value. Individuals with an *M.tb* infection have a partial protection against reinfection [9], however, a successful re-infection is treated identically to an initial infection.

Upon activation to pulmonary TB, 65% of cases in 20 year olds were assumed smear positive among those without HIV infection, following the age pattern reported in [8], smear negative TB assumed 23% as infectious as smear positive TB [10,11]. Active TB without treatment results in death (70% for smear-positive disease; 30% for smear-negative disease) or else self-cure over a timescale of 3 years based on [12]. These alternatives are modelled as proportional hazards with a Weibull-distributed time-to-event. Self-cure leaves individuals with an *M.tb* infection, and acts like a new infection in terms of activation risks.

Detection and initiation of treatment in those with active TB disease is assumed to occur with a probability taken as the WHO estimate of the case-detection rate [13]. The timing of detection and treatment initiation occurs at a certain fraction of an individual's time-to-outcome without detection and treatment (i.e. more rapidly progressing TB disease is detected proportionately more rapidly).

For PLHIV, CD4+ T-cell counts of cells/mm³ (CD4) and TB risk were explicitly modelled, as was ART initiation and its effect on CD4 count and life expectancy by age. A proportion of PLHIV can be "linked to care" prior to qualifying for ART *i.e.* PLHIV who know their HIV status but have a high CD4 count. This group start ART at the national guideline threshold. The CD4 count at ART start for those detected as HIV positive with a CD4 count under the guideline threshold was taken from a distribution determined by data from a large set of ART cohorts [14]. This distribution has a median CD4 value at ART start of 152 cells/mm³. HIV incidence for each scenario was taken from a deterministic model of HIV transmission (see [S1 File](#)) [15]. The model was calibrated to the situation in South Africa by varying seven key parameters (see [S1 File](#)).

The model basecase scenario assumes continued implementation of control methods as used in South Africa up to mid-2013. This includes IPT to PLHIV at 10% coverage and ART to those PLHIV with active TB at 15% coverage by 2014. Coverage was assumed to rise to 80% coverage by 2015 to reflect the high adherence levels to ART guidelines [16]. In 2010, ART guidelines were revised from initiating those with a CD4 count of less than 200 cells/mm³ (2004 guideline), to < 350 cells/mm³ with coverage to this group reaching 80% by 2012 [16]. The percentage of TB patients that were detected and started onto treatment was 69% [17]. This was independent of HIV status and was composed of both probability of detection and pre-treatment loss to follow-up. Introduction and scale-up of the GeneXpert System (Cepheid, Sunnyvale, CA) was implicitly included in the basecase scenario and we assumed this had no impact on underlying parameters such as the rate at which patients start treatment as reported in the most recent South African data [18,19]. Parameter values are given in the Table A in the [S1 File](#). The mean of 15,000 simulations was used for each outcome for each scenario. This number of simulations was used so that stochastic error was then reduced below that of the precision presented in the results and we could be confident in impact size to within 1%.

Interventions

Interventions were assumed to have started together on the 1st of January 2014 and to have had short scale up times (1 year) to factor in time for preparations,[20] whilst leaving a maximum amount of time to achieve impact before the beginning of 2016. The interventions under consideration involve three separate control measures: ART, IPT, and improved TB case management. These were grouped into four portfolios of interventions for investigation, which are

Table 1. Summary of the interventions included in each portfolio.

Portfolio	ART				IPT		Periodic active case finding		Improved TB case management*	
	At CD4 < 350	At CD4 < 500	Universal test and treat	6 months to PLHIV	36 months to PLHIV	Continuous to PLHIV	6 months to HIV negatives	Coverage		
								Low		High
Basecase	X			X						
NSP	X				X			X	X	
WHO		X			X					
Novel Strategies			X			X	X			
Optimised			X			X	X	X	X	

* Decreased pre-treatment loss to follow-up and improved treatment success.

doi:10.1371/journal.pone.0122514.t001

outlined below and in [Table 1](#) (full details in [S1 File](#)). The portfolios were chosen to represent groups of existing interventions that are recommended in different guidelines (NSP and WHO), or not yet in any (Novel Strategies). We then chose the most effective individual interventions and combined these into one portfolio that was predicted to give maximal impact with current tools (Optimised).

Portfolios

1. **NSP.** This portfolio built on the basecase scenario but with higher adherence to the control measures and additional interventions as discussed in the National Strategic Plan [4]. IPT coverage was increased to 53% of newly detected PLHIV (as recorded in a recent HIV counselling and testing campaign)[21] and set at 36 months in duration. The additional interventions were: improved TB case management and periodic active case finding. The former assumed increased treatment success (50% reduction in treatment failure) and a decreased pre-treatment loss to follow-up (by 50%). The latter assumed annual screening rounds (not just enhanced case finding [22]) reaching 30% of the population, as seen in recent HIV testing campaigns,[23] and a high sensitivity test, such as GeneXpert. When taking into account the acceptance rate of screening and pre-treatment loss to follow up, this intervention was assumed to start 16% and 12% of previously undetected smear positive/negative TB on treatment, respectively.
2. **WHO.** This portfolio was motivated by the World Health Organization guidelines on IPT duration and ART [24]. The IPT coverage was assumed to be as in the NSP portfolio, but the ART initiation guideline was increased in 2014 to a CD4 count of < 500 cells/mm³ with coverage of those eligible reaching 90% by 2020.
3. **Novel Strategies.** This portfolio contained those interventions that are under consideration, but are not yet included in any guidelines. We built on the NSP portfolio by assuming a) ART was given universally (Universal Test and Treat, UTT): annually, 42% of PLHIV who are not on ART were assumed to start ART via this intervention. No additional TB case detection was included in this ART-only version of UTT; b) Continuous IPT was provided to 53% of PLHIV and c) 6 months of IPT was also provided randomly to the HIV negative population with 20% coverage to investigate the potential new use of a currently existing therapy, shown recently to be highly effective [25].

- Optimised.** This portfolio combined the most effective interventions at the realistic coverage levels considered in the other portfolios, with an additional high coverage for periodic case finding as this is advocated for in the National Strategic Plan [4]. It assumed the base-case scenario plus a) UTT; b) 6 months IPT to 20% of HIV negatives; c) continuous IPT to 53% of PLHIV on starting ART; d) 50% decrease in pre-treatment loss to follow-up and an increase in treatment success (a 50% decrease in treatment failure), and e) high coverage (60%) periodic active case finding, with a high sensitivity test such as GeneXpert, starting annually, 32% and 24% of undetected sputum smear positive/negative TB on treatment.

Sensitivity analysis

We evaluated the robustness of our conclusions by exploring the “NSP” portfolio impact using a sensitivity analysis of key model parameters. Full details are in the [S1 File](#).

Results

Basecase

In line with recent data,[26] in the basecase scenario TB incidence and mortality were falling in 2012. The decrease past 2014 was due to declining HIV incidence via maintenance of high ART coverage. Both incidence and mortality flattened from 2020 onwards ([Fig 1](#)).

Intervention Portfolios

Our results suggest, that the “Novel Strategies” and “WHO” portfolios could result in 32% and 22% reductions in TB incidence by 2016 ([Fig 1](#) and [Table 2](#)). Both portfolios peak in impact before 2032 and neither achieved greater than 40% reductions in TB incidence or mortality at any time point. The other two portfolios (“NSP” and “Optimised”) had a much larger impact

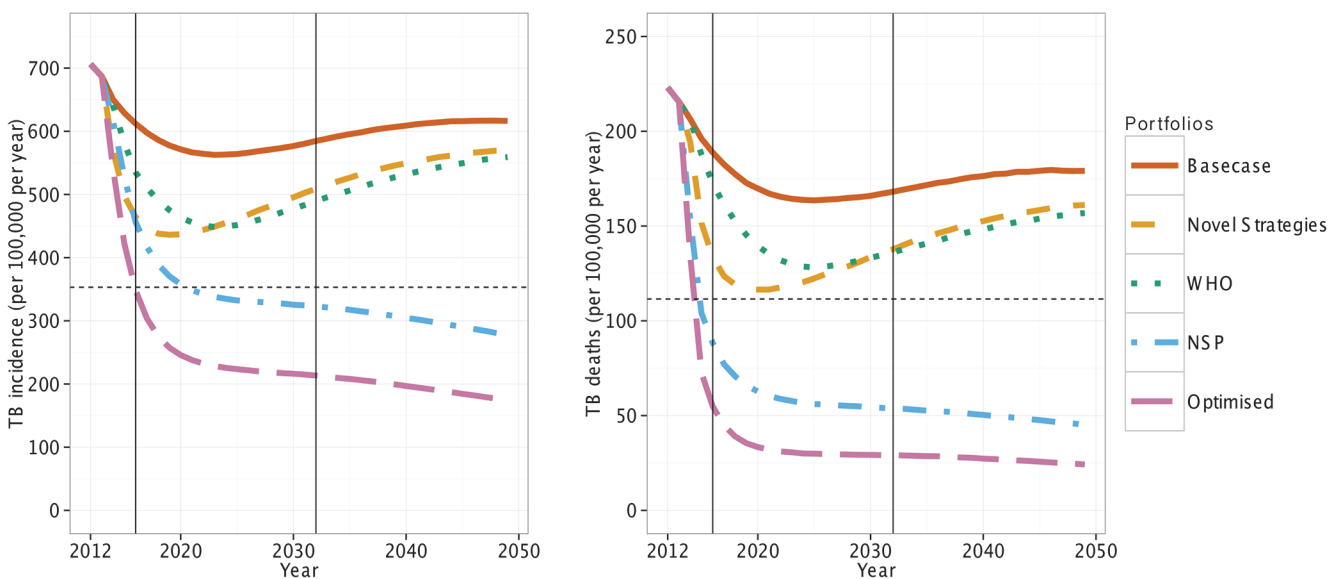


Fig 1. Basecase and impact of the four portfolios on TB incidence and mortality (/100,000/year). The “NSP” and “Optimised” portfolios have the biggest impact. The dashed horizontal lines are the NSP 2016 targets. The solid vertical lines show the timings of the NSP deadlines for 2016 and 2032.

doi:10.1371/journal.pone.0122514.g001

Table 2. Percentage reduction in TB incidence and mortality in each portfolio compared to 2012 levels.

NSP target		2016		2032		2050	
		50% reduction		Zero new cases and deaths		No NSP target; WHO 'elimination' year [3]	
		Incidence	Mortality	Incidence	Mortality	Incidence	Mortality
Portfolio	Basecase	13	15	18	26	14	21
	NSP	32	<u>57</u>	55	75	61	80
	WHO	22	21	32	40	22	31
	Novel Strategies	32	39	29	40	20	29
	Optimised	46	<u>71</u>	70	86	76	89

Bold, underlined values indicate where the reductions are greater than the NSP targets for 2016 and 2032.

doi:10.1371/journal.pone.0122514.t002

by 2016 (Fig 1 and Table 2). By 2016, the “NSP” portfolio resulted in the prevention of a large number of TB deaths (57%) but only a 32% reduction TB incidence.

The final, “Optimised”, portfolio nearly achieved the 2016 NSP goals with a 46% and 71% reduction in incidence and mortality respectively (Fig 1 and Table 2). By 2050, both TB incidence and mortality could be reduced by more than 75% using the “Optimised” portfolio. However, TB incidence and mortality remained greater than the required zero new cases and deaths NSP target for 2032.

When the portfolios were broken down into their contributing interventions, we found that for the high impact portfolios (“NSP” and “Optimised”) most of the impact (on both incidence and mortality) was attributed to reductions in pre-treatment loss to follow up and to periodic (annual) active case finding. In the “NSP” portfolio ~40% of the impact was attributed to the former and ~40% to the latter at low coverage (Fig 2, see S1 File for other portfolio breakdowns).

Individual Interventions

The only single intervention that reduces both TB incidence and deaths by more than 50% by 2050 was annual active case finding in the general population (Fig 2 and S1 File). By 2032, the high sensitivity, high coverage scenario reduced TB incidence by 48% and the number of TB deaths by 58%. The intervention with the next highest impact was a 50% decrease in the pre-treatment loss to follow up, with a ~30% and 52% reduction in TB incidence and deaths respectively by 2032. Despite the interacting nature of the HIV and TB epidemics, the ART interventions in general have only a modest impact, except for UTT, which had a long-term impact on TB incidence of ~20%. The IPT interventions have little long-term impact on TB incidence or deaths. Providing IPT to HIV negatives gave the biggest impact with a 13% and 20% decrease in TB incidence and deaths respectively by 2050.

Reaching the targets

The model predicts that even if the “Optimised” portfolio had been immediately implemented in 2014, the South African 2016 aims will not be achieved (Fig 1). The 2032 goals of zero new cases and deaths are similarly unlikely to be achieved, with only two of the portfolios investigated here (“Optimised” and “NSP”) achieving greater than a 50% reduction in incidence and mortality by 2032. Indeed, both these portfolios achieved this reduction before 2016, thus

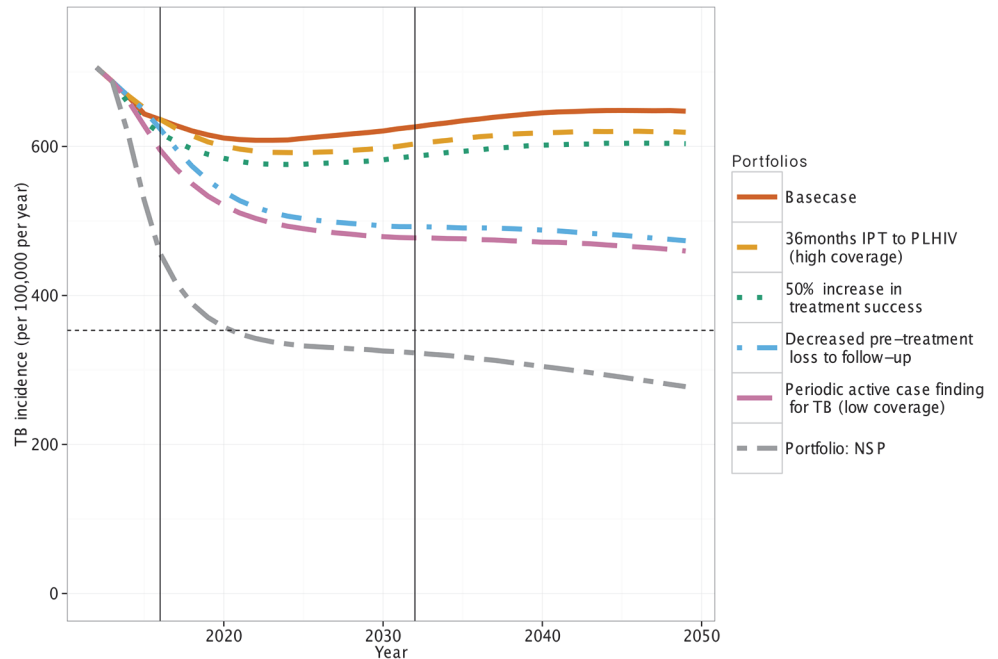


Fig 2. The impact of the intervention components of the “NSP” portfolio on TB incidence (/100,000/year). The dashed horizontal line is the NSP 2016 target. The solid vertical lines show the timing of the NSP deadlines in 2016 and 2032.

doi:10.1371/journal.pone.0122514.g002

partially fulfilling the NSP 2016 targets. Little difference was seen here in the impact of the portfolios between 2032 and 2050.

Thus, our results suggest that high levels of TB control could be achieved using scale up of current tools, as reductions of over 50% in the burden of TB could be achieved by 2032.

Sensitivity analysis

Varying key model parameters has little influence on the impact of the primary “NSP” portfolio ([S1 File](#)). The parameters chosen were the probability that TB on ART is like that in those without HIV, the protection from re-infection if latently infected, the probability of death if TB is not cleared and the ratio of case detection rates by smear status in those without HIV. The only parameter which generated a greater than 3% difference in the impact of the “NSP” portfolio was the effect of ART on the risk of acquiring TB in PLHIV.

Under all parameter ranges explored, the overall difference in impact of the “NSP” portfolio changed within the range of -6.5% to 1% (see [S1 File](#) for more details). This suggests that our conclusion that the “NSP” portfolio would not achieve either of the NSP TB targets is robust.

Discussion

The results presented here suggest that large decreases in the tuberculosis burden of South Africa could be achieved using existing technologies and simply increasing the numbers of patients starting TB treatment. Despite this, we find that even if these portfolios had been immediately scaled up early in 2014, the 2016 and 2032 NSP targets are unlikely to be achieved. Instead, these targets should be seen as useful for advocacy purposes, and goals to which significant progress can be made using current tools. Of the components explored, active case finding and a reduction in pre-treatment loss to follow up were the most effective and could have a

large impact. The individual interventions we considered fell into 3 categories with conclusions that are broadly applicable to other settings: those involving IPT; those involving ART; active case-finding and improved TB case management.

While there is good evidence that IPT is beneficial in reducing TB incidence in individuals with HIV infections,[27] we find that policies involving IPT are likely to have limited population-level impact on TB incidence. This stems from relatively pessimistic assumptions in light of the most recent evidence around the durability of protection from IPT,[28–30] and from the low prevalence of those on IPT in the population. We assumed only 10% of latent infections with *M. tb* were cleared by a full course of IPT [28–30] and that a coverage of IPT of only 10% or 53% of those PLHIV who were IPT naïve could be achieved per year. Although targeted at a group of higher risk for TB (those on ART), scenarios with 6 or 36 months of IPT to those starting ART never exceeded a population prevalence of more than 5% on IPT. On the other hand, prescribing IPT to HIV-negative individuals, resulted in an ~15% prevalence in the general population on IPT. This higher population coverage may have resulted in the greater impact of this HIV-negative targeting, but the risks of such an approach due to side-effects [31] would need to be carefully evaluated before it would be considered in practice.

We predict that widespread use of ART should have a noticeable population-level impact on TB incidence as has been predicted previously [5]. In the short-term, this effect is driven by the reduction in individual rates of TB among PLHIV; in the long term, averted HIV infections also make a contribution, especially for UTT. This impact is despite the assumed lack of complementary TB case finding as in standard UTT. Although ART reduces individual rates of TB, those on ART still have 4-7-fold higher rates of TB than the HIV-negative population, and reductions in mortality can result in increased HIV-prevalence. These competing effects are responsible for a plateau in impact in some ART scenarios, and mean that a policy emphasizing ART initiation in those with TB, without bolstering general provision of ART, can increase population TB incidence by keeping those at highest risk of TB alive [32].

While there is a lack of empirical evidence to support the impact of active case-finding in the general population,[33] our modelling suggests that active case-finding and reductions in pre-treatment loss to follow-up, which act by reducing the pool of infectious individuals, are predicted to have a sustained and accumulating reduction on TB incidence. Our active case-finding scenarios, while clearly very intensive, may not be unachievable. They are comparable to levels achieved in previous active case finding interventions where 20% of undiagnosed cases were thought to be diagnosed per 6 monthly campaigns [34]. We did, however, assume that the population is uniformly reachable by case-finding rounds: that extra TB cases initiated on treatment regardless of symptoms would not have higher rates of pre-treatment loss to follow-up, or overload programme capacity, and that TB cases are uniformly infectious over time. Relaxing any of these assumptions would reduce the predicted impact of active case finding. Future work should specifically tackle the random screening assumption, with targeting of high-risk sub-populations. Pairing a form of active case finding with UTT (as is standard for UTT protocols) is likely to be a powerful tool for TB control.

Reductions in pre-treatment loss to follow-up are also predicted to be a potent interventions and are more easily achievable within the current health infrastructure than active case finding, by measures such as increased efficiencies in the diagnostic process, increased education and improved follow-up by healthcare professionals [35]. These measures should enhance the impact of the now widely available GeneXpert. Improvements in treatment initiation levels made important contributions to reducing TB mortality, but resulted in smaller reductions in TB incidence by affecting outcomes after transmission events had already occurred. This large impact of improved case management has been seen in other models of South Africa TB control [36].

Our model does not explicitly include multi-drug resistance TB, however our key conclusions are robust to this limitation. These key conclusions on overall NSP impact were also robust to our sensitivity analysis. However, because of computational resource constraints, this sensitivity analysis was limited in scope. As such, although we believe it is unlikely, we cannot exclude the possibility that there are combinations of baseline parameter values that would lead the model to predict that the NSP scenario could reach the targets. We also designed our interventions with rapid scale-up timings and thus did not tackle the important question of operational feasibility. Our aim instead was to provide estimates of the upper limits of the impact of current technologies. In relation to this, the relatively small difference between the impact of the “Optimised” and “NSP” portfolios suggest that the additional cost of the higher coverage included in “Optimised” would have to be carefully assessed against relative impact: the lower coverage of active case finding and simply improving TB case management as included in the “NSP” could alone be highly successful in the control of TB. As South Africa moves forward with its adoption of the NSP, this work suggests that close attention should be paid to the implementation and coverage of these interventions that were most successful in this model.

Conclusion

Although current control technologies are unlikely to achieve either of the South Africa targets for TB control, this study predicts that interventions such as active case finding and a reduction in pre-treatment loss to follow up could have a large impact. Our modelling provides evidence on the likely differential relative impact of interventions, needed for future strategy implementation decisions and highlights two important methods that could have a significant impact on future TB burden. We predict that even with the best deployment of the tools we currently have available, new technologies will be needed to reach the 2032 South African TB targets for control; however TB incidence could still be dramatically reduced using only existing control measures.

Supporting Information

S1 File. Supplementary information for “Tuberculosis prevention in South Africa”. (DOCX)

Acknowledgments

We would like to thank Christophe Fraser and Anne Cori for providing the model for the HIV dynamics and Rein Houben for a critical review of the manuscript.

Author Contributions

Conceived and designed the experiments: GK PJD GC RW. Performed the experiments: GK PJD. Analyzed the data: GK PJD AG KF GC RW. Wrote the paper: GK PJD AG KF GC RW.

References

1. WHO (2013) Global Tuberculosis Control.
2. United Nations (2011) Millenium Development Goals Report.
3. WHO (2010) The Global Plan to Stop TB: 2011–2015.
4. South African National Aids Council (SANAC) (2012) National Strategic Plan on HIV, STIs and TB 2012–2016.
5. Pretorius C, Menzies NA, Chindelevitch L, Cohen T, Cori A, et al. (2014) The potential effects of changing HIV treatment policy on tuberculosis outcomes in South Africa: results from three tuberculosis-HIV

- transmission models. *AIDS* 28 Suppl 1: S25–34. doi: [10.1097/QAD.000000000000085](https://doi.org/10.1097/QAD.000000000000085) PMID: [24468944](https://pubmed.ncbi.nlm.nih.gov/24468944/)
6. Dodd PJ, Looker C, Plumb I, Bond G, Schaap A, et al. (In review) *Mycobacterium tuberculosis* infection incidence and social contact patterns in Zambia and South Africa. In: Unpublished, editor.
 7. Department of Economics and Social Affairs PD (2011) World Population Prospects: The 2010 Revision. In: United Nations, editor. New York.
 8. Vynnycky E, Fine PE (1997) The annual risk of infection with *Mycobacterium tuberculosis* in England and Wales since 1901. *Int J Tuberc Lung Dis* 1: 389–396. PMID: [9441091](https://pubmed.ncbi.nlm.nih.gov/9441091/)
 9. Andrews JR, Noubary F, Walensky RP, Cerda R, Losina E, et al. (2012) Risk of progression to active tuberculosis following reinfection with *Mycobacterium tuberculosis*. *Clin Infect Dis* 54: 784–791. doi: [10.1093/cid/cir951](https://doi.org/10.1093/cid/cir951) PMID: [22267721](https://pubmed.ncbi.nlm.nih.gov/22267721/)
 10. Behr MA, Warren SA, Salamon H, Hopewell PC, Ponce de Leon A, et al. (1999) Transmission of *Mycobacterium tuberculosis* from patients smear-negative for acid-fast bacilli. *Lancet* 353: 444–449. PMID: [9989714](https://pubmed.ncbi.nlm.nih.gov/9989714/)
 11. Tostmann A, Kik SV, Kalisvaart NA, Sebek MM, Verver S, et al. (2008) Tuberculosis transmission by patients with smear-negative pulmonary tuberculosis in a large cohort in the Netherlands. *Clin Infect Dis* 47: 1135–1142. doi: [10.1086/591974](https://doi.org/10.1086/591974) PMID: [18823268](https://pubmed.ncbi.nlm.nih.gov/18823268/)
 12. Tiemersma EW, van der Werf MJ, Borgdorff MW, Williams BG, Nagelkerke NJ (2011) Natural history of tuberculosis: duration and fatality of untreated pulmonary tuberculosis in HIV negative patients: a systematic review. *PLoS One* 6: e17601. doi: [10.1371/journal.pone.0017601](https://doi.org/10.1371/journal.pone.0017601) PMID: [21483732](https://pubmed.ncbi.nlm.nih.gov/21483732/)
 13. WHO (2013) TB data. Available: <http://www.who.int/tb/country/en/>. Accessed 2015 March 2
 14. Nash D, Wu Y, Elul B, Hoos D, El Sadr W (2011) Program-level and contextual-level determinants of low-median CD4+ cell count in cohorts of persons initiating ART in eight sub-Saharan African countries. *AIDS* 25: 1523–1533. doi: [10.1097/QAD.0b013e32834811b2](https://doi.org/10.1097/QAD.0b013e32834811b2) PMID: [21750418](https://pubmed.ncbi.nlm.nih.gov/21750418/)
 15. Eaton JW, Johnson LF, Salomon JA, Barnighausen T, Bendavid E, et al. (2012) HIV Treatment as Prevention: Systematic Comparison of Mathematical Models of the Potential Impact of Antiretroviral Therapy on HIV Incidence in South Africa. *PLoS Med* 9: e1001245. doi: [10.1371/journal.pmed.1001245](https://doi.org/10.1371/journal.pmed.1001245) PMID: [22802730](https://pubmed.ncbi.nlm.nih.gov/22802730/)
 16. UNAIDS (2014) AIDSinfo. Available: <http://www.unaids.org/en/dataanalysis/datatools/aidsinfo/>. Accessed 2015 March 2
 17. WHO (2012) Global Tuberculosis Control.
 18. Churchyard GJ, McCarthy K, Fielding KL, Stevens W, Chihota V, et al. (2014) Effect of Xpert MTB/RIF On Early Mortality in Adults With Suspected TB: A Pragmatic Randomized Trial. *CROI*. Boston, MA.
 19. Fielding KL, McCarthy K, Cox H, Erasmus L, Ginindza S, et al. (2014) Xpert as the First-Line TB Test in South Africa: Yield, Initial Loss To Follow-Up, Proportion Treated. *CROI*. Boston, MA.
 20. SANAC (2012) Year 1 key NSP themes.
 21. SANAC (2010) The National HIV counselling and testing campaign and strategy.
 22. Ayles H, Muyoyeta M, Du Toit E, Schaap A, Floyd S, et al. (2013) Effect of household and community interventions on the burden of tuberculosis in southern Africa: the ZAMSTAR community-randomised trial. *Lancet* 382: 1183–1194. doi: [10.1016/S0140-6736\(13\)61131-9](https://doi.org/10.1016/S0140-6736(13)61131-9) PMID: [23915882](https://pubmed.ncbi.nlm.nih.gov/23915882/)
 23. SANAC (2012) Global AIDS Response Progress Report, South Africa. Available: http://www.unaids.org/en/dataanalysis/knowyourresponse/countryprogressreports/2012countries/ce_ZA_Narrative_Report.pdf. Accessed 2015 March 2
 24. WHO (2011) Guidelines for intensified tuberculosis case-finding and isoniazid preventive therapy for people living with HIV in resource-constrained settings. World Health Organization, Geneva, Switzerland: Department of HIV/AIDS and Stop TB Department.
 25. Zelner JL, Murray MB, Becerra MC, Galea J, Lecca L, et al. (2014) Bacillus Calmette-Guérin and isoniazid preventive therapy protect contacts of tuberculosis patients. *Am J Respir Crit Care Med*.
 26. Churchyard GJ, Mametja LD, Mvusi L, Ndjeka N, Hesselting AC, et al. (2014) Tuberculosis control in South Africa: Successes, challenges and recommendations. *South African Medical Journal* 104: 244–248. PMID: [24893501](https://pubmed.ncbi.nlm.nih.gov/24893501/)
 27. Akolo C, Adetifa I, Shepperd S, Volmink J (2010) Treatment of latent tuberculosis infection in HIV infected persons. *Cochrane Database Syst Rev*: CD000171.
 28. Samandari T, Agizew TB, Nyirenda S, Tedla Z, Sibanda T, et al. (2011) 6-month versus 36-month isoniazid preventive treatment for tuberculosis in adults with HIV infection in Botswana: a randomised, double-blind, placebo-controlled trial. *Lancet* 377: 1588–1598. doi: [10.1016/S0140-6736\(11\)60204-3](https://doi.org/10.1016/S0140-6736(11)60204-3) PMID: [21492926](https://pubmed.ncbi.nlm.nih.gov/21492926/)

29. Churchyard GJ, Fielding KL, Lewis JJ, Coetzee L, Corbett EL, et al. (2014) A trial of mass isoniazid preventive therapy for tuberculosis control. *N Engl J Med* 370: 301–310. doi: [10.1056/NEJMoa1214289](https://doi.org/10.1056/NEJMoa1214289) PMID: [24450889](https://pubmed.ncbi.nlm.nih.gov/24450889/)
30. Houben RMGJ, Sumner T, Grant AD, White RG (2014) Ability of preventive therapy to cure latent Mycobacterium tuberculosis infection in HIV-infected individuals in high-burden settings. *Proc Natl Acad Sci U S A*.
31. Kopanoff DE, Snider DE Jr., Caras GJ (1978) Isoniazid-related hepatitis: a U.S. Public Health Service cooperative surveillance study. *Am Rev Respir Dis* 117: 991–1001. PMID: [666111](https://pubmed.ncbi.nlm.nih.gov/666111/)
32. Dodd PJ, Knight GM, Lawn SD, Corbett EL, White RG (2013) Predicting the long-term impact of antiretroviral therapy scale-up on population incidence of tuberculosis. *PLoS One* 8: e75466. doi: [10.1371/journal.pone.0075466](https://doi.org/10.1371/journal.pone.0075466) PMID: [24069418](https://pubmed.ncbi.nlm.nih.gov/24069418/)
33. WHO WHO: Systematic screening for active tuberculosis: principles and recommendations.
34. Corbett EL, Bandason T, Duong T, Dauya E, Makamure B, et al. (2010) Comparison of two active case-finding strategies for community-based diagnosis of symptomatic smear-positive tuberculosis and control of infectious tuberculosis in Harare, Zimbabwe (DETECTB): a cluster-randomised trial. *Lancet* 376: 1244–1253. doi: [10.1016/S0140-6736\(10\)61425-0](https://doi.org/10.1016/S0140-6736(10)61425-0) PMID: [20923715](https://pubmed.ncbi.nlm.nih.gov/20923715/)
35. Botha E, den Boon S, Lawrence KA, Reuter H, Verver S, et al. (2008) From suspect to patient: tuberculosis diagnosis and treatment initiation in health facilities in South Africa. *Int J Tuberc Lung Dis* 12: 936–941. PMID: [18647454](https://pubmed.ncbi.nlm.nih.gov/18647454/)
36. Dye C, Glaziou P, Floyd K, Raviglione M (2012) Prospects for Tuberculosis Elimination. *Annu Rev Public Health* 34: 271–286. doi: [10.1146/annurev-publhealth-031912-114431](https://doi.org/10.1146/annurev-publhealth-031912-114431) PMID: [23244049](https://pubmed.ncbi.nlm.nih.gov/23244049/)