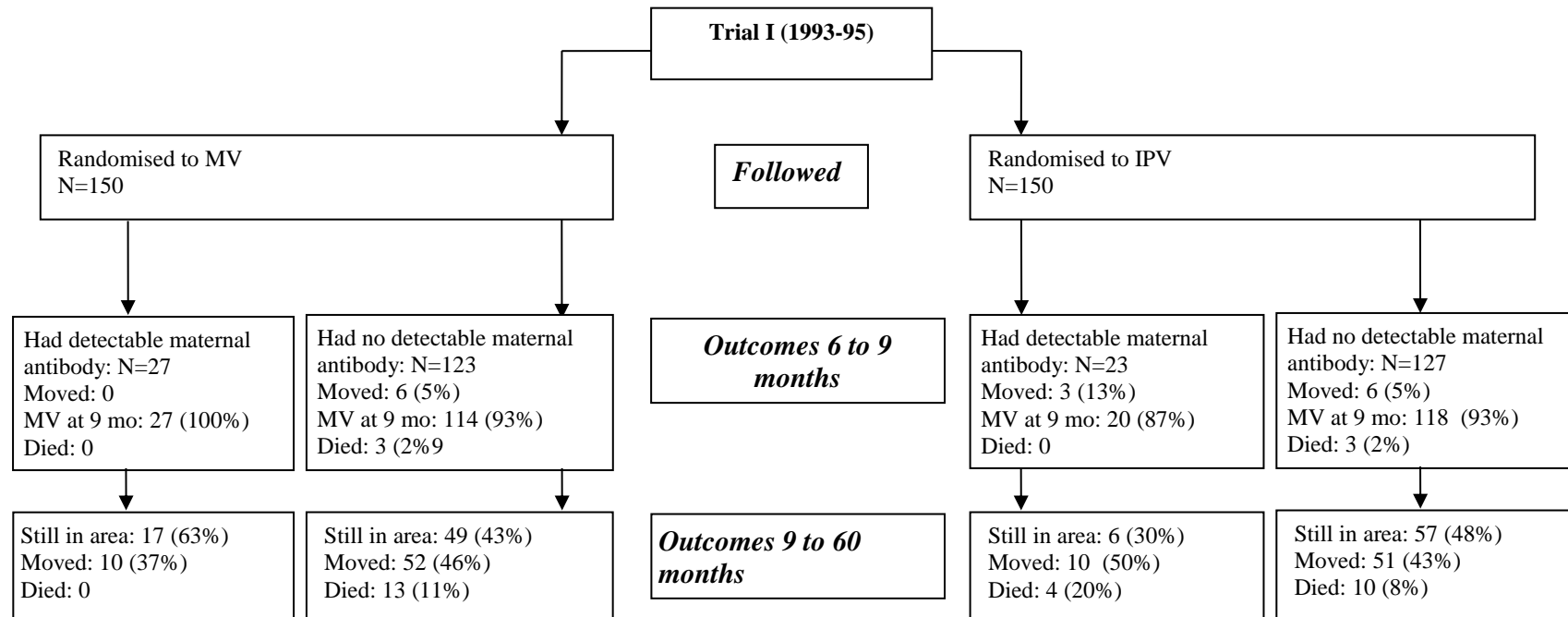
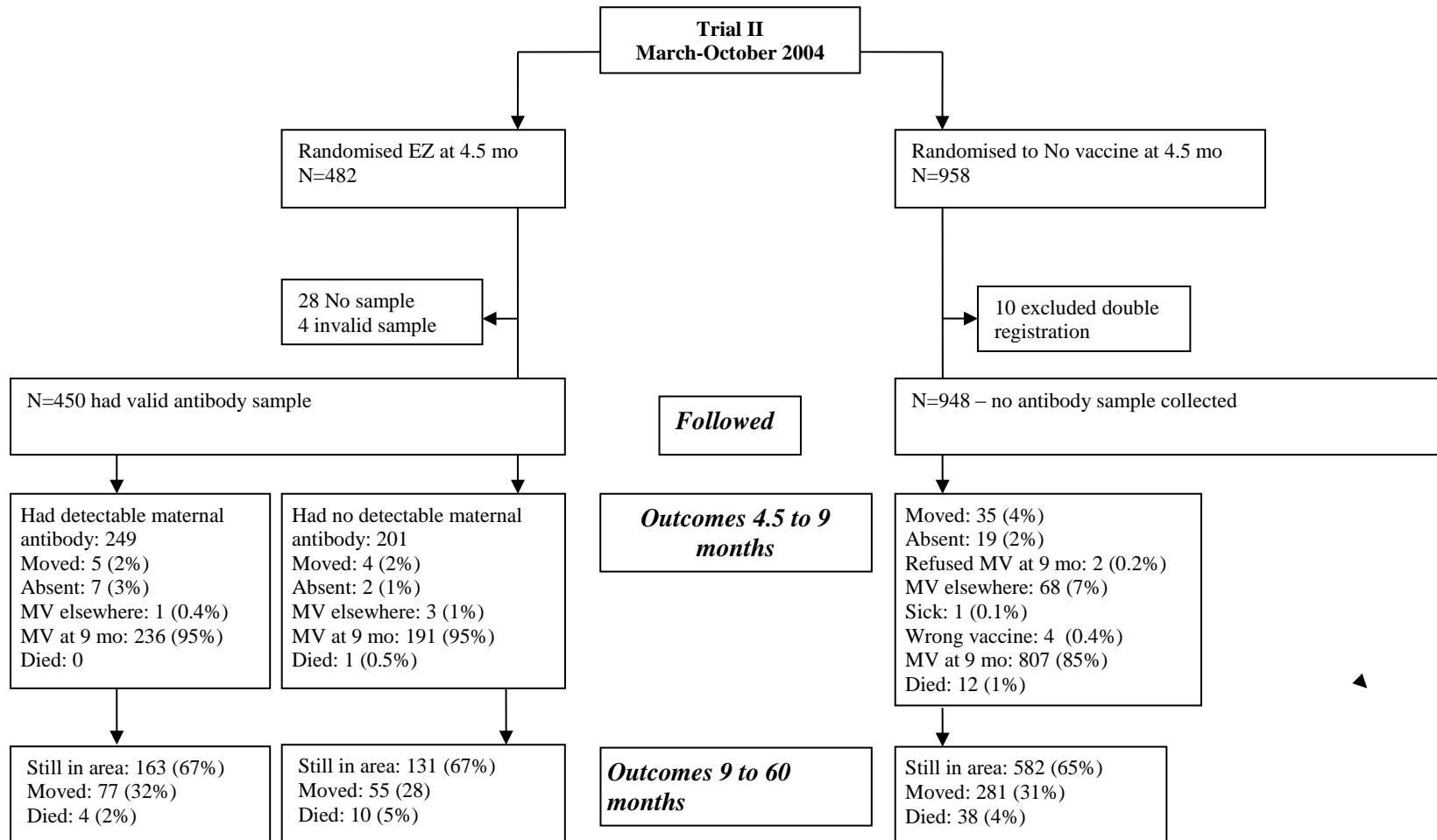


Supplementary table 1. Causes of death by verbal autopsy according to maternal antibody level at time of measles vaccination in Trial II⁵

Cause of death	Undetectable measles antibody level	Had maternal measles antibody
Respiratory infection	3	1
Diarrhoea, diarrhoea and vomiting	2	2
Malaria, fever and anaemia	4	
Traditional ceremony (mongoloid child)	1	
No information (family moved)	1	1
Total	11	4

Supplementary Figure 1: Trial diagrams for the two early two-dose measles vaccination trials.





Notes: MV=measles vaccine; mo=month