

LONDON
SCHOOL of
HYGIENE
& TROPICAL
MEDICINE



LSHTM Research Online

MacPherson, P; Choko, AT; Webb, EL; Thindwa, D; Squire, SB; Sambakunsi, R; van Oosterhout, JJ; Chunda, T; Chavula, K; Makombe, SD; +2 more... Lalloo, DG; Corbett, EL; (2013) Development and Validation of a Global Positioning Systembased Map Book System for Categorizing Cluster Residency Status of Community Members Living in High-Density Urban Slums in Blantyre, Malawi. *American journal of epidemiology*, 177 (10). pp. 1143-1147. ISSN 0002-9262 DOI: <https://doi.org/10.1093/aje/kws376>

Downloaded from: <http://researchonline.lshtm.ac.uk/1105282/>

DOI: <https://doi.org/10.1093/aje/kws376>

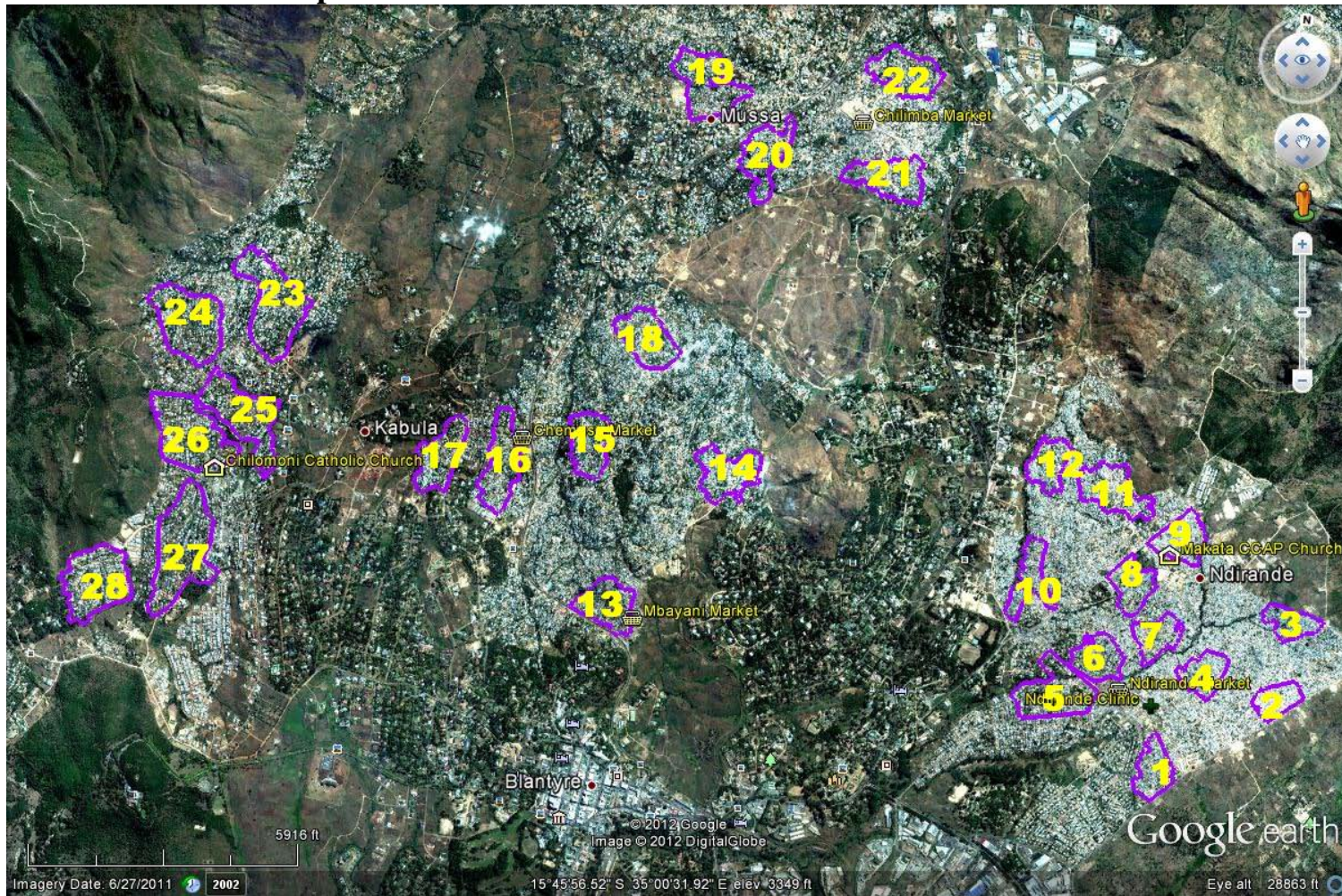
Usage Guidelines:

Please refer to usage guidelines at <https://researchonline.lshtm.ac.uk/policies.html> or alternatively contact researchonline@lshtm.ac.uk.

Available under license: <http://creativecommons.org/licenses/by-nc-nd/2.5/>

<https://researchonline.lshtm.ac.uk>

Web Figure 1: Overall study area (northwest Blantyre, Malawi – August 2011) showing cluster boundaries and landmarks of local importance



Web Figure 2: Example cluster boundary (purple - Ndirande, northwest Blantyre, Malawi, August 2011) showing residences and annotated landmarks

