

LONDON  
SCHOOL of  
HYGIENE  
& TROPICAL  
MEDICINE



LSHTM Research Online

Mutevedzi, PC; Lessells, RJ; Newell, ML; (2013) Disengagement from care in a decentralised primary health care antiretroviral treatment programme: cohort study in rural South Africa. *Tropical medicine & international health*. ISSN 1360-2276 DOI: <https://doi.org/10.1111/tmi.12135>

Downloaded from: <http://researchonline.lshtm.ac.uk/967492/>

DOI: <https://doi.org/10.1111/tmi.12135>

**Usage Guidelines:**

Please refer to usage guidelines at <https://researchonline.lshtm.ac.uk/policies.html> or alternatively contact [researchonline@lshtm.ac.uk](mailto:researchonline@lshtm.ac.uk).

Available under license: <http://creativecommons.org/licenses/by/2.5/>

<https://researchonline.lshtm.ac.uk>

# Disengagement from care in a decentralised primary health care antiretroviral treatment programme: cohort study in rural South Africa

Portia C. Mutevedzi<sup>1,2</sup>, Richard J. Lessells<sup>1,3</sup> and Marie-Louise Newell<sup>1,4</sup>

<sup>1</sup> Africa Centre for Health and Population Studies, University of KwaZulu-Natal, Somkhele, South Africa

<sup>2</sup> Department of Infection and Population Health, University College London, London, UK

<sup>3</sup> Department of Clinical Research, London School of Hygiene and Tropical Medicine, London, UK

<sup>4</sup> Institute of Child Health, University College London, London, UK

## Abstract

**OBJECTIVE** To determine rates of, and factors associated with, disengagement from care in a decentralised antiretroviral programme.

**METHODS** Adults ( $\geq 16$  years) who initiated antiretroviral therapy (ART) in the Hlabisa HIV Treatment and Care Programme August 2004–March 2011 were included. Disengagement from care was defined as no clinic visit for 180 days, after adjustment for mortality. Cumulative incidence functions for disengagement from care, stratified by year of ART initiation, were obtained; competing-risks regression was used to explore factors associated with disengagement from care.

**RESULTS** A total of 4,674 individuals (median age 34 years, 29% male) contributed 13 610 person-years of follow-up. After adjustment for mortality, incidence of disengagement from care was 3.4 per 100 person-years (95% confidence interval (CI) 3.1–3.8). Estimated retention at 5 years was 61%. The risk of disengagement from care increased with each calendar year of ART initiation ( $P$  for trend  $< 0.001$ ). There was a strong association between disengagement from care and higher baseline CD4+ cell count (subhazard ratio (SHR) 1.94 ( $P < 0.001$ ) and 2.35 ( $P < 0.001$ ) for CD4+ cell count 150–200 cells/ $\mu$ l and  $> 200$  cells/ $\mu$ l respectively, compared with CD4 count  $< 50$  cells/ $\mu$ l). Of those disengaged from care with known outcomes, the majority (206/303, 68.0%) remained resident within the local community.

**CONCLUSIONS** Increasing disengagement from care threatens to limit the population impact of expanded antiretroviral coverage. The influence of both individual and programmatic factors suggests that alternative service delivery strategies will be required to achieve high rates of long-term retention.

**keywords** HIV-1, antiretroviral agents, primary health care, delivery of health care, lost to follow-up, disengagement from care

## Introduction

Long-term retention in human immunodeficiency virus (HIV) care is one of the key challenges facing public health systems in low-income and middle-income countries (Baggaley *et al.* 2012; World Health Organization 2012). This is especially true in South Africa, which has rapidly expanded access to antiretroviral therapy (ART) through the public health system since 2004 and now operates the largest ART programme in the world (Joint United Nations Programme on HIV/AIDS (UNAIDS) (2012). The South African National Strategic Plan 2012–2016 has a target of 80% overall retention at 5 years (Department of Health 2011), yet there are few published data on long-term retention. Here, we utilise linked longi-

tudinal data from a rural HIV treatment programme and a demographic surveillance system to quantify rates of disengagement from care, after adjustment of loss to follow-up (LTF) for mortality, to explore the association of disengagement from care with key individual, household and health system characteristics and finally to determine residency status for those disengaged from care.

## Methods

### Hlabisa HIV Treatment and Care Programme and Africa Centre Demographic Information System (ACDIS)

The Hlabisa HIV Treatment & Care Programme (HHTCP) delivers comprehensive HIV treatment and care

**Table 1** Characteristics of 4674 adult members of the demographic surveillance who initiated antiretroviral therapy (ART)

	<i>n</i>	% (median)	95% CI (IQR)
Sex, male	1354	29.0	27.7–30.3
Age, years	4674	(34)	(28–42)
Baseline CD4+ cell count*, cells/ $\mu$ l	4477	(129)	(67–182)
Year of ART initiation			
2004–2006	760	16.3	15.2–17.4
2007	758	16.2	15.2–17.3
2008	1009	21.6	20.4–22.8
2009	882	18.9	17.8–20.2
2010	981	21.0	19.9–22.2
2011†	284	6.1	5.4–6.8
Current clinic‡			
Township	1648	35.3	33.9–36.6
Town	663	14.2	13.2–15.2
Hospital	182	3.9	3.3–4.5
Rural clinics ( $\times$ 14)	2181	46.7	45.2–48.1
Ever switched clinic			
No	3432	87.6	86.6–88.7
Yes	372	9.5	8.6–10.4
Unknown	112	2.9	2.3–3.4
Transfer into the programme	160	3.4	2.9–3.9
In-migration prior to ART initiation	499	10.7	9.8–11.6
Number of days from eligibility to initiation	4410	(49)	(30–78)
Employed at initiation			
No	1683	36.0	34.6–37.4
Yes	2361	50.5	49.1–52.0
Missing	630	13.5	12.5–14.5
Employed at last follow-up			
No	2732	58.5	57.0–60.0
Yes	1650	35.3	33.9–36.7
Missing	292	6.3	5.6–6.9
Education (highest level achieved)			
Secondary	2195	47.0	45.5–48.4
Primary	894	19.1	18.0–20.3
None	1203	25.7	24.5–27.0
Missing	382	8.2	7.4–9.0
Distance to nearest clinic, km			
Median	3303	(2.3)	(0.8–9.8)
>5 km	1278	38.7	37.0–40.4
Distance to nearest main tarred road (km)			
Median	3303	(2.3)	(0.8–9.8)
>5 km	1278	27.3	26.1–28.6
Marital status			
Married	451	9.7	8.8–10.5
Never married	3580	76.8	75.6–78.0
Engaged	167	3.6	3.1–4.1
Divorced/widowed/separated	463	9.9	9.1–10.8

(continued)

**Table 1** (Continued)

	<i>n</i>	% (median)	95% CI (IQR)
Household owner			
Self	1470	37.4	35.9–38.9
Spouse	244	6.2	5.4–7.0
Other	2220	56.4	54.9–58.0
Gender of household owner, male	2059	54.0	52.5–55.6
Age of household owner	3810	(50)	(41–60)
Number of individuals in household	3859	(8)	(5–12)

CI, confidence interval; IQR, interquartile range.

Figures in parentheses represent medians and interquartile ranges.

\*Baseline CD4+ cell count defined as the last measured CD4+ cell count up to 180 days prior to date of ART initiation.

†Includes to 31 March 2011.

‡Although only six clinics are situated within the demographic surveillance area, some members of the surveillance access clinics outside the surveillance area but within the subdistrict.

in Hlabisa health subdistrict, northern KwaZulu-Natal (Mutevedzi *et al.* 2010; Houlihan *et al.* 2011). Treatment and care is devolved to 17 primary health care (PHC) clinics and is delivered largely by nurses and counsellors in adherence to national guidelines. All treatment and care is provided free of charge. Clinical information is collected at time of ART initiation for all individuals and is transferred from standardised paper-based clinic records to a Microsoft® SQL database housed at the Africa Centre. Subsequent visits on ART and changes in vital status (death, LTF, transfer out) are captured on paper-based records and transferred to the database each month.

Since 2000, demographic data have been collected from around 11 000 households and 85 000 individuals in an area of 438 km<sup>2</sup> situated within Hlabisa health subdistrict (Tanser *et al.* 2008). An estimated 30–40% of people in the HHTCP live in this area; six of the 17 PHC clinics are situated within the surveillance area.

Deaths of individuals classified as lost to follow-up from the programme were identified through linkage of individual records between programme and surveillance databases; in October 2011, a separate exercise was undertaken, wherein additional deaths were identified through linkage with the National Population Register (NPR).

### Data analysis

This analysis included all adults ( $\geq$ 16 years) who were members of the demographic surveillance system and initiated ART in the HHTCP between 1 August 2004 and

31 March 2011. In-migration prior to ART initiation was defined as migration into the area in the 12 months before the date of ART initiation. LTF was defined as 180 days having elapsed since the last recorded clinic visit, in adherence to established definitions (Chi *et al.* 2011). Disengagement from care was defined as LTF adjusted for mortality: individuals recorded as LTF who were found, through linkage, to have died within 180 days of the last recorded clinic visit were reclassified as deaths. Individuals who formally transferred care out of the programme to another health facility were defined as transfers out (TRO).

Observation started at date of ART initiation, or date of transfer into programme for those already on ART, and ended at date of death, date of last clinic visit (for LTF and TRO) or database closure (12 July 2012). Cumulative incidence functions for disengagement from care, stratified by year of ART initiation and adjusted for all covariates in the final multivariable model, were obtained using the Coviello and Boggess method (Coviello & Boggess 2004). Overall programme retention at 5 years was estimated from the cumulative incidence curve. As disengagement from care occurs in the context of competing risks of mortality and transfers, competing-risks regression was used to explore factors associated with disengagement (Bakoyannis & Touloumi 2008; Gutierrez 2010). Individual and household socio-demographic characteristics, as well as geographical factors, were obtained from ACDIS with reference to the last clinic visit date. The subhazard ratio (SHR) was derived as the risk of disengagement for individuals in a certain category compared with a reference category, in the presence of competing risks of death and transfer out. All analyses were conducted using STATA 11.2 (StataCorp, College Station, Texas), and all results are reported at 5% significance level.

### Ethics statement

Ethical approval was granted by the Biomedical Research Ethics Committee of the University of KwaZulu-Natal (refs. BE066/07 & E134/06) and the Health Research Committee of the KwaZulu-Natal Department of Health (refs. HRKM012/07 & HRKM032/08).

## Results

### Cohort characteristics

A total of 4674 adult members of the demographic surveillance system initiated ART between 1 August 2004 and 31 March 2011 (Table 1) and contributed 13 610 person-years of follow-up (median 2.77 years).

### Disengagement from care

Overall, 676 (14.5%) died, 260 (5.6%) transferred out of the programme, 558 (11.9%) were LTF, and 3180 (68.0%) were alive on ART (Figure 1). Of those LTF, 91 (16.3%) had died within 180 days of their last clinic visit [median time 7 days, interquartile range (IQR) 0–36]. Consequently, the true mortality was 16.4% ( $n = 767$ ) and the proportion disengaged from care was 10.0% ( $n = 467$ ); the rate of disengagement was 3.4 per 100 person-years [95% confidence interval (CI) 3.1–3.8]. After adjustment for mortality, the first 3 months post-ART initiation remained the period with the highest rate of disengagement (Table 2). The rate of disengagement increased for each calendar year of ART initiation (Figure 2). Overall programme retention at 5 years was estimated at 61%.

### Factors associated with disengagement from care

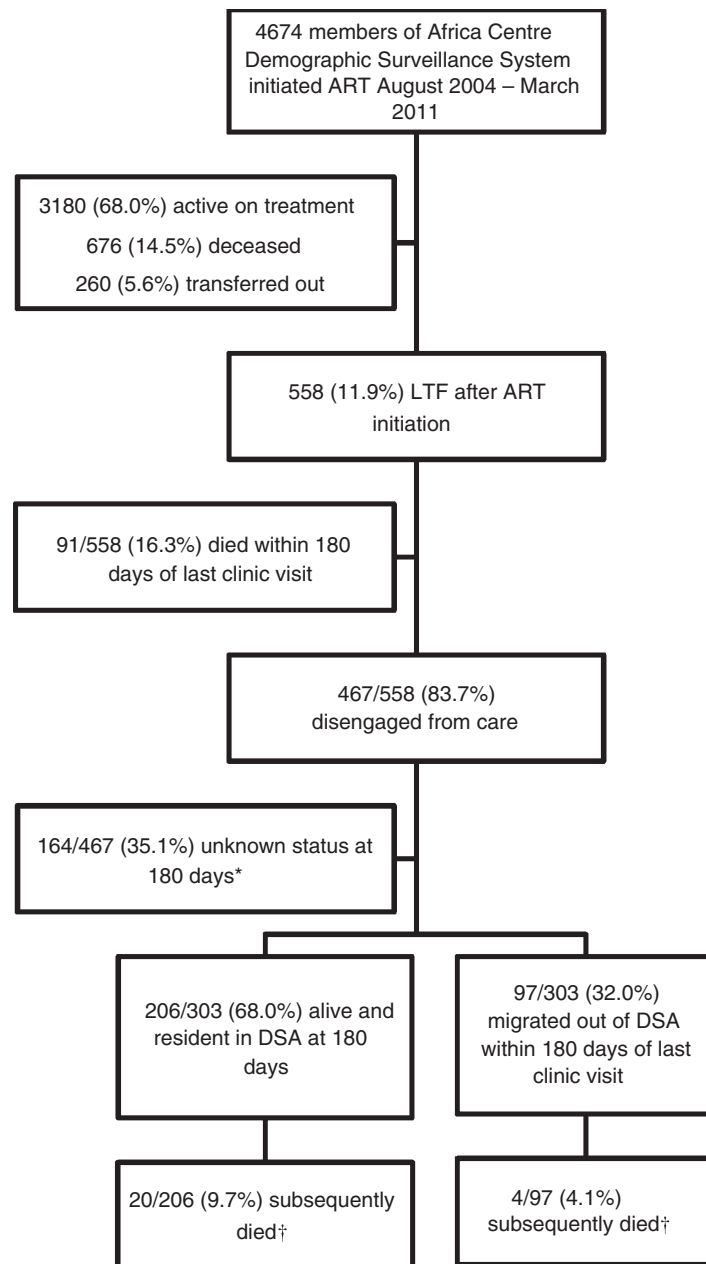
There was a significant trend in increasing risk of disengagement from care with increasing baseline CD4+ cell count: SHR 1.56, 1.75, 1.94 and 2.35 for CD4+ cell count 50–99, 100–149, 150–200 and >200 cells/ $\mu$ l, respectively, compared with CD4 count <50 cells/ $\mu$ l (Figure 3). Year of ART initiation was strongly associated with disengagement from care, with risk progressively increasing with each calendar year ( $P < 0.002$  across all years). Individuals who had migrated into the AC surveillance area in the year prior to ART initiation were 53% more likely to disengage from care compared with those resident throughout (SHR 1.53,  $P = 0.03$ ).

### Outcomes after disengagement from care

Of the 467 individuals disengaged from care, most (303, 65.9%) had surveillance data available beyond 180 days from last clinic visit. The majority (206/303, 68.0%) remained resident within the surveillance area, whereas 97 (32.0%) had migrated outside the surveillance area (median time from last clinic visit to migration 2 days, IQR 2–157). Overall, 24 individuals died subsequent to disengagement, a median of 455 days (IQR 287–590) after their last clinic visit.

## Discussion

In South Africa, the rapid scale-up of HIV treatment programmes has put enormous strain on health systems, especially in rural areas, where health systems remain critically under-resourced (Versteeg & Couper 2011).



LTF, lost to follow-up; DSA, Demographic Surveillance Area

\* Unknown status refers to individuals for whom there is no surveillance data from after the LTF reference date (last clinic visit + 180 days)

† Median time to death for these 24 deaths was 455 days (IQR 287–590) from last clinic visit

**Figure 1** Flow diagram of 4674 individuals from time of ART initiation to determination of vital status after disengagement from care.

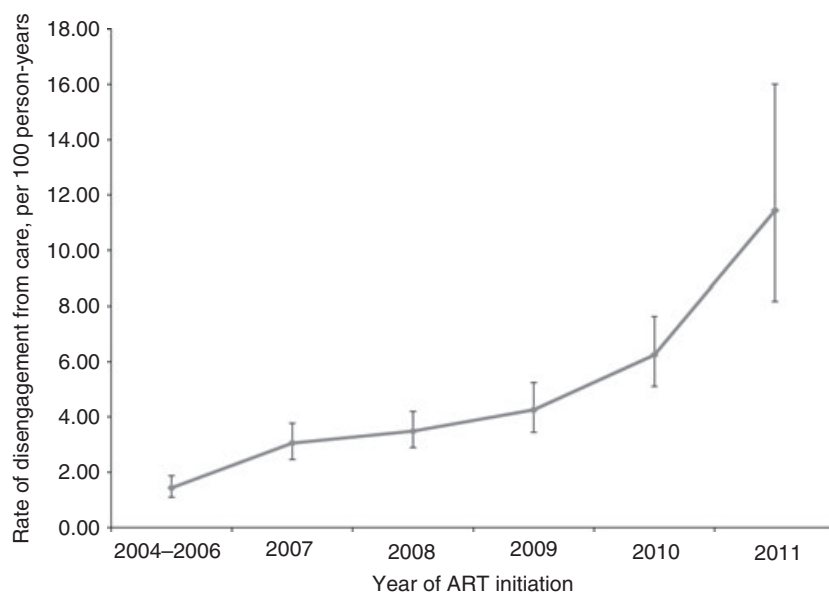
The programme reported here has rapidly expanded ART coverage resulting in positive impacts on population-level mortality and on risk of HIV acquisition (Herbst *et al.*

2009; Cooke *et al.* 2010; Mutevedzi *et al.* 2010; Bor *et al.* 2013; Tanser *et al.* 2013). Increasing disengagement from care has the potential to limit these gains, and

**Table 2** Rates of loss to follow-up (LTF) and disengagement from care (after adjustment of LTF for mortality), per 100 person-years

Cohort period (months)	Person-time	Loss to follow-up			Disengagement from care		
		Failures	Rate	95% CI	Failures	Rate	95% CI
0–3	1113.62	91	8.17	6.65–10.04	58	5.21	4.03–6.74
3–12	3076.44	121	3.93	3.29–4.70	99	3.22	2.64–3.92
12–24	3486.20	127	3.64	3.06–4.33	112	3.21	2.67–3.87
24–36	2538.28	97	3.82	3.13–4.66	86	3.39	2.74–4.19
36	3395.74	122	3.59	3.01–4.29	112	3.30	2.74–3.97
Total	13610.28	558	4.10	3.77–4.45	467	3.43	3.13–3.76

CI, confidence interval.



**Figure 2** Rates of disengagement from care, stratified by calendar year of antiretroviral therapy initiation.

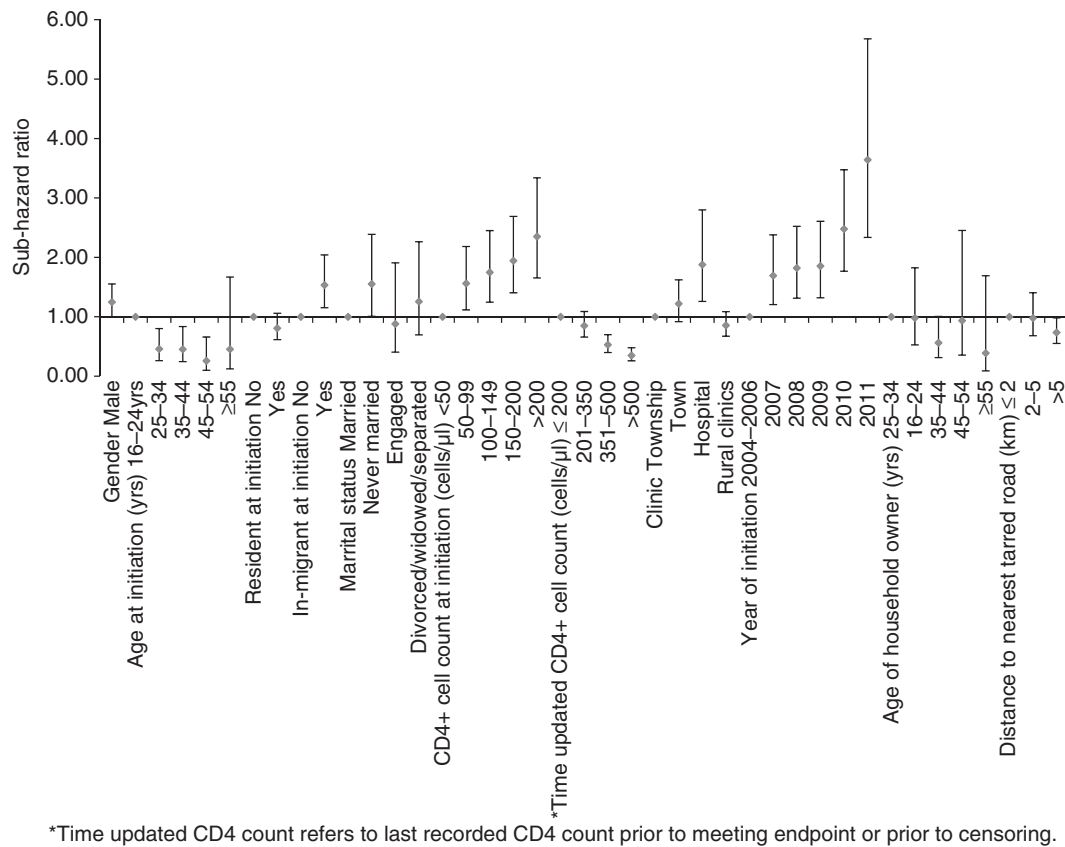
these data highlight the need to develop successful long-term retention strategies.

Overall programme retention at 5 years was estimated at 61%, below the target of 80% in the National Strategic Plan (Department of Health 2011). There are limited data on long-term retention, and this is the first report with long-term follow-up from a rural PHC programme. A combined analysis of eight urban public sector ART programmes reported overall programme retention of 64% at 3 years (Cornell *et al.* 2010), whereas two individual programmes reported combined LTF and mortality at 5 and 6 years, respectively, of 35.3% and 37.4% (Boulle *et al.* 2010; Nglazi *et al.* 2011). Our estimated retention at 5 years of 61% is broadly comparable to these studies, suggesting there may be relatively limited heterogeneity in programmatic performance.

The finding that disengagement from care has increased with each year of programme scale-up is of major

concern: individuals enrolled on ART in 2010 and 2011 had more than double the risk of disengagement compared with those enrolled in 2004–2006. This supports findings from other programmes (Boulle *et al.* 2010; Fatti *et al.* 2011; Nglazi *et al.* 2011), although only one had corrected LTF for mortality (Boulle *et al.* 2010). This may reflect health systems struggling to cope with increasing patient load. In this programme, service delivery has been devolved to PHC level since inception in 2004, so whether models of care with further decentralisation outside the health system into the community could improve long-term retention should be evaluated (Decroo *et al.* 2011; Fatti *et al.* 2012; Rich *et al.* 2012).

With moves towards earlier initiation of ART and the expanded use of treatment for prevention, concern has been raised about whether adherence and retention will be different in those who are less symptomatic at the time of ART initiation (Lockman & Sax 2012). In this



**Figure 3** Subhazard ratios for disengagement from care in the presence of competing risks of mortality and transfer out. Model adjusted for education level and employment as at time of last clinic visit.

light, the association between higher pre-treatment CD4+ cell count and increasing disengagement is of concern. Mathematical models exploring HIV treatment for prevention have demonstrated that the impact on HIV incidence is particularly sensitive to changes in programme retention but have assumed low rates of disengagement, based on data from the early phase of treatment scale-up, which may not reflect the current situation (Granich *et al.* 2009; Hontelez *et al.* 2011; Eaton *et al.* 2012).

There are high levels of population mobility in this rural area, and migration dynamics are complex (Muhwava *et al.* 2010). About one in ten people who initiated ART in this programme had migrated into the area in the year before ART initiation, consistent with our previous findings that people return to the family home when unwell and to access ART (Welaga *et al.* 2009; Olgati *et al.* 2012). These in-migrants were more likely to disengage after ART initiation, which may partially reflect people returning to employment (Bor *et al.* 2012). The highest rates of disengagement from care were observed in the first 3 months after ART initiation. Disengagement

during this early time period could also be explained by early morbidity, drug toxicity or problems with the patient/provider relationship at the healthcare facility. These early losses, combined with early mortality, highlight that the first few months after ART initiation remain a critical period when more intensive support might be required, and it may be that programmes are increasingly unable to provide that extra support.

Interpretation of these results should be subject to some limitations. The reclassification of deaths included those who died within 180 days of last clinic visit. This is a relatively long time period and therefore might encompass some people who disengaged from care and died as a result of ART interruption, thus underestimating true disengagement from care and its impact. However, the median time to death for those reclassified was 7 days and almost three-quarters died within a month of the last clinic visit, suggesting that most deaths occurred before the next scheduled clinic visit. We were unable to identify individuals that disengaged but then reengaged with care, an occurrence that has been reported to be



quite frequent elsewhere (Kranzer *et al.* 2010). Failure to capture these interruptions in care could underestimate the potential impact of disengagement on both individual- and population-level outcomes. The additional support provided by a non-governmental organisation might contribute to differences in programmatic outcomes, so this cannot necessarily be taken to be truly representative of all public sector programmes.

In summary, increasing rates of disengagement from care underline the need for new service delivery strategies to achieve the high rates of long-term retention needed to sustain the positive impacts of ART roll-out.

### Acknowledgements

We thank all the community members who contribute data and all the personnel that contribute to data collection and curation in both the Hlabisa HIV Treatment and Care Programme and the Africa Centre Demographic Surveillance System. We also thank Colin Newell for assistance with data linkage and extraction and Andrew Boulle for facilitating the linkage with the NPR. The work was supported by a core grant to the Africa Centre from the Wellcome Trust (grant number 082384). RL is supported by the Wellcome Trust (grant number 090999). The Hlabisa HIV Treatment and Care Programme has received support through the United States Agency for International Development (USAID) and the President's Emergency Plan (PEPFAR) under the terms of Award No. 674-A-00-08-00001-00. The opinions expressed herein are those of the authors and do not necessarily reflect the view of the USAID or the United States Government. The funders had no role in study design, data collection and analysis, decision to publish or preparation of the manuscript.

### References

- Baggaley R, Negussie E & Ball A (2012) Improving retention at all points in the HIV care cascade: the WHO perspective [WEAE0207]. *19th International Conference on AIDS*. Washington, DC.
- Bakoyannis G & Touloumi G & On Behalf of Cascade Collaboration (2008) *A practical guide on modelling competing risk data*. Available: [http://www.ctu.mrc.ac.uk/cascade/content\\_pages/documents\\_and\\_files/Comp\\_Risks\\_guide.pdf](http://www.ctu.mrc.ac.uk/cascade/content_pages/documents_and_files/Comp_Risks_guide.pdf) [Accessed 3 September 2012].
- Bor J, Tanser F, Newell ML & Barnighausen T (2012) In a study of a population cohort in South Africa, HIV patients on antiretrovirals had nearly full recovery of employment. *Health Affairs (Project Hope)* **31**, 1459–1469.
- Bor J, Herbst AJ, Newell ML & Barnighausen T (2013) Increases in adult life expectancy in rural South Africa: valuing the scale-up of HIV treatment. *Science* **339**, 961–965.
- Boulle A, Van Cutsem G, Hilderbrand K *et al.* (2010) Seven-year experience of a primary care antiretroviral treatment programme in Khayelitsha, South Africa. *AIDS* **24**, 563–572.
- Chi BH, Yiannoutsos CT, Westfall AO *et al.* (2011) Universal definition of loss to follow-up in HIV treatment programs: a statistical analysis of 111 facilities in Africa, Asia, and Latin America. *PLoS Medicine* **8**, e1001111.
- Cooke G, Tanser F, Barnighausen T & Newell M (2010) Population uptake of antiretroviral treatment through primary care in rural South Africa. *BMC Public Health* **10**, 585.
- Cornell M, Grimsrud A, Fairall L *et al.* (2010) Temporal changes in programme outcomes among adult patients initiating antiretroviral therapy across South Africa 2002–2007. *AIDS* **24**, 2263–2270.
- Coviello V & Boggess M (2004) Cumulative incidence estimation in the presence of competing risks. *The STATA Journal* **4**, 103–112.
- Decroo T, Telfer B, Biot M *et al.* (2011) Distribution of antiretroviral treatment through self-forming groups of patients in Tete Province, Mozambique. *Journal of Acquired Immune Deficiency Syndromes* **56**, e39–e44.
- Department of Health, Republic of South Africa and South African National Aids Council (2011) National Strategic Plan on HIV, STIs and TB 2012–2016. SANAC, Pretoria.
- Eaton JW, Johnson LF, Salomon JA *et al.* (2012) HIV treatment as prevention: systematic comparison of mathematical models of the potential impact of antiretroviral therapy on HIV incidence in South Africa. *PLoS Medicine* **9**, e1001245.
- Fatti G, Grimwood A, Mothibi E & Shea J (2011) The effect of patient load on antiretroviral treatment programmatic outcomes at primary health care facilities in South Africa: a multi-cohort study. *Journal of Acquired Immune Deficiency Syndromes* **58**, e17–e19.
- Fatti G, Meintjes G, Shea J, Eley B & Grimwood A (2012) Improved survival and antiretroviral treatment outcomes in adults receiving community-based adherence support: 5-year results from a multicentre cohort study in South Africa. *Journal of Acquired Immune Deficiency Syndromes* **61**, e50–e58.
- Granich RM, Gilks CF, Dye C, De Cock KM & Williams BG (2009) Universal voluntary HIV testing with immediate antiretroviral therapy as a strategy for elimination of HIV transmission: a mathematical model. *Lancet* **373**, 48–57.
- Gutierrez R (2010) *Competing-risks regression*. StataCorp LP, Boston. Available: [http://www.stata.com/meeting/boston10/boston10\\_gutierrez.pdf](http://www.stata.com/meeting/boston10/boston10_gutierrez.pdf) [Accessed 3 September 2012].
- Herbst AJ, Cooke GS, Barnighausen T, Kanykany A, Tanser F & Newell ML (2009) Adult mortality and antiretroviral treatment roll-out in rural KwaZulu-Natal, South Africa. *Bulletin of the World Health Organization* **87**, 754–762.
- Hontelez JA, De Vlas SJ, Tanser F *et al.* (2011) The impact of the new WHO antiretroviral treatment guidelines on HIV epidemic dynamics and cost in South Africa. *PLoS ONE* **6**, e21919.
- Houlihan CF, Bland RM, Mutevedzi PC *et al.* (2011) Cohort profile: Hlabisa HIV treatment and care programme. *International Journal of Epidemiology* **40**, 318–326.



P. C. Mutevedzi *et al.* **Disengagement from a decentralised ART programme**

- Joint United Nations Programme on HIV/AIDS (UNAIDS) (2012) *Global report: UNAIDS report on the global AIDS epidemic 2012*. UNAIDS, Geneva.
- Kranzer K, Lewis JJ, Ford N *et al.* (2010) Treatment interruption in a primary care antiretroviral therapy program in South Africa: cohort analysis of trends and risk factors. *Journal of Acquired Immune Deficiency Syndromes* 55, e17–e23.
- Lockman S & Sax P (2012) Treatment-for-prevention: clinical considerations. *Current Opinion in HIV and AIDS* 7, 131–139.
- Muhwava W, Hosegood V, Nyirenda M, Herbst K & Newell M (2010) Levels and determinants of migration in rural KwaZulu-Natal, South Africa. *African Population Studies* 24, 259–280.
- Mutevedzi PC, Lessells RJ, Heller T, Barnighausen T, Cooke GS & Newell ML (2010) Scale-up of a decentralized HIV treatment programme in rural KwaZulu-Natal, South Africa: does rapid expansion affect patient outcomes? *Bulletin of the World Health Organization* 88, 593–600.
- Nglazi MD, Lawn SD, Kaplan R *et al.* (2011) Changes in programmatic outcomes during 7 years of scale-up at a community-based antiretroviral treatment service in South Africa. *Journal of Acquired Immune Deficiency Syndromes* 56, e1–e8.
- Olgati A, Barnighausen T & Newell ML (2012) Coming home for faster treatment: antiretroviral treatment and in-migration patterns in rural South Africa [session 126]. *Population Association of America 2012 Annual Meeting*. San Francisco, California.
- Rich ML, Miller AC, Niyigena P *et al.* (2012) Excellent clinical outcomes and high retention in care among adults in a community-based HIV treatment program in rural Rwanda. *Journal of Acquired Immune Deficiency Syndromes* 59, e35–e42.
- Tanser F, Hosegood V, Barnighausen T *et al.* (2008) Cohort Profile: Africa Centre Demographic Information System (ACDIS) and population-based HIV survey. *International Journal of Epidemiology* 37, 956–962.
- Tanser F, Barnighausen T, Grapsa E, Zaidi J & Newell ML (2013) High coverage of ART associated with decline in risk of HIV acquisition in rural KwaZulu-Natal, South Africa. *Science* 339, 966–971.
- Versteeg M & Couper I (2011) Position Paper: Rural Health – Key to a Healthy Nation. Rural Health Advocacy Project, Johannesburg.
- Welaga P, Hosegood V, Weiner R, Hill C, Herbst K & Newell ML (2009) Coming home to die? The association between migration and mortality in rural South Africa *BMC Public Health* 9, 193.
- World Health Organization (2012) *Retention in HIV programmes: defining the challenges and identifying solutions: meeting report*, 13–15 September 2011, Geneva, Switzerland.

**Corresponding Author:** Portia C. Mutevedzi, Africa Centre for Health and Population Studies, PO Box 198, Mtubatuba, KwaZulu-Natal 3935, South Africa. Tel.: +27 35 550 7500; Fax: +27 35 550 7565; E-mail: pmutevedzi@afriacentre.ac.za