

LONDON
SCHOOL of
HYGIENE
& TROPICAL
MEDICINE



LSHTM Research Online

Tremp, AZ; Khater, EI; Dessens, JT; (2008) IMC1b is a putative membrane skeleton protein involved in cell shape, mechanical strength, motility and infectivity of malaria ookinetes. *The Journal of biological chemistry*, 283 (41). pp. 27604-11. ISSN 0021-9258 DOI: <https://doi.org/10.1074/jbc.M801302200>

Downloaded from: <http://researchonline.lshtm.ac.uk/7347/>

DOI: <https://doi.org/10.1074/jbc.M801302200>

Usage Guidelines:

Please refer to usage guidelines at <https://researchonline.lshtm.ac.uk/policies.html> or alternatively contact researchonline@lshtm.ac.uk.

Available under license: <http://creativecommons.org/licenses/by-nc-nd/2.5/>

<https://researchonline.lshtm.ac.uk>

**IMC1b IS A PUTATIVE MEMBRANE SKELETON PROTEIN INVOLVED IN CELL SHAPE,
MECHANICAL STRENGTH, MOTILITY AND INFECTIVITY OF MALARIA OOKINETES**
Annie Z Tremp¹, Emad I Khater², Johannes T Dessens¹

SUPPLEMENTARY MATERIAL

Fig. S1. A genetic tool for generating genetically modified parasites expressing GFP-tagged IMC1b. Step 1: the *imc1b* coding sequence plus its 5'UTR is cloned upstream of, and in-frame with, *egfp* in plasmid pDNR-EGFP. Step2: 3'UTR of *imc1b* is cloned into plasmid pLP-DHFR2. Step 3: The *imc1b*-specific sequences of the above plasmids are combined with the selectable marker cassette in plasmid pLP-IMC1b/EGFP by Cre-*loxP* recombination. *LoxP* sites are indicated by black arrows; noncoding sequences are indicated in white; coding sequences are indicated in light gray; *imc1b*-specific sequences are indicated in dark gray; Amp r: ampicillin resistance gene; Cm r: chloramphenicol resistance gene; SacB: sucrose gene from *Bacillus subtilis*; egfp: enhanced green fluorescent protein; UTR: untranslated region; pro: bacterial promoter sequence.

Fig. S2. Generation and molecular analysis of genetically modified parasite lines IMC1b/GFP (GFP) and IMC1b-KO (KO). **A:** Schematic diagram of wild-type (WT) and genetically modified *imc1b* loci on genomic DNA. Indicated are positions of the *Hind*III restriction sites (H), and expected *Hind*III restriction fragments (horizontal arrows) with sizes shown in kb. The sequences of the probes are indicated by thick lines. **B:** Southern blot analysis of *Hind*III-digested parasite genomic DNA. **C:** Reverse transcription-PCR analysis of ookinete samples. **D:** Western blot analysis of ookinete samples using anti-GFP antibodies. Apparent sizes of the bands are shown in kDa.

Fig. S1

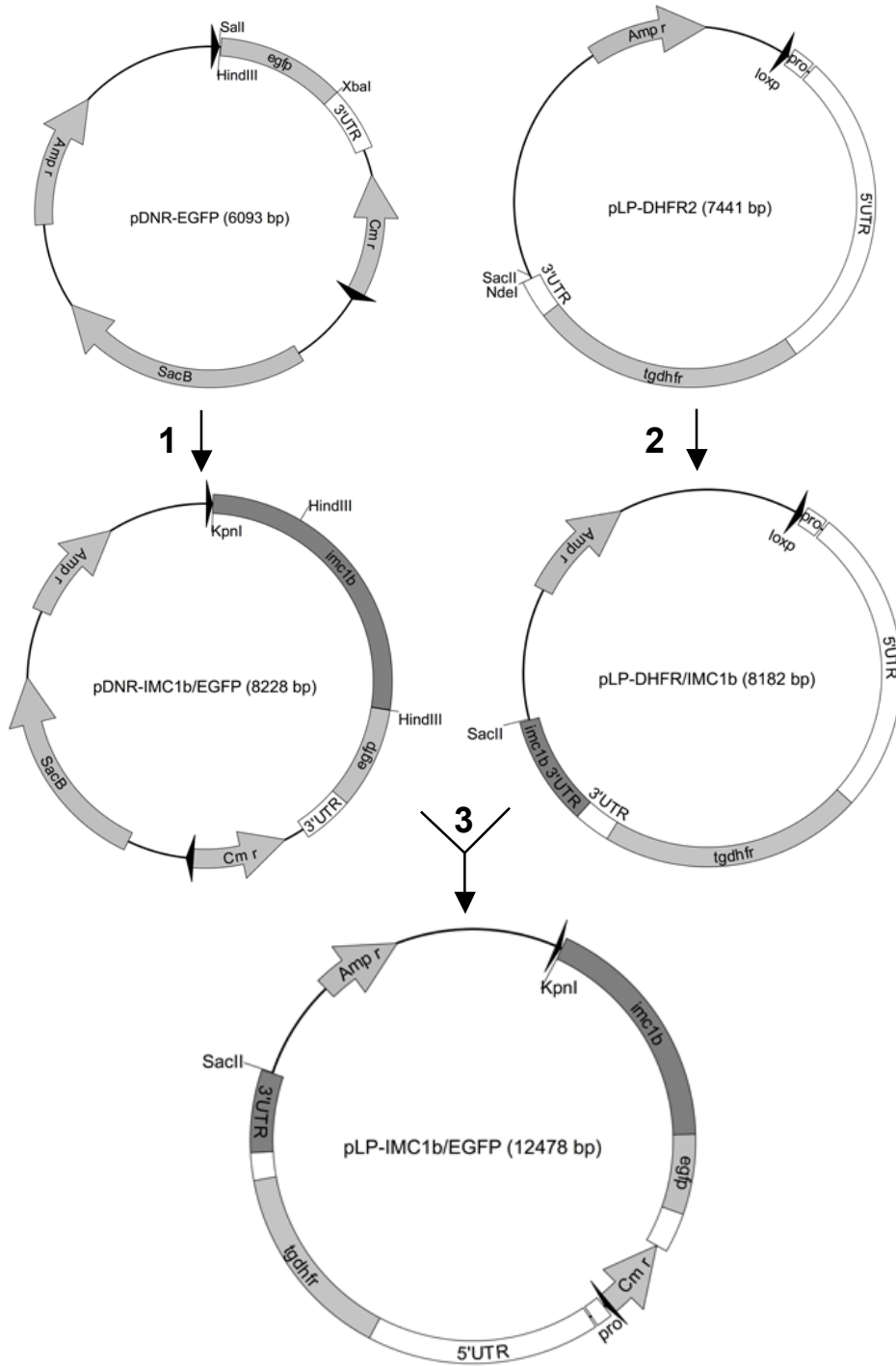
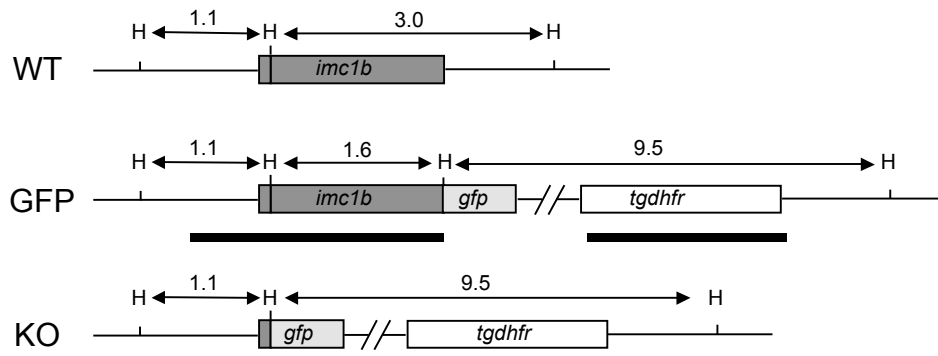
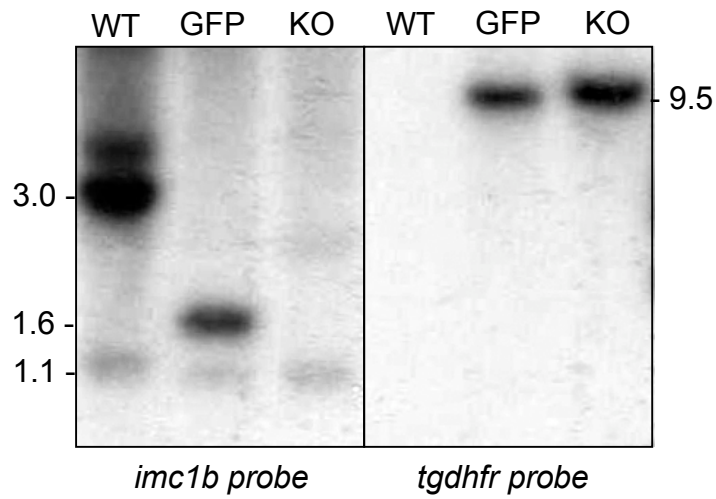


Fig. S2

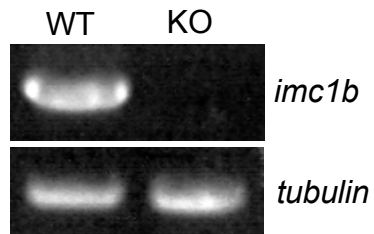
A



B



C



D

