

LONDON
SCHOOL of
HYGIENE
& TROPICAL
MEDICINE



LSHTM Research Online

Craig, P; Dieppe, P; MacIntyre, S; Mitchie, S; Nazareth, I; Petticrew, M; (2008) Developing and evaluating complex interventions: the new Medical Research Council guidance. *BMJ*, 337 (7676). ISSN 0959-8138 DOI: <https://doi.org/10.1136/bmj.a918>

Downloaded from: <http://researchonline.lshtm.ac.uk/6642/>

DOI: <https://doi.org/10.1136/bmj.a918>

Usage Guidelines:

Please refer to usage guidelines at <http://researchonline.lshtm.ac.uk/policies.html> or alternatively contact researchonline@lshtm.ac.uk.

Available under license: <http://creativecommons.org/licenses/by-nc-nd/2.5/>

<https://researchonline.lshtm.ac.uk>

Role of blood pressure in development of early retinopathy in adolescents with type 1 diabetes: prospective cohort study

Patricia Herold Gallego, clinical research fellow in paediatric endocrinology,¹ Maria E Craig, paediatric endocrinologist,^{1,2,3} Stephen Hing, ophthalmologist,¹ Kim C Donaghue, paediatric endocrinologist^{1,2}

¹Institute of Endocrinology and Diabetes, Children's Hospital at Westmead, Locked Bag 4001, Westmead, NSW 2145, Australia

²Discipline of Paediatrics and Child Health, University of Sydney, NSW 2006, Australia

³School of Women's and Children's Health, University of New South Wales, Sydney NSW 2052

Correspondence to: K C Donaghue
KimD@chw.edu.au

Cite this as: *BMJ* 2008;337:a918
doi:10.1136/bmj.a918

ABSTRACT

Objective To examine the relation between blood pressure and the development of early retinopathy in adolescents with childhood onset type 1 diabetes.

Design Prospective cohort study.

Setting Diabetes Complications Assessment Service at the Children's Hospital at Westmead, Sydney, Australia.

Participants 1869 patients with type 1 diabetes (54% female) screened for retinopathy with baseline median age 13.4 (interquartile range 12.0-15.2) years, duration 4.9 (3.1-7.0) years, and albumin excretion rate of 4.4 (3.1-6.8) µg/min plus a subgroup of 1093 patients retinopathy-free at baseline and followed for a median 4.1 (2.4-6.6) years.

Main outcome measures Early background retinopathy; blood pressure.

Results Overall, retinopathy developed in 673 (36%) participants at any time point. In the retinopathy-free group, higher systolic blood pressure (odds ratio 1.01, 95% confidence interval 1.003 to 1.02) and diastolic blood pressure (1.01, 1.002 to 1.03) were predictors of retinopathy, after adjustment for albumin excretion rate (1.27, 1.13 to 1.42), haemoglobin A_{1c} (1.08, 1.02 to 1.15), duration of diabetes (1.16, 1.13 to 1.19), age (1.13, 1.08 to 1.17), and height (0.98, 0.97 to 0.99). In a subgroup of 1025 patients with albumin excretion rate below 7.5 µg/min, the cumulative risk of retinopathy at 10 years' duration of diabetes was higher for those with systolic blood pressure on or above the 90th centile compared with those below the 90th centile (58% v 35%, P=0.03). The risk was also higher for patients with diastolic blood pressure on or above the 90th centile compared with those below the 90th centile (57% v 35%, P=0.005).

Conclusions Both systolic and diastolic blood pressure are predictors of retinopathy and increase the probability of early retinopathy independently of incipient nephropathy in young patients with type 1 diabetes.

INTRODUCTION

Diabetic retinopathy affects most patients with type 1 diabetes after 15 years' duration,^{1,2} although more recent data indicate a reduction in incidence of retinopathy.³⁻⁵ Retinopathy is common in young

patients with diabetes: in a population based study from Australia, 24% of children and adolescents with type 1 diabetes had early background retinopathy after only six years' duration of diabetes,⁶ and retinopathy was present in 27% of Swedish patients after 13 years' duration.⁷

In addition to hyperglycaemia, hypertension has emerged as a risk factor for diabetic retinopathy and its progression in adults.⁸⁻¹⁰ Hyperglycaemia may assert its main effect by impairing autoregulation of retinal perfusion, thereby leaving the eye unprotected from systemic hypertension.¹¹ Indeed, retinal blood flow is higher in patients with diabetic retinopathy than in patients without retinopathy and controls without diabetes.¹² Furthermore, retinal arteriolar dilatation may be the first sign of retinopathy in young patients with type 1 diabetes.¹³

Retinopathy and nephropathy often coexist in patients with diabetes, so elevation of blood pressure may be due to nephropathy rather than essential hypertension. Normotensive patients with type 1 diabetes and nephropathy have worse retinal changes than hypertensive patients with normoalbuminuria,¹⁴ but whether blood pressure acts independently or in association with nephropathy in the development of retinopathy is unclear. Hypertension is an independent predictor of diabetic retinopathy in all clinical studies.¹⁴⁻¹⁷ Moreover, great variability exists in the evidence supporting the role of systolic or diastolic blood pressure in the development of diabetic retinopathy.¹⁸⁻²² Whether the relation is continuous or related only to a threshold effect of high blood pressure is also unclear.

Adolescents with diabetes are an ideal group in which to study the effect of blood pressure on the very early development of retinopathy, because of the absence of coexistent disease, smoking, and treatment with other drugs in most patients. We hypothesised that blood pressure as a continuous variable is a predictor of early development of retinopathy and that this relation is present even in the absence of incipient nephropathy. Hence, we examined the association between systolic and diastolic blood pressure and the development of

early retinopathy in a large cohort of adolescents with type 1 diabetes.

METHODS

This study included 1869 adolescents aged under 15 (54% female) with a clinical diagnosis of type 1 diabetes who had retinal screening at the Diabetes Complications Assessment Service at the Children's Hospital at Westmead (Sydney, New South Wales, Australia) between 1989 and 2007. We excluded patients with secondary causes of diabetes (pancreatectomy, cystic fibrosis, type 2 diabetes mellitus). Participants in this study represent 45% of patients enrolled on the NSW type 1 diabetes register²³; they did not differ from non-participants by age, sex, or urban/rural location. All participants gave written informed consent.

Screening for complications of diabetes

We screened adolescents for complications of diabetes according to established guidelines, which recommended annual assessment beginning five years after diagnosis (or age 11, whichever is earlier) in patients with prepubertal onset of diabetes and two years after diagnosis in patients with pubertal onset.²⁴

We assessed retinopathy by fundal photography with a Topcon Fundus camera (TRC 50-VT, Tokyo Optical Co, Tokyo) after dilatation of the pupils with cyclopentolate 1% and phenylephrine 2.5%. We took non-simultaneous photographic pairs of seven standardised fields in each eye and then viewed them with a Donaldson Stereoviewer, which provided a three dimensional representation of the fundus and enabled microaneurysms to be more easily distinguished from haemorrhages and artefacts. From September 2004 we used the IMAGEnet 2000 Lite system to digitalise images. One experienced paediatric ophthalmologist (SH) graded the photographs according to the early treatment diabetic retinopathy study (ETDRS) adaptation of the modified Airlie House classification of diabetic retinopathy.²⁵ We defined retinopathy as the presence of at least one microaneurysm or one haemorrhage (grade 21). For use as normal controls,

we photographed 36 adolescents without diabetes; the grader was blinded to their non-diabetic status. These controls had no signs of microaneurysm or haemorrhage. We measured regrading agreement for 40 randomly selected participants (80 individual eyes) on two different occasions (1990-4 and 2001); weighted κ values of 0.76 and 0.88 represented excellent agreement.²⁶

We determined albumin excretion rate from three consecutive timed overnight urine specimens. We used polyclonal radioimmunoassay (Pharmacia RIA, Beckman Coulter, Australia) to measure urinary albumin from 1989 to March 2000. From April 2000, the laboratory changed to nephelometric assay using an IMAGE analyser (IMAGE=(0.8734×radioimmunoassay value)−0.501; $r=0.99$). We defined microalbuminuria as albumin excretion rate ≥ 20 and <200 $\mu\text{g}/\text{min}$ in two out of three samples. We defined normoalbuminuria as mean albumin excretion rate <7.5 $\mu\text{g}/\text{min}$ in all urine samples.

At each complications assessment, we assessed glycaemic control by measuring glycated haemoglobin colorimetrically²⁷ before February 1994 and subsequently by haemoglobin A_{1c} with high performance liquid chromatography (Diamat Bio-Rad analyser, Bio-Rad, Hercules, CA; non-diabetic range 4-6%). We converted glycated haemoglobin values to haemoglobin A_{1c} (Diamat=1.9088+0.0043×GHb; $r=0.92$). The interassay coefficients of variation were 1.1% and 1.2% for values of haemoglobin A_{1c} of 5.95% and 9.76%.

Blood pressure and other measurements

We used auscultation with a conventional mercury sphygmomanometer device and appropriate cuff sizes to measure systolic and diastolic blood pressure twice in the seated position after five minutes' rest. We used the right arm for all measurements. We took the onset of the first and fifth Korotkoff phases as systolic and diastolic blood pressure. We report blood pressure measurements in mm Hg or in Z scores after adjustments for age and sex, as recommended in childhood and adolescence.²⁸ Anthropometric data included height (cm), weight (kg), and body mass index (kg/m^2). We determined Z scores for body mass index by using age and sex related reference standards.²⁹

Statistical analysis

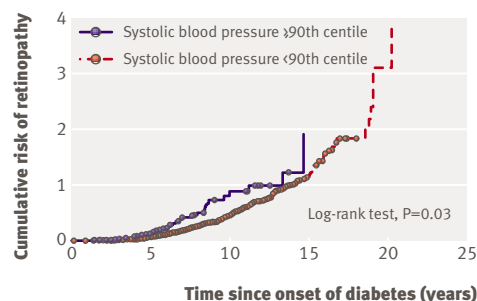
We present descriptive statistics as mean and standard deviation for normally distributed data or median and interquartile range when distributions were skewed. We used the χ^2 test to compare groups for categorical variables. We evaluated differences between independent samples by using Student's *t* test if variables were normally distributed or Mann-Whitney U test for skewed data.

Cox proportional hazard regression and Kaplan-Meier survival curves

We used Cox proportional hazards regression to examine predictors of the first retinopathy event in all

Table 1 | Baseline clinical characteristics of patients with type 1 diabetes mellitus in relation to development of retinopathy during follow-up. Values are number (percentage) or median (interquartile range) unless stated otherwise

Characteristic	No retinopathy (n=1196)	Retinopathy (n=673)	P value
Female	618 (51.7)	384 (57.1)	0.03
Mean (SD) age (years)	13.5 (2.34)	13.4 (2.42)	0.35
Duration of diabetes (years)	4.3 (2.9-6.2)	5.7 (3.4-8.3)	<0.001
Haemoglobin A _{1c} (%)	8.3 (7.6-9.2)	8.6 (7.8-9.5)	<0.001
Albumin excretion rate ($\mu\text{g}/\text{min}$)	4.3 (3.0-6.8)	4.4 (3.3-6.8)	0.18
Systolic blood pressure (mm Hg)	110 (100-120)	110 (105-120)	0.001
Systolic blood pressure Z score	0.19 (-0.64-0.82)	0.23 (-0.25-0.91)	<0.001
Diastolic blood pressure (mm Hg)	65 (60-70)	70 (60-70)	<0.001
Diastolic blood pressure Z score	0.26 (-0.35-0.81)	0.43 (-0.21-0.91)	<0.001
Body mass index (kg/m^2)	21 (18.8-23.8)	20.3 (18.6-22.9)	<0.001
Body mass index (Z score)	0.67 (0.11-1.20)	0.48 (-0.01-1.01)	<0.001
Microalbuminuria	22/1055 (2.1)	13/542 (2.4)	0.72



No remaining:						
≥90th centile	94	58	12	1	0	0
<90th centile	931	648	189	33	1	0

Fig 1 | Cumulative probability of first event of retinopathy for each year since onset of diabetes in patients with albumin excretion rate always below 7.5 µg/min (n=1025). Patients were grouped according to systolic blood pressure below or on/above 90th centile

participants (n=1869), with duration of diabetes as the time variable. Covariates included were systolic and diastolic blood pressure (mm Hg), sex, age, height (cm), haemoglobin A_{1c}, and BMI Z score or BMI >95th centile (used as definition for obesity in adolescents).³⁰ We examined clinically relevant interaction terms (blood pressure*age, blood pressure*sex, blood pressure*age*sex, and age*sex), but they were not significant. We included quadratic terms for systolic and diastolic blood pressure to test for curvature. We report only significant results, expressed as hazard ratio and 95% confidence interval.

To exclude the effect of early elevation of albumin excretion on the development of retinopathy, we used Kaplan-Meier survival curves to estimate the probability of developing the first retinopathy event in participants who had albumin excretion rate <7.5 µg/min (n=1025). We used high-normal cut off for systolic and diastolic blood pressure, defined as blood pressure on or above the 90th centile,²⁸ as factors and used the log-rank test to compare survival times.

Generalised estimating equations

We did longitudinal analysis in participants who were retinopathy-free at baseline and followed prospectively by using generalised estimating equations so that correlations between repeated measures for a given patient could be taken into account.³¹ In this model, we examined different covariates as predictors of the outcome variable, presence or absence of retinopathy at any time. We used systolic and diastolic blood pressures (mm Hg), sex, age, duration of diabetes, haemoglobin A_{1c}, albumin excretion rate (expressed as log albumin excretion rate), height (cm), and Z score for body mass index as covariates. We examined clinically relevant interaction terms (as above), but they were not significant. To test for curvature, a quadratic blood pressure term was included in the analysis. We report significant results as odds ratio and 95% confidence interval.

RESULTS

Clinical characteristics

For the whole group (n=1869, 54% female), median age was 13.4 years (interquartile range 12.0-15.2), duration of diabetes was 4.9 (3.1-7.0) years, albumin excretion rate was 4.4 (3.1-6.8) µg/min, and haemoglobin A_{1c} was 8.4% (7.7-9.3%) at first assessment. Overall, 673 (36%) participants developed retinopathy at any time during the follow-up. Moderate to severe non-proliferative retinopathy developed in 35 participants, and only one patient developed proliferative retinopathy during the study.

Table 1 shows baseline clinical characteristics for the total cohort stratified by retinal status. We compared participants who never developed retinopathy with those who developed retinopathy at any stage during the follow-up and found no difference in baseline age, albumin excretion rate, or prevalence of microalbuminuria. However, systolic blood pressure, diastolic blood pressure, duration of diabetes, and haemoglobin A_{1c} were higher in patients who developed retinopathy.

In all, 1231 (66%) participants had more than one visit, with median follow-up of 4.1 (3.1-7.2) years and a median number of visits of 3 (2-5). The incidence of retinopathy was 14.5 per 100 person years of follow-up. In this group, 138 participants had retinopathy at baseline, of whom 50 (36%) regressed, 56 (41%) were unchanged, and 32 (23%) progressed during follow-up.

Cox proportional hazard regression

In Cox proportional hazard regression (n=1869), systolic blood pressure, female sex, haemoglobin A_{1c}, age, and body mass index above 95th centile were significantly associated with a higher cumulative risk of retinopathy (table 2). The quadratic term for blood pressure was not significant, suggesting a linear effect.

Among participants with albumin excretion rate <7.5 µg/min (n=1025), the cumulative risk of retinopathy at 10 years' duration of diabetes was higher for those with systolic blood pressure on or above the 90th centile than for those below the 90th centile (58% v 35%, P=0.03) (fig 1). Similarly, diastolic blood pressure on or above the 90th centile conferred a higher risk compared with those below the 90th centile (57% v 35%, p=0.005) (fig 2).

Table 2 | Results of Cox proportional hazards regression for development of first event of retinopathy, with duration of diabetes as time variable, in young patients with type 1 diabetes mellitus (n=1869)

Covariates	Hazard ratio (95% CI)	P value
Systolic blood pressure (mm Hg)	1.02 (1.01 to 1.03)	<0.001
Female sex	1.29 (1.10 to 1.51)	0.002
Age (years)	0.83 (0.81 to 0.85)	<0.001
Haemoglobin A _{1c}	1.06 (1.01 to 1.12)	0.02
Body mass index >95th centile	1.34 (1.01 to 1.78)	0.04

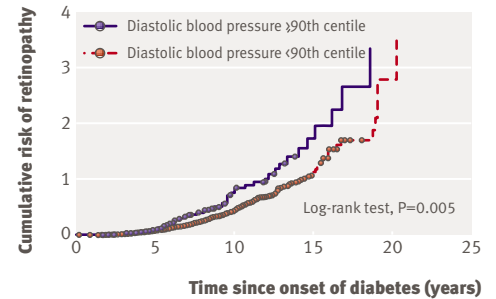
Longitudinal analysis

By using generalised estimating equations, we analysed two subgroups of participants. The first group included all participants with more than one visit who were retinopathy-free at baseline (n=1093). Retinopathy was significantly associated with higher systolic and diastolic blood pressure. Age, duration of diabetes, haemoglobin A_{1c}, height, and log albumin excretion rate were also significant predictors of retinopathy (model 1, table 3).

The second group consisted of 594 participants with more than one visit who were retinopathy-free at baseline and had albumin excretion rate consistently <7.5 µg/min. Results showed that diastolic blood pressure, in addition to age, duration of diabetes, and haemoglobin A_{1c}, predicted retinopathy (model 2, table 3). In both groups, quadratic terms for systolic and diastolic blood pressure were not significant, suggesting a linear rather than a threshold effect of blood pressure as a predictor for retinopathy.

DISCUSSION

This longitudinal cohort study showed that higher blood pressure contributes to the early development of retinopathy in adolescents with type 1 diabetes, independent of other known risk factors. Both systolic and diastolic blood pressure contributed to risk of retinopathy. Not only was the effect independent of glycaemic control but it was independent of early elevation of albumin excretion. This supports the hypothesis that blood pressure acts independently, rather than by association with nephropathy, in the development of retinopathy. In addition, these results suggest that the effect of blood pressure as a predictor for retinopathy is linear rather than a threshold effect. In the longitudinal cohort, a 10 mm Hg higher systolic blood pressure was associated with a 3-20% higher risk of retinopathy; a 10 mm Hg higher diastolic blood



No remaining:						
≥90th centile	132	94	21	4	0	0
<90th centile	893	615	181	30	1	0

Fig 2 | Cumulative probability of first event of retinopathy for each year since onset of diabetes in patients with albumin excretion rate always below 7.5 µg/min (n=1025). Patients were grouped according to diastolic blood pressure below or on/above 90th centile

pressure increased the risk for retinopathy by 2-30% after adjustments for age, sex, and albumin excretion rate. An increase of 1% in haemoglobin A_{1c} was associated with a 2-15% higher risk of retinopathy, and an extra one year's duration of diabetes was associated with a 13-19% greater risk of retinopathy.

Prevalence of retinopathy

Overall, we reported that 36% of these patients developed retinopathy. Some investigators have reported a lower prevalence of retinopathy in the young population than we saw in our study. Divergent results may be explained by differences in age, sample size, study design, and methods of screening for retinopathy. Kernell and colleagues reported a prevalence of retinopathy of 14.5% in adolescents studied cross sectionally, but retinopathy was assessed by the less sensitive three field photography instead of seven fundal photography, the gold standard tool for retinopathy screening.³² Nordwall and colleagues reported a prevalence of retinopathy of 27% in 80 children and adolescents with type 1 diabetes mellitus aged 7-22 years despite intensive management over a follow-up of 13 years.⁷

Systolic and diastolic blood pressure and retinopathy

The strength of our study is the large cohort of young patients followed for a median of four years, enabling exploratory analyses of risk factors over time. The sample consisted of adolescents who were not on any other drugs except insulin, thereby reducing the effect of comorbidities on risk of retinopathy. Our findings extend the reports of the Wisconsin epidemiologic study of diabetic retinopathy, in which higher baseline systolic blood pressure was associated with increased risk of retinopathy 10 years later in the young onset diabetes group (<30 years) and higher diastolic blood pressure was associated with progression of retinopathy at 14 years.^{9,33} Macroproteinuria at baseline was not significant in their models, but this is a late measure of renal disease.

Table 3 | Factors associated with occurrence of retinopathy in adolescents with type 1 diabetes mellitus who were retinopathy-free at baseline: longitudinal analysis using generalised estimating equations (n=1093)

Covariates	Odds ratio (95% CI)	P value
Model 1*		
Systolic blood pressure (mm Hg)	1.01 (1.003 to 1.02)	0.008
Diastolic blood pressure (mm Hg)	1.01 (1.002 to 1.03)	0.02
Age (years)	1.13 (1.08 to 1.17)	<0.001
Duration (years)	1.16 (1.13 to 1.19)	<0.001
Haemoglobin A _{1c}	1.08 (1.02 to 1.15)	0.01
Log albumin excretion rate	1.27 (1.13 to 1.42)	<0.001
Height (cm)	0.98 (0.97 to 0.99)	<0.001
Model 2†		
Diastolic blood pressure (mm Hg)	1.02 (1.01 to 1.04)	0.004
Age (years)	1.12 (1.06 to 1.18)	<0.001
Duration (years)	1.14 (1.09 to 1.18)	<0.001
Haemoglobin A _{1c}	1.14 (1.03 to 1.26)	0.009

*Included systolic and diastolic blood pressure measurements from patients who were retinopathy-free at baseline (n=1093) along with other covariates.

†Included systolic and diastolic blood pressure measurements from patients who were retinopathy-free at baseline and had albumin excretion rate consistently below 7.5 µg/min throughout follow-up (n=594).

WHAT IS ALREADY KNOWN ON THIS TOPIC

No longitudinal data exist on the effect of blood pressure on the development of retinopathy in children and adolescents with type 1 diabetes

In adults with diabetes, hypertension has emerged as a risk factor for diabetic retinopathy and its progression

WHAT THIS STUDY ADDS

Higher systolic and diastolic blood pressure contribute to the early development of diabetic retinopathy independent of glycaemic control, duration of diabetes, and albumin excretion

Blood pressure had a continuous effect rather than a threshold effect on risk of retinopathy, suggesting that lower blood pressure protects the eye in diabetes

This relation has potential implications for blood pressure lowering treatment for the prevention of diabetic retinopathy in adolescents with type 1 diabetes

A potential weakness of the study is the use of auscultation without a random zero machine. However, the physicians taking the blood pressure were not aware of the retinal status of the patients.

Blood pressure as a predictor of retinopathy in the absence of incipient nephropathy

Our study has shown that higher diastolic blood pressure was still an independent predictor of retinopathy in adolescents with albumin excretion rate consistently below 7.5 µg/min, an earlier marker of incipient renal disease. Conversely, albumin excretion rate also predicted development of retinopathy in the entire cohort. Although antihypertensive agents prevent the progression from normoalbuminuria to microalbuminuria in patients with and without hypertension,³⁴ whether treatment of normotensive young patients with type 1 diabetes and normoalbuminuria will influence retinopathy risk is not known.

Hypertension has been implicated in the development of diabetic retinopathy, on the basis of data from observational studies, which have not always controlled for other contributing factors. Interventional studies with angiotensin converting enzyme inhibitors have shown a reduction in progression of retinopathy in adults with type 1 diabetes,³⁵ in the absence of hypertension, and in type 2 diabetes.^{36,37} Although this suggests that lowering of high blood pressure influences the risk of retinopathy, these drugs may have benefits on the eye independent of their anti-hypertensive properties, possibly by affecting local production of angiotensin converting enzyme by retinal vascular endothelial cells.³⁸

The definition of hypertension is arbitrary. In adults with diabetes, lower targets for intervention have been recommended than in the general population,³⁹ and intensive blood pressure control in normotensive patients with diabetes may slow the progression of nephropathy and retinopathy.^{34,40} However, the ADVANCE study found no significant reduction in

retinopathy at lower levels of blood pressure elevation.³¹

Conclusions

This study shows that a continuous relation exists between blood pressure and risk of retinopathy. The clinical care of adolescents with type 1 diabetes is often shared between specialists and general practitioners. These findings highlight the importance of close blood pressure monitoring by all professionals involved in the management of adolescents with diabetes, regardless of urinary albumin excretion and glycaemic control, and indicate that lowering blood pressure, even in patients without hypertension or microalbuminuria, may improve retinal outcomes in diabetes. However, evidence for this proposal is lacking and interventional trials are needed to test the risks and benefits of lowering blood pressure in children and adolescents with type 1 diabetes.

Contributors: PHG was involved in statistical analysis, data interpretation, and drafting of the manuscript. MEC was involved in data collection, statistical analysis, data interpretation, and revision of the manuscript. SH was involved in data collection, including retinal photography assessment. KCD was involved in the conception and design of the study, collection and interpretation of data, and writing and revision of the manuscript. KCD is the guarantor.

Competing interests: None declared.

Ethical approval: Ethics committee of Children's Hospital at Westmead, Sydney.

Provenance and peer review: Not commissioned; externally peer reviewed.

- 1 Klein R, Klein BE, Moss SE, Davis MD, DeMets DL. The Wisconsin epidemiologic study of diabetic retinopathy: II. Prevalence and risk of diabetic retinopathy when age at diagnosis is less than 30 years. *Arch Ophthalmol* 1984;102:520-6.
- 2 Skriverhaug T, Fosmark DS, Stene LC, Bangstad HJ, Sandvik L, Hanssen KF, et al. Low cumulative incidence of proliferative retinopathy in childhood-onset type 1 diabetes: a 24-year follow-up study. *Diabetologia* 2006;49:2281-90.
- 3 Nordwall M, Bojestig M, Amqvist HJ, Ludvigsson J. Declining incidence of severe retinopathy and persisting decrease of nephropathy in an unselected population of Type 1 diabetes—the Linköping diabetes complications study. *Diabetologia* 2004;47:1266-72.
- 4 Mohsin F, Craig ME, Cusumano J, Chan AK, Hing S, Lee JW, et al. Discordant trends in microvascular complications in adolescents with type 1 diabetes from 1990 to 2002. *Diabetes Care* 2005;28:1974-80.
- 5 Lecaie T, Palta M, Zhang H, Allen C, Klein R, D'Alessio D. Lower-than-expected prevalence and severity of retinopathy in an incident cohort followed during the first 4-14 years of type 1 diabetes: the Wisconsin diabetes registry study. *Am J Epidemiol* 2006;164:143-50.
- 6 Donaghue KC, Craig ME, Chan AK, Fairchild JM, Cusumano JM, Verge CF, et al. Prevalence of diabetes complications 6 years after diagnosis in an incident cohort of childhood diabetes. *Diabet Med* 2005;22:711-8.
- 7 Nordwall M, Hyllienmark L, Ludvigsson J. Early diabetic complications in a population of young patients with type 1 diabetes mellitus despite intensive treatment. *J Pediatr Endocrinol* 2006;19:45-54.
- 8 Agardh CD, Agardh E, Torffvit O. The association between retinopathy, nephropathy, cardiovascular disease and long-term metabolic control in type 1 diabetes mellitus: a 5 year follow-up study of 442 adult patients in routine care. *Diabetes Res Clin Pract* 1997;35:113-21.
- 9 Klein R, Klein BE, Moss SE, Cruickshanks KJ. The Wisconsin epidemiologic study of diabetic retinopathy: XVII. The 14-year incidence and progression of diabetic retinopathy and associated risk factors in type 1 diabetes. *Ophthalmology* 1998;105:1801-15.
- 10 Marshall G, Garg SK, Jackson WE, Holmes DL, Chase HP. Factors influencing the onset and progression of diabetic retinopathy in subjects with insulin-dependent diabetes mellitus. *Ophthalmology* 1993;100:1133-9.
- 11 Rassam SM, Patel V, Kohner EM. The effect of experimental hypertension on retinal vascular autoregulation in humans: a mechanism for the progression of diabetic retinopathy. *Exp Physiol* 1995;80:53-68.

- 12 Patel V, Rassam S, Newsom R, Wiek J, Kohner E. Retinal blood flow in diabetic retinopathy. *BMJ* 1992;305:678-83.
- 13 Alibrahim E, Donaghue KC, Rogers S, Hing S, Jenkins AJ, Chan A, et al. Retinal vascular caliber and risk of retinopathy in young patients with type 1 diabetes. *Ophthalmology* 2006;113:1499-503.
- 14 Norgaard K, Feldt-Rasmussen B, Deckert T. Is hypertension a major independent risk factor for retinopathy in type 1 diabetes? *Diabet Med* 1991;8:334-7.
- 15 Guillausseau PJ, Massin P, Charles MA, Allaguy H, Guvenli Z, Virally M, et al. Glycaemic control and development of retinopathy in type 2 diabetes mellitus: a longitudinal study. *Diabet Med* 1998;15:151-5. [Correction in *Diabet Med* 1998;15:709.]
- 16 Larsson LI, Alm A, Bergenheim T, Lithner F, Bergstrom R. Retinopathy in diabetic patients aged 15-50 years in the county of Umea, Sweden. *Acta Ophthalmol Scand* 1999;77:430-6.
- 17 Taylor RH, Jones HS, Dodson PM, Hamilton AP, Kritzing EE. Diabetic eye disease: a natural history study. *Eye* 1997;11:547-53.
- 18 Cignarelli M, De Cicco ML, Damato A, Paternostro A, Pagliarini S, Santoro S, et al. High systolic blood pressure increases prevalence and severity of retinopathy in NIDDM patients. *Diabetes Care* 1992;15:1002-8.
- 19 Roy MS. Diabetic retinopathy in African Americans with type 1 diabetes: the New Jersey 725: II. Risk factors. *Arch Ophthalmol* 2000;118:105-15.
- 20 Wan Nazaimoon WM, Letchuman R, Noraini N, Ropilah AR, Zainal M, Ismail IS, et al. Systolic hypertension and duration of diabetes mellitus are important determinants of retinopathy and microalbuminuria in young diabetics. *Diabetes Res Clin Pract* 1999;46:213-21.
- 21 Estacio RO, McFarling E, Biggerstaff S, Jeffers BW, Johnson D, Schrier RW. Overt albuminuria predicts diabetic retinopathy in Hispanics with NIDDM. *Am J Kidney Dis* 1998;31:947-53.
- 22 Klein R, Klein BE, Moss SE, Davis MD, DeMets DL. The Wisconsin epidemiologic study of diabetic retinopathy: III. Prevalence and risk of diabetic retinopathy when age at diagnosis is 30 or more years. *Arch Ophthalmol* 1984;102:527-32.
- 23 Taplin CE, Craig ME, Lloyd M, Taylor C, Crock P, Silink M, et al. The rising incidence of childhood type 1 diabetes in New South Wales, 1990-2002. *Med J Aust* 2005;183:243-6.
- 24 International Society for Pediatric and Adolescent Diabetes. *ISPAD consensus guidelines for the management of type 1 diabetes mellitus in children and adolescents*. Berlin: ISPAD, 2000:95-101.
- 25 Early Treatment Diabetic Retinopathy Study Research Group. Grading diabetic retinopathy from stereoscopic color fundus photographs—an extension of the modified Airlie House classification. (ETDRS report number 10.) *Ophthalmology* 1991;98(suppl):786-806.
- 26 Fleiss JL. *Statistical methods for rates and proportions*. 2nd ed. New York: Wiley, 1981.
- 27 Eross J, Kreutzmann D, Jimenez M, Keen R, Rogers S, Cowell C, et al. Colorimetric measurement of glycosylated protein in whole blood, red blood cells, plasma and dried blood. *Ann Clin Biochem* 1984;21:477-83.
- 28 National High Blood Pressure Education Program Working Group on Hypertension Control in Children and Adolescents. Update on the 1987 task force report on high blood pressure in children and adolescents: a working group report from the national high blood pressure education program. *Pediatrics* 1996;98:649-58.
- 29 Centers for Disease Control National Center for Health Statistics. CDC growth charts, United States. 2000. www.cdc.gov/nchs/about/major/nhanes/growthcharts/datafiles.htm.
- 30 Cole TJ, Bellizzi MC, Flegal KM, Dietz WH. Establishing a standard definition for child overweight and obesity worldwide: international survey. *BMJ* 2000;320:1240-3.
- 31 Zeger SL, Liang KY, Albert PS. Models for longitudinal data: a generalized estimating equation approach. *Biometrics* 1988;44:1049-60. [Correction in *Biometrics* 1989;45:347.]
- 32 Kernell A, Dedorsson I, Johansson B, Wickstrom CP, Ludvigsson J, Tuvemo T, et al. Prevalence of diabetic retinopathy in children and adolescents with IDDM: a population-based multicentre study. *Diabetologia* 1997;40:307-10.
- 33 Klein BE, Klein R, Moss SE, Palta M. A cohort study of the relationship of diabetic retinopathy to blood pressure. *Arch Ophthalmol* 1995;113:601-6. [Correction in *Arch Ophthalmol* 1996;114:109.]
- 34 Strippoli GF, Craig M, Schena FP, Craig JC. Antihypertensive agents for primary prevention of diabetic nephropathy. *J Am Soc Nephrol* 2005;16:3081-91.
- 35 Chaturvedi N, Sjolie AK, Stephenson JM, Abrahamian H, Keipes M, Castellarin A, et al. Effect of lisinopril on progression of retinopathy in normotensive people with type 1 diabetes: EURODIAB controlled trial of lisinopril in insulin-dependent diabetes mellitus. *Lancet* 1998;351:28-31.
- 36 Matthews DR, Stratton IM, Aldington SJ, Holman RR, Kohner EM, UKPDS Group. Risks of progression of retinopathy and vision loss related to tight blood pressure control in type 2 diabetes mellitus: UKPDS 69. *Arch Ophthalmol* 2004;122:1631-40.
- 37 Patel A, Group AC, MacMahon S, Chalmers J, Neal B, Woodward M, et al. Effects of a fixed combination of perindopril and indapamide on macrovascular and microvascular outcomes in patients with type 2 diabetes mellitus (the ADVANCE trial): a randomised controlled trial. *Lancet* 2007;370:829-40.
- 38 Danser AH, Derkx FH, Admiraal PJ, Deinum J, de Jong PT, Schalekamp MA. Angiotensin levels in the eye. *Investigative Ophthalmol Vis Sci* 1994;35:1008-18.
- 39 American Diabetes Association. Treatment of hypertension in adults with diabetes. *Diabetes Care* 2002;25:199-201.
- 40 Schrier RW, Estacio RO, Esler A, Mehler P. Effects of aggressive blood pressure control in normotensive type 2 diabetic patients on albuminuria, retinopathy and strokes. *Kidney Int* 2002;61:1086-97.

Accepted: 9 June 2008