

Keywords: localised prostate cancer; prognostic factors; Ki-67; needle biopsy

Prognostic value of Ki-67 for prostate cancer death in a conservatively managed cohort

G Fisher¹, Z H Yang¹, S Kudahetti², H Møller³, P Scardino⁴, J Cuzick¹, D M Berney^{*,2} and on behalf of the Transatlantic Prostate Group

¹Centre for Cancer Prevention, Wolfson Institute of Preventive Medicine, Queen Mary University of London, London EC1M 6BQ, UK; ²Department of Molecular Oncology, Barts Cancer Centre, Barts and the London, School of Medicine and Dentistry, Queen Mary University of London, Charterhouse Square, London, EC1M 6BQ, UK; ³King's College London, Thames Cancer Registry, London, UK and ⁴Department of Urology, Memorial Sloan-Kettering Cancer Center, New York, NY, USA

Background: Standard clinical parameters cannot accurately differentiate indolent from aggressive prostate cancer. Our previous work showed that immunohistochemical (IHC) Ki-67 improved prediction of prostate cancer death in a cohort of conservatively treated clinically localised prostate cancers diagnosed by transurethral resection of the prostate (TURP). Here, we present results in a more clinically relevant needle biopsy cohort.

Methods: Biopsy specimens were microarrayed. The percentage of Ki-67 positively stained malignant cells per core was measured and the maximum score per individual used in analysis of time to death from prostate cancer using a Cox proportional hazards model.

Results: In univariate analysis ($n = 293$), the hazard ratio (HR) (95% confidence intervals) for dichotomous Ki-67 ($\leq 10\%$, $> 10\%$) was 3.42 (1.76, 6.62) χ^2 (1 df) = 9.8, $P = 0.002$. In multivariate analysis, Ki-67 added significant predictive information to that provided by Gleason score and prostate-specific antigen (HR = 2.78 (1.42, 5.46), χ^2 (1 df) = 7.0, $P = 0.008$).

Conclusion: The IHC Ki-67 scoring on prostate needle biopsies is practicable and yielded significant prognostic information. It was less informative than in the previous TURP cohort where tumour samples were larger and more comprehensive, but in more contemporary cohorts with larger numbers of biopsies per patient, Ki-67 may prove a more powerful biomarker.

The optimal treatment for organ confined prostate cancer remains a challenge for health professionals worldwide. While potentially curative treatments exist, they are associated with substantial morbidity and the five-fold difference between prostate cancer incidence and mortality in many developed countries indicates that there is substantial over treatment of indolent neoplasms (Etzioni *et al*, 2002). As serum prostate-specific antigen (PSA) testing becomes more common, the incidence of prostate cancer will continue to rise further, and a greater proportion of tumours will be indolent and potentially manageable by active surveillance.

The differentiation of indolent from aggressive prostate cancer was recently ranked top priority for research, by a consultation conducted by the James Lind Alliance (Lophatananon *et al*, 2011).

Management of the disease relies largely on standard clinical factors including Gleason score, PSA level, clinical stage and measures of tumour extent on biopsy and imaging, but these are clearly inadequate and better markers of prognosis are needed.

Molecular biomarkers in tissue, urine, or serum have proven difficult to validate. Many biomarkers have shown association with Gleason score and some have also been associated with outcome after radical treatment (D'Amico *et al*, 2008; Vergis *et al*, 2010; Kristiansen, 2012), but comparatively little work has been done on cohorts of prostate cancer managed conservatively, especially when the diagnosis was made by a needle biopsy where tissue is limited.

The most promising immunohistochemical (IHC) biomarker identified so far is Ki-67, a marker of cell proliferation. As the

*Correspondence: Professor DM Berney; E-mail: d.berney@bartshealth.nhs.uk

Received 6 September 2012; revised 4 December 2012; accepted 10 December 2012; published online 17 January 2013

© 2013 Cancer Research UK. All rights reserved 0007–0920/13

grading system in prostate cancer (unlike many other cancers) does not consider the proliferation rate of the cells, it is possible that measuring the cell proliferation rate in prostate tumours could yield additional prognostic information. Ki-67 (1% cutoff) was shown to be useful in predicting time to radical treatment, in a biopsy tissue microarray study of 60 patients on active surveillance (Jhavar *et al*, 2009) and a range of studies in cohorts with larger radical prostatectomy (RP) or transurethral resection of the prostate (TURP) diagnostic samples, reviewed by Kristiansen (2012), have shown that Ki-67 IHC measurements can significantly predict prostate cancer outcome. There has been little consensus in the choice of Ki-67 cutoff points, and predictions of progression, in terms of biochemical recurrence following radical treatments, have been based on a wide range from 2.4% to 26%, while a range from 3% to 10.3% has shown the prognostic significance of Ki-67 in both overall and disease-specific survival. Detailed results are provided in Supplementary Table 1. There is evidence in the existing literature (Stattin *et al*, 1997; Cowen *et al*, 2002; Rubin *et al*, 2002; Sebo *et al*, 2002; Pollack *et al*, 2003; Li *et al*, 2004; Pollack *et al*, 2004; Rubio *et al*, 2005; Gunia *et al*, 2008; Laitinen, 2008; Berney *et al*, 2009; Khor *et al*, 2009; Zellweger *et al*, 2009) that Ki-67 can improve predictions of prostate cancer outcome based on standard factors alone, in men treated conservatively or radically. Multivariate HRs for prostate cancer-specific survival and prostate cancer recurrence are shown in Figure 1A and B, respectively, and additional information is summarised in Table 1.

Although molecular mRNA markers of cell proliferation gene expression (Cuzick *et al*, 2012) have shown promise, they are more technically demanding and expensive to perform.

Our previous work, on the Trans Atlantic Prostate Group cohort of conservatively managed prostate cancers diagnosed by TURP showed that Ki-67 was an independent prognostically significant marker when PSA, Gleason score, and tumour extent were also considered (Berney *et al*, 2009). However, since TURP is no longer a common means of diagnosis of prostate cancer, any practicable test would need to be useful on needle biopsy specimens. Here, we report results of such an investigation.

MATERIALS AND METHODS

Patients. Potential cases of prostate cancer were identified from six cancer registries in Great Britain. Case notes from collaborating hospitals were reviewed, and full details of these patients have been previously reported (Cuzick *et al*, 2006). Men were included in this study if they had clinically localised prostate cancer, diagnosed by use of needle biopsy between 1990 and 1996 (inclusively), were younger than 76 years at the time of diagnosis, and had a baseline PSA measurement. Patients with PSA values greater than 100 ng ml⁻¹ were excluded as likely to have metastatic disease. Patients treated with RP or radiation therapy, or who died or showed evidence of metastatic disease within 6 months of

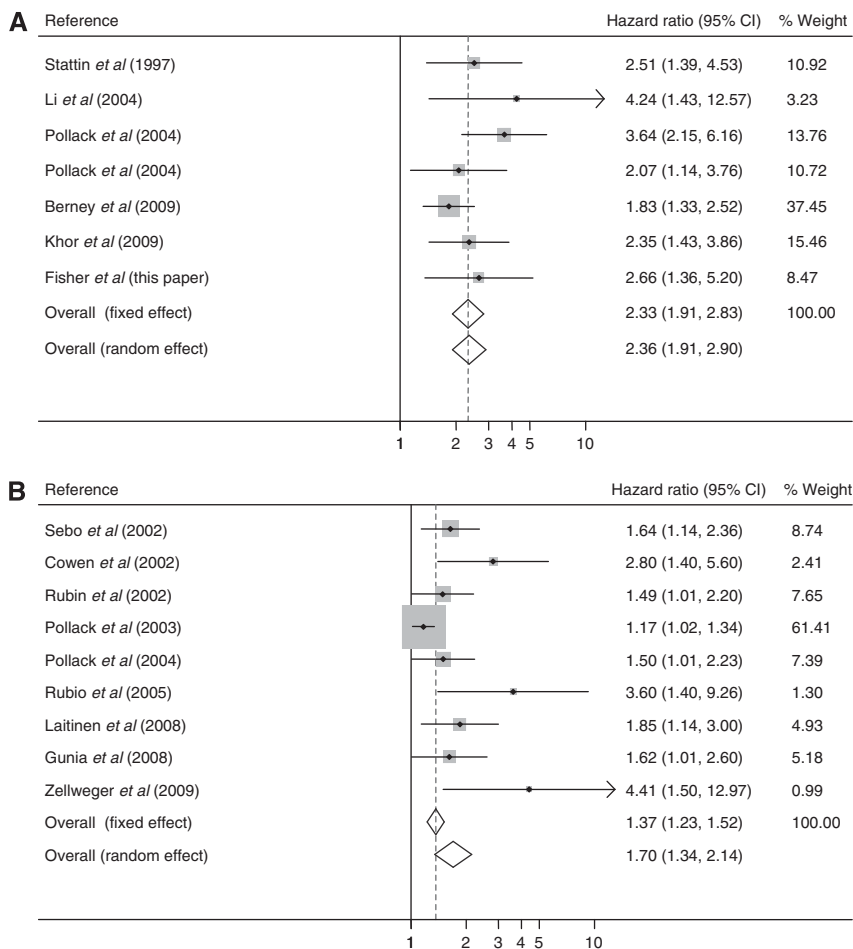


Figure 1. Hazard ratio for Ki-67 in multivariate analysis after adjustment for covariates, in the existing literature, for (A) prostate cancer-specific survival (I-squared = 7.5%, P = 0.371) and (B) prostate cancer recurrence (I-squared = 61.9%, P = 0.007). The area of the box is proportional to the amount of information available, and the horizontal bars represent 95% confidence intervals.

Table 1. Published reports of the prognostic value of Ki-67 in multivariate analyses with Hazard ratio's (HR) after adjustment for covariates

Reference	End point	Cohort type	Cohort size	Cutoff (%)	P-value	HR (95% CIs)	Covariates
Stattin <i>et al</i> (1997)	PCS	TURP, WW	125	3	0.0023	2.51 (1.39, 4.53)	G T A
Li <i>et al</i> (2004)	PCS	RX	108	3.5	0.009	4.24 (1.43, 12.57)	G T Tx
Pollack <i>et al</i> (2004)	PCS	RX	496	CONT	0.0001	3.64 (2.15, 6.16)	G T P Tx
Pollack <i>et al</i> (2004)	PCS	RX	496	7.1	0.0174	2.07 (1.14, 3.76)	G T P Tx
Berney <i>et al</i> (2009)	PCS	TURP, WW	685	5	0.0003	1.83 (1.33, 2.53)	G P Px
Khor <i>et al</i> (2009)	PCS	RX	637	11.3	0.0007	2.35 (1.43, 3.85)	G T A Tx
Fisher <i>et al</i> (this paper)	PCS	BX, WW	293	10	0.011	2.66 (1.36, 5.2)	G P
Sebo <i>et al</i> (2002)	PCR	RP	454	CONT	0.008	1.64 (1.14, 2.36)	G Px
Cowen <i>et al</i> (2002)	PCR	RX	106	3.5	0.003	2.8 (1.4, 5.4)	G P T
Rubin <i>et al</i> (2002)	PCR	RP	88	CONT	0.047	1.49 (1.01, 2.2)	G P Px
Pollack <i>et al</i> (2003)	PCR	RX	64	CONT	0.04	1.17 (1.02, 1.35)	G P T bax/bcl-2
Pollack <i>et al</i> (2004)	PCR	RX	496	CONT	0.045	1.5 (1.01, 2.23)	G P T Tx
Rubio <i>et al</i> (2005)	PCR	RP	91	5	0.006	3.6 (1.4, 8.9)	G
Laitinen <i>et al</i> (2008)	PCR	RP	181	16	0.013	1.85 (1.14, 3.01)	G P T EZH2 MCM7
Gunia <i>et al</i> (2008)	PCR	RP	528	5	0.048	1.62 (1.01, 2.61)	G P T Px
Zellweger <i>et al</i> (2009)	PCR	BX, RP	279	10	0.008	4.41 (1.5, 13.2)	G

Abbreviations: A = age; BX = needle biopsy; CI = confidence interval; CONT = continuous; G = Gleason grade; P = prostate-specific antigen; PCS = prostate cancer-specific survival; PCR = prostate cancer recurrence; Px = pathological features; RP = radical prostatectomy; RX = radiotherapy; T = clinical stage; Tx = treatment; TURP = transurethral resection of the prostate; WW = watchful waiting.

diagnosis were also excluded, as were men who had hormone therapy before the diagnostic biopsy.

Original histological specimens from the diagnostic procedure were requested, collected, and centrally reviewed by a panel of expert urological pathologists to confirm the diagnosis and to reassign Gleason scores by use of a contemporary and consistent interpretation of the Gleason scoring system (Epstein *et al*, 2005). Follow-up was through the cancer registries and the last update of vital status took place in December 2009. Deaths were divided into those from prostate cancer and those from other causes, according to WHO standardised criteria (WHO, 2010). National ethics approval was obtained from the Northern Multicentre Research Ethics Committee, followed by local ethics committee approval at each of the collaborating hospitals.

Ki-67 immunohistochemistry. Diagnostic formalin-fixed paraffin-embedded (FFPE) needle biopsy tissue blocks and slides (where available) were requested. Areas of cancer were marked and those with adequate tumour tissue available were microarrayed, by excising the tumour tissue with spaced blades and positioning it in a preformed donor block, as given in detail elsewhere (McCarthy *et al*, 2011).

Tissue microarray (TMA) sections were immunoassayed for Ki-67 using MIB-1 antibody, DAKO, Carpinteria, CA, USA, as detailed previously (Berney *et al*, 2009). Briefly, cells were scored in a semiquantitative manner, by an expert prostatic pathologist with normal tonsil as a positive control, and the percentage of positive cells was estimated as the proportion of Ki-67 stained malignant cells, in a manner similar to that used in routine pathology departments for the assessment of proliferation index in other organs. All nuclear immunostaining was recorded as positive and was clearly either strongly positive or negative. Where multiple cancer cores per patient were stained, the maximum value percentage staining (Ki-67 score) was used for analysis. These were practical decisions to make the technique robust for any pathology laboratory with experience in immunohistochemistry and allow results to be directly comparable to our previous work.

Statistical analysis. The primary end point was time to death from prostate cancer, which was analysed using a Cox proportional hazards model. Observations were censored on the date of last follow-up, or at death from other causes. Covariates included centrally reviewed Gleason score, baseline PSA value, clinical stage, extent of cancer (proportion of positive cores), age at diagnosis, and Ki-67.

The PSA concentration was modelled as the natural logarithm of $(1 + \text{PSA (ng ml}^{-1}\text{)})$, Ki-67 as a dichotomous variable ($\leq 10\%$, $> 10\%$) and Gleason scores were grouped into < 7 , $= 7$, and > 7 , for the primary analysis. We combined Gleason 3 + 4 and 4 + 3, because they showed little difference in our previous analysis (Cuzick *et al*, 2006).

All *P*-values were two-sided and 95% CIs and *P*-values, obtained from partial likelihoods of proportional hazards models, were based on χ^2 statistics with 1 degree of freedom, unless otherwise indicated. The main assessment was a univariate analysis of the association between death from prostate cancer and Ki-67 score. A multivariate Cox proportional hazards model was used to measure the added prognostic information after adjustment for the baseline variables. This was measured as the decrease in the likelihood ratio χ^2 when the Ki-67 score was omitted from a model containing it and the other relevant baseline clinical and pathological variables. Statistical analyses were done with STATA (version 11.2, StataCorp, College Station, TX, USA).

RESULTS

The derivation of the cohort is shown in Figure 2 and 293 men were available for analysis. The mean age at diagnosis was 69.6 years and during follow-up (mean 9.03 years; maximum 19.4 years), 217 (74%) men had died, 91 of prostate cancer, corresponding to 31% of the total cohort.

A total of 339 cores, from 293 patients, comprising one ($n = 258$ (88%)) to three ($n = 7$ (2%)) per patient, were stained for Ki-67. The maximum percent of cancerous cells staining per patient was evaluated; 106 (36%) scored as 1%, 87 (30%) as 5%, 31 (11%) as

10%, 16 (5%) as >10%, and 53 (18%) as 0 (Figure 3), and the mean Ki-76 score was 3.99%. Ki-67 score was significantly correlated with Gleason score, but not PSA or initial treatment (Table 2).

Ki-67 score was analysed as a binary variable for its prognostic value as a biomarker for prostate cancer-specific survival.

In univariate analysis, Gleason score, PSA, extent of disease, age at diagnosis, and Ki-67 score were all significant predictors of prostate cancer death (Table 3). Kaplan–Meier survival curves for Ki-67 in three groups (Figure 4) showed little difference between the two highest survival groups ($\leq 5\%$ and > 5 to $\leq 10\%$) and these were combined to form a dichotomous variable with a cutoff of $\leq 10\%$ which gave an HR = 3.42 (1.76, 6.62), χ^2 (1 df) = 9.8, $P = 0.002$. The majority of deaths (81) and the corresponding 277 cases were in the low Ki-67 groups with 10 deaths (16 cases) belonging to those with a high level Ki-67 score ($> 10\%$) (Table 3). We also assessed Ki-67 as a continuous variable (log scale) and as a dichotomous variable with 5% cutoff point, but results were similar.

In multivariate analysis, the dichotomous Ki-67 variable ($\leq 10\%$, $> 10\%$) added significant predictive information to that provided by Gleason score and PSA alone (HR = 2.78 (1.42, 5.46), χ^2 (1 df) = 7.0, $P = 0.008$) (Table 3). Covariates extent of disease and age were much less informative and excluded from the final model as they did not add significant predictive value. In clinical subgroups based on Gleason score or PSA, no heterogeneity was seen (Figure 5).

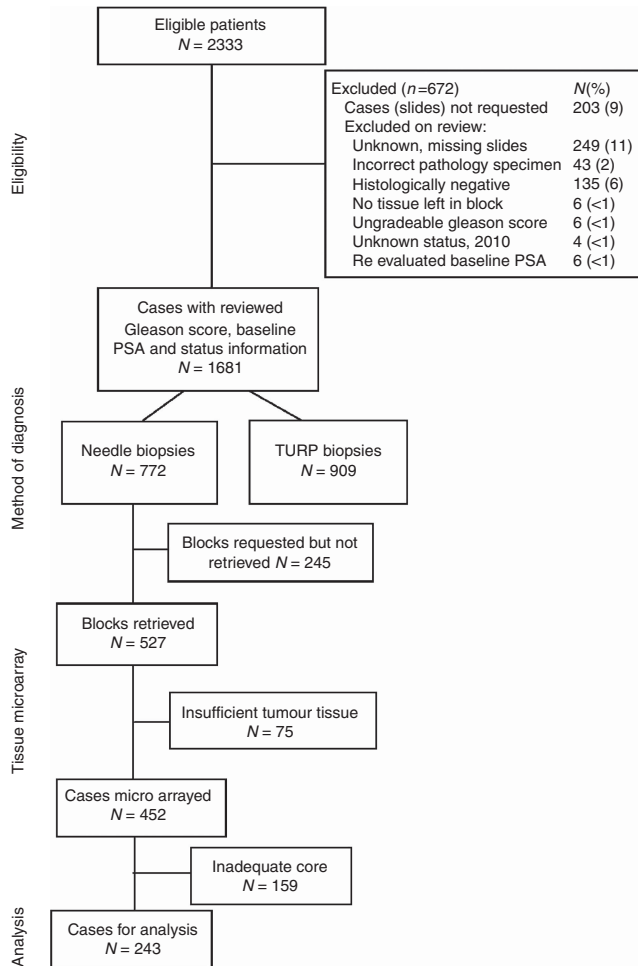


Figure 2. Consort diagram: overview of cohort.

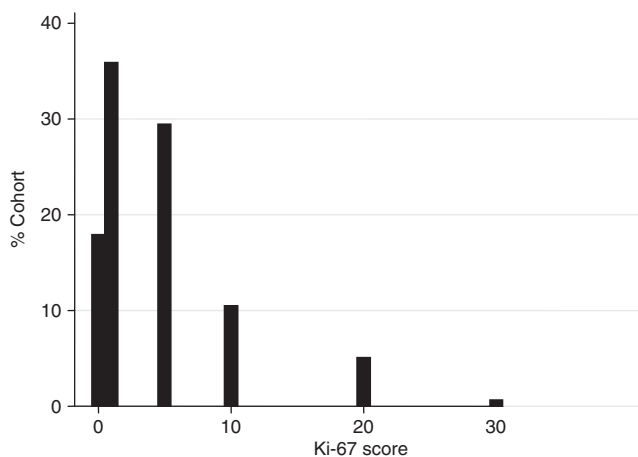


Figure 3. Distribution of Ki-67 score, in diagnostic needle biopsy tissue from a conservatively managed cohort of 293 men.

DISCUSSION

Although Ki-67 is the most studied of any immunochemical biomarker in prostate cancer, to our knowledge this is the first study to assess Ki-67 in conjunction with other known prognostic factors in a needle biopsy cohort of conservatively managed prostate cancers, with long-term survival data. Evidence from a large number of other studies shows that it is an independent significant prognostic marker in multivariate analysis of prostate cancer progression and death, but this is primarily in cohorts of patients treated by radical therapies.

This study shows that Ki-67 remains an important prognostic factor in multivariate analysis in a needle biopsy cohort, and can improve predictions of disease-specific survival based on Gleason score and PSA alone. There was no evidence for heterogeneity according to Gleason score or PSA, but results were not as strong as those seen previously in the TURP cohort (Berney *et al*, 2009). There may be several reasons for this. Prostate cancer is a

Table 2. Cross-tabulation of Ki-67 staining (% cells) with Gleason score and baseline PSA level (n = 293)

Variable	Ki-67					Total	Correlation χ^2 (P-value)
	0	1	5	10	20+		
Gleason score							31.6 (<0.001)
<7	17	44	17	5	1	84	
7	23	44	45	17	4	133	
>7	13	18	25	9	11	76	
Baseline PSA (ng ml⁻¹)							8.87 (0.92)
≤ 4	2	4	1	1	0	8	
>4–10	9	24	12	3	2	50	
>10–25	19	38	33	14	6	110	
>25–50	13	23	24	7	3	70	
>50–100	10	17	17	6	5	55	
Total	53	106	87	31	16	293	

Abbreviations: χ^2 = chi-square; PSA = prostate-specific antigen.

Table 3. Univariate and multivariate analysis for time to death from prostate cancer in a conservatively managed needle biopsy cohort (n = 293)

Variable	D/N	Univariate Hazard ratio (95% CI)	Multivariate (G, PSA, Ki-67) Hazard ratio (95% CI)
Gleason score			
<7	15/84	1 (ref)	1 (ref)
7	44/133	2.35 (1.30, 4.22)	1.96 (1.08, 3.55)
>7	32/76	4.57 (2.46, 8.48) $\chi^2 = 25.5$ (P < 0.001) ^a	3.20 (1.69, 6.07) $\chi^2 = 13.7$ (P < 0.0001)
PSA (log(1 + PSA) (ng ml⁻¹))			
	91/293	1.98 (1.50, 2.60) $\chi^2 = 24.6$ (P < 0.001)	1.75 (1.31, 2.32) $\chi^2 = 15.2$ (P < 0.0001)
Ki-67 groups (%)			
≤10	81/277	1 (ref)	1 (ref)
>10	10/16	3.42 (1.76, 6.62) $\chi^2 = 9.8$ (P = 0.002)	2.66 (1.36, 5.19) $\chi^2 = 6.5$ (P = 0.011)
Extent of disease (%)^b			
<50	11/50	1.00	
≥50 to <100	22/86	1.49 (0.72, 3.07)	
100	53/130	2.42 (1.26, 4.65) $\chi^2 = 9.6$ (P = 0.002)	
Age at diagnosis (years)			
	91/293	1.05 (1.00, 1.10) $\chi^2 = 4.3$ (P = 0.039)	

Abbreviations: CI = confidence interval; D = number of deaths; G = Gleason score; N = number of cases; PSA = prostate specific antigen; χ^2 = chi-square; ref = reference category.

^aAll χ^2 values are for trend and on 1 degree of freedom.

^bProportion of positive cores.

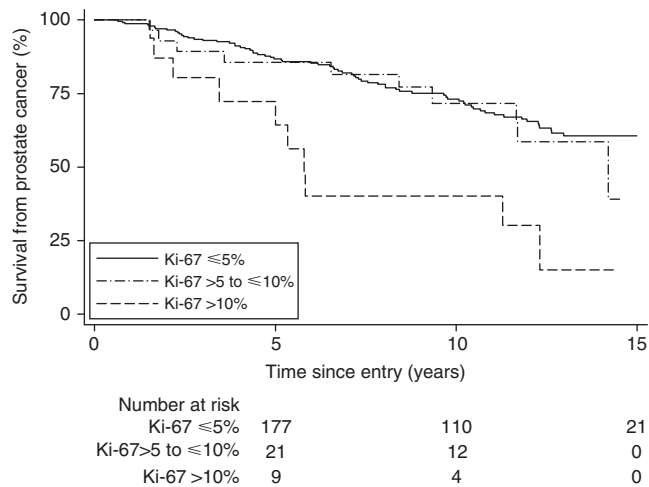


Figure 4. Kaplan–Meier estimates of prostate cancer death according to Ki-67 score in three groups: different categories of Ki-67 score are shown by different lines: solid, ≤5%; dotted, >5 to ≤10%; dashed, >10%.

heterogeneous disease and sampling the various regions of cancer is important. This is routinely performed in studies examining RP specimens. The TURP specimens examined in our previous study allowed three tumour foci to be sampled in the vast majority of cases, thus allowing Ki-67 assessment in multiple regions of tumour. However, needle biopsies sample much less of the prostate cancer than TURP specimens and there were <100 tumour cells in some biopsies. Also, because the biopsies were performed before

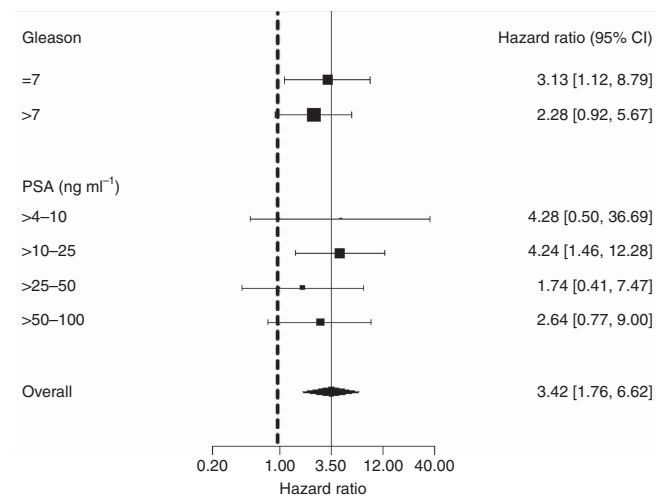


Figure 5. Hazard ratio for prostate cancer mortality for Ki-67 score (≤10%, >10%) within different clinical subgroups of Gleason score and prostate-specific antigen (PSA). The area of the box is proportional to the amount of information available and the horizontal bars represent 95% confidence intervals. The lowest Gleason group (<7) and PSA group (≤4 ng ml⁻¹) were omitted because there was only one observation in each of these groups.

1997, most of the cohort consisted of only between one and four cores per patient and very few had sextant prostatic sampling. This is therefore a limited sample including far fewer biopsies than the now minimum recommended guidelines for prostate cancer biopsy, leading to an inevitable lack of tissue. Better results may

be achievable with modern diagnostic methods and current guidelines, where 12 or more cores are taken that would be more indicative of the overall cancer burden and the most aggressive focus of tumour is more likely to be sampled.

There are a number of issues that need to be considered before recommending routine Ki-67 assessment of diagnostic specimens. As with all IHC assays, there is considerable potential for variation in Ki-67 IHC staining. Many of these points have been discussed within the breast cancer context (Dowsett *et al*, 2011). Variations in ischaemic time or formalin fixation may affect the amount of Ki-67 staining seen in prostate tissue similar to many other IHC assessments (Havelund *et al*, 2012). However, in this study, as Ki-67 IHC staining has been performed on biopsy samples of uniform thickness, formalin fixation occurs in a relatively controlled fashion and there is minimal ischaemic time. This is more of a problem in RP specimens where penetration of formalin may vary throughout the specimen.

Speed of processing the sample into wax embedded blocks also may influence immunostaining. Samples used in this study were collected from UK pathology laboratories, where samples taken to diagnose cancer are normally processed promptly and not left in formalin for longer than 48 h. However, this is an assumption.

Immunohistochemical staining can vary from run to run. In this study, we were able to assay the total cohort for Ki-67 using TMAs and fewer runs were needed than to stain each individual core. However, if Ki-67 IHC staining is to be used on a routine basis, this would not be possible. Variations in techniques are undoubtedly important (Fasanella *et al*, 2002) and a consensus similar to that recently achieved in breast cancer will be necessary if the technique is to move into the clinical sphere (Dowsett *et al*, 2011, Mengel *et al*, 2011).

In addition, this study has not dealt with the issue of inter-observer variation, which is significant in many pathological data: even including well-accepted pathological assessments such as Gleason score. The fact that Ki-67 assessment is robust in so many studies suggests that, similar to Gleason score, it will be robust when applied clinically.

Here, we scored Ki-67 in a semiquantitative manner, easily applicable in a routine pathology laboratory. We did not use computer-based systems as compared with other solid cancers, prostatic cancer is very difficult to identify by these methods. This is due to the subtle nature of the pleomorphism seen in prostatic cancers compared with normal glands, and the frequent intermingling of benign and malignant glands, as well as the presence of abundant stroma in many cases. The tiny nature of these samples would have made this an even greater challenge. Our group has previously reported both quantitative and semiquantitative methods to assess Ki-67 positivity (Berney *et al*, 2009). As the simpler method proved as informative as the more laborious quantitative methodology, it was used in this series. It is also more likely to be adopted in routine practice.

The stepwise scoring system provided several distinct values that could be implemented as cutoff points and in this needle biopsy cohort, a 10% cutoff was found to provide useful additional prognostic information to that provided by Gleason score and PSA. The Ki-67 dichotomous variable with a 10% cutoff was more prognostic for prostate cancer death than the 5% cutoff reported in our previous TURP cohort and matches the 10% cutoff reported in a needle biopsy cohort by Zellweger *et al* (2009), for biochemical recurrence.

Commercial tests that utilise morphology, immunochimistry of prostate adenocarcinoma biomarkers, or RNA analysis are in development, but are much more technically demanding. One such test (CCP score) has recently been shown to be highly predictive of mortality in TURP and needle biopsy cohorts and in a RP cohort (where prediction of biochemical recurrence was also observed) (Cuzick *et al*, 2011, 2012). While IHC measurement of Ki-67 was substantially less predictive than the mRNA-based CCP score, it

may have a role in instances where the CCP score is not feasible or affordable.

Future studies will include the assessment of intra-observer variation, and the utilisation of a larger and more contemporaneous series of conservatively treated prostate cancers.

ACKNOWLEDGEMENTS

We gratefully acknowledge support from Cancer Research UK, The Orchid Appeal, National Institutes of Health (SPOR) and the Koch Foundation. We also thank investigators and staff in the cancer registries and participating hospitals (Online Supplementary material, Appendix) for their support.

REFERENCES

- Berney DM, Gopalan A, Kudahetti S, Fisher G, Ambroisine L, Foster CS, Reuter V, Eastham J, Moller H, Kattan MW, Gerald W, Cooper C, Scardino P, Cuzick J (2009) Ki-67 and outcome in clinically localised prostate cancer: analysis of conservatively treated prostate cancer patients from the Trans-Atlantic Prostate Group study. *Br J Cancer* **100**(6): 888–893.
- Cowen D, Troncoso P, Khoo VS, Zagars GK, von Eschenbach AC, Meistrich ML, Pollack A (2002) Ki-67 staining is an independent correlate of biochemical failure in prostate cancer treated with radiotherapy. *Clin Cancer Res* **8**(5): 1148–1154.
- Cuzick J, Berney DM, Fisher G, Mesher D, Møller H, Reid JE, Perry M, Park J, Younus A, Gutin A, Foster CS, Scardino P, Lanchbury JS, Stone S. on behalf of the Transatlantic Prostate Group (2012) Prognostic value of a cell cycle progression signature for prostate cancer death in a conservatively managed needle biopsy cohort. *Br J Cancer* **106**: 1095–1099.
- Cuzick J, Fisher G, Kattan MW, Berney D, Oliver T, Foster CS, Møller H, Reuter V, Fearn P, Eastham J, Scardino P. Transatlantic Prostate Group (2006) Long-term outcome among men with conservatively treated localised prostate cancer. *Br J Cancer* **95**: 1186–1194.
- Cuzick J, Swanson GP, Fisher G, Brothman AR, Berney DM, Reid JE, Mesher D, Speights VO, Stankiewicz E, Foster CS, Møller H, Scardino P, Warren JD, Park J, Younus A, Flake 2nd DD, Wagner S, Gutin A, Lanchbury JS, Stone S. Transatlantic Prostate Group (2011) Prognostic value of an RNA expression signature derived from cell cycle proliferation genes in patients with prostate cancer: a retrospective study. *Lancet Oncol* **12**(3): 245–255.
- D'Amico AV, Halabi S, Vollmer R, Loffredo M, McMahon E, Sanford B, Archer L, Vogelzang NJ, Small EJ, Kantoff PW (2008) p53 protein expression status and recurrence in men treated with radiation and androgen suppression therapy for higher-risk prostate cancer: a prospective phase II Cancer and Leukemia Group B Study (CALGB 9682). *Urology* **71**: 933–937.
- Dowsett M, Nielsen TO, A'Hern R, Bartlett J, Coombes RC, Cuzick J, Ellis M, Henry NL, Hugh JC, Lively T, McShane L, Paik S, Penault-Llorca F, Prudkin L, Regan M, Salter J, Sotiriou C, Smith IE, Viale G, Zujewski JA, Hayes DF. International Ki-67 in Breast Cancer Working Group (2011) Assessment of Ki67 in breast cancer: recommendations from the International Ki67 in Breast Cancer working group. *J Natl Cancer Inst* **103**(22): 1656–1664.
- Epstein JI, Allsbrook Jr WC, Amin MB, Egevad LL. ISUP Grading Committee (2005) The 2005 International Society of Urological Pathology (ISUP) Consensus Conference on Gleason Grading of Prostatic Carcinoma. *Am J Surg Pathol* **29**(9): 1228–1242.
- Etzioni R, Penson DF, Legler JM, di Tommaso D, Boer R, Gann PH, Feuer EJ (2002) Overdiagnosis due to prostate-specific antigen screening: lessons from U.S. prostate cancer incidence trends. *J Natl Cancer Inst* **94**(13): 981–990.
- Fasanella S, Leonardi E, Cantaloni C, Eccher C, Bazzanella I, Aldovini D, Bragantini E, Morelli L, Cuorvo LV, Ferro A, Gasperetti F, Berlanda G, Dalla Palma P, Barbareschi M (2002) Proliferative activity in human breast cancer: Ki-67 automated evaluation and the influence of different Ki-67 equivalent antibodies. *J Pathol* **198**(3): 292–299.
- Gunia S, Albrecht K, Koch S, Herrmann T, Ecke T, Loy V, Linke J, Siegmund M, May M (2008) Ki67 staining index and neuroendocrine differentiation

- aggravate adverse prognostic parameters in prostate cancer and are characterized by negligible inter-observer variability. *World J Urol* **26**(3): 243–250.
- Havelund BM, Olsen DA, Andersen RF, Spindler KL, Brandslund I, Jakobsen A, Soerensen FB (2012) The influence of tissue ischemia on biomarker expression in colorectal cancer. *Appl Immunohistochem Mol Morphol*; e-pub ahead of print 10 October 2012.
- Jhavar S, Bartlett J, Kovacs G, Corbishley C, Dearnaley D, Eeles R, Khoo V, Huddart R, Horwich A, Thompson A, Norman A, Brewer D, Cooper CS, Parker C (2009) Biopsy tissue microarray study of Ki-67 expression in untreated, localized prostate cancer managed by active surveillance. *Prostate Cancer Prostatic Dis* **12**(2): 143–147.
- Khor LY, Bae K, Paulus R, Al-Saleem TI, Hammond ME, Grignon DJ, Che M, Venkatesan V, Byhardt RW, Rotman M, Hanks GE, Sandler HM, Pollack A (2009) MDM2 and Ki-67 predict for distant metastasis and mortality in men treated with radiotherapy and androgen deprivation for prostate cancer: RTOG 92-02. *J Clin Oncol* **27**(19): 3177–3184.
- Kristiansen G (2012) Diagnostic and prognostic molecular biomarkers for prostate cancer. *Histopathology* **60**(1): 125–141.
- Laitinen S, Martikainen PM, Tolonen T, Isola J, Tammela TL, Visakorpi T (2008) EZH2, Ki-67 and MCM7 are prognostic markers in prostatectomy treated patients. *Int J Cancer* **122**(3): 595–602.
- Li R, Heydon K, Hammond ME, Grignon DJ, Roach 3rd M, Wolkov HB, Sandler HM, Shipley WU, Pollack A (2004) Ki-67 staining index predicts distant metastasis and survival in locally advanced prostate cancer treated with radiotherapy: an analysis of patients in radiation therapy oncology group protocol 86-10. *Clin Cancer Res* **10**(12 Pt 1): 4118–4124.
- Lophatananon A, Tyndale-Biscoe S, Malcolm E, Rippon HJ, Holmes K, Firkins LA, Fenton M, Crowe S, Stewart-Brown S, Gnanapragasam VJ, Muir KR (2011) The James Lind Alliance approach to priority setting for prostate cancer research: an integrative methodology based on patient and clinician participation. *BJU Int* **108**: 1040–1043.
- McCarthy F, Dennis N, Flohr P, Jhavar S, Parker C, Cooper CS (2011) High-density tissue microarrays from prostate needle biopsies. *J Clin Pathol* **64**: 88–90.
- Mengel M, von Wasielewski R, Wiese B, Rüdiger T, Müller-Hermelink HK, Kreipe H (2011) Inter-laboratory and inter-observer reproducibility of immunohistochemical assessment of the Ki-67 labelling index in a large multi-centre trial. *Diagn Pathol* **6**(Suppl 1): S7.
- Pollack A, Cowen D, Troncoso P, Zagars GK, von Eschenbach AC, Meistrich ML, McDonnell T (2003) Molecular markers of outcome after radiotherapy in patients with prostate carcinoma: Ki-67, bcl-2, bax, and bcl-x. *Cancer* **97**(7): 1630–1638.
- Pollack A, DeSilvio M, Khor LY, Li R, Al-Saleem TI, Hammond ME, Venkatesan V, Lawton CA, Roach 3rd M, Shipley WU, Hanks GE, Sandler HM (2004) Ki-67 staining is a strong predictor of distant metastasis and mortality for men with prostate cancer treated with radiotherapy plus androgen deprivation: Radiation Therapy Oncology Group Trial 92-02. *J Clin Oncol* **22**(11): 2133–2140.
- Rubin MA, Dunn R, Strawderman M, Pienta KJ (2002) Tissue microarray sampling strategy for prostate cancer biomarker analysis. *Am J Surg Pathol* **26**(3): 312–319.
- Rubio J, Ramos D, López-Guerrero JA, Iborra I, Collado A, Solsona E, Almenar S, Llombart-Bosch A (2005) Immunohistochemical expression of Ki-67 antigen, cox-2 and Bax/Bcl-2 in prostate cancer; prognostic value in biopsies and radical prostatectomy specimens. *Eur Urol* **48**(5): 745–751.
- Sebo TJ, Chevile JC, Riehle DL, Lohse CM, Pankratz VS, Myers RP, Blute ML, Zincke H (2002) Perineural invasion and MIB-1 positivity in addition to Gleason score are significant preoperative predictors of progression after radical retropubic prostatectomy for prostate cancer. *Am J Surg Pathol* **26**(4): 431–439.
- Stattin P, Damber JE, Karlberg L, Bergh A (1997) Cell proliferation assessed by Ki-67 immunoreactivity on formalin fixed tissues is a predictive factor for survival in prostate cancer. *J Urol* **157**(1): 219–222.
- Vergis R, Corbishley CM, Thomas K, Horwich A, Huddart R, Khoo V, Eeles R, Sydes MR, Cooper CS, Dearnaley D, Parker C (2010) Expression of Bcl-2, p53, and MDM2 in localized prostate cancer with respect to the outcome of radical radiotherapy dose escalation. *Int J Radiat Oncol Biol Phys* **78**: 35–41.
- WHO. International Statistical Classification of Diseases and Related Health Problems. 10th revision, 4th edition (2010) ISBN 978 92 4 154834 2 http://www.who.int/classifications/icd/ICD10Volume2_en_2010.pdf.
- Zellweger T, Günther S, Zlobec I, Savic S, Sauter G, Moch H, Mattarelli G, Eichenberger T, Curschellas E, Rüfenacht H, Bachmann A, Gasser TC, Mihatsch MJ, Bubendorf L (2009) Tumour growth fraction measured by immunohistochemical staining of Ki67 is an independent prognostic factor in preoperative prostate biopsies with small-volume or low-grade prostate cancer. *Int J Cancer* **124**(9): 2116–2123.

This work is published under the standard license to publish agreement. After 12 months the work will become freely available and the license terms will switch to a Creative Commons Attribution-NonCommercial-Share Alike 3.0 Unported License.

Supplementary Information accompanies this paper on British Journal of Cancer website (<http://www.nature.com/bjc>)