

Disease duration in autosomal dominant familial Alzheimer disease

A survival analysis

Ivanna M. Pavisc, MRes, Jennifer M. Nicholas, PhD, Antoinette O'Connor, MRCPI, Helen Rice, MSc, Kirsty Lu, PhD, Nick C. Fox, MD, FMedSci,* and Natalie S. Ryan, MRCP, PhD*

Correspondence

Ivanna M. Pavisc
ivanna.pavisc.15@ucl.ac.uk

Neurol Genet 2020;6:e507. doi:10.1212/NXG.000000000000507

Abstract

Objective

To use survival modeling to estimate disease duration in autosomal dominant familial Alzheimer disease (ADAD) and ascertain whether factors influencing age at onset also affect survival.

Methods

Symptomatic mutation carriers (201 presenilin 1 [*PSEN1*] and 55 amyloid precursor protein [*APP*]) from ADAD families referred to the Dementia Research Centre, between 1987 and 2019, were included. Survival was assessed with respect to age at onset, year of birth, *APOE* $\epsilon 4$ status, cognitive presentation, and sex using multilevel mixed-effects Weibull survival models. The contribution of mutation and family to variance in age at onset and duration was also assessed.

Results

Estimated mean survival was 11.6 (10.4–12.9) years and was similar for *APP* and *PSEN1* mutations. Sixty-seven percent of the variance in age at onset was explained by mutation and 72% by mutation and family together. In contrast, only 6% of the variance in disease duration was explained by mutation specificity and 18% by family membership. Irrespective of gene, survival appeared longer for successive generations and in individuals with atypical presentations. Older age at onset was associated with longer duration within *PSEN1* and shorter duration within *APP* mutation carriers. No differences in survival time were found between sexes or between mutations located before or beyond codon 200 within *PSEN1*.

Conclusions

Survival is influenced by mutation to a much lesser extent than age at onset. Survival time has increased over time and is longer in atypical presentations. These insights may inform the interpretation of disease-modifying therapy trials in ADAD.

*Joint senior authors.

From the Department of Neurodegenerative Diseases (I.M.P., J.M.N., A.O., H.R., K.L., N.C.F., N.S.R.), Dementia Research Centre, UCL Queen Square Institute of Neurology, London; UK Dementia Research Institute at University College London (I.M.P., A.O., H.R., N.C.F., N.S.R.); and Department of Medial Statistics (J.M.N.), London School of Hygiene and Tropical Medicine, United Kingdom.

Go to [Neurology.org/NG](https://www.neurology.org/NG) for full disclosures. Funding information is provided at the end of the article.

The Article Processing Charge was funded by Research Councils UK.

This is an open access article distributed under the terms of the Creative Commons Attribution License 4.0 (CC BY), which permits unrestricted use, distribution, and reproduction in any medium, provided the original work is properly cited.

Glossary

AD = Alzheimer disease; **ADAD** = autosomal dominant familial Alzheimer disease; **APP** = amyloid precursor protein; **CI** = confidence interval; **ICC** = intraclass correlation coefficient; **MRC** = Medical Research Council; **PSEN1** = presenilin 1; **TR** = time ratio.

There are currently no disease-modifying treatments for Alzheimer disease (AD). Although the search for such treatments continues, it is relevant to investigate variability in disease duration and to study factors influencing survival time.¹ Autosomal dominant familial Alzheimer disease (ADAD) accounts for less than 1% of all AD cases.² Pathogenic mutations in presenilin 1 (*PSEN1*),³ presenilin 2,⁴ or amyloid precursor protein (*APP*)⁵ are nearly 100% penetrant, and age at onset is correlated among family members.⁶ This offers a unique opportunity to study survival after symptom onset relatively precisely. Mean age at onset tends to be significantly later for *APP* than *PSEN1* mutations,⁶ and a previous study of our *PSEN1* cohort found that 72% of the variance in age at onset was explained by the specific mutation and 82% by mutation and family membership together.⁷ As in sporadic AD (particularly in young-onset AD),⁸ some patients present atypically with initial symptoms involving cognitive domains other than memory (e.g., language or behavior^{7,9}), which tend to be more common in *PSEN1* compared with *APP*, and particularly in *PSEN1* mutations beyond codon 200.⁷ Given that a considerable amount of the variability in age at onset can be explained by genetic factors,⁶ we undertook the current study to investigate the hypothesis that genetic differences also affect disease duration in ADAD.

Previous studies have often estimated disease length, including only patients who have died, by subtracting an individual's age at onset from their age at death. This leads to an intrinsic bias against longer disease durations as individuals who are affected, but have not yet died, cannot be included.¹⁰ There have only been a few comprehensive studies of age at onset and disease course in ADAD, including a meta-analysis,^{6,11,12} but none of these used survival models to account for censoring in date of death in those who did not die during the follow-up period. Investigations into generational effects on survival time in ADAD are also lacking, and survival modeling may offer a useful approach to evaluate these issues.

The current study addresses differences in survival time between *APP* and *PSEN1* mutations, *APOE* ϵ 4 carriers and ϵ 4 noncarriers, sexes, cognitive presentations, and *PSEN1* mutation position in relation to codon 200. We also evaluate the extent to which disease duration varies by mutation and family within each gene and the influence of age at onset and year of birth on disease duration. We report these differences in detail while accounting for censoring.

Methods

Study design and participants

We conducted a retrospective cohort study of families with histories suggestive of ADAD, which were referred to the Dementia Research Centre at University College London's Institute of Neurology (London, United Kingdom) from clinical and research centers across the United Kingdom and Ireland between July 1, 1987, and September 2, 2019. We used clinical and genetic data from these families (table 1). Inclusion criteria for the study were a family history suggestive of ADAD and known age at symptom onset. Exclusion criteria were a neurodegenerative condition other than ADAD, unknown age at symptom onset, unknown year of birth, and no information on last year of contact with the center.

Procedures

Contemporaneous records were evaluated to determine age at onset, defined as the age at which progressive symptoms of cognitive, behavioral, or motor changes were first noticed by someone who knew the patient well, and the nature of the initial symptoms. The cognitive presentation was classified as either amnesic, for those with initial memory symptoms, or atypical, for those with nonamnesic initial symptoms such as behavioral change or symptoms of language or executive dysfunction or dyscalculia. One individual was excluded from the cognitive presentation analysis as they had a motor presentation that preceded cognitive symptoms. Age at death was ascertained from examination of medical records, postmortem reports, and interviews with living relatives and was collected up to September 2019. Disease duration was calculated by subtracting the age at death from the age at onset where this was available ($N = 197$), and where this was not available, the disease duration at censoring was calculated from the age of the individual at their last assessment ($N = 71$). One participant with 2 *PSEN1* substitutions (p.Thr291Ala and p.Ala343Thr) was excluded from the exon analysis because it was unclear whether pathogenicity was due to one or both of these amino acid substitutions.⁷ Twelve additional individuals were excluded from all analysis: 5 due to uncertainty in year of last contact (information necessary for censoring) and 7 due to unknown year of birth (variable considered as a covariate in all models) (figure e-1, supplementary materials, links.lww.com/NXG/A312). The intron 4 mutation was classified as involving exon 4 because it is located just outside this exon.

Mutation analysis was performed as described previously^{7,13} using Sanger sequencing. *APOE* ϵ 4 status was determined by the Medical Research Council (MRC) Prion Unit (London, United

Table 1 *PSEN1* and *APP*: characteristics of our cohort (N = 256)

	<i>APP</i>	<i>PSEN1</i>	<i>APP + PSEN1</i>
No. families	12	64	76
No. mutations	7	45	52
Total no. symptomatic individuals	55	201	256
Sex (males %)	32 (58.2%)	94 (46.7%)	126 (49.2%)
No. known deaths	43 (78.2%)	147 (73.1%)	190 (74.2%)
Clinical presentation			
No. with available data	37	101	138
Amnesic	36 (97.3%)	83 (82.2%)	119 (86.2%)
Atypical	1 (2.7%)	18 ^a (17.8%)	19 (13.8%)
APOE genotype			
No. with available data	31	96	127
APOE ε4 carrier	7 (22.6%)	36 (37.5%)	43 (33.9%)
APOE 44	1	3	4
APOE 34	6	31	37
APOE 24	0	1	1
APOE ε4 noncarrier	24 (77.4%)	60 (62.5%)	84 (66.1%)
APOE 23	3	5	8
APOE 33	21	54	75
APOE 22	0	1	1

Abbreviations: *APP* = amyloid precursor protein; *PSEN1* = presenilin 1.

^a One additional individual was subsequently excluded as the motor presentation preceded cognitive symptoms.

Kingdom) using minor groove binding probe genotyping assays (TaqMan, Applied Biosystems). As described in our previous work, individuals with novel variants in *PSEN1* or *APP* were assessed for the presence of additional mutations in other dementia-related genes using the MRC Dementia Gene Panel.^{7,14} All novel sequence variants were absent from the Genome Aggregation Database (gnomad.broadinstitute.org/).

In total, 256 individuals were included in the analyses (201 with *PSEN1* and 55 with *APP* mutations) (table-e1, supplementary materials for specific mutations, links.lww.com/NXG/A312).

Statistical analysis

We investigated differences in disease duration between *APP* and *PSEN1* genes, *APOE* ε4 carriers and ε4 noncarriers within each genetic group, cognitive presentation, sex, exon number, and position in relation to codon 200 (*PSEN1* only) using the Kaplan-Meier survival estimate for descriptive statistics and Weibull multilevel parametric survival analysis (using an accelerated failure time model) to compare the

survival function of different groups of patients and test the specific hypothesis. Following the second-order relationship between disease duration and age at onset in Ryman et al.⁶ meta-analysis, we predefined that we would investigate a quadratic term for age at onset. We tested the interaction with gene. Sex, year of birth (range: 1879–1983), and gene were included as fixed effects and family (as a proxy to mutation) as random effects in all survival models. The intraclass correlation coefficient (ICC) was used to quantify the proportion of variance in disease duration explained by mutation and family (supplementary materials, links.lww.com/NXG/A312).

Linear mixed-effects models with random effects for mutation and family and fixed effects for sex, year of birth, and gene were used to compare differences in age at onset between genes and cognitive presentations within *PSEN1* mutations.

We used $p < 0.05$ as our measure of statistical significance and Stata v14 (StataCorp 2015) or later for all analyses. Bonferroni correction for multiple comparisons was applied for comparison of disease duration between exons.

Standard protocol approvals, registrations, and patient consents

The study was approved by The National Hospital for Neurology and Neurosurgery and Institute of Neurology Joint Research Ethics Committee (subsequently, National Research Ethics Service Committee, London Queen Square, Research Ethics Committee ref 11/LO/0753). Written informed consent was obtained from all participants or from their consultee if cognitive impairment prohibited written informed consent.

Data availability

Anonymized data will be shared by request from any qualified investigator.

Results

Age at symptom onset was available for all 256 individuals included (201 with *PSEN1* and 55 with *APP* mutations). Age at death was available for 190 of those individuals (77.0% of the data set: 147 *PSEN1* and 43 *APP* mutations) (table 1).

Disease duration and age at onset: *APP* vs *PSEN1*

Considering only individuals with known age at death (which does not take into account censoring) (N = 190), the mean disease duration was 10.4 years (SD 5.3), range: 2–32 years. Survival analysis (N = 256) revealed a 75% probability of surviving at least 7 years, 50% of surviving at least 10 years, 25% of surviving at least 14 years, and an estimated mean duration of 11.6 (10.4–12.9) years. Estimated survival time was similar between *APP* and *PSEN1* mutation carriers (table 2, figure 1).

Table 2 Disease duration in our cohort, estimated mean survival time, and effects from survival model comparison

	Disease duration ^a : mean (SD) (y)	Disease duration: range (y) ^a	Estimated survival ^b (95% CI) (y) ^b	TR	TR: 95% CI	p Value
Genes	N = 190		N = 256			
APP	11.2 (4.9)	4–23	12.5 (9.7–15.3)	Reference		
PSEN1	9.7 (5.3)	2–32	11.4 (10.1–12.7)	0.91	0.72–1.17	0.474
Sex	N = 190		N = 256			
Females	10.0 (5.4)	2–32	11.7 (10.3–13.1)	Reference		
Males	10.1 (5.2)	2–29	11.6 (10.1–13.1)	0.99	0.86–1.13	0.895
Clinical presentation						
PSEN1 and APP	N = 87		N = 139			
Amnestic	10.9 (5.5)	2–27	11.9 (10.6–13.1)	Reference		
Atypical	15.5 (7.1)	9–32	17.1 (12.4–21.9)	1.44	1.08–1.93	0.013^c
PSEN1	N = 60		N = 102			
Amnestic	10.2 (5.4)	2–27	11.2 (9.8–12.6)	Reference		
Atypical	15.9 (7.4)	9–32	16.7 (12.0–21.5)	1.49	1.11–2.01	0.009^c
APOE status						
PSEN1 and APP	N = 92		N = 127			
ε4 noncarriers	10.4 (5.2)	2–27	11.3 (9.9–12.7)	Reference		
ε4 carriers	12.8 (6.4)	5–32	13.2 (11.1–15.3)	1.16	0.97–1.39	0.100
PSEN1	N = 69		N = 96			
ε4 noncarriers	9.4 (4.7)	2–27	10.6 (9.0–12.1)	Reference		
ε4 carriers	12.9 (6.7)	5–32	13.2 (10.8–15.5)	1.24	1.00–1.54	0.046^c
APP	N = 23		N = 31			
ε4 noncarriers	12.7 (5.8)	4–23	13.4 (10.3–16.6)	Reference		
ε4 carriers	12.7 (5.6)	6–23	12.6 (8.4–16.9)	0.94	0.65–1.35	0.738
PSEN1: codon 200	N = 147		N = 201			
Post	9.9 (5.9)	2–32	11.9 (9.9–14.0)	Reference		
Pre	9.3 (4.7)	3–27	11.5 (9.3–13.7)	0.96	0.76–1.22	0.746

Abbreviations: APP = amyloid precursor protein; CI = confidence interval; PSEN1 = presenilin 1; TR = time ratio.

TR, 95% CI, and p value encompass the effects of the survival model.

^a Disease duration was calculated from individuals with known ages at death only.

^b Estimated mean survival included any additional censored data.

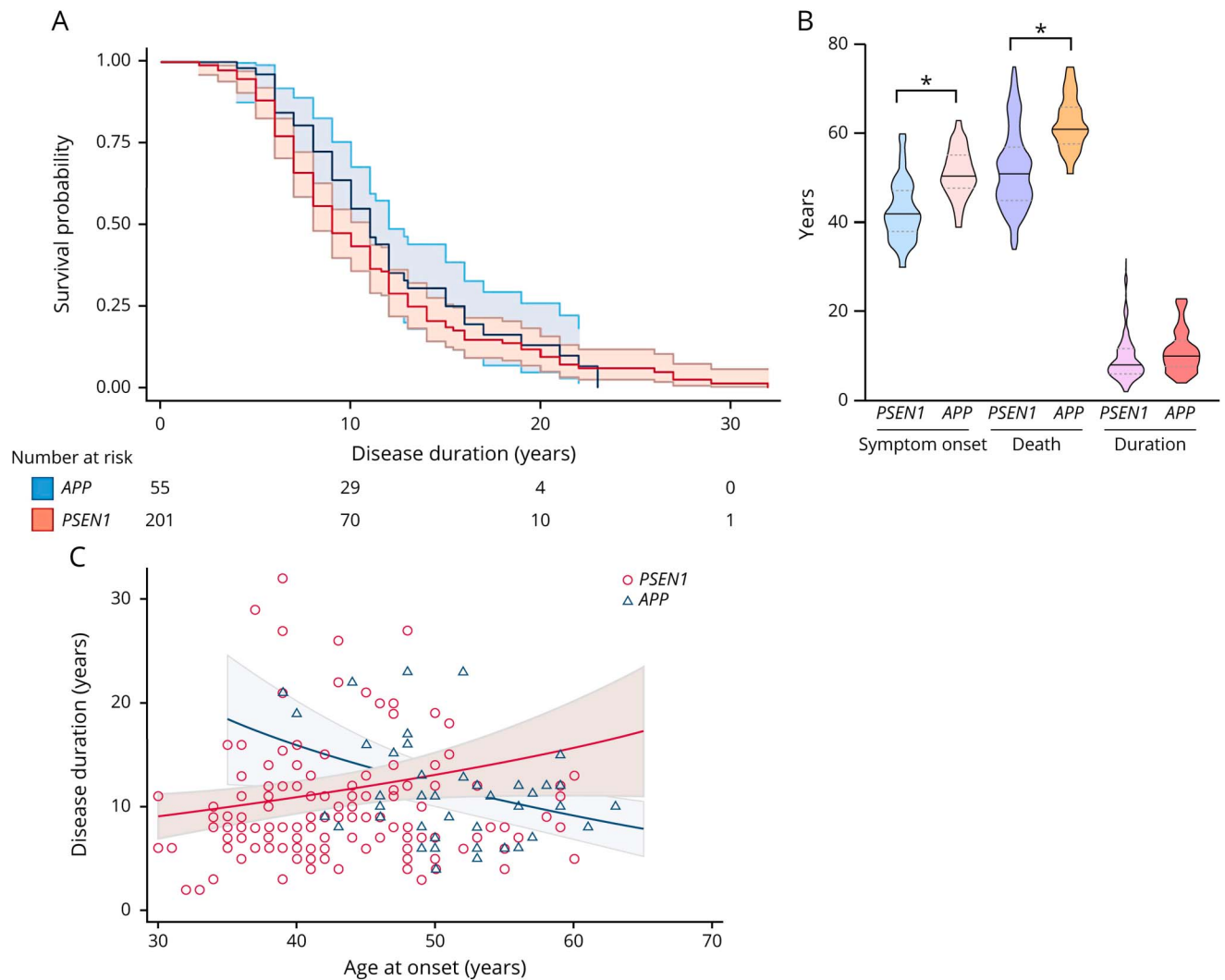
^c Bold: significant at $p < 0.05$.

Considering the cohort as a whole, family membership explained 18% (ICC 0.18; $p < 0.001$) of the variability in disease duration, and mutation specificity explained 6% (ICC 0.06; $p = 0.188$). In patients with a PSEN1 mutation, 25% of the variance in disease duration was explained by family membership (ICC 0.25, $p < 0.001$) and 10% by a specific mutation (ICC 0.10, $p = 0.129$). Data were not analyzed separately for APP mutations due to small numbers.

In accordance with our previous work,⁷ age at onset was on average 7.1 years later for individuals with APP mutations

(mean age 50.6 years [SD 5.6], range 38–63 years) than those with PSEN1 mutations (43.5 years [7.2], range: 30–62 years; $p < 0.001$) (figure 1) (figure e-2, links.lww.com/NXG/A312, for age at onset distribution of sample). In patients with PSEN1 mutations, 72% of the variance in age at onset was explained by mutation (ICC 0.72, $p < 0.001$). Mutation and family membership together explained 80% of the variance in age at symptom onset (ICC 0.80, $p < 0.001$). Considering both genes together, 67% of the variance was explained by mutation and 72% by mutation and family together.

Figure 1 Symptom onset, age at death, disease duration, and survival probability by gene



(A) Unadjusted Kaplan-Meier survival plots show the estimated survival probability by disease duration for *PSEN1* vs *APP*. The blue line references *APP* and the red line *PSEN1*. Ninety-five percent CIs and number of individuals still alive per disease duration length, by 10 years, by 20 years, and by 30 years, are also shown. (B) Violin plots show the distribution of age at symptom onset, at death, and disease duration for *PSEN1* vs *APP*. Data are median (line) with median interquartile range (upper and lower dotted lines). Age at onset: 42 (38–48) years vs 50 (48–55) years; age at death: 52 (46–58) years vs 61 (58–66) years; and disease duration: 8 (6–12) years vs 10 (8–13) years. “*” indicates significant difference between groups. (C) Scatter plot shows the association between age at symptom onset and age at death in *PSEN1* vs *APP*. The solid line represents the line of best fit from the survival model, adjusted for sex, year of birth, and clustered by family membership for each gene. The shaded area represents 95% CIs. Markers show the unadjusted raw data: hollow blue triangles represent individuals with *APP* mutations and hollow red circle markers individuals with *PSEN1* mutations. *APP* = amyloid precursor protein; CI = confidence interval; *PSEN1* = presenilin 1.

Although no linear relationship between an individual’s age at onset and the estimated length of disease course was observed {time ratio [TR] = 1.00 (95% confidence interval [CI] 0.99–1.01), $p = 0.286$ }, there was an interaction between age at onset and gene in relation to estimated survival (TR = 1.05 [1.02–1.08], $p = 0.001$). In *PSEN1* mutations, later ages at onset were associated with longer disease durations (disease duration increased by 1.8% for every 1-year increase in age at onset [95% CI 0.3–3.4]). Whereas in *APP*, later ages at onset were associated with shorter disease durations (disease duration decreased by 3.0% for every 1-year increase in age at onset [95% CI 0.9–4.7]) (figure 1). Like Ryman and colleagues,⁶ we detected an “inverted-U” shape relationship between age at onset and age at death such that patients with early (younger

than 40 years) or late (older than 50 years) onset each had shorter disease duration than patients with onset in midlife (40–50 years) irrespective of the gene ($\chi^2 = 6.12$, $p = 0.047$; considering age at onset as a quadratic term). However, including the gene interaction abolished this quadratic association ($\chi^2 = 1.33$, $p = 0.515$), indicating that gene membership may have driven the “inverted-U” shape effect.

Sex and year of birth

Sex did not appear to affect disease duration, either for the cohort as a whole (table 2) or for genes separately (data not shown).

Irrespective of the gene, an individual’s year of birth appeared to influence survival and age at onset, with age at onset being

earlier and duration longer in more recent times. Disease duration increased by 0.6 (95% CI 0.2–1.0) % for every increase in 1 year of birth ($p = 0.003$). This was also the case when considering genes separately. Further analysis revealed that the greatest difference in survival time was between individuals born before and after 1931: estimated survival: 9.1 (7.7–10.4) years vs 12.2 (10.8–13.5) years (figure 2). Age at onset decreased by 0.04 (0.01–0.07) years for every increase in 1 year of birth ($p = 0.004$). Comparing individuals born before or after the 1930s, we found that the average age at onset was 45.5 (43.3–47.7) years vs 44.6 (42.7–46.5) years, respectively (estimated difference = 0.9 [–2.1 to 0.4] years, $p = 0.181$). The significantly longer survival time for later generations remained after adjusting for age at onset (0.6 [0.2–1.0] % increase in survival for every increase in 1 year of birth; survival estimates pre vs post births in the 1930s: 8.9 [7.6–10.3] years vs 12.2 [10.9–13.5] years).

Clinical presentation

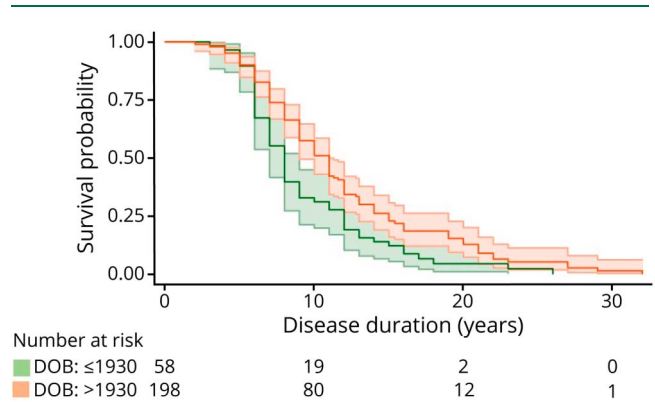
The *PSEN1* subgroup with atypical cognitive presentations had, on average, a somewhat older age at onset than those with *PSEN1* carriers with amnesic presentations (amnesic: 42.4 years [SD 7.3] range: 30–62 years vs atypical: 45.4 years [5.7], range: 38–58 years), but there was little evidence to support this difference, $p = 0.592$ (figure e-3, supplementary materials, links.lww.com/NXG/A312). Within the *PSEN1* group, individuals with atypical presentations had a 49.2% longer survival time compared with those with amnesic presentations (table 2 and figure 3). Only 8% of the variance in survival time between individuals with the same cognitive presentations in *PSEN1* mutations was explained by family membership (ICC 0.08, $p = 0.157$). The difference in estimated survival time between cognitive presentations was replicated combining *APP* and *PSEN1* groups together (table 2). We did not find any interactions between the cognitive presentation and codon 200 position, *APOE* $\epsilon 4$ status, or age at onset (data not shown). Similar results emerged when we included age at onset as a covariate in the model.

APOE $\epsilon 4$ status

APOE $\epsilon 4$ status did not have an effect on age at onset in our cohort (mean [95% CI]: $\epsilon 4$ carriers = 44.0 [41.8–46.1] years vs $\epsilon 4$ noncarriers = 44.5 [42.5–46.5], $p = 0.495$). Considering *PSEN1* and *APP* mutation carriers together, survival analysis ($N = 127$) revealed similar estimates between $\epsilon 4$ carriers and $\epsilon 4$ noncarriers (table 2).

There was no interaction between *APOE* $\epsilon 4$ status and gene (TR = 1.35 [0.87–2.08], $p = 0.180$). Nonetheless, further analysis revealed an effect seemingly restricted to *PSEN1* mutations ($N = 96$): there was some evidence that $\epsilon 4$ carriers had longer survival time compared with $\epsilon 4$ noncarriers (table 2). *APOE* $\epsilon 4$ status did not have an effect on disease duration in the small group of individuals with *APP* mutations ($N = 31$) (table 2) (figure e-5, supplementary materials, links.lww.com/NXG/A312). We then examined *APOE* $\epsilon 4$ heterozygous and homozygous groups separately. Because of statistical power

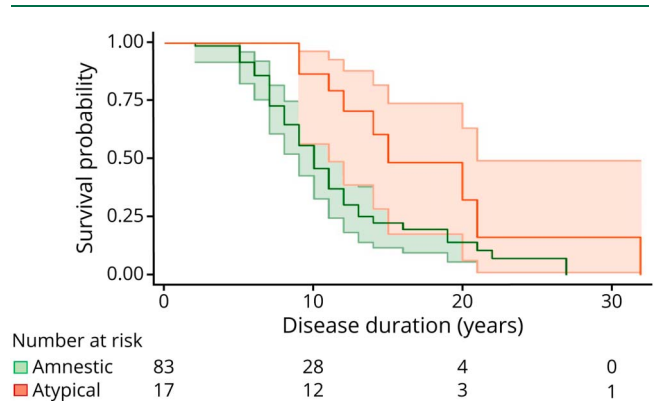
Figure 2 Survival probability pre- and post-births in the 1930s



Unadjusted Kaplan-Meier survival plot showing survival by disease duration for individuals born before and after the 1930s. Green references individuals born by 1930 and orange after 1930. Ninety-five percent CIs and number of individuals still alive per disease duration length, by 10 years, by 20 years, and by 30 years, are also shown. CI = confidence interval; DOB = date of birth.

limitations for homozygous carriers ($N = 4$), we report heterozygous $\epsilon 4$ carrier results only ($N = 38$). In the whole cohort, there was a trend toward carriers of 1 $\epsilon 4$ allele having a 20% longer survival time compared with $\epsilon 4$ noncarriers (13.7 [11.3–16.0] years vs 11.4 [10.0–12.9] years, $p = 0.056$). Within the *PSEN1* cohort, the possession of 1 $\epsilon 4$ allele was associated with a 30% longer survival time (13.7 [11.1–16.3] years vs 10.6 [9.0–12.1] years, $p = 0.023$). Comparing carriers of 1 $\epsilon 4$ allele with noncarriers in the *APP* cohort did not reveal any differences (12.3 [7.4–17.3] years vs 13.5 [10.1–17.0] years, $p = 0.677$) (figure e-6 and table e-2, supplementary materials, links.lww.com/NXG/A312). Considering age at onset in these models did not change results (data not shown).

Figure 3 *PSEN1*: survival probability by clinical presentation



Unadjusted Kaplan-Meier survival plot shows the estimated survival probability by disease duration for clinical presentations. Ninety-five percent CIs and number of individuals still alive per disease duration length, by 10 years, by 20 years, and by 30 years, are also shown. Green references individuals with amnesic presentations and orange individuals with atypical presentations. CI = confidence interval; *PSEN1* = presenilin 1.

PSEN1 mutation location

Survival time did not differ between individuals with *PSEN1* mutations located pre- or post-codon 200 (table 2). Considering age at onset in these models did not change results (data not shown). Some individuals with *PSEN1* mutations in exon 8 (N = 40) appeared to reach particularly long disease durations (mean exon 8 duration—in those with known age at death: 11.3 years [SD 5.9], range: 5–32 years; figure e-4, supplementary materials, links.lww.com/NXG/A312). After adjusting for multiple comparisons (28 comparisons: Bonferroni correction), mutations located in exon 8 (N = 58) had longer survival estimates than in those in exon 11 (N = 6) (14.0 [10.8–17.2] years vs 6.2 [3.4–9.0] years, $p = 0.034$). Fifteen percent of the variability in survival time among those with a mutation on the same exon was explained by family membership (ICC 0.15, $p = 0.004$).

Discussion

In this study, individuals with *APP* mutations had, on average, similar estimated survival time to individuals with *PSEN1* mutations—despite the *APP* group having an age at onset that was, on average, 7 years later than the average age at onset in the *PSEN1* group. Estimated mean survival for our cohort was just over a decade. There was, however, great variability in disease duration for both the *PSEN1* (2–32 years) and *APP* (4–23 years) groups and unlike age at onset, mutation type, and family membership explained relatively little of this variance. In this respect, it may be relevant that we found family membership to account for a slightly larger proportion of variance in disease duration than mutation type, although shared environmental factors could also contribute to this finding. Although longer survival for females compared with males has been reported in sporadic AD,¹⁵ our results do not provide evidence for sex differences in survival in ADAD, which affects individuals at a much younger age.

In accordance with Ryman et al.⁶ meta-analysis, there was a trend for longer disease duration in individuals with an age at onset of 40–50 years (compared with <40 years or >50 years). Looking at *PSEN1* and *APP* mutation carriers separately suggested that while in *PSEN1* mutations, later ages at onset were associated with longer disease durations, in *APP* later ages at onset were associated with shorter disease durations. Although it is unclear why these differences between *APP* and *PSEN1* exist, different paths of disease course between genes may underly this “inverted-U” shape relationship observed also in other studies.⁶

Our results indicate that individuals born after 1930 had longer survival time compared with those born in previous generations and that age at onset was earlier with more recent years of birth. These suggest that gradually (with no step change), onset or recognition of onset has come earlier. This may likely be due to greater awareness within families, with onset coming about 2 years earlier over the course of 2

generations (~50 years). Nonetheless, survival has increased over and above this. As the difference in age at onset between births before and after 1931 was smaller than the difference in survival time (0.9 years vs 3.1 years), this increase in survival time could not solely be explained by earlier awareness of symptoms. The increase in survival observed over the study period accords with the fact that care, as well as life expectancy, has improved. Notably, antibiotics would have become widely available by the time individuals born after the 1930s were clinically affected.¹⁶

Despite phenotypic and pathologic differences reported between *PSEN1* mutations located before and beyond codon 200^{7,17,18} we,¹⁹ like others,¹⁷ found that disease duration did not significantly differ between these mutation groups. Atypical presentations have been reported to be more common with *PSEN1* mutations beyond codon 200 in our cohort, and the prevalence of atypical symptoms also differs markedly between exons, with nonamnestic cognitive presentations and pyramidal signs particularly common with mutations located in exon 8.⁷ Findings from the current study suggest that individuals with exon 8 mutations may also have particularly long disease durations. An intronic polymorphism in *PSEN1* between exon 8 and exon 9 has been reported to show a significant association with late-onset disease.^{20,21} There may be differences in the disease process induced by variants located in this region of *PSEN1*, which drive later ages at symptom onset, longer disease durations, and atypical presentations.

Our findings suggest that carrying *APOE* ε4 may be associated with increased survival time in individuals with *PSEN1* mutations, but not in *APP* mutation carriers. However, this would need confirmation as we were not able to demonstrate a significant difference between the 2 genetic groups in the effect of *APOE* ε4. Of interest, the rare *APOE* ε3 Christchurch p. Arg136Ser mutation has recently been reported to delay onset of cognitive symptoms by 3 decades in a carrier of the Colombian *PSEN1* p.Glu280Ala mutation.^{22,23} These findings could have implications for the role of *APOE* in the pathogenesis, treatment, and prevention of AD and highlight how much remains unknown about the complexities of interactions between different genetic risk factors and their influence on disease onset and survival. Larger ADAD studies that consider the full range of *APOE* genotypes and follow individuals over time are needed to untangle the multifaceted effects of the *APOE* genotype.

Our study has a number of limitations. First, we included individuals born over a range of 100 years. Although this brought the strength of allowing us to study generational effects, it may somewhat limit how much our findings on average disease durations may be generalized to newly diagnosed patients. Although our analysis was adjusted for year of birth, replication in larger cohorts of more recently diagnosed individuals is needed. Second, we were not able to consider the effects of lifestyle (e.g., exercise) or life course (e.g., socioeconomic position) factors on survival. Future

investigations should study the potential influence of lifestyle elements on survival rates, particularly in light of our finding that genetic factors contribute relatively little to the variance in disease duration we observed in our cohort. This is especially important to better understand the generalizability of our findings to individuals in other ADAD and sporadic AD cohorts. Third, cognitive presentations were classified as atypical on the basis that the initial symptoms did not involve memory but instead comprised behavioral change, language impairment, dyscalculia, or executive impairment. Atypical symptoms are often more difficult to recognize as signs of AD, leading to a possible underrepresentation of this group. Nonetheless, it is perhaps noteworthy that the atypical group had a longer disease duration, despite the possibility that symptoms may be noticed later, supporting the notion that there may be biological differences in those with atypical presentations, which underpin both the atypical presentation and the longer disease durations. Last, although we have included a relatively large number of cases, considering the rarity of ADAD, the sample size could be considered a limitation and further investigation of survival in larger ADAD cohorts will be an important direction for future research.

Multiple factors may contribute to phenotypic variability in ADAD. Characterizing and investigating variability in disease duration is the first step toward allowing patients and their families to plan for the future. A deeper understanding of variability in disease duration and the factors that may influence survival may also inform the interpretation of disease-modifying trials and potentially even highlight new avenues for targeting the disease.

Acknowledgment

The authors thank participants and their families for the generous support of this study; their clinical colleagues across the United Kingdom for referring patients; and present and past staff at the Dementia Research Centre for their contribution to their ongoing longitudinal study of familial Alzheimer disease. They are grateful to the MRC Prion Unit at UCL Queen Square Institute of Neurology for performing the genetic analysis.

Study funding

N.S. Ryan is supported by a University of London Chadburn Academic Clinical Lectureship (548951) and has a clinical research training fellowship (G0 900421) from the Medical Research Council. A. O'Connor is supported by an Alzheimer's Society clinical research training fellowship. N.C. Fox is supported by the Medical Research Council Clinical Senior Fellowship (GO 601846), the NIHR Biomedical Research Centre (540602), and the Medical Research Centre UK Dementia Research Institute Award. The Dementia Research Centre is an ARUK coordinating center and is grateful for support from the MRC Dementias Platform UK and the Rosetrees Trust. The study was undertaken at University College London Hospitals/ University College London that received a proportion of the funding from the Department of Health's NIHR Biomedical

Research Centers funding scheme. This work was supported by the UK Dementia Research Institute, which receives its funding from DRI Ltd, and funded by the UK Medical Research Council, Alzheimer's Society, and Alzheimer's Research UK. The funders of the study had no role in study design, data collection, data analysis, data interpretation, or writing of the report. The corresponding author had full access to the data and had final responsibility for the decision to submit for publication.

Disclosure

I. M. Pavisic, J.M. Nicholas, A. O'Connor, K. Lu, and N.S. Ryan report no disclosures relevant to this manuscript. H. Rice has previously provided consultancy for Roche. N.C. Fox has provided consultancy for Biogen and Roche, given educational lectures for Eli Lilly and GE Healthcare, and serves on a Data Safety Monitoring Committee for Biogen. Go to Neurology.org/NG for full disclosures.

Publication history

Received by *Neurology: Genetics* June 9, 2020. Accepted in final form July 21, 2020.

Appendix Authors

Name	Location	Contribution
Ivanna M. Pavisic, MRCS	Department of Neurodegenerative Diseases, Dementia Research Centre, UCL Queen Square Institute of Neurology, London, United Kingdom; UK Dementia Research Institute at University College London, United Kingdom	Conceived the manuscript, contributed to data collection, analyzed the data, and drafted the initial manuscript
Jennifer M. Nicholas, PhD	Department of Neurodegenerative Diseases, Dementia Research Centre, UCL Queen Square Institute of Neurology, London; Department of Medial Statistics, London School of Hygiene and Tropical Medicine, United Kingdom	Provided statistical support and critically revised the manuscript
Antoinette O'Connor, MRCP	Department of Neurodegenerative Diseases, Dementia Research Centre, UCL Queen Square Institute of Neurology, London; UK Dementia Research Institute at University College London, United Kingdom	Recruited participants, collected clinical data, and critically revised the manuscript
Helen Rice, MSc	Department of Neurodegenerative Diseases, Dementia Research Centre, UCL Queen Square Institute of Neurology, London; UK Dementia Research Institute at University College London, United Kingdom	Collected clinical data and critically revised the manuscript

Appendix (continued)

Name	Location	Contribution
Kirsty Lu, PhD	Department of Neurodegenerative Diseases, Dementia Research Centre, UCL Queen Square Institute of Neurology, London, United Kingdom, University College London	Provided support for the interpretation of results and critically revised the manuscript
Nick C. Fox, FMedSci	Department of Neurodegenerative Diseases, Dementia Research Centre, UCL Queen Square Institute of Neurology, London; UK Dementia Research Institute at University College London, United Kingdom	Principal investigator of the study and critically revised the manuscript
Natalie S. Ryan, MRCP, PhD	Department of Neurodegenerative Diseases, Dementia Research Centre, UCL Queen Square Institute of Neurology, London; UK Dementia Research Institute at University College London, United Kingdom	Conceived the manuscript, collected clinical data, and critically revised the manuscript

References

1. Armstrong R. Factors determining disease duration in Alzheimer's disease: a post-mortem study of 103 cases using the Kaplan-Meier estimator and Cox regression. *Biomed Res Int* 2014;2014:623487.
2. Bekris LM, Yu CE, Bird TD, Tsuang DW. Genetics of Alzheimer disease. *J Geriatr Psychiatry Neurol* 2010;23:213–227.
3. Sherrington R, Rogaev EI, Liang Y, et al. Cloning of a gene bearing missense mutations in early-onset familial Alzheimer's disease. *Nature* 1995;375:754–760.
4. Levy-Lahad E, Wasco W, Poorkaj P, et al. Candidate gene for the chromosome 1 familial Alzheimer's disease locus. *Science* 1995;269:973–977.
5. Goate A, Chartier-Harlin MC, Mullan M, et al. Segregation of a missense mutation in the amyloid precursor protein gene with familial Alzheimer's disease. *Nature* 1991;349:704–706.
6. Ryman DC, Acosta-Baena N, Aisen PS, et al. Symptom onset in autosomal dominant Alzheimer disease: a systematic review and meta-analysis. *Neurology* 2014;83:253–260.
7. Ryan NS, Nicholas JM, Weston PSJ, et al. Clinical phenotype and genetic associations in autosomal dominant familial Alzheimer's disease: a case series. *Lancet Neurol* 2016;15:1326–1335.
8. Koedam ELGE, Lauffer V, van der Vlies AE, van der Flier WM, Scheltens P, Pijnenburg YAL. Early-versus late-onset Alzheimer's disease: more than age alone. *J Alzheimers Dis JAD* 2010;19:1401–1408.
9. Ryan NS, Rossor MN. Correlating familial Alzheimer's disease gene mutations with clinical phenotype. *Biomark Med* 2010;4:99–112.
10. Kartsonaki C. Survival analysis. *Diagn Histopathol* 2016;22:263–270.
11. Shea YF, Chu LW, Chan AOK, Ha J, Li Y, Song Y-Q. A systematic review of familial Alzheimer's disease: differences in presentation of clinical features among three mutated genes and potential ethnic differences. *J Formos Med Assoc* 2016;115:67–75.
12. Canevelli M, Piscopo P, Talarico G, et al. Familial Alzheimer's disease sustained by presenilin 2 mutations: systematic review of literature and genotype-phenotype correlation. *Neurosci Biobehav Rev* 2014;42:170–179.
13. Janssen JC, Beck JA, Campbell TA, et al. Early onset familial Alzheimer's disease: mutation frequency in 31 families. *Neurology* 2003;60:235–239.
14. Beck J, Pittman A, Adamson G, et al. Validation of next-generation sequencing technologies in genetic diagnosis of dementia. *Neurobiol Aging* 2014;35:261–265.
15. Sinforiani E, Citterio A, Zucchella C, et al. Impact of gender differences on the outcome of Alzheimer's disease. *Dement Geriatr Cogn Disord* 2010;30:147–154.
16. Aminov RI. A brief history of the antibiotic era: lessons learned and challenges for the future. *Front Microbiol* 2010;1:134.
17. Ringman JM, Monsell S, Ng DW, et al. Neuropathology of autosomal dominant Alzheimer disease in the National Alzheimer Coordinating Center Database. *J Neuropathol Exp Neurol* 2016;75:284–290.
18. Mann DM, Pickering-Brown SM, Takeuchi A, Iwatsubo T. Members of the Familial Alzheimer's Disease Pathology Study Group. Amyloid angiopathy and variability in amyloid beta deposition is determined by mutation position in presenilin-1-linked Alzheimer's disease. *Am J Pathol* 2001;158:2165–2175.
19. Ryan NS, Biessels GJ, Kim L, et al. Genetic determinants of white matter hyperintensities and amyloid angiopathy in familial Alzheimer's disease. *Neurobiol Aging* 2015;36:3140–3151.
20. Hutton M, Hardy J. The presenilins and Alzheimer's disease. *Hum Mol Genet* 1997;6:1639–1646.
21. Wragg M, Hutton M, Talbot C. Genetic association between intronic polymorphism in presenilin-1 gene and late-onset Alzheimer's disease. Alzheimer's Disease Collaborative Group. *Lancet Lond Engl* 1996;347:509–512.
22. Arboleda-Velasquez JF, Lopera F, O'Hare M, et al. Resistance to autosomal dominant Alzheimer's disease in an APOE3 Christchurch homozygote: a case report. *Nat Med* 2019;25:1680–1683.
23. Acosta-Baena N, Sepulveda-Falla D, Lopera-Gómez CM, et al. Pre-dementia clinical stages in presenilin 1 E280A familial early-onset Alzheimer's disease: a retrospective cohort study. *Lancet Neurol* 2011;10:213–220.