

## NON-COMMUNICABLE DISEASE RISK FACTORS AND MORTALITY

# Sociodemographic distribution of non-communicable disease risk factors in rural Uganda: a cross-sectional study

Georgina AV Murphy,<sup>1,2\*</sup> Gershim Asiki,<sup>3</sup> Kenneth Ekoru,<sup>1,2,3</sup> Rebecca N Nsubuga,<sup>3</sup> Jessica Nakiyingi-Miiró,<sup>3</sup> Elizabeth H Young,<sup>1,2</sup> Janet Seeley,<sup>3,4,5</sup> Manjinder S Sandhu<sup>1,2†</sup> and Anatoli Kamali<sup>3,4†</sup>

<sup>1</sup>Department of Public Health & Primary Care, University of Cambridge, Cambridge, UK, <sup>2</sup>Wellcome Trust Sanger Institute, Hinxton, UK, <sup>3</sup>Medical Research Council/Uganda Virus Research Institute (MRC/UVRI), Uganda Research Unit on AIDS, Entebbe, Uganda, <sup>4</sup>London School of Hygiene and Tropical Medicine, London, UK and <sup>5</sup>School of International Development, University of East Anglia, Norwich, UK

\*Corresponding author. International Health Research Group, Department of Public Health & Primary Care, Strangeways Research Laboratory, Wort's Causeway, Cambridge, CB1 8RN, UK. E-mail: gm7@sanger.ac.uk

†These authors jointly directed this work.

---

**Accepted** 7 August 2013

**Background** Non-communicable diseases (NCDs) are rapidly becoming leading causes of morbidity and mortality in low- and middle-income countries, including those in sub-Saharan Africa. In contrast to high-income countries, the sociodemographic distribution, including socioeconomic inequalities, of NCDs and their risk factors is unclear in sub-Saharan Africa, particularly among rural populations.

**Methods** We undertook a cross-sectional population-based survey of 7809 residents aged 13 years or older in the General Population Cohort in south-western rural Uganda. Information on behavioural, physiological and biochemical risk factors was obtained using standardized methods as recommended by the WHO STEPwise Approach to Surveillance. Socioeconomic status (SES) was determined by principal component analysis including household features, ownership, and occupation and education of the head of household.

**Results** SES was found to be associated with NCD risk factors in this rural population. Smoking, alcohol consumption (men only) and low high-density lipoprotein (HDL) cholesterol were more common among those of lower SES. For example, the prevalence of smoking decreased 4-fold from the lowest to the highest SES groups, from 22.0% to 5.7% for men and 2.2% to 0.4% for women, respectively. In contrast, overweight, raised blood pressure, raised HbA1c (women only) and raised cholesterol were more common among those of higher SES. For example, the prevalence of overweight increased 5-fold from 2.1% to 10.1% for men, and 2-fold from 12.0% to 23.4% for women, from the lowest to highest SES groups respectively. However, neither low physical activity nor fruit, vegetable or staples consumption was associated with SES. Furthermore, associations between NCD risk factors and SES were modified by age and sex.

**Conclusions** Within this rural population, NCD risk factors are common and vary both inversely and positively across the SES gradient. A better understanding of the determinants of the sociodemographic distribution of NCDs and their risk factors in rural sub-Saharan African populations will help identify populations at most risk of developing NCDs and help plan interventions to reduce their burden.

**Keywords** Uganda, sociodemographic, non-communicable diseases, risk factors, epidemiological transition

## Introduction

Sub-Saharan Africa (SSA) is undergoing epidemiological transition. Recent estimates and projections suggest that SSA is one of the regions with the highest proportion of premature deaths due to non-communicable diseases (NCDs) in the world.<sup>1</sup> In 2004, around 1.2 million deaths in Africa were thought to be attributable to cardiovascular disease (CVD).<sup>2</sup> This figure is expected to double by 2030.<sup>3</sup> In the same context, the number of people with diabetes in SSA almost doubled from 7 million in 2000 to 12.1 million in 2010. This number is expected to double again to 23.9 million by 2030.<sup>4</sup>

The increase in NCDs and their risk factors in low- and middle-income countries (LMICs) is often considered to be due to an increase in urbanization, a transition from a 'traditional healthy' to a 'modern unhealthy' diet and lifestyle, and also an ageing society.<sup>5-7</sup> These individual transitions are thought to be factors in determining an overall epidemiological transition. The epidemiological transition describes a theory for which countries transition from a burden of mostly infectious diseases to mostly NCDs as they undergo economic and social development.<sup>7</sup> Many African populations are experiencing the early stages of the epidemiological transition, as the subcontinent continues to develop, to lower child mortality, and to treat HIV.

However, the impact of these transitions on health is not the same for all sectors of the population. Social inequalities, and their relationship with the distribution and treatment of NCDs and their risk factors, have been well described in high-income countries.<sup>8,9</sup> However, less is known about the socioeconomic distribution of NCDs and their risk factors in LMICs, especially not among rural SSA populations.<sup>10</sup> Given that the majority of Africans still live in rural areas,<sup>11</sup> it is important to understand the heterogeneity and social inequalities which may exist within these rural populations. Variation in diet, education, types of occupation, housing, exposure to globalized media and products, access to healthcare and treatment, and the prevalence of infection, are just some examples of heterogeneity which may affect risk of NCDs. A clearer understanding of the

sociodemographic distribution of NCD risk factors may help towards identifying the underlying determinants of NCDs, NCD risk factors and health inequality.<sup>8,9</sup> We therefore assessed the sociodemographic distribution of NCD risk factors in a rural Ugandan population.

## Methods

We conducted a cross-sectional population-based survey of participants aged 13 years and older within the Medical Research Council/Uganda Virus Research Institute (MRC/UVRI) General Population Cohort (GPC) Round 22 in 2011. Full details of the cohort have been published elsewhere.<sup>12</sup> Briefly, the cohort comprises all residents (52% aged  $\geq 13$  years, men and women in equal proportions) within one-half of a rural sub-county, not far from Lake Victoria. Houses are mostly scattered across the county in villages defined by administrative boundaries, rather than socioeconomic centres. There are no tarmacked roads and buildings are mostly semi-permanent structures built from locally available materials.<sup>13</sup> Participants are mostly subsistence farmers, literacy levels are comparatively low and the main income-earning activity is trading in bananas, coffee, beans and fish. The main documented change in health status over the past 20 years has been due to the impact of HIV.

## Data collection

Interviewer-administered questionnaires were used to collect demographic data on individual and household socioeconomic indicators. Lifestyle and health history data were collected using an adapted World Health Organization (WHO) STEPwise Approach to Surveillance questionnaire.<sup>14</sup>

Standardized procedures were used for all biophysical measurements. Blood pressure was measured in the sitting position three times with resting intervals of 5 min, using the Omron M4-I, for participants who had been resting for at least 15 min before measurement. Blood pressure was taken as the mean of the second and third reading. Height and weight were measured using the Leicester Stadiometer to the

nearest 0.1 cm and the Seca 761 mechanical scales to the nearest kg, respectively. Body mass index (BMI) was calculated as weight (kg) divided by height squared ( $\text{m}^2$ ). Waist and hip circumferences were measured twice over one layer of light clothing using the Seca 201 Ergonomic Circumference Measuring Tape to the nearest 0.1 cm; a third measurement was taken if the first two measurements differed by more than 3 cm. Waist and hip circumferences were taken as the mean of two (or three where applicable) measurements. Women in their second or third trimester of pregnancy were excluded from physical measurement.

Biochemical analysis was performed using the Cobas Integra 400 plus chemistry analyser to determine HbA1c from whole-blood samples, and lipid profiles for total cholesterol, high density lipoprotein (HDL) cholesterol and triglycerides from serum samples. The MRC/UVRI Entebbe laboratories were enrolled in National Health Laboratory Service (NHLS) and College of American Pathologists (CAP) external quality control programmes.

### Statistical analysis

Data were collected on ultra-mobile personal computers using a tool designed in Microsoft Access, and stored in Microsoft Access. Data were analysed using the Stata 11 software package (StataCorp, College Station, TX, USA) for Windows and Macintosh. Analyses were restricted to participants with complete data, with the exception of 11.8% of participants missing data on diet staples. In total 12.1% of participants were excluded from analyses. A list of the source of missing data is outlined in [Supplementary Table S1](#) (available as [Supplementary data at IJE online](#)). Briefly, missing data on socioeconomic status (7.0%) were the main contributors to missing data, and 3.3% of participants were missing data on BMI and/or waist circumference. Otherwise, the amount of missing data per variable was small (<1%). [Supplementary Table S2](#) (available as [Supplementary data at IJE online](#)) presents a sensitivity analysis for those excluded compared with those included in the analysis.

SES was constructed on a household level using principal component analysis (PCA).<sup>15</sup> The first component of the PCA output was taken to be the continuous SES variable. This continuous SES variable was then categorized into quintiles to produce a discrete SES variable with categories defined as lowest, lower-middle, middle-higher and highest SES. The household socioeconomic variables included in the PCA were: roof material type, roof quality, wall material type, ratio of number of rooms in a house to number of people living in that household, ownership of house and land, employment of workers for household or land, level of education reached by the head of household and occupation type of the head of household. All individuals identified as being part of

the same household were assigned the same SES value. The distribution of SES variables included in the PCA by SES quintiles is outlined in [Supplementary Table S3](#).

The distribution of each risk factor was examined by age, SES and sex. We calculated prevalences with 95% confidence intervals for binary variables and means with 95% confidence intervals for continuous variables. Prevalences and means of NCD risk factors were adjusted for multi-level mixed-effects, including random-effects for data clustered into households and villages. Prevalences and means by age categories were further adjusted by SES as a continuous measure. Prevalences by SES categories were further adjusted for age as a continuous measure.

We assessed trends in age and SES, and sex differences for each outcome by performing Poisson regression for binary variables and linear regression for continuous variables. The normality of distribution of continuous variables was assessed before analysis and, where necessary, skewed distributions were log transformed. Fully adjusted models were multi-level mixed-effects Poisson and linear regression models, including random-effects for data clustered into households and villages. There was a total of 2983 households, with an average of 2.3 participants per household (range 1–11) and 119.3 households per village (range 44–256), across 25 villages.

To assess whether demographic factors modify the association between NCD risk factors and SES, a Poisson regression model was performed for each NCD risk factor and an interaction term for sex with SES or age (Model A). A second Poisson model was performed without an interaction term (Model B). Models A and B were then compared using a likelihood ratio test with one degree of freedom, and *P*-values were reported.

### Definitions

Low physical activity was defined as achieving less than 5 days a week of any combination of walking, moderate- or vigorous-intensity activities and less than 600 min of physical activity per week.<sup>16</sup> Insufficient fruit and vegetable consumption was defined as <5 servings of fruit or vegetables a day. Staples included food such as posho (maize), matooke (banana), cassava, sweet potato and rice. High staple consumption was defined as above the 75th percentile of the population. Raised blood pressure was defined as systolic  $\geq 140$  mmHg or diastolic  $\geq 90$  mmHg or reported treatment for raised blood pressure. Abdominal obesity was defined as a waist circumference  $\geq 94$  cm for men and  $\geq 80$  cm for women. Those with a BMI  $\geq 25$  kg/m<sup>2</sup> were categorized as overweight. Abnormal lipids were defined as follows: raised total cholesterol  $>5.2$  mmol/l, low HDL cholesterol  $<1.0$  (men) or  $<1.3$  (women) mmol/l, raised triglycerides  $>1.7$  mmol/l.<sup>14,17,18</sup> Raised HbA1c was defined as HbA1c  $>6.5\%$ .<sup>19</sup>

## Ethics

The study was approved by the Science and Ethics Committee of the Uganda Virus Research Institute (UVRI), the Ugandan National Council for Science and Technology and the East of England-Cambridge South (formerly Cambridgeshire 4) NHS Research Ethics Committee UK.

## Results

A total of 7809 participants were surveyed; 942 were excluded from analysis due to incomplete data, leaving 6867 (55% women) for the present analysis, representing 83% (6867/8309) of the population invited to take part in the study (Supplementary Tables S1 and S2, available as Supplementary data at *IJE* online, outline the distribution of missing data). The socio-demographic characteristics of the study population are shown in Table 1. This study population was young, with a mean age of 34.4 years (32.8 years in men and 35.6 years in women). The majority (75.2%) of participants were from the Baganda tribe, the main tribal group in the region and 40% of participants had less than complete primary education. Farming was the most common primary source of livelihood. Table 2 outlines the distribution of household socio-economic indicators for men and women by age group. Overall SES decreased with age for both men and women ( $P$ -value  $<0.001$ ) and men had only slightly higher SES than women ( $P$ -value 0.088).

Among self-reported lifestyle risk factors in this population we found low consumption of fruit and vegetables to have the highest prevalence (75.8%), followed by low physical activity (29.8%), weekly consumption of alcohol (11.4%) and current daily smoking (6.5%) (Table 3). The prevalences of overweight and abdominal obesity were found to be 11.8% and 17.7%, respectively. Raised blood pressure was found among 16.5% of the population. The most common lipid risk factor was low HDL cholesterol, which had a prevalence of 71.8%. In contrast, only 5.2% and 13.2% of the population had raised total cholesterol and raised triglycerides, respectively. Raised HbA1c was found in only 0.8% of the population.

Marked differences were seen in the prevalence of risk factors between men and women (Table 3). Smoking and weekly alcohol consumption were more common in men than women (13.1% vs 1.3% and 19.1% vs 5.7%, respectively,  $P$ -value  $<0.001$  for all). However, low physical activity, overweight and abdominal obesity were much more common in women than men (36.7% vs 20.8%, 16.9% vs 5.2%, and 30.0% vs 1.5%, respectively,  $P$ -value  $<0.001$  for all). Consistent with the differences in overweight and abdominal obesity between men and women, lipid profiles were worse in women. By contrast, no marked difference between men and women was found in the prevalence of raised blood pressure (16.9% vs 16.1%,  $P$ -value 0.443) or raised HbA1c (0.6% vs 0.9%,  $P$ -value 0.166).

We found the levels of most NCD risk factors to be higher among older than younger age groups ( $P$ -value  $<0.001$ ) (Table 4). Notable exceptions were low fruit and vegetable consumption, which showed no clear relationship with age for women ( $P$ -value 0.757) and a weak relationship with age for men ( $P$ -value 0.033), and high staple consumption which showed no evidence for being related to age for men ( $P$ -value 0.289) or women ( $P$ -value 0.203). HDL cholesterol, which is considered a protective factor, increased across age groups ( $P$ -value  $<0.001$ ).

Whereas smoking, alcohol consumption (men only) and low HDL cholesterol were more common in the lower SES group, we found that overweight, abdominal obesity, raised blood pressure, raised total cholesterol and raised HbA1c (women only) were more common in the higher SES group (Table 5). Although overweight was more common among those of higher SES ( $P$ -value  $<0.001$  for men and women), low physical activity ( $P$ -value 0.230 for men, 0.397 for women), low fruit and vegetable consumption ( $P$ -value 0.499 for men, 0.299 for women) and high staples consumption ( $P$ -value 0.365 for men, 0.088 for women) showed no clear trend with SES.

Women and those of higher SES were more likely to report having previously been screened for raised blood pressure and diabetes than men and those of lower SES, respectively (Tables 3 and 5). No marked difference between men and women or SES groups was found with regard to screening for cholesterol. Furthermore, women and those of higher SES were also more likely than men and those of lower SES, respectively, to report having been diagnosed with raised blood pressure. However, no substantial differences were seen by sex or SES for treatment of raised blood pressure.

Figure 1 illustrates the interrelation between socio-demographic factors and NCD risk factors. These analyses suggest that the associations among socio-demographic factors and NCD risk factors may be complex. Exploratory analyses showed that the associations between SES and low physical activity ( $P$ -value 0.0063 for likelihood ratio test), overweight ( $P$ -value 0.0004), abdominal obesity ( $P$ -value 0.0031), raised total cholesterol ( $P$ -value 0.0082) and raised triglycerides ( $P$ -value 0.0001) were modified by age; and the association between SES and abdominal obesity ( $P$ -value  $<0.0001$ ) was modified by sex (Supplementary Table S4, available as Supplementary data at *IJE* online). Furthermore, modification by sex was also found for the association between age and low physical activity ( $P$ -value  $<0.0001$ ), abdominal obesity ( $P$ -value 0.0015), raised blood pressure ( $P$ -value 0.0002) and low HDL cholesterol ( $P$ -value  $<0.0001$ ). These analyses suggest that the strength of association between SES and some NCD risk factors may not be the same for all age groups or for both men and women. Additionally, the strength of association between age and some NCD risk factors may also differ between men and women.

**Table 1** Sociodemographic characteristics of participants of the General Population Cohort Study, 2011

Variable	Men ( <i>n</i> =3071) <i>n</i> (%)	Women ( <i>n</i> =3796) <i>n</i> (%)	Total ( <i>n</i> =6867) <i>n</i> (%)
Age groups (years)			
13–19	1085 (35.3)	1013 (26.7)	2098 (30.6)
20–29	558 (18.2)	711 (18.7)	1269 (18.5)
30–39	455 (14.8)	679 (17.9)	1134 (16.5)
40–49	407 (13.3)	551 (14.5)	958 (14.0)
≥50	566 (18.4)	842 (22.2)	1408 (20.5)
Education			
Still in education	938 (30.5)	897 (23.6)	1835 (26.7)
Less than or incomplete primary	1130 (36.8)	1654 (43.6)	2784 (40.5)
Completed primary only	472 (15.4)	584 (15.4)	1056 (15.4)
Above primary	531 (17.3)	661 (17.4)	1192 (17.4)
Primary source of livelihood <sup>a</sup>			
Subsistence farmers	1016 (47.6)	1754 (60.5)	2770 (55.0)
Cash crop farmer	446 (20.9)	406 (14.0)	852 (16.9)
Looked after by others	96 (4.5)	344 (11.9)	440 (8.74)
Other	575 (27.0)	396 (13.7)	971 (19.3)
Occupation type of head of household			
Unemployed	1905 (62.0)	2618 (69.0)	4523 (65.9)
Unskilled labour	111 (3.6)	68 (1.8)	179 (2.6)
Skilled labour	145 (4.7)	103 (2.7)	248 (3.6)
Trader	733 (23.9)	761 (20.1)	1494 (21.8)
Property owners	30 (1.0)	41 (1.1)	71 (1.0)
Professional	147 (4.8)	205 (5.4)	352 (5.1)
Marital status <sup>b</sup>			
Never married	1485 (48.4)	1186 (31.3)	2671 (38.9)
Currently married	1287 (42.0)	1649 (43.5)	2936 (42.8)
Divorced/widowed	295 (9.6)	956 (25.2)	1251 (18.2)
Religion <sup>c</sup>			
Christian	2322 (76.5)	2826 (75.3)	5148 (75.8)
Muslim	712 (23.5)	929 (24.7)	1641 (24.2)
Other/none	2 (0.1)	3 (0.1)	5 (0.1)
Tribe <sup>d</sup>			
Baganda	2248 (74.1)	2854 (76.0)	5102 (75.2)
Banyarwanda (Rwandan origin)	454 (15.0)	545 (14.5)	999 (14.7)
Other	330 (10.9)	356 (9.5)	686 (10.1)

<sup>a</sup>*n*=5034 for total population, *n*=2133 for men and *n*=2900 for women.

<sup>b</sup>*n*=6858 for total population, *n*=3067 for men and *n*=3791 for women.

<sup>c</sup>*n*=6794 for total population, *n*=3036 for men and *n*=3758 for women.

<sup>d</sup>*n*=6787 for total population, *n*=3032 for men and *n*=3755 for women.

## Discussion

In this rural population in south-western Uganda, we found a clear gradient in SES status. SES was found to be associated with several NCD risk factors, yet these associations were inconsistent, with some NCD risk factors being positively associated and some

inversely associated. Furthermore, these associations might be modified by other sociodemographic factors. In contrast to urban-rural assessments, our findings suggest that social inequalities may exist within rural populations. These data may help us towards identifying the principal causes and social determinants of

**Table 2** Distribution of socioeconomic indicators by age category for men and women

Variable	Men's age group					Women's age group				
	13-19 (n=1085)	20-29 (n=558)	30-39 (n=455)	40-49 (n=407)	50+ (n=566)	13-19 (n=1013)	20-29 (n=711)	30-39 (n=679)	40-49 (n=551)	50+ (n=842)
<b>Mean SES (SD)</b>	0.04 (1.66)	0.02 (1.74)	0.79 (1.73)	-0.90 (1.69)	-0.32 (1.66)	0.10 (1.61)	0.15 (1.53)	0.09 (1.71)	0.09 (1.71)	-0.24 (1.55)
Roof type/material (%)										
Plastic sheeting	0.00	0.00	0.22	0.00	0.00	0.10	0.00	0.15	0.00	0.00
Thatch	5.25	8.24	9.89	10.81	8.83	6.32	8.58	7.51	5.99	5.34
Mixed iron/thatch	0.18	0.00	0.44	0.74	0.71	0.30	0.14	0.15	0.36	0.48
Mixed iron/tile	0.09	0.00	0.00	0.00	0.35	0.00	0.00	0.15	0.18	0.24
Iron sheets	93.64	91.40	88.79	87.47	89.22	92.20	91.00	91.61	62.38	92.16
Tile	0.83	0.36	0.66	0.98	0.88	1.09	0.28	0.44	1.09	1.78
Roof quality (%)										
Poor	12.17	15.05	16.70	17.69	18.90	10.66	10.83	14.29	12.52	13.18
Fair	32.17	30.65	27.47	35.63	30.39	31.98	28.69	30.19	33.76	33.25
Good	55.67	54.30	55.82	46.68	50.71	57.35	60.48	55.52	53.72	53.56
Wall type/material (%)										
Mud and pole	17.79	23.12	18.46	20.88	31.63	17.18	16.32	17.38	20.69	23.28
Mud and brick	1.29	0.72	0.66	0.98	1.06	0.99	0.70	0.88	0.91	1.78
Brick	48.11	41.76	52.31	50.12	38.52	46.50	45.29	49.93	44.83	43.59
Brick and concrete	23.87	26.16	22.86	20.64	19.08	25.96	29.68	23.42	24.50	22.45
Concrete	8.94	8.24	5.71	7.37	9.72	9.38	8.02	8.39	9.07	8.91
<b>Mean number of rooms per person (SD)</b>	1.16 (0.58)	1.38 (0.89)	1.55 (0.96)	1.47 (0.99)	1.64 (1.22)	1.15 (0.63)	1.58 (1.05)	1.55 (1.06)	1.49 (1.10)	1.78 (1.24)
Own their own house (%)										
No	4.61	23.30	18.46	15.48	9.36	7.80	25.18	18.11	10.89	5.94
Yes	95.39	76.70	81.54	84.52	90.64	92.20	74.82	81.89	89.11	94.06
Own property for renting (%)										
No	92.26	93.37	92.97	91.40	95.58	91.51	92.97	92.78	90.56	93.59
Yes	7.74	6.63	7.03	8.60	4.42	8.49	7.03	7.22	9.44	6.41
Status of household land (%)										
Borrowed	1.57	4.84	3.52	6.88	6.18	3.36	4.50	4.42	3.81	2.73
Rented	2.95	18.46	16.70	9.34	3.71	5.23	21.94	13.99	7.62	3.80
Owned	95.48	76.70	79.78	83.78	90.11	91.41	73.56	81.59	88.57	93.47
Own additional land (other than land with house on it) (%)										
No	50.14	55.02	45.71	50.37	58.13	47.98	50.21	47.57	47.91	60.33
Yes	49.86	44.98	54.29	49.63	41.87	52.02	49.79	52.43	52.09	39.67
<b>Mean size of other land owned (m<sup>2</sup>) (SD)</b>	5288.9 (16142.9)	4532.8 (15828.3)	3895.7 (5603.3)	4126.4 (7123.1)	4404.4 (9075.6)	5333.2 (15498.8)	3699.7 (7116.8)	4374.7 (14920.6)	5141.2 (13528.8)	3571.0 (8112.2)
Type of workers employed (%)										
None	75.39	75.99	75.82	75.43	78.98	73.54	77.22	74.96	72.60	75.18

(continued)

Table 2 Continued

Variable	Men's age group					Women's age group				
	13-19 (n=1085)	20-29 (n=558)	30-39 (n=455)	40-49 (n=407)	50+ (n=566)	13-19 (n=1013)	20-29 (n=711)	30-39 (n=679)	40-49 (n=551)	50+ (n=842)
Temporary workers	20.83	19.53	22.42	22.11	18.02	23.49	19.55	22.53	23.41	21.73
Permanent workers	3.78	4.48	1.76	2.46	3.00	2.96	3.23	2.50	3.99	3.09
<b>Mean number of workers employed (SD)</b>	0.70 (1.60)	0.66 (1.6)	0.78 (2.00)	0.63 (1.41)	0.62 (1.56)	0.68 (1.54)	0.59 (1.38)	0.67 (1.52)	0.79 (1.79)	0.59 (1.47)
Occupation type of head of household (%)										
Unemployed	67.10	55.20	53.41	59.21	68.02	71.27	60.06	64.06	70.78	76.48
Unskilled labour	1.20	5.02	6.15	3.93	4.59	1.18	3.52	2.06	1.63	0.95
Skilled labour	3.13	9.32	8.13	2.70	1.94	2.37	3.94	3.24	2.18	2.02
Traders	24.79	22.04	22.20	26.29	23.50	20.04	21.24	21.50	19.78	18.05
Property owners	0.74	1.61	1.98	0.74	0.18	0.49	2.53	1.62	1.09	0.12
Professionals	3.04	6.81	8.13	7.13	1.77	4.64	8.72	7.51	4.54	2.38
<b>Mean education level of head of household (SD)</b>	8.04 (4.45)	9.18 (4.83)	9.44 (4.87)	8.70 (4.62)	7.61 (4.79)	8.30 (4.60)	9.96 (4.91)	9.18 (4.98)	7.88 (4.60)	6.60 (4.66)

P-values were determined by fitting multi-level mixed-effects Poisson regression models with random-effects to adjust for clustering at household and village levels.

NCDs and their risk factors in rural African populations. Effective actions are needed to address NCDs in disadvantaged groups in order to achieve a substantial reduction in the total NCD burden, therefore making health inequalities an essential priority.<sup>10,20</sup>

The overall increase in NCD risk factors in developing countries is often considered to be largely due to three key transitions: urbanization, nutritional transition and demographic transition.<sup>5-7</sup> At the early stages of these transitions, risk factors tend to be concentrated among urban dwellers and older people.<sup>6,21</sup> Uganda may be undergoing the early stages of epidemiological transition, rapid urbanization and slow changes to demography, though the fertility rate remains high. However, it should not be presumed that the accompanying increase in burden of NCDs is restricted to older people and those in urban settings. In this study we found that NCD risk factors were present among rural dwellers, not all factors were highest among those of higher SES and, although risk factors were more common among older people, there was still a sizeable burden in this relatively young population. Furthermore, the reported burdens of low fruit and vegetable consumption and low levels of physical activity were especially high even though the majority of the population were farmers. For example, the prevalence of low physical activity in this population was comparable to the global estimate of 31% worldwide.<sup>22</sup> Other studies of young rural African populations have also found a substantial burden of NCDs and their risk factors (Table 6). Caution should therefore be exercised in making presumptions about NCD risk for individual populations based on transition theories which are designed to describe large-scale changes over time. Rural populations, and the heterogeneity within them, should therefore be considered in addition to urban areas when designing initiatives aimed at reducing NCD risk factors. The underlying causes of these factors should also be further investigated within rural settings. This is particularly important given that the majority of Africans still reside in rural areas.<sup>11,23</sup>

As differences in SES and demography evolve across and within populations with the epidemiological transition, it is important to understand the lifestyle implications which may affect health. The explanations for the differences in NCD risk factors between sociodemographic groups found in this study remain unclear. For example, overweight has frequently been reported as being associated with higher SES within LMICs, in contrast to its association with lower SES in high-income countries.<sup>24-28</sup> Explanations for these observations often centre on an increased availability of food and a decrease in physical labour and activity, coupled with an environment of food insecurity and cultural factors among those of higher SES in LMICs.<sup>21,27</sup> However, although we found that overweight and abdominal obesity were more common

**Table 3** Prevalences of NCD risk factors and healthcare factors by sex

Variable	Total (n=6867) % (95% CI)	Men (n=3071) % (95% CI)	Women (n=3796) % (95% CI)	P-value*	Adjusted P-value**
<b>Lifestyle risk factors</b>					
Current smoker	6.5 (5.8–7.1)	13.1 (11.7–14.5)	1.3 (9.5–16.8)	<0.001	<0.001
Alcohol user	34.6 (30.6–38.6)	40.2 (35.3–45.2)	30.3 (26.6–34.0)	<0.001	<0.001
Weekly drinker	11.4 (9.6–13.3)	19.1 (15.9–22.3)	5.7 (4.6–6.8)	<0.001	<0.001
Low physical activity	29.8 (28.2–31.5)	20.8 (19.0–22.6)	36.7 (34.5–39.1)	<0.001	<0.001
Low fruit and vegetable consumption	75.8 (72.4–79.2)	74.5 (70.4–78.6)	76.9 (72.3–80.8)	0.260	0.256
High staple consumption <sup>a</sup>	17.2 (10.3–24.1)	18.3 (10.9–25.7)	16.3 (9.7–22.9)	0.039	0.029
<b>Physical risk factors</b>					
Overweight	11.8 (10.6–13.1)	5.2 (4.3–6.1)	16.9 (15.0–18.8)	<0.001	<0.001
Abdominal obesity	17.7 (16.4–19.0)	1.5 (1.1–2.0)	30.0 (27.8–32.3)	<0.001	<0.001
Raised blood pressure	16.5 (15.3–17.6)	16.9 (15.3–18.5)	16.1 (14.8–17.5)	0.532	0.443
<b>Cardiometabolic risk factors</b>					
Raised total cholesterol	5.2 (4.3–6.1)	3.1 (2.4–3.9)	6.7 (5.5–8.0)	<0.001	<0.001
Low HDL cholesterol	71.8 (69.5–74.1)	60.7 (57.8–63.6)	81.0 (77.9–84.1)	<0.001	<0.001
Raised triglycerides	13.2 (12.2–14.2)	12.4 (11.0–13.7)	13.9 (12.6–15.2)	0.091	0.092
Raised HbA1c	0.8 (0.4–1.1)	0.6 (0.3–1.0)	0.9 (0.4–1.3)	0.121	0.166
<b>Health screening</b>					
Blood pressure screen	49.4 (46.6–52.3)	43.4 (40.3–46.5)	54.1 (50.7–57.5)	<0.001	<0.001
Diabetes screen	23.2 (19.7–26.7)	21.3 (17.8–24.8)	24.6 (20.8–28.5)	0.005	0.004
Cholesterol screen	1.0 (0.7–1.4)	1.1 (0.6–1.5)	1.0 (0.7–1.4)	0.907	0.876
<b>Diagnosis</b>					
Diagnosed with raised blood pressure	5.9 (5.1–6.8)	3.9 (3.1–4.7)	7.4 (6.3–8.6)	<0.001	<0.001
Diagnosed with diabetes	1.2 (0.5–1.9)	1.2 (0.4–2.0)	1.2 (0.5–2.0)	0.794	0.811
Diagnosed with raised cholesterol	0.4 (0.2–0.6)	0.4 (0.2–0.7)	0.4 (0.2–0.6)	0.747	0.750
<b>Treatment among those diagnoses</b>					
On treatment for raised blood pressure	47.5 (41.0–54.1)	42.1 (30.4–53.7)	49.7 (41.8–57.5)	0.297	0.310
On treatment for diabetes	29.2 (18.0–40.4)	35.1 (16.0–54.2)	25.0 (11.4–38.6)	0.391	0.391
On treatment for raised cholesterol	23.5 (7.2–39.8)	18.6 (-0.0–39.9)	28.0 (3.1–5.3)	0.659	0.584

Prevalences are adjusted for multi-level mixed-effects, with random-effects to account for clustering at household and village levels.

CI, confidence interval.

\*P-values are for the difference between men and women and were determined by fitting Poisson regression models and adjusting for age.

\*\*Adjusted P-values were determined by fitting multi-level mixed-effects Poisson regression models adjusted for age and SES and with random-effects to adjust for clustering at household and village levels.

<sup>a</sup>n=6056 for total population, n=2701 for men and n=3355 for women.

in higher SES groups, we did not find any association between SES and low physical activity, or consumption of fruit, vegetables or staples. It is therefore unclear what the causes of overweight and abdominal obesity are in this population and how they differ for women and those of higher SES leading to a higher prevalence in these sociodemographic groups. More defined studies of lifestyle factors, including closer examination of diet components such as fat and sugar consumption, may be needed to better

understand these causes. We also found that smoking and alcohol consumptions were more common among those of lower SES, which is in keeping with findings from both LMICs and high-income countries.<sup>28–32</sup> The reasons for this also remain unclear, although it may reflect a better understanding and knowledge of the adverse effects of smoking among those of higher SES. Given that smoking and weekly alcohol consumption are substantially more common among men than women, there may also be cultural factors



**Table 4** Distribution of SES-adjusted prevalences of lifestyle risk factors and cardiometabolic risk factors by age and sex

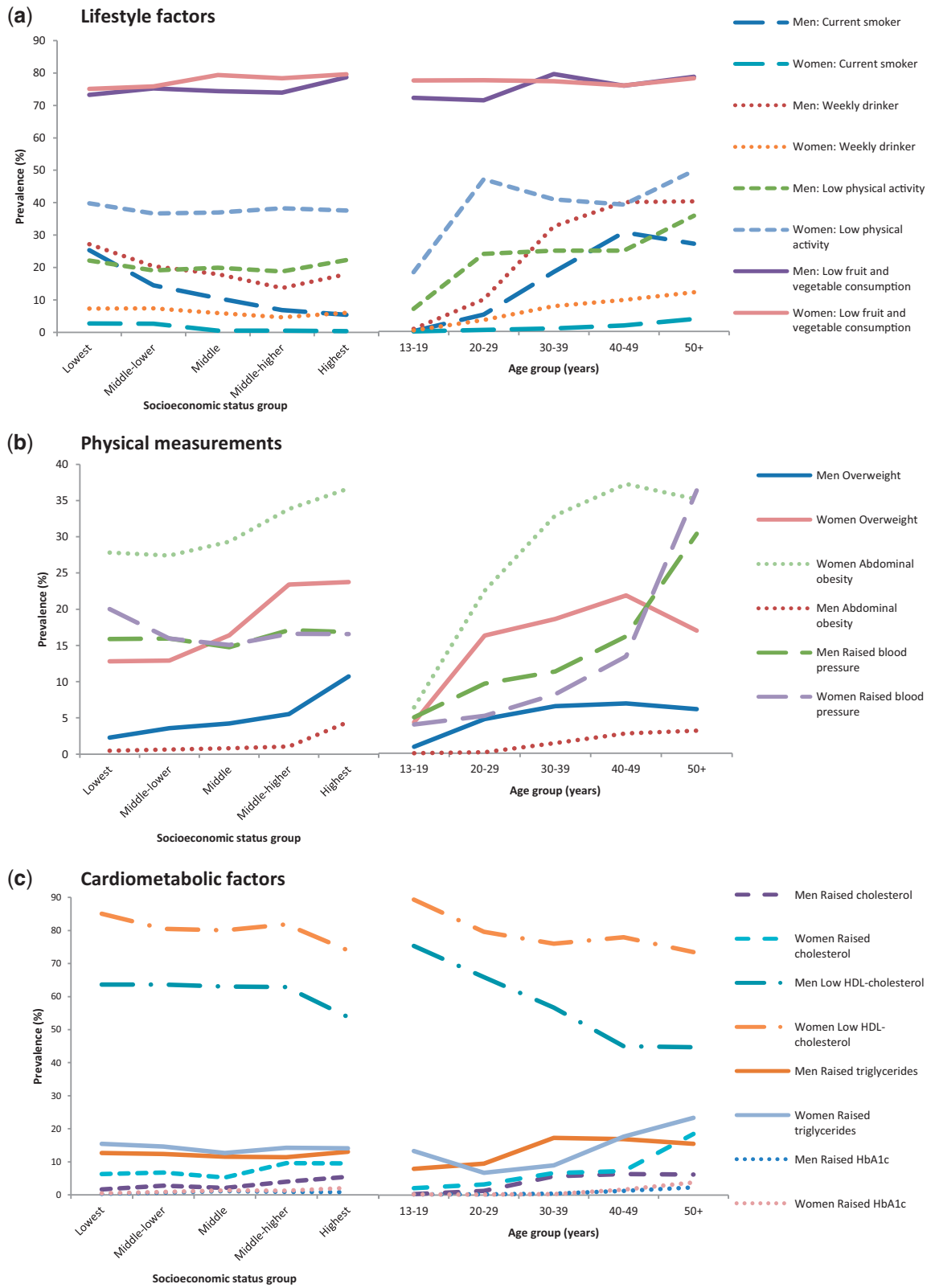
Variable	Men										Women				
	13-19 (n=1085)	20-29 (n=558)	30-39 (n=455)	40-49 (n=407)	50+ (n=566)	Unadjusted P-value	Adjusted P-value*	13-19 (n=1013)	20-29 (n=711)	30-39 (n=679)	40-49 (n=551)	50+ (n=842)	Unadjusted P-value	Adjusted P-value*	
<b>Lifestyle risk factors, % (95% CI)</b>															
Current smoker	0.1 (-0.1-0.3)	5.2 (3.3-7.2)	18.9 (14.8-23.1)	30.1 (24.5-35.4)	25.1 (21.0-29.2)	<0.001	<0.001	0.0 (0.0-0.0)	0.4 (-0.1-1.0)	0.9 (0.2-1.6)	1.8 (0.7-3.0)	3.5 (2.3-4.7)	<0.001	<0.001	
Alcohol user	8.5 (6.6-10.4)	31.5 (26.1-36.9)	58.7 (49.9-67.5)	65.2 (55.5-74.9)	70.2 (60.9-79.4)	<0.001	<0.001	6.4 (4.7-8.1)	24.0 (19.6-28.3)	41.4 (34.9-47.9)	42.3 (35.3-49.2)	51.7 (44.4-59.0)	<0.001	<0.001	
Weekly drinker	0.7 (0.2-1.2)	9.4 (6.7-12.1)	30.6 (24.5-36.8)	38.5 (31.2-45.9)	38.6 (32.0-45.3)	<0.001	<0.001	0.3 (-0.0-0.6)	2.9 (1.6-4.2)	6.6 (4.4-8.9)	8.8 (5.9-11.7)	11.1 (8.1-14.1)	<0.001	<0.001	
Low physical activity	6.9 (5.3-8.5)	23.8 (19.5-28.0)	24.6 (19.9-29.4)	24.8 (19.8-29.8)	35.8 (30.6-41.1)	<0.001	<0.001	18.4 (15.7-21.0)	47.1 (42.1-52.2)	40.9 (36.1-45.8)	39.3 (34.1-44.5)	49.9 (45.1-54.7)	<0.001	<0.001	
Low fruit and vegetable consumption	71.9 (66.1-77.6)	70.7 (63.2-78.2)	78.3 (69.6-87.0)	75.2 (66.3-84.1)	79.1 (71.1-87.1)	0.049	0.033	77.5 (71.8-83.1)	77.5 (70.8-84.3)	77.2 (70.4-84.0)	76.0 (68.5-83.4)	78.6 (72.3-84.8)	0.840	0.773	
High staple consumption <sup>a</sup>	16.4 (10.1-22.7)	20.3 (12.3-28.4)	21.8 (13.1-30.5)	21.6 (12.8-30.4)	18.2 (10.8-25.5)	0.272	0.289	13.5 (8.3-18.8)	19.2 (11.7-26.6)	19.6 (12.0-27.2)	18.8 (11.3-26.3)	16.6 (10.1-23.1)	0.692	0.669	
<b>Physical risk factors, mean (95% CI)</b>															
Body mass index (BMI) (kg/m <sup>2</sup> )	18.5 (18.3-18.7)	21.3 (21.0-21.5)	21.3 (21.0-21.6)	20.9 (20.6-21.2)	20.2 (19.9-20.5)	<0.001	<0.001	20.0 (19.7-20.3)	22.6 (22.3-22.9)	23.0 (22.7-23.3)	23.2 (22.8-23.5)	22.3 (22.0-22.6)	<0.001	<0.001	
Waist circumference (cm)	67.3 (66.9-67.7)	74.1 (73.6-74.6)	76.5 (75.9-77.1)	77.2 (76.6-77.8)	77.9 (77.3-78.4)	<0.001	<0.001	70.2 (69.5-70.8)	76.3 (75.6-77.1)	78.9 (78.2-79.7)	80.3 (79.5-81.2)	80.0 (79.3-80.7)	<0.001	<0.001	
Systolic blood pressure (mmHg)	118.1 (117.0-119.1)	123.9 (122.5-125.3)	123.2 (121.7-124.7)	124.8 (123.2-126.3)	133.4 (132.1-134.8)	>	<0.001	117.7 (116.6-118.8)	116.5 (115.3-117.8)	117.6 (116.3-118.8)	120.8 (119.4-122.2)	136.9 (135.7-138.1)	<0.001	<0.001	
Diastolic blood pressure (mmHg)	68.9 (68.1-69.6)	71.8 (70.8-72.7)	75.5 (74.5-76.4)	77.9 (76.9-78.9)	79.7 (78.8-80.6)	<0.001	<0.001	71.2 (70.5-72.0)	72.6 (71.7-73.4)	75.4 (74.5-76.2)	77.0 (76.0-77.8)	80.0 (79.2-80.7)	<0.001	<0.001	
<b>Cardiometabolic risk factors, mean (95% CI)</b>															
Total cholesterol (mmol/l)	2.9 (2.9-3.0)	3.1 (3.0-3.2)	3.5 (3.4-3.6)	3.6 (3.5-3.7)	3.7 (3.6-3.7)	>	<0.001	3.3 (3.3-3.4)	3.5 (3.4-3.5)	3.7 (3.6-3.8)	3.8 (3.7-3.9)	4.2 (4.1-4.3)	<0.001	<0.001	
HDL cholesterol (mmol/l)	0.8 (0.8-0.8)	0.0	1.0 (0.9-1.0)	1.1 (1.1-1.1)	1.1 (1.1-1.2)	>	<0.001	0.9 (0.8-0.9)	1.0 (1.0-1.1)	1.1 (1.0-1.1)	1.1 (1.0-1.1)	1.1 (1.1-1.2)	<0.001	<0.001	
LDL cholesterol (mmol/l)	1.7 (1.6-1.7)	1.8 (1.7-1.8)	2.0 (1.9-2.0)	1.9 (1.9-2.0)	2.0 (1.9-2.1)	<0.001	<0.001	1.9 (1.9-2.0)	2.0 (1.9-2.1)	2.1 (2.1-2.2)	2.2 (2.1-2.3)	2.5 (2.4-2.6)	<0.001	<0.001	
Log triglycerides (mmol/l)	-0.03 (-0.06--0.01)	-0.02 (-0.06-0.01)	0.13 (0.09-0.17)	0.14 (0.10-0.18)	0.10 (0.06-0.14)	<0.001	<0.001	0.08 (0.05-0.10)	-0.15 (-0.18--0.11)	-0.04 (-0.07--0.00)	0.12 (0.08-0.16)	0.25 (0.22-0.29)	<0.001	<0.001	
HbA1c (%)	5.1 (5.0-5.2)	5.1 (5.0-5.2)	5.1 (5.0-5.3)	5.2 (5.1-5.3)	5.3 (5.2-5.4)	<0.001	<0.001	5.1 (5.0-5.2)	5.1 (5.0-5.2)	5.2 (5.1-5.3)	5.3 (5.1-5.4)	5.4 (5.3-5.5)	<0.001	<0.001	

Prevalences are adjusted for multi-level mixed-effects, with random-effects to account for clustering at household and village levels, apart from smoking among women as the model could not complete due to values equaling zero.  
 CI, confidence interval; LDL, low-density lipoprotein.  
<sup>a</sup>n=6056 for total population, n=2701 for men and n=3355 for women.  
<sup>\*</sup>P-values were determined by fitting linear regression models for continuous dependent variables (i.e. physical risk factors) and fitting Poisson regression models for categorical dependent variables (i.e. lifestyle risk factors). Regressions were adjusting for SES and the independent variable was age as a continuous variable.  
<sup>\*\*</sup>Adjusted P-values were determined by fitting multi-level mixed-effects Poisson regression models adjusted for SES and with random-effects to adjust for clustering at household and village levels.

**Table 5** Distribution of age-adjusted prevalences of NCD risk factors and healthcare factors by SES quintiles and sex

	Men's socioeconomic status										Women's socioeconomic status									
	Lowest (n=655)	Lower-middle (n=614)	Middle (n=617)	Middle-high (n=579)	Highest (n=606)	Unadjusted P-value	Adjusted P-value**	Lowest (n=719)	Lower-middle (n=759)	Middle (n=757)	Middle-high (n=795)	Highest (n=766)	Unadjusted P-value	Adjusted P-value**						
<b>Lifestyle risk factors, % (95% CI)</b>																				
Current smoker	22.0 (18.4-25.6)	13.7 (10.7-16.7)	11.1 (8.3-13.9)	7.6 (5.1-9.9)	5.7 (3.7-7.7)	<0.001	<0.001	2.2 (1.2-3.2)	2.4 (1.4-3.5)	0.6 (0.0-1.2)	0.4 (-0.1-0.9)	<0.001	<0.001							
Alcohol user	45.6 (38.9-52.3)	38.8 (32.6-45.0)	38.4 (32.1-44.7)	35.1 (29.1-41.2)	35.4 (29.4-41.3)	<0.001	0.016	31.8 (26.6-37.0)	30.7 (25.6-35.8)	31.5 (26.2-36.8)	30.7 (25.5-35.9)	30.9 (25.7-36.1)	0.034	0.918						
Weekly drinker	23.9 (19.2-28.6)	19.1 (14.9-23.3)	18.1 (14.0-22.3)	13.8 (10.2-17.4)	16.8 (12.9-20.8)	<0.001	0.015	6.0 (4.0-8.0)	6.5 (4.3-8.6)	5.5 (3.5-7.5)	4.2 (2.6-5.8)	5.2 (3.3-7.1)	0.058	0.158						
Low physical activity	19.8 (16.4-23.3)	18.6 (15.1-22.1)	20.5 (16.7-24.3)	19.8 (15.9-23.7)	22.8 (18.7-26.9)	0.981	0.198	37.3 (32.9-41.7)	35.9 (31.6-40.1)	37.9 (33.4-42.4)	39.5 (34.9-44.0)	38.5 (34.0-43.1)	0.719	0.385						
Low fruit and vegetable consumption	72.7 (65.5-79.8)	75.2 (67.7-82.7)	73.5 (66.1-81.0)	72.9 (65.4-80.5)	72.9 (69.7-85.2)	0.381	0.298	74.8 (68.3-81.4)	75.9 (69.5-82.3)	79.2 (72.6-85.7)	77.9 (71.5-84.3)	79.3 (72.7-85.8)	0.260	0.248						
High staple consumption <sup>a</sup>	18.9 (11.4-26.4)	15.8 (9.4-22.2)	20.5 (12.5-28.6)	19.9 (12.1-27.8)	19.4 (11.7-27.0)	0.718	0.680	15.7 (9.5-21.9)	15.8 (9.6-22.1)	16.8 (10.2-23.3)	18.4 (11.2-25.5)	18.4 (11.2-25.5)	0.404	0.384						
<b>Physical risk factors, % (95% CI)</b>																				
Overweight	2.1 (1.0-3.2)	3.4 (1.9-4.9)	4.2 (2.5-5.9)	5.4 (3.4-7.5)	10.1 (7.1-13.1)	<0.001	<0.001	12.0 (9.4-14.7)	12.7 (10.0-15.3)	16.5 (13.4-19.7)	23.3 (19.5-27.2)	23.4 (19.6-27.3)	<0.001	<0.001						
Abdominal obesity	0.4 (-0.1-0.8)	0.6 (-0.0-1.1)	0.8 (0.1-1.6)	1.1 (0.2-2.0)	4.6 (2.4-6.8)	<0.001	<0.001	25.3 (21.5-29.0)	26.6 (22.7-30.4)	30.3 (26.1-34.6)	35.2 (30.6-39.8)	37.5 (32.7-42.4)	<0.001	<0.001						
Raised blood pressure	13.7 (11.1-16.4)	15.2 (12.2-18.3)	15.7 (12.5-18.9)	18.8 (15.1-22.6)	18.0 (14.5-21.6)	0.561	0.017	15.9 (13.2-18.6)	14.7 (12.0-17.3)	16.5 (13.4-19.5)	19.9 (15.6-22.3)	18.5 (15.2-21.8)	0.206	0.047						
Raised total cholesterol	1.4 (0.5-2.3)	2.5 (1.3-3.8)	2.1 (0.9-3.4)	4.1 (2.2-6.0)	5.4 (3.3-7.6)	<0.001	<0.001	5.0 (3.3-6.6)	5.9 (4.0-7.8)	5.2 (3.4-7.0)	9.8 (7.0-12.6)	9.8 (7.1-12.6)	0.003	<0.001						
Low HDL cholesterol	65.4 (58.8-72.0)	63.3 (56.8-70.0)	62.3 (55.8-68.7)	61.8 (55.2-68.4)	53.5 (47.5-59.5)	0.040	0.007	86.5 (79.6-93.3)	80.9 (74.5-87.3)	79.6 (73.2-85.9)	81.3 (75.0-87.5)	73.6 (67.6-79.7)	0.047	0.017						
Raised triglycerides	12.1 (9.4-14.8)	12.3 (9.4-15.2)	11.5 (8.7-14.3)	11.5 (8.5-14.4)	12.7 (9.7-15.8)	0.949	0.731	14.4 (11.7-17.1)	14.3 (11.6-16.9)	13.0 (10.4-15.7)	14.7 (12.0-17.5)	14.5 (11.8-17.3)	0.491	0.866						
Raised HbA1c	0.2 (-0.1-0.6)	0.6 (-0.0-1.2)	1.3 (0.3-2.3)	1.0 (0.1-1.9)	0.9 (0.1-1.8)	0.245	0.073	0.2 (-0.1-0.5)	0.5 (0.3-1.0)	0.9 (0.1-1.7)	1.0 (0.1-1.8)	1.6 (0.4-2.8)	0.005	<0.001						
<b>Health screening, % (95% CI)</b>																				
Blood pressure screen	39.5 (34.6-44.5)	39.7 (34.5-44.9)	40.4 (35.1-45.8)	45.0 (39.0-50.9)	47.0 (41.1-53.0)	0.506	0.030	48.7 (43.4-53.9)	53.2 (47.7-58.7)	55.4 (49.6-61.2)	60.1 (54.1-66.0)	59.6 (53.6-65.6)	0.163	0.001						
Diabetes screen	17.6 (13.8-21.4)	18.7 (14.6-22.9)	21.6 (16.9-26.2)	21.9 (17.0-26.7)	26.2 (20.7-31.6)	0.136	0.009	20.9 (16.5-25.4)	23.7 (18.8-28.6)	25.2 (20.0-30.5)	26.9 (21.4-32.4)	28.8 (22.9-34.6)	0.266	0.008						
Cholesterol screen	0.7 (0.1-1.4)	1.5 (0.5-2.4)	1.0 (0.2-1.8)	0.9 (0.1-1.6)	1.7 (0.6-2.7)	0.374	0.335	1.1 (0.3-1.9)	0.7 (0.1-1.3)	1.0 (0.3-1.7)	1.3 (0.4-2.1)	1.1 (0.3-1.9)	0.702	0.621						
<b>Diagnosis, % (95% CI)</b>																				
Diagnosed with raised blood pressure	2.7 (1.5-3.8)	3.6 (2.1-5.0)	4.2 (2.5-5.9)	3.9 (2.1-5.6)	5.7 (3.6-7.7)	0.298	0.010	5.5 (3.9-7.1)	6.4 (4.6-8.2)	7.6 (5.4-9.8)	10.1 (7.5-12.7)	10.5 (7.8-13.2)	0.046	<0.001						
Diagnosed with diabetes	0.9 (0.2-1.6)	1.1 (0.4-2.1)	1.6 (0.5-2.6)	1.1 (0.2-2.1)	1.2 (0.3-2.2)	0.963	0.657	0.6 (-0.0-1.1)	0.7 (0.0-1.3)	1.0 (0.1-1.8)	0.8 (0.0-1.5)	1.0 (0.1-2.0)	0.364	0.174						
Diagnosed with raised cholesterol	0.6 (-0.0-1.2)	0.6 (-0.0-1.2)	1.1 (0.1-1.0)	0.5 (-0.1-0.4)	0.6 (-0.1-0.1)	0.957	0.939	0.7 (0.0-1.4)	0.3 (-0.1-0.8)	0.2 (-0.1-0.6)	0.5 (-0.0-1.0)	0.4 (-0.1-0.8)	0.349	0.444						
<b>Treatment among those diagnosed, % (95% CI)</b>																				
On treatment for raised blood pressure	45.0 (17.1-73.0)	24.9 (5.0-44.9)	43.0 (16.4-69.7)	52.2 (19.8-84.6)	47.8 (22.7-72.8)	0.476	0.434	48.3 (29.7-66.8)	42.6 (25.6-59.7)	52.0 (33.0-70.9)	49.8 (33.3-66.4)	53.6 (36.8-70.4)	0.678	0.518						
On treatment for diabetes	29.7 (-11.5-71.0)	27.2 (-10.9-65.3)	21.1 (-8.2-50.5)	49.8 (-6.6-106.2)	54.0 (0.6-107.3)	0.255	0.319	0.0 (0.0-0.0)	53.4 (6.5-100.2)	16.4 (-6.3-39.2)	41.3 (0.8-81.7)	17.6 (-7.2-42.4)	0.960	0.716						
On treatment for raised cholesterol	25.2 (-24.0-74.1)	23.7 (-22.8-70.2)	0.0 (0.0-0.0)	0.0 (0.0-0.0)	36.2 (-48.3-120.8)	0.765	0.777	0.0 (0.0-0.0)	69.1 (-28.0-166.2)	0.0 (0.0-0.0)	0.0 (0.0-0.0)	94.8 (-17.5-207.0)	0.139	0.153						

Prevalences are adjusted for multi-level mixed-effects, with random-effects to account for clustering at household and village levels, apart from treatment for diabetes among women and treatment for raised cholesterol as the model could not complete due to values equalling zero.  
<sup>a</sup>n=2701 for men and n=3356 for women.  
<sup>\*</sup>P-values were determined by fitting Poisson regression models with categories of SES as the independent variable and adjusted for age as a continuous variable.  
<sup>\*\*</sup>Adjusted P-values were determined by fitting multi-level mixed-effects Poisson regression models adjusted for age and with random-effects to adjust for clustering at household and village levels.



**Figure 1** Selection of patterns of association of NCD risk factors with age and socioeconomic status by sex

**Table 6** Comparison of surveys of risk factors for NCDs in General Population Cohort study with similar case definitions

Study	GPC Uganda	Cameroon <sup>39a</sup>	South Africa <sup>40b</sup>	Nigeria <sup>41c</sup>
Methods				
Survey year	2011	1998	1996	2002–05
Region	SW rural Uganda	Rural dwellers from Bafut	Rural Black community in KwaZulu-Natal province	Egbeda local government area, rural SW Nigeria
Sample frame	General population 25 villages	Random sampling of households	Random-cluster sampling	Random-sample survey
Ages (years)	≥ 13	≥ 15	> 15	18–64
Sample size	6867	1282	947	2000
Results (percentages for men, women)				
Current smoker	14, 1	32, 14	NA	4, 0
Overweight (BMI 25–30 kg/m <sup>2</sup> )	5, 13	1, 6	13, 25	2, 2
Obesity (BMI ≥ 30 kg/m <sup>2</sup> )	1, 4	0.5, 3	9, 23	2, 2
Hypertension	17, 16	16, 12	31, 25	42, 37
Hypercholesterolaemia	3, 7	NA	NA	3, 3
Diabetes	1, 1	5, 3	14, 11	4, 6

FBG, fasting blood glucose; NA, not applicable.

<sup>a</sup>Diabetes defined as FBG ≥ 6.1 mmol/l.

<sup>b</sup>Diabetes defined as FBG ≥ 5.6 mmol/l and hypertension ≥ 130/85 mmHg.

<sup>c</sup>Cholesterol ≥ 200 mg/dl and diabetes FBG ≥ 110 mg/dl.

at play. For example, smokeless tobacco has been shown to be more common among women than men in many African populations, as smoking tobacco was reportedly considered culturally unacceptable for women.<sup>33</sup>

The complex nature of associations between socio-demographic factors and NCD risk factors is further illustrated by the apparent interdependence between the sociodemographic factors in their association with NCD risk factors, as shown through interaction analyses. The difference between men and women in the strength of association between age and lifestyle risk factors may be due to cultural reasons and gender roles across age groups. However, there may also be underlying biological differences between men and women leading to differences in the relationship between age and risk factors, observed here for blood pressure and HDL cholesterol.<sup>34</sup> The relationship between SES and NCD risk factors may be modified by both age and sex in some cases. This may reflect a difference in how the lives of men and women and of those of different age groups are affected by their household's SES.

Our study has a number of strengths and possible limitations which should be considered. The study was cross-sectional in design and we are therefore unable to comment on a temporal relationship between sociodemographic factors and NCD risk factors. The internal validity of this study is likely to be good given the highly rigorous quality control.

The internationally standardized WHO STEPs questionnaire was used, equipment was regularly recalibrated and staff followed detailed standard operating procedures to ensure accuracy and precision of measurements. Data checks were performed on a weekly and monthly basis to ensure consistency in data quality. However, some data were missing, requiring us to perform full-case analysis on 85% of those surveyed. There were some systematic differences between those with and those without data, suggesting that data may not be missing at random (Supplementary Table S2, available as Supplementary data at *IJE* online). This could therefore reduce the generalizability of our findings. NCD lifestyle risk factors and most socioeconomic variables were self-reported by participants, which may have introduced information bias. However, given the low levels of previous screening for NCD risk factors in this population and the rigorous training of staff, this potential for information bias is likely to be low. Physical activity and diet were self-reported. This may have caused misclassification in exposure measurement, which may in part explain the apparently discrepant results between lifestyle factors and overweight. SES was constructed on a household level which may have hidden differences in SES between those within a household, particularly potential differences between men and women.<sup>35</sup> The wide age range of participants (13–97 years) is both a strength and a weakness of this study. Few datasets have examined NCD risk in

early adulthood; our dataset has allowed us to do so. However, only 20.5% of the population are aged 50 years and above and therefore a small proportion of the sample size are older people who have the greatest NCD risk. Even so, we find a substantial burden of NCD risk factors in this relatively young population.

These analyses provide a comprehensive overview of the sociodemographic distribution of NCD risk factors. There are many ways in which future studies could explore this topic in more depth. Objective and better-refined tools for capturing diet and physical activity data, such as food diaries, sodium urine testing and accelerometers, could provide better assessment of exposure. In the current study, data on treatment of NCDs are underpowered. Future work is needed to better examine how sociodemographic factors relate to the treatment of NCDs and access to healthcare facilities. Importantly, there is a need to disentangle the underlying determinants of the observed sociodemographic distributions of NCD risk factors.<sup>8,9</sup> Longitudinal data on sociodemographic factors and NCDs could greatly enhance our understanding of their temporal relationship and the determinants of sociodemographic distribution in NCDs and their risk factors. A multi-disciplinary approach may be needed to achieve a holistic understanding of these determinants.

A clearer picture of the sociodemographic distribution of risk factors may provide insight into potential primary targets for intervention and policy. A better understanding of the underlying 'causes of the causes' of NCDs may also provide information about the aetiology of NCDs and shed light on the observed differences between those of African descent and those of European descent with regard to NCDs and NCD risk

factors.<sup>36–38</sup> With the growing focus on NCDs in SSA, it is important to ensure that policies put in place in order to reduce the burden of NCD risk factors consider rural populations in addition to urban populations. The majority of Africans still reside in rural areas and thus such areas should be incorporated into the design and implementation of policy and healthcare programmes.

## Supplementary Data

Supplementary data are available at *IJE* online.

## Funding

This work was sponsored by Medical Research Council (MRC), UK [grant numbers G0801566 and G0901213-92157] awarded to M.S.S. and also MRC/Uganda Virus Research Institute core funding. G.A.V.M. was supported by the Gates Cambridge Scholarship.

## Acknowledgements

We would like to thank the GPC team and all other MRC staff who contributed to this study. We are also grateful to all study participants for their involvement in the study. M.S. will act as the guarantor for this paper.

**Conflict of interest:** None declared.

### KEY MESSAGES

- Rural African populations are not homogeneous; here we identify a socioeconomic gradient in a relatively poor rural population in Uganda.
- Within this relatively young population NCD risk factors were common and they varied across the socioeconomic gradient, with some risk factors being positively associated and some inversely associated with socioeconomic status.
- A better understanding of the determinants of the sociodemographic distribution of NCDs and their risk factors in rural African populations will help identify populations at most risk of developing NCDs and help plan interventions to reduce their burden.

## References

- 1 World Health Organization. *World Health Statistics 2012*. Geneva: WHO, 2012.
- 2 World Health Organization. 2009. [http://www.who.int/healthinfo/global\\_burden\\_disease/DTHMDG%202004.xls](http://www.who.int/healthinfo/global_burden_disease/DTHMDG%202004.xls).
- 3 World Health Organization. *The Global Burden of Disease: 2004 Update*. Geneva: World Health Organization, 2004.
- 4 Wild S, Roglic G, Green A, Sicree R, King H. Global prevalence of diabetes: estimates for the year 2000 and projections for 2030. *Diabetes Care* 2004;**27**:1047–53.
- 5 Popkin BM. The nutrition transition and its health implications in lower-income countries. *Public Health Nutr* 1998;**1**:5–21.
- 6 Sobngwi E, Mbanya JC, Unwin NC *et al*. Exposure over the life course to an urban environment and its relation with obesity, diabetes, and hypertension in rural and urban Cameroon. *Int J Epidemiol* 2004;**33**:769–76.
- 7 Omran AR. The epidemiologic transition. A theory of the epidemiology of population change. *Milbank Memorial Fund Quarterly* 1971;**49**:509–38.

- <sup>8</sup> Marmot M. Social determinants of health inequalities. *Lancet* 2005;**365**:1099–1104.
- <sup>9</sup> Marmot M, Friel S, Bell R, Houweling TA, Taylor S. Closing the gap in a generation: health equity through action on the social determinants of health. *Lancet* 2008; **372**:1661–69.
- <sup>10</sup> Di Cesare M, Khang YH, Asaria P *et al*. Inequalities in non-communicable diseases and effective responses. *Lancet* 2013;**381**:585–97.
- <sup>11</sup> United Nations Human Settlements Programme (UN-HABITAT). *The State of African Cities 2012: Governance, Inequality and Urban Land Markets*. Nairobi: UN-HABITAT, 2010.
- <sup>12</sup> Asiki G, Murphy G, Nakiyingi-Miiró J *et al*. The general population cohort in rural south-western Uganda: a platform for communicable and non-communicable disease studies. *Int J Epidemiol* 2013;**42**:129–41.
- <sup>13</sup> Nakibinge S, Maher D, Katende J, Kamali A, Grosskurth H, Seeley J. Community engagement in health research: two decades of experience from a research project on HIV in rural Uganda. *Trop Med Int Health* 2009;**14**:190–95.
- <sup>14</sup> World Health Organization. *STEPS Surveillance Manual*. <http://www.who.int/chp/steps/manual/en/index.html> (14 May 2013, date last accessed).
- <sup>15</sup> Howe LD, Galobardes B, Matijasevich A *et al*. Measuring socio-economic position for epidemiological studies in low- and middle-income countries. *Int J Epidemiol* 2012; **41**:871–86.
- <sup>16</sup> World Health Organization. *Global Strategy on Diet, Physical Activity and Health*. Geneva: WHO, 2008.
- <sup>17</sup> Third Report of the National Cholesterol Education Program (NCEP) Expert Panel on Detection, Evaluation, and Treatment of High Blood Cholesterol in Adults (Adult Treatment Panel III). Final report. *Circulation* 2002;**106**:3143–421.
- <sup>18</sup> American Diabetes Association. *What Your Cholesterol Levels Mean*. [http://www.heart.org/HEARTORG/Conditions/Cholesterol/AboutCholesterol/What-Your-Cholesterol-Levels-Mean\\_UCM\\_305562\\_Article.jsp](http://www.heart.org/HEARTORG/Conditions/Cholesterol/AboutCholesterol/What-Your-Cholesterol-Levels-Mean_UCM_305562_Article.jsp) (14 May 2013, date last accessed).
- <sup>19</sup> World Health Organization. *Use of Glycated Haemoglobin (HbA1c) in the Diagnosis of Type 2 Diabetes*. Geneva: World Health Organization, 2011.
- <sup>20</sup> Stuckler D, Basu S, McKee M. Commentary: UN high level meeting on non-communicable diseases: an opportunity for whom? *BMJ* 2011;**343**:d5336.
- <sup>21</sup> BeLue R, Okoror TA, Iwelunmor J *et al*. An overview of cardiovascular risk factor burden in sub-Saharan African countries: a socio-cultural perspective. *Global Health* 2009; **5**:10.
- <sup>22</sup> World Health Organization. *Global Status Report on Noncommunicable Diseases 2010*. Geneva: World Health Organization, 2011.
- <sup>23</sup> Uganda Bureau of Statistics. *Uganda Demographic and Health Survey, Preliminary Report, 2011*. Kampala: Uganda Bureau of Statistics, 2011.
- <sup>24</sup> Ziraba AK, Fotso JC, Ochako R. Overweight and obesity in urban Africa: A problem of the rich or the poor? *BMC Public Health* 2009;**9**:465.
- <sup>25</sup> McLaren L. Socioeconomic status and obesity. *Epidemiol Rev* 2007;**29**:29–48.
- <sup>26</sup> Subramanian SV, Perkins JM, Ozaltin E, Davey Smith G. Weight of nations: a socioeconomic analysis of women in low- to middle-income countries. *Am J Clin Nutr* 2011;**93**: 413–21.
- <sup>27</sup> Swinburn BA, Sacks G, Hall KD *et al*. The global obesity pandemic: shaped by global drivers and local environments. *Lancet* 2011;**378**:804–14.
- <sup>28</sup> Bovet P, Ross AG, Gervasoni JP *et al*. Distribution of blood pressure, body mass index and smoking habits in the urban population of Dar es Salaam, Tanzania, and associations with socioeconomic status. *Int J Epidemiol* 2002; **31**:240–47.
- <sup>29</sup> Pampel F. Tobacco use in sub-Saharan Africa: estimates from the demographic health surveys. *Soc Sci Med* 2008; **66**:1772–83.
- <sup>30</sup> Hiscock R, Bauld L, Amos A, Fidler JA, Munafo M. Socioeconomic status and smoking: a review. *Ann N Y Acad Sci* 2012;**1248**:107–23.
- <sup>31</sup> Laaksonen M, Rahkonen O, Karvonen S, Lahelma E. Socioeconomic status and smoking: analysing inequalities with multiple indicators. *Eur J Public Health* 2005;**15**: 262–69.
- <sup>32</sup> Doku D, Koivusilta L, Raisamo S, Rimpela A. Do socio-economic differences in tobacco use exist also in developing countries? A study of Ghanaian adolescents. *BMC Public Health* 2010;**10**:758.
- <sup>33</sup> Townsend L, Flisher AJ, Gilreath T, King G. A systematic literature review of tobacco use among adults 15 years and older in sub-Saharan Africa. *Drug Alcohol Depend* 2006;**84**:14–27.
- <sup>34</sup> Cameron N, Getz B. Sex differences in the prevalence of obesity in rural African adolescents. *Int J Obes Relat Metab Disord* 1997;**21**:775–82.
- <sup>35</sup> Deere CD, Doss CR. *Gender and the Distribution of Wealth in Developing Countries*. Helsinki: World Institute for Development Economics Research, 2006.
- <sup>36</sup> Cappuccio FP, Cook DG, Atkinson RW, Strazzullo P. Prevalence, detection, and management of cardiovascular risk factors in different ethnic groups in south London. *Heart* 1997;**78**:555–63.
- <sup>37</sup> Khattar RS, Swales JD, Senior R, Lahiri A. Racial variation in cardiovascular morbidity and mortality in essential hypertension. *Heart* 2000;**83**:267–71.
- <sup>38</sup> Godsland IF, Johnston DG, Chaturvedi N. Mechanisms of disease: lessons from ethnicity in the role of triglyceride metabolism in ischemic heart disease. *Nat Clin Pract Endocrinol Metab* 2007;**3**:530–38.
- <sup>39</sup> Sobngwi E, Mbanya JC, Unwin NC *et al*. Physical activity and its relationship with obesity, hypertension and diabetes in urban and rural Cameroon. *Int J Obes Relat Metab Disord* 2002;**26**:1009–16.
- <sup>40</sup> Motala AA, Esterhuizen T, Pirie FJ, Omar MA. The prevalence of metabolic syndrome and determination of the optimal waist circumference cutoff points in a rural South African community. *Diabetes Care* 2011;**34**:1032–37.
- <sup>41</sup> Oladapo OO, Salako L, Sodiq O, Shoyinka K, Adedapo K, Falase AO. A prevalence of cardiometabolic risk factors among a rural Yoruba south-western Nigerian population: a population-based survey. *Cardiovasc J Afr* 2010;**21**: 26–31.