

LONDON
SCHOOL of
HYGIENE
& TROPICAL
MEDICINE



LSHTM Research Online

Giustino, G; Mehran, R; Dangas, GD; Kirtane, AJ; Redfors, B; Généreux, P; Brener, SJ; Prats, J; Pocock, SJ; Deliargyris, EN; +1 more... Stone, GW; (2017) Characterization of the Average Daily Ischemic and Bleeding Risk After Primary PCI for STEMI. *Journal of the American College of Cardiology*, 70 (15). pp. 1846-1857. ISSN 0735-1097 DOI: <https://doi.org/10.1016/j.jacc.2017.08.018>

Downloaded from: <http://researchonline.lshtm.ac.uk/4503963/>

DOI: <https://doi.org/10.1016/j.jacc.2017.08.018>

Usage Guidelines:

Please refer to usage guidelines at <https://researchonline.lshtm.ac.uk/policies.html> or alternatively contact researchonline@lshtm.ac.uk.

Available under license: <http://creativecommons.org/licenses/by-nc-nd/2.5/>

<https://researchonline.lshtm.ac.uk>

SUPPLEMENTAL APPENDIX

Supplemental Table 1. Average daily ischemic and bleeding rates through 1 year after primary PCI for STEMI. Red text denotes the peak for ischemic and bleeding rates.

Supplemental Table 2. Average daily rate for adverse events in the acute (day 0 to day 3), subacute (day 3 to day 30) and late (day 30 to day 365) phases after primary percutaneous coronary intervention for STEMI.

Supplemental Table 3. Average daily rate for adverse events in the in-hospital and post-discharge periods after primary percutaneous coronary intervention for STEMI.

Supplemental Table 4. Differences in average daily rate across the acute (day 0 to day 3), subacute (day 3 to day 30) and late (day 30 to day 365) phases after primary PCI for STEMI at 1 year.

Supplemental Table 5. Average daily rate for adverse events in the acute (day 0 to day 1), subacute (day 1 to day 30) and late (day 30 to day 365) phases after primary PCI for STEMI according to the randomized PCI antithrombotic treatment.

Supplemental Table 6. Average daily rate for adverse events in the acute (day 0 to day 3), subacute (day 3 to day 30) and late (day 30 to day 365) phases after primary PCI for STEMI according to the randomized PCI antithrombotic treatment

Supplemental Figure 1. Number of daily ischemic and bleeding events after primary PCI for STEMI. Panel A: overall (day 0 to day 365) and late (day 30 to 365) periods; Panel B: early (day 0 to day 30) period.

Supplemental Figure 2. Daily rates for ischemic and bleeding events after primary PCI for STEMI. Panel A: overall (day 0 to day 365) and late (day 30 to 365) periods; Panel B: early (day 0 to day 30) period. The instantaneous daily rate is calculated as the number of events on that day divided by number of patients at risk on the same day.

Supplemental Figure 3. Temporal differences in the average ischemic and bleeding rates using the alternative definition for the acute phase (day 0 to day 3). ADBR: Average Daily Bleeding Rate; ADIR: Average Daily Ischemic Rate; CI: confidence interval; LSMD: least square mean differences.

Supplemental Figure 4. Temporal differences in the average ischemic and bleeding rates excluding cardiac death from the composite ischemic endpoint. ADBR: Average Daily Bleeding Rate; ADIR: Average Daily Ischemic Rate; CI: confidence interval; LSMD: least square mean differences.

Supplemental Figure 5. Differences in average daily ischemic and bleeding rates in the acute, subacute, early and late phases in patients treated with bivalirudin. In panel A the acute phase is defined as ≤ 24 hours after primary PCI. In panel B the acute phase is defined as ≤ 3 days after primary PCI. ADBR: Average Daily Bleeding Rate; ADIR: Average Daily Ischemic Rate; CI: Confidence Interval; LSMD: least square mean differences.

Supplemental Figure 6. Differences in average daily ischemic and bleeding rates in the acute, subacute, early and late phases in patients treated with UFH + GPI. In panel A the acute phase is defined as ≤ 24 hours after primary PCI. In panel B the acute phase is defined as ≤ 3 days after primary PCI. GPI: Glycoprotein IIb/IIIa inhibitor.

Supplemental Table 1. Average daily ischemic and bleeding rates through 1 year after primary PCI for STEMI. The peak ischemic and bleeding rates are highlighted in red text.

Note that average daily rates are reported as $\times 10^{-3}$.

Average daily ischemic rate ($\times 10^{-3}$)				Average daily bleeding rate ($\times 10^{-3}$)			
Day	N. of events	Patient-day of follow-up	Average daily rate	Day	N. of events	Patient-day of follow-up	Average daily rate
0	37	3602	10.27207	0	33	3602	9.161577
1	53	7181	7.380588	1	83	7181	11.55828
2	64	10752	5.952381	2	138	10752	12.83482
3	77	14312	5.380101	3	159	14312	11.10956
4	85	17859	4.759505	4	182	17859	10.19094
5	92	21398	4.299467	5	197	21398	9.206468
6	95	24932	3.810364	6	207	24932	8.302583
7	105	28465	3.688741	7	215	28465	7.553135
8	111	31995	3.469292	8	220	31995	6.876074
9	114	35523	3.209188	9	222	35523	6.249472
10	118	39049	3.021844	10	224	39049	5.736382
11	125	42573	2.936133	11	228	42573	5.355507
12	127	46093	2.755299	12	230	46093	4.989912
13	131	49610	2.640597	13	230	49610	4.636162
14	134	53123	2.522448	14	231	53123	4.348399
15	139	56633	2.454399	15	231	56633	4.078894
16	140	60142	2.327824	16	234	60142	3.890792
17	142	63651	2.230915	17	235	63651	3.692008
18	144	67157	2.144229	18	236	67157	3.514153
19	146	70659	2.066262	19	236	70659	3.339985
20	148	74160	1.995685	20	236	74160	3.182309
21	149	77658	1.918669	21	237	77658	3.051843
22	151	81154	1.86066	22	237	81154	2.920374
23	153	84649	1.807464	23	239	84649	2.823424
24	156	88143	1.769851	24	239	88143	2.711503
25	159	91633	1.735183	25	241	91633	2.630057
26	161	95119	1.692617	26	243	95119	2.554695
27	162	98602	1.642969	27	244	98602	2.474595
28	162	102083	1.586944	28	245	102083	2.400008
29	165	105561	1.563077	29	246	105561	2.330406
30	166	109037	1.522419	30	246	109037	2.256115
31	167	112460	1.484972	31	248	112460	2.205229
32	167	115880	1.441146	32	248	115880	2.140145
33	168	119297	1.40825	33	248	119297	2.078845
34	168	122712	1.369059	34	248	122712	2.020992
35	169	126126	1.33993	35	248	126126	1.966288

36	170	129540	1.312336
37	171	132951	1.286188
38	173	136360	1.2687
39	173	139766	1.237783
40	175	143170	1.222323
41	175	146571	1.193961
42	175	149971	1.166892
43	175	153371	1.141024
44	175	156771	1.116278
45	175	160171	1.092582
46	179	163571	1.094326
47	180	166968	1.078051
48	180	170364	1.056561
49	180	173759	1.035918
50	181	177153	1.021716
51	181	180547	1.002509
52	182	183940	0.989453
53	182	187332	0.971537
54	183	190724	0.959502
55	184	194114	0.947897
56	184	197503	0.931631
57	184	200891	0.91592
58	184	204278	0.900733
59	184	207665	0.886042
60	184	211052	0.871823
61	185	214439	0.862716
62	185	217826	0.849302
63	186	221213	0.840819
64	186	224600	0.828139
65	186	227987	0.815836
66	186	231374	0.803893
67	186	234761	0.792295
68	187	238147	0.785229
69	187	241532	0.774225
70	187	244917	0.763524
71	187	248302	0.753115
72	187	251687	0.742986
73	187	255072	0.733126
74	187	258456	0.723527
75	187	261840	0.714177
76	187	265224	0.705064
77	188	268608	0.699905
78	189	271992	0.694873
79	189	275376	0.686334
80	189	278760	0.678003
81	191	282144	0.676959

36	248	129540	1.914467
37	248	132951	1.865349
38	248	136360	1.818715
39	248	139766	1.774394
40	248	143170	1.732206
41	248	146571	1.692013
42	248	149971	1.653653
43	249	153371	1.623514
44	249	156771	1.588304
45	250	160171	1.560832
46	250	163571	1.528388
47	250	166968	1.497293
48	250	170364	1.467446
49	251	173759	1.444529
50	252	177153	1.422499
51	252	180547	1.395758
52	252	183940	1.370012
53	252	187332	1.345205
54	252	190724	1.321281
55	252	194114	1.298206
56	252	197503	1.27593
57	252	200891	1.254412
58	252	204278	1.233613
59	253	207665	1.218308
60	253	211052	1.198757
61	253	214439	1.179823
62	253	217826	1.161478
63	253	221213	1.143694
64	253	224600	1.126447
65	253	227987	1.109712
66	253	231374	1.093468
67	253	234761	1.077692
68	253	238147	1.062369
69	253	241532	1.04748
70	253	244917	1.033003
71	253	248302	1.018921
72	253	251687	1.005217
73	253	255072	0.991877
74	253	258456	0.97889
75	253	261840	0.966239
76	253	265224	0.953911
77	253	268608	0.941893
78	253	271992	0.930174
79	253	275376	0.918744
80	253	278760	0.907591
81	253	282144	0.896705

82	192	285528	0.672438	82	253	285528	0.886078
83	192	288912	0.664562	83	253	288912	0.875699
84	192	292296	0.656868	84	253	292296	0.865561
85	192	295680	0.649351	85	253	295680	0.855655
86	192	299064	0.642003	86	253	299064	0.845973
87	193	302448	0.638126	87	253	302448	0.836507
88	193	305831	0.631067	88	253	305831	0.827254
89	193	309213	0.624165	89	253	309213	0.818206
90	194	312595	0.620611	90	253	312595	0.809354
91	194	315977	0.613969	91	253	315977	0.800691
92	194	319359	0.607467	92	253	319359	0.792212
93	195	322741	0.6042	93	253	322741	0.78391
94	195	326122	0.597936	94	253	326122	0.775783
95	195	329503	0.5918	95	253	329503	0.767823
96	196	332884	0.588794	96	253	332884	0.760025
97	196	336265	0.582874	97	254	336265	0.755357
98	196	339646	0.577071	98	254	339646	0.747837
99	196	343027	0.571384	99	254	343027	0.740466
100	198	346408	0.57158	100	254	346408	0.733239
101	198	349788	0.566057	101	255	349788	0.729013
102	198	353168	0.56064	102	255	353168	0.722036
103	198	356548	0.555325	103	255	356548	0.715191
104	199	359928	0.552888	104	255	359928	0.708475
105	199	363308	0.547745	105	255	363308	0.701884
106	199	366688	0.542696	106	255	366688	0.695414
107	199	370068	0.537739	107	255	370068	0.689063
108	199	373448	0.532872	108	255	373448	0.682826
109	200	376828	0.530746	109	255	376828	0.676701
110	200	380208	0.526028	110	255	380208	0.670686
111	201	383587	0.524001	111	255	383587	0.664777
112	202	386965	0.522011	112	255	386965	0.658974
113	202	390342	0.517495	113	255	390342	0.653273
114	204	393717	0.518139	114	255	393717	0.647673
115	204	397092	0.513735	115	255	397092	0.642169
116	204	400466	0.509407	116	255	400466	0.636758
117	205	403838	0.507629	117	256	403838	0.633918
118	205	407208	0.503428	118	256	407208	0.628671
119	205	410577	0.499297	119	256	410577	0.623513
120	207	413946	0.500065	120	256	413946	0.618438
121	207	417314	0.496029	121	256	417314	0.613447
122	208	420682	0.494435	122	256	420682	0.608536
123	209	424050	0.492866	123	256	424050	0.603702
124	210	427417	0.491323	124	256	427417	0.598947
125	210	430784	0.487483	125	256	430784	0.594265
126	211	434151	0.486006	126	256	434151	0.589657
127	211	437517	0.482267	127	256	437517	0.58512

128	214	440883	0.48539
129	214	444249	0.481712
130	216	447615	0.482558
131	216	450980	0.478957
132	216	454345	0.47541
133	217	457710	0.474099
134	217	461075	0.470639
135	217	464440	0.467229
136	217	467804	0.463869
137	217	471168	0.460558
138	218	474532	0.4594
139	218	477896	0.456166
140	218	481260	0.452978
141	218	484624	0.449833
142	218	487988	0.446732
143	220	491352	0.447744
144	222	494716	0.448742
145	222	498079	0.445712
146	222	501442	0.442723
147	222	504805	0.439774
148	222	508168	0.436863
149	222	511531	0.433991
150	222	514894	0.431157
151	222	518257	0.428359
152	222	521619	0.425598
153	223	524981	0.424777
154	223	528342	0.422075
155	223	531703	0.419407
156	223	535064	0.416773
157	223	538425	0.414171
158	223	541786	0.411602
159	223	545146	0.409065
160	224	548506	0.408382
161	224	551866	0.405896
162	224	555226	0.403439
163	224	558586	0.401013
164	226	561946	0.402174
165	226	565306	0.399783
166	226	568666	0.397421
167	228	572025	0.398584
168	228	575384	0.396257
169	228	578741	0.393959
170	228	582098	0.391687
171	228	585455	0.389441
172	229	588812	0.388919
173	229	592169	0.386714

128	256	440883	0.580653
129	256	444249	0.576253
130	256	447615	0.57192
131	256	450980	0.567653
132	256	454345	0.563448
133	256	457710	0.559306
134	256	461075	0.555224
135	256	464440	0.551201
136	256	467804	0.547238
137	256	471168	0.543331
138	256	474532	0.539479
139	256	477896	0.535681
140	256	481260	0.531937
141	256	484624	0.528245
142	256	487988	0.524603
143	256	491352	0.521011
144	256	494716	0.517469
145	257	498079	0.515982
146	257	501442	0.512522
147	257	504805	0.509107
148	257	508168	0.505738
149	257	511531	0.502413
150	257	514894	0.499132
151	257	518257	0.495893
152	257	521619	0.492697
153	257	524981	0.489542
154	257	528342	0.486427
155	257	531703	0.483353
156	257	535064	0.480316
157	257	538425	0.477318
158	257	541786	0.474357
159	257	545146	0.471433
160	257	548506	0.468545
161	257	551866	0.465693
162	257	555226	0.462875
163	257	558586	0.46009
164	257	561946	0.457339
165	257	565306	0.454621
166	257	568666	0.451935
167	257	572025	0.449281
168	257	575384	0.446658
169	258	578741	0.445795
170	258	582098	0.443224
171	258	585455	0.440683
172	258	588812	0.43817
173	258	592169	0.435686

174	229	595525	0.384535
175	229	598881	0.38238
176	229	602235	0.38025
177	229	605588	0.378145
178	230	608940	0.377706
179	231	612291	0.377272
180	231	615642	0.375218
181	232	618993	0.374802
182	233	622343	0.374392
183	233	625690	0.372389
184	236	629037	0.375177
185	236	632382	0.373192
186	236	635726	0.371229
187	236	639069	0.369287
188	236	642409	0.367367
189	236	645748	0.365468
190	236	649086	0.363588
191	236	652423	0.361729
192	236	655758	0.359889
193	236	659091	0.358069
194	236	662424	0.356267
195	236	665755	0.354485
196	236	669086	0.35272
197	236	672417	0.350973
198	236	675748	0.349243
199	236	679078	0.34753
200	237	682408	0.3473
201	239	685738	0.34853
202	240	689066	0.348298
203	241	692394	0.348068
204	241	695722	0.346403
205	241	699050	0.344754
206	241	702377	0.343121
207	241	705704	0.341503
208	241	709031	0.339901
209	241	712358	0.338313
210	241	715685	0.33674
211	241	719012	0.335182
212	242	722339	0.335023
213	242	725666	0.333487
214	242	728993	0.331965
215	242	732320	0.330457
216	242	735647	0.328962
217	242	738974	0.327481
218	242	742301	0.326013
219	242	745628	0.324559

174	258	595525	0.433231
175	259	598881	0.432473
176	259	602235	0.430065
177	259	605588	0.427684
178	259	608940	0.425329
179	261	612291	0.426268
180	261	615642	0.423948
181	261	618993	0.421653
182	261	622343	0.419383
183	261	625690	0.417139
184	261	629037	0.41492
185	261	632382	0.412725
186	261	635726	0.410554
187	261	639069	0.408407
188	262	642409	0.40784
189	262	645748	0.405731
190	262	649086	0.403645
191	262	652423	0.40158
192	262	655758	0.399538
193	262	659091	0.397517
194	262	662424	0.395517
195	262	665755	0.393538
196	262	669086	0.391579
197	262	672417	0.389639
198	262	675748	0.387718
199	262	679078	0.385817
200	262	682408	0.383935
201	262	685738	0.38207
202	262	689066	0.380225
203	262	692394	0.378397
204	262	695722	0.376587
205	262	699050	0.374794
206	262	702377	0.373019
207	262	705704	0.37126
208	262	709031	0.369518
209	262	712358	0.367793
210	262	715685	0.366083
211	262	719012	0.364389
212	262	722339	0.362711
213	262	725666	0.361048
214	263	728993	0.360772
215	263	732320	0.359133
216	263	735647	0.357508
217	263	738974	0.355899
218	263	742301	0.354304
219	263	745628	0.352723

220	242	748955	0.323117
221	242	752282	0.321688
222	242	755609	0.320271
223	242	758935	0.318868
224	242	762261	0.317477
225	243	765586	0.317404
226	243	768911	0.316031
227	243	772236	0.314671
228	244	775561	0.314611
229	244	778886	0.313268
230	244	782210	0.311937
231	244	785534	0.310617
232	244	788858	0.309308
233	245	792182	0.309272
234	245	795505	0.30798
235	245	798827	0.3067
236	245	802149	0.30543
237	245	805471	0.30417
238	245	808792	0.302921
239	246	812112	0.302914
240	246	815432	0.301681
241	246	818752	0.300457
242	246	822071	0.299244
243	246	825390	0.298041
244	248	828709	0.299261
245	248	832028	0.298067
246	249	835347	0.29808
247	249	838666	0.2969
248	249	841985	0.29573
249	249	845304	0.294569
250	249	848623	0.293417
251	250	851942	0.293447
252	250	855261	0.292308
253	251	858580	0.292343
254	251	861899	0.291217
255	251	865218	0.2901
256	251	868536	0.288992
257	251	871854	0.287892
258	251	875171	0.286801
259	252	878488	0.286857
260	252	881805	0.285777
261	252	885122	0.284707
262	252	888439	0.283644
263	252	891756	0.282589
264	252	895073	0.281541
265	252	898390	0.280502

220	263	748955	0.351156
221	263	752282	0.349603
222	263	755609	0.348064
223	263	758935	0.346538
224	263	762261	0.345026
225	263	765586	0.343528
226	263	768911	0.342042
227	263	772236	0.340569
228	263	775561	0.339109
229	263	778886	0.337662
230	263	782210	0.336227
231	263	785534	0.334804
232	263	788858	0.333393
233	263	792182	0.331994
234	263	795505	0.330608
235	263	798827	0.329233
236	263	802149	0.327869
237	263	805471	0.326517
238	263	808792	0.325176
239	263	812112	0.323847
240	263	815432	0.322528
241	263	818752	0.321221
242	263	822071	0.319924
243	263	825390	0.318637
244	263	828709	0.317361
245	263	832028	0.316095
246	264	835347	0.316036
247	264	838666	0.314786
248	264	841985	0.313545
249	264	845304	0.312314
250	265	848623	0.312271
251	265	851942	0.311054
252	265	855261	0.309847
253	265	858580	0.308649
254	265	861899	0.307461
255	265	865218	0.306281
256	265	868536	0.305111
257	265	871854	0.30395
258	265	875171	0.302798
259	265	878488	0.301655
260	266	881805	0.301654
261	266	885122	0.300524
262	266	888439	0.299402
263	266	891756	0.298288
264	266	895073	0.297182
265	266	898390	0.296085

266	252	901707	0.27947
267	252	905023	0.278446
268	253	908339	0.27853
269	253	911655	0.277517
270	254	914971	0.277604
271	254	918287	0.276602
272	254	921603	0.275607
273	254	924919	0.274619
274	254	928234	0.273638
275	254	931549	0.272664
276	254	934864	0.271697
277	254	938179	0.270737
278	254	941494	0.269784
279	254	944806	0.268838
280	254	948118	0.267899
281	254	951430	0.266967
282	255	954742	0.267088
283	256	958054	0.267208
284	256	961364	0.266288
285	256	964673	0.265375
286	258	967982	0.266534
287	258	971291	0.265626
288	258	974600	0.264724
289	258	977909	0.263828
290	258	981218	0.262939
291	258	984527	0.262055
292	258	987836	0.261177
293	258	991145	0.260305
294	258	994454	0.259439
295	258	997763	0.258578
296	258	1001072	0.257724
297	258	1004381	0.256875
298	258	1007690	0.256031
299	258	1010999	0.255193
300	258	1014307	0.254361
301	259	1017615	0.254517
302	259	1020923	0.253692
303	259	1024231	0.252873
304	260	1027538	0.253032
305	260	1030845	0.25222
306	260	1034152	0.251414
307	261	1037456	0.251577
308	262	1040759	0.251739
309	263	1044061	0.251901
310	263	1047362	0.251107
311	263	1050661	0.250319

266	266	901707	0.294996
267	266	905023	0.293915
268	266	908339	0.292842
269	266	911655	0.291777
270	266	914971	0.29072
271	266	918287	0.28967
272	266	921603	0.288628
273	266	924919	0.287593
274	266	928234	0.286566
275	266	931549	0.285546
276	266	934864	0.284533
277	266	938179	0.283528
278	266	941494	0.28253
279	266	944806	0.281539
280	266	948118	0.280556
281	266	951430	0.279579
282	266	954742	0.278609
283	266	958054	0.277646
284	266	961364	0.27669
285	266	964673	0.275741
286	266	967982	0.274798
287	266	971291	0.273862
288	266	974600	0.272932
289	266	977909	0.272009
290	266	981218	0.271092
291	266	984527	0.270181
292	266	987836	0.269275
293	266	991145	0.268376
294	266	994454	0.267483
295	266	997763	0.266596
296	266	1001072	0.265715
297	266	1004381	0.26484
298	266	1007690	0.26397
299	266	1010999	0.263106
300	267	1014307	0.263234
301	267	1017615	0.262378
302	267	1020923	0.261528
303	267	1024231	0.260683
304	267	1027538	0.259844
305	267	1030845	0.259011
306	267	1034152	0.258183
307	267	1037456	0.25736
308	267	1040759	0.256544
309	267	1044061	0.255732
310	267	1047362	0.254926
311	267	1050661	0.254126

312	263	1053959	0.249535
313	263	1057255	0.248757
314	263	1060549	0.247985
315	263	1063843	0.247217
316	263	1067137	0.246454
317	263	1070430	0.245696
318	264	1073723	0.245873
319	264	1077015	0.245122
320	264	1080306	0.244375
321	265	1083596	0.244556
322	266	1086886	0.244736
323	267	1090176	0.244915
324	267	1093466	0.244178
325	268	1096756	0.244357
326	268	1100043	0.243627
327	269	1103328	0.243808
328	269	1106613	0.243084
329	269	1109898	0.242365
330	270	1113183	0.242548
331	270	1116467	0.241834
332	270	1119751	0.241125
333	271	1123032	0.241311
334	271	1126310	0.240609
335	271	1129588	0.23991
336	272	1132863	0.2401
337	272	1136137	0.239408
338	272	1139410	0.23872
339	272	1142682	0.238036
340	272	1145953	0.237357
341	272	1149220	0.236682
342	272	1152485	0.236012
343	272	1155748	0.235345
344	272	1159008	0.234683
345	272	1162267	0.234025
346	272	1165524	0.233371
347	274	1168780	0.234432
348	274	1172032	0.233782
349	274	1175283	0.233135
350	274	1178530	0.232493
351	274	1181772	0.231855
352	274	1185009	0.231222
353	274	1188236	0.230594
354	274	1191455	0.229971
355	274	1194663	0.229353
356	274	1197856	0.228742
357	276	1201036	0.229802

312	267	1053959	0.253331
313	267	1057255	0.252541
314	267	1060549	0.251756
315	267	1063843	0.250977
316	267	1067137	0.250202
317	267	1070430	0.249432
318	267	1073723	0.248667
319	267	1077015	0.247907
320	267	1080306	0.247152
321	267	1083596	0.246402
322	267	1086886	0.245656
323	267	1090176	0.244915
324	267	1093466	0.244178
325	267	1096756	0.243445
326	267	1100043	0.242718
327	267	1103328	0.241995
328	267	1106613	0.241277
329	267	1109898	0.240563
330	268	1113183	0.240751
331	268	1116467	0.240043
332	268	1119751	0.239339
333	268	1123032	0.23864
334	268	1126310	0.237945
335	268	1129588	0.237255
336	268	1132863	0.236569
337	268	1136137	0.235887
338	268	1139410	0.235209
339	269	1142682	0.235411
340	269	1145953	0.234739
341	269	1149220	0.234072
342	269	1152485	0.233409
343	269	1155748	0.23275
344	269	1159008	0.232095
345	269	1162267	0.231444
346	269	1165524	0.230797
347	269	1168780	0.230155
348	269	1172032	0.229516
349	269	1175283	0.228881
350	269	1178530	0.22825
351	269	1181772	0.227624
352	269	1185009	0.227002
353	269	1188236	0.226386
354	269	1191455	0.225774
355	269	1194663	0.225168
356	269	1197856	0.224568
357	269	1201036	0.223973

358	276	1204208	0.229196	358	269	1204208	0.223383
359	277	1207366	0.229425	359	269	1207366	0.222799
360	277	1210514	0.228828	360	270	1210514	0.223046
361	277	1213645	0.228238	361	270	1213645	0.22247
362	277	1216758	0.227654	362	270	1216758	0.221901
363	277	1219839	0.227079	363	270	1219839	0.221341
364	279	1222897	0.228147	364	270	1222897	0.220787
365	279	1225903	0.227587	365	271	1225903	0.221062

Supplemental Table 2. Average daily rate for adverse events in the acute (day 0 to day 3), subacute (day 4 to day 30) and late (day 31 to day 365) phases after primary percutaneous coronary intervention for STEMI.

Endpoint	Acute phase (day 0 to day 3)	Subacute phase (day 3 to day 30)	Early phase (day 0 to day 30)	Late phase (day 30 to day 365)
Average daily ischemic rate*	77/14312 (0.5380%)	89/94725 (0.0940%)	166/109037 (0.1522%)	113/1116866 (0.0101%)
Cardiac death	40/14312 (0.2795%)	44/94725 (0.0465%)	84/109037 (0.0770%)	21/1116866 (0.0019%)
Reinfarction	31/14312 (0.2166%)	41/94725 (0.0433%)	72/109037 (0.0660%)	85/1116866 (0.0076%)
Definite stent thrombosis	33/14312 (0.2306%)	35/94725 (0.0369%)	68/109037 (0.0624%)	32/1116866 (0.0029%)
Average daily bleeding rate‡	159/14312 (1.1110%)	87/94725 (0.0918%)	246/109037 (0.2256%)	25/1116866 (0.0022%)
Average daily net adverse clinical events rate	236/14312 (1.6490%)	176/94725 (0.1858%)	93 /109037 (0.0853%)	138/1116866 (0.0124%)
Average daily mortality rate	43/14312 (0.3004%)	50/94725 (0.0528%)	9/109037 (0.0083%)	54/1116866 (0.0048%)
Non-cardiac death	3/14312 (0.0210%)	6/94725 (0.0063%)	412/109037 (0.3779%)	33/1116866 (0.0030%)

Data reported as number of events/patient-day of follow-up in each time-period. *Defined as any cardiac death, reinfarction and definite stent thrombosis. †Defined as any reinfarction and definite stent thrombosis. ‡Defined as non-CABG-related TIMI major and minor bleeding. || Defined as any death, reinfarction, definite stent thrombosis, and non-CABG-related TIMI major and minor bleeding.

Supplemental Table 3. Average daily rate for adverse events in the in-hospital and post-discharge periods after primary percutaneous coronary intervention for STEMI.

Endpoint	In-hospital period	Subacute phase	Late phase
	(day 0 to hospital discharge)	(Hospital discharge to 30 days)	(day 30 to day 365)
Average daily ischemic rate*	112 / 24609 (0.4551%)	54 / 84428 (0.0640%)	113/1116866 (0.0101%)
Cardiac death	57 / 24609 (0.2316%)	25 / 84428 (0.0296%)	21/1116866 (0.0019%)
Reinfarction	11 / 24609 (0.0447%)	10 / 84428 (0.0118%)	85/1116866 (0.0076%)
Definite stent thrombosis	44 / 24609 (0.1788%)	19 / 84428 (0.0225%)	32/1116866 (0.0029%)
Average daily bleeding rate†	228 / 24609 (0.9265%)	18 / 84428 (0.0213%)	25/1116866 (0.0022%)
Average daily net adverse clinical events rate‡	340 / 24609 (1.3816%)	72 / 84428 (0.0853%)	138/1116866 (0.0124%)
Average daily mortality rate	66 / 24609 (0.2682%)	27 / 84428 (0.0320%)	54/1116866 (0.0048%)
Non-cardiac death	7 / 24609 (0.0284%)	2 / 84428 (0.0024%)	33/1116866 (0.0030%)

Data reported as number of events/patient-day of follow-up (average daily rate) in each time-period. *Defined as cardiac death, reinfarction and definite stent thrombosis. †Defined as non-CABG-related TIMI major and minor bleeding. ‡Defined as any death, reinfarction, definite stent thrombosis, and non-CABG-related TIMI major and minor bleeding.

Supplemental Table 4. Differences in average daily rate across the acute (day 0 to day 3), subacute (day 3 to day 30) and late (day 30 to day 365) phases after primary PCI for STEMI at 1 year

	Acute vs. subacute period			Acute vs. late period		
	Difference	95% CI	P-value	Difference	95% CI	P-value
Average daily ischemic rate*	1.75%	1.43 - 2.06	<0.0001	3.97%	3.66 – 4.28	<0.0001
Cardiac death	1.79%	1.37 - 2.22	<0.0001	5.00%	4.47 - 5.53	<0.0001
Reinfarction	1.61%	1.11 - 2.11	<0.0001	3.35%	2.92 - 3.78	<0.0001
Definite stent thrombosis	1.83%	1.34 - 2.33	<0.0001	4.39%	3.89 - 4.89	<0.0001
Average daily bleeding rate†	2.49%	2.23 – 2.76	<0.0001	6.21%	5.76 – 6.66	<0.0001
Average daily net adverse clinical events rate‡	2.18%	1.98 - 2.39	<0.0001	4.89%	4.66 – 5.13	<0.0001
Average daily mortality rate	1.74%	1.33 – 2.15	<0.0001	4.13%	3.73 – 4.53	<0.0001
Non-cardiac death	1.20%	-0.19 – 2.58	0.09	1.96%	0.78 – 3.14	0.001
	Subacute vs. late period			Early vs. late period		
	Difference	95% CI	P-value	Difference	95% CI	P-value
Average daily ischemic rate*	2.23%	1.92 – 2.54	<0.0001	2.71	2.44 - 2.98	<0.0001
Cardiac death	3.21%	2.69 - 3.73	<0.0001	3.71	3.23 - 4.19	<0.0001
Reinfarction	1.74%	1.32 - 2.15	<0.0001	2.16	1.82 - 2.50	<0.0001
Definite stent thrombosis	2.56%	2.05 - 3.06	<0.0001	3.08	2.64 - 3.52	<0.0001
Average daily bleeding rate†	3.71%	3.23 – 4.20	<0.0001	4.62	4.18 - 5.07	<0.0001
Average daily net adverse	2.71%	2.46 – 2.97	<0.0001	2.87	2.53 - 3.21	<0.0001

clinical events rate‡

Average daily mortality rate	2.39%	2.01 – 2.78	<0.0001	1.03	0.29 - 1.76	0.006
Non-cardiac death	0.76%	-0.11 – 1.63	0.09	3.42	3.20 - 3.64	<0.0001

Least square mean differences, confidence intervals and p-values for pairwise comparisons between the patient-day event rates across the three time periods. Generalized estimating equations were used to test the rate for differences between the three time periods with the patient as a repeated measure and assuming a Poisson distribution.

Supplemental Table 5. Average daily rate for adverse events in the acute (day 0 to day 1), subacute (day 1 to day 30) and late (day 30 to day 365) phases after primary PCI for STEMI according to the randomized PCI antithrombotic treatment.

Endpoint	Acute phase (day 0 to day 1)		ARD	p-value	Subacute phase (day 1 to day 30)		ARD	P-value
	Bivalirudin	UFH + GPI			Bivalirudin	UFH + GPI		
	Average daily ischemic rate	29/1800 (1.6111%)			8/1802 (0.4440%)	+1.1671%		
Cardiac death	13/1800 (0.7222%)	6/1802 (0.3330%)	+0.3892%	0.10	19/52766 (0.0360%)	46/52669 (0.0873%)	-0.0513%	0.0008
Reinfarction	11/1800 (0.6111%)	3/1802 (0.1665%)	+0.4446%	0.03	24/52766 (0.0455%)	34/52669 (0.0646%)	-0.0191%	0.19
Definite stent thrombosis	19/1800 (1.0556%)	2/1802 (0.1110%)	+0.9446%	0.0002	23/52766 (0.0436%)	24/52669 (0.0456%)	-0.002%	0.88
Average daily bleeding rate	8/1800 (0.4444%)	25/1802 (1.3873%)	-0.9429%	0.003	84/52766 (0.1592%)	129/52669 (0.2449%)	-0.0857%	0.002
Average daily mortality rate	14/1800 (0.7778%)	6/1802 (0.3330%)	+0.4448%	0.07	23/52766 (0.0436%)	50/52669 (0.0949%)	-0.0513%	0.002
Non-cardiac death	1/1800 (0.0556%)	0/1802 0.0000%	+0.0556%	0.32	4/52766 (0.0076%)	4/52669 (0.0076%)	0.0000%	0.99
Average daily net adverse clinical events rate	37/1800 (2.0556%)	33/1802 (1.8313%)	+0.2243%	0.63	134/52766 (0.2540%)	208/52669 (0.3949%)	-0.1409%	0.0001

Endpoint	Early phase (day 0 to day 30)		ARD	p-value	Late phase (day 30 to day 365)		ARD	P-value
	Bivalirudin	UFH + GPI			Bivalirudin	UFH + GPI		

	Bivalirudin	UFH + GPI			Bivalirudin	UFH + GPI		
Average daily ischemic rate	79 / 54566 (0.1448%)	87 / 54471 (0.1597%)	-0.0149%	0.53	42 / 562362 (0.0075%)	71 / 554504 (0.0128%)	-0.0053%	0.19
Cardiac death	30 / 54566 (0.0550%)	52 / 54471 (0.0955%)	-0.0405%	0.01	6 / 562362 (0.0011%)	15 / 554504 (0.0027%)	-0.0016%	0.31
Reinfarction	8 / 54566 (0.0147%)	13 / 54471 (0.0239%)	-0.0092%	0.27	20 / 562362 (0.0036%)	40 / 554504 (0.0072%)	-0.0036%	0.20
Definite stent thrombosis	41 / 54566 (0.0751%)	22 / 54471 (0.0404%)	+0.0347%	0.02	16 / 562362 (0.0028%)	16 / 554504 (0.0029%)	-0.0001%	0.97
Average daily bleeding rate	92 / 54566 (0.1686%)	154 / 54471 (0.2827%)	-0.1141%	0.0001	16 / 562362 (0.0028%)	9 / 554504 (0.0016%)	+0.0012%	0.60
Average daily mortality rate	37 / 54566 (0.0678%)	56 / 54471 (0.1028%)	-0.035%	0.048	24 / 562362 (0.0043%)	30 / 554504 (0.0054%)	-0.0011%	0.71
Non-cardiac death	5 / 54566 (0.0092%)	4 / 54471 (0.0073%)	+0.0019%	0.73	18 / 562362 (0.0032%)	15 / 554504 (0.0027%)	+0.0005%	0.84
Average daily net adverse clinical events rate	171 / 54566 (0.3134%)	241 / 54471 (0.4424%)	-0.129%	0.0005	58 / 562362 (0.0103%)	80 / 554504 (0.0144%)	-0.0041%	0.38

Data reported as number of events/patient-day of follow-up in each time-period. ARD: Absolute Risk Difference. GPI: IIB/IIIa Glycoprotein IIB/IIIa inhibitor; UFH: Unfractionated heparin.

Supplemental Table 6. Average daily rate for adverse events in the acute (day 0 to day 3), subacute (day 3 to day 30) and late (day 30 to day 365) phases after primary PCI for STEMI according to the randomized PCI antithrombotic treatment.

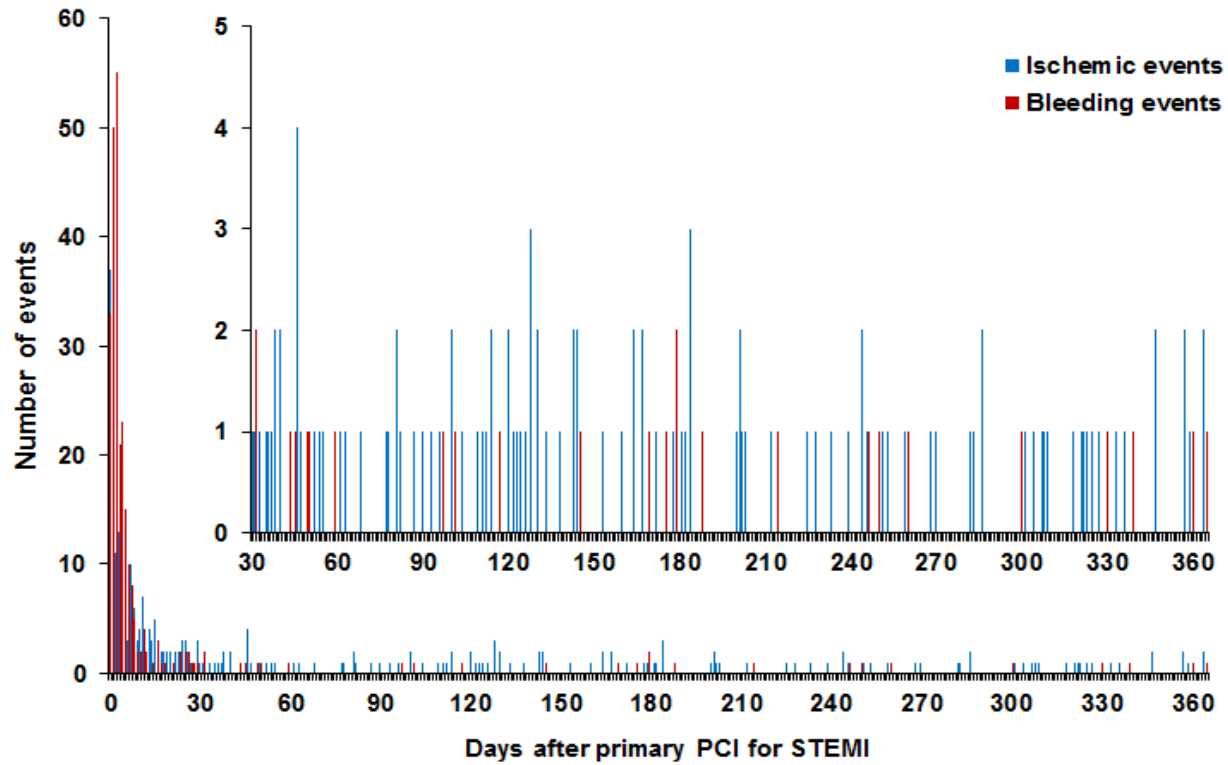
Endpoint	Acute phase (day 0 to day 3)		ARD	p-value	Subacute phase (day 3 to day 30)		ARD	p-value
	Bivalirudin	UFH + GPI			Bivalirudin	UFH + GPI		
	Average daily ischemic rate	51/7138 (0.7145%)			26/7174 (0.3624%)	+0.3521%		
Cardiac death	21/7138 (0.2942%)	19/7174 (0.2648%)	+0.0294%	0.74	11/47428 (0.0232%)	33/47297 (0.0698%)	-0.0466%	0.0009
Reinfarction	21/7138 (0.2942%)	10/7174 (0.1394%)	+0.1548%	0.046	14/47428 (0.0295%)	27/47297 (0.0571%)	-0.0276%	0.04
Definite stent thrombosis	28/7138 (0.3923%)	5/7174 (0.0697%)	+0.3226%	0.0001	14/47428 (0.0295%)	21/47297 (0.0444%)	-0.0149%	0.23
Average daily bleeding rate	53/7138 (0.7425%)	106/7174 (1.4776%)	-0.7351%	<0.0001	39/47428 (0.0822%)	48/47297 (0.1015%)	-0.0193%	0.33
Average daily mortality rate	24/7138 (0.3362%)	19/7174 (0.2648%)	+0.0714%	0.44	13/47428 (0.0274%)	37/47297 (0.0782%)	-0.0508%	0.0007
Non-cardiac death	3/7138 (0.0420%)	0/7174 (0.0000%)	+0.0420%	0.08	2/47428 (0.0042%)	4/47297 (0.0085%)	-0.0043%	0.41
Average daily net adverse clinical events rate	104/7138 (1.4570%)	132/7174 (1.8400%)	+0.383%	0.07	67/47428 (0.1413%)	109/47297 (0.2305%)	-0.0892%	0.001
Endpoint	Early phase (day 0 to day 30)		ARD	p-value	Late phase (day 30 to day 365)		ARD	p-value
	Bivalirudin	UFH + GPI			Bivalirudin	UFH + GPI		

	Bivalirudin	UFH + GPI			Bivalirudin	UFH + GPI		
Average daily ischemic rate	79 / 54566 (0.1448%)	87 / 54471 (0.1597%)	-0.0149%	0.53	42 / 562362 (0.0075%)	71 / 554504 (0.0128%)	-0.0053%	0.19
Cardiac death	30 / 54566 (0.0550%)	52 / 54471 (0.0955%)	-0.0405%	0.01	6 / 562362 (0.0011%)	15 / 554504 (0.0027%)	-0.0016%	0.31
Reinfarction	8 / 54566 (0.0147%)	13 / 54471 (0.0239%)	-0.0092%	0.27	20 / 562362 (0.0036%)	40 / 554504 (0.0072%)	-0.0036%	0.20
Definite stent thrombosis	41 / 54566 (0.0751%)	22 / 54471 (0.0404%)	+0.0347%	0.02	16 / 562362 (0.0028%)	16 / 554504 (0.0029%)	-0.0001%	0.97
Average daily bleeding rate	92 / 54566 (0.1686%)	154 / 54471 (0.2827%)	-0.1141%	0.0001	16 / 562362 (0.0028%)	9 / 554504 (0.0016%)	+0.0012%	0.60
Average daily mortality rate	37 / 54566 (0.0678%)	56 / 54471 (0.1028%)	-0.035%	0.048	24 / 562362 (0.0043%)	30 / 554504 (0.0054%)	-0.0011%	0.71
Non-cardiac death	5 / 54566 (0.0092%)	4 / 54471 (0.0073%)	+0.0019%	0.73	18 / 562362 (0.0032%)	15 / 554504 (0.0027%)	+0.0005%	0.84
Average daily net adverse clinical events rate	171 / 54566 (0.3134%)	241 / 54471 (0.4424%)	-0.129%	0.0005	58 / 562362 (0.0103%)	80 / 554504 (0.0144%)	-0.0041%	0.38

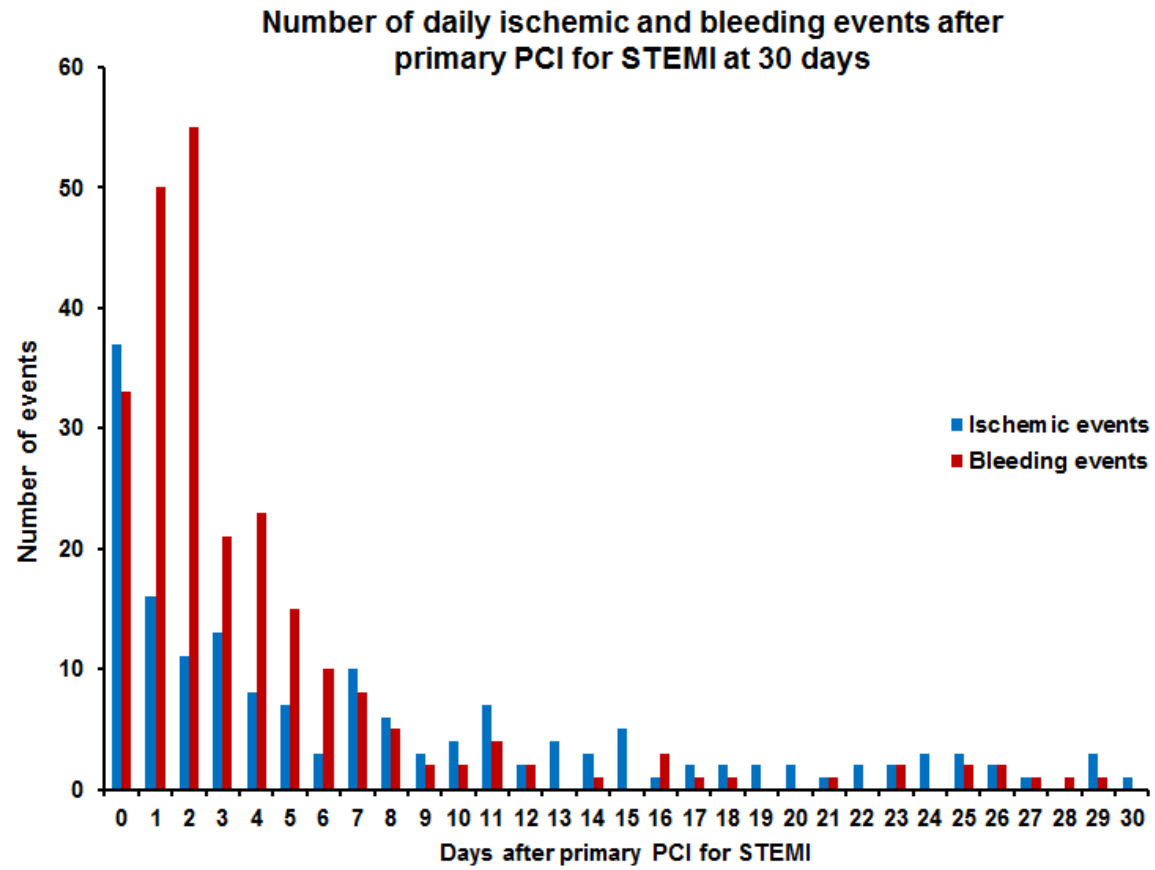
Data reported as number of events/patient-day of follow-up in each time-period. ARD: Absolute Risk Difference. GPI: glycoprotein IIb/IIIa inhibitor; UFH: Unfractionated heparin.

Supplemental Figure 1A

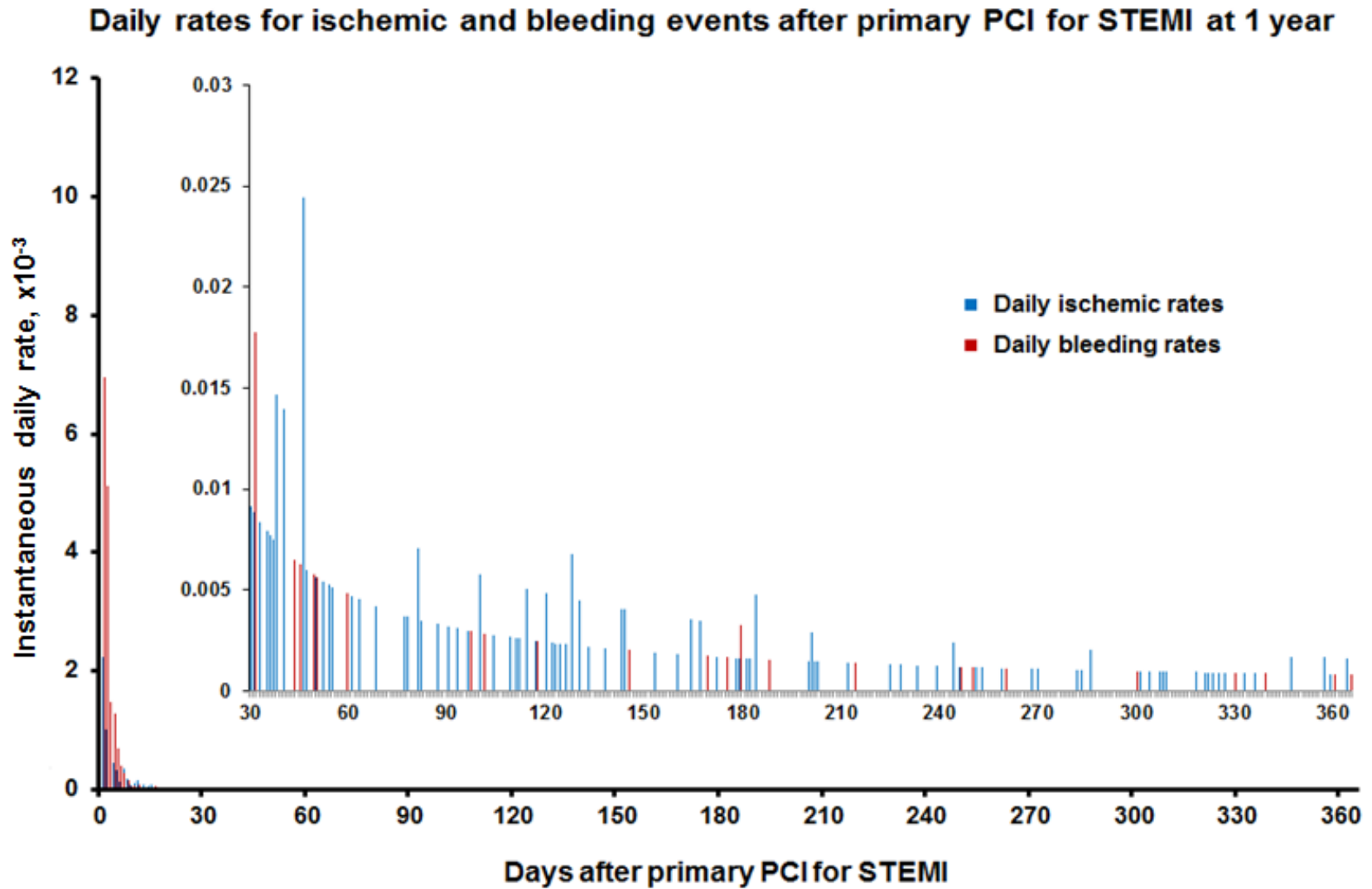
Number of daily ischemic and bleeding events after primary PCI for STEMI at 1 year



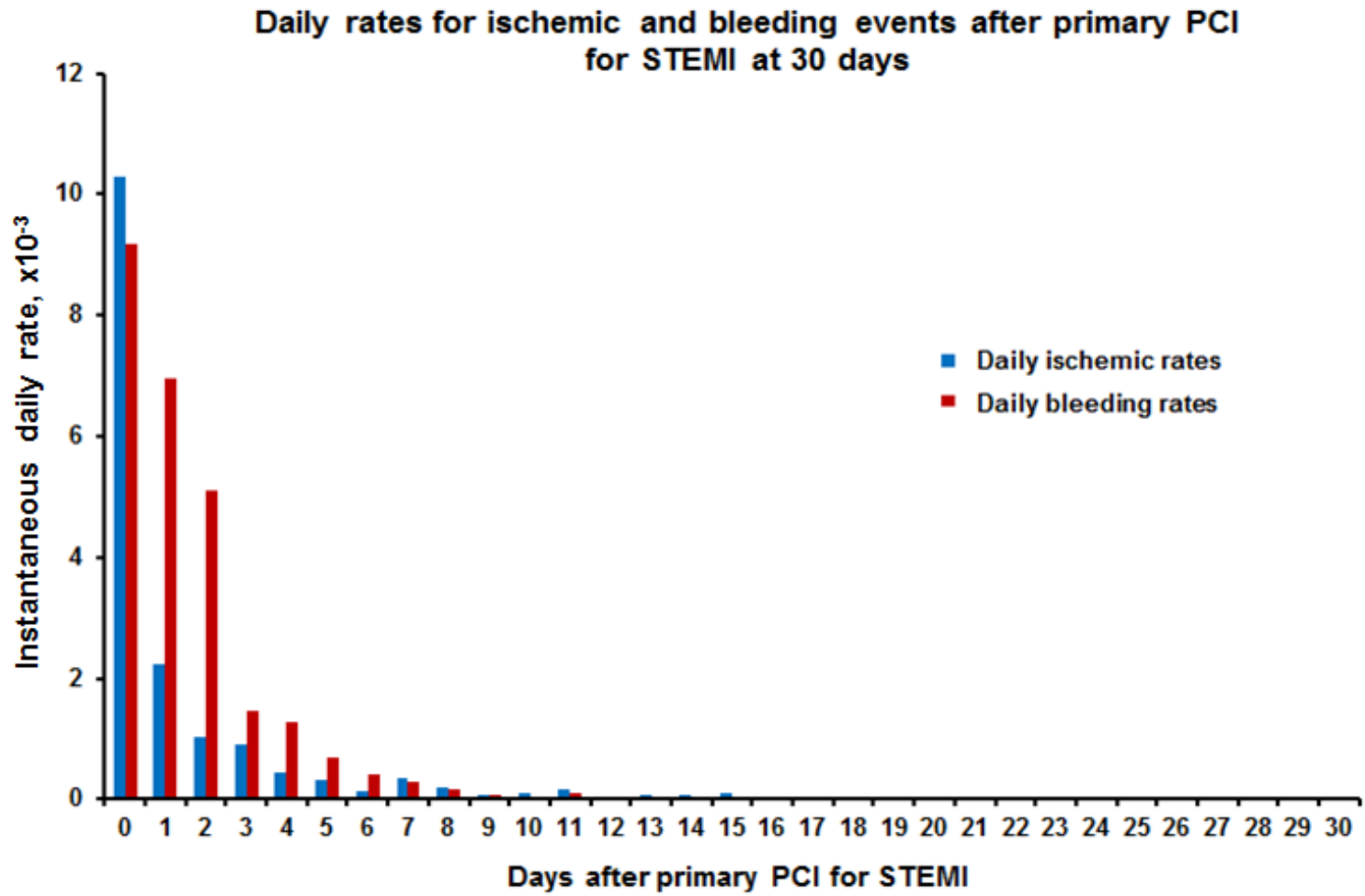
Supplemental Figure 1B.



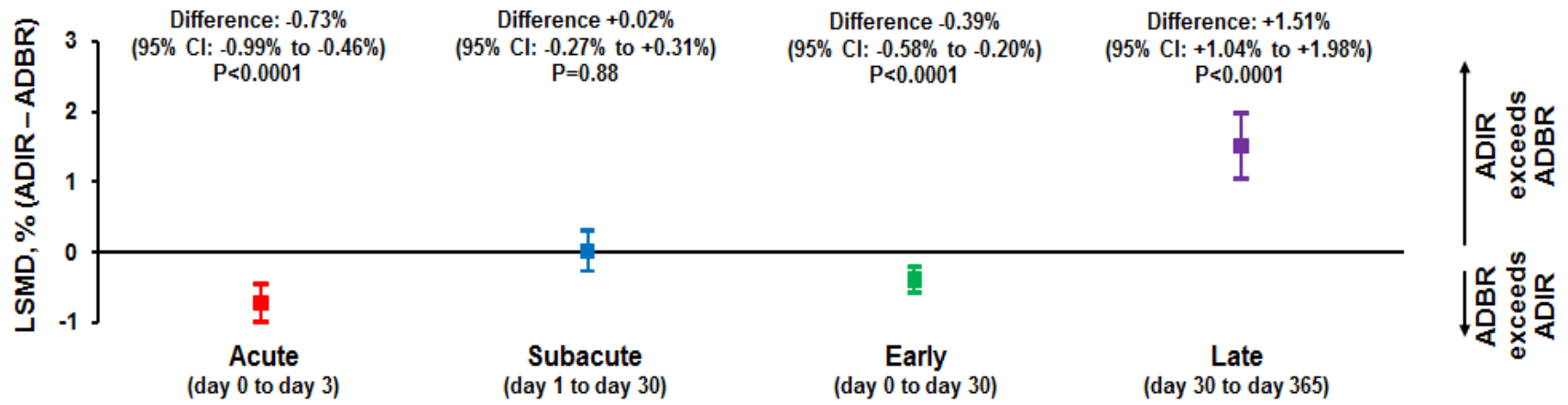
Supplemental Figure 2A.



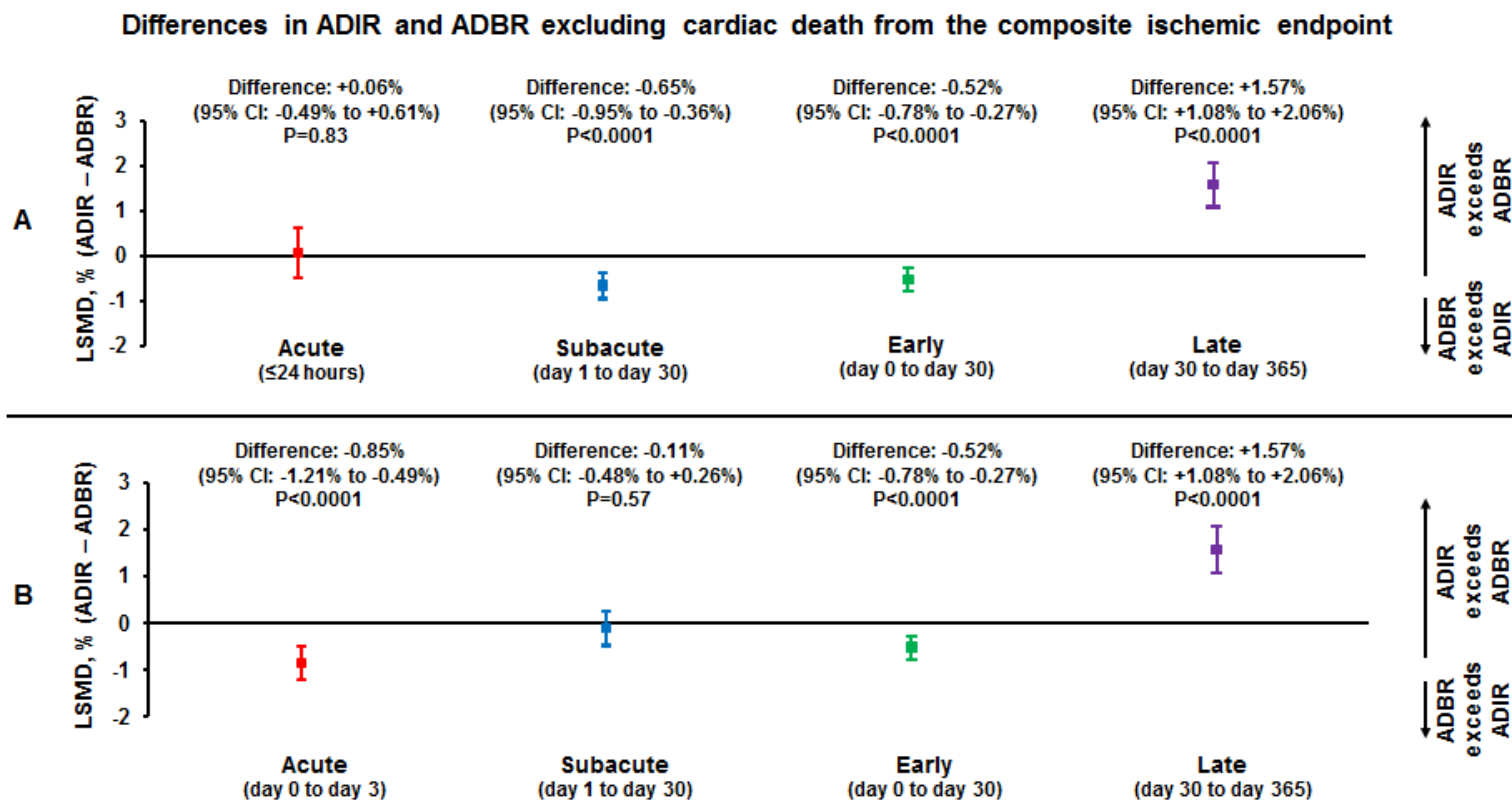
Supplemental Figure 2B.



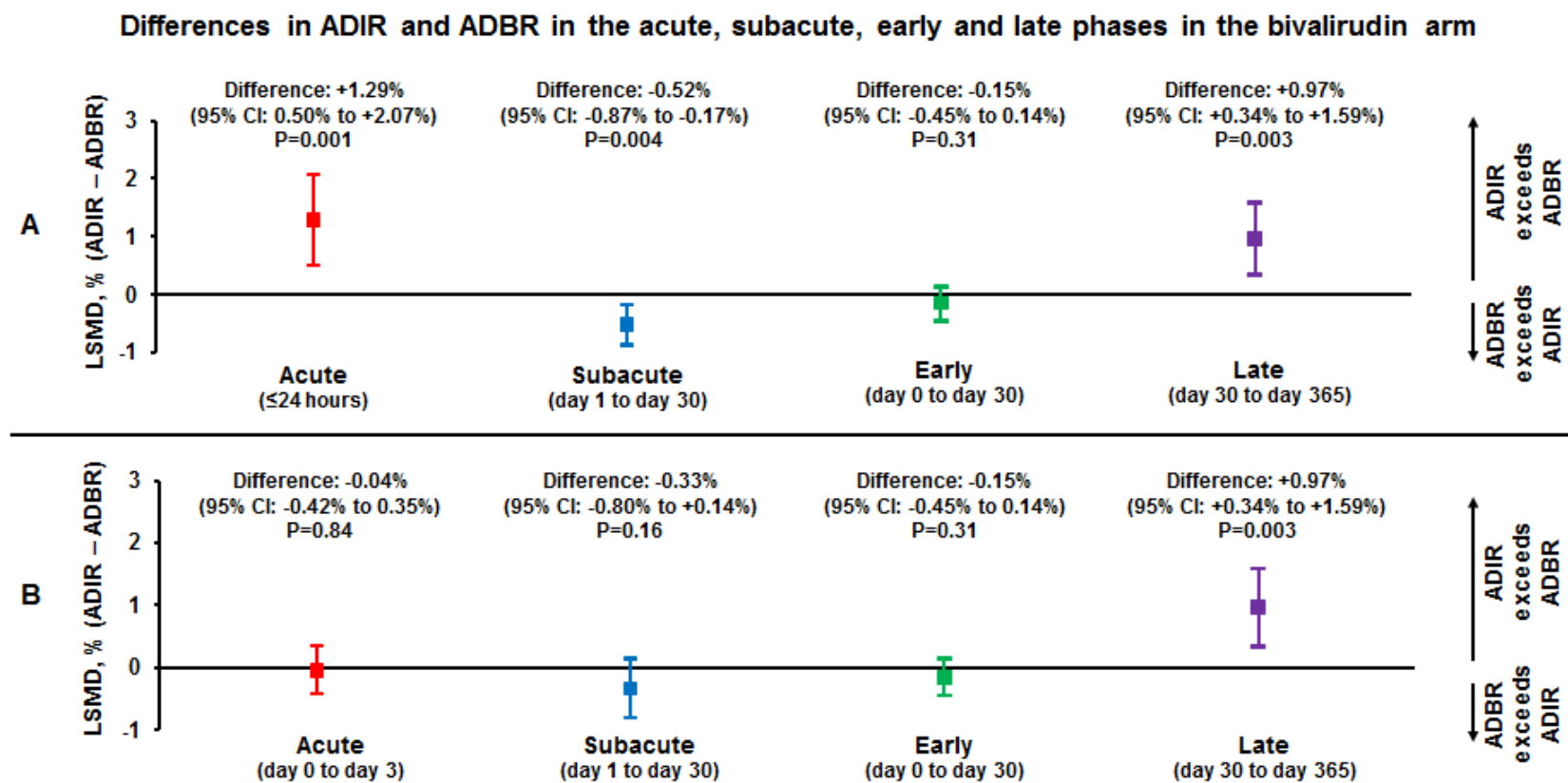
Supplemental Figure 3.



Supplemental Figure 4.



Supplemental Figure 5.



Supplemental Figure 6.

Differences in ADIR and ADBR in the acute, subacute, early and late phases in the heparin + GPI arm

