

LONDON
SCHOOL of
HYGIENE
& TROPICAL
MEDICINE



LSHTM Research Online

Kay, EJ; Yates, LE; Terra, VS; Cuccui, J; Wren, BW; (2016) Recombinant expression of *Streptococcus pneumoniae* capsular polysaccharides in *Escherichia coli*. *Open biology*, 6. p. 150243. ISSN 2046-2441
DOI: <https://doi.org/10.1098/rsob.150243>

Downloaded from: <http://researchonline.lshtm.ac.uk/2545690/>

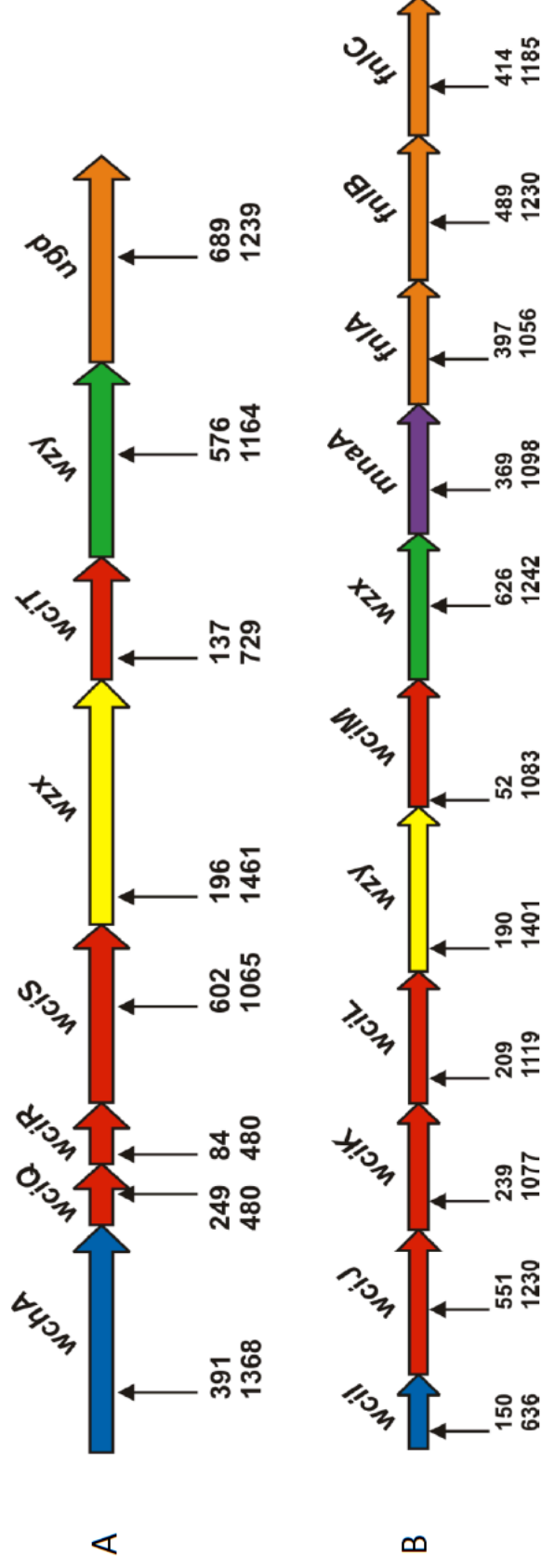
DOI: <https://doi.org/10.1098/rsob.150243>

Usage Guidelines:

Please refer to usage guidelines at <https://researchonline.lshtm.ac.uk/policies.html> or alternatively contact researchonline@lshtm.ac.uk.

Available under license: <http://creativecommons.org/licenses/by/2.5/>

<https://researchonline.lshtm.ac.uk>



Supplementary Fig 1. Location of transposon insertion sites within the cloned capsule locus. A) Transposon location in pB-8, the cloned serotype 8 locus. B) Transposon location in pB-4, the cloned serotype 4 locus. Genes are represented by coloured arrows: undecaprenyltransferase, blue; glycosyltransferases, red; flippase, yellow; polymerase, green; and sugar biosynthesis enzymes, purple or orange. The approximate location of insertion of the transposon is indicated by the vertical black arrows; the top number indicates the insertion site of the transposon in bp from 5' end of the gene, the length of which is shown by the bottom number in bp.