

LONDON  
SCHOOL of  
HYGIENE  
& TROPICAL  
MEDICINE



LSHTM Research Online

Aaby, P; Martins, CL; Garly, ML; Andersen, A; Fisker, AB; Claesson, MH; Ravn, H; Rodrigues, A; Whittle, HC; Benn, CS; (2014) Measles vaccination in the presence or absence of maternal measles antibody: Impact on child survival. *Clinical infectious diseases*. ISSN 1058-4838 DOI: <https://doi.org/10.1093/cid/ciu354>

Downloaded from: <http://researchonline.lshtm.ac.uk/1726167/>

DOI: <https://doi.org/10.1093/cid/ciu354>

**Usage Guidelines:**

Please refer to usage guidelines at <http://researchonline.lshtm.ac.uk/policies.html> or alternatively contact [researchonline@lshtm.ac.uk](mailto:researchonline@lshtm.ac.uk).

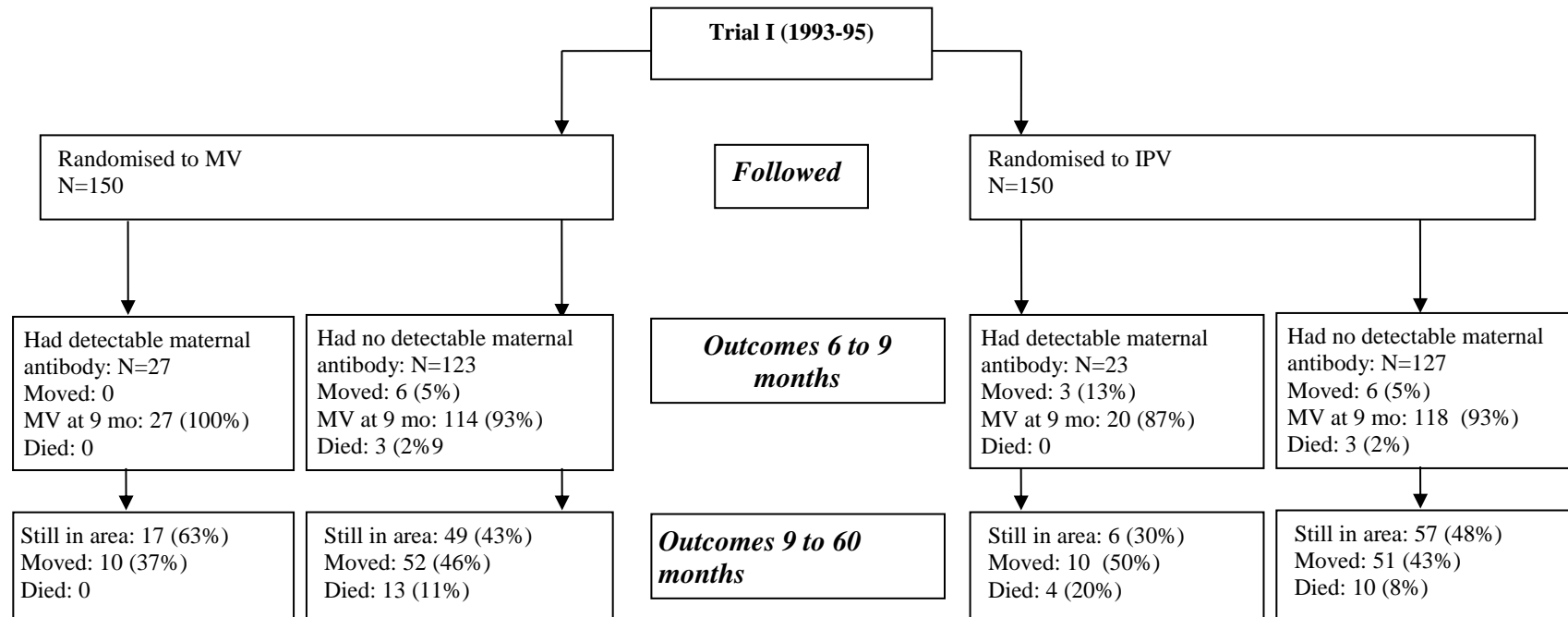
Available under license: <http://creativecommons.org/licenses/by-nc-nd/2.5/>

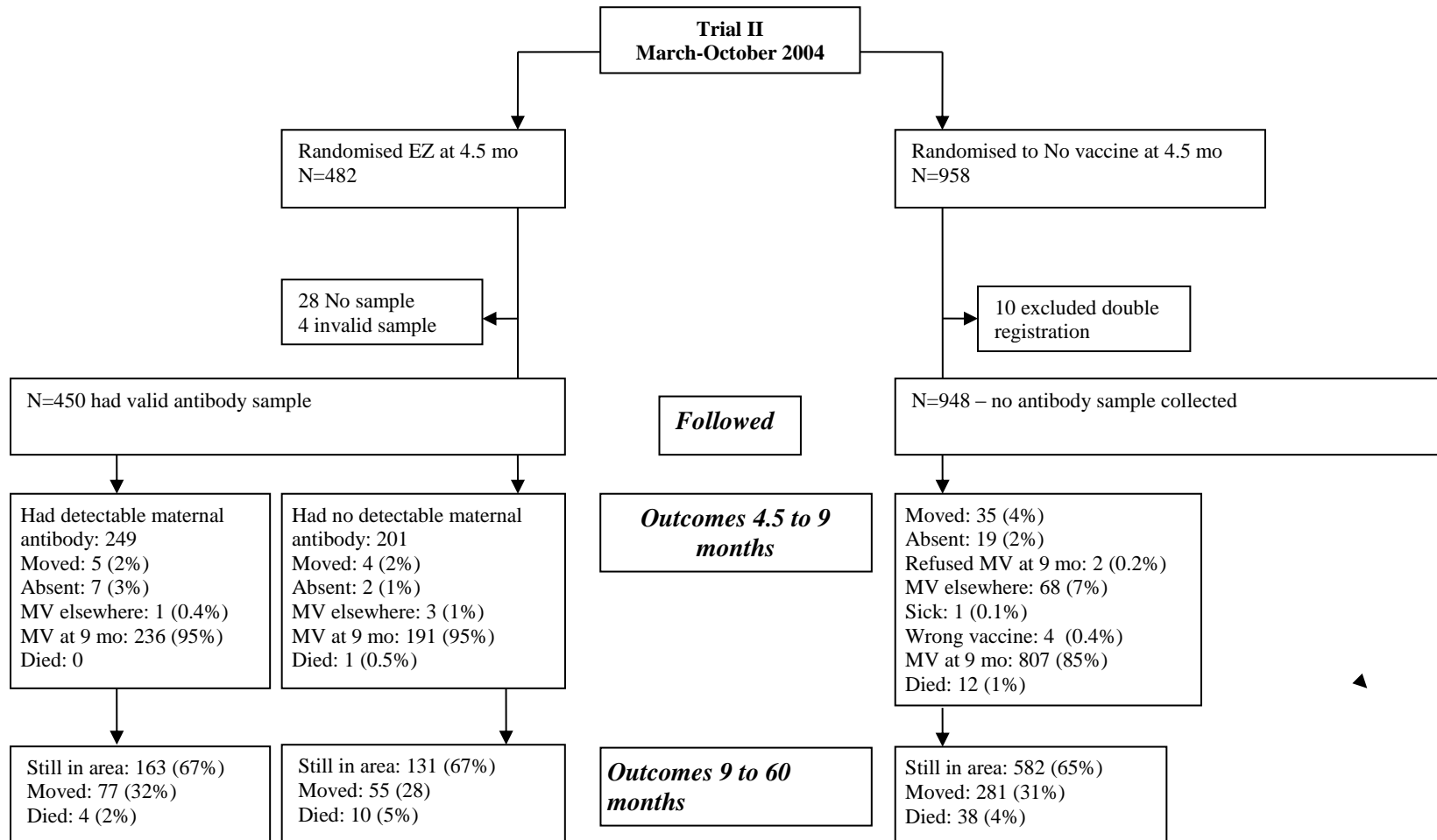
<https://researchonline.lshtm.ac.uk>

**Supplementary table 1. Causes of death by verbal autopsy according to maternal antibody level at time of measles vaccination in Trial II<sup>5</sup>**

Cause of death	Undetectable measles antibody level	Had maternal measles antibody
Respiratory infection	3	1
Diarrhoea, diarrhoea and vomiting	2	2
Malaria, fever and anaemia	4	
Traditional ceremony (mongoloid child)	1	
No information (family moved)	1	1
<b>Total</b>	<b>11</b>	<b>4</b>

**Supplementary Figure 1: Trial diagrams for the two early two-dose measles vaccination trials.**





**Notes: MV=measles vaccine; mo=month**