

LONDON  
SCHOOL of  
HYGIENE  
& TROPICAL  
MEDICINE



Walters, S; Maringe, C; Butler, J; Rachet, B; Barrett-Lee, P; Bergh, J; Boyages, J; Christiansen, P; Lee, M; Wrnberg, F; Allemani, C; Engholm, G; Fornander, T; Gjerstorff, ML; Johannesen, TB; Lawrence, G; McGahan, CE; Middleton, R; Steward, J; Tracey, E; Turner, D; Richards, MA; Coleman, MP; ICBP Module 1 Working Group, (2013) Breast cancer survival and stage at diagnosis in Australia, Canada, Denmark, Norway, Sweden and the UK, 2000-2007: a population-based study. *British journal of cancer*, 108 (5). pp. 1195-208. ISSN 0007-0920 DOI: <https://doi.org/10.1038/bjc.2013.6>

Downloaded from: <http://researchonline.lshtm.ac.uk/639015/>

DOI: [10.1038/bjc.2013.6](https://doi.org/10.1038/bjc.2013.6)

#### Usage Guidelines

Please refer to usage guidelines at <http://researchonline.lshtm.ac.uk/policies.html> or alternatively contact [researchonline@lshtm.ac.uk](mailto:researchonline@lshtm.ac.uk).

Available under license: <http://creativecommons.org/licenses/by-nc-nd/2.5/>

## **Breast cancer survival and stage at diagnosis: a population-based study in Australia, Canada, Denmark, Norway, Sweden and the UK, 2000-2007**

Running title: breast cancer survival by stage at diagnosis in six countries

S. Walters<sup>1</sup>, C. Maringe<sup>1</sup>, J. Butler<sup>2</sup>, B. Rachet<sup>1</sup>, P. Barrett-Lee<sup>3</sup>, J. Bergh<sup>4</sup>, J. Boyages<sup>5</sup>, P. Christiansen<sup>6</sup>, M. Lee<sup>7</sup>, F. Wärnberg<sup>8</sup>, C. Allemani<sup>1</sup>, G. Engholm<sup>9</sup>, T. Fornander<sup>10</sup>, M. L. Gjerstorff<sup>11</sup>, T. B. Johannesen<sup>12</sup>, G. Lawrence<sup>13</sup>, C.E. McGahan<sup>14</sup>, R. Middleton<sup>15</sup>, J. Steward<sup>16</sup>, E. Tracey<sup>17</sup>, D. Turner<sup>18</sup>, M. A. Richards<sup>19</sup>, M. P. Coleman<sup>1</sup> and the ICBP Module 1 Working Group\*

- <sup>1</sup> Cancer Research UK Cancer Survival Group, London School of Hygiene and Tropical Medicine, London, UK
- <sup>2</sup> St Bartholomew's and Royal Marsden Hospitals, London, UK
- <sup>3</sup> Velindre NHS Trust, Cardiff, Wales, UK
- <sup>4</sup> Karolinska Institutet, Stockholm, Sweden
- <sup>5</sup> Macquarie University Cancer Institute, Sydney, New South Wales, Australia
- <sup>6</sup> Aarhus University Hospital, Aarhus, Denmark
- <sup>7</sup> University Hospitals Coventry and Warwickshire NHS Trust, Coventry, UK
- <sup>8</sup> Uppsala University Hospital, Uppsala, Sweden
- <sup>9</sup> Department of Cancer Prevention and Documentation, Danish Cancer Society, Copenhagen, Denmark
- <sup>10</sup> Södersjukhuset, Stockholm, Sweden
- <sup>11</sup> Danish Cancer Registry, Statens Serum Institut - National Institute for Health Data and Disease Control, Copenhagen, Denmark
- <sup>12</sup> Norwegian Cancer Registry, Oslo, Norway
- <sup>13</sup> West Midlands Cancer Intelligence Unit, Birmingham, UK
- <sup>14</sup> Cancer Surveillance and Outcomes, British Columbia Cancer Agency, Vancouver, British Columbia, Canada
- <sup>15</sup> Northern Ireland Cancer Registry, Belfast, Northern Ireland, UK
- <sup>16</sup> Welsh Cancer Intelligence and Surveillance Unit, Cardiff, UK
- <sup>17</sup> Cancer Institute New South Wales, Sydney, New South Wales, Australia
- <sup>18</sup> CancerCare Manitoba, Winnipeg, Manitoba, Canada
- <sup>19</sup> National Cancer Action Team, Department of Health, London, UK

\* ICBP Module 1 Working Group

**Programme Board:** S. Brostrøm (Danish National Board of Health, Hospital Services and Emergency Management, Copenhagen, Denmark); H. Bryant (Canadian Partnership Against Cancer, Toronto, Ontario, Canada); D. Currow (Cancer Institute New South Wales, Sydney, New South Wales, Australia); A. Gavin (Northern Ireland Cancer Registry, Belfast, UK); G. Gunnarsson (Swedish Association of Local Authorities and Regions, Stockholm, Sweden); J. Hanson (Welsh Cancer National Specialist Advisory Group, Cardiff, UK); T. Harper (Cancer Council Victoria, Carlton, Victoria, Australia); S. Kaasa (University Hospital of Trondheim, Trondheim, Norway); M. A. Richards (National Cancer Action Team, Department of Health, London, UK); M. Sherar (Cancer Care Ontario, Toronto, Ontario, Canada); B. Thomas (Department of Health Victoria, Melbourne, Victoria, Australia)

**Module 1 Collaborators and Cancer Registries:** J. Adolfsson (Regional Cancer Centre, Stockholm County Council and the CLINTEC Department, Karolinska Institutet, Stockholm, Sweden); O. Andersen (National Board of Health, Health Planning Division, Copenhagen, Denmark); H. Bryant (Canadian Partnership Against Cancer, Toronto, Ontario, Canada); A. Coldman (Cancer Surveillance and Outcomes, British Columbia Cancer Agency, Vancouver, British Columbia, Canada); D. Dhaliwal (CancerCare Manitoba, Winnipeg, Manitoba, Canada); G. Engholm (Department of Cancer Prevention and Documentation, Danish Cancer Society, Copenhagen, Denmark); D. Forman (Section of Cancer Information, International Agency for Research on Cancer, Lyon, France); M. L. Gjerstorff (Danish Cancer Registry, Statens Serum Institut - National Institute for Health Data and Disease Control, Copenhagen, Denmark); J. Hatcher (Alberta Health Services, Edmonton, Alberta, Canada); C. Hosbond (National Board of Health, Copenhagen, Denmark); T. B. Johannesen (Norwegian Cancer Registry, Oslo, Norway); C. Lagord (West Midlands Cancer Intelligence Unit, Birmingham, UK); M. Lambe (Regional Oncological Centre, Uppsala University Hospital, Uppsala, Sweden and the Karolinska Institutet, Stockholm, Sweden); G. Lawrence (West Midlands Cancer Intelligence Unit, Birmingham, UK); A. MacDonald (West Midlands Cancer Intelligence Unit, Birmingham, UK); L. Marrett (Cancer Care Ontario, Toronto, Ontario, Canada); C. E. McGahan (Cancer Surveillance and Outcomes, British Columbia Cancer Agency, Vancouver BC, Canada); J. McLaughlin (Cancer Care Ontario, Toronto, Ontario, Canada); D. Meechan (Trent Cancer Registry, Sheffield, UK); R. Middleton (Northern Ireland Cancer Registry, Belfast, UK); K. Milnes (Cancer Care Ontario, Toronto, Ontario, Canada); D. Nishri (Cancer Care Ontario, Toronto, Ontario, Canada); N. Quin (Cancer Council Victoria, Carlton, Victoria, Australia); L. Rabenek (Cancer Care Ontario, Toronto, Ontario, Canada); C. Russell (Alberta Health Services, Edmonton, Alberta, Canada); J. Shin (Canadian Partnership Against Cancer, Toronto, Ontario, Canada); J. Steward (Welsh Cancer Intelligence and Surveillance Unit, Cardiff, Wales, UK); E. Tracey (Cancer Institute New South Wales, Sydney, New South Wales, Australia); D. Turner (CancerCare Manitoba, Winnipeg, Manitoba, Canada)

**Clinical Committee:** P. Barrett-Lee (Velindre NHS Trust, Cardiff, Wales, UK); J. Bergh (Karolinska Institutet, Stockholm, Sweden); J. Boyages (Macquarie University Cancer Institute, Sydney New South Wales, Australia); J. Butler (St Bartholomew's and the Royal Marsden Hospital, London, UK); P. Christiansen (Aarhus University Hospital, Aarhus, Denmark); T. Fornander (Södersjukhuset, Stockholm, Sweden); S. Kirk (The Ulster Hospital, Northern Ireland, UK); M. Lee (University Hospitals Coventry and Warwickshire NHS Trust, Coventry, UK); I. Monypenny (Cardiff and Vale NHS Trust, Cardiff, Wales, UK); G. Porter (Dalhousie University Faculty of Medicine, Nova Scotia, Canada); F. Wärnberg (Uppsala University Hospital, Uppsala, Sweden); E. Wist (The Norwegian Radium Hospital, Oslo, Norway)

**Central Analytic Team:** S. Walters, C. Maringe, B. Rachet, C. Allemani, M. P. Coleman (Cancer Research UK Cancer Survival Group, London School of Hygiene and Tropical Medicine, London, UK)

**Correspondence to:** Dr Sarah Walters, Faculty of Epidemiology and Population Health, London School of Hygiene and Tropical Medicine, Keppel Street, London WC1E 7HT, UK

Email: sarah.walters@lshtm.ac.uk Tel: +44(0)20 7299 4641 Fax: +44(0)20 7436 4230

## **Structured abstract**

### **Background**

We investigate whether differences in breast cancer survival in six high-income countries can be explained by differences in stage at diagnosis using routine data from population-based cancer registries.

### **Methods**

We analysed data on 257,362 women diagnosed with breast cancer during 2000-7 in thirteen population-based cancer registries in Australia, Canada, Denmark, Norway, Sweden and the UK. Flexible parametric hazard models were used to estimate net survival and the excess hazard of dying from breast cancer up to three years after diagnosis.

### **Results**

Age-standardised three-year net survival was 87-89% in the UK and Denmark, and 91-94% in the other four countries. Stage at diagnosis was relatively advanced in Denmark: 30% of women had TNM stage I disease, compared to 42-45% elsewhere. Women in the UK had low survival for TNM stage III-IV disease compared to other countries.

### **Conclusion**

International differences in breast cancer survival are partly explained by differences in stage at diagnosis, and partly by differences in stage-specific survival. Low overall survival arises if the stage distribution is adverse (e.g. Denmark) but stage-specific survival is normal; or if the stage distribution is typical but stage-specific survival is low (e.g. UK). International differences in staging diagnostics and stage-specific cancer therapies should be investigated.

**Key words:** breast cancer, survival, stage, population-based

## Introduction

There are large international differences in survival from breast cancer, both between European countries (Berrino *et al.*, 2007) and world-wide (Coleman *et al.*, 2008; Sankaranarayanan *et al.*, 2010). The International Cancer Benchmarking Partnership (ICBP) analysed population-based data for women diagnosed with breast cancer during 1995-2007 in six countries with comparable wealth, access to universal health care and high-quality cancer registration. Survival was highest in Sweden, Australia and Canada, intermediate in Norway, lower in Denmark and lowest in the UK. Inequalities persisted in 2005-7, when one-year survival was 4% lower in the UK than in Sweden (Coleman *et al.*, 2011).

These survival differences may be due to variations in stage at diagnosis arising because of differences in screening, cancer awareness or referral pathways. Alternatively, international differences may exist in stage-specific survival, indicating differences in treatment, co-morbidity or staging accuracy. Understanding the balance of these explanations is important to cancer control strategies. Routinely collected data on stage are difficult to compare, because of variations in clinical classification and coding, and in how stage is recorded and processed by cancer registries. Internationally recognised staging systems such as the Tumour, Nodes and Metastasis (TNM) classification for malignant tumours (Sobin *et al.*, 2009) are not universally adopted, and locally defined systems remain in use (Walters *et al.*, 2013). Furthermore, cancer registries do not routinely collect full information on the source of stage data, such as the TNM version used, the timeframe after diagnosis within which stage was recorded, whether it was defined clinically or pathologically, and whether tumour size was recorded before or after neo-adjuvant therapy.

Population-based comparisons of breast cancer survival by stage have generally been limited to pair-wise contrasts between countries with similar registration processes (Jensen *et al.*, 2004; Christensen *et al.*, 2004; Woods *et al.*, 2009), or 'high-resolution' studies that abstract stage from the medical records of large, representative samples of patients from cancer registries (Allemani *et al.*, 2012; Sant *et al.*, 2003). International high-resolution studies are costly and time-consuming, and dependent on the accessibility of medical records. Survival comparisons that use routinely collected data

on stage for all patients in each jurisdiction would clearly be desirable, and may be possible if extensive quality control is conducted (Walters *et al.*, 2013). Here, we analyse survival with routinely collected data for all women registered with breast cancer in regional or national registries in these six countries, thereby enabling the largest international comparison of survival by stage at diagnosis.

We show how the distribution of stage at diagnosis varies in these six countries. Age-specific and age-standardised net survival and the excess hazard of dying up to three years are presented by stage at diagnosis.

## **Methods**

### *Data*

The International Cancer Benchmarking Partnership (ICBP) obtained data from population-based cancer registries in Australia, Canada, Denmark, Norway, Sweden and the UK on 926,179 women diagnosed with breast cancer during 1995-2007 and followed up to 31 December 2007. National data were available from Denmark and Norway. Data from Australia and Canada were from state registries in New South Wales and Victoria (Australia) and Alberta, British Columbia, Manitoba and Ontario (Canada), representing 59.7% (11.4 of 19.2 million) and 64.9% (19.9 of 31.0 million) of the respective populations. For the UK, data were obtained from England, Northern Ireland and Wales, but not from Scotland (91.7% of the UK population; 54 of 59 million). The Swedish data were from the Uppsala-Örebro and Stockholm-Gotland health regions (42.8% of the Swedish population; 3.8 of 8.9 million), and were clinical data covering 97% of patients in the regional cancer registry.

We restricted analysis to women diagnosed with a primary, invasive, malignant neoplasm of the breast (ICD-10 codes: C50.0-C50.9). Tumours that were benign, *in situ* or of uncertain behaviour were excluded: of the remaining 860,971 women, a further 3.2% (27,621) were excluded because their vital status was unknown, key dates were invalid or their cancer was registered only from a death certificate or at autopsy. Ductal Carcinoma *In Situ* tumours were excluded because they are not systematically or consistently recorded by cancer registries. These are standard exclusion criteria

designed to improve internal validity and consistency in population-based cancer survival studies. Full details of quality control procedures have been described (Coleman *et al.*, 2011).

We restricted analysis of survival by stage to women diagnosed during 2000-7 (535,537 women) when stage data were more complete (Walters *et al.*, 2013). We further restricted analysis to those registries where over half of all patients had a valid stage, and where there was no sudden change in the availability of stage over time. This led to the exclusion of Victoria (Australia), and Alberta and Ontario (Canada). Only 49% of patients in England had a valid stage, but we could include five of the eight regional registries with stage data for 50% or more of registered patients. The Danish data were restricted to 2004-7, because earlier data were not coded to TNM and were known to be unreliable for international comparisons. The final sample consisted of 257,362 women.

To define ‘valid stage’, we consolidated the available data on stage, which had been coded to a variety of classification systems. For most countries, we could use the raw data to construct a TNM stage. In Australia, stage was categorised as ‘localised, regional, distant’. The Australian system is equivalent to the US Surveillance and Epidemiology End Results Summary Stage 2000 (SEER SS2000) (Young *et al.*, 2001), which is more widely known and better documented. In order to include Australia in the comparisons, we mapped the TNM system used in all the other countries to SEER SS2000. This mapping relied on the availability of the component T, N and M codes, whereas in England, only TNM stage I-IV data were available. We therefore present two sets of analyses, one based on the TNM classification, which is more relevant for clinicians but does not include Australia, and another based on SEER SS2000, which enables comparisons with Australia but excludes England (Walters *et al.*, 2013).

#### *Ethical approval*

The study protocol was approved by the South East Research Ethics Committee of the National Health Service on April 21, 2010 (10/H1102/19). The study protocol and the Cancer Research UK Cancer Survival Group’s system-level security policy at LSHTM were approved by the Ethics and Confidentiality Committee of the National Information Governance Board (NIGB) on April 21, 2010 (extension of PIAG 1-05(c)2007).

Registries outside the UK obtained ethical approvals in their jurisdictions (details available on request).

#### *Net survival and excess mortality*

Net survival is the recommended method for estimating cancer survival using population-based data (Pohar-Perme *et al.*, 2012), because cause of death data may be incomplete or unavailable, and death certification may not accurately record cancer as the underlying cause of death in comparable fashion between countries and over time (Laurenti *et al.*, 2000). Net survival is the survival of cancer patients, after controlling for other causes of death (background mortality). Background mortality is estimated by fitting life tables specific to calendar year, region of residence and single year of age (Coleman *et al.*, 2011).

Net survival was modelled on the log cumulative excess hazard scale in a flexible parametric framework using the *stpm2* (Lambert and Royston, 2009) command in Stata version 12 (StataCorp LP, College Station, Texas). The availability of follow-up data beyond the last boundary for which we want to estimate survival is important for the stability of the model, so we present survival estimates up to three years, even though we had longer follow-up for some patients (Remontet *et al.*, 2007). We also present the excess hazard, the mortality counterpart to net survival, which is the instantaneous rate of dying from breast cancer, over and above all other causes of death, and which shows how breast cancer mortality changes with time after diagnosis.

We ran stratified, stage-specific models, treating patients with missing stage as a distinct category. Restricted cubic splines were used to allow for non-linearity in the effect of age and time since diagnosis on the excess hazard (Durrleman and Simon, 1989). We allowed for non-proportional effects of country and age on the hazard of dying, by introducing interactions with the splines of time. We used a range of tests to ascertain goodness of fit and to select our final model for each stage of diagnosis, including the Akaike Information Criterion, log-likelihood ratio tests, and examination of the Martingale residuals. Where possible, we compared the results of our selected model with those from a slightly more flexible model (e.g. by introducing an interaction



term or an extra degree of freedom in the baseline hazard). Our selected models were robust to this increased flexibility.

#### *Imputation of stage data*

To determine the likely stage distribution among women with missing data on stage in each registry, we conducted multiple imputation using chained equations with the *ice* command in Stata 12, specifying an ordered logistic model (White *et al.*, 2011; Nur *et al.*, 2010). We imputed TNM stage I-IV and SEER SS2000. We first used logistic regression models to determine which variables significantly predicted the pattern of missingness or were associated with stage. These variables were included in the imputation models. In all models, we included vital status, the non-linear effect of the log cumulative excess hazard and the non-linear effect of age at diagnosis. Where necessary, we also included sub-site, year of diagnosis and interactions between the log cumulative excess hazard and age, year and sub-site. We ran each imputation model fifteen times and combined the results under Rubin's rules (White *et al.*, 2011).

We repeated the modelling strategy for stage-specific survival on each of the 15 imputed datasets. The range of estimates generated from these iterations was compared to the survival estimate based on the observed stage data.

All-ages estimates were age-standardised using stage-specific weights derived from the age distribution of patients in all jurisdictions combined, in the age categories 15-44, 45-54, 55-64, 65-74, 75-84 and 85-99 years (see web appendix 1).

## **Results**

#### *Distribution of age and stage*

The mean age at diagnosis ranged from 61 years in Australia to 63 years in the UK, Denmark and Sweden (Table 1). The proportion of patients with a valid stage ranged from 74.7% in the UK to 92.1% in Australia. Women aged 70-99 years were more likely to be missing stage in all countries, except Sweden (Figure 1).

*Insert Table 1*

### *Insert Figure 1*

Among women with TNM stage, the proportion with stage I disease was 30.1% in Denmark, compared with 42-45% in other countries. The proportion with stage III or IV disease ranged from 8% in Sweden to 22% in Denmark (Table 1). For SEER SS2000 stage, the proportion of women with 'localised' disease ranged from 45.7% in Denmark to 69.9% in Sweden, and for 'distant' disease from 1.7% in the UK (Northern Ireland and Wales only) to 6.9% in Denmark.

Imputation of missing data only had a slight impact on these stage distributions. The proportion with TNM stage III-IV was 0.1-3.8% higher after imputation, and the effect was similarly small for SEER SS2000.

Both TNM and SEER SS2000 stage distributions were generally more favourable for women aged 50-69 (the 'screened age group'). Older women were more likely to have metastatic disease than younger women (Figure 1).

### *Net survival*

In the analyses using TNM, age-standardised net survival (all stages combined) at one year ranged from 94.3% in the UK to 98.4% in Sweden (Table 2) and at three years from 87.4% in the UK to 94.1% in Sweden (Table 3). Survival in Denmark and the UK was significantly lower than in the other countries, at both one and three years, and it was highest in Sweden.

### *Insert Tables 2 and 3*

For women with TNM stage I-II disease, one-year age-standardised net survival was close to 100% in all countries. The international range was wider for women with more advanced disease. One-year survival for stage IV disease varied from 53.0% in the UK to 66.9% in Sweden, a range of 13.9%. The range was also wide for women with missing data, for whom one-year survival varied from 87.3% in the UK to 96.8% in Sweden. Women missing TNM stage in Denmark and the UK had three-year survival that was 8.6-16.1% lower than in other countries (Table 3).

International differences in overall survival (all stages combined) were widest for women aged 70-99 years, at both one and three years. For example, three-year survival was 4.1% higher in Sweden than in the UK for women aged 50-69 years, but 12.3% higher for women aged 70-99 years. The wider international differences for older women were also evident for stage-specific survival.

The international pattern of survival differs between the TNM and SEER SS2000 analyses because patients in England were only included in the TNM analyses (51% of all TNM-staged patients, 114,557/225,033), and Australian patients were only included in the SEER SS2000 analyses (23% of all SEER SS2000 patients, 32,329/142,805).

Survival for women with SEER SS2000 'localised' and 'regional' disease was high in all countries (over 97% at one year). Among women with 'distant' disease, one-year survival varied from 62.4% in Norway to 70.1% in Australia. The international range for these women was wider at three years, when net survival was significantly lower in Norway than elsewhere, intermediate in Canada, Denmark and Sweden, and 9.1-22.5% higher in the UK and Australia than in the other three countries. One- and three-year net survival for unstaged women was lowest in Denmark and the UK.

In all six countries, women aged 70-99 years generally had lower overall and stage-specific survival at both one and three years than women aged 50-69 years. This difference was widest in the UK. Women aged 70-99 years with TNM stage IV disease in the UK had much lower one-year survival than women aged 50-69 years (42.2% vs. 60.0%); the difference in Sweden was smaller (58.5% vs. 69.1%).

#### *Excess hazards*

The stage-specific excess hazard of dying from breast cancer for women with TNM stage I-III generally rose with time since diagnosis (Figure 2). However, for patients with distant disease, excess mortality declined slightly with time, probably because the most frail patients, and those with the most extensive disease, died soon after diagnosis. Among women with TNM stage I disease, those diagnosed in Denmark had particularly high excess mortality up to one year after diagnosis. Women in the UK had relatively high excess mortality in the first year for stages II-IV, and at all stages at three years.

The excess hazard rose with time since diagnosis for women with SEER SS2000 ‘localised’ and ‘regional’ cancers in all countries, and fell for those with ‘distant’ disease. International differences in the excess hazard were most notable soon after diagnosis, particularly among women with ‘regional’ disease.

*Insert Figure 2*

*Effect of imputing stage on net survival*

Imputation of missing data on stage had little impact on survival for women with early-stage breast cancer. For those with TNM stage III-IV, survival was generally lower when imputed data were included. This was especially true in the UK (five English registries, Northern Ireland, Wales), which had the lowest stage-specific survival for all except TNM stage I disease. For women with TNM stage IV disease, one-year survival in the UK ranged from 50.3-51.2% in the fifteen imputed data sets, whereas the range was 59.4-69.1% in the other five countries (Figure 3). In the analyses including imputed SEER SS2000 data, one-year survival for women with ‘distant’ disease in the UK (Northern Ireland, Wales) was 47.0-55.9%, compared to 61.8-70.5% elsewhere.

*Insert Figure 3*

Women in the UK with SEER SS2000 ‘distant’ disease had comparatively high three-year survival (54.8%), but this was not evident after inclusion of imputed stage data (35.6-43.0%) (see additional file 2).

## **Discussion**

Age-standardised net survival for women with breast cancer varied from 94.3% in the UK to 98.4% in Sweden one year after diagnosis, and from 87.4% (UK) to 94.1% (Sweden) at three years. International differences were widest for women who were older, or with more advanced disease or with missing stage at diagnosis. The distribution of stage at diagnosis was least favourable in Denmark, where survival was relatively low, but stage-specific survival was average. In contrast, the stage distribution in the UK was similar to that in countries with higher overall survival, but survival was lower within each category of stage. Differences in stage at diagnosis explain some of

the international variation in survival, but other factors, such as treatment, co-morbidity and staging procedures must also be important (Coleman, 1999).

We analysed routinely collected data from population-based cancer registries, handled under a single protocol, to produce a rigorously comparable, up-to-date, international study of survival by stage at diagnosis and to include over 250,000 patients. We have described a new method to harmonise the different clinical staging systems, and the problems of coding and classification that remain (Walters *et al.*, 2013). Such problems include the high proportion of patients for whom data on stage are not available, and the lack of consistency in how stage data are recorded and processed by cancer registries. For the International Association of Cancer Registries (IACR), stage at diagnosis is a 'recommended' (not 'essential') variable, and IACR guidance on recording stage does not currently ensure standardisation of practice (Parkin, 2006;Jensen *et al.*, 1991).

Nonetheless, by consolidating the available stage data, we have produced a robust stage variable for a high proportion of patients. The stage distributions are generally consistent with previous national and age-specific estimates (Sant *et al.*, 2003;Allemani *et al.*, 2010;Wishart *et al.*, 2010), and they changed very little when stage was imputed where it was missing. The patterns of survival by stage, age and time since diagnosis are internally and clinically coherent.

Stage-specific survival was lower after imputation of missing stage, particularly for late-stage disease, and especially in the UK regions, where over 25% of patients had missing data on stage. Older women and those with poor prognosis were particularly likely to be in this category. The lack of change in the stage distribution after imputation, yet lower stage-specific survival, is at face value confusing. It arises because women with missing stage data were on average much older than women with known stage, and older patients generally have lower net survival, even within each stage category. Women with missing stage data may also have more co-morbidity or other adverse prognostic factors than women with known stage, contributing to lower survival within each stage. This was particularly true in the UK and Denmark, whereas in Norway and Sweden stage appeared to be missing more completely at random (MCAR), the prognosis for women with missing stage being closer to those with known stage leading to smaller changes in stage-specific survival following imputation (White *et al.*, 2011). A richer

dataset, with full data on treatment and co-morbidity, might have enabled more precise imputations of stage, because the main assumption behind imputation is that stage can be predicted from other variables in the dataset. Nonetheless, even when the number of covariables is limited, multiple imputation remains the least biased approach to handling missing data (Nur *et al.*, 2010).

National breast cancer screening programmes for women aged 50-69/70 years were being implemented in all of these countries except Denmark during 2000-7. Screening was initiated around 1990 (Dowling *et al.*, 2010), although the date by which national coverage was achieved varied, for example from 1997 in Sweden to 2005 in Norway (Autier *et al.*, 2011). Small differences existed in the timing and methods of screening, for example most countries employed an annual or biennial invitation, except the UK where women were invited every three years, and there was variation in the use of digital mammography and clinical breast examination (Dowling *et al.*, 2010). Overall however, by 2004-5 the uptake of screening was consistently 65-75% of eligible women in the UK, Norway, Sweden (Dowling *et al.*, 2010), New South Wales (Birch *et al.*, 2007), British Columbia and Manitoba (Public Health Agency of Canada, 2012). Among these jurisdictions we do not consider that small differences in the screening programmes explain differences in the stage distribution or in stage-specific survival. Instead we note the consistency with which women in the 'screened' age-group had more favourable stage distributions than younger and older women, and that the largest between-country differences in survival were found among the older, ineligible, women.

Denmark is the only country in this study that did not implement national breast cancer screening during 2000-7. Up to 2006, just 20% of the population was covered by screening (Jorgensen *et al.*, 2010). Screening is associated with an increase in the diagnosis of Stage I and II tumours (Jensena *et al.*, 2003;Jensen *et al.*, 2008), as well as the 'overdiagnosis' of indolent invasive cancers that might never have been diagnosed in the absence of screening (Marmot *et al.*, 2012;Kalager *et al.*, 2012;Hackshaw, 2012). It is likely that the slower implementation of screening in Denmark underlies the more advanced stage distribution in that country (which is evident despite restriction of the analyses to 2004-7) (Christensen *et al.*, 2004). It may also explain the lower survival of women with Stage I tumours compared to that group of women in other countries,

where more women with ‘overdiagnosed’ indolent invasive tumours may have been included.

It is possible that the overall relatively low net survival in Denmark arises in small part because of lead time bias in the other countries, wherein diagnosis is brought forward by screening, so that survival from the time of diagnosis is longer, regardless of whether screening actually extended life. However, this cannot fully explain low survival in Denmark, because survival in Denmark is relatively low even among non-screened age-groups.

It has been shown that lower survival in England than in Sweden and Norway arises mainly in the first few months after diagnosis (Møller *et al.*, 2010; Lambert *et al.*, 2011). Low survival in the first year may indicate delayed diagnosis, and it has led to promotion of “awareness of symptoms and early detection as the main strategy to improve breast cancer survival in the United Kingdom” (Møller *et al.*, 2010). Given the ecological studies cited above, we might expect later diagnosis to lead to a later stage distribution, but the stage distribution in the UK is actually fairly average among these countries, and it cannot fully explain the lower survival of UK breast cancer patients.

International differences in stage-specific survival may be explained by differences in treatment. Previous studies have identified differences between European countries in the proportion of women who receive ‘standard care’ for breast cancer (Allemani *et al.*, 2010), especially a lower proportion receiving surgery in the UK (Sant *et al.*, 2003). Given that the largest differences in survival were found for women with metastatic disease, we would expect this to be largely driven by differences in the use of adjuvant systemic therapies (Koscielny *et al.*, 2009). Further research is under way to determine whether differences in breast cancer treatment between these six countries in 2000-7 could help explain the inequalities in survival.

International differences in stage-specific survival may also reflect differences in the intensity and accuracy of staging. In the UK, it is recommended that asymptomatic women should not undergo staging investigations such as whole body bone and CT scans for metastatic disease (National Institute for Health and Clinical Excellence, 2012). If women with asymptomatic metastases are systematically diagnosed as having

non-metastatic disease, this could help explain our finding of lower survival than elsewhere among women with both stage III and IV tumours in the UK (stage migration) (Feinstein *et al.*, 1985). Previous studies have highlighted less aggressive staging in the UK than in other European countries (Sant *et al.*, 2003). To ensure that future studies can control correctly for variability in the intensity of staging investigations between countries, details of these procedures should be systematically captured by cancer registries.

The largest international differences in survival were found among older women or those who were not staged, who had particularly low survival in the UK and Denmark. Treatment recommendations are less well defined for older women, who are rarely included in clinical trials and who often have more complex co-morbidities (Bastiaannet *et al.*, 2010). Recommendations for treatment of unstaged women are also less consistent (Wishart *et al.*, 2010; Voogd and Coebergh, 2010). Women in the UK and Denmark may be staged less often than in other countries if they are particularly frail and could be considered liable to suffer from invasive staging investigations. Unstaged women may also have shorter survival because treatment guidelines are less clear. Some of these women may actually have been staged, but the clinical data not transmitted to the cancer registry. The channels for reporting clinical information on stage to cancer registries should be improved to enable better international comparisons of cancer survival.

## **Conclusions**

International variation in breast cancer survival is partly explained by stage at diagnosis. This was most clearly true in Denmark, where the stage distribution was most adverse and where overall survival was lower than in any other country except the UK. The national roll-out of mammographic screening in Denmark from 2007 will be expected to increase the proportion of women diagnosed at an early stage. In the UK, by contrast, the stage distribution was relatively favourable, but stage-specific survival was lower than in other countries. This suggests that the low survival in the UK must be explained by other factors, such as the intensity and accuracy of staging, and access to or the effectiveness of stage-specific treatment. Australia and Sweden had quite favourable stage distributions at diagnosis and relatively high survival at all stages of disease.



There is scope for other countries to learn from health policies and clinical practice in these countries. Women with early-stage disease in Canada and Norway had similar survival to that seen elsewhere, but those with late-stage disease had lower survival than in Australia and Sweden: the treatment of these women should be investigated, as should the relatively high proportion of women with TNM stage III disease in Canada.

The completeness and comparability of stage data routinely collected by population-based cancer registries needs considerable improvement to facilitate comparisons of survival by stage. Such data enable larger, more timely, more representative and more affordable comparisons of cancer survival than any other approach and they can be invaluable in monitoring the success of cancer control strategies. To this end, IACR should now identify stage as an 'essential' data item for collection by population-based cancer registries, and clinicians and registry staff should ensure that data on stage at diagnosis are complete, standardised and comparable between countries. Clinicians should be encouraged to conform to a single international staging system such as TNM. Meanwhile, the Union for International Cancer Control should ensure that the TNM system achieves a balance between meeting clinical demands for detail and retaining the simplicity required for surveillance of cancer survival worldwide.

### **Competing interests**

M. A. Richards is the National Cancer Director (England, funded by the Department of Health who also funded this study). All other authors declare that they have no competing interests.

### **Acknowledgements**

This work was supported by the Department of Health, England (London, UK); Cancer Research UK supports the CRUK Cancer Survival Group at LSHTM (C1336/A11700); and the Northern Ireland Public Health Agency funds the Northern Ireland Cancer Registry.

We thank the cancer registry staff in all jurisdictions, whose sustained efforts in data collection and quality control over many years have enabled this study of breast cancer survival and stage at diagnosis. The authors would like to thank Martine Bomb, Catherine Foot and Donia Sadik at Cancer Research UK for their logistical support.

## Reference List

Allemani C, Sant M, Weir HK, Richardson LC, Baili P, Storm H, Siesling S, Torrella-Ramos A, Voogd AC, Aareleid T, Ardanaz E, Berrino F, Bielska-Lasota M, Bolick S, Cirilli C, Colonna M, Contiero P, Cress R, Crocetti E, Fulton JP, Grosclaude P, Hakulinen T, Izarzugaza MI, Malmstrom P, Peignaux K, Primic-Zakelj M, Rachtan J, Diba CS, Sanchez MJ, Schymura MJ, Shen T, Traina A, Tryggvadottir L, Tumino R, Velten M, Vercelli M, Wolf HJ, Woronoff AS, Wu X, Coleman MP (2012) Breast cancer survival in the US and Europe: A CONCORD high-resolution study [Epub ahead of print]. *Int J Cancer*, doi:10.1002/ijc.27725

Allemani C, Storm H, Voogd AC, Holli K, Izarzugaza I, Torrella-Ramos A, Bielska-Lasota M, Aareleid T, Ardanaz E, Colonna M, Crocetti E, Danzon A, Federico M, Garau I, Grosclaude P, Hedelin G, Martinez-Garcia C, Peignaux K, Plesko I, Primic-Zakelj M, Rachtan J, Tagliabue G, Tumino R, Traina A, Tryggvadottir L, Vercelli M, Sant M (2010) Variation in 'standard care' for breast cancer across Europe: a EURO CARE-3 high resolution study. *Eur J Cancer* **46** (9): 1528-1536, doi:10.1016/j.ejca.2010.02.016

Autier P, Boniol M, Gavin A, Vatten LJ (2011) Breast cancer mortality in neighbouring European countries with different levels of screening but similar access to treatment: trend analysis of WHO mortality database. *BMJ* **343** d4411

Bastiaannet E, Liefers GJ, de Craen AJ, Kuppen PJ, van de Water W, Portielje JE, van der Geest LG, Janssen-Heijnen ML, Dekkers OM, van de Velde CJ, Westendorp RG (2010) Breast cancer in elderly compared to younger patients in the Netherlands: stage at diagnosis, treatment and survival in 127,805 unselected patients. *Breast Cancer Res Treat* **124** (3): 801-807, doi:10.1007/s10549-010-0898-8

Berrino F, De Angelis R, Sant M, Rosso S, Bielska-Lasota M, Coebergh JW, Santaquilani M (2007) Survival for eight major cancers and all cancers combined for European adults diagnosed in 1995-99: results of the EURO CARE-4 study. *Lancet Oncol* **8** (9): 773-783, doi:10.1016/S1470-2045(07)70245-0

Birch S, Haas M, Savage E, Van GK (2007) Targeting services to reduce social inequalities in utilisation: an analysis of breast cancer screening in New South Wales. *Aust New Zealand Health Policy* **4** 12, doi:10.1186/1743-8462-4-12

Christensen LH, Engholm G, Ceberg J, Hein S, Perfekt R, Tange UB, Andersson M, Mouridsen HT, Möller T, Storm HH (2004) Can the survival difference between breast cancer patients in Denmark and Sweden 1989 and 1994 be explained by patho-anatomical variables? A population-based study. *Eur J Cancer* **40** (8): 1233-1243, doi:10.1016/j.ejca.2004.01.005

Coleman MP (1999) Why the variation in breast cancer survival in Europe? *Breast Cancer Res* **1** (1): 22-26

Coleman MP, Forman D, Bryant H, Butler J, Rachet B, Maringe C, Nur U, Tracey E, Coory M, Hatcher J, McGahan CE, Turner D, Marrett L, Gjerstorff ML, Johannesen TB, Adolfsson J, Lambe M, Lawrence G, Meechan D, Morris EJ, Middleton R, Steward J, Richards MA, ICBP Module 1 Working Group (2011) Cancer survival in Australia, Canada, Denmark, Norway, Sweden, and the UK, 1995-2007 (the International Cancer Benchmarking Partnership): an analysis of population-based cancer registry data. *Lancet* **377** 127-138

- Coleman MP, Quaresma M, Berrino F, Lutz JM, De Angelis R, Capocaccia R, Baili P, Rachet B, Gatta G, Hakulinen T, Micheli A, Sant M, Weir HK, Elwood JM, Tsukuma H, Koifman S, GA ES, Francisci S, Santaquilani M, Verdecchia A, Storm HH, Young JL (2008) Cancer survival in five continents: a worldwide population-based study (CONCORD). *Lancet Oncol* **9** (8): 730-756, doi:10.1016/S1470-2045(08)70179-7
- Dowling EC, Klabunde C, Patnick J, Ballard-Barbash R (2010) Breast and cervical cancer screening programme implementation in 16 countries. *J Med Screen* **17** (3): 139-146, doi:10.1258/jms.2010.010033
- Durrleman S, Simon R (1989) Flexible regression models with cubic splines. *Stat Med* **8** (5): 551-561
- Feinstein AR, Sosin DM, Wells CK (1985) The Will Rogers phenomenon. Stage migration and new diagnostic techniques as a source of misleading statistics for survival in cancer. *N Engl J Med* **312** (25): 1604-1608, doi:10.1056/NEJM198506203122504
- Hackshaw A (2012) The benefits and harms of mammographic screening for breast cancer: building the evidence base using service screening programmes. *J Med Screen* **19 Suppl 1** 1-2, doi:19/suppl\_1/1 [pii];10.1258/jms.2012.012074 [doi]
- Jensen AR, Garne JP, Storm HH, Engholm G, Möller T, Overgaard J (2004) Does stage at diagnosis explain the difference in survival after breast cancer in Denmark and Sweden? *Acta Oncol* **43** (8): 719-726, doi:10.1080/02841860410002789
- Jensen AR, Madsen AH, Overgaard J (2008) Trends in breast cancer during three decades in Denmark: stage at diagnosis, surgical management and survival. *Acta Oncol* **47** (4): 537-544, doi:10.1080/02841860801982758
- Jensen OM, Parkin DM, MacLennan R, Muir CS, Skeet RG (1991) *Cancer registration: principles and methods (IARC Scientific Publications No. 95)*. International Agency for Research on Cancer: Lyon
- Jensena AR, Ewertz M, Cold S, Storm HH, Overgaard J (2003) Time trends and regional differences in registration, stage distribution, surgical management and survival of breast cancer in Denmark. *Eur J Cancer* **39** (12): 1783-1793
- Jorgensen KJ, Zahl PH, Gotzsche PC (2010) Breast cancer mortality in organised mammography screening in Denmark: comparative study. *BMJ* **340** c1241
- Kalager M, Adami HO, Bretthauer M, Tamimi RM (2012) Overdiagnosis of invasive breast cancer due to mammography screening: results from the Norwegian screening program. *Ann Intern Med* **156** (7): 491-499, doi:156/7/491 [pii];10.1059/0003-4819-156-7-201204030-00005 [doi]
- Koscielny S, Arriagada R, Adolfsson J, Fornander T, Bergh J (2009) Impact of tumour size on axillary involvement and distant dissemination in breast cancer. *Br J Cancer* **101** (6): 902-907, doi:10.1038/sj.bjc.6605221
- Lambert PC, Holmberg L, Sandin F, Bray F, Linklater KM, Purushotham A, Robinson D, Møller H (2011) Quantifying differences in breast cancer survival between England and Norway. *Cancer Epidemiol* **35** (6): 526-533, doi:10.1016/j.canep.2011.04.003

- Lambert PC, Royston P (2009) Further development of flexible parametric models for survival analysis. *The Stata Journal* **9** (2): 265-290
- Laurenti R, Coleman MP, Aylin P (2000) Accuracy of statements of the cause of death on death certificates and the international comparability of mortality statistics. In *Death certification and mortality statistics: an international perspective*, Coleman MP, Aylin P (eds) Office for National Statistics: London
- Marmot MG, Altman DG, Cameron DA, Dewar JA, Thompson SG, Wilcox M (2012) The benefits and harms of breast cancer screening: an independent review. *Lancet* **380** (9855): 1778-1786, doi:S0140-6736(12)61611-0 [pii];10.1016/S0140-6736(12)61611-0 [doi]
- Møller H, Sandin F, Bray F, Klint A, Linklater KM, Purushotham A, Robinson D, Holmberg L (2010) Breast cancer survival in England, Norway and Sweden: a population-based comparison. *Int J Cancer* **127** (11): 2630-2638, doi:10.1002/ijc.25264
- National Institute for Health and Clinical Excellence. Breast cancer quality standards. <http://www.nice.org.uk/guidance/qualitystandards/breastcancer/Staging.jsp>. Last accessed: 2-5-2012
- Nur U, Shack LG, Rachet B, Carpenter JR, Coleman MP (2010) Modelling relative survival in the presence of incomplete data: a tutorial. *Int J Epidemiol* **39** 118-128
- Parkin DM (2006) The evolution of the population-based cancer registry. *Nat Rev Cancer* **6** 603-612
- Pohar-Perme M, Stare J, Estève J (2012) On estimation in relative survival. *Biometrics* **68** (1): 113-120, doi:10.1111/j.1541-0420.2011.01640.x
- Public Health Agency of Canada. Organized Breast Cancer Screening Programs in Canada - Report on Program Performance in 2005 and 2006. <http://www.phac-aspc.gc.ca/cd-mc/publications/cancer/obcsp-podcs05/1-eng.php>. Last accessed: 4-12-2012
- Remontet L, Bossard N, Belot A, Estève J, FRANCIM (2007) An overall strategy based on regression models to estimate relative survival and models to estimate relative survival and model the effects of prognostic factors in cancer survival studies. *Stat Med* **26** 2214-2228
- Sankaranarayanan R, Swaminathan R, Brenner H, Chen K, Chia KS, Chen JG, Law SC, Ahn YO, Xiang YB, Yeole BB, Shin HR, Shanta V, Woo ZH, Martin N, Sumitsawan Y, Sriplung H, Barboza AO, Eser S, Nene BM, Suwanrungruang K, Jayalekshmi P, Dikshit R, Wabinga H, Esteban DB, Laudico A, Bhurgri Y, Bah E, Al-Hamdani N (2010) Cancer survival in Africa, Asia, and Central America: a population-based study. *Lancet Oncol* **11** (2): 165-173, doi:10.1016/S1470-2045(09)70335-3
- Sant M, Allemani C, Capocaccia R, Hakulinen T, Aareleid T, Coebergh JW, Coleman MP, Grosclaude P, Martinez C, Bell J, Youngson J, Berrino F (2003) Stage at diagnosis is a key explanation of differences in breast cancer survival across Europe. *Int J Cancer* **106** (3): 416-422, doi:10.1002/ijc.11226
- Sobin LH, Gospodarowicz M, Wittekind C (2009) *TNM classification of malignant tumours, 7th edition*. Union for International Cancer Control (UICC), Wiley-Blackwell: Oxford

Voogd AC, Coebergh JW (2010) Explaining variations in survival in breast cancer in the Eastern Region of England. *Ann Oncol* **21** (3): 669-670, doi:10.1093/annonc/mdp570

Walters S, Maringe C, Butler J, Brierley JD, Rachet B, Coleman MP (2013) Comparability of stage data in cancer registries in six countries: Lessons from the International Cancer Benchmarking Partnership. *Int J Cancer* **132** (3): 676-685, doi:10.1002/ijc.27651 [doi]

White IR, Royston P, Wood AM (2011) Multiple imputation using chained equations: Issues and guidance for practice. *Stat Med* **30** (4): 377-399, doi:10.1002/sim.4067

Wishart GC, Greenberg DC, Chou P, Brown CH, Duffy S, Purushotham AD (2010) Treatment and survival in breast cancer in the Eastern Region of England. *Ann Oncol* **21** (2): 291-296, doi:10.1093/annonc/mdp301

Woods LM, Rachet B, O'Connell D, Lawrence G, Tracey E, Willmore A, Coleman MP (2009) Large differences in patterns of breast cancer survival between Australia and England: a comparative study using cancer registry data. *Int J Cancer* **124** (10): 2391-2399, doi:10.1002/ijc.24233

Young JL, Roffers SD, Ries LAG, Fritz AG, Hurlbut AA (2001) *SEER Summary Staging Manual - 2000: Codes and Coding Instructions*. National Cancer Institute: Bethesda

Table 1. Number and mean age at diagnosis of breast cancer patients diagnosed in 2000-2007, country and stage at diagnosis (TNM and SEER Summary Stage 2000), before and after multiple imputation

	TNM stage					SEER Summary Stage 2000				
	Stage	Number <sup>6</sup>	Mean age	%		Stage	Number <sup>6</sup>	Mean age	%	
				Observed	After imputation				Observed	After imputation
<b>Australia<sup>1</sup></b>	<b>All patients</b>					<b>All patients</b>	32,329	60.7		
	<b>Missing stage</b>					<b>Missing stage</b>	2,569	67.7	7.9	
	<b>I</b>					<b>Localised</b>	16,739	61.0	56.2	55.9
	<b>II</b>					<b>Regional</b>	11,299	58.2	38.0	38.1
	<b>III</b>					<b>Distant</b>	1,722	63.4	5.8	6.0
	<b>IV</b>									
<b>Canada<sup>2</sup></b>	<b>All patients</b>	25,652	62.3			<b>All patients</b>	25,652	62.3		
	<b>Missing stage</b>	5,341	67.8	20.8		<b>Missing stage</b>	5,399	67.8	21.0	
	<b>I</b>	8,912	61.6	43.9	41.0	<b>Localised</b>	12,242	61.8	60.4	57.0
	<b>II</b>	7,924	60.2	39.0	38.1	<b>Regional</b>	6,952	58.8	34.3	35.6
	<b>III</b>	2,415	58.9	11.9	13.3	<b>Distant</b>	1,059	62.9	5.2	7.4
	<b>IV</b>	1,060	62.9	5.2	7.6					
<b>Denmark<sup>5</sup></b>	<b>All patients</b>	16,190	63.3			<b>All patients</b>	16,190	63.3		
	<b>Missing stage</b>	1,835	73.8	11.3		<b>Missing stage</b>	1,835	73.8	11.3	
	<b>I</b>	4,322	61.1	30.1	29.3	<b>Localised</b>	6,557	62.2	45.7	44.8
	<b>II</b>	6,849	61.9	47.7	47.2	<b>Regional</b>	6,810	60.8	47.4	47.7
	<b>III</b>	2,196	61.1	15.3	15.8	<b>Distant</b>	988	67.6	6.9	7.5
	<b>IV</b>	988	67.6	6.9	7.7					
<b>Norway</b>	<b>All patients</b>	21,964	62.4			<b>All patients</b>	21,964	62.4		
	<b>Missing stage</b>	2,873	71.2	13.1		<b>Missing stage</b>	2,862	71.2	13.0	
	<b>I</b>	8,495	60.8	44.5	43.4	<b>Localised</b>	10,638	61.3	55.7	54.7
	<b>II</b>	8,925	60.3	46.7	47.1	<b>Regional</b>	7,465	60.1	39.1	39.7
	<b>III</b>	673	66.3	3.5	3.8	<b>Distant</b>	999	66.7	5.2	5.7
	<b>IV</b>	998	66.7	5.2	5.7					
<b>Sweden<sup>3</sup></b>	<b>All patients</b>	20,659	62.7			<b>All patients</b>	20,659	62.7		
	<b>Missing stage</b>	3,484	65.1	16.9		<b>Missing stage</b>	3,484	65.1	16.9	
	<b>I</b>	7,758	61.1	45.2	45.2	<b>Localised</b>	12,003	62.0	69.9	69.9
	<b>II</b>	8,020	62.7	46.7	46.5	<b>Regional</b>	4,678	62.3	27.2	27.2
	<b>III</b>	903	64.7	5.3	5.3	<b>Distant</b>	494	66.6	2.9	2.9
	<b>IV</b>	494	66.6	2.9	3.0					
<b>UK<sup>4</sup></b>	<b>All patients</b>	140,568	63.0			<b>All patients</b>	26,011	63.3		
	<b>Missing stage</b>	35,517	67.7	25.3		<b>Missing stage</b>	9,163	68.6	35.2	
	<b>I</b>	44,135	60.6	42.0	40.0	<b>Localised</b>	10,176	60.8	60.4	56.8
	<b>II</b>	47,738	61.2	45.4	45.4	<b>Regional</b>	6,378	59.9	37.9	39.9
	<b>III</b>	8,663	63.3	8.2	9.2	<b>Distant</b>	294	66.0	1.7	3.3
	<b>IV</b>	4,515	67.6	4.3	5.4					

<sup>1</sup> Australia: New South Wales

<sup>2</sup> Canada: British Columbia and Manitoba

<sup>3</sup> Sweden: Uppsala-Örebro and Stockholm-Gotland health regions

<sup>4</sup> United Kingdom (TNM analysis): Northern Ireland, Wales and the Northern and Yorkshire Cancer Registry and Information Service, Eastern Cancer Registration and Information Centre, Oxford Cancer Intelligence Unit, West Midlands Cancer Intelligence Unit in England; United Kingdom (SEER analysis): Northern Ireland and

<sup>5</sup> In Denmark we analysed women diagnosed during 2004-7

<sup>6</sup> Number of patients before imputation

**Table 2. All-ages, age-specific and age-standardised one-year net survival (%) with 95% confidence intervals (CI), by stage at diagnosis and country for women diagnosed with breast cancer during 2000-2007**

TNM stage	NS (%)	Australia <sup>1</sup>			Canada <sup>2</sup>			Denmark <sup>5</sup>			Norway			Sweden <sup>3</sup>			UK <sup>4</sup>		
		95% CI	NS (%)	95% CI	NS (%)	95% CI	NS (%)	95% CI	NS (%)	95% CI	NS (%)	95% CI	NS (%)	95% CI	NS (%)	95% CI			
All patients	All ages		96.9	96.6	97.1	95.6	95.3	96.0	96.5	96.2	96.8	98.4	98.2	98.7	94.2	94.1	94.3		
	Age-standardised		96.8	96.6	97.0	95.6	95.4	95.9	96.5	96.3	96.6	98.4	98.2	98.5	94.3	94.2	94.4		
	15-49		98.5	98.3	98.7	98.6	98.3	98.8	98.6	98.5	98.8	99.3	99.2	99.5	98.0	97.8	98.1		
	50-69		97.9	97.8	98.1	97.2	96.9	97.5	98.1	98.0	98.3	99.0	98.9	99.2	96.9	96.8	97.0		
	70-99		94.2	93.6	94.8	91.4	90.5	92.3	92.2	91.5	93.0	96.9	96.3	97.4	87.9	87.6	88.2		
Stage I	All ages		100.0	100.0	100.0	100.0	99.9	100.0	100.0	100.0	100.0	100.0	100.0	100.0	100.0	100.0	100.0		
	Age-standardised		100.0	100.0	100.0	100.0	99.9	100.0	100.0	100.0	100.0	100.0	100.0	100.0	100.0	100.0	100.0		
	15-49		100.0	99.9	100.0	99.9	99.7	100.0	100.0	99.9	100.0	100.0	99.9	100.0	100.0	99.9	100.0		
	50-69		100.0	100.0	100.0	100.0	100.0	100.0	100.0	100.0	100.0	100.0	100.0	100.0	100.0	100.0	100.0		
	70-99		100.0	100.0	100.0	100.0	100.0	100.0	100.0	100.0	100.0	100.0	100.0	100.0	100.0	100.0	100.0		
Stage II	All ages		99.7	NA	NA	99.7	99.6	99.9	99.1	98.9	99.3	99.4	99.3	99.6	99.2	99.1	99.3		
	Age-standardised		99.7	99.7	99.8	99.7	99.6	99.8	99.1	99.0	99.2	99.4	99.3	99.5	99.2	99.2	99.3		
	15-49		99.7	99.6	99.8	99.7	99.6	99.9	99.2	99.0	99.4	99.5	99.4	99.7	99.2	99.1	99.3		
	50-69		99.7	99.6	99.8	99.8	99.7	99.9	99.3	99.1	99.4	99.5	99.3	99.6	99.3	99.2	99.4		
	70-99		99.8	99.7	99.9	99.6	99.3	99.9	98.6	98.2	99.0	99.3	99.0	99.5	99.1	99.0	99.3		
Stage III	All ages		96.5	95.8	97.3	96.6	95.7	97.5	94.0	92.2	95.8	94.1	92.4	95.7	90.6	90.0	91.2		
	Age-standardised		96.0	95.5	96.4	96.2	95.7	96.6	95.0	94.3	95.7	94.7	94.0	95.4	90.9	90.5	91.4		
	15-49		98.0	97.5	98.5	98.1	97.6	98.7	97.5	96.7	98.4	97.4	96.5	98.2	95.5	94.8	96.2		
	50-69		97.4	96.8	98.0	97.4	96.7	98.1	96.7	95.6	97.7	96.6	95.6	97.6	93.9	93.3	94.5		
	70-99		92.9	91.3	94.6	93.6	91.9	95.3	90.6	87.8	93.4	90.3	87.6	93.1	84.2	82.9	85.4		
Stage IV	All ages		69.0	66.4	71.6	63.8	60.8	66.8	61.6	58.7	64.4	66.9	62.9	70.8	52.3	50.9	53.7		
	Age-standardised		66.7	64.8	68.6	64.2	62.2	66.2	61.7	59.8	63.6	66.9	64.3	69.5	53.0	52.0	54.0		
	15-49		82.7	79.7	85.7	82.2	77.5	86.9	71.4	66.9	75.9	85.7	81.4	90.1	68.3	65.5	71.1		
	50-69		70.4	67.3	73.5	69.9	66.4	73.5	68.4	65.1	71.8	69.1	64.3	74.0	60.0	58.2	61.9		
	70-99		59.1	54.7	63.6	53.5	49.2	57.9	52.5	48.4	56.6	58.5	52.7	64.4	42.2	40.3	44.1		
Missing stage	All ages		91.7	90.9	92.5	87.2	85.4	89.0	93.1	91.9	94.2	97.7	97.0	98.4	87.3	86.9	87.7		
	Age-standardised		91.6	91.0	92.2	88.5	87.4	89.6	94.0	93.3	94.7	96.8	96.2	97.5	87.3	87.1	87.6		
	15-49		97.6	97.1	98.1	96.8	95.2	98.4	98.7	98.2	99.2	99.3	98.9	99.7	96.4	96.0	96.7		
	50-69		95.3	94.6	95.9	89.5	87.4	91.6	97.1	96.4	97.8	99.1	98.8	99.4	93.2	92.9	93.6		
	70-99		87.2	85.8	88.6	84.9	82.4	87.4	89.5	87.7	91.3	94.4	92.6	96.1	79.9	79.2	80.5		
<b>SEER Summary Stage 2000</b>																			
All patients	All ages	97.1	96.9	97.3	96.9	96.6	97.1	95.6	95.2	96.0	96.5	96.2	96.8	98.4	98.2	98.7	92.9	92.6	93.2
	Age-standardised	96.9	96.7	97.0	96.9	96.7	97.1	95.7	95.5	96.0	96.6	96.4	96.8	98.4	98.3	98.6	93.3	93.1	93.5
	15-49	98.6	98.5	98.8	98.5	98.3	98.7	98.6	98.3	98.8	98.6	98.5	98.8	99.4	99.2	99.5	97.6	97.3	97.8
	50-69	98.1	98.0	98.3	97.9	97.7	98.1	97.1	96.8	97.4	98.1	97.9	98.3	99.0	98.8	99.2	96.1	95.9	96.4
	70-99	93.8	93.3	94.4	94.2	93.6	94.8	91.4	90.5	92.3	92.2	91.5	93.0	96.9	96.3	97.4	85.7	84.9	86.4
Localised	All ages	100.0	99.9	100.0	100.0	100.0	100.0	99.9	100.0	99.9	NA	NA	99.9	99.9	100.0	99.9	99.9	100.0	
	Age-standardised	99.9	99.9	100.0	100.0	100.0	100.0	99.9	100.0	99.9	99.9	100.0	99.9	99.9	100.0	99.9	99.9	100.0	
	15-49	99.9	99.8	100.0	100.0	99.9	100.0	99.9	99.8	100.0	99.9	99.9	100.0	99.9	99.8	100.0	99.9	99.8	100.0
	50-69	99.9	99.9	100.0	100.0	100.0	100.0	99.9	99.9	100.0	100.0	99.9	99.9	100.0	99.9	99.9	99.9	99.9	100.0
	70-99	99.9	99.9	100.0	100.0	100.0	100.0	100.0	100.0	100.0	99.9	99.9	100.0	99.9	99.9	100.0	100.0	100.0	100.0
Regional	All ages	98.6	98.4	98.9	98.8	98.5	99.1	98.7	98.2	99.1	97.9	97.5	98.3	98.0	97.5	98.5	97.7	97.3	98.1
	Age-standardised	98.6	98.4	98.7	98.8	98.6	99.0	98.6	98.4	98.9	98.0	97.8	98.3	98.3	98.1	98.6	97.7	97.4	97.9
	15-49	99.0	98.8	99.3	99.2	99.0	99.4	99.2	98.9	99.5	99.0	98.7	99.3	99.2	98.9	99.4	98.6	98.2	98.9
	50-69	99.0	98.8	99.2	99.2	99.0	99.4	99.0	98.7	99.3	98.8	98.5	99.1	98.9	98.6	99.2	98.2	97.8	98.5
	70-99	97.3	96.5	98.0	97.6	96.8	98.4	97.4	96.4	98.4	95.1	94.0	96.3	96.0	94.8	97.1	95.9	95.0	96.9
Distant	All ages	71.6	69.7	73.6	68.8	66.2	71.4	63.7	60.7	66.7	61.2	58.4	64.1	66.7	62.7	70.6	69.3	64.3	74.3
	Age-standardised	70.1	68.7	71.5	67.6	65.7	69.4	65.5	63.5	67.5	62.4	60.5	64.3	67.8	65.3	70.4	69.4	65.8	72.9
	15-49	87.2	84.9	89.6	82.4	79.2	85.5	82.0	77.3	86.8	70.8	66.1	75.5	85.5	81.0	90.0	81.9	73.6	90.2
	50-69	78.2	75.9	80.5	70.0	66.9	73.1	69.7	66.2	73.3	67.8	64.4	71.2	68.6	63.7	73.5	76.5	71.0	82.0
	70-99	54.4	50.8	57.9	59.3	54.8	63.8	53.6	49.2	57.9	52.5	48.3	56.6	58.6	52.8	64.5	56.5	48.1	64.8
Missing stage	All ages	90.8	89.7	92.0	91.6	90.8	92.4	87.2	85.4	89.0	92.8	91.7	93.9	97.6	96.9	98.3	82.8	82.0	83.6
	Age-standardised	90.8	89.9	91.6	91.3	90.7	92.0	88.3	87.2	89.5	93.6	92.9	94.4	96.7	96.0	97.4	82.9	82.3	83.5
	15-49	96.6	95.7	97.5	97.4	96.8	98.0	96.8	95.1	98.5	98.5	97.9	99.1	99.2	98.8	99.7	94.1	93.2	95.0
	50-69	94.7	93.7	95.7	95.0	94.3	95.8	89.2	87.1	91.4	96.9	96.2	97.7	99.1	98.7	99.4	89.1	88.3	89.9
	70-99	86.0	83.9	88.0	87.2	85.8	88.6	85.1	82.6	87.5	89.3	87.4	91.1	94.3	92.5	96.1	75.0	73.7	76.4

<sup>1</sup> Australia: New South Wales

<sup>2</sup> Canada: British Columbia and Manitoba

<sup>3</sup> Sweden: Uppsala-Örebro and Stockholm-Gotland health regions

<sup>4</sup> United Kingdom (TNM analysis): Northern Ireland, Wales and the Northern and Yorkshire Cancer Registry and Information Service, Eastern Cancer Registration and Information Centre, Oxford Cancer Intelligence Unit, West Midlands Cancer Intelligence Unit in England; United Kingdom (SEER analysis): Northern Ireland and Wales

<sup>5</sup> In Denmark we analysed women diagnosed during 2004-7

NA: not available



**Table 3. All-ages, age-specific and age-standardised three-year net survival (%) with 95% confidence intervals (CI), by stage at diagnosis and country for women diagnosed with breast cancer during 2000-2007**

TNM stage	NS (%)	Australia <sup>1</sup>			Canada <sup>2</sup>			Denmark <sup>5</sup>			Norway			Sweden <sup>3</sup>			UK <sup>4</sup>		
		95% CI	NS (%)	95% CI	NS (%)	95% CI	NS (%)	95% CI	NS (%)	95% CI	NS (%)	95% CI	NS (%)	95% CI	NS (%)	95% CI			
All patients	All ages		92.4	92.0	92.9	89.0	88.2	89.8	90.6	90.1	91.1	94.3	93.8	94.8	87.3	87.1	87.5		
	Age-standardised		92.4	92.0	92.7	89.0	88.4	89.6	90.5	90.1	90.9	94.1	93.8	94.5	87.4	87.3	87.6		
	15-49		93.4	92.8	94.0	93.1	92.1	94.2	92.8	92.1	93.5	95.5	94.9	96.1	91.1	90.8	91.4		
	50-69		94.1	93.7	94.6	91.5	90.8	92.3	93.8	93.4	94.2	95.7	95.3	96.1	91.6	91.4	91.8		
	70-99		89.2	88.2	90.3	82.5	80.7	84.4	83.5	82.1	84.8	90.9	89.7	92.2	78.6	78.1	79.1		
Stage I	All ages		99.7	99.5	99.8	99.4	98.9	99.8	99.5	99.3	99.8	99.3	99.0	99.6	99.3	99.2	99.4		
	Age-standardised		99.7	99.6	99.7	99.4	99.1	99.6	99.5	99.4	99.7	99.3	99.1	99.4	99.3	99.2	99.4		
	15-49		99.3	98.9	99.7	98.6	97.6	99.7	99.0	98.6	99.5	98.5	97.9	99.1	98.5	98.2	98.8		
	50-69		99.7	99.5	99.9	99.4	99.0	99.9	99.6	99.3	99.8	99.4	99.1	99.6	99.4	99.2	99.5		
	70-99		99.9	99.8	100.0	99.8	99.5	100.0	99.8	99.7	99.9	99.7	99.6	99.9	99.7	99.6	99.9		
Stage II	All ages		96.4	NA	NA	95.5	94.4	96.6	91.5	90.7	92.3	94.1	93.3	94.8	92.4	92.1	92.8		
	Age-standardised		96.4	96.0	96.8	95.3	94.4	96.2	91.4	90.8	92.0	94.1	93.6	94.6	92.4	92.2	92.7		
	15-49		96.0	95.2	96.7	95.5	94.1	96.9	92.7	91.8	93.7	94.9	94.0	95.8	92.4	92.0	92.9		
	50-69		96.2	95.5	96.9	96.8	95.8	97.7	93.4	92.6	94.1	94.7	94.0	95.5	93.1	92.8	93.5		
	70-99		97.2	95.8	98.7	93.2	90.0	96.3	87.1	84.8	89.3	92.5	90.8	94.2	91.2	90.4	92.1		
Stage III	All ages		83.1	81.2	84.9	82.7	80.2	85.1	79.2	75.6	82.9	76.2	72.8	79.7	70.2	69.0	71.4		
	Age-standardised		82.0	81.1	82.9	81.9	80.7	83.0	80.7	79.2	82.2	77.3	75.8	78.8	70.7	69.9	71.5		
	15-49		85.8	84.1	87.5	85.7	83.5	87.9	84.6	81.6	87.6	81.7	78.8	84.7	76.5	74.8	78.1		
	50-69		84.9	83.2	86.6	84.4	82.1	86.7	83.4	80.3	86.5	80.7	77.8	83.7	74.6	73.3	76.0		
	70-99		76.2	73.4	79.0	76.5	73.1	79.9	73.8	69.2	78.5	69.7	65.3	74.1	61.9	59.9	63.9		
Stage IV	All ages		39.9	36.9	42.8	35.6	31.7	39.5	31.6	28.7	34.5	41.8	37.3	46.2	27.4	26.1	28.8		
	Age-standardised		37.8	35.6	40.1	36.1	33.4	38.8	31.6	29.6	33.7	41.8	38.6	45.0	27.9	26.9	28.9		
	15-49		55.4	49.7	61.0	54.3	44.4	64.1	34.9	29.0	40.8	64.8	56.1	73.5	36.2	33.1	39.4		
	50-69		39.6	35.8	43.4	40.4	35.4	45.3	37.4	33.5	41.4	41.6	35.7	47.5	33.1	31.2	35.0		
	70-99		31.5	26.6	36.3	26.5	21.6	31.5	25.5	21.5	29.5	34.2	27.5	40.9	20.8	19.0	22.6		
Missing stage	All ages		85.9	84.7	87.1	74.5	71.2	77.9	85.6	83.7	87.6	94.3	93.1	95.5	77.0	76.5	77.6		
	Age-standardised		85.8	84.9	86.7	76.2	74.1	78.4	87.3	86.1	88.5	92.3	91.0	93.7	77.1	76.7	77.5		
	15-49		93.0	91.6	94.4	88.7	83.0	94.4	95.0	93.1	96.8	96.8	95.4	98.3	88.0	87.2	88.7		
	50-69		90.7	89.6	91.8	76.4	72.2	80.6	92.9	91.5	94.4	97.5	96.8	98.2	85.7	85.2	86.3		
	70-99		80.1	78.1	82.1	71.9	67.4	76.3	79.5	76.3	82.7	87.2	83.8	90.6	66.9	66.0	67.9		
<b>SEER Summary Stage 2000</b>																			
All patients	All ages	92.5	92.2	92.9	92.4	92.0	92.8	89.0	88.3	89.8	90.6	90.0	91.1	94.3	93.8	94.8	86.1	85.6	86.7
	Age-standardised	92.2	91.9	92.5	92.5	92.1	92.8	89.2	88.7	89.8	90.7	90.3	91.1	94.2	93.9	94.6	86.6	86.3	87.0
	15-49	93.7	93.2	94.2	93.4	92.9	94.0	93.2	92.1	94.2	92.9	92.2	93.6	95.5	94.9	96.1	90.6	89.9	91.3
	50-69	94.4	94.1	94.8	94.1	93.7	94.5	91.5	90.8	92.3	93.7	93.3	94.2	95.7	95.3	96.1	90.6	90.1	91.1
	70-99	88.0	87.0	89.0	89.2	88.2	90.3	82.6	80.8	84.4	83.5	82.1	84.9	90.9	89.7	92.2	77.2	76.0	78.4
Localised	All ages	98.8	98.3	99.1	99.4	99.1	99.6	98.9	98.4	99.5	98.7	NA	NA	98.3	97.9	98.7	98.5	98.2	98.9
	Age-standardised	98.7	98.5	99.0	99.3	99.2	99.5	98.9	98.6	99.2	98.7	98.4	99.0	98.3	98.0	98.5	98.6	98.3	98.8
	15-49	98.2	97.7	98.6	98.7	98.2	99.1	98.4	97.4	99.4	98.3	97.7	98.9	97.7	97.2	98.3	96.9	96.2	97.7
	50-69	98.9	98.6	99.2	99.3	99.0	99.6	98.6	97.8	99.5	99.0	98.7	99.4	98.2	97.8	98.6	98.5	98.1	99.0
	70-99	98.8	97.5	100.0	100.0	99.9	100.0	99.8	99.4	100.0	98.3	96.8	99.7	98.8	97.8	99.7	99.8	99.3	100.3
Regional	All ages	91.6	90.9	92.3	91.2	90.3	92.1	91.2	90.0	92.4	88.6	87.7	89.6	88.0	86.8	89.3	87.2	86.1	88.2
	Age-standardised	91.4	90.9	91.9	91.1	90.5	91.8	91.1	90.3	92.0	89.0	88.3	89.6	89.0	88.2	89.8	87.2	86.5	88.0
	15-49	92.2	91.3	93.0	91.8	90.7	92.9	92.5	91.0	94.1	91.7	90.6	92.9	92.0	90.5	93.5	89.3	88.0	90.7
	50-69	92.9	92.2	93.6	92.9	92.0	93.8	92.4	91.3	93.6	91.7	90.8	92.6	91.2	90.1	92.4	88.5	87.4	89.6
	70-99	87.8	85.9	89.7	87.0	84.5	89.5	87.1	83.9	90.4	79.8	77.1	82.4	80.5	77.6	83.4	82.5	79.9	85.0
Distant	All ages	53.7	51.4	56.0	39.7	36.8	42.7	35.3	31.5	39.2	31.4	28.6	34.3	41.7	37.2	46.1	54.8	49.1	60.6
	Age-standardised	52.0	50.3	53.6	38.6	36.4	40.8	37.2	34.4	39.9	32.3	30.2	34.3	42.9	39.7	46.1	54.8	50.3	59.2
	15-49	71.3	67.2	75.3	55.2	49.5	60.9	54.2	44.4	64.1	34.9	29.0	40.8	64.9	56.2	73.5	65.8	52.5	79.2
	50-69	60.8	57.9	63.8	39.8	36.0	43.6	40.8	35.8	45.7	37.8	33.8	41.8	41.9	36.0	47.8	62.5	55.6	69.4
	70-99	34.5	30.8	38.3	30.8	26.0	35.6	25.6	20.7	30.4	24.9	21.0	28.8	33.6	27.0	40.3	41.9	32.6	51.2
Missing stage	All ages	80.6	78.7	82.5	85.6	84.4	86.7	74.3	71.0	77.6	85.2	83.3	87.2	94.1	92.9	95.4	71.2	70.0	72.3
	Age-standardised	80.6	79.1	82.0	85.2	84.2	86.1	75.9	73.7	78.1	86.7	85.4	88.0	92.1	90.7	93.5	71.3	70.4	72.1
	15-49	88.1	85.6	90.7	92.9	91.5	94.3	89.5	84.0	95.0	94.8	92.9	96.7	96.9	95.4	98.4	83.8	82.1	85.5
	50-69	87.3	85.5	89.2	90.5	89.3	91.6	76.3	72.1	80.6	92.7	91.2	94.2	97.4	96.7	98.1	79.6	78.4	80.9
	70-99	73.0	69.6	76.4	79.6	77.5	81.7	71.5	67.0	76.0	79.0	75.8	82.2	86.9	83.5	90.4	61.5	59.7	63.3

<sup>1</sup> Australia: New South Wales

<sup>2</sup> Canada: British Columbia and Manitoba

<sup>3</sup> Sweden: Uppsala-Örebro and Stockholm-Gotland health regions

<sup>4</sup> United Kingdom (TNM analysis): Northern Ireland, Wales and the Northern and Yorkshire Cancer Registry and Information Service, Eastern Cancer Registration and Information Centre, Oxford Cancer Intelligence Unit, West Midlands Cancer Intelligence Unit in England; United Kingdom (SEER analysis): Northern Ireland and Wales

<sup>5</sup> In Denmark we analysed women diagnosed during 2004-7

NA: not available

## Figure titles and legends

**Figure 1.** Proportions of breast cancer patients with missing stage (upper figure) and cumulative stage distribution among staged patients (lower figure)

Results presented by age at diagnosis and country: TNM (left) and SEER Summary Stage 2000 (right)

### Notes

Denmark and Norway: national data; Australia: New South Wales; Canada: British Columbia and Manitoba; Sweden: Uppsala-Örebro and Stockholm-Gotland health regions; UK (TNM analysis): Northern Ireland, Wales and the Northern and Yorkshire Cancer Registry and Information Service, Eastern Cancer Registration and Information Centre, Oxford Cancer Intelligence Unit, West Midlands Cancer Intelligence Unit in England; UK (SEER SS2000 analysis): Northern Ireland and Wales. In Denmark, we analysed women diagnosed during 2004-7

**Figure 2.** Age-standardised excess hazard (per 1,000 person-years, log scale) from breast cancer

Results presented by TNM or SEER Summary Stage 2000 and time since diagnosis

### Notes

1. Denmark and Norway: national data; Australia: New South Wales; Canada: British Columbia and Manitoba; Sweden: Uppsala-Örebro and Stockholm-Gotland health regions; UK (TNM analysis): Northern Ireland, Wales and the Northern and Yorkshire Cancer Registry and Information Service, Eastern Cancer Registration and Information Centre, Oxford Cancer Intelligence Unit, West Midlands Cancer Intelligence Unit in England; UK (SEER SS2000 analysis): Northern Ireland and Wales. In Denmark, we analysed women diagnosed during 2004-7

2. Bubbles are scaled to represent the stage distribution at diagnosis

**Figure 3.** Age-standardised one-year net survival for women diagnosed with breast cancer during 2000-7

Results presented by stage at diagnosis and country, using known stage and imputed stage: TNM (upper figure) and SEER Summary Stage 2000 (lower figure)

X survival estimate derived from women with known stage

I range of survival estimates derived for all women after imputation of stage where it was missing (see text)

### Notes:

Denmark and Norway: national data; Australia: New South Wales; Canada: British Columbia and Manitoba; Sweden: Uppsala-Örebro and Stockholm-Gotland health regions; UK (TNM analysis): Northern Ireland, Wales and the Northern and Yorkshire Cancer Registry and Information Service, Eastern Cancer Registration and Information Centre, Oxford Cancer Intelligence Unit, West Midlands Cancer Intelligence Unit in England; UK (SEER SS2000 analysis): Northern Ireland and Wales. In Denmark, we analysed women diagnosed during 2004-7

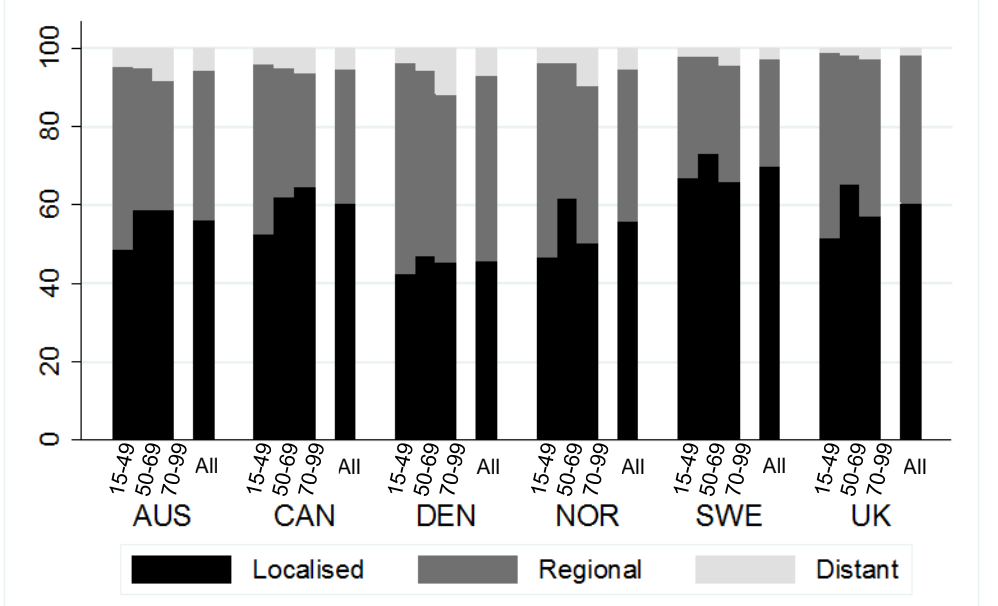
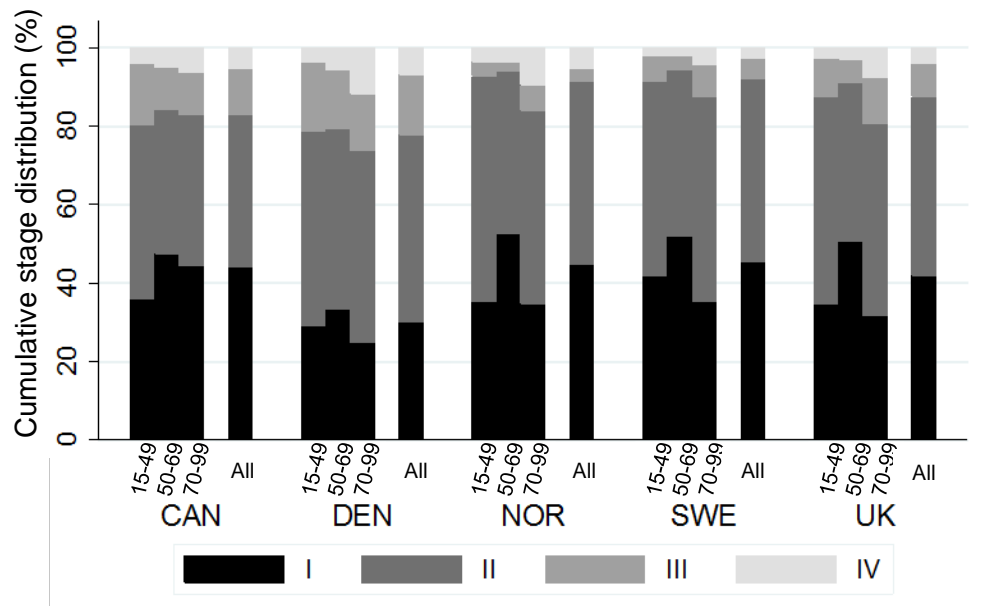
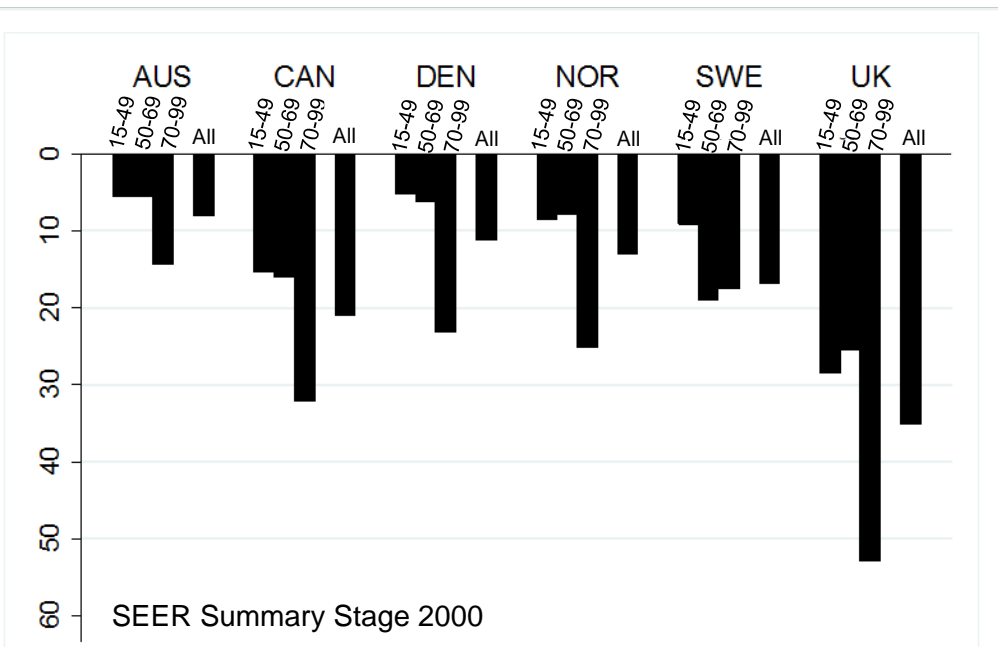
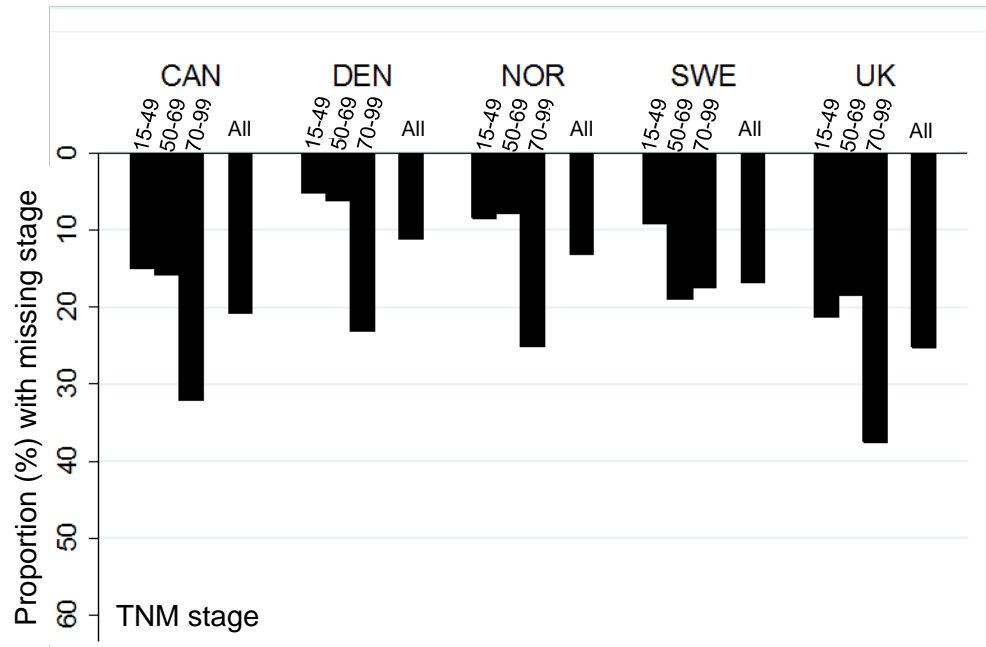


Figure 1

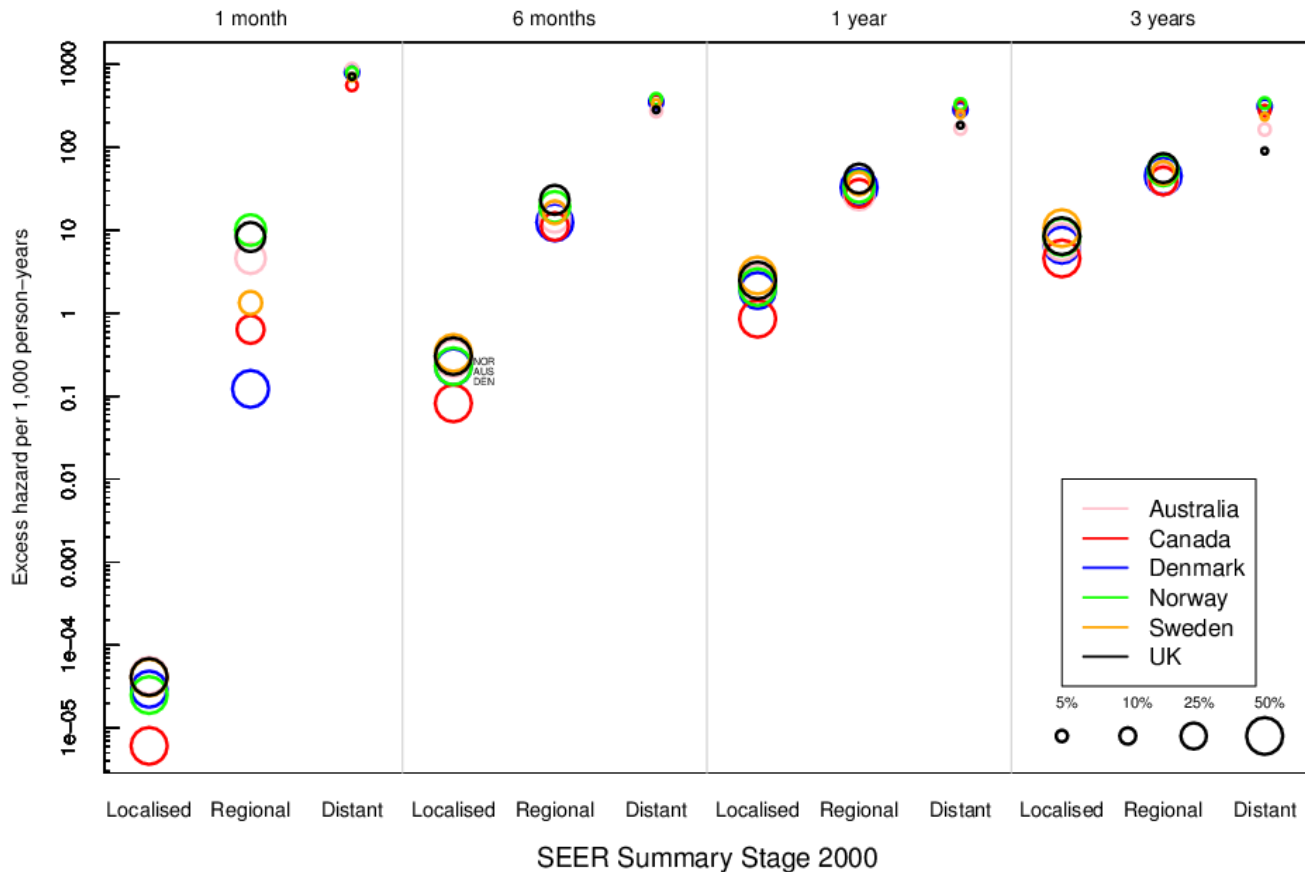
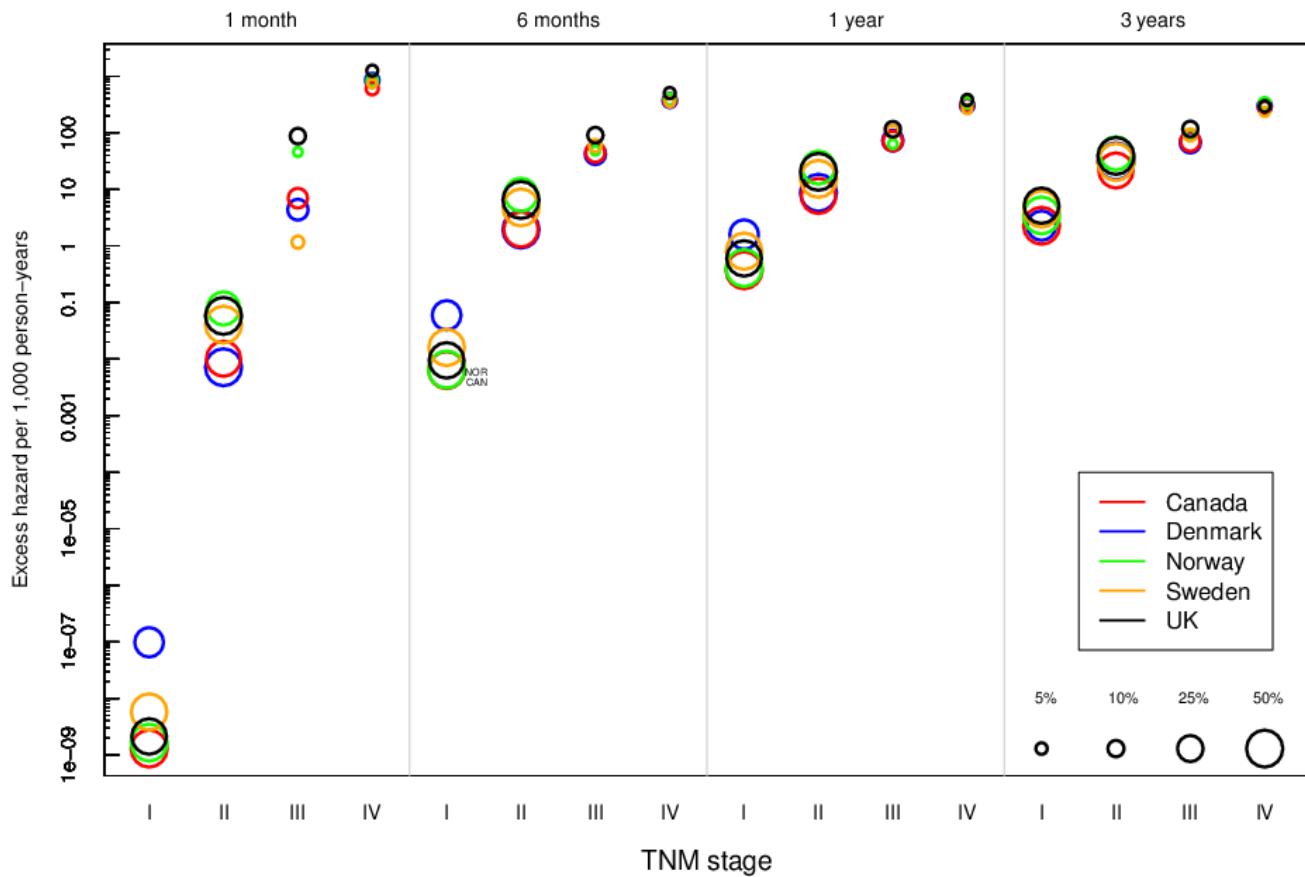
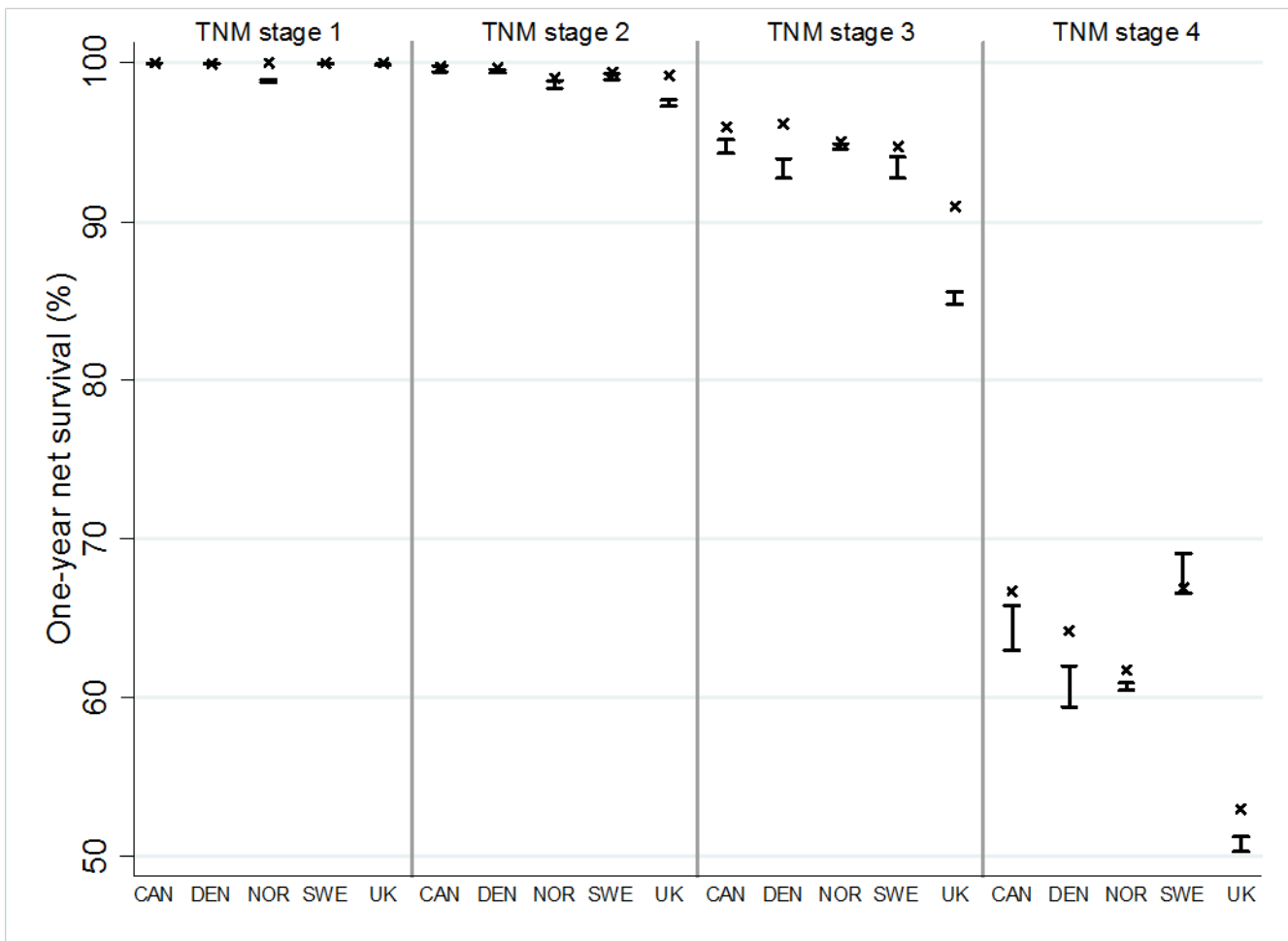


Figure 2

### TNM stage



### SEER Summary Stage 2000

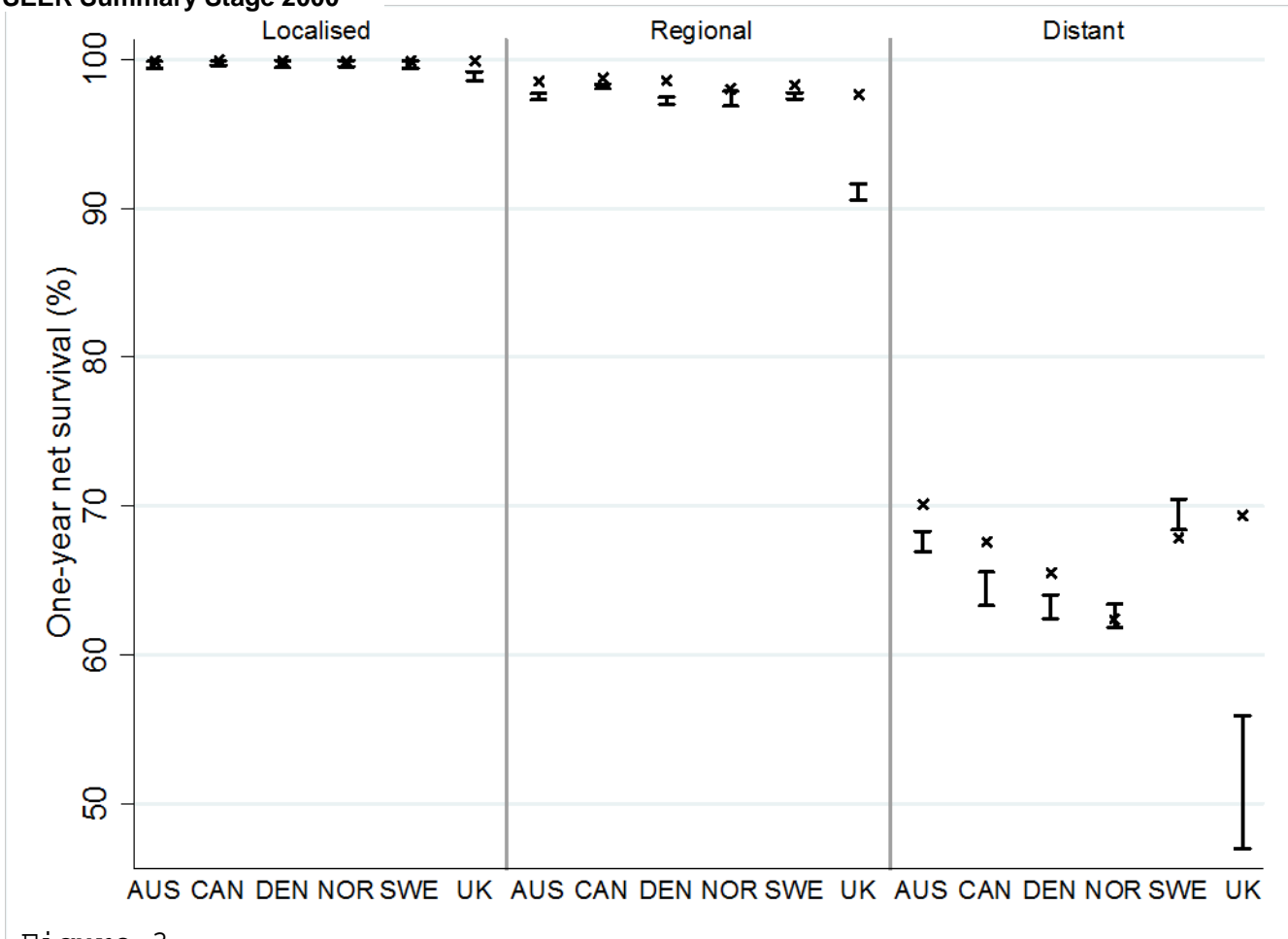


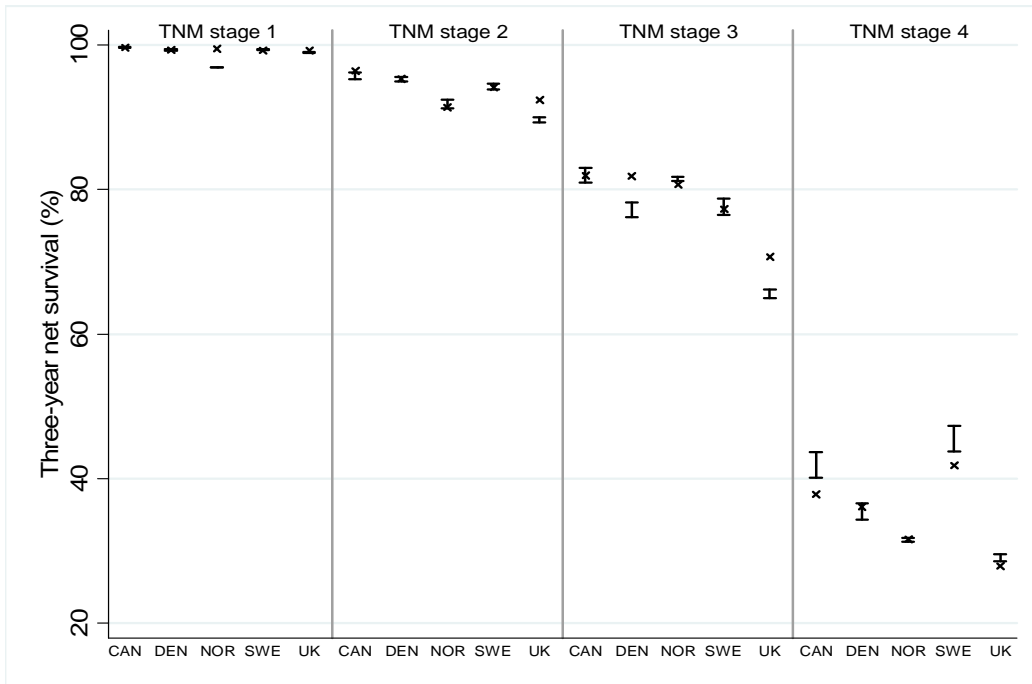
Figure 3

**Additional file 1. Stage-specific sets of weights used for age standardisation of breast cancer estimates**

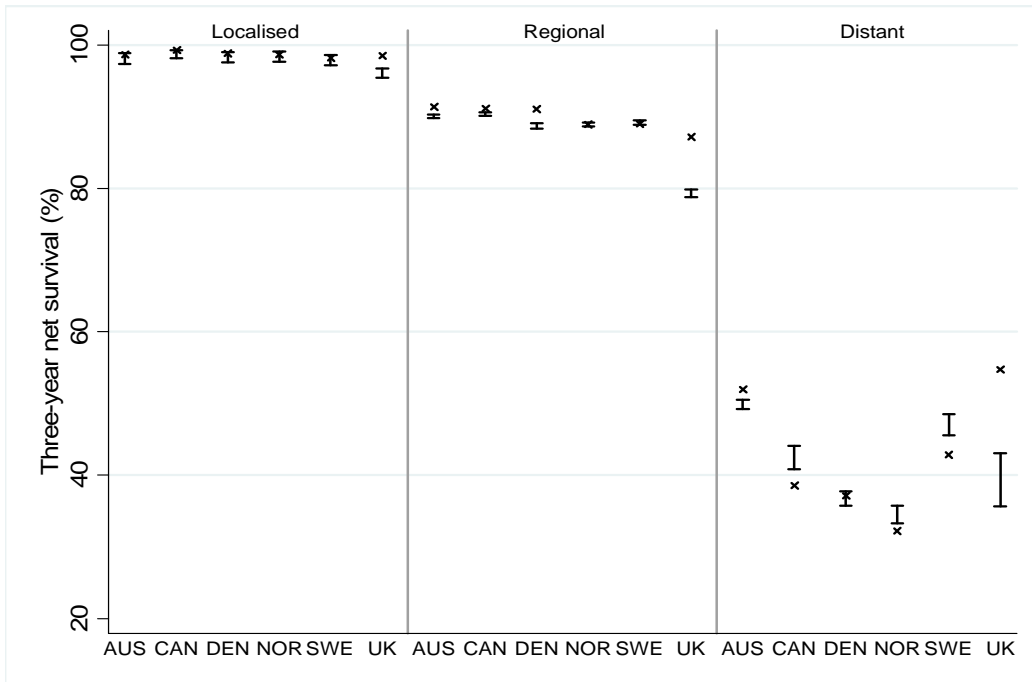
TNM stage			SEER Summary Stage 2000		
	Age category	Weights		Age category	Weights
All patients	15-44	0.11	All patients	15-44	0.11
	45-54	0.21		45-54	0.22
	55-64	0.26		55-64	0.27
	65-74	0.20		65-74	0.20
	75-84	0.16		75-84	0.15
	85-99	0.07		85-99	0.06
TNM stage I	15-44	0.09	Localised	15-44	0.10
	45-54	0.23		45-54	0.22
	55-64	0.33		55-64	0.30
	65-74	0.22		65-74	0.21
	75-84	0.10		75-84	0.13
	85-99	0.02		85-99	0.03
TNM stage II	15-44	0.13	Regional	15-44	0.15
	45-54	0.23		45-54	0.25
	55-64	0.25		55-64	0.26
	65-74	0.19		65-74	0.18
	75-84	0.15		75-84	0.13
	85-99	0.04		85-99	0.03
TNM stage III	15-44	0.14	Distant	15-44	0.09
	45-54	0.21		45-54	0.17
	55-64	0.21		55-64	0.23
	65-74	0.18		65-74	0.21
	75-84	0.18		75-84	0.21
	85-99	0.08		85-99	0.09
TNM stage IV	15-44	0.08	Missing stage	15-44	0.08
	45-54	0.15		45-54	0.15
	55-64	0.20		55-64	0.20
	65-74	0.23		65-74	0.17
	75-84	0.25		75-84	0.22
	85-99	0.09		85-99	0.18
Missing stage	15-44	0.09			
	45-54	0.16			
	55-64	0.19			
	65-74	0.17			
	75-84	0.23			
	85-99	0.17			

**Additional file 2. Age-standardised three-year net survival for women diagnosed with breast cancer during 2000-7 by stage at diagnosis and country, using known stage and imputed stage: TNM (upper figure) and SEER Summary Stage 2000 (lower figure)**

**TNM stage**



**SEER Summary Stage 2000**



- X survival estimate derived from women with known stage
- I range of survival estimates derived for all women after imputation of stage where it was missing (see text)

**Notes:**

Denmark and Norway: national data; Australia: New South Wales; Canada: British Columbia and Manitoba; Sweden: Uppsala-Örebro and Stockholm-Gotland health regions; UK (TNM analysis): data from Northern Ireland, Wales and the Northern and Yorkshire Cancer Registry and Information Service, Eastern Cancer Registration and Information Centre, Oxford Cancer Intelligence Unit, West Midlands Cancer Intelligence Unit in England; UK (SEER analysis): Northern Ireland and Wales. In Denmark we analysed women diagnosed during 2004-7