

Assessment of Extreme Heat and Hospitalizations to Inform Early Warning Systems

Ambarish Vaidyanathan¹, Shubhayu Saha¹, Ana Vicedo-Cabrera², Antonio Gasparrini³, Nabill Abdurehman⁴, Rick Jordan⁵, Michelle Hawkins⁶, Jeremy Hess⁷, Anne Elixhauser⁸

¹Centers for Disease Control and Prevention, ²LSHTM, ³London School of Hygiene & Tropical Medicine, ⁴Oak Ridge Institute of Science and Education, ⁵Social & Scientific Systems (S3), Inc., ⁶National Weather Service, National Oceanic and Atmospheric Administration, ⁷Center for Health and the Global Environment, University of Washington, ⁸Agency for Healthcare Research and Quality

Submitted to Proceedings of the National Academy of Sciences of the United States of America

Heat early warning systems and action plans use temperature thresholds to trigger warnings and risk communication. In this study, we conduct multi-state analyses, exploring associations between heat and all-cause and cause-specific hospitalizations, to inform the design and development of heat-health early warning systems. We used a two-stage analysis to estimate heat-health risk relationships between heat index and hospitalizations in 1,617 counties in the United States for 2003-2012. The first stage involved a county-level time series quasi-Poisson regression, using a Distributed Lag Non-Linear Model, to estimate heat-health associations. The second stage involved a multivariate random-effects meta-analysis to pool county-specific E-R associations across larger geographic scales, such as by state or climate region. Using results from this two-stage analysis, we identified heat index ranges that correspond with significant heat-attributable burden. We then compared those with the National Oceanic and Atmospheric Administration National Weather Service (NWS) heat alert criteria used during the same time period. Associations between heat index and cause-specific hospitalizations vary widely by geography and health outcome. Heat-attributable burden starts to occur at moderately hot heat index values, which in some regions are below the alert ranges used by the NWS during the study time period. Locally-specific health evidence can beneficially inform and calibrate heat alert criteria. A synchronization of health findings with traditional weather forecasting efforts could be critical in the development of effective heat-health early warning systems.

Public Health | Extreme Heat | Public Policy | Evidence-based Decision-making | Early Warning Systems

Introduction

Extreme heat is an established hazard. Risk for a range of conditions is associated with extreme heat exposure (1, 2), including morbidity from heat illness (3), electrolyte and renal dysfunction (4, 5), and exacerbations of chronic respiratory (6) and cardiovascular (7) disease, as well as all-cause mortality (8). The association between the particular temperatures at which risks are manifested and the magnitude of the effects vary regionally due to acclimatization, air conditioning prevalence, demography, and other factors (9).

Successful risk management varies by setting and includes prevention strategies ranging from engineering controls such as air conditioning, management controls such as shifts in work schedules and activity restrictions, and behavioral controls encouraged through heat early warning systems and action plans (10). These systems and plans are activities that link forecasts of heat exposure with risk communication and risk reduction activities aimed at reducing exposure and limiting adverse health impacts among the exposed such as cooling centers, neighbor check-ins, and maintenance of air conditioning availability (11), that have been linked with reduced morbidity and mortality.

Given variability in temperature thresholds at which risks increase, one central consideration in heat early warning systems is the threshold at which warnings should be issued (12). Guidance

recommends setting thresholds based on analysis of associations between heat exposure (measured using a variety of metrics) and adverse health effects (10). In the United States (U.S.), the National Oceanic and Atmospheric Administration's National Weather Service (NWS) issues excessive heat watch, warning, and heat advisory alerts as weather conditions warrant. While NWS provides guidance to its Weather Forecast Offices (WFOs) on appropriate thresholds for issuing these alerts, WFOs are encouraged to work with local officials to define locally appropriate alert thresholds (13). There is no standard protocol for incorporating local epidemiological analyses, as relevant data and expertise may not be locally available. In addition to these constraints, risk assessment has been complicated by a lack of consensus regarding exposure assessment (e.g. which temperature metrics to use), standardization of heat-sensitive health outcomes (e.g. morbidity measures or mortality) and resulting heat attributable health impacts, and standard analytical approaches, despite emerging consensus in the field that best practices include basing thresholds on recent time-series analyses of the relationship between temperature and the best available local health data (10, 14). Recent analyses have demonstrated that morbidity impacts, when available, may be most appropriate, as these outcomes are more prevalent than mortality endpoints (15, 16).

In many locales in the U.S., this goal remains aspirational. While risks associated with heat exposure in the U.S. have been well characterized for certain at-risk populations and regions (6, 17, 18, 19), there have been no comprehensive, national-

Significance

Heat early warning systems and action plans have been shown to reduce risks of heat exposure, and best practice recommends that plans be built around local epidemiologic evidence and emergency management capacity. This evaluation provides useful information for heat early warning system and action plan administrators regarding the temperature ranges at which health impacts are manifest, the morbidity outcomes most sensitive to heat, and alignment between alert thresholds and temperatures at which disease burden is most pronounced. The results suggest opportunities for improvement and for refinement of prevention messaging as well as coordination between meteorological and public health authorities at multiple levels before, during, and after periods of extreme heat.

Reserved for Publication Footnotes

137
138
139
140
141
142
143
144
145
146
147
148
149
150
151
152
153
154
155
156
157
158
159
160
161
162
163
164
165
166
167
168
169
170
171
172
173
174
175
176
177
178
179
180
181
182
183
184
185
186
187
188
189
190
191
192
193
194
195
196
197
198
199
200
201
202
203
204

205
206
207
208
209
210
211
212
213
214
215
216
217
218
219
220
221
222
223
224
225
226
227
228
229
230
231
232
233
234
235
236
237
238
239
240
241
242
243
244
245
246
247
248
249
250
251
252
253
254
255
256
257
258
259
260
261
262
263
264
265
266
267
268
269
270
271
272

Table 1. State-specific population and heat index distribution with information on heat index values for issuing heat alerts

Climate region	State	Number of counties with population greater than 10,000 people	Average yearly state population (2003-2012)*	Percent of average yearly US population (2003-2012)	Daily maximum heat index (°F) distribution					Median and range of heat index values used for issuing heat alerts
					5 th Percentile	25 th Percentile	Median	75 th Percentile	95 th Percentile	
Central	Illinois	87	12.6 M	4.2	62	74	82	91	104	109 (101, 118)
	Indiana	88	6.4 M	2.1	64	75	82	91	103	108 (100, 116)
	Kentucky	99	4.1 M	1.4	67	78	85	93	104	107 (101, 116)
	Missouri	89	5.7 M	1.9	67	79	88	98	109	109 (102, 116)
East North Central	West Virginia	44	1.7 M	0.6	64	74	80	87	96	104 (96, 113)
	Iowa	76	2.8 M	0.9	63	75	83	92	106	110 (98, 120)
	Northeast	Maryland	24	5.7 M	1.9	65	75	83	90	100 (97, 111)
Northwest	New York	61	19.3 M	6.4	61	71	78	84	95	100 (95, 111)
	Rhode Island	5	1.1 M	0.4	59	69	75	83	93	101 (93, 113)
South	Oregon	29	3.7 M	1.2	57	67	74	80	88	90 (82, 101)
	Kansas	39	2.5 M	0.8	68	80	89	99	109	108 (98, 114)
Southeast	Florida	65	18.3 M	6.1	85	92	96	100	105	109 (107, 111)
	Georgia	127	9.1 M	3.0	76	85	91	97	104	107 (101, 111)
	North Carolina	97	9.1 M	3.0	71	82	88	95	102	107 (102, 112)
Southwest	Virginia	115	7.7 M	2.5	67	77	85	92	101	106 (100, 112)
	Arizona	14	6.1 M	2.0	82	90	96	101	106	104 (96, 109)
West	Colorado	38	4.7 M	1.6	61	74	80	84	89	91 (91, 92)
	Utah	20	2.6 M	0.9	59	73	81	85	90	100 (100, 104)
West North Central	California	55	36.5 M	12.1	69	77	82	86	91	92 (86, 97)
	Nevada	10	2.5 M	0.8	73	83	90	94	99	99 (93, 103)
West North Central	Nebraska	27	1.5 M	0.5	65	78	86	95	107	109 (104, 115)
	South Dakota	18	0.6 M	0.2	60	73	82	89	100	106 (100, 112)

*only including counties in the state with population greater than 10,000

273
274
275
276
277
278
279
280
281
282
283
284
285
286
287
288
289
290
291
292
293
294
295
296
297
298
299
300
301
302
303
304
305
306
307
308
309
310
311
312
313
314
315
316
317
318
319
320
321
322
323
324
325
326
327
328
329
330
331
332
333
334
335
336
337
338
339
340

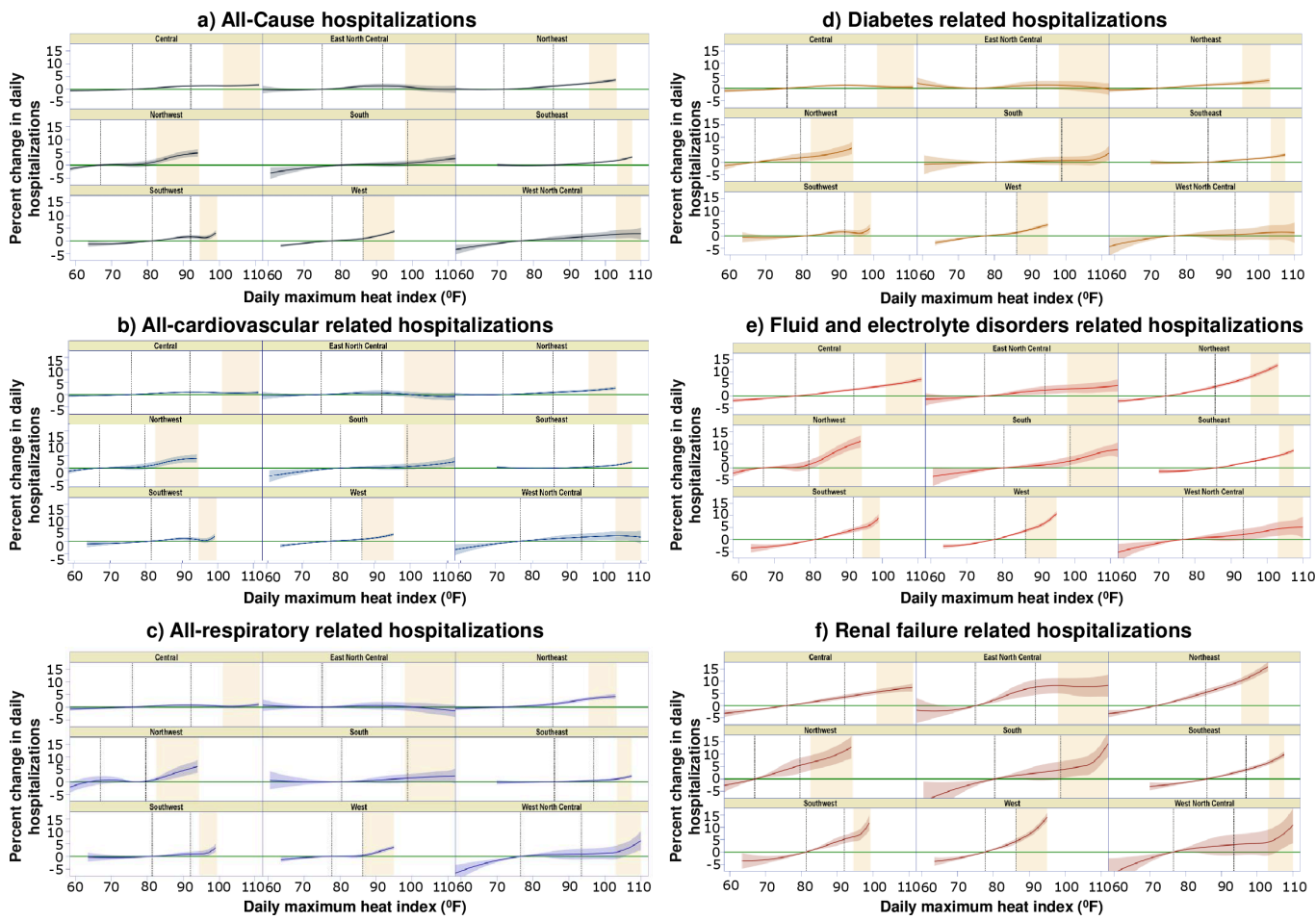


Fig. 1. Overall exposure-response associations for various hospitalization outcomes, by U.S. climate regions

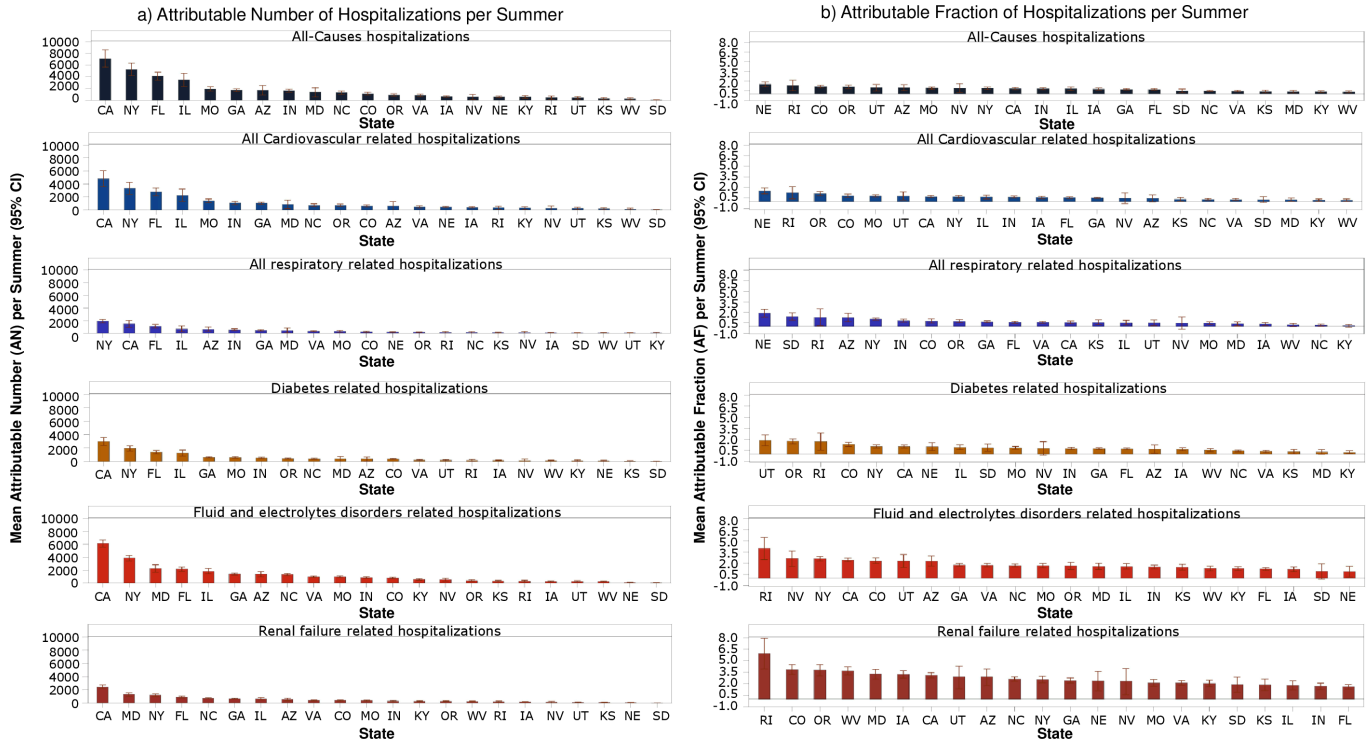
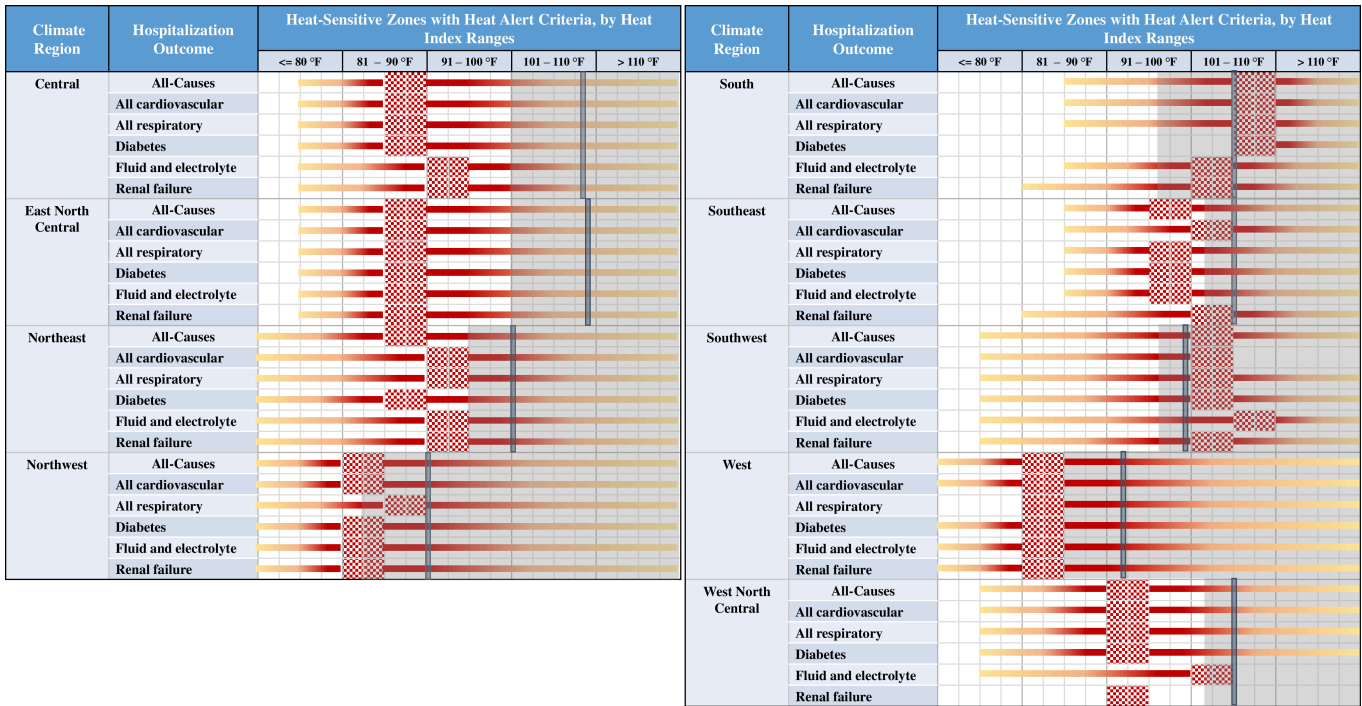


Fig. 2. State-specific attributable fraction and number of hospitalizations above minimum morbidity heat index for a cumulative lag period of 2 days

341
342
343
344
345
346
347
348
349
350
351
352
353
354
355
356
357
358
359
360
361
362
363
364
365
366
367
368
369
370
371
372
373
374
375
376
377
378
379
380
381
382
383
384
385
386
387
388
389
390
391
392
393
394
395
396
397
398
399
400
401
402
403
404
405
406
407
408

409
410
411
412
413
414
415
416
417
418
419
420
421
422
423
424
425
426
427
428
429
430
431
432
433
434
435
436
437
438
439
440
441
442
443
444
445
446
447
448
449
450
451
452
453
454
455
456
457
458
459
460
461
462
463
464
465
466
467
468
469
470
471
472
473
474
475
476



477
478
479
480
481
482
483
484
485
486
487
488
489
490
491
492
493
494
495
496
497
498
499
500
501
502
503
504
505
506
507
508
509
510
511
512
513
514
515
516
517
518
519
520
521
522
523
524
525
526
527
528
529
530
531
532
533
534
535
536
537
538
539
540
541
542
543
544

Fig. 3. Region-specific heat-sensitive zones with heat alert criteria

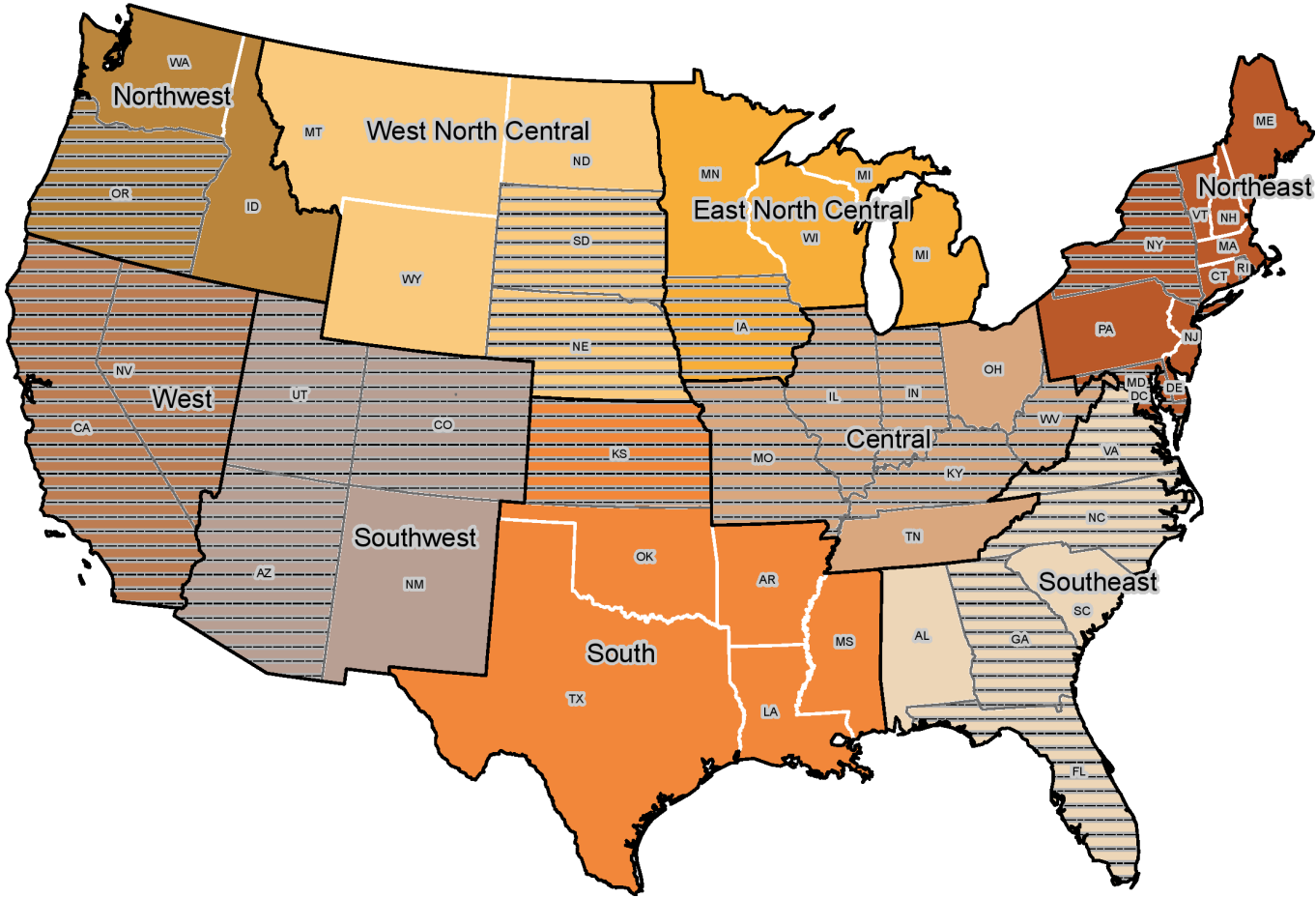


Fig. 4. States with hospitalization data and U.S. climate regions

scale investigations of regional-scale relationships between heat and morbidity-based health outcomes for the general population.

Moreover, most assessments have estimated average health risks for combined endpoints across an entire summertime heat exposure spectrum, ignoring the known differential sensitivity of certain outcomes to specific temperature ranges (15, 20). As a result, a clear, consistent nationwide assessment of adverse health impacts associated with heat exposure in the U.S. has been elusive, complicating the work of setting appropriate local warning thresholds. This disconnect has the potential to compromise the efficacy of heat risk communication, and to limit the public health utility of related activities such as surveillance for heat-related illness.

In this study, we performed multi-state analyses to explore relationships between extreme heat and hospitalizations, covering a majority of the U.S. population. The hospitalizations data that are used for this study are a census of all hospital admissions, regardless of age or insurance provider. Specifically, our objectives for this assessment were as follows: 1) to explore the relationship between heat index (21), which is a heat metric that combines the effect of humidity and temperature, and hospitalizations across heat index ranges observed during summer months; 2) to develop exposure-response (E-R) associations for all-cause and cause-specific hospitalizations, including cardiovascular, respiratory, diabetic, renal, and fluid and electrolyte illnesses; 3) to synthesize heat-attributable burden—adverse health impacts in terms of fractions and numbers, and 4) to identify heat index ranges, stratified by U.S. climate region (22) that correspond with significant adverse health impacts, and to compare those against current NWS heat alert criteria for those same regions.

Results

Our assessment examined approximately 50 million inpatient hospitalization records, covering 1,617 counties across 22 states for the summer months of 2003-2012, to model the relationship between heat index and adverse health outcomes. This multistate hospitalization database accounts for every single patient treated as an inpatient in hospitals, regardless of any age criteria or the type of insurance used to pay for services. We provide a state-specific summary of population coverage and number of counties included in this assessment in Table 1. Also in Table 1, we show the population-weighted distribution of daily maximum heat index and the range of values for which heat alerts are typically issued. We provide the crude rates of summertime hospitalizations from all causes and for specific outcomes in the supplemental section (See SI Appendix, Table S1) for this article. The states considered for this assessment accounted for 55.1% of the U.S. total population and are spread out across all nine U.S. climate regions. We excluded 390 counties for population size of less than 10,000 though this exclusion only reduced the sample size of inpatient hospitalization records by 0.6%.

For most states, the median heat alert criteria fell between the 95th and 99th percentile summertime heat index distribution. While most of the states in the same climate region share a similar temperature climatology, we found significant intra-regional variability in the Southwest climate region; (e.g. comparing Arizona with Colorado and Utah). However, this variation was mostly due to the high summertime heat index values prevalent in metropolitan areas of Phoenix, Arizona and surrounding areas.

For this analysis, associations between heat index and hospitalization outcomes during summer months were assessed through a two-stage time-series analysis. Non-linear and delayed associations were estimated for each county, and then pooled at state and climate region level through a meta-regression analysis. Risk estimates for hospitalizations are reported in terms of mean percent change (and 95% CI) in daily hospitalizations for heat index above the Minimum Morbidity Heat Index (MMHI). The MMHI corresponds to the heat index value above which heat-related morbidity risk starts to increase. County-specific maps

of MMHI for each hospitalization outcome are provided in the supplemental section of this article (See SI Appendix, Figure S1). In Figure 1, we present the mean percent change (and 95% CI) in daily hospitalizations observed for summertime heat index values for each climate region. Comparing across health outcomes, we found that the largest increases in slope of the overall E-R associations were observed for outcomes such as renal failure, and fluid and electrolyte related disorders; cardiovascular, respiratory and diabetes related illnesses showed a steady but much lower percent increase in daily hospitalizations for a unit change in heat index values. For all-cause hospitalizations, we found statistically significant E-R associations for most states over a wide-range of heat index values, however the effect sizes were much smaller when compared to renal failure, and fluid and electrolyte disorders related hospitalizations. Also noteworthy were the findings on the varying risk sensitivity of cause-specific health outcomes to moderately high heat index values, indicating that the health burden from heat exposure is apparent below heat alert thresholds (denoted by golden bands in Figure 1).

Figure 1: Overall exposure-response associations for various hospitalization outcomes, by U.S. climate regions*

*Percent change in risk estimated from the minimum morbidity heat index for a cumulative lag period of 2 days

We present the state-specific heat-attributable adverse health impacts, i.e., the heat attributable fraction (AF) and attributable number (AN) per summer, in Figure 2 for each hospitalization outcome considered in this assessment. We summarize the mean and 95% confidence interval (CI) for AF and AN across all heat index values above the MMHI.

Figure 2: State-specific attributable fraction and number of hospitalizations above minimum morbidity heat index for a cumulative lag period of 2 days

For most states, AFs associated with renal failure and fluid and electrolyte related disorders showed a much greater sensitivity to heat index values above MMHI than other health outcomes; Within each state and for a given hospitalization outcome, the county level variation in AF was minimal; however, significant county-level differences were observed between hospitalization outcomes (See SI Appendix, Figure S2). County level maps for cardiovascular and respiratory diseases, as well as hospitalizations for all causes, showed a similar pattern with most counties having a mean AF that is lesser than or equal to 1.3%. For renal failure and fluid and electrolyte related disorders, mean AFs were significantly higher than for other outcomes, with some counties having mean AFs greater than 3%. For diabetes-related hospitalizations, regional differences were observed with mean AFs greater for counties in Northwest, Southwest, and West but relatively lower for counties in other regions. The spatial patterns of mean ANs (See SI Appendix, Figure S3) reflect location-specific baseline numbers for each hospitalization outcome, which are mostly driven by population sizes. Essentially, areas with high risk and small population sizes have comparable burden to areas with low risk but a fairly substantial population. Moreover, for a given location, heat-attributable adverse health impacts are distributed unevenly across summertime heat index values. Summary of AF (See SI Appendix, Table S2) and AN (See SI Appendix, Table S3) by heat index ranges for each hospitalization outcome and by state are provided in the supplemental section of this article. In most states, AFs and ANs correspond well with person-days of exposure observed under each heat index range.

In Figure 3, we translate information gleaned from aforementioned results on heat-attributable adverse health impacts into a one-dimensional heat chart. In doing so, we identify “heat-sensitive zones,” based on heat index ranges at which positively significant adverse health impacts (AFs/ANs) are observed for different climate regions and health outcomes considered in this assessment. The chart also offers a comparison between heat

index ranges used for issuing alerts and those associated with peak adverse health impacts. Evidently, in colder regions of the U.S., e.g., the Central Region, a large proportion of adverse health impacts tend to occur at moderate heat index ranges—well below the heat index values used by some WFOs at the time of this study for issuing alerts. In warmer regions of the U.S., e.g., the South Region, heat index ranges that are sensitive to adverse health impacts overlap with those used for issuing alerts. However, in certain regions, e.g., the Southwest Region, peak adverse health impacts are observed at heat index ranges that are above the median heat alert criteria.

Figure 3: Region-specific heat-sensitive zones with heat alert criteria

Discussion

Our assessment is novel in scope, scale, and has implications for current and future risk management related to heat exposure. Prior assessments that have tried to identify heat alert thresholds based on heat-health risk relationships are either city-specific or for communities covering a few states (23, 24). This study's novelty lies in the comprehensive assessment of heat exposure on various morbidity outcomes, including those that are less well characterized in published literature. In addition, we use a nationally consistent study design that employed a systematic modeling framework to link exposure to fine-scale, cause-specific hospitalizations to characterize adverse health impacts for the general population across climatologically diverse locations. We generated overall E-R associations and attributable health risk / burden estimates based on the census of all hospital admissions for the states included in this assessment, representing all climatic regions of the U.S., providing a firm basis to demonstrate prevailing heat-attributable health impacts at various public health decision making scales. We showed the importance of assessing multiple health outcomes, as risk sensitivity (slope) and magnitude of cause-specific E-R associations tend to differ across outcomes. We also identified a systematic dissociation in some geographic areas between the temperatures at which heat alerts are issued and the temperatures at which peak impacts are observed.

This misalignment in some geographic areas between the temperatures at which health burdens become significant and temperatures at which alerts are issued raises critical questions. Following the methodology of issuing heat alerts based on the extremity of heat index distribution regardless of differential population sensitivity, could generally fail to account for a large proportion of heat-attributable adverse health impacts observed at moderately hot conditions. This may be an important consideration, especially among those populations residing in cooler regions, with no structural adaptations such as air conditioning. While it is likely that there should be better alignment between alert thresholds and regional heat epidemiology, it is not clear exactly where warning thresholds should be set. There are a number of issues to consider, including the potential for warning fatigue (18). Conversely, in warmer locations, peak heat-attributable burden occurs past the median temperature for heat alerts, yet the burden curves generally show a monotonic rise above these threshold temperatures, raising questions about the effectiveness of current intervention strategies, heat alert messaging, and related activities. Potentially, this highlights inherent communication challenges in delivering actionable risk information and prevention guidelines to various stakeholders, including vulnerable populations. Additional research regarding specific protective measures and appropriate timing for risk reduction measures is needed to inform future risk management decisions.

Our results show promise for the use of regionally-specific health evidence to inform and calibrate heat alert protocols (24). Further, graduated heat alert protocols may help warn for low, moderate, and peak adverse health impacts. Such graduated

alerts, such as the air quality index (25), are currently used to identify areas impacted by poor air quality. In addition to empirical alignment of warnings with risks, such recalibrated heat alerts and more specific messaging might improve message relevance and facilitate better stakeholder engagement (26). In addition, web-enabled resources detailing individual preventative options (27), especially at low and moderately high temperatures, coupled with graduated community-level interventions, such as opening cooling shelters (28) during more extreme situations like heat waves, could potentially minimize heat-related adverse health impacts more effectively. These initiatives could strengthen heat preparedness and response capabilities, but require additional coordination across various local, state, and federal agencies.

There are some limitations to our assessment. Although our analysis included hospitalizations for more than 1200 counties covering 55% of the total U.S. population, E-R associations may not fully characterize the underlying heat-health relationship in areas that are sparsely populated or in regions where certain key states are omitted. While adding more counties would improve population coverage and generalizability of the findings, data access limitations prevented inclusion of additional counties. Another limitation is the identification of state- and region-level heat index ranges that are used for issuing alerts. Our primary goal was to explore the discrepancy between heat index values used for issuing alerts and those that are associated with significant heat attributable health burden for the time period used in this assessment; however, heat alert criteria, which are set by WFOs, are occasionally revised and sometimes changed based on epidemiologic evidence (23). Further, this assessment does not present any evidence on how some of the population-level health risks can be modified by individual risk factors (age, race, occupational status) or by community-level factors (poverty, density, land use and land cover). We plan to address these considerations in future work. Despite including robust daily, county-level environmental predictors in our time-series analyses, our results may be affected by residual confounding (29), especially should there be an omitted or misspecified confounder that fluctuates over time in a manner similar to heat index. Further, exposure misclassification could result from using modeled data sources, especially in areas where modeled estimates of heat metrics do not comport well with those derived from station based measurements. Lastly, relying on ambient weather data may also misrepresent true exposures, particularly in regions where prevalence of air conditioning is higher (30).

Heat-related illnesses are preventable (31) adverse health outcomes. Heat early warning systems and action plans have been shown to reduce risks of heat exposure, and best practice recommends that plans be built around local epidemiologic evidence and emergency management capacity. Our evaluation provides useful information for heat early warning system and action plan administrators regarding the temperature ranges at which health impacts are manifest, the morbidity outcomes most sensitive to heat, and alignment between alert thresholds and temperatures at which disease burden is most pronounced. The results suggest opportunities for improvement and for refinement of prevention messaging as well as coordination between meteorological and public health authorities at multiple levels before, during, and after extreme heat events. Improving risk management related to extreme heat involves multiple stakeholders and input from a range of disciplines. Our results could be a starting point for enhanced dialogue among various stakeholders involved in heat-health activities and for enhanced collaboration among various organizations, including those that facilitated our access to high resolution health data and expertise on weather forecasting and statistical modeling. Furthering these collaborations to develop a community of practice for systematically assessing and disseminating weather-related health impacts could strengthen pre-

paredness and response capacity, increase public awareness, and potentially reduce the substantial burden of disease associated with extreme heat.

Materials and Methods

Meteorological data

Hourly meteorological predictions from the North American Land Data Assimilation System Phase 2 (NLDAS) model (32), available for temperature, humidity, and other weather parameters at 0.125 degrees grid resolution. The hourly gridded data were made available to the Centers for Disease Control and Prevention as part of an interagency agreement with the National Aeronautics and Space Administration. We first calculated hourly heat index using hourly temperature and humidity information at a grid level. The heat index formula, which was obtained from NWS' weather prediction center website (<https://www.wpc.ncep.noaa.gov/html/heatindex.equation.shtml>). This formula was a refinement of the regression equation presented by Rothfus (33). Furthermore, we used a multi-stage geo-imputation approach to convert grid-level meteorological data to county-level estimates. We first calculated the population within each NLDAS grid cell using 2010 population estimates by U.S. Census blocks. We then converted NLDAS grid polygons with population information to centroids and related all the grid cell centroids to the counties in the conterminous U.S. based on a containment relationship. If a county did not have a grid cell centroid within its boundary, we assigned a grid cell centroid closest to the county boundary. Finally, we created a population-weighted average from all the grid cell centroids to obtain county-level estimates of daily maximum heat index, for the summer months (May 1 through September 30) and for years 2003-2012. We used daily maximum heat index as the primary exposure metric in this health risk assessment.

In addition, we obtained data on heat alerts (excessive heat warnings, watches, and heat advisories) from NWS for 2007-12. This dataset contained information on the WFO and the warning area within that WFO jurisdiction for which alerts were issued, as well as the date of alerts. We also gathered information on the geographical boundaries for warning areas within WFO, which changed over time during 2007-2012. Since the warning areas do not spatially align with county boundaries, we used spatial analysis techniques to reconcile boundary differences. First, we related the centroid of each U.S. Census block to the warning areas, and created a census-block level alert database with date information. Subsequently, we aggregated this block-level dataset to counties, and created a daily, county-level heat alert dataset. Further, we merged this alert database with county-level daily maximum heat index information. We used the resulting county-level linked database to summarize median, 5th and 95th percentile heat index values used for issuing alerts by state and climate region. Our intent was to capture the most common range of heat index values used for issuing alerts within each state or climate region, knowing that heat alerts are specific to area served by the WFO and are seldom issued to cover large geographic areas.

Hospitalization data

We accessed hospitalizations data for 22 states (Arizona [AZ], California [CA], Colorado [CO], Florida [FL], Georgia [GA], Iowa [IA], Illinois [IL], Indiana [IN], Kansas [KS], Kentucky [KY], Maryland [MD], Missouri [MO], North Carolina [NC], Nebraska [NE], Nevada[NV], New York [NY], Oregon [OR], Rhode Island [RI], South Dakota [SD], Utah [UT], Virginia [VA], West Virginia [WV]) spread out across 9 U.S. climate regions (Central, East North Central, Northeast, Northwest, South, Southeast, Southwest, West, West North Central) from the Agency for Health Research and Quality (AHRQ) Healthcare Cost Utilization Project (HCUP) (34) for the years 2003-2012. These are inpatient records for all patients visiting a hospital in these states. Figure 4 provides a map summary of the states with hospitalization data and their relationship to climate regions; a description of these regions is available from the NCEI (www.ncdc.noaa.gov/monitoring-references/maps/us-climate-regions.php). Using the Clinical Classification Software (CCS) developed by AHRQ (<https://www.hcup-us.ahrq.gov/toolssoftware/ccs/ccs.jsp>), we selected daily patient records for all available diagnoses combined and for the following illnesses based on the principal or secondary diagnoses: cardiovascular (CCS: 98-101, 106-110, 115) (7, 35), respiratory-related (CCS: 122, 127-128) (6, 35, 36), diabetes (CCS: 49-50), renal failure (CCS: 157) and electrolyte imbalance (CCS: 55) (5, 36). We summarized the extracted patient records for these conditions for the summer months to obtain counts by county of residence and day.

Figure 4: States with hospitalization data and U.S. climate regions

Statistical Analysis

We conducted a two-stage analysis (37) to estimate E-R relationships for all-cause and cause-specific hospitalizations across states and climatic regions. The theory and development of methods for modeling overall E-R associations, conducting meta-analysis, and estimating attributable risk from distributed lag models are articulated in several research articles published in scientific journals (37, 38, 39, 40, 49). A succinct summary of various aspects of our statistical analyses is provided below:

Assessment of the exposure-response (E-R) associations: county-level time series analyses (first stage)

The first stage involved a county-level time series quasi-Poisson regression using a Distributed Lag Non-Linear Model (DLNM) for the summer months (May 1 through September 30) to estimate location-specific heat index-morbidity associations. This class of models can describe complex non-linear and lagged dependencies through the combination of two functions specified in a cross-basis term of the exposure variable, defining both exposure-response association and the lag-response distribution (38).

The model formula is as follows:

$$\log(E(Y_{t,i})) = \alpha + s(x_{t,i}; \theta) + PM_{t,i} + Ozone_{t,i} + DOW_{t,i} + factor(year_{t,i}) + ns(DOY_{t,i}, df = 4) + ns(date_{t,i}, df = 2)$$

where $Y_{t,i}$ is the number of hospitalizations in day t and county i . The cross-

basis term of heat index ($s(x_{t,i}; \theta)$) is a bi-dimensional function s and coefficients θ which defines an exposure-lag-response risk surface accounting for 2 days of lag. It included a natural cubic B-spline function with internal knots at 50th and 90th percentile of the county-specific heat index distribution in the E-R dimension, and a strata function defining two levels in lag 0 and lag 1-2. This simplified the computational demands of our modeling approach, and at the same time captured the main association and the potential harvesting. However, we considered modeling overall E-R associations by fitting a natural spline with two internal knots equally-spaced on the log-scale for various lag periods, ranging from 0 to 7 days. State-specific lag-response relationships between heat index and various health outcomes considered in this assessment are provided in the supplemental section (See SI Appendix, Figure S4-S9) of this article. While, the most appropriate cumulative lag period varied by state, a 2-day period seemed the most sensitive across most states and health outcomes. And perusing previously published literature (41, 42, 43, 44, 45) reiterated that a 2-day cumulative lag period for exploring delayed effects of heat exposure on hospitalizations was appropriate. The main model also included a linear function of daily 24-hr average fine particulate matter concentration ($PM_{2.5}$), average 8-hr ozone daily maximum concentration ($Ozone_{t,i}$), indicators for day of the week ($DOW_{t,i}$), indicator for year ($factor(year_{t,i})$), natural cubic B-spline of the day of the year with four degrees of freedom to control for seasonality ($ns(DOY_{t,i}, df = 4)$) and natural cubic B-spline of the time with 2 degrees of freedom for long-term trends ($ns(date_{t,i}, df = 2)$). Each bi-dimensional function was reduced to uni-dimensional overall cumulative E-R curves, which were then used as input for the second-stage pooled analysis. We excluded counties with an average population of less than 10,000 people for the analysis period to avoid model convergence issues resulting from small sample size.

Assessment of the exposure-response (E-R) associations: pooled analyses to generate state and county-level summaries (second stage)

Our second stage involved a multivariate random-effects meta-analysis^{30,31} to pool the county-specific uni-dimensional overall cumulative E-R associations generated in the first stage across larger geographic scales, such as by state or climate region. The meta-analytic model included a geographic scale factor (indicator for climate region or state) used for predicting E-R associations. We evaluated for residual heterogeneity in the meta-analytic model by examining the Cochran Q test results and I² statistic (39, 46). We then used the fitted meta-analytic model to derive the best linear unbiased prediction (BLUP) of the overall cumulative exposure-response association in each county (37). BLUP-based predictions allow sparsely populated areas, which are typically characterized by imprecise effect estimates, to borrow information from largely populated neighboring areas that share similar characteristics (38, 39). County-specific MMHI (47, 48), which corresponds to a minimum morbidity percentile between the 25th and the 75th percentiles of the summertime heat index distribution, was derived from the BLUPs of the overall cumulative exposure-response association in each location.

Estimation of the heat-attributable adverse health impacts

The MMHI was used as the reference point for estimating the number and fraction of hospitalizations attributable heat (AN, AF). AN was calculated as the sum of all hospitalizations in days with heat index values higher than the estimated MMHI in a specific county. AF corresponded to the ratio of AN by the total number of hospitalizations. (49). We calculated empirical confidence limits using Monte Carlo simulations ($n = 2000$), assuming a multivariate normal distribution of the BLUP-based predictions. We also calculated ANs and AFs, by 5 °F increments in heat index, for each hospitalization outcome considered in this assessment. Figure 3 combines this attributable burden information with the heat index ranges used for issuing heat alerts. First, heat-sensitive zones were derived using region-specific heat-attributable burden information for all outcomes considered in this assessment, and are denoted in Figure 3 as "horizontal bars"—shaded in a yellow (low burden) to red (high burden) color gradient. The operating range for this heat-sensitive zone is the heat index values over which the attributable burden is statistically significant. In addition, heat index ranges that are associated with peak burden were identified by "red-checked boxes." Lastly, the heat index range used for issuing heat alerts (denoted by "shaded gray area") and median heat alert criteria (denoted by "gray vertical bar") were juxtaposed with region-specific heat-sensitive zones.

953 All primary statistical analyses were performed with R software (version
954 3.0.3) using the packages *dlnm* and *mvmeta*. We used SAS v9.4 and ArcGIS
955 9.3 for descriptive analysis and for creating displays.

956 Article Information

957 Author Contributions:

- 958 · Concept and design: Vaidyanathan, Gasparrini, Saha, and Elixhauser
- 959 · Acquisition, analysis, or interpretation of data: Vaidyanathan, Ab-
960 durehman, and Jordan
- 961 · Drafting of manuscript: Vaidyanathan
- 962 · Critical revision of the manuscript: Hess, Elixhauser, Hawkins, Vicedo-
963 Cabrera, Gasparrini
- 964 · Statistical analysis: Vaidyanathan, Vicedo-Cabrera, Gasparrini
- 965 · Administrative, technical, or material support: Vaidyanathan, Elix-
966 hauser, Hess, Jordan, and Gasparrini

967 A acknowledgment Section: The authors would like to acknowledge the
968 support provided by the CDC's Office for Public Health Preparedness and
969 Response, and National Centers for Environmental Health for the project.
970 The authors thank Dr. Dana Flanders, Dr. Josephine Mallilay, Ms. Heather
971 Strosnider, Dr. Fuyuen Yip, and other reviewers, both internal and external
972 to authors' affiliated organizations, who have provided insightful comments

- 973 1. Ye X, Wolff R, Yu W, Vaneckova P, Pan X, Tong S (2012) Ambient temperature and morbidity:
974 a review of epidemiological evidence. *Environmental health perspectives* 120(1):19-28.
- 975 2. Li M, Gu S, Bi P, Yang J, Liu Q (2015) Heat waves and morbidity: current knowledge and
976 further direction—a comprehensive literature review. *International journal of environmental
977 research and public health* 12(5):5256-5283.
- 978 3. Kovats RS, Hajat S (2008) Heat stress and public health: a critical review. *Annu Rev Public
979 Health* 29:41-55.
- 980 4. Basu R, Pearson D, Malig B, Broadwin R, Green R (2012) The effect of high ambient
981 temperature on emergency room visits. *Epidemiology* 23(6):813-820.
- 982 5. Knowlton K, Rotkin-Ellman M, King G, et al. (2009) The 2006 California heat wave: im-
983 pacts on hospitalizations and emergency department visits. *Environmental health perspectives*
984 117(1):61-67.
- 985 6. Anderson GB, Dominici F, Wang Y, McCormack MC, Bell ML, Peng RD (2013) Heat-related
986 emergency hospitalizations for respiratory diseases in the Medicare population. *American
987 Journal of Respiratory & Critical Care Medicine* 187(10):1098-1103.
- 988 7. Schwartz J, Samet JM, Patz JA (2004) Hospital admissions for heart disease: the effects of
989 temperature and humidity. *Epidemiology* 15(6):755-761.
- 990 8. Kovats RS, Hajat S. Heat stress and public health: a critical review (2008) *Annual Review of
991 Public Health* 29:41-55.
- 992 9. Basu R, Samet JM (2002) Relation between elevated ambient temperature and mortality: a
993 review of the epidemiologic evidence. *Epidemiologic Reviews* 24(2):190-202.
- 994 10. McGregor GR, Bessemoulin P, Ebi K, Menne B (2015) Heatwaves and Health: Guidance on
995 Warning-System Development. *World Meteorological Organization*, Geneva, Switzerland
- 996 11. Toloo GS, FitzGerald G, Aitken P, Verrall K, Tong S (2013) Are heat warning systems
997 effective? *Environmental health* 12(1):27.
- 998 12. Metzger KB, Ito K, Matte TD (2010) Summer heat and mortality in New York City: how hot
999 is too hot? *Environmental Health Perspectives* 118(1):80-86.
- 1000 13. Hawkins MD, Brown V, Ferrell J (2017) Assessment of NOAA National Weather Service
1001 Methods to Warn for Extreme Heat Events. *Weather, Climate, and Society* 9(1):5-13.
- 1002 14. Hess JJ, Ebi KL (2016) Iterative management of heat early warning systems in a changing
1003 climate. *Annals of the New York Academy of Sciences* 1382(1):21-30.
- 1004 15. Petiti DB, Hondula DM, Yang S, Harlan SL, Chowell G (2015) Multiple trigger points
1005 for quantifying heat-health impacts: new evidence from a hot climate. *Environmental health
1006 perspectives* 124.2 (2016): 176.
- 1007 16. Chen T, Sarnat SE, Grundstein AJ, Winquist A, Chang HH (2017) Time-series Analysis
1008 of Heat Waves and Emergency Department Visits in Atlanta, 1993 to 2012. *Environmental
1009 Health Perspectives*, 125(5).
- 1010 17. Hess JJ, Saha S, Lubber G (2014) Summertime acute heat illness in U.S. emergency depart-
1011 ments from 2006 through 2010: analysis of a nationally representative sample. *Environmental
1012 health perspectives* 122(11):1209-1215.
- 1013 18. Noe RS, Jin JO, Wolkin AF (2012) Exposure to natural cold and heat: hypothermia and
1014 hyperthermia Medicare claims, United States, 2004–2005. *American journal of public health*
1015 102(4):e11-e18.
- 1016 19. Saha S, Brock JW, Vaidyanathan A, Easterling DR, Lubber G (2015) Spatial variation in
1017 hyperthermia emergency department visits among those with employer-based insurance in
1018 the United States—a case-crossover analysis. *Environmental Health* 14(1):20.
- 1019 20. Ho HC, Knudby A, Walker BB, Henderson SB (2017) Delineation of spatial variability in
1020 the temperature–mortality relationship on extremely hot days in greater Vancouver, Canada.
Environmental health perspectives 125(1), 66.
21. Anderson GB, Bell ML, Peng RD (2013) Methods to calculate the heat index as an exposure
metric in environmental health research. *Environmental health perspectives* 121(10):1111.
22. Karl T, Koss WJ (1984) *Regional and national monthly, seasonal, and annual temperature
weighted by area, 1895-1983*. National Climatic Data Center.
23. Metzger KB, Ito K, Matte TD (2010) Summer heat and mortality in New York City: how hot
is too hot? *Environmental health perspectives* 118(1):80.
24. Wellenius GA, Eliot MN, Bush KE, et al. (2017) Heat-related morbidity and mortality in New
England: evidence for local policy. *Environmental research* 156:845-853.
25. Environmental Protection Agency. Airnow. <https://airnow.gov/index.cfm?action=aqibasics.aqi>. Accessed August 15, 2017.
26. Foster H (2013) Interactive hazard preparation strategy efficacy: considerations for future

toward the improvement of this manuscript. This work would not have
been possible without the data submitted by the following state data
organizations that participate as Healthcare Cost and Utilization Project
(HCUP) State Inpatient Databases:

Arizona Department of Health Services, California Office of Statewide
Health Planning and Development, Colorado Hospital Association, Florida
Agency for Health Care Administration, Georgia Hospital Association, Illinois
Department of Public Health, Indiana Hospital Association, Iowa Hospital
Association, Kansas Hospital Association, Kentucky Cabinet for Health and
Family Services, Maryland Health Services Cost Review Commission, Missouri
Hospital Industry Data Institute, Nebraska Hospital Association, Nevada De-
partment of Health and Human Services, New York State Department of
Health, North Carolina Department of Health and Human Services, Oregon
Association of Hospitals and Health Systems, Oregon Office of Health Analyt-
ics, Rhode Island Department of Health, South Dakota Association of Health-
care Organizations, Utah Department of Health, Virginia Health Information,
West Virginia Department of Health and Human Resources, West Virginia
Health Care Authority. Conflict of Interest Disclosures: The authors declare no
conflict of interest. The authors declare that they have no actual or potential
competing financial interests. Disclaimer: The findings and conclusions in this
paper are those of the authors and do not necessarily represent the official
position of the CDC and other organizations participating in this assessment.

- community engagement programs. *Australian Journal of Emergency Management* 28(1):8.
27. Centers for Disease Control and Prevention. <https://www.cdc.gov/features/extremeheat/index.html>.
Accessed August 15, 2017.
28. Toloo G, FitzGerald G, Aitken P, Verrall K, Tong S (2013) Evaluating the effectiveness of
heat warning systems: systematic review of epidemiological evidence. *International journal of
public health* 58(5):667-681.
29. Flanders WD, Klein M, Darrow LA, Strickland MJ, Sarnat SE, Sarnat JA, Waller LA,
Winquist A, Tolbert PE (2011) A method for detection of residual confounding in time-series
and other observational studies. *Epidemiology* 22(1):59.
30. Davis RE, Knappenberger PC, Michaels PJ, Novicoff WM (2003) Changing heat-related
mortality in the United States. *Environmental health perspectives* 111(14):1712.
31. Choudhary E, Vaidyanathan A (2014) Heat stress illness hospitalizations—Environmental
public health tracking program, 20 states, 2001–2010. *Morb Mortal Wkly Rep Surveill Summ*.
63(13):1-10.
32. Mitchell KE, Lohmann D, Houser PR, et al (2004) The multi-institution North American
Land Data Assimilation System (NLDAS): Utilizing multiple GCM products and partners in
a continental distributed hydrological modeling system. *Journal of Geophysical Research:
Atmospheres* 109 (D7).
33. Rothfusz LP. The heat index equation (1990) *National Weather Service Technical Attachment
(SR 90–23)*.
34. Healthcare Cost and Utilization Project (HCUP) (2017) Agency for Healthcare Research
and Quality. Rockville, MD.
35. Lin S, Luo M, Walker RJ, Liu X, Hwang SA, Chinery R (2009) Extreme high temperatures
and hospital admissions for respiratory and cardiovascular diseases. *Epidemiology* 20(5):738-
746.
36. Green RS, Basu R, Malig B, Broadwin R, Kim JJ, Ostro B (2010) The effect of temperature
on hospital admissions in nine California counties. *International Journal of Public Health*
55(2):113-121.
37. Gasparrini A, Guo Y, Hashizume M, et al. (2015) Mortality risk attributable to high and low
ambient temperature: a multicountry observational study. *The Lancet* 386(9991):369-375.
38. Gasparrini A (2014) Modeling exposure–lag–response associations with distributed lag
non-linear models. *Statistics in medicine* 33(5):881-899.
39. Gasparrini A, Armstrong B, Kenward M (2012) Multivariate meta-analysis for non-linear
and other multi-parameter associations. *Statistics in medicine* 31(29):3821-3839.
40. Gasparrini A, Armstrong B (2013) Reducing and meta-analysing estimates from distributed
lag non-linear models. *BMC medical research methodology* 13(1):1.
41. Hajat S, Armstrong B, Baccini M, et al. (2006) Impact of high temperatures on mortality: is
there an added heat wave effect? *Epidemiology* 17(6):632-638.
42. Bunker A, Wildenhain J, Vandenbergh A, et al. Effects of air temperature on climate-
sensitive mortality and morbidity outcomes in the elderly; a systematic review and meta-
analysis of epidemiological evidence. *EBioMedicine*. 2016;6:258-268.
43. Guo Y, Punnasiri K, Tong S (2012) Effects of temperature on mortality in Chiang Mai city,
Thailand: a time series study. *Environmental health* 11(1):36.
44. Lam HC, Li AM, Chan EY, Goggins WB (2016) The short-term association between asthma
hospitalisations, ambient temperature, other meteorological factors and air pollutants in
Hong Kong: a time-series study. *Thorax* [ajnl-2015-208054](https://doi.org/10.1136/thorax-2015-208054).
45. Phung D, Guo Y, Nguyen HT, Rutherford S, Baum S, Chu C (2016) High temperature and
risk of hospitalizations, and effect modifying potential of socio-economic conditions: A multi-
province study in the tropical Mekong Delta Region. *Environment international* 92:77-86.
46. Higgins J, Thompson SG (2002) Quantifying heterogeneity in a meta-analysis. *Statistics in
medicine* 21(11):1539-1558.
47. Curriero FC, Heiner KS, Samet JM, Zeger SL, Strug L, Patz JA (2002) Temperature and
mortality in 11 cities of the eastern United States. *American journal of epidemiology* 155(1):80-
87.
48. Armstrong B (2006) Models for the relationship between ambient temperature and daily
mortality. *Epidemiology* 17(6):624-631.
49. Gasparrini A, Leone M (2014) Attributable risk from distributed lag models. *BMC medical
research methodology* 14(1):55.

Table S1: State-specific crude rates for hospitalization outcomes

Climate region	State	Average yearly state population (2003-2012)	Summertime (May - Sep) crude rate for hospitalizations (per 10,000)					
			All-causes	All cardiovascular related	All respiratory related	Diabetes related	Fluid and Electrolyte disorders related	Renal failure related
Central	Illinois	12.7 M	338	271	113	106	92	28
	Indiana	6.4 M	309	254	115	108	89	28
	Kentucky	4.3 M	377	304	151	123	104	33
	Missouri	5.9 M	366	297	130	121	103	30
	West Virginia	1.8 M	446	364	179	150	117	39
East North Central	Iowa	3. M	287	230	95	88	81	21
Northeast	Maryland	5.7 M	660	534	224	219	249	70
	New York	19.3 M	305	247	98	98	76	24
	Rhode Island	1.1 M	310	252	111	94	74	34
Northwest	Oregon	3.7 M	215	169	69	65	62	20
South	Kansas	2.8 M	272	214	87	86	88	22
Southeast	Florida	18.3 M	321	265	106	105	95	31
	Georgia	9.3 M	262	213	83	88	86	29
	North Carolina	9.1 M	298	238	95	94	85	31
	Virginia	7.8 M	244	195	79	77	74	25
Southwest	Arizona	6.1 M	283	216	88	87	98	30
	Colorado	4.8 M	204	154	69	56	71	21
	Utah	2.6 M	160	112	42	41	46	14
West	California	36.5 M	232	185	73	79	68	22
	Nevada	2.6 M	249	197	84	76	79	25
West North Central	Nebraska	1.8 M	248	190	76	67	64	19
	South Dakota	0.8 M	243	189	85	73	75	18

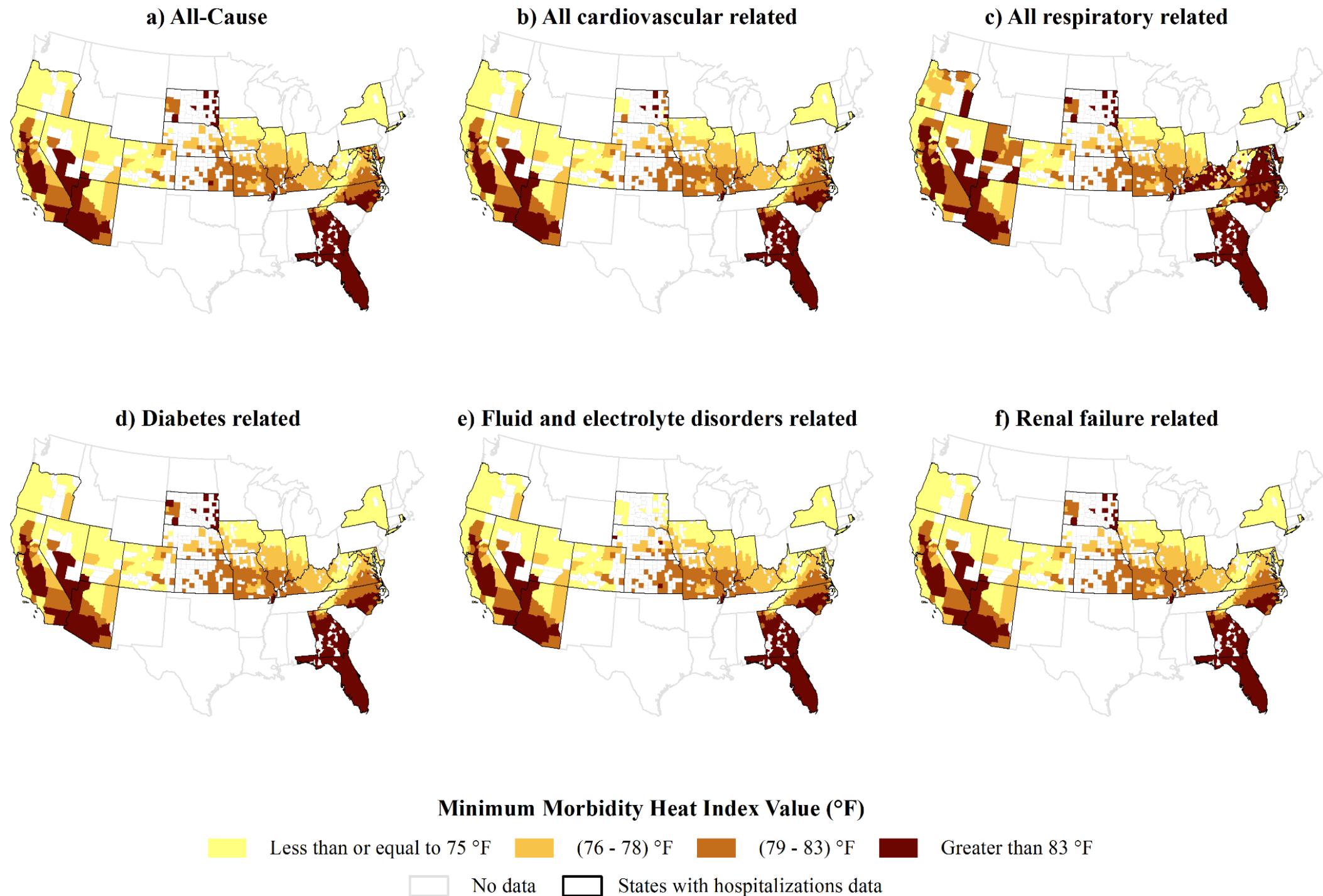
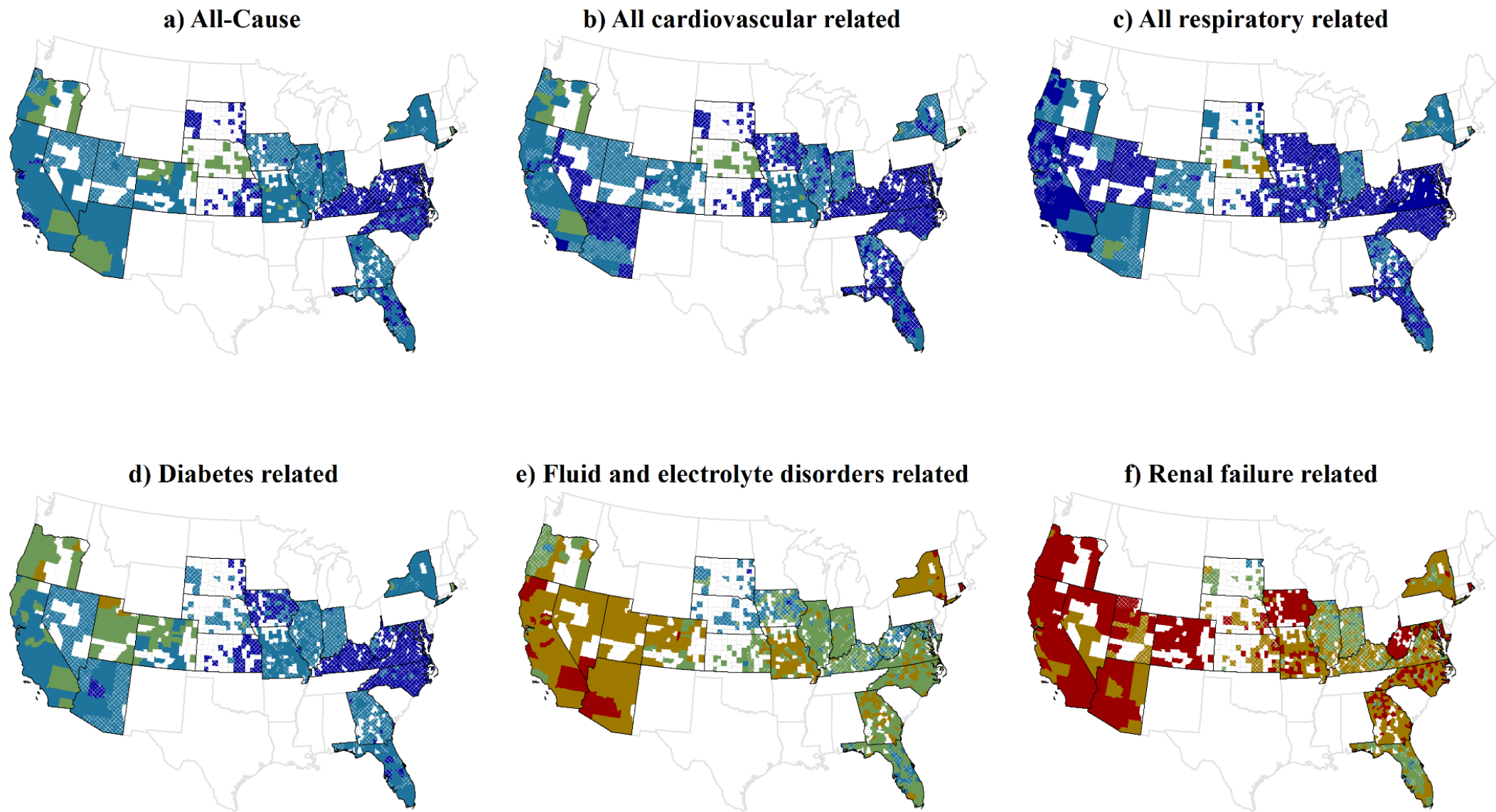


Figure S1: County-level minimum morbidity heat index (MMHI) (°F), by hospitalization outcomes



Mean Attributable Fraction (AF) above Minimum Morbidity Heat Index Value (%)

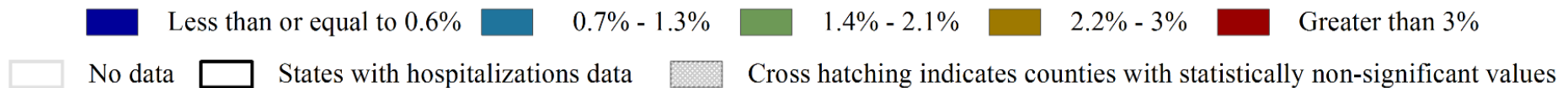


Figure S2: County-level mean attributable fraction (%) above MMHI for a cumulative 2-day lag period, by hospitalization outcomes

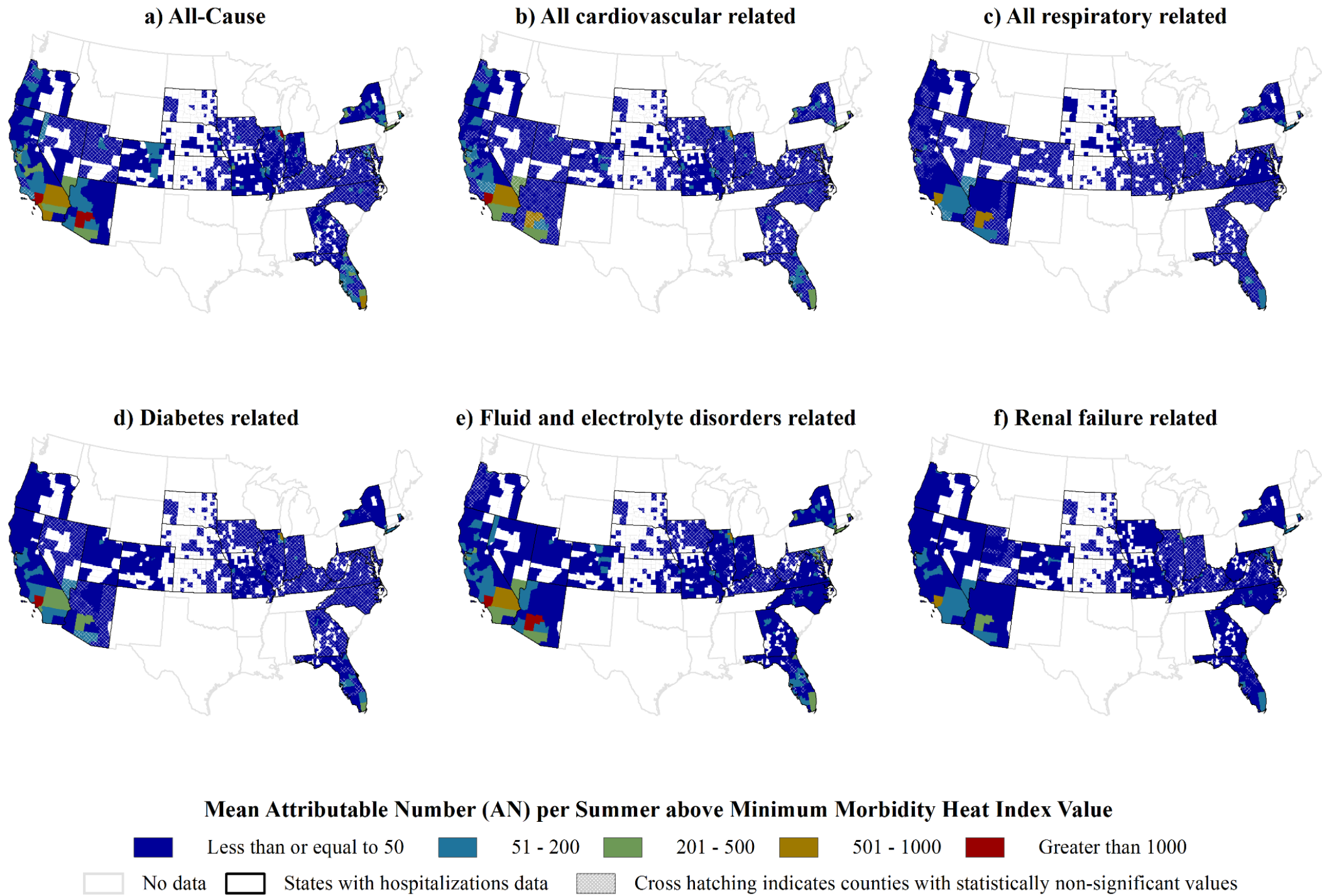


Figure S3: County-level mean attributable number per summer above MMHI for a cumulative 2-day lag period, by hospitalization outcomes

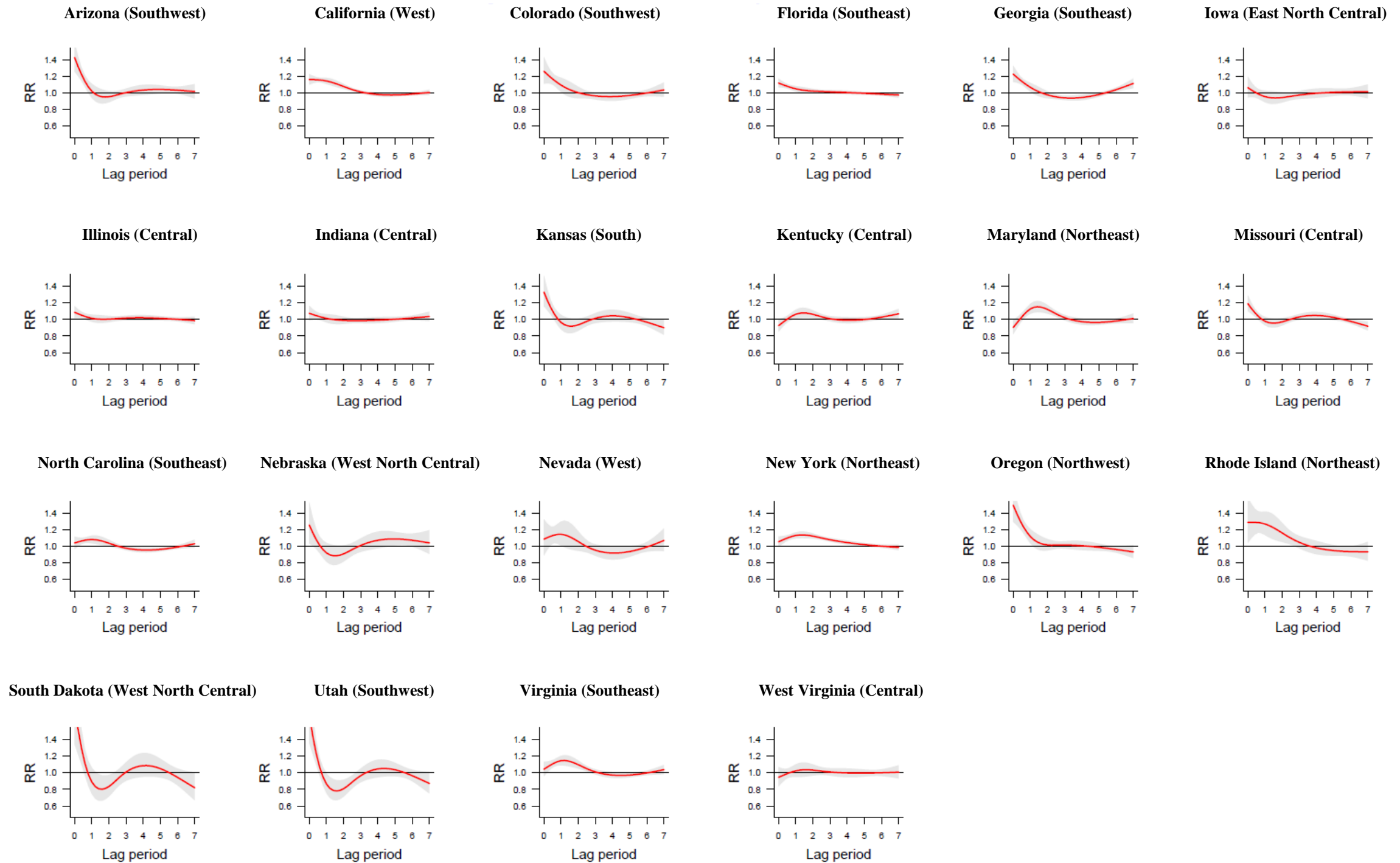


Figure S4: Lag-Response relationship between heat index and hospitalizations from all causes, by state

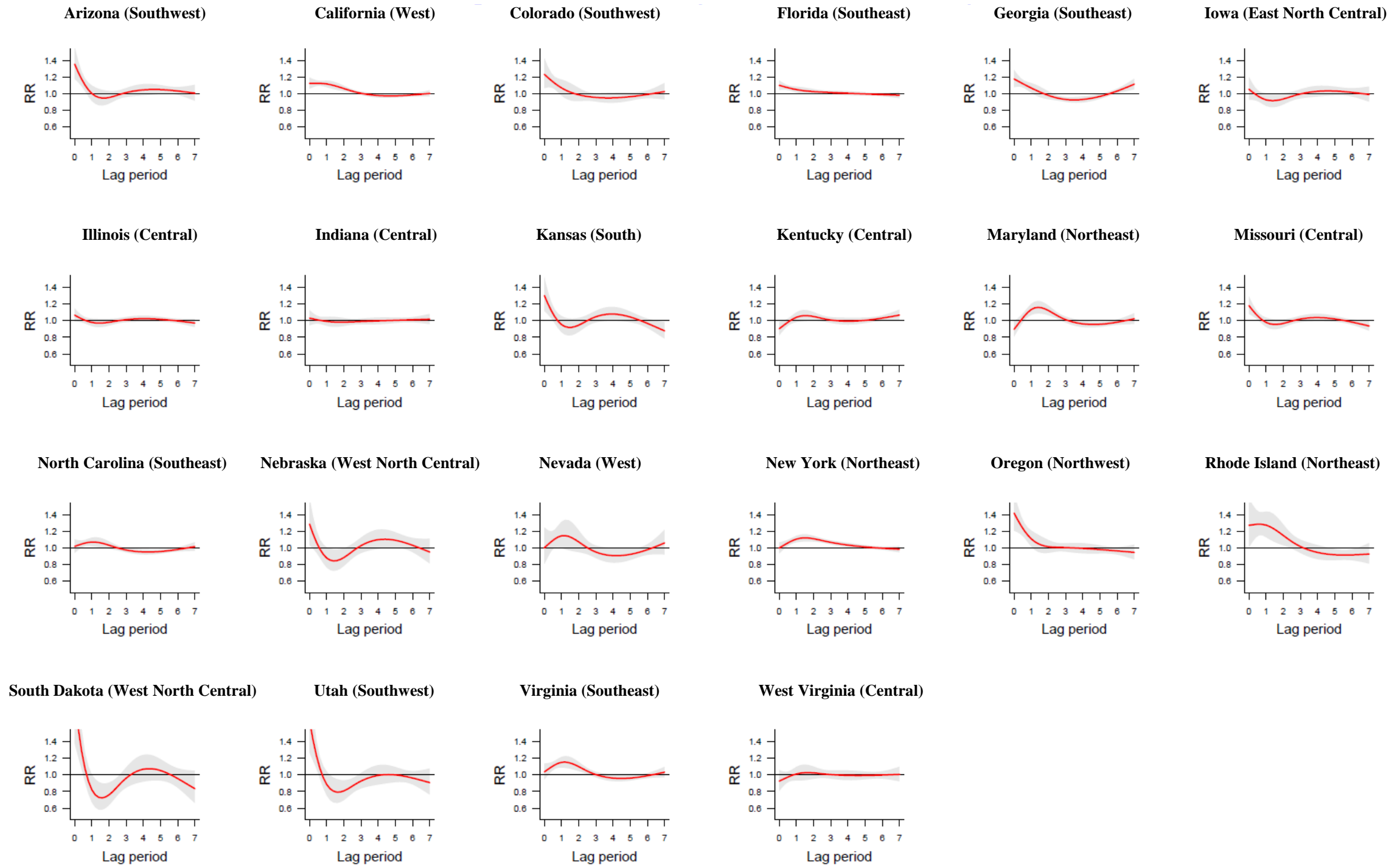


Figure S5: Lag-Response relationship between heat index and cardiovascular related hospitalizations, by state

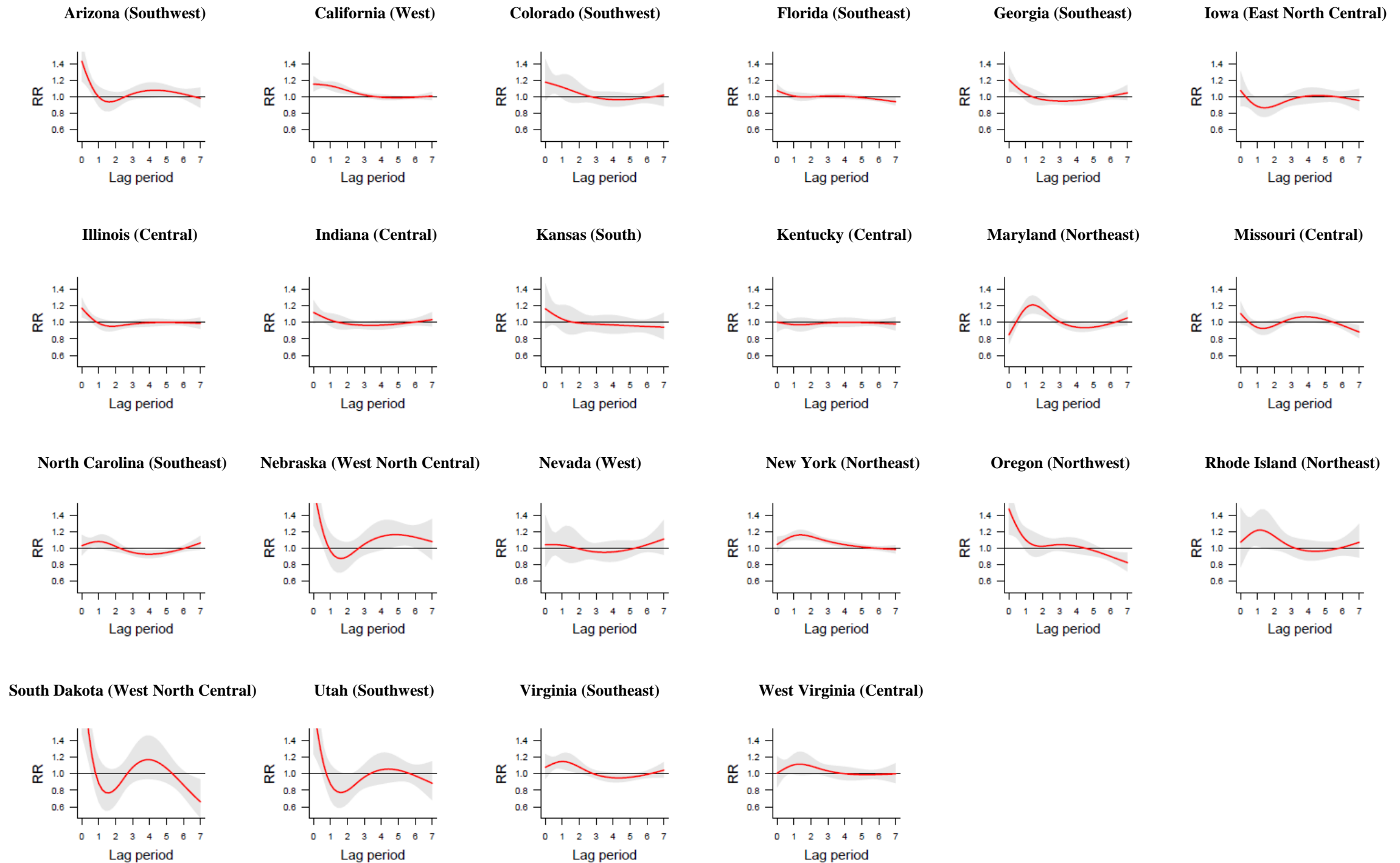


Figure S6 Lag-Response relationship between heat index and respiratory related hospitalizations, by state

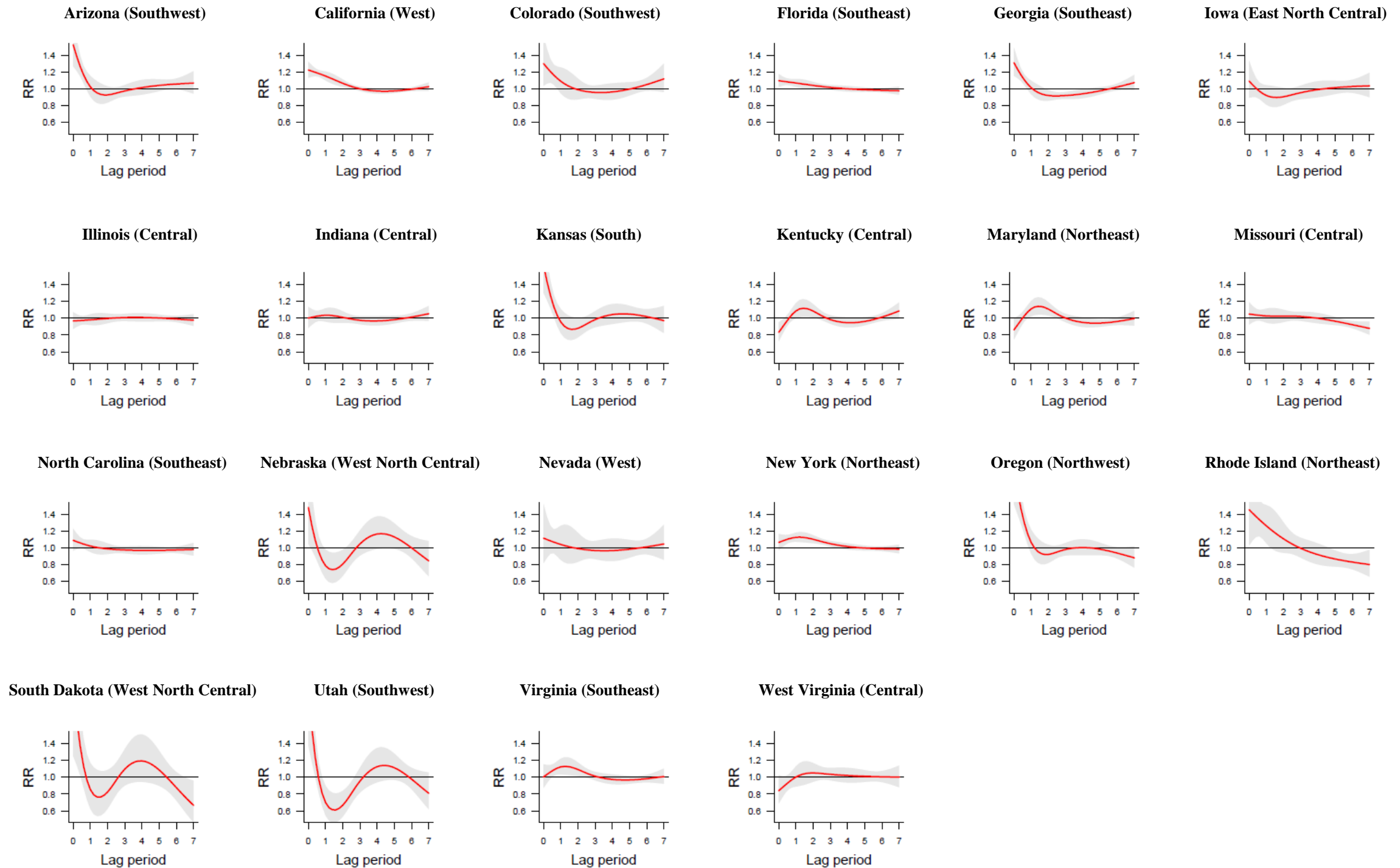


Figure S7: Lag-Response relationship between heat index and diabetes related hospitalizations, by state

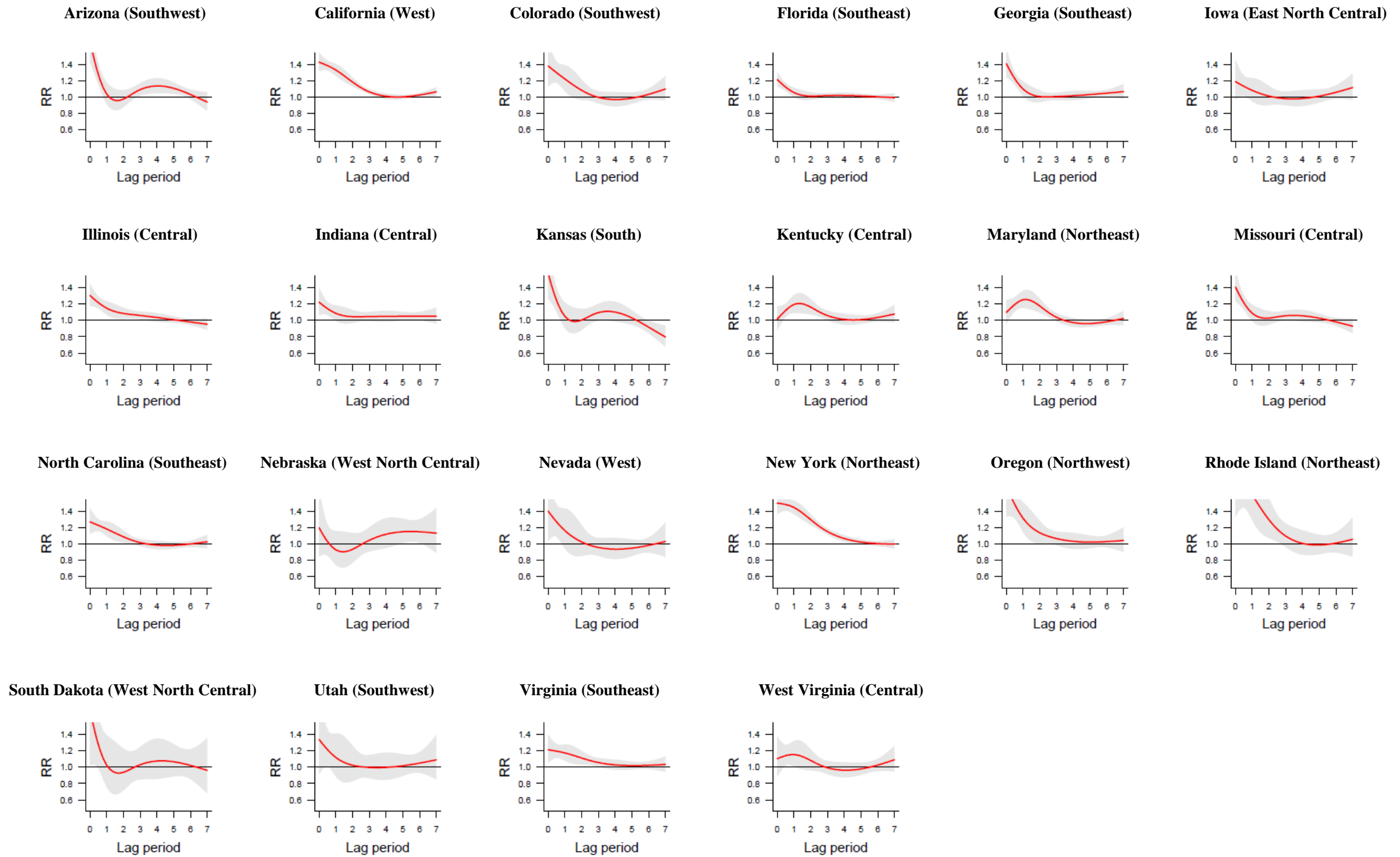


Figure S8: Lag-Response relationship between heat index and fluid and electrolyte disorders related hospitalizations, by state

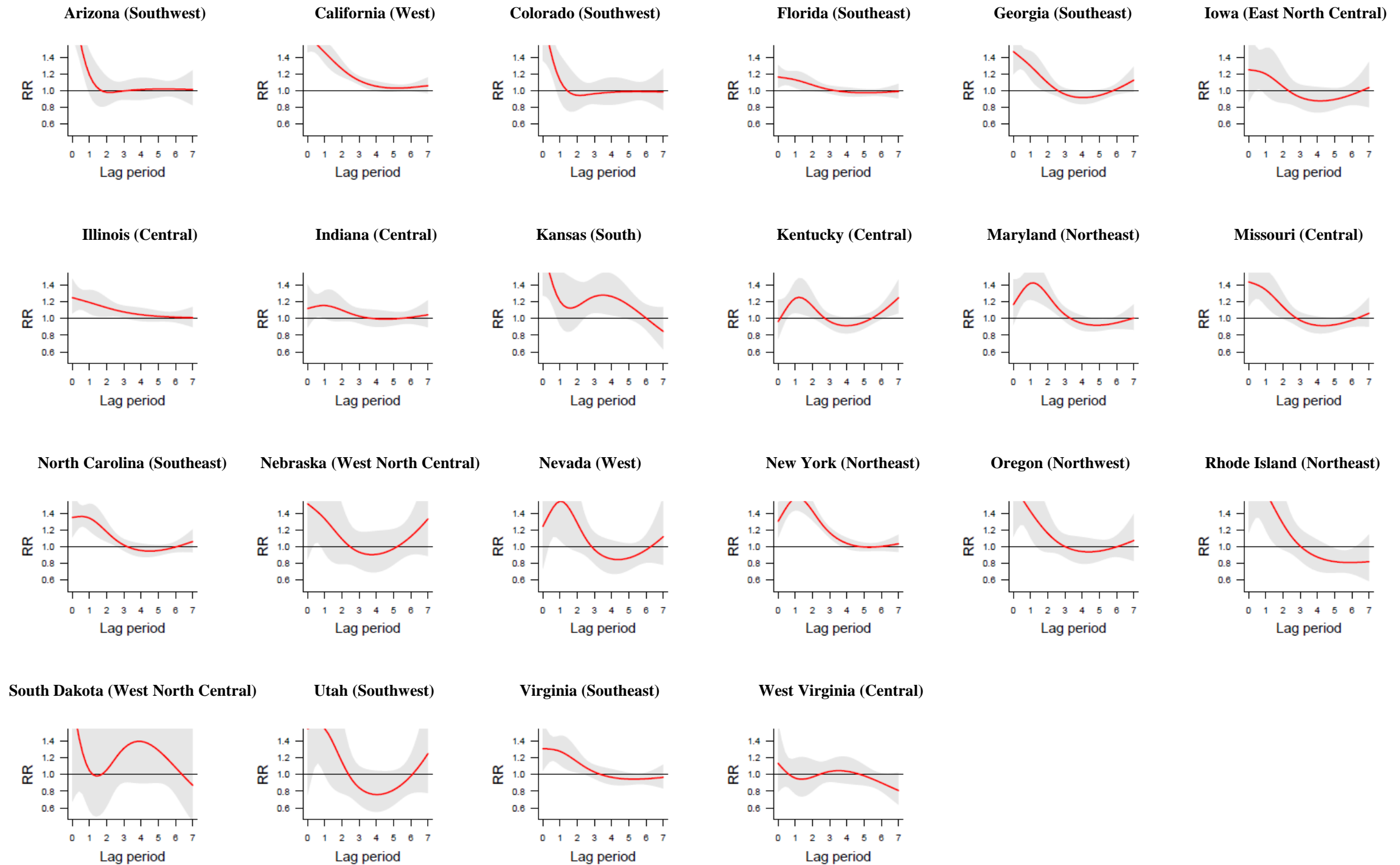


Figure S9: Lag-Response relationship between heat index and renal failure related hospitalizations, by state

Table S2: State-specific mean (95% CI) attributable fraction (AF) of hospitalizations for a cumulative lag period of 2 days, by heat index ranges

Climate region	State	Heat Index index range	Frequency by days of exposure (%)		Mean and (95CI) Attributable Fraction (AF) per Summer						
					All-Cause	All cardiovascular related	All respiratory related	Diabetes related	Fluid and electrolyte disorders related	Renal failure related	
			Person-Days	County-Days	Mean AF (95%CI) (%)	Mean AF (95%CI) (%)	Mean AF (95%CI) (%)	Mean AF (95%CI) (%)	Mean AF (95%CI) (%)	Mean AF (95%CI) (%)	
Central	Illinois	(71-75)°F	13	10	-0.00 (-0.00, -0.00)	-0.00 (-0.01, -0.00)	-0.00 (-0.01, -0.00)	-0.01 (-0.01, -0.00)	-0.01 (-0.01, -0.00)	-0.02 (-0.02, -0.01)	
		(76-80)°F	17	15	0.06 (0.03, 0.09)	0.05 (0.02, 0.08)	0.04 (0.00, 0.08)	0.10 (0.06, 0.13)	0.09 (0.05, 0.13)	0.12 (0.06, 0.18)	
		(81-85)°F	15	15	0.13 (0.08, 0.19)	0.12 (0.06, 0.18)	0.08 (0.00, 0.17)	0.21 (0.13, 0.28)	0.21 (0.13, 0.30)	0.24 (0.11, 0.36)	
		(86-90)°F	13	15	0.18 (0.11, 0.24)	0.15 (0.08, 0.22)	0.11 (0.02, 0.20)	0.25 (0.16, 0.34)	0.29 (0.20, 0.39)	0.33 (0.18, 0.48)	
		(91-95)°F	10	12	0.17 (0.11, 0.22)	0.14 (0.08, 0.19)	0.10 (0.04, 0.16)	0.19 (0.13, 0.26)	0.30 (0.23, 0.37)	0.34 (0.22, 0.45)	
		(96-100)°F	7	9	0.14 (0.10, 0.17)	0.11 (0.07, 0.14)	0.08 (0.05, 0.12)	0.12 (0.08, 0.16)	0.28 (0.23, 0.33)	0.32 (0.23, 0.40)	
		(101-105)°F	4	6	0.09 (0.07, 0.11)	0.06 (0.04, 0.09)	0.06 (0.03, 0.08)	0.05 (0.03, 0.08)	0.22 (0.19, 0.25)	0.26 (0.19, 0.32)	
		(106-110)°F	3	4	0.06 (0.04, 0.07)	0.03 (0.02, 0.05)	0.04 (0.02, 0.05)	0.02 (-0.00, 0.04)	0.19 (0.16, 0.21)	0.22 (0.16, 0.27)	
	Indiana	(71-75)°F	12	12	-0.02 (-0.02, -0.02)	-0.02 (-0.02, -0.02)	-0.03 (-0.03, -0.02)	-0.02 (-0.03, -0.01)	-0.04 (-0.04, -0.03)	-0.03 (-0.04, -0.02)	
		(76-80)°F	19	18	0.06 (0.05, 0.07)	0.06 (0.05, 0.07)	0.07 (0.06, 0.09)	0.06 (0.05, 0.08)	0.09 (0.07, 0.11)	0.08 (0.05, 0.10)	
		(81-85)°F	15	15	0.15 (0.12, 0.17)	0.14 (0.11, 0.16)	0.18 (0.14, 0.22)	0.15 (0.11, 0.19)	0.21 (0.16, 0.25)	0.19 (0.12, 0.25)	
		(86-90)°F	14	14	0.22 (0.18, 0.26)	0.19 (0.15, 0.23)	0.25 (0.19, 0.30)	0.22 (0.16, 0.27)	0.32 (0.25, 0.39)	0.31 (0.20, 0.41)	
		(91-95)°F	11	12	0.19 (0.16, 0.23)	0.16 (0.12, 0.19)	0.19 (0.14, 0.24)	0.18 (0.14, 0.22)	0.33 (0.27, 0.39)	0.36 (0.26, 0.45)	
		(96-100)°F	8	8	0.13 (0.11, 0.16)	0.09 (0.06, 0.11)	0.09 (0.06, 0.12)	0.11 (0.08, 0.14)	0.28 (0.23, 0.32)	0.34 (0.26, 0.41)	
		(101-105)°F	4	4	0.07 (0.05, 0.08)	0.03 (0.02, 0.05)	0.03 (0.01, 0.04)	0.05 (0.03, 0.06)	0.19 (0.17, 0.22)	0.26 (0.20, 0.31)	
		(106-110)°F	2	3	0.03 (0.03, 0.04)	0.01 (0.00, 0.02)	0.02 (0.01, 0.03)	0.02 (0.01, 0.03)	0.14 (0.12, 0.15)	0.18 (0.14, 0.22)	
	Kentucky	(71-75)°F	10	10	-0.03 (-0.03, -0.02)	-0.02 (-0.03, -0.02)	0.00 (-0.02, 0.03)	-0.05 (-0.06, -0.05)	-0.05 (-0.06, -0.04)	-0.07 (-0.08, -0.06)	
		(76-80)°F	16	17	0.01 (0.00, 0.01)	0.01 (0.00, 0.01)	0.03 (-0.00, 0.05)	0.01 (0.00, 0.01)	0.01 (0.01, 0.02)	0.02 (0.02, 0.03)	
		(81-85)°F	15	15	0.06 (0.04, 0.08)	0.06 (0.04, 0.07)	0.04 (0.02, 0.07)	0.08 (0.06, 0.10)	0.14 (0.10, 0.17)	0.20 (0.16, 0.25)	
		(86-90)°F	16	17	0.11 (0.07, 0.15)	0.10 (0.06, 0.13)	0.05 (0.01, 0.09)	0.12 (0.08, 0.16)	0.27 (0.21, 0.33)	0.41 (0.31, 0.50)	
		(91-95)°F	15	15	0.11 (0.06, 0.15)	0.08 (0.03, 0.12)	0.01 (-0.04, 0.07)	0.09 (0.04, 0.15)	0.34 (0.26, 0.41)	0.54 (0.41, 0.66)	
		(96-100)°F	10	9	0.05 (0.02, 0.09)	0.02 (-0.02, 0.06)	-0.02 (-0.06, 0.01)	0.03 (-0.01, 0.06)	0.27 (0.21, 0.32)	0.44 (0.34, 0.53)	
		(101-105)°F	5	5	0.02 (0.00, 0.04)	-0.00 (-0.02, 0.02)	-0.03 (-0.05, -0.01)	-0.01 (-0.03, 0.01)	0.19 (0.16, 0.23)	0.32 (0.25, 0.38)	
		(106-110)°F	3	3	0.02 (0.01, 0.03)	0.00 (-0.01, 0.02)	-0.01 (-0.03, 0.00)	-0.00 (-0.02, 0.01)	0.14 (0.12, 0.17)	0.20 (0.14, 0.25)	
	Missouri	(71-75)°F	7	7	-0.02 (-0.03, -0.02)	-0.01 (-0.02, -0.01)	-0.01 (-0.02, -0.00)	-0.01 (-0.02, -0.00)	-0.03 (-0.04, -0.02)	-0.04 (-0.05, -0.02)	
		(76-80)°F	13	13	-0.01 (-0.01, -0.01)	-0.01 (-0.01, -0.01)	-0.01 (-0.01, -0.00)	-0.01 (-0.01, -0.00)	-0.01 (-0.02, -0.01)	-0.02 (-0.02, -0.01)	
		(81-85)°F	14	14	0.05 (0.04, 0.06)	0.04 (0.03, 0.05)	0.03 (0.02, 0.05)	0.04 (0.02, 0.05)	0.06 (0.04, 0.08)	0.07 (0.04, 0.10)	
		(86-90)°F	15	15	0.14 (0.11, 0.16)	0.13 (0.10, 0.15)	0.09 (0.05, 0.13)	0.11 (0.08, 0.15)	0.16 (0.11, 0.21)	0.18 (0.10, 0.26)	
		(91-95)°F	13	13	0.20 (0.16, 0.24)	0.19 (0.15, 0.22)	0.12 (0.07, 0.17)	0.18 (0.13, 0.22)	0.27 (0.20, 0.34)	0.31 (0.20, 0.42)	
		(96-100)°F	11	11	0.22 (0.18, 0.26)	0.20 (0.16, 0.24)	0.12 (0.06, 0.16)	0.21 (0.16, 0.25)	0.38 (0.31, 0.44)	0.45 (0.34, 0.56)	
		(101-105)°F	9	9	0.19 (0.16, 0.22)	0.16 (0.13, 0.20)	0.07 (0.04, 0.11)	0.19 (0.15, 0.22)	0.42 (0.37, 0.48)	0.53 (0.45, 0.62)	
		(106-110)°F	7	6	0.16 (0.13, 0.19)	0.13 (0.10, 0.16)	0.04 (0.01, 0.06)	0.16 (0.13, 0.19)	0.45 (0.40, 0.50)	0.62 (0.52, 0.71)	
	West Virginia	(71-75)°F	16	16	-0.00 (-0.01, 0.01)	-0.00 (-0.01, 0.01)	-0.01 (-0.03, 0.02)	0.01 (-0.01, 0.02)	-0.00 (-0.02, 0.01)	-0.02 (-0.04, 0.01)	
		(76-80)°F	21	22	0.12 (0.09, 0.14)	0.10 (0.07, 0.13)	0.07 (0.01, 0.12)	0.19 (0.15, 0.22)	0.16 (0.11, 0.22)	0.53 (0.46, 0.61)	
		(81-85)°F	16	16	0.13 (0.09, 0.17)	0.11 (0.07, 0.15)	0.06 (0.01, 0.12)	0.23 (0.18, 0.28)	0.27 (0.19, 0.34)	0.85 (0.75, 0.96)	
		(86-90)°F	15	15	0.10 (0.04, 0.15)	0.06 (0.01, 0.11)	0.03 (-0.03, 0.10)	0.17 (0.11, 0.23)	0.35 (0.25, 0.45)	1.05 (0.90, 1.20)	
		(91-95)°F	10	9	0.01 (-0.03, 0.05)	-0.02 (-0.06, 0.03)	0.00 (-0.04, 0.05)	0.02 (-0.03, 0.07)	0.27 (0.20, 0.35)	0.73 (0.60, 0.84)	
		(96-100)°F	4	4	-0.03 (-0.05, -0.00)	-0.04 (-0.06, -0.02)	-0.00 (-0.03, 0.02)	-0.05 (-0.08, -0.03)	0.15 (0.11, 0.19)	0.35 (0.27, 0.43)	
		(101-105)°F	2	1	-0.00 (-0.01, 0.01)	-0.01 (-0.02, -0.00)	0.02 (0.01, 0.03)	-0.02 (-0.03, -0.01)	0.08 (0.06, 0.10)	0.14 (0.09, 0.18)	
		(106-110)°F	1	0	0.01 (0.01, 0.01)	0.01 (0.00, 0.01)	0.02 (0.01, 0.02)	0.01 (0.00, 0.01)	0.03 (0.02, 0.04)	0.04 (0.01, 0.06)	
	East North Central	Iowa	(71-75)°F	11	11	-0.02 (-0.02, -0.01)	-0.02 (-0.02, -0.01)	-0.00 (-0.01, 0.00)	0.00 (-0.00, 0.01)	-0.02 (-0.03, -0.01)	-0.05 (-0.06, -0.04)
			(76-80)°F	15	16	0.05 (0.04, 0.06)	0.05 (0.04, 0.05)	0.02 (0.01, 0.03)	0.02 (0.01, 0.04)	0.06 (0.04, 0.07)	0.16 (0.14, 0.18)
			(81-85)°F	16	16	0.16 (0.13, 0.19)	0.14 (0.11, 0.16)	0.08 (0.03, 0.12)	0.11 (0.07, 0.15)	0.17 (0.12, 0.22)	0.51 (0.43, 0.58)
			(86-90)°F	14	14	0.23 (0.18, 0.27)	0.18 (0.14, 0.23)	0.11 (0.05, 0.18)	0.18 (0.12, 0.23)	0.25 (0.17, 0.33)	0.72 (0.60, 0.82)
			(91-95)°F	10	10	0.17 (0.13, 0.20)	0.13 (0.10, 0.17)	0.08 (0.03, 0.13)	0.15 (0.11, 0.20)	0.24 (0.17, 0.30)	0.68 (0.57, 0.77)
			(96-100)°F	8	7	0.11 (0.08, 0.14)	0.08 (0.05, 0.11)	0.05 (0.01, 0.09)	0.11 (0.08, 0.15)	0.21 (0.15, 0.27)	0.56 (0.47, 0.65)
			(101-105)°F	5	5	0.05 (0.03, 0.07)	0.02 (0.00, 0.04)	0.01 (-0.02, 0.03)	0.06 (0.04, 0.09)	0.17 (0.13, 0.21)	0.39 (0.32, 0.45)
			(106-110)°F	3	3	0.02 (0.00, 0.03)	0.00 (-0.01, 0.02)	-0.02 (-0.03, -0.00)	0.02 (0.00, 0.04)	0.13 (0.10, 0.15)	0.27 (0.21, 0.32)
Northeast	Maryland	(71-75)°F	12	13	0.00 (-0.02, 0.03)	0.01 (-0.03, 0.06)	0.04 (-0.02, 0.10)	-0.02 (-0.03, -0.00)	-0.03 (-0.04, -0.02)	-0.07 (-0.08, -0.05)	
		(76-80)°F	17	18	0.01 (-0.01, 0.03)	0.02 (-0.03, 0.06)	0.04 (-0.01, 0.10)	0.03 (0.01, 0.05)	0.06 (0.04, 0.08)	0.14 (0.11, 0.17)	
		(81-85)°F	17	17	0.05 (0.01, 0.09)	0.04 (-0.00, 0.08)	0.04 (-0.02, 0.09)	0.09 (0.02, 0.15)	0.21 (0.13, 0.29)	0.49 (0.36, 0.60)	
		(86-90)°F	16	15	0.08 (0.02, 0.14)	0.06 (0.01, 0.12)	0.05 (-0.03, 0.12)	0.11 (0.01, 0.19)	0.34 (0.23, 0.46)	0.75 (0.56, 0.91)	
		(91-95)°F	13	12	0.10 (0.03, 0.16)	0.07 (0.01, 0.13)	0.08 (-0.01, 0.15)	0.07 (-0.02, 0.16)	0.43 (0.31, 0.54)	0.88 (0.69, 1.05)	
		(96-100)°F	7	6	0.06 (0.03, 0.10)	0.04 (0.01, 0.08)	0.07 (0.02, 0.11)	0.01 (-0.04, 0.05)	0.30 (0.24, 0.36)	0.58 (0.47, 0.68)	
		(101-105)°F	3	3	0.04 (0.02, 0.06)	0.03 (0.01, 0.05)	0.04 (0.02, 0.06)	0.01 (-0.02, 0.03)	0.19 (0.16, 0.23)	0.37 (0.31, 0.44)	
		(106-110)°F	1	1	0.02 (0.01, 0.02)	0.02 (0.01, 0.02)	0.01 (0.00, 0.02)	0.01 (0.00, 0.02)	0.08 (0.07, 0.10)	0.15 (0.13, 0.18)	
	New York	(71-75)°F	19	22	0.05 (0.04, 0.07)	0.05 (0.03, 0.07)	0.06 (0.02, 0.11)	0.06 (0.05, 0.08)	0.13 (0.10, 0.16)	0.09 (0.06, 0.12)	
		(76-80)°F	20	20	0.14 (0.10, 0.18)	0.12 (0.09, 0.17)	0.15 (0.10, 0.20)	0.18 (0.14, 0.22)	0.36 (0.30, 0.43)	0.29 (0.20, 0.38)	

Climate region	State	Heat Index index range	Frequency by days of exposure (%)		Mean and (95CI) Attributable Fraction (AF) per Summer						
					All-Cause	All cardiovascular related	All respiratory related	Diabetes related	Fluid and electrolyte disorders related	Renal failure related	
			Person-Days	County-Days	Mean AF (95%CI) (%)	Mean AF (95%CI) (%)	Mean AF (95%CI) (%)	Mean AF (95%CI) (%)	Mean AF (95%CI) (%)	Mean AF (95%CI) (%)	
	Rhode Island	(81-85)°F	14	11	0.17 (0.12, 0.22)	0.14 (0.09, 0.19)	0.18 (0.13, 0.23)	0.22 (0.16, 0.28)	0.47 (0.39, 0.54)	0.42 (0.32, 0.52)	
		(86-90)°F	11	8	0.19 (0.15, 0.24)	0.15 (0.10, 0.20)	0.22 (0.18, 0.26)	0.23 (0.18, 0.29)	0.57 (0.50, 0.64)	0.56 (0.46, 0.67)	
		(91-95)°F	7	5	0.16 (0.13, 0.19)	0.11 (0.08, 0.15)	0.20 (0.18, 0.22)	0.17 (0.14, 0.21)	0.49 (0.44, 0.53)	0.50 (0.43, 0.57)	
		(96-100)°F	3	2	0.11 (0.09, 0.13)	0.07 (0.05, 0.09)	0.14 (0.12, 0.15)	0.11 (0.09, 0.13)	0.35 (0.33, 0.38)	0.39 (0.34, 0.44)	
		(101-105)°F	1	1	0.05 (0.04, 0.05)	0.03 (0.02, 0.04)	0.05 (0.05, 0.06)	0.04 (0.04, 0.05)	0.16 (0.15, 0.17)	0.19 (0.17, 0.21)	
		(106-110)°F	0	0	0.02 (0.02, 0.03)	0.02 (0.01, 0.02)	0.02 (0.02, 0.02)	0.02 (0.02, 0.03)	0.09 (0.08, 0.09)	0.11 (0.09, 0.12)	
		(71-75)°F	20	21	0.07 (-0.02, 0.16)	0.06 (-0.03, 0.16)	0.10 (-0.03, 0.24)	0.11 (-0.02, 0.23)	0.27 (0.10, 0.43)	0.44 (0.26, 0.63)	
		(76-80)°F	22	22	0.21 (-0.04, 0.45)	0.18 (-0.07, 0.43)	0.25 (-0.12, 0.61)	0.30 (-0.05, 0.64)	0.76 (0.32, 1.19)	1.28 (0.71, 1.83)	
		(81-85)°F	11	10	0.22 (0.04, 0.40)	0.20 (0.01, 0.39)	0.22 (-0.06, 0.49)	0.29 (0.02, 0.55)	0.72 (0.38, 1.05)	1.18 (0.71, 1.64)	
		(86-90)°F	9	9	0.30 (0.13, 0.48)	0.28 (0.09, 0.47)	0.27 (0.02, 0.52)	0.38 (0.12, 0.62)	0.88 (0.55, 1.19)	1.28 (0.84, 1.71)	
		(91-95)°F	6	5	0.29 (0.17, 0.40)	0.27 (0.15, 0.39)	0.24 (0.07, 0.39)	0.33 (0.16, 0.50)	0.74 (0.54, 0.94)	0.93 (0.62, 1.22)	
(96-100)°F	2	2	0.17 (0.11, 0.22)	0.16 (0.10, 0.22)	0.13 (0.05, 0.21)	0.19 (0.11, 0.27)	0.41 (0.31, 0.51)	0.52 (0.36, 0.67)			
(101-105)°F	1	1	0.06 (0.04, 0.08)	0.06 (0.04, 0.08)	0.04 (0.01, 0.07)	0.08 (0.05, 0.11)	0.15 (0.12, 0.18)	0.23 (0.16, 0.29)			
(106-110)°F	0	0	0.03 (0.02, 0.04)	0.03 (0.01, 0.04)	0.02 (-0.00, 0.04)	0.03 (0.01, 0.05)	0.08 (0.05, 0.10)	0.09 (0.06, 0.13)			
Northwest	Oregon	(71-75)°F	19	15	0.11 (0.05, 0.17)	0.12 (0.06, 0.18)	0.08 (0.02, 0.14)	0.24 (0.16, 0.32)	0.11 (0.01, 0.21)	0.56 (0.41, 0.71)	
		(76-80)°F	18	16	0.18 (0.08, 0.27)	0.20 (0.10, 0.30)	0.04 (-0.02, 0.11)	0.40 (0.28, 0.52)	0.21 (0.04, 0.36)	0.98 (0.72, 1.21)	
		(81-85)°F	14	14	0.35 (0.26, 0.43)	0.35 (0.26, 0.43)	0.19 (0.12, 0.25)	0.50 (0.39, 0.59)	0.50 (0.36, 0.63)	1.06 (0.84, 1.25)	
		(86-90)°F	6	7	0.27 (0.23, 0.31)	0.26 (0.22, 0.30)	0.20 (0.16, 0.24)	0.32 (0.27, 0.36)	0.44 (0.37, 0.51)	0.64 (0.53, 0.74)	
		(91-95)°F	2	3	0.15 (0.13, 0.16)	0.13 (0.12, 0.15)	0.13 (0.11, 0.15)	0.17 (0.15, 0.19)	0.26 (0.23, 0.29)	0.34 (0.28, 0.39)	
		(96-100)°F	1	1	0.05 (0.05, 0.06)	0.05 (0.04, 0.05)	0.05 (0.04, 0.06)	0.07 (0.06, 0.07)	0.10 (0.09, 0.11)	0.12 (0.10, 0.14)	
		(101-105)°F	0	0	0.02 (0.02, 0.02)	0.02 (0.01, 0.02)	0.03 (0.02, 0.03)	0.04 (0.03, 0.04)	0.05 (0.04, 0.06)	0.08 (0.05, 0.09)	
		(106-110)°F	0	0	0.00 (0.00, 0.01)	0.00 (0.00, 0.01)	0.01 (0.00, 0.01)	0.01 (0.01, 0.01)	0.01 (0.01, 0.02)	0.02 (0.01, 0.03)	
South	Kansas	(71-75)°F	7	7	-0.05 (-0.07, -0.03)	-0.05 (-0.07, -0.04)	0.00 (-0.02, 0.02)	-0.02 (-0.04, 0.00)	-0.04 (-0.09, -0.00)	-0.15 (-0.19, -0.11)	
		(76-80)°F	11	11	-0.02 (-0.05, 0.01)	-0.02 (-0.03, -0.01)	-0.00 (-0.01, 0.01)	-0.01 (-0.02, 0.00)	-0.00 (-0.06, 0.05)	-0.06 (-0.08, -0.04)	
		(81-85)°F	14	14	0.02 (-0.01, 0.05)	0.02 (0.01, 0.03)	0.01 (-0.01, 0.03)	0.01 (-0.00, 0.03)	0.06 (-0.00, 0.12)	0.08 (0.05, 0.11)	
		(86-90)°F	14	15	0.04 (0.00, 0.08)	0.04 (0.00, 0.08)	0.04 (-0.01, 0.09)	0.04 (-0.00, 0.09)	0.11 (0.05, 0.17)	0.19 (0.10, 0.29)	
		(91-95)°F	14	14	0.05 (0.01, 0.09)	0.05 (-0.02, 0.11)	0.08 (-0.01, 0.17)	0.07 (-0.01, 0.15)	0.16 (0.09, 0.23)	0.28 (0.11, 0.46)	
		(96-100)°F	13	13	0.08 (0.03, 0.13)	0.07 (0.00, 0.14)	0.13 (0.04, 0.21)	0.08 (-0.01, 0.16)	0.28 (0.20, 0.36)	0.39 (0.18, 0.59)	
		(101-105)°F	10	11	0.13 (0.08, 0.17)	0.11 (0.05, 0.17)	0.15 (0.09, 0.22)	0.07 (0.00, 0.14)	0.43 (0.35, 0.51)	0.48 (0.29, 0.67)	
		(106-110)°F	8	7	0.15 (0.10, 0.19)	0.13 (0.08, 0.18)	0.15 (0.10, 0.20)	0.09 (0.03, 0.14)	0.49 (0.41, 0.57)	0.66 (0.46, 0.84)	
Southeast	Florida	(71-75)°F	0	1	-0.00 (-0.00, 0.00)	0.00 (-0.00, 0.00)	0.00 (-0.00, 0.01)	-0.00 (-0.01, 0.00)	-0.01 (-0.01, -0.01)	-0.01 (-0.02, -0.01)	
		(76-80)°F	2	2	-0.01 (-0.02, -0.01)	-0.00 (-0.01, 0.00)	0.00 (-0.01, 0.02)	-0.01 (-0.02, -0.00)	-0.04 (-0.05, -0.03)	-0.06 (-0.07, -0.04)	
		(81-85)°F	4	4	-0.03 (-0.04, -0.02)	-0.02 (-0.02, -0.01)	-0.01 (-0.03, 0.00)	-0.03 (-0.04, -0.01)	-0.07 (-0.09, -0.06)	-0.09 (-0.11, -0.08)	
		(86-90)°F	11	12	-0.04 (-0.05, -0.03)	-0.03 (-0.04, -0.01)	-0.03 (-0.05, -0.02)	-0.04 (-0.05, -0.02)	-0.10 (-0.11, -0.08)	-0.13 (-0.15, -0.11)	
		(91-95)°F	27	25	0.04 (0.02, 0.06)	0.03 (0.01, 0.04)	0.05 (0.03, 0.07)	0.04 (0.02, 0.06)	0.09 (0.06, 0.11)	0.11 (0.07, 0.15)	
		(96-100)°F	33	31	0.30 (0.23, 0.37)	0.22 (0.15, 0.29)	0.30 (0.21, 0.39)	0.29 (0.21, 0.37)	0.58 (0.47, 0.69)	0.72 (0.57, 0.87)	
		(101-105)°F	19	19	0.34 (0.29, 0.39)	0.28 (0.22, 0.33)	0.21 (0.16, 0.26)	0.36 (0.31, 0.40)	0.64 (0.56, 0.71)	0.84 (0.72, 0.97)	
		(106-110)°F	4	5	0.10 (0.08, 0.11)	0.08 (0.07, 0.09)	0.05 (0.04, 0.06)	0.11 (0.10, 0.12)	0.16 (0.14, 0.18)	0.23 (0.18, 0.26)	
		Georgia	(71-75)°F	3	3	-0.01 (-0.02, -0.01)	-0.01 (-0.01, 0.00)	0.00 (-0.01, 0.01)	-0.01 (-0.02, -0.00)	-0.02 (-0.03, -0.02)	-0.06 (-0.08, -0.05)
			(76-80)°F	8	7	-0.02 (-0.03, -0.01)	-0.01 (-0.03, 0.01)	-0.01 (-0.02, 0.00)	-0.02 (-0.04, -0.01)	-0.05 (-0.06, -0.04)	-0.10 (-0.11, -0.08)
	(81-85)°F		12	11	-0.01 (-0.02, 0.00)	-0.00 (-0.02, 0.02)	-0.00 (-0.01, 0.00)	-0.01 (-0.02, -0.01)	-0.02 (-0.03, -0.02)	-0.04 (-0.04, -0.03)	
	(86-90)°F		20	18	0.04 (0.02, 0.06)	0.03 (0.01, 0.04)	0.05 (0.03, 0.07)	0.06 (0.04, 0.08)	0.12 (0.09, 0.15)	0.13 (0.08, 0.17)	
	(91-95)°F		22	22	0.14 (0.11, 0.18)	0.09 (0.07, 0.12)	0.16 (0.10, 0.21)	0.19 (0.14, 0.23)	0.41 (0.33, 0.48)	0.44 (0.33, 0.55)	
	(96-100)°F		18	20	0.25 (0.21, 0.28)	0.17 (0.14, 0.21)	0.22 (0.17, 0.27)	0.27 (0.22, 0.31)	0.62 (0.55, 0.69)	0.85 (0.74, 0.97)	
	(101-105)°F		10	12	0.23 (0.21, 0.25)	0.18 (0.15, 0.20)	0.17 (0.14, 0.19)	0.21 (0.19, 0.23)	0.52 (0.47, 0.56)	0.83 (0.75, 0.91)	
	(106-110)°F		3	4	0.10 (0.09, 0.11)	0.08 (0.07, 0.09)	0.06 (0.05, 0.07)	0.09 (0.08, 0.10)	0.22 (0.20, 0.24)	0.36 (0.31, 0.40)	
	North Carolina		(71-75)°F	8	10	-0.00 (-0.01, 0.00)	0.01 (-0.00, 0.02)	0.00 (-0.02, 0.02)	-0.02 (-0.03, -0.00)	-0.05 (-0.06, -0.04)	-0.09 (-0.10, -0.08)
			(76-80)°F	12	14	0.00 (-0.01, 0.01)	0.01 (-0.00, 0.02)	0.02 (-0.01, 0.05)	-0.01 (-0.02, 0.00)	-0.02 (-0.04, -0.01)	-0.05 (-0.07, -0.04)
		(81-85)°F	14	14	0.02 (0.01, 0.04)	0.02 (0.00, 0.03)	0.03 (-0.00, 0.07)	0.02 (0.01, 0.03)	0.07 (0.05, 0.09)	0.11 (0.09, 0.13)	
		(86-90)°F	18	17	0.07 (0.05, 0.09)	0.04 (0.02, 0.06)	0.04 (0.01, 0.07)	0.08 (0.05, 0.10)	0.23 (0.19, 0.27)	0.36 (0.31, 0.41)	
		(91-95)°F	19	17	0.12 (0.09, 0.16)	0.08 (0.04, 0.11)	0.03 (-0.00, 0.05)	0.13 (0.09, 0.18)	0.43 (0.36, 0.50)	0.66 (0.56, 0.75)	
		(96-100)°F	14	12	0.13 (0.10, 0.15)	0.08 (0.05, 0.11)	0.01 (-0.01, 0.03)	0.12 (0.08, 0.15)	0.51 (0.45, 0.56)	0.76 (0.67, 0.84)	
		(101-105)°F	7	6	0.09 (0.07, 0.10)	0.06 (0.04, 0.08)	0.01 (-0.00, 0.02)	0.07 (0.05, 0.09)	0.38 (0.34, 0.40)	0.57 (0.51, 0.63)	
		(106-110)°F	2	2	0.05 (0.04, 0.05)	0.04 (0.03, 0.04)	0.02 (0.01, 0.03)	0.04 (0.03, 0.05)	0.18 (0.16, 0.20)	0.30 (0.26, 0.33)	
	Virginia	(71-75)°F	11	12	-0.00 (-0.01, 0.01)	0.01 (-0.00, 0.02)	0.09 (0.06, 0.13)	-0.01 (-0.03, 0.00)	-0.05 (-0.06, -0.04)	-0.05 (-0.06, -0.04)	
		(76-80)°F	16	17	0.01 (0.00, 0.02)	0.01 (-0.00, 0.03)	0.12 (0.07, 0.17)	0.01 (-0.01, 0.02)	0.04 (0.03, 0.05)	0.04 (0.03, 0.05)	
		(81-85)°F	16	16	0.04 (0.02, 0.06)	0.03 (0.01, 0.05)	0.07 (0.04, 0.10)	0.03 (0.01, 0.05)	0.18 (0.15, 0.21)	0.20 (0.16, 0.23)	
		(86-90)°F	17	17	0.09 (0.05, 0.12)	0.06 (0.03, 0.09)	0.04 (0.03, 0.05)	0.05 (0.02, 0.09)	0.36 (0.30, 0.42)	0.41 (0.32, 0.48)	
(91-95)°F		14	13	0.10 (0.06, 0.13)	0.06 (0.03, 0.10)	0.04 (0.03, 0.05)	0.08 (0.04, 0.11)	0.43 (0.36, 0.49)	0.50 (0.41, 0.58)		

Climate region	State	Heat Index index range	Frequency by days of exposure (%)		Mean and (95CI) Attributable Fraction (AF) per Summer							
					All-Cause	All cardiovascular related	All respiratory related	Diabetes related	Fluid and electrolyte disorders related	Renal failure related		
			Person-Days	County-Days	Mean AF (95%CI) (%)	Mean AF (95%CI) (%)	Mean AF (95%CI) (%)	Mean AF (95%CI) (%)	Mean AF (95%CI) (%)	Mean AF (95%CI) (%)		
Southwest	Arizona	(96-100)°F	10	9	0.09 (0.06, 0.12)	0.05 (0.02, 0.08)	0.07 (0.06, 0.09)	0.09 (0.06, 0.12)	0.41 (0.35, 0.45)	0.49 (0.42, 0.56)		
		(101-105)°F	5	4	0.07 (0.06, 0.09)	0.04 (0.03, 0.06)	0.09 (0.08, 0.10)	0.08 (0.07, 0.10)	0.28 (0.25, 0.30)	0.35 (0.30, 0.39)		
		(106-110)°F	2	1	0.05 (0.05, 0.06)	0.05 (0.04, 0.05)	0.06 (0.05, 0.06)	0.05 (0.04, 0.05)	0.12 (0.11, 0.14)	0.18 (0.15, 0.20)		
		(71-75)°F	1	4	-0.02 (-0.02, -0.01)	-0.02 (-0.03, -0.01)	-0.00 (-0.01, 0.01)	-0.02 (-0.03, -0.01)	-0.03 (-0.04, -0.02)	-0.03 (-0.05, -0.02)		
		(76-80)°F	5	11	-0.06 (-0.09, -0.03)	-0.07 (-0.10, -0.03)	0.01 (-0.05, 0.06)	-0.07 (-0.13, -0.02)	-0.10 (-0.15, -0.06)	-0.11 (-0.19, -0.04)		
		(81-85)°F	9	21	-0.04 (-0.07, -0.01)	-0.05 (-0.09, -0.02)	0.01 (-0.04, 0.06)	-0.06 (-0.11, -0.01)	-0.06 (-0.11, -0.02)	-0.07 (-0.13, -0.01)		
		(86-90)°F	14	19	-0.01 (-0.05, 0.03)	-0.02 (-0.06, 0.02)	0.02 (-0.03, 0.07)	-0.03 (-0.09, 0.02)	-0.02 (-0.07, 0.04)	-0.03 (-0.10, 0.05)		
		(91-95)°F	19	16	0.13 (0.08, 0.18)	0.09 (0.03, 0.15)	0.11 (0.04, 0.19)	0.09 (0.03, 0.16)	0.22 (0.14, 0.30)	0.24 (0.12, 0.35)		
		(96-100)°F	18	12	0.28 (0.18, 0.39)	0.18 (0.07, 0.29)	0.28 (0.14, 0.41)	0.23 (0.11, 0.36)	0.55 (0.39, 0.71)	0.61 (0.37, 0.83)		
		(101-105)°F	20	9	0.44 (0.20, 0.67)	0.25 (0.00, 0.49)	0.51 (0.21, 0.81)	0.38 (0.08, 0.67)	0.96 (0.62, 1.31)	1.17 (0.64, 1.65)		
	(106-110)°F	11	4	0.27 (0.12, 0.43)	0.10 (-0.07, 0.28)	0.31 (0.14, 0.49)	0.17 (-0.01, 0.35)	0.79 (0.55, 1.02)	1.12 (0.71, 1.52)			
	Colorado	(71-75)°F	12	14	-0.00 (-0.01, 0.01)	-0.00 (-0.01, 0.01)	-0.00 (-0.01, 0.01)	-0.00 (-0.02, 0.01)	-0.01 (-0.03, 0.00)	-0.03 (-0.05, -0.01)		
		(76-80)°F	22	21	0.18 (0.14, 0.23)	0.14 (0.09, 0.19)	0.12 (0.05, 0.20)	0.17 (0.11, 0.24)	0.31 (0.23, 0.39)	0.54 (0.43, 0.65)		
		(81-85)°F	26	19	0.43 (0.33, 0.53)	0.32 (0.22, 0.43)	0.28 (0.15, 0.42)	0.46 (0.32, 0.58)	0.79 (0.63, 0.95)	1.40 (1.14, 1.67)		
		(86-90)°F	17	11	0.37 (0.29, 0.45)	0.25 (0.17, 0.34)	0.23 (0.12, 0.32)	0.46 (0.35, 0.56)	0.84 (0.69, 0.97)	1.37 (1.11, 1.62)		
		(91-95)°F	5	5	0.15 (0.12, 0.19)	0.11 (0.07, 0.14)	0.11 (0.07, 0.15)	0.21 (0.16, 0.26)	0.36 (0.30, 0.42)	0.51 (0.39, 0.63)		
		(96-100)°F	0	1	0.03 (0.02, 0.03)	0.02 (0.01, 0.03)	0.03 (0.02, 0.03)	0.04 (0.03, 0.05)	0.05 (0.04, 0.06)	0.06 (0.04, 0.09)		
		(101-105)°F	0	0	0.00 (0.00, 0.00)	0.00 (0.00, 0.00)	0.00 (0.00, 0.00)	0.00 (0.00, 0.00)	0.00 (0.00, 0.00)	0.00 (0.00, 0.00)		
		(106-110)°F	0	0	0.00 (0.00, 0.00)	0.00 (0.00, 0.00)	0.00 (0.00, 0.00)	0.00 (0.00, 0.00)	0.00 (0.00, 0.00)	0.00 (0.00, 0.00)		
		Utah	(71-75)°F	10	11	0.00 (-0.00, 0.01)	0.00 (-0.00, 0.01)	0.09 (-0.05, 0.23)	0.01 (0.00, 0.02)	0.01 (-0.00, 0.02)	0.01 (-0.00, 0.02)	
			(76-80)°F	20	24	0.16 (0.08, 0.24)	0.14 (0.05, 0.22)	0.09 (-0.03, 0.22)	0.29 (0.17, 0.40)	0.32 (0.17, 0.45)	0.36 (0.14, 0.57)	
	(81-85)°F		27	26	0.37 (0.15, 0.58)	0.32 (0.06, 0.55)	0.05 (0.00, 0.09)	0.74 (0.40, 1.06)	0.82 (0.41, 1.20)	0.97 (0.32, 1.55)		
	(86-90)°F		18	13	0.33 (0.14, 0.51)	0.24 (0.02, 0.45)	0.18 (-0.01, 0.36)	0.62 (0.33, 0.90)	0.85 (0.51, 1.17)	1.10 (0.49, 1.63)		
	(91-95)°F		5	4	0.10 (0.04, 0.16)	0.08 (0.01, 0.15)	0.07 (0.01, 0.13)	0.15 (0.06, 0.24)	0.27 (0.16, 0.38)	0.39 (0.20, 0.54)		
	(96-100)°F		1	1	0.02 (-0.00, 0.04)	0.02 (-0.01, 0.04)	0.01 (-0.01, 0.03)	0.03 (0.00, 0.07)	0.05 (0.02, 0.08)	0.06 (-0.00, 0.11)		
	(101-105)°F		0	0	0.00 (-0.00, 0.01)	0.00 (-0.00, 0.01)	0.00 (0.00, 0.00)	0.00 (-0.01, 0.01)	0.01 (-0.00, 0.02)	0.01 (-0.00, 0.02)		
	(106-110)°F		0	0	0.00 (0.00, 0.00)	0.00 (0.00, 0.00)	0.00 (0.00, 0.00)	0.00 (0.00, 0.00)	0.00 (0.00, 0.00)	0.00 (0.00, 0.00)		
	West		California	(71-75)°F	14	11	-0.01 (-0.03, 0.01)	-0.01 (-0.03, 0.01)	-0.01 (-0.04, 0.01)	-0.03 (-0.05, -0.01)	-0.01 (-0.04, 0.01)	-0.01 (-0.05, 0.02)
(76-80)°F				24	15	0.15 (0.08, 0.22)	0.13 (0.06, 0.20)	0.07 (-0.02, 0.16)	0.17 (0.08, 0.25)	0.43 (0.34, 0.53)	0.50 (0.36, 0.64)	
(81-85)°F		21		17	0.24 (0.15, 0.33)	0.20 (0.11, 0.29)	0.17 (0.06, 0.26)	0.31 (0.21, 0.41)	0.73 (0.62, 0.84)	0.93 (0.76, 1.09)		
(86-90)°F		11		14	0.15 (0.13, 0.18)	0.13 (0.10, 0.16)	0.11 (0.09, 0.14)	0.20 (0.17, 0.22)	0.45 (0.41, 0.49)	0.60 (0.54, 0.66)		
(91-95)°F		8		12	0.12 (0.09, 0.14)	0.10 (0.07, 0.13)	0.07 (0.04, 0.10)	0.14 (0.11, 0.17)	0.33 (0.29, 0.37)	0.41 (0.35, 0.46)		
(96-100)°F		6		8	0.10 (0.08, 0.12)	0.08 (0.06, 0.10)	0.07 (0.05, 0.09)	0.13 (0.10, 0.15)	0.28 (0.25, 0.31)	0.36 (0.31, 0.40)		
(101-105)°F		3		4	0.06 (0.05, 0.07)	0.05 (0.04, 0.06)	0.06 (0.05, 0.06)	0.08 (0.07, 0.09)	0.17 (0.16, 0.19)	0.23 (0.21, 0.25)		
(106-110)°F		1		1	0.03 (0.03, 0.03)	0.02 (0.02, 0.03)	0.03 (0.03, 0.03)	0.04 (0.04, 0.04)	0.08 (0.08, 0.09)	0.11 (0.09, 0.12)		
Nevada		(71-75)°F		4	9	-0.03 (-0.05, -0.01)	-0.03 (-0.05, -0.00)	0.00 (-0.03, 0.04)	-0.03 (-0.07, 0.01)	-0.05 (-0.08, -0.02)	-0.03 (-0.08, 0.02)	
		(76-80)°F		11	22	-0.01 (-0.08, 0.06)	-0.02 (-0.09, 0.05)	0.02 (-0.08, 0.12)	-0.02 (-0.12, 0.07)	0.02 (-0.10, 0.14)	0.09 (-0.07, 0.25)	
		(81-85)°F	16	24	0.04 (-0.04, 0.13)	0.02 (-0.07, 0.11)	0.06 (-0.06, 0.18)	0.02 (-0.09, 0.13)	0.17 (0.01, 0.33)	0.24 (0.04, 0.44)		
		(86-90)°F	17	13	0.10 (0.05, 0.14)	0.06 (0.01, 0.10)	0.05 (-0.01, 0.11)	0.08 (0.03, 0.14)	0.28 (0.20, 0.36)	0.26 (0.15, 0.37)		
		(91-95)°F	18	7	0.17 (-0.04, 0.38)	0.11 (-0.11, 0.33)	0.04 (-0.26, 0.34)	0.20 (-0.09, 0.49)	0.48 (0.16, 0.79)	0.33 (-0.20, 0.84)		
		(96-100)°F	19	4	0.36 (0.03, 0.71)	0.20 (-0.17, 0.57)	0.17 (-0.27, 0.59)	0.34 (-0.12, 0.79)	1.03 (0.52, 1.52)	0.81 (-0.03, 1.60)		
		(101-105)°F	7	1	0.23 (0.08, 0.38)	0.12 (-0.05, 0.29)	0.13 (-0.05, 0.31)	0.18 (-0.03, 0.37)	0.65 (0.41, 0.87)	0.59 (0.13, 0.99)		
		(106-110)°F	1	0	0.03 (-0.01, 0.06)	0.02 (-0.02, 0.06)	-0.00 (-0.06, 0.05)	0.03 (-0.03, 0.08)	0.08 (0.01, 0.14)	0.06 (-0.08, 0.17)		
		West North Central	Nebraska	(71-75)°F	8	8	-0.11 (-0.12, -0.09)	-0.11 (-0.13, -0.09)	-0.18 (-0.20, -0.15)	-0.09 (-0.12, -0.06)	-0.11 (-0.14, -0.08)	-0.23 (-0.28, -0.18)
				(76-80)°F	12	13	0.01 (0.01, 0.01)	0.01 (0.01, 0.01)	0.01 (0.01, 0.02)	0.01 (0.00, 0.01)	0.00 (-0.01, 0.01)	0.01 (0.00, 0.02)
(81-85)°F				18	18	0.20 (0.16, 0.24)	0.21 (0.17, 0.26)	0.31 (0.24, 0.38)	0.17 (0.10, 0.24)	0.07 (-0.01, 0.15)	0.37 (0.23, 0.50)	
(86-90)°F				15	15	0.30 (0.22, 0.39)	0.32 (0.24, 0.41)	0.45 (0.32, 0.58)	0.25 (0.13, 0.38)	0.05 (-0.11, 0.20)	0.52 (0.25, 0.78)	
(91-95)°F	12			13	0.34 (0.25, 0.44)	0.36 (0.26, 0.45)	0.46 (0.31, 0.59)	0.26 (0.12, 0.39)	0.11 (-0.07, 0.28)	0.55 (0.24, 0.84)		
(96-100)°F	10			9	0.32 (0.23, 0.41)	0.32 (0.23, 0.41)	0.36 (0.24, 0.49)	0.21 (0.08, 0.33)	0.22 (0.05, 0.37)	0.46 (0.17, 0.73)		
(101-105)°F	7			7	0.26 (0.19, 0.32)	0.25 (0.17, 0.32)	0.24 (0.14, 0.32)	0.14 (0.04, 0.23)	0.31 (0.18, 0.43)	0.33 (0.09, 0.55)		
(106-110)°F	5			4	0.17 (0.12, 0.23)	0.15 (0.09, 0.21)	0.22 (0.14, 0.29)	0.09 (0.00, 0.16)	0.27 (0.15, 0.38)	0.37 (0.12, 0.60)		
South Dakota	(71-75)°F			11	11	0.07 (-0.03, 0.17)	0.01 (-0.09, 0.09)	0.27 (0.09, 0.44)	0.10 (-0.07, 0.26)	0.01 (-0.01, 0.02)	0.15 (-0.18, 0.46)	
	(76-80)°F			15	15	0.06 (-0.04, 0.15)	0.01 (-0.08, 0.10)	0.25 (0.09, 0.41)	0.11 (-0.04, 0.26)	0.09 (-0.02, 0.18)	0.13 (-0.17, 0.40)	
	(81-85)°F		17	17	0.03 (-0.02, 0.08)	0.01 (-0.07, 0.10)	0.12 (0.03, 0.21)	0.06 (-0.03, 0.14)	0.21 (-0.01, 0.44)	0.07 (-0.06, 0.19)		
	(86-90)°F		14	14	0.03 (-0.00, 0.06)	0.03 (-0.06, 0.13)	0.07 (0.02, 0.11)	0.06 (0.00, 0.11)	0.24 (-0.04, 0.50)	0.18 (0.01, 0.33)		
	(91-95)°F		10	10	0.07 (0.01, 0.12)	0.06 (-0.03, 0.15)	0.16 (0.07, 0.24)	0.14 (0.04, 0.23)	0.15 (-0.08, 0.34)	0.40 (0.11, 0.65)		
	(96-100)°F		6	6	0.09 (0.03, 0.14)	0.07 (-0.01, 0.14)	0.20 (0.11, 0.29)	0.17 (0.07, 0.27)	0.10 (-0.09, 0.27)	0.41 (0.17, 0.62)		
	(101-105)°F		3	4	0.08 (0.03, 0.13)	0.06 (-0.00, 0.11)	0.18 (0.10, 0.26)	0.14 (0.06, 0.22)	0.06 (-0.05, 0.17)	0.32 (0.13, 0.48)		
	(106-110)°F		2	2	0.07 (0.03, 0.10)	0.04 (-0.01, 0.08)	0.14 (0.08, 0.20)	0.10 (0.04, 0.16)	0.10 (0.01, 0.18)	0.25 (0.08, 0.39)		

Table S3: State-specific mean (95% CI) attributable number (AN) of hospitalizations for a cumulative lag period of 2 days, by heat index ranges

Climate region	State	Heat Index index range	Frequency by days of exposure (%)		Mean and (95CI) Attributable Number (AN) per Summer						
					All-Cause	All cardiovascular related	All respiratory related	Diabetes related	Fluid and electrolyte disorders related	Renal failure related	
			Person-Days	County-Days	Mean AN (95%CI)	Mean AN (95%CI)	Mean AN (95%CI)	Mean AN (95%CI)	Mean AN (95%CI)	Mean AN (95%CI)	
Central	Illinois	(71-75)°F	13	10	-12 (-21, -3)	-11 (-19, -3)	-7 (-11, -2)	-8 (-12, -4)	-8 (-12, -4)	-6 (-7, -4)	
		(76-80)°F	17	15	251 (137, 370)	179 (80, 279)	54 (1, 108)	127 (77, 177)	108 (63, 155)	41 (21, 62)	
		(81-85)°F	15	15	571 (322, 816)	406 (204, 617)	117 (6, 236)	275 (175, 378)	245 (150, 342)	83 (39, 126)	
		(86-90)°F	13	15	750 (452, 1037)	522 (281, 765)	151 (25, 282)	332 (219, 451)	341 (231, 453)	117 (63, 170)	
		(91-95)°F	10	12	709 (476, 924)	469 (282, 657)	143 (58, 232)	259 (179, 342)	352 (266, 434)	118 (78, 157)	
		(96-100)°F	7	9	588 (438, 733)	362 (230, 488)	119 (65, 172)	163 (112, 214)	326 (266, 381)	113 (82, 142)	
		(101-105)°F	4	6	381 (292, 471)	211 (130, 292)	80 (48, 110)	71 (38, 104)	254 (215, 291)	91 (67, 112)	
		(106-110)°F	3	4	247 (183, 310)	117 (60, 172)	55 (31, 77)	25 (-2, 51)	214 (185, 242)	77 (58, 94)	
		Indiana	(71-75)°F	12	12	-39 (-46, -31)	-32 (-38, -25)	-19 (-24, -15)	-14 (-18, -10)	-22 (-25, -18)	-5 (-7, -3)
			(76-80)°F	19	18	120 (97, 145)	95 (74, 115)	54 (42, 66)	44 (33, 54)	50 (37, 62)	13 (8, 18)
	(81-85)°F		15	15	288 (234, 342)	221 (176, 266)	131 (102, 160)	104 (79, 127)	117 (89, 144)	33 (20, 45)	
	(86-90)°F		14	14	422 (346, 501)	310 (244, 376)	180 (139, 222)	149 (113, 183)	181 (140, 220)	55 (36, 73)	
	(91-95)°F		11	12	377 (309, 445)	251 (193, 311)	139 (105, 172)	125 (96, 153)	189 (153, 223)	63 (45, 80)	
	(96-100)°F		8	8	256 (208, 305)	141 (99, 185)	67 (45, 88)	74 (56, 93)	159 (133, 182)	59 (47, 72)	
	(101-105)°F		4	4	129 (102, 158)	51 (25, 77)	21 (9, 32)	32 (20, 43)	110 (95, 125)	46 (36, 55)	
	(106-110)°F		2	3	68 (51, 84)	21 (5, 36)	16 (9, 23)	16 (9, 23)	78 (68, 87)	32 (25, 38)	
	Kentucky		(71-75)°F	10	10	-40 (-48, -31)	-27 (-35, -19)	-2 (-13, 16)	-28 (-32, -23)	-21 (-25, -17)	-9 (-11, -8)
			(76-80)°F	16	17	10 (5, 16)	8 (3, 12)	17 (-2, 33)	4 (2, 6)	6 (4, 9)	3 (2, 4)
		(81-85)°F	15	15	98 (68, 126)	70 (47, 93)	28 (11, 44)	41 (30, 53)	58 (45, 72)	27 (21, 34)	
		(86-90)°F	16	17	172 (114, 227)	119 (74, 165)	31 (4, 58)	60 (39, 82)	116 (88, 142)	55 (41, 67)	
		(91-95)°F	15	15	165 (94, 235)	96 (38, 154)	9 (-24, 42)	46 (19, 74)	145 (110, 177)	72 (55, 89)	
		(96-100)°F	10	9	85 (30, 137)	27 (-19, 72)	-15 (-39, 7)	13 (-7, 32)	114 (89, 138)	59 (45, 72)	
		(101-105)°F	5	5	37 (8, 66)	-6 (-30, 19)	-19 (-31, -8)	-4 (-14, 6)	83 (70, 97)	43 (34, 51)	
		(106-110)°F	3	3	31 (11, 50)	1 (-17, 19)	-8 (-16, 0)	-2 (-10, 6)	61 (50, 71)	27 (19, 33)	
		Missouri	(71-75)°F	7	7	-49 (-61, -37)	-25 (-35, -14)	-9 (-16, -2)	-7 (-14, -1)	-17 (-23, -11)	-7 (-9, -4)
			(76-80)°F	13	13	-23 (-28, -18)	-13 (-18, -10)	-5 (-7, -2)	-4 (-7, -2)	-8 (-10, -6)	-3 (-4, -2)
	(81-85)°F		14	14	104 (81, 125)	74 (54, 92)	23 (12, 34)	27 (17, 36)	35 (24, 45)	12 (8, 17)	
	(86-90)°F		15	15	284 (222, 344)	214 (163, 262)	66 (35, 94)	79 (53, 102)	96 (66, 124)	32 (18, 45)	
	(91-95)°F		13	13	415 (331, 494)	315 (247, 378)	90 (49, 127)	122 (88, 153)	160 (119, 197)	54 (35, 73)	
	(96-100)°F		11	11	461 (374, 540)	339 (269, 406)	86 (46, 122)	143 (109, 173)	221 (180, 258)	79 (59, 98)	
	(101-105)°F		9	9	404 (337, 468)	279 (222, 336)	55 (27, 79)	130 (106, 153)	248 (216, 279)	93 (78, 108)	
	(106-110)°F		7	6	335 (280, 387)	217 (167, 264)	27 (8, 45)	111 (91, 129)	264 (235, 291)	108 (91, 123)	
	West Virginia		(71-75)°F	16	16	-1 (-8, 6)	-2 (-8, 5)	-2 (-10, 6)	2 (-1, 5)	-1 (-4, 3)	-1 (-3, 0)
			(76-80)°F	21	22	90 (66, 112)	64 (43, 83)	21 (5, 38)	49 (39, 59)	34 (22, 44)	37 (32, 42)
		(81-85)°F	16	16	104 (72, 135)	70 (43, 96)	20 (3, 37)	60 (46, 73)	55 (39, 70)	59 (52, 66)	
		(86-90)°F	15	15	74 (33, 114)	40 (4, 73)	11 (-11, 31)	45 (28, 61)	72 (52, 93)	72 (62, 83)	
		(91-95)°F	10	9	8 (-22, 40)	-11 (-38, 17)	1 (-14, 15)	5 (-7, 18)	56 (41, 72)	50 (42, 58)	
		(96-100)°F	4	4	-20 (-36, -3)	-27 (-41, -12)	-1 (-8, 7)	-13 (-20, -7)	32 (23, 40)	24 (19, 30)	
		(101-105)°F	2	1	-4 (-11, 4)	-8 (-15, -2)	5 (2, 9)	-5 (-9, -2)	17 (13, 21)	9 (6, 12)	
	East North Central	Iowa	(106-110)°F	1	0	7 (4, 10)	4 (2, 7)	6 (4, 7)	2 (1, 4)	7 (5, 9)	3 (1, 4)
			(71-75)°F	11	11	-12 (-16, -9)	-10 (-13, -8)	-1 (-3, 1)	1 (-0, 3)	-5 (-7, -3)	-3 (-4, -2)
			(76-80)°F	15	16	42 (35, 49)	30 (24, 36)	6 (2, 9)	6 (3, 9)	13 (9, 17)	10 (8, 11)
(81-85)°F			16	16	130 (108, 152)	89 (70, 107)	21 (9, 32)	27 (17, 36)	40 (28, 51)	30 (26, 35)	
(86-90)°F			14	14	183 (148, 215)	120 (92, 146)	30 (13, 47)	44 (31, 58)	58 (40, 76)	43 (36, 49)	
(91-95)°F			10	10	138 (109, 165)	86 (63, 109)	22 (8, 35)	38 (27, 49)	54 (39, 69)	40 (34, 46)	
(96-100)°F			8	7	90 (66, 113)	51 (30, 71)	13 (2, 23)	28 (19, 37)	49 (35, 62)	34 (28, 39)	
(101-105)°F			5	5	39 (22, 55)	15 (0, 29)	2 (-5, 8)	15 (9, 22)	39 (29, 48)	23 (19, 27)	
(106-110)°F			3	3	15 (4, 26)	2 (-8, 11)	-5 (-9, -0)	5 (0, 9)	29 (22, 35)	16 (13, 19)	
Northeast			Maryland	(71-75)°F	12	13	18 (-60, 97)	44 (-86, 170)	52 (-23, 129)	-20 (-35, -6)	-47 (-63, -33)
	(76-80)°F	17		18	46 (-21, 110)	47 (-86, 177)	56 (-17, 133)	34 (12, 56)	87 (57, 119)	56 (44, 67)	
	(81-85)°F	17		17	179 (38, 320)	118 (-15, 243)	46 (-28, 115)	109 (30, 186)	302 (190, 410)	193 (144, 237)	
	(86-90)°F	16		15	317 (78, 543)	193 (19, 362)	63 (-42, 155)	132 (16, 240)	487 (327, 647)	295 (222, 358)	
	(91-95)°F	13		12	366 (115, 610)	208 (28, 386)	100 (-7, 195)	85 (-26, 193)	602 (442, 768)	349 (272, 414)	
	(96-100)°F	7		6	231 (97, 365)	125 (18, 228)	85 (30, 135)	7 (-48, 63)	426 (342, 514)	229 (187, 269)	
	(101-105)°F	3		3	142 (75, 209)	85 (30, 138)	48 (22, 73)	7 (-22, 36)	274 (226, 321)	147 (121, 172)	
	(106-110)°F	1		1	68 (42, 93)	49 (28, 69)	15 (4, 25)	17 (5, 28)	119 (98, 138)	61 (50, 71)	
	New York	(71-75)°F	19	22	314 (225, 407)	232 (157, 309)	120 (39, 199)	119 (85, 150)	191 (150, 231)	42 (26, 58)	
		(76-80)°F	20	20	820 (601, 1036)	593 (415, 785)	284 (186, 382)	338 (258, 418)	537 (442, 632)	135 (94, 175)	
		(81-85)°F	14	11	990 (715, 1277)	669 (435, 906)	338 (249, 426)	412 (306, 518)	690 (580, 800)	196 (147, 242)	

		(86-90)°F	11	8	1140 (855, 1425)	708 (470, 940)	416 (344, 485)	440 (336, 549)	840 (731, 944)	260 (211, 308)
		(91-95)°F	7	5	943 (758, 1131)	547 (393, 705)	374 (336, 411)	329 (264, 396)	718 (649, 783)	233 (200, 265)
		(96-100)°F	3	2	634 (528, 738)	351 (260, 443)	257 (234, 279)	208 (174, 245)	518 (480, 556)	179 (156, 201)
		(101-105)°F	1	1	269 (231, 305)	148 (117, 181)	101 (91, 110)	83 (70, 97)	241 (225, 256)	87 (77, 97)
		(106-110)°F	0	0	132 (110, 154)	73 (55, 91)	39 (32, 46)	40 (30, 50)	129 (120, 140)	49 (42, 56)
	Rhode Island	(71-75)°F	20	21	23 (-7, 53)	17 (-9, 42)	12 (-3, 29)	11 (-2, 23)	21 (8, 34)	16 (9, 23)
		(76-80)°F	22	22	67 (-12, 146)	49 (-19, 116)	29 (-14, 72)	30 (-5, 64)	59 (25, 93)	45 (26, 65)
		(81-85)°F	11	10	72 (13, 131)	54 (2, 104)	26 (-7, 57)	29 (2, 55)	57 (30, 82)	42 (25, 58)
		(86-90)°F	9	9	99 (42, 156)	76 (25, 125)	32 (2, 61)	37 (12, 62)	69 (43, 93)	46 (30, 61)
		(91-95)°F	6	5	94 (57, 132)	73 (40, 106)	28 (9, 46)	33 (16, 49)	58 (42, 74)	33 (22, 43)
		(96-100)°F	2	2	55 (37, 73)	43 (27, 59)	15 (6, 24)	19 (11, 27)	32 (24, 40)	19 (13, 24)
		(101-105)°F	1	1	21 (15, 27)	16 (10, 21)	5 (2, 8)	8 (4, 10)	12 (9, 14)	8 (6, 10)
		(106-110)°F	0	0	10 (6, 14)	8 (4, 11)	2 (-1, 4)	3 (1, 5)	6 (4, 8)	3 (2, 4)
Northwest	Oregon	(71-75)°F	19	15	87 (41, 131)	77 (38, 114)	20 (5, 36)	59 (39, 77)	25 (1, 47)	41 (30, 51)
		(76-80)°F	18	16	142 (65, 215)	127 (63, 186)	11 (-5, 28)	97 (67, 126)	48 (8, 84)	71 (52, 88)
		(81-85)°F	14	14	276 (208, 339)	220 (164, 271)	48 (30, 65)	120 (95, 142)	117 (83, 146)	77 (61, 91)
		(86-90)°F	6	7	214 (182, 244)	161 (135, 186)	51 (40, 62)	76 (65, 86)	102 (86, 118)	46 (38, 53)
		(91-95)°F	2	3	116 (103, 128)	84 (73, 95)	33 (28, 37)	41 (36, 46)	60 (53, 67)	25 (21, 28)
		(96-100)°F	1	1	42 (37, 46)	29 (25, 33)	13 (11, 15)	16 (14, 18)	24 (20, 26)	9 (7, 11)
		(101-105)°F	0	0	16 (13, 19)	10 (7, 13)	6 (5, 8)	9 (7, 10)	11 (9, 13)	6 (4, 7)
		(106-110)°F	0	0	3 (2, 5)	2 (1, 3)	2 (1, 2)	2 (2, 3)	3 (2, 4)	2 (1, 2)
South	Kansas	(71-75)°F	7	7	-34 (-49, -19)	-28 (-34, -21)	1 (-3, 5)	-4 (-9, 0)	-10 (-19, -1)	-8 (-10, -6)
		(76-80)°F	11	11	-14 (-33, 5)	-11 (-14, -8)	-0 (-2, 2)	-2 (-4, -0)	-1 (-14, 11)	-3 (-4, -2)
		(81-85)°F	14	14	13 (-8, 34)	11 (5, 18)	2 (-2, 6)	3 (-0, 7)	13 (-1, 27)	4 (3, 6)
		(86-90)°F	14	15	27 (3, 52)	22 (3, 40)	8 (-3, 19)	9 (-0, 19)	24 (10, 38)	11 (5, 16)
		(91-95)°F	14	14	33 (4, 62)	24 (-8, 56)	18 (-1, 36)	14 (-2, 31)	35 (19, 51)	16 (6, 25)
		(96-100)°F	13	13	55 (22, 88)	38 (2, 73)	27 (8, 46)	16 (-2, 34)	62 (44, 80)	22 (10, 33)
		(101-105)°F	10	11	85 (55, 115)	57 (25, 87)	33 (19, 48)	15 (0, 29)	94 (77, 111)	27 (16, 37)
		(106-110)°F	8	7	99 (70, 127)	68 (42, 93)	32 (21, 42)	19 (7, 30)	107 (89, 124)	36 (26, 46)
Southeast	Florida	(71-75)°F	0	1	-10 (-22, 1)	1 (-10, 13)	7 (-2, 16)	-4 (-13, 4)	-16 (-21, -11)	-8 (-11, -5)
		(76-80)°F	2	2	-64 (-98, -31)	-15 (-50, 21)	8 (-17, 32)	-23 (-47, -1)	-70 (-87, -55)	-32 (-39, -25)
		(81-85)°F	4	4	-161 (-210, -114)	-74 (-119, -32)	-23 (-50, 3)	-52 (-80, -23)	-128 (-151, -107)	-53 (-60, -46)
		(86-90)°F	11	12	-242 (-304, -181)	-125 (-181, -71)	-64 (-93, -35)	-75 (-104, -44)	-166 (-196, -138)	-71 (-82, -61)
		(91-95)°F	27	25	240 (144, 333)	141 (70, 215)	97 (49, 145)	80 (44, 118)	154 (104, 200)	62 (41, 83)
		(96-100)°F	33	31	1784 (1370, 2175)	1090 (752, 1413)	588 (402, 764)	556 (402, 709)	1012 (818, 1196)	407 (323, 492)
		(101-105)°F	19	19	2004 (1706, 2286)	1352 (1088, 1596)	417 (313, 512)	686 (589, 774)	1107 (971, 1235)	477 (406, 547)
		(106-110)°F	4	5	563 (496, 626)	407 (349, 459)	100 (79, 121)	219 (195, 240)	278 (241, 315)	128 (103, 150)
	Georgia	(71-75)°F	3	3	-27 (-41, -13)	-10 (-27, 5)	3 (-4, 10)	-9 (-16, -2)	-19 (-25, -13)	-17 (-20, -15)
		(76-80)°F	8	7	-49 (-72, -27)	-18 (-51, 12)	-5 (-14, 3)	-19 (-28, -11)	-41 (-51, -32)	-25 (-29, -22)
		(81-85)°F	12	11	-21 (-43, 1)	-4 (-38, 31)	-2 (-7, 2)	-8 (-12, -4)	-20 (-24, -15)	-10 (-11, -8)
		(86-90)°F	20	18	98 (56, 140)	54 (24, 84)	38 (19, 56)	48 (32, 65)	96 (72, 120)	34 (22, 46)
		(91-95)°F	22	22	345 (255, 431)	182 (131, 229)	119 (77, 159)	151 (114, 188)	320 (263, 374)	116 (88, 145)
		(96-100)°F	18	20	587 (492, 676)	336 (266, 399)	167 (129, 203)	213 (176, 248)	488 (429, 542)	227 (196, 257)
		(101-105)°F	10	12	554 (498, 608)	343 (293, 389)	127 (108, 146)	170 (149, 189)	408 (372, 440)	222 (200, 241)
		(106-110)°F	3	4	235 (214, 255)	151 (134, 168)	47 (38, 55)	71 (62, 80)	175 (159, 189)	96 (84, 106)
	North Carolina	(71-75)°F	8	10	-8 (-29, 13)	13 (-7, 34)	2 (-18, 20)	-13 (-22, -4)	-39 (-47, -31)	-26 (-29, -23)
		(76-80)°F	12	14	8 (-24, 40)	20 (-10, 49)	17 (-11, 45)	-6 (-15, 2)	-19 (-30, -9)	-14 (-19, -10)
		(81-85)°F	14	14	65 (27, 104)	40 (5, 73)	30 (-2, 60)	19 (10, 27)	53 (40, 67)	31 (24, 37)
		(86-90)°F	18	17	186 (125, 242)	92 (45, 141)	35 (7, 63)	65 (44, 88)	177 (147, 207)	101 (86, 114)
		(91-95)°F	19	17	331 (233, 422)	164 (90, 238)	23 (-2, 47)	113 (74, 152)	333 (278, 386)	184 (157, 209)
		(96-100)°F	14	12	341 (259, 420)	176 (112, 241)	7 (-11, 25)	102 (69, 132)	391 (345, 434)	211 (186, 233)
		(101-105)°F	7	6	238 (197, 280)	132 (97, 168)	8 (-3, 20)	61 (46, 76)	290 (265, 312)	159 (143, 174)
		(106-110)°F	2	2	128 (109, 146)	77 (61, 93)	18 (10, 25)	34 (26, 42)	139 (124, 152)	83 (72, 93)
	Virginia	(71-75)°F	11	12	-4 (-20, 13)	8 (-7, 23)	57 (35, 79)	-7 (-15, 1)	-30 (-35, -25)	-10 (-11, -8)
		(76-80)°F	16	17	24 (1, 46)	19 (-1, 39)	74 (45, 102)	4 (-6, 14)	22 (15, 28)	7 (5, 10)
		(81-85)°F	16	16	78 (44, 109)	45 (17, 71)	43 (25, 59)	16 (3, 28)	101 (83, 117)	38 (31, 45)
		(86-90)°F	17	17	159 (96, 218)	89 (39, 137)	23 (15, 30)	31 (9, 52)	206 (169, 238)	78 (62, 92)
		(91-95)°F	14	13	185 (118, 248)	93 (39, 144)	24 (20, 28)	45 (23, 65)	244 (205, 278)	95 (78, 111)
		(96-100)°F	10	9	169 (117, 219)	72 (28, 113)	45 (37, 52)	54 (38, 69)	232 (202, 258)	94 (80, 107)
		(101-105)°F	5	4	135 (107, 161)	66 (42, 88)	54 (46, 61)	48 (40, 57)	158 (141, 172)	67 (58, 76)
		(106-110)°F	2	1	98 (89, 108)	72 (63, 80)	34 (31, 37)	28 (24, 32)	71 (64, 78)	34 (29, 38)
Southwest	Arizona	(71-75)°F	1	4	-33 (-43, -24)	-26 (-34, -18)	-2 (-7, 4)	-12 (-18, -7)	-19 (-24, -14)	-6 (-10, -4)
		(76-80)°F	5	11	-103 (-158, -49)	-87 (-133, -41)	4 (-27, 34)	-38 (-69, -8)	-60 (-87, -34)	-21 (-36, -7)
		(81-85)°F	9	21	-77 (-129, -24)	-71 (-114, -30)	3 (-23, 31)	-31 (-57, -6)	-37 (-64, -12)	-13 (-25, -2)

		(86-90)°F	14	19	-17 (-81, 45)	-29 (-79, 22)	10 (-19, 40)	-18 (-48, 9)	-9 (-41, 22)	-5 (-18, 9)	
		(91-95)°F	19	16	222 (133, 313)	118 (45, 192)	59 (19, 100)	51 (17, 83)	132 (85, 178)	44 (22, 64)	
		(96-100)°F	18	12	491 (306, 673)	242 (88, 388)	150 (75, 223)	125 (57, 192)	328 (232, 423)	114 (69, 155)	
		(101-105)°F	20	9	756 (354, 1158)	325 (6, 641)	278 (115, 435)	202 (42, 356)	576 (370, 782)	217 (120, 307)	
		(106-110)°F	11	4	470 (201, 735)	134 (-92, 365)	169 (75, 265)	91 (-7, 187)	471 (327, 608)	209 (132, 283)	
	Colorado	(71-75)°F	12	14	-2 (-10, 6)	-1 (-8, 5)	-0 (-4, 4)	-1 (-4, 2)	-4 (-9, 1)	-3 (-5, -1)	
		(76-80)°F	22	21	178 (133, 224)	102 (65, 138)	40 (17, 63)	46 (29, 63)	105 (79, 131)	54 (43, 65)	
		(81-85)°F	26	19	416 (322, 512)	234 (159, 313)	92 (49, 137)	121 (86, 155)	265 (212, 321)	140 (114, 167)	
		(86-90)°F	17	11	355 (276, 433)	184 (121, 247)	74 (40, 104)	122 (92, 150)	283 (234, 329)	137 (111, 162)	
		(91-95)°F	5	5	149 (117, 180)	78 (51, 105)	35 (21, 48)	55 (42, 68)	123 (101, 142)	51 (39, 63)	
		(96-100)°F	0	1	26 (21, 32)	15 (10, 20)	8 (5, 11)	10 (7, 13)	18 (13, 22)	6 (4, 9)	
		(101-105)°F	0	0	0 (0, 0)	0 (0, 0)	0 (0, 0)	0 (0, 0)	0 (0, 0)	0 (0, 0)	
		(106-110)°F	0	0	0 (0, 0)	0 (0, 0)	0 (0, 0)	0 (0, 0)	0 (0, 0)	0 (0, 0)	
	Utah	(71-75)°F	10	11	1 (-1, 3)	1 (-1, 2)	9 (-5, 25)	1 (0, 2)	1 (-0, 2)	0 (-0, 1)	
		(76-80)°F	20	24	66 (32, 97)	41 (15, 65)	10 (-4, 24)	31 (18, 42)	37 (20, 53)	13 (5, 21)	
		(81-85)°F	27	26	153 (61, 237)	92 (19, 160)	5 (0, 10)	78 (42, 111)	97 (49, 141)	36 (12, 57)	
		(86-90)°F	18	13	137 (59, 210)	71 (7, 129)	20 (-1, 39)	65 (34, 94)	101 (60, 138)	41 (18, 60)	
		(91-95)°F	5	4	43 (17, 67)	23 (2, 44)	7 (1, 14)	16 (6, 25)	32 (19, 45)	14 (8, 20)	
		(96-100)°F	1	1	8 (-1, 17)	4 (-4, 12)	1 (-1, 4)	4 (0, 7)	6 (2, 10)	2 (-0, 4)	
		(101-105)°F	0	0	2 (-1, 4)	1 (-1, 3)	0 (0, 0)	0 (-1, 1)	1 (-0, 2)	0 (-0, 1)	
		(106-110)°F	0	0	0 (0, 0)	0 (0, 0)	0 (0, 0)	0 (0, 0)	0 (0, 0)	0 (0, 0)	
	West	California	(71-75)°F	14	11	-104 (-255, 47)	-87 (-216, 47)	-31 (-96, 36)	-95 (-158, -27)	-35 (-103, 31)	-12 (-41, 17)
			(76-80)°F	24	15	1247 (672, 1842)	881 (406, 1368)	189 (-53, 425)	500 (245, 737)	1075 (836, 1312)	390 (280, 500)
			(81-85)°F	21	17	2037 (1281, 2765)	1382 (739, 1990)	443 (161, 699)	910 (610, 1182)	1811 (1524, 2088)	728 (594, 859)
			(86-90)°F	11	14	1279 (1061, 1510)	874 (686, 1056)	305 (229, 380)	565 (478, 646)	1118 (1020, 1215)	471 (423, 521)
			(91-95)°F	8	12	977 (764, 1201)	685 (499, 862)	185 (106, 263)	405 (315, 496)	825 (728, 919)	321 (278, 363)
			(96-100)°F	6	8	842 (668, 1006)	571 (426, 709)	178 (131, 227)	364 (301, 430)	690 (614, 764)	280 (245, 313)
			(101-105)°F	3	4	542 (459, 624)	350 (280, 422)	153 (135, 172)	244 (215, 272)	432 (391, 471)	181 (162, 199)
			(106-110)°F	1	1	260 (232, 289)	165 (140, 191)	78 (70, 86)	113 (102, 123)	203 (187, 219)	83 (74, 91)
		Nevada	(71-75)°F	4	9	-17 (-30, -4)	-13 (-25, -2)	0 (-7, 8)	-6 (-13, 1)	-11 (-17, -4)	-2 (-5, 1)
			(76-80)°F	11	22	-8 (-50, 35)	-10 (-46, 28)	4 (-18, 25)	-4 (-23, 13)	3 (-21, 27)	6 (-4, 16)
			(81-85)°F	16	24	28 (-27, 81)	8 (-37, 53)	12 (-13, 37)	4 (-17, 24)	34 (2, 66)	15 (3, 28)
			(86-90)°F	17	13	61 (35, 88)	29 (6, 51)	10 (-2, 23)	16 (6, 27)	57 (41, 72)	16 (9, 23)
			(91-95)°F	18	7	106 (-23, 240)	54 (-55, 168)	9 (-55, 73)	38 (-17, 94)	96 (32, 159)	21 (-13, 53)
			(96-100)°F	19	4	229 (16, 448)	99 (-86, 283)	36 (-58, 127)	66 (-24, 153)	206 (103, 304)	51 (-2, 101)
			(101-105)°F	7	1	147 (51, 241)	59 (-26, 143)	28 (-10, 65)	34 (-5, 71)	129 (83, 175)	37 (8, 62)
			(106-110)°F	1	0	18 (-5, 41)	10 (-10, 29)	-1 (-12, 10)	5 (-5, 16)	16 (2, 28)	4 (-5, 11)
	West North Central	Nebraska	(71-75)°F	8	8	-39 (-46, -33)	-31 (-36, -26)	-20 (-23, -17)	-9 (-12, -6)	-11 (-14, -8)	-6 (-8, -5)
			(76-80)°F	12	13	3 (2, 4)	3 (2, 4)	2 (1, 2)	1 (0, 1)	0 (-1, 1)	0 (0, 0)
			(81-85)°F	18	18	73 (58, 90)	60 (47, 73)	36 (28, 44)	17 (10, 24)	7 (-1, 15)	10 (6, 14)
			(86-90)°F	15	15	113 (83, 144)	93 (69, 117)	51 (37, 66)	25 (12, 37)	4 (-11, 19)	15 (7, 22)
			(91-95)°F	12	13	128 (93, 161)	102 (74, 129)	52 (36, 68)	26 (12, 39)	11 (-7, 27)	15 (7, 24)
			(96-100)°F	10	9	119 (87, 151)	92 (65, 117)	42 (28, 55)	21 (8, 33)	21 (5, 35)	13 (5, 20)
			(101-105)°F	7	7	96 (70, 120)	70 (49, 90)	27 (17, 37)	14 (4, 23)	30 (17, 41)	9 (3, 16)
			(106-110)°F	5	4	64 (44, 84)	44 (26, 60)	25 (16, 33)	9 (0, 16)	25 (14, 36)	11 (3, 17)
		South Dakota	(71-75)°F	11	11	10 (-5, 25)	1 (-10, 11)	14 (5, 22)	4 (-3, 11)	0 (-0, 1)	2 (-2, 5)
			(76-80)°F	15	15	8 (-5, 21)	1 (-9, 11)	13 (4, 21)	5 (-2, 11)	4 (-1, 8)	1 (-2, 4)
			(81-85)°F	17	17	4 (-3, 11)	2 (-7, 11)	6 (1, 11)	2 (-1, 6)	9 (-1, 19)	1 (-1, 2)
			(86-90)°F	14	14	4 (-1, 8)	4 (-7, 14)	3 (1, 5)	2 (0, 5)	11 (-2, 22)	2 (0, 4)
			(91-95)°F	10	10	10 (1, 17)	7 (-3, 16)	8 (3, 12)	6 (2, 10)	6 (-4, 15)	4 (1, 7)
			(96-100)°F	6	6	12 (4, 20)	8 (-1, 15)	10 (6, 15)	7 (3, 12)	5 (-4, 12)	4 (2, 7)
			(101-105)°F	3	4	11 (4, 18)	6 (-0, 12)	9 (5, 13)	6 (2, 10)	3 (-2, 7)	3 (1, 5)
			(106-110)°F	2	2	10 (4, 15)	4 (-1, 9)	7 (4, 10)	4 (2, 7)	4 (0, 8)	3 (1, 4)