

LONDON
SCHOOL of
HYGIENE
& TROPICAL
MEDICINE



Oakley, L; Baker, CP; Addanki, S; Gupta, V; Walia, GK; Aggarwal, A; Bhogadi, S; Kulkarni, B; Wilson, RT; Prabhakaran, D; Ben-Shlomo, Y; Davey Smith, G; Radha Krishna, KV; Kinra, S (2017) Is increasing urbanicity associated with changes in breastfeeding duration in rural India? An analysis of cross-sectional household data from the Andhra Pradesh children and parents study. *BMJ open*, 7 (9). ISSN 2044-6055 DOI: <https://doi.org/10.1136/bmjopen-2017-016331>

Downloaded from: <http://researchonline.lshtm.ac.uk/4646334/>

DOI: [10.1136/bmjopen-2017-016331](https://doi.org/10.1136/bmjopen-2017-016331)

Usage Guidelines

Please refer to usage guidelines at <http://researchonline.lshtm.ac.uk/policies.html> or alternatively contact researchonline@lshtm.ac.uk.

Available under license: <http://creativecommons.org/licenses/by/2.5/>

BMJ Open Is increasing urbanicity associated with changes in breastfeeding duration in rural India? An analysis of cross-sectional household data from the Andhra Pradesh children and parents study

Laura Oakley,¹ Christopher P Baker,¹ Srivalli Addanki,² Vipin Gupta,³ Gagandeep Kaur Walia,⁴ Aastha Aggarwal,⁴ Santhi Bhogadi,² Bharati Kulkarni,⁵ Robin T Wilson,⁶ Dorairaj Prabhakaran,⁴ Yoav Ben-Shlomo,⁷ George Davey Smith,⁷ K V Radha Krishna,⁵ Sanjay Kinra¹

To cite: Oakley L, Baker CP, Addanki S, *et al.* Is increasing urbanicity associated with changes in breastfeeding duration in rural India? An analysis of cross-sectional household data from the Andhra Pradesh children and parents study. *BMJ Open* 2017;**7**:e016331. doi:10.1136/bmjopen-2017-016331

► Prepublication history and additional material for this paper are available online. To view these files, please visit the journal online (<http://dx.doi.org/10.1136/bmjopen-2017-016331>).

Received 8 February 2017
Revised 8 May 2017
Accepted 23 May 2017



CrossMark

For numbered affiliations see end of article.

Correspondence to

Dr Laura Oakley;
laura.oakley@ishtm.ac.uk

ABSTRACT

Objective To investigate whether village-level urbanicity and lower level socioeconomic factors are associated with breastfeeding practices in transitioning rural communities in India.

Setting 29 villages in Ranga Reddy district, southern India between 2011 and 2014.

Participants 7848 children under 6 years identified via a cross-sectional household survey conducted as part of the Andhra Pradesh Children and Parents Study.

Outcome measures Two key indicators of optimal breastfeeding: termination of exclusive breastfeeding before 6 months and discontinuation of breastfeeding by 24 months. Village urbanicity was classified as low, medium or high according to satellite assessed night-light intensity.

Results Breastfeeding initiation was almost universal, and approximately two in three children were exclusively breastfed to 6 months and a similar proportion breastfed to 24 months. Using multilevel logistic regression, increasing urbanicity was associated with breastfeeding discontinuation before 24 months (medium urbanicity OR 1.45, 95% CI 0.71 to 2.96; high urbanicity OR 2.96, 95% CI 1.45 to 6.05) but not with early (<6 months) termination of exclusive breastfeeding. Increased maternal education was independently associated with both measures of suboptimal breastfeeding, and higher household socioeconomic position was associated with early termination of exclusive breastfeeding.

Conclusion In this transitional Indian rural community, early stage urbanicity was associated with a shorter duration of breastfeeding. Closer surveillance of changes in breastfeeding practices alongside appropriate intervention strategies are recommended for emerging economies.

INTRODUCTION

The promotion of breastfeeding is one of the three interventions identified as having the largest potential impact on global child

Strengths and limitations of this study

- Previous studies have investigated the association between urbanisation and breastfeeding using the urban–rural dichotomy.
- We used data from a large rural cohort in southern India that is currently undergoing rapid and uneven urbanisation due to its proximity to a major urban centre.
- The use of night-time light intensity data as an indicator of urbanicity allowed us to examine subtler changes in breastfeeding practices along the urban–rural continuum.
- Sixteen per cent of children were excluded from the analysis due to missing information on breastfeeding practices.
- We relied on maternal retrospective recall of breastfeeding events for our outcome measurement.

death.¹ Optimal breastfeeding is defined by the WHO as early breastfeeding initiation, exclusive breastfeeding (EBF) to 6 months and continued breastfeeding to 2 years or beyond alongside appropriate complementary feeding. Many low-income and middle-income countries (LMICs) have a strong tradition of near universal and prolonged breastfeeding,^{2 3} though EBF to 6 months (hereafter referred to simply as ‘exclusive breastfeeding’) is less common. A small increase in the global proportion of children exclusively breastfed between 1995 and 2010 has been reported, but the overall proportion (40%) still falls strikingly short of universal coverage and obscures differences in country-specific trends.⁴



Many LMICs are currently experiencing a rapid increase in the proportion of people living in built-up areas, and the social, cultural and economic changes associated with this process of urbanisation have the potential to impact on traditional breastfeeding practices. Direct threats to optimal breastfeeding include early introduction of other liquids and inappropriate supplementation with solid or semisolid foods. These behaviours may be influenced by changing social norms, for example, increasing numbers of mothers working outside the home. Of all positive health behaviours, breastfeeding is one of the few more prevalent in LMICs compared with high-income countries.³ Within LMICs, this trend is mirrored by a higher prevalence of suboptimal breastfeeding in urban areas compared with rural areas⁵: a trend also observed in India^{6–8} alongside variation by various socio-economic indicators.^{6–10} Although the high-level urban–rural comparison is of interest, there may also be subtler changes in breastfeeding practices along the urban–rural continuum given the periurban effects on villages close to urban centres. These changes can potentially be investigated by using a measure of ‘urbanicity’ that aims to assess the extent of urbanisation in a given area. A number of different indicators of urbanicity have evolved, including the use of remote light sensing^{11 12} and multi-component scales.^{13 14} The early identification of changes in breastfeeding practices accompanying the urbanicity transition—and an understanding of the underlying mechanisms—are necessary for informing appropriate interventions to protect traditionally positive breastfeeding practices in transitioning communities.

The Andhra Pradesh Children and Parents Study (APCAPS) is a rural sociodemographic cohort in southern India that is currently undergoing rapid and uneven urbanisation due to its proximity to a major urban centre (Hyderabad), providing a unique opportunity to examine the association between early stage urbanicity and breastfeeding practices.

METHODS

Study design

APCAPS is an intergenerational cohort originally established to study the long-term effects of early-life undernutrition on risk of cardiovascular disease and subsequently expanded to include transgenerational influences of other environmental and genetic factors on chronic diseases in transitioning rural India.

The original cohort is based on the participants in the Hyderabad Nutrition Trial conducted in 1987–1990 in 29 villages approximately 50–100 km from Hyderabad in Telangana state (formally Andhra Pradesh), southern India.¹⁵ The dataset used in this analysis is based on a cross-sectional household survey conducted between 2011 and 2014 in the study villages. All households (household defined as a group of people living in the same residence and sharing a common kitchen) in the study villages were visited by fieldworkers, and sociodemographic

information was collected on each household. In addition, a basic health profile was collected for each child under 6 years of age, comprising information on infant feeding (colostrum intake, total duration of breastfeeding and age of onset of weaning), immunisation and anthropometric measurements. Fieldworkers made repeated visits to households to maximise response and to clarify inconsistencies in collected data. Data were collected from 23 314 households in total, of which 5968 (25.6%) included at least one child under 6 years.

The study received approval from the ethics committees of the National Institute of Nutrition (Hyderabad, India) and London School of Hygiene and Tropical Medicine (London, UK). Approval was also sought from the Indian Council for Medical Research and the village heads and their committees in each of the study villages. Written informed consent (or witnessed thumbprint if illiterate) was obtained from the participants prior to their inclusion in the study.

Breastfeeding outcomes and explanatory variables

Two breastfeeding outcomes were used in this analysis: termination of EBF before 6 months and discontinuation of breastfeeding before 24 months. These outcomes reflect failure to achieve two of the specific WHO recommendations for optimum feeding practices (EBF to 6 months and continued breastfeeding to 2 years).¹⁶ As part of the basic health profile for children compiled for children under 6 in the household survey, mothers were asked to report the total duration of breastfeeding (in months), and the age (in months) at onset of weaning. ‘Weaning’ was defined by fieldworkers as the age at which the child was given anything other than mother’s milk, that is, age at initiation of complementary feeding. A copy of the questions used in the survey is provided as a supplementary figure (see online supplementary figure S1).

Our primary explanatory factor was urbanicity, measured using remotely sensed village-level night-time light intensity (NTLI) scores, as these are objective, unbiased and easily available over wide areas. Although this analysis represents the first application of NTLI data to the APCAPS population, NTLI data are increasingly being used as an area-based indicator of socioeconomic development.^{11 12} The light that is included in the NTLI score include any outside lights, ranging from fires and gas flares to lights related to human settlements. Low-level lights such as from streets and car headlights can be observed if there is a sufficient number of sources, but indoor lights cannot be observed. NTLI scores were calculated for 2012 using the National Oceanic and Atmospheric Administration Stable Lights product that provides yearly average NTLI measures processed and filtered to remove events such as fires and lightening contamination by cloud or moon reflections and background noise, at a 1 km resolution. Scores for each village were calculated by summing the raw NTLI values over each village polygon (digitised using Bing Maps combined with GPS-based surveying by the field teams). The 1 km resolution NTLI data were



upscaled to 100 m resolution to allow more accurate estimation of the NTLI values covered by each polygon, as many villages are small and partially cover multiple 1 km grid cells.

NTLI scores for each village were validated against alternative urbanicity measurements (field worker ranking and a multicomponent urbanicity score based on household-level material assets and village-level availability of infrastructure and services) showing positive correlations (0.65 and 0.53, respectively). Study villages were ranked by their NTLI score and divided into tertiles to represent 'low' (10 villages), 'medium' (10 villages) and 'high' (nine villages) levels of urbanicity. The NTLI tertile scores matched the field worker ranking in 50% of the villages, and cases of disagreement between NTLI and field worker ranking, the latter was more conservative and ranked villages as medium urbanicity rather than high urbanicity. Only one village had a significant divergence between NTLI and fieldworker ranking.

In addition, we investigated mother-level socioeconomic factors that may be correlated with urbanicity: maternal education (no formal education, primary education, or secondary education and higher), maternal employment (paid work vs no paid work) and a household level standard of living index (SLI). Asset-based SLIs have been established as a valid proxy measure of household wealth.¹⁷ We generated an SLI score for each household, calculated by using information on household assets including house and land ownership, characteristics of the home (electricity, water pump, separate kitchen and separate toilet) and ownership of various assets (tractor, radio, AC, washing machine, bore hole, telephone, TV, fridge, bicycle, two wheeler, four wheeler, bank account, animal cart, sofa, cot/bed, mattress and table). Principal component analysis was used to determine the weights for each component in the index,¹⁸ and households were divided into quintiles according to their weighted score. We also report data on a number of other factors likely to be associated with breastfeeding practices: sex of child, birth order, maternal age (grouped) and household composition (joint/extended or nuclear).

Statistical analysis

We included in the analysis all children under 6 years who were breastfed at least once and for whom information was available on feeding history. The analysis investigating termination of EBF before 6 months was restricted to children 6 months or older at the time of survey, and correspondingly only those children aged 24 months or older were included in the analysis of discontinuation of breastfeeding before 24 months. A small proportion of children (3%) had missing information on one or more variables of interest and were excluded.

We hypothesised that urbanicity would be associated with less favourable breastfeeding practices. This could operate through at least two different indirect pathways (see [figure 1](#)): through increasing individual-level employment, education or assets so that households

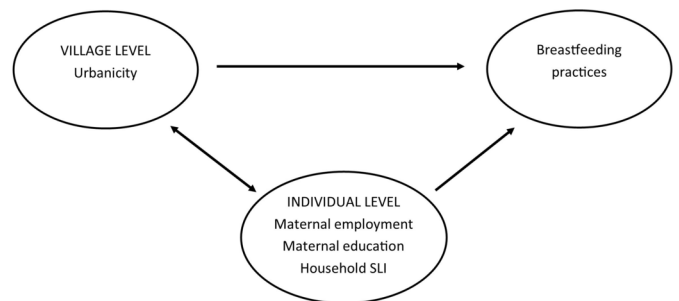


Figure 1 Model of the association between village level urbanicity, individual level socioeconomic indicators and breastfeeding practices.

are less likely to maintain breastfeeding, or due to more urbanised villages have a different 'collective' attitude to breastfeeding. We investigated these hypotheses by using multilevel logistic regression modelling with children (level 1) nested within mothers (level 2, max n=5477) nested within villages (level 3, n=29). This approach allowed us to model the variation in breastfeeding outcomes at each level (random effects) and to estimate the effect of specific mother and village-level factors on breastfeeding practices (fixed effects). We initially fitted a null model (model 1) for each of the two outcomes with random intercepts only in order to estimate the baseline between-mother and between-village variance. We then fitted a series of models for each breastfeeding outcome, adding covariates as fixed effects to the included random effects, where fixed effects were interpreted as the average effect on the specified breastfeeding outcome across all mothers and villages. These models included individual demographic factors and mother-level socioeconomic indicators (model 2), individual demographic factors and village-level urbanicity (model 3) and all variables (model 4). Due to the correlation between socioeconomic indicators and urbanicity, we considered estimates from model three our main results. Proportional change in variance was calculated as a measure of change in mother-level (level 2) and village-level (level 3) variance between the null model and subsequent models, and (for village-level variance only) the measure of change between a model with (model 4) and without (model 2) the village-level urbanicity variable included.

Estimates of the association between mother-level socioeconomic variables and breastfeeding outcomes were derived from model 2 (adjusted for individual-level demographic variables, but not urbanicity).

We hypothesised a priori that the association between village-level urbanicity and breastfeeding may vary by household SLI and maternal education. We investigated these cross-level interactions in further models (for SLI, comparing the richest two quintiles to the three poorest quintiles; for education, comparing secondary education vs no or primary education).

All statistical analyses were conducted using Stata version 14.

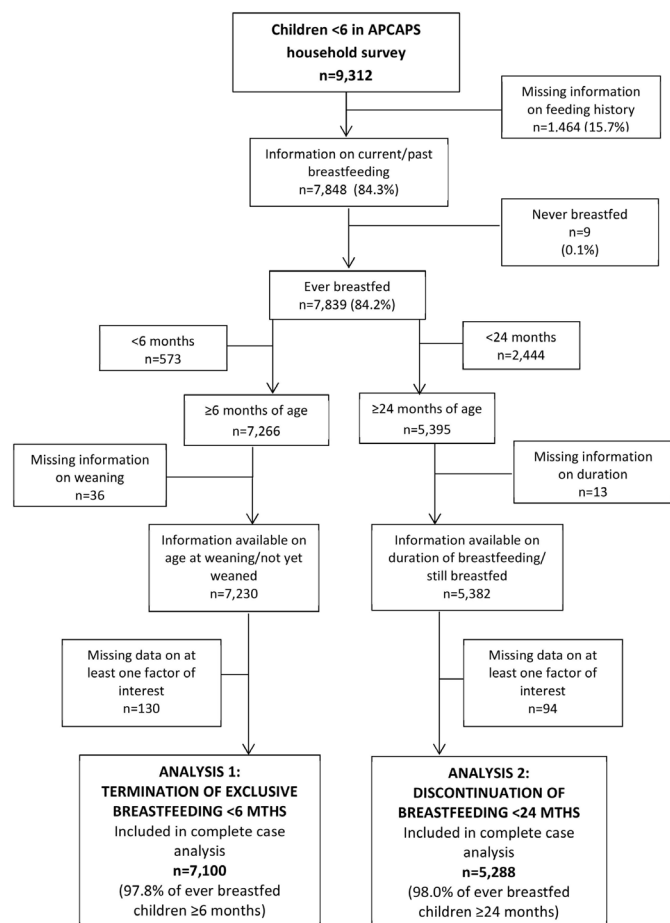


Figure 2 Flow chart of how samples for the two breastfeeding indicators were reached.

RESULTS

Characteristics of the sample

Information on breastfeeding was available on a total of 7848 children (5390 households), 99% (n=7839) of whom were breastfed at least once (figure 2).

The characteristics of ever-breastfed children by urbanicity of village are presented in table 1. There was little variation in infant sex, birth order or maternal age by urbanicity of village. Children residing in villages classified as more urbanised had mothers that were more likely to have been educated to secondary level, less likely to have mothers in paid employment and a higher standard of living. Joint/extended families were slightly less prevalent in high urbanicity villages.

Termination of exclusive breastfeeding by 6 months

Among the 7142 children no longer exclusively breastfed (88 children ≥ 6 months were still exclusively breastfed at the time of survey), the mean age at termination of EBF was 6.1 months (SD 1.8), median 6.0 months and IQR 5–6 months. One-third of children (33.5%, n=2420) were EBF for a period of less than 6 months (table 1).

Fixed effects

There was no statistically significant trend regarding early termination of EBF and village level urbanicity.

The prevalence of early termination of EBF was lowest in medium urbanicity villages (27.2%), higher in lower urbanicity villages (33.6%) and highest in high urbanicity villages (36.5%). In multivariable analysis, there was no evidence that urbanicity was associated with termination of EBF by 6 months (model 3, table 2), with little change in estimates after the addition of demographic and socio-economic covariates to the model.

After adjustment for other individual-level and mother-level covariates, both children of mothers with primary education and children of mothers with secondary education were more likely to be EBF for less than 6 months when compared with children of mothers with no formal education (primary education: OR 3.37, 95% CI 2.13 to 5.31; secondary education: OR 1.69, 95% CI 1.12 to 2.54; model 2, table 2). Increasing SLI quintile was associated with up to twice the odds of early termination of EBF compared with children from the poorest households (richest quintile OR 2.11, 95% CI 1.22 to 3.63; p value for trend=0.003). There was some evidence that maternal employment was also associated with early termination of EBF (OR 1.43, 95% CI 1.00 to 2.03). The estimates for socioeconomic variables did not change with the addition of urbanicity to the model.

Interaction effects

There was no evidence of interaction between urbanicity and either household SLI or maternal education.

Random effects

There was statistically significant unexplained variance estimates at both the mother and village level (model 1, table 1). Unexplained variability was consistently higher at the mother level compared with the village level. The addition of individual level parameters resulted in a slight decline in community-level variation (variance 1.50 and 1.44 in models 1 and 2, respectively). There was a further decline in village-level variance when the urbanicity variable was added to the model (variance 1.32 in model 4). Comparing the village-level variance between model 2 and model 4 suggests that 8.5% of the observed village-level variation can be explained by urbanicity.

Discontinuation of breastfeeding by 24 months

At the time of survey, 784 children aged ≥ 24 months were still being breastfed. Among those children no longer breastfed, the mean and median age at discontinuation of breastfeeding was 21.4 (SD 8.5) and 24 months, respectively, and the IQR was 15–24 months. Nearly 4 in 10 children (37.8%, n=2037) were breastfed for less than 24 months in total.

Fixed effects

Discontinuation of breastfeeding by 24 months was more common in high urbanicity villages (42.1%) and least common in low urbanicity villages (29.6%). After adjustment for individual-level demographic factors, high urbanicity was associated with increased odds of breastfeeding discontinuation before 24 months (OR 2.64, 95% CI 1.29

Table 1 Characteristics of ever-breastfed children under six in the APCAPS household survey, by village urbanicity tertile (n=7839)

	Urbanicity (measured by night-time light intensity)						All		
	High tertile 1 (n=4276)		Medium tertile 2 (n=2082)		Low tertile 3 (n=1476)				
	n	(%)	n	(%)	n	(%)		n	(%)
Exclusive breastfeeding ≥6 months*	Yes	2495	(63.5)	1400	(72.8)	915	(66.4)	4810	(66.5)
	No	1436	(36.5)	522	(27.2)	462	(33.6)	2420	(33.5)
Continued breastfeeding ≥24 months†	Yes	1701	(57.9)	927	(65.0)	717	(70.4)	3945	(62.2)
	No	1236	(42.1)	499	(35.0)	302	(29.6)	2037	(37.8)
Infant sex	Male	2189	(51.2)	1069	(51.2)	748	(50.5)	4006	(51.1)
	Female	2087	(48.8)	1013	(48.7)	733	(49.5)	3833	(48.9)
Age of child at survey	0–1	1337	(31.3)	650	(31.2)	457	(30.9)	2444	(31.2)
	2–3	1520	(35.5)	718	(34.5)	535	(36.1)	2773	(35.4)
	4–5	1419	(33.2)	714	(34.3)	489	(33.0)	2622	(33.4)
Birth order	1	1824	(43.1)	883	(42.7)	607	(41.0)	3314	(42.6)
	2	1667	(39.4)	798	(38.6)	588	(39.8)	3053	(39.2)
	≥3	743	(17.5)	389	(18.8)	284	(19.2)	1416	(18.2)
	missing	42		12		2		56	
	mean (SD)	1.79	(0.85)	1.80	(0.85)	1.82	(0.85)	1.80	(0.85)
	<20	737	(17.3)	364	(17.6)	276	(18.6)	1377	(17.6)
Age of mother at birth	20–24	2410	(56.5)	1238	(59.6)	862	(57.7)	4510	(57.7)
	25–29	917	(22.1)	393	(19.0)	288	(20.2)	1598	(20.2)
	30+	198	(44.6)	78	(3.8)	54	(3.6)	330	(4.2)
	missing	14		9		1		24	
mean (SD)	22.9	(3.6)	22.7	(3.4)	22.7	(3.5)	22.8	(3.5)	
Family structure	Nuclear	2866	(67.6)	1306	(63.7)	942	(64.0)	5114	(65.9)
	Joint/extended	1371	(32.4)	745	(36.3)	530	(36.0)	2646	(34.1)
	missing	39		31		9		79	
Maternal education	No formal schooling	1054	(24.7)	663	(32.0)	558	(37.7)	2275	(29.1)
	Primary	880	(20.6)	390	(18.8)	284	(19.2)	1554	(19.9)
	Secondary+	2329	(54.6)	1022	(49.3)	638	(43.1)	3989	(51.0)
	missing	13		7		1		21	
Maternal employment	Not working	3144	(73.8)	1342	(64.7)	815	(55.0)	5301	(67.8)
	Working	1119	(26.2)	733	(35.3)	666	(45.0)	2518	(32.2)
	missing	13		7		0		20	

Continued

Table 1 Continued

Standard of living (SLI) index	Urbanicity (measured by night-time light intensity)						All	
	High tertile 1 (n=4276)		Medium tertile 2 (n=2082)		Low tertile 3 (n=1476)		n	n (%)
	n	(%)	n	(%)	n	(%)		
Poorest	611	(14.3)	318	(15.3)	242	(16.3)	1171	(14.9)
Poorer	736	(17.2)	422	(20.3)	288	(19.4)	1446	(18.5)
Middle	816	(19.1)	458	(22.0)	378	(25.5)	1652	(21.1)
Richer	964	(22.5)	497	(23.9)	314	(21.2)	1775	(22.6)
Richest	1148	(26.9)	386	(18.5)	259	(17.5)	1793	(22.9)
missing	1		1		0		2	

*Restricted to ever-breastfed infants aged at least 6 months not yet weaned/with age at weaning (n=7230).

†Restricted to ever-breastfed infants aged at least 24 months still breastfed/with age at cessation of breastfeeding (figure 3) (n=5382).

to 5.42; model 3, table 3). The OR for medium urbanicity was slightly increased, though not statistically significant at $p < 0.05$ (OR 1.45, 95% CI 0.71 to 2.96; model 4), and there was evidence of a linear trend (p value 0.008). Additional adjustment for socioeconomic variables resulted in a slight reduction in the ORs (high urbanicity OR 2.64, 95% CI 1.29 to 5.42; medium urbanicity OR 1.35, 95% CI 0.66 to 2.79; model 4).

When compared with children of mothers with no formal schooling, children of mothers with secondary education were at significantly higher odds of breastfeeding discontinuation after adjustment for all demographic and socioeconomic factors (OR 1.63, 95% CI 1.23 to 2.16; model 2, table 3). Maternal employment was associated with a slight reduction in the odds of breastfeeding discontinuation before 24 months (OR 0.77, 95% CI 0.60 to 0.99). There was no evidence that SLI quintile was independently associated with breastfeeding discontinuation by 24 months. The inclusion of urbanicity in the model did not alter the socioeconomic estimates of effect.

Interaction effects

There was no evidence of interaction between urbanicity and mother-level socioeconomic factors (household SLI and maternal education).

Random effects

The random effects parameters for models investigating discontinuation of breastfeeding before 24 months are presented in table 3. In the null model (model 1), the proportion of residual variance attributable to mothers (level 2, 53.7%) was much higher than the variance attributable to villages (level 3, 8.5%). The addition of urbanicity to a model including individual and mother-level factors resulted in a decrease of 8.5% in village-level variance.

DISCUSSION

Summary of main findings

In this study, approximately two in three children were exclusively breastfed to 6 months and a similar proportion breastfed to 24 months. At the village level, high urbanicity was associated with breastfeeding discontinuation before 24 months, but there was no evidence that urbanicity was associated with early termination of EBF. At the mother level, increased maternal education was independently associated with both indicators of suboptimal breastfeeding and high SLI associated with an increased odds of EBF for less than 6 months. Maternal employment showed a variable association with breastfeeding. The residual variation in breastfeeding outcomes suggested greater heterogeneity within villages than between villages.

Consistency with previous studies

Our estimates of breastfeeding prevalence are largely consistent with those derived from other population-based

Table 2 Results of multilevel logistic regression models for the association between urbanicity or individual/household socioeconomic factors and termination of exclusive breastfeeding <6 months, among ever-breastfed children under six in the APCAPS household survey*.

Termination of exclusive breastfeeding <6 months (n=7100)													
	n	(%)	Unadjusted		Model 1 (null)		Model 2 (L1 confounders +L2SES)		Model 3 (L1 confounders +L3 urbanicity)		Model 4 (L1 confounders +L2SES +L3urbanicity)		
			OR	(95% CI)	OR	(95% CI)	OR	(95% CI)	OR	(95% CI)	OR	(95% CI)	
Fixed effects													
Maternal education	615	(29.1)	ref		ref							ref	
No formal schooling													
Primary	534	(38.6)	3.42	(2.23 to 5.25)			3.37	(2.13 to 5.31)				3.36	(2.13 to 5.30)
Secondary+	1231	(38.2)	1.82	(1.29 to 2.57)			1.69	(1.12 to 2.54)				1.69	(1.12 to 2.54)
Maternal employment	1584	(33.5)	ref		ref							ref	
Not working													
Working	796	(33.7)	0.94	(0.69 to 1.28)			1.43	(1.00 to 2.03)				1.43	(1.00 to 2.04)
SLI	280	(26.8)	ref		ref							ref	
Poorest													
Poorer	432	(32.9)	1.80	(1.07 to 3.02)			1.65	(0.97 to 2.81)				1.66	(0.98 to 2.82)
Middle	525	(35.1)	2.24	(1.36 to 3.71)			2.08	(1.24 to 3.50)				2.09	(1.24 to 3.51)
Richer	564	(35.1)	2.19	(1.33 to 3.59)			1.98	(1.17 to 3.34)				1.99	(1.18 to 3.35)
Richest	579	(35.3)	2.22	(1.35 to 3.65)			2.11	(1.22 to 3.63)				2.11	(1.23 to 3.64)
trend† (p value)			0.004				0.003					0.015	
Urbanicity	459	(33.7)	ref		ref							ref	
Low													
Medium	517	(27.5)	0.49	(0.15 to 1.56)					0.48	(0.15 to 1.54)		0.48	(0.15 to 1.51)
High	1404	(36.4)	1.10	(0.35 to 3.45)					1.09	(0.34 to 3.43)		1.04	(0.34 to 3.20)
trend† (p value)			0.87						0.89			0.91	
Random effects													
Level 2 (mothers)					13.619	(1.2202)	13.9036	(1.2454)	13.9888	(1.2531)	13.9072	1.2456	
variance (SE)					ref		-2.09		-2.71		-2.11		
PCV (compared with null)(%)‡													
Level 3 (villages)					1.4949	(0.4712)	1.4429	(0.4574)	1.3870	(0.4427)	1.3200	0.4235	
variance (SE)					ref		3.48		7.22		11.70		
PCV (compared with null)(%)‡													
PCV (compared with model 2)(%)§					-		ref		-		8.52		

*All ORs calculated using multilevel modelling and complete case sample (see figure 2).

†Test for trend: p value including variable as linear.

‡Proportional change in variance ((model 1 variance – model X variance)/model 1 variance)*100%.

§Proportional change in variance ((model 2 variance – model 4 variance)/model 2 variance)*100%. APCAPS, Andhra Pradesh Children and Parents Study; SLI, standard of living index.

**Table 3** Results of multilevel logistic regression models for the association between urbanicity or individual/household socioeconomic factors and discontinuation of continued breastfeeding <24 months, among ever-breastfed children under six in the APCAPS household survey*

Discontinuation of breastfeeding <24 months (n=5288)

	n	n (%)	Unadjusted		Model 1 (null)		Model 2 (L1 confounders +L2 SES)		Model 3 (L1 confounders +L3 urbanicity)		Model 4 (L1 confounders +L2 SES +L3 urbanicity)	
			OR	(95% CI)	OR	(95% CI)	OR	(95% CI)	OR	(95% CI)	OR	(95% CI)
Fixed effects												
Maternal education	521	(30.7)	ref		ref		ref		ref		ref	
Primary	395	(37.3)	1.48	(1.13 to 1.94)			1.21	(0.88 to 1.65)			1.21	(0.88 to 1.65)
Secondary+	1079	(42.5)	2.28	(1.82 to 2.87)			1.63	(1.23 to 2.16)			1.62	(1.22 to 2.15)
Maternal employment	1384	(41.3)	ref		ref		ref		ref		ref	
Working	611	(31.6)	0.55	(0.45 to 0.67)			0.77	(0.60 to 0.99)			0.78	(0.61 to 0.99)
Poorest	271	(34.6)	ref		ref		ref		ref		ref	
Poorer	370	(37.3)	1.38	(0.99 to 1.91)			1.18	(0.82 to 1.69)			1.17	(0.82 to 1.68)
Middle	374	(33.1)	1.07	(0.78 to 1.48)			0.86	(0.60 to 1.24)			0.86	(0.60 to 1.23)
Richer	467	(39.4)	1.5	(1.09 to 2.06)			1.05	(0.73 to 1.51)			1.04	(0.73 to 1.50)
Richest	513	(42.9)	1.75	(1.28 to 2.41)			1.09	(0.74 to 1.59)			1.08	(0.74 to 1.57)
Trend†(p value)			0.001				0.027				0.915	
Urbanicity	290	(29.5)	ref		ref		ref		ref		ref	
Low	494	(34.6)	1.40	(0.72 to 2.71)			1.45	(0.71 to 2.96)			1.35	(0.66 to 2.79)
Medium	1213	(42.2)	2.74	(1.42 to 5.28)			2.96	(1.45 to 6.05)			2.64	(1.29 to 5.42)
High			0.003				0.003				0.008	
Trend†(p value)			0.003				0.003				0.008	
Random effects												
Level 2 (mothers)					3.2070	(0.4847)	4.1838	(0.6347)	4.2895	(0.6445)	4.1793	(0.6342)
Variance (SE)					ref		ref		ref		ref	
PCV (compared with null)(%‡)							-30.46		-33.75		-30.32	
Level 3 (villages)					0.6036	(0.1966)	0.6677	(0.2221)	0.4942	(0.1718)	0.5029	(0.1739)
Variance (SE)					ref		ref		ref		ref	
PCV (compared with null)(%‡)							-10.62		18.12		16.68	
PCV (compared with model 2)(%‡)					-		ref		-		24.68	

*All ORs calculated using multilevel modelling and complete case sample (see figure 2).

†Test for trend: p value including variable as linear.

‡Proportional change in variance ((model 1 variance-model X variance)/model one variance)*100%.

§Proportional change in variance ((model 2 variance - model 4 variance)/model 2 variance)*100%. APCAPS, Andhra Pradesh Children and Parents Study; SLI, standard of living index.



studies in India. Early results from National Family Health Survey (NFHS-4) (2015–2016) Telangana state indicate that 67.3% of infants aged 0–6 months (at the time of survey) were exclusively breastfed,¹⁹ and a study of 600 mother–child pairs in Andhra Pradesh reports that 75% of infants aged 3–5 months were exclusively breastfed.²⁰ Some of the younger infants included in these two study samples will have ceased breastfeeding by 6 months, suggesting that our study sample has a slightly higher proportion of EBF to 6 months. The overall proportion of children breastfed until at least 24 months in our study was almost identical to an analysis of all-India NFHS-2 data: (62.2% vs 63%).⁶

Very few existing studies have investigated the association between urbanicity and breastfeeding. In one study based in the Philippines, Dahly and Adair reported that length of breastfeeding was negatively correlated with increasing urbanicity (using a multicomponent measure).¹³ The persisting association between high urbanicity and increased odds of breastfeeding discontinuation <24 months—after adjustment for lower level socioeconomic circumstances—reported in our study support the findings from Dahly and Adair.

Increasing urbanicity is associated with positive socioeconomic changes such as improved education for women and increased income and household wealth. A number of other studies from India and other LMICs have demonstrated a negative association between improved socioeconomic position and breastfeeding practices.^{6–8 21–24} We found similar results with regard to household SLI and increased maternal education, and early termination of EBF. One explanation for this trend could be the greater affordability and/or social desirability of commercial breastmilk substitutes. The association between education and early termination of EBF was strongest for primary education (primary education: OR 3.37, 95% CI 2.13 to 5.31; secondary education: OR 1.69, 95% CI 1.12 to 2.54). This suggests that while education in general is associated with a reduction in the length of EBF, higher levels of education partially ameliorate this effect. Interestingly, there was some evidence that maternal employment had a protective effect on breastfeeding discontinuation by 24 months, though the opposite trend was observed with regard to early cessation of EBF. There is some evidence of a U-shaped association between education and women's employment in India, with paid employment outside the home common among women with little or no formal education, lower among women with moderate levels of education and rising again with high levels of education.²⁵ Mothers in employment are likely to be a heterogeneous group, making it difficult to draw any firm conclusions about the association between paid employment and breastfeeding practices in this sample.

Strengths and limitations

The APCAPS cohort provides a unique opportunity to investigate current health behaviour and outcomes set

against the backdrop of rapid urbanisation and economic transition in rural India. While studies based on the high level urban–rural comparison may help to predict the impact of 'total' urbanisation on breastfeeding practices, they obscure the temporal emergence of subtler changes in the urban environment that may be amenable to intervention. The use of multilevel models enabled us to explore the role of factors at different levels: individual, mother and village.

Although the vast majority of all under 6s in the study villages were included in our analysis, 15.7% (n=1464) were excluded due to missing information on feeding history due to the mother living elsewhere, travelling or deceased. In a comparison of included and excluded children, there was no evidence that infant sex, infant age, number of under 6s living in the household or household SLI differed by missing status (see online supplementary table 1). A slightly higher proportion of excluded children resided in high urbanicity villages (p 0.09).

We relied on maternal recall of breastfeeding events for our outcome measurement. For the analysis of EBF at 6 months, the recall period ranged from 0 to 5.5 years, and for breastfeeding continuation at 24 months the recall period was 0–4 years. A review of 11 studies assessing the validity and reliability of maternal recall of breastfeeding concluded that maternal recall of breastfeeding duration is good, especially when the recall period is short (<3 years).²⁶ A more recent study, conducted in a population where breastfeeding initiation was near universal and duration long, found that even after 20 years, 64% of women recalled duration correctly to within 1 month (90% within 3 months).²⁷ However, there is some evidence that recall of age at introduction of complementary foods or non-breastmilk fluids is less accurate.²⁶ It is unclear whether any misclassification of breastfeeding behaviour is independent of other characteristics, but where differential misclassification has been suggested, more highly educated or wealthier mothers have tended to over-report breastfeeding.²⁸ Given that these characteristics were associated with suboptimal breastfeeding practices in this study, we may have underestimated any true difference in breastfeeding by sociodemographic characteristics.

Our measure of urbanicity was derived from NLTI data, information that is objective, regularly updated and free to use. Additionally, data on NLTI are available over a number of years and could be used in future studies to investigate trends in urbanicity over time. However, it must be noted that urbanicity is an ecological indicator and as such may not accurately reflect individual environment, particularly given that many women may travel regularly outside their home village for work or family reasons.

Implications

Nearly a quarter (24%) of all global under-five deaths occur in India.²⁹ In light of the failure to achieve the Millennium Development Goal infant mortality rate (IMR) target reduction,³⁰ a new target of reducing the

IMR to 20 per 1000 live births by 2020 has recently been proposed.³¹ Early results from the latest NFHS-4 data collected in Telegana state report a current IMR of 28 (20 in urban areas, 35 in rural areas).¹⁹ An increase in optimal breastfeeding practices will help to achieve improvements in infant survival, in addition to reducing the considerable burden of infant morbidity.^{3 32} India faces an ever-increasing epidemic of chronic disease in common with many other LMICs. Several studies have suggested that breastfeeding has a protective effect on long-term outcomes such as obesity and diabetes in adulthood,³³ though residual confounding is difficult to exclude,³⁴ and the most recent data from the PROBIT RCT do not support an association between breastfeeding and adiposity in late childhood.³⁵

A substantial proportion of infants in India are exclusively breastfed for less than the 6 months recommended by WHO,^{7 9 10} and a recent study reported that there was little change in the prevalence of EBF in India between 1992–1993 and 2005–2006⁸. The lack of country-specific holistic and coordinated policy programmes supporting breastfeeding has also been highlighted.³⁶ Therefore, research to further understand the determinants of suboptimal breastfeeding practices in India is timely.

Our findings suggest that in LMICs with a strong tradition of breastfeeding, negative changes in breastfeeding behaviour may be observed during early stages of the urbanicity transition. Reduced duration of breastfeeding among more educated mothers may be one of the earliest markers of this change. India is currently undergoing rapid urbanisation, with the proportion of the population living in towns and cities is set to increase from an estimated 28% in 2011 to 38% by 2026³⁷. Many more individuals live in areas which though traditionally described as rural are increasingly displaying many of the characteristics of urban areas. There is good evidence that breastfeeding behaviours are amenable to change through interventions delivered at the household and community level, as well as those targeting health systems.^{38 39} Intervention programmes to protect and promote breastfeeding should be considered in transitioning communities to counteract changes in breastfeeding practices, preferably targeted at those mothers identified as most at risk of suboptimal breastfeeding practices.

Author affiliations

¹Department of Non-communicable Disease Epidemiology, London School of Hygiene, London, UK

²Indian Institute of Public Health, Hyderabad, India

³Department of Anthropology, University of Delhi, New Delhi, India

⁴Centre for Control of Chronic Conditions, Public Health Foundation of India, New Delhi, India

⁵National Institute of Nutrition, Hyderabad, India

⁶Department of Geography and Environment, University of Southampton, Southampton, UK

⁷School of Social and Community Medicine, University of Bristol, Bristol, UK

Acknowledgements We wish to acknowledge our dedicated field teams led by Santhi Bhogadi and the study participants who made this study possible. We also acknowledge the contribution of Naveen Chittaluri and Ekta Jain to data processing

and management. We also thank Cono Ariti at the London School of Hygiene and Tropical Medicine (LSHTM) who provided statistical advice, and Poppy Mallinson (LSHTM) for assistance with calculating the SLI.

Contributors The study was conceived and designed by Shah Ebrahim (SE) and VG, and overall study management was by VG, GKW, KVRK and SK. Study tools were developed by VG, GKW and AA, and the study implemented by VG and GKW. Data management was provided by AA, GKW, SB and CB. SB was in charge of field management, SA and CB contributed to data collection and processing. RTW obtained and processed the NTLI data. LO, CB, SA and SK designed the analysis reported here. LO performed the statistical analysis, SK helped interpret the results and provided crucial input on manuscript preparation. LO, CB and SK were responsible for the initial draft of the manuscript. All authors contributed to the revision of the manuscript and reviewed and approved the final version.

Funding The APCAPS household survey was funded by a Wellcome Trust Strategic Award (Grant: 084674/Z, principal investigator Shah Ebrahim).

Competing interests None declared.

Patient consent Not needed.

Ethics approval Ethics committees at the National Institute of Nutrition (Hyderabad, India) and London School of Hygiene and Tropical Medicine (London, UK).

Provenance and peer review Not commissioned; externally peer reviewed.

Data sharing statement For details on how to access APCAPS data, please visit <http://apcaps.lshtm.ac.uk>.

Open Access This is an Open Access article distributed in accordance with the terms of the Creative Commons Attribution (CC BY 4.0) license, which permits others to distribute, remix, adapt and build upon this work, for commercial use, provided the original work is properly cited. See: <http://creativecommons.org/licenses/by/4.0/>

© Article author(s) (or their employer(s) unless otherwise stated in the text of the article) 2017. All rights reserved. No commercial use is permitted unless otherwise expressly granted.

REFERENCES

1. Bhutta ZA, Das JK, Rizvi A, *et al.* Evidence-based interventions for improvement of maternal and child nutrition: what can be done and at what cost? *Lancet* 2013;382:452–77.
2. Haggerty PA, Rutstein SO. *Breastfeeding and complementary infant feeding/postpartum effects (DHS Comparative Studies No. 30)*. Maryland, USA: Calverton, 1999.
3. Victora CG, Bahl R, Barros AJ, *et al.* Breastfeeding in the 21st century: epidemiology, mechanisms, and lifelong effect. *Lancet* 2016;387:475–90.
4. Cai X, Wardlaw T, Brown DW. Global trends in exclusive breastfeeding. *Int Breastfeed J* 2012;7:12–15.
5. Smith LC, Ruel MT, Ndiaye A. Why is Child Malnutrition Lower in Urban than in rural areas? evidence from 36 developing countries. *World Dev* 2005;33:1285–305.
6. Malhotra R, Noheria A, Amir O, *et al.* Determinants of termination of breastfeeding within the first 2 years of life in India: evidence from the National Family Health Survey-2. *Matern Child Nutr* 2008;4:181–93.
7. Patel A, Badhoniya N, Khadse S, *et al.* Infant and young child feeding indicators and determinants of poor feeding practices in India: secondary data analysis of National Family Health Survey 2005–06. *Food Nutr Bull* 2010;31:314–33.
8. Chandhiok N, Singh K, Sahu D, *et al.* Changes in exclusive breastfeeding practices and its determinants in India, 1992–2006: analysis of national survey data. *Int Breastfeed J* 2015;10:1–13.
9. Meshram II, A L, K V, *et al.* Impact of feeding and breastfeeding practices on the nutritional status of infants in a district of Andhra Pradesh, India. *Natl Med J India* 2012;25:201–6.
10. Srivastava NM, Awasthi S. Breastfeeding practices for newborns among urban poor in Lucknow, northern India: a prospective follow-up study. *Clin Epidemiol Glob Health* 2014;2:66–74.
11. Noor AM, Alegana VA, Gething PW, *et al.* Using remotely sensed night-time light as a proxy for poverty in Africa. *Popul Health Metr* 2008;6:1–13.
12. Tatem AJ, Hay SI. Measuring urbanization pattern and extent for malaria research: a review of remote sensing approaches. *J Urban Health* 2004;81:363–76.



13. Dahly DL, Adair LS. Quantifying the urban environment: a scale measure of urbanicity outperforms the urban-rural dichotomy. *Soc Sci Med* 2007;64:1407–19.
14. Cyril S, Oldroyd JC, Renzaho A. Urbanisation, urbanicity, and health: a systematic review of the reliability and validity of urbanicity scales. *BMC Public Health* 2013;13:513.
15. Kinra S, Radha Krishna KV, Kuper H, *et al.* Cohort profile: Andhra Pradesh Children and Parents Study (APCAPS). *Int J Epidemiol* 2014;43:1417–24.
16. World Health Organization. *Infant and young child nutrition: global Strategy for Infant and Young Child Feeding*. Geneva: World Health Organization, 2003.
17. Filmer D, Pritchett L. Estimating wealth effects without expenditure Data—Or tears: an application to educational enrollments in states of India. *Demography* 2001;32:115.
18. Vyas S, Kumaranayake L. Constructing socio-economic status indices: how to use principal components analysis. *Health Policy Plan* 2006;21:459–68.
19. International Institute for Population Sciences, Mumbai. National Family Health Survey-4 (2015-16): Telegana State Factsheet. Secondary National Family Health Survey-4 (2015-16): Telegana State Factsheet. 2016. http://rchiips.org/nfhs/pdf/NFHS4/TG_FactSheet.pdf
20. Shroff MR, Griffiths PL, Suchindran C, *et al.* Does maternal autonomy influence feeding practices and infant growth in rural India? *Soc Sci Med* 2011;73:447–55.
21. Nath DC, Goswami G. Determinants of breast-feeding patterns in an urban society of India. *Hum Biol* 1997;69:557–73.
22. Senarath U, Agho KE, Akram DE, *et al.* Comparisons of complementary feeding indicators and associated factors in children aged 6-23 months across five South Asian countries. *Matern Child Nutr* 2012;8:89–106.
23. Senarath U, Dibley MJ, Agho KE. Factors associated with nonexclusive breastfeeding in 5 east and southeast Asian countries: a multilevel analysis. *J Hum Lact* 2010;26:248–57.
24. Grummer-Strawn LM. The effect of changes in population characteristics on breastfeeding trends in fifteen developing countries. *Int J Epidemiol* 1996;25:94–102.
25. Kapsos S, Silberman A, Bourmpoula E. *Why is female labour force participation declining so sharply in India?* (ILO Research Paper No. 10). International Labour Office, 2014.
26. Li R, Scanlon KS, Serdula MK. The validity and reliability of maternal recall of breastfeeding practice. *Nutr Rev* 2005;63:103–10.
27. Natland ST, Andersen LF, Nilsen TI, *et al.* Maternal recall of breastfeeding duration twenty years after delivery. *BMC Med Res Methodol* 2012;12:179.
28. Huttly SR, Barros FC, Victora CG, *et al.* Do mothers overestimate breastfeeding duration? an example of recall Bias from a study in southern Brazil. *Am J Epidemiol* 1990;132:572–5.
29. *United Nations Inter-agency Group for Child Mortality Estimation. Levels & trends in Child Mortality: report*. New York: United Nations Children's Fund, 2012:2012.
30. You D, Hug L, Ejemyr S, *et al.* Global, regional, and national levels and trends in under-5 mortality between 1990 and 2015, with scenario-based projections to 2030: a systematic analysis by the UN Inter-agency group for Child Mortality estimation. *The Lancet* 2015;386:2275–86.
31. Kamath SS. Reducing the infant mortality rate of India to 20 by 2020: together we can do. *Indian Pediatr* 2015;52:193–4.
32. NEOVITA Study Group. Timing of initiation, patterns of breastfeeding, and infant survival: prospective analysis of pooled data from three randomised trials. *Lancet Glob Health* 2016;4:e266–e75.
33. Horta BL, Loret de Mola C, Victora CG. Long-term consequences of breastfeeding on cholesterol, obesity, systolic blood pressure and type 2 diabetes: a systematic review and meta-analysis. *Acta Paediatr* 2015;104:30–7.
34. Brion MJ, Lawlor DA, Matijasevich A, *et al.* What are the causal effects of breastfeeding on IQ, obesity and blood pressure? evidence from comparing high-income with middle-income cohorts. *Int J Epidemiol* 2011;40:670–80.
35. Martin RM, Patel R, Kramer MS, *et al.* Effects of promoting longer-term and exclusive breastfeeding on adiposity and insulin-like growth factor-I at age 11.5 years: a randomized trial. *JAMA* 2013;309:1005–13.
36. Gupta A, Dadhich JP, Faridi MM. Breastfeeding and complementary feeding as a public health intervention for child survival in India. *Indian J Pediatr* 2010;77:413–8.
37. Census of India 2011. *Population Projections for India and States 2001-2026: report of the Technical Group on Population Projections constituted by the National Commission on Population*. New Delhi: Office of the Registrar General and Census Commissioner, 2006.
38. Renfrew MJ, McCormick FM, Wade A, *et al.* Support for healthy breastfeeding mothers with healthy term babies. *Cochrane Database Syst Rev* 2012;5:CD001141–CD41.
39. Rollins NC, Bhandari N, Hajeerboy N, *et al.* Why invest, and what it will take to improve breastfeeding practices? *Lancet* 2016;387:491–504.

BMJ Open

Is increasing urbanicity associated with changes in breastfeeding duration in rural India? An analysis of cross-sectional household data from the Andhra Pradesh children and parents study

Laura Oakley, Christopher P Baker, Srivalli Addanki, Vipin Gupta, Gagandeep Kaur Walia, Aastha Aggarwal, Santhi Bhogadi, Bharati Kulkarni, Robin T Wilson, Dorairaj Prabhakaran, Yoav Ben-Shlomo, George Davey Smith, K V Radha Krishna and Sanjay Kinra

BMJ Open 2017 7:

doi: [10.1136/bmjopen-2017-016331](https://doi.org/10.1136/bmjopen-2017-016331)

Updated information and services can be found at:
<http://bmjopen.bmj.com/content/7/9/e016331>

These include:

References

This article cites 33 articles, 0 of which you can access for free at:
<http://bmjopen.bmj.com/content/7/9/e016331#ref-list-1>

Open Access

This is an Open Access article distributed in accordance with the terms of the Creative Commons Attribution (CC BY 4.0) license, which permits others to distribute, remix, adapt and build upon this work, for commercial use, provided the original work is properly cited. See:
<http://creativecommons.org/licenses/by/4.0/>

Email alerting service

Receive free email alerts when new articles cite this article. Sign up in the box at the top right corner of the online article.

Topic Collections

Articles on similar topics can be found in the following collections
[Epidemiology](#) (2248)

Notes

To request permissions go to:
<http://group.bmj.com/group/rights-licensing/permissions>

To order reprints go to:
<http://journals.bmj.com/cgi/reprintform>

To subscribe to BMJ go to:
<http://group.bmj.com/subscribe/>