

TABLE 1: CHARACTERISTICS OF PARTICIPANTS IN THE NATIONAL CHILD MEASUREMENT PROGRAMME (2012-13): BY AGE-SEX GROUP

Variable	4-5 Year olds N= 582,899		10-11 Year olds N= 485,362	
	Boys N= 297,887	Girls N= 285,012	Boys N= 248,783	Girls N= 236,579
Age (years), mean (SD)	5.0 (0.3)	5.0 (0.3)	10.9 (0.4)	10.9 (0.4)
Height (cm), mean (SD)	110.0 (5.1)	109.0 (5.1)	144.7 (7.0)	145.4 (7.5)
Weight (kg), median(LQ-UQ)	19.3 (17.7 - 21.1)	18.9 (17.3 - 20.8)	37.5 (32.9 - 44.1)	39.0 (33.5 - 46.2)
BMI (kg/m ²), median(LQ-UQ)	16.0 (15.2 - 16.9)	15.9 (15.1 - 17.0)	17.9 (16.3 - 20.4)	18.3 (16.5 - 21.0)
Variable, n (%)				
Ethnicity				
White	197691 (66.4)	188663 (66.2)	160278 (64.4)	151146 (64.0)
Black	14468 (4.9)	13970 (4.9)	11347 (4.6)	11319 (4.8)
Black African	9003 (3.0)	8520 (3.0)	6172 (2.5)	6154 (2.6)
Black Caribbean	2838 (1.0)	2788 (1.0)	2971 (1.2)	2927 (1.2)
Black - Other	2627 (0.9)	2662 (0.9)	2204 (0.9)	2238 (1.0)
South Asian	23191 (7.8)	22109 (7.8)	19406 (7.8)	18636 (7.9)
South Asian - Indian	7474 (2.5)	7200 (2.5)	5817 (2.3)	5493 (2.3)
South Asian - Pakistani	11502 (3.9)	10855 (3.8)	9675 (3.9)	9322 (3.9)
South Asian – Bangladeshi	4215 (1.4)	4054 (1.4)	3914 (1.6)	3821 (1.6)
Other Asian	6184 (2.1)	6062 (2.1)	4325 (1.7)	41745(1.8)
Other Ethnicity	18832 (6.3)	18168 (6.4)	12914 (5.2)	12547 (5.3)
Unknown	37521 (12.6)	36040 (12.7)	40513 (16.3)	38756 (16.4)
Region				
East Midlands	25212 (8.5)	23837 (8.4)	21496 (8.6)	20232 (8.6)
East of England	34041 (11.4)	32391 (11.4)	28195 (11.3)	26143 (11.1)
London	47613 (16.0)	46331 (16.3)	37346 (15.0)	36701 (15.5)
North East	12603 (4.2)	12509 (4.4)	10856 (4.4)	10432 (4.4)
North West	40997 (13.8)	38947 (13.7)	34734 (14.0)	32848 (13.9)
South East	45948 (15.4)	43628 (15.3)	38988 (15.7)	37052 (15.7)
South West	26481 (8.9)	25377 (8.9)	22370 (9.0)	21136 (8.9)
West Midlands	33353 (11.2)	31636 (11.1)	28430 (11.4)	26999 (11.4)
Yorkshire and The Humber	30590 (10.3)	29206 (10.3)	25026 (10.1)	23696 (10.0)
Unknown	1049 (0.4)	1150 (0.4)	1342 (0.5)	1340 (0.6)

Key:

SD = Standard deviation, LQ = Lower quartile, UQ = Upper quartile

TABLE 2: 4-5 YEAR OLD BOYS - SUMMARY OF BODY MASS INDEX AND WEIGHT CATEGORIES USING UK90 POPULATION THRESHOLDS* BY ETHNIC GROUP BEFORE AND AFTER ETHNIC ADJUSTMENTS TO BMI IN THE NATIONAL CHILD MEASUREMENT PROGRAMME (2012-13)

Ethnic Group	N	Median BMI, kg/m ² (LQ-UQ)	4-5 Year Old Boys Prevalence, % (95% CI)				
			Underweight	Healthy	Overweight	Obese	Overweight-Obese
Before BMI Adjustment							
White	197,691	16.0 (15.3-16.9)	0.7 (0.6 - 0.7)	76.3 (76.1 - 76.5)	14.1 (13.9 - 14.2)	8.9 (8.8 - 9.1)	23.0 (22.8 - 23.2)
Black	14,468	16.2 (15.3-17.3)	1.1 (0.9 - 1.3)	68.1 (67.3 - 68.8)	14.9 (14.4 - 15.5)	15.9 (15.3 - 16.5)	30.8 (30.1 - 31.6)
Black African	9,003	16.3 (15.4-17.4)	1.1 (0.8 - 1.3)	65.8 (64.8 - 66.7)	15.8 (15.0 - 16.5)	17.4 (16.6 - 18.2)	33.2 (32.2 - 34.2)
Black Caribbean	2,838	16.0 (15.2-17.0)	0.9 (0.6 - 1.3)	74.3 (72.7 - 76.0)	13.2 (12.0 - 14.5)	11.5 (10.3 - 12.7)	24.7 (23.1 - 26.3)
Black - Other	2,627	16.2 (15.3-17.2)	1.6 (1.1 - 2.0)	69.1 (67.4 - 70.9)	14.0 (12.7 - 15.3)	15.3 (13.9 - 16.7)	29.3 (27.6 - 31.1)
South Asian	23,191	15.5 (14.6-16.6)	4.3 (4.1 - 4.6)	76.3 (75.8 - 76.9)	8.3 (8.0 - 8.7)	11.0 (10.6 - 11.4)	19.3 (18.8 - 19.9)
South Asian - Indian	7,474	15.3 (14.4-16.3)	6.1 (5.5 - 6.6)	77.6 (76.7 - 78.6)	7.1 (6.6 - 7.7)	9.2 (8.5 - 9.8)	16.3 (15.5 - 17.1)
South Asian - Pakistani	11,502	15.5 (14.7-16.6)	3.7 (3.3 - 4.0)	75.9 (75.1 - 76.7)	9.1 (8.5 - 9.6)	11.4 (10.8 - 12.0)	20.4 (19.7 - 21.2)
South Asian -Bangladeshi	4,215	15.6 (14.7-16.7)	3.1 (0.1 - 0.2)	75.2 (73.9 - 76.5)	8.5 (7.7 - 9.4)	13.2 (12.2 - 14.2)	21.8 (20.5 - 23.0)
Other Asian	6,184	15.7 (14.9-16.8)	2.6 (2.2 - 3.0)	75.9 (74.8 - 76.9)	10.7 (9.9 - 11.5)	10.8 (10.1 - 11.6)	21.5 (20.5 - 22.5)
Other Ethnicity	18,832	15.9 (15.2-16.9)	1.2 (1.0 - 1.3)	75.4 (74.7 - 76.0)	12.9 (12.4 - 13.4)	10.6 (10.1 - 11.0)	23.5 (22.9 - 24.0)
Unknown	37,521	16.0 (15.2-16.9)	1.0 (0.9 - 1.1)	75.5 (75.1 - 76.0)	13.5 (13.1 - 13.8)	10.0 (9.7 - 10.3)	23.4 (23.0 - 23.9)
Overall	297,887	16.0 (15.2-16.9)	1.1 (1.1 - 1.1)	75.7 (75.6 - 75.9)	13.4 (13.3 - 13.6)	9.7 (9.6 - 9.8)	23.2 (23.0 - 23.3)
After BMI Adjustment **							
White							
Black		15.1 (14.4-15.9)	4.3 (4.0 - 4.7)	85.1 (84.5 - 85.7)	5.8 (5.4 - 6.1)	4.8 (4.4 - 5.1)	10.5 (10.0 - 11.0)
Black African		15.2 (14.4-16.9)	4.1 (3.7 - 4.5)	84.1 (83.4 - 84.9)	6.4 (5.9 - 6.9)	5.4 (4.9 - 5.8)	11.8 (11.1 - 12.4)
Black Caribbean		15.0 (14.3-15.7)	4.2 (3.4 - 4.9)	88.5 (87.4 - 89.7)	4.4 (3.6 - 5.1)	2.9 (2.3 - 3.5)	7.3 (6.3 - 8.3)
Black - Other		15.1 (14.4-15.9)	5.3 (4.4 - 6.1)	84.8 (83.5 - 86.2)	5.0 (4.2 - 5.8)	4.9 (4.0 - 5.7)	9.9 (8.7 - 11.0)
South Asian		16.6 (15.7-17.7)	0.2 (0.2 - 0.3)	60.4 (59.8 - 61.1)	18.4 (17.9 - 18.9)	21.0 (20.5 - 21.5)	39.4 (38.7 - 40.0)
South Asian - Indian		16.4 (15.5-17.5)	0.3 (0.2 - 0.4)	65.2 (64.1 - 66.3)	16.7 (15.9 - 17.5)	17.8 (16.9 - 18.7)	34.5 (33.4 - 35.6)
South Asian - Pakistani		16.6 (15.8-17.8)	0.2 (0.1 - 0.2)	58.5 (57.6 - 59.4)	19.2 (18.5 - 19.9)	22.2 (21.4 - 23.0)	41.4 (40.5 - 42.3)
South Asian - Bangladeshi		16.7 (15.8-17.9)	0.2 (0.1 - 0.4)	57.4 (55.9 - 58.9)	19.1 (18.0 - 20.3)	23.3 (22.0 - 24.5)	42.4 (40.9 - 43.9)
Other Asian							
Other Ethnicity							
Unknown							
Overall		16.0 (15.2 - 16.9)	0.9 (0.9 - 1.0)	75.3 (75.2 - 75.5)	13.8 (13.7 - 13.9)	10.0 (9.8 - 10.1)	23.7 (23.6 - 23.9)

* Population thresholds: Underweight: $\leq 2^{\text{nd}}$ centile, Healthy: $> 2^{\text{nd}}$ and $< 85^{\text{th}}$ centiles, Overweight: $\geq 85^{\text{th}}$ centile, Obese: $\geq 95^{\text{th}}$ centile Overweight-obese: $\geq 85^{\text{th}}$ centile

** Only ethnic groups affected by the BMI adjustments presented

TABLE 3: 4-5 YEAR OLD GIRLS - SUMMARY OF BODY MASS INDEX AND WEIGHT CATEGORIES USING UK90 POPULATION THRESHOLDS* BY ETHNIC GROUP BEFORE AND AFTER ETHNIC ADJUSTMENTS TO BMI IN THE NATIONAL CHILD MEASUREMENT PROGRAMME (2012-13)

Ethnic Group	N	Median BMI, KG/M ² (LQ-UQ)	4-5 Year old Girls Prevalence, % (95% CI)				Overweight-Obese
			Underweight	Healthy	Overweight	Obese	
Before BMI Adjustment							
White	188,663	16.0 (15.1-16.9)	0.4 (0.4 - 0.4)	78.7 (78.5 - 78.9)	12.8 (12.7 - 13.0)	8.1 (7.9 - 8.2)	20.9 (20.7 - 21.1)
Black	13,970	16.2 (15.2-17.4)	0.7 (0.5 - 0.8)	70.4 (69.7 - 71.2)	13.8 (13.2 - 14.4)	15.1 (14.5 - 15.7)	28.9 (28.2 - 29.7)
Black African	8,520	16.2 (15.2-17.5)	0.7 (0.5 - 0.8)	68.8 (67.8 - 69.8)	14.6 (13.8 - 15.3)	16.0 (15.2 - 16.8)	30.6 (29.6 - 31.5)
Black Caribbean	2,788	16.0 (15.0-17.3)	0.7 (0.4 - 1.0)	72.8 (71.2 - 74.5)	12.5 (11.3 - 13.7)	14.0 (12.7 - 15.3)	26.5 (24.8 - 28.1)
Black - Other	2,662	16.1 (15.1-17.3)	0.6 (0.3 - 0.9)	73.1 (71.4 - 74.8)	12.7 (11.5 - 14.0)	13.6 (12.3 - 14.9)	26.3 (24.6 - 28.0)
South Asian	22,109	15.4 (14.5-16.7)	2.6 (2.4 - 2.8)	78.5 (78.0 - 79.1)	9.1 (8.7 - 9.5)	9.8 (9.4 - 10.2)	18.9 (18.4 - 19.4)
South Asian - Indian	7,200	15.2 (14.3-16.4)	3.4 (3.0 - 3.8)	81.1 (80.2 - 82.0)	7.6 (7.0 - 8.2)	7.8 (7.2 - 8.5)	15.4 (14.6 - 16.3)
South Asian - Pakistani	10,855	15.5 (14.6-16.8)	2.3 (2.0 - 2.6)	77.7 (76.9 - 78.5)	9.8 (9.2 - 10.4)	10.2 (9.7 - 10.8)	20.0 (19.3 - 20.8)
South Asian - Bangladeshi	4,054	15.6 (14.6-16.9)	1.9 (0.1 - 0.2)	76.1 (74.8 - 77.4)	10.1 (9.1 - 11.0)	11.9 (10.9 - 12.9)	22.0 (20.7 - 23.3)
Other Asian	6,062	15.6 (14.7-16.8)	1.6 (1.3 - 2.0)	79.9 (78.9 - 80.9)	10.4 (9.6 - 11.2)	8.1 (7.4 - 8.8)	18.5 (17.5 - 19.5)
Other Ethnicity	18,168	15.9 (15.0-17.0)	0.9 (0.7 - 1.0)	77.4 (76.8 - 78.0)	12.0 (11.5 - 12.5)	9.7 (9.3 - 10.1)	21.7 (21.1 - 22.3)
Unknown	36,040	15.9 (15.1-17.0)	0.6 (0.5 - 0.7)	78.1 (77.6 - 78.5)	12.6 (12.2 - 12.9)	8.8 (8.5 - 9.1)	21.4 (20.9 - 21.8)
Overall	285,012	15.9 (15.2-17.0)	0.7 (0.6 - 0.7)	78.2 (78.0 - 78.3)	12.5 (12.3 - 12.6)	8.7 (8.6 - 8.8)	21.2 (21.0 - 21.8)
After BMI Adjustment **							
White							
Black		15.1 (14.3-16.1)	2.8 (2.6 - 3.1)	85.0 (84.4 - 85.6)	6.4 (6.0 - 6.8)	5.8 (5.4 - 6.1)	12.2 (11.6 - 12.7)
Black African		15.1 (14.3-16.2)	2.7 (2.4 - 3.0)	84.3 (83.6 - 85.1)	6.8 (6.3 - 7.4)	6.1 (5.6 - 6.6)	13.0 (12.2 - 13.7)
Black Caribbean		15.0 (14.2-16.0)	3.1 (2.5 - 3.8)	85.5 (84.2 - 86.8)	6.2 (5.3 - 7.1)	5.2 (4.4 - 6.0)	11.4 (10.2 - 12.5)
Black - Other		15.0 (14.2-16.0)	2.9 (2.3 - 3.6)	86.6 (85.3 - 87.9)	5.3 (4.5 - 6.2)	5.1 (4.3 - 6.0)	10.5 (9.3 - 11.6)
South Asian		16.5 (15.6-17.7)	0.2 (0.1 - 0.2)	65.0 (64.3 - 65.6)	17.2 (16.7 - 17.7)	17.7 (17.2 - 18.2)	34.9 (34.3 - 35.5)
South Asian - Indian		16.3 (15.4-17.5)	0.2 (0.1 - 0.3)	69.9 (68.9 - 71.0)	15.6 (14.7 - 16.4)	14.3 (13.5 - 15.1)	29.9 (28.8 - 30.9)
South Asian - Pakistani		16.6 (15.7-17.8)	0.2 (0.1 - 0.2)	62.7 (61.8 - 63.6)	18.3 (17.6 - 19.0)	18.8 (18.1 - 19.6)	37.2 (36.3 - 38.1)
South Asian - Bangladeshi		16.6 (15.7-18.0)	0.1 (0.0 - 0.2)	62.2 (60.7 - 63.7)	17.0 (15.8 - 18.2)	20.7 (19.4 - 21.9)	37.7 (36.2 - 39.2)
Other Asian							
Other Ethnicity							
Unknown							
Overall		16.0 (15.1-17.0)	0.6 (0.5 - 0.6)	77.8 (77.7 - 78.0)	12.7 (12.6 - 12.8)	8.9 (8.8 - 9.0)	21.6 (21.5 - 21.8)

* Population thresholds: Underweight: $\leq 2^{\text{nd}}$ centile, Healthy: $> 2^{\text{nd}}$ and $< 85^{\text{th}}$ centiles, Overweight: $\geq 85^{\text{th}}$ centile, Obese: $\geq 95^{\text{th}}$ centile Overweight-obese: $\geq 85^{\text{th}}$ centile

** Only ethnic groups affected by the BMI adjustments presented

TABLE 4: 10-11 YEAR OLD BOYS - SUMMARY OF BODY MASS INDEX AND WEIGHT CATEGORIES USING UK90 POPULATION THRESHOLDS* BY ETHNIC GROUP BEFORE AND AFTER ETHNIC ADJUSTMENTS TO BMI IN THE NATIONAL CHILD MEASUREMENT PROGRAMME (2012-13)

Ethnic Group	N	Median BMI, KG/M ² (LQ-UQ)	10-11 Year old Boys Prevalence, % (95 CI)				
			Underweight	Healthy	Overweight	Obese	Overweight-Obese
Before BMI Adjustment							
White	160,278	17.8 (16.3-20.1)	0.9 (0.8 - 0.9)	66.3 (66.1 - 66.5)	14.1 (14.0 - 14.3)	18.7 (18.5 - 18.9)	32.8 (32.6 - 33.1)
Black	11,347	18.5 (16.7-21.4)	0.9 (0.7 - 1.1)	56.9 (56.0 - 57.8)	15.4 (14.8 - 16.1)	26.8 (26.0 - 27.6)	42.2 (41.3 - 43.1)
Black African	6,172	18.6 (16.7-21.4)	1.0 (0.8 - 1.3)	55.8 (54.6 - 57.1)	15.9 (15.0 - 16.8)	27.2 (26.1 - 28.3)	43.1 (41.9 - 44.4)
Black Caribbean	2,971	18.3 (16.7-21.3)	0.6 (0.3 - 0.9)	58.5 (56.7 - 60.2)	14.6 (13.3 - 15.9)	26.3 (24.7 - 27.9)	40.9 (39.2 - 42.7)
Black - Other	2,204	18.5 (16.7-21.2)	1.0 (0.6 - 1.5)	57.6 (55.6 - 59.7)	15.1 (13.6 - 16.6)	26.2 (24.4 - 28.1)	41.3 (39.3 - 43.4)
South Asian	19,406	18.3 (16.0-21.4)	3.6 (3.4 - 3.9)	54.6 (53.9 - 55.3)	14.8 (14.3 - 15.3)	27.0 (26.4 - 27.6)	41.8 (41.1 - 42.5)
South Asian - Indian	5,817	18.1 (15.9-21.1)	4.6 (4.0 - 5.1)	55.9 (54.6 - 57.2)	14.8 (13.9 - 15.7)	24.7 (23.6 - 25.8)	39.5 (38.3 - 40.8)
South Asian - Pakistani	9,675	18.3 (16.0-21.4)	3.8 (3.5 - 4.2)	54.9 (53.9 - 55.9)	14.5 (13.8 - 15.2)	26.7 (25.9 - 27.6)	41.2 (40.2 - 42.2)
South Asian - Bangladeshi	3,914	18.8 (16.3-22.0)	1.8 (0.3 - 0.6)	51.8 (50.2 - 53.4)	15.4 (14.2 - 16.5)	31.0 (29.6 - 32.5)	46.4 (44.8 - 48.0)
Other Asian	4,325	18.4 (16.3-21.3)	2.4 (1.9 - 2.8)	55.2 (53.7 - 56.7)	15.8 (14.8 - 16.9)	26.6 (25.3 - 27.9)	42.4 (41.0 - 43.9)
Other Ethnicity	12,914	18.2 (16.4-20.9)	1.0 (0.9 - 1.2)	60.1 (59.3 - 60.9)	15.2 (14.6 - 15.9)	23.6 (22.9 - 24.4)	38.9 (38.0 - 39.7)
Unknown	40,513	17.9 (16.3-20.4)	1.0 (0.9 - 1.1)	64.3 (63.8 - 64.8)	14.5 (14.2 - 14.9)	20.1 (19.7 - 20.5)	34.7 (34.2 - 35.1)
Overall	248,783	17.9 (16.3-20.4)	1.1 (1.1 - 1.2)	64.1 (63.9 - 64.3)	14.4 (14.3 - 14.5)	20.4 (20.2 - 20.5)	34.7 (34.6 - 34.9)
After BMI Adjustment **							
White							
Black		17.6 (16.0-21.1)	2.1 (1.8 - 2.4)	66.0 (65.1 - 66.9)	13.4 (12.8 - 14.0)	18.5 (17.8 - 19.2)	31.9 (31.0 - 32.8)
Black African		17.7 (16.0-20.1)	2.2 (1.8 - 2.6)	65.6 (64.4 - 66.8)	13.5 (12.7 - 14.4)	18.7 (17.7 - 19.7)	32.2 (31.0 - 33.4)
Black Caribbean		17.4 (16.0-20.0)	1.7 (1.2 - 2.2)	66.3 (64.6 - 68.0)	13.0 (11.8 - 14.2)	18.9 (17.5 - 20.4)	31.9 (30.3 - 33.6)
Black - Other		17.5 (16.0-20.0)	2.4 (1.7 - 3.0)	66.7 (64.7 - 68.6)	13.7 (12.3 - 15.1)	17.3 (15.7 - 18.9)	31.0 (29.1 - 32.9)
South Asian		19.4 (17.1-22.6)	0.4 (0.3 - 0.5)	47.5 (46.8 - 48.2)	16.7 (16.2 - 17.3)	35.4 (34.7 - 36.1)	52.1 (51.4 - 52.9)
South Asian - Indian		19.2 (17.0-22.2)	0.4 (0.2 - 0.5)	49.5 (48.3 - 50.8)	16.8 (15.9 - 17.8)	33.3 (32.1 - 34.5)	50.1 (48.8 - 51.4)
South Asian - Pakistani		19.4 (17.1-22.5)	0.5 (0.3 - 0.6)	48.1 (47.1 - 49.1)	16.4 (15.7 - 17.2)	35.0 (34.1 - 36.0)	51.5 (50.5 - 52.5)
South Asian - Bangladeshi		19.9 (17.5-23.1)	0.2 (0.0 - 0.3)	42.9 (41.3 - 44.4)	17.4 (16.2 - 18.6)	39.5 (38.0 - 41.1)	56.9 (55.4 - 58.5)
Other Asian							
Other Ethnicity							
Unknown							
Overall		17.9 (16.4-20.4)	0.9 (0.9 - 1.0)	64.0 (63.8 - 64.2)	14.5 (14.3 - 14.6)	20.6 (20.5 - 20.8)	35.1 (34.9 - 35.3)

* Population thresholds: Underweight: $\leq 2^{\text{nd}}$ centile, Healthy: $> 2^{\text{nd}}$ and $< 85^{\text{th}}$ centiles, Overweight: $\geq 85^{\text{th}}$ centile, Obese: $\geq 95^{\text{th}}$ centile

** Only ethnic groups affected by the BMI adjustments presented

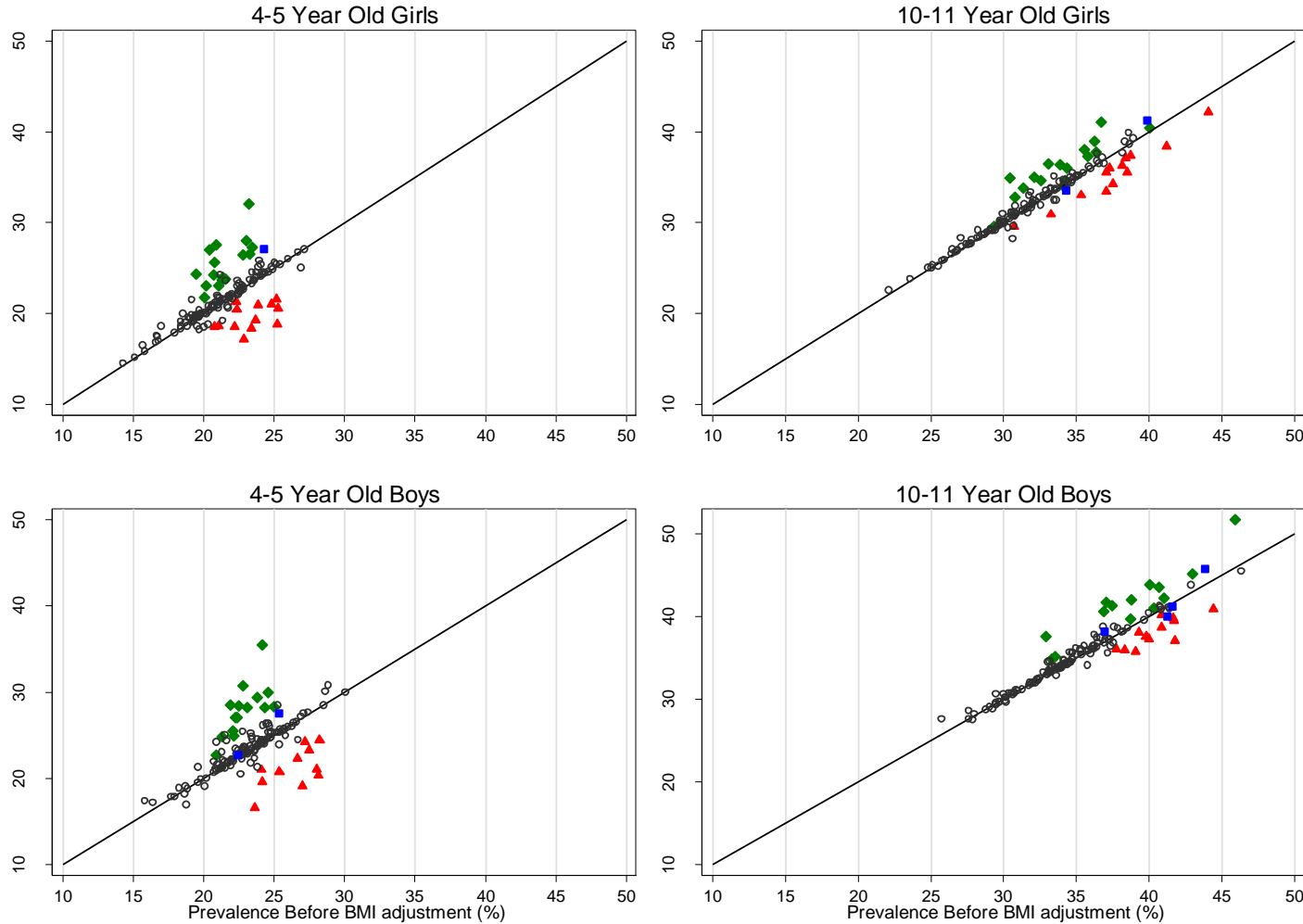
TABLE 5: 10-11 YEAR OLD GIRLS - SUMMARY OF BODY MASS INDEX AND WEIGHT CATEGORIES USING UK90 POPULATION THRESHOLDS* BY ETHNIC GROUP BEFORE AND AFTER ETHNIC ADJUSTMENTS TO BMI IN THE NATIONAL CHILD MEASUREMENT PROGRAMME (2012-13)

Ethnic Group	N	Median BMI, KG/M ² (LQ-UQ)	10-11 Year old Girls Prevalence, % (95 CI)				
			Underweight	Healthy	Overweight	Obese	Overweight-Obese
Before BMI Adjustment							
White	151,146	18.3 (16.5-20.8)	1.2 (1.1 - 1.3)	68.4 (68.1 - 68.6)	14.2 (14.0 - 14.4)	16.2 (16.0 - 16.4)	30.4 (30.2 - 30.7)
Black	11,319	19.6 (17.3-22.7)	1.3 (1.1 - 1.5)	54.1 (53.2 - 55.0)	17.2 (16.5 - 17.9)	27.4 (26.6 - 28.2)	44.6 (43.7 - 45.5)
Black African	6,154	19.6 (17.3-22.7)	1.4 (1.1 - 1.7)	53.5 (52.3 - 54.8)	17.5 (16.6 - 18.5)	27.5 (26.4 - 28.6)	45.0 (43.8 - 46.3)
Black Caribbean	2,927	19.6 (17.2-22.8)	1.0 (0.6 - 1.3)	54.2 (52.4 - 56.0)	16.3 (14.9 - 17.6)	28.6 (27.0 - 30.2)	44.9 (43.1 - 46.7)
Black - Other	2,238	19.4 (17.0-22.3)	1.4 (0.9 - 1.9)	55.5 (53.5 - 57.6)	17.5 (15.9 - 19.1)	25.6 (23.8 - 27.4)	43.1 (41.0 - 45.1)
South Asian	18,636	18.4 (16.1-21.4)	4.1 (3.8 - 4.4)	61.7 (61.0 - 62.4)	14.7 (14.2 - 15.2)	19.6 (19.0 - 20.1)	34.2 (33.5 - 34.9)
South Asian - Indian	5,493	18.0 (15.9-20.9)	5.2 (4.6 - 5.7)	64.4 (63.1 - 65.7)	14.3 (13.4 - 15.3)	16.1 (15.1 - 17.1)	30.4 (29.2 - 31.7)
South Asian - Pakistani	9,322	18.6 (16.2-21.6)	4.2 (3.8 - 4.6)	60.3 (59.3 - 61.3)	14.7 (14.0 - 15.4)	20.7 (19.9 - 21.5)	35.4 (34.5 - 36.4)
South Asian - Bangladeshi	3,821	18.7 (16.4-21.8)	2.2 (0.5 - 0.8)	61.1 (59.5 - 62.6)	15.0 (13.9 - 16.1)	21.7 (20.4 - 23.1)	36.7 (35.2 - 38.3)
Other Asian	41,745	18.2 (16.2-20.6)	2.7 (2.2 - 3.2)	68.3 (66.9 - 69.7)	14.1 (13.1 - 15.2)	14.8 (13.8 - 15.9)	29.0 (27.6 - 30.3)
Other Ethnicity	12,547	18.7 (16.6-21.6)	1.7 (1.5 - 2.0)	62.5 (61.7 - 63.4)	14.9 (14.3 - 15.5)	20.8 (20.1 - 21.5)	35.7 (34.9 - 36.6)
Unknown	38,756	18.3 (16.5-20.9)	1.5 (1.3 - 1.6)	67.4 (67.0 - 67.9)	14.2 (13.8 - 14.5)	16.9 (16.6 - 17.3)	31.1 (30.7 - 31.6)
Overall	236,579	18.3 (16.5-21.0)	1.5 (1.5 - 1.6)	66.7 (66.5 - 66.9)	14.4 (14.3 - 14.6)	17.3 (17.2 - 17.5)	31.8 (31.6 - 32.0)
After BMI Adjustment **							
White							
Black		18.6 (16.6-21.4)	2.2 (1.9 - 2.5)	63.0 (62.1 - 63.9)	15.7 (15.0 - 16.4)	19.1 (18.4 - 19.8)	34.8 (33.9 - 35.7)
Black African		18.7 (16.6-21.4)	2.3 (1.9 - 2.7)	62.6 (61.4 - 63.8)	16.0 (15.0 - 16.9)	19.1 (18.1 - 20.1)	35.1 (33.9 - 36.2)
Black Caribbean		18.6 (16.5-21.5)	1.7 (1.2 - 2.2)	62.7 (61.0 - 64.5)	15.4 (14.1 - 16.7)	20.2 (18.7 - 21.6)	35.6 (33.8 - 37.3)
Black - Other		18.4 (16.4-21.1)	2.4 (1.8 - 3.0)	64.5 (62.5 - 66.5)	15.4 (13.9 - 16.9)	17.7 (16.1 - 19.3)	33.1 (31.1 - 35.0)
South Asian		19.5 (17.2-22.5)	0.6 (0.5 - 0.7)	55.8 (55.1 - 56.5)	17.3 (16.7 - 17.8)	26.4 (25.7 - 27.0)	43.6 (42.9 - 44.3)
South Asian - Indian		19.1 (17.0-21.9)	0.8 (0.5 - 1.0)	59.6 (58.3 - 60.9)	17.1 (16.1 - 18.1)	22.6 (21.5 - 23.7)	39.7 (38.4 - 41.0)
South Asian - Pakistani		19.6 (17.2-22.6)	0.7 (0.5 - 0.8)	54.7 (53.7 - 55.7)	17.1 (16.4 - 17.9)	27.5 (26.6 - 28.4)	44.7 (43.7 - 45.7)
South Asian - Bangladeshi		19.8 (17.5-22.9)	0.3 (0.2 - 0.5)	53.0 (51.4 - 54.6)	17.7 (16.5 - 19.0)	28.9 (27.5 - 30.4)	46.7 (45.1 - 48.2)
Other Asian							
Other Ethnicity							
Unknown							
Overall		18.4 (16.5-21.1)	1.3 (1.3 - 1.3)	66.7 (66.5 - 66.8)	14.6 (14.4 - 14.7)	17.5 (17.3 - 17.6)	32.0 (31.9 - 32.2)

* Population thresholds: Underweight: $\leq 2^{\text{nd}}$ centile, Healthy: $> 2^{\text{nd}}$ and $< 85^{\text{th}}$ centiles, Overweight: $\geq 85^{\text{th}}$ centile, Obese: $\geq 95^{\text{th}}$ centile Overweight-obese: $\geq 85^{\text{th}}$ centile

** Only ethnic groups affected by the BMI adjustments presented

FIGURE 1: CORRELATION OF PREVALENCES OF OVERWEIGHT-OBESITY IN LOCAL AUTHORITIES BEFORE AND AFTER BMI ADJUSTMENTS BY AGE-SEX GROUP IN THE NATIONAL CHILD MEASUREMENT PROGRAMME (2012-13). LOCAL AUTHORITIES ARE COLOUR CODED BY ETHNIC COMPOSITION (SEE FOOTNOTE)



Legend: Open Circles = South Asian & Blacks < 20%, Green diamond = South Asian ≥ 20% & Blacks < 20%, Red triangle = Blacks ≥ 20% & South Asian < 20%, Blue square = South Asian & Blacks ≥ 20%
 Based on the Overweight-Obesity population thresholds: Overweight-obese: ≥85th centile
 Excluding areas with potential data quality issues and areas with less than 1000 individuals