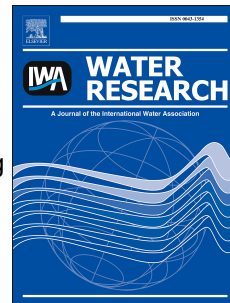


# Accepted Manuscript



The public health significance of latrines discharging to groundwater used for drinking

P. Ravenscroft, Z.H. Mahmud, M. Shafiqul Islam, A.K.M.Z. Hosain, A. Zahid, G.C. Saha, A.H.M. Zulfiquar Ali, Khairul Islam, S. Cairncross, J.D. Clemens, M. Sirajul Islam

PII: S0043-1354(17)30622-X

DOI: [10.1016/j.watres.2017.07.049](https://doi.org/10.1016/j.watres.2017.07.049)

Reference: WR 13092

To appear in: *Water Research*

Received Date: 18 April 2017

Revised Date: 17 June 2017

Accepted Date: 18 July 2017

Please cite this article as: Ravenscroft, P., Mahmud, Z.H., Islam, M.S., Hosain, A.K.M.Z., Zahid, A., Saha, G.C., Zulfiquar Ali, A.H.M., Islam, K., Cairncross, S., Clemens, J.D., Islam, M.S., The public health significance of latrines discharging to groundwater used for drinking, *Water Research* (2017), doi: 10.1016/j.watres.2017.07.049.

This is a PDF file of an unedited manuscript that has been accepted for publication. As a service to our customers we are providing this early version of the manuscript. The manuscript will undergo copyediting, typesetting, and review of the resulting proof before it is published in its final form. Please note that during the production process errors may be discovered which could affect the content, and all legal disclaimers that apply to the journal pertain.

1 Ravenscroft, P<sup>1</sup>., Z.H. Mahmud<sup>2</sup>, M. Shafiqul Islam<sup>2</sup>, A.K.M.Z. Hosain<sup>2</sup>, A. Zahid<sup>3</sup>, G.C. Saha<sup>4</sup>,  
2 A.H.M. Zulfiquar Ali<sup>5</sup>, Khairul Islam<sup>6</sup>, S. Cairncross<sup>7</sup>, J.D. Clemens<sup>2</sup> and M.Sirajul Islam<sup>2, §</sup>.

3  
4 **The Public Health Significance of Latrines Discharging to Groundwater used for Drinking**

5  
6  
7 <sup>1</sup> Independent Consultant, Cambridge, UK

8 <sup>2</sup> International Centre for Diarrhoeal Disease Research, Bangladesh (icddr,b), 68 Shaheed Tajuddin  
9 Ahmed Sarani, Mohakhali, Dhaka 1212, Bangladesh

10 <sup>3</sup> Bangladesh Water Development Board, Green Road, Dhaka

11 <sup>4</sup> Dhaka University of Engineering and Technology, Shimultoly Road, Gazipur, Bangladesh

12 <sup>5</sup> Department of Soil, Water & Environment, University of Dhaka, Dhaka 1000

13 <sup>6</sup> WaterAid Bangladesh, House 97/B, Road No 25, Block A, Dhaka 1213

14 <sup>7</sup> Department of Disease Control, London School of Hygiene and Tropical Medicine, Keppel Street,  
15 London WC1E 7HT

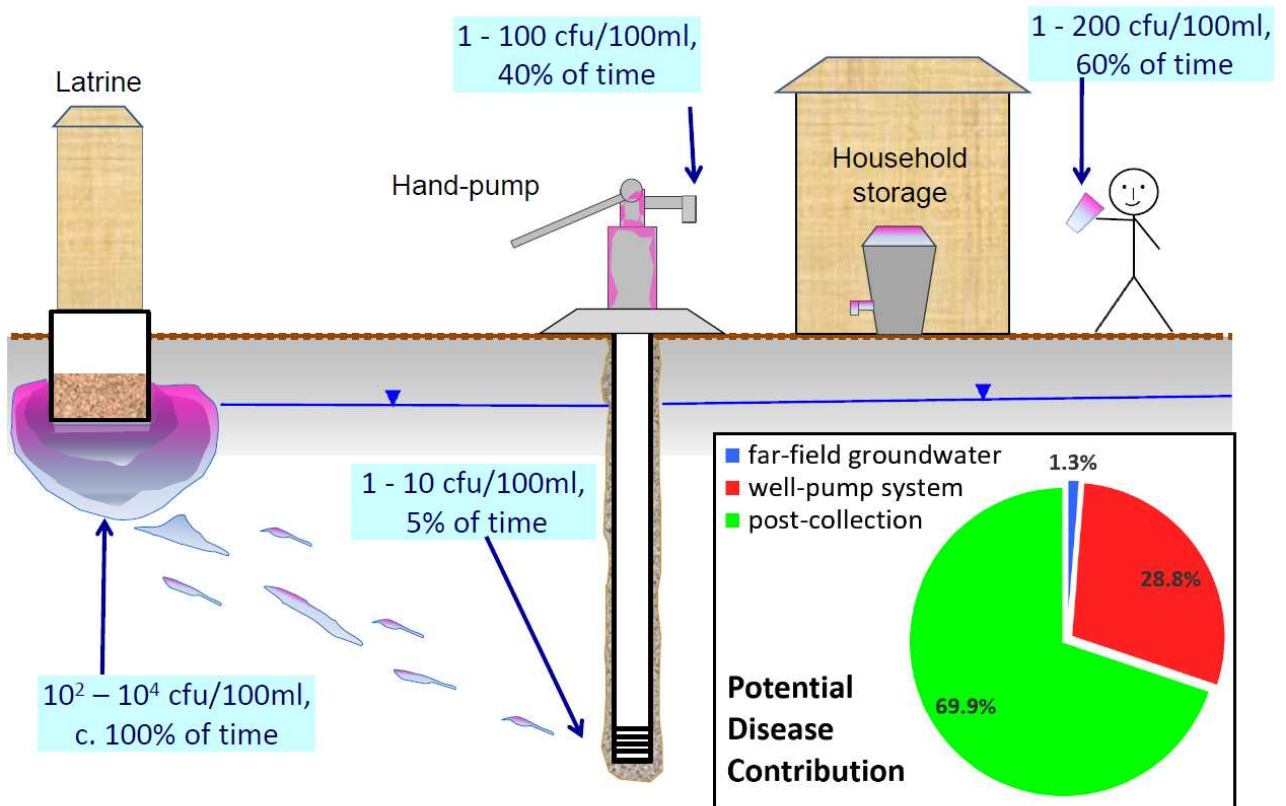
16  
17 <sup>§</sup> Corresponding author: [sislam@icddr.org](mailto:sislam@icddr.org)

**Abstract**

Faecal contamination of groundwater from pit latrines is widely perceived as a major threat to the safety of drinking water for several billion people in rural and peri-urban areas worldwide. On the floodplains of the Ganges-Brahmaputra-Meghna delta in Bangladesh, we constructed latrines and monitored piezometer nests monthly for two years. We detected faecal coliforms (FC) in 3.3 - 23.3% of samples at four sites. We differentiate a near-field, characterised by high concentrations and frequent, persistent and contiguous contamination in all directions, and a far-field characterised by rare, impersistent, discontinuous low-level detections in variable directions. Far-field FC concentrations at four sites exceeded 0 and 10 cfu/100ml in 2.4 - 9.6% and 0.2 - 2.3% of sampling events respectively. The lesser contamination of *in-situ* groundwater compared to water at the point-of-collection from domestic wells, which itself is less contaminated than at the point-of-consumption, demonstrates the importance of recontamination in the well-pump system. We present a conceptual model comprising four sub-pathways: the latrine-aquifer interface (near-field); groundwater flowing from latrine to well (far-field); the well-pump system; and post-collection handling and storage. Applying a hypothetical dose-response model suggests that 1 - 2% of the diarrhoeal disease burden from drinking water is derived from the aquifer, 29% from the well-pump system, and 70% from post-collection handling. The important implications are (i) that leakage from pit latrines is a minor contributor to faecal contamination of drinking water in alluvial-deltaic terrains; (ii) fears of increased groundwater pollution should not constrain expanding latrine coverage, and (iii) that more attention should be given to reducing contamination around the well-head.

**Keywords:**

Faecal coliforms; latrines; groundwater pollution; Bangladesh; drinking water; risk



## 52 INTRODUCTION

53 Graham and Polizzotto (2013) draw attention to the ‘*widespread global reliance on both pit latrines*  
54 *and groundwater ...*’ and estimate that 1.77 billion people worldwide use pit latrines, a figure that  
55 will increase in line with achieving Sustainable Development Goal (SDG) 6.2: safe sanitation for  
56 all. While expressing caution about the variable quality of previous studies of the risks of latrines to  
57 rural water supplies, they warn that areas with shallow groundwater and prone to flooding,  
58 conditions common in S and SE Asia, present the greatest risks to health. It is estimated that 38% of  
59 improved water sources globally are contaminated by faecal indicator bacteria (FIB; Bain et al.  
60 2014), and that untreated groundwater is a major source of enteric disease globally and that the  
61 proven disease burden is only ‘the tip of the iceberg’ (Murphy et al. 2017). Bangladesh is a country  
62 that conforms to this pattern: untreated groundwater supplies >90% of the rural population, with  
63 FIB detected in around 40% of all supplies at the point of collection (PoC), rising to about 60% at  
64 the point of use (PoU; Hoque 1998; Ravenscroft et al. 2014; BBS/UNICEF 2015). Increases in  
65 contamination from PoC to PoU have been noted elsewhere and already drives hygiene education  
66 programmes (e.g. Trevett et al. 2005; UNICEF 2012). The many reviews of the effects of on-site  
67 sanitation on groundwater quality (e.g. Lewis et al. 1982; Cave and Kolsky 1999; Lawrence et al.  
68 2001; Foppen and Schijven 2006; Graham and Polizzotto 2013 and references therein) draw heavily  
69 on short-term monitoring of existing water wells near existing latrines and equate, incorrectly we  
70 believe, the intrinsic quality of groundwater with the quality of the water collected from wells. The  
71 conventional wisdom that inadequate spacing of pit latrines and wells is a major contributor to  
72 faecal contamination of drinking water has long directed public health authorities to mandating  
73 spacing criteria, typically 10 to 50 m, although the scientific basis and efficacy of these rules are  
74 often open to question (Parker and Carlier, 2009; Graham and Polizzotto, 2013). We seek to show  
75 that the application of the precautionary principle to cases of uncertain attribution of the cause of  
76 faecal contamination in water wells leads to disproportionate attention being given to spacing as a  
77 control measure.

78

79 Concern over the severity of the risks of on-site sanitation polluting groundwater-sourced drinking  
80 water has fluctuated, mirroring renewed drives for safe water and sanitation such as the Millennium  
81 Development Goals, the SDG's and for example, India's Total Sanitation Campaign which aims to  
82 build 12 million latrines by 2019 but has been criticised for potentially increasing pollution of  
83 groundwater and drinking water. For example, on alluvial terrain in India's Odisha State, Daniels et  
84 al. (2016) report '*strong evidence of protozoa contamination of shallow groundwater from pour-  
85 flush latrines within 15m*' and conclude that contamination of groundwater used for drinking is  
86 correlated with faecal loading of latrines, literacy, livestock, damaged well-heads and antecedent  
87 rainfall. Daniels et al. (2016) predict that achieving 100% latrine coverage will result in a 1.9 – 4.1  
88 times increase in protozoan contamination. Odagiri et al. (2016) also in Odisha State and Sorensen  
89 et al. (2016) in Bihar State both predict increased microbial contamination of shallow groundwater  
90 from increased adoption of latrines, suggesting a trade-off between sanitation and water supply  
91 objectives (i.e. SDG 6.1 and 6.2).

92

93 There is a potential contradiction between the conventional views that, on the one hand, perceive  
94 groundwater as being intrinsically safe and, on the other hand, perceive groundwater as being  
95 intrinsically at risk from latrines, although this difference may be partly explained by pit latrines by-  
96 passing the soil zone. It is a widely accepted norm that the immediate vicinity of hand-pumped  
97 tubewells are vulnerable to pollution, and much effort is given to reducing this risk through sanitary  
98 inspections and their incorporation into Water Safety Plans (WHO 2011). Unfortunately, sanitary  
99 inspection scores have little ability to predict bacterial contamination of well water (e.g. Hoque  
100 1998; Luby et al. 2008; Ercumen et al. 2017; Misati et al. 2017). A possible explanation for this  
101 poor correlation is that the contents of the standard WHO sanitary inspection are necessary but not  
102 sufficient because it excludes factors such as well construction, the survival and growth of bacteria

103 inside pipes and pumps, and the use of dirty priming water (Ferguson et al. 2011; Hoque 1998;  
104 Knappett et al. 2012a).

105

106 The primary objectives of this study were to understand the migration of faecal bacteria away from  
107 latrines under different hydrogeological settings and thereby produce better guidelines for siting and  
108 construction, at least for alluvial terrains. However, recognising that the causes of faecal  
109 contamination of drinking water are more nuanced than simple spacing, we also sought to isolate  
110 factors such as operation and maintenance and hygiene practices from the migration of  
111 contaminants in groundwater. To do this, we constructed and monitored new latrines and dedicated  
112 piezometers at households with no existing latrine at four sites in rural Bangladesh monthly over  
113 two years. We interpret these results in the light of drinking water surveys conducted by ourselves  
114 and others and studies of alternative pollution pathways to assess the relative contributions of  
115 different sub-pathways from the latrine to the point of water consumption.

116

## 117 **METHODS AND MATERIALS**

118

### 119 **Study Sites**

120 Following a pilot study on older (Pleistocene) sediments of the Barind Tract and Holocene  
121 sediments of the Chittagong Coastal Plain (Islam et al. 2016; Table S1), we selected four (Phase 2)  
122 sites on the Ganges – Brahmaputra – Meghna delta to reflect the diversity of recent floodplain  
123 environments in Bangladesh (Fig 1; Brammer 2012; Rahman and Ravenscroft 2003). The village  
124 and household selection were carried out considering social and logistical factors as detailed by  
125 Islam et al. (2017a) and included the requirement that collaborating households did not already have  
126 their own latrine and that shallow groundwater was not contaminated by arsenic above the national  
127 standard (50 µg/L). At our study sites, domestic water supplies are drawn dominantly from  
128 manually-drilled, privately-owned tubewells a few tens of metres deep and equipped with suction-

129 mode (e.g. the UNICEF Nr 6) hand pumps. Most households use a latrine of the same type as  
130 constructed under the study; open defecation is rare at all sites. Pirganj, on the Tista Fan and  
131 Shambuganj on the Old Brahmaputra floodplain (Rangpur and Mymensingh districts respectively)  
132 have sandier, more permeable sediments with less organic matter and deeper water tables. Jajira  
133 (Shariatpur District) and Paikgachha (Khulna District) lie respectively on the River and the Tidal  
134 floodplains of the Ganges (Brammer 2012), formed of finer sediments, albeit with different internal  
135 sedimentary structures, and shallower water tables. All sites have surface aquitards 3 to 5 m thick  
136 within which the latrine was constructed. However, the grain sizes of the sediments to depths of 5m  
137 bgl differ: sandy at Pirganj and Shambuganj but dominated respectively by silt and clay at Jajira and  
138 Paikgachha (Fig S1). Only at Paikgachha (8m) is there a lower aquitard of sufficient thickness  
139 (> 0.5m) that might divide the upper 30 m of sediment into separate aquifers.

140

141 All sites are subject to a tropical monsoonal climate. Mean annual rainfall is typically around  
142 2000 mm, and mean annual temperature is about 25°C with monthly means ranging from 18 to  
143 30°C (Brammer 2012). There is significant pumping from shallow tubewells (tens of metres deep)  
144 for irrigation in the vicinity of the Shambuganj and Pirganj sites and may cause temporary changes  
145 in flow direction between February and April each year. No irrigation wells were identified that  
146 could affect either the Jajira or Paikgachha sites.

147

#### 148 **Monitoring Networks and Sampling and Analytical Protocols**

149 New pit latrines were manually excavated to a depth of 2.5 m and completed with 1.5 m diameter  
150 concrete rings as per local practice. At each site, between 25 and 38 PVC piezometers (with 38 mm  
151 diameter, 3 m long screens) were installed using the local manual-percussive technique (e.g. Ali  
152 2003) in a cruciform pattern in four layers at depths of 4 to 30 m and radial distances of 2 to 10 m.  
153 The first monitoring horizon was selected to be as close as practical to the water table to intercept  
154 any shallow pathway, should it exist, and was completed in a presumed low permeability (silt or



155 sandy silt) layer since none of the latrines discharged directly into an aquifer. The second  
156 monitoring horizon, typically 5 – 10 m bgl, was selected to represent water quality at top of the first  
157 aquifer. The third horizon was selected to identify any significant vertical migration of bacteria into  
158 the aquifer. The deepest monitoring horizon, typically 25 – 30 m bgl, was selected to represent the  
159 deepest credible depth for bacterial migration, or to represent water quality in a second aquifer if  
160 encountered. Immediately after completion, the borehole annulus was sealed from the surface with  
161 a sand-cement slurry, and in any lower aquitard by carefully dropping hand-rolled balls of bentonite  
162 clay, to prevent percolation of surface water or inter-aquifer leakage. The layout of piezometers was  
163 based on a conceptual site model developed from a test borehole, water features survey, estimation  
164 of groundwater flow direction(s), examination of land use and discussions with residents. Concerns  
165 over possible cross-contamination in the Pilot Study prompted a change in the sampling procedure  
166 from a conventional hand-pump to a peristaltic pump. Between and/or immediately before sampling  
167 each piezometer, the hoses were flushed with water was hot enough to sterile the tube. and the  
168 outside of the pipe was also properly cleaned.

169  
170 Water samples were collected in 500 ml autoclavable Nalgene plastic bottles which were  
171 autoclaved each time before sampling, and after sampling kept in insulated boxes with ice packs to  
172 maintain the temperature between 4 and 8 °C and transported to the Environmental Microbiology  
173 Laboratory of the International Centre for Diarrhoeal Disease Research, Bangladesh (icddr,b) at  
174 Dhaka. The collected water samples were analysed within 24 hours of collection following  
175 procedures described earlier (Islam et al. 2001, 2016). Analyses enumerated faecal coliforms (FC),  
176 *E. coli* and faecal streptococci; however, because the patterns of these parameters are essentially the  
177 same (Islam et al. 2017a) we restrict our presentation to faecal coliforms. Water samples were also  
178 tested in the icddr,b laboratory in Dhaka for pH and electrical conductivity monthly, and chloride  
179 and nitrate quarterly (Islam et al. 2017b). Sampling was conducted in 24, approximately monthly,  
180 sampling events. This interval is three times less than the putative maximum survival period of

181 FC's outside the gut (e.g. Lewis et al. 1982). During each sampling event, which required at least  
182 two days on site, the depth to groundwater was measured in every piezometer using a standard  
183 electrical dip meter. In categorising faecal risk, we follow the WHO (2011) classification where  
184 very low, low, medium, high and very high risk correspond to 0, 1-10, 11-100, 101-1000 and >1000  
185 cfu/100ml.

186

### 187 **Limitations**

188 This paper does not describe the latrine-derived chemical contamination by nitrate and chloride or  
189 other FIB, which are discussed by Islam et al. (2017a, b) who also present a detailed analysis of the  
190 environmental factors that explain intra- and inter-site variations and hence siting criteria. The study  
191 did not consider the subsurface transport of protozoa, viruses or pathogens in general, the influence  
192 of pit emptying, or household water treatment.

193

### 194 **RESULTS**

195 Lateral and vertical head differences in monthly measurements of groundwater elevation within  
196 sites were generally negligible, rarely exceeding a few centimetres and usually within the  
197 measurement error. However, differences between sites are significant (Fig 2). At Paikgachha, the  
198 most down-basin site where the grain size is finest, the piezometric surface at all depths was always  
199 above the base of the latrine. At Jajira, the water table rises above the base of the latrine for about  
200 half the year, whereas at the northern sites with sandy soil and subsoil, Shambuganj and Pirganj, the  
201 water table intersects the base of the latrine for a short period in the monsoon, if at all.

202

203 Analyses of faecal coliforms for each sampling event at each piezometer at each site are presented  
204 in the Supporting Information (SI S3) and summarised in Table 1 and Fig 3. The spatial and  
205 temporal distributions of FC are illustrated in Figures 4 and 5 and the Supporting Information (SI  
206 S4). From north to south, there are progressive increases in the overall detection rate (3.3% at

207 Pirganj and 23.3% at Paikgachha) and the proportions of samples with medium, high and very high  
208 levels of contamination. Everywhere the magnitude and frequency of FC detections decline rapidly  
209 with distance from the latrines. In the shallowest piezometers, at a radial distance of 2m, FC  
210 concentrations typically ranged between  $10^2$  and  $10^4$  cfu/100ml and almost always detected, but  
211 beyond a straight line distance of about 5 m (including vertical and horizontal dimensions) FC are  
212 undetectable more than 90% of the time and rarely exceed 10 cfu/100ml. Beyond about 5m, such  
213 detections as occur are not continuous in space or time (SI S4). Moreover there are no consistent  
214 concentration gradients or dominant directions of contaminant transport.

215  
216 Fig 5 illustrates the discontinuous, multi-dimensional spatial distribution of faecal bacteria around  
217 latrines, and in particular the very low levels of contamination beyond the inner ring of piezometers,  
218 even at the most contaminated sites and in the most contaminated events. At Paikgachha, the most  
219 contaminated site, FC were detected at least once at every piezometer but, beyond the shallowest  
220 layer the frequencies and maximum levels of contamination are very low, and in most of the deeper  
221 ( $\geq 10$ m) piezometers FC never exceed 10 cfu/100ml. At Paikgachha, the sampling event with the  
222 most detections occurred in the middle of the dry season (December 2014; Fig 5a). here, the  
223 shallowest piezometers at 2 m distance are severely contaminated, but the FC concentration was  
224 only 15 cfu/100ml at a 4m radial distance. At a depth of 10m, the maximum FC concentration was  
225 only 7 cfu/100ml, and at eight out of thirteen piezometers FC were not detected. Evidently, the  
226 distribution of FC detections in the far-field does not follow an obviously rational pattern. For  
227 example, more detections were found in the 20 and 27 m deep piezometers although the maximum  
228 concentration was just 6 cfu/100ml. By contrast with Paikgachha, the most-contaminated sampling  
229 event at Shambuganj occurred in the late monsoon (September 2015; Fig 5b). In the shallowest  
230 layer, FC concentrations were mostly a few hundred cfu/100ml at a 2m radial distance and in one  
231 piezometer FC's were not detected. At depths of 8 and 18 m, FC's were detected in only 4 and 3 out  
232 of the 13 piezometers in each horizon respectively; and at 25 m there were no detections. In the best

233 instrumented horizons (10m at Paikgachha; 8 and 18 m at Shambujan) there is no indication of  
234 either lateral concentration gradients or continuity of contamination, and on some limbs  
235 contamination was detected only in the most distant piezometer. The far-field monitoring results at  
236 Paikgachha, Shambujan and the other sites indicate the distribution of faecal bacteria do not  
237 resemble the classical plume that is assumed in solute transport theory, whether in terms of  
238 direction, continuity or concentration gradient.

239

## 240 **DISCUSSION**

241 Monthly monitoring at four experimental latrines over two years revealed a consistent pattern of  
242 bacterial migration, characterised by what we term near-field and far-field contamination (Table 2).  
243 The near-field extends for only a few metres from the latrine and contains high concentrations of  
244 FC that are spatially and temporally continuous. In the far-field, by contrast, FC detections are rare,  
245 with concentrations mostly  $\leq 10$  cfu/100ml and where bacterial contamination is spatially and  
246 temporally discontinuous, displaying neither concentration gradients nor relation to either inferred  
247 flow directions or seasonal fluctuations. Transport in the far-field may involve periodic detachment  
248 of sediment-bound bacteria and/or the operation of ‘two populations’ as suggested by the column-  
249 modelling studies of Feighery et al. (2013) who inferred the presence of a minor second population  
250 which could be transported up to 10m. This is similar to the pioneering observations of Caldwell  
251 and Parr (1937), Dyer (1941) and Dyer et al. (1945) who found that the migration of faecal bacteria  
252 is quickly limited to a few metres, equivalent to our near-field. Longer-range migrations, much  
253 cited in literature reviews, may be equivalent to our far-field detections but capture neither the  
254 nature of risk nor adequately describe the nature of advective transport of bacteria through aquifers.

255

256 The differences in faecal contamination between sites are open to various environmental  
257 explanations that are discussed in detail by Islam et al. (2017b). We consider that differential faecal  
258 loading is an unlikely explanatory factor because each latrine received the product of a single

259 family. Near-field contamination is greatest where the unsaturated zone below the latrine is thin,  
260 transient or absent, suggesting that bacterial survival or transport is facilitated in the saturated zone.  
261 However, any causal interpretation is subject to confounding by inter-related factors including  
262 higher clay and organic matter content of sediments and, at Paikgachha, by saline pore water which  
263 favours preservation of bacteria (e.g. Miller et al. 1984). Conversely, the sites with deeper water  
264 tables are also underlain by sandier sediments (Fig 1) and less organic matter.

265  
266 Much was learned about latrines and groundwater pollution 70 to 80 years ago through the detailed  
267 field investigations of Elfreda Caldwell and colleagues in the southern USA and Brian Dyer and  
268 colleagues in the Indian Subcontinent. Notwithstanding mention in some reviews (e.g. Lewis et al.  
269 1982), this knowledge, which remains valid, has unfortunately been 'lost' to recent researchers. Our  
270 findings replicate and revalidate the findings of both groups regarding the very limited transport of  
271 bacteria in the subsurface. Caldwell and Parr (1937) and Caldwell (1937; 1938a, b) tested about  
272 20,000 water samples from around five experimental bored latrines on the coastal plain of Alabama.  
273 Initially, *E. coli* reached radial distances of 3 and 5 m in a few days. After two months, *E. coli* were  
274 detected in 90% of 5 m wells; 40% of 8 m wells for one month; and occasionally at 11 m for 10  
275 days. After five months, *E. coli* was not detected at 3 m, and after 7 months was not detected 1.5 m  
276 from the latrine, excepting temporary resurgences following rises in the water table. The authors  
277 hypothesised an attenuation mechanism equivalent to a schmutzdecke in parallel with the changes  
278 inside the latrine. Their work included an early discovery of hand-pumps acting as bacterial  
279 reservoirs (Parr and Caldwell, 1933). At experimental bored latrines on alkaline-alluvium at Lahore  
280 (Pakistan), Dyer (1941) monitored hand-pumped wells at radial distances of 1.5 to 10 m,  
281 concluding that faecal bacteria travelled  $> 1.5\text{m}$  but  $< 3\text{m}$  in the direction of flow. Extending these  
282 investigations to an alluvial site near Kolkata (India), Dyer and Bhaskaran (1943, 1945) and Dyer et  
283 al (1945) found that *E. coli* were detected at radial distances of 3m for 2 months and abundant at  
284 1.5m, but virtually absent by the end of a year.

285

286 Recent studies in Bangladesh (Table 3) enhance the significance of our findings. Irrespective of  
287 whether pump spouts are disinfected, 20-50% of tubewell water samples are contaminated by low  
288 levels of FC (and other FIB) at the point of collection, and significantly more at the point of use.  
289 Moreover, a high proportion of these wells were a few tens to a few hundreds of metres deep;  
290 depths to which faecal bacteria could not survive if transported by normal groundwater flow.  
291 Correlations of tubewell contamination with sanitary inspections scores have low explanatory  
292 power. Some correlations with distance to latrines (e.g. Escamilla et al. 2013) suggest associations  
293 over tens of metres, although our data do not support such inferences. Greater faecal contamination  
294 in the wet season appears to be near universal (Kostyla et al. 2015) and a few studies infer that  
295 heavy antecedent rainfall promotes contamination events (e.g. Wu et al, 2016). Although there is  
296 some indication of greater near-field contamination in the monsoon, we find no correlation between  
297 contamination events and 3-day or 7-day antecedent rainfall (SI-S4).

298

299 Parr and Caldwell (1933), Hoque (1988), Knappett et al. (2012a) and Ferguson et al. (2011) draw  
300 attention to the role of the borehole - well - pump system in contaminating drinking water (Table 3)  
301 including: (i) dirty priming water; (ii) leaking casing joints; (iii) cement grouting of the borehole  
302 annulus reducing contamination of shallow wells; and (iv) elastomeric components of hand-pumps  
303 acting as bacterial reservoirs. The high frequencies of faecal contamination in the pilot study  
304 tubewells (Islam et al. 2016; SI-1) and piezometers compared to piezometers in this study (sampled  
305 with a peristaltic pump) support the conclusion that the in-situ microbiological quality of  
306 groundwater is much superior to that of well water. The impersistent effect of spot chlorination (e.g.  
307 Luby et al. 2006) may thus be explained by factors other than pervasive contamination of the  
308 aquifers.

309

310 Combining our study data for near- and far-fields with published data supporting pervasive  
311 recontamination, we propose (Fig 6) an extended conceptual model of faecal contamination of  
312 drinking water that distinguishes four sub-pathways: (P1) leakage and biofiltration of faecal waste  
313 at the latrine-aquifer interface and near-field; (P2) leachate migration through the far-field to the  
314 borehole; (P3) from the face of the borehole to the pump spout; and (P4) from point of collection to  
315 point-of-use. The overall source-pathway-receptor route is characterised by a large and rapid  
316 decline of faecal bacteria in the near-field followed by slow-attenuation of low-level contamination  
317 in the far-field and then progressive increases in faecal bacteria between the point of entry to the  
318 well and the point of consumption due to recontamination from non-latrines sources. Sub-pathways  
319 P2 and P4 have long been recognised and have given attention through siting criteria and hygiene  
320 education respectively. On the other hand, sub-pathway P3 has been largely neglected and  
321 comprises at least four sources of contamination: (a) dirt or drilling fluid additives such as cow  
322 dung introduced during construction; (b) faecal contamination infiltrating beneath platforms and  
323 along the borehole annulus to enter through the screen or leaking joints; (c) dirty priming water ;  
324 and (d) biofilms on elastomeric components of hand-pumps that can harbour faecal bacteria for  
325 more than a hundred days.

326

### 327 *Estimation of Potential Disease Burden*

328 Extreme contamination in the near-field is well-known although the rate of attenuation is less well  
329 appreciated. The public health significance of the subsequent sub-pathways is indicated by the  
330 increasing frequency and magnitude of contamination from far-field groundwater to the point-of-  
331 use. Actual morbidity risks will depend on the particular pathogens present, the frequency of  
332 occurrence, concentration, and their dose-response functions. For illustrative purposes, we use the  
333 degree of faecal contamination on each sub-pathway to estimate the corresponding relative disease  
334 burden by comparing the behaviour of real pathogens to that of the hypothetical enteric bacterium,

335 *Bacterium experimentus* of Briscoe (1984) which follows a perfect log-linear dose-response

336 function with a probability of infection ( $P_{inf.}$ ) defined as

337

$$338 \quad P_{inf.} = 0.5 * \log_{10} (\text{dose})$$

339

340 where the dose is the concentration of the pathogen and  $P_{inf.}$  is limited to a maximum value of 1.0.

341 We assume that the dose of *B. experimentus* in a given time unit (e.g. a day) is directly proportional

342 to the median concentration of FC in each sub-pathway, where we estimate a hypothetical 'dose' by

343 summing the products of the proportions of samples contaminated and the median FC concentration

344 in each WHO risk class. The input data on the proportions and concentrations in each risk class and

345 for each sub-pathway are taken either from this study or the quality control data set ( $n = 109$ ) of the

346 2013 Multiple Indicator Cluster Survey (BBS/UNICEF 2015; Table 4).

347

348 For each sub-pathway, we sum the weighted probabilities to calculate an attributable risk (AR) for

349 the sub-pathway of interest ( $P_i$ ) as:

350

$$351 \quad AR_i = \sum pn_i * P_{(inf.)i}$$

352

353 where  $pn_i$  is the proportion of samples in that risk class. Thus  $AR_{i-1}$ , the attributable risk from the

354 preceding sub-pathway, is subtracted from  $AR_i$  to calculate the incremental attributable risk (IAR)

355 arising from sub-pathway  $P_i$  alone. Dividing the increment of attributable risk by the total

356 attributable risk at the point of consumption provides an estimate of the proportion of diarrhoeal

357 disease attributable to bacteria originating in each of sub-pathways P2 to P4.

358

359 The calculated proportions of attributable disease for the base case are 1.3%, 28.8% and 69.9%

360 (Table 5). A sensitivity analysis was conducted, initially applying 50% increases and reductions to



361 the proportions of samples contaminated, median concentrations, and  $\pm 200\%$  variations in  $P_{inf}$ .  
362 Subsequent checks considered reducing the dose by a factor of ten, and adjusting the infectivity of  
363 Briscoe's putative pathogen ( $P_{inf} = 0.2 * \log_{10}(\text{dose})$ ) to result in a 100% probability of infection when  
364 consuming 2L of water containing 5000 cfu/100ml of FC. The resulting ranges of disease risk  
365 attributable to each sub-pathway were: 0.3-4.1% in the far-field, 27.4-32.6% at point of collection  
366 and 66.0-71.0% at point of use.

367  
368 The use of Briscoe's hypothetical pathogen in our calculations does not contradict our questioning  
369 of his argument about the interaction of different transmission routes (Cairncross 1987). Our  
370 calculations make the conservative assumption of no bacterial die-off on subsequent sub-pathways  
371 which, if included, would reduce the risks originating from the upstream sub-pathways even further.  
372 Uncertainty arises because we combine our site data with national data; nevertheless, we consider  
373 the sensitivity analysis renders the qualitative conclusions robust and serves the purpose of driving  
374 improvements in sanitary practice.

375

### 376 *Policy Implications*

377 Recent reviews and studies (e.g. Graham and Polizzotto 2013; Daniels et al. 2016; Odagiri et al.  
378 2016; Sorensen et al. 2016) have re-ignited an old debate as to whether increasing latrine coverage  
379 increases diarrhoeal disease due to increased groundwater contamination. Our results suggest that  
380 such warnings conflate the low-risk from groundwater contamination in the far-field with much  
381 higher risks associated with contaminated well water, and therefore fail to target the principal  
382 sources of microbial risk, which arise close to the well and post-collection. Thus, while recent  
383 initiatives to improve post-collection water handling (e.g. UNICEF 2012) are fully justified, the  
384 attention given to well-latrines spacing is not proportionate to the associated risks. Further, increased  
385 groundwater contamination from expanding latrine coverage poses only a modest threat to drinking  
386 water quality compared to the risks associated with sub-pathways P3 and P4. To translate the

387 benefits of improved post-collection hygiene practices into reduced mortality, more attention must  
388 also be given to reducing contamination at the well (cf. VanDerslice and Briscoe 1995). Moreover,  
389 the rare and low level of contamination found at depths of 10 m or more confirms that the  
390 traditional attention given to horizontal spacing is not only unwarranted but fails to understand the  
391 pathways of the widespread contamination of tubewells tens to a few hundreds of metres deep.  
392 Hence, provided modest vertical and horizontal spacing criteria are adhered to, measures to increase  
393 natural attenuation during groundwater flow from latrines will have little impact on the prevalence  
394 of diarrhoeal disease. Only measures that reduce contamination along the P3 and P4 sub-pathways  
395 will have a major impact on disease burden.

396  
397 Possible low-cost interventions to reduce faecal pollution along the P3 sub-pathway include: (i)  
398 replacing cow-dung with bentonite clay as a drilling additive; (ii) cement grouting of the borehole  
399 annulus after sand packing; (iii) overnight shock chlorination on the day of well completion; (iv)  
400 maintaining a container of chlorinated water for priming purposes; (v) regular removal and  
401 cleaning of the pump head with disinfectant and a brush; (vi) more microbiological testing; and last  
402 but not least (viii) incorporation of the above into awareness raising in caretaker training and water  
403 safety plans.

404

## 405 **Conclusions**

406 Severe and spatially or temporally continuous faecal pollution of groundwater from pit latrines is  
407 largely restricted to a near-field that extends for a very few metres and passes rapidly into a far-field  
408 (FC typically <10 cfu/100ml and <10% of the time) where faecal pollution is spatially and  
409 temporally discontinuous, lacks concentration gradients and is poorly correlated with groundwater  
410 flow. Contamination of far-field groundwater is less frequent and less severe than water collected  
411 from hand-pumped tubewells. Faecal contamination along a sequence of four-sub-pathways  
412 comprising the latrine-groundwater interface or near-field (P1); flow through the far-field (P2); well

413 screen to pump outlet (P3); and collection-to-consumption (P4) drops to a minimum in the far-field  
414 and then is progressively re-contaminated up to the point of use. Invoking the hypothetical pathogen  
415 *Bacterium experimentus*, we estimate that sub-pathways P2, P3 and P4 respectively contribute of  
416 the order of 1-2%, 29% and 70% of faecal risk at the point of consumption.

417

418 Tactically, the goal of safe drinking water (SDG 6.1) will only be realised if parallel action is taken  
419 to control risks in the much-neglected well-pump sub-system as well as reducing post-collection  
420 contamination. Strategically, our findings suggest that recent warnings of the reality and public  
421 health significance of increased groundwater pollution resulting from expanding latrine coverage  
422 appear exaggerated. Our findings are expected to apply to all alluvial-deltaic terrains, but may not  
423 apply in areas with fractured or fissured aquifers and thin soil cover.

424

425 *Acknowledgements.* The study was funded by the UK Department for International Development  
426 (DFID), through the Sanitation and Hygiene Applied Research for Equity (SHARE) Consortium led  
427 by the London School of Hygiene and Tropical Medicine (LSHTM) and WaterAid Bangladesh.  
428 icddr,b acknowledges with gratitude the commitment of these agencies to the research. icddr,b is  
429 grateful to the Governments of Bangladesh, Canada, Sweden and the UK for providing unrestricted  
430 support. We thank Professor Richard Carter for helpful comments on an early version of the script.  
431 We also thank two anonymous reviewers for their valuable and constructive suggestions. The  
432 authors declare no conflicts of interest.

433

434

435

## REFERENCES

- 436 Ahmed, M., Shamsuddin, S., Mahmud, S., Rashid, H., Deere, D. and Howard, G. (2005) Risk Assessment of Arsenic  
 437 Mitigation Options (RAAMO), Arsenic Policy Support Unit, Local Government Division, Ministry of Local Government,  
 438 Rural Development and Cooperatives, Bangladesh.
- 439 Ali, M. (2003) Review of drilling and tubewell technology for groundwater irrigation. In: Rahman, A.A., Ravenscroft, P.  
 440 (Eds.) Groundwater Resources and Development in Bangladesh – Background to the Arsenic Crisis, Agricultural  
 441 Potential and the Environment. The University Press Ltd, Dhaka.
- 442 Bain, R., Cronk, R., Wright, J., Yang, H., Slaymaker, T. and Bartram, J. (2014) Fecal contamination of drinking-water in low-  
 443 and middle-income countries: a systematic review and meta-analysis. *PLoS Med* 11(5), e1001644.
- 444 Banerjee, G. (2011) Underground pollution travel from leach pits of on-site sanitation facilities: a case study. *Clean*  
 445 *Technologies and Environmental Policy* 13(3), 489-497.
- 446 BBS/UNICEF (2015) Bangladesh Multiple Indicator Cluster Survey 2012-2013, Progotir Pathey: Final Report, Bangladesh  
 447 Bureau of Statistics and UNICEF Bangladesh.
- 448 Brammer, H. (2012) Physical geography of Bangladesh. The University Press Ltd, Dhaka.
- 449 Briscoe, J. (1984) Intervention studies and the definition of dominant transmission routes. *American Journal of*  
 450 *Epidemiology* 120(3), 449-456.
- 451 Cairncross, S. (1987) Ingested Dose and Diarrhea Transmission Routes. *American Journal of Epidemiology* 125(5), 921-  
 452 922.
- 453 Caldwell, E.L. (1938a) Pollution flow from a pit latrine when permeable soils of considerable depth exist below the pit.  
 454 *Journal of Infectious Diseases* 62(3), 225-258.
- 455 Caldwell, E.L. (1938b) Studies of subsoil pollution in relation to possible contamination of the ground water from human  
 456 excreta deposited in experimental latrines. *Journal of Infectious Diseases* 62(3), 272-292.
- 457 Caldwell, E.L. and Parr, L.W. (1937) Ground water pollution and the bored hole latrine. *Journal of Infectious Diseases* 61,  
 458 148-183.
- 459 Cave, B. and Kolsky, P. (1999) Groundwater, latrines and health. WELL study (163); London School of Hygiene and Tropical  
 460 Medicine and WEDC Loughborough University, UK.
- 461 Daniels, M.E., Smith, W.A., Schmidt, W-P., Clasen, T. and Jenkins, M.W. (2016) Modeling Cryptosporidium and Giardia in  
 462 ground and surface water sources in rural India: associations with latrines, livestock, damaged wells, and rainfall  
 463 patterns. *Environmental Science & Technology* 50(14), 7498-7507.
- 464 Dyer, B.R. (1941) Studies of Ground Water Pollution in an Alkaline Alluvium Soil. *Indian Journal of Medical Research* 29(4),  
 465 867-889.
- 466 Dyer, B. and Bhaskaran, T. (1943) Investigations of Ground-Water Pollution. Part I. Determination of the Direction and the  
 467 Velocity of Flow of Ground Water. *Indian Journal of Medical Research* 31(2), 231-243.
- 468 Dyer, B.R. and Bhaskaran, T. (1945) Investigations of Ground-Water Pollution. Part II. Soil Characteristics in West Bengal,  
 469 India, at the Site of Ground-Water Pollution Investigations. *Indian Journal of Medical Research* 33(1), 17-22.
- 470 Dyer, B.R., Bhaskaran, T. and Sekar, C.C. (1945) Investigations of Ground-Water Pollution. Part III. Ground-Water Pollution  
 471 in West Bengal, India. *Indian Journal of Medical Research* 33(1), 23-62.
- 472 Ercumen, A., Naser, A.M., Arnold, B.F., Unicomb, L., Colford Jr., J.M. and Luby, S.P. (2017) Can Sanitary Inspection Surveys  
 473 Predict Risk of Microbiological Contamination of Groundwater Sources? Evidence from Shallow Tubewells in Rural  
 474 Bangladesh. *American Journal of Tropical Medicine and Hygiene* 96(3), 561-568.
- 475 Escamilla, V., Knappett, P.S., Yunus, M., Streatfield, P. and Emch, M. (2013) Influence of latrine proximity and type on  
 476 tubewell water quality and diarrheal disease in Bangladesh. *Annals of the Association of American Geographers*  
 477 103(2), 299-308.
- 478 Feighery, J., Mailloux, B.J., Ferguson, A., Ahmed, K.M., Geen, A. and Culligan, P.J. (2013) Transport of *E. coli* in aquifer  
 479 sediments of Bangladesh: implications for widespread microbial contamination of groundwater. *Water Resources*  
 480 *Research* 49(7), 3897-3911.
- 481 Ferguson, A.S., Mailloux, B.J., Ahmed, K.M., van Geen, A., McKay, L.D. and Culligan, P.J. (2011) Hand-pumps as reservoirs  
 482 for microbial contamination of well water. *Journal of Water and Health*. 9(4), 708-717.
- 483 Foppen, J. and Schijven, J. (2006) Evaluation of data from the literature on the transport and survival of *Escherichia coli*  
 484 and thermotolerant coliforms in aquifers under saturated conditions. *Water Research* 40(3), 401-426.
- 485 Graham, J.P. and Polizzotto, M.L. (2013) Pit latrines and their impacts on groundwater quality: a systematic review.  
 486 *Environmental Health Perspectives* 121(5), 521-530.
- 487 Hoque, B.A. (1998) Biological contamination of tubewell water. Environmental Health Programme: International Centre for  
 488 Diarrhoeal Disease Research Bangladesh, Dhaka.

- 489 Islam, M.S., Mahmud, Z.H., Islam, M.S., Saha, G.C., Zahid, A., Ali, A.Z., Hassan, M.Q., Islam, K., Jahan, H. and Hossain, Y.  
 490 (2016) Safe distances between groundwater-based water wells and pit latrines at different hydrogeological conditions  
 491 in the Ganges Atrai floodplains of Bangladesh. *Journal of Health Population and Nutrition* 35(1), 26.
- 492 Islam, M.S., Siddika, A., Khan, M., Goldar, M., Sadique, M.A., Kabir, A., Huq, A. and Colwell, R. (2001) Microbiological  
 493 analysis of tube-well water in a rural area of Bangladesh. *Applied and Environmental Microbiology* 67(7), 3328-3330.
- 494 Islam, M.S., Z.H. Mahmud, M.S. Islam, AKM Zakir Hossain, A. Zahid, P. Ravenscroft, G.C. Saha, AHM Zulfiquar Ali, K. Islam,  
 495 S. Cairncross, and J.D. Clemens. (2017a) Faecal contamination of monitoring well nests from newly established pit  
 496 latrines in Bangladesh. (*in preparation*)
- 497 Islam, M.S., Z.H. Mahmud, M.S. Islam, AKM Zakir Hossain, A. Zahid, P. Ravenscroft, G.C. Saha, AHM Zulfiquar Ali, K. Islam,  
 498 S. Cairncross, and J.D. Clemens. (2017b) Relationship of faecal contamination of monitoring wells from Pit latrine in  
 499 relation to distance, chloride and nitrate concentrations. (*in preparation*).
- 500 Knappett, P.S., McKay, L.D., Layton, A., Williams, D.E., Alam, M.J., Huq, M.R., Mey, J., Feighery, J.E., Culligan, P.J. and  
 501 Mailloux, B.J. (2012) Implications of fecal bacteria input from latrine-polluted ponds for wells in sandy aquifers.  
 502 *Environmental Science & Technology* 46(3), 1361-1370.
- 503 Murphy, H.M., Prioleau, M.D., Borchardt, M.A. and Hynds, P.D. (2017) Review: Epidemiological evidence of groundwater  
 504 contribution to global enteric disease, 1948–2015. *Hydrogeology Journal* 25: 981–1001
- 505 Knappett, P.S., McKay, L.D., Layton, A., Williams, D.E., Alam, M.J., Mailloux, B.J., Ferguson, A.S., Culligan, P.J., Serre, M.L. and  
 506 Emch, M. (2012) Unsealed tubewells lead to increased fecal contamination of drinking water. *Journal of Water and  
 507 Health* 10(4), 565-578.
- 508 Kostyla, C., Bain, R., Cronk, R. and Bartram, J. (2015) Seasonal variation of fecal contamination in drinking water sources in  
 509 developing countries: A systematic review. *Science of the Total Environment* 514, 333-343.
- 510 Lawrence, A., MacDonald, D., Howard, A., Barrett, M., Pedley, S., Ahmed, K. and Nalubega, M. (2001) Guidelines for  
 511 assessing the risk to groundwater from on-site sanitation. British Geological Survey, Commissioned Report  
 512 CR/01/1422001.
- 513 Leber, J., Rahman, M.M., Ahmed, K.M., Mailloux, B. and van Geen, A. (2011) Contrasting influence of geology on *E. coli* and  
 514 arsenic in aquifers of Bangladesh. *Ground Water* 49(1), 111-123.
- 515 Lewis, W.J., Foster, S.S. and Drasar, B.S. (1982) The risk of groundwater pollution by on-site sanitation in developing  
 516 countries. International Reference Centre for Wastes Disposal (IRCWD—now SANDEC) Report (01/82).
- 517 Luby, S., Gupta, S., Sheikh, M., Johnston, R., Ram, P. and Islam, M. (2008) Tubewell water quality and predictors of  
 518 contamination in three flood-prone areas in Bangladesh. *Journal of Applied Microbiology* 105(4), 1002-1008.
- 519 Luby, S., Islam, M.S. and Johnston, R. (2006) Chlorine spot treatment of flooded tube wells, an efficacy trial. *Journal of  
 520 Applied Microbiology* 100(5), 1154-1158.
- 521 Miller, C.J., Drasar, B.S. and Feachem, R.G. (1984) Response of toxigenic *Vibrio cholerae* 01 to physico-chemical stresses in  
 522 aquatic environments. *Journal of Hygiene*. 93(3), 475.
- 523 Misati, A.G., Ogendi, G., Peletz, R., Khush, R. and Kumpel, E. 2017. Can Sanitary Surveys Replace Water Quality Testing?  
 524 Evidence from Kisii, Kenya. *International Journal of Environmental Research and Public Health* 14(2): 152.
- 525 Odagiri, M., Schriewer, A., Daniels, M.E., Wuertz, S., Smith, W.A., Clasen, T., Schmidt, W.-P., Jin, Y., Torondel, B. and Misra,  
 526 P.R. (2016) Human fecal and pathogen exposure pathways in rural Indian villages and the effect of increased latrine  
 527 coverage. *Water Research* 100, 232-244.
- 528 Parr, L.W. and Caldwell, E.L. (1933) Variation within the Colon-Aerogenes Group as Found in Bacteriologic Analysis of  
 529 Water from Contaminated Pumps. *Journal of Infectious Diseases* 53(1), 24-28.
- 530 Rahman, A.A. and Ravenscroft, P. (2003) Groundwater resources and development in Bangladesh – background to the  
 531 arsenic crisis, agricultural potential and the environment. Bangladesh Centre for Advanced Studies. University Press  
 532 Ltd, Dhaka.
- 533 Ravenscroft, P., Kabir, A., Hakim, S.A.I., Ibrahim, A., Ghosh, S.K., Rahman, M.S., Akhter, F. and Sattar, M.A. (2014)  
 534 Effectiveness of public rural waterpoints in Bangladesh with special reference to arsenic mitigation. *Journal of WASH  
 535 for Development* 4(4), 545-562.
- 536 Sorensen, J., Sadhu, A., Sampath, G., Sugden, S., Gupta, S.D., Lapworth, D., Marchant, B. and Pedley, S. (2016) Are  
 537 sanitation interventions a threat to drinking water supplies in rural India? An application of tryptophan-like  
 538 fluorescence. *Water Research* 88, 923-932.
- 539 Trevett, A.F., Carter, R.C. and Tyrrel, S.F. (2005) The importance of domestic water quality management in the context of  
 540 faecal–oral disease transmission. *Journal of Water Health*. 3(3), 259-270.
- 541 UNICEF (2012) Water, sanitation and hygiene (WASH) in schools. United Nations Children's Fund, New York. Accessed on  
 542 June 11, 2016.
- 543 VanDerslice, J. and Briscoe, J. (1995) Environmental interventions in developing countries: interactions and their

- 544 implications. *American Journal of Epidemiology* 141(2), 135-144.
- 545 WHO (2011) *Guidelines for drinking-water quality*; 4th Ed. World Health Organization, Geneva.
- 546 Wu, J., Yunus, M., Islam, M.S. and Emch, M. (2016) Influence of climate extremes and land use on fecal contamination of
- 547 shallow tubewells in Bangladesh. *Environmental Science & Technology* 50(5), 2669-2676.
- 548
- 549

ACCEPTED MANUSCRIPT

## 550 LIST OF TABLES

551

552 1. Faecal Coliform detections at four sites.

553 2. Summary of Near- and Far-Field contamination characteristics at four sites.

554 3. Key Findings from published studies of water wells and latrines in Bangladesh

555 4. Input data for the base case for pathogenic disease burden estimation

556 5. Relative risks for *Bacterium experimentus* in the aquifer – well – household system.

ACCEPTED MANUSCRIPT

557  
558  
559  
560  
561  
562  
563  
564  
565  
566  
567  
568  
569

Site	GPS Coordinates	Elevation (m asl)	Nr of Piezometers	Nr of Samples	Faecal Coliforms (cfu/100ml)		
					Median	>0	>10
Pirganj, Rangpur	E: 89.20513 N: 25.29444	26.4	30	626	0	3.3%	0.8%
Shambujan, Mymensingh	E: 90.27130 N: 24.455778	13.5	34	842	0	10.5%	2.5%
Jajira, Shariatpur	E: 90.14381 N: 23.24308	7.2	32	737	0	13.7%	6.7%
Paikgachha, Khulna	E: 89.18509 N: 22.36135	1.4	27	575	0	23.3%	19.0%

570  
571  
572  
573  
574  
575  
576

Table 1. Faecal Coliform detections at four sites. All measurements are units of colony forming units per 100 ml of water (cfu/100ml) analysed at the icddr, Environmental Microbiology laboratory in Dhaka. The number of samples excludes baseline and duplicate samples.



577

Site	Near-field				Far-field				
	Typical high and median FC conc'n	Typical frequency		Lateral & vertical extent (m)	max. FC (cfu/100ml)	FC frequency		Migration distance, m	
		FC >0	FC >10			FC >0	FC >10	FC >0	FC >10
Pirganj, Rangpur	100; median 0	16%	8.0%	< 1.7 m	20	2.4%	0.2%	11	4.4
Shambuganj, Mymensingh	200 – 600; median 0	17.1%	9.4%	L<2.2m; (7m <sup>*</sup> )	500	9.4%	1.3%	28	6.5
Jajira, Shariatpur	4,000 – 20,000; median 0	69%	59%	L<2m; (8m <sup>*</sup> )	92	9.6%	2.3%	23	11
Paikgachha, Khulna	1,500 - >80,000; median 560	93%	92%	c. 5m	56	7.0%	1.6%	28	8.7

578

579

580 Table 2. Summary of Near- and Far-Field contamination characteristics at four sites. All detections refer to faecal coliforms in cfu/100ml. Note, in the

581 far-field, all median FC concentrations are zero. At Pirganj and Shambuganj the true near-field does not reach the 2m (radially) distant piezometers;

582 there is a zone with slightly elevated frequencies of detections ( $\leq 20\%$ ) extending about 4 and 8m respectively. Also, breakthrough time at these sites

583 were probably affected by the fall in the water table in the dry season below the shallowest piezometers causing downward migration of pollution that

584 did not reach the second monitored horizon.

585

586

Subject	Findings / Observations	Reference(s)
FIB in water wells	With or without sterilisation of the pump spout: <ul style="list-style-type: none"> <li>• 30-50% of shallow tubewells are contaminated at point of collection;</li> <li>• 27-50% of deep tubewells (&gt;150m) are contaminated at point of collection (authors suggest dirty pump priming water as a factor);</li> <li>• 76-94% of ring wells contain FIB are contaminated by FIB at point of collection, and much more frequently in higher risk classes than in tubewells.</li> </ul>	Ahmed et al. (2005); Ercumen et al. (2017); Hoque (1998); Leber et al. (2010); Ravenscroft et al. (2014); BBS/UNICEF (2015)
Platforms and annular space sealing	The presence of a platform made no difference to <i>E. coli</i> detection, but cement sealing of the annulus significantly reduced the frequency and magnitude of contamination.	Knappett et al. (2012a)
Handpumps as bacterial reservoirs	Hand-pumps removed from the field and a new handpump spiked with <i>E. coli</i> were flushed with sterile water; the field pumps produced FIB for at least 29 days, and the spiked pump for 125 days.	Ferguson et al. (2011)
Well disinfection	Disinfection by shock chlorination does not prevent the recontamination / regrowth of FIB.	Luby et al. (2006); Ferguson et al. (2011)
Latrine and site drainage.	Associations regarding distance to latrine or pollution source are weak, absent or have improbably large correlation distances. Correlations with Sanitary inspection scores generally absent. However, at 12 sites in West Bengal, FC migrations of 7m laterally and 6.5m vertically were inferred.	Banerjee (2011); Hoque (1998); Ercumen et al. (2017); Escamilla et al. (2013); Wu et al. (2016).
Impact of contaminated ponds on groundwater.	Low-permeability, biologically active 'skins' greatly restrict leakage to groundwater except following heavy rain and in the early monsoon.	Knappett et al. (2012b)
Rainfall and seasonality	Contamination of tubewells is greatest during the monsoon. One study reported a small but significant relationship with heavy antecedent rainfall.	Lawrence et al. (2001); Ahmed et al. (2005); Luby et al. (2008); Leber et al. (2010); Wu et al. (2016)
Transport of FIB through soil columns	An average decay rate of 0.03 log <sub>10</sub> /day was measured in Column experiments and modelling required a two-population model where most bacteria are removed in the first metre but the second population could migrate up to 10m.	Feighery et al. (2013)
Sediment binding of FIB	In a peri-urban area, sediments adsorbed 10 <sup>3</sup> – 10 <sup>4</sup> cfu/g of FIB to a depth of at least 10 m.	Lawrence et al. (2001)

587

588

Table 3. Key Findings from recent studies of water well pollution and latrines in Bangladesh and West Bengal (India)

589

WHO Risk Class	Far-field Groundwater		Point of Collection		Point of Use	
	Median FC	Prop'n	Median FC	Prop'n	Median FC	Prop'n
Very low	0	93%	0	77%	0	30%
Low	2	5.7%	3	10%	4	28%
Medium	20	1.3%	18	8%	60	26%
High	350	0.1%	300	3%	294	13%
Very High	0	0%	2300	2%	1800	3%

590

591

592

593

594

Table 4. Input data for the base case for pathogenic disease burden estimation. Data for the far-field are taken from this study; and other data are taken from quality control data set from BBS/UNICEF (2015). All samples were collected by ICDDR,B staff and analysed in the ICDDR,B Environmental Microbiology Laboratory in Dhaka

595

596

597

598

599

600

601

Sub-pathway	Attributable Risk	Incremental Attributable Risk	Attributable Risk at PoU
Latrine to Well entry	0.017	0.017	1.3%
Well entry to PoC	0.385	0.368	28.8%
PoC to PoU	1.276	0.892	69.9%

602

603

604

605

606

607

608

609

Table 5. Relative risks for *Bacterium experimentus* in the aquifer – well – household system.

## 610 FIGURES

611

612 1. Location of Study Sites

613 2. Water table hydrographs at the four experimental sites

614 3. Histogram of faecal coliform detections at piezometers at four sites

615 4. Pseudo-sections illustrating faecal contamination along one axis of piezometers at  
616 Paikgachha617 5. Distribution of FC in the most contaminated sampling events at Paikgachha and  
618 Shambuganj.619 6. Cartoon depicting an extended conceptual model of faecal contamination of groundwater-  
620 derived drinking water.

621

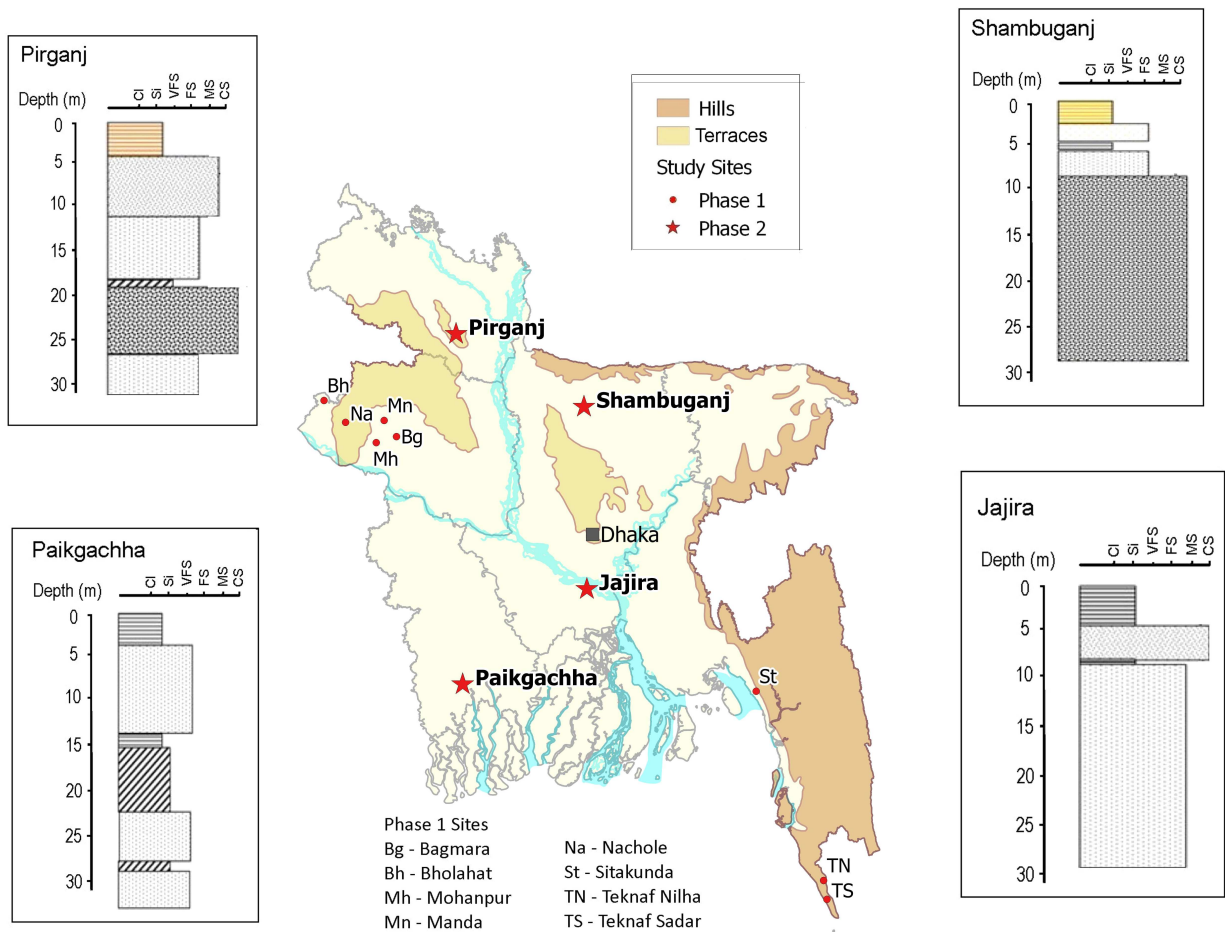
622

623

ACCEPTED MANUSCRIPT

624

625



626

627

628

629

630

631

632

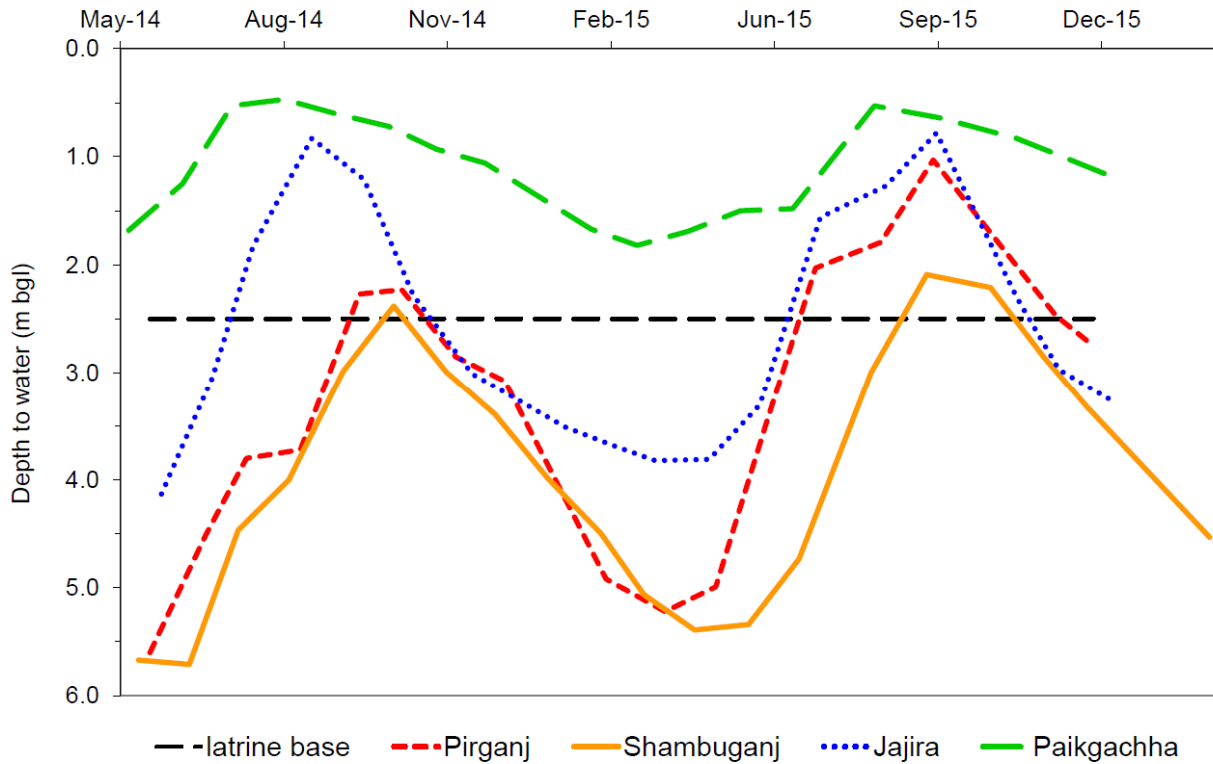
633

634

635

Fig 1. Location of study sites. The Phase 1 (Pilot Study) sites are located either on or around the Pleistocene Barind Tract or on the Chittagong Coastal Plain; the Phase 2 sites are located on the floodplains of the main Ganges – Brahmaputra – Meghna river system. The annotations show the lithological profiles at one of the deepest piezometers at each site where lithological codes are Cl – clay, FS – fine sand, MS – medium sand, CS – coarse sand.

636



637

638

639

640

Fig 2. Water table hydrographs at the four experimental sites. Each hydrograph represents monthly

641

measurements of the depth to water in a 10 m deep piezometer at a radial distance of 2 m from the latrine.

642

Except in a few very shallow piezometers which briefly run dry in the dry season, the choice of piezometer

643

makes a difference of no more than a few centimetres and usually less. The depth of the latrine base is

644

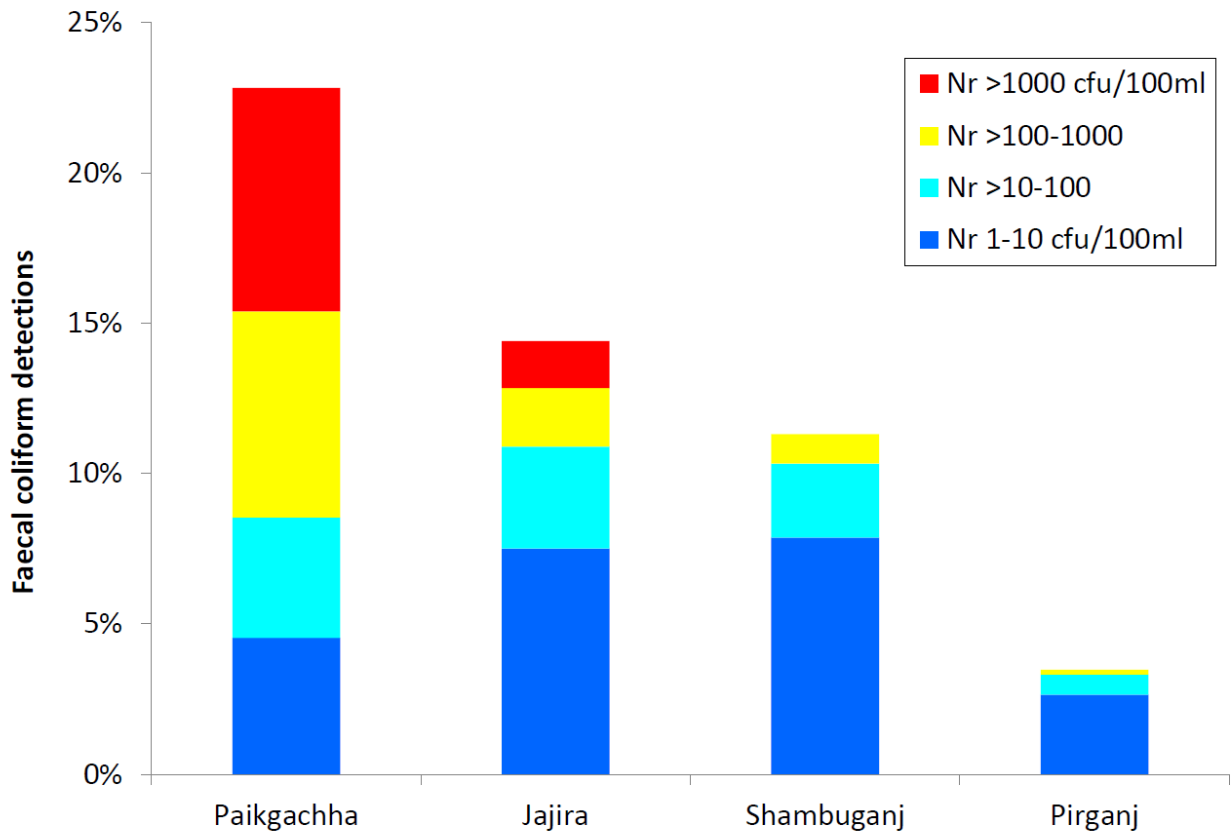
approximately the same at all sites.

645

646

647

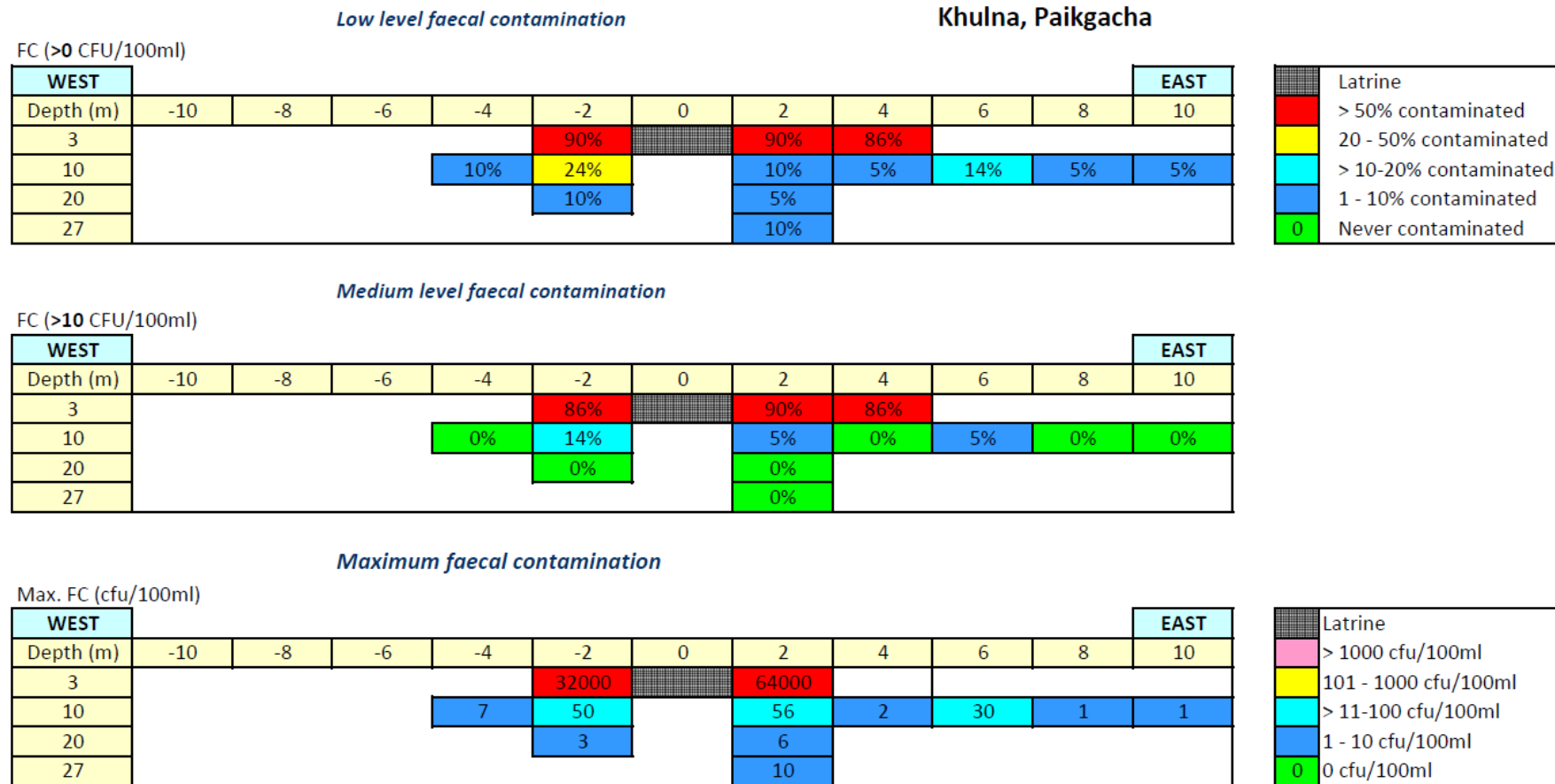
648  
649  
650



651  
652  
653  
654  
655  
656

Fig 3. Histogram of faecal coliform detections at piezometers at four sites. The four concentration classes correspond to the WHO classification of low, medium, high and very high microbial risk.

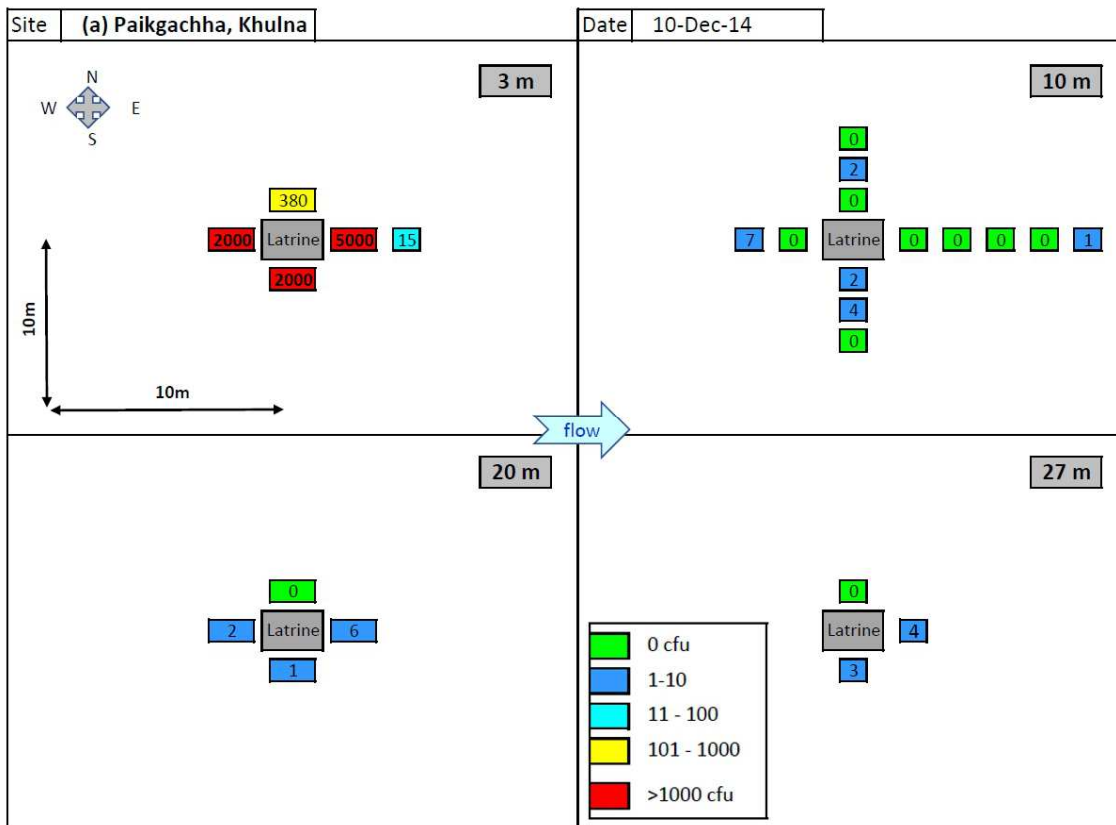
657  
658  
659  
660



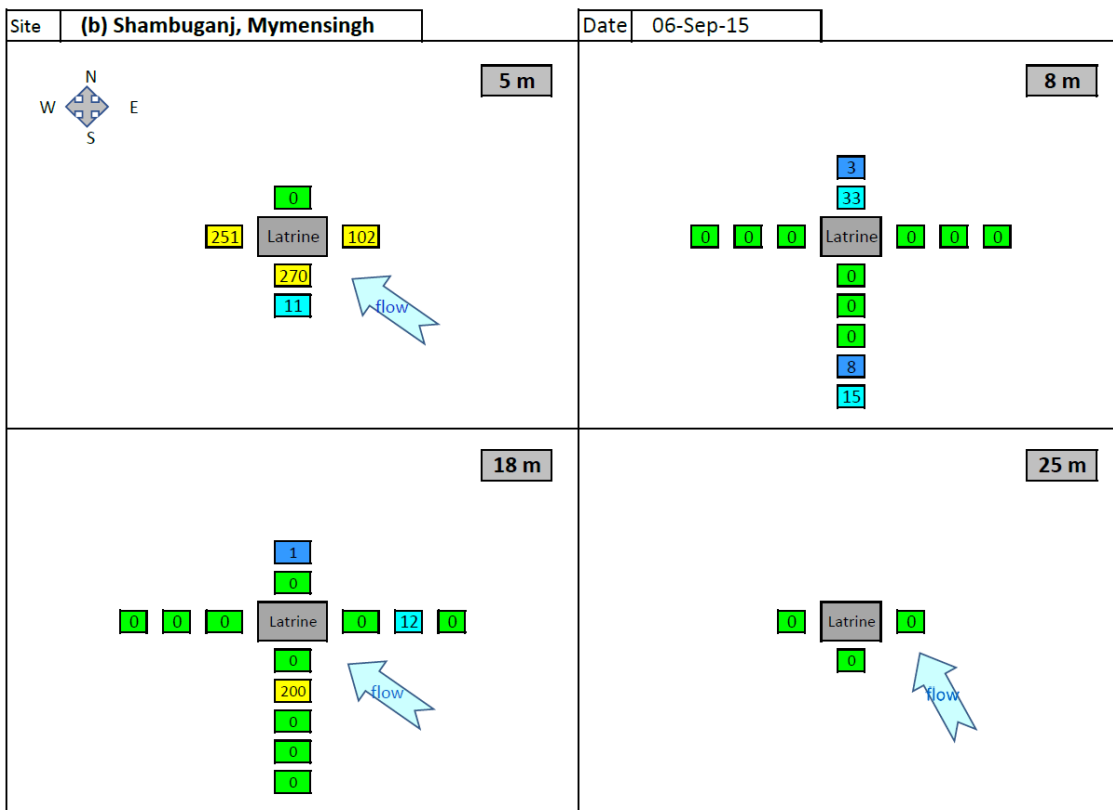
661  
662  
663  
664  
665  
666

Fig 4. Pseudo-sections illustrating faecal contamination along one axis of piezometers at Paikgachha, the most contaminated site. The top row of numbers shows the distance in metres from the latrine and corresponds to the fixed lateral spacing of piezometers. The rows correspond to the pre-defined depths at which piezometer screens are installed. Blank cells on the figure are where no piezometer is installed. Contamination is represented in three alternative ways: (a) the percentage of monthly samples exceeding 0 cfu/100ml; (b) the percentage of monthly samples exceeding 10 cfu/100ml; and (c) the maximum value of FC determined at each piezometer on any occasion.





667



668

669

670

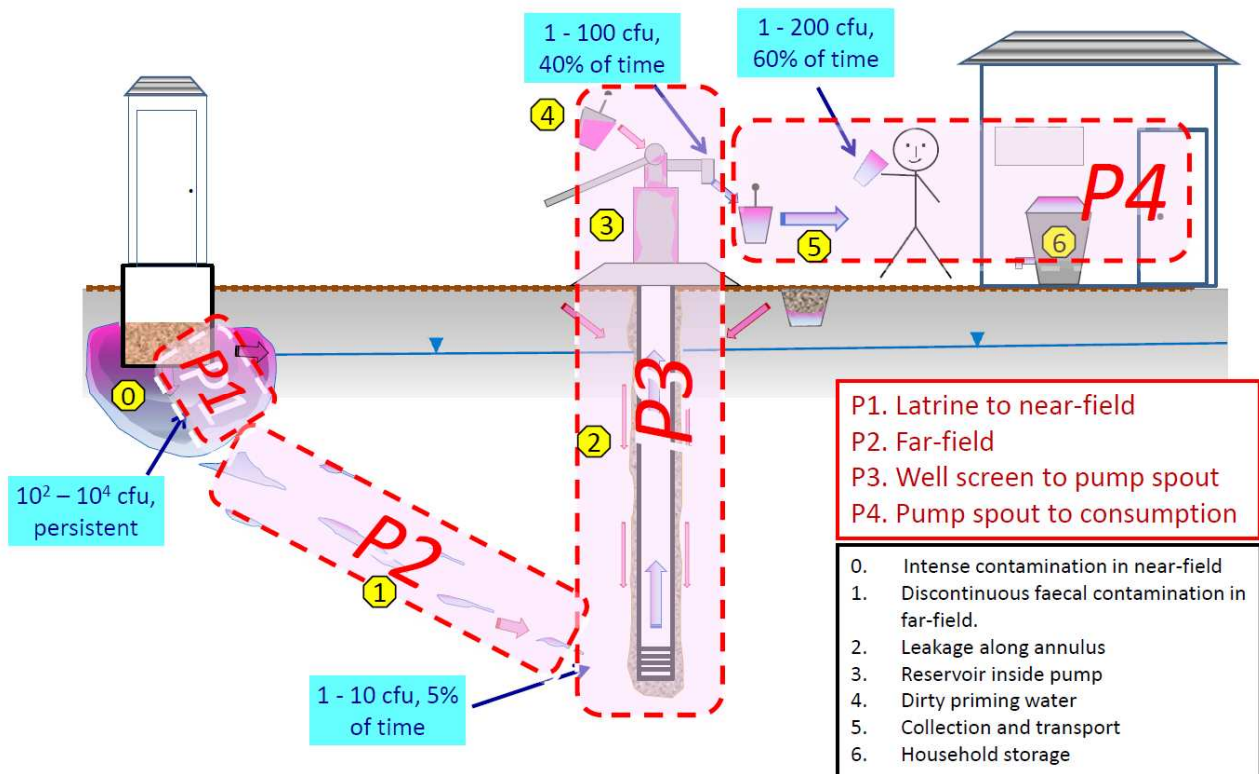
671

672

673

674

Fig 5. Distribution of faecal coliforms (in cfu/100ml) in the most contaminated sampling events at (a) Paikgachha in December 2014 and (b) Shambuganj in September 2015. The four quadrants show the four depth horizons at which piezometers are installed. The geometric alignment in the figure follows the nominal (north, south, east west) arrangement of the axes of the piezometer nests.



675

676 Fig 6. Cartoon depicting an extended conceptual model of faecal contamination of groundwater-derived drinking  
 677 water. See text for explanation.

678

679

ACCEPTED MANUSCRIPT

**SUPPORTING INFORMATION**

- 680
- 681
- 682 S1 The 'Safe Distances' Pilot Study
- 683 S2 Sediment Grain Sizes at Four Experimental Latrine Sites
- 684 S3 Faecal Coliform Monitoring around Four Experimental Latrines
- 685 S4 Seasonal Trends of Faecal Contamination and Antecedent Rainfall

686

687

688

**SUPPORTING TABLES**

- 690 Table S1. Faecal coliform detections in Pilot Study tubewells and piezometers
- 691 Table S2. Faecal coliform monitoring around four experimental latrines: (a) Pirganj; (b)
- 692 Shambuganj; (c) Jajira; (d) Paikgachha.

693

694

**SUPPORTING FIGURES**

- 696 Figure S1. Sediment grain size distribution.
- 697 Figure S2 Antecedent Rainfall and Faecal Contamination at Paikgachha
- 698 Figure S3 Antecedent Rainfall and Faecal Contamination at Jajira

699

700

701

**S1. The 'Safe Distances' Pilot Study**

702

703

704 A pilot study (Islam et al. 2016) examined two contrasting hydrogeological environments: the

705 Pleistocene Barind Tract in western Bangladesh and the Chittagong Coastal Plain (Fig 1). The

706 former is characterised by stiff clayey soils, lower rainfall and deeper water tables; the latter by

707 recent poorly consolidated sandy Holocene sediments with shallow water tables. The results are

708 summarised in Table S1. At the Barind sites, FC were detected in between 0 and 50% of samples

709 from the first aquifer; and at any given site the percentages tended to be higher from tubewells than

710 piezometers. High values ( $10^2 - 10^4$  cfu/100ml) were recorded exclusively in tubewells, while the

711 maximum value recorded in any Barind piezometer was just 17 cfu/100ml. On the Chittagong

712 Coastal Plain, FC were detected in between 14 and 78% of samples in the first aquifer. Although

713 the frequencies of detection were not greatly different, the maxima were much greater in tubewells

714 than piezometers. In all areas, where a second aquifer was encountered both the frequency and

715 maxima of contamination were much lower in both tubewells and piezometers.

716

717 The differences between the Barind Tract (Pleistocene 'terrace') and the Chittagong Coastal Plain

718 demonstrate the geological control of aquifer vulnerability and the advantage of including such

719 environmental factors in siting criteria. The differences in high-level contamination between

720 tubewells and piezometers led to the adoption of a peristaltic pump for sampling (and more rigorous

721 cleaning of well materials and annular sealing) in the main study.

722

723

724

725

726

Upazila	Physiography	Latrine depth (m bgl)	Water table (m bgl)	First Aquifer							Second Aquifer						
				Tubewells				Piezometers			Tubewells				Piezometers		
				Depth(m)	n/n*	Detection	Max.	n/n*	Detection	Max.	Depth(m)	n/n*	Detection	Max.	n/n*	Detection	Max.
Bholahat	Barind	1.5	4-10	6 – 24	10,22	25% * (32%)	19* (2000)	6,18	11%	7	>33	5,7	14%	19	2,6	50%	8
Manda	Barind	3.0	3-8	7 – 24	15,28	40%	32,000	6,18	50%	17	>27	4,4	0%	0	2,6	17%	4
Nachole	Barind	2.0	13-24	>25	11,16	25%	31,000	2,6	0%	0	n.e.	0	-	-	0	-	-
Mohanpur	Barind	2.5	5-14	23-30	4,5	0%	0	3,9	10%	8	>35	9,11	9%	56	1,3	0%	0
Bagmara	Barind	2.5	2-11	>18	10,22	30%	267	8,24	30%	11	n.e.	0	-	-	0	-	-
Sitakunda	Coastal plain	1.5	7-8	5 – 20	19,19	14%	4000	6,18	29%	45	n.e.	2,2	0%	0%	0	-	-
Teknaf Sadar	Coastal plain	2.0	-	0 - 8	9,13	46%	10,000	6,18	76%	194	n.e.	0	-	-	0	-	-
Teknaf Nilha	Coastal plain	1.0	-	16-24	6,9	78%	2000	4,12	30%	3	>50	0	-	-	2,6	0%	0

727

728

729 Table S1. Faecal coliform detections in Pilot Study Tubewells and Piezometers

730

731

732

733

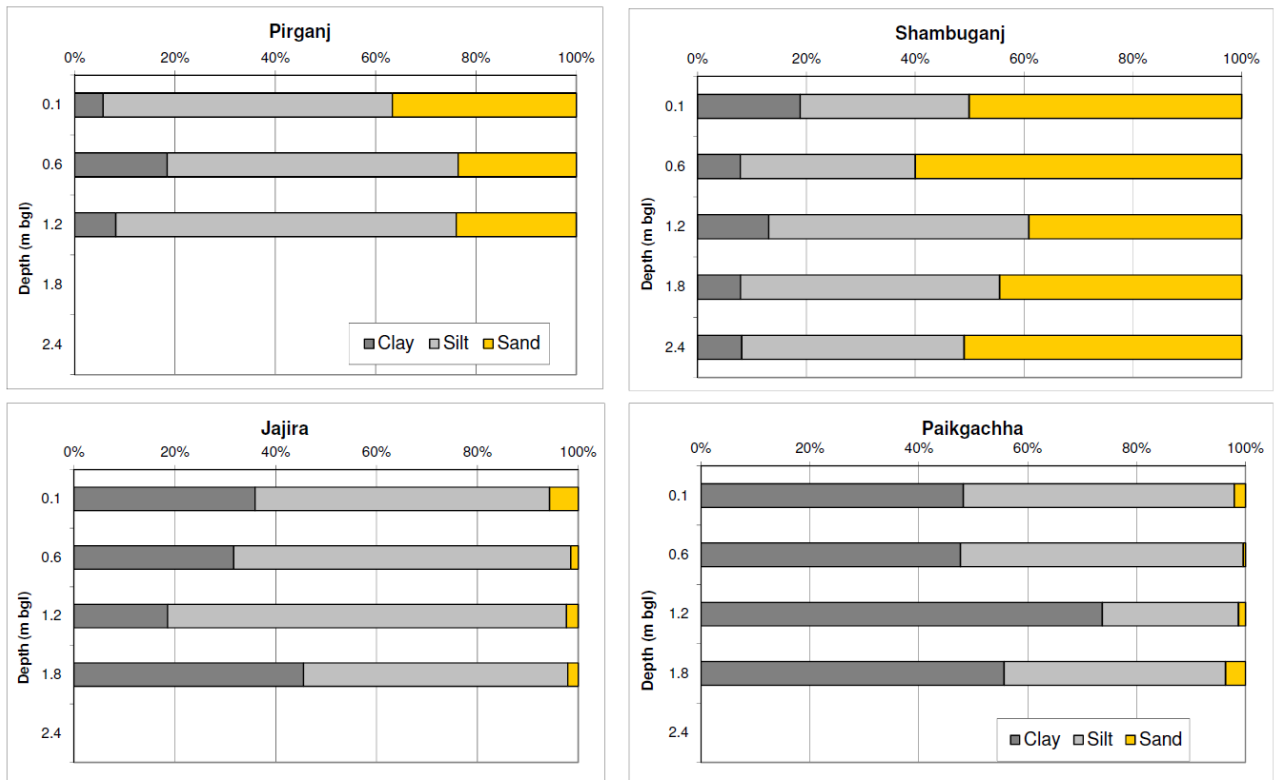
734

735

Notes: (1) All concentrations in cfu/100 ml; (2) figures marked with and asterisk exclude the samples taken after installation of the new pump; (3) 'n/n\*' is the number of sampling point and the number of measurements; (4) 'n.e.' - not encountered; (5) the Barind is a slightly elevated terrace-like Pleistocene alluvial landform with stiff clay surface aquitard and a deep water table in the dry season, whereas shallow aquifers on the Chittagong Coastal Plain are of Holocene age generally overlain by more sandy soils and with a shallow water table. The ranges of water table depths were obtained from the nearest BWDB monitoring well.

## 736 S2 Sediment Grain Sizes at Four Experimental Latrine Sites

737



738

739 **Fig S1. Sediment grain size distribution.** The samples show the analyses of sediment samples

740 collected at the time of excavation of the latrines and measured using standard laboratory methods

741 (Gee et al. 1986)

742

743 **Reference**744 Gee, G., Bauder, J. and Klute, A. (1986) Particle-Size Analysis, Methods of Soil Analysis, Part 1. Physical and Mineralogical  
745 Methods, Soil Science Society of America, Inc., Madison, WIS, USA.

746

747

748

749

750 **S3 Faecal Coliform Monitoring around Four Experimental Latrines**

751

752 Table S2(a). Pirganj Upazila, Rangpur District

753 Table S2(b). Shambuganj, Mymensingh District

754 Table S2(c). Jajira Upazila, Shariatpur District

755 Table S2(d). Paikgachha Upazila, Khulna District

756

757 Tables S2(a) to S2(d) present that part of the raw monitoring data that are used in this paper

758 including the piezometer ID, depth, distance and direction, date of sampling and the faecal coliform

759 count.

760

ACCEPTED MANUSCRIPT

**761 S4. Seasonal Trends of Faecal Contamination and Antecedent Rainfall**

762

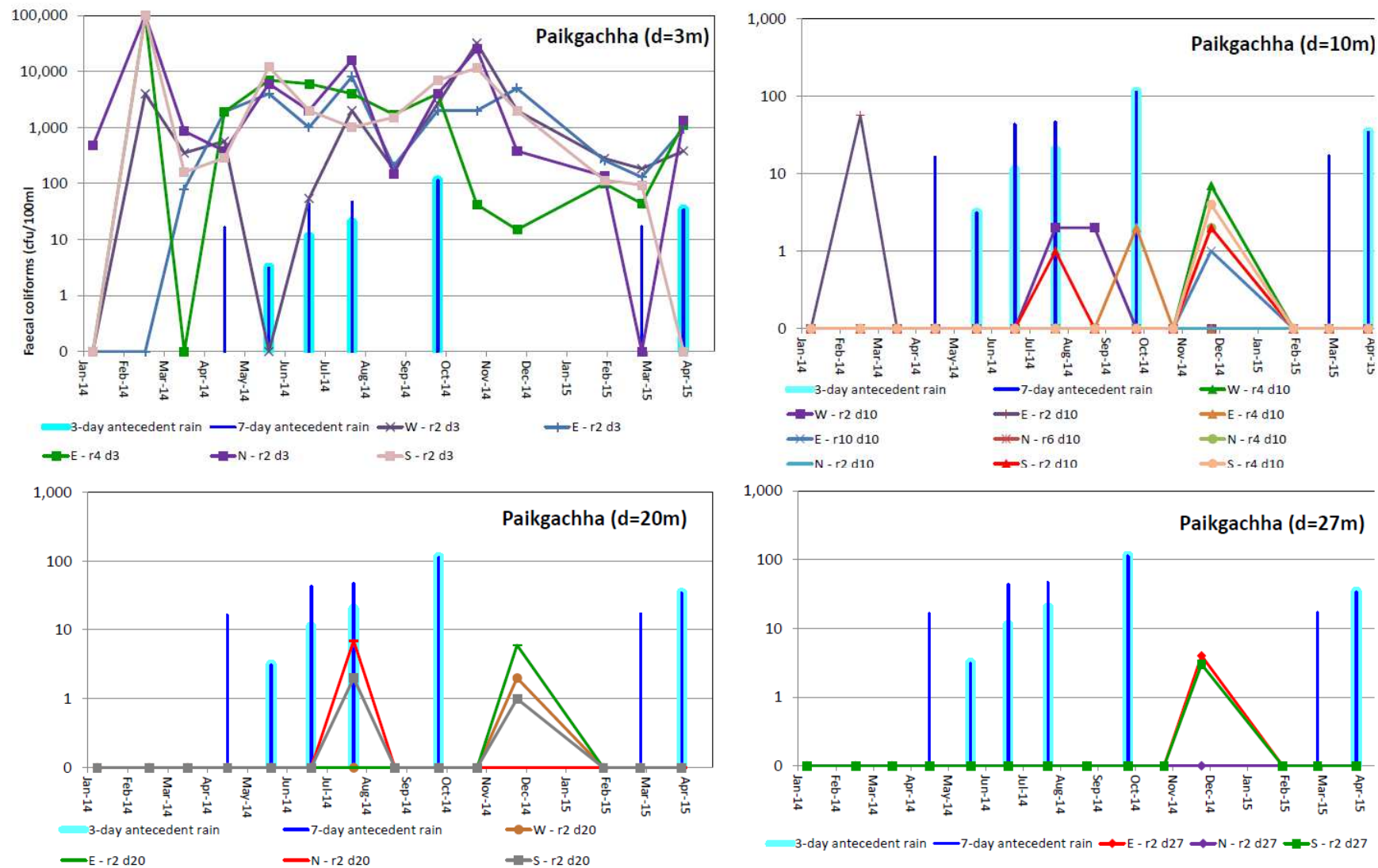
763 The presence or absence of seasonal or other systematic temporal variations in bacterial detection is  
764 important for the evaluation of the many surveys with limited time frames, and which are frequently  
765 biased towards the dry season for logistical reasons. The international literature indicates the  
766 general increase in faecal contamination during the wet season (Kostyla et al. 2015), and in  
767 Bangladesh Wu et al. (2016) inferred positive correlations with heavy antecedent rainfall over  
768 periods of 3 to 30 days but strongest for 3-day antecedent rainfall. To test whether antecedent  
769 rainfall influences our results at the two most contaminated sites, Jajira and Paikgachha, we  
770 collected daily rainfall totals from Bangladesh Water Development Board stations in Paikgachha  
771 upazila and at Palong upazila, which is adjacent to Jajira. Figs S2 and S3 compare the monthly  
772 analyses of faecal coliforms (showing every FC detection at each site) with the 3-day and 7-day  
773 rainfall totals antecedent to the sampling event. The microbiological monitoring results are shown  
774 as continuous traces, except where there is a gap in the data. The 3-day and 7-day antecedent  
775 rainfall totals are shown as enveloping light and dark blue bars respectively; i.e. where the bars are  
776 coincident all rainfall in the preceding 7 days fell in the last 3 days. For clarity, the microbiological  
777 results at each site are divided between four graphs, one for each depth slice. The nomenclature of  
778 the piezometers listed in the legend indicates their direction, radial distance and depth; e.g. “E-  
779 r2d10” denotes a piezometer that is on the eastern line, at a radial distance of 2m and 10m deep.  
780 At Paikgachha, high-level contamination of the near-field persists without any obvious relation to  
781 antecedent rainfall. In the far-field, the many low-level detections are concentrated on two dates:  
782 August 2014 (mid-monsoon) which is preceded by heavy rain, and December 2014 (dry season)  
783 when there was no rain in the previous 7 days. Conversely, antecedent rain was accompanied by  
784 just one detection in October 2014 and no detections in April, May and June 2014 or March or  
785 April 2015.



786 Jajira has the most piezometers with at least one FC detection. High-level contamination of the  
787 near-field is discontinuous over time because for part of the dry season the water table drops below  
788 the screened interval but otherwise is not obviously related to antecedent rainfall. In the far-field,  
789 low-level contamination (only one sample exceeded 10 cfu/100ml) is strongly concentrated in a few  
790 sampling events, notably the 2<sup>nd</sup> and 29<sup>th</sup> December 2014, following no detections in October when  
791 there was the same antecedent rainfall as on 2<sup>nd</sup> December, whereas on 29<sup>th</sup> December there was no  
792 antecedent rainfall. By contrast, significant antecedent rainfall in every month from May to October  
793 2014 produced only one detection. Three far-field detections in March 2015 were not preceded by  
794 rain, but rain in April 2015 resulted in no detections. On the other hand, it is noted that the two  
795 major far-field contamination events occur when shallow contamination was 'disappearing' due to  
796 the declining water table.

797

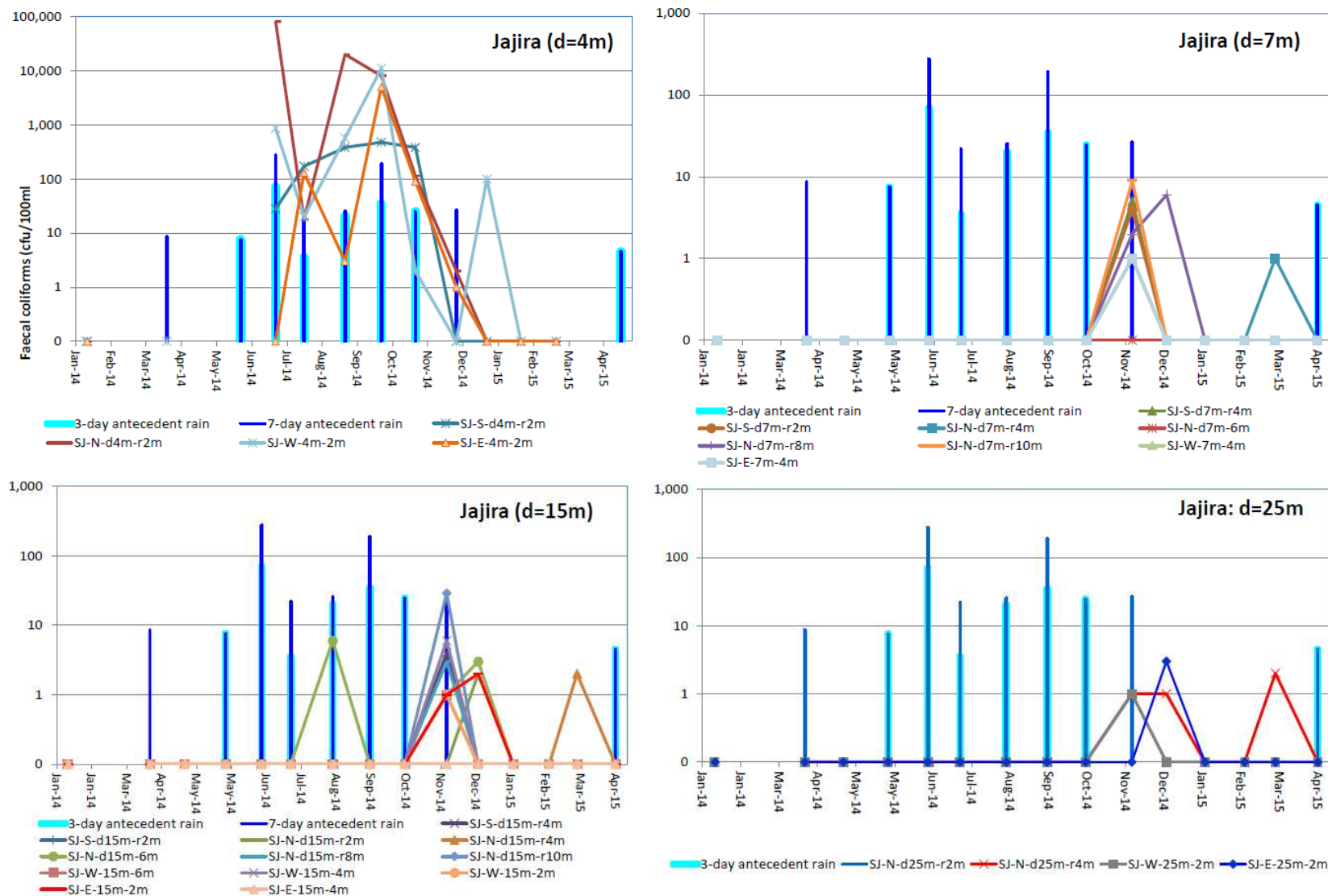
798 In summary, we find no consistent relationship between antecedent rainfall and FC detections.



Note: Every well listed in the legend showed at least one detection of faecal coliforms between Jan. 2014 and Apr. 2015. The vertical lines show the total rainfall in the preceding 3 (thick) and 7 (thin) days.

**Fig S2. Antecedent Rainfall and Faecal Contamination at Paikgachha.** The vertical axis shows the faecal coliform count in cfu/100ml.

799  
800  
801  
802



Note: Every well listed in the legend showed at least one detection of faecal coliforms between Jan. 2014 and Apr. 2015. The vertical lines show the total rainfall in the preceding 3 (thick) and 7 (thin) days.

803  
804

**Fig S3. Antecedent Rainfall and Faecal Contamination at Jajira.** The vertical axis shows the faecal coliform count in cfu/100ml.

**HIGHLIGHTS:**

- Severe faecal pollution of groundwater from latrines is limited to a near-field
- In the far-field, faecal pollution is low-level, discontinuous and impersistent
- Latrine pollution of groundwater is a minor contributor to diarrhoeal disease
- Expanding latrine coverage will have little impact on groundwater used for drinking