

RESEARCH ARTICLE

Maternal BMI and diabetes in pregnancy: Investigating variations between ethnic groups using routine maternity data from London, UK

Erin Nishikawa¹, Laura Oakley^{1*}, Paul T. Seed², Pat Doyle¹, Eugene Oteng-Ntim³

1 Faculty of Epidemiology and Population Health, London School of Hygiene and Tropical Medicine, London, United Kingdom, **2** Women's Health Academic Centre, King's College London, London, United Kingdom, **3** Department of Women's Health, Guy's and St Thomas' NHS Foundation Trust, London, United Kingdom

* laura.oakley@lshtm.ac.uk



Abstract

Objective

To investigate the ethnicity-specific association between body mass index (BMI) and diabetes in pregnancy, with a focus on the appropriateness of using BMI cut-offs to identify pregnant women at risk of diabetes.

Study design

Analysis of routinely-collected data from a maternity unit in London, UK. Data were available on 53 264 women delivering between 2004 and 2012. Logistic regression was used to explore the association between diabetes in pregnancy and BMI among women of different ethnicities, and adjusted probability estimates were used to derive risk equivalent cut-offs. ROC curve analysis was used to assess the performance of BMI as a predictor of diabetes in pregnancy.

Results

The prevalence of diabetes in pregnancy was 2.3% overall; highest in South and East Asian women (4.6% and 3.7%). In adjusted analysis, BMI category was strongly associated with diabetes in all ethnic groups. Modelled as a continuous variable with a quadratic term, BMI was an acceptable predictor of diabetes according to ROC curve analysis. Applying a BMI cut-off of 30 kg/m² would identify just over half of Black women with diabetes in pregnancy, a third of White (32%) and South Asian (35%) women, but only 13% of East Asian women. The 'risk equivalent' (comparable to 30 kg/m² in White women) threshold for South Asian and East Asian women was approximately 21 kg/m², and 27.5 kg/m² for Black women.

Conclusions

This study suggests that current BMI thresholds are likely to be ineffective for diabetes screening in South and East Asian women, as many cases of diabetes will occur at low BMI

OPEN ACCESS

Citation: Nishikawa E, Oakley L, Seed PT, Doyle P, Oteng-Ntim E (2017) Maternal BMI and diabetes in pregnancy: Investigating variations between ethnic groups using routine maternity data from London, UK. PLoS ONE 12(6): e0179332. <https://doi.org/10.1371/journal.pone.0179332>

Editor: Cheryl S. Rosenfeld, University of Missouri Columbia, UNITED STATES

Received: December 13, 2016

Accepted: May 26, 2017

Published: June 22, 2017

Copyright: © 2017 Nishikawa et al. This is an open access article distributed under the terms of the [Creative Commons Attribution License](https://creativecommons.org/licenses/by/4.0/), which permits unrestricted use, distribution, and reproduction in any medium, provided the original author and source are credited.

Data Availability Statement: Data analysed in this study were provided by a third party (Guy's and St Thomas' NHS Foundation Trust). Data cannot be shared by the authors due to the presence of personally identifiable/sensitive information. Individuals wishing to request access to the data are advised to contact admin-womenshealth@kcl.ac.uk. Any application to use the data is subject to ethical and governance approvals.

Funding: Paul T Seed is partly funded by Tommy's (Registered charity no. 1060508) and by CLAHRC South London (NIHR).

Competing interests: The authors have declared that no competing interests exist.

levels. Our results suggest that East Asian women appear to face a similarly high risk of diabetes to South Asian women. Current UK guidelines recommend diabetes screening should be offered to all pregnant South Asian women; extending this recommendation to include women of East Asian ethnicity may be appropriate.

Introduction

Gestational diabetes mellitus (GDM) is defined as glucose intolerance that is first diagnosed during pregnancy[1]. Pregnancies complicated by diabetes are associated with an increased risk of negative outcomes for both the mother and child[2–4]. Additionally, as 40–60% of women with GDM go on to develop type 2 diabetes in later life, prevention and treatment of this disease has both short and long term implications[2, 5].

It is widely accepted that obesity is a risk factor for GDM. A recent meta-analysis found that the risk of an obese pregnant woman developing GDM was four times higher than that of a normal-weight woman[2]. In the United Kingdom, the National Institute for Health and Care Excellence (NICE) recommends that all women who are classified as obese should be screened for GDM in their pregnancy[1]. There has been concern about the definition of obesity as well as the usefulness of the standard BMI cut-offs in certain ethnic groups, particularly Asian populations[6]. In 2004, a World Health Organization (WHO) consultation concluded that the current BMI cut-offs were not appropriate in Asian populations, as they experienced a high risk for obesity-related diseases at a BMI lower than 25 kg/m². Due to limited research evidence, no firm recommendations were made regarding alternative cut-offs, although the WHO did suggest further public health action points of 23.0 kg/m², 27.5 kg/m², 32.5 kg/m² and 37.5 kg/m² be used for Asian populations[7].

More recent research has further investigated these findings. In Canada, Retnakaran et al. found that an increasing BMI caused a much larger increase in insulin resistance and higher prevalence of GDM in pregnant South and East Asian women when compared to White women[8]. In the US, Shah et al. found that screening women with a BMI >25 kg/m² identified only 24.9% of Asian women with GDM, as opposed to 46.2% of White women, and 76.8% of Black women. A lower cut-off of 21 kg/m² still only identified 68.4% of Asians[9]. In the UK, Bryant et al. reported that Pakistani women had a higher prevalence of GDM, however, as the risk increased continuously, a lower BMI threshold (27.5 kg/m² rather than 30 kg/m²) was no more effective at identifying women at risk[Bryant, 2014 #2].

Although these studies provide evidence for differences in gestational diabetes risk based on ethnicity, there is a limited amount of relevant research, particularly in UK populations[10]. It is still unclear whether ethnicity-specific BMI cut-offs would be useful, and if so, what these cut-offs should be. NICE guidelines on diabetes in pregnancy suggest that “minority ethnic family origin with a high prevalence of diabetes” (defined elsewhere as South Asian, black Caribbean or Middle Eastern) should be an indicator for offering screening for GDM; however some non-White groups (e.g. East Asian) do not fall within this classification[1].

The aim of this study was to investigate the association between BMI and the risk of diabetes in pregnancy and how this varies by ethnic group in a diverse London population, with a focus on the use of existing and risk-equivalent cut-offs.

Material and methods

Study design and setting

We included all women with singleton births at 22 weeks gestation and beyond delivering between 2004 and 2012 at a large maternity unit located in London, UK. Ethical approval was granted from the London School of Hygiene and Tropical Medicine Ethics Committee, and all identifiable patient information was removed from the dataset before analysis.

Variable description

The primary outcome variable was maternal diabetes mellitus. The dataset did not distinguish between previous diabetes diagnosed before pregnancy and GDM diagnosed during pregnancy, so the variable was simply the presence or absence of diabetes mellitus in pregnancy.

The primary exposure variables were maternal BMI and ethnicity. BMI was calculated from the mother's height and weight taken at the first booking appointment [weight in kg/(height in m)²], and classified according to the WHO BMI categories: underweight (<18.5 kg/m²), recommended weight (18.5–24.9 kg/m²), overweight (25.0–29.9 kg/m²), obese class I (30.0–34.9 kg/m²), obese class II (35.0–39.9 kg/m²), and obese class III (40+ kg/m²)⁽⁹⁾. Implausible BMI values <14 and >60 were coded as missing. For investigating equivalent risk cut-offs, we modelled BMI as a continuous variable. We assessed potential non-linear effects of BMI using polynomial models.

Ethnicity was self-reported by women and recorded by a midwife at the first booking appointment. Five ethnicity categories were created: "White" (British, English, European, White-Other), "South Asian" (Asian, British-Asian, Asian-Other, Indian, Bangladeshi, Pakistani, Sri Lankan), "East Asian" (Chinese, Filipino, Japanese, Vietnamese), "Black" (Black, Black-British, Black-African, Black-Other, Caribbean, African), and "Other" (Latin American, Middle Eastern, Arabic, Mixed, Other).

Other covariates included maternal age at delivery (20 years, 20–24 years, 25–29 years, 30–34 years, 35–39 years, and 40+ years) and parity (nulliparous: no previous births, primiparous: one previous birth, and multiparous: two+ previous births). Deprivation was measured using the Index of Multiple Deprivation 2007, a recognized scoring system developed by the UK government that classifies areas on a relative measure of deprivation based on the mother's postcode^[11].

Statistical analysis

Descriptive statistics were presented for all women and separately by ethnic group. Odds ratios for the association between diabetes and main explanatory variables (BMI and ethnicity) were calculated using univariate and multivariate logistic regression. Multivariate models were adjusted for other variables found to be independently associated with diabetes ($p < 0.05$ using a Wald test), and not thought to be on the causal pathway. Interaction between BMI and ethnicity was investigated by including interaction terms in multivariate models. Robust standard errors were used to account for women who had more than one birth within the eight-year time period. We obtained adjusted probability estimates for diabetes by BMI stratified by ethnic group using the Stata 'margins' command following a model including BMI as a continuous variable. We used these predictions to estimate 'risk equivalent' BMI cutpoints using White women as the reference group. We performed ROC (receiver operating characteristic) curve analysis to assess the value of BMI as a predictor of diabetes among different ethnic groups. All analyses were performed using Stata 14 (Stata Corporation, College Station, Texas).

Results

The study population included 53 264 mothers delivering singleton births between 2004 and 2012. Descriptive characteristics for the whole population are shown in [Table 1](#). Roughly 60% of the women were of recommended BMI, 25% were overweight and 15% were obese. A small percentage were underweight (3.3%). Half the sample was of White ethnicity (50.4%). Over 30% of the women were aged 30–34, and almost 60% were nulliparous. The majority of women (almost 80%) fell within the two most deprived quintiles.

Differences in BMI distributions by ethnic group are shown in [Fig 1](#). Using conventional BMI thresholds, Black women had the highest proportion of both overweight (34%) and obesity (25%). The next highest level of overweight and obesity was in women of other ethnicities (25% overweight, 13.5% obesity), followed by South Asian (24.3% overweight, 9.7% obesity) and White women (19.6%, 9.5%). East Asian women had the lowest proportions of both overweight and obesity (10.8%, 3.3%). Applying Asian-specific BMI cut-offs (overweight 23–27.4 kg/m², obesity ≥ 27.5 kg/m²) in this population resulted in 52.3% of South Asian women classified as overweight or obese, compared to 34.0% with conventional thresholds. The percentage of East Asian women classified as overweight or obese doubled with the use of Asian-specific BMI cut-offs (29.2% vs. 14.0%).

The prevalence of diabetes in the total population was 2.3%. South Asians had the highest prevalence of diabetes at 4.6%, and White women had the lowest prevalence at 1.5% ([Table 1](#)).

In univariate analysis the odds of diabetes increased with increasing BMI category, and all non-White ethnicities were associated with a higher odds of diabetes ([Table 1](#)). The odds of diabetes increased both with increasing maternal age, and increased parity. Compared to women living in the most deprived quintile, women living in less deprived quintiles had lower odds of diabetes.

Odds ratios adjusted for maternal age, parity and deprivation are presented for the main explanatory variables BMI and ethnicity are presented in [Table 2](#). BMI remained associated with diabetes after adjustment for other factors. Overweight women experienced 2.37 higher odds, and obese women, 5.88 higher odds of diabetes than that of normal weight women (95% CI 2.00–2.80, $p < 0.001$; and 4.97–6.96, $p < 0.001$ respectively). This trend continued to obese class III women, where the adjusted odds ratio (aOR) reached 9.99 (95% CI 7.46–13.38, $p < 0.001$). Using the traditional BMI cut-off of 30 kg/m² for obesity, the adjusted odds of diabetes in obese women were 3.97 times that of non-obese women (95% CI 3.44–4.58, $p < 0.001$). All non-White ethnicities continued to be strongly associated with a higher odds of diabetes in adjusted analysis. The highest odds were observed for South Asian and East Asian ethnicities (South Asian aOR 3.15, 95% CI 2.51–3.97; East Asian aOR 3.10, 95% 2.29–4.19).

[Table 3](#) displays the performance parameters of different BMI cut-offs for each ethnic group. A BMI cut-off of 25 kg/m² would capture 59% of all White women with diabetes in pregnancy, 68% of South Asian women, 86% of Black women, but only 37% of East Asian women. Applying a BMI cut-off of 30 kg/m² would identify just over half of Black women with diabetes in pregnancy, a third of White (32%) and South Asian (35%) women, but only 13% of East Asian women.

The fit between BMI as a continuous predictor (in 1 kg/m² increments) and risk of DM was slightly improved by using a quadratic polynomial term. Adjusted estimates of the prevalence of diabetes by BMI and ethnic group calculated using BMI as a quadratic term are presented in [Fig 2](#). This figure shows an increased risk of diabetes at all BMI points for South Asian and East Asian women. At the conventional threshold of 'overweight' (BMI ≥ 25) and 'obese' (BMI ≥ 30), the prevalence of diabetes in White women was 1.7% and 3.0%. The corresponding figures for South Asian women were 5.1% and 9.0% with similar figures for East Asian

Table 1. Descriptive characteristics and univariate analysis of factors associated with diabetes in pregnancy.

Variable	Total Births		Diabetes*		Crude OR† (95%CI)	P-Value‡
	n	%	n	%		
Maternal BMI						
Underweight: <18.5	1397	3.28	10	0.72	0.53 (0.28–0.99)	0.048
Normal: 18.5–24.9	24,417	57.33	327	1.34	1.00	
Overweight: 25.0–29.9	10,495	24.64	340	3.24	2.47 (2.10–2.89)	<0.001
Obese: >30	6,282	14.75	485	7.72	6.16 (5.30–7.17)	<0.001
<i>Obese Class I: 30.0–34.9</i>	4,173	9.8	258	6.18	4.85 (4.08–5.78)	<0.001
<i>Obese Class II: 35.0–39.9</i>	1,480	3.47	152	10.27	8.43 (6.85–10.39)	<0.001
<i>Obese Class III: >40.0</i>	629	1.48	75	11.92	9.97 (7.56–13.16)	<0.001
<i>Total</i>	42,591	100	1162	2.73		
<i>Missing Data</i>	10,673	20.04	66			
Obesity§						
No	36,309	85.25	677	1.86	1.00	
Yes	6282	14.75	485	7.72	4.40 (3.88–5.00)	<0.001
<i>Total</i>	42,591	100	1,162	2.73		
<i>Missing Data</i>	10,673	20.04	66			
Ethnicity						
White	26,433	50.4	405	1.53	1.00	
S Asian	2957	5.64	135	4.57	3.07 (2.47–3.83)	<0.001
E Asian	1623	3.09	60	3.70	2.47 (1.86–3.27)	<0.001
Black	17,313	33.01	522	3.02	2.00 (1.73–2.30)	<0.001
Other	4119	7.86	91	2.21	1.45 (1.14–1.85)	0.002
<i>Total</i>	52445	100	1213	2.31		
<i>Missing Data</i>	819	1.54	15			
Maternal Age						
<20	2039	3.83	10	0.49	0.27 (0.14–0.51)	<0.001
20–24	7215	13.55	85	1.18	0.65 (0.50–0.85)	0.002
25–29	12,121	22.75	218	1.80	1.00	
30–34	17,461	32.78	412	2.36	1.32 (1.12–1.56)	0.001
35–39	11,436	21.47	359	3.14	1.77 (1.48–2.11)	<0.001
40+	2,992	5.62	144	4.81	2.76 (2.22–3.43)	<0.001
<i>Total</i>	53264	100	1228	2.31		
<i>Missing Data</i>	0	0	0			
Parity						
Nulliparous	30,843	57.98	527	1.71	1.00	
Parity 1	13,185	24.79	355	2.69	1.59 (1.40–1.81)	<0.001
Parity 2+	9165	17.23	345	3.76	2.25 (1.95–2.59)	<0.001
<i>Total</i>	53,193	100	1227	2.31		
<i>Missing Data</i>	71	0.13	1			
Index of Deprivation						
1 (least deprived)	1635	3.09	38	2.32	0.82 (0.56–1.19)	0.3
2	3056	5.78	53	1.73	0.61 (0.53–0.82)	0.002
3	6070	11.48	114	1.88	0.66 (0.53–0.82)	<0.001
4	23,983	45.35	502	2.09	0.74 (0.64–0.84)	<0.001
5 (most deprived)	18,135	34.30	512	2.82	1.00	
<i>Total</i>	52879	100	1219	2.31		

(Continued)

Table 1. (Continued)

Variable	Total Births		Diabetes*		Crude OR† (95%CI)	P-Value‡
	n	%	n	%		
Missing Data	385	0.71	9			

*Diabetes in pregnancy

†OR calculated using univariate logistic regression

‡P-values calculated using Wald tests

§BMI > 30 kg/m²

<https://doi.org/10.1371/journal.pone.0179332.t001>

women (5.0% and 8.5%). The dashed line on Fig 2 represents the prevalence of diabetes in White women at BMI 30. The ‘risk equivalent’ (comparable to 30 kg/m² in White women) threshold for South Asian and East Asian women was approximately 21 kg/m², and 27.5 kg/m² for Black women.

Using BMI as a continuous predictor, the area under the ROC curve was 0.75 for South Asian women, 0.73 for Black women, 0.71 for White women, and 0.70 for East Asian women (Fig 3). These results suggest that BMI is an acceptable predictor of diabetes in pregnancy for all ethnic groups.

Missing data

Data on BMI was missing for 20% of women. For all other variables, missing data was less than 2%. To assess any patterns, BMI was cross-tabulated with variables of interest (S1 Table). Women with missing BMI were less likely to have diabetes in pregnancy (0.6% vs 2.7%). They were slightly more likely to live in less deprived areas (4.8% vs 2.7% in the 1st quintile), and to

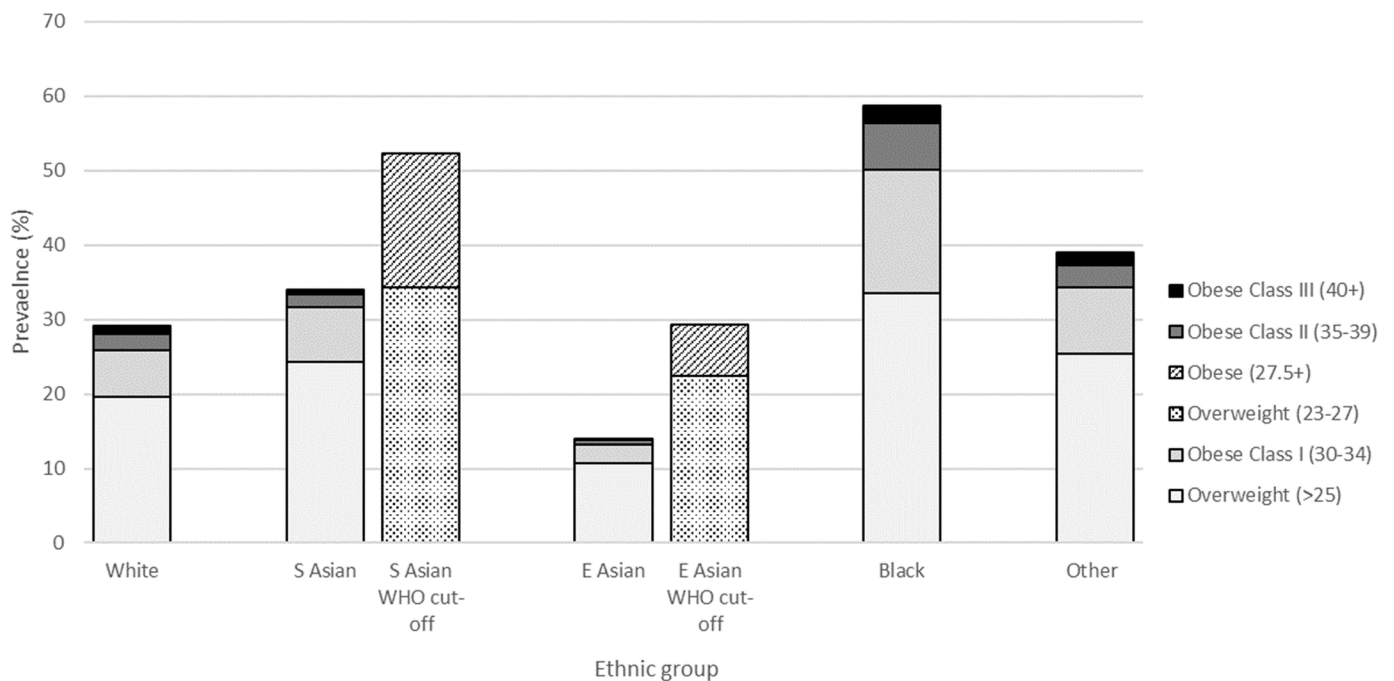


Fig 1. Prevalence of overweight/obesity by ethnic group, using conventional and Asian-specific thresholds.

<https://doi.org/10.1371/journal.pone.0179332.g001>

Table 2. Multivariate analysis of factors associated with diabetes in pregnancy.

Variable	Adjusted OR* (95%CI)	P-value†
Maternal BMI		
Underweight: <18.5	0.53 (0.28–1.00)	0.051
Normal: 18.5–24.9	1.00	
Overweight: 25.0–29.9	2.37 (2.00–2.80)	<0.001
Obese: >30	5.88 (4.97–6.96)	<0.001
<i>Obese Class I: 30.0–34.9</i>	4.64 (3.84–5.61)	<0.001
<i>Obese Class II: 35.0–39.9</i>	8.08 (6.44–10.14)	<0.001
<i>Obese Class III: >40.0</i>	9.99 (7.46–13.38)	<0.001
Obesity‡		
No	1.00	
Yes	3.97 (3.44–4.58)	<0.001
Ethnicity		
White	1.00	
S Asian	3.15 (2.51–3.97)	<0.001
E Asian	3.10 (2.29–4.19)	<0.001
Black	1.28 (1.09–1.50)	0.003
Other	1.31 (1.02–1.70)	0.036

*AOR calculated using multivariate logistic regression, adjusted for maternal age, parity, deprivation and either BMI or ethnicity.

†P values calculated using Wald tests.

‡BMI ≥ 30 kg/m²

<https://doi.org/10.1371/journal.pone.0179332.t002>

be nulliparous (63.9% vs 56.5%). Women with missing BMI were very slightly older (29.5% vs 26.5% aged ≥35) and slightly less likely to be East Asian (2.6% v 3.2%).

Discussion

In this study conducted on a large, diverse London population, the prevalence of diabetes in pregnancy was 2.3%. This is consistent with national prevalence estimates by the Royal College of Obstetricians and Gynaecologists in 2011, which state that GDM affects up to 3.5% of all pregnancies[12]. We found that increasing BMI was associated with a higher odds of diabetes after adjusting for ethnicity, maternal age, parity and deprivation[1, 2, 5, 13–15]. Ethnicity was also associated with diabetes; after adjustment, South and East Asian women had three times higher odds of diabetes in pregnancy compared to White women. This finding is consistent with previous studies[8, 13, 16–19], many of which have also suggested that obesity affects GDM risk differently by ethnicity, with an increased risk in South and/or East Asian women specifically[8, 13, 14, 16, 17, 20]. We found some evidence that the association between obesity and diabetes risk varied by ethnicity when BMI was used as a categorical variable (p value for interaction 0.043), but there was little evidence of interaction when BMI was modelled as continuous with a quadratic term.

Our findings confirm that BMI is an acceptable predictor of diabetes in pregnancy. We found that both South and East Asian women were at a higher risk for diabetes at all specified BMI points when compared to other women. The predicted diabetes risk at all BMI points was similar for South and East Asians, despite a much lower prevalence of overweight and obesity in East Asians (10.8% and 3.3%) compared to South Asians (24.3% and 9.7%). This finding is of particular interest, as East Asian ethnicity is not generally considered a risk factor for

Table 3. Sensitivity, specific, PPV and NPV for specified BMI cut-offs, by ethnic group.

BMI cut-off	Ethnic group	sensitivity	specificity	PPV	NPV
20 kg/m ²	White	95.2%	14.0%	2.1%	99.4%
	South Asian	95.0%	15.8%	5.9%	98.6%
	East Asian	88.9%	26.5%	4.8%	98.3%
	Black	98.8%	6.2%	3.8%	99.2%
21.5 kg/m ²	White	87.5%	33.7%	2.4%	99.3%
	South Asian	93.6%	31.7%	7.0%	98.9%
	East Asian	74.1%	53.5%	6.2%	98.0%
	Black	96.8%	14.6%	4.0%	99.2%
23 kg/m ²	White	75.8%	52.6%	2.9%	99.1%
	South Asian	85.7%	49.4%	8.5%	98.3%
	East Asian	61.1%	72.1%	8.4%	97.8%
	Black	92.7%	25.5%	4.4%	98.9%
25 kg/m ²	White	59.2%	71.4%	3.8%	98.9%
	South Asian	67.7%	67.9%	10.4%	97.4%
	East Asian	37.0%	86.9%	10.6%	97.1%
	Black	86.2%	42.3%	5.3%	98.8%
27.5 kg/m ²	White	43.9%	84.2%	5.0%	98.8%
	South Asian	47.6%	83.6%	13.8%	96.7%
	East Asian	25.9%	94.0%	15.2%	96.8%
	Black	72.1%	61.5%	6.5%	98.0%
30 kg/m ²	White	32.1%	90.0%	6.3%	98.6%
	South Asian	34.7%	91.7%	18.7%	96.2%
	East Asian	13.0%	97.1%	15.9%	96.4%
	Black	56.3%	75.9%	8.0%	97.9%

PPV: Positive predictive value, NPV: Negative predictive value

<https://doi.org/10.1371/journal.pone.0179332.t003>

gestational diabetes. A number of mechanisms have been proposed to explain why Asians have a higher risk of diabetes than people of European descent. One such explanation is that Asians have a genetic predisposition for insulin resistance due to mutations in various genes that code for proteins along the insulin pathway. Several genetic variants that have been isolated were found to be associated with type 2 diabetes in different Asian populations[21]. Research also suggests evidence for a thrifty gene, which allows individuals to store calories more efficiently in times of starvation. As Asians may have been more exposed to starvation, especially in developing countries such as those in South Asia, they may be more likely to inherit the gene. However, once exposed to the high-fat diets in the UK, this gene may make it more difficult to control body weight[14, 21, 22]. South Asians have also been found to have more central adiposity which is associated with increased insulin resistance[8, 14, 21, 22].

Current NICE guidelines specify a number of risk factors for diabetes in pregnancy, including minority ethnic family origin (including South Asian, but not East Asian), and obesity (defined as ≥ 30 kg/m²)[1]. There has been considerable debate about implementing lower cut-offs to define obesity among Asian groups, as suggested by the WHO. We suggest that this is not a solution: in our study, a cut-off of 27.5 kg/m² corresponds to a predicted diabetes prevalence of 6.9% in South Asians and 6.6% in East Asians which is still considerably higher than the 3.0% predicted in White women at the same BMI level. NICE guidelines (2013) on the prevention of ill health in minority ethnic group populations made several research

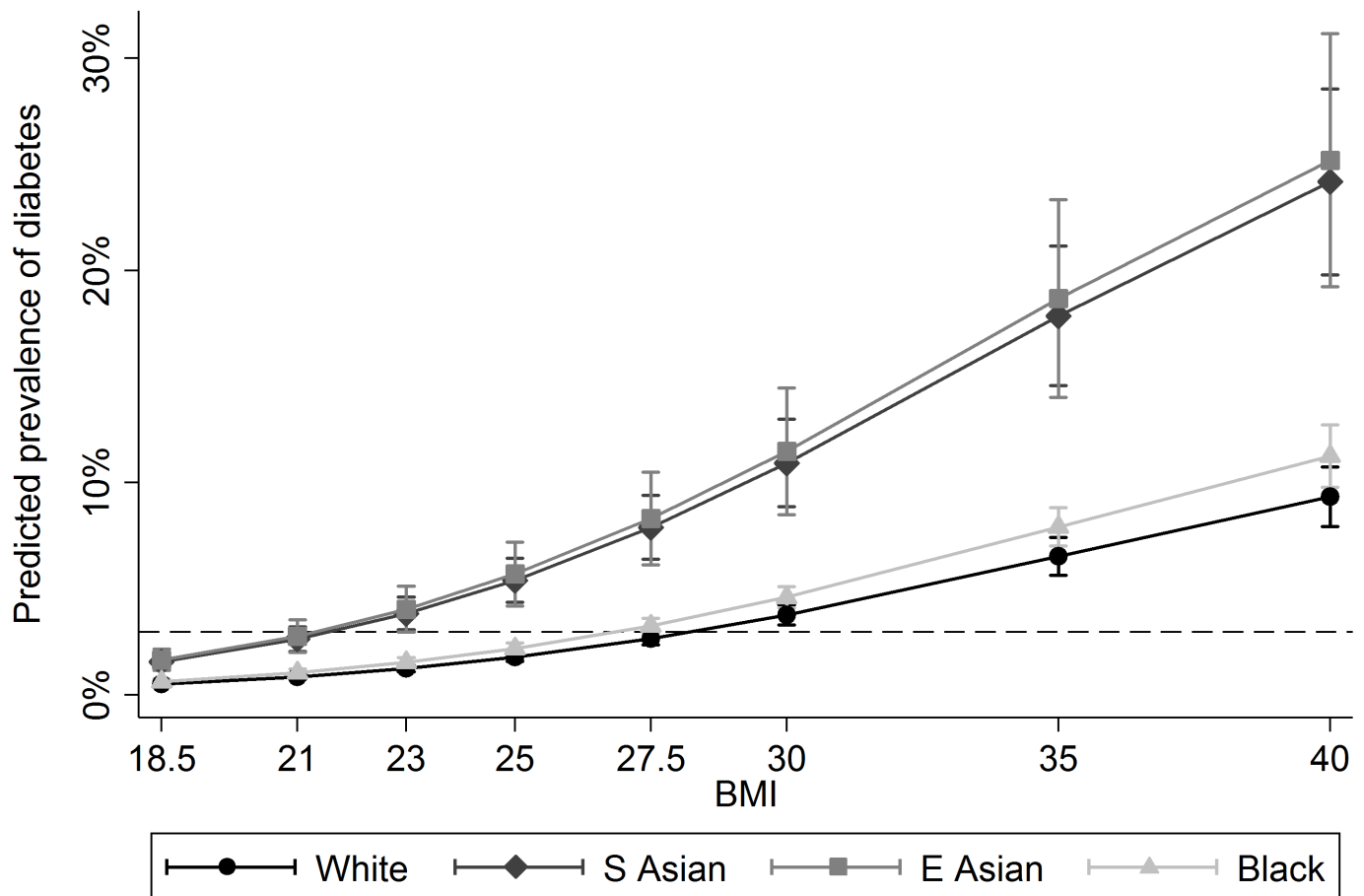


Fig 2. Predicted prevalence of diabetes by BMI and ethnic group.

<https://doi.org/10.1371/journal.pone.0179332.g002>

recommendations, including the need to assess what the BMI cut-off points should be among different ethnic groups in order to be “risk equivalent” for predicting obesity-related diseases [23]. Although this guideline was made for the general (non-pregnant) population, other studies have made similar calls for research in pregnant women [8, 10]. We attempted to derive risk equivalent cut-offs to determine the appropriate BMI threshold needed to detect a similar prevalence of diabetes among non-White women to that currently observed in White women at the conventional 25 kg/m² and 30 kg/m² cut-offs. To detect a diabetes prevalence of 3.0% in South and East Asian women (the prevalence detected in White women at BMI 30 kg/m²), the cut-off would need to be roughly 21 kg/m². In this study population, 75% of South Asian women and 56% of East Asian women had a BMI ≥ 21 kg/m². Applying ‘risk equivalent’ cut-offs to South and East Asian women would therefore result in the majority of women from these ethnic groups being classified as high risk due to BMI. A more effective method for identifying Asian women with GDM would be to implement universal screening for all Asian women regardless of their BMI. The inappropriateness of defining a BMI of ≥ 30 kg/m² as a risk factor for diabetes in pregnancy among South and East Asian women is supported by a study conducted among Chinese, Malay and Indian women in Singapore, in which compared to universal screening, high risk screening (based on NICE guidelines) detected only one third of GDM cases in Chinese women and one half of cases in all women [24]. Shah et al. reached a

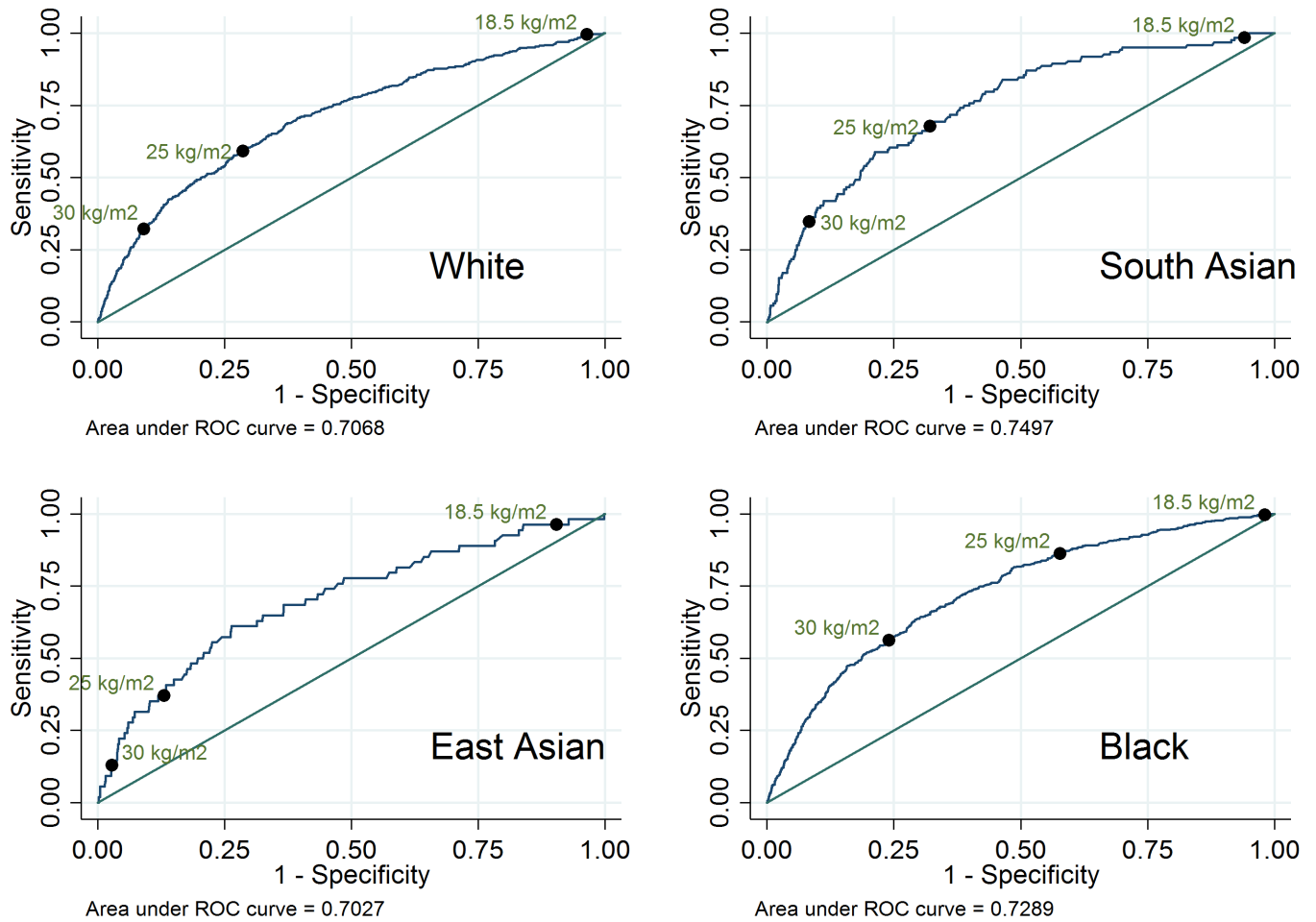


Fig 3. ROC curves for diabetes in pregnancy by BMI, by ethnic group.

<https://doi.org/10.1371/journal.pone.0179332.g003>

similar conclusion in the US[9]. As GDM is one of several diseases associated with obesity, it is likely that a BMI cut-off of ≥ 30 kg/m² is failing to identify women with other problems during pregnancy. Thus using the same BMI cut-offs for all women may increase inequalities between ethnic groups, as many Asian women are being wrongly assigned to low-risk care[10].

This study may have overestimated GDM prevalence, as there was no way of differentiating between previously diagnosed diabetes and true GDM. However, as gestational diabetes accounts for up to 90% of diabetes in pregnancy, it was considered an appropriate proxy[5] and the prevalence of diabetes in our study is consistent with estimates from other sources[1, 12]. As height and weight were measured at the first antenatal appointment, BMI values may be inaccurate for women who initiated antenatal care later in pregnancy. NHS statistics estimated that in 2012–13, 73% of women in England attended their first appointment within 12 weeks gestation[25]. Ethnicity was self-reported by the women and recorded by midwives; however, it is possible that ethnicity was assumed by midwives in some cases leading to possible misclassification. Collapsing ethnicity into five categories may also have been problematic. For example, Black women included women of Black African and Black Caribbean descent, who may experience different risks.

Despite the large number of births, diabetes in pregnancy was a rare outcome, which led to a small number of cases, especially when stratified by ethnic group. Missing data was another limitation, as 20% of women were missing information on BMI. Analysis revealed that few women with missing BMI data had diabetes. It may be that women who appeared to be of a healthy weight were assumed to have a normal BMI and not weighed. Since BMI was unlikely to be missing completely at random, this could have biased the estimates of diabetes prevalence in this study. Finally, although several important confounding factors were adjusted for, it is expected that residual confounding still exists. Other potential confounders include family history of diabetes, smoking, and hypertensive disorders.

The important strengths of this study were the large sample size and the ethnic diversity of the study population. A total of 53 264 women were included, and almost 50% were of non-White ethnicities. We were able to investigate risks for East Asians and South Asians separately, in contrast to many previous studies—particularly those conducted in North America—which combine these two together[9, 17]. Another important strength was the minimal selection bias, as this was a complete dataset including all deliveries occurring at the unit between 2004 and 2012. Furthermore, the completeness of the dataset meant that important confounders such as maternal age, parity and deprivation could be adjusted for.

Conclusions

South and East Asian women are at higher risk of diabetes at considerably lower BMI thresholds compared to White and other non-White groups. Implementing the WHO recommended Asian-specific cut-off of 27.5 kg/m² to define obesity has limited value, as at this BMI level South and East Asian women are likely to have a risk of diabetes over twice that of White women at 30 kg/m². Any screening strategy which prioritises pregnant women for screening on the basis of BMI alone will not be an effective method for identifying women with gestational diabetes from South and East Asian backgrounds. Screening all Asian women for diabetes in pregnancy as a standard of care is likely to be a more effective method for identifying women at risk.

Supporting information

S1 Table. Comparison of characteristics between women with known BMI and women with missing BMI.

(PDF)

Author Contributions

Conceptualization: EO EN PD.

Data curation: PTS.

Formal analysis: EN PD LO PTS.

Investigation: EO EN PD LO.

Resources: EO PTS.

Supervision: EO PD.

Visualization: LO EN.

Writing – original draft: EN LO.

Writing – review & editing: EN LO PTS PD EO.

References

1. National Collaborating Centre for Women's and Children's Health. Diabetes in pregnancy: management of diabetes and its complications from preconception to the postnatal period (NICE guideline NG3). London, 2015.
2. Chu SY, Callaghan WM, Kim SY, Schmid CH, Lau J, England LJ, et al. Maternal obesity and risk of gestational diabetes mellitus. *Diabetes Care*. 2007; 30:2070–6. <https://doi.org/10.2337/dc06-2559a> PMID: [17416786](https://pubmed.ncbi.nlm.nih.gov/17416786/).
3. The HAPO Study Cooperative Research Group. Hyperglycemia and adverse pregnancy outcomes. *The New England Journal of Medicine*. 2008; 358:1991–2002. <https://doi.org/10.1056/NEJMoa0707943> PMID: [18463375](https://pubmed.ncbi.nlm.nih.gov/18463375/).
4. Mitanchez D, Zydorczyk C, Simeoni U. What neonatal complications should the pediatrician be aware of in case of maternal gestational diabetes? *World Journal of Diabetes*. 2015; 6:734–43. <https://doi.org/10.4239/wjd.v6.i5.734> PMID: [26069722](https://pubmed.ncbi.nlm.nih.gov/26069722/)
5. Mpondo BCT, Ernest A, Dee HE. Gestational diabetes mellitus: challenges in diagnosis and management. *Journal of Diabetes & Metabolic Disorders*. 2015; 14:1–7. <https://doi.org/10.1186/s40200-015-0169-7> PMID: [25977899](https://pubmed.ncbi.nlm.nih.gov/25977899/)
6. Misra A, Chowbey P, Makkar BM, Vikram NK, Wasir JS, Chadha D, et al. Consensus statement for diagnosis of obesity, abdominal obesity and the metabolic syndrome for Asian Indians and recommendations for physical activity, medical and surgical management. *Journal of Association of Physicians of India*. 2009; 57:163–70. PMID: [19582986](https://pubmed.ncbi.nlm.nih.gov/19582986/).
7. WHO Expert Consultation. Appropriate body-mass index for Asian populations and its implications for policy and intervention strategies. *The Lancet*. 2004; 363:157–63.
8. Retnakaran R, Hanley AJ, Connelly PW, Sermer M, Zinman B. Ethnicity modifies the effect of obesity on insulin resistance in pregnancy: A comparison of Asian, South Asian, and Caucasian women. *Journal of Clinical Endocrinology and Metabolism*. 2006; 91:93–7. <https://doi.org/10.1210/jc.2005-1253> PMID: [16249285](https://pubmed.ncbi.nlm.nih.gov/16249285/).
9. Shah A, Stotland NE, Cheng YW, Ramos GA, Caughey AB. The association between body mass index and gestational diabetes mellitus varies by race/ethnicity. *American Journal of Perinatology*. 2011; 28:515–20. <https://doi.org/10.1055/s-0031-1272968> PMID: [21404165](https://pubmed.ncbi.nlm.nih.gov/21404165/).
10. Heslehurst N, Sattar N, Rajasingam D, Wilkinson J, Summerbell CD, Rankin J. Existing maternal obesity guidelines may increase inequalities between ethnic groups: a national epidemiological study of 502,474 births in England. *BMC pregnancy and childbirth*. 2012; 12:156. <https://doi.org/10.1186/1471-2393-12-156> PMID: [23249162](https://pubmed.ncbi.nlm.nih.gov/23249162/).
11. Department for Communities and Local Government. The English Indices of Deprivation 2010. 2011 9781409829225.
12. Royal College of Obstetricians and Gynaecologists. Diagnosis and Treatment of Gestational Diabetes. 2011.
13. Kim SY, England L, Sappenfield W, Wilson HG, Bish CL, Salihi HM, et al. Racial/ethnic differences in the percentage of gestational diabetes mellitus cases attributable to overweight and obesity, Florida, 2004–2007. *Preventing Chronic Disease*. 2012; 9. <https://doi.org/10.5888/pcd9.110249> PMID: [22515970](https://pubmed.ncbi.nlm.nih.gov/22515970/).
14. Makgoba M, Savvidou MD, Steer PJ. An analysis of the interrelationship between maternal age, body mass index and racial origin in the development of gestational diabetes mellitus. *BJOG*. 2012; 119: 276–82. <https://doi.org/10.1111/j.1471-0528.2011.03156.x> PMID: [22044452](https://pubmed.ncbi.nlm.nih.gov/22044452/).
15. Hsu WC, Araneta MRG, Kanaya AM, Chiang JL, Fujimoto W. BMI cut points to identify at-risk Asian Americans for type 2 diabetes screening. *Diabetes Care*. 2015; 38:150–8. <https://doi.org/10.2337/dc14-2391> PMID: [25538311](https://pubmed.ncbi.nlm.nih.gov/25538311/)
16. Bryant M, Santorelli G, Lawlor DA, Farrar D, Tuffnell D, Bhopal R, et al. A comparison of South Asian specific and established BMI thresholds for determining obesity prevalence in pregnancy and predicting pregnancy complications: findings from the Born in Bradford cohort. *International journal of obesity (2005)*. 2014; 38:444–50. <https://doi.org/10.1038/ijo.2013.117> PMID: [23797188](https://pubmed.ncbi.nlm.nih.gov/23797188/).
17. Hedderson M, Ehrlich S, Sridhar S, Darbinian J, Moore S, Ferrara A. Racial/ethnic disparities in the prevalence of gestational diabetes mellitus by BMI. *Diabetes Care*. 2012; 35:1492–8. <https://doi.org/10.2337/dc11-2267> PMID: [22619080](https://pubmed.ncbi.nlm.nih.gov/22619080/).
18. Khalil A, Rezende J, Akolekar R, Syngelaki A, Nicolaidis KH. Maternal racial origin and adverse pregnancy outcome: a cohort study. *Ultrasound in Obstetrics and Gynecology*. 2013; 41:278–85. <https://doi.org/10.1002/uog.12313> PMID: [23023978](https://pubmed.ncbi.nlm.nih.gov/23023978/).
19. McDonald R, Karahalios A, Le T, Said J. A retrospective analysis of the relationship between ethnicity, body mass index, and the diagnosis of gestational diabetes in women attending an Australian antenatal

- clinic. *International Journal of Endocrinology*. 2015;2015. <https://doi.org/10.1155/2015/297420> PMID: 26504462.
20. Ramos GA, Caughey AB. The interrelationship between ethnicity and obesity on obstetric outcomes. *American Journal of Obstetrics and Gynecology*. 2005; 193:1089–93. <https://doi.org/10.1016/j.ajog.2005.06.040> PMID: 16157117.
 21. Ramachandran A, Ma RC, Snehalatha C. Diabetes in Asia. *The Lancet*. 2010; 375:408–18. [https://doi.org/10.1016/S0140-6736\(09\)60937-5](https://doi.org/10.1016/S0140-6736(09)60937-5) PMID: 19875164.
 22. Chiu M, Austin PC, Manuel DG, Shah BR, Tu JV. Deriving ethnic-specific BMI cutoff points for assessing diabetes risk. *Diabetes Care*. 2011; 34:1741–8. <https://doi.org/10.2337/dc10-2300> PMID: 21680722.
 23. National Institute for Health and Care Excellence. BMI: preventing ill health and premature death in black, Asian and other minority ethnic groups. NICE Guideline PH46. 2013.
 24. Chong YS, Cai S, Lin H, Soh SE, Lee YS, Leow MKS, et al. Ethnic differences translate to inadequacy of high-risk screening for gestational diabetes mellitus in an Asian population: a cohort study. *BMC pregnancy and childbirth*. 2014; 14. <https://doi.org/10.1186/1471-2393-14-345> PMID: 25273851.
 25. Health & Social Care Information Centre. Hospital Episode Statistics: NHS Maternity Statistics—2012–13. 2013.