

1 Trends and risk factors of stillbirths and neonatal deaths in Eastern  
2 Uganda (1982-2011): A cross-sectional, population-based study

3

4 **Authors**

5 Kujala, Sanni<sup>a</sup>, Waiswa, Peter<sup>a, b, c</sup>, Kadobera, Daniel<sup>c, d</sup>, Akuze, Joseph<sup>b</sup>, Pariyo, George<sup>c, e</sup>,  
6 Hanson, Claudia<sup>a, f</sup>

7

8 **Author affiliations**

9 a. Health System and Policy. Department of Public Health Sciences – Global Health, Karolinska  
10 Institutet, Tomtebodavägen 18 A, 171 77 Stockholm, Sweden

11 b. Maternal and Newborn Centre of Excellence, Department of Health Policy, Planning and  
12 Management, Makerere University School of Public Health, Kampala, Uganda

13 c. The INDEPTH Network Maternal and Newborn Working Group, Iganga-Mayuge Health and  
14 Demographic Surveillance Site, Iganga, Uganda

15 d. Mental Health Program, Clinical Services Division, Ministry of Health, Uganda

16 e. Department of International Health, Johns Hopkins Bloomberg School of Public Health, Johns  
17 Hopkins University, Baltimore, Maryland, USA

18 f. Faculty of Infectious & Tropical Disease, London School of Hygiene & Tropical Medicine,  
19 London WC1E 7HT, United Kingdom

20

21 **Contact details of the corresponding author:**

22 Sanni Kujala, +46 70 073 0682, sanni.kujala@gmail.com, Department of Public Health Sciences,  
23 Tomtebodavägen 18 A, 171 77 Stockholm, Sweden

24

25 **Shortened running title:**

27

28 **Abstract**

29 *Objectives:* To identify mortality trends and risk factors associated with stillbirths and neonatal  
30 deaths during 1982-2011.

31 *Methods:* Population-based cross-sectional study based on reported pregnancy history in Iganga-  
32 Mayuge Health and Demographic Surveillance Site (HDSS) in Uganda. A pregnancy history  
33 survey was conducted among women aged 15-49 living in the HDSS during May-July 2011 (n =  
34 10,540). Time trends were analysed with cubic splines and linear regression. Potential risk factors  
35 were examined with multilevel logistic regression with adjusted odds ratios (AOR) and 95%  
36 confidence intervals (CI).

37 *Results:* A total of 34,073 births in 1982-2011 were analysed. The annual rate of decrease was  
38 0.9% for stillbirths and 1.8% for neonatal mortality. Stillbirths were associated with several risk  
39 factors including multiple births (AOR 2.57, CI 1.66-3.99), previous adverse outcome (AOR  
40 6.16, CI 4.26-8.88) and grand multiparity among 35-49 year olds (AOR 1.97, CI 1.32-2.89).  
41 Neonatal deaths were associated with multiple births (AOR 6.16, CI 4.80-7.92) and advanced  
42 maternal age linked with parity of 1-4 (AOR 2.34, CI 1.28-4.25) and grand multiparity (AOR  
43 1.44, CI 1.09-1.90). Education, marital status and household wealth were not associated with the  
44 outcomes.

45 *Conclusions:* The slow decline of mortality rates and easily identifiable risk factors calls for  
46 improving quality of care at birth and a rethinking of how to address obstetric risks, potentially a  
47 revival of the risk-approach in antenatal care.

48 *Keywords:* Epidemiologic Factors; Perinatal Death; Pregnancy; Reproductive History; Stillbirth;  
49 Uganda

50

## 51 **Introduction**

52 Every year, 2.6 million infants are stillborn<sup>1</sup> and 2.7 million die during their first month of life<sup>2</sup>.  
53 An estimated 98-99% of these deaths happen in low- and middle-income countries, where they  
54 remain underreported due to a lack of registration systems, births and deaths occurring outside  
55 health facilities and cultural beliefs and stigma<sup>3,4</sup>.

56 It is estimated that stillbirth and neonatal mortality rates are highest in sub-Saharan Africa  
57 and have decreased at a markedly slower pace in the region compared to the rest of the world<sup>5,6</sup>.  
58 Uganda has the fifth highest number of stillbirths and eighth highest number of neonatal deaths in  
59 sub-Saharan Africa<sup>6</sup>. Stillbirth rates in the country are based on estimates and predictions with  
60 the exception of one study that has investigated stillbirth over time<sup>7</sup>. While a large part of  
61 stillbirths and neonatal deaths are caused by potentially preventable diseases or identifiable  
62 conditions<sup>8</sup>, 50% of stillbirths and 60% of early neonatal deaths have not been linked to any  
63 maternal condition<sup>9</sup>, highlighting the importance of identifying at-risk pregnancies.

64 Reviews suggest that stillbirths and neonatal deaths are linked to several biological and  
65 socioeconomic risk factors<sup>4,10-12</sup>. While some studies set in sub-Saharan Africa have been  
66 published, mostly from Ethiopia<sup>13-18</sup>, and Ghana<sup>19-22</sup>, a dearth of population-level studies  
67 remains. An estimated 57% of deliveries in sub-Saharan Africa take place outside health  
68 facilities<sup>23</sup>, rendering hospital-based studies unrepresentative. Moreover, findings from settings  
69 outside sub-Saharan Africa may not be generalisable due to social, cultural and economic  
70 differences. Of the population-based studies on stillbirths in sub-Saharan Africa that we  
71 identified<sup>7,11,19,20,24</sup>, one examined time trends<sup>7</sup> and one investigated associations with multiple  
72 birth, previous stillbirth and infant sex<sup>20</sup>, while none of the studies included birth intervals.

73 The Sustainable Development Goals aim to lower newborn deaths to 12/1,000 live births  
74 by 2030, while the Global Every Newborn Action Plan has set a global target of less than 10  
75 stillbirths per 1,000 births by 2035<sup>25</sup>. Achieving these goals is unlikely without significant

76 investments into research providing population estimates and guiding programmatic priorities<sup>5,26</sup>.  
77 The objective of this study was to identify risk factors of stillbirths and neonatal deaths in rural  
78 Uganda, and to depict the mortality rate trends in 1982-2011.

79

## 80 **Methods**

81

### 82 *Study setting and data collection*

83 The data used in this study were obtained from a cross-sectional survey conducted in order  
84 to investigate the reliability of mortality tracking at Iganga-Mayuge Health and Demographic  
85 Surveillance Site (HDSS). The site is located in rural Eastern Uganda, covering 65 villages with  
86 16,000 households. The socioeconomic profile of the area is homogenous, with 80% of people  
87 earning their living from subsistence farming and retail trading. One hospital, 15 health centres  
88 and 24 private clinics serve the 80,000 inhabitants. Nearly 70% of women give birth in a health  
89 facility and 30% of women attend four or more antenatal care visits.<sup>27</sup>

90 The study population consisted of women aged 15-49 living in the HDSS in May–July  
91 2011. We used a list generated from the HDSS database as a guide showing all households in the  
92 HDSS and the corresponding females in the household. The data collection team consisted of 60  
93 data collectors working in groups of ten people, visiting all households in the area and identifying  
94 and interviewing women aged 15-49. The interviewers asked all respondents what year and  
95 month they were born in and then asked for their age in years. The answers were crosschecked  
96 and the interviewers attempted to clarify any inconsistencies. If a participant was unsure of her  
97 age, the interviewer requested to see documentation containing her date of birth or attempted to  
98 estimate the date of birth based on any historical events the respondent was aware of that  
99 occurred around the time of her birth.

100 A maximum of three follow-up visits were made to women who were not home during the  
101 first visit. In total, 10,540 women were surveyed (Figure 1; study sample flow chart). During the

102 visit, the data collectors administered a pregnancy history survey. The survey recorded whether a  
 103 pregnancy resulted in a multiple or a single birth and what the outcome of the pregnancy was  
 104 (born alive, born dead, miscarriage or induced abortion). Sex of the baby and date of birth was  
 105 recorded for all pregnancies that did not result in a miscarriage or abortion. If the baby was  
 106 reported to have been born dead, the mother was asked whether the baby cried, moved or  
 107 breathed after birth in order to control for misclassification of stillbirths and newborn deaths. Age  
 108 at death was recorded for babies who were born alive but later died. If the pregnancy ended in a  
 109 miscarriage or abortion, the month and year of termination of the pregnancy and the duration of  
 110 the pregnancy were recorded.

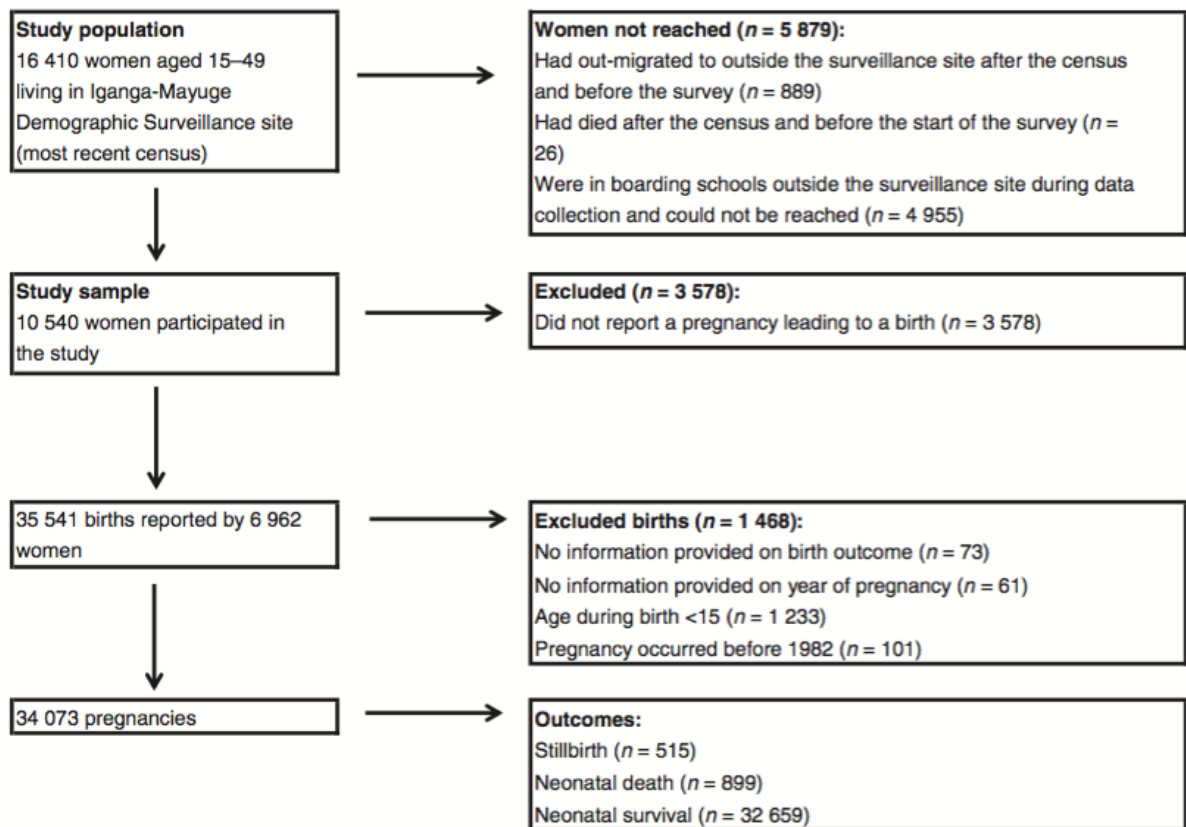


Figure 1 Participant selection flowchart

111  
 112 *Variables*  
 113 The outcome variables were stillbirth, defined as giving birth to an infant who did not move, cry  
 114 or breathe, and neonatal death, defined as death during the first 28 days of life. We used the third-

115 trimester stillbirth definition recommended for international comparison ( $\geq 28$  weeks of  
116 gestation)<sup>28</sup>. We used the year of birth for analysing time trends and as a potential confounder in  
117 the analysis for risk factors of stillbirth and neonatal death. Year of birth was treated as a  
118 continuous variable in time trend analysis and categorised into six-year intervals for the  
119 regression model: 1982-1987, 1988-1993, 1994-1999, 2000-2005, and 2006-2011.

120 We analysed associations between the outcomes and socioeconomic status, which was  
121 reflected by education, marital status and household wealth. The woman's level of education was  
122 categorised as none, primary, and secondary or higher. Marital status at the time of the survey  
123 was defined as married or single/divorced. The household wealth index was obtained from a  
124 separate module and divided into quartiles with ascending household wealth: lowest, second,  
125 third and highest. The index was created for an earlier study<sup>29</sup> by doing a principal component  
126 analysis (PCA) on variables measuring asset ownership and household characteristics<sup>30</sup>. The  
127 approach is often used in settings where it is challenging to obtain reliable estimates of income.  
128 The final list included the following variables: number of sleeping rooms, type of floor material,  
129 type of roof material, type of wall material, fuel used for cooking, source of light, and the  
130 ownership of a radio, a sewing machine, an electric flat iron, type of bed, charcoal flat iron, a bed  
131 net, kerosene lamp, kerosene stove, car, tea table, refrigerator, television set, sound stereo,  
132 telephone, mattress, wheel barrow, cell phone and camera (Chronbach's alpha = 0.848).

133 Births were categorised as either single or multiple based on the number of infants born.  
134 Sex of the infant was categorised as male, female and unknown. Birth interval was defined as the  
135 time between the date of the latest birth and the date of the previous birth, categorised as  $\geq 33$   
136 months and  $< 33$  months, based on WHO recommendation of a minimum interval of two years  
137 between a birth and attempting next pregnancy. Previous adverse outcome was defined as the  
138 previous pregnancy resulting in a stillbirth or neonatal death. Age at childbirth was calculated  
139 from the dates of birth for the mother and the baby and categorised into 15-17, 18-34, and 35-49  
140 years. Parity was defined as the number of preceding pregnancies leading to a birth after 28

141 weeks of gestation and categorised as nulliparity, 1-4 births and grand multiparity ( $\geq 5$  births). In  
142 order to investigate whether the association between parity and stillbirth was influenced by  
143 maternal age at birth, the variables were combined and births were divided into categories: (1)  
144 nulliparous, 15-17 years old; (2) nulliparous, 18-34 years old; (3) parity 1-4, 15-17 years old; (4)  
145 parity 1-4, 18-34 years old; (5) parity 1-4, 35-49 years old; (6) parity  $\geq 5$ , 18-34 years old; (7)  
146 parity  $\geq 5$ , 35-49 years old.

147

#### 148 *Statistical analysis*

149 We first analysed stillbirth and neonatal mortality rates with chi-square statistics to  
150 examine the rates within different levels of the same potential risk factor without adjustment for  
151 covariates. Due to the relatively high number of missing values in household wealth ( $n = 13,745$ ;  
152 40%), we included births with a missing value as a separate group in chi-square analysis. We  
153 conducted a univariate logistic regression on the variables that displayed a difference between the  
154 outcomes ( $p < 0.10$ ) and included the variables that showed an association in univariate logistic  
155 regression in the multivariate model. We constructed a multilevel logistic regression model with  
156 odds ratios (OR) and 95% confidence intervals (CI) to identify risk factors of stillbirth and  
157 neonatal deaths. The variables in this study were divided into socioeconomic and proximate  
158 based on the framework by Mosley and Chen developed to study child mortality in low-income  
159 countries<sup>31</sup>. We added socioeconomic variables (education, household wealth, marital status) into  
160 the model first and did a backward elimination of variables not reaching p-value of 0.10 or less  
161 before adding the proximate variables (age, parity, fetal sex, birth interval, single/multiple birth,  
162 previous adverse outcome) and doing another backward elimination. Year of birth was included  
163 as a potential confounder in order to control for higher mortality in earlier years. Adjusted odds  
164 ratios are only reported for the risk factors that remained significant in the multivariate analysis.  
165 We used chi-squares to investigate statistical significance of mortality decline and cubic B-  
166 splines to visualise mortality rates with three internal knots at 25<sup>th</sup>, 50<sup>th</sup> and 75<sup>th</sup> percentile for

167 variable year of birth. We obtained the annual decrease in mortality rates with a linear regression  
168 on yearly mortality rates that had been transformed into a natural log scale. All analyses were  
169 conducted with Stata version 13 (Stata Corporation, College Station, TX, USA).

170

### 171 *Ethical considerations*

172 The Higher Degrees, Research and Ethics Committee at Makerere University approved the data  
173 collection (ethical clearance: IRB0005876FWA, Protocol 073). Informed consent was obtained  
174 from participants in writing or with an inked thumbprint for illiterate individuals after explaining  
175 the study verbally and in writing.

176

### 177 **Results**

178 The survey intended to interview 16,410 women and 10,540 participated in the study. A large  
179 number of women (4,955 women) could not be reached as they were pursuing secondary or  
180 tertiary education outside the HDSS; another 889 women had outmigrated and 26 died between  
181 survey rounds.

182

### 183 *Characteristics of births*

184 All live births and stillbirths during the reproductive age range (15-49) were eligible for inclusion  
185 in the analysis (births with maternal age of under 15 were excluded, n = 1,233) . We excluded  
186 births from the analysis if information about the year of birth (n = 61) or birth outcome (n = 73)  
187 was missing. Births occurring before 1982 (n = 101) were excluded as the low number of  
188 observations would have made the mortality rate estimates unreliable. Of the 10,540 women  
189 surveyed, 6,962 women reported at least one pregnancy leading to a stillbirth or a live birth and  
190 were included in the analyses (Table 1). There were 34,073 reported births in total. Of all births,  
191 515 (1.5%) were reported to have resulted in stillbirth and 899 (2.6%) in neonatal death. The  
192 maternal characteristics for most births were primary school education (61.7%), currently married



193 (88.9%), maternal age 18-34 (80.5%; median 25 years, IQR: 20-30 years) and parity 1-4 (55.3%).  
 194 Of all infants that were born, 96.7% were singletons, 49.9% were female, 55.3% were linked to a  
 195 birth interval shorter than 33 months and 2.5% followed a previous birth that resulted in a  
 196 stillbirth or neonatal death.  
 197

**Table 1.** Characteristics of births at the Iganga-Mayuge Health and Demographic Surveillance Site (N = 34,073)

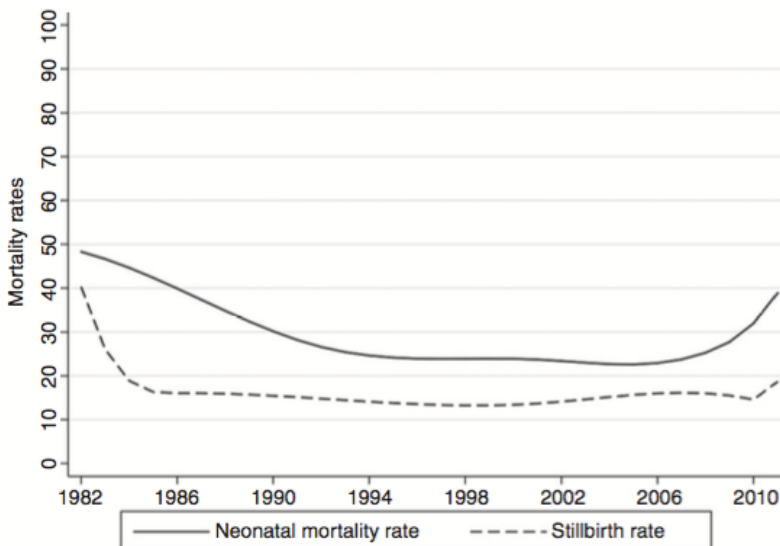
Item	n	%	
<b>Pregnancy outcome</b>	Stillbirth	515	1.5
	Neonatal death	899	2.6
	Live birth	32,659	95.9
<b>Year of pregnancy</b>	1982-1987	2,162	6.4
	1988-1993	4,421	13.0
	1994-1999	7,475	21.9
	2000-2005	9,312	27.3
	2006-2011	10,703	31.4
	Education	None	6,358
	Primary	21,013	61.7
	Secondary and above	6,702	19.7
Household wealth index quartiles	Lowest	3,578	10.5
	Second	5,467	16.0
	Third	6,292	18.5
	Highest	4,991	14.7
	Missing	13,745	40.3
Marital status	Single/divorced	3,741	11.0
	Married	30,300	88.9
	Missing	32	<0.1
Maternal age at childbirth	15-17	3,791	11.1
	18-34	27,438	80.5
	35-49	2,819	8.3
	Missing	25	<0.1
Birth type	Singleton	32,941	96.7
	Multiple	1,120	3.3
	Don't know	6	<0.1
	Missing	6	<0.1
Sex	Female	16,986	49.9
	Male	16,938	49.7
	Don't know	149	<0.5
Birth interval	<33 months	18,829	55.3
	≥33 months	8,029	23.6
Previous adverse outcome	Yes	855	2.5
	No	26,073	76.5
Parity	Nulliparity	6,962	20.4
	1-4 births	18,830	55.3
	Grand multiparity (≥5 births)	8,281	24.3

198

### 199 *Time trends in mortality rates*

200 The stillbirth rate and neonatal mortality rate displayed a slow decline (Figure 2). Stillbirths  
 201 decreased from 20/1,000 births in 1982-1987 (CI 14-26/1,000) to 16/1,000 in 2006-2011 (CI 14-  
 202 19/1,000) (p = 0.121) (Table S1). There was a statistically significant decline in neonatal deaths

203 (p < 0.001) from 42/1,000 live births in 1982-1987 (CI 22-50/1,000) to 29/1,000 in 2006-2011  
 204 (CI 26-32/1,000). The annual rate of change for neonatal mortality was 1.8% per year (p < 0.01),  
 205 while the stillbirth rate decreased by 0.9% per year (p = 0.19).  
 206



**Figure 2** Stillbirth rate (per 1000 total births) and neonatal mortality rate (per 1000 live births) in Iganga-Mayuge Health and Demographic Surveillance Site in rural eastern Uganda from 1982 to 2011.

207  
 208

**Table S1.** Stillbirth rate (per 1,000 births) and neonatal mortality rate (per 1,000 live births) in Iganga-Mayuge HDSS in 1982-2011 with 95% confidence intervals.

Year	Stillbirths (n)	All births (n)	Stillbirth rate	CI	Neonatal deaths (n)	Live births (n)	Neonatal mortality rate	CI
1982-1987	43	2,162	19.9	14.0-25.8	88	2,119	41.5	22.0-50.0
1988-1993	72	4,421	16.3	12.6-20.0	122	4,349	28.1	23.1-33.0
1994-1999	95	7,475	12.7	10.1-15.2	194	7,380	26.3	22.6-29.9
2000-2005	135	9,312	14.5	12.1-16.9	192	9,177	20.9	18.0-23.9
2006-2011	170	10,703	15.9	13.5-18.6	303	10,533	28.8	25.6-32.0

209

### 210 *Risk factors of stillbirth and neonatal death*

211 In the multivariate analysis multiple births carried a 3-fold risk of stillbirth (AOR 2.57, CI 1.66-  
 212 3.99) (Table 2) and 6-fold risk of neonatal death (AOR 6.16, CI 4.80-7.92) (Table 3) compared to  
 213 singleton births. The odds of stillbirth were 41% higher for males compared to females (AOR  
 214 1.41, CI 1.11-1.80), while male sex was linked to 37% higher odds of neonatal death (AOR 1.37,  
 215 CI 1.16-1.61). A birth interval of less than 33 months was linked to increased odds of stillbirth  
 216 (AOR 1.47, CI 1.09-1.98) and neonatal death (AOR 1.50, CI 1.23-1.84). If the previous

217 pregnancy had resulted in a stillbirth or neonatal death, the odds of stillbirth were six times the  
 218 odds for births not following a stillbirth or neonatal death (AOR 6.16, CI 4.26-8.88), while there  
 219 was a 4-fold increase in odds for neonatal death (AOR 4.15, CI 3.02-5.72). The combination of  
 220 advanced maternal age (35-49) and grand multiparity was linked with twice the odds of stillbirth  
 221 compared to age group 18-35 with a parity of 1-4 (AOR 1.97, CI 1.32-2.89). For neonatal deaths,  
 222 advanced maternal age was a risk factor for births linked to a parity of 1-4 (AOR 2.34, CI 1.28-  
 223 4.25) and grand multiparity (AOR 1.44, CI 1.09-1.90).

224

**Table 2.** Adjusted and unadjusted odds ratios for stillbirths according to year, socioeconomic and proximate characteristics (n = 34,073 births)

Independent variables	Stillbirths		All births		Stillbirths per 1,000 births	Unadjusted		Adjusted*		
	n	%	n	%		OR	CI (95%)	OR	CI (95%)	
<b>Pregnancy year</b>										
1982-1987	43	8	2,162	6	20	1		1		
1988-1993	72	14	4,421	13	16	0.82	0.55-1.23			
1994-1999	95	18	7,475	22	13	0.67	0.45-0.99	0.47	0.27-0.83	
2000-2005	135	26	9,312	27	15	0.78	0.54-1.14	0.54	0.31-0.94	
2006-2011	170	33	10,703	31	16	0.87	0.60-1.26			
<b>Socioeconomic variables</b>										
<b>Education</b>										
None	84	16	6,358	19	13	0.85	0.61-1.20			
Primary	331	64	21,013	62	16	1.07	0.83-1.39			
Secondary and above	100	19	6,702	20	15	1				
<b>Household wealth index quartile</b>										
Lowest	64	12	3,578	11	18	1.40	0.91-2.15			
Second	86	17	5,467	16	16	1.17	0.79-1.75			
Third	86	17	6,292	18	14	1.04	0.70-1.55			
Highest	63	12	4,991	15	13	1				
<b>Marital status</b>										
Single/divorced	71	14	3,741	11	19	1.35	1.00-1.82			
Married	442	86	30,300	89	15	1				
<b>Proximate variables</b>										
<b>Type of pregnancy</b>										
Single	462	90	32,941	97	14	1		1		
Multiple	49	10	1,120	3	44	3.36	2.37-4.75	2.57	1.66-3.99	
<b>Sex of the baby</b>										
Female	182	35	16,986	50	11	1		1		
Male	220	43	16,938	50	13	1.25	1.01-1.53	1.41	1.11-1.80	
<b>Birth interval</b>										
≥33 months	96	19	8,029	24	12	1		1		
<33 months	299	58	18,829	55	16	1.35	1.06-1.71	1.47	1.09-1.98	
<b>Previous adverse outcome</b>										
No	300	58	25,773	76	12	1		1		
Yes	132	26	855	3	154	6.85	5.06-9.27	6.16	4.26-8.88	
<b>Parity and age at birth</b>										
Nulliparous, 15-17 years old	36	7	2,872	8	13	1.15	0.80-1.67			
Nulliparous, 18-34 years old	45	9	4,085	12	11	0.94	0.67-1.32			
Parity 1-4, 15-17 years old	15	3	919	3	16	1.49	0.85-2.62			
Parity 1-4, 18-34 years old	197	38	17,539	51	11	1		1		
Parity 1-4, 35-49 years old	6	1	354	1	17	1.36	0.56-3.32			
Parity ≥ 5, 18-34 years old	152	30	5,814	17	26	2.47	1.97-3.11			
Parity ≥ 5, 35-49 years old	64	12	2,465	7	26	2.35	1.72-3.21	1.97	1.32-2.89	

\*In the adjusted model, variables were added group by group starting with socioeconomic variables. A backward elimination was performed on all variables not reaching the 0.05 significance level before proximate variables were added in the model. This was again followed by backward elimination. Finally, the year of pregnancy was added in the model. Again, a backward elimination was performed, resulting in the final model.

225

226

**Table 3.** Adjusted and unadjusted odds ratios for neonatal deaths according to year, socioeconomic and proximate characteristics (n = 33,558 births)

Independent variables	Neonatal deaths		All births		Neonatal deaths per 1,000 live births	Unadjusted		Adjusted*	
	n	%	n	%		OR	CI (95%)	OR	CI (95%)
<b>Pregnancy year</b>									
1982-1987	88	10	2,119	6	42	1		1	
1988-1993	122	14	4,349	13	28	0.65	0.48-0.87		
1994-1999	194	22	7,380	22	26	0.61	0.46-0.80	0.47	0.27-0.83
2000-2005	192	21	9,177	27	21	0.48	0.36-0.63	0.54	0.31-0.94
2006-2011	303	34	10,533	31	29	0.67	0.52-0.88		
<b>Socioeconomic variables</b>									
<b>Education</b>									
None	181	20	6,274	19	29	1.29	1.00-1.67		
Primary	562	63	20,682	62	27	1.17	0.95-1.43		
Secondary and above	156	17	6,602	20	24	1			
<b>Household wealth index quartile</b>									
Lowest	93	10	3,514	10	27	1.13	0.82-1.56		
Second	137	15	5,381	16	26	1.07	0.80-1.43		
Third	170	19	6,206	18	27	1.18	0.89-1.56		
Highest	121	13	4,928	15	25	1			
<b>Marital status</b>									
Single/divorced	107	12	3,670	11	29	1.12	0.88-1.42		
Married	792	88	29,858	89	27	1			
<b>Proximate variables</b>									
<b>Type of pregnancy</b>									
Single	757	84	32,479	97	23	1		1	
Multiple	142	16	1,071	3	133	7.64	6.05-9.63	6.16	4.80-7.92
<b>Sex of the baby</b>									
Female	385	43	16,804	50	23	1		1	
Male	502	56	16,718	50	30	1.32	1.15-1.52	1.37	1.16-1.61
<b>Birth interval</b>									
≥33 months	138	15	7,933	24	17	1		1	
<33 months	517	58	18,530	55	28	1.62	1.32-1.97	1.50	1.23-1.84
<b>Previous adverse outcome</b>									
No	560	62	25,773	77	22	1		1	
Yes	108	12	723	2	149	3.99	2.92-5.45	4.15	3.02-5.72
<b>Parity and age at birth</b>									
Nulliparous, 15-17 years old	101	11	2,836	8	36	1.69	1.34-2.13		
Nulliparous, 18-34 years old	116	13	4,040	12	29	1.30	1.05-1.62		
Parity 1-4, 15-17 years old	26	3	904	3	29	1.27	0.83-1.95		
Parity 1-4, 18-34 years old	390	43	17,342	52	23	1		1	
Parity 1-4, 35-49 years old	15	2	348	1	43	2.16	1.22-3.83	2.34	1.28-4.25
Parity ≥ 5, 18-34 years old	169	19	5,662	17	30	1.28	1.06-1.56		
Parity ≥ 5, 35-49 years old	82	9	2,401	7	34	1.57	1.21-2.03	1.44	1.09-1.90

\*In the adjusted model, variables were added group by group starting with socioeconomic variables. A backward elimination was performed on all variables not reaching the 0.05 significance level before proximate variables were added in the model. This was again followed by backward elimination. Finally, the year of pregnancy was added in the model. Again, a backward elimination was performed, resulting in the final model.

227

228

## 229 Discussion

230

231 During 1982-2011, neonatal mortality rate decreased by 1.8% and stillbirth rate by 0.9% per year.

232 The odds of stillbirth and neonatal death were higher with a multiple pregnancy, male infant,

233 short birth interval and previous adverse outcome. Neonatal deaths were linked to advanced  
234 maternal age and stillbirths were linked to grand multiparity during advanced maternal age. We  
235 detected no association with socioeconomic variables.

236 Earlier studies have reported a similar risk from multiple births<sup>20,32,33</sup> and male fetal  
237 sex<sup>12,20,34</sup>. Male sex is a risk factor for neonatal deaths<sup>35,36</sup> and it has been suggested that male  
238 fetuses are also more vulnerable to stressors in utero<sup>12</sup>. The association between neonatal deaths  
239 and birth intervals shorter than 33 months has been reported in earlier studies<sup>37</sup>. However, few  
240 studies have investigated birth intervals and stillbirths exclusively. Our findings are similar to the  
241 two studies we were able to identify, which reported an association between risk of stillbirth and  
242 birth intervals of less than 21 months<sup>38</sup> and less than 35 months<sup>39</sup>. The association in this study  
243 was controlled for previous stillbirth, suggesting that the association is not only linked to  
244 maternal characteristics that may result in consecutive stillbirths. The underlying mechanism of  
245 action is unclear, but it may be linked to depletion of reproductive and nutritional resources due  
246 to physical strain from short birth intervals<sup>37,40,41</sup>.

247 The odds of stillbirth and neonatal death were higher if the previous pregnancy ended in an  
248 adverse outcome, consistent with previous studies<sup>20,32,39,42–46</sup>. A recent meta-analysis on studies  
249 conducted in high-income countries reported an increased risk of subsequent stillbirth if the  
250 initial pregnancy resulted in stillbirth, but pointed out that the association is less clear when the  
251 initial stillbirth is unexplained<sup>47</sup>. In addition to being physiological, the association may also be a  
252 proxy for either environmental or socioeconomic factors that have not been fully accounted for.

253 Nulliparity or grand multiparity alone were not associated with stillbirths in this study, in  
254 line with findings from Bangladesh<sup>43</sup> and Egypt<sup>48</sup>, but in contrast with other studies<sup>7,11,19,46,49</sup>.  
255 However, the odds of stillbirth were higher for grand multiparous women with advanced  
256 maternal age, similar to findings from other studies<sup>10,11,20,24</sup>. Advanced maternal age is a well-  
257 established risk factor for stillbirths<sup>10,11</sup> and it is linked with a higher prevalence of chronic  
258 hypertension and placental pathologies<sup>50</sup>. Advanced maternal age was a risk factor for neonatal

259 deaths regardless of parity, consistent with some previous findings<sup>32,51–53</sup> but in contrast to  
260 several others<sup>14,21,36,54,55</sup>. The association may be due to age-related birth complications resulting  
261 in early neonatal deaths, or less health-seeking behaviour and more observance of potentially  
262 harmful traditions among older generations.

263 While many studies have linked socioeconomic status with stillbirths and neonatal  
264 mortality<sup>13,36,46,51,56–59</sup>, our findings mirror several other studies that did not find an association  
265 with education<sup>19,20,24,32,43,48,49,60</sup>, household wealth<sup>19,24,56,60</sup> or marital status<sup>10,24,60</sup>. Socioeconomic  
266 factors may have less influence in rural areas, where wealthier and more educated women still  
267 face inadequate quality and availability of health services. Moreover, survival around the time of  
268 birth is reliant on the availability of medical interventions such as induction and surveillance of  
269 labour, assisted vaginal delivery and caesarean section. The findings of this study may be  
270 generalisable to women aged 15-49 living in other rural areas in Sub-Saharan Africa, as the  
271 socioeconomic and biological risk profile is similar to many other low-resource settings. In urban  
272 areas, where there is generally more accessible and better quality health care, socioeconomic  
273 factors might exert a larger influence.

274 To the best of our knowledge, this is one of the first population-based studies that examined  
275 time trends and risk factors of stillbirths in sub-Saharan Africa. This study is also among the first  
276 studies that use complete pregnancy histories rather than birth histories. The annual rates of  
277 change obtained through this method are similar to global estimates overlapping the time period  
278 in this paper: 0.9% for stillbirths compared to a global estimate of 1.1% for 1995-2009<sup>61</sup>, and  
279 1.8% for neonatal mortality compared to 2% globally for 1990-2012<sup>6</sup>, indicating that pregnancy  
280 histories are a relatively reliable data collection method. The use of pregnancy histories is in line  
281 with the Every Newborn Action Plan, which advocates for more comprehensive pregnancy and  
282 newborn data collection in communities while routine data collection systems are being  
283 strengthened<sup>25</sup>.

284 This study has some limitations. Education level, marital status and household wealth  
285 reflect the situation at the time of the survey. This may have resulted in some pregnancies to be  
286 linked to incorrect socioeconomic variables and attenuated the associations, even though very  
287 similar results were obtained when the analysis was restricted to births during 2006-2011 (data  
288 not shown). Up to 40% of births were to households that did not have household wealth status,  
289 probably due to missing asset data from the earlier survey. Moreover, the population in the area is  
290 relatively homogenous, which may have diluted the associations. We missed 4,955 women for  
291 interview who were schooling outside the study area and could not be reached for interview; most  
292 of them in the age bracket 15-17 years. However, few births are likely to have been missed  
293 because of this due to the prevailing practice of schools expelling pregnant girls.

294 Residual confounding is most likely present due to lack of information on antenatal care  
295 attendance, place of delivery, maternal conditions and pregnancy complications. We did not have  
296 information on pregnancies linked to maternal deaths. Pregnancies with advanced maternal age  
297 are underrepresented in earlier years due to the retrospective nature of the survey. These factors  
298 may have resulted in underestimated mortality rates. The apparent rise in mortality rates over the  
299 more recent years may reflect recall bias, with women more likely to report more recent  
300 stillbirths and neonatal deaths. Relying on mothers' recollection of the month and year of  
301 termination of pregnancy or neonatal death is also subject to recall bias, which may have led to a  
302 non-differential misclassification between miscarriages, stillbirths and neonatal deaths.

303 The stillbirth rate/neonatal mortality rate ratio was 0.58 in this study, which is in line with  
304 population-based retrospective surveys (mean ratio 0.6), but lower than high-quality civil  
305 registration and vital statistics data (mean ratio 1.03)<sup>5</sup>. However, in the absence of high quality  
306 facility-level data, pregnancy history surveys offer a viable option in resource-poor settings  
307 compared to more costly routine surveillance.

308 The apparent slow rate of decline for both neonatal mortality and stillbirths, lack of  
309 association with education and household wealth and the existence of easily identifiable risk

310 factors call for a rethinking on how to address obstetric risks. The risk approach in antenatal care  
311 was criticised in the early 2000s and replaced by the statement that every pregnancy is at risk<sup>63</sup>.  
312 In response, all mothers are today advised to deliver with a skilled attendant and in a facility.  
313 However, our study indicates that multiple pregnancies and pregnancies linked to previous birth  
314 complications, grand multiparity and advanced maternal age bear a much greater risk for the  
315 baby. A re-positioning of the risk approach with the aim to refer higher risk pregnancies to fully  
316 equipped hospitals should be considered. In high income settings around 60% of multiple  
317 pregnancies are delivered by Caesarean section<sup>64</sup> while in low-income settings this rate remains  
318 below 40% at hospital-level<sup>65</sup>. The re-vitalisation of family planning programmes after a decade  
319 of neglect will hopefully also contribute to a decrease of unwanted pregnancies that pose higher  
320 risks for the neonate.

321

## 322 **Conclusion**

323 This is one of the first population-based studies from Sub-Saharan Africa that investigated trends  
324 and risk factors of pregnancy outcomes by using a pregnancy history survey. Based on  
325 modelling, the data compared favourably to international estimates. In light of the findings, we  
326 encourage improved access and quality of care at birth, an increased focus in targeting high-risk  
327 pregnancies during antenatal care and further validation of pregnancy history data.

328

## 329 **Acknowledgements**

330 We thank the staff, researches and data collectors at Iganga-Mayuge Demographic Surveillance  
331 Site who were involved in the conception, data collection and management of the study. The site  
332 received co-funding from Sida and we are grateful for this support. The INDEPTH Network also  
333 supports the HDSS. We also thank the Saving Newborn Lives team of Save the Children,  
334 members of the UNEST study technical advisory and data safety and monitoring boards.

335



336

337 **Disclosure of Interests**

338 The authors declare no conflicts of interest.

339

340 **Contribution to Authorship**

341 SK with support from CH and PW conceptualised the study, wrote the initial and the final paper  
342 draft and conducted all statistical analyses. DK, JA and GP participated in the initial study design,  
343 data collection and management and reviewed and provided input to the final draft. All authors  
344 read and approved the final manuscript.

345

346 **Details of Ethics Approval**

347 The study received ethics approval from the Higher Degrees, Research and Ethics Committee at  
348 Makerere University on 15 February 2011 with the reference IRB00011353, Protocol (121).

349

350 **Funding**

351 None.

352

353 **References**

- 354 1. Victora CG, Requejo JH, Barros AJD, Berman P, Bhutta Z, Boerma T, et al.  
355 Countdown to 2015: a decade of tracking progress for maternal, newborn, and child survival.  
356 Lancet. 2015 Oct;  
357 2. Levels & trends in child mortality 2015. New York: UNICEF, World Health  
358 Organization, World Bank Group, United Nations; 2015.  
359 3. Lawn JE, Blencowe H, Pattinson R, Cousens S, Kumar R, Ibiebele I, et al.  
360 Stillbirths: Where? When? Why? How to make the data count? Lancet. 2011  
361 Apr;377(9775):1448–63.  
362 4. Lawn JE, Cousens S, Zupan J. 4 million neonatal deaths: When? Where? Why?  
363 Lancet. 2005 Mar 11;365(9462):891–900.  
364 5. Blencowe H, Cousens S, Jassir FB, Say L, Chou D, Mathers C, et al. National,  
365 regional, and worldwide estimates of stillbirth rates in 2015, with trends from 2000: a systematic  
366 analysis. Lancet Glob Health [Internet]. 2016 Jan [cited 2016 Jan 20]; Available from:  
367 <http://linkinghub.elsevier.com/retrieve/pii/S2214109X15002752>

- 368 6. Lawn JE, Kinney MV, Black RE, Pitt C, Cousens S, Kerber K, et al. Newborn  
369 survival: a multi-country analysis of a decade of change. *Health Policy Plan.* 2012;27(suppl  
370 3):iii6–28.
- 371 7. Asiki G, Baisley K, Newton R, Marions L, Seeley J, Kamali A, et al. Adverse  
372 pregnancy outcomes in rural Uganda (1996–2013): trends and associated factors from serial cross  
373 sectional surveys. *BMC Pregnancy Childbirth.* 2015 Oct 29;15(1):279.
- 374 8. McClure EM, Saleem S, Pasha O, Goldenberg RL. Stillbirth in developing  
375 countries: a review of causes, risk factors and prevention strategies. *J Matern Fetal Neonatal*  
376 *Med.* 2009 Jan 1;22(3):183–90.
- 377 9. Allanson ER, Muller M, Pattinson RC. Causes of perinatal mortality and associated  
378 maternal complications in a South African province: challenges in predicting poor outcomes.  
379 *BMC Pregnancy Childbirth.* 2015 Feb 15;15(1):37.
- 380 10. Aminu M, Unkels R, Mdegela M, Utz B, Adaji S, van den Broek N. Causes of and  
381 factors associated with stillbirth in low- and middle-income countries: a systematic literature  
382 review. *BJOG Int J Obstet Gynaecol.* 2014 Sep 1;121:141–53.
- 383 11. McClure EM, Pasha O, Goudar SS, Chomba E, Garces A, Tshefu A, et al.  
384 Epidemiology of stillbirth in low-middle income countries: A Global Network Study. *Acta*  
385 *Obstet Gynecol Scand.* 2011;90(12):1379–85.
- 386 12. Mondal D, Galloway TS, Bailey TC, Mathews F. Elevated risk of stillbirth in  
387 males: systematic review and meta-analysis of more than 30 million births. *BMC Med.* 2014 Nov  
388 27;12(1):220.
- 389 13. Andargie G, Berhane Y, Worku A, Kebede Y. Predictors of perinatal mortality in  
390 rural population of Northwest Ethiopia: a prospective longitudinal study. *BMC Public Health.*  
391 2013;13(1):168.
- 392 14. Debelew GT, Afework MF, Yalew AW. Determinants and Causes of Neonatal  
393 Mortality in Jimma Zone, Southwest Ethiopia: A Multilevel Analysis of Prospective Follow Up  
394 Study. *PLoS ONE.* 2014 Sep 18;9(9):e107184.
- 395 15. Gizaw M, Molla M, Mekonnen W. Trends and risk factors for neonatal mortality in  
396 Butajira District, South Central Ethiopia, (1987-2008): a prospective cohort study. *BMC*  
397 *Pregnancy Childbirth.* 2014 Feb 11;14(1):64.
- 398 16. Yaya Y, Eide KT, Norheim OF, Lindtjørn B. Maternal and Neonatal Mortality in  
399 South-West Ethiopia: Estimates and Socio-Economic Inequality. *PLoS ONE.* 2014 Apr  
400 30;9(4):e96294.
- 401 17. Bekana Kebede, Abebaw Gebeyehu, Sharma HR, Sisay Yifru. Prevalence and  
402 associated factors of neonatal mortality in North Gondar Zone, Northwest Ethiopia. *Ethiop J*  
403 *Health Dev.* 2012;26(2):66–71.
- 404 18. Mekonnen Y, Tensou B, Telake DS, Degefie T, Bekele A. Neonatal mortality in  
405 Ethiopia: trends and determinants. *BMC Public Health.* 2013;13(1):483.
- 406 19. Engmann C, Walega P, Aborigo RA, Adongo P, Moyer CA, Lavasani L, et al.  
407 Stillbirths and early neonatal mortality in rural Northern Ghana. *Trop Med Int Health.* 2012 Mar  
408 1;17(3):272–82.
- 409 20. Ha YP, Hurt LS, Tawiah-Agyemang C, Kirkwood BR, Edmond KM. Effect of  
410 Socioeconomic Deprivation and Health Service Utilisation on Antepartum and Intrapartum  
411 Stillbirth: Population Cohort Study from Rural Ghana. *PLoS ONE.* 2012 Jul 13;7(7):e39050.
- 412 21. Kayode GA, Ansah E, Agyepong IA, Amoakoh-Coleman M, Grobbee DE,  
413 Klipstein-Grobusch K. Individual and community determinants of neonatal mortality in Ghana: a  
414 multilevel analysis. *BMC Pregnancy Childbirth.* 2014 May 12;14(1):165.
- 415 22. Baiden F, Hodgson A, Adjuik M, Adongo P, Ayaga B, Binka F. Trend and causes  
416 of neonatal mortality in the Kassena–Nankana district of northern Ghana, 1995–2002. *Trop Med*  
417 *Int Health.* 2006 Apr 1;11(4):532–9.

- 418 23. Montagu D, Yamey G, Visconti A, Harding A, Yoong J. Where Do Poor Women in  
419 Developing Countries Give Birth? A Multi-Country Analysis of Demographic and Health Survey  
420 Data. *PLoS ONE*. 2011 Feb 28;6(2):e17155.
- 421 24. Nankabirwa V, Tumwine JK, Tylleskär T, Nankunda J, Sommerfelt H, Consortium  
422 PER, et al. Perinatal mortality in eastern Uganda: a community based prospective cohort study.  
423 *PLoS One*. 2011;6(5):e19674.
- 424 25. WHO, UNICEF. Every newborn: an action plan to end preventable deaths. Geneva:  
425 World Health Organization; 2014.
- 426 26. Lawn JE, Blencowe H, Oza S, You D, Lee AC, Waiswa P, et al. Every Newborn:  
427 progress, priorities, and potential beyond survival. *Lancet*. 2014 Jul 18;384(9938):189–205.
- 428 27. Waiswa P, Pariyo G, Kallander K, Akuze J, Namazzi G, Ekirapa-Kiracho E, et al.  
429 Effect of the Uganda Newborn Study on care-seeking and care practices: a cluster-randomised  
430 controlled trial. *Glob Health Action*. 2015 Mar 31;8:5–15.
- 431 28. World Health Organization. International statistical classification of diseases and  
432 related health problems. Vol. 1. Geneva: World Health Organization; 2004.
- 433 29. Waiswa P, Peterson S, Tomson G, Pariyo GW. Poor newborn care practices-a  
434 population based survey in eastern Uganda. *BMC Pregnancy Childbirth*. 2010;10(1):9.
- 435 30. Filmer D, Pritchett LH. Estimating wealth effects without expenditure data—or  
436 tears: An application to educational enrollments in states of india\*. *Demography*.  
437 2001;38(1):115–32.
- 438 31. Mosley WH, Chen LC. An Analytical Framework for the Study of Child Survival in  
439 Developing Countries. *Popul Dev Rev*. 1984 Jan 1;10:25–45.
- 440 32. Ibrahim S a., Babiker AG, Amin I k., Omer M i. a., Rushwan H. Factors associated  
441 with high risk of perinatal and neonatal mortality: an interim report on a prospective community-  
442 based study in rural Sudan. *Paediatr Perinat Epidemiol*. 1994 Apr 1;8(2):193–204.
- 443 33. Marete I, Tenge C, Pasha O, Goudar S, Chomba E, Patel A, et al. Perinatal  
444 Outcomes of Multiple-Gestation Pregnancies in Kenya, Zambia, Pakistan, India, Guatemala, and  
445 Argentina: A Global Network Study. *Am J Perinatol*. 2013 Mar 19;31(02):125–32.
- 446 34. de Lima Trindade L, Amestoy SC, Picolo D, Falchetti G, Milbrath VM. Fatores de  
447 risco para morte fetal no município de Pato Branco (Brasil). Risk factors for fetal death in the city  
448 of Pato Branco (Brazil). *Investig Educ En Enferm*. 2011;29(3):451–8.
- 449 35. Ezeh OK, Agho KE, Dibley MJ, Hall J, Page AN. Determinants of neonatal  
450 mortality in Nigeria: evidence from the 2008 demographic and health survey. *BMC Public  
451 Health*. 2014;14(1):521.
- 452 36. Selemani M, Mwanyangala MA, Mrema S, Shamte A, Kajungu D, Mkopi A, et al.  
453 The effect of mother’s age and other related factors on neonatal survival associated with first and  
454 second birth in rural, Tanzania: evidence from Ifakara health and demographic surveillance  
455 system in rural Tanzania. *BMC Pregnancy Childbirth*. 2014;14(1):240.
- 456 37. Rutstein SO. Effects of preceding birth intervals on neonatal, infant and under-five  
457 years mortality and nutritional status in developing countries: evidence from the demographic  
458 and health surveys. *Int J Gynecol Obstet*. 2005;89:S7–24.
- 459 38. de Jonge H, Azad K, Seward N, Kuddus A, Shaha S, Beard J, et al. Determinants  
460 and consequences of short birth interval in rural Bangladesh: a cross-sectional study. *BMC  
461 Pregnancy Childbirth*. 2014;14(1):1–7.
- 462 39. Williams EK, Hossain MB, Sharma RK, Kumar V, Pandey CM, Baqui AH. Birth  
463 Interval and Risk of Stillbirth or Neonatal Death: Findings from Rural North India. *J Trop  
464 Pediatr*. 2008 Oct 1;54(5):321–7.
- 465 40. DaVanzo J, Hale L, Razzaque A, Rahman M. The effects of pregnancy spacing on  
466 infant and child mortality in Matlab, Bangladesh: how they vary by the type of pregnancy  
467 outcome that began the interval. *Popul Stud*. 2008;62(2):131–54.

- 468 41. Pebley AR, Stupp PW. Reproductive patterns and child mortality in Guatemala.  
469 Demography. 1987;24(1):43–60.
- 470 42. Aquino MMA de, Cecatti JG, Mariani Neto C. Risk factors associated to fetal  
471 death. Sao Paulo Med J. 1998 Nov;116(6):1852–7.
- 472 43. Mostafa G, Wojtyniak B, Fauveau V, Bhuiyan A. The relationship between  
473 sociodemographic variables and pregnancy loss in a rural area of Bangladesh. J Biosoc Sci.  
474 1991;23(01):55–63.
- 475 44. Stringer EM, Vwalika B, Killam WP, Giganti MJ, Mbewe R, Chi BH, et al.  
476 Determinants of stillbirth in Zambia. Obstet Gynecol. 2011;117(5):1151–9.
- 477 45. Yatch NJ, Funkhouser E, Ehiri JE, Agbenyega T, Stiles JK, Rayner JC, et al.  
478 Malaria, intestinal helminths and other risk factors for stillbirth in Ghana. Infect Dis Obstet  
479 Gynecol. 2010;2010.
- 480 46. Kc A, Nelin V, Wrammert J, Ewald U, Vitrakoti R, Baral GN, et al. Risk factors for  
481 antepartum stillbirth: a case-control study in Nepal. BMC Pregnancy Childbirth. 2015 Jul  
482 5;15(1):146.
- 483 47. Lamont K, Scott NW, Jones GT, Bhattacharya S. Risk of recurrent stillbirth:  
484 systematic review and meta-analysis. The BMJ. 2015 Jun 24;350:h3080.
- 485 48. Mokhtar MM, Abdel-Fattah MM. Consanguinity and advanced maternal age as risk  
486 factors for reproductive losses in Alexandria, Egypt. Eur J Epidemiol. 2001 Jun;17(6):559–65.
- 487 49. Lee AC, Mullany LC, Tielsch JM, Katz J, Khatry SK, LeClerq SC, et al.  
488 Community-based stillbirth rates and risk factors in rural Sarlahi, Nepal. Int J Gynecol Obstet.  
489 2011 Jun;113(3):199–204.
- 490 50. Smith R, Maiti K, Aitken RJ. Unexplained antepartum stillbirth: A consequence of  
491 placental aging? Placenta. 2013 Apr 1;34(4):310–3.
- 492 51. Bashir AO, Ibrahim GH, Bashier IA, Adam I. Neonatal mortality in Sudan: analysis  
493 of the Sudan household survey, 2010. BMC Public Health. 2013;13(1):287.
- 494 52. Cleary-Goldman J, Malone FD, Vidaver J, Ball RH, Nyberg DA, Comstock CH, et  
495 al. Impact of maternal age on obstetric outcome. Obstet Gynecol. 2005;105(5, Part 1):983–90.
- 496 53. Mavalankar DV, Trivedi CR, Gray RH. Levels and risk factors for perinatal  
497 mortality in Ahmedabad, India. Bull World Health Organ. 1991;69(4):435–42.
- 498 54. Ali AAA, Elgessim ME, Taha E, Adam GK. Factors Associated with Perinatal  
499 Mortality in Kassala, Eastern Sudan: A Community-Based Study 2010–2011. J Trop Pediatr.  
500 2014 Feb 1;60(1):79–82.
- 501 55. Akinyemi JO, Bamgboye EA, Ayeni O. Trends in neonatal mortality in Nigeria and  
502 effects of bio-demographic and maternal characteristics. BMC Pediatr. 2015 Apr 9;15(1):36.
- 503 56. Ronsmans C, Chowdhury ME, Alam N, Koblinsky M, Arifeen SE. Trends in  
504 stillbirths, early and late neonatal mortality in rural Bangladesh: the role of public health  
505 interventions. Paediatr Perinat Epidemiol. 2008 May 1;22(3):269–79.
- 506 57. Titaley C, Dibley M, Agho K, Roberts C, Hall J. Determinants of neonatal mortality  
507 in Indonesia. BMC Public Health. 2008;8(1):232.
- 508 58. Arokiasamy P, Gautam A. Neonatal mortality in the empowered action group states  
509 of India: trends and determinants. J Biosoc Sci. 2008;40(02):183–201.
- 510 59. Singh A, Kumar A, Kumar A. Determinants of neonatal mortality in rural India,  
511 2007–2008. PeerJ. 2013;1:e75.
- 512 60. Ajaari J, Masanja H, Weiner R, Abokyi SA, Owusu-Agyei S. Impact of place of  
513 delivery on neonatal mortality in rural Tanzania. Int J MCH AIDS. 2012;1(1):49–59.
- 514 61. Cousens S, Blencowe H, Stanton C, Chou D, Ahmed S, Steinhardt L, et al.  
515 National, regional, and worldwide estimates of stillbirth rates in 2009 with trends since 1995: a  
516 systematic analysis. Lancet. 2011;377(9774):1319–30.
- 517 62. Haws RA, Mashasi I, Mrisho M, Schellenberg JA, Darmstadt GL, Winch PJ.  
518 “These are not good things for other people to know”: How rural Tanzanian women’s

519 experiences of pregnancy loss and early neonatal death may impact survey data quality. Soc Sci  
520 Med. 2010;71(10):1764–72.

521 63. Abou-Zahr CL, WHO, UNICEF, editors. Antenatal care in developing countries:  
522 promises, achievements and missed opportunities ; an analysis of trends, levels and differentials,  
523 1990-2001. Geneva: World Health Organization; 2003. 32 p.

524 64. Robson M, Hartigan L, Murphy M. Methods of achieving and maintaining an  
525 appropriate caesarean section rate. Best Pract Res Clin Obstet Gynaecol. 2013 Apr 1;27(2):297–  
526 308.

527 65. Vogel JP, Betrán AP, Vindevoghel N, Souza JP, Torloni MR, Zhang J, et al. Use of  
528 the Robson classification to assess caesarean section trends in 21 countries: a secondary analysis  
529 of two WHO multicountry surveys. Lancet Glob Health. 2015 May;3(5):e260–70.

530