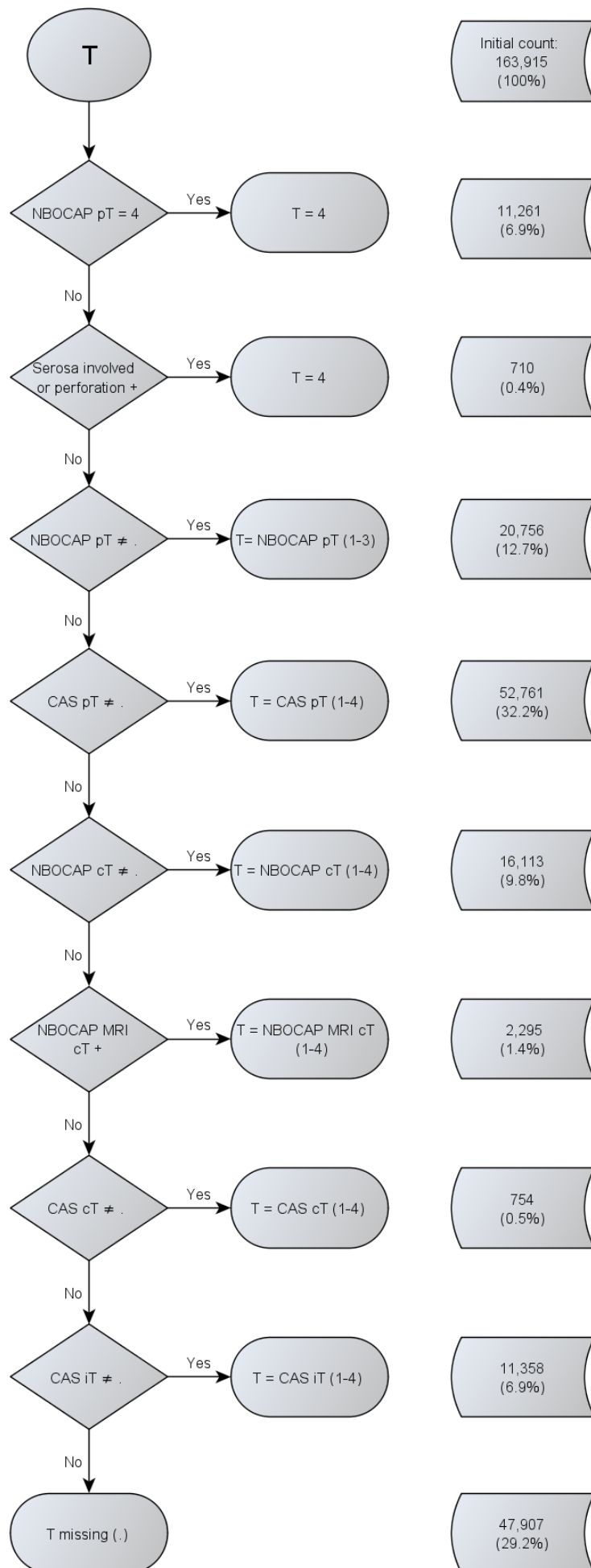


# Supplementary Web-Appendix

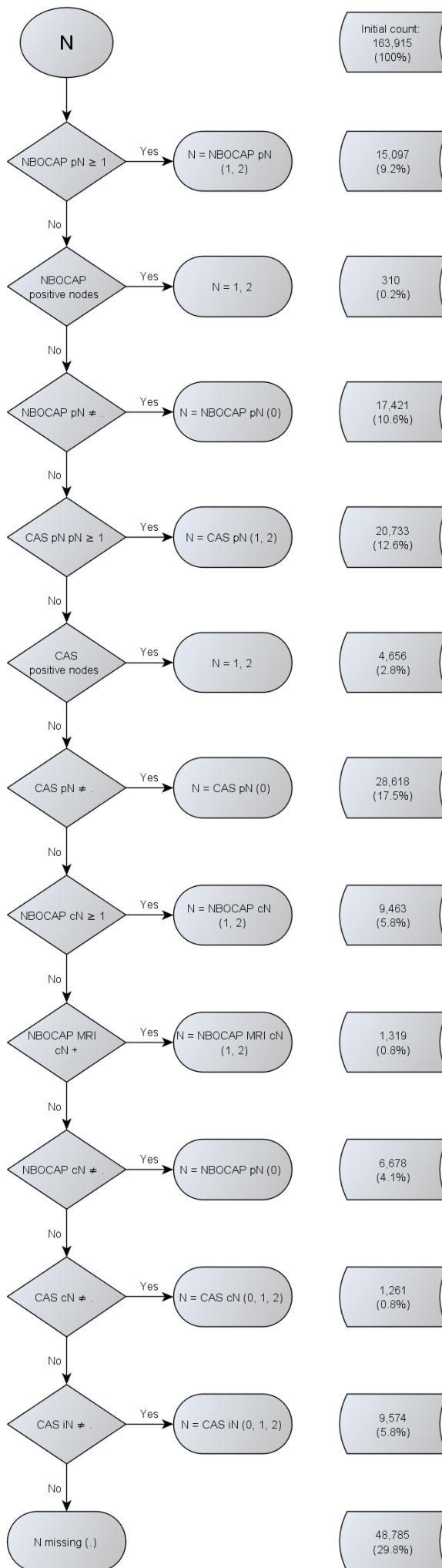
## Contents

Web-Appendix Figure 1. Deriving T component of TNM stage for colorectal cancer, England, 2008-2012.....	2
Web-Appendix Figure 2. Deriving N component of TNM stage for colorectal cancer, England, 2008-2012.....	3
Web-Appendix Figure 3. Deriving M component of TNM stage for colorectal cancer, England, 2008-2012. ....	4
Web-Appendix Figure 4. Deriving TNM stage for lung cancer using the restrictive strategy, England, 2008-2012. ....	5
Web-Appendix Figure 5. Deriving TNM stage for lung cancer using the non-restrictive strategy, England, 2008-2012....	6
Web-Appendix Figure 6. Deriving T component of TNM stage for lung cancer, England, 2008-2012.....	7
Web-Appendix Figure 7. Deriving N component of TNM stage for lung cancer, England, 2008-2012. ....	8
Web-Appendix Figure 8. Deriving M component of TNM stage for lung cancer, England, 2008-2012. ....	9
Web-Appendix Figure 9. Age standardised net survival by TNM stage, England 2008-2012 .....	10
Notes:.....	10

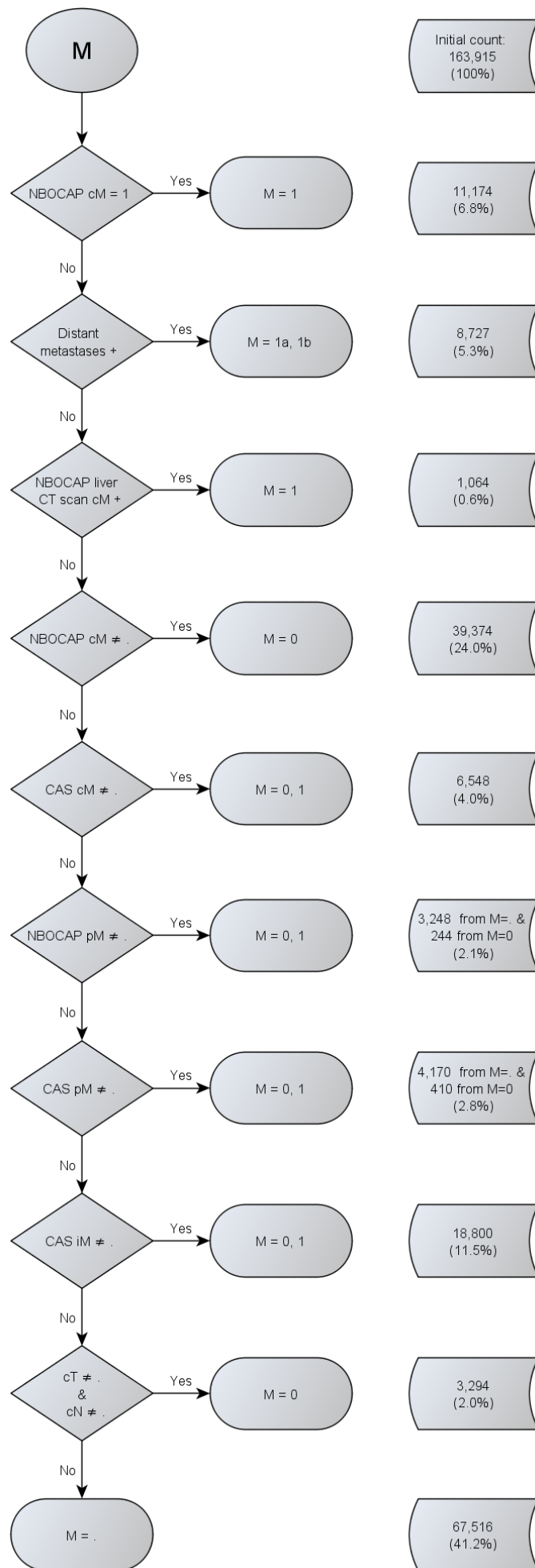
Web-Appendix Figure 1. Deriving T component of TNM stage for colorectal cancer, England, 2008-2012.



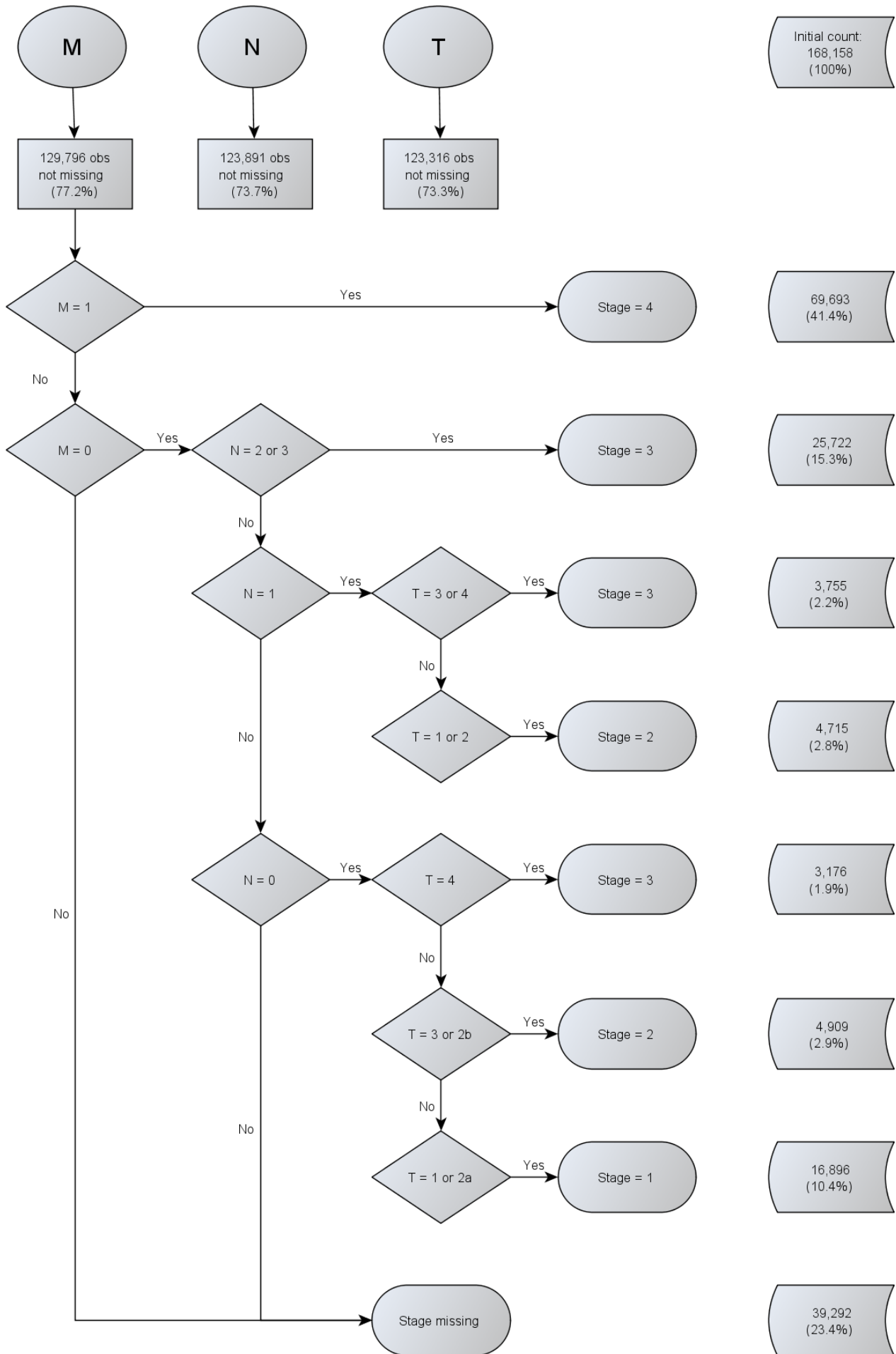
Web-Appendix Figure 2. Deriving N component of TNM stage for colorectal cancer, England, 2008-2012.



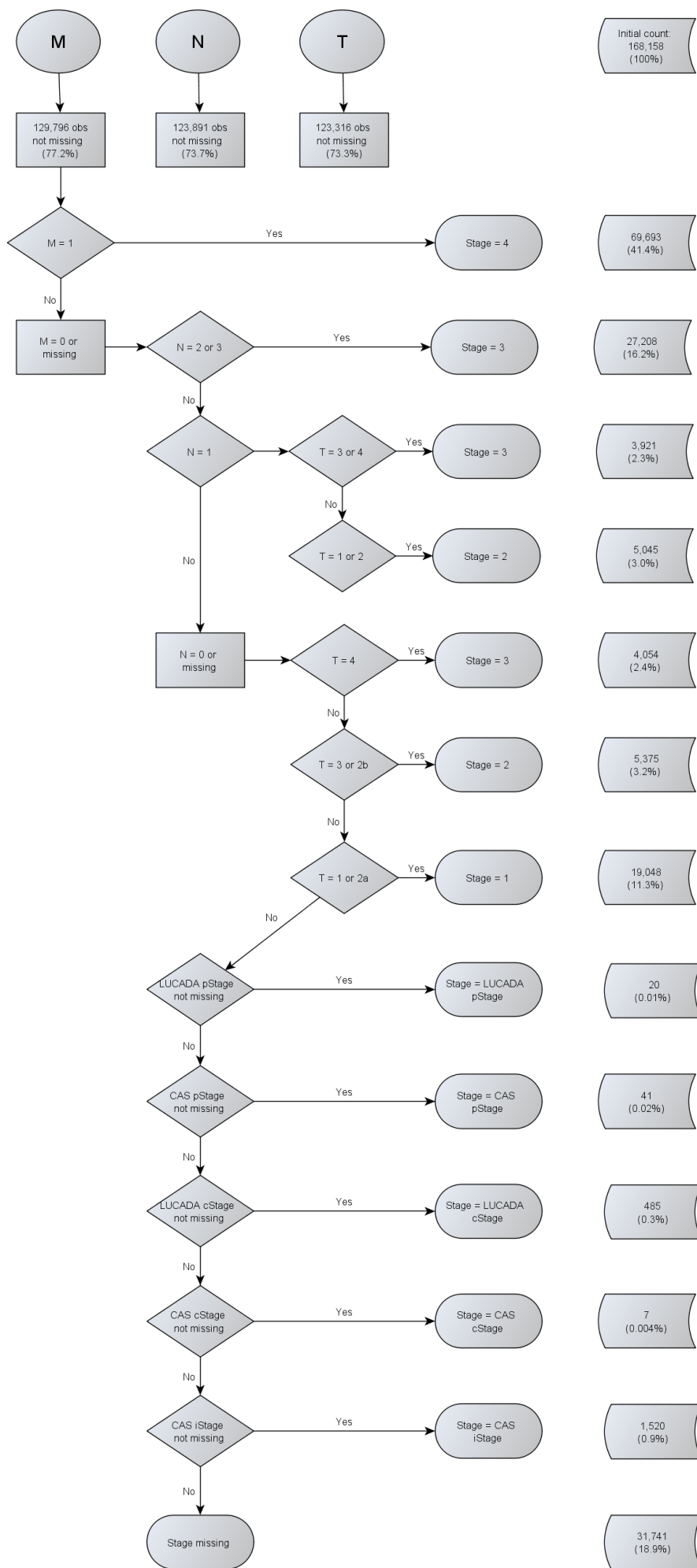
Web-Appendix Figure 3. Deriving M component of TNM stage for colorectal cancer, England, 2008-2012.



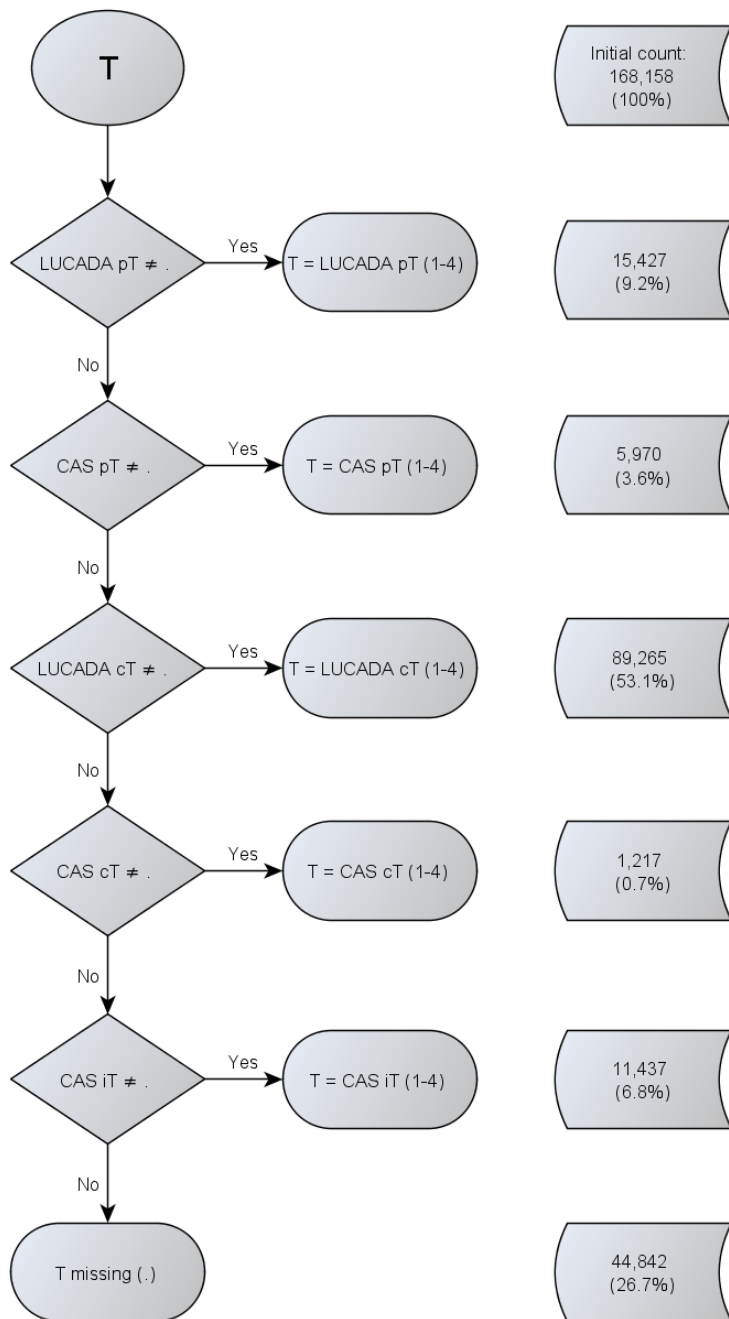
Web-Appendix Figure 4. Deriving TNM stage for lung cancer using the restrictive strategy, England, 2008-2012.



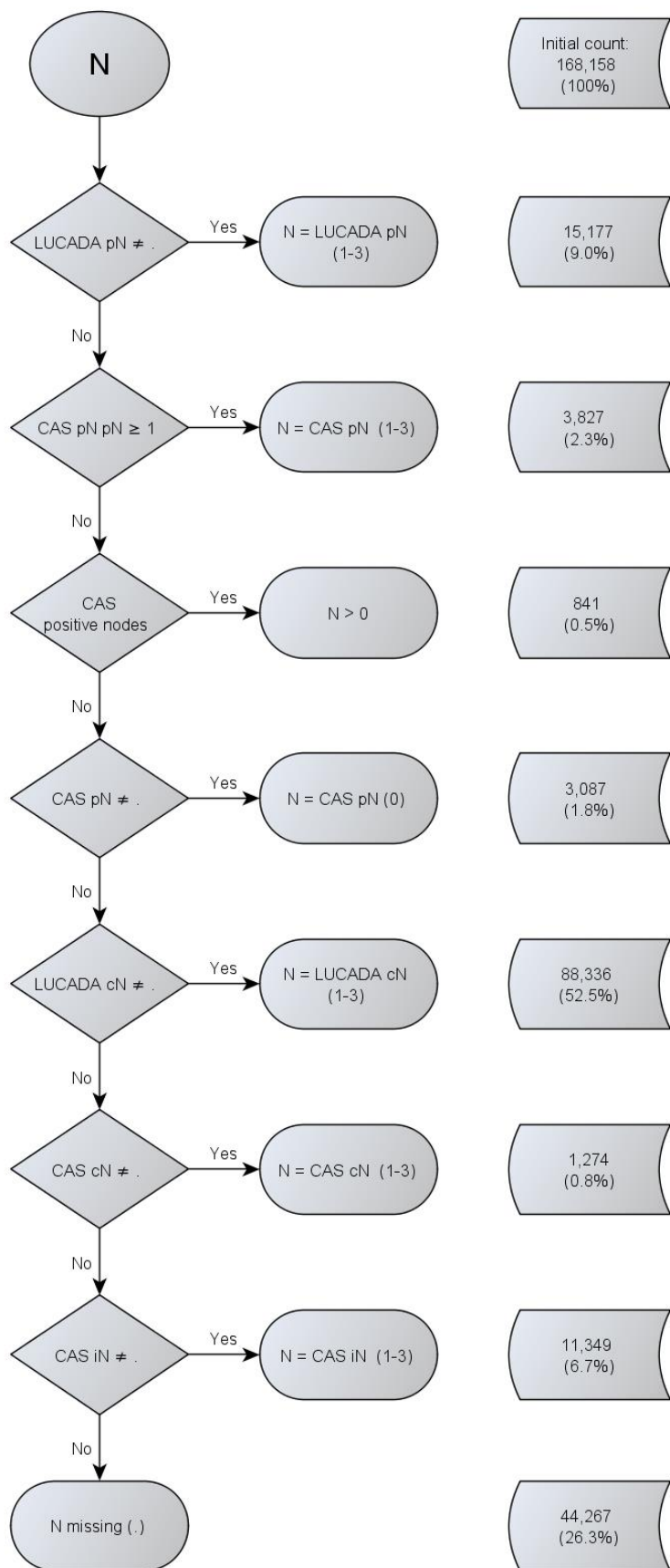
Web-Appendix Figure 5. Deriving TNM stage for lung cancer using the non-restrictive strategy, England, 2008-2012.



Web-Appendix Figure 6. Deriving T component of TNM stage for lung cancer, England, 2008-2012.

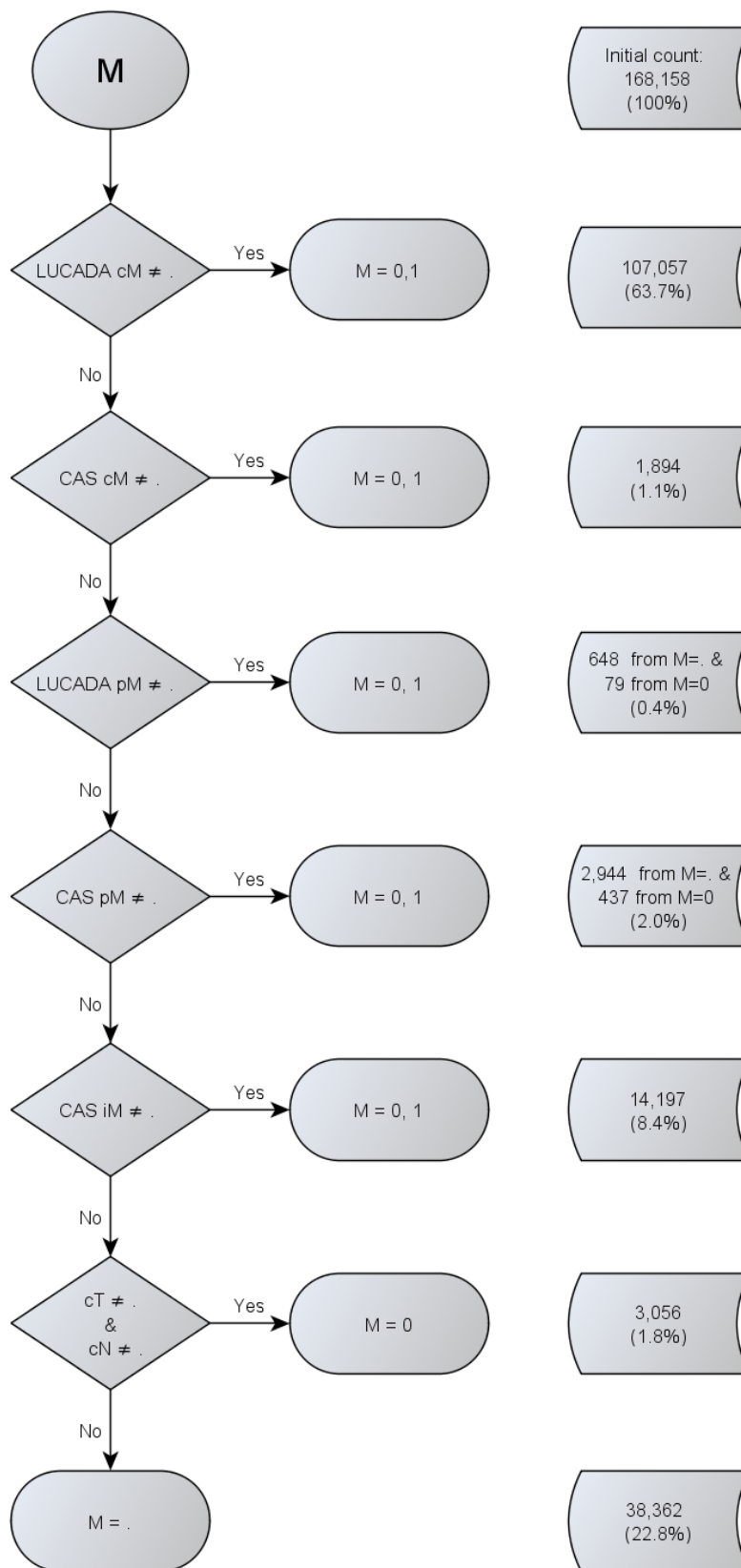


Web-Appendix Figure 7. Deriving N component of TNM stage for lung cancer, England, 2008-2012.

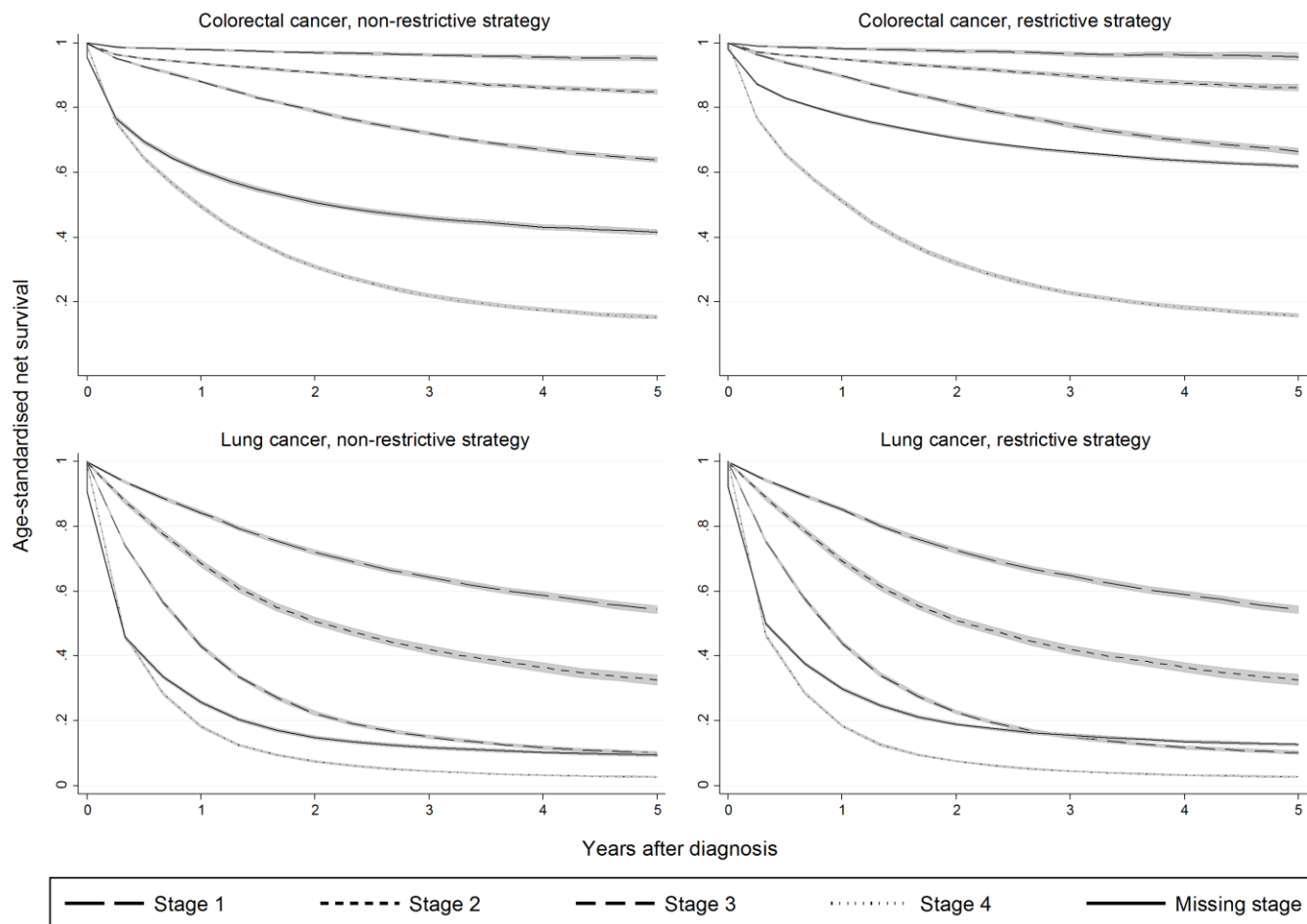




Web-Appendix Figure 8. Deriving M component of TNM stage for lung cancer, England, 2008-2012.



Web-Appendix Figure 9. Age standardised net survival by TNM stage, England 2008-2012



**Notes:**

- T: Tumour component of TNM stage
- NBOCAP: National Bowel Cancer Project
- pT: Pathological T
- #: Percent
- +: Positive
- ≠: Not equal to
- ∴: Missing
- CAS: Cancer Analysis System
- cT: Clinical T
- MRI: Magnetic Resonance Imaging
- iT: Integrated T
- N: Lymph nodes component of TNM stage
- pN: Pathological N
- ≥: Greater than or equal to
- cN: Clinical N
- iN: Integrated N
- M: Distant Metastases component of TNM stage
- cM: Clinical M
- CT: Computerised Tomography scan
- pM: Pathological M
- iM: Integrated M
- pStage: Pathological TNM Stage
- cStage: Clinical TNM Stage
- iStage: Integrated TNM Stage
- LUCADA: Lung Cancer Audit Database