

LONDON
SCHOOL of
HYGIENE
& TROPICAL
MEDICINE



Newton, JN; Briggs, ADM; Murray, CJL; Dicker, D; Foreman, KJ; Wang, HD; Naghavi, M; Forouzanfar, MH; Ohno, SL; Barber, RM; Vos, T; Stanaway, JRD; Schmidt, JC; Hughes, AJ; Fay, DFJ; Ecob, R; Gresser, C; McKee, M; Rutter, H; Abubakar, I; Ali, R; Anderson, HR; Banerjee, A; Bennett, DA; Bernabe, E; Bhui, KS; Biryukov, SM; Bourne, RR; Brayne, CEG; Bruce, NG; Brugha, TS; Burch, M; Capewell, S; Casey, D; Chowdhury, R; Coates, MM; Cooper, C; Critchley, JA; Dargan, PI; Dherani, MK; Elliott, P; Ezzati, M; Fenton, KA; Fraser, MS; Furst, T; Greaves, F; Green, MA; Gunnell, DJ; Hannigan, BM; Hay, RJ; Hay, SI; Hemingway, H; Larson, HJ; Looker, KJ; Lunevicius, R; Lyons, RA; Marcenes, W; Mason-Jones, AJ; Matthews, FE; Moller, H; Murdoch, ME; Newton, CR; Pearce, N; Piel, FB; Pope, D; Rahimi, K; Rodriguez, A; Scarborough, P; Schumacher, AE; Shiue, I; Smeeth, L; Tedstone, A; Valabhji, J; Williams, HC; Wolfe, CDA; Woolf, AD; Davis, ACJ (2015) Changes in health in England, with analysis by English regions and areas of deprivation, 1990-2013: a systematic analysis for the Global Burden of Disease Study 2013. *Lancet*, 386 (10010). pp. 2257-2274. ISSN 0140-6736 DOI: 10.1016/s0140-6736(15)00195-6

Downloaded from: <http://researchonline.lshtm.ac.uk/2530947/>

DOI: 10.1016/s0140-6736(15)00195-6

Usage Guidelines

Please refer to usage guidelines at <http://researchonline.lshtm.ac.uk/policies.html> or alternatively contact researchonline@lshtm.ac.uk.

Available under license: <http://creativecommons.org/licenses/by/2.5/>

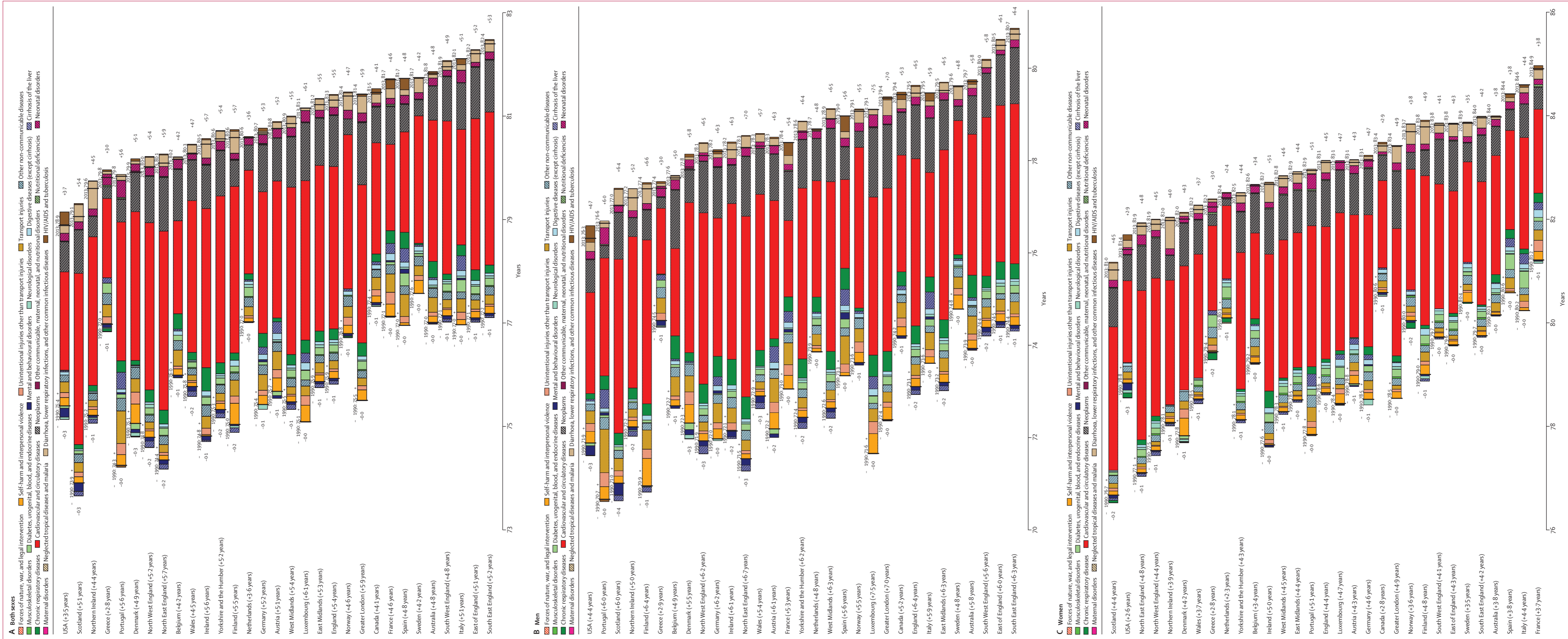


Figure appendix 1: Change in life expectancy at birth for both sexes (A), men (B), and women (C) in EU15+ countries, British nations, and English regions from 1990 to 2013 by broad cause group
 At the top of each bar in black, the life expectancy at birth in 1990 and in 2013 are noted. The number to the right of each bar associated with the life expectancy at birth in 1990 indicates the extension to life expectancy contributed by improvement in mortality rates from specific causes, whereas the number to the left of the same bar is the reduction to life expectancy at birth from increasing mortality rates from specific causes. The number beside each country name is the gain in life expectancy at birth from 1990 to 2013.