

Pictures of beers and standard drinks
LOCALLY AVAILABLE INDUSTRIAL MADE BEERS IN MWANZA, TANZANIA
 Alcohol concentration expressed as Alcohol concentration by volume (ABV)



Kilimanjaro Premium Lager, 4.5% ABV, 500ml
 (2 standard drinks)

Serengeti Premium Lager, 4.8% ABV, 500ml
 (2 standard drinks)

Safari Lager, 5.5% ABV, 500ml
 (3 standard drinks)



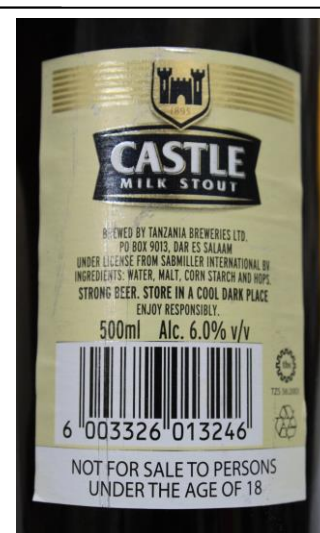
Uhuru Peak Lager, 5.5% ABV, 500ml
 (3 standard drinks)

Senator Extra Lager, 6.0% ABV, 500ml
 (3 standard drinks)

Kilimanjaro Premium Lager, 4.5% ABV, 330ml
 (1 standard drink)

LOCALLY AVAILABLE INDUSTRIAL MADE BEERS IN MWANZA, TANZANIA

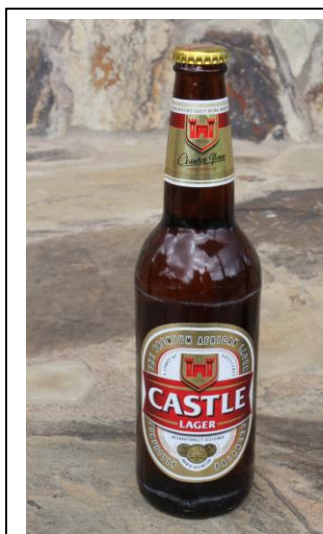
Alcohol concentration expressed as Alcohol concentration by volume (ABV)



Guinness Foreign Extra, 6.5%ABV, 300ml
(2 standard drinks)

Castle Milk Stout, 6.0% ABV, 500ml
(3 standard drinks)

Balimi Extra, 5.8% ABV, 500ml
(3 standard drinks)



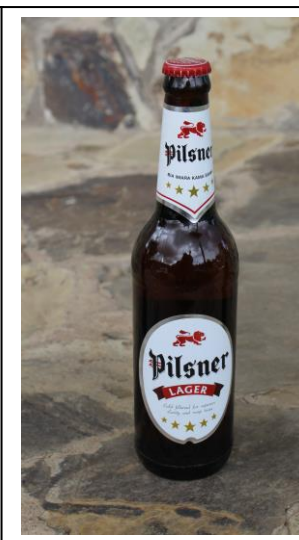
Castle Lager, 5.0% ABV, 500ml
(3 standard drinks)

Serengeti Premium Lager, 4.8% ABV, 330ml
(2 standard drinks)

Tusker Lager, 4.2% ABV, 500ml
(2 standard drinks)

LOCALLY AVAILABLE INDUSTRIAL MADE BEERS IN MWANZA, TANZANIA

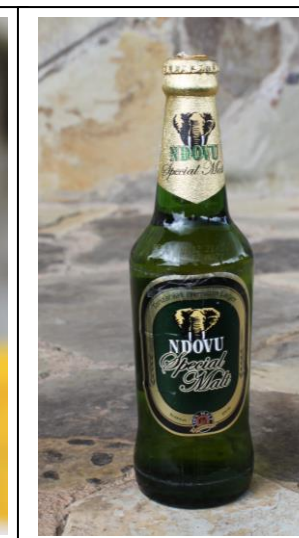
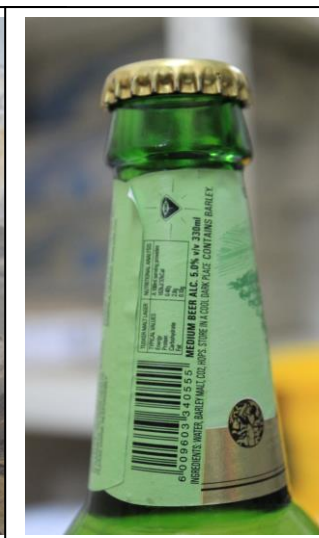
Alcohol concentration expressed as Alcohol concentration by volume (ABV)



Guinness Foreign Extra, 6.5% ABV, 500ml
(3 standard drinks)

The Kick, 7.0% ABV, 500ml
(4 standard drinks)

Pilsner Lager, 5.0% ABV, 500ml
(3 standard drinks)



Castle Lite, 4.0% ABV, 375ml
(2 standard drinks)

Tusker Malt Lager, 5.0% ABV, 330ml
(2 standard drinks)

Ndovu Special Malt, 4.8% ABV, 375ml
(2 standard drinks)

LOCALLY AVAILABLE INDUSTRIAL MADE BEERS IN MWANZA, TANZANIA

Alcohol concentration expressed as Alcohol concentration by volume (ABV)



Safari Lager, 5.5% ABV, 330ml
(2 standard drinks)

Tusker Lager, 4.2% ABV, 330ml
(1 standard drink)

Castle Lager, 5.0% ABV, 330ml
(2 standard drinks)



Kilimanjaro Premium Lager, 4.5% ABV, 330ml
(1 standard drink)

Bavaria Lager, 8.6% ABV, 500ml
(4 standard drinks)

Tusker Lager, 4.2% ABV, 500ml
(2 standard drinks)