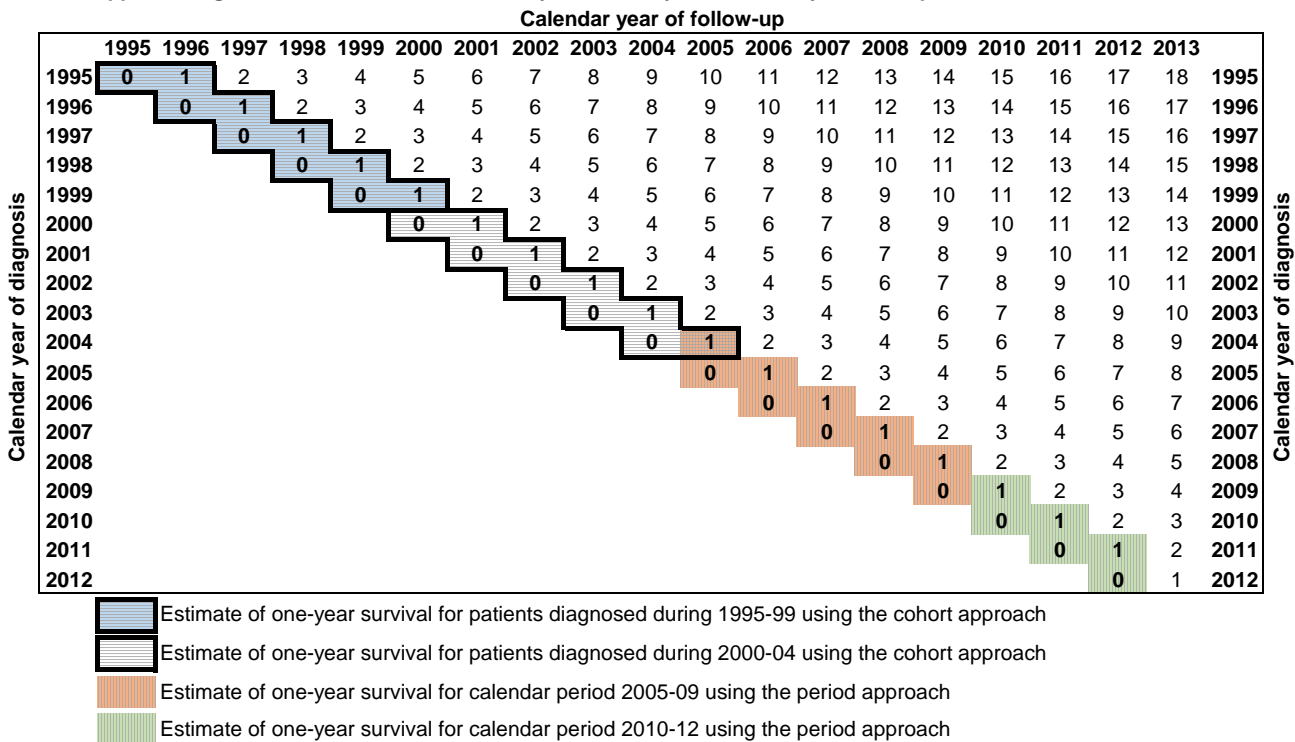


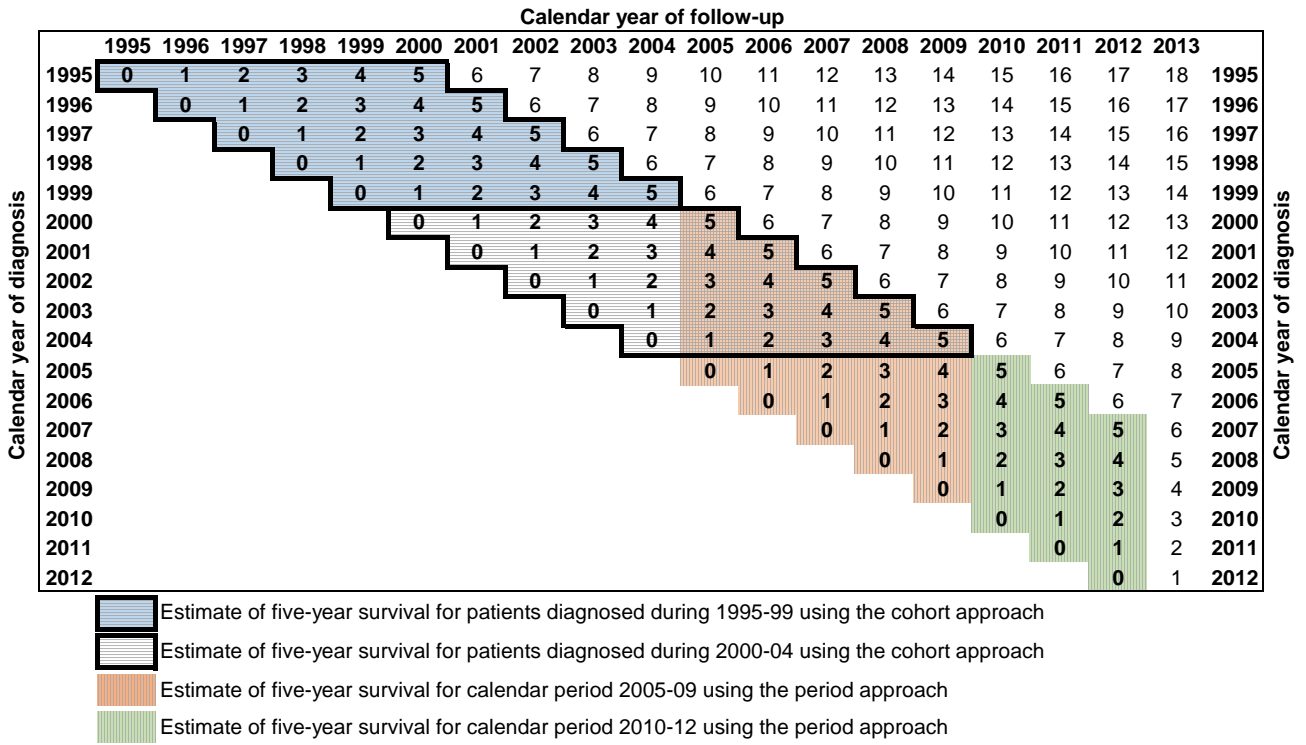
Supplementary Appendix

Web Appendix Figure 1	p2	Structure of survival analysis for one-year survival by calendar period
Web Appendix Figure 2	p3	Structure of survival analysis for five-year survival by calendar period
Web Appendix Figure 3	p4	Structure of survival analysis for one-year survival by year of diagnosis
Web Appendix Figure 4	p5	Structure of survival analysis for five-year survival by year of diagnosis
Web Appendix Table 1	p6	Data quality control by calendar period of diagnosis (records and patients ineligible and excluded) - Stomach cancer
Web Appendix Table 2	p7	Data quality control by calendar period of diagnosis (records and patients ineligible and excluded) - Colon cancer
Web Appendix Table 3	p8	Data quality control by calendar period of diagnosis (records and patients ineligible and excluded) - Rectal cancer
Web Appendix Table 4	p9	Data quality control by calendar period of diagnosis (records and patients ineligible and excluded) - Lung cancer
Web Appendix Table 5	p10	Data quality control by calendar period of diagnosis (records and patients ineligible and excluded) - Breast cancer
Web Appendix Table 6	p11	Data quality control by calendar period of diagnosis (records and patients ineligible and excluded) - Ovarian cancer
Web Appendix Table 7	p12	Arithmetic gap in one-year net survival with 95% confidence intervals for adults (aged 15-99 years) between England and each other country, by calendar period of diagnosis, country and cancer site
Web Appendix Table 8	p13	Web Appendix Table 8. Arithmetic gap in five-year net survival with 95% confidence intervals for adults (aged 15-99 years) between England and each other country, by calendar period of diagnosis, country and cancer site

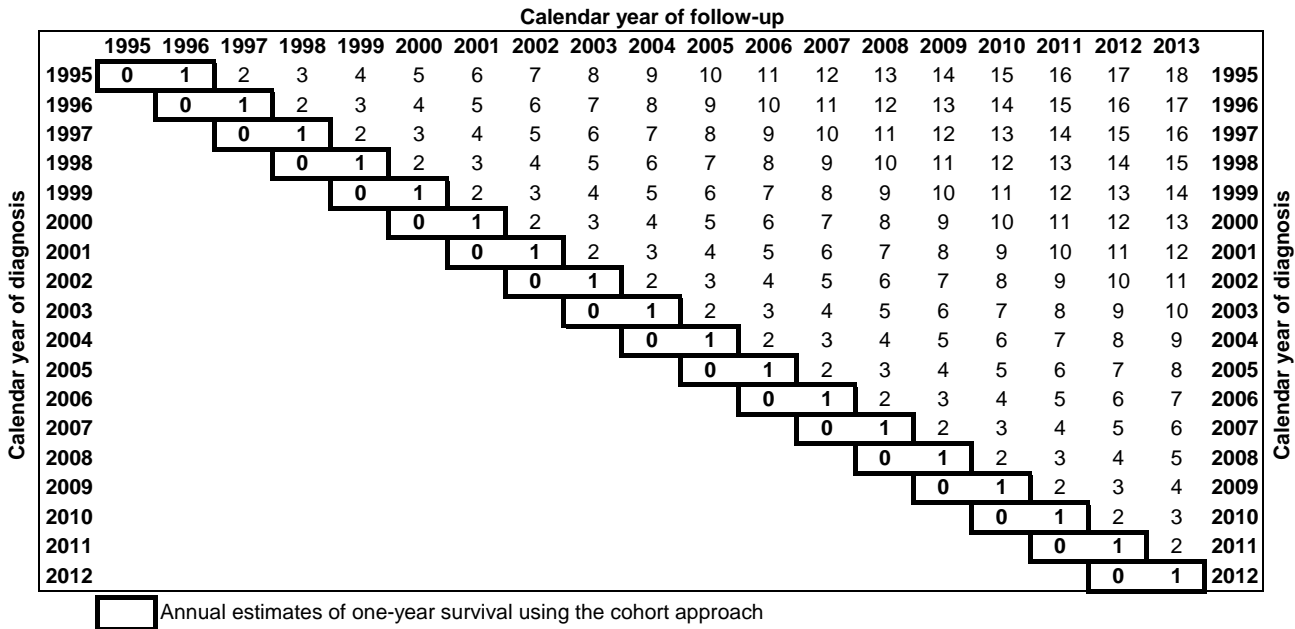
Web Appendix Figure 1. Structure of survival analysis for one-year survival by calendar period



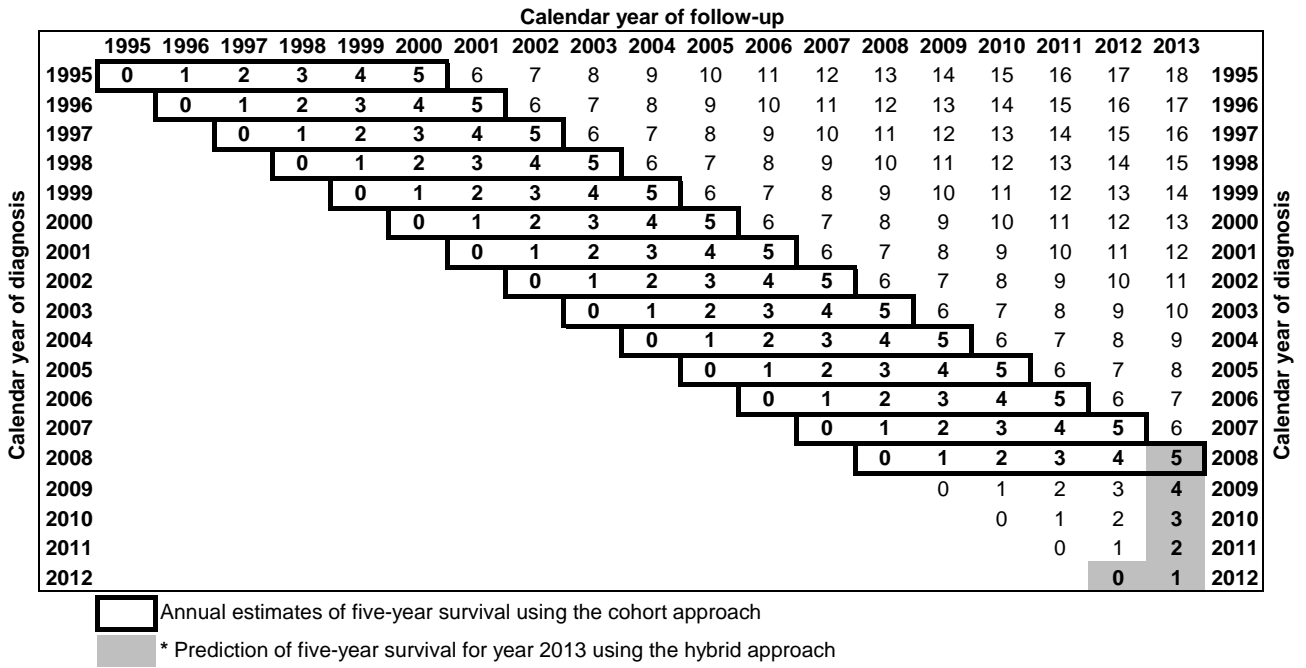
Web Appendix Figure 2. Structure of survival analysis for five-year survival by calendar period



Web Appendix Figure 3. Structure of survival analysis for one-year survival by year of diagnosis



Web Appendix Figure 4. Structure of survival analysis for five-year survival by year of diagnosis *



Web Appendix Table 1. Data quality control by calendar period of diagnosis (records and patients ineligible and excluded) - Stomach cancer															
	1995-2000			2000-2004			2005-2009			2010-2012			1995-2012		
	Records	Patients	%	Records	Patients	%	Records	Patients	%	Records	Patients	%	Records	Patients	%
Total registered	42,370	42,337	100.0	37,347	37,314	100.0	33,470	33,410	100.0	18,851	18,807	100.0	132,038	131,868	100.0
Incomplete data*	29	29	<0.1	14	14	<0.1	32	32	<0.1	4	4	<0.1	79	79	<0.1
Not resident in England	33	33	<0.1	6	6	<0.1	1	1	<0.1	0	0	0.0	40	40	<0.1
In situ neoplasm	224	218	0.5	310	299	0.8	467	440	1.3	321	306	1.6	1,322	1,263	1.0
Benign or uncertain	298	289	0.7	523	513	1.4	1,073	1,057	3.2	1,101	1,085	5.8	2,995	2,944	2.2
Metastatic	25	25	<0.1	25	25	<0.1	13	13	<0.1	0	0	0.0	63	63	<0.1
Kaposi Sarcoma	0	0	0.0	0	0	0.0	1	1	<0.1	1	1	<0.1	2	2	<0.1
Otherwise ineligible	0	0	0.0	0	0	0.0	0	0	0.0	0	0	0.0	0	0	0.0
Lymphoma	0	0	0.0	0	0	0.0	0	0	0.0	0	0	0.0	0	0	0.0
Leukaemia or myeloma	0	0	0.0	0	0	0.0	0	0	0.0	0	0	0.0	0	0	0.0
Aged 100+	19	19	<0.1	20	20	<0.1	20	20	<0.1	18	18	<0.1	77	77	<0.1
Total ineligible		613	1.4		877	2.4		1,564	4.7		1,414	7.5		4,468	3.4
Total eligible		41,724	100.0		36,437	100.0		31,846	100.0		17,393	100.0		127,400	100.0
Vital status unknown	91	58	0.1	105	91	0.2	82	54	0.2	46	43	0.2	324	246	0.2
Sex not known	0	0	0.0	0	0	0.0	2	0	0.0	0	0	0.0	2	0	0.0
Sex-site error	0	0	0.0	0	0	0.0	0	0	0.0	0	0	0.0	0	0	0.0
Site-morphology mismatch	37	37	<0.1	53	53	0.1	134	134	0.4	13	13	<0.1	237	237	0.2
Age-site mismatch	0	0	0.0	0	0	0.0	0	0	0.0	0	0	0.0	0	0	0.0
Age-morphology mismatch	0	0	0.0	0	0	0.0	0	0	0.0	0	0	0.0	0	0	0.0
Age-site-morphology mismatch	0	0	0.0	0	0	0.0	0	0	0.0	0	0	0.0	0	0	0.0
Invalid dates**	5	3	<0.1	5	4	<0.1	2	1	<0.1	2	1	<0.1	14	9	<0.1
Death certificate only	3,012	2,990	7.2	1,447	1,440	4.0	931	920	2.9	358	355	2.0	5,748	5,705	4.5
Duplicate registration	0	0	0.0	0	0	0.0	0	0	0.0	0	0	0.0	0	0	0.0
Synchronous tumours†	155	148	0.4	48	45	0.1	34	29	<0.1	19	14	<0.1	256	236	0.2
Multiple primary same site‡	23	11	<0.1	21	9	<0.1	28	15	<0.1	24	14	<0.1	96	49	<0.1
Total exclusions		3,247	7.8		1,642	4.5		1,153	3.6		440	2.5		6,482	5.1
Patients included in analysis		38,477	92.2		34,795	95.5		30,693	96.4		16,953	97.5		120,918	94.9

* Missing year of birth; missing month and/or year of diagnosis; missing year of last known vital status
** For example, 31 February, or date of diagnosis earlier than date of birth
† Two or more invasive primary malignancies in the same person, in the same site, and with the same date of diagnosis
‡ Two or more invasive primary malignancies in the same person, in the same site, but with different dates of diagnosis

Web Appendix Table 2. Data quality control by calendar period of diagnosis (records and patients ineligible and excluded) - Colon cancer															
	1995-2000			2000-2004			2005-2009			2010-2012			1995-2012		
	Records	Patients	%	Records	Patients	%	Records	Patients	%	Records	Patients	%	Records	Patients	%
Total registered	103,119	102,483	100.0	106,988	106,081	100.0	122,481	120,893	100.0	79,884	78,863	100.0	412,472	408,320	0.0
Incomplete data*	79	79	<0.1	22	22	<0.1	19	19	<0.1	4	4	<0.1	124	124	<0.1
Not resident in England	140	140	0.1	52	51	<0.1	1	1	<0.1	2	2	<0.1	195	194	<0.1
In situ neoplasm	440	419	0.4	1,446	1,381	1.3	4,463	4,223	3.5	4,327	4,056	5.1	10,676	10,079	2.5
Benign or uncertain	2,745	2,534	2.5	3,280	3,049	2.9	3,993	3,718	3.1	1,749	1,664	2.1	11,767	10,965	2.7
Metastatic	222	221	0.2	208	208	0.2	206	205	0.2	118	118	0.1	754	752	0.2
Kaposi Sarcoma	0	0	0.0	1	1	<0.1	1	1	<0.1	0	0	0.0	2	2	<0.1
Otherwise ineligible	183	23	<0.1	140	1	<0.1	172	0	0.0	115	0	0.0	610	24	<0.1
Lymphoma	0	0	0.0	0	0	0.0	0	0	0.0	0	0	0.0	0	0	0.0
Leukaemia or myeloma	0	0	0.0	0	0	0.0	0	0	0.0	0	0	0.0	0	0	0.0
Aged 100+	32	32	<0.1	39	39	<0.1	47	47	<0.1	38	38	<0.1	156	156	<0.1
Total ineligible		3,448	3.4		4,752	4.5		8,214	6.8		5,882	7.5		22,296	5.5
Total eligible		99,035	100.0		101,329	100.0		112,679	100.0		72,981	100.0		386,024	100.0
Vital status unknown	267	183	0.2	238	210	0.2	150	132	0.1	305	301	0.4	960	826	0.2
Sex not known	1	0	0.0	1	0	0.0	1	0	0.0	0	0	0.0	3	0	0.0
Sex-site error	0	0	0.0	0	0	0.0	0	0	0.0	0	0	0.0	0	0	0.0
Site-morphology mismatch	67	67	<0.1	62	62	<0.1	34	34	<0.1	37	37	<0.1	200	200	<0.1
Age-site mismatch	0	0	0.0	0	0	0.0	0	0	0.0	0	0	0.0	0	0	0.0
Age-morphology mismatch	0	0	0.0	0	0	0.0	0	0	0.0	0	0	0.0	0	0	0.0
Age-site-morphology mismatch	25	25	<0.1	25	25	<0.1	37	37	<0.1	31	31	<0.1	118	118	<0.1
Invalid dates**	11	10	<0.1	18	2	<0.1	12	6	<0.1	4	3	<0.1	45	21	<0.1
Death certificate only	5,762	5,697	5.8	3,366	3,327	3.3	2,444	2,409	2.1	1,051	1,031	1.4	12,623	12,464	3.2
Duplicate registration	0	0	0.0	0	0	0.0	0	0	0.0	0	0	0.0	0	0	0.0
Synchronous tumours†	1,006	700	0.7	882	551	0.5	1,165	646	0.6	719	397	0.5	3,772	2,294	0.6
Multiple primary same site‡	869	569	0.6	1,178	741	0.7	1,973	1,139	1.0	1,400	898	1.2	5,420	3,347	0.9
Total exclusions		7,251	7.3		4,918	4.9		4,403	3.9		2,698	3.7		19,270	5.0
Patients included in analysis		91,784	92.7		96,411	95.1		108,276	96.1		70,283	96.3		366,754	95.0

* Missing year of birth; missing month and/or year of diagnosis; missing year of last known vital status

** For example, 31 February, or date of diagnosis earlier than date of birth

† Two or more invasive primary malignancies in the same person, in the same site, and with the same date of diagnosis

‡ Two or more invasive primary malignancies in the same person, in the same site, but with different dates of diagnosis

Web Appendix Table 3. Data quality control by calendar period of diagnosis (records and patients ineligible and excluded) - Rectal cancer															
	1995-2000			2000-2004			2005-2009			2010-2012			1995-2012		
	Records	Patients	%	Records	Patients	%	Records	Patients	%	Records	Patients	%	Records	Patients	%
Total registered	47,207	47,043	100.0	49,646	49,423	100.0	54,604	54,388	100.0	35,533	35,411	100.0	226,757	226,032	100.0
Incomplete data*	46	46	<0.1	19	19	<0.1	18	18	<0.1	10	10	<0.1	93	93	<0.1
Not resident in England	76	76	0.2	32	32	<0.1	2	1	<0.1	1	1	<0.1	111	110	<0.1
In situ neoplasm	596	575	1.2	1,352	1,306	2.6	3,378	3,294	6.1	3,173	3,083	8.7	8,499	8,258	3.7
Benign or uncertain	2,603	2,510	5.3	2,729	2,622	5.3	2,392	2,315	4.3	525	519	1.5	8,249	7,966	3.5
Metastatic	19	18	<0.1	20	20	<0.1	13	13	<0.1	1	1	<0.1	53	52	<0.1
Kaposi Sarcoma	0	0	0.0	0	0	0.0	0	0	0.0	0	0	0.0	0	0	0.0
Otherwise ineligible	0	0	0.0	0	0	0.0	0	0	0.0	0	0	0.0	0	0	0.0
Lymphoma	0	0	0.0	0	0	0.0	0	0	0.0	0	0	0.0	0	0	0.0
Leukaemia or myeloma	0	0	0.0	0	0	0.0	0	0	0.0	0	0	0.0	0	0	0.0
Aged 100+	28	28	<0.1	14	14	<0.1	34	32	<0.1	12	12	0.1	88	86	<0.1
Total ineligible		3,253	6.9		4,013	8.1		5,673	10.4		3,626	10.2		16,565	7.3
Total eligible		43,790	93.1		45,410	91.9		48,715	89.6		31,785	89.8		169,700	100.0
Vital status unknown	181	133	0.7	160	143	0.7	119	105	0.3	217	208	1.2	677	589	0.3
Sex not known	0	0	0.0	1	0	0.0	2	0	0.0	2	0	0.0	5	0	0.0
Sex-site error	0	0	0.0	0	0	0.0	0	0	0.0	0	0	0.0	0	0	0.0
Site-morphology mismatch	98	98	0.2	77	77	0.2	49	49	0.1	26	26	<0.1	250	250	0.1
Age-site mismatch	0	0	0.0	0	0	0.0	0	0	0.0	0	0	0.0	0	0	0.0
Age-morphology mismatch	0	0	0.0	0	0	0.0	0	0	0.0	0	0	0.0	0	0	0.0
Age-site-morphology mismatch	0	0	0.0	0	0	0.0	0	0	0.0	0	0	0.0	0	0	0.0
Invalid dates**	6	5	<0.1	17	1	0.0	6	3	<0.1	2	0	0.0	31	9	<0.1
Death certificate only	1,799	1,769	5.8	1,156	1,147	3.3	788	780	1.8	381	381	1.4	4,124	4,077	2.4
Duplicate registration	0	0	0.0	0	0	0.0	0	0	0.0	0	0	0.0	0	0	0.0
Synchronous tumours†	220	186	0.9	139	108	0.2	102	84	0.2	52	43	0.2	498	406	0.2
Multiple primary same site‡	94	52	0.3	119	62	0.1	127	74	0.2	88	64	0.2	341	165	<0.1
Total exclusions		2,243	5.1		1,538	3.4		1,095	2.2		722	2.3		5,598	3.3
Patients included in analysis		41,547	94.9		43,872	96.6		47,620	97.8		31,063	97.7		164,102	96.7

* Missing year of birth; missing month and/or year of diagnosis; missing year of last known vital status

** For example, 31 February, or date of diagnosis earlier than date of birth

† Two or more invasive primary malignancies in the same person, in the same site, and with the same date of diagnosis

‡ Two or more invasive primary malignancies in the same person, in the same site, but with different dates of diagnosis

Web Appendix Table 4. Data quality control by calendar period of diagnosis (records and patients ineligible and excluded) - Lung cancer

	1995-2000			2000-2004			2005-2009			2010-2012			1995-2012		
	Records	Patients	%	Records	Patients	%	Records	Patients	%	Records	Patients	%	Records	Patients	%
Total registered	162,160	161,897	100.0	37,347	37,314	100.0	33,470	33,410	100.0	18,851	18,807	100.0	132,038	131,868	100.0
Incomplete data*	146	146	<0.1	49	49	<0.1	40	40	<0.1	25	25	<0.1	260	260	<0.1
Not resident in England	214	213	0.1	17	17	<0.1	5	5	<0.1	1	1	<0.1	237	236	<0.1
In situ neoplasm	289	274	0.2	343	318	0.2	363	309	0.2	237	217	0.2	1,232	1,118	0.2
Benign or uncertain	293	282	0.2	429	420	0.3	484	475	0.3	294	282	0.3	1,500	1,459	0.2
Metastatic	1,740	1,730	1.1	1,911	1,907	1.2	1,458	1,448	0.9	770	766	0.7	5,879	5,851	1.0
Kaposi Sarcoma	0	0	0.0	0	0	0.0	0	0	0.0	0	0	0.0	0	0	0.0
Otherwise ineligible	1,573	182	0.1	1,453	0	0.0	1,255	2	<0.1	752	2	<0.1	5,033	186	<0.1
Lymphoma	0	0	0.0	1	0	0.0	2	0	0.0	3	0	0.0	6	0	0.0
Leukaemia or myeloma	1	1	<0.1	0	0	0.0	0	0	0.0	0	0	0.0	1	1	<0.1
Aged 100+	14	13	<0.1	18	16	<0.1	44	39	<0.1	52	51	<0.1	128	119	<0.1
Total ineligible		2,841	1.8		2,727	1.7		2,318	1.4		1,344	1.3		9,230	1.6
Total eligible		159,056	98.2		154,987	98.3		164,660	98.6		105,519	98.7		584,222	100.0
Vital status unknown	395	217	0.1	386	325	0.2	179	134	<0.1	209	181	0.2	1,169	857	0.1
Sex not known	0	0	0.0	0	0	0.0	1	0	0.0	2	0	0.0	3	0	0.0
Sex-site error	0	0	0.0	0	0	0.0	0	0	0.0	0	0	0.0	0	0	0.0
Site-morphology mismatch	4	4	<0.1	4	4	<0.1	10	10	<0.1	1	1	<0.1	19	19	<0.1
Age-site mismatch	0	0	0.0	0	0	0.0	0	0	0.0	0	0	0.0	0	0	0.0
Age-morphology mismatch	0	0	0.0	0	0	0.0	0	0	0.0	0	0	0.0	0	0	0.0
Age-site-morphology mismatch	8	8	<0.1	4	4	<0.1	9	9	<0.1	8	8	<0.1	29	29	<0.1
Invalid dates**	25	12	<0.1	17	13	<0.1	16	10	<0.1	16	6	<0.1	74	41	<0.1
Death certificate only	14,908	14,763	9.3	9,309	9,223	6.0	7,978	7,866	4.8	2,951	2,910	2.8	35,146	34,762	6.0
Duplicate registration	0	0	0.0	0	0	0.0	0	0	0.0	0	0	0.0	0	0	0.0
Synchronous tumours†	758	683	0.4	645	466	0.3	745	534	0.3	496	359	0.3	2,644	2,042	0.3
Multiple primary same site‡	425	256	0.2	593	331	0.2	850	485	0.3	852	515	0.5	2,720	1,587	0.3
Total exclusions		15,943	10.0		10,366	6.7		9,048	5.5		3,980	3.8		39,337	6.7
Patients included in analysis		143,113	90.0		144,621	93.3		155,612	94.5		101,539	96.2		544,885	93.3

* Missing year of birth; missing month and/or year of diagnosis; missing year of last known vital status

** For example, 31 February, or date of diagnosis earlier than date of birth

† Two or more invasive primary malignancies in the same person, in the same site, and with the same date of diagnosis

‡ Two or more invasive primary malignancies in the same person, in the same site, but with different dates of diagnosis

Web Appendix Table 5. Data quality control by calendar period of diagnosis (records and patients ineligible and excluded) - Breast cancer															
	1995-2000			2000-2004			2005-2009			2010-2012			1995-2012		
	Records	Patients	%	Records	Patients	%	Records	Patients	%	Records	Patients	%	Records	Patients	%
Total registered	177,471	175,559	100.0	199,867	196,682	100.0	222,171	216,892	100.0	141,808	139,095	100.0	741,317	728,228	100.0
Incomplete data*	204	204	0.1	44	43	<0.1	33	33	<0.1	17	17	<0.1	298	297	<0.1
Not resident in England	228	228	0.1	94	94	<0.1	6	6	<0.1	2	2	<0.1	330	330	<0.1
In situ neoplasm	11,128	10,579	6.0	16,708	15,930	8.1	23,134	21,333	9.8	15,252	14,325	10.3	66,222	62,167	8.5
Benign or uncertain	493	491	0.3	476	465	0.2	761	729	0.3	592	569	0.4	2,322	2,254	0.3
Metastatic	47	43	<0.1	43	43	<0.1	15	15	<0.1	1	1	<0.1	106	102	<0.1
Kaposi Sarcoma	0	0	0.0	0	0	0.0	0	0	0.0	0	0	0.0	0	0	0.0
Otherwise ineligible	0	0	0.0	0	0	0.0	0	0	0.0	0	0	0.0	0	0	0.0
Lymphoma	0	0	0.0	1	0	0.0	0	0	0.0	0	0	0.0	1	0	0.0
Leukaemia or myeloma	0	0	0.0	0	0	0.0	0	0	0.0	0	0	0.0	0	0	0.0
Aged 100+	126	126	<0.1	145	144	<0.1	176	173	<0.1	134	133	<0.1	581	576	<0.1
Total ineligible		11,671	6.6		16,719	8.5		22,289	10.3		15,047	10.8		65,726	9.0
Total eligible		163,888	100.0		179,963	100.0		194,603	100.0		124,048	100.0		662,502	100.0
Vital status unknown	705	504	0.3	662	614	0.3	437	410	0.2	688	673	0.5	2,492	2,201	0.3
Sex not known	0	0	0.0	0	0	0.0	0	0	0.0	0	0	0.0	0	0	0.0
Sex-site error	0	0	0.0	0	0	0.0	0	0	0.0	0	0	0.0	0	0	0.0
Site-morphology mismatch	29	29	<0.1	15	15	<0.1	15	15	<0.1	7	7	<0.1	66	66	<0.1
Age-site mismatch	10	10	<0.1	9	9	<0.1	13	13	<0.1	9	9	<0.1	41	41	<0.1
Age-morphology mismatch	0	0	0.0	0	0	0.0	0	0	0.0	0	0	0.0	0	0	0.0
Age-site-morphology mismatch	0	0	0.0	0	0	0.0	0	0	0.0	0	0	0.0	0	0	0.0
Invalid dates**	12	10	<0.1	72	7	<0.1	26	22	<0.1	4	3	<0.1	114	42	<0.1
Death certificate only	5,647	5,523	3.4	3,239	3,171	1.8	1,622	1,560	0.8	886	842	0.7	11,394	11,096	1.7
Duplicate registration	0	0	0.0	0	0	0.0	0	0	0.0	0	0	0.0	0	0	0.0
Synchronous tumours†	2,394	1,713	1.0	3,132	1,868	1.0	4,015	2,298	1.2	2,491	1,513	1.2	12,032	7,392	1.1
Multiple primary same site‡	3,791	2,743	1.7	5,924	4,127	2.3	8,670	6,038	3.1	6,002	4,686	3.8	24,387	17,594	2.7
Total exclusions		10,532	6.4		9,811	5.5		10,356	5.3		7,733	6.2		38,432	5.8
Patients included in analysis		153,356	93.6		170,152	94.5		184,247	94.7		116,315	93.8		624,070	94.2

* Missing year of birth; missing month and/or year of diagnosis; missing year of last known vital status

** For example, 31 February, or date of diagnosis earlier than date of birth

† Two or more invasive primary malignancies in the same person, in the same site, and with the same date of diagnosis

‡ Two or more invasive primary malignancies in the same person, in the same site, but with different dates of diagnosis

Web Appendix Table 6. Data quality control by calendar period of diagnosis (records and patients ineligible and excluded) - Ovarian cancer

	1995-2000			2000-2004			2005-2009			2010-2012			1995-2012		
	Records	Patients	%	Records	Patients	%	Records	Patients	%	Records	Patients	%	Records	Patients	%
Total registered	30,352	30,278	100.0	31,669	31,590	100.0	32,592	32,493	100.0	20,220	20,183	100.0	114,833	114,544	0.0
Incomplete data*	42	42	0.1	35	35	0.1	39	39	0.1	23	23	0.1	139	139	0.1
Not resident in England	39	39	0.1	9	9	<0.1	3	3	<0.1	1	1	<0.1	52	52	<0.1
In situ neoplasm	0	0	0.0	0	0	0.0	0	0	0.0	0	0	0.0	0	0	0.0
Benign or uncertain	1,045	1,029	3.4	1,130	1,087	3.4	1,634	1,615	5.0	945	930	4.6	4,754	4,661	4.1
Metastatic	169	165	0.5	194	194	0.6	119	119	0.4	56	56	0.3	538	534	0.5
Kaposi Sarcoma	0	0	0.0	0	0	0.0	0	0	0.0	0	0	0.0	0	0	0.0
Otherwise ineligible	111	6	<0.1	85	0	0.0	86	0	0.0	50	0	0.0	332	6	<0.1
Lymphoma	0	0	0.0	0	0	0.0	0	0	0.0	0	0	0.0	0	0	0.0
Leukaemia or myeloma	0	0	0.0	0	0	0.0	0	0	0.0	0	0	0.0	0	0	0.0
Aged 100+	6	6	<0.1	12	12	<0.1	13	13	<0.1	6	6	<0.1	37	37	<0.1
Total ineligible		1,287	4.3		1,337	4.2		1,789	5.5		1,016	5.0		5,429	4.7
Total eligible		28,991	100.0		30,253	100.0		30,704	100.0		19,167	100.0		109,115	100.0
Vital status unknown	98	54	0.2	73	65	0.2	86	58	0.2	65	55	0.3	322	232	0.2
Sex not known	0	0	0.0	0	0	0.0	0	0	0.0	0	0	0.0	0	0	0.0
Sex-site error	0	0	0.0	0	0	0.0	0	0	0.0	0	0	0.0	0	0	0.0
Site-morphology mismatch	1,706	1,706	5.9	2,130	2,130	7.0	2,368	2,368	7.7	1,628	1,628	8.5	7,832	7,832	7.2
Age-site mismatch	0	0	0.0	0	0	0.0	0	0	0.0	0	0	0.0	0	0	0.0
Age-morphology mismatch	0	0	0.0	0	0	0.0	0	0	0.0	0	0	0.0	0	0	0.0
Age-site-morphology mismatch	0	0	0.0	0	0	0.0	0	0	0.0	0	0	0.0	0	0	0.0
Invalid dates**	2	1	<0.1	4	2	<0.1	4	1	<0.1	1	0	0.0	11	4	<0.1
Death certificate only	1,746	1,717	5.9	1,186	1,176	3.9	742	737	2.4	375	371	1.9	4,049	4,001	3.7
Duplicate registration	0	0	0.0	0	0	0.0	0	0	0.0	0	0	0.0	0	0	0.0
Synchronous tumours†	107	75	0.3	108	71	0.2	129	82	0.3	55	34	0.2	399	262	0.2
Multiple primary same site‡	82	43	0.1	104	70	0.2	175	105	0.3	97	70	0.4	458	288	0.3
Total exclusions		3,596	12.4		3,514	11.6		3,351	10.9		2,158	11.3		12,619	11.6
Patients included in analysis		25,395	87.6		26,739	88.4		27,353	89.1		17,009	88.7		96,496	88.4

* Missing year of birth; missing month and/or year of diagnosis; missing year of last known vital status

** For example, 31 February, or date of diagnosis earlier than date of birth

† Two or more invasive primary malignancies in the same person, in the same site, and with the same date of diagnosis

‡ Two or more invasive primary malignancies in the same person, in the same site, but with different dates of diagnosis

Web Appendix Table 7. Arithmetic gap in one-year net survival with 95% confidence intervals for adults (aged 15-99 years) between England and each other country, by calendar period of diagnosis, country and cancer site

	1995-1999	2000-2004	2005-2009
Stomach			
Australia	15.0 (13.8, 16.3)	13.2 (12.0, 14.5)	11.6 (10.2, 12.9)
Canada	8.1 (7.1, 9.1)	6.0 (5.0, 7.0)	4.6 (3.5, 5.6)
Denmark	-0.6 (-2.6, 1.3)	-3.9 (-5.9, -1.9)	-0.9 (-2.9, 1.0)
Norway	7.1 (5.1, 9.1)	6.4 (4.3, 8.5)	5.9 (3.7, 8.0)
Sweden	7.2 (5.7, 8.7)	4.8 (3.2, 6.4)	5.2 (3.5, 6.9)
Colon			
Australia	10.5 (9.9, 11.0)	10.7 (10.2, 11.2)	10.5 (10.0, 11.0)
Canada	7.7 (7.2, 8.2)	8.2 (7.7, 8.6)	7.7 (7.3, 8.1)
Denmark	0.8 (-0.2, 1.8)	0.5 (-0.4, 1.4)	1.5 (0.6, 2.3)
Norway	7.3 (6.3, 8.3)	5.9 (5.0, 6.8)	5.9 (5.1, 6.8)
Sweden	8.4 (7.5, 9.2)	8.2 (7.4, 9.0)	8.4 (7.7, 9.1)
Rectum			
Australia	8.9 (8.1, 9.7)	7.7 (7.0, 8.5)	6.9 (6.2, 7.6)
Canada	7.1 (6.3, 8.0)	5.0 (4.2, 5.8)	4.6 (4.0, 5.3)
Denmark	-0.4 (-1.7, 0.9)	0.2 (-0.9, 1.3)	1.5 (0.5, 2.5)
Norway	6.8 (5.5, 8.0)	4.3 (3.2, 5.5)	5.4 (4.3, 6.4)
Sweden	7.6 (6.6, 8.5)	5.4 (4.5, 6.2)	4.4 (3.6, 5.3)
Lung			
Australia	13.9 (13.3, 14.5)	12.6 (12, 13.2)	10.9 (10.3, 11.6)
Canada	12.2 (11.8, 12.6)	9.6 (9.1, 10.0)	8.4 (8.0, 8.8)
Denmark	1.1 (0.3, 1.8)	3.2 (2.5, 4.0)	4.0 (3.2, 4.8)
Norway	6.7 (5.7, 7.7)	4.6 (3.6, 5.6)	8.0 (7.0, 9.0)
Sweden	9.4 (8.5, 10.3)	8.8 (8.0, 9.7)	9.4 (8.6, 10.3)
Breast			
Australia	5.5 (5.2, 5.9)	3.8 (3.5, 4.1)	2.4 (2.1, 2.7)
Canada	4.7 (4.4, 5.0)	2.8 (2.6, 3.1)	1.4 (1.1, 1.6)
Denmark	2.2 (1.6, 2.8)	1.5 (1.0, 2.0)	1.0 (0.6, 1.5)
Norway	4.8 (4.2, 5.4)	3.1 (2.5, 3.6)	2.2 (1.7, 2.7)
Sweden	5.8 (5.4, 6.2)	4.1 (3.7, 4.4)	2.9 (2.6, 3.2)
Ovary			
Australia	12.9 (11.5, 14.3)	12.1 (10.7, 13.4)	9.8 (8.5, 11.1)
Canada	10.3 (8.9, 11.6)	7.8 (6.6, 9.1)	6.6 (5.5, 7.7)
Denmark	3.7 (1.9, 5.5)	4.7 (2.9, 6.5)	5.7 (4.0, 7.4)
Norway	11.1 (9.2, 13.0)	12.6 (10.8, 14.4)	9.7 (8.0, 11.5)
Sweden	17.6 (16.1, 19.1)	15.7 (14.3, 17.2)	14.5 (13.1, 16.0)

The gap was calculated by subtracting net survival in England from that in each other country, and is expressed as the arithmetic difference between the two percentages. Confidence intervals were calculated using the formula for the confidence interval for the difference between two means with normal distributions.

Web Appendix Table 8. Arithmetic gap in five-year net survival with 95% confidence intervals for adults (aged 15-99 years) between England and each other country, by calendar period of diagnosis, country and cancer site

	1995-1999	2000-2004	2005-2009
Stomach			
Australia	11.6 (10.4, 12.8)	11.5 (10.3, 12.6)	9.7 (8.4, 11.0)
Canada	6.8 (5.9, 7.7)	6.8 (5.8, 7.7)	6.6 (5.7, 7.6)
Denmark	-0.5 (-2.1, 1.1)	-1.0 (-2.7, 0.6)	-0.3 (-2.0, 1.5)
Norway	6.8 (5.0, 8.6)	5.7 (3.7, 7.6)	5.9 (3.8, 8.0)
Sweden	6.9 (5.5, 8.3)	4.7 (3.2, 6.1)	5.0 (3.5, 6.6)
Colon			
Australia	12.8 (12.0, 13.5)	12.2 (11.4, 12.9)	10.5 (9.8, 11.2)
Canada	9.3 (8.6, 9.9)	9.2 (8.5, 9.8)	9.1 (8.5, 9.7)
Denmark	0.7 (-0.6, 1.9)	1.2 (-0.1, 2.4)	2.2 (1.0, 3.3)
Norway	8.4 (7.0, 9.7)	7.5 (6.2, 8.7)	8.1 (6.9, 9.3)
Sweden	7.9 (6.7, 9.0)	8.5 (7.4, 9.5)	8.8 (7.8, 9.8)
Rectum			
Australia	11.1 (9.9, 12.4)	10.0 (8.9, 11.0)	7.9 (6.9, 9.0)
Canada	7.7 (6.5, 9.0)	6.7 (5.5, 7.8)	6.5 (5.5, 7.6)
Denmark	-1.2 (-2.9, 0.6)	0.0 (-1.7, 1.6)	2.1 (0.6, 3.7)
Norway	9.0 (7.2, 10.9)	7.9 (6.1, 9.6)	8.3 (6.6, 10.1)
Sweden	9.1 (7.7, 10.6)	5.8 (4.4, 7.1)	5.7 (4.4, 7.0)
Lung			
Australia	6.7 (6.2, 7.1)	6.4 (6.0, 6.8)	5.5 (5.0, 6.0)
Canada	8.1 (7.8, 8.4)	7.2 (6.9, 7.5)	7.8 (7.5, 8.1)
Denmark	1.0 (0.4, 1.5)	1.2 (0.7, 1.7)	1.8 (1.2, 2.5)
Norway	3.7 (2.9, 4.4)	3.3 (2.5, 4.1)	5.5 (4.7, 6.4)
Sweden	5.2 (4.5, 5.8)	4.9 (4.2, 5.6)	6.1 (5.4, 6.9)
Breast			
Australia	10.7 (10.0, 11.4)	7.8 (7.2, 8.4)	5.1 (4.4, 5.8)
Canada	9.8 (9.2, 10.3)	6.7 (6.1, 7.2)	4.7 (4.3, 5.2)
Denmark	1.9 (0.8, 2.9)	2.1 (1.1, 3.0)	0.9 (0.0, 1.9)
Norway	7.6 (6.4, 8.8)	5.5 (4.4, 6.6)	4.8 (3.7, 5.9)
Sweden	9.9 (9.1, 10.7)	7.0 (6.2, 7.7)	5.1 (4.4, 5.9)
Ovary			
Australia	6.7 (5.2, 8.2)	5.9 (4.4, 7.4)	4.2 (2.7, 5.7)
Canada	7.1 (5.6, 8.5)	4.4 (3.0, 5.7)	4.2 (2.8, 5.6)
Denmark	1.8 (-0.1, 3.7)	2.1 (0.2, 3.9)	4.0 (2.0, 6.1)
Norway	7.3 (5.1, 9.5)	9.1 (6.9, 11.3)	7.0 (4.8, 9.2)
Sweden	11.4 (9.6, 13.2)	11.7 (9.9, 13.4)	10.2 (8.4, 12.0)

The gap was calculated by subtracting net survival in England from that in each other country, and is expressed as the arithmetic difference between the two percentages. Confidence intervals were calculated using the formula for the confidence interval for the difference between two means with normal distributions.