

LONDON
SCHOOL of
HYGIENE
& TROPICAL
MEDICINE



Virtanen, M; Nyberg, ST; Batty, GD; Jokela, M; Heikkil, K; Fransson, EI; Alfredsson, L; Bjorner, JB; Borritz, M; Burr, H; Casini, A; Clays, E; De Bacquer, D; Dragano, N; Elovainio, M; Erbel, R; Ferrie, JE; Hamer, M; Jckel, KH; Kittel, F; Knutsson, A; Koskenvuo, M; Koskinen, A; Lunau, T; Madsen, IE; Nielsen, ML; Nordin, M; Oksanen, T; Pahkin, K; Pejtersen, JH; Pentti, J; Rugulies, R; Salo, P; Shipley, MJ; Siegrist, J; Steptoe, A; Suominen, SB; Theorell, T; Toppinen-Tanner, S; Vninen, A; Vahtera, J; Westerholm, PJ; Westerglund, H; Slopen, N; Kawachi, I; Singh-Manoux, A; Kivimki, M; IPD-Work Consortium, (2013) Perceived job insecurity as a risk factor for incident coronary heart disease: systematic review and meta-analysis. *BMJ (Clinical research ed)*, 347. f4746. ISSN 0959-8138 DOI: <https://doi.org/10.1136/bmj.f4746>

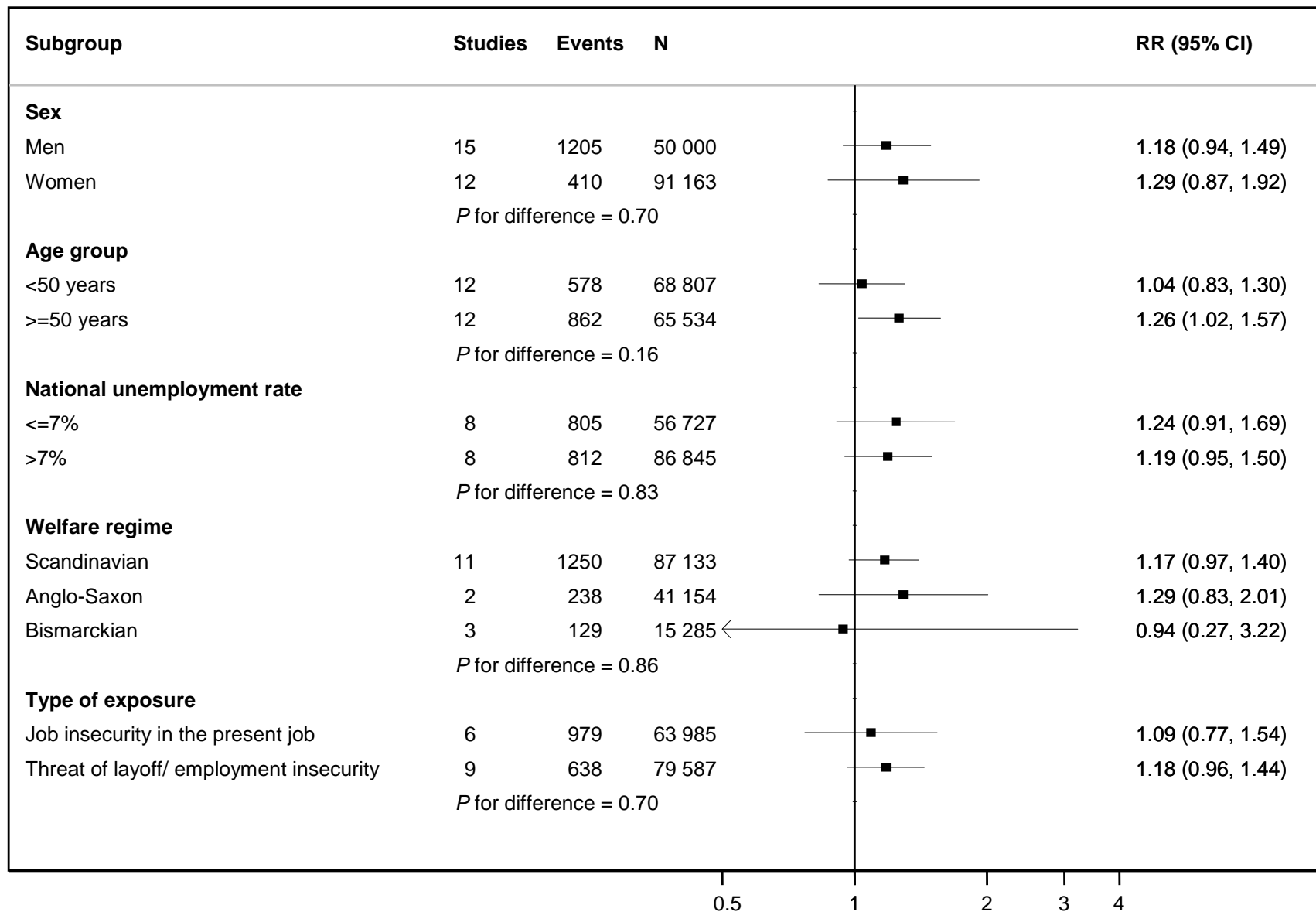
Downloaded from: <http://researchonline.lshtm.ac.uk/2025499/>

DOI: [10.1136/bmj.f4746](https://doi.org/10.1136/bmj.f4746)

Usage Guidelines

Please refer to usage guidelines at <http://researchonline.lshtm.ac.uk/policies.html> or alternatively contact researchonline@lshtm.ac.uk.

Available under license: Creative Commons Attribution Non-commercial
<http://creativecommons.org/licenses/by-nc/3.0/>



Appendix fig. S1. Sub-group analysis of the association between job insecurity and coronary heart disease, multivariable adjusted. *P* for difference gives the statistical significance of group differences based on heterogeneity index. Welfare regime: Scandinavian (Denmark, Finland, Sweden); Anglo-Saxon (UK, US); Bismarckian (Belgium, Germany).