

The NEW ENGLAND JOURNAL of MEDICINE

ESTABLISHED IN 1812

JANUARY 28, 2010

VOL. 362 NO. 4

Effect of Human Rotavirus Vaccine on Severe Diarrhea in African Infants

Shabir A. Madhi, M.D., Nigel A. Cunliffe, M.B., Ch.B., Ph.D., Duncan Steele, Ph.D., Desirée Witte, M.D., Mari Kirsten, M.D., Cheryl Louw, M.D., Bagrey Ngwira, M.D., John C. Victor, Ph.D., M.P.H., Paul H. Gillard, M.D., Brigitte B. Cheuvart, Ph.D., Htay H. Han, M.B., B.S., and Kathleen M. Neuzil, M.D., M.P.H.

ABSTRACT

BACKGROUND

Rotavirus is the most common cause of severe gastroenteritis among young children worldwide. Data are needed to assess the efficacy of the rotavirus vaccine in African children.

METHODS

We conducted a randomized, placebo-controlled, multicenter trial in South Africa (3166 infants; 64.1% of the total) and Malawi (1773 infants; 35.9% of the total) to evaluate the efficacy of a live, oral rotavirus vaccine in preventing severe rotavirus gastroenteritis. Healthy infants were randomly assigned in a 1:1:1 ratio to receive two doses of vaccine (in addition to one dose of placebo) or three doses of vaccine — the pooled vaccine group — or three doses of placebo at 6, 10, and 14 weeks of age. Episodes of gastroenteritis caused by wild-type rotavirus during the first year of life were assessed through active follow-up surveillance and were graded with the use of the Vesikari scale.

RESULTS

A total of 4939 infants were enrolled and randomly assigned to one of the three groups; 1647 infants received two doses of the vaccine, 1651 infants received three doses of the vaccine, and 1641 received placebo. Of the 4417 infants included in the per-protocol efficacy analysis, severe rotavirus gastroenteritis occurred in 4.9% of the infants in the placebo group and in 1.9% of those in the pooled vaccine group (vaccine efficacy, 61.2%; 95% confidence interval, 44.0 to 73.2). Vaccine efficacy was lower in Malawi than in South Africa (49.4% vs. 76.9%); however, the number of episodes of severe rotavirus gastroenteritis that were prevented was greater in Malawi than in South Africa (6.7 vs. 4.2 cases prevented per 100 infants vaccinated per year). Efficacy against all-cause severe gastroenteritis was 30.2%. At least one serious adverse event was reported in 9.7% of the infants in the pooled vaccine group and in 11.5% of the infants in the placebo group.

CONCLUSIONS

Human rotavirus vaccine significantly reduced the incidence of severe rotavirus gastroenteritis among African infants during the first year of life. (ClinicalTrials.gov number, NCT00241644.)

From the Department of Science and Technology/National Research Foundation: Vaccine Preventable Diseases, University of the Witwatersrand, Johannesburg (S.A.M.); the Department of Paediatric Surgery, University of Pretoria, Pretoria (M.K.); Madibeng Center for Research, Brits (C.L.); and the Medical Research Council Diarrhoeal Pathogens Research Unit, University of Limpopo, Limpopo (C.L.) — all in South Africa; the Division of Medical Microbiology, University of Liverpool, Liverpool, United Kingdom (N.A.C., D.W.); Initiative for Vaccine Research, World Health Organization, Geneva (D.S.); the College of Medicine, University of Malawi, Blantyre, Malawi (D.W., B.N.); the Rotavirus Vaccine Program, PATH, Seattle (J.C.V., K.M.N.); and Glaxo-SmithKline Biologicals, Rixensart, Belgium (P.H.G., B.B.C., H.H.H.). Address reprint requests to Dr. Cunliffe at the Division of Medical Microbiology, School of Infection and Host Defence, University of Liverpool, Daulby St., Liverpool L69 3GA, United Kingdom, or at n.a.cunliffe@liv.ac.uk.

Drs. Madhi and Cunliffe contributed equally to this article.

N Engl J Med 2010;362:289-98.

Copyright © 2010 Massachusetts Medical Society.

ROTAVIRUS IS THE MOST IMPORTANT cause of severe gastroenteritis among children worldwide. The World Health Organization (WHO) estimates that globally 527,000 deaths occur each year among children as a result of rotavirus infection¹; more than 230,000 of the deaths occur in sub-Saharan Africa. Six of the seven countries with the highest mortality due to rotavirus diarrhea are located in Africa.² Similarly, data generated from global rotavirus surveillance networks highlight the burden of hospitalizations for rotavirus³; among young children hospitalized for acute diarrhea, the median detection rate for rotavirus was 40% globally and 41% in Africa. Therefore, measures to prevent rotavirus diarrhea in African children are urgently needed.

Vaccines represent the best hope for preventing the severe consequences of rotavirus infection, especially in impoverished regions where resources and access to care may be limited. Two oral, live attenuated rotavirus vaccines, Rotarix (GlaxoSmithKline Biologicals) and RotaTeq (Merck), have shown excellent protective efficacy against severe rotavirus gastroenteritis in trials conducted mainly in Latin America, Europe, and the United States.⁴⁻⁶ The WHO's Strategic Advisory Group of Experts (SAGE) first reviewed data on these vaccines in 2005 and strongly recommended the inclusion of rotavirus vaccination in the national immunization programs of countries and regions in which, according to available data, severe rotavirus gastroenteritis has a substantial public health impact.⁷ But SAGE noted that live oral vaccines may not be as effective in protecting the poorest children in developing countries as they are in protecting children in industrialized countries and therefore recommended that efficacy trials be conducted in representative populations in Africa and Asia before the recommendation is extended.^{1,7} In response to this mandate, we conducted a clinical trial to determine whether Rotarix, an attenuated human rotavirus vaccine containing a G1P[8] strain, could protect African children against severe rotavirus gastroenteritis.

METHODS

STUDY DESIGN AND PARTICIPANTS

We conducted a double-blind, randomized, placebo-controlled multicenter study in South Africa and Malawi to assess the efficacy, safety, and immunogenicity of Rotarix. A placebo-controlled

design was chosen because the vaccine was not licensed or available in these countries at the time the study was initiated, and data were needed to inform policy decisions in low-resource countries. Children who were infected with human immunodeficiency virus (HIV) and children who had been exposed to HIV were included in the trial on the basis of the absence of serious immunosuppression in infants at the age at which these vaccines are first given (6 weeks), the experience with other live vaccines in HIV-infected children, and the need to inform decisions on the introduction of vaccine in settings with high prevalences of HIV. The study protocol and the informed consent form were approved by the ethics committee at the WHO and by the ethics committees at all study centers. The trial was conducted in accordance with Good Clinical Practice guidelines. The parents or legal representatives of the infants participating in the study provided written informed consent before the initiation of any study-related procedures. All the investigators shared responsibility for the design of the study and the accrual and analysis of the data. All the authors participated in the preparation of the manuscript and made the decision to submit the manuscript for publication.

In South Africa, healthy infants, 5 to 10 weeks of age, were enrolled from October 2005 through January 2006 and from November 2006 through early February 2007, before the anticipated rotavirus seasons of 2006 and 2007, respectively.^{8,9} Since rotavirus is known to circulate year-round in Malawi,¹⁰ infants in Malawi were enrolled from October 2006 through July 2007.

Infants were randomly assigned individually, in a 1:1:1 ratio, into three groups to receive two doses of the rotavirus vaccine at 10 and 14 weeks of age; three doses of the vaccine at 6, 10, and 14 weeks of age; or three doses of placebo. Infants in the two-dose vaccine group received a dose of placebo at 6 weeks of age. Vaccines that are administered routinely according to the guidelines of the Expanded Program on Immunization (EPI) were concomitantly administered with the vaccine or placebo. No restrictions were imposed on the breast-feeding of infants around the time of vaccination.

TESTING FOR HIV

The parents or legal representatives of the infants were given the opportunity to have the infants

tested for HIV at the time the first dose of vaccine or placebo was administered or 1 month after the last dose, and testing was performed when consent was given. Detailed information regarding the testing and treatment of infants is included in the Supplementary Appendix, available with the full text of this article at NEJM.org.

VACCINE

The study vaccine, the calcium carbonate buffer, and the placebo were developed and manufactured by GlaxoSmithKline Biologicals. The composition of the vaccine was the same as the commercial formulation, and the placebo was the same formulation without the viral antigen.¹¹

ANALYSIS OF STOOL SAMPLES DURING EPISODES OF GASTROENTERITIS

An episode of gastroenteritis was identified by the occurrence of diarrhea, whether or not it was accompanied by vomiting; diarrhea was defined as the passage of three or more stools that were looser than normal within a 24-hour period. Stool samples were collected during each episode of gastroenteritis that occurred between the date the first dose of vaccine or placebo was administered and the date the child reached 1 year of age. Stool samples were tested for rotavirus with the use of an enzyme-linked immunosorbent assay (ELISA) (Rotaclone, Meridian Bioscience). All stool samples that were positive for rotavirus were examined further with the use of a reverse-transcriptase-polymerase-chain-reaction (PCR) assay, followed by a reverse hybridization assay to determine the G and P types.¹²

ASSESSMENT OF VACCINE EFFICACY

The efficacy of the vaccine was assessed during the period from 2 weeks after the last dose of vaccine or placebo was administered until the child reached 1 year of age. Active surveillance for all gastroenteritis episodes was conducted by members of the study staff through weekly visits to parents or guardians to collect diary cards and through the collection of data from health clinics that served the study populations. The severity of each episode of gastroenteritis was evaluated with the use of the Vesikari scale¹³ (on which scores range from 1 to 20, with higher scores indicating greater severity) and was categorized as severe if the score was 11 or more.

ASSESSMENT OF SAFETY

All serious adverse events including deaths were recorded for the period between the date the first dose of vaccine or placebo was administered and the date the child reached 1 year of age. The site investigator, who was unaware of the group assignments of the children, determined whether the serious adverse events appeared to have any causal association with vaccination.

ASSESSMENT OF IMMUNOGENICITY

Blood samples were collected from approximately 10% of the infants immediately before the first dose of vaccine or placebo was administered and from all infants 1 month after the last dose to determine the serum concentrations of antirotavirus IgA antibody. The blood samples were analyzed with the use of an ELISA (GlaxoSmithKline Biologicals), with the assay cutoff point set at 20 U per milliliter.¹⁴

STATISTICAL ANALYSIS

The primary study analysis compared findings from the pooled vaccine group with those from the placebo group. The secondary end points were the efficacy of each vaccine dose (i.e., the two-dose vaccine and the three-dose vaccine) as compared with placebo. A supplementary analysis was performed to evaluate the efficacy, immunogenicity, and safety of the vaccine according to country.

Infants who had received the complete vaccination course and had entered the efficacy surveillance period, which began 2 weeks after the last dose, were included in the prespecified primary efficacy analysis (per-protocol efficacy cohort). Infants in the pooled vaccine and placebo groups who had at least one episode of severe rotavirus gastroenteritis caused by wild-type rotavirus strains during the period from 2 weeks after the last dose was administered until the infants reached 1 year of age were considered as having achieved the primary outcome. The efficacy analysis was also performed on data from the total cohort, which included infants who received at least one dose of vaccine or placebo. The safety analysis was performed on data from the total cohort. The immunogenicity analysis was performed on data from infants in the per-protocol efficacy cohort for whom immunogenicity data were available. The method used to calculate

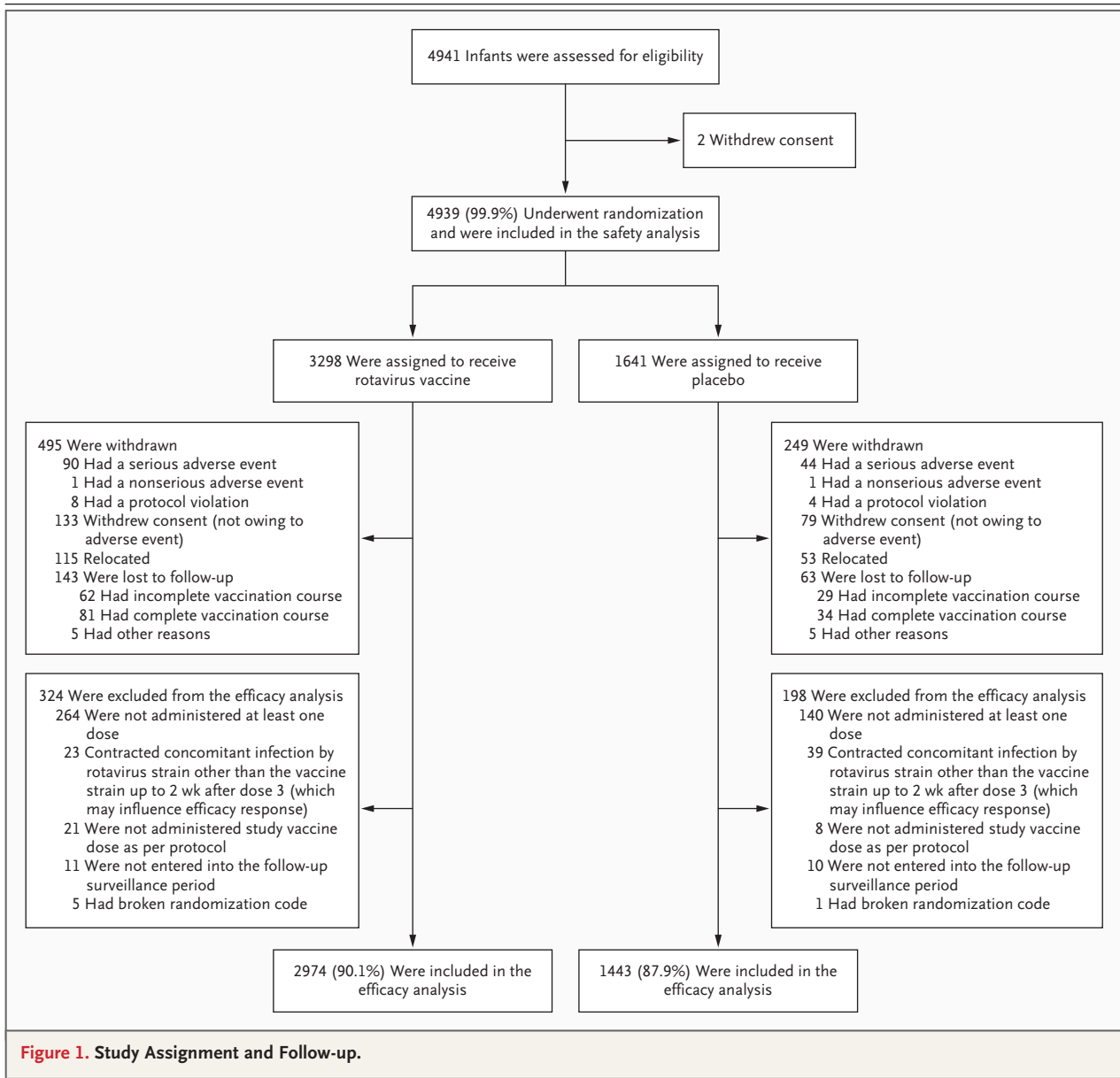
the sample size and specific information about the statistical analysis are shown in the Supplementary Appendix.

RESULTS

STUDY POPULATION

A total of 4939 infants were enrolled and randomly assigned to one of three groups (Fig. 1); 1647 infants were assigned to the two-dose group, 1651 to the three-dose group (for a total of 3298 in pooled vaccine group), and 1641 to

the placebo group. A total of 4417 infants were included in the primary efficacy analysis — 2974 in the pooled vaccine group and 1443 in the placebo group. The reasons for withdrawal from the study are listed in Figure 1. The demographic characteristics of the infants and the proportion of children who were infected with HIV were similar across the study groups. Almost all infants ($\geq 99\%$) received oral poliovirus vaccine concomitantly with each dose of rotavirus vaccine or placebo (Table 1 in the Supplementary Appendix).



EFFICACY

Severe gastroenteritis caused by circulating rotavirus was detected in 70 of 1443 infants in the placebo group (4.9%) as compared with 56 of 2974 infants in the pooled vaccine group (1.9%), resulting in a vaccine efficacy against the primary outcome of severe rotavirus gastroenteritis of 61.2% (95% confidence interval [CI], 44.0 to 73.2; $P < 0.001$) (Table 1). Vaccination with the rotavirus vaccine prevented 5.0 episodes of severe rotavirus gastroenteritis per 100 infant-years (Table 2). The vaccine showed efficacy against severe rotavirus gastroenteritis both in infants who received two

doses of vaccine (58.7% efficacy; 95% CI, 35.7 to 74.0) and in those who received three doses (63.7% efficacy; 95% CI, 42.4 to 77.8). In South Africa, the efficacy of the vaccine was 76.9% (95% CI, 56.0 to 88.4), and in Malawi the vaccine efficacy was 49.4% (95% CI, 19.2 to 68.3); 4.2 and 6.7 episodes of severe rotavirus gastroenteritis per 100 infant-years were prevented by vaccination in South Africa and Malawi, respectively (Tables 1 and 2). The efficacy of the rotavirus vaccine against rotavirus gastroenteritis of any severity is presented in Table 2 in the Supplementary Appendix.

The distribution of rotavirus G and P types

Table 1. Efficacy of Rotavirus Vaccine with Respect to the Development of Severe Rotavirus Gastroenteritis and Hospitalization for Rotavirus Gastroenteritis.*

Variable	Infants with at Least One Event				Vaccine Efficacy % (95% CI)	P Value†
	Rotavirus Vaccine		Placebo			
	no./total no.	% (95% CI)	no./total no.	% (95% CI)		
Severe rotavirus gastroenteritis						
Overall						
Pooled	56/2974	1.9 (1.4–2.4)	70/1443	4.9 (3.8–6.1)	61.2 (44.0–73.2)	<0.001
Two-dose	30/1496	2.0 (1.4–2.9)	—	—	58.7 (35.7–74.0)	<0.001
Three-dose	26/1478	1.8 (1.2–2.6)	—	—	63.7 (42.4–77.8)	<0.001
Malawi						
Pooled	41/1030	4.0 (2.9–5.4)	38/483	7.9 (5.6–10.6)	49.4 (19.2–68.3)	0.003
Two-dose	21/525	4.0 (2.5–6.0)	—	—	49.2 (11.1–71.7)	0.01
Three-dose	20/505	4.0 (2.4–6.1)	—	—	49.7 (11.3–72.2)	0.01
South Africa						
Pooled	15/1944	0.8 (0.4–1.3)	32/960	3.3 (2.3–4.7)	76.9 (56.0–88.4)	<0.001
Two-dose	9/971	0.9 (0.4–1.8)	—	—	72.2 (40.4–88.3)	<0.001
Three-dose	6/973	0.6 (0.2–1.3)	—	—	81.5 (55.1–93.7)	<0.001
Rotavirus-type-specific severe rotavirus gastroenteritis‡						
Overall						
G1 strain	17/2974	0.6 (0.3–0.9)	23/1443	1.6 (1.0–2.4)	64.1 (29.9–82.0)	0.002
Non-G1 strain	39/2974	1.3 (0.9–1.8)	47/1443	3.3 (2.4–4.3)	59.7 (37.1–74.4)	<0.001
Malawi						
G1 strain	6/1030	0.6 (0.2–1.3)	5/483	1.0 (0.3–2.4)	43.7 (<0–85.7)	0.34
Non-G1 strain	35/1030	3.4 (2.4–4.7)	33/483	6.8 (4.7–9.5)	50.3 (17.4–70.0)	0.005
South Africa						
G1 strain	11/1944	0.6 (0.3–1.0)	18/960	1.9 (1.1–2.9)	69.8 (32.5–87.1)	0.002
Non-G1 strain	4/1944	0.2 (0.1–0.5)	14/960	1.5 (0.8–2.4)	85.9 (55.1–96.6)	<0.001
Hospitalization for rotavirus gastroenteritis‡	14/2974	0.5 (0.3–0.8)	16/1443	1.1 (0.6–1.8)	57.5 (7.2–80.8)	0.02

* A total of 4417 infants were included in the efficacy analysis — 2974 in the pooled vaccine group and 1443 in the placebo group.

† P values were calculated with the use of a two-sided Fisher's exact test. P values of less than 0.05 were considered to indicate a statistically significant difference.

‡ Data in the rotavirus vaccine group are for the pooled vaccine cohort.

Table 2. Risk of Severe Rotavirus Gastroenteritis in the Pooled Vaccine Group and the Placebo Group, According to Dose, Country, and Rotavirus Strain.*

Cohort	Rotavirus Vaccine		Placebo		Difference in Rate (95% CI) [†]
	No. in Cohort	Episodes/100 Infants/Yr (95% CI)	No. in Cohort	Episodes/100 Infants/Yr (95% CI)	
Severe rotavirus gastroenteritis					
Pooled	2974	3.0 (2.3–3.9)	1443	8.0 (6.3–10.1)	5.0 (3.1–7.2)
Two-dose	1496	3.2 (2.2–4.6)	—	—	4.8 (2.6–7.1)
Three-dose	1478	2.8 (1.9–4.1)	—	—	5.2 (3.0–7.5)
Country [‡]					
Malawi	1030	6.5 (4.8–8.8)	483	13.1 (9.6–18.0)	6.7 (2.4–11.9)
South Africa	1944	1.2 (0.7–2.0)	960	5.4 (3.8–7.7)	4.2 (2.4–6.5)
Rotavirus type [‡]					
Total cohort	2974		1443		
G1 strain		0.9 (0.6–1.5)		2.6 (1.7–3.9)	1.7 (0.6–3.0)
Non-G1 strain		2.1 (1.5–2.9)		5.3 (4.0–7.1)	3.2 (1.7–5.1)
Malawi	1030		483		
G1 strain		0.9 (0.4–2.1)		1.7 (0.7–4.0)	0.7 (<0–3.1)
Non-G1 strain		5.5 (4.0–7.7)		11.3 (8.1–16.0)	5.8 (1.9–10.7)
South Africa	1944		960		
G1 strain		0.9 (0.5–1.6)		3.0 (1.9–4.8)	2.1 (0.8–3.9)
Non-G1 strain		0.3 (0.1–0.9)		2.4 (1.4–4.0)	2.0 (0.9–3.7)

* The analyses are based on the efficacy cohort, which comprised 4417 infants — 2974 in the pooled vaccine group and 1443 in the placebo group.

[†] The difference in rate is calculated as the episodes per 100 infants per year in the placebo group minus the episodes per 100 infants per year in the rotavirus vaccine group.

[‡] Data in the rotavirus vaccine group are for the pooled vaccine cohort.

differed between South Africa and Malawi (Fig. 1 in the Supplementary Appendix). The G1P[8] strain was detected in 57.0% of the episodes among recipients of the placebo in South Africa and in 12.9% of the episodes among recipients of the placebo in Malawi. The type-specific efficacy against severe rotavirus gastroenteritis and the difference in incidence rates between the vaccine groups and the placebo group are shown in Table 1 and Table 2, respectively.

The incidence rate of severe gastroenteritis from any cause was 8.6% in the pooled vaccine group as compared with 12.3% in the placebo group, corresponding to a reduction in the rate with vaccination of 30.2% (95% CI, 15.0 to 42.6; $P < 0.001$) (Table 3). The reductions in all-cause severe gastroenteritis were statistically significant in both countries. The efficacy of the vaccine in the total vaccinated cohort was similar to

that in the per-protocol efficacy cohort (Tables 3 to 6 in the Supplementary Appendix).

SAFETY

At least one serious adverse event occurred during the study period in 319 of the 3298 infants in the pooled vaccine group (9.7%; 95% CI, 8.7 to 10.7) and in 189 of the 1641 infants in the placebo group (11.5%; 95% CI, 10.0 to 13.2) (Table 7 in the Supplementary Appendix). During the entire study period, 83 deaths occurred among infants in the pooled vaccine group (2.5%; 95% CI, 2.0 to 3.1) and 43 deaths occurred among those in the placebo group (2.6%; 95% CI, 1.9 to 3.5). A single case of intussusception occurred 11 weeks after the third dose of rotavirus vaccine in a 6-month-old child who was assigned to the three-dose vaccine group. The child underwent bowel resection and recovered fully. Three adverse

Table 3. Efficacy of Rotavirus Vaccine against All-Cause Severe Gastroenteritis.*

Cohort	Infants with at Least One Event of All-Cause Severe Gastroenteritis				Vaccine Efficacy % (95% CI)	P Value†
	Rotavirus Vaccine		Placebo			
	no./total no.	% (95% CI)	no./total no.	% (95% CI)		
Overall	256/2974	8.6 (7.6–9.7)	178/1443	12.3 (10.7–14.1)	30.2 (15.0–42.6)	<0.001
Malawi	187/1030	18.2 (15.8–20.6)	117/483	24.2 (20.5–28.3)	25.1 (4.7–40.8)	0.007
South Africa	69/1944	3.5 (2.8–4.5)	61/960	6.4 (4.9–8.1)	44.1 (19.8–61.0)	<0.001

* The analyses are based on the efficacy cohort, which comprised 4417 infants — 2974 in the pooled vaccine group and 1443 in the placebo group.

† P values were calculated with the use of a two-sided Fisher's exact test. P values of less than 0.05 were considered to indicate a statistically significant difference.

events were judged by the investigators to be related to vaccination — two cases of sepsis and one of otitis media.

IMMUNOGENICITY

At 1 month after the last dose of vaccine was administered, the seroconversion rates for antirotavirus IgA in South Africa were 57.1% (95% CI, 44.7 to 68.9) in the two-dose group and 66.7% (95% CI, 54.0 to 77.8) in the three-dose group. The seroconversion rates in Malawi were 47.2% (95% CI, 30.4 to 64.5) in the two-dose group and 57.1% (95% CI, 42.2 to 71.2) in the three-dose group. In the placebo group, the seropositivity rates for antirotavirus IgA at 1 month after the last dose were 16.7% (95% CI, 14.2 to 19.5) in South Africa and 40.4% (95% CI, 34.9 to 46.1) in Malawi.

DISCUSSION

This study shows that a live, oral rotavirus vaccine significantly reduces the episodes of severe rotavirus gastroenteritis in African children during the first year of life. The attack rate for severe rotavirus gastroenteritis was higher in these populations than has been reported in other studies of rotavirus vaccines.^{4,5} Because of this high incidence of severe disease, a vaccine efficacy of 61.2% resulted in a substantial vaccine-attributable reduction in severe rotavirus gastroenteritis (reduction of 5.0 cases per 100 infant-years). In addition, the rotavirus vaccine was associated with a reduction in all-cause severe gastroenteritis of 30.2%. This reduction in the incidence of the disease occurred in a trial that was designed to simulate real-world conditions of use; thus, the rotavirus vaccine is expected to deliver a considerable pub-

lic health benefit when it is introduced into similar settings.

The overall efficacy of the rotavirus vaccine in preventing episodes of severe rotavirus gastroenteritis (61.2%) was lower than that observed in European studies and Latin American studies (96.4% and 84.8%, respectively), which included some low- to middle-income countries.^{4–6,15} This finding is consistent with findings from other studies of live oral vaccines, such as the oral poliovirus vaccine,¹⁶ the cholera vaccine,¹⁷ oral typhoid vaccines,¹⁸ and earlier rotavirus vaccines,¹⁹ none of which were as immunogenic or effective in populations in developing countries as they were in populations in industrialized countries. Several mechanisms have been proposed to explain why live oral rotavirus vaccines may not be as efficacious in populations of infants from low-income countries.²⁰ Possible reasons include host characteristics, such as poor nutritional status and enteric coinfections; levels of antirotavirus antibodies in breast milk; and interference by maternal antibody or by coadministration of the oral poliovirus vaccine, which may reduce rotavirus antibody levels.^{21,22} The potential role of these and other factors will be important to elucidate, in order to further improve the performance of these vaccines in populations where they are most needed.

The efficacy of the rotavirus vaccine in Malawian infants in this study was lower than that in their South African counterparts (49.4% vs. 76.9%). In addition to potential differences mentioned above, rotavirus circulation differs in the two countries (a winter–spring peak in South Africa^{8,9} as compared with year-round circulation in Malawi¹⁰), and that difference was reflected in the study enrollment strategies (preceding the

rotavirus season in South Africa as compared with year-round in Malawi). The rotavirus seropositivity rate among placebo recipients 1 month after the last dose had been given was greater among Malawian infants than among South African infants (40.4% vs. 16.7%), suggesting that Malawian infants have high exposure to wild-type rotavirus infection in the first 5 months of life. Since infection with wild-type rotavirus confers protection against the development of severe rotavirus disease later in infancy,²³ the greater exposure of the infants in the placebo group in Malawi to rotavirus infection before their entry into the follow-up period may have lowered the estimate of vaccine efficacy in Malawi. Despite the lower point estimate for efficacy, the number of severe cases of rotavirus gastroenteritis prevented was greater in Malawi than in South Africa (6.7 vs. 4.2 cases prevented per 100 infant-years), owing to the higher incidence of severe rotavirus gastroenteritis in Malawi.

In this study, the diversity of the circulating strains was striking. In Malawi, only 12.9% of the rotavirus strains were G1P[8] — the strain on which this vaccine is based, and the most commonly occurring strain globally.^{24,25} A substantial proportion of G2, G8, G9, and G12 strains were isolated during the course of this study. Rotavirus types G2, G8, and G9 have circulated for several years in both countries, whereas rotavirus type G12 has been reported more recently.^{26,27} It is unlikely, however, that these differences in strains contributed to the lower vaccine efficacy, since the efficacy against G1 and non-G1 severe rotavirus gastroenteritis was similar. These data are consistent with an integrated analysis of previous efficacy trials of the rotavirus vaccine, which indicates that the rotavirus vaccine provides protection against severe rotavirus gastroenteritis caused by G1 and non-G1 strains.²⁸ The ability of a rotavirus vaccine to protect against a wide panel of strains is important in Africa, where the diversity of rotavirus strains is substantial.^{24,25,29}

We did not detect significant differences in vaccine immunogenicity or efficacy between the cohort receiving two vaccine doses and the cohort receiving three doses, although this study was not powered to detect such differences. There was a slight but nonsignificant trend toward higher seroconversion rates and vaccine efficacy with the three-dose schedule. It should be noted

that in the two-dose schedule used in this study, the doses of vaccine were administered at the second and third childhood vaccine visit, when the infants were an average of 11 and 16 weeks of age, respectively. Outside the setting of a clinical trial, a two-dose schedule in which the rotavirus vaccine is administered at the second and third childhood vaccination visits is not practical, since it is recommended that the first dose of rotavirus vaccine be delivered before the infant is 12 weeks of age, owing to lingering concerns stemming from the age-dependent risk of intussusception associated with a previous rotavirus vaccine.¹ Since children in developing countries frequently present late for vaccination visits,³⁰ this age restriction would deny many children the opportunity to receive the rotavirus vaccine if it were recommended at a later visit. Although a two-dose schedule in which the vaccine is administered at the first and second childhood vaccination visits is a more practical option, such a schedule was not tested in this study. Administering rotavirus vaccines at younger ages could lower the immunogenicity of the vaccines, because of the potential for greater interference of maternal antibody²⁰ and enhanced replication of the oral poliovirus vaccine.^{22,31,32} It will be important to undertake studies to assess the effectiveness of two doses of rotavirus vaccine administered at earlier ages than those at which they were administered in this study.

The WHO's Global Advisory Committee on Vaccine Safety (GACVS) has reviewed the safety of the currently licensed rotavirus vaccines^{33,34} and has concluded that in clinical trials of these vaccines, no association was seen between receipt of the vaccines and an increased risk of intussusception. Further, postmarketing surveillance data show that an intussusception risk that is of a similar magnitude to that which had been associated with a previous rotavirus vaccine, RotaShield (Wyeth–Lederle), is unlikely.^{34,35} The single case of intussusception in this trial was not temporally related to rotavirus vaccination, and the rate of serious adverse events did not differ between infants who received the vaccine and those who received the placebo. Continuing surveillance of the safety of the vaccines as they are introduced into more countries will be important.

On the basis of this study and other supporting data, SAGE recently recommended that rotavirus vaccination of infants be included in all na-

tional immunization programs, in conjunction with other proven interventions for diarrheal disease.³⁶ Appropriate financing mechanisms that will allow ministries of health in Africa to bring this potentially lifesaving vaccine to the children in greatest need are urgently needed.

The clinical trials were funded and coordinated by GlaxoSmithKline and the PATH Rotavirus Vaccine Program, a collaboration with the WHO and the Centers for Disease Control and Prevention, with support from the Global Alliance for Vaccines and Immunization (GAVI).

Dr. Madhi reports receiving lecture fees from GlaxoSmithKline and consulting fees from Merck; Dr. Cunliffe, receiving lecture fees and grant support from Sanofi Pasteur and GlaxoSmithKline; Dr. Gillard, owning shares in GlaxoSmithKline; and Dr. Han, owning shares in GlaxoSmithKline. No other potential conflict of interest relevant to this article was reported.

We thank the volunteers and their families; the members of the Clinical Trial Study Team; from Malawi — coinvestigators: Dr. S. Todd, Dr. N. Bostock; laboratory management: M. Goodall, J. Fulakesa; coordinator: A. Turner and the investigator team; from South Africa — coinvestigators: Dr. T.J. Lerumo (principal investigator, Stanza Bopape Clinic), Dr. P.R. Madiba, Dr. V.O.

Seopela, Dr. N.M. Mahlase (principal investigator, Soshanguve Clinic), Dr. R.A.P. Selepe, Dr. M. Nchabeleng (principal investigator, Soshanguve Block L Clinic), Dr. M.R. Lekalakala, Dr. T. Van Der Westhuizen (principal investigator, Mamelodi West Clinic), Dr. T. Vally, Dr. T.P. Skosana (principal investigator, Maibuye Clinic), Dr. M.R. Kenoshi, Dr. B. Maroane (Diepkloof And Eldorado Clinics), Dr. C. Cutland, Dr. M. Groome, Dr. V. Gosai, Dr. E.V. Aghachi (Bertoni), Dr. F. Kiggundu (Lethlabile Clinic), Dr. N. Nyalunga, Dr. C. Werner (principal investigator, Oukasie Clinic), Dr. F. Scholtz, Dr. T.J. Botha (principal investigator, Karenpark Clinic), Dr. M. Venter; Rota Consortium — Dr. S. Aspinall (National Coordinator), P. Bos (Representative, Diarrhoeal Pathogens Research Unit), Prof. J. Hugo (Representative, Madibeng Centre For Research), S. Qolohle (Project Manager), D. Traynor (Operations Manager); Site Managers — A. Venter, I. Groenewold, Dr. T. Sithebe, M. Sauerman; from GlaxoSmithKline — A. Bouckenoghe, A. Delem, and L. Wannerd for their contribution to study design and S. Damaso, C. Bicer, and P.V. Suryakiran for statistical analysis; Y. Guerra and the safety team for management of safety information and C. Bougelet and team for laboratory testing; A. Dujardin, A. Ay, S. Vansteenkiste, and B. Anspach for global study management; local study monitoring teams and clinical operation teams from South Africa and Malawi; the data management team; G. Subramanyam, who contributed to technical writing aspects, and N. Van Driessche for editorial assistance.

REFERENCES

- World Health Organization. Rotavirus vaccines. *Wkly Epidemiol Rec* 2007;82:285-96.
- Assessing vaccine-preventable diseases burden and immunization impact. Geneva: World Health Organization. (Accessed December 31, 2009, at http://www.who.int/immunization_monitoring/burden/en/)
- Global networks for surveillance of rotavirus gastroenteritis, 2001–2008. *Wkly Epidemiol Rec* 2008;83:421-8.
- Vesikari T, Matson DO, Dennehy P, et al. Safety and efficacy of a pentavalent human–bovine (WC3) reassortant rotavirus vaccine. *N Engl J Med* 2006;354:23-33.
- Ruiz-Palacios GM, Pérez-Schael I, Velázquez FR, et al. Safety and efficacy of an attenuated vaccine against severe rotavirus gastroenteritis. *N Engl J Med* 2006;354:11-22.
- Araujo EC, Clemens SA, Oliveira CS, et al. Safety, immunogenicity, and protective efficacy of two doses of RIX4414 live attenuated human rotavirus vaccine in healthy infants. *J Pediatr (Rio J)* 2007;83:217-24.
- Meeting of the Immunization Strategic Advisory Group of Experts, November 2005 — recommendations and conclusions. *Wkly Epidemiol Rec* 2006;81:1-12.
- Steele AD, Alexander JJ, Hay IT. Rotavirus-associated gastroenteritis in black infants in South Africa. *J Clin Microbiol* 1986;23:992-4.
- Steele AD, Peenze I, de Beer MC, et al. Anticipating rotavirus vaccines: epidemiology and surveillance of rotavirus in South Africa. *Vaccine* 2003;21:354-60.
- Cunliffe NA, Ngwira BM, Dove W, et al. Epidemiology of rotavirus infections in children in Blantyre, Malawi, 1997-2007. *J Infect Dis* (in press).
- O’Ryan M. Rotarix (RIX4414): an oral human rotavirus vaccine. *Expert Rev Vaccines* 2007;6:11-9.
- Pang XL, Joensuu J, Hoshino Y, Kapikian AZ, Vesikari T. Rotaviruses detected by reverse transcription polymerase chain reaction in acute gastroenteritis during a trial of rhesus-human reassortant rotavirus tetravalent vaccine: implications for vaccine efficacy analysis. *J Clin Virol* 1999;13:9-16.
- Ruuska T, Vesikari T. Rotavirus disease in Finnish children: use of numerical scores for clinical severity of diarrheal episodes. *Scand J Infect Dis* 1990;22:259-67.
- Ward RL, Bernstein DI, Shukla R, et al. Effects of antibodies to rotavirus on protection of adults challenged with a human rotavirus. *J Infect Dis* 1989;159:79-88.
- Vesikari T, Karvonen A, Prymula R, et al. Efficacy of human rotavirus vaccine against rotavirus gastroenteritis during the first 2 years of life in European infants: randomised, double-blind controlled study. *Lancet* 2007;370:1757-63.
- John TJ. Antibody response of infants in tropics to five doses of oral polio vaccine. *Br Med J* 1976;1:812.
- Suharyoo, Simanjutak CH, Witham N, et al. Safety and immunogenicity of a single-dose live oral cholera vaccine CVD103-HgR in 5-9-year-old Indonesian children. *Lancet* 1992;340:689-94.
- Simanjutak CH, Paleologo FP, Punjabin NH, et al. Oral immunization against typhoid fever in Indonesia with Ty21a vaccine. *Lancet* 1991;338:1055-9.
- Georges-Courbot MC, Monges J, Siopathis MR, et al. Evaluation of the efficacy of a low-passage bovine rotavirus (strain WC3) vaccine in children in Central Africa. *Res Virol* 1991;142:405-11.
- Glass RI, Bresee JS, Turcios R, Fischer TK, Parashar UD, Steele AD. Rotavirus vaccines: targeting the developing world. *J Infect Dis* 2005;192:Suppl 1:S160-S166.
- Tregnaighi M, Lopez P, De Leon T, et al. Oral human rotavirus vaccine RIX4414 (Rotarix) co-administered with routine EPI vaccinations including oral polio vaccine (OPV) is highly efficacious in Latin-America. Presented at the 13th International Congress on Infectious Diseases, Kuala Lumpur, Malaysia, June 19–22, 2008.
- Zaman K, Sack DA, Yunus M, et al. Successful co-administration of a human rotavirus and oral poliovirus vaccines in Bangladeshi infants in a 2-dose schedule at 12 and 16 weeks of age. *Vaccine* 2009;27:1333-9.
- Velázquez FR, Matson DO, Calva JJ, et al. Rotavirus infection in infants as protection against subsequent infections. *N Engl J Med* 1996;335:1022-8.
- Santos N, Hoshino Y. Global distribution of rotavirus serotypes/genotypes and its implication for the development and implementation of an effective rotavirus vaccine. *Rev Med Virol* 2005;15:29-56.
- Gentsch JR, Laird AR, Bielfelt B, et al. Serotype diversity and reassortment between human and animal rotavirus strains: implications for rotavirus vaccine pro-

- grams. *J Infect Dis* 2005;192:Suppl:S146-S159.
26. Cunliffe NA, Ngwira BM, Dove W, et al. Serotype G12 rotaviruses, Lilongwe, Malawi. *Emerg Infect Dis* 2009;15:87-90.
27. Page NA, de Beer MC, Seheri LM, Dewar JB, Steele AD. The detection and molecular characterization of human G12 genotypes in South Africa. *J Med Virol* 2009;81:106-13.
28. De Vos B, Han HH, Bouckennooghe A, et al. Live attenuated human rotavirus vaccine, RIX4414, provides clinical protection in infants against rotavirus strains with and without shared G and P genotypes: integrated analysis of randomized controlled trials. *Pediatr Infect Dis J* 2009;28:261-6.
29. Steele AD, Ivanoff B. Rotavirus strains circulating in Africa during 1996-1999: emergence of G9 strains and P[6] strains. *Vaccine* 2003;21:361-7.
30. Clark A, Sanderson C. Timing of children's vaccinations in 45 low-income and middle-income countries: an analysis of survey data. *Lancet* 2009;373:1543-9.
31. Steele AD, Tumbo J, Reynders J, et al. Comparison of 2 different regimens (two doses versus three doses) in terms of reactogenicity and immunogenicity of the live attenuated human rotavirus vaccine RIX4414 in South African infants. Presented at the 11th Asian Conference on Diarrheal Disease and Nutrition, Bangkok, Thailand, March 8-10, 2006.
32. Anh DD, Thiem VD, Hutagalung Y, et al. Immunogenicity, reactogenicity and safety of the oral live attenuated human rotavirus vaccine (RIX4414) oral suspension (liquid formulation) in Vietnamese infants. Presented at the 13th International Congress on Infectious Diseases, Kuala Lumpur, Malaysia, June 19-22, 2008.
33. Global Advisory Committee on Vaccine Safety, 2-3 December 2005. *Wkly Epidemiol Rec* 2006;81:13-20.
34. Global Advisory Committee on Vaccine Safety, 17-18 December 2008. *Wkly Epidemiol Rec* 2009;84:37-40.
35. Murphy TV, Gargiullo PM, Massoudi MS, et al. Intussusception among infants given an oral rotavirus vaccine. *N Engl J Med* 2001;344:564-72.
36. Meeting of the Immunization Strategic Advisory Group of Experts, April 2009 — conclusions and recommendations. *Wkly Epidemiol Rec* 2009;84:220-36.

Copyright © 2010 Massachusetts Medical Society.

FULL TEXT OF ALL JOURNAL ARTICLES ON THE WORLD WIDE WEB

Access to the complete contents of the *Journal* on the Internet is free to all subscribers. To use this Web site, subscribers should go to the *Journal's* home page (NEJM.org) and register by entering their names and subscriber numbers as they appear on their mailing labels. After this one-time registration, subscribers can use their passwords to log on for electronic access to the entire *Journal* from any computer that is connected to the Internet. Features include a library of all issues since January 1993 and abstracts since January 1975, a full-text search capacity, and a personal archive for saving articles and search results of interest. All articles can be printed in a format that is virtually identical to that of the typeset pages. Beginning 6 months after publication, the full text of all Original Articles and Special Articles is available free to nonsubscribers.