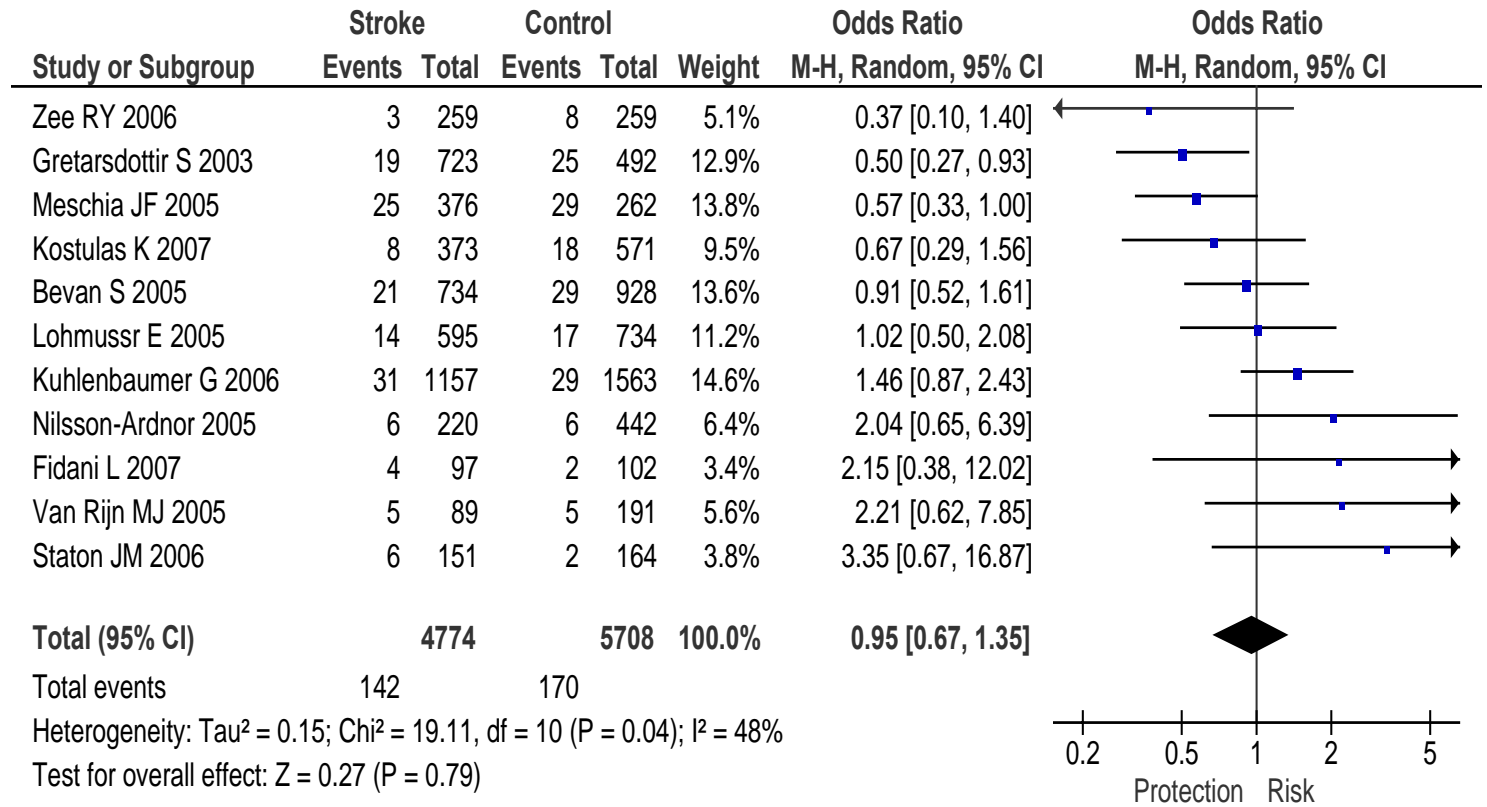


Supplementary Fig. 1

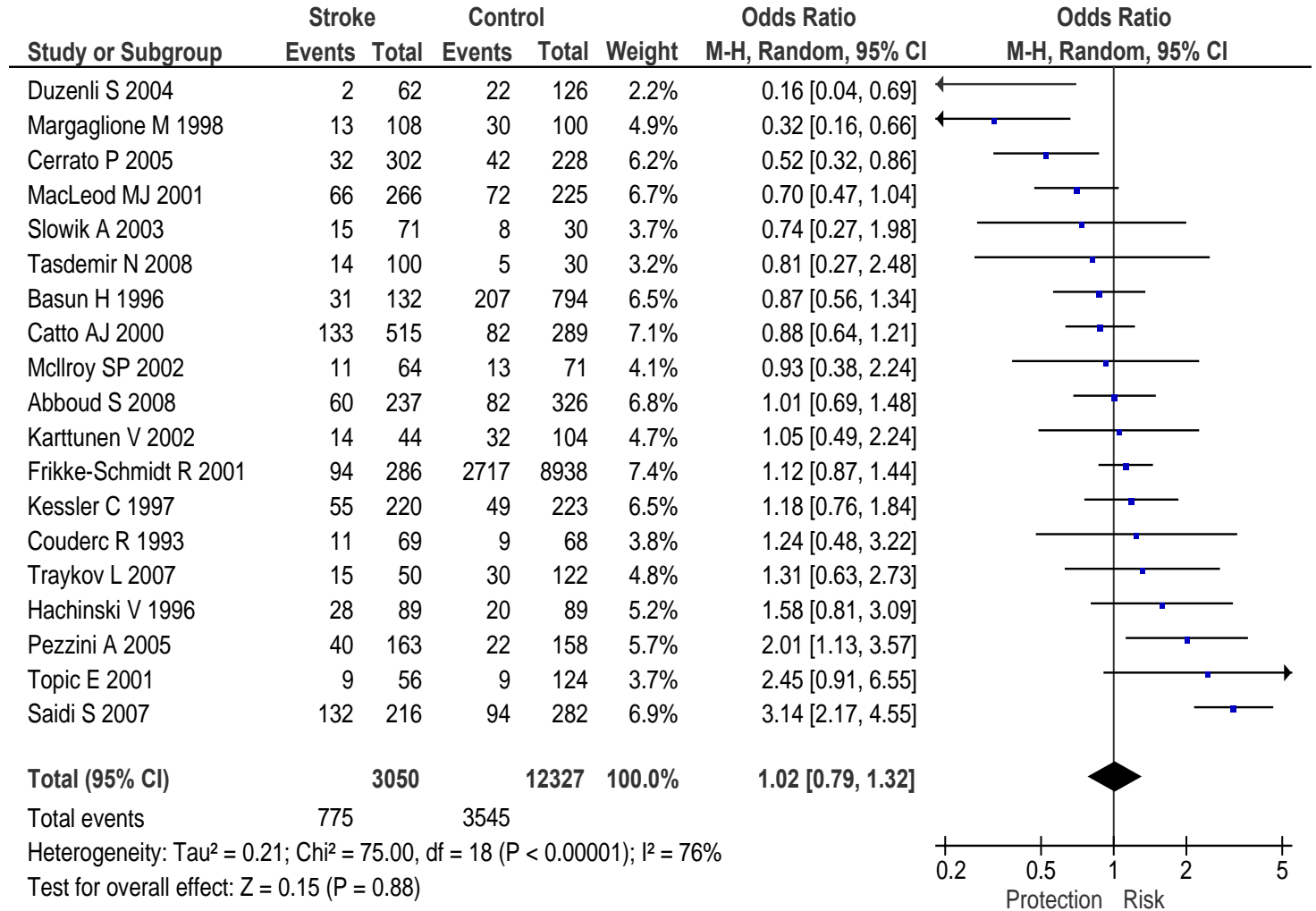
Phosphodiesterase 4D (PDE 4D SNP45*) AA vs G+



* Negative results were similarly found for PDE 4D polymorphisms SNP 26, 56, 83, 87, 89 (i.e. those for which data on >1000 pooled cases exist); using dominant or recessive genetic models for all.

Supplementary Fig. 2

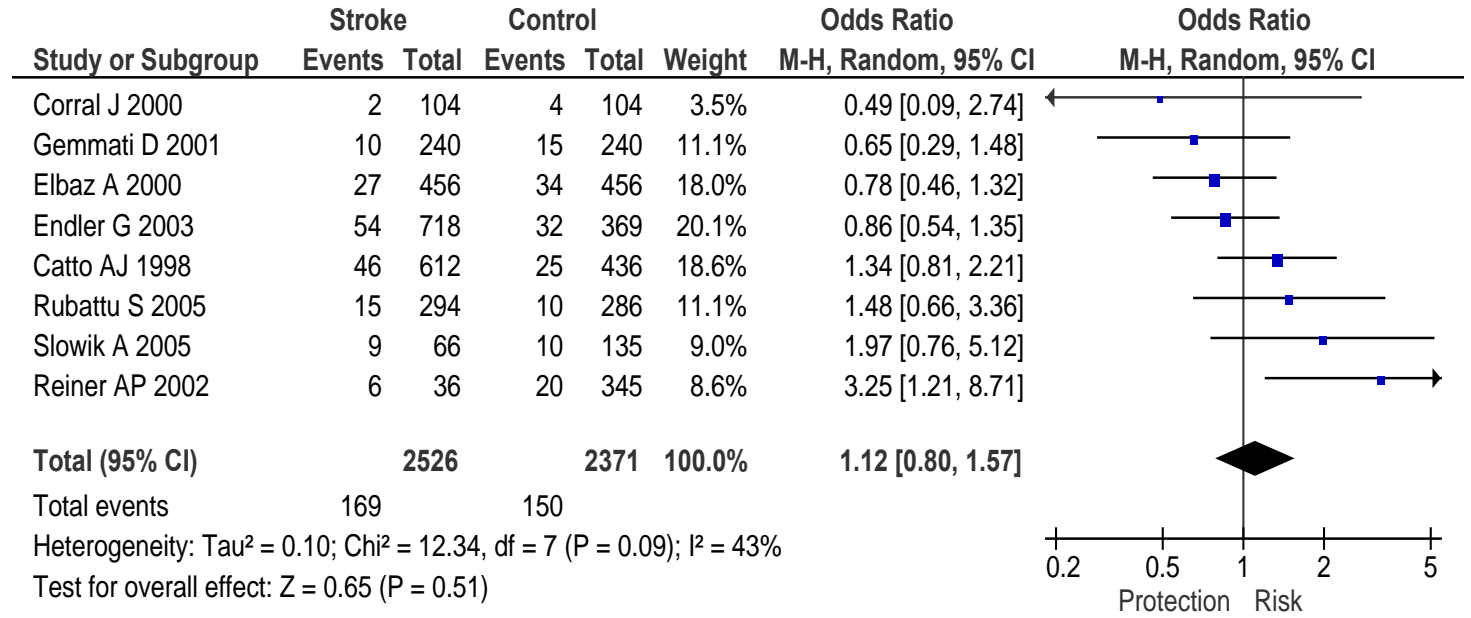
Apolipoprotein E (Apo E4) E4 vs not E4 allele*



* Negative results were similarly found for other Apo E genetic models

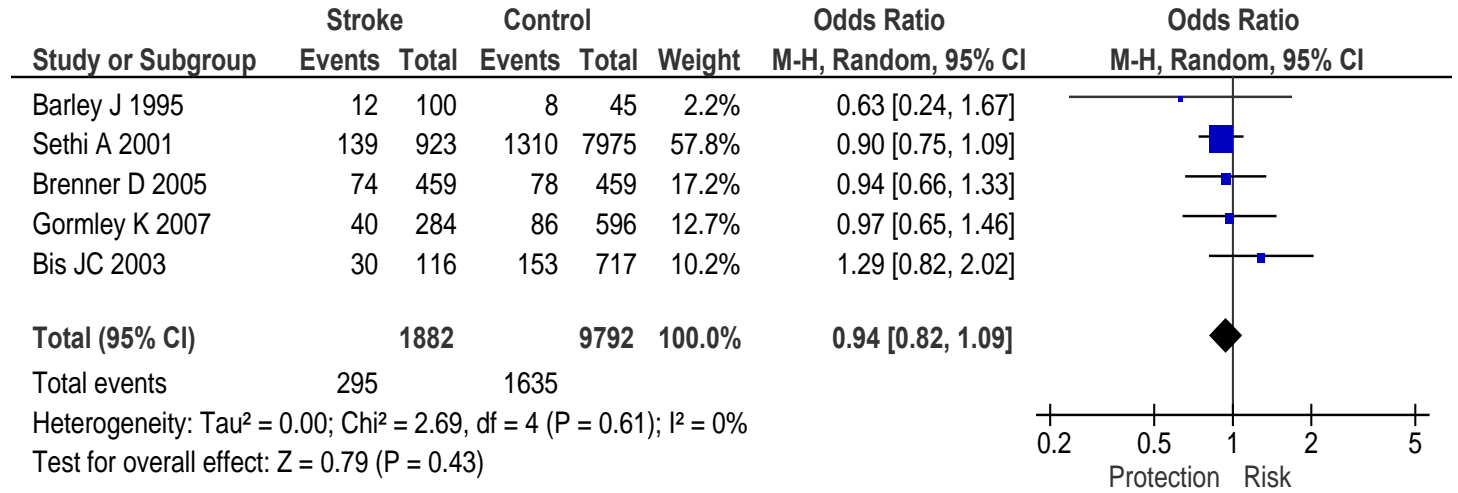
Supplementary Fig. 3

Factor XIII
(Val34Leu)
LeuLeu vs Val+



Supplementary Fig. 4

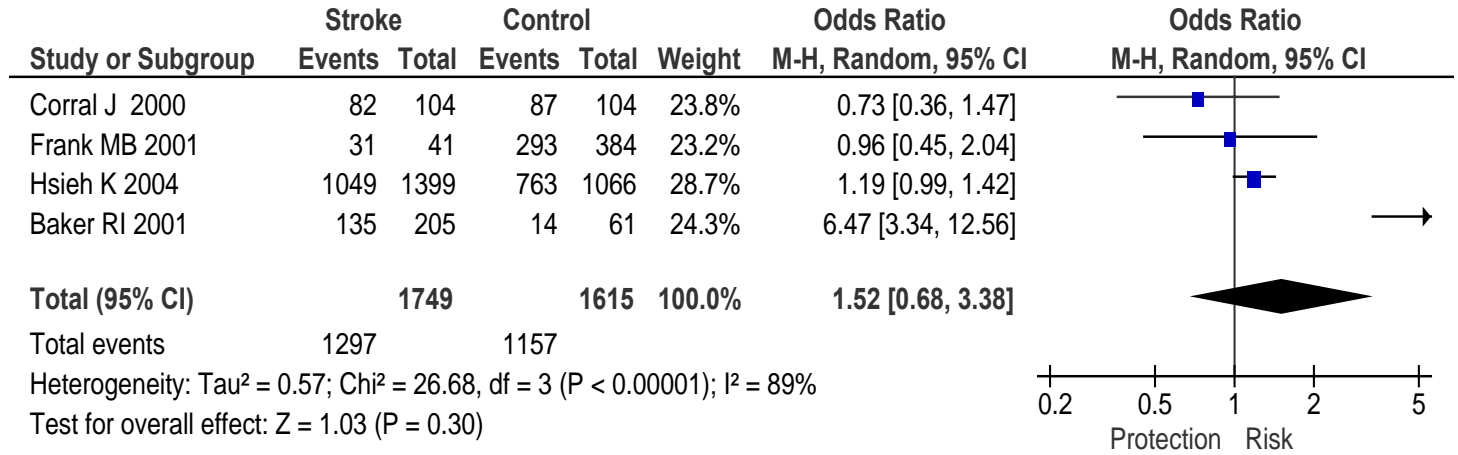
Angiotensinogen (M235T) TT vs M+



* Negative results were similarly found for Angiotensinogen T147M polymorphism. MM vs T+: OR=0.85 (95% CIs: 0.50- 1.43).

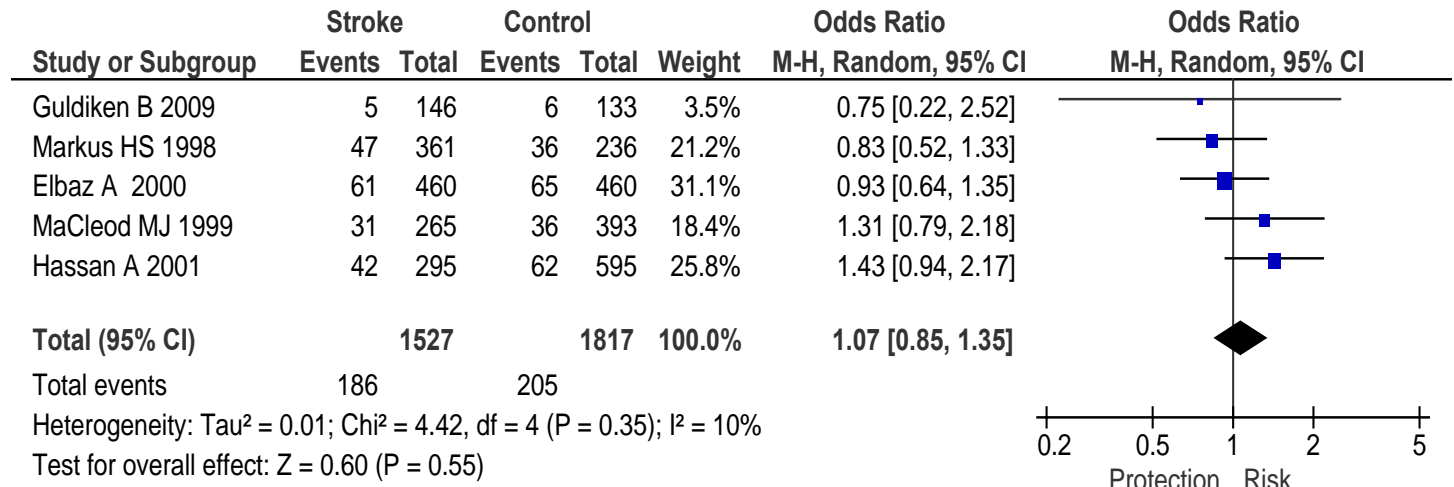
Supplementary Fig. 5

Glycoprotein 1b- α (Kozak sequence TT) TT vs C+



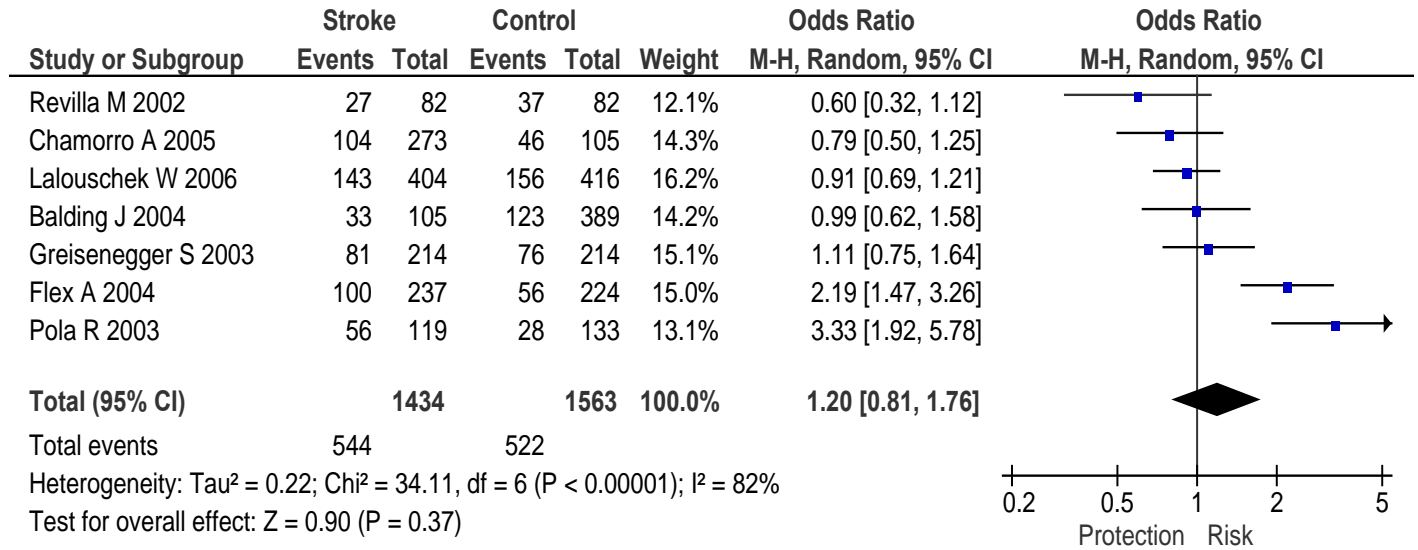
Supplementary Fig. 6

eNOS
(G894T)
AspAsp vs Glu+



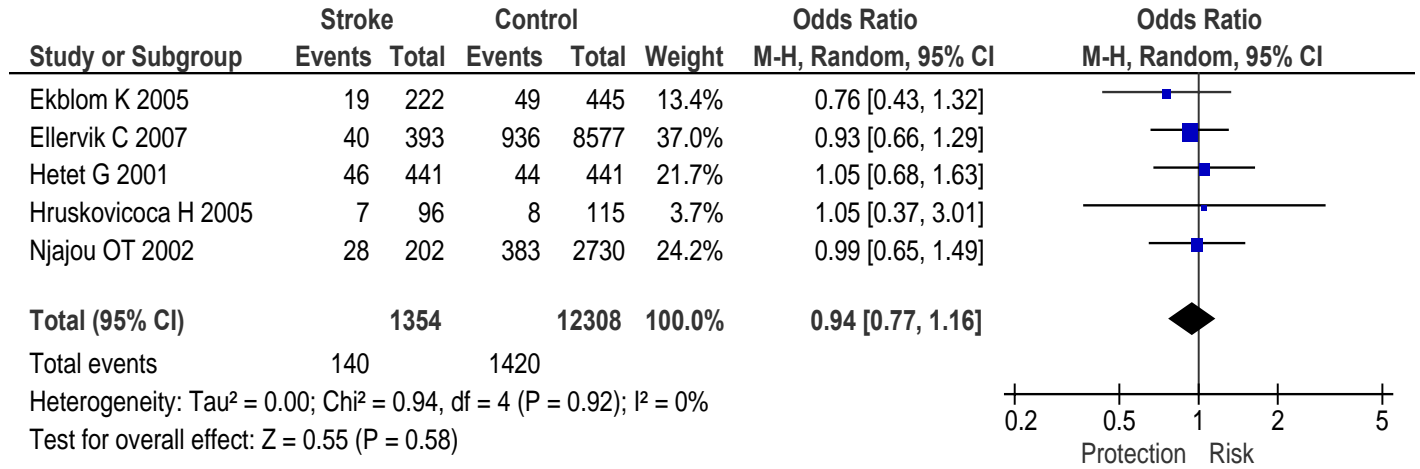
Supplementary Fig. 7

IL-6
(G174C)
GG vs C+



Supplementary Fig. 8

HFE
(C282Y*)
Y+ vs CC



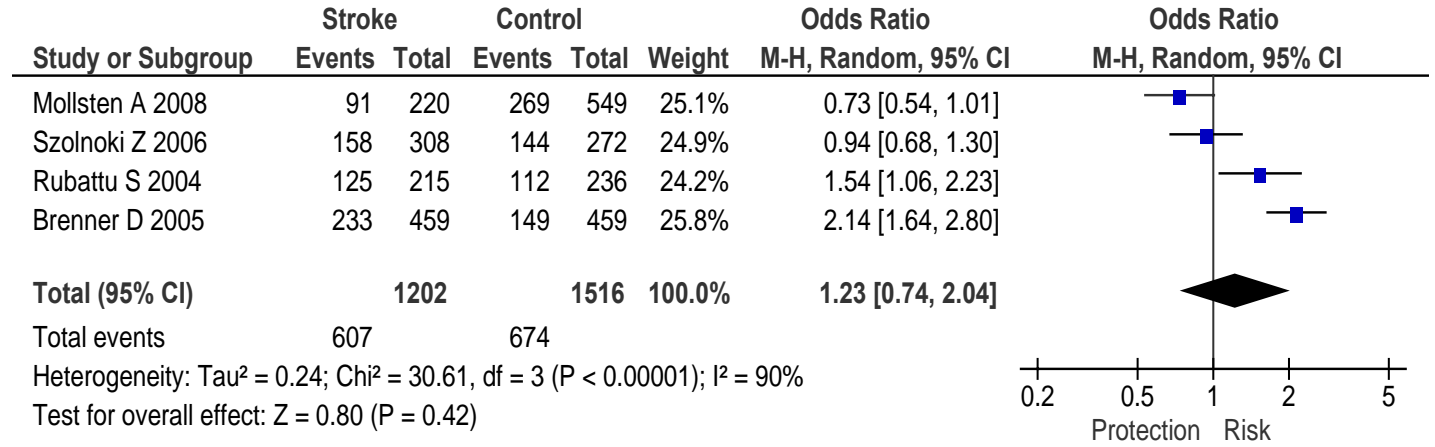
* Negative results were similarly found for HFE polymorphism H63D: D+ VS HH: OR=1.08 (95% CIs: 0.94 - 1.25); 1344 cases; 12296 controls.

Supplementary Fig. 9

Angiotensin Receptor

(A1166C)

C+ vs AA



Supplementary Fig. 10

**Factor VII
(R353Q)
Q+ vs RR**

