

LONDON
SCHOOL of
HYGIENE
& TROPICAL
MEDICINE



Rees, K; Bennett, P; West, R; Davey Smith, G; Ebrahim, S (2004)
Psychological interventions for coronary heart disease. The Cochrane
database of systematic reviews (2). CD002902. ISSN 1469-493X DOI:
<https://doi.org/10.1002/14651858.CD002902.pub2>

Downloaded from: <http://researchonline.lshtm.ac.uk/12719/>

DOI: [10.1002/14651858.CD002902.pub2](https://doi.org/10.1002/14651858.CD002902.pub2)

Usage Guidelines

Please refer to usage guidelines at <http://researchonline.lshtm.ac.uk/policies.html> or alternatively contact researchonline@lshtm.ac.uk.

Available under license: Copyright the author(s)

Psychological interventions for coronary heart disease (Review)

Rees K, Bennett P, West R, Davey Smith G, Ebrahim S



**THE COCHRANE
COLLABORATION®**

This is a reprint of a Cochrane review, prepared and maintained by The Cochrane Collaboration and published in *The Cochrane Library* 2004, Issue 2

<http://www.thecochranelibrary.com>

WILEY

TABLE OF CONTENTS

| | |
|--|----|
| HEADER | 1 |
| ABSTRACT | 1 |
| PLAIN LANGUAGE SUMMARY | 2 |
| BACKGROUND | 2 |
| OBJECTIVES | 3 |
| METHODS | 3 |
| RESULTS | 4 |
| DISCUSSION | 7 |
| AUTHORS' CONCLUSIONS | 8 |
| ACKNOWLEDGEMENTS | 8 |
| REFERENCES | 8 |
| CHARACTERISTICS OF STUDIES | 14 |
| DATA AND ANALYSES | 31 |
| Analysis 1.1. Comparison 1 Any psychological intervention +/- other rehabilitation vs control (usual care/other rehabilitation), Outcome 1 Total Mortality. | 32 |
| Analysis 1.2. Comparison 1 Any psychological intervention +/- other rehabilitation vs control (usual care/other rehabilitation), Outcome 2 Cardiac Mortality. | 33 |
| Analysis 1.3. Comparison 1 Any psychological intervention +/- other rehabilitation vs control (usual care/other rehabilitation), Outcome 3 Non-fatal MI. | 34 |
| Analysis 1.4. Comparison 1 Any psychological intervention +/- other rehabilitation vs control (usual care/other rehabilitation), Outcome 4 Revascularisation (CABG and PTCA combined). | 35 |
| Analysis 1.5. Comparison 1 Any psychological intervention +/- other rehabilitation vs control (usual care/other rehabilitation), Outcome 5 Total Cholesterol. | 36 |
| Analysis 1.6. Comparison 1 Any psychological intervention +/- other rehabilitation vs control (usual care/other rehabilitation), Outcome 6 LDL Cholesterol. | 37 |
| Analysis 1.7. Comparison 1 Any psychological intervention +/- other rehabilitation vs control (usual care/other rehabilitation), Outcome 7 HDL Cholesterol. | 38 |
| Analysis 1.8. Comparison 1 Any psychological intervention +/- other rehabilitation vs control (usual care/other rehabilitation), Outcome 8 Triglycerides. | 39 |
| Analysis 1.9. Comparison 1 Any psychological intervention +/- other rehabilitation vs control (usual care/other rehabilitation), Outcome 9 Systolic Blood Pressure. | 40 |
| Analysis 1.10. Comparison 1 Any psychological intervention +/- other rehabilitation vs control (usual care/other rehabilitation), Outcome 10 Diastolic Blood Pressure. | 41 |
| Analysis 1.11. Comparison 1 Any psychological intervention +/- other rehabilitation vs control (usual care/other rehabilitation), Outcome 11 Smoking. | 42 |
| Analysis 1.12. Comparison 1 Any psychological intervention +/- other rehabilitation vs control (usual care/other rehabilitation), Outcome 12 Anxiety. | 43 |
| Analysis 1.13. Comparison 1 Any psychological intervention +/- other rehabilitation vs control (usual care/other rehabilitation), Outcome 13 Depression. | 44 |
| Analysis 1.14. Comparison 1 Any psychological intervention +/- other rehabilitation vs control (usual care/other rehabilitation), Outcome 14 Psychosocial composite measures. | 45 |
| Analysis 2.1. Comparison 2 Any stress management intervention +/- other rehabilitation vs control (usual care/other rehabilitation), Outcome 1 Total Mortality. | 46 |
| Analysis 2.2. Comparison 2 Any stress management intervention +/- other rehabilitation vs control (usual care/other rehabilitation), Outcome 2 Cardiac Mortality. | 47 |
| Analysis 2.3. Comparison 2 Any stress management intervention +/- other rehabilitation vs control (usual care/other rehabilitation), Outcome 3 Non-fatal MI. | 48 |
| Analysis 2.4. Comparison 2 Any stress management intervention +/- other rehabilitation vs control (usual care/other rehabilitation), Outcome 4 Revascularisation (CABG and PTCA combined). | 49 |
| Analysis 2.5. Comparison 2 Any stress management intervention +/- other rehabilitation vs control (usual care/other rehabilitation), Outcome 5 Total Cholesterol. | 50 |

| | |
|--|----|
| Analysis 2.6. Comparison 2 Any stress management intervention +/- other rehabilitation vs control (usual care/other rehabilitation), Outcome 6 LDL Cholesterol. | 51 |
| Analysis 2.7. Comparison 2 Any stress management intervention +/- other rehabilitation vs control (usual care/other rehabilitation), Outcome 7 HDL Cholesterol. | 51 |
| Analysis 2.8. Comparison 2 Any stress management intervention +/- other rehabilitation vs control (usual care/other rehabilitation), Outcome 8 Triglycerides. | 52 |
| Analysis 2.9. Comparison 2 Any stress management intervention +/- other rehabilitation vs control (usual care/other rehabilitation), Outcome 9 Systolic Blood Pressure. | 53 |
| Analysis 2.10. Comparison 2 Any stress management intervention +/- other rehabilitation vs control (usual care/other rehabilitation), Outcome 10 Diastolic Blood Pressure. | 53 |
| Analysis 2.11. Comparison 2 Any stress management intervention +/- other rehabilitation vs control (usual care/other rehabilitation), Outcome 11 Smoking. | 54 |
| Analysis 2.12. Comparison 2 Any stress management intervention +/- other rehabilitation vs control (usual care/other rehabilitation), Outcome 12 Anxiety. | 55 |
| Analysis 2.13. Comparison 2 Any stress management intervention +/- other rehabilitation vs control (usual care/other rehabilitation), Outcome 13 Depression. | 56 |
| Analysis 2.14. Comparison 2 Any stress management intervention +/- other rehabilitation vs control (usual care/other rehabilitation), Outcome 14 Psychological composite measures. | 57 |
| ADDITIONAL TABLES | 57 |
| WHAT'S NEW | 63 |
| HISTORY | 63 |
| CONTRIBUTIONS OF AUTHORS | 64 |
| DECLARATIONS OF INTEREST | 64 |
| SOURCES OF SUPPORT | 64 |
| NOTES | 64 |
| INDEX TERMS | 64 |

[Intervention Review]

Psychological interventions for coronary heart disease

Karen Rees¹, Paul Bennett², Robert West³, George Davey Smith⁴, Shah Ebrahim⁵

¹Department of Social Medicine, University of Bristol, Bristol, UK. ²Department of Psychology, University of Wales Swansea, Swansea, UK. ³Wales Heart Research Institute, Cardiff, UK. ⁴Department of Social Medicine, University of Bristol, Bristol, UK. ⁵Department of Epidemiology & Population Health, London School of Hygiene & Tropical Medicine, London, UK

Contact address: Karen Rees, Department of Social Medicine, University of Bristol, Whiteladies Road, Bristol, BS3 1AZ, UK. rees_karen@yahoo.co.uk.

Editorial group: Cochrane Heart Group.

Publication status and date: Edited (no change to conclusions), published in Issue 1, 2009.

Review content assessed as up-to-date: 31 January 2004.

Citation: Rees K, Bennett P, West R, Davey Smith G, Ebrahim S. Psychological interventions for coronary heart disease. *Cochrane Database of Systematic Reviews* 2004, Issue 2. Art. No.: CD002902. DOI: 10.1002/14651858.CD002902.pub2.

Copyright © 2009 The Cochrane Collaboration. Published by John Wiley & Sons, Ltd.

ABSTRACT

Background

Psychological interventions can form part of comprehensive cardiac rehabilitation programmes (CCR). These interventions may include stress management interventions, which aim to reduce stress, either as an end in itself or to reduce risk for further cardiac events in patients with heart disease.

Objectives

To determine the effectiveness of psychological interventions, in particular stress management interventions, on mortality and morbidity, psychological measures, quality of life, and modifiable cardiac risk factors, in patients with coronary heart disease (CHD).

Search strategy

We searched CCTR to December 2001 (Issue 4, 2001), MEDLINE 1999 to December 2001 and EMBASE 1998 to the end of 2001, PsychINFO and CINAHL to December 2001. In addition, searches of reference lists of papers were made and expert advice was sought.

Selection criteria

RCTs of non-pharmacological psychological interventions, administered by trained staff, either single modality interventions or a part of CCR with minimum follow up of 6 months. Adults of all ages with CHD (prior myocardial infarction, coronary artery bypass graft or percutaneous transluminal coronary angioplasty, angina pectoris or coronary artery disease defined by angiography). Stress management (SM) trials were identified and reported in combination with other psychological interventions and separately.

Data collection and analysis

Studies were selected, and data were abstracted, independently by two reviewers. Authors were contacted where possible to obtain missing information.

Main results

Thirty six trials with 12,841 patients were included. Of these, 18 (5242 patients) were SM trials. Quality of many trials was poor with the majority not reporting adequate concealment of allocation, and only 6 blinded outcome assessors. Combining the results of all trials showed no strong evidence of effect on total or cardiac mortality, or revascularisation. There was a reduction in the number of non-fatal reinfarctions in the intervention group (OR 0.78 (0.67, 0.90), but the two largest trials (with 4809 patients randomized)

Psychological interventions for coronary heart disease (Review)

Copyright © 2009 The Cochrane Collaboration. Published by John Wiley & Sons, Ltd.

1

were null for this outcome, and there was statistical evidence of publication bias. Similar results were seen for the SM subgroup of trials. Provision of any psychological intervention or SM intervention caused small reductions in anxiety and depression. Few trials reported modifiable cardiac risk factors or quality of life.

Authors' conclusions

Overall psychological interventions showed no evidence of effect on total or cardiac mortality, but did show small reductions in anxiety and depression in patients with CHD. Similar results were seen for SM interventions when considered separately. However, the poor quality of trials, considerable heterogeneity observed between trials and evidence of significant publication bias make the pooled finding of a reduction in non-fatal myocardial infarction insecure.

PLAIN LANGUAGE SUMMARY

It is unclear whether stress management and other forms of psychological intervention for people with heart disease reduces heart attacks, anxiety or depression, but it is thought that their inclusion in rehabilitation programmes may help

Stress management training aims to help people cope with stress. It is often included in rehabilitation for people following heart attack or cardiac surgery. The aim is to reduce stress, often apparent through high levels of anxiety and depression, and prevent further heart attacks. The review found there are not enough trials to show whether stress management training is effective on its own. When combined with other education and exercise strategies in rehabilitation, or given in the context of other psychological interventions, there was a reduction in anxiety and depression but no strong evidence of any effect on a reduction in heart attacks.

BACKGROUND

Coronary heart disease is the single leading cause of death for both men and women in developed countries, for example in England accounting for one in four male deaths and one in six female deaths (BHF 2003). Many, but by no means all (Davidson 1995), of the two thirds of patients who survive their myocardial infarction (MI) or who have cardiac surgery, will be offered some form of cardiac rehabilitation. The nature of the intervention available differs between centres, with the majority involving a combination of a short-term exercise programme and health education (Maes 1992).

Less frequently available as part of cardiac rehabilitation and secondary prevention are psychological interventions aimed at reducing risk factors and increasing effective coping. These interventions are numerous and often ill-defined, and include interventions such as risk factor counseling and psychotherapy. In contrast, interventions which include some form of stress management are well defined, are skills-based, and aim to teach patients to cope more effectively with stress. They typically involve the use of relaxation either alone or, potentially more powerfully, in combination with a variety of cognitive or behavioural strategies (Meichenbaum 1985), including problem-solving skills, and cognitive self-instruction or restructuring techniques.

Research focusing on the effectiveness of stress management interventions for coronary heart disease has focused on two research questions. Firstly, does the use of stress management techniques reduce the stress or distress associated with a cardiac event? Secondly, do these procedures reduce the risk of further clinical events? The latter hypothesis is premised on the assumption that stress contributes to risk for further events either directly or as a function of potentially stress-related behaviours such as smoking (Parrott 1995; Todd 1996). Another series of studies have focused on the use of stress management procedures in reducing the degree to which patients express Type A behaviour or hostility (Burrell 1986; Friedman 1986), a form of behaviour thought to be associated with coronary heart disease (Bennett 1990).

A narrative review of the effectiveness of these procedures focusing on the use of stress management procedures in post-MI patients concluded that the majority of programmes targeted at reducing Type A behaviours, or which taught stress management techniques, may have been effective in reducing psychological distress and increasing effective coping, although frequently only in the short-term (Bennett 1994). However, there was at that time little evidence that such changes afforded benefits in terms of coronary heart disease mortality or morbidity. Several overviews of studies evaluating the effectiveness of psychological interventions on clinical outcome have been published more recently (Dusseldorp

1999; Linden 1996; West 1995). Each overview differs in its selection of studies depending on publication date and the different definitions of the psychological interventions under evaluation. The earliest overview found a beneficial effect of the intervention on mortality, but also reported significant heterogeneity between trials and cautioned against the significance of pooling small studies (West 1995). Similarly, Linden and colleagues (Linden 1996) found that patients who did not enter a psychosocial programme were significantly more likely to experience a death or a cardiac recurrence in the two years following their infarction than those who did. After this, any protective effect was weaker. A significant reduction in both cardiac mortality and recurrence of MI was also reported in the most recent meta-analysis (Dusseldorp 1999). However, none of these reviews were fully systematic in their coverage, and some included non-randomised studies. In addition, these reviews did not disaggregate differing psychosocial interventions such as counseling (Dracup 1984), case-management (DeBusk 1994), risk behaviour education (including advice on smoking and diet) (Horlick 1984; Karvetti 1981) and what they term stress management trials (Gillis 1993; Mitsibounas 1992) in their analyses. Accordingly, these data provide no definitive measure of the effectiveness of stress management procedures in patients with coronary heart disease, and therefore a further systematic review is indicated addressing the above issues.

OBJECTIVES

To determine the effectiveness of psychological interventions, and in particular stress management training, in patients with CHD. Principal outcome measures included CHD-related morbidity and mortality, measures of psychological well-being, and modifiable cardiac risk factors.

METHODS

Criteria for considering studies for this review

Types of studies

Randomised controlled trials with parallel group design.

Types of participants

Adults of all ages with CHD. Patients included those who had experienced a myocardial infarction (MI), a revascularisation procedure (coronary artery bypass grafting (CABG) or percutaneous transluminal coronary angioplasty (PTCA)), those with angina, or angiographically defined CHD.

Types of interventions

All non-pharmacological psychological interventions delivered by health care workers with specific training in these techniques were considered. Trials were only considered where the comparison group was usual care/no intervention. Usual care could include other components of cardiac rehabilitation (e.g. exercise, health education) only if the intervention was usual care plus the psychological intervention. Trials were only considered where the follow up was 6 months or more following the start of the intervention. Trials reporting the use of stress management procedures were identified. Stress management was defined as the use of specific cognitive behavioural strategies used to help the patient reduce, or manage, their stress. These included learning relaxation, the use of cognitive techniques such as self-instruction training (Meichenbaum 1985) and cognitive challenge (e.g. Beck 1997), and/or consideration of specific coping strategies to be used at times of stress. Less specific therapeutic approaches including counseling, psychodynamic, or educational interventions were excluded from this definition, as were self-management techniques used to change risk factors such as smoking and low levels of exercise that were not specifically targeted at stress reduction. The cognitive behavioural treatment of other aversive mood states including anger and depression are also excluded. Stress management trials were reported in combination with other psychological interventions and also reported separately.

Types of outcome measures

Primary outcomes

All-cause and CHD-related mortality

MI, CABG, PTCA

Anxiety, Depression, measures of stress and Type A behaviour/hostility

Secondary outcomes

Modifiable cardiac risk factors (blood pressure and serum cholesterol levels, smoking)

Health related quality of life

Search methods for identification of studies

The Cochrane Controlled Trials Register (CCTR) was searched to December 2001 (Issue 4 2001) using the search strategies outlined below. This was updated by searching MEDLINE 1999 to the end of 2001 on Ovid using a standard RCT filter (Dickersin 1994) and EMBASE 1998 to the end of 2001 using an EMBASE RCT filter (Lefebvre 1996). PsychINFO and CINAHL were also searched from the earliest date available to December 2001 using the search terms outlined below. In addition, searches of reference lists of papers were made and expert advice was sought. No language restrictions were applied.

CCTR search strategy

MYOCARDIAL-ISCHEMIA*:ME

CORONARY-ARTERY-BYPASS*:ME
 (ISCHEMI* near HEART)
 (ISCHAEMI* near HEART)
 (CORONARY near DISEASE*)
 (CORONARY near BYPASS)
 (CORONARY near THROMBO*)
 (CORONARY near ANGIOPLAST)
 (CORONARY near ANGIOPLAST*)
 (MYOCARD* near ISCHEMI*)
 (MYOCARD* near ISCHAEMI*)
 (MYOCARD* near INFARCT*)
 (HEART near INFARCT*)
 ANGINA
 (((((((((((((#1 or #2) or #3) or #4) or #5) or #6) or #7) or #8) or #9) or #10) or #11) or #12) or #13) or #14)
 REHABILITATION*:ME
 REHABILITAT*
 PSYCHOTHERAPY*:ME
 COUNSELING*:ME
 RELAXATION-TECHNIQUES*:ME
 PSYCHOTHERAP*
 COUNSELING
 COUNSELLING
 RELAX*
 (BEHAVIOR* near MODIF*)
 (BEHAVIOUR* near MODIF*)
 (BEHAVIOR* near THERAP*)
 (BEHAVIOUR* near THERAP*)
 (COGNITIVE* near THERAP*)
 (STRESS near MANAGE*)
 MEDITATION*:ME
 MEDITAT*
 ANXIETY:ME
 (ANXIETY near MANAGE*)
 DISTRESS*
 PSYCHOPATHOLOGY*:ME
 PSYCHOPATHOL*
 AUTOGENIC-TRAINING*:ME
 AUTOGENIC*
 HEALTH-EDUCATION*:ME
 (HEALTH near EDUCAT*)
 (PATIENT near EDUCAT*)
 (SELF near MANAGE*)
 PSYCHOEDUCAT*
 (((((((((((((((((((((((((((((#15 or #16) or #17) or #18) or #19) or #20) or #21) or #22) or #23) or #24) or #25) or #26) or #27) or #28) or #29) or #30) or #31) or #32) or #33) or #34) or #35) or #36) or #37) or #38) or #39) or #40) or #41) or #42) or #43) or #44)
 (#45 and #46)

Data collection and analysis

From the searching, titles and abstracts were examined by two reviewers (SE, PB or KR), potentially relevant references were then retrieved. Two reviewers (KR, PB) then independently selected trials to be included in the review, by the use of a 7-question inclusion/exclusion form. In all cases disagreements about any study inclusions have been resolved by consensus among the authors and a third reviewer was consulted if disagreement persisted. Once studies had been formally included in the review, data were abstracted independently by two reviewers (KR, PB), and chief investigators were contacted where necessary to provide additional information. Trials included in the review were then divided into those reporting a stress management intervention determined from the reported methods section, and other psychological interventions. Agreement between co-reviewers was sought on what constituted a stress management intervention.

In addition to study outcome data, the quality of trials was assessed independently in terms of concealment of allocation, losses to follow up and blind assessment of outcomes. Data concerning patient characteristics; age, sex, type of CHD, identified levels of psychopathology as selection criteria, and details of the intervention, and length of follow up, were also collected as stated a priori with the intention of performing stratified analysis of the data using meta-regression.

Dichotomous outcomes for each study have been expressed as odds ratios and 95% confidence intervals (CI). Continuous variables have been expressed as the mean change from baseline to follow up, and the standard deviation difference from baseline to follow up for each comparison group. Where standard deviation differences have not been reported in the source papers, allowance has been made for within patient correlation from baseline to follow up measurements by using the correlation coefficient between the two (Cochrane Heart Group; Follmann 1992). A weighted mean difference (WMD) or standardised mean difference (SMD) and 95% CI have been calculated for each study. Data from each study were pooled as appropriate using a fixed effect model, except where substantial heterogeneity existed according to the Z statistic, and a random effects model was used (where a random effects model was used this is indicated in parentheses). For outcomes where there was insufficient data or where it was inappropriate to combine studies statistically, a qualitative overview is presented. Sensitivity analyses were carried out, excluding studies of low methodological quality.

RESULTS

Description of studies

See: [Characteristics of included studies](#); [Characteristics of excluded studies](#); [Characteristics of ongoing studies](#).

From the searching, 6535 studies were found, the title and abstracts of these were screened and 331 went forward for formal inclusion or exclusion. 36 trials met the inclusion criteria with 12841 patients randomised. Of these 36 trials, 15 report a psychological intervention in isolation, and 20 report a psychological intervention plus other rehabilitation interventions. For the majority of trials the comparison group was usual medical care as defined in the paper; 6 trials fell into the category of psychological intervention plus other rehabilitation intervention versus other rehabilitation intervention.

Eighteen of the 36 included trials evaluated stress management interventions as determined from the methods reported in the paper, with 5242 patients randomised. Of these 18 trials, 7 report a stress management intervention in isolation, and 11 report a stress management intervention plus other rehabilitation interventions. Details of the studies included in the review are shown in the table of characteristics of included studies. Reasons for exclusion for the majority of studies included study design, primary rather than secondary prevention programmes, and the follow up period being less than 6 months. Details and reasons for exclusion for the studies which most closely missed the strict inclusion criteria are presented in the table of excluded studies.

The majority of included trials studied CHD patients with no identified levels of psychopathology prior to randomisation. Four trials did however use this as an inclusion criteria ([Black](#); [Brown](#); [ENRICH](#); [Stern](#)), where thresholds were derived from the Global Severity Index of the Symptom Checklist 90 revised (greater than 63 and 70 respectively for [Black](#) and [Brown](#)), the Beck depression scale (greater than 13 - [Brown](#)), the Taylor Manifest Anxiety Scale and Zung Depression Scale (greater than 19 and 40 respectively - [Stern](#)), and the Hamilton rating scale for depression ([HAM-D](#); [ENRICH](#)). One study had more than one psychological intervention group ([Johnston](#)). In this case, the intervention group was taken as the inpatient programme and not the extended programme as the latter was added purely as a comparison to the former, and not to usual medical care.

Risk of bias in included studies

The methodological quality of the included studies are presented in [Table 1](#). The methodological quality of trials in terms of the method of randomisation, allocation concealment, blinding of outcome assessors and losses to follow up, is as reported in the papers. For the majority of studies, both the method of randomisation, and method of allocation concealment were unclear. Several studies used block randomisation where the unit of randomisation was the ward for example, to prevent contamination between the intervention and control groups ([Burell](#); [Elderen](#); [Ibrahim](#); [Johnston](#); [Oldenburg 1985](#); [Oldenburg 1995](#); [Stern](#)). For 4 of these 6 studies, the method of allocation concealment was not

optimal, where allocation was alternate, based on days of the week, or date of admission ([Ibrahim](#); [Johnston](#); [Oldenburg 1985](#); [Oldenburg 1995](#)). Only 6/36 studies report that outcome assessors were blind to group allocation. Losses to follow up varied from none to 63%. Using an arbitrary cut-off of 20%, 8/36 studies reported a greater than 20% loss to follow up.

Effects of interventions

All psychological interventions

Whether a psychological intervention contained a stress management component was determined from the reported methods section of published papers and therefore could not be used as a robust inclusion criteria as we were limited by the description provided by the investigators. For this reason, all trials identified reporting a psychological intervention have been examined, and results are compared with the subgroup we identified as being stress management trials. Results are presented for all trials - any psychological intervention +/- other rehabilitation versus usual care/other rehabilitation.

Clinical events

When considering all included trials reporting any psychological intervention, there was no strong evidence of any effect of the intervention on total mortality in the 22 trials (10634 patients) reporting this as an outcome (pooled effect estimate OR 0.93, 95% CI 0.81 to 1.06). Cardiac mortality was reported in 11 trials (7544 patients) where similarly there was no strong evidence of a reduction in the intervention group (OR 0.86, 95% CI 0.72 to 1.03).

There was a statistically significant 22% reduction in non-fatal myocardial infarction in the intervention group in the 18 trials (10200 patients) reporting this outcome (OR 0.78 95% CI 0.67 to 0.90).

Revascularisation was reported as the combined outcome of CABG and PTCA. The pooled effect estimate for this outcome for the 15 trials (8368 patients) reporting it was OR 0.87 95% CI (0.67 to 1.13 - random effects model).

Significant heterogeneity of effects were seen for some of these clinical outcomes, and there was evidence of publication bias for the non-fatal myocardial infarction findings (see below). The evidence was dominated by two large trials ([ENRICH](#), [Jones](#)), both of which produced null findings for all clinical outcomes.

Modifiable cardiac risk factors

Total cholesterol was measured in only 9 trials overall (1525 patients) where a statistically significant reduction was seen with the intervention (WMD -0.27 (-0.55 to 0.0) random effects model). No significant results were seen for LDL or HDL cholesterol, or triglycerides.

Blood pressure was reported in only 5 trials (805 patients) where significant heterogeneity was seen between trials, showing favourable effects in 3 trials, and harmful effects in 2 trials. Similarly, heterogeneity was seen between trials reporting smoking as

an outcome (8 trials, 3690 patients randomised), with the largest trial containing over 60% of the weight in the meta-analysis showing a null effect (Jones).

Psychological outcomes

Anxiety was measured in only 9 trials (2756 patients) overall using a number of different measures. Pooled results are presented as standardised mean differences (SMD) to take account of the number of different scales used. A small but statistically significant reduction in anxiety with the intervention was seen, where the SMD was -0.08 (-0.16 to -0.01).

Depression was measured in 11 trials overall (4535 patients), again using a number of different measures. There was significant heterogeneity between trials. Across all trials there was a significant reduction in depression (SMD -0.3 (-0.48 to -0.13) random effects model).

Several studies reported composite measures for anxiety, depression and mental health, and these form a separate category. For the 5 trials overall (347 patients) there is a significant beneficial reduction (SMD -0.22 (-0.44 to -0.01).

Publication bias

Evidence of publication bias using both total mortality and non-fatal MI as outcomes for any psychological intervention was examined both visually in the form of funnel plots, and statistically (Egger 1997). There was evidence of significant publication bias for non-fatal reinfarction (Egger test, bias coefficient = -0.98, $p = 0.03$), but not for total mortality (Egger test, bias coefficient = 0.3, $p = 0.37$).

Stress management interventions

Results for the 18 trials which were identified as those including some form of stress management, were divided into stress management intervention versus usual care, stress management intervention plus other rehabilitation versus usual care and stress management intervention plus other rehabilitation versus other rehabilitation, as reported in the source papers. However, the number of trials in each category were small and hence pooled findings were underpowered and represent multiple comparisons increasing the risk of false positive findings. Results have therefore been presented as those 18 trials with any stress management intervention +/- other rehabilitation versus usual care/other rehabilitation.

Clinical Events

When considering all stress management trials, there was no strong evidence of effect of the intervention on total mortality in the 10 trials (3425 patients) reporting this as an outcome (OR 0.88, 95% CI 0.67 to 1.15). Cardiac mortality was reported in 4 trials where weak evidence of a reduction in the number of deaths was seen in the intervention group (pooled effect estimate OR 0.62, 95% CI (0.38 to 0.99)), and of a 31% reduction in non-fatal myocardial infarction in the intervention group in the 8 trials (3990 patients) reporting this outcome (OR 0.69 95% CI 0.52 to 0.92). One of these 8 trials recruited patients with identified levels of psychopathology prior to randomisation (Stern). Only one of these 8 trials examined the effects of a stress management intervention

without the influence of other rehabilitation interventions (Jones). Revascularisation was reported as the combined outcome of CABG and PTCA. The pooled effect estimate for this outcome for the 7 trials (3025 patients) reporting it was OR 0.82, 95% CI (0.42 to 1.62 - random effects model).

Modifiable Risk Factors

Total cholesterol was measured in only 4 trials overall (634 patients) where no effect of the intervention was seen (WMD 0.02 (-0.12 to 0.15)). Similar results were found for LDL and HDL cholesterol, and triglycerides.

Blood pressure was reported in only 2 trials (468 patients) which showed significant heterogeneity and no overall effect of the intervention was seen.

The number of smokers at follow-up were reported in 3 trials (2472 patients), and all had a similar baseline prevalence in the intervention and control groups. There was no evidence of any benefit of intervention (OR 1.03, 95% CI (0.85, 1.24))

Health Related Quality of Life (HRQoL)

HRQoL was reported in 5 trials overall using several different instruments. Results are reported qualitatively in Table 2. Two trials showed benefit of the intervention, where Johnston found significant effects on QoL using the Functional Limitations Profile, and Oldenburg 1985 found improvements in 1 of 4 factors on the Heart Attack Inventory identified from Principal Components Analysis (psychosocial dysfunction factor).

Psychological outcomes

Anxiety was measured in 7 trials overall using a number of different measures. These included the Taylor Manifest Anxiety Scale (Burgess; Stern; Taylor 1953), Spielberger State-Trait Anxiety Inventory (HofmanBang; Oldenburg 1995; STAI 1970), Hospital Anxiety and Depression Scale (HAD 1983; Johnston; Lewin), and the Personal Disturbance Scale (Jones) devised by Bedford, Foulds and Sheffield (Bedford 1976). Pooled results are presented as standardised mean differences (SMD) to take account of the number of different scales used. For the 7 trials overall (2651 patients) there was only weak evidence of a small decrease in anxiety with the intervention (SMD -0.07 (-0.15, 0.01)).

Depression was measured in 8 trials overall again using a number of different measures. These included the Zung depression scale (Burgess; Stern; Zung 1965), the depression score from the symptom checklist 90 revised (SCL-90-R) (Black; SCL-90-R), Hospital Anxiety and Depression Scale (Johnston, Lewin), Beck Depression Inventory (Beck 1961; HofmanBang), the Personal Disturbance Scale of Bedford et al (Jones), and the Centre for Epidemiological Studies Depression Scale (CES-D) (CES-D 1977; Toobert). Pooled results are presented as SMD. For the 8 trials overall (2642 patients) there was evidence of a reduction in depression scores in the intervention group (SMD -0.32 (-0.56 to -0.08) - random effects model). Results are dominated by one large trial (Jones) which showed a null effect, and hence significant heterogeneity between studies.

Several studies reported composite measures for anxiety, depres-

sion and mental health. Scales included the Global Severity Index of the SCL-90R (Black, Brown), the depression, anxiety and somatization scales of the SCL-90R (Oldenburg 1995), Impact of events scale (Burgess; Horowitz 1979) and the mental health component of the medical outcomes study short form SF36 (MOS-36) (MOS SF36; Toobert). Pooled results are presented as SMD. For the 5 trials overall (347 patients) there was evidence of a reduction (SMD -0.22 (-0.44 to -0.01)).

Other psychological outcomes measured included stress and Type A attitudes. Results are presented qualitatively in Table 3. Perceived stress was measured in 2 trials, where one showed no effect of the intervention (Toobert) and the other showed a significant reduction with the intervention (Gallacher). The total Derogatis Stress Profile scores (Derogatis 1987) were also significantly reduced in the intervention group in this latter trial (Gallacher). Type A attitudes were measured in two trials. Differences with the intervention were shown in only one of several measures in one trial (HofmanBang), but the Recurrent Coronary Prevention Project (RCCP), showed significant reductions in Type A behaviour when assessed by video taped clinical interview and participant questionnaire.

DISCUSSION

The current systematic review differs from those previously conducted in this area (Dusseldorp 1999; Linden 1996; West 1995) in a number of respects. The search strategy used was more extensive with no language restrictions and includes more recent trials than previous reviews. We have also attempted to identify those trials evaluating some form of stress management from other psychological interventions. To avoid selection bias which may be introduced when using reported details of the interventions as part of the inclusion criteria, we have attempted to identify all trials reporting psychological interventions, and then identify from these a subgroup of stress management trials to compare the overall effects. Stress management was defined as training in the use of core stress management techniques: relaxation alone or in combination with cognitive strategies and/or problem solving skills. Interventions including discussion of issues or venting emotions were not included in this subgroup.

The trials identified for inclusion within this review were extremely heterogeneous. Within the stress management subgroup, some trials evaluated stress management as a single intervention, and others evaluated stress management as part of a comprehensive cardiac rehabilitation programme (CCR). For the majority of trials the control group was usual medical care. However, we also included some trials where the control group was another component of CCR if it also formed part of the non-stress management component of the intervention. Most trials recruited patients without identified levels of psychopathology prior to randomisation. Due

to the small number of trials reporting particular outcomes for each of these above categories, results have been presented as the combined result for all trials identified as having a stress management intervention. Whilst presenting the data in this way allows us to estimate an overall summary effect estimate, the effectiveness of the stress management intervention per se is difficult to separate from the effectiveness of other rehabilitation interventions, a problem in common with all evaluations of complex health-care interventions. While stress management may be considered more appropriate for post-MI patients due to the proposed aetiological links between stress and coronary heart disease (Stansfeld 2002), such observational association evidence is prone to bias and a range of interpretations (Macleod 2002). Similar observational evidence also supports an association between depressed mood and anxiety and coronary heart disease (Barefoot 1996; Ford 1998; Hemingway 1999). It may therefore be inferred that both stress management and more general psychological interventions aiming to reduce depression and anxiety would be helpful in reducing recurrent cardiovascular events.

Other sources of heterogeneity include patient type, with some patients receiving the intervention post MI, some post surgery, and include also patients with angina and chronic CHD. Similarly, trial quality, the type and intensity of intervention, and length of follow up differ between trials. It was our intention to assess these areas of heterogeneity by performing stratified analysis of the data with meta-regression, however, this was problematic due to limited information, particularly with regard to trial quality, and also because of the relatively small number of trials.

Overall, results from the stress management subgroup are consistent with those for all psychological interventions. The primary outcomes of interest were clinical events and psychological variables. We could find no evidence of a reduction in total mortality in trials of all psychological interventions, or those reporting the effects of stress management. There was some evidence of a reduction in non-fatal reinfarction in the intervention group when considering all psychological trials and stress management interventions. However, for all psychological interventions there was evidence of significant publication bias for this outcome due to the two largest trials representing nearly 50% of the weight in the meta-analysis showing no evidence of effect. The fact that differences in the effect size were seen between total mortality and non-fatal reinfarction also suggests that there may be ascertainment or measurement bias associated with non-fatal events which may have arisen due to failure to blind outcome assessors and the low quality of reporting of concealment of allocation.

Psychological outcomes were reported in relatively few trials. Results have been divided into anxiety, depression, composite psychological outcomes (reporting anxiety and depression together, and/or mental health), and others (stress and type A behaviour). Results have been expressed as standardised mean differences to take account of the number of different scales used. Small but

significant beneficial effects were seen on anxiety for both all psychological interventions, and the stress management subgroup. A similar pattern was seen for composite psychological outcomes. Depression was significantly reduced in both all psychological interventions and the stress management subgroup overall. Significant heterogeneity is seen for this outcome, due to the large trial reporting a single modality stress management intervention which showed a null effect (Jones). Cautious interpretation of the effect of stress management interventions on depression is therefore required.

Very few trials reported modifiable cardiac risk factors (lipid levels, blood pressure, smoking), and whilst there were no suggestions for an effect of stress management interventions, no conclusions can be drawn.

There was substantial heterogeneity between trials included in this review. Much of this is attributable to the findings of the two large, well-conducted trials (Jones, ENRICH) which produced null findings. Differences in findings in this review and those of previous reviews are mostly attributable to differences in trial inclusion, and in particular, inclusion of the recently completed ENRICH trial. The current review aims to identify trials of clearly defined stress management interventions in an attempt to separate out the evaluation of these from other psychological interventions.

AUTHORS' CONCLUSIONS

Implications for practice

Overall, the current evidence suggests that psychological interventions for patients with CHD have small beneficial effects on anxiety and depression, but no effect on total or cardiac mortality. The apparent effect on non-fatal myocardial infarction may be due to publication or ascertainment bias. The small number of trials evaluating the effectiveness of stress management as a single intervention preclude strong implications for practice. Combined psychological interventions appear more likely to result in appropriate

behavioural change which in itself is worth achieving. We were unable to examine whether stress management interventions may be more effective when focused on those patients with evidence of high distress in the current review due to the small number of trials including such patients.

Implications for research

Trials with a stress management component intervention showed weak evidence of a reduction in anxiety and depression. However, the findings arose principally from small trials that include other rehabilitation interventions, and the possibility that these interventions, rather than stress management, are the effective intervention(s), cannot be excluded. No evidence of effect was seen for all cause or cardiac mortality, and inconclusive effects were seen for non-fatal reinfarction. Following the results of two large negative RCTs - one of stress management (Jones) and the other of psychological intervention (ENRICH), it is doubtful that further similar trials of these interventions for clinical outcomes are needed or will be conducted. Negative trials that have not been published should be presented in the public domain to aid future research synthesis. Any future trials in this area need to be more careful to avoid sources of bias by using better designs. Further work evaluating stress management as defined in this review and other psychological interventions should focus on those patients with psychological distress who may benefit and attempt to achieve sufficiently intensive intervention to alter psychological outcomes. If promising interventions are found, it may then be worth testing them in larger trials for effects on recurrent clinical events.

ACKNOWLEDGEMENTS

We would like to acknowledge all authors who provided additional information on request (authors from the following trials - ENRICH, Johnston, Jones, Oldenburg 1985, Toobert) and Cornelia Junghans for Russian and German translations.

REFERENCES

References to studies included in this review

Allison {published data only}

Allison TG, Farkouh ME, Smars PA, Evans RW, Squires RW, Gabriel SE, et al. Management of coronary risk factors by trained nurses versus usual care in patients with unstable angina pectoris (a chest pain evaluation in the emergency room (CHEER) substudy). *Am J Cardiol* 2000;**86**: 133-138.

Black {published data only}

Black JL, Allison TG, Williams DE, Rumman TA, Gau GT. Effect of intervention for psychological distress on

rehospitalization rates in cardiac rehabilitation patients. *Psychosomatics* 1998;**39**(2):134-43.

Brown {published data only}

Brown MA, Munford AM, Munford PR. Behavior therapy of psychological distress in patients after myocardial infarction or coronary bypass. *J Cardiopulm Rehabil* 1993; **13**(3):201-10.

Burell {published data only}

Burell G. Behaviour modification after coronary artery bypass graft surgery: effects on cardiac morbidity and

- mortality. *J Rehabil Sci* 1995;**8**:39–40.
- Burell G. Group psychotherapy in Project New Life: Treatment of coronary-prone behaviors for patients who have had coronary artery bypass graft surgery. In: Allan R, Scheidt S editor(s). *Heart and Mind*. Washington: American Psychological Association, 1996:291–310.
- Burgess** *{published data only}*
Burgess AW, Lerner DJ, D'Agostino RB, Vokonas PS. A randomized control trial of cardiac rehabilitation. *Social Science & Medicine* 1987;**24**(4):359–70.
- Cowan** *{published data only}*
Cowan MJ, Pike KC, Kogan Budzynski H. Psychosocial nursing therapy following sudden cardiac arrest: impact on two-year survival. *Nursing Research* 2001;**50**(2):68–76.
- Debusk** *{published data only}*
DeBusk RF, Miller NH, Superko HR, Dennis CA, Thomas RJ, Lew HT, et al. A case-management system for coronary risk factor modification after acute myocardial infarction. *Annals of Internal Medicine* 1994;**120**(9):721–29.
- Elderen** *{published data only}*
Elderen-van-Kemenade T, Maes S, van-den-Broek Y. Effects of a health education programme with telephone follow-up during cardiac rehabilitation. *British Journal of Clinical Psychology* 1994;**33**(3):367–78.
- ENRICHD** *{published data only}*
Anonymous. Enhancing recovery in coronary heart disease patients (ENRICHD): study design and methods. The ENRICHD investigators. *American Heart Journal* 2000;**139**(1 Pt 1):1–9.
Louis AA, Manousos R, Coletta AP, Clark AL, Cleland JGF. Clinical trials update: The Heart Protection Study, IONA, CARISA, ENRICHD, ACUTE, ALIVE, MADIT II and REMATCH. *The European Journal of Heart Failure* 2002;**4**: 111–116.
Writing Committee for the ENRICHD Investigators. Effects of Treating Depression and Low Perceived Social Support on Clinical Events After Myocardial Infarction: The Enhancing Recovery in Coronary Heart Disease Patients (ENRICHD) Randomized Trial. *JAMA* 2003;**289**: 3106–16.
- Erdman** *{published data only}*
Erdman RAM, Duivenvoorden HJ. Psychologic evaluation of a cardiac rehabilitation program: A randomized clinical trial in patients with myocardial infarction. *J Card Rehabil* 1983;**3**(10):696–704.
Erdman RAM, Duivenvoorden HJ, Verhage F, et al. Predictability of beneficial effects in cardiac rehabilitation: A randomized clinical trial of psychosocial variables. *J Cardiopulm Rehabil* 1986;**6**(6):206–13.
- Frasure Smith** *{published data only}*
Frasure-Smith N, Prince R. Long-term follow-up of the Ischemic Heart Disease Life Stress Monitoring Program. *Psychosomatic Medicine* 1989;**51**(5):485–513.
Frasure-Smith N, Prince R. The ischemic heart disease life stress monitoring program: Impact on mortality. *Psychosomatic Medicine* 1985;**46**(4):293–313.
Frasure-Smith N, Prince RH. The Ischemic Heart Disease Life Stress Monitoring Program: Possible therapeutic mechanisms. *Psychology and Health* 1987;**1**(3):273–85.
- Frasure Smith 1997** *{published data only}*
Frasure SN, Lesperance F, Prince RH, Verrier P, Garber RA, Juneau M, et al. Randomised trial of home-based psychosocial nursing intervention for patients recovering from myocardial infarction. *Lancet* 1997;**350**(9076): 473–79.
- Fridlund** *{published data only}*
Fridlund B, Hogstedt B, Lidell E, Larsson PA. Recovery after myocardial infarction. Effects of a caring rehabilitation programme. *Scandinavian Journal of Caring Sciences* 1991;**5** (1):23–32.
- Gallacher** *{published data only}*
Gallacher JEJ, Hopkinson CA, Bennett P, Burr ML, Elwood PC. Effect of stress management on angina. *Psychology and Health* 1997;**12**(4):523–32.
- Gutschker** *{published data only}*
Gutschker A, Schaller K, Geissler W. Results of a territorial random long-term study on the comprehensive rehabilitation of patients after acute myocardial infarction. *Das deutsche Gesundheitswesen* 1982;**37**(20):918–31.
- HofmanBang** *{published data only}*
HofmanBang C, Lisspers J, Nordlander R, Nygren A, Sundin O, Ohman A, et al. Two-year results of a controlled study of residential rehabilitation for patients treated with percutaneous transluminal coronary angioplasty - A randomized study of a multifactorial programme. *European Heart Journal* 1999;**20**:1465–74.
Lisspers J, Sundin O, Hofman-Bang C, Nordlander R, Nygren A, Ryden L, et al. Behavioral effects of a comprehensive, multifactorial program for lifestyle change after percutaneous transluminal coronary angioplasty: A prospective, randomized, controlled study. *Journal of Psychosomatic Research* 1999;**46**(2):143–54.
- Ibrahim** *{published data only}*
Ibrahim MA, Feldman JG, Sultz HA, Staiman MG, Young LJ, Dean D. Management after myocardial infarction: A controlled trial of the effect of group psychotherapy. *International Journal of Psychiatry in Medicine* 1974;**5**: 253–68.
- Johnston** *{published data only}*
Johnston M, Foulkes J, Johnston DW, Pollard B, Gudmundsdottir H. Impact on patients and partners of inpatient and extended cardiac counseling and rehabilitation: A controlled trial. *Psychosomatic Medicine* 1999;**61**(2):225–33.
- Jolly** *{published data only}*
Jolly K, Bradley F, Sharp S, Smith H, Mant D. Follow-up care in general practice of patients with myocardial infarction or angina pectoris: initial results of the SHIP trial. *Family Practice* 1998;**15**:548–55.
Jolly K, Bradley F, Sharp S, Smith H, Thompson S, Kinmouth AL, Mant D. Randomised controlled trial of

- follow up care in general practice of patients with myocardial infarction and angina: final results of the Southampton heart integrated care project (SHIP). *British Medical Journal* 1999;**318**:706–711.
- Jones** *{published data only}*
Jones DA, West RR. Psychological rehabilitation after myocardial infarction: Multicentre randomised controlled trial. *British Medical Journal* 1996;**313**(7071):1517–21.
- Lewin** *{published data only}*
* Lewin B, Robertson IH, Cay EL, Irving JB, Campbell M. Effects of self-help post-myocardial-infarction rehabilitation on psychological adjustment and use of health services. *Lancet* 1992;**339**(8800):1039–40.
- Lidell** *{published data only}*
Fridlund B, Pihlgren C, Wannestig LB. A supportive-educative caring rehabilitation programme; improvements of physical health after myocardial infarction. *Journal of Clinical Nursing* 1992;**1**:141–6.
Lidell E, Fridlund B. Long-term effects of a comprehensive rehabilitation programme after myocardial infarction. *Scandinavian Journal of Caring Sciences* 1996;**10**(2):67–74.
- McHugh** *{published data only}*
McHugh F, Lindsay GM, Hanlon P, Hutton I, Brown MR, Morrison C, et al. Nurse led shared care for patients on the waiting list for coronary artery bypass surgery: a randomised controlled trial. *Heart* 2001;**86**:317–323.
- Mitsibounas 1992** *{published data only}*
Mitsibounas DN, Tsouma-Hadjis ED, Rotas VR, Sideris DA. Effect of group psychosocial intervention on coronary risk factors. *Psychotherapy and Psychosomatics* 1992;**58**: 97–102.
- Nordmann** *{published data only}*
Nordman A, Heilmbauer I, Walker T, Martina B, Battagay E. A case management programme of medium intensity does not improve cardiovascular risk factor control in coronary artery disease patients: The Heartcare 1 Trial. *Am J Med* 2001;**110**:543–550.
- Oldenburg 1985** *{published data only}*
Oldenburg B, Perkins RJ, Andrews G. Controlled trial of psychological intervention in myocardial infarction. *Journal of Consulting & Clinical Psychology* 1985;**53**(6):852–9.
- Oldenburg 1995** *{published data only}*
* Oldenburg B, Martin A, Greenwood J, Bernstein L, Allan R. A controlled trial of a behavioral and educational intervention following coronary artery bypass surgery. *Journal of Cardiopulmonary Rehabilitation* 1995;**15**(1): 39–46.
- Ornish** *{published data only}*
Ornish D, Brown SE, Scherwitz LW, Billings JH, Armstrong WT, Ports TA, et al. Can lifestyle changes reverse coronary heart disease? The Lifestyle Heart Trial. *Lancet* 1990;**336** (8708):129–33.
Ornish D, Scherwitz LW, Billings JH, Brown SE, Gould KL, Merritt TA, et al. Intensive lifestyle changes for reversal of coronary heart disease. *JAMA* 1998;**280**(23):2001–7.
- PRECOR** *{published data only}*
Saint PA, Boissel JP, Leizorovicz A, Peyrieux JC, Vasselon C, Gillet J, et al. Comparison of a rehabilitation programme, a counselling programme and usual care after an acute myocardial infarction: Results of a long-term randomized trial. *Eur Heart J* 1991;**12**(5):612–6.
- Rahe** *{published data only}*
Rahe RH, Ward HW, Hayes V. Brief group therapy in myocardial infarction rehabilitation: Three- to four-year follow-up of a controlled trial. *Psychosomatic Medicine* 1979;**51**(3):229–42.
- RCCP** *{published data only}*
Friedman M, Thoresen CE, Gill JJ. Alteration of Type A behavior and its effect on cardiac recurrences in post myocardial infarction patients: Summary results of the recurrent coronary prevention project. *American Heart Journal* 1986;**112**:653–65.
Friedman M, Thoresen CE, Gill JJ, Ulmer D, Thompson L, Powell L, et al. Feasibility of altering type A behaviour pattern after myocardial infarction. *Circulation* 1982;**66**(1): 83–92.
Mendes-de Leon C, Powell LH, Kaplan BH. Change in coronary-prone behaviors in the recurrent coronary prevention project. *Psychosomatic Medicine* 1991;**53**(4): 407–19.
Powell LH. Can the Type A behavior pattern be altered after myocardial infarction? A second year report from the Recurrent Coronary Prevention Project. *Psychosomatic Medicine* 1984;**46**(4):293–313.
Powell LH, Thoresen CE. Effects of type A behavioral counseling and severity of prior acute myocardial infarction on survival. *American Journal of Cardiology* 1988;**62**(17): 1159–63.
- Stern** *{published data only}*
Stern MJ, Gorman PA, Kaslow L. The group counseling v exercise therapy study. A controlled intervention with subjects following myocardial infarction. *Archives of Internal Medicine* 1983;**143**(9):1719–25.
- Thompson** *{published data only}*
Thompson DR. A randomized controlled trial of in-hospital nursing support for first time myocardial infarction patients and their partners: effects on anxiety and depression. *Journal of Advanced Nursing* 1989;**14**(4):291–7.
Thompson DR. Effect of in-hospital counseling on knowledge in myocardial infarction patients and spouses. *Patient Education and Counseling* 1991;**18**:171–177.
Thompson DR, Meddis R. A prospective evaluation of in-hospital counselling for first time myocardial infarction men. *Journal of Psychosomatic Medicine* 1990;**34**(3): 237–248.
Thompson DR, Webster RA, Meddis R. In-hospital counselling for first-time myocardial infarction patients and spouses: effects on satisfaction. *Journal of Advanced Nursing* 1990;**15**(9):1064–69.
- Toobert** *{published data only}*
Toobert DJ, Glasgow RE, Nettekoven LA, Brown JE. Behavioral and psychosocial effects of intensive lifestyle

management for women with coronary heart disease. *Patient Education and Counseling* 1998;**35**(3):177–88.

Van Dixhoorn *{published data only}*

Van-Dixhoorn J, Duivenvoorden HJ, Pool J, Verhage F. Psychic effects of physical training and relaxation therapy after myocardial infarction. *Journal of Psychosomatic Research* 1990;**34**(3):327–37.

Van-Dixhoorn J, Duivenvoorden HJ, Staal HA, Pool J. Physical training and relaxation therapy in cardiac rehabilitation assessed through a composite criterion for training outcome. *American Heart Journal* 1989;**118**(3): 545–52.

Van-Dixhoorn J, Duivenvoorden HJ, Staal JA, Pool J, Verhage F. Cardiac events after myocardial infarction: possible effect of relaxation therapy. *European Heart Journal* 1987;**8**(11):1210–14.

Van-Dixhoorn JJ, Duivenvoorden HJ. Effect of relaxation therapy on cardiac events after myocardial infarction: a 5-year follow-up study. *Journal of Cardiopulmonary Rehabilitation* 1999;**19**(3):178–85.

Vermeulen *{published data only}*

Vermeulen A, Lie KI, Durrer D. Effects of cardiac rehabilitation after myocardial infarction: changes in coronary risk factors and long-term prognosis. *American Heart Journal* 1983;**105**(5):798–801.

References to studies excluded from this review

Amarosa Tupler *{published data only}*

Amarosa TB, Tapp JT, Carida RV. Stress management through relaxation and imagery in the treatment of angina pectoris. *J Cardiopulm Rehabil* 1989;**9**(9):348–55.

Ashton *{published data only}*

Ashton CJ, Whitworth GC, Seldomridge JA, Shapiro PA, Weinberg AD, Michler RE, et al. Self-hypnosis reduces anxiety following coronary artery bypass surgery. A prospective, randomized trial. *Journal of Cardiovascular Surgery* 1997;**38**(1):69–75.

Ashton RJ, Whitworth GC, Seldomridge JA, Shapiro PA, Michler RE, Smith CR, et al. The effects of self-hypnosis on quality of life following coronary artery bypass surgery: preliminary results of a prospective, randomized trial. *Journal of Alternative & Complementary Medicine* 1995;**1**(3): 285–90.

Beresnevaite *{published data only}*

Beresnevaite M. Exploring the benefits of group psychotherapy in reducing alexithymia in coronary heart disease patients. *Psychotherapy and Psychosomatics* 2000;**69**: 117–22.

Blankfield *{published data only}*

Blankfield RP, Zyzanski SJ, Flocke SA, Alemagno S. Taped therapeutic suggestions and taped music as adjuncts in the care of coronary-artery-bypass patients. *American Journal of Clinical Hypnosis* 1995;**37**(3):32–42.

Blumenthal *{published data only}*

Blumenthal JA, Jiang W, Babyak MA, Krantz DS, Frid DJ, Coleman RE, et al. Stress management and exercise training

in cardiac patients with myocardial ischemia. Effects on prognosis and evaluation of mechanisms. *Archives of Internal Medicine* 1997;**157**(19):2213–23.

Bundy *{published data only}*

Bundy C, Carroll D, Wallace L, Nagle R. Psychological treatment of chronic stable angina pectoris. *Psychology and Health* 1994;**10**:69–77.

Bundy C, Carroll D, Wallace L, Nagle R. Stress management and exercise training in chronic stable angina pectoris. *Psychology and Health* 1998;**13**:147–55.

Clark *{published data only}*

Clark NM, Janz NK, Becker MH, Schork MA. Impact of self-management education on the functional health status of older adults with heart disease. *Gerontologist* 1992;**32**(4): 438–43.

Egger *{published data only}*

Egger J, Schoberberger R, Schleicher E. Coronary-prone behaviour: An attempt to modify type A behaviour in myocardial infarction patients [Herzinfarktfornderndes typ-a-verhalten – ein versuch der modifikation von stressinduzierendem verhalten]. *Rehabilitation* 1986;**25**(3): 95–101.

Elliot *{published data only}*

Elliott D. The effects of music and muscle relaxation on patient anxiety in a coronary care unit. *Heart & Lung* 1994; **23**(1):27–35.

Fielding *{published data only}*

Fielding R. A note on behavioural treatment in the rehabilitation of myocardial infarction patients. *British Journal of Social and Clinical Psychology* 1980;**19**:157–61.

Fletcher *{published data only}*

Fletcher V. An individualized teaching programme following primary uncomplicated myocardial infarction. *Journal of Advanced Nursing* 1987;**12**(2):195–200.

Garding *{published data only}*

Garding BS, Kerr JC, Bay K. Effectiveness of a program of information and support for myocardial infarction patients recovering at home. *Heart & Lung* 1988;**17**(4):355–62.

Gidron *{published data only}*

Gidron Y, Davidson K, Bata I. The short-term effects of a hostility-reduction intervention on male coronary heart disease patients. *Health Psychology* 1999;**18**(4):416–20.

Gortner *{published data only}*

Gortner SR, Gilliss CL, Shinn JA, Sparacino PA, Rankin S, Leavitt M, et al. Improving recovery following cardiac surgery: a randomized clinical trial. *Journal of Advanced Nursing* 1988;**13**(5):649–61.

Gruen *{published data only}*

Gruen W. Effects of brief psychotherapy during the hospitalization period on the recovery process in heart attacks. *Journal of Consulting & Clinical Psychology* 1975;**43** (2):223–32.

Guzzetta {published data only}

Guzzetta CE. Effects of relaxation and music therapy on patients in a coronary care unit with presumptive acute myocardial infarction. *Heart & Lung* 1989;**18**(6):609–16.

Heller {published data only}

Heller RF, Lim L, Valenti L, Knapp J. A randomised controlled trial of community based counselling among those discharged from hospital with ischaemic heart disease. *Australian & New Zealand Journal of Medicine* 1995;**25**(4):362–64.

Horlick {published data only}

Horlick L, Cameron R, Firor W, Bhalerao U, Baltzan R. The effects of education and group discussion in the post myocardial infarction patient. *J Psychosom Res* 1984;**28**(6):485–92.

Israelsson {published data only}

Israelsson B, Alm C, Hakansson M. Social rehabilitation of patients with coronary disease. A new type of cooperation improves the results. *Lakartidningen* 1995;**92**(48):4582–89.

Langosch {published data only}

Langosch W, Seer P, Brodner G, Kallinke D, Kulick B, Heim F. Behavior therapy with coronary heart disease patients: results of a comparative study. *J Psychosom Res* 1982;**26**(5):475–84.

Naismith {published data only}

Naismith LD, Robinson JF, Shaw GB, MacIntyre MM. Psychological rehabilitation after myocardial infarction. *British Medical Journal* 1979;**1**(6161):439–42.

Ohm {published data only}

Ohm D. Relaxation training and hypnotherapy in coronary patients with high internal control beliefs [Entspannungstraining und begleitende Hypnose-therapie bei Koronarpatienten mit hohen internalen Kontrollueberzeugungen]. *Zeitschrift fur Klinische Psychologie* 1990;**19**(3):256–67.

Oldridge {published data only}

Oldridge N, Guyatt G, Crowe J, Feeny D, Jones N. Goal attainment in a randomized controlled trial of rehabilitation after myocardial infarction. *Journal of Cardiopulmonary Rehabilitation* 1998;**19**(1):29–34.

Oldridge N, Guyatt G, Jones N, Crowe J, Singer J, Feeny D, et al. Effects on quality of life with comprehensive rehabilitation after acute myocardial infarction. *American Journal of Cardiology* 1991;**67**(13):1084–89.

Oldridge N, Streiner D, Hoffmann R, Guyatt G. Profile of mood states and cardiac rehabilitation after acute myocardial infarction. *Medicine & Science in Sports & Exercise* 1995;**27**(6):900–5.

Rakov {published data only}

Rakov ALM. The results of autogenic training in patients with ischemic heart disease after an aortocoronary bypass operation. *Voenno Meditsinskii Zhurnal* 1997;**318**(2):37–41.

Schindler {published data only}

Schindler BA, Shook J, Schwartz GM. Beneficial effects of psychiatric intervention on recovery after coronary artery

bypass graft surgery. *General Hospital Psychiatry* 1989;**11**:358–64.

Taylor {published data only}

Taylor CB, Miller NH, Smith PM, DeBusk RF. The effect of a home-based, case-managed, multifactorial risk-reduction program on reducing psychological distress in patients with cardiovascular disease. *Journal of Cardiopulmonary Rehabilitation* 1997;**17**(3):157–62.

Thomas {published data only}

Thomas JJ. Cardiac inpatient education: The impact of educational methodology on self-efficacy. *J Cardiopulm Rehabil* 1993;**13**(6):398–405.

Trzcieniecka-Green {published data only}

Trzcieniecka GA, Steptoe A. The effects of stress management on the quality of life of patients following acute myocardial infarction or coronary bypass surgery. *European Heart Journal* 1996;**17**(11):1663–70.

Turner {published data only}

Turner L, Linden W, van der Wal R, Schamberger W. Stress management for patients with heart disease: A pilot study. *Heart and Lung* 1995;**24**:145–53.

Zamarra {published data only}

Zamarra JW, Schneider RH, Besseghini I, Robinson DK, Salerno JW. Usefulness of the transcendental meditation program in the treatment of patients with coronary artery disease. *American Journal of Cardiology* 1996;**77**(10):867–70.

References to studies awaiting assessment**Collins {published data only}**

Collins B, Donoghue S, Plant RD. An investigation into the use of relaxation techniques in the treatment of myocardial infarction. *Clin Rehabil* 1992;**6**:73.

Priebe {published data only}

Priebe S, Sinning U. Effects of brief couple therapy intervention in cardiac rehabilitation - a controlled trial [Effekte einer kurzen paatherapeutischen intervention in der koronarrehabilitation]. *Psychother Psychosom med Psychol* 2001;**51**:276–280.

References to ongoing studies**CORE {published data only}**

The CORE Investigators. Design of a randomised controlled trial of comprehensive cardiac rehabilitation in patients with myocardial infarction, stabilized acute coronary syndrome, percutaneous transluminal coronary angioplasty or coronary artery bypass grafting: Akershus Comprehensive Cardiac Rehabilitation Trial (the CORE Study). *Curr Controlled Trials in Cardiovasc Med* 2000;**1**:177–183.

Additional references**Barefoot 1996**

Barefoot JC, Schroll M. Symptoms of depression, acute myocardial infarction, and total mortality in a community sample. *Circulation* 1996;**93**:1976–80.

Beck 1961

Beck AT, Ward CH, Mendelson M, Mock J, Erbauch J. An inventory for measuring depression. *Arch Gen Psychiatry* 1961;**4**:53.

Beck 1997

Beck AT. Cognitive Therapy: Reflections. In: JK Zeig editor(s). *The evolution of psychotherapy: The third conference*. New York: Brunner/Mazel, 1997.

Bedford 1976

Bedford A, Foulds GA, Sheffield BF. A new personal disturbance scale (DSSI/sAD). *Brit J Soc Clin Psychol* 1976;**15**:387–94.

Bennett 1990

Bennett P, Carroll D. Type A behaviours and heart disease: epidemiological and experimental foundations. *Behavioural Neurology* 1990;**3**:261–77.

Bennett 1994

Bennett P, Carroll D. Cognitive-behavioural interventions in cardiac rehabilitation. *Journal of Psychosomatic Research* 1994;**28**:169–82.

BHF 2003

British Heart Foundation. Coronary Heart Disease statistics. *British Heart Foundation Statistics Database 2003*. London: British Heart Foundation, 2003.

Burrell 1986

Burrell G, Sundin O, Strom G, Ohman A. Heart and Lifestyle: A Type A treatment program for myocardial infarction patients. *Scandinavian Journal Behavioural Therapy* 1986;**15**:87–93.

CES-D 1977

Radloff LS. A The CES-D Scale self-report depression scale for research in the general population. *Applied Psychological Measures* 1977;**1**(3):385–401.

Cochrane Heart Group

Cochrane Heart Group. Preferred method for handling continuous variables. <http://www.epi.bris.ac.uk/cochrane/stats3.html>. Accessed October 2003.

Davidson 1995

Davidson C, Reval DA, Chamberlain DA, Pentecost B, Parker J A. Report of the working group of the British Cardiac Society: cardiac rehabilitation services in the United Kingdom. *British Heart Journal* 1995;**73**:201–20.

DeBusk 1994

DeBusk RF, Miller NH, Superko R, Dennis CA, Thomas RJ, Lew HT, et al. A case-management system for coronary risk factor modification after acute myocardial infarction. *Annals of Internal Medicine* 1994;**120**:721–29.

Derogatis 1987

Derogatis LR. The Derogatis Stress Profile (DSP): Quantification of psychologic stress. *Advances in Psychosomatic Medicine* 1987;**17**:30–54.

Dickersin 1994

Dickersin K, Scherer R, Lefebvre C. Identifying relevant studies for systematic reviews. *British Medical Journal* 1994;**309**:1286–91.

Dracup 1984

Dracup K, Meleis AI, Clark S, Clyburn A, Shields L, Staley M. Group counselling in cardiac rehabilitation: Effect on patient compliance. *Patient Education and Counselling* 1984;**6**:169–77.

Dusseldorp 1999

Dusseldorp E, van Elderen T, Maes S, Meulman J, Kraaij V. A meta-analysis of psychoeducational programs for coronary heart disease patients. *Health Psychology* 1999;**18**:506–19.

Egger 1997

Egger M, Davey Smith G, Schneider M, Minder C. Bias in meta-analysis detected by a simple graphical test. *BMJ* 1997;**315**:629–634.

Follmann 1992

Follmann D, Elliot P, Suh I, Cutler J. Variance imputation for overviews of clinical trials with continuous response. *Journal of Clinical Epidemiology* 1992;**45**:769–73.

Ford 1998

Ford DE, Mead LA, Chang PP, Cooper-Patrick L, Wang NY, Klag MJ. Depression is a risk factor for coronary artery disease in men: the precursors study. *Arch Intern Med* 1998;**158**:1422–6.

Friedman 1986

Friedman M, Thoresen CE, Gill JJ, Ulmer D, Powell LH, Price VA, et al. Alteration of type A behavior and its effect on cardiac recurrences in post myocardial infarction patients: Summary results of the recurrent coronary prevention project. *American Heart Journal* 1986;**112**:653–65.

Gillis 1993

Gillis CL, Gortner SR, Hauck WW, Shinn JA, Spacarino PA, Tompkins C. A randomized clinical trial of nursing care for recovery from cardiac surgery. *Heart and Lung* 1993;**22**:125–33.

HAD 1983

Zigmond AS, Snaith RP. The Hospital and Anxiety Depression Scale. *Acta Psychiatr Scand* 1983;**67**:361–70.

HAM-D

Williams JBW. A structured interview for the Hamilton Depression Rating Scale. *Arch Gen Psychiatry* 1988;**45**:742–7.

Hemingway 1999

Hemingway H, Marmot MG. Psychological factors in the aetiology and prognosis of coronary heart disease: systematic review of prospective studies. *BMJ* 1999;**53**:193–201.

Horlick 1984

Horlick L, Cameron R, Firor W, Bhalerao U, Baltaz R. The effects of education and group discussion in the post myocardial infarction patient. *Journal of Psychosomatic Research* 1984;**28**:485–92.

Horowitz 1979

Horowitz MJ, Wilner N, Alvarez W. Impact of Events Scale: a measure of subjective stress. *Psychosom Med* 1979;**41**:209–18.

Karvetti 1981

Karvetti RL. Changes in the diet of myocardial infarction patients: Effects of nutrition education. *Journal of the American Dietetic Association* 1981;**79**:660–7.

Lefebvre 1996

Lefebvre C, McDonald S. Development of a sensitive search strategy for reports of randomised controlled trials in EMBASE. Paper presented at the Fourth International Cochrane Colloquium, 20-24 Oct; Adelaide, Australia. 1996.

Linden 1996

Linden W, Stossel C, Maurice J. Psychosocial interventions for patients with coronary artery disease: a meta-analysis. *Archives of Internal Medicine* 1996;**156**:745–52.

Macleod 2002

Macleod J, Davey Smith G, Heslop P, Metcalfe C, Carroll D, Hart C. Psychological stress and cardiovascular disease: empirical demonstration of bias in a prospective observational study of Scottish men. *BMJ* 2002;**324**:1247–1251.

Maes 1992

Maes S. Cardiac Rehabilitation in Europe. *British Journal Clinical Psychology* 1992;**31**:473–584.

Meichenbaum 1985

Meichenbaum D. *Stress inoculation training*. New York: Pergamon, 1985.

Mitsibounas 1992

Mitsibounas DN, Tsouma-Hadjis ED, Rotas VR, Sideris DA. Effect of group psychosocial intervention on coronary risk factors. *Psychotherapy and Psychosomatics* 1992;**58**:97–102.

MOS SF36

Ware JE, Sherbourne CD. The MOS 36-item short-form health survey (SF-36). I. Conceptual framework and item selection. *Med Care* 1992;**30**:473–83.

Parrott 1995

Parrott A. Stress modulation over the day in cigarette smokers. *Addiction* 1995;**90**:233–44.

SCL-90-R

Derogatis LR. *SCL-90-R: administration, scoring and procedures manual - II, for the R (revised) version and other instruments of the psychopathology rating scale series. 2*. Towson Md: Clinical Psychometric Research, 1983.

STAI 1970

Spielberger C, Gorsuch R, Lushene R. *STAI Manual*. Palo Alto: Consulting Psychologists Press Inc., 1970.

Stansfeld 2002

Stansfeld S, Marmot M. *Stress and the heart*. London: BMJ Publications, 2002.

Taylor 1953

Taylor JA. A personality scale of manifest anxiety. *J Abnorm Soc Psychol* 1953;**48**:285–90.

Todd 1996

Todd M, Chassin L, Presson CC, et al. Role stress, role socialization, and cigarette smoking: Examining multiple roles and moderating variables. *Psychology of Addictive Behavior* 1996;**10**:211–21.

West 1995

West R. Evaluation of cardiac rehabilitation programmes. In: Jones D, West R, editor(s). *Cardiac Rehabilitation*. London: BMJ Publishing, 1995.

Zung 1965

Zung WWK. A self-rating depression scale. *Archs Gen Psychiat* 1965;**12**:63–9.

* Indicates the major publication for the study

CHARACTERISTICS OF STUDIES

Characteristics of included studies *[ordered by study ID]*

Allison

| | |
|---------------|---|
| Methods | RCT |
| Participants | Unstable angina. Patients randomised post discharge from hospital admission for acute chest pain. Only those patients deemed to be of intermediate or high risk were randomised. Intervention started 6-10 days post discharge. No identified levels of psychopathology prior to intervention. 441 patients randomised, 56% male, mean age 58 years |
| Interventions | Nurse led counselling on exercise, diet and smoking cessation, referrals and drug management. Individual risk reducing plan developed for each patient. One hour appointment 6-10 days post discharge, and at 25-35 days, final follow up 24-28 weeks post discharge. Control group received usual medical care |
| Outcomes | Clinical events (cardiac mortality, MI, CABG) |
| Notes | |

Black

| | |
|---------------|---|
| Methods | RCT |
| Participants | Acute CHD events (MI, revascularisation, angina), patients randomised within 3 months of hospital stay. Identified levels of psychopathology as selection criteria, threshold-Global Severity Index T score ≥ 63 (of the symptom checklist 90 revised). 60 patients randomised, mean age 60.2 years, 88% men |
| Interventions | Includes stress management intervention. Complex psychological intervention plus other rehabilitation interventions. All patients received CCR, the intervention group received also 1 or more of the following: individualised relaxation training, SM, efforts to reduce behavioural risk factors, efforts to increase compliance, and cognitive-behavioural interventions for identified anxiety/depression/hostility. 1-7 weekly sessions with a clinical psychologist. Follow-up 21 months |
| Outcomes | Clinical events (total mortality, MI, CABG, PTCA combined), anxiety and depression |
| Notes | Contacted authors for breakdown of clinical events and depression scores and GSI at baseline and 12 months |

Brown

| | |
|--------------|--|
| Methods | RCT |
| Participants | MI or CABG within 4-24 months. Identified levels of psychopathology as selection criteria, threshold - 13+ on the Beck Depression Scale, or 70+ on the global severity index. 54 patients randomised, mean age 60.7, 54% men. Patients were older, and there were more women in the intervention group. Patients recruited from CR departments, newspapers and ads |

Brown (Continued)

| | |
|---------------|--|
| Interventions | Includes stress management intervention. Complex psychological intervention. Intervention included relaxation, cognitive restructuring, assertion anger management and time management, administered by clinical psychologist and psychiatrist. One group session of 1 hour per week, for 12 weeks. Partners were also trained to give positive feedback and reinforcement. Control group had time with therapists where they received non-specific treatment effects of encouragement and reassurance, excluding key behaviour therapies. Follow-up 15 months |
| Outcomes | Anxiety, depression. |
| Notes | |

Burrell

| | |
|---------------|--|
| Methods | Multicentre RCT. Block randomisation. |
| Participants | CABG patients, randomised 3-12 months post surgery. No identified levels of psychopathology prior to intervention. 261 patients randomised, mean age 57.5 years, 86% men |
| Interventions | Includes stress management intervention. Complex psychological intervention plus other rehabilitation interventions. Intervention comprised group sessions aimed at modifying coronary prone behaviour, and emotional distress, and improving stress management and coping skills. Intervention administered by a clinical psychologist, 17 sessions of 180 minutes, in year 1, and 5-6 booster sessions in years 2 and 3. Both intervention and control groups also had access to CR programmes offered by their hospital, and no attempt was made to interfere with routine medical care. Follow up 5-6.5 years post surgery |
| Outcomes | Total and cardiac mortality, non-fatal MI, CABG (re operation), PTCA, self reported type A behaviour |
| Notes | |

Burgess

| | |
|---------------|--|
| Methods | RCT |
| Participants | Acute MI, intervention started 1 week pre-discharge. No identified levels of psychopathology prior to intervention. 180 patients randomised, mean age 51 years, 85% men |
| Interventions | Includes stress management intervention. Complex psychological intervention. Intervention comprised 3 parts: cognitive behavioural intervention model to limit patient distress; minimising social network strain by offering guidance and moral support to spouse; facilitate job re-entry. Intervention administered by trained nurse clinicians, home visits, each patient receiving an average of 2.77 visits over a 3 month period. Both intervention and control patients also had access to CCR, but this was limited in scope as recently developed. Follow up 13 months |
| Outcomes | Total mortality, anxiety and depression. |
| Notes | |

Cowan

| | |
|---------------|--|
| Methods | RCT |
| Participants | Survivors of out of hospital VF or asystole. No identified levels of psychopathology prior to intervention. 133 patients randomised, 73% men, no age given |
| Interventions | Includes stress management intervention. Psychosocial intervention with 3 components - physiologic relaxation with computerised biofeedback training to reduce HR and RR; cognitive behavioural therapy aimed at self management and coping strategies for anxiety, depression and anger; HE focused on CMV risk factors. Control group received usual medical care. Each patient received 11 sessions of 90 minutes, twice a week. Follow up period - 2 years |
| Outcomes | Total mortality, cardiac mortality, non-fatal MI |
| Notes | |

Debusk

| | |
|---------------|--|
| Methods | RCT |
| Participants | Acute MI, patients randomised on day 3 post event. No identified levels of psychopathology prior to intervention. 585 patients randomised, 79% men, mean age 57 years |
| Interventions | Comprehensive cardiac rehabilitation. Special intervention included behavioural interventions derived from social learning theory, where patients learn how to monitor health habits they seek to change and set attainable goals. Focus on coronary risk factor modification. Physician led, nurse managed, home based case management system. Nursing effort approximately 9 hours contact per patient over a 12 month period. Maximum of 14 phone contacts, 8 patient visits to outpatients and 4 patient visits to the nurse manager. Control group received some rehabilitation but not the special intervention. Duration of follow up - 12 months |
| Outcomes | Total and cardiac mortality, non-fatal MI, CABG/PTCA, smoking and serum cholesterol |
| Notes | |

Elderen

| | |
|---------------|---|
| Methods | RCT. Block randomisation. |
| Participants | Acute MI, patients randomised before hospital discharge. No identified levels of psychopathology prior to intervention. 60 patients randomised, 82% men, mean age 57 years |
| Interventions | Individual counselling whilst in hospital. Group counselling/health education including risk factors, anxiety and depression, medication (two 90 minute sessions). Phone contact by nurse once a week for reassurance and reinforcement for 6 weeks post discharge. Control group received usual medical care. Follow up at 12 months |
| Outcomes | Smoking, anxiety and depression. |
| Notes | |

ENRICHD

| | |
|---------------|---|
| Methods | Multicentre RCT |
| Participants | Recruited when recovering from an acute MI. Identified levels of depression prior to the intervention formed part of the inclusion criteria. 2481 patients were randomised, 66% men, mean age 61 years |
| Interventions | Programme aims to reduce depression and increase social support by using cognitive behavioural therapy and pharmacotherapy if indicated. Referral to cardiac rehabilitation/support groups by patients own physician was considered to be usual care, and was available for both intervention and control patients. Intervention consisted of individual and group therapy, number of sessions per patient was variable, but intervention did not last longer than 6 months. Mean follow up was 41 months |
| Outcomes | Total mortality, non-fatal MI Measures of depression and social support. (Full data not yet available) |
| Notes | |

Erdman

| | |
|---------------|---|
| Methods | RCT |
| Participants | MI within previous 6 months. No identified levels of psychopathology prior to intervention. 80 patients randomised, mean age 51 years, all men |
| Interventions | Includes stress management intervention. Complex psychological intervention plus other rehabilitation interventions. Intervention included relaxation exercises and counselling on risk factors, how to cope with emotional distress, and modification of type A behaviour. Intervention administered by a psychologist. Patients also followed an exercise rehabilitation programme. Both interventions involved group sessions, 2/week of 120 Min, for 6 months. Control group received advice on risk factors and physical fitness training. Follow-up 5 years |
| Outcomes | Psychologic scale including well being, despondency, and social inhibition |
| Notes | |

Frasure Smith

| | |
|---------------|--|
| Methods | RCT |
| Participants | MI patients. Patients randomised irrespective of identified levels of psychopathology, but intervention recieved only by those who had 5 plus symptoms on the GHQ when screened each month. 769 patients randomised, , 230 excluded post randomisation, 78 refused, leaving 461 who started the programme. All male patients, mean age 58 years |
| Interventions | Patients phoned once a month for 6 months and asked to respond to questions from the GHQ as an index of cognitive behaviour and stress. Those with 5 or more symptoms on the GHQ were visited at home by a nurse and recieved an individually tailored combination of teaching and support, referral and consultation strategies. The visits continued until the problem resolved. Average duration of sessions was 1 hour, average number of sessions was 5 over the 6 month period (for approximately half of the patients in the intervention group who had 5 plus symptoms). Control group received usual medical care. Final follow up cut-off was 5 years (maximum of 8.3 years) |

Frasure Smith (Continued)

| | |
|----------|---|
| Outcomes | Total mortality, cardiac mortality and non-fatal MI |
| Notes | Known as the IHD Life Stress Monitoring Programme. |

Frasure Smith 1997

| | |
|---------------|---|
| Methods | RCT |
| Participants | Acute MI, randomised at hospital discharge. Patients randomised irrespective of identified levels of psychopathology, but intervention received only by those who had 5 plus symptoms on the GHQ when screened each month. 1376 patients randomised, 66% men, mean age 59 years |
| Interventions | Same protocol as above. Intervention lasted for 12 months, follow up at 12 months |
| Outcomes | Total mortality, cardiac mortality, non-fatal MI, CABG, anxiety and depression |
| Notes | Known as the M-HART Study |

Fridlund

| | |
|---------------|--|
| Methods | RCT |
| Participants | MI patients, no identified levels of psychopathology prior to intervention. 178 patients randomised, mean age 56 years, 87% men |
| Interventions | Psychological intervention plus other rehabilitation interventions. Intervention included exercise and relaxation training, and the psychosocial component was divided into 2 intervention strategies: lifestyle and stress orientated and social support orientated. Intervention administered by psychologist, rehab nurse and physician. One group rehab session per week, 2 hours duration, for 6 months. Control group received usual medical care which included information on risk factors and discussions about return to work. Follow-up 12 months |
| Outcomes | Total mortality, non-fatal MI, CABG/PTCA, WHO questionnaire including anxiety, depression and anger |
| Notes | |

Gallacher

| | |
|---------------|---|
| Methods | RCT |
| Participants | Angina patients identified from 30 GP registers, prescribed nitrates or Ca ²⁺ antagonists. No identified levels of psychopathology prior to intervention. 452 patients randomised, all men |
| Interventions | Includes stress management intervention. Complex psychological intervention. Intervention comprised 3 group sessions of 1 hour duration, with 4 and 6 weekly intervals, and included relaxation, cognitive coping strategies and general strategies for managing lifestyle and problem solving, administered by a clinical psychologist. Each patient received a manual of reference material and were given "homework" to do between sessions. Control group received usual medical care. Follow-up 6 months |

Gallacher (Continued)

| | |
|----------|--|
| Outcomes | Blood pressure, smoking, lipid levels, stress. |
| Notes | |

Gutschker

| | |
|---------------|---|
| Methods | RCT |
| Participants | Acute MI, patients randomised 28 days post MI. No identified levels of psychopathology prior to intervention. 382 patients randomised, all men, mean age 56 years |
| Interventions | Risk factor counselling, plus exercise training. Group therapy once a week for 13 weeks, then monthly for 2 years. Control group received usual medical care |
| Outcomes | Total and cardiac mortality, smoking. |
| Notes | German translation |

HofmanBang

| | |
|---------------|---|
| Methods | RCT |
| Participants | PTCA patients, patients received the intervention 1-2 weeks post surgery. No identified levels of psychopathology prior to intervention. 93 patients randomised, mean age 53 years, 84% men |
| Interventions | Includes stress management intervention. Complex psychological intervention plus other rehabilitation interventions. Intervention included training in applied relaxation, type A drills, behaviour changing activities such as SM, diet, exercise and smoking. Each patient was assigned a personal coach who was a specially trained nurse. Intervention administered during a 4 week residential stay, and continued with regular follow up checks. Control group received usual medical care. Follow-up 2 years |
| Outcomes | Total mortality, non-fatal MI, CABG, PTCA, smoking, lipid levels, anxiety, depression, anger |
| Notes | |

Ibrahim

| | |
|---------------|---|
| Methods | RCT |
| Participants | Post MI patients. No identified levels of psychopathology prior to intervention. 118 patients randomised in blocks of 12 to intervention or control. Allocation was alternate. Patients 35-65 years, mean age not stated, 90% men |
| Interventions | Group therapy sessions given by clinical psychologist once a week for a year, 1.5 hour sessions. The aim was to provide an atmosphere in which problems and solutions common to cardiac patients could be shared. Duration of follow-up was 18 months |

Ibrahim (Continued)

| | |
|----------|------------------|
| Outcomes | Total mortality. |
| Notes | |

Johnston

| | |
|---------------|--|
| Methods | RCT Block randomisation |
| Participants | Acute MI, patients randomised within 72 hours of admission. No identified levels of psychopathology prior to intervention. 117 patients randomised, mean age 56 years, 65% men |
| Interventions | Includes stress management intervention. Complex psychological intervention plus other rehabilitation interventions. 2 intervention groups - an inpatient programme which comprised health education and individualised counselling and emotional support, including discussions on the effects of stress and how to manage it. Intervention administered by a nurse counselor. Inpatient programme comprised 5 sessions, average 3.7 hours with a counselor. The second intervention included the inpatient programme plus an extended programme over 6 weeks post discharge where most patients chose to discuss the resumption of normal activities. Control group received usual medical care. Follow-up 12 months |
| Outcomes | Total mortality, anxiety and depression, HRQoL |
| Notes | |

Jolly

| | |
|---------------|---|
| Methods | Cluster RCT of GP practices |
| Participants | Mix of MI and angina patients, recruited as in patients or those who had accessed a rapid access chest clinic within 3 months. No identified levels of psychopathology prior to intervention. 597 patients randomised, 71% men, mean age 63.5 years |
| Interventions | Practice nurses trained in theory behaviour change to provide follow up care between hospital discharge and attendance at cardiac rehabilitation. Each patient had a record with structured follow up, and prompts to discuss fears and anxieties, risk factors, medication and health behaviour. Visits to GP every 2 weeks for 2 months and then 3 monthly to follow up period of 12 months |
| Outcomes | Total mortality, blood pressure, smoking, serum cholesterol. |
| Notes | |

Jones

| | |
|---------------|---|
| Methods | Multicentre RCT |
| Participants | Acute MI, Patients randomised at hospital discharge. No identified levels of psychopathology prior to intervention. 2328 patients randomised, no age restriction, 73% men |
| Interventions | Includes stress management intervention. Complex psychological intervention. Intervention included taught relaxation and coping skills, psychological therapy and opportunities for individual and group counselling. Intervention administered by clinical psychologists and health visitors, 7 sessions of 2 hours duration. Control group received usual medical care. Follow-up 12 months |
| Outcomes | Total mortality, non-fatal MI, non-fatal stroke, CABG/PTCA, anxiety and depression |
| Notes | |

Lewin

| | |
|---------------|---|
| Methods | RCT |
| Participants | Acute MI, patients randomised 3 days post event. No identified levels of psychopathology prior to intervention. 190 patients randomised, mean age 55.8 years, 72% men |
| Interventions | Includes stress management intervention. Complex psychological intervention plus other rehabilitation interventions. Heart manual - home based programme, administered by trained facilitator. Tape based relaxation and stress management programme. Other interventions included exercise. Programme consisted of 6 weekly sections, and facilitator contacted patients at 1, 3 and 6 weeks for adherence checks and further information/support. Spouses given information and advice and asked to encourage patients to comply. Control group received leaflets and the same contact from the facilitator, but only enquired about recovery and offered general support and advice. Follow up - 12 months |
| Outcomes | Anxiety and depression. |
| Notes | |

Lidell

| | |
|---------------|---|
| Methods | RCT |
| Participants | Acute MI. No identified levels of psychopathology prior to intervention. 116 patients randomised, 87% men, mean age 56 years |
| Interventions | Comprehensive cardiac rehabilitation involving input from a psychologist - group discussions about lifestyle and health risks after MI, and psychosocial consequences of MI. One hour exercise and one hour discussion once a week for 6 months, plus home training programme. Control group received usual medical care. 5 years follow up |
| Outcomes | Total mortality, non-fatal MI, CABG/PTCA |
| Notes | |

McHugh

| | |
|---------------|---|
| Methods | RCT |
| Participants | Elective CABG patients, intervention administered whilst patients were on the waiting list for surgery. No identified levels of psychopathology prior to intervention. 121 patients randomised, 75.5% male, mean age 62 years |
| Interventions | Risk factor behavioural counselling based on the patients readiness to change. Intervention administered by cardiac liaison nurse and GP practice nurse prior to cardiac surgery. Intervention tailored to individual patient needs, consisting of monthly sessions. Follow up at admission for CABG, mean waiting time 8 months. Control group received usual medical care |
| Outcomes | Blood pressure, smoking, serum cholesterol, HRQoL. |
| Notes | |

Mitsibounas 1992

| | |
|---------------|--|
| Methods | RCT |
| Participants | Acute MI patients randomised 6-8 days post MI. No identified levels of psychopathology prior to intervention. 43 patients randomised, 88% men, mean age 53 years |
| Interventions | Psychosocial intervention aimed at resolving psychological conflicts to reduce the severity of risk factors post MI. Includes taught relaxation techniques. Group sessions for one hour every 2 weeks for a year. Control group received usual medical care. Follow up at one year |
| Outcomes | Blood pressure, smoking, serum cholesterol. |
| Notes | |

Nordmann

| | |
|---------------|---|
| Methods | RCT Cluster randomisation |
| Participants | MI or angina patients from ITU. Intervention started during hospitalisation. No identified levels of psychopathology prior to intervention. 201 patients randomised, 78% male, mean age 61.5 years |
| Interventions | Risk factor counselling in hospital. Personal targets set to increase motivation, and reminders sent to the patient and GP at regular intervals. Control group received usual medical care. Duration of follow up - 18 months |
| Outcomes | Blood pressure, smoking, serum cholesterol. |
| Notes | |

Oldenburg 1985

| | |
|---------------|---|
| Methods | RCT Block randomisation. |
| Participants | Patients following first acute MI over a 12 month period. No identified levels of psychopathology prior to intervention. 46 patients randomised, mean age 56 years 89% men |
| Interventions | Includes stress management intervention. Complex psychological intervention. Patients randomised to 3 groups: group 1 - individual counselling, relaxation training and education; group 2 - relaxation training and education; control - routine medical care. Counselling group received 6-10 sessions of 45 Min duration whilst in hospital, within 48 hours of admission. Audiotapes were given for relaxation training (progressive muscular relaxation, breathing, cognitive tension awareness) and education (including how to modify type A behaviour). Follow up - 12 months |
| Outcomes | Total mortality, cardiac surgery and Heart attack Inventory (including GHQ, Spielberger State Anxiety) |
| Notes | Requested baseline and follow-up mean data and SDs for Heart Attack Inventory |

Oldenburg 1995

| | |
|---------------|---|
| Methods | RCT Block randomisation. |
| Participants | CABG patients, intervention started 4-8 weeks post discharge. No identified levels of psychopathology prior to intervention. 91 patients randomised, mean age 59.5 years, 91% men |
| Interventions | Includes stress management intervention. Complex psychological intervention plus other rehabilitation interventions. Intervention followed social learning theory, tailored to individual patients - goal setting, skills training, feedback, reinforcement and social support. Relaxation training. Intervention group received also CCR, specifically exercise. One 3 hour session/week for 6 weeks and booster sessions at 8 months and 1 year. Control group received usual medical care. Follow-up 12 months |
| Outcomes | Smoking, lipids, HRQoL, anxiety and depression. |
| Notes | |

Ornish

| | |
|---------------|--|
| Methods | RCT |
| Participants | CHD, defined by angiography. No identified levels of psychopathology prior to intervention. 93 patients randomised, 48 declined post randomisation. Mean age 59.6 years, 91% men |
| Interventions | Includes stress management intervention. Complex psychological intervention plus other rehabilitation interventions. SM training included stretching, breathing, meditation, progressive relaxation and imagery. Intervention administered by clinical psychologist. Intensive 7 day retreat, and recommended 1 hour/day assisted by relaxation tapes for the duration of follow-up of 5 years. Other interventions included a 10% vegetarian diet, moderate exercise, and smoking cessation (lifestyle heart trial). Control group - usual care - patients told to follow lifestyle advice from their personal physicians |

Ornish (Continued)

| | |
|----------|--|
| Outcomes | Total and cardiac mortality, non-fatal MI, CABG, and risk factors blood pressure, lipid levels |
| Notes | Main outcome - angiographic changes over 5 years. |

PRECOR

| | |
|---------------|---|
| Methods | RCT |
| Participants | Acute MI, patients randomised 30-60 days post MI. No identified levels of psychopathology prior to intervention. 182 patients randomised, all men, mean age 50 years |
| Interventions | Comprehensive cardiac rehabilitation and counselling programme. Group sessions of risk factor counselling. Control group received usual medical care. Duration of follow up - 2 years |
| Outcomes | Total mortality, non-fatal MI, CABG |
| Notes | |

Rahe

| | |
|---------------|--|
| Methods | RCT |
| Participants | First MI. Patients randomised after hospital discharge (approximately 1 month). No identified levels of psychopathology prior to intervention. 44 patients randomised, 89% men, mean age 53 years |
| Interventions | Group therapy, topics covered included life stress and the onset of MI, contribution of physical and psychological risk factors, coronary prone behaviour, home problems and return to work. 90 minute sessions every fortnight for 12 weeks. Control group received usual medical care. Duration of follow up 3-4 years |
| Outcomes | Total mortality, non-fatal MI, CABG |
| Notes | |

RCCP

| | |
|---------------|---|
| Methods | RCT. Patients randomised 2:1 to the intervention and comparison groups |
| Participants | MI within 6 months. No identified levels of psychopathology prior to intervention. 862 patients randomised, 92% men, mean age 53 years |
| Interventions | Includes stress management intervention. All patients (intervention and control) received risk factor counselling from cardiologists. Group sessions every 2 weeks for 3 months, monthly for 3 months and 3 monthly thereafter. In addition to risk factor counselling, the intervention group received type A behavioural counselling administered by a psychiatrist or clinical psychologist. The intervention included relaxation learning - progressive muscle relaxation, mental relaxation, behavioural learning - recognition and modification of exaggerated arousal reactions, instruction of self observation and self assessment, restructuring of environment, and cognitive affective learning. Average number |

RCCP (Continued)

| | |
|----------|---|
| | of sessions for comparison group was 33 of 90 minutes duration over a 4.5 year intervention period. Average number of sessions for the intervention group was 62 sessions over 4.5 years. Duration of follow up - 4.5 years |
| Outcomes | Cardiac mortality, non-fatal MI, Type A behaviour. |
| Notes | |

Stern

| | |
|---------------|---|
| Methods | RCT Block randomisation. |
| Participants | Documented MI between 6 weeks and 1 year. Identified levels of psychopathology as selection criteria, threshold - Taylor Manifest Anxiety Scale of 19+, Zung Depression Scale of 40+. 64 patients randomised. Patients aged 30-69 years, 80% men |
| Interventions | Includes stress management intervention. Complex psychological intervention. SM training included Jacobsen relaxation exercises, group counselling and discussions on stress and type A behaviour, and other risk factors. Patients randomised to an exercise group, group counselling group, or control. Group counselling intervention administered by psychiatrist, nurse and social worker - 1 session/week of 60-75 Min for 12 weeks. Patients encouraged to do relaxation exercises at least twice daily at home, follow up period 12 months. Control - usual medical care - patients were requested not to join and exercise programme or attend counselling |
| Outcomes | Total mortality, non-fatal MI, CABG. Data incomplete for anxiety and depression |
| Notes | |

Thompson

| | |
|---------------|--|
| Methods | RCT Block randomisation. |
| Participants | Uncomplicated first MI, recruited from CCU. No identified levels of psychopathology prior to intervention. 60 men randomised (and their wives), less than 65 years. Data reported for patients only |
| Interventions | In-hospital counselling intervention offering structured support and education on risk factors. Counselling focused on patients and spouses reactions to the MI. Four 30 minute sessions of counselling whilst in CCU. Control group received usual medical care. Follow up 6 months |
| Outcomes | Anxiety and depression |
| Notes | |

Toobert

| | |
|---------------|--|
| Methods | RCT |
| Participants | Documented chronic CHD (mean time since diagnosis 11 years), participants recruited via advertisements. 28 participants randomised, mean age 63 years, all women |
| Interventions | Includes stress management intervention. Single psychological intervention plus other rehabilitation interventions. Intervention included Hatha Yoga, progressive deep relaxation, meditation administered by a trained yoga instructor. Other rehabilitation interventions as for Ornish (lifestyle heart trial - strict vegetarian diet, exercise, SM). 7 day retreat where yoga performed twice daily, and 2 weekly meetings of 4 hours each. Group discussions, yoga and relaxation continued twice a week for 6 months and 1/month for 3 months. Participants requested to continue at home for 1 hour per day. Control group - usual medical care. Follow up 12 months |
| Outcomes | Anxiety, depression and perceived stress. |
| Notes | |

Van Dixhoorn

| | |
|---------------|--|
| Methods | RCT |
| Participants | Acute MI - patients randomised within 1 month of event. No identified levels of psychopathology prior to intervention. 156 patients randomised, mean age 55.5 years, 94% men |
| Interventions | Includes stress management intervention. Single psychological intervention plus other rehabilitation interventions. Intervention group received relaxation training (biofeedback frontalis muscle tension, breathing) and exercise training. Intervention administered by trained therapists. Control group received the exercise intervention only. Relaxation training included 1 session of 1 hour per week for 6 weeks, and patients were also instructed to practise at home. Follow up - 5 years |
| Outcomes | Cardiac mortality, non-fatal MI, cardiac surgery. |
| Notes | |

Vermeulen

| | |
|---------------|--|
| Methods | RCT |
| Participants | MI patients. Patients randomised 6 weeks after hospital discharge. No identified levels of psychopathology prior to intervention. 98 patients randomised, all men, mean age 49 years |
| Interventions | Comprehensive cardiac rehabilitation. Mentions psychological intervention, but no details given. Duration of follow-up 5 years |
| Outcomes | Cardiac mortality, non-fatal MI, smoking, serum cholesterol. |
| Notes | |

RCT - randomised controlled trial

CHD - coronary heart disease
 SM - stress management
 MI - myocardial infarction
 CABG - coronary artery bypass graft
 PTCA - percutaneous transluminal angioplasty
 GHQ - general health questionnaire
 SD - standard deviation
 HRQoL - health related quality of life
 CCR - comprehensive cardiac rehabilitation
 CHF - congestive heart failure
 CCU - coronary care unit
 VF - ventricular fibrillation
 HR - heart rate
 RR - respiratory rate
 CV - cardiovascular
 HE - health education

Characteristics of excluded studies *[ordered by study ID]*

| Study | Reason for exclusion |
|----------------|---|
| Amerosa Tupler | Follow up period too short. |
| Ashton | Follow up period too short. |
| Beresnevaite | Usual care group recieved and intervention not recieved by the intervention group |
| Blankfield | Follow up period too short. |
| Blumenthal | Not a RCT. |
| Bundy | Follow up period too short. |
| Clark | Not all patients recieved the intervention, very few chose the stress management intervention |
| Egger | Not a RCT. |
| Elliot | Follow up period too short. |
| Fielding | Follow up period too short. |
| Fletcher | No relevant outcomes. |
| Garding | Follow up period too short. |
| Gidron | Follow up period too short. |

(Continued)

| | |
|------------------|--|
| Gortner | Data for intervention and control groups not reported, and subsequently groups combined for a “cohort ” analysis |
| Gruen | Follow up period too short. |
| Guzzetta | Follow up period too short. |
| Heller | Intervention not administered by trained staff. |
| Horlick | No follow up data reported. |
| Israelsson | No relevant outcomes. |
| Langosch | Not a RCT. |
| Naismith | No relevant outcomes. |
| Ohm | No relevant outcomes. |
| Oldridge | Specifically states that staff administering intervention were not trained |
| Rakov | No relevant outcomes. Russian translation. |
| Schindler | Follow up period too short. |
| Taylor | Not all patients recieved the intervention, unclear how many |
| Thomas | Follow up period too short. |
| Trzcieńska-Green | Follow up period too short - controls were offered treatment after 10 weeks |
| Turner | Unclear when the follow up assessment is - likely too short. Feasibility study not designed to show differences between intervention and control, but the power of the intervention. For this reason patients are randomised 2:1 to the intervention. Very small sample size, with very high drop-out rates, particularly in the control group |
| Zamarra | Not a RCT. |

Characteristics of ongoing studies [ordered by study ID]

CORE

| | |
|---------------------|---|
| Trial name or title | Akershus Comprehensive Cardiac Rehabilitation Trial (the CORE Study) |
| Methods | |

CORE (Continued)

| | |
|---------------------|---|
| Participants | RCT set in Akershus County, Oslo. 500 patients randomised, aged 40-85 years after MI, CABG, PTCA or stabilized acute coronary syndrome. Pragmatic trial - intervention offered to a heterogeneous group of patients |
| Interventions | Comprehensive cardiac rehabilitation including structured counselling to modify risk factors and brief counselling will be offered individually at 6 months |
| Outcomes | Special emphasis on the assessment of quality of life |
| Starting date | April 2000. Follow up should be complete by April 2004 |
| Contact information | Study design described at http://cvm.controlled-trials.com/content/1/3/177 |
| Notes | |

DATA AND ANALYSES

Comparison 1. Any psychological intervention +/- other rehabilitation vs control (usual care/other rehabilitation)

| Outcome or subgroup title | No. of studies | No. of participants | Statistical method | Effect size |
|--|----------------|---------------------|-------------------------------------|----------------------|
| 1 Total Mortality | 22 | 10634 | Odds Ratio (M-H, Fixed, 95% CI) | 0.93 [0.81, 1.06] |
| 2 Cardiac Mortality | 11 | 7544 | Odds Ratio (M-H, Fixed, 95% CI) | 0.86 [0.72, 1.03] |
| 3 Non-fatal MI | 18 | 10200 | Odds Ratio (M-H, Fixed, 95% CI) | 0.78 [0.67, 0.90] |
| 4 Revascularisation (CABG and PTCA combined) | 15 | 8368 | Odds Ratio (M-H, Fixed, 95% CI) | 0.90 [0.78, 1.02] |
| 5 Total Cholesterol | 9 | 1525 | Mean Difference (IV, Fixed, 95% CI) | -0.28 [-0.37, -0.19] |
| 6 LDL Cholesterol | 4 | 748 | Mean Difference (IV, Fixed, 95% CI) | -0.44 [-0.56, -0.32] |
| 7 HDL Cholesterol | 5 | 1187 | Mean Difference (IV, Fixed, 95% CI) | 0.05 [0.01, 0.08] |
| 8 Triglycerides | 4 | 645 | Mean Difference (IV, Fixed, 95% CI) | -0.03 [-0.22, 0.17] |
| 9 Systolic Blood Pressure | 5 | 805 | Mean Difference (IV, Fixed, 95% CI) | -3.17 [-5.31, -1.04] |
| 10 Diastolic Blood Pressure | 5 | 805 | Mean Difference (IV, Fixed, 95% CI) | -1.83 [-3.35, -0.32] |
| 11 Smoking | 8 | 3690 | Odds Ratio (M-H, Fixed, 95% CI) | 0.98 [0.84, 1.15] |
| 12 Anxiety | 9 | 2756 | Mean Difference (IV, Fixed, 95% CI) | -0.17 [-0.34, 0.01] |
| 13 Depression | 11 | 4535 | Mean Difference (IV, Fixed, 95% CI) | -0.42 [-0.64, -0.19] |
| 14 Psychosocial composite measures | 5 | 347 | Mean Difference (IV, Fixed, 95% CI) | -2.71 [-5.55, 0.12] |

Comparison 2. Any stress management intervention +/- other rehabilitation vs control (usual care/other rehabilitation)

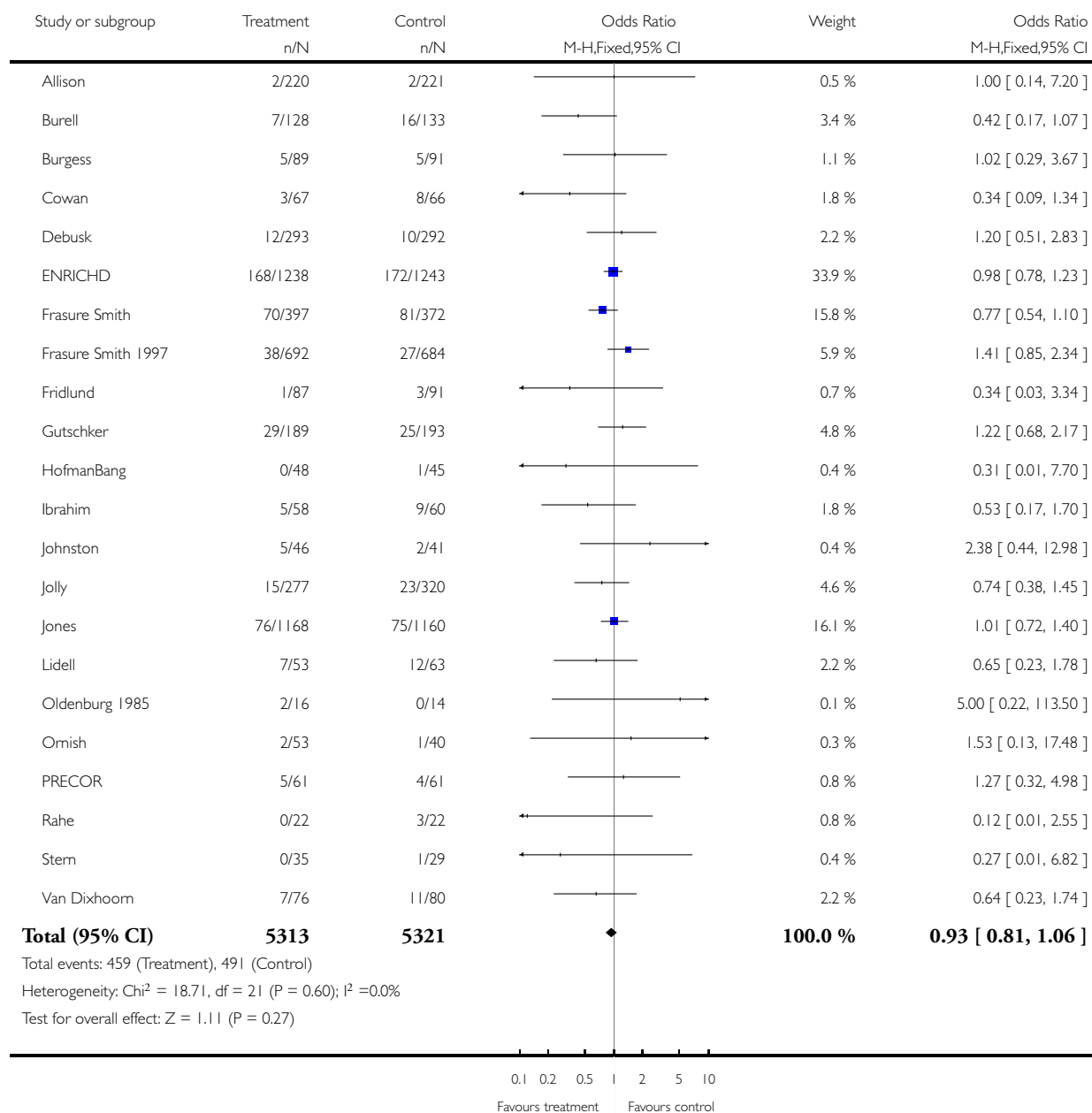
| Outcome or subgroup title | No. of studies | No. of participants | Statistical method | Effect size |
|--|----------------|---------------------|-------------------------------------|---------------------|
| 1 Total Mortality | 10 | 3425 | Odds Ratio (M-H, Fixed, 95% CI) | 0.88 [0.67, 1.15] |
| 2 Cardiac Mortality | 4 | 1412 | Odds Ratio (M-H, Fixed, 95% CI) | 0.62 [0.38, 0.99] |
| 3 Non-fatal MI | 8 | 3990 | Odds Ratio (M-H, Fixed, 95% CI) | 0.69 [0.52, 0.92] |
| 4 Revascularisation (CABG and PTCA combined) | 7 | 3025 | Odds Ratio (M-H, Fixed, 95% CI) | 0.80 [0.59, 1.08] |
| 5 Total Cholesterol | 4 | 634 | Mean Difference (IV, Fixed, 95% CI) | 0.02 [-0.12, 0.15] |
| 6 LDL Cholesterol | 2 | 115 | Mean Difference (IV, Fixed, 95% CI) | 0.18 [-0.08, 0.43] |
| 7 HDL Cholesterol | 3 | 554 | Mean Difference (IV, Fixed, 95% CI) | 0.06 [0.02, 0.10] |
| 8 Triglycerides | 2 | 115 | Mean Difference (IV, Fixed, 95% CI) | 0.21 [-0.28, 0.70] |
| 9 Systolic Blood Pressure | 2 | 468 | Mean Difference (IV, Fixed, 95% CI) | 0.04 [-3.59, 3.67] |
| 10 Diastolic Blood Pressure | 2 | 468 | Mean Difference (IV, Fixed, 95% CI) | -1.17 [-3.56, 1.23] |
| 11 Smoking | 3 | 2472 | Odds Ratio (M-H, Fixed, 95% CI) | 1.03 [0.85, 1.24] |
| 12 Anxiety | 7 | 2651 | Mean Difference (IV, Fixed, 95% CI) | -0.15 [-0.33, 0.03] |
| 13 Depression | 8 | 2642 | Mean Difference (IV, Fixed, 95% CI) | -0.18 [-0.42, 0.06] |
| 14 Psychological composite measures | 5 | 347 | Mean Difference (IV, Fixed, 95% CI) | -2.71 [-5.55, 0.12] |

Analysis 1.1. Comparison 1 Any psychological intervention +/- other rehabilitation vs control (usual care/other rehabilitation), Outcome 1 Total Mortality.

Review: Psychological interventions for coronary heart disease

Comparison: 1 Any psychological intervention +/- other rehabilitation vs control (usual care/other rehabilitation)

Outcome: 1 Total Mortality

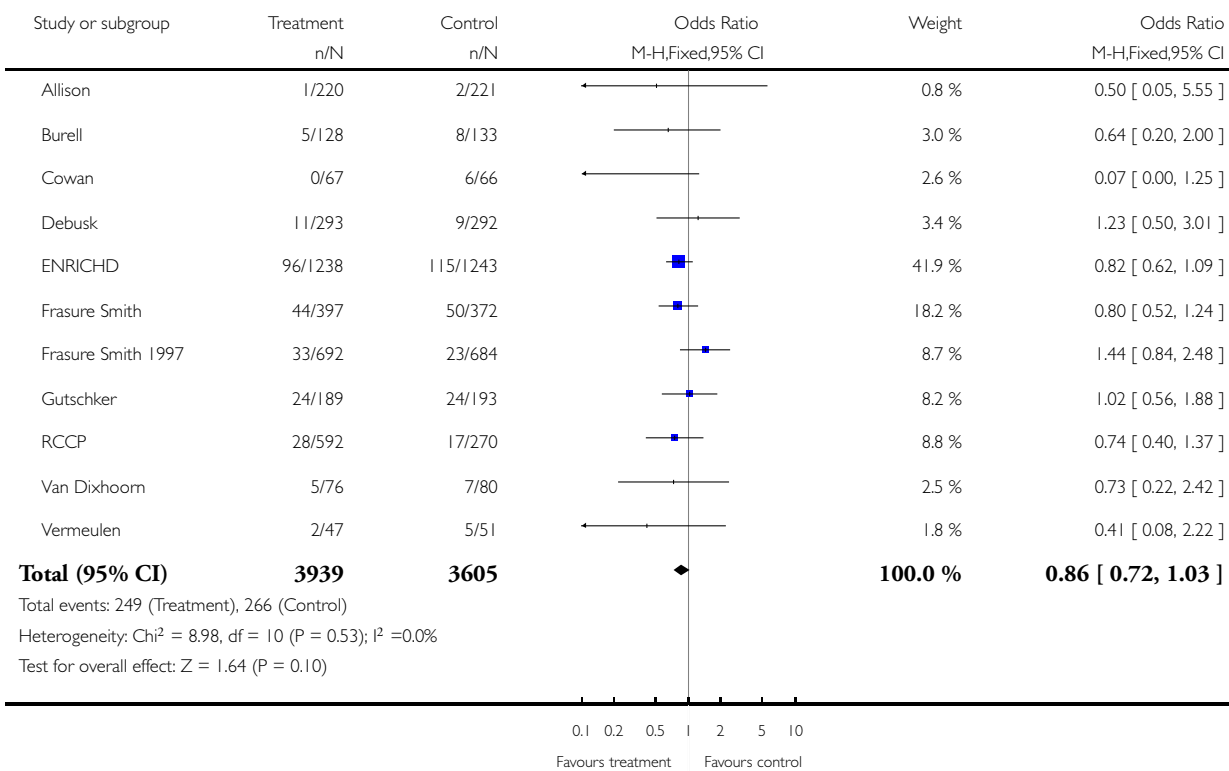


Analysis 1.2. Comparison 1 Any psychological intervention +/- other rehabilitation vs control (usual care/other rehabilitation), Outcome 2 Cardiac Mortality.

Review: Psychological interventions for coronary heart disease

Comparison: 1 Any psychological intervention +/- other rehabilitation vs control (usual care/other rehabilitation)

Outcome: 2 Cardiac Mortality

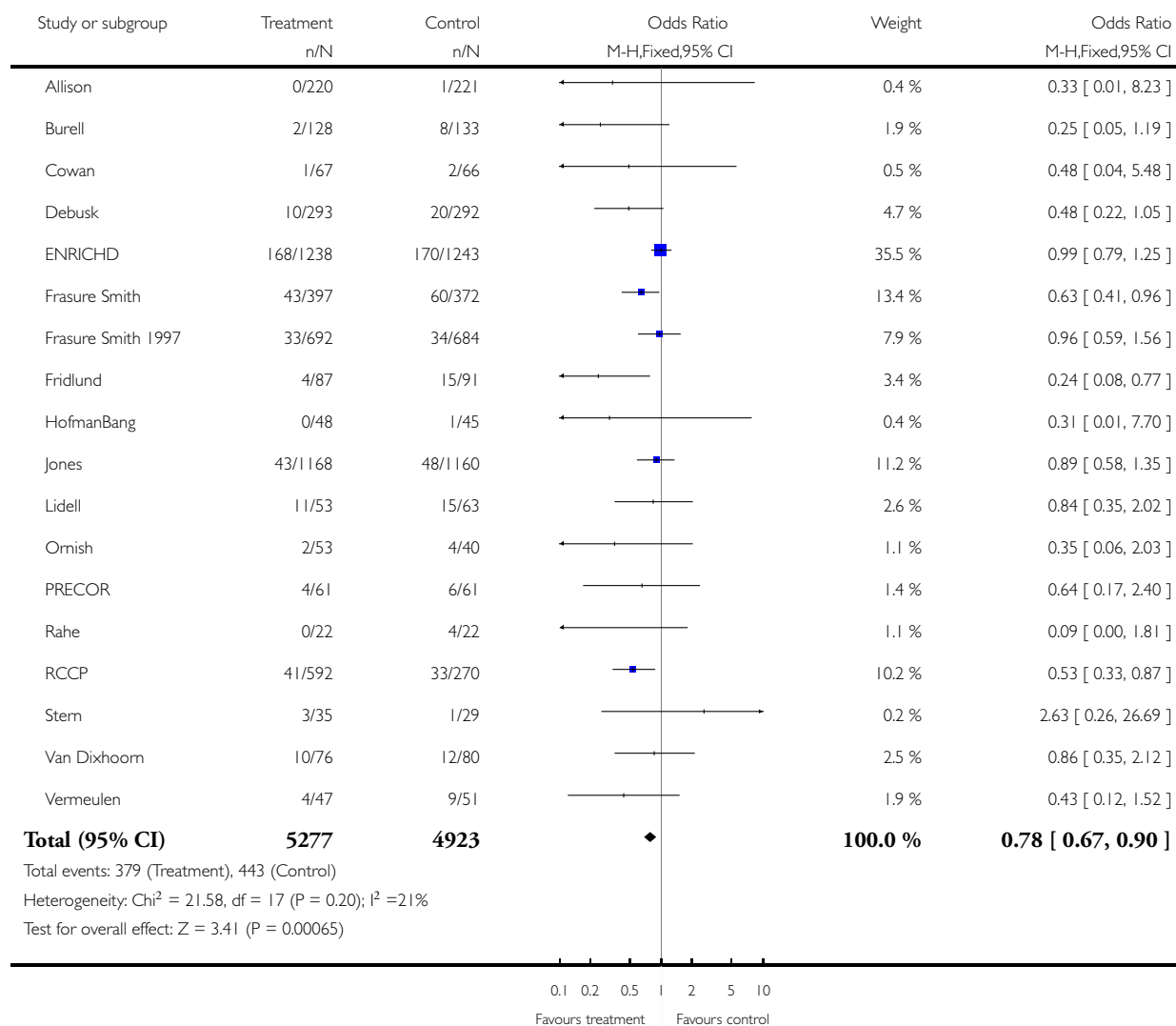


Analysis 1.3. Comparison 1 Any psychological intervention +/- other rehabilitation vs control (usual care/other rehabilitation), Outcome 3 Non-fatal MI.

Review: Psychological interventions for coronary heart disease

Comparison: 1 Any psychological intervention +/- other rehabilitation vs control (usual care/other rehabilitation)

Outcome: 3 Non-fatal MI

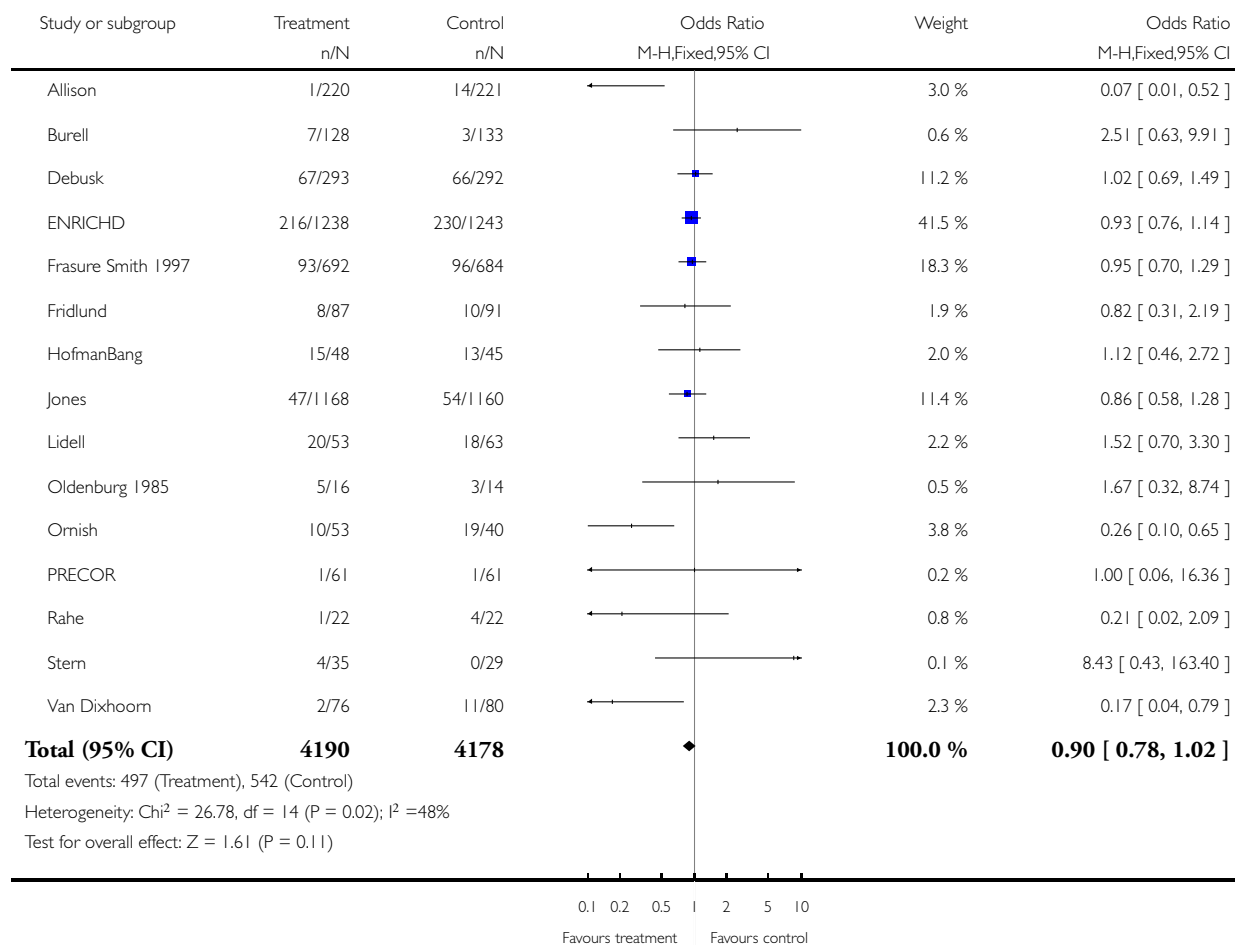


Analysis 1.4. Comparison 1 Any psychological intervention +/- other rehabilitation vs control (usual care/other rehabilitation), Outcome 4 Revascularisation (CABG and PTCA combined).

Review: Psychological interventions for coronary heart disease

Comparison: 1 Any psychological intervention +/- other rehabilitation vs control (usual care/other rehabilitation)

Outcome: 4 Revascularisation (CABG and PTCA combined)

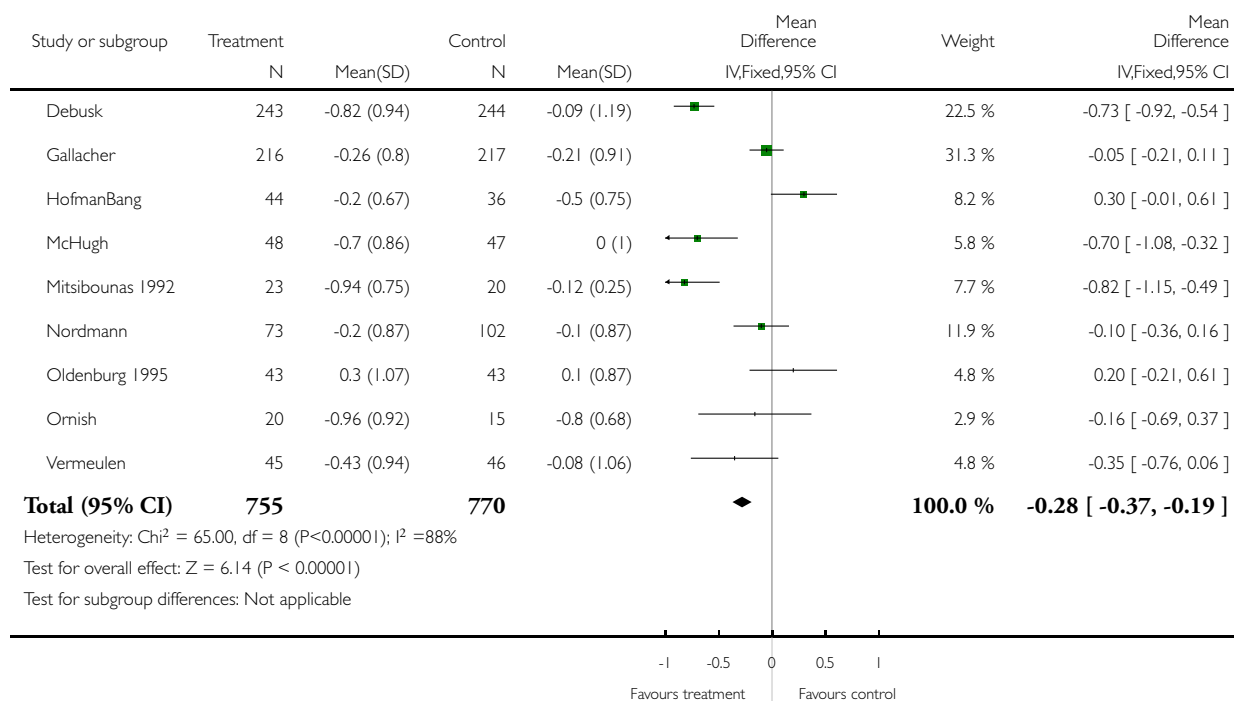


Analysis 1.5. Comparison 1 Any psychological intervention +/- other rehabilitation vs control (usual care/other rehabilitation), Outcome 5 Total Cholesterol.

Review: Psychological interventions for coronary heart disease

Comparison: 1 Any psychological intervention +/- other rehabilitation vs control (usual care/other rehabilitation)

Outcome: 5 Total Cholesterol

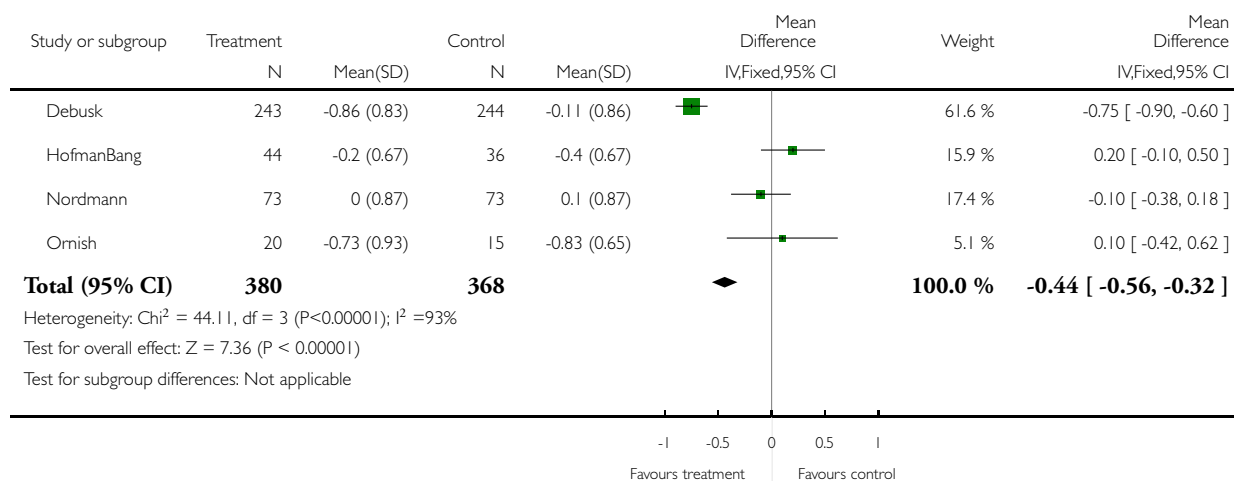


Analysis 1.6. Comparison 1 Any psychological intervention +/- other rehabilitation vs control (usual care/other rehabilitation), Outcome 6 LDL Cholesterol.

Review: Psychological interventions for coronary heart disease

Comparison: 1 Any psychological intervention +/- other rehabilitation vs control (usual care/other rehabilitation)

Outcome: 6 LDL Cholesterol

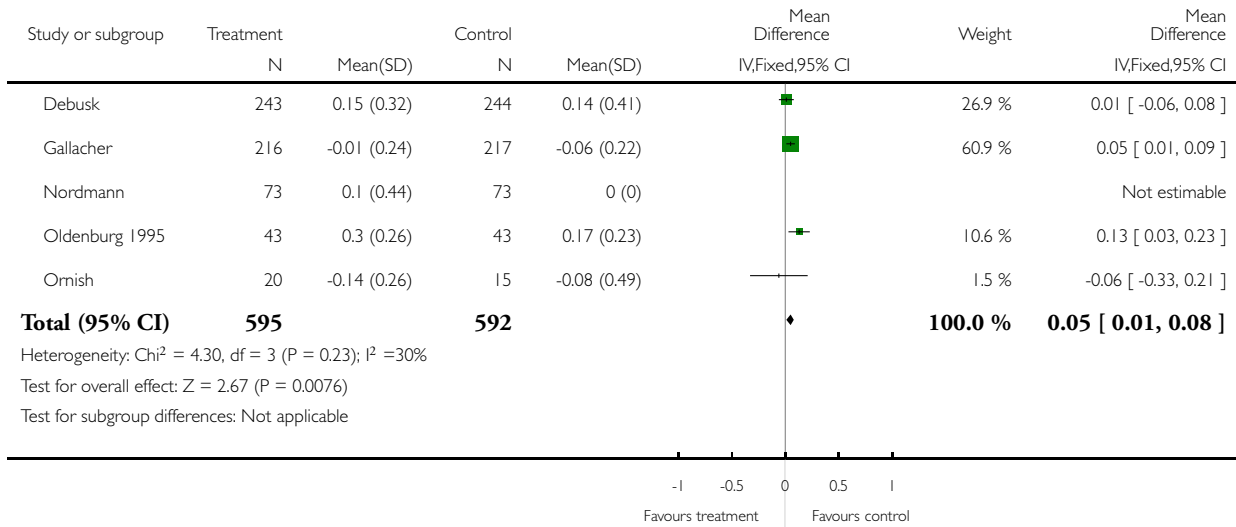


Analysis 1.7. Comparison 1 Any psychological intervention +/- other rehabilitation vs control (usual care/other rehabilitation), Outcome 7 HDL Cholesterol.

Review: Psychological interventions for coronary heart disease

Comparison: 1 Any psychological intervention +/- other rehabilitation vs control (usual care/other rehabilitation)

Outcome: 7 HDL Cholesterol

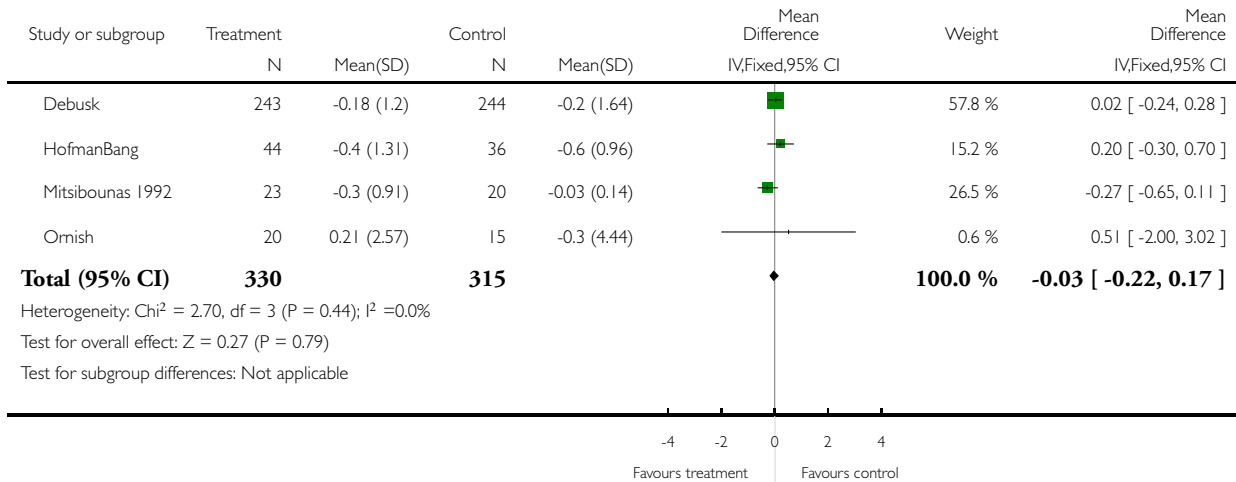


Analysis 1.8. Comparison 1 Any psychological intervention +/- other rehabilitation vs control (usual care/other rehabilitation), Outcome 8 Triglycerides.

Review: Psychological interventions for coronary heart disease

Comparison: 1 Any psychological intervention +/- other rehabilitation vs control (usual care/other rehabilitation)

Outcome: 8 Triglycerides

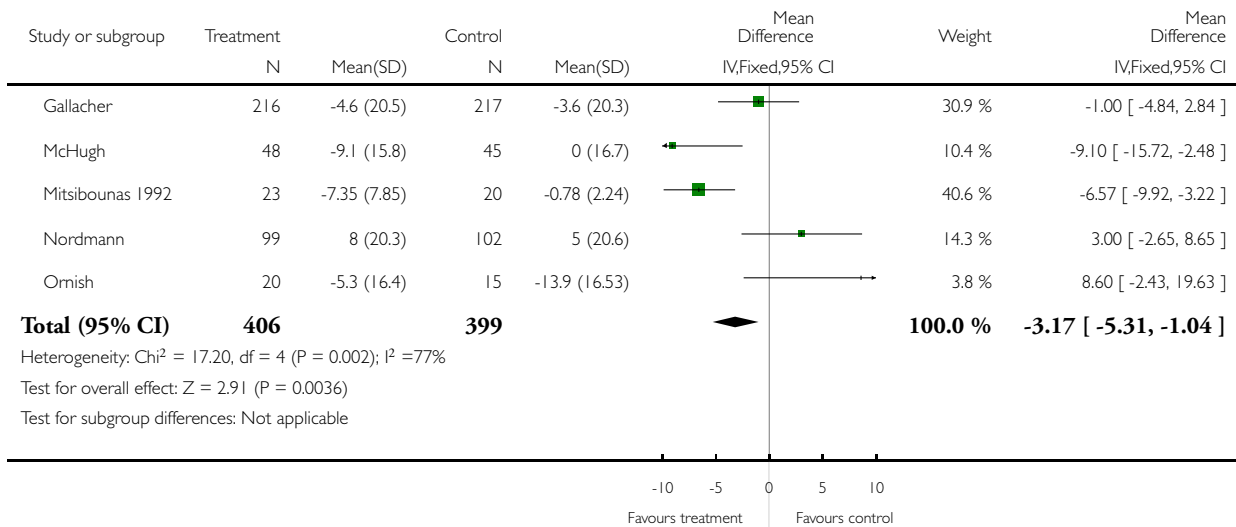


Analysis 1.9. Comparison 1 Any psychological intervention +/- other rehabilitation vs control (usual care/other rehabilitation), Outcome 9 Systolic Blood Pressure.

Review: Psychological interventions for coronary heart disease

Comparison: 1 Any psychological intervention +/- other rehabilitation vs control (usual care/other rehabilitation)

Outcome: 9 Systolic Blood Pressure

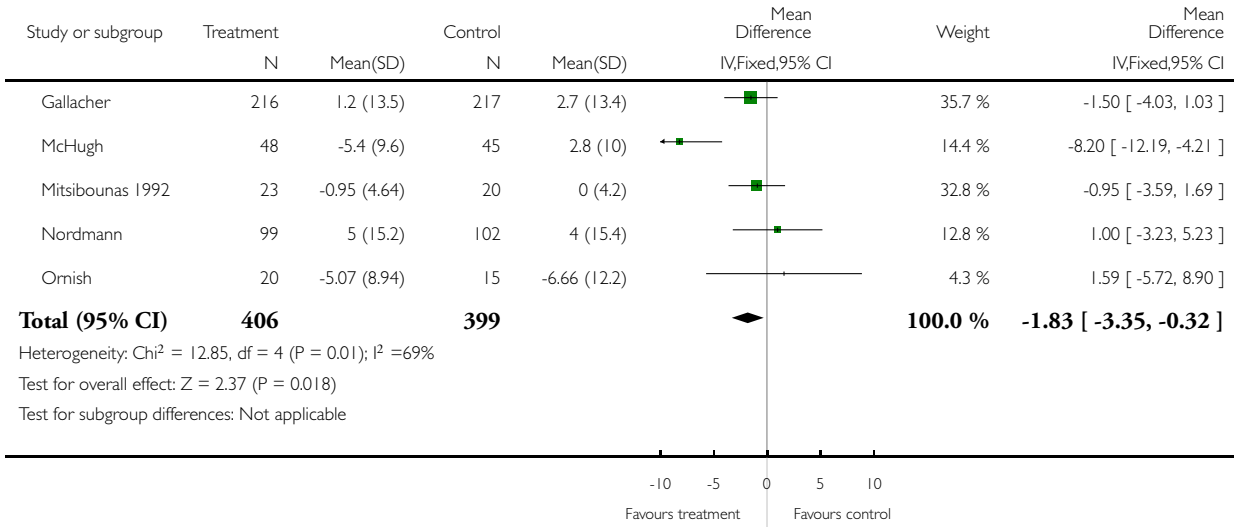


Analysis 1.10. Comparison 1 Any psychological intervention +/- other rehabilitation vs control (usual care/other rehabilitation), Outcome 10 Diastolic Blood Pressure.

Review: Psychological interventions for coronary heart disease

Comparison: 1 Any psychological intervention +/- other rehabilitation vs control (usual care/other rehabilitation)

Outcome: 10 Diastolic Blood Pressure

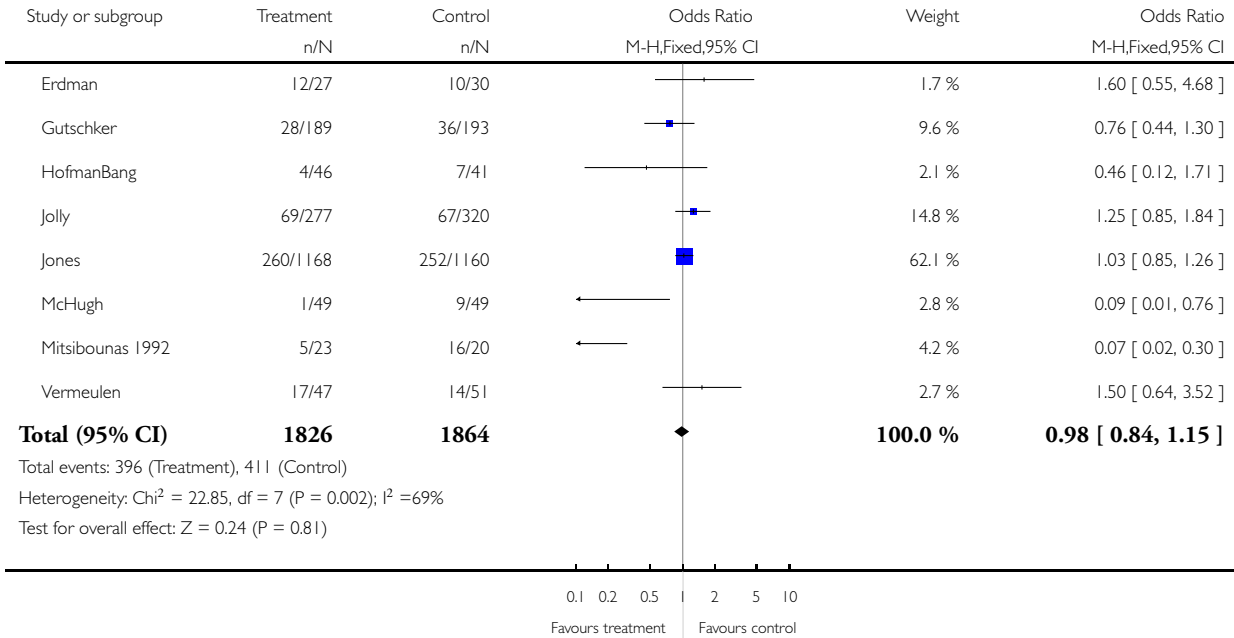


Analysis 1.11. Comparison 1 Any psychological intervention +/- other rehabilitation vs control (usual care/other rehabilitation), Outcome 11 Smoking.

Review: Psychological interventions for coronary heart disease

Comparison: 1 Any psychological intervention +/- other rehabilitation vs control (usual care/other rehabilitation)

Outcome: 11 Smoking

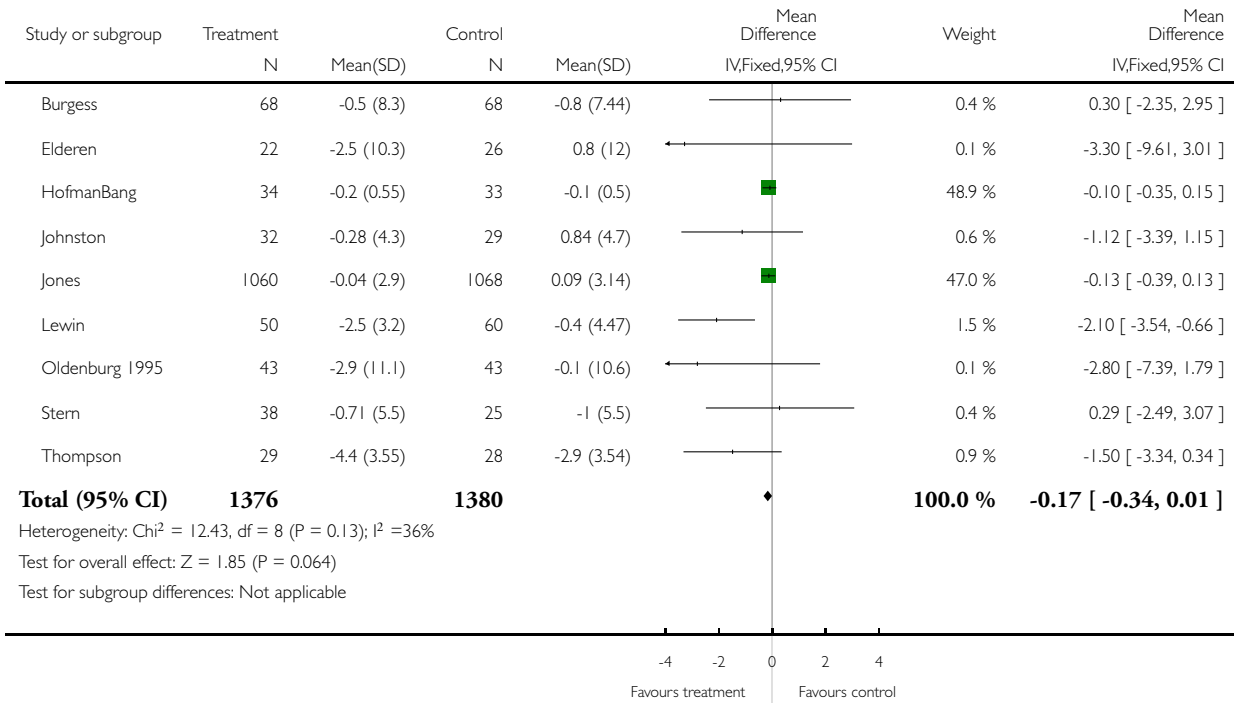


Analysis 1.12. Comparison 1 Any psychological intervention +/- other rehabilitation vs control (usual care/other rehabilitation), Outcome 12 Anxiety.

Review: Psychological interventions for coronary heart disease

Comparison: 1 Any psychological intervention +/- other rehabilitation vs control (usual care/other rehabilitation)

Outcome: 12 Anxiety

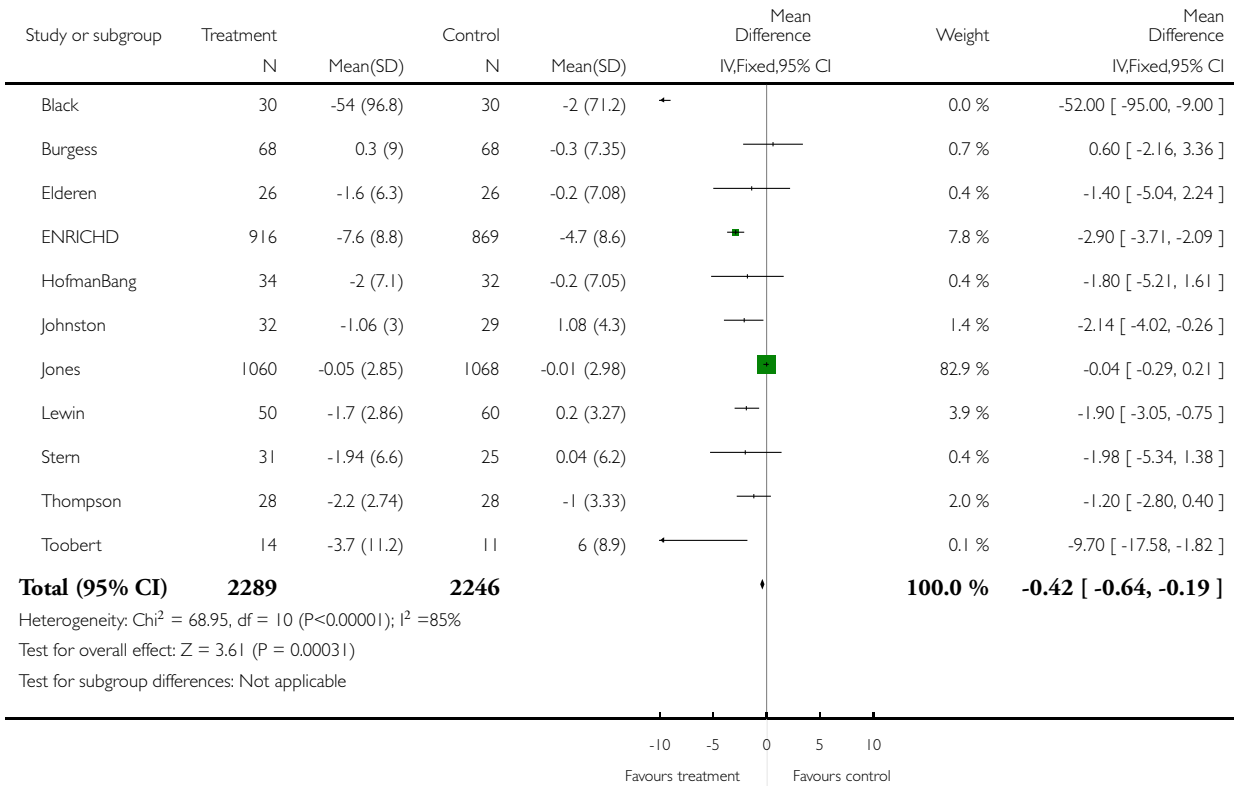


Analysis 1.13. Comparison 1 Any psychological intervention +/- other rehabilitation vs control (usual care/other rehabilitation), Outcome 13 Depression.

Review: Psychological interventions for coronary heart disease

Comparison: 1 Any psychological intervention +/- other rehabilitation vs control (usual care/other rehabilitation)

Outcome: 13 Depression

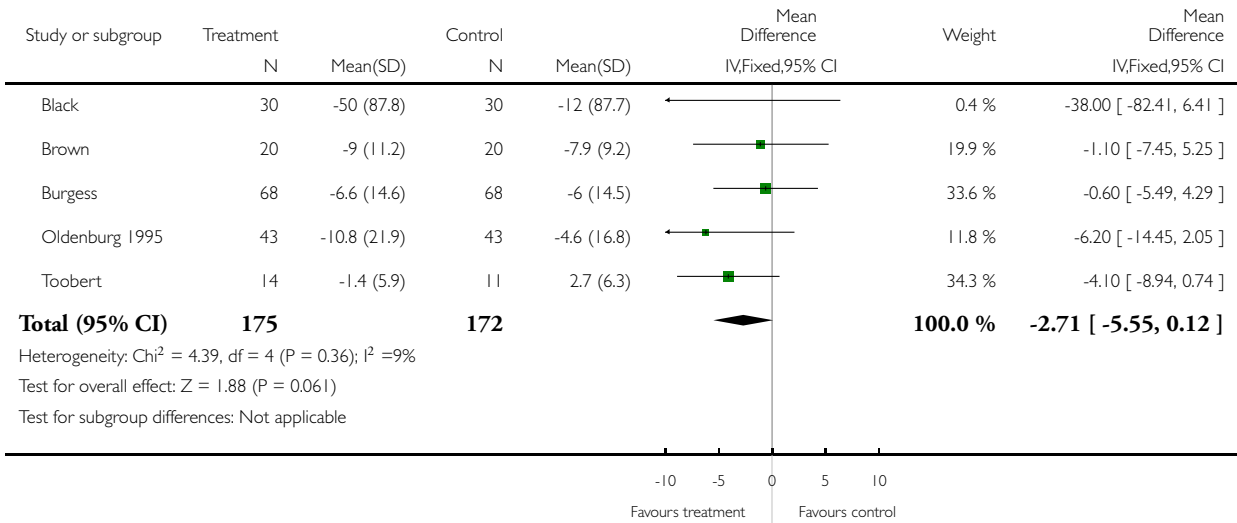


Analysis 1.14. Comparison 1 Any psychological intervention +/- other rehabilitation vs control (usual care/other rehabilitation), Outcome 14 Psychosocial composite measures.

Review: Psychological interventions for coronary heart disease

Comparison: 1 Any psychological intervention +/- other rehabilitation vs control (usual care/other rehabilitation)

Outcome: 14 Psychosocial composite measures

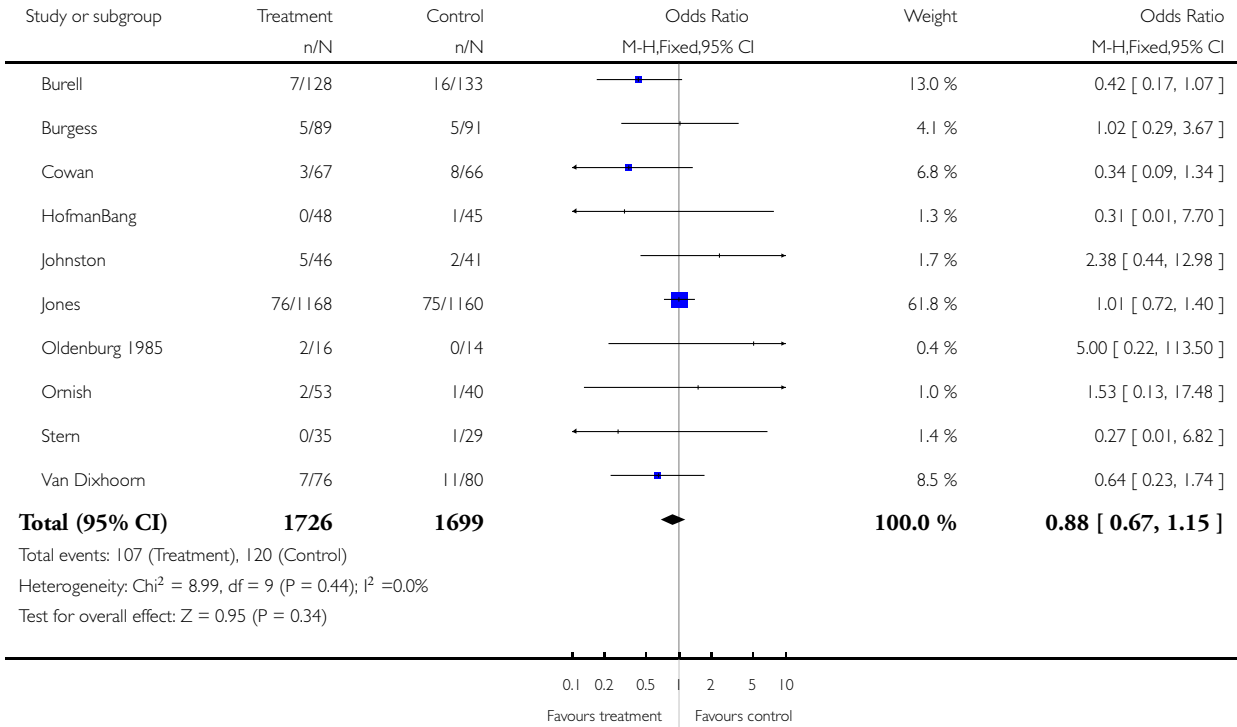


Analysis 2.1. Comparison 2 Any stress management intervention +/- other rehabilitation vs control (usual care/other rehabilitation), Outcome 1 Total Mortality.

Review: Psychological interventions for coronary heart disease

Comparison: 2 Any stress management intervention +/- other rehabilitation vs control (usual care/other rehabilitation)

Outcome: 1 Total Mortality

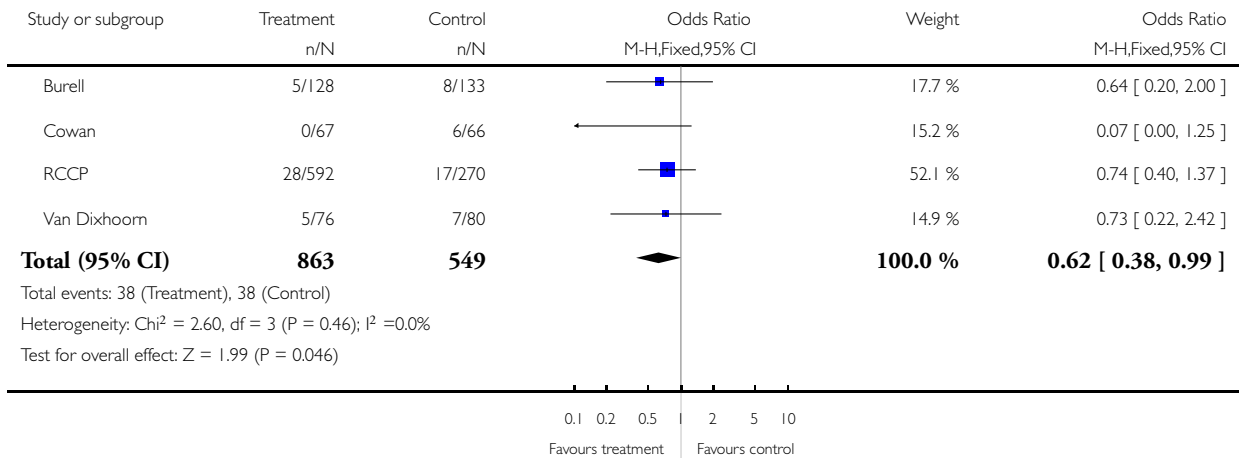


Analysis 2.2. Comparison 2 Any stress management intervention +/- other rehabilitation vs control (usual care/other rehabilitation), Outcome 2 Cardiac Mortality.

Review: Psychological interventions for coronary heart disease

Comparison: 2 Any stress management intervention +/- other rehabilitation vs control (usual care/other rehabilitation)

Outcome: 2 Cardiac Mortality

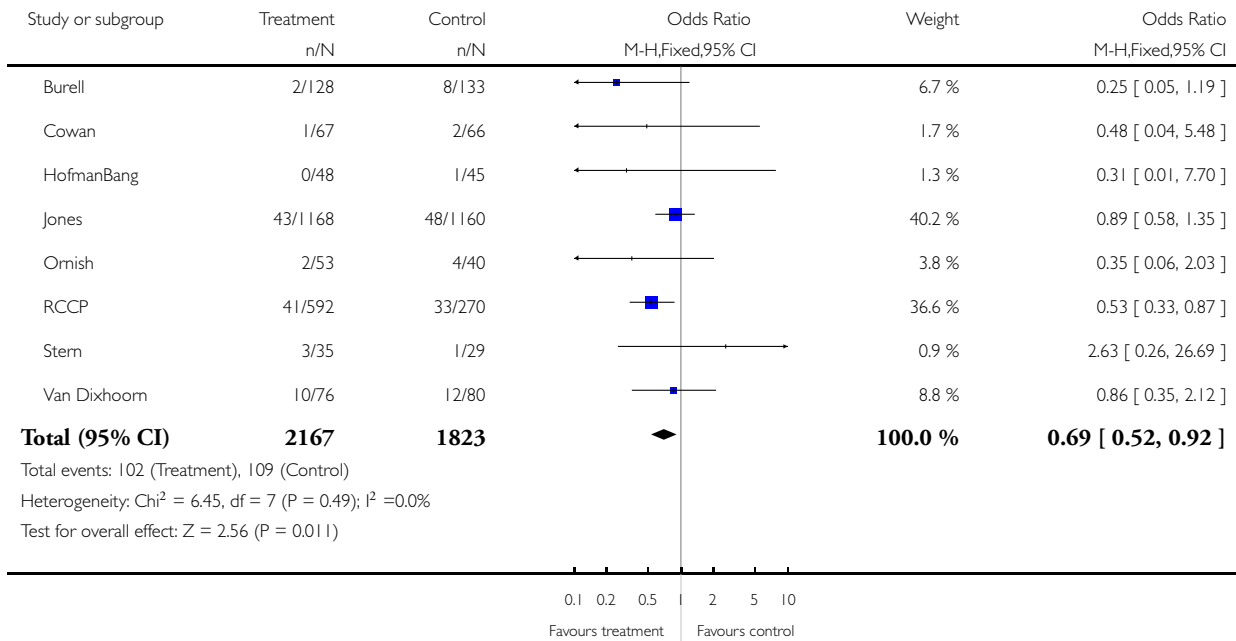


Analysis 2.3. Comparison 2 Any stress management intervention +/- other rehabilitation vs control (usual care/other rehabilitation), Outcome 3 Non-fatal MI.

Review: Psychological interventions for coronary heart disease

Comparison: 2 Any stress management intervention +/- other rehabilitation vs control (usual care/other rehabilitation)

Outcome: 3 Non-fatal MI

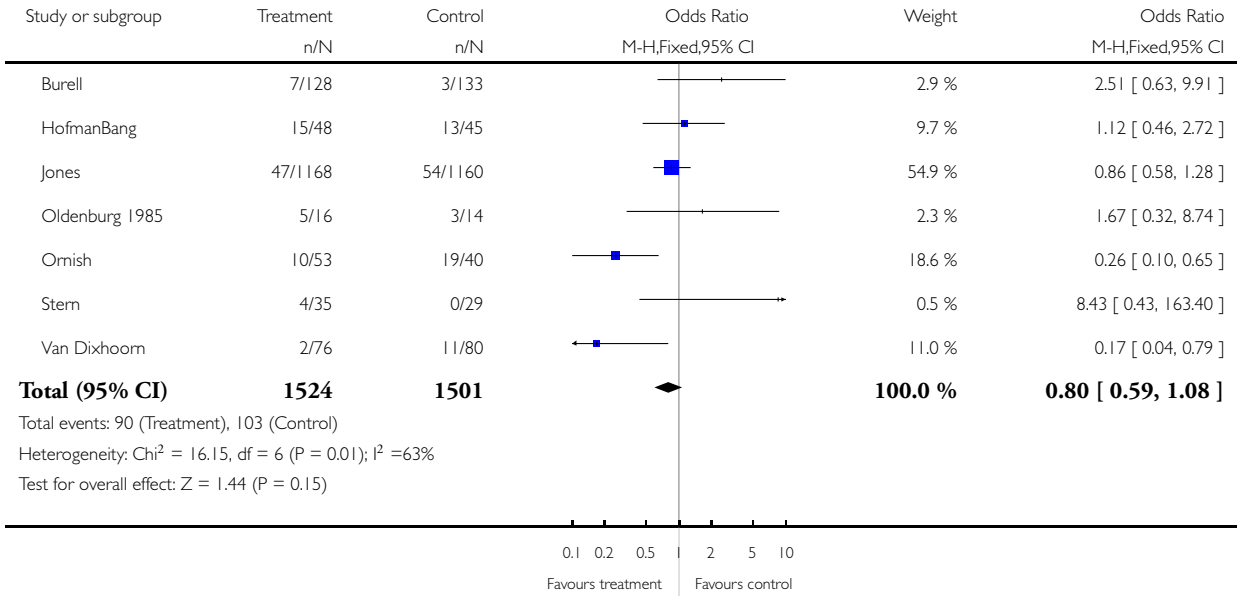


Analysis 2.4. Comparison 2 Any stress management intervention +/- other rehabilitation vs control (usual care/other rehabilitation), Outcome 4 Revascularisation (CABG and PTCA combined).

Review: Psychological interventions for coronary heart disease

Comparison: 2 Any stress management intervention +/- other rehabilitation vs control (usual care/other rehabilitation)

Outcome: 4 Revascularisation (CABG and PTCA combined)

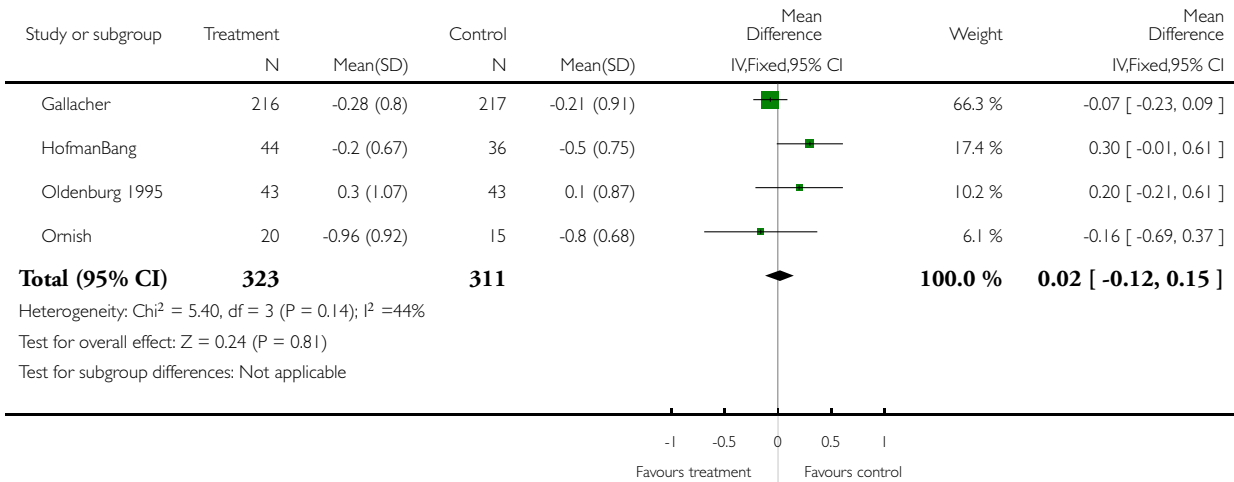


Analysis 2.5. Comparison 2 Any stress management intervention +/- other rehabilitation vs control (usual care/other rehabilitation), Outcome 5 Total Cholesterol.

Review: Psychological interventions for coronary heart disease

Comparison: 2 Any stress management intervention +/- other rehabilitation vs control (usual care/other rehabilitation)

Outcome: 5 Total Cholesterol

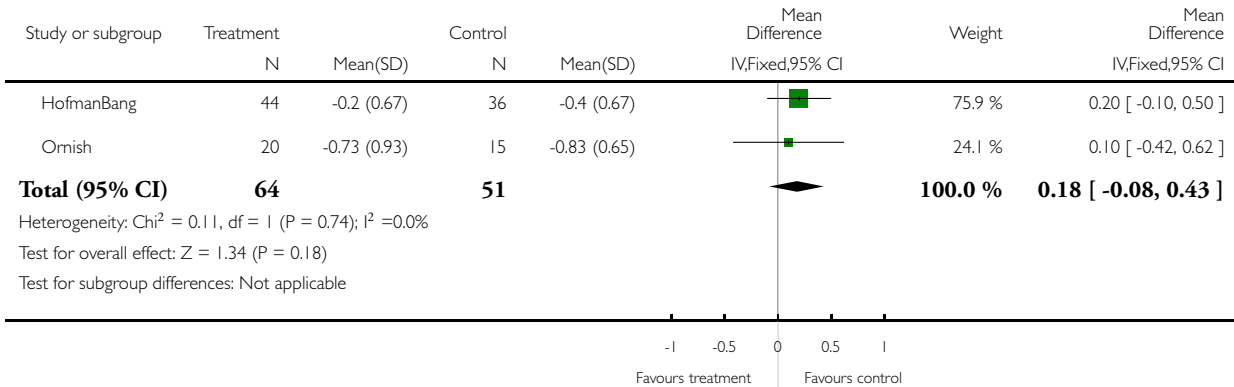


Analysis 2.6. Comparison 2 Any stress management intervention +/- other rehabilitation vs control (usual care/other rehabilitation), Outcome 6 LDL Cholesterol.

Review: Psychological interventions for coronary heart disease

Comparison: 2 Any stress management intervention +/- other rehabilitation vs control (usual care/other rehabilitation)

Outcome: 6 LDL Cholesterol

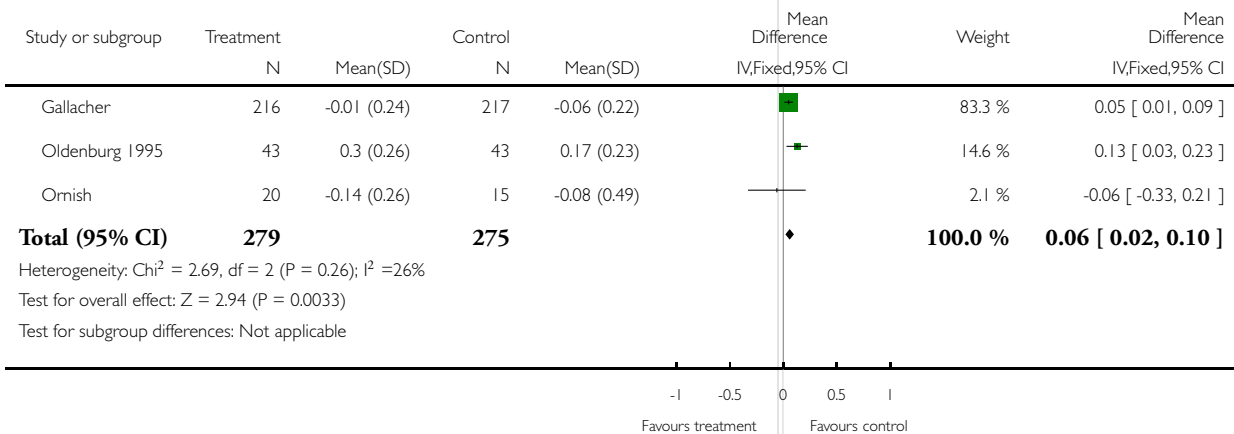


Analysis 2.7. Comparison 2 Any stress management intervention +/- other rehabilitation vs control (usual care/other rehabilitation), Outcome 7 HDL Cholesterol.

Review: Psychological interventions for coronary heart disease

Comparison: 2 Any stress management intervention +/- other rehabilitation vs control (usual care/other rehabilitation)

Outcome: 7 HDL Cholesterol

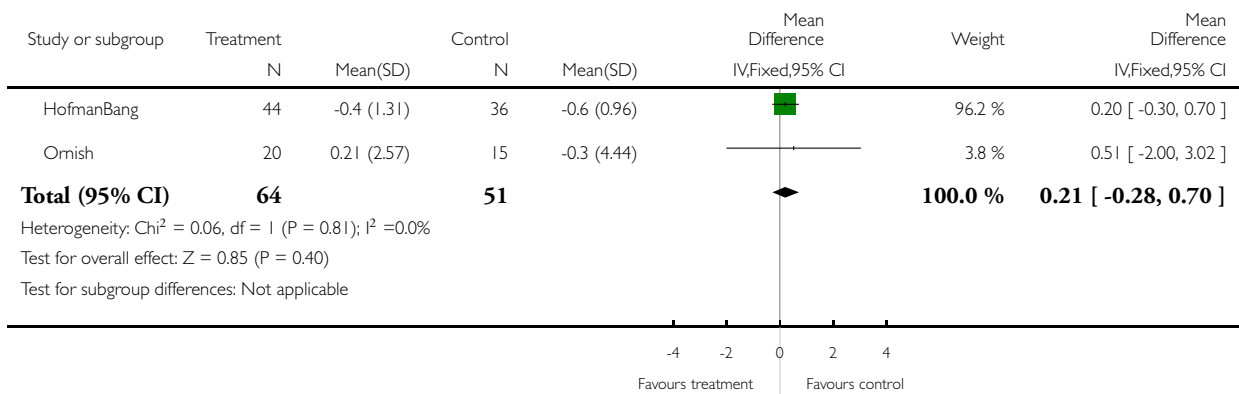


Analysis 2.8. Comparison 2 Any stress management intervention +/- other rehabilitation vs control (usual care/other rehabilitation), Outcome 8 Triglycerides.

Review: Psychological interventions for coronary heart disease

Comparison: 2 Any stress management intervention +/- other rehabilitation vs control (usual care/other rehabilitation)

Outcome: 8 Triglycerides

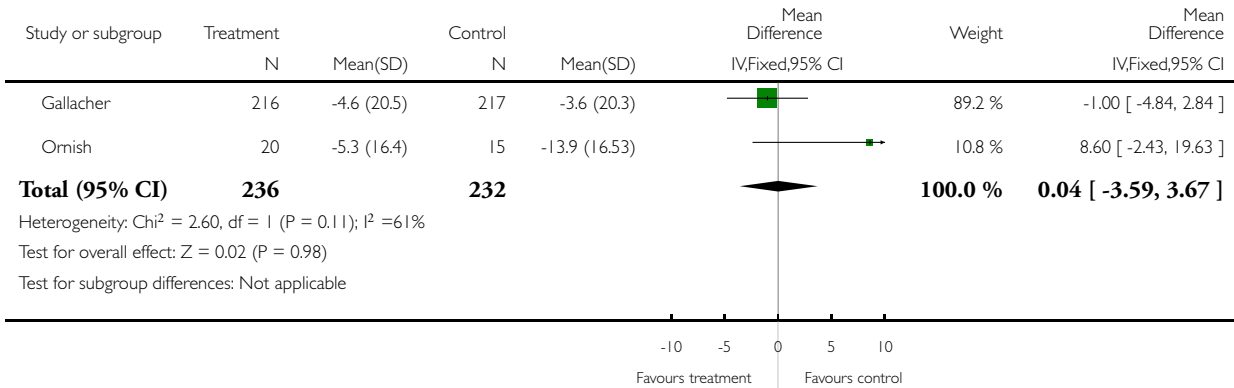


Analysis 2.9. Comparison 2 Any stress management intervention +/- other rehabilitation vs control (usual care/other rehabilitation), Outcome 9 Systolic Blood Pressure.

Review: Psychological interventions for coronary heart disease

Comparison: 2 Any stress management intervention +/- other rehabilitation vs control (usual care/other rehabilitation)

Outcome: 9 Systolic Blood Pressure

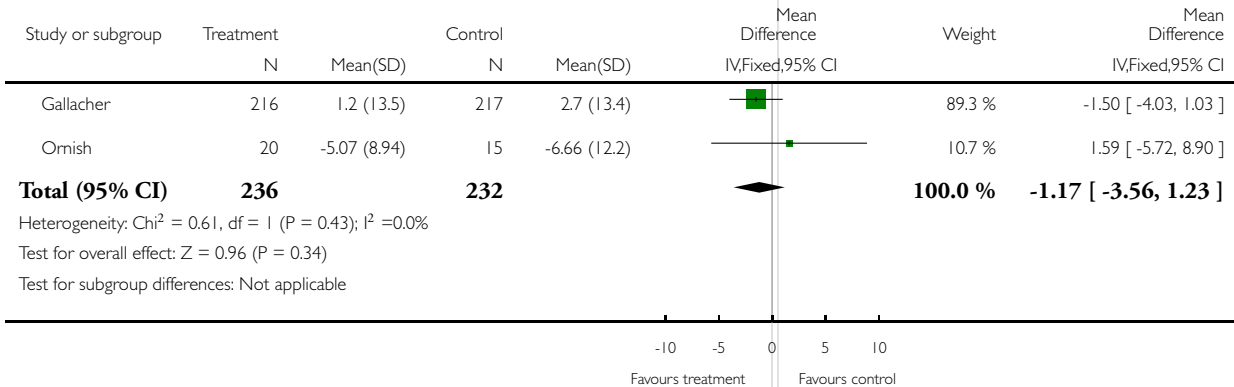


Analysis 2.10. Comparison 2 Any stress management intervention +/- other rehabilitation vs control (usual care/other rehabilitation), Outcome 10 Diastolic Blood Pressure.

Review: Psychological interventions for coronary heart disease

Comparison: 2 Any stress management intervention +/- other rehabilitation vs control (usual care/other rehabilitation)

Outcome: 10 Diastolic Blood Pressure

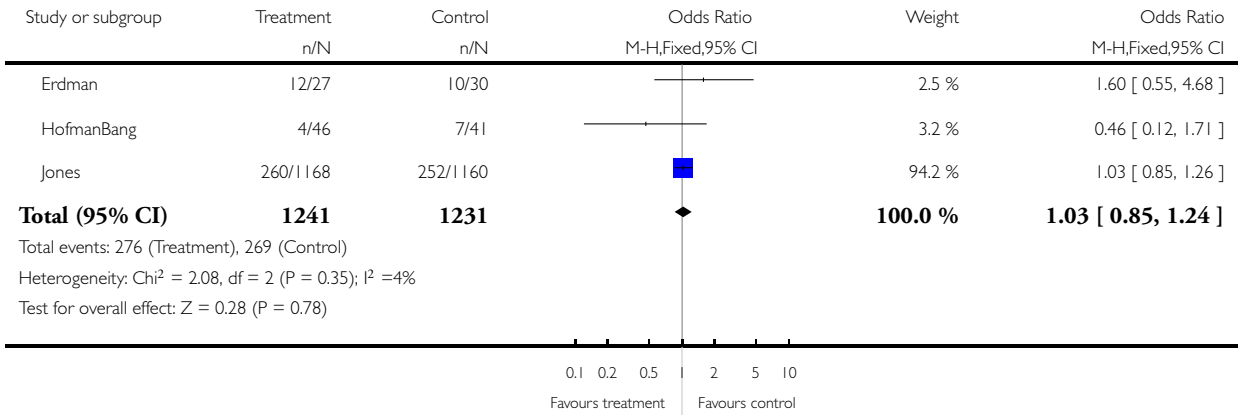


Analysis 2.11. Comparison 2 Any stress management intervention +/- other rehabilitation vs control (usual care/other rehabilitation), Outcome 11 Smoking.

Review: Psychological interventions for coronary heart disease

Comparison: 2 Any stress management intervention +/- other rehabilitation vs control (usual care/other rehabilitation)

Outcome: 11 Smoking

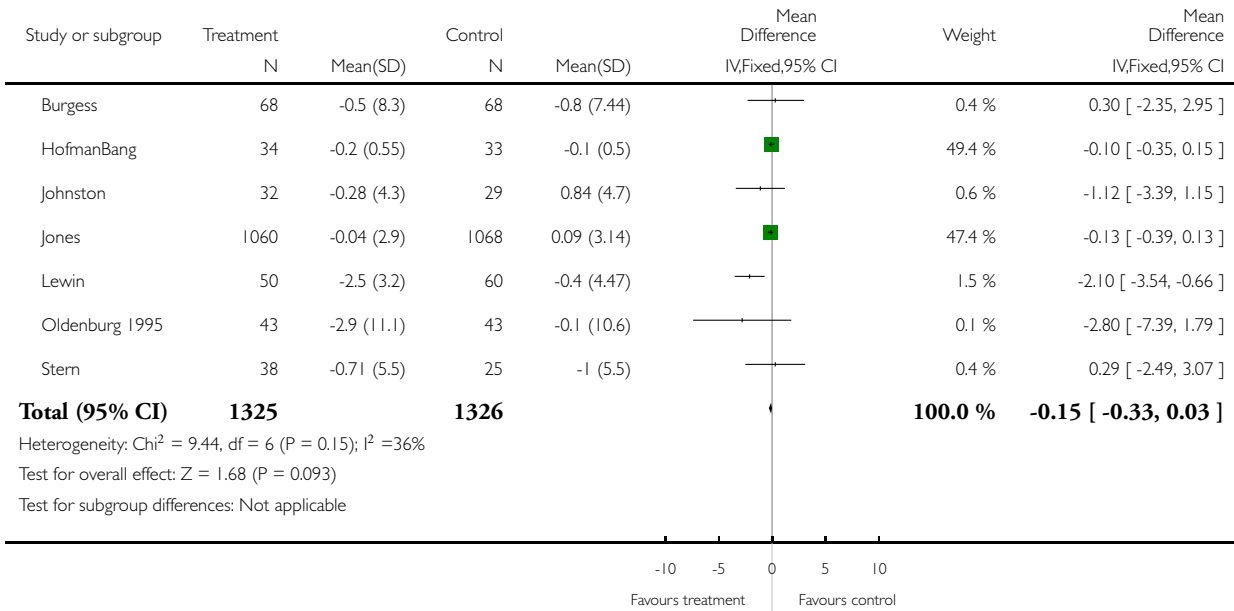


Analysis 2.12. Comparison 2 Any stress management intervention +/- other rehabilitation vs control (usual care/other rehabilitation), Outcome 12 Anxiety.

Review: Psychological interventions for coronary heart disease

Comparison: 2 Any stress management intervention +/- other rehabilitation vs control (usual care/other rehabilitation)

Outcome: 12 Anxiety

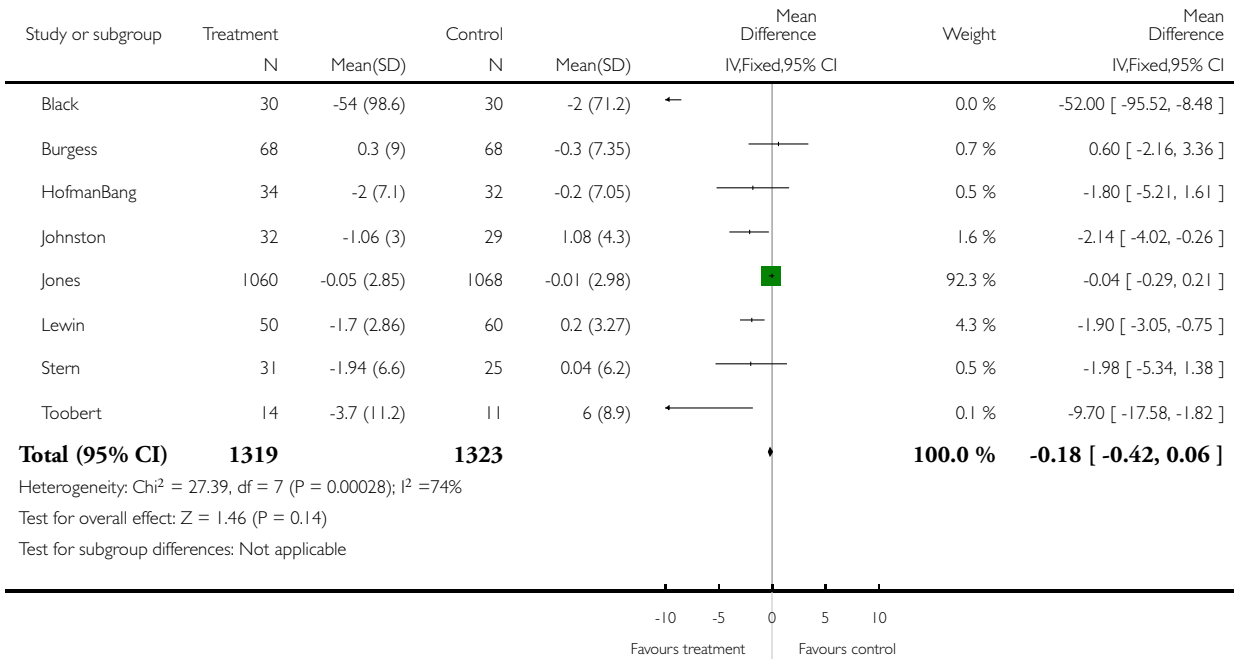


Analysis 2.13. Comparison 2 Any stress management intervention +/- other rehabilitation vs control (usual care/other rehabilitation), Outcome 13 Depression.

Review: Psychological interventions for coronary heart disease

Comparison: 2 Any stress management intervention +/- other rehabilitation vs control (usual care/other rehabilitation)

Outcome: 13 Depression

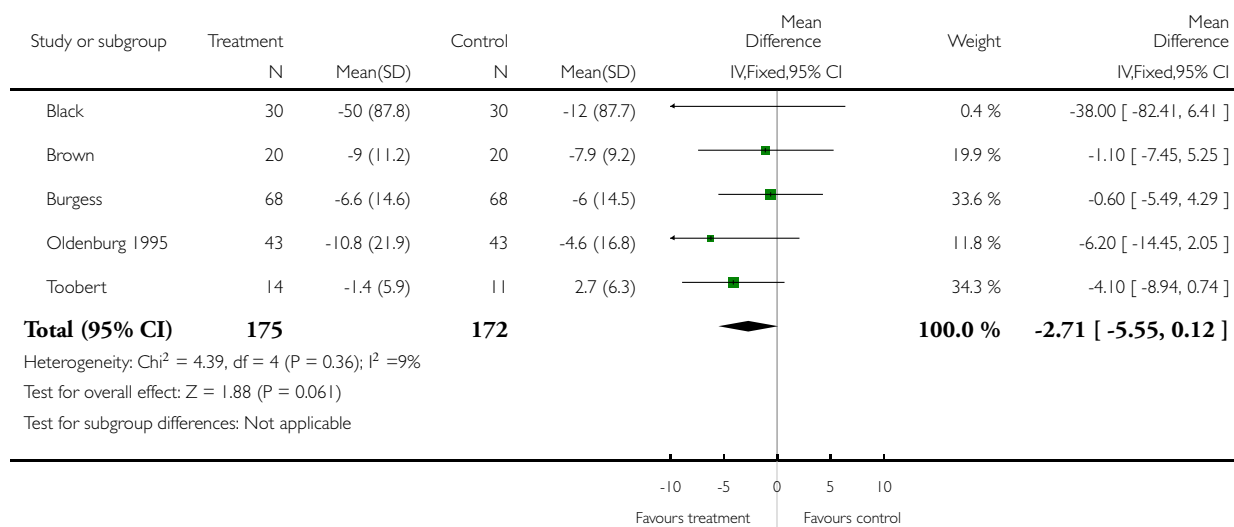


Analysis 2.14. Comparison 2 Any stress management intervention +/- other rehabilitation vs control (usual care/other rehabilitation), Outcome 14 Psychological composite measures.

Review: Psychological interventions for coronary heart disease

Comparison: 2 Any stress management intervention +/- other rehabilitation vs control (usual care/other rehabilitation)

Outcome: 14 Psychological composite measures



ADDITIONAL TABLES

Table 1. Methodological Quality of Included Studies, for all trials

| Study ID | Randomisation | Allocation | Assessors Blind? | Loss to follow up |
|----------|---------------|------------|------------------|---|
| Black | Unclear | Unclear | Unclear | 17% failed to attend in the intervention group. No drop-outs but 20% crossovers from usual care to intervention group. Analysis follows intention to treat principals |
| Brown | Unclear | Unclear | Unclear | 23% dropout in the intervention group, 29% in the control group |

Table 1. Methodological Quality of Included Studies, for all trials (Continued)

| | | | | |
|----------------|---|---|---|---|
| Burell | (Block randomisation) | Unclear | Unclear | No details - unclear. Clinical event data, used intention to treat analyses |
| Burgess | Telephone from central office. Stratified by sex. | Sealed envelope | Unclear | No details - unclear. |
| Cowan | Unclear | Unclear | Unclear - ? state assessors partially blind to group assignment | Report 4% dropout in each group, excluding deaths. No further details |
| Erdman | Unclear | Unclear | Unclear | 20% dropout in each group. |
| Gallacher | Unclear | Sealed envelopes | Unclear | 35% dropout in the intervention group, 28% in the control group |
| Hofmanbang | Unclear | Unclear | Unclear | 4% dropout in the intervention group, 9% in the control group |
| Johnston | (Block randomisation) | Inadequate - alternate allocation as per gender and days of the week to avoid contamination | Unclear | 17% dropout for inpatient intervention, 20% in the control group |
| Jones | Unclear | Unclear | Yes | 5.1% dropout in the intervention group, 5.4% in the control group |
| Lewin | Unclear | Unclear | Yes | 7% dropout in both groups |
| Oldenburg 1985 | (Block randomisation) | Inadequate - each study condition allocated to a particular month | Unclear | Only losses to follow up mentioned are deaths. |
| Oldenburg 1995 | (Block randomisation) | Inadequate - allocated in 2 week blocks based on the date of admission | Unclear | 5.5% loss to follow up overall |
| Ornish | Unclear | Unclear | Yes | 62% dropout in the intervention group, 63% in the control group |

Table 1. Methodological Quality of Included Studies, for all trials (Continued)

| | | | | |
|-----------------------------------|--|---|---|--|
| RCCP | Unclear (randomisation 2:1 to intervention and comparison group) | Unclear | Unclear | 43% dropout in the intervention group, 40% in the comparison group over 4.5 years |
| Stern | (Block randomisation) | Unclear | Unclear | No dropouts reported |
| Toobert | Unclear | Unclear | Unclear | No dropouts reported |
| Van Dixhoorn | Unclear | Unclear | Unclear - but report only clinical outcomes | Only losses to follow up mentioned are deaths. |
| OTHER PSYCHOLOGICAL INTERVENTIONS | | | | |
| Allison | Ranuni function in SAS package to generate random numbers | Unclear - patients phoned post randomisation and asked to participate, allocation concealed until first visit | Unclear - but report complete data only for clinical events | 42% dropout in the intervention group, 37% in the control group. Dropout higher as refusals post randomisation and prior to intervention |
| Debusk | Assignment by computer programme done centrally | Unclear | Unclear | 15% dropout in the intervention group, 12% dropout in the control group |
| Elderem | (Block randomisation) | Unclear | Unclear | 27% dropout from the intervention group, 13% dropout from the control group |
| ENRICHHD | Telephone call to a central coordinating office - automated randomisation system. Assignment stratified by clinical centre | Allocation as per randomisation system | Interventionalists are not blinded, but outcome assessors are | No data yet available |
| Frasure Smith | Unclear | Unclear | Unclear | Up to 46% dropout for the study as a whole. Many patient exclusions and refusals post randomisation before the programmes started. Of those who started, |

Table 1. Methodological Quality of Included Studies, for all trials (Continued)

| | | | | |
|------------------|--|--------------------------------|---------|---|
| | | | | 24% in the intervention group died or were lost to follow up at 4 years, and 28% in the control group |
| Frasure Smith 97 | Telephone from central coordinating office | Sealed opaque envelopes | Yes | 13% dropout in the intervention group, 15% in the control group |
| Fridlund | Unclear | Unclear | Unclear | 40% dropout in the intervention group, 36% in the control group |
| Gutschker | Unclear | Unclear | Unclear | 2% dropout in the intervention group, none in the control group |
| Ibrahim | Block randomisation | Alternate allocation of groups | Unclear | No details reported. Mortality data is the only usable outcome |
| Jolly | (Cluster randomisation) | Unclear | Unclear | 10% dropout in the intervention group, 9% in the control group |
| Lidell | Unclear | Unclear | Unclear | 4% dropout in the intervention group, 17.5% in the control group |
| McHugh | Unclear | Unclear | Unclear | 21% dropout in the intervention group, 17% in the control group |
| Mitsibounas | Unclear | Unclear | Unclear | No dropouts |
| Nordman | (Cluster randomisation) | Sealed envelopes | Unclear | 26% dropout in the intervention group, 29% in the control group |
| PRECOR | Unclear | Unclear | Unclear | No dropouts |
| Rahe | Unclear | Unclear | Unclear | 9% dropout in the intervention group, 9% in the control group |
| Thompson | Unclear | Unclear | Yes | 3% dropout in the intervention group, 7% in the |

Table 1. Methodological Quality of Included Studies, for all trials (Continued)

| | | | | |
|-----------|---------|---------|---------|--|
| | | | | control group |
| Vermeulen | Unclear | Unclear | Unclear | 4% dropout in the intervention group, 10% in the control group |
| | | | | |
| | | | | |
| | | | | |

Table 2. Stress management interventions - Health Related Quality of Life

| Study ID | Patients | Intervention(s) | Outcome measures | Results |
|----------------|--|--|--|---|
| Hofmanbang | PTCA patients. Identified psychopathology prior to randomisation not an inclusion criteria | Complex psychological intervention plus other rehabilitation interventions | Angina QoL questionnaire (reference - Wiklund) | Results are presented for the total score, and separately for somatic symptoms, physical activity, emotional distress and life satisfaction. The authors found no significant differences between the intervention and control groups over different time periods for each of these domains |
| Johnston | Acute MI patients. Identified psychopathology prior to randomisation not an inclusion criteria | Complex psychological intervention plus other rehabilitation interventions | Functional Limitations Profile (FLP) (reference - FPL) | Significant effects of both the inpatient and extended intervention were found on reducing disability measured by the FLP at 2, 6 and 12 months. Separate components of this scale (physical, psychosocial) also showed significant benefits of the interventions |
| Oldenburg 1985 | MI patients. Identified psychopathology prior to randomisation not an inclusion criteria | Complex psychological intervention. | Heart Attack Inventory - comprised 14 previously well established, valid and reliable scales - including scales derived from the Framingham Study, the GHQ, and Spiel- | From Principal Components Analysis, 4 factors were identified as a psychological dysfunction factor, and unhealthy lifestyle factor, a dependence on health- |

Table 2. Stress management interventions - Health Related Quality of Life (Continued)

| | | | | |
|----------------|--|--|---|---|
| | | | berger State Anxiety. Authors used principal components analysis to reduce the number of variables, and therefore results from different scales are not reported separately | care factor and the final factor included alcohol consumption, physical activity and attitudes towards health. On factor 1 there were significant differences between the intervention and control, in favour of the intervention group. There were no significant differences between groups in any of the other factors |
| Oldenburg 1995 | CABG patients. Identified psychopathology prior to randomisation not an inclusion criteria | Complex psychological intervention plus other rehabilitation interventions | General Health Questionnaire (reference - GHQ) | The proportion of patients with a high GHQ score (defined as a score of 4 or more) declined over time, to a similar extent in both the intervention and control groups |
| Erdman | MI patients. Identified psychopathology prior to randomisation not an inclusion criteria | Complex psychological intervention plus other rehabilitation interventions | Psychologic questionnaire developed by the author. | Psychologic scale consisted of 4 domains - well-being, feelings of disability, despondency and social inhibition. No differences were seen between the intervention and control groups at 6 months or 5 years |

Table 3. Stress management interventions - other psychological outcomes

| Study | Patients | Intervention | Outcome measures | Results |
|-----------|---|---|---|--|
| Gallacher | Male angina patients. No identified levels of psychopathology prior to the intervention | Complex psychological intervention. | Derogatic stress profile and subjective stress score. | At 6 months follow up, both the total derogatis score and subjective stress score were significantly lower in the intervention group |
| Toobert | Chronic CHD, all women. No identified levels of psychopathology prior to the intervention | Single psychological intervention plus other rehabilitation interventions | Cohens percieved stress scale (reference - Cohen) | At 12 months follow up the mean percieved stress score was similar in the intervention and control groups |

Table 3. Stress management interventions - other psychological outcomes (Continued)

| | | | | |
|------------|--|---|--|---|
| Hofmanbang | PTCA patients. No identified levels of psychopathology prior to the intervention | Complex psychological intervention plus other rehabilitation interventions | Type A attitudes from the stress profile instrument, Bortner Type A index, and the HALTAM questionnaire which covers different areas of the Type A construct | At 12 months and 2 years Type A attitudes measured with the stress profile instrument were significantly reduced in the intervention group. No differences were seen in any of the other scales measuring Type A behaviour |
| RCCP | MI patients. No identified levels of psychopathology prior to the intervention | Type A behaviour counselling and risk factor counselling vs risk factor counselling | Type A attitudes assessed by video taped clinical interviews (VCI) and questionnaires for patients and spouses | Over 4.5 years there was a reduction in Type A behaviour when assessed by VCI decreased in both groups from baseline, but significantly more in the treatment group. From the participants questionnaire, the decline in Type A behaviour was greatest at the end of the first year, but continued to fall thereafter. The fall was less dramatic in the comparison group |
| | | | | |

WHAT'S NEW

Last assessed as up-to-date: 31 January 2004.

| Date | Event | Description |
|-----------------|---------|---------------------------------|
| 29 October 2008 | Amended | Converted to new review format. |

HISTORY

Protocol first published: Issue 1, 2001

Review first published: Issue 2, 2004

| Date | Event | Description |
|-----------------|--|-----------------------|
| 1 February 2004 | New citation required and conclusions have changed | Substantive amendment |

CONTRIBUTIONS OF AUTHORS

All co-reviewers were involved in the design of the review and in providing critical comments about the manuscript. Karen Rees and Paul Bennett independently selected studies for inclusion and abstracted data from the source papers. Analyses were performed by Karen Rees. Karen Rees and Paul Bennett wrote the first draft of the review. Robert West, George Davey Smith, and Shah Ebrahim were the principal advisors.

DECLARATIONS OF INTEREST

None

SOURCES OF SUPPORT

Internal sources

- Department of Social Medicine, University of Bristol, UK.
- Health Services Research Focus, University of Wales College of Medicine, UK.

External sources

- British Heart Foundation, UK.

NOTES

The Peninsula Technology Assessment Group (PenTAG) at Peninsula Medical School, Exeter, UK and the Cochrane Heart Group have been awarded a 3-year grant from the National Institute for Health Research to update existing Cochrane systematic reviews relevant to public health, primary care and rehabilitation.

This review is scheduled to be updated in the first year of the program. Publication of the updated review is anticipated by issue 2, 2009 at the latest.

INDEX TERMS

Medical Subject Headings (MeSH)

*Psychotherapy; Coronary Disease [mortality; *psychology; rehabilitation]; Stress, Psychological [*therapy]

MeSH check words

Humans